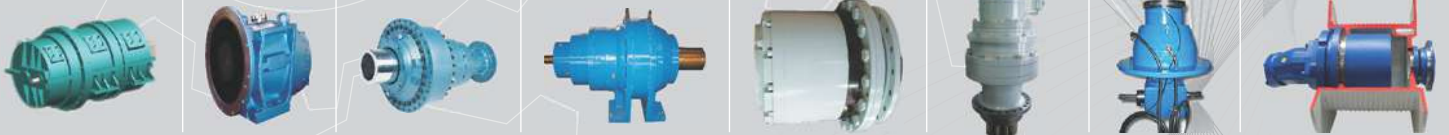


PREMIUM PLANETARY CATALOGUE





General Information

Introduction :

Premium is a fast growing and leading company in designing and manufacturing Planetary Gearboxes and Custom made Gear Boxes that are considered the most important to keep machines on a continuous run. A noted company having three decades of considerable understanding in the fabrication of this rare group of Gears, Premium Planetary Gearbox has carved a niche for itself for maintaining national and international standards in terms of precision, distinction and endurance.

Through the years of experience in the field of industrial drives, the exactness of application and the proper selection of speed reducer gives a long peak performance. Those meet the needs in the core sector applications.

Planetary gearboxes are available in Solid input type, Hollow input type (suitable for standard B5 Flange Electric Motor); mounting will be flange, foot, shaft mounted.

Planetary Design Advantages

1. Coaxial input and output
2. Compact in construction & light in weight
3. Uniform stress distribution
4. Low noise & high efficiency
5. Torque multiplication
6. Direct Mounting of Electric & Hydraulic Motors
7. High shock load capacity
8. Longer life & maintenance free
9. Energy saving design
10. Value for the investment

Material of Construction :

Planets and sun gears:

Planets and sun gears are manufactured from high alloy steel and heat treated for case carburizing to achieve the optimum strength and wear resistance. Gear Profiles are ground to reduce noise level and optimized maximum root strength and minimize sliding contact to ensure high efficiency.

Ring Gears :

Ring gears are manufactured from high alloy steel and heat treated to absorb impact loads and give desired wear life, the production process selected to avoid distortion of gear teeth due to heat treatment.

Shafts :

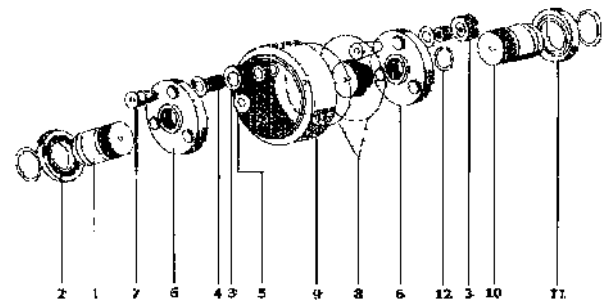
Input and output shafts are manufactured from high alloy steel and toughened for resistant to bending and torsional stress.

Planet Carriers :

Planet carriers are manufactured from high alloy steel forging or castings for strength and rigidity to ensure equal tooth loading on planets.

Housing :

Foot or Flange type casings are of cast iron for strength & rigidity.



- | | | |
|---------------------------------|-------------------|--------------------|
| 1. Input Shaft (Sun gear Shaft) | 5. Planet Washers | 9. Ring Gear |
| 2. Input Bearings | 6. Planet Carrier | 10. Output Shaft |
| 3. Planets | 7. Planet Pin | 11. Output Bearing |
| 4. Planet Rollers | 8. 'O' rings | 12. Circlip |

Selection of Gearbox :

Reducer can be selected by service factor or load classification. Both service factors and load classification are a means of classifying different equipment and applications into a uniform guideline useful for reducer selection. Due to variations in application, service factors are used to adjust equipment ratings to accommodate differing load conditions. Applications involving unusual or severe load condition should be carefully reviewed before a service factor is applied. Care must be taken by the customer to isolate the reducer from unplanned transient load or vibrating conditions.

Before a reducer can be selected for any application, the equivalent output torque or horse power must be computed by multiplying the actual or specified torque or horsepower by the service factor (SF) for the particular load classification for which the unit is to be used. It is necessary that the unit selected has a capacity equal to or in excess of the equivalent output torque or horsepower.

Duration of Service		Load Nature		
		U	M	H
Electric Motors Turbines, Hydraulic Motor	Occasional 12 hrs/day	0.5	0.8	1.25
	Intermittent 3 hrs/day	0.8	1.0	1.5
	3-10 hrs/day	1.0	1.25	1.75
	Above 10 hrs per day	1.25	1.5	2.0

Symbols used :

- f_a = Service factor
- n_1 = Input speed (rpm)
- n_2 = Output speed (rpm)
- n = Gearbox efficiency
- Mt_{con} = Continuous Torque (Nm)
- Mt_{peak} = Peak Torque (Nm)
- Mt_{eq} = Equivalent Torque when gearbox is subjected to varying loads (Nm)



- h** = Number of working hours
- P** = Actual power of gearbox (kW)
- Pt** = Thermal power of gearbox (kW)
- HP** = Horsepower
- Lf** = Load location factor PD
- PD** = Pitch Diameter (mm)
- Fc** = Load connection factor
- To** = Required output Torque (Nm)
- Teq** = Equivalent Torque (Nm)
- P** = Required Mechanical Rating (kW)
- Kf** = Load correction factor on shaft
- N_{1max}** = Maximum input speed (rpm)

Speed:

Input Speed (n₁):

It represents the actual input speed of the gearbox.

Output Speed (n₂):

It represents the actual out speed of the gearbox.

Maximum input Speed (n_{1max}):

It represents the maximum input speed of the gearbox for the continuous operation that the gearbox can run for the specified life index.

Reduction Ratio (i):

It is the ratio of actual speed to actual output speed
 $i = n_1/n_2$

Torque Ratings:

Continuous Torque (Mt_{con})

This is the transmittable torque of the gearbox with continuous operation, that guaranties a duration of h hours with a gearbox output rotation velocity of n₂ RPM. It is expressed as a function of the product n₂ x h

Peak Torque (Mt_{peak}):

This is the maximum torque that the gearbox can transmit for short periods of time.

Equivalent Torque (Mt_{eq}):

It represents the value of the constant torque, which determines the same duration in hours of the torque induced by the work cycle. If T₂₁, T_{2n} are the torque transmitted by the gearbox at the output velocity n₂₁, n_{2n} for the time duration in hours of h₁, h_n, the equivalent torque is:

$$M_{teq} = [((n_{21} * h_1)/(n_2 * h) * T_{21}^{6.61}) + \dots + ((n_{2n} * h_n)/(n_2 * h) * T_{2n}^{6.61})]^{1/6.61}$$

$$T_{eq} = \sqrt[6.61]{\frac{n_{21} * h_1}{n_2 * h} * T_{21}^{6.61} + \dots + \frac{n_{2n} * h_n}{n_2 * h} * T_{2n}^{6.61}}$$

Where,

$$n_2 * h = (n_{21} * h_1) + (n_{22} * h_2) + \dots + (n_{2n} * h_n)$$

Lifetime (n₂x h)

It is the product of output speed and the duration in hours. It represents a number proportional to the stress applied to

the element, which limits the life of the gearbox. To correlate the speed and the duration, the torque is expressed as a function of the product n₂x h. with the speed n₂ and the torque Mt_{con} required the duration in hours can be calculated, or alternatively, if the speed and the duration in hours required are known then the Mt_{con} that the gearbox can transmit can be calculated.

Example :

Expected life in hours	=	2500
Output speed of the gearbox	=	20rpm
2500[h] * 20[n ₂]	=	5 000 00 [n ₂ x h]

Thermal Power (Pt)

Maximum mechanical power transmitted by the gearbox while operating continuously, with splash lubrication, without exceeding the thermal limit of gear box (50°C above the ambient temperature). Greater powers can be transmitted by using an appropriate cooling system. The value refers to continuous operation with input speed of 1440 rpm at ambient temperature 30°C.

Information required for selection of the reduction unit:

- The specific application
- Working life in hours
- Input speed
- Input Horsepower
- Desired output speed
- Over hung load etc.

Selection of reducer is based solely on the required output torque capacity of the application at specified life duration. The Service factor method is used to apply specific industry application standards based on the hours per day of operation.

Calculate the desired reducer ratio:

$$\text{Reducer ratio} = \text{Input speed (RPM)}/\text{Output speed (RPM)}$$

Select Reduction ratio, that is closest to the desired ratio calculated as above.

Calculate the equivalent output torque:

When output torque is known (to)

$$\text{Equivalent Output torque (Teq)} = \text{Output Torque (To) x service factor (fs)}$$

When input motor horse power is known

$$\text{Output torque (Nm)} = \frac{(7123.77 \times \text{HP} \times \text{fs} \times \text{Eff})}{\text{Output speed}}$$

- Where :
- HP = Input Power in horsepower
 - fs = Service Factor from above
 - Eff = Drive Efficiency
- (single = 98%, double = 96%, triple = 94%, four = 92%)

Decide the life index (n₂ x h) of the gearbox

$$\text{Life index (n}_2 \times \text{h)} = \text{output speed} \times \text{life required in hours}$$

Example

Output speed (n ₂)	=	50rpm
Life required (h)	=	20000 hours
Life index (n ₂ x h)	=	50 x 20000 = 1000000



Select Reducer

Locate the reduction ratio determined as above. Locate the smallest model, that offers the output torque (N-m.) rating that is equal to or greater than the equivalent output torque determined as above for the required reduction ratio and for required life index ($n_2 \times h$).

i.e. T_{eq} must be less than or equal to M_{tcon} of the gearbox also peak torque requirement of the application must be less than the M_{tpeak} of the gearbox.

Check thermal capacity (Pt)

The motor horsepower capacity must be compared to the thermal capacity of the reducer and select the rating. Which corresponds to the reducer mode. If the motor horsepower is less then or equal to the rating, your application will not be thermally limited with respect to horsepower. If your motor horsepower exceeds this rating, contact the factory to review the possibility of increasing the thermal capacity by use of a heat exchanger. Thermal ratings can be ignored if continuous running time does not exceed idle time on a per hour basis.

Check over hung load

When over hung load exists on either input or output shafts, check that the overhung load exerted on input and output shaft are lower than or equal to values indicated in the chart for selected reducer model.

In case they are greater than indicated value, change gearbox output version, gearbox size or system bearing arrangement. For correct modification according to your requirement contact factory.

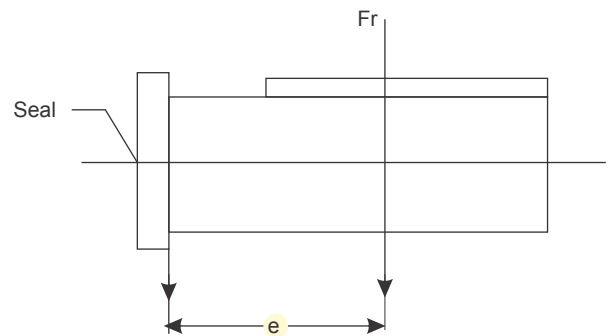
Check the braking torque :

When drives are equipped with brakes on the input and the torque rating of the brake exceeds the rating of the motors, the rating of the brake dictates the selection of the reducer.

Calculations of the overhung load :

The centerline of the overhung load should be as close as possible to the seal cage to minimize bearing load and improve bearing life. The formula for determining overhung load in N. is as follows :

$$\text{Overhung load (N)} = \frac{(14247550.5 \times \text{HP} \times F_c)}{(\text{PD} \times \text{RPM (output)})}$$



Where :

- Hp : Horsepower without service factor.
- PD : Pitch Diameter of sprocket, pinion pulley.
- RPM : Shaft revolutions per minute.
- Fc : Load correction factor.

Load correction factor selection table :

Load correction factor (Fc)

Sprocket or Timing Belt *	1
Machined Pinion or Gear *	1.25
V-Belt	1.5
Flat Belt	2.5

* Refer all multiple chain sprocket and pinion mounted.

If the actual overhung load exceeds the specified capacity, the following may assist to reduce the overhung load on the shaft bearings.

1. Increase the pitch diameter of gear, Pulley or sprocket.
2. Locate the sprocket or belt closer to the Seal Cage.
3. Go to the next larger reducer series.

Check Dimensions :

Dimension drawings for reducers are given in the catalogue for free input and hollow input with foot and flange mounting. For your specific requirement contact the factory.



LOAD CLASSIFICATION BY APPLICATION

U=Uniform load

H=Heavy shock load

M=Moderate shock load

Driven Machine	Load Type	Driven Machine	Load Type	Driven Machine	Load Type	Driven Machine	Load Type
Agitators		Elevators		Merry-go-roundconveyor	M	felt whipper	H
Pure Liquid	U	Bucket-uniform load	U	roll case	H	jordans	M
Liquids & Solids	M	bucket-continuous	U	slab conveyor	H	fog haul	H
Liquid-variable density	M	centrifugal discharge	U	small waste conveyor-belt	U	presses	M
		escalators	U	small waste conveyor-chain	U	pulp machine reel	M
Blowers		freight	M	sorting table	M	suction roll	M
Centrifugal	U	gravity discharge	U	tipple hoise conveyor	M	washers & thickeners	M
Lobe	M			tipple hoise drive	M	winders	M
Vane	U	Fans		transfer conveyor	M		
		Centrifugal	U	transfer roll	M	Printing Presses	
Brewing and distilling		Induced draft	M	tray drive	M	barge haul	H
Bottling Machinery	U	large, mine etc.	M	trimmer feed	M	Pumps centrifugal	U
Brew. kettles cont. duly	U	large, industrial	M	waste conveyor	M	proportioning	M
Cookers cont. duly	U	light, small diameter	U			reciprocation single acting	
Mash tubs cont. duly	U			Machine tools		3 or more cylenders	M
Scale hopper	M	Feeders		bending roll	M	rotary-gear type	U
Can filling M/C	U	apron	M	punch press-gear driver	H	rotary-lobe, vane	U
Cane kniges	M	belt	M	plate planners	H	Rubber and plastic industries	
Car Dumpers	H	disc	U	tapping machine	H	crackers	H
Car pulleys	M	reciprocating	H	Other machine tools		laboratory, equipment	H
Classifiers	M	screw	M	Main drives	M	mixed minds	H
				Anxillary drives	U	refiners	M
Clay working machinery		Food Industry				rubber calenders	M
Bick press	H	beef slicer	M	Metal mlis		rubber mill-2 on line	M
Briquette Machine	H	cereal cooker	U	Draw bench carriage	M	rubber mill-3 on line	M
Clay working machinery	M	dough mixer	M	Main Drive	M	sheeter	M
Pug mill	M	meat grinders	M	slitters	M	tubers and strainers	M
		Generators-not-welding	U			warning mills	M
Compressors		Hammer mills	H	Table conveyors		Sand multer	M
Centrifugal	U			non-reversing group drives	M		
Lobe	M	Hoists		individual drives	H	Sewage disposal equipment	
Reciprocating-Multi-Cyl.	M	heavy duty	H	Reversing wire drawing	M	bar screens	U
Single-Cyl.	H	medium duty	M	flattening machine	M	chemical feeders	U
		skip hoist	M	wire winging machine	M	collectors	U
Conveyor-uniformly loaded		Laundry machines		Mill-rotary type ball	H	de watering screws	M
Apron	U	Laundry washers reverse	M	cement kilns	H	scum breakers	M
Assembly	U	Laundry tumbler	M	dryers and coolers	H	slow or rapid mixers	M
Belt	U			kilns, other than-cement	H	thickeners	M
Bucket	U	Line shafts		pebble	H	vacuum filters	M
Chain	U	processing equipment	M	rod plain	H		
Flight	U	light applications	U	wedge bar	H	Screens	
Oven	U	other line shafts	U	tumbling barrels	H	air washing	U
Screw	U	Lumber industry				rotary-stone or gravel	M
		barkers-Hydraulic	M	Mixers		travelling water intake	U
Conveyor-heavy duty		barkers-mechanical	M	concrete mixers-cont.	M	Slab pushers	M
Apron	M	burner conveyor	M	concrete mixers-int.	M	Steering gear Stokers	U
Assembly	M	chain saw and drag saw	H	constant density	U		
Belt	M	chain transfer	H	Variable density	M	Sugar industry	
Bucket	M	craneway transfer	H	Oil industry		Cane knives	M
Chain	M	de-barking drum	H	chillers	M	crushers	M
Flight	M	edger feeder	M	paraffin filter press	M	mills	M
Live roll	H	gang feedr	M	rotary klins	M		
Oven	M	green chain	M			Textile industry	
Reciprocating	H	live rolls	H	Paper mills		batchers	M
Screw	M	log deck	H	agitators, (Mixers)	M	calenders	M
Shaker	H	log hou-l-incline	H	barker-auxiliaries hydraulic	M	cards	M
Cranes		log hou-l-wll type	H	barker-mechanical	H	dry cans	M
Main hoists	U	log turning device	H	barking drum	H	dryers	M
Bridge travel	H	main log covveyor	H	beater and pulper	M	dyeing machinery	M
Trolley travel	H	off bearing rolls	M	bleacher	U	knitting machines looms	M
		planer feed chains	M	calender	U	mangles	M
Dredges		planer floor chains	M	caenders-super	H	nappers	M
Cable reels	M	planer tilting noise	M			pads	M
Conveyors	M			Converting machine		range drives slashers	M
Cutter Head drives	H	Crusher		except cutters, palters	M	soapers	M
Jig drives	H	ore	H	conveyors	U	spinners	M
Maneuvering Winches	M	stone	H	couch	M	tenter frames	M
Pumps	M	Sugar	H	cutters-plates	H	washers	M
Screen drive	H			cylinders	M	winders	M
Stackers	M			dyers	M		
Utility winches	M			felt stretcher	M		



Rated Torque (in Nm)

MODEL	PR1011	PR1211	PR1511	PR1711	PR2011	PR2511	PR2711	PR3011	PR3511	PR3711	PR4011	PR4511	PR5011	MODEL	PR6011	PR7011	PR8011	PR9011	PR10011	PR12011	PR14011	PR16011
RATIO														RATIO								
3.5	80	220	630	860	1320	2020	3160	4160	6950	9100	11070	17300	25350	3.5	47750	74000	114150	169900	265500	474170	770800	1169350
3.8	70	200	590	790	1210	1880	2950	3850	6410	8350	10250	15960	23410	3.8	43100	68400	105550	157550	245500	438500	712250	1080750
4.3	50	180	530	720	1100	1710	2650	3470	5800	7560	9260	14460	21210	4.3	39000	62000	95200	142800	223000	398150	646500	981000
5.8	30	135	400	520	790	1220	1900	2500	4220	5490	6730	10530	15470	5.8	28600	45400	70100	104650	163000	291250	473250	718250
7.2	20	100	280	370	570	850	1320	1720	2900	3800	4650	7400	11000	7.2	20300	32300	50350	75000	117000	209250	340000	616250
MODEL	PR1021	PR1221	PR1521	PR1721	PR2021	PR2521	PR2721	PR3021	PR3521	PR3721	PR4021	PR4521	PR5021	MODEL	PR6021	PR7021	PR8021	PR9021	PR10021	PR12021	PR14021	PR16021
RATIO						PR2522		PR3022						RATIO								
12.1	80	220	630	860	1320	2020	3160	4160	6950	9100	11070	17300	25350	12.1	47750	74000	114150	169900	265500	474170	770800	1169350
14.8	80	220	630	860	1320	2020	3160	4160	6950	9100	11070	17300	25350	14.8	47750	74000	114150	169900	265500	474170	770800	1169350
16.3	70	200	590	790	1210	1880	2950	3850	6410	8350	10250	15960	23410	16.3	43100	68400	105550	157550	245500	438500	712250	1080750
18.1	50	180	530	720	1100	1710	2650	3470	5800	7560	9260	14460	21210	18.1	39000	62000	95200	142800	223000	398150	646500	981000
20.1	80	220	630	860	1320	2020	3160	4160	6950	9100	11070	17300	25350	20.1	47750	74000	114150	169900	265500	474170	770800	1169350
22.0	70	200	590	790	1210	1880	2950	3850	6410	8350	10250	15960	23410	22.0	43100	68400	105550	157550	245500	438500	712250	1080750
24.6	50	180	530	720	1100	1710	2650	3470	5800	7560	9260	14460	21210	24.6	39000	62000	95200	142800	223000	398150	646500	981000
27.5	70	200	590	790	1210	1880	2950	3850	6410	8350	10250	15960	23410	27.5	43100	68400	105550	157550	245500	438500	712250	1080750
30.7	50	180	530	720	1100	1710	2650	3470	5800	7560	9260	14460	21210	30.7	39000	62000	95200	142800	223000	398150	646500	981000
33.3	30	135	400	520	790	1220	1900	2500	4220	5490	6730	10530	15470	33.3	28600	45400	70100	104650	163000	291250	473250	718250
41.5	30	135	400	520	790	1220	1900	2500	4220	5490	6730	10530	15470	41.5	28600	45400	70100	104650	163000	291250	473250	718250
51.8	20	100	280	370	570	850	1320	1720	2900	3800	4650	7400	11000	51.8	20300	32300	50350	75000	117000	209250	340000	616250
MODEL	PR1031	PR1231	PR1531	PR1731	PR2031	PR2531	PR2731	PR3031	PR3531	PR3731	PR4031	PR4531	PR5031	MODEL	PR6031	PR7031	PR8031	PR9031	PR10031	PR12031	PR14031	PR16031
RATIO			PR1532				PR2732		PR3532			PR4532	PR5032	RATIO								
56.6	80	220	630	860	1320	2020	3160	4160	6950	9100	11070	17300	25350	56.6	47750	74000	114150	169900	265500	474170	770800	1169350
63.2	80	220	630	860	1320	2020	3160	4160	6950	9100	11070	17300	25350	63.2	47750	74000	114150	169900	265500	474170	770800	1169350
69.9	80	220	630	860	1320	2020	3160	4160	6950	9100	11070	17300	25350	69.9	47750	74000	114150	169900	265500	474170	770800	1169350
76.7	80	220	630	860	1320	2020	3160	4160	6950	9100	11070	17300	25350	76.7	47750	74000	114150	169900	265500	474170	770800	1169350
85.5	80	220	630	860	1320	2020	3160	4160	6950	9100	11070	17300	25350	85.5	47750	74000	114150	169900	265500	474170	770800	1169350
93.9	70	200	590	790	1210	1880	2950	3850	6410	8350	10250	15960	23410	93.9	43100	68400	105550	157550	245500	438500	712250	1080750
104.7	50	180	530	720	1100	1710	2650	3470	5800	7560	9260	14460	21210	104.7	39000	62000	95200	142800	223000	398150	646500	981000
115.9	80	220	630	860	1320	2020	3160	4160	6950	9100	11070	17300	25350	115.9	47750	74000	114150	169900	265500	474170	770800	1169350
127.2	70	200	590	790	1210	1880	2950	3850	6410	8350	10250	15960	23410	127.2	43100	68400	105550	157550	245500	438500	712250	1080750
141.8	50	180	530	720	1100	1710	2650	3470	5800	7560	9260	14460	21210	141.8	39000	62000	95200	142800	223000	398150	646500	981000
158.7	70	200	590	790	1210	1880	2950	3850	6410	8350	10250	15960	23410	158.7	43100	68400	105550	157550	245500	438500	712250	1080750
177.0	50	180	530	720	1100	1710	2650	3470	5800	7560	9260	14460	21210	177.0	39000	62000	95200	142800	223000	398150	646500	981000
198.0	70	200	590	790	1210	1880	2950	3850	6410	8350	10250	15960	23410	198.0	43100	68400	105550	157550	245500	438500	712250	1080750
220.8	50	180	530	720	1100	1710	2650	3470	5800	7560	9260	14460	21210	220.8	39000	62000	95200	142800	223000	398150	646500	981000
239.7	30	135	400	520	790	1220	1900	2500	4220	5490	6730	10530	15470	239.7	28600	45400	70100	104650	163000	291250	473250	718250
299.1	30	135	400	520	790	1220	1900	2500	4220	5490	6730	10530	15470	299.1	28600	45400	70100	104650	163000	291250	473250	718250
373.2	20	100	280	370	570	850	1320	1720	2900	3800	4650	7400	11000	373.2	20300	32300	50350	75000	117000	209250	340000	616250

MODEL	PR1041	PR1241	PR1541	PR1741	PR2041	PR2541	PR2741	PR3041	PR3541	PR3741	MODEL	PR4041	PR4541	PR5041	PR6041	PR7041	PR8041	PR9041	PR10041	PR12041	PR14041	PR16041
RATIO									PR3542	PR3742	RATIO											
327	80	220	630	860	1320	2020	3160	4160	6950	9100	327	11070	17300	25350	47750	74000	114150	169900	265500	474170	770800	1169350
333	80	220	630	860	1320	2020	3160	4160	6950	9100	333	11070	17300	25350	47750	74000	114150	169900	265500	474170	770800	1169350
359	70	200	590	790	1210	1880	2950	3850	6410	8350	359	10250	15960	23410	43100	68400	105550	157550	245500	438500	712250	1080750
400	70	200	590	790	1210	1880	2950	3850	6410	8350	400	10250	15960	23410	43100	68400	105550	157550	245500	438500	712250	1080750
408	80	220	630	860	1320	2020	3160	4160	6950	9100	408	11070	17300	25350	47750	74000	114150	169900	265500	474170	770800	1169350
443	80	220	630	860	1320	2020	3160	4160	6950	9100	443	11070	17300	25350	47750	74000	114150	169900	265500	474170	770800	1169350
455	80	220	630	860	1320	2020	3160	4160	6950	9100	455	11070	17300	25350	47750	74000	114150	169900	265500	474170	770800	1169350
494	80	220	630	860	1320	2020	3160	4160	6950	9100	494	11070	17300	25350	47750	74000	114150	169900	265500	474170	770800	1169350
503	80	220	630	860	1320	2020	3160	4160	6950	9100	503	11070	17300	25350	47750	74000	114150	169900	265500	474170	770800	1169350
552	80	220	630	860	1320	2020	3160	4160	6950	9100	552	11070	17300	25350	47750	74000	114150	169900	265500	474170	770800	1169350
604	50	180	530	720	1100	1710	2650	3470	5800	7560	604	9260	14460	21210	39000	62000	95200	142800	223000	398150	646500	981000
669	80	220	630	860	1320	2020	3160	4160	6950	9100	669	11070	17300	25350	47750	74000	114150	169900	265500	474170	770800	1169350
689	80	220	630	860	1320	2020	3160	4160	6950	9100	689	11070	17300	25350	47750	74000	114150	169900	265500	474170	770800	1169350
734	70	200	590	790	1210	1880	2950	3850	6410	8350	734	10250	15960	23410	43100	68400	105550	157550	245500	438500	712250	1080750
75																						



SELECTION CHART

BASED ON 1440 INPUT RPM AND FS=1

FS		63	71	80	90	90	100	112	132	132	160	160	160	180	180	200	225	225	250	250	
HP		0.25	0.5	1	1.5	2	3	5	7.5	10	12.5	15	20	25	30	40	50	60	75	100	
Ratio	O/P Speed																				
3.5	411.43	PR1011	PR1211	PR1511	PR1511	PR1711	PR1711	PR2011	PR2511	PR2711	PR3011	PR3011	PR3011	PR3511	PR3511	PR3711	PR4511	PR4511	PR5011	PR5011	
3.8	378.95	PR1011	PR1211	PR1511	PR1511	PR1711	PR1711	PR2011	PR2511	PR2711	PR3011	PR3011	PR3011	PR3511	PR3511	PR3711	PR4511	PR4511	PR5011	PR5011	
4.26	338.03	PR1011	PR1211	PR1511	PR1511	PR1711	PR1711	PR2011	PR2511	PR2711	PR3011	PR3011	PR3011	PR3511	PR3511	PR3711	PR4511	PR4511	PR5011	PR5011	
5.77	249.57	PR1011	PR1211	PR1511	PR1511	PR1711	PR1711	PR2011	PR2511	PR2711	PR3011	PR3011	PR3011	PR3511	PR3511	PR3711	PR4511	PR4511	PR5011	PR5011	
7.2	200.00	PR1011	PR1211	PR1511	PR1511	PR1711	PR1711	PR2011	PR2511	PR2711	PR3011	PR3011	PR3011	PR3511	PR3511	PR3711	PR4511	PR4511	PR5011	PR5011	
12.1	119.01	PR1021	PR1221	PR1521	PR1521	PR1721	PR1721	PR2021	PR2522	PR2722	PR3021	PR3021	PR3021	PR4521	PR4521	PR4521	PR5022	PR5022	PR5022	PR5022	
14.8	97.30	PR1021	PR1221	PR1521	PR1521	PR1721	PR1721	PR2021	PR2522	PR2722	PR3021	PR3021	PR3021	PR4521	PR4521	PR4521	PR5022	PR5022	PR5022	PR5022	
16.3	88.34	PR1021	PR1221	PR1521	PR1521	PR1721	PR1721	PR2021	PR2522	PR2722	PR3021	PR3021	PR3021	PR4521	PR4521	PR4521	PR5022	PR5022	PR5022	PR5022	
18.1	79.56	PR1021	PR1221	PR1521	PR1521	PR1721	PR1721	PR2021	PR2522	PR2722	PR3021	PR3021	PR3021	PR4521	PR4521	PR4521	PR5022	PR5022	PR5022	PR5022	
20.1	71.64	PR1021	PR1221	PR1521	PR1521	PR1721	PR1721	PR2021	PR2522	PR2722	PR3021	PR3021	PR3021	PR4521	PR4521	PR4521	PR5022	PR5022	PR5022	PR5022	
22	65.45	PR1021	PR1221	PR1521	PR1521	PR1721	PR1721	PR2021	PR2522	PR2722	PR3021	PR3021	PR3021	PR4521	PR4521	PR4521	PR5022	PR5022	PR5022	PR5022	
24.6	58.54	PR1021	PR1221	PR1521	PR1521	PR1721	PR1721	PR2021	PR2522	PR2722	PR3021	PR3021	PR3021	PR4521	PR4521	PR4521	PR5022	PR5022	PR5022	PR5022	
27.5	52.36	PR1021	PR1221	PR1521	PR1521	PR1721	PR1721	PR2021	PR2522	PR2722	PR3021	PR3021	PR3021	PR4521	PR4521	PR4521	PR5022	PR5022	PR5022	PR5022	
30.7	46.91	PR1021	PR1221	PR1521	PR1521	PR1721	PR1721	PR2021	PR2522	PR2722	PR3021	PR3021	PR3021	PR4521	PR4521	PR4521	PR5022	PR5022	PR5022	PR5022	
33.3	43.24	PR1221	PR1221	PR1521	PR1521	PR1721	PR1721	PR2522	PR2522	PR2722	PR3021	PR3521	PR3521	PR4521	PR4521	PR5021	PR5022	PR5022	PR5022	PR6021	
41.5	34.70	PR1221	PR1221	PR1521	PR1521	PR1721	PR2021	PR2522	PR2522	PR3021	PR3521	PR3521	PR3721	PR4521	PR4521	PR5021	PR5022	PR5022	PR6021	PR6021	
51.8	27.80	PR1221	PR1521	PR1521	PR2021	PR2021	PR2521	PR2721	PR3521	PR3021	PR3721	PR3721	PR4521	PR4521	PR5022	PR5022	PR6021	PR6021	PR6021	PR7021	
56.6	25.44	PR1031	PR1231	PR1531	PR1531	PR2731	PR2731	PR3031	PR3531	PR3731	PR4031	PR4031	PR4031	PR5032	PR5032	PR5032	PR7031	PR7031	PR7031	PR7031	
63.2	22.78	PR1031	PR1231	PR1531	PR1531	PR2731	PR2731	PR3031	PR3531	PR3731	PR4031	PR4031	PR4031	PR5032	PR5032	PR5032	PR7031	PR7031	PR7031	PR7031	
69.9	20.60	PR1231	PR1231	PR1531	PR1531	PR2731	PR2731	PR3031	PR3531	PR3731	PR4031	PR4031	PR4031	PR5032	PR5032	PR5032	PR7031	PR7031	PR7031	PR7031	
76.7	18.77	PR1231	PR1231	PR1531	PR1531	PR2731	PR2731	PR3031	PR3531	PR3731	PR4031	PR4031	PR4031	PR5032	PR5032	PR5032	PR7031	PR7031	PR7031	PR7031	
85.5	16.84	PR1231	PR1231	PR1531	PR1731	PR2731	PR2731	PR3031	PR3531	PR3731	PR4031	PR4031	PR4031	PR5032	PR5032	PR5032	PR7031	PR7031	PR7031	PR7031	
93.9	15.34	PR1231	PR1531	PR1531	PR1731	PR2731	PR2731	PR3031	PR3531	PR3731	PR4031	PR4031	PR4031	PR5032	PR5032	PR5032	PR7031	PR7031	PR7031	PR7031	
104.7	13.75	PR1231	PR1531	PR1531	PR2031	PR2731	PR2731	PR3031	PR3531	PR3731	PR4031	PR4031	PR4532	PR5032	PR5032	PR6031	PR7031	PR7031	PR7031	PR7031	
115.9	12.42	PR1231	PR1531	PR1531	PR2031	PR2731	PR2731	PR3031	PR3531	PR3731	PR4031	PR4532	PR4532	PR5032	PR5032	PR6031	PR7031	PR7031	PR7031	PR7031	
127.2	11.32	PR1231	PR1531	PR1731	PR2031	PR2731	PR2731	PR3031	PR3531	PR3731	PR4031	PR4532	PR4532	PR5032	PR5032	PR6031	PR7031	PR7031	PR7031	PR7031	
141.8	10.16	PR1231	PR1531	PR1731	PR2031	PR2731	PR2731	PR3031	PR3531	PR3731	PR4031	PR4532	PR4532	PR5032	PR6031	PR6031	PR7031	PR7031	PR7031	PR8031	
158.7	9.07	PR1231	PR1531	PR1731	PR2031	PR2731	PR2731	PR3031	PR3531	PR3731	PR4031	PR4532	PR4532	PR5032	PR6031	PR6031	PR7031	PR7031	PR7031	PR8031	
177	8.14	PR1231	PR1531	PR2031	PR2531	PR2731	PR3031	PR3531	PR3731	PR4031	PR4532	PR4532	PR5031	PR6031	PR6031	PR6031	PR7031	PR7031	PR8031	PR8031	
198	7.27	PR1231	PR1531	PR2031	PR2731	PR3031	PR3531	PR3531	PR4531	PR4532	PR4532	PR4532	PR6031	PR6031	PR6031	PR6031	PR7031	PR7031	PR8031	PR8031	
220.8	6.52	PR1231	PR1731	PR2031	PR2731	PR3031	PR3531	PR3531	PR4531	PR4532	PR4532	PR5031	PR6031	PR6031	PR6031	PR7031	PR7031	PR8031	PR8031	PR9031	
239.7	6.01	PR1231	PR2031	PR2531	PR2731	PR3031	PR3531	PR4031	PR4531	PR5031	PR5031	PR6031	PR6031	PR7031	PR7031	PR8031	PR8031	PR9031	PR9031	PR10031	
299.1	4.81	PR1531	PR2031	PR2731	PR3031	PR3531	PR3731	PR4531	PR5031	PR6031	PR6031	PR6031	PR7031	PR7031	PR8031	PR8031	PR9031	PR9031	PR10031	PR10031	
327	4.40	PR1541	PR1741	PR2541	PR2741	PR3542	PR3542	PR4041	PR5042	PR5042	PR5042	PR5042	PR6041	PR6041	PR7041	PR7041	PR8041	PR8041	PR9041	PR9041	
359	4.01	PR1541	PR2041	PR2541	PR2741	PR3542	PR3542	PR4041	PR5042	PR5042	PR5042	PR6041	PR6041	PR7041	PR7041	PR8041	PR8041	PR9041	PR9041	PR10041	
400	3.60	PR1541	PR2041	PR2741	PR3041	PR3542	PR3542	PR4041	PR5042	PR5042	PR6041	PR6041	PR6041	PR7041	PR7041	PR8041	PR8041	PR9041	PR9041	PR10041	
443	3.25	PR1541	PR2041	PR2741	PR3041	PR3542	PR3542	PR4041	PR5042	PR5042	PR6041	PR6041	PR6041	PR7041	PR7041	PR8041	PR8041	PR9041	PR9041	PR10041	
455	3.16	PR1541	PR2041	PR2741	PR3041	PR3542	PR3742	PR4542	PR5042	PR5042	PR6041	PR6041	PR6041	PR7041	PR7041	PR8041	PR8041	PR9041	PR10041	PR10041	
494	2.91	PR1541	PR2041	PR2741	PR3041	PR3542	PR3742	PR4542	PR5042	PR5042	PR6041	PR6041	PR7041	PR7041	PR8041	PR8041	PR9041	PR9041	PR10041	PR10041	
503	2.86	PR1541	PR2041	PR2741	PR3041	PR3542	PR3742	PR4542	PR5042	PR5042	PR6041	PR6041	PR7041	PR7041	PR8041	PR8041	PR9041	PR9041	PR10041	PR10041	
552	2.61	PR1741	PR2541	PR2741	PR3041	PR3542	PR3742	PR4542	PR5042	PR6041	PR6041	PR6041	PR7041	PR7041	PR8041	PR8041	PR9041	PR9041	PR10041	PR12041	
604	2.38	PR2041	PR2541	PR3041	PR3541	PR3742	PR4041	PR5041	PR6041	PR6041	PR6041	PR7041	PR7041	PR8041	PR8041	PR9041	PR10041	PR10041	PR12041	PR12041	
689	2.09	PR1741	PR2541	PR3041	PR3541	PR3742	PR4041	PR4542	PR6041	PR6041	PR6041	PR7041	PR7041	PR8041	PR8041	PR9041	PR10041	PR10041	PR10041	PR12041	
734	1.96	PR2041	PR2541	PR3541	PR3541	PR3742	PR4541	PR5041	PR6041	PR6041	PR7041	PR7041	PR8041	PR8041	PR9041	PR9041	PR10041	PR10041	PR12041	PR12041	
754	1.91	PR2041	PR2741	PR3541	PR3541	PR3742	PR4541	PR5041	PR6041	PR6041	PR7041	PR7041	PR8041	PR8041	PR9041	PR10041	PR10041	PR12041	PR12041	PR12041	
769	1.87	PR2041	PR2541	PR3041	PR3541	PR3742	PR4541	PR5041	PR6041	PR6041	PR7041	PR7041	PR8041	PR8041	PR9041	PR10041	PR10041	PR12041	PR12041	PR12041	
818	1.76	PR2041	PR2741	PR3541	PR3741	PR4041	PR4541	PR5041	PR6041	PR7041	PR7041	PR7041	PR8041	PR8041	PR9041	PR10041	PR10041	PR12041	PR12041	PR14041	
844	1.71	PR2041	PR2741	PR3541	PR3541	PR3742	PR4541	PR5041	PR6041	PR6041	PR7041	PR7041	PR8041	PR8041	PR9041	PR10041	PR10041	PR12041	PR12041	PR12041	
916	1.57	PR2041	PR3041	PR3541	PR3741	PR4041	PR4541	PR5041	PR6041	PR7041	PR7041	PR7041	PR8041	PR9041	PR9041	PR10041	PR10041	PR12041	PR12041	PR14041	
1021	1.41	PR2541	PR3041	PR3541	PR3741	PR4541	PR5041	PR6041	PR6041	PR7041	PR8041	PR8041	PR9041	PR9041	PR10041	PR10041	PR12041	PR12041	PR12041	PR14041	
1041	1.38	PR2041	PR3041	PR3541	PR4041	PR4541	PR4542	PR6041	PR6041	PR7041	PR7041	PR8041	PR8041	PR9041	PR9041	PR10041	PR10041	PR12041	PR12041	PR14041	
1108	1.30	PR2741	PR3541	PR3741	PR4541	PR5041	PR6041	PR6041	PR7041	PR8041	PR8041	PR9041	PR10041	PR10041	PR12041	PR12041	PR12041	PR14041	PR14041	PR16041	
1274	1.13	PR2541	PR3041	PR3741	PR4541	PR4542	PR5041	PR6041	PR7041	PR8041	PR8041	PR8041	PR9041	PR10041	PR10041	PR12041	PR12041	PR12041	PR14041	PR14041	
1383	1.04	PR2741	PR3541	PR4041	PR4541	PR5041	PR6041	PR7041	PR8041	PR8041	PR9041	PR9041	PR10041	PR12041	PR12041	PR12041	PR14041	PR14041	PR16041	PR16041	
1590	0.91	PR3041	PR3541	PR4041	PR4541	PR5041	PR6041</														



SELECTION CHART

BASED ON 1440 INPUT RPM AND FS=1.5

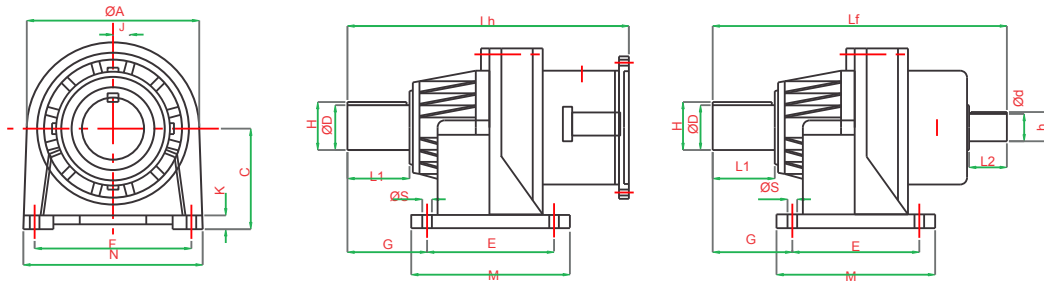
FS		63	71	80	90	90	100	112	132	132	160	160	160	180	180	200	225	225	250	250	
HP		0.25	0.5	1	1.5	2	3	5	7.5	10	12.5	15	20	25	30	40	50	60	75	100	
Ratio	O/P Speed																				
3.5	411.43	PR1011	PR1211	PR1511	PR1511	PR1711	PR1711	PR2011	PR2511	PR2711	PR3011	PR3011	PR3011	PR3511	PR3511	PR3711	PR4511	PR4511	PR5011	PR5011	
3.8	378.95	PR1011	PR1211	PR1511	PR1511	PR1711	PR1711	PR2011	PR2511	PR2711	PR3011	PR3011	PR3011	PR3511	PR3511	PR3711	PR4511	PR4511	PR5011	PR5011	
4.26	338.03	PR1011	PR1211	PR1511	PR1511	PR1711	PR1711	PR2011	PR2511	PR2711	PR3011	PR3011	PR3011	PR3511	PR3511	PR3711	PR4511	PR4511	PR5011	PR5011	
5.77	249.57	PR1011	PR1211	PR1511	PR1511	PR1711	PR1711	PR2011	PR2511	PR2711	PR3011	PR3011	PR3011	PR3511	PR3511	PR3711	PR4511	PR4511	PR5011	PR5011	
7.2	200.00	PR1011	PR1211	PR1511	PR1511	PR1711	PR1711	PR2011	PR2511	PR2711	PR3011	PR3011	PR3011	PR3511	PR3511	PR3711	PR4511	PR4511	PR5011	PR5011	
12.1	119.01	PR1021	PR1221	PR1521	PR1521	PR1721	PR1721	PR2021	PR2522	PR2722	PR3021	PR3021	PR3021	PR4021	PR4021	PR4521	PR5021	PR5021	PR5022	PR5022	
14.8	97.30	PR1021	PR1221	PR1521	PR1521	PR1721	PR1721	PR2021	PR2522	PR2722	PR3021	PR3021	PR3021	PR4021	PR4021	PR4521	PR5021	PR5021	PR5022	PR5022	
16.3	88.34	PR1021	PR1221	PR1521	PR1521	PR1721	PR1721	PR2021	PR2522	PR2722	PR3021	PR3021	PR3021	PR4021	PR4021	PR4521	PR5021	PR5021	PR5022	PR5022	
18.1	79.56	PR1021	PR1221	PR1521	PR1521	PR1721	PR1721	PR2021	PR2522	PR2722	PR3021	PR3021	PR3021	PR4021	PR4021	PR4521	PR5021	PR5021	PR5022	PR5022	
20.1	71.64	PR1021	PR1221	PR1521	PR1521	PR1721	PR1721	PR2021	PR2522	PR2722	PR3021	PR3021	PR3021	PR4021	PR4021	PR4521	PR5021	PR5021	PR5022	PR5022	
22	65.45	PR1021	PR1221	PR1521	PR1521	PR1721	PR1721	PR2021	PR2522	PR2722	PR3021	PR3021	PR3021	PR4021	PR4021	PR4521	PR5021	PR5021	PR5022	PR5022	
24.6	58.54	PR1021	PR1221	PR1521	PR1521	PR1721	PR1721	PR2021	PR2522	PR2722	PR3021	PR3021	PR3721	PR4021	PR4021	PR4521	PR5021	PR5021	PR5022	PR5022	
27.5	52.36	PR1021	PR1221	PR1521	PR1521	PR1721	PR1721	PR2021	PR2522	PR2722	PR3021	PR3021	PR3721	PR4021	PR4521	PR4521	PR5021	PR5021	PR5022	PR5022	
30.7	46.91	PR1221	PR1221	PR1521	PR1521	PR1721	PR1721	PR2522	PR2722	PR2722	PR3021	PR3721	PR3721	PR4021	PR4521	PR4521	PR5021	PR5021	PR5022	PR6021	
33.3	43.24	PR1221	PR1221	PR1521	PR1521	PR1721	PR2021	PR2721	PR2722	PR3021	PR3721	PR3721	PR3721	PR4021	PR4521	PR4521	PR5021	PR6021	PR6021	PR5022	
41.5	34.70	PR1221	PR1521	PR1521	PR1721	PR2021	PR2521	PR2721	PR3021	PR3521	PR3721	PR3721	PR4021	PR4521	PR5021	PR5021	PR6021	PR6021	PR6021	PR6021	
51.8	27.80	PR1521	PR1521	PR2021	PR2021	PR2521	PR2521	PR3521	PR3521	PR3721	PR4021	PR4521	PR5021	PR5021	PR6021	PR6021	PR7021	PR7021	PR7021	PR8021	
56.6	25.44	PR1231	PR1231	PR1531	PR1731	PR2731	PR2731	PR3031	PR3532	PR3731	PR4031	PR4031	PR4031	PR5032	PR5032	PR6031	PR7031	PR7031	PR7031	PR7031	
63.2	22.78	PR1231	PR1531	PR1531	PR1731	PR2731	PR2731	PR3031	PR3532	PR3731	PR4031	PR4031	PR4031	PR5032	PR5032	PR6031	PR7031	PR7031	PR7031	PR7031	
69.9	20.60	PR1231	PR1531	PR1531	PR1731	PR2731	PR2731	PR3031	PR3532	PR3731	PR4031	PR4031	PR4031	PR5032	PR5032	PR6031	PR7031	PR7031	PR7031	PR7031	
76.7	18.77	PR1231	PR1531	PR1531	PR1731	PR2731	PR2731	PR3031	PR3532	PR3731	PR4031	PR4031	PR4532	PR5032	PR5032	PR6031	PR7031	PR7031	PR7031	PR7031	
85.5	16.84	PR1231	PR1531	PR1731	PR2031	PR2731	PR2731	PR3031	PR3532	PR3731	PR4031	PR4031	PR4532	PR5032	PR5032	PR6031	PR7031	PR7031	PR7031	PR7031	
93.9	15.34	PR1231	PR1531	PR1731	PR2031	PR2731	PR2731	PR3031	PR3532	PR3731	PR4031	PR4532	PR4532	PR5032	PR5032	PR6031	PR7031	PR7031	PR7031	PR8031	
95.7	15.05	PR1231	PR1531	PR1731	PR2031	PR2731	PR2731	PR3031	PR3532	PR3731	PR4031	PR4031	PR4532	PR5032	PR5032	PR6031	PR7031	PR7031	PR7031	PR7031	
104.7	13.75	PR1531	PR1531	PR2031	PR2531	PR2731	PR2731	PR3532	PR3532	PR4031	PR4532	PR4532	PR5031	PR5032	PR6031	PR6031	PR7031	PR7031	PR7031	PR8031	
106.7	13.50	PR1231	PR1531	PR1731	PR2031	PR2731	PR2731	PR3532	PR3731	PR3731	PR4031	PR4532	PR4532	PR5032	PR5032	PR6031	PR7031	PR7031	PR7031	PR8031	
115.9	12.42	PR1231	PR1531	PR2031	PR2031	PR2731	PR3031	PR3531	PR3731	PR4031	PR4532	PR4532	PR5031	PR5032	PR6031	PR6031	PR7031	PR7031	PR7031	PR8031	
117.16	12.29	PR1531	PR1531	PR2031	PR2531	PR2731	PR2731	PR3531	PR3731	PR4031	PR4031	PR4532	PR4532	PR5031	PR6031	PR6031	PR7031	PR7031	PR7031	PR8031	
127.2	11.32	PR1531	PR1531	PR2031	PR2531	PR2731	PR3031	PR3531	PR3731	PR4031	PR4532	PR4532	PR5031	PR6031	PR6031	PR6031	PR7031	PR7031	PR8031	PR8031	
130.66	11.02	PR1531	PR1531	PR2031	PR2531	PR2731	PR2731	PR3531	PR3731	PR4031	PR4532	PR4532	PR5031	PR6031	PR6031	PR6031	PR7031	PR7031	PR8031	PR8031	
141.8	10.16	PR1531	PR1531	PR2031	PR2531	PR2731	PR3031	PR3531	PR4031	PR4532	PR4532	PR5031	PR6031	PR6031	PR6031	PR7031	PR7031	PR8031	PR8031	PR9031	
144.57	9.96	PR1531	PR1531	PR2031	PR2531	PR3031	PR3531	PR3531	PR4031	PR4532	PR4532	PR4532	PR5031	PR6031	PR6031	PR6031	PR7031	PR7031	PR8031	PR8031	
158.7	9.07	PR1531	PR1731	PR2031	PR2531	PR3031	PR3531	PR3531	PR4031	PR4532	PR4532	PR5031	PR6031	PR6031	PR6031	PR7031	PR7031	PR8031	PR8031	PR9031	
177	8.14	PR1531	PR1731	PR2531	PR2731	PR3031	PR3532	PR3731	PR4531	PR4532	PR5031	PR5031	PR6031	PR6031	PR7031	PR7031	PR8031	PR8031	PR9031	PR9031	
192.1	7.50	PR1531	PR2031	PR2731	PR3031	PR3531	PR3532	PR4532	PR5031	PR5031	PR6031	PR6031	PR6031	PR7031	PR7031	PR8031	PR9031	PR9031	PR10031	PR10031	
198	7.27	PR1531	PR1731	PR3031	PR3531	PR3531	PR3531	PR4031	PR4531	PR4532	PR5031	PR5031	PR6031	PR6031	PR7031	PR7031	PR8031	PR8031	PR9031	PR9031	
220.8	6.52	PR1531	PR2031	PR3031	PR3531	PR3531	PR3531	PR4532	PR4531	PR5031	PR5031	PR6031	PR6031	PR7031	PR7031	PR8031	PR8031	PR9031	PR9031	PR10031	
239.7	6.01	PR1731	PR2531	PR3031	PR3531	PR3532	PR3731	PR4531	PR5031	PR6031	PR6031	PR6031	PR6031	PR7031	PR7031	PR8031	PR9031	PR9031	PR10031	PR12031	
299.1	4.81	PR2031	PR2531	PR3031	PR3531	PR3731	PR4031	PR5031	PR6031	PR6031	PR6031	PR7031	PR7031	PR8031	PR8031	PR9031	PR9031	PR10031	PR14031	PR12031	
327	4.40	PR1541	PR2041	PR2741	PR3041	PR3542	PR3742	PR4542	PR5042	PR5042	PR6041	PR6041	PR7041	PR7041	PR8041	PR8041	PR9041	PR9041	PR10041	PR10041	
359	4.01	PR1741	PR2041	PR2741	PR3541	PR3542	PR3742	PR4542	PR5042	PR6041	PR6041	PR6041	PR7041	PR7041	PR8041	PR8041	PR9041	PR9041	PR10041	PR12041	
400	3.60	PR1741	PR2541	PR3041	PR3541	PR3542	PR4041	PR4542	PR5042	PR6041	PR6041	PR7041	PR7041	PR8041	PR8041	PR9041	PR9041	PR10041	PR10041	PR12041	
443	3.25	PR1741	PR2541	PR3041	PR3541	PR3742	PR4041	PR4542	PR5042	PR6041	PR6041	PR7041	PR7041	PR8041	PR8041	PR9041	PR9041	PR10041	PR10041	PR12041	
455	3.16	PR1741	PR2541	PR3041	PR3541	PR3742	PR4041	PR4542	PR6041	PR6041	PR6041	PR7041	PR7041	PR8041	PR8041	PR9041	PR9041	PR10041	PR10041	PR12041	
494	2.91	PR2041	PR2541	PR3041	PR3541	PR3742	PR4041	PR5042	PR6041	PR6041	PR6041	PR7041	PR7041	PR8041	PR9041	PR9041	PR10041	PR10041	PR12041	PR12041	
503	2.86	PR2041	PR2541	PR3041	PR3541	PR3742	PR4041	PR5042	PR6041	PR6041	PR6041	PR7041	PR8041	PR8041	PR9041	PR9041	PR10041	PR10041	PR12041	PR12041	
552	2.61	PR2041	PR2541	PR3041	PR3541	PR3742	PR4541	PR5042	PR6041	PR6041	PR7041	PR7041	PR8041	PR8041	PR9041	PR9041	PR10041	PR10041	PR12041	PR12041	
604	2.38	PR2541	PR2741	PR3541	PR3741	PR4041	PR4541	PR6041	PR6041	PR7041	PR7041	PR8041	PR8041	PR9041	PR9041	PR10041	PR10041	PR12041	PR12041	PR14041	
689	2.09	PR2041	PR2741	PR3541	PR3741	PR4041	PR4542	PR6041	PR6041	PR7041	PR7041	PR8041	PR8041	PR9041	PR9041	PR10041	PR10041	PR12041	PR12041	PR14041	
734	1.96	PR2541	PR3041	PR3541	PR3741	PR4541	PR5041	PR6041	PR6041	PR7041	PR7041	PR8041	PR9041	PR9041	PR10041	PR10041	PR12041	PR12041	PR12041	PR14041	
754	1.91	PR2541	PR3041	PR3541	PR4041	PR4541	PR5041	PR6041	PR7041	PR7041	PR8041	PR8041	PR9041	PR9041	PR10041	PR12041	PR12041	PR12041	PR14041	PR14041	
769	1.87	PR2541	PR3041	PR3541	PR4541	PR4541	PR5041	PR6041	PR6041	PR7041	PR7041	PR8041	PR8041	PR9041	PR9041	PR10041	PR10041	PR12041	PR12041	PR14041	
818	1.76	PR2541	PR3041	PR4041	PR4541	PR4541	PR5042	PR6041	PR7041	PR7041	PR8041	PR8041	PR9041	PR10041	PR10041	PR12041	PR12041	PR12041	PR14041	PR14041	
844	1.71	PR2541	PR3041	PR3541	PR4041	PR4541	PR5041	PR6041	PR7041	PR7041	PR8041	PR8041	PR9041	PR9041	PR10041	PR12041	PR12041	PR12041	PR14041	PR14041	
916	1.57	PR2541	PR3541	PR3741	PR4041	PR4542	PR5042														



SELECTION CHART

BASED ON 1440 INPUT RPM AND FS=2

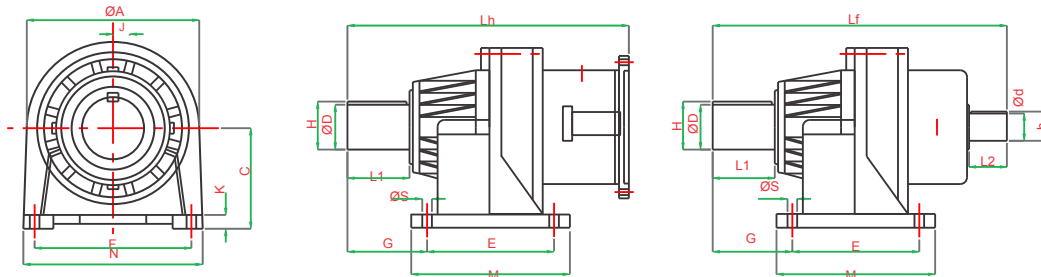
FS		63	71	80	90	90	100	112	132	132	160	160	160	180	180	200	225	225	250	250
HP		0.25	0.5	1	1.5	2	3	5	7.5	10	12.5	15	20	25	30	40	50	60	75	100
Ratio	O/P Speed																			
3.5		PR1011	PR1211	PR1511	PR1511	PR1711	PR1711	PR2011	PR2511	PR2711	PR3011	PR3011	PR3011	PR3511	PR3511	PR3711	PR4511	PR4511	PR5011	PR5011
3.8	378.95	PR1011	PR1211	PR1511	PR1511	PR1711	PR1711	PR2011	PR2511	PR2711	PR3011	PR3011	PR3011	PR3511	PR3511	PR3711	PR4511	PR4511	PR5011	PR5011
4.26	338.03	PR1011	PR1211	PR1511	PR1511	PR1711	PR1711	PR2011	PR2511	PR2711	PR3011	PR3011	PR3011	PR3511	PR3511	PR3711	PR4511	PR4511	PR5011	PR5011
5.77	249.57	PR1011	PR1211	PR1511	PR1511	PR1711	PR1711	PR2011	PR2511	PR2711	PR3011	PR3011	PR3011	PR3511	PR3511	PR3711	PR4511	PR4511	PR5011	PR5011
7.2	200.00	PR1211	PR1211	PR1511	PR1511	PR1711	PR1711	PR2011	PR2511	PR2711	PR3011	PR3011	PR3011	PR3511	PR3511	PR3711	PR4511	PR4511	PR5011	PR5011
12.1	119.01	PR1021	PR1221	PR1521	PR1521	PR1721	PR1721	PR2021	PR2522	PR2722	PR3021	PR3021	PR3021	PR4521	PR4521	PR4521	PR5022	PR5022	PR5022	PR5022
14.8	97.30	PR1021	PR1221	PR1521	PR1521	PR1721	PR1721	PR2021	PR2522	PR2722	PR3021	PR3021	PR3021	PR4521	PR4521	PR4521	PR5022	PR5022	PR5022	PR5022
16.3	88.34	PR1021	PR1221	PR1521	PR1521	PR1721	PR1721	PR2021	PR2522	PR2722	PR3021	PR3021	PR3021	PR4521	PR4521	PR4521	PR5022	PR5022	PR5022	PR5022
18.1	79.56	PR1021	PR1221	PR1521	PR1521	PR1721	PR1721	PR2021	PR2522	PR2722	PR3021	PR3021	PR3021	PR4521	PR4521	PR4521	PR5022	PR5022	PR5022	PR5022
20.1	71.64	PR1021	PR1221	PR1521	PR1521	PR1721	PR1721	PR2021	PR2522	PR2722	PR3021	PR3021	PR3721	PR4521	PR4521	PR4521	PR5022	PR5022	PR5022	PR5022
22	65.45	PR1021	PR1221	PR1521	PR1521	PR1721	PR1721	PR2021	PR2522	PR2722	PR3021	PR3021	PR3721	PR4521	PR4521	PR4521	PR5022	PR5022	PR5022	PR6021
24.6	58.54	PR1221	PR1221	PR1521	PR1521	PR1721	PR2021	PR2522	PR2722	PR2722	PR3021	PR3721	PR3721	PR4521	PR4521	PR4521	PR5022	PR5022	PR5022	PR6021
27.5	52.36	PR1221	PR1221	PR1521	PR1521	PR1721	PR2021	PR2522	PR2722	PR2722	PR3021	PR3721	PR3721	PR4521	PR4521	PR4521	PR5022	PR5022	PR5022	PR6021
30.7	46.91	PR1221	PR1221	PR1521	PR1521	PR1721	PR2021	PR2522	PR2722	PR3021	PR3721	PR3721	PR3721	PR4521	PR4521	PR4521	PR5022	PR5022	PR6021	PR6021
33.3	43.24	PR1221	PR1521	PR1521	PR1721	PR2021	PR2521	PR2721	PR3021	PR3521	PR3721	PR3721	PR4021	PR4521	PR4521	PR5021	PR6021	PR6021	PR6021	PR6021
41.5	34.70	PR1221	PR1521	PR1721	PR2021	PR2521	PR2521	PR3021	PR3521	PR3721	PR4521	PR4521	PR5021	PR5021	PR6021	PR6021	PR6021	PR6021	PR6021	PR6021
51.8	27.80	PR1521	PR1521	PR2021	PR2521	PR2721	PR3021	PR3521	PR3721	PR4521	PR4521	PR5021	PR5021	PR6021	PR6021	PR7021	PR7021	PR7021	PR7021	PR9021
56.6	25.44	PR1231	PR1531	PR1531	PR1731	PR2731	PR2731	PR3031	PR3532	PR3731	PR4031	PR4031	PR4532	PR5032	PR5032	PR6031	PR7031	PR7031	PR7031	PR7031
63.2	22.78	PR1231	PR1531	PR1531	PR2031	PR2731	PR2731	PR3031	PR3532	PR3731	PR4031	PR4031	PR4532	PR5032	PR5032	PR6031	PR7031	PR7031	PR7031	PR7031
69.9	20.60	PR1231	PR1531	PR1731	PR2031	PR2731	PR2731	PR3031	PR3532	PR3731	PR4031	PR4031	PR4532	PR5032	PR5032	PR6031	PR7031	PR7031	PR7031	PR7031
76.7	18.77	PR1231	PR1531	PR1731	PR2031	PR2731	PR2731	PR3031	PR3532	PR3731	PR4031	PR4031	PR4532	PR5032	PR5032	PR6031	PR7031	PR7031	PR7031	PR8031
85.5	16.84	PR1231	PR1531	PR1731	PR2031	PR2731	PR3031	PR3531	PR3731	PR3731	PR4031	PR4031	PR4532	PR5032	PR5032	PR6031	PR6031	PR7031	PR7031	PR8031
93.9	15.34	PR1531	PR1531	PR2031	PR2531	PR2731	3PR031	PR3531	PR3731	PR4031	PR4532	PR4532	PR5031	PR6031	PR6031	PR6031	PR7031	PR7031	PR8031	PR8031
95.7	15.05	PR1531	PR1531	PR2031	PR2531	PR2731	PR3031	PR3531	PR3731	PR4031	PR4532	PR4532	PR5031	PR5032	PR6031	PR6031	PR7031	PR7031	PR8031	PR8031
104.7	13.75	PR1531	PR1531	PR2031	PR2531	PR2731	PR3031	PR3531	PR4031	PR4532	PR4532	PR5031	PR5031	PR6031	PR6031	PR7031	PR7031	PR8031	PR8031	PR9031
106.7	13.50	PR1531	PR1531	PR2031	PR2531	PR2731	PR3031	PR3531	PR3731	PR4031	PR4532	PR4532	PR5031	PR5031	PR6031	PR6031	PR7031	PR7031	PR8031	PR8031
115.9	12.42	PR1531	PR1531	PR2031	PR2531	PR3031	PR3531	PR3531	PR4031	PR4532	PR4532	PR5031	PR5031	PR6031	PR6031	PR6031	PR7031	PR7031	PR8031	PR9031
117.16	12.29	PR1531	PR1531	PR2031	PR2531	PR2731	PR3031	PR3532	PR4031	PR4532	PR4532	PR5031	PR6031	PR6031	PR6031	PR7031	PR7031	PR8031	PR8031	PR9031
127.2	11.32	PR1531	PR1731	PR2531	PR2731	PR3031	PR3531	PR3531	PR4031	PR4532	PR4532	PR5031	PR6031	PR6031	PR6031	PR7031	PR7031	PR8031	PR8031	PR9031
130.66	11.02	PR1531	PR1731	PR2531	PR2731	PR2731	PR3531	PR3731	PR4531	PR4532	PR5031	PR5031	PR6031	PR6031	PR6031	PR7031	PR8031	PR8031	PR9031	PR9031
141.8	10.16	PR1531	PR1731	PR2531	PR2731	PR3031	PR3531	PR3731	PR4531	PR4532	PR5031	PR5031	PR6031	PR6031	PR6031	PR7031	PR7031	PR8031	PR8031	PR10031
144.57	9.96	PR1531	PR1731	PR2531	PR3031	PR3531	PR3531	PR4031	PR4531	PR4532	PR5031	PR5031	PR6031	PR6031	PR6031	PR7031	PR7031	PR8031	PR8031	PR9031
158.7	9.07	PR1531	PR1731	PR2531	PR3031	PR3531	PR3531	PR4031	PR4531	PR4532	PR5031	PR6031	PR6031	PR6031	PR6031	PR7031	PR7031	PR8031	PR8031	PR10031
177	8.14	PR1531	PR2031	PR2731	PR3031	PR3531	PR3531	PR4031	PR4531	PR5031	PR6031	PR6031	PR6031	PR7031	PR7031	PR8031	PR8031	PR9031	PR9031	PR10031
192.1	7.50	PR1731	PR2531	PR2731	PR3531	PR3531	PR4031	PR4531	PR5031	PR6031	PR6031	PR6031	PR7031	PR8031	PR8031	PR9031	PR9031	PR10031	PR10031	PR12031
198	7.27	PR1531	PR2031	PR3031	PR3531	PR3531	PR4031	PR4531	PR4532	PR6031	PR6031	PR6031	PR7031	PR7031	PR8031	PR8031	PR9031	PR9031	PR9031	PR10031
220.8	6.52	PR1731	PR2031	PR3031	PR3531	PR3531	PR4031	PR5031	PR5031	PR6031	PR6031	PR6031	PR7031	PR7031	PR8031	PR8031	PR9031	PR9031	PR9031	PR10031
239.7	6.01	PR2031	PR2531	PR3031	PR3531	PR3731	PR4531	PR5031	PR6031	PR6031	PR7031	PR7031	PR8031	PR8031	PR9031	PR9031	PR10031	PR10031	PR12031	PR12031
299.1	4.81	PR2031	PR2731	PR3531	PR3731	PR4031	PR4531	PR5031	PR6031	PR7031	PR7031	PR8031	PR8031	PR9031	PR9031	PR10031	PR10031	PR12031	PR12031	PR14031
327	4.40	PR1741	PR2541	PR3041	PR3541	PR3542	PR4041	PR4542	PR5042	PR6041	PR6041	PR7041	PR7041	PR7041	PR8041	PR8041	PR9041	PR9041	PR9041	PR10041
359	4.01	PR1741	PR2541	PR3041	PR3541	PR3742	PR4542	PR5041	PR6041	PR6041	PR7041	PR7041	PR8041	PR8041	PR9041	PR9041	PR10041	PR10041	PR10041	PR12041
400	3.60	PR2041	PR2741	PR3541	PR3541	PR3742	PR4542	PR5041	PR6041	PR6041	PR7041	PR7041	PR8041	PR8041	PR9041	PR10041	PR10041	PR10041	PR10041	PR12041
443	3.25	PR2041	PR2741	PR3541	PR3541	PR3742	PR4542	PR5041	PR6041	PR6041	PR7041	PR7041	PR8041	PR8041	PR9041	PR10041	PR10041	PR10041	PR10041	PR12041
455	3.16	PR2041	PR2741	PR3541	PR3541	PR3742	PR4542	PR5041	PR6041	PR6041	PR7041	PR7041	PR8041	PR8041	PR9041	PR10041	PR10041	PR10041	PR10041	PR12041
494	2.91	PR2041	PR2741	PR3541	PR3741	PR4041	PR4542	PR5041	PR6041	PR7041	PR7041	PR7041	PR8041	PR9041	PR9041	PR10041	PR10041	PR12041	PR12041	PR14041
503	2.86	PR2041	PR2741	PR3541	PR3741	PR4041	PR4542	PR5041	PR6041	PR7041	PR7041	PR7041	PR8041	PR9041	PR9041	PR10041	PR10041	PR12041	PR12041	PR14041
552	2.61	PR2541	PR2741	PR3541	PR3741	PR4041	PR4542	PR6041	PR7041	PR7041	PR7041	PR8041	PR8041	PR9041	PR9041	PR10041	PR10041	PR12041	PR12041	PR14041
604	2.38	PR2541	PR3041	PR3741	PR4041	PR4542	PR5041	PR6041	PR7041	PR7041	PR7041	PR8041	PR8041	PR9041	PR10041	PR10041	PR12041	PR12041	PR14041	PR14041
689	2.09	PR2541	PR3041	PR3541	PR4041	PR4542	PR5041	PR6041	PR7041	PR7041	PR7041	PR8041	PR8041	PR9041	PR10041	PR10041	PR12041	PR12041	PR14041	PR14041
734	1.96	PR2541	PR3541	PR3741	PR4541	PR4542	PR5041	PR6041	PR7041	PR9041	PR8041	PR8041	PR9041	PR10041	PR10041	PR10041	PR12041	PR12041	PR14041	PR16041
754	1.91	PR2741	PR3541	PR3741	PR4541	PR5041	PR6041	PR6041	PR7041	PR9041	PR8041	PR8041	PR10041	PR10041	PR12041	PR12041	PR12041	PR14041	PR14041	PR16041
769	1.87	PR2541	PR3041	PR3741	PR4541	PR4542	PR5041	PR6041	PR7041	PR9041	PR8041	PR8041	PR9041	PR10041	PR10041	PR10041	PR12041	PR12041	PR14041	PR14041
818	1.76	PR2741	PR3541	PR4041	PR4541	PR5041	PR6041	PR7041	PR7041	PR9041	PR9041	PR9041	PR10041	PR10041	PR10041	PR12041	PR12041	PR14041	PR14041	PR16041
844	1.71	PR2741	PR3541	PR3741	PR4541	PR5041	PR6041	PR6041	PR7041	PR9041	PR8041	PR9041	PR10041	PR10041	PR12041	PR12041	PR12041	PR14041	PR14041	PR16041
916	1.57	PR3041	PR3541	PR4041	PR4541	PR5041														



FOOT MOUNTING DIMENSIONS

Note : All the dimension are in mm.

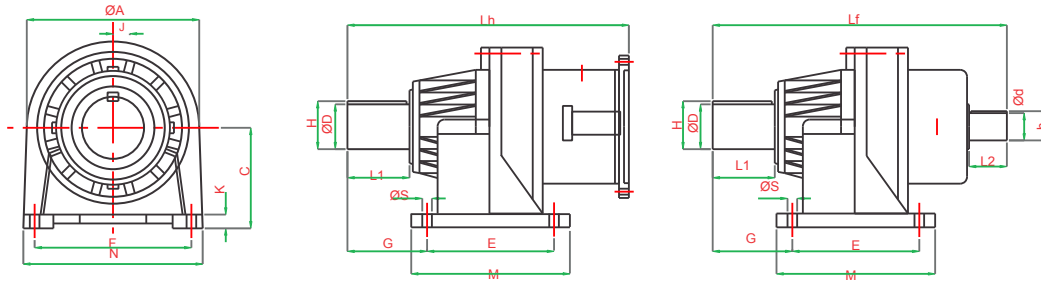
SINGLE STAGE																				
Model	OUTPUT				INPUT				MOUNTING								GENERAL			Motor*
	Dj6	H	Jp9	L1	dj6	h	jp9	L2	E	C	F	S	K	G	M	N	A	Lf	Lh	Frame
PR1011	19	21.5	6	30	14	16	5	18	60	80	100	9	10	44	85	125	90	154	140	63
PR1211	24	27	8	35	14	16	5	18	90	100	120	14	12	64	120	150	120	174	160	63-71
PR1511	28	31	8	40	28	31	8	40	90	100	120	14	12	64	120	150	135	265	245	80-90
PR1711	38	41	10	55	28	31	8	40	90	100	140	14	15	71	120	170	150	285	265	90-100
PR2011	42	45	12	62	28	31	8	40	100	110	160	14	15	82	140	190	165	298	278	112
PR2511	50	53.5	14	75	38	41	10	50	110	120	180	14	15	97	150	220	200	347	327	132
PR2711	60	64	18	82	50	54	14	70	130	130	210	18	18	107	170	260	220	406	367	132
PR3011	65	69	18	90	50	54	14	70	150	140	210	18	20	117	200	260	250	447	408	160
DOUBLE STAGE																				
Model	OUTPUT				INPUT				MOUNTING								GENERAL			Motor*
	Dj6	H	Jp9	L1	dj6	h	jp9	L2	E	C	F	S	K	G	M	N	A	Lf	Lh	Frame
PR1021	19	21.5	6	30	14	16	5	18	60	80	100	9	10	44	85	125	90	171	157	63
PR1221	24	27	8	35	14	16	5	18	90	100	120	14	12	64	120	150	120	190	176	63-71
PR1521	28	31	8	40	28	31	8	40	90	100	120	14	12	64	120	150	135	312	292	63-90
PR1721	38	41	10	55	28	31	8	40	90	100	140	14	15	71	120	170	150	333	313	71-100
PR2021	42	45	12	62	28	31	8	40	100	110	160	14	15	82	140	190	165	349	329	80-112
PR2521	50	53.5	14	75	28	31	8	40	110	120	180	14	15	97	150	220	200	367	347	90-100
PR2522	50	53.5	14	75	38	41	10	50	110	120	180	14	15	97	150	220	200	398	378	112-132
PR2721	60	64	18	82	28	31	8	40	130	130	210	18	18	107	170	260	220	412	392	90-112
PR2722	60	64	18	82	50	54	14	70	130	130	210	18	18	107	170	260	220	465	426	132
PR3021	65	69	18	90	50	54	14	70	150	140	210	18	20	117	200	260	250	512	473	90-112
TRIPLE STAGE																				
Model	OUTPUT				INPUT				MOUNTING								GENERAL			Motor*
	Dj6	H	Jp9	L1	dj6	h	jp9	L2	E	C	F	S	K	G	M	N	A	Lf	Lh	Frame
PR1031	19	21.5	6	30	14	16	5	18	60	80	100	9	10	44	85	125	90	187	173	63
PR1231	24	27	8	35	14	16	5	18	90	100	120	14	12	64	120	150	120	216	202	63-71
PR1531	28	31	8	40	28	31	8	40	90	100	120	14	12	64	120	150	135	359	339	80-90
PR1731	38	41	10	55	28	31	8	40	90	100	140	14	15	71	120	170	150	380	360	63-90
PR2031	42	45	12	62	28	31	8	40	100	110	160	14	15	82	140	190	165	393	373	63-90
PR2531	50	53.5	14	75	28	31	8	40	110	120	180	14	15	97	150	220	200	415	395	71-100
PR2731	60	64	18	82	28	31	8	40	130	130	210	18	18	107	170	260	220	457	437	63-100
PR3031	65	69	18	90	28	31	8	40	150	140	210	18	20	117	200	260	250	476	456	71-112
QUADRUPLE STAGE																				
Model	OUTPUT				INPUT				MOUNTING								GENERAL			Motor*
	Dj6	H	Jp9	L1	dj6	h	jp9	L2	E	C	F	S	K	G	M	N	A	Lf	Lh	Frame
PR1041	19	21.5	6	30	14	16	5	18	60	80	100	9	10	44	85	125	90	205	191	63
PR1241	24	27	8	35	14	16	5	18	90	100	120	14	12	64	120	150	120	243	226	63
PR1541	28	31	8	40	28	31	8	40	90	100	120	14	12	64	120	150	135	406	386	63
PR1741	38	41	10	55	28	31	8	40	90	100	140	14	15	71	120	170	150	428	408	63-71
PR2041	42	45	12	62	28	31	8	40	100	110	160	14	15	82	140	190	165	440	420	63-71
PR2541	50	53.5	14	75	28	31	8	40	110	120	180	14	15	97	150	220	200	462	442	63-80
PR2741	60	69	18	82	28	31	8	40	130	130	210	18	18	107	170	260	220	504	484	63-90
PR3041	65	69	18	90	28	31	8	40	150	140	210	18	20	117	200	260	250	520	500	63-90



FOOT MOUNTING DIMENSIONS

Note : All the dimension are in mm.

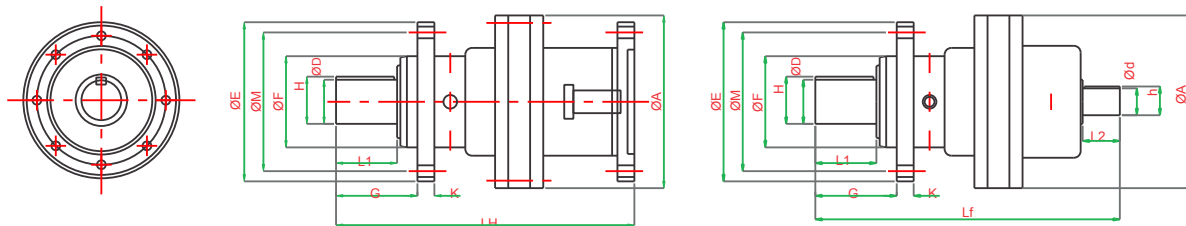
SINGLE STAGE																				
Model	OUTPUT				INPUT				MOUNTING								GENERAL			Motor*
	Dj6	H	Jp9	L1	dj6	h	jp9	L2	E	C	F	S	K	G	M	N	A	Lf	Lh	Frame
PR3511	80	85.5	22	110	50	53.5	14	70	200	160	300	18	25	137	250	350	---	530	491	---
PR3711	85	90.5	22	120	50	53.5	14	70	250	180	300	22	25	147	300	370	---	548	509	---
PR4011	95	100	25	135	50	53.5	14	70	250	200	350	22	25	162	300	400	---	586	547	---
PR4511	110	116	28	170	70	75	20	100	250	200	350	22	25	197	300	400	---	693	624	---
PR5011	120	127	32	180	70	75	20	100	300	250	400	26	30	213	360	460	---	732	663	---
DOUBLE STAGE																				
Model	OUTPUT				INPUT				MOUNTING								GENERAL			Motor*
	Dj6	H	Jp9	L1	dj6	h	jp9	L2	E	C	F	S	K	G	M	N	A	Lf	Lh	Frame
PR3521	80	85.5	22	110	50	53.5	14	70	200	160	300	18	25	137	250	350	---	567	528	112-132
PR3721	85	90.5	22	120	50	53.5	14	70	250	180	300	22	25	147	300	370	---	619	580	160
PR4021	95	100	25	135	50	53.5	14	70	250	200	350	22	25	162	300	400	---	657	618	132-160
PR4521	110	116	28	170	50	53.5	14	70	250	200	350	22	25	197	300	400	---	726	687	132-160
PR5021	120	127	32	180	50	53.5	14	70	300	250	400	26	30	213	360	460	---	773	734	160-200
PR5022	120	127	32	180	70	75	20	100	300	250	400	26	30	213	360	460	---	839	770	200-225
TRIPLE STAGE																				
Model	OUTPUT				INPUT				MOUNTING								GENERAL			Motor*
	Dj6	H	Jp9	L1	dj6	h	jp9	L2	E	C	F	S	K	G	M	N	A	Lf	Lh	Frame
PR3531	80	85.5	22	105	28	31	8	40	200	160	300	18	25	137	250	350	---	573	553	80-112
PR3532	80	85.5	22	105	38	41	10	50	200	160	300	18	25	137	250	350	---	593	573	132
PR3731	85	90.5	22	120	50	53.5	14	70	250	180	300	22	25	147	300	370	---	644	605	80-132
PR4031	95	100	25	135	50	53.5	14	70	250	200	350	22	25	162	300	400	---	722	683	90-160
PR4531	110	116	28	170	38	41	10	50	250	200	350	22	25	197	300	400	---	738	718	90-132
PR4532	110	116	28	170	50	53.5	14	70	250	200	350	22	25	197	300	400	---	802	763	132-160
PR5031	120	127	32	180	50	53.5	14	70	300	250	400	26	30	213	360	460	---	844	805	132-160
PR5032	120	127	32	180	50	53.5	14	70	300	250	400	26	30	213	360	460	---	853	814	---
QUADRUPLE STAGE																				
Model	OUTPUT				INPUT				MOUNTING								GENERAL			Motor*
	Dj6	H	Jp9	L1	dj6	h	jp9	L2	E	C	F	S	K	G	M	N	A	Lf	Lh	Frame
PR3541	80	85.5	22	110	28	31	8	40	200	160	300	18	25	137	250	350	290	621	601	63-90
PR3542	80	85.5	22	110	28	31	8	40	200	160	300	18	25	137	250	350	290	613	593	90-100
PR3741	85	90.5	22	120	28	31	8	40	250	180	300	22	25	147	300	370	310	639	619	63-90
PR3742	85	90.5	22	120	28	31	8	40	250	180	300	22	25	147	300	370	310	647	627	90-100
PR4041	95	100	25	135	28	31	8	40	250	200	350	22	25	162	300	400	330	700	680	71-112
PR4541	110	116	28	170	28	31	8	40	250	200	350	22	25	197	300	400	355	758	738	80-100
PR4542	110	116	28	170	28	31	8	40	250	200	350	22	25	197	300	400	355	780	760	90-112
PR5041	120	127	32	180	28	31	8	40	300	250	400	26	30	213	360	460	400	822	802	80-112
PR5042	120	127	32	180	50	53.5	14	70	300	250	400	26	30	213	360	460	400	909	870	132-160



Note : All the dimension are in mm.

FOOT MOUNTING DIMENSIONS

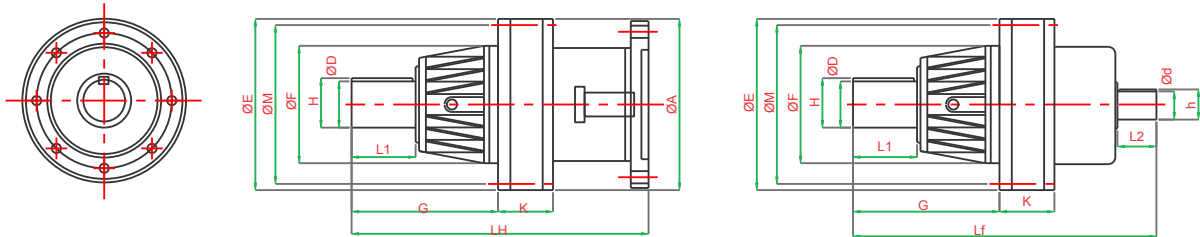
DOUBLE STAGE																				
Model	OUTPUT				INPUT				MOUNTING								GENERAL			Motor*
	Dj6	H	Jp9	L1	dj6	h	jp9	L2	E	C	F	S	K	G	M	N	A	Lf	Lh	Frame
PR6021	150	158	36	200	70	74.5	20	100	325	300	430	33	40	270	410	530	490	892	831	180-200
PR7021	165	174	40	220	70	74.5	20	100	350	340	490	33	40	290	440	590	560	960	895	180-200
PR8021	180	190	45	250	70	74.5	20	100	380	375	540	33	40	340	460	650	630	1060	995	200-250
PR9021	195	205	45	270	110	116	28	170	440	410	600	39	50	350	540	730	700	1220	1080	200-250
TRIPLE STAGE																				
Model	OUTPUT				INPUT				MOUNTING								GENERAL			Motor*
	Dj6	H	Jp9	L1	dj6	h	jp9	L2	E	C	F	S	K	G	M	N	A	Lf	Lh	Frame
PR6031	150	158	36	200	50	53.5	14	70	325	300	430	33	40	270	410	530	490	960	910	132-180
PR7031	165	174	40	220	50	53.5	14	70	350	340	490	33	40	290	440	590	560	1020	970	160-200
PR8031	180	190	45	250	50	53.5	14	70	380	375	540	33	40	340	460	650	630	1130	1080	160-200
PR9031	195	205	45	270	70	74.5	20	100	440	410	600	39	50	350	540	730	700	1225	1150	160-200
PR10031	220	231	50	300	70	74.5	20	100	525	450	685	39	50	385	620	820	800	1325	1250	180-200
PR12031	260	273	56	350	110	116	28	170	590	550	800	45	50	455	700	950	925	1670	1530	200-250
QUADRUPLE STAGE																				
Model	OUTPUT				INPUT				MOUNTING								GENERAL			Motor*
	Dj6	H	Jp9	L1	dj6	h	jp9	L2	E	C	F	S	K	G	M	N	A	Lf	Lh	Frame
PR6041	150	158	36	200	50	53.5	14	70	325	300	430	33	40	270	410	530	490	1020	970	100-160
PR7041	165	174	40	220	50	53.5	14	70	350	340	490	33	40	290	440	590	560	1120	1070	112-180
PR8041	180	190	45	250	50	53.5	14	70	380	375	540	33	40	340	460	650	630	1200	1150	112-180
PR9041	195	205	45	270	50	53.5	14	70	440	410	600	39	50	350	540	730	700	1280	1230	132-180
PR10041	220	231	50	300	50	53.5	14	70	525	450	685	39	50	385	620	820	800	1380	1330	132-180
PR12041	260	273	56	350	50	53.5	14	70	590	550	800	45	50	455	700	950	925	1660	1610	180-200
PR14041	300	314	70	400	70	74.5	20	100	710	600	950	45	50	540	820	1150	1100	2050	1980	200-250
PR16041	350	365	80	450	70	74.5	20	100	760	650	1075	45	50	600	870	1250	1200	2350	2250	225-250



Note : All the dimension are in mm.

FLANGE MOUNTING DIMENSIONS

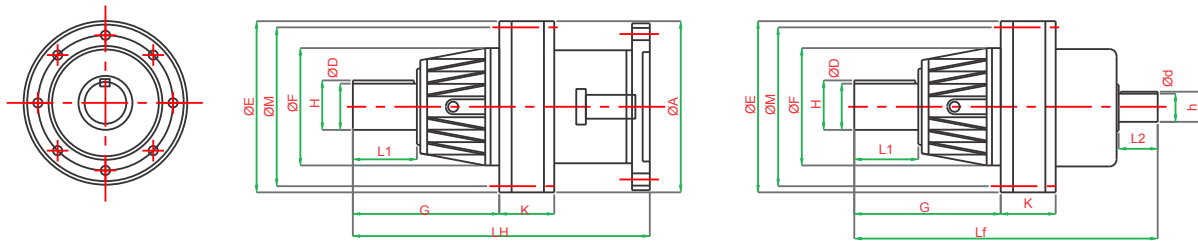
SINGLE STAGE																			
Model	OUTPUT				INPUT				MOUNTING						GENERAL			Motor*	
	Dj6	H	Jp9	L1	dj6	h	jp9	L2	E	F	S	K	G	M	N	A	Lf	Lh	Frame
PR1011	19	21.5	6	30	14	16	5	18	90	60	5.5	10	34	75	4	90	154	140	63
PR1211	24	27	8	35	14	16	5	18	120	80	6.5	10	40	105	8	120	174	160	63-71
PR1511	28	31	8	40	28	31	8	40	135	80	8.5	10	45	115	8	135	265	245	80-90
PR1711	38	41	10	55	28	31	8	40	150	100	8.5	12	68	135	8	150	285	265	90-100
PR2011	42	45	12	62	28	31	8	40	165	115	11	15	76	145	8	165	298	278	112
PR2511	50	53.5	14	75	38	41	10	50	200	130	13	18	90	165	8	200	347	327	132
PR2711	60	64	18	82	50	53.5	14	70	220	160	13	15	92	190	8	220	406	367	132
PR3011	65	69	18	90	50	53.5	14	70	220	160	13	15	106	190	8	250	447	408	160
DOUBLE STAGE																			
Model	OUTPUT				INPUT				MOUNTING						GENERAL			Motor*	
	Dj6	H	Jp9	L1	dj6	h	jp9	L2	E	F	S	K	G	M	N	A	Lf	Lh	Frame
PR1021	19	21.5	6	30	14	16	5	18	90	60	5.5	10	34	75	4	90	171	157	63
PR1221	24	27	8	35	14	16	5	18	120	80	6.5	10	40	105	8	120	190	176	63-71
PR1521	28	31	8	40	28	31	8	40	135	80	8.5	10	45	115	8	135	312	292	63-90
PR1721	38	41	10	55	28	31	8	40	150	100	8.5	12	68	135	8	150	333	313	71-100
PR2021	42	45	12	62	28	31	8	40	165	115	11	15	76	145	8	165	349	329	80-112
PR2521	50	53.5	14	75	28	31	8	40	200	130	13	18	90	165	8	200	367	347	90-100
PR2522	50	53.5	14	75	38	41	10	50	200	130	13	18	90	165	8	200	398	378	112-132
PR2721	60	64	18	82	28	31	8	40	220	160	13	15	92	190	8	220	412	392	90-112
PR2722	60	64	18	82	50	53.5	14	70	220	160	13	15	92	190	8	220	465	426	132
PR3021	65	69	18	90	50	53.5	14	70	220	160	13	15	106	190	8	250	512	473	90-112
TRIPLE STAGE																			
Model	OUTPUT				INPUT				MOUNTING						GENERAL			Motor*	
	Dj6	H	Jp9	L1	dj6	h	jp9	L2	E	F	S	K	G	M	N	A	Lf	Lh	Frame
PR1031	19	21.5	6	30	14	16	5	18	90	60	5.5	10	34	75	4	90	187	173	63
PR1231	24	27	8	35	14	16	5	18	120	80	6.5	10	40	105	8	120	216	202	63-71
PR1531	28	31	8	40	28	31	8	40	135	80	8.5	10	45	115	8	135	359	339	80-90
PR1731	38	41	10	55	28	31	8	40	150	100	8.5	12	68	135	8	150	380	360	63-90
PR2031	42	45	12	62	28	31	8	40	165	115	11	15	76	145	8	165	393	373	63-90
PR2531	50	53.5	14	75	28	31	8	40	200	130	13	18	90	165	8	200	415	395	71-100
PR2731	60	64	18	82	28	31	8	40	220	160	13	15	92	190	8	220	457	437	63-100
PR3031	65	69	18	90	28	31	8	40	220	160	13	15	106	190	8	250	476	456	71-112
QUADRUPLE STAGE																			
Model	OUTPUT				INPUT				MOUNTING						GENERAL			Motor*	
	Dj6	H	Jp9	L1	dj6	h	jp9	L2	E	F	S	K	G	M	N	A	Lf	Lh	Frame
PR1041	19	21.5	6	30	14	16	5	18	90	60	5.5	10	34	75	4	90	205	191	63
PR1241	24	27	8	35	14	16	5	18	120	80	6.5	10	40	105	8	120	243	226	63
PR1541	28	31	8	40	28	31	8	40	135	80	8.5	10	45	115	8	135	406	386	63
PR1741	38	41	10	55	28	31	8	40	150	100	8.5	12	68	135	8	150	428	408	63-71
PR2041	42	45	12	62	28	31	8	40	165	115	11	15	76	145	8	165	440	420	63-71
PR2541	50	53.5	14	75	28	31	8	40	200	130	13	18	90	165	8	200	462	442	63-80
PR2741	60	69	18	82	28	31	8	40	220	160	13	15	92	190	8	220	504	484	63-90
PR3041	65	69	18	90	28	31	8	40	220	160	13	15	106	190	8	250	520	500	63-90



FLANGE MOUNTING DIMENSIONS

Note : All the dimension are in mm.

SINGLE STAGE																			
Model	OUTPUT				INPUT				MOUNTING						GENERAL			Motor	
	Dj6	H	Jp9	L1	dj6	h	jp9	L2	E	F	S	K	G	M	N	A	Lf	Lh	Frame
PR3511	80	85.5	22	110	50	53.5	14	70	290	240	13	85	262	265	12	---	530	491	---
PR3711	85	90.5	22	120	50	53.5	14	70	310	250	17	90	275	285	12	---	548	509	---
PR4011	95	100	25	135	50	53.5	14	70	330	270	17	95	310	300	12	---	586	547	---
PR4511	110	116	28	170	70	75	20	100	355	290	17	110	360	325	12	---	693	624	---
PR5011	120	127	32	180	70	75	20	100	400	335	17	120	385	360	12	---	732	663	---
DOUBLE STAGE																			
Model	OUTPUT				INPUT				MOUNTING						GENERAL			Motor	
	Dj6	H	Jp9	L1	dj6	h	jp9	L2	E	F	S	K	G	M	N	A	Lf	Lh	Frame
PR3521	80	85.5	22	110	50	53.5	14	70	290	240	13	85	262	265	12	---	567	528	112-132
PR3721	85	90.5	22	120	50	53.5	14	70	310	250	17	90	275	285	12	---	619	580	160-132
PR4021	95	100	25	135	50	53.5	14	70	330	270	17	95	310	300	12	---	657	618	160-132
PR4521	110	116	28	170	50	53.5	14	70	355	290	17	110	360	325	12	---	726	687	160-160
PR5021	120	127	32	180	50	53.5	14	70	400	335	17	120	385	360	12	---	773	734	200-200
PR5022	120	127	32	180	70	75	20	100	400	335	17	120	385	360	12	839	770	200-225	
TRIPLE STAGE																			
Model	OUTPUT				INPUT				MOUNTING						GENERAL			Motor	
	Dj6	H	Jp9	L1	dj6	h	jp9	L2	E	F	S	K	G	M	N	A	Lf	Lh	Frame
PR3531	80	85.5	22	105	28	31	8	40	290	240	13	85	262	265	12	---	573	553	80-112
PR3532	80	85.5	22	105	38	41	10	50	290	240	13	85	262	265	12	---	593	573	132
PR3731	85	90.5	22	120	50	53.5	14	70	310	250	17	90	275	285	12	---	644	605	80-132
PR4031	95	100	25	135	50	53.5	14	70	330	270	17	95	310	300	12	---	722	683	90-160
PR4531	110	116	28	170	38	41	10	50	355	290	17	110	360	325	12	---	738	718	90-132
PR4532	110	116	28	170	50	53.5	14	70	355	290	17	110	360	325	12	---	802	763	132-160
PR5031	120	127	32	180	50	53.5	14	70	400	335	17	120	385	360	12	---	844	805	160
PR5032	120	127	32	180	50	53.5	14	70	400	335	17	120	385	360	12	---	853	814	---
QUADRUPLE STAGE																			
Model	OUTPUT				INPUT				MOUNTING						GENERAL			Motor	
	Dj6	H	Jp9	L1	dj6	h	jp9	L2	E	F	S	K	G	M	N	A	Lf	Lh	Frame
PR3541	80	85.5	22	110	28	31	8	40	290	240	13	85	262	265	12	290	621	601	63-90
PR3542	80	85.5	22	110	28	31	8	40	290	240	13	85	262	265	12	290	613	593	90-100
PR3741	85	90.5	22	120	28	31	8	40	310	250	17	90	275	285	12	310	639	619	63-90
PR3742	85	90.5	22	120	28	31	8	40	310	250	17	90	275	285	12	310	647	627	90-100
PR4041	95	100	25	135	28	31	8	40	330	270	17	95	310	300	12	330	700	680	71-112
PR4541	110	116	28	170	28	31	8	40	355	290	17	110	360	325	12	355	758	738	80-100
PR4542	110	116	28	170	28	31	8	40	355	290	17	110	360	325	12	355	780	760	90-112
PR5041	120	127	32	180	28	31	8	40	400	335	17	120	385	360	12	400	822	802	80-112
PR5042	120	127	32	180	50	53.5	14	70	400	335	17	120	385	360	12	400	909	870	132-160



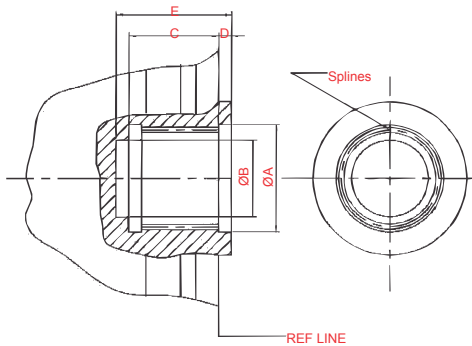
Note : All the dimension are in mm.

FLANGE MOUNTING DIMENSIONS

DOUBLE STAGE																		
Model	OUTPUT				INPUT				MOUNTING						GENERAL			
	Dj6	H	Jp9	L1	dj6	h	jp9	L2	E	F	S	K	G	M	N	A	Lf	Lh
PR6021	150	158	36	200	70	74.5	20	100	490	400	21	145	340	440	24	490	892	831
PR7021	165	174	40	220	70	74.5	20	100	560	470	21	160	370	510	24	560	960	895
PR8021	180	190	45	250	70	74.5	20	100	630	540	26	180	430	580	24	630	1060	995
PR9021	195	205	45	270	110	116	28	170	700	600	26	210	435	650	24	700	1220	1080
TRIPLE STAGE																		
Model	OUTPUT				INPUT				MOUNTING						GENERAL			
	Dj6	H	Jp9	L1	dj6	h	jp9	L2	E	F	S	K	G	M	N	A	Lf	Lh
PR6031	150	158	36	200	50	53.5	14	70	490	400	21	145	340	440	24	490	960	910
PR7031	165	174	40	220	50	53.5	14	70	560	470	21	160	370	510	24	560	1020	970
PR8031	180	190	45	250	50	53.5	14	70	630	540	26	180	430	580	24	630	1130	1080
PR9031	195	205	45	270	70	74.5	20	100	700	600	26	210	435	650	24	700	1225	1150
PR10031	220	231	50	300	70	74.5	20	100	800	675	26	240	470	735	24	800	1325	1250
PR12031	260	273	56	350	110	116	28	170	925	800	26	280	560	850	24	925	1670	1530
QUADRUPLE STAGE																		
Model	OUTPUT				INPUT				MOUNTING						GENERAL			
	Dj6	H	Jp9	L1	dj6	h	jp9	L2	E	F	S	K	G	M	N	A	Lf	Lh
PR6041	150	158	36	200	50	53.5	14	70	490	400	21	145	340	440	24	490	1020	970
PR7041	165	174	40	220	50	53.5	14	70	560	470	21	160	370	510	24	560	1120	1070
PR8041	180	190	45	250	50	53.5	14	70	630	540	26	180	430	580	24	630	1200	1150
PR9041	195	205	45	270	50	53.5	14	70	700	600	26	210	435	650	24	700	1280	1230
PR10041	220	231	50	300	50	53.5	14	70	800	675	26	240	470	735	24	800	1380	1330
PR12041	260	273	56	350	50	53.5	14	70	925	800	26	280	560	850	24	925	1660	1610
PR14041	300	314	70	400	70	74.5	20	100	1100	950	26	320	680	1000	24	1100	2050	1980
PR16041	350	365	80	450	70	74.5	20	100	1200	1075	26	360	750	1125	24	1200	2350	2250

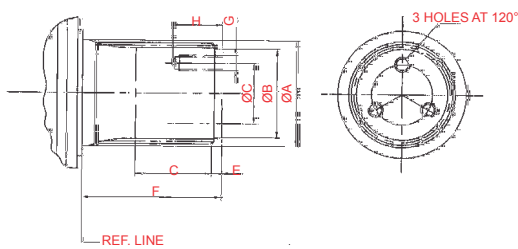


Spline Data (Internal)



MODEL	AH8	BH8	C	D	E	SPLINEDATA	
PR2511	42	30	30	40	5	A 40 x 35	IS:3665-1966
PR2711	46	35	35	45	5	A 45 x 40	IS:3665-1966
PR3011	55	40	45	55	5	A 50 x 45	IS:3665-1966
PR3511	60	50	55	65	5	A 58 x 53	IS:3665-1966
PR3711	65	55	60	70	5	A 63 x 54	IS:3665-1966
PR4011	70	60	65	80	9	A 68 x 63	IS:3665-1966
PR4511	85	70	80	100	10	A 80 x 75	IS:3665-1966
PR5011	95	80	85	105	10	A 90 x 85	IS:3665-1966
PR6011	125	100	90	110	10	N 120 x 5 x 9H	DIN 5480
PR7011	135	110	95	115	10	N 130 x 5 x 9H	DIN 5480
PR8011	145	125	100	125	10	N 140 x 5 x 9H	DIN 5480
PR9011	160	135	120	150	10	N 150 x 5 x 9H	DIN 5480
PR10011	180	150	150	175	10	N 170 x 5 x 9H	DIN 5480
PR12011	205	175	170	210	20	N 200 x 5 x 9H	DIN 5480
PR14011	245	210	190	230	20	N 240 x 5 x 9H	DIN 5480
PR16011	285	250	230	270	20	N 280 x 5 x 9H	DIN 5480

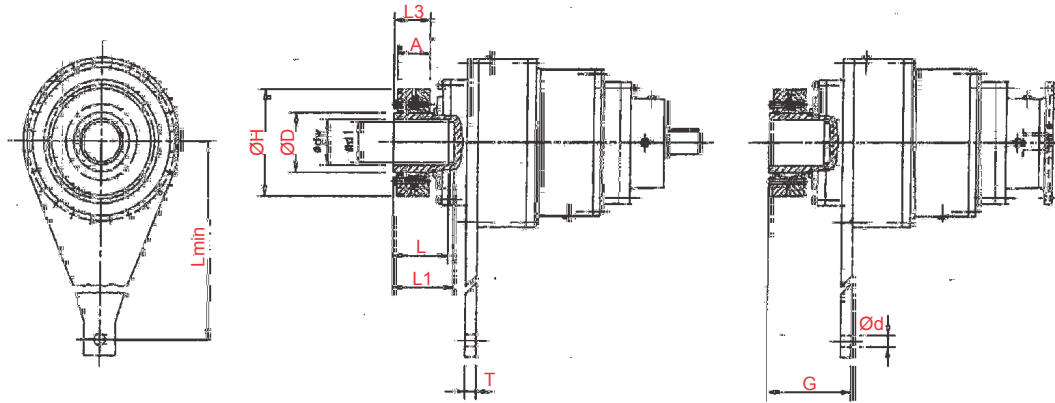
Spline Data (External)



MODEL	A f8	B f7	C	D	E	F	G X H	SPLINE DATA
PR2511	50	40	25	25	5	50	M8 X 15 B 48 X 43	IS:3665-1966
PR2711	55	45	28	28	5	55	M8 X 15 B 53 x 48	IS:3665-1966
PR3011	60	50	35	35	5	60	M8 X 15 A 58 x 53	IS:3665-1966
PR3511	70	60	40	40	5	70	M10 X 25 B 68 x 63	IS:3665-1966
PR3711	75	60	40	40	5	75	M8 X 15 B 72 X 67	IS:3665-1966
PR4011	80	65	45	45	5	80	M10 X 25 B 75 X 70	IS:3665-1966
PR4511	85	70	45	50	10	90	M10 X 25 B 80 X 75	IS:3665-1966
PR5011	100	90	70	70	10	110	M12 X 30 B 98 X 93	IS:3665-1966
PR6011	145	125	100	95	10	150	M16 X 30 W 140 X 5 X 8F	DIN 5480
PR7011	160	130	110	105	10	160	M8 X 15 W 150 X 5 X 8F	DIN 5480
PR8011	170	145	120	115	15	180	M16 X 30 W 170 X 5 X 8F	DIN 5480
PR9011	190	160	130	125	15	190	M8 X 15 W 190 X 5 X 8F	DIN 5480
PR10011	210	180	150	150	20	230	M20 X 35 W 200 X 5 X 38	DIN 5480
PR12011	260	225	190	200	20	300	M20 X 35 W 250 X 8 X 30	DIN 5480
PR14011	290	250	120	225	20	325	M20 X 35 W 280 X 8 X 34	DIN 5480
PR16011	325	290	250	250	20	360	M24 X 45 W 320 X 8 X 38	DIN 5480



Shrink Disc / Torque Arm Details



All Dimensions in mm

MODEL	OUTPUT SHAFT				SHRINK DISC				TORQUE ARM DETAILS			
	D	dw	d1	L	L1	H	L3	A	L min	d	T	G
PR3011	68	50	45	60	70	115	35	31	150	18	12	56
		60										
PR3511	80	65	55	65	75	145	38	33	200	20	16	197
		70										
PR4011	90	65	60	70	80	155	45	39	200	20	16	225
		75										
PR4511	110	75	70	75	85	185	57	50	250	24	20	250
		85										
PR5011	125	85	80	90	100	215	61	54	300	24	20	270
		95										
PR6011	140	95	90	100	110	230	69	61	350	28	25	270
		105										
PR8011	175	125	120	130	140	300	81	71	425	28	32	320
		135										
PR10011	220	160	150	160	170	370	114	104	500	32	32	350
		170										
PR12011	260	190	1820	200	215	430	133	120	575	38	32	394
		210										
PR10411	300	230	220	240	260	485	155	142	650	42	50	476
		245										
PR16011	350	270	260	280	300	580	175	162	700	48	50	525
		285										



PLANETARY DRIVES



Mounting : shaft mounted



Mounting : Flange



Mounting : Foot .

Rating : Up to 1500000 Nm

Ratio : Up to 25000/1

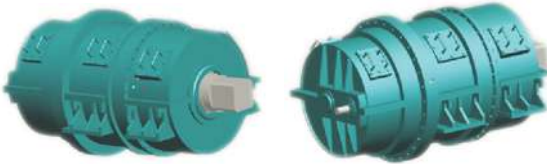
Mounting : Foot, Flange & Shaft Mounted

Application : Industrial Sectors - Sugar, Steel, Paper, Cement, Chemical, Construction.



SPECIAL APPLICATIONS

SUGAR MILL DRIVE



WINCH DRIVE WITH HYDRAULIC BRAKE



TRANSIT MIXER DRIVE



WHEEL / FINAL DRIVE WITH HYDRAULIC BRAKE



BEVEL MIXER DRIVE



SLEW DRIVE WITH HYDRAULIC BRAKE





Variable Speed Fluid Coupling



Geared Motor



Helical Gearbox



Cooling Tower Gearbox



PREMIUM

Premium Transmission Limited

Head Office : Premium House, Mumbai-Pune Road, Chinchwad, Pune - 411019, India.

Tel. : (91-20) 27488886 / 27488947, Fax : (91-20) 27450287 / 27472384

Website : www.premiumtransmission.com

Manufacturing Units : **Unit-I** : Old Mumbai - Pune Road, Chinchwad, Pune - 411 019, India. Tel. : 91-20- 66314100 Fax : 91-20- 27450287, 27472384. **Unit-II** : Falta Industrial Growth Centre, Sector-III, Falta, 24 Parganas (South), West Bengal 743504, India. Tel.: 91-3174-222231 / 32 / 33 / 37, Fax : 91-31749 222234. **Unit-III** : G-56 / 57, MIDC Industrial Area, Chilkalthana, Aurangabad - 431 210, India. Tel.: 91-240-2485521, 2485856, 2485056, Fax : 91-240-2485756. **Unit-IV** : 31-P, MIDC Industrial Area, Chilkalthana, Aurangabad - 431 210, India. Tel.: 91-240-2482858, 2471298, Fax : 91-240-2482857.

Regional Offices : **Mumbai** : Corporate Park II, 4th Floor, Sion, Trombay Road, Chembur, Mumbai - 400071, India. Tel.: 91-22-25264750, 25264763, Fax : 91-22-25262622, 25264800. **New Delhi** : Express Building Annexe, 9-10, Bahadur Shah Zafar Marg, New Delhi - 110 002, India. Tel. : 91-11-23730554 (8 Lines), Fax : 91-11-23359782 / 23357739. **Kolkata** : Thapar House, 25, Brabourne Road, Kolkata - 700 001, India. Tel.: 91-33-22424316, 22423780, 22423805, 22424317 / 20 / 21, 22438815, 22420817, Fax : 91-33-22424325. **Chennai** : "Wavoo Mansion", 7th Floor, New No. 48 (Old No. 39) Rajaji Salai, Chennai - 600 001, India. Tel.: 91-44-25255200, 91-44-25224557. **Nagpur** : Plot No 15, State Bank Colony, Ujjwal Nagar, Somalwada, Wardha Road, Nagpur - 25. Mobile : (0) 9425009827

Branch Offices : **Ahmedabad** : 'Jaldarshan' Ashram Road, Navrangpura, Ahmedabad - 380 009, India. Tel.: 91-79-26580428 / 0518 / 1856 / 1857 / 1861, Fax : 91-79-26587783. **Bangalore** : 16/3, Ali Asker Road, Off Cunningham Road, Bangalore - 560 052, India. Tel.: 91-80-22262062, Fax : 91-80-22253472. **Hyderabad** : 6-2-47, A, C. Guards, 1st Floor, Hyderabad - 500 004, India. Tel.: 91-40-23314025, 23316446, 23390544, Fax : 91-40-23318557. **Kochi** : 39/5567, M. G. Road, Emakulam, Kochi - 682 015, India. Tel.: 91-484-2359661, 2359372, 2359190, Fax : 91 484-2359589.

Representative Offices : **Lucknow** : G-901, Halwasiya Utsav Enclave, Opposite HAL, Faizabad Road, Lucknow - 226 016, India. Tel.: 91-522-4001344, Mobile : (0) 9793581144. **Mohali** : House No. 33, 1st Floor, Phase - XI, Sas Nagar (Mohali), Punjab - 160 062, Tel.: 91-172-2230633, Mobile : (0) 9814640863. **Jamshedpur** : Flat No. 61 A, First Floor, Rajendranagar Colony, Sakchi, Jamshedpur 831001, Jharkhand. Mobile : (0) 9771844408. **Rourkela** : A/72, Sector - 13, Rourkela - 769009. Orissa. Mobile : (0) 9437122066. **Jaipur** : B-1A, Vivekanand Colony, Naya Kheda Near Ambabari, Jaipur - 302012, Rajasthan. Mobile : (0) 9887720845. **Coimbatore** : Door no. 55, Rangamy Layout, Pellamedu, Coimbatore - 641004. Mobile : (0) 9894295769. **Baroda** : B 24, Deep Darshan 1 Society, Ataladra, Padra Road, Baroda, Gujarat. Mobile : (0) 9375122012. **Raipur** : A-10, Shubham Vihar, Behind Anmol Super Market, New Puraina, Mahavir Nagar, Raipur - 492 001 Chhatisgarh, Mobile : (0) 9826903132. **Indore** : C-6, Shreevardhan Complex, 4, RNT Marg., Indore - 452001. Ph : 0731-2510943. Mobile : (0) 9302690943. **Vishakhapatnam** : Flat No. 101, Yadu Residency, Rednum Garden, Ramnagar, Vishakhapatnam-530002, Mobile : (0) 9866167594.