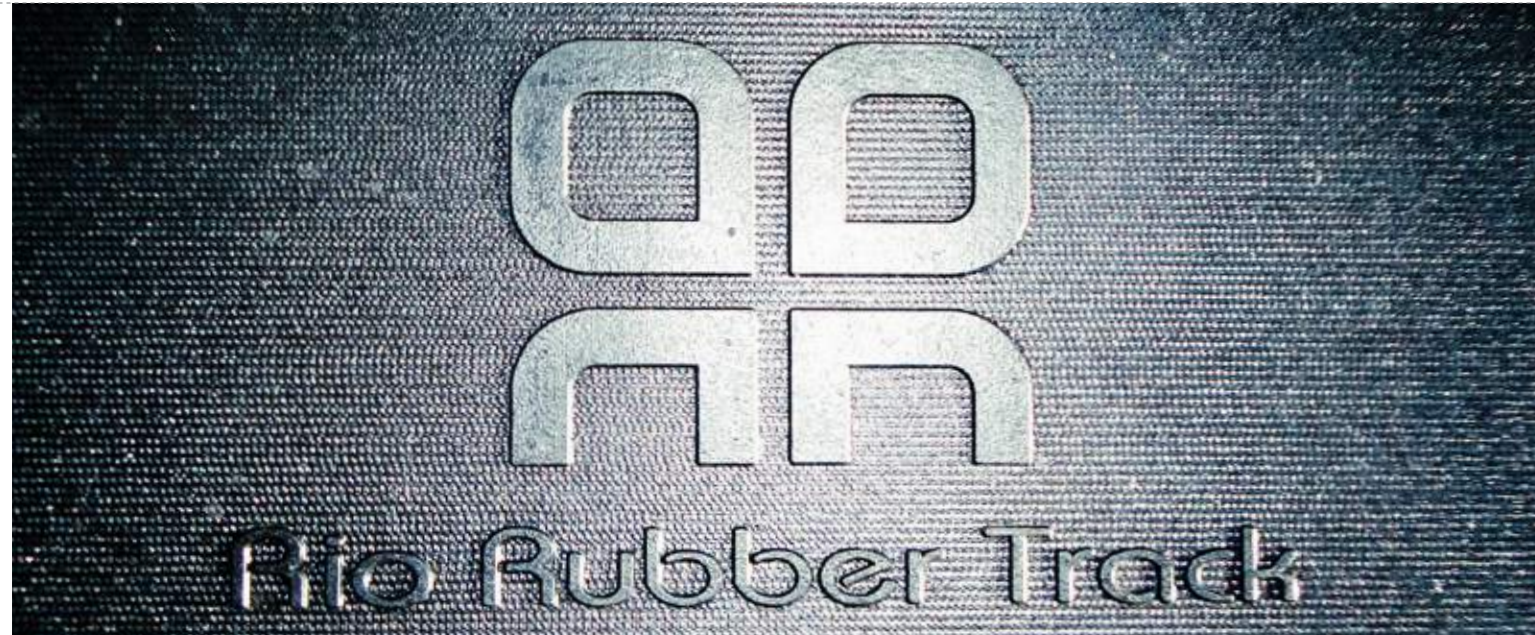


Our Products >>



Track Pads (p.3-6)

Asphalt Milling Machines | Asphalt & Concrete Pavers | Excavators | Bulldozers



Buffer Rubber (p.7-8)

Plate Compactors | Vibratory Pile Hammers | Asphalt Vibratory Rollers



Rubber Tracks (p.9-10)

Mini Excavators | Skid Steer Loaders



Solid Rubber Tires (p.11-12)

Skid Steer Loaders | Aerial Work Platforms



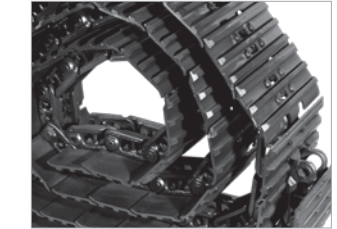
Asphalt Milling Teeth (p.11-12)

Asphalt Milling Machines | Asphalt Grinding Attachments



Undercarriage (p.13-16)

All Types of Crawler Equipments



Our Company

Rio Rubber Track, Inc. manufactures rubber undercarriage parts such as: track-pads, conveyor belts, vibration isolators, solid rubber tires, continuous rubber tracks, and carbide teeth for road milling & paving equipment, excavators, pile drivers, vibro-compactors, and compact track / wheel loaders.

Our main distribution facility in Temecula, California serves equipment requirements throughout North America and welcomes inquiries from OEMs, dealers, and equipment support groups. We are also a regular exhibitor at major American trade shows such as: **World of Asphalt**, **CONEXPO/CONAGG** and **Bauma Europe**.



Track Pads >>

Rio Track Pads are specially made of heavy-duty premium materials to increase undercarriage traction safety and performance standards of steel-tracked crawler equipment and protect sensitive foundations prone to damage by heavy equipment.

Applications:

- Excavators
- Trenchers
- Road Milling & Paving Equipment
- Customized General Construction Equipment Utilizing Steel-Tracks

Varieties:

- BTS** (Bolt-To-Shoe) Rio BTS track-pads bolt direct onto existing steel grouser shoes for maximum traction safety and load-bearing performance on severe incline-grade pavement and slippery foundation.
- BTC** (Bolt-To-Chain) Rio BTC track-pads bolt directly onto the undercarriage track-chain for standard load-bearing requirements
- CO** (Clip-On) Rio CO track-pads install using lateral fasteners onto existing steel grouser shoes. Great for light-duty, or temporary use.

Materials:

- **Heavy-Duty Premium Rubber** – Maximizes undercarriage traction, machine vibration absorption, and protects equipment operators against accidental electrical grounding on live-utility worksites.
- **Polyurethane** - For standard undercarriage traction requirements.



Brand Model

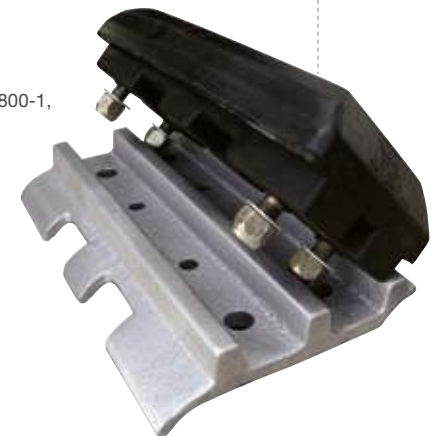
BART MILL	BT300
BITELLI	SF102C/SF150, SF210, SF200L, SF202, SF250
CAT	PM465, PR450, PR500, PR650, PM102, PM200, PM201, PM565, SF350
CMI /TEREX	PS250, PR450, PR500, PR600, PR525, PR525-7, PR-800-7, PR860, PR950, PR-1050
DYNAPAC	PL2000S, PL2100S
I-R, VOLVO	MT6520, MT2000, MT7000, MT7500, PRO-CUT 2200
BOMAG / MARINI	BM1000, BM1200, BM1300, BM2000/50, MP1000, MP1300, MP2000, BM2000/60, MP2100
ROADTEC	RX25, RX30, RX25D, RX40, RX45, RX45B, RX50, RX50B, RX50A, RX60, RX60B, RX68, RX68B, RX70, RX70B, RX110, RX400, RX500, RX700, RX900
WIRTGEN	W100F, W120F, W130F, W150, W200, W210, W250, W1000F, W1200F/FT, W1200L, W1300, W1500, W1900, W2000, W2000DC, 2000VC, W2100VCL, 2100DCL, W2100, 2100VC, 2100DC, 2100DCR, W2200

Brand Model

ABG	Titan 111,125, 223, 225, 311, 323, 325, 326, 411, 423, 511, 6820, 8820
BARBER GREENE	SA41, SA145, SA150 BG220, 225B, 225C, BG245, 245B, 245C, BG265
BITELLI	PM465, PR450, PR500, PR650, PM102, PM200, PM201, PM565, SF350
BLAWKNOX/I-R	PF400A/400, PF410, PF410A, PF451, PF500/510, PF5500, PF9500, HP9500, Neal 5500, PF855, 545, M450, DM5500, DM3000, Neal 5500, PF3120/3020
BOMAG	813RT, 814, 815
CAT	AP650B, AP1050, 1050B
CMI	SF-3002, SF350, SF450, TR300, SF-2204 HVW, SF-2324 HVW, SF-2284 HVW, SF-6004, PS-3502 CR351/361/362 S,
CEDARAPIDS	CR451/461/462 S, CR551/561/ 562S, CR541, BSF-2H/BSF4/FSF520
SVEDALA-DEMAG	DF100, DF110, DF130C, DF130CS, DF135C, DF135CS, DF140C, DF141CS, DF145CS
DYNAPAC	F121C, F141C, F141CR, F151C, F181C, F182CS, F30CE
GILCREST	PROPAVER 813
GOMACO	TC600, GP2000, GP2500, GP2600, GP2800, GP4000, 9500, COMMANDER2/3, GT3200, GT3300, GT3600, GT6000, GT6300, PS-48, PS-60
GUNTERT-ZIMMERMAN	S100, S850, S1500
INGERSOLL-RAND	450, 550P, 575T, 635, 650P, 650D, 650, / 350P,750P,780T,880T, ECM370, 470, 580, 590
LEE BOY	8000D, 8500, 8500LD Elite2, 8515, 8516
MARINI	MF704, MF904, MF905, MF1005, MF1007
MAULDIN	550, 690, 1500, 1720, 1750, 6907
MILLER FORMLESS	M7560, M8100
POWER CURBER	PC5500-B, PC5700, PC5700-B, PC8700
ROADTEC	PR135, PR185, PR235
TESMEC (Trencher)	TRS900, TRS700B, TRS1000, TRS1075, 1085, 1100
TRENCOR (Trencher)	760HD, 960HD, 1260HD
VERMEER (Trencher)	TC800, 850
WIRTGEN	SP500, SP850, TCM85, SP1600
VOGELE	SUPER 1400, SUPER1500, 1600, 1600-1, 1700, 1800, 1800DE, 1800SF, SUPER 1800-1, 1900, 2000, 2100, MT1000-1, 2500, SUPER 2500

Excavators

Rio Track Pads are available in sizes to fit all major-brand excavators including: AIRMAN, BOBCAT, CASE, CAT, DAEWOO, GEHL, GRADALL, HITACHI, HYUNDAI, IHI, JCB, JOHN DEERE, KOBELCO, LIEBHERR, LINK-BELT, NEW HOLLAND, TAKEUCHI, TEREX, VOLVO, YANMAR, and many more . . .



Buffer Rubber >>

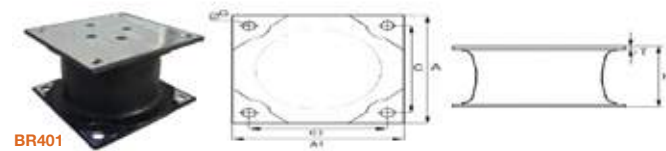
RioBuffer™ Rubbers are high-temperature vulcanized vibration isolators specially made for the extreme performance requirements of heavy vibratory-type construction equipment.

Applications:

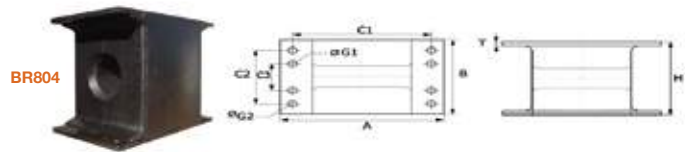
- Asphalt Pavement Compactors
- Plate Compactor Attachments
- Deep Foundation Pile Drivers / Extractors
- Custom-Engineered Equipment

Materials:

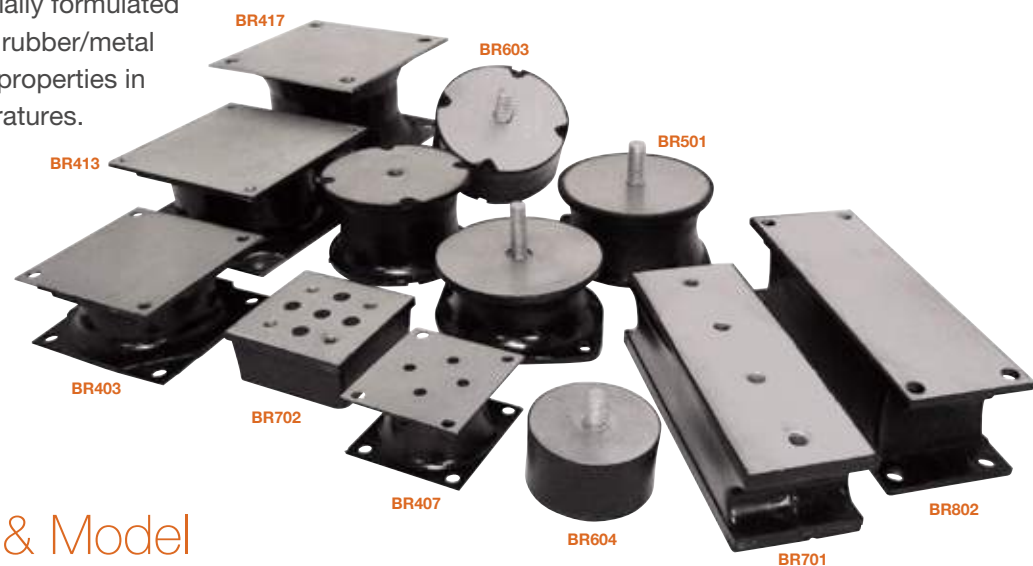
- Premium Rubber – Specially formulated to resist tearing, maintain rubber/metal bonding and elastomeric properties in extreme operating temperatures.



BR401



BR804



BR417

BR603

BR501

BR413

BR403

BR702

BR407

BR604

BR701

BR802

Find Your Brand & Model

Rio# BR403 (180 x 180 x 76mm)	
Maker (Brand)	Model No.
DYNAPAC	CA15/25/30/35/41D/152/250D/251/262, CC20/21/30/41/50/142
I-R	DD24/32/65/70/90/110, SD40/70D/100/130/150

Rio# BR407 (112 x 122 x 60mm)	
Maker (Brand)	Model No.
DYNAPAC	CC10/82/92/100/101/102/103/105/121/122/123

Rio# BR501 (236 x 170 x 90mm)	
Maker (Brand)	Model No.
BOMAG	BW177/212/213/214/216/219/225

Rio# BR502 (202 x 160 x 70mm)	
Maker (Brand)	Model No.
I-R	SD100C, SD100D, SD200, DD118
VIBROMAX	552/602/752/1102/1302/1802/46D/66D/116D/146D/166D/186D

Rio# BR603 (160 x 75mm)	
Maker (Brand)	Model No.
BOMAG	BW141/151/154/161/174/180/202/203/212/213/214/216/217/226

Rio# BR604 (105 x 55mm)	
Maker (Brand)	Model No.
BOMAG	BW100/120/123A/130

Rio# BR701 (300 x 102 x 80mm)	
Maker (Brand)	Model No.
BOMAG	BW212/213/214/216/217/219/226

Rio# BR702 (130 x 130 x 76mm)	
Maker (Brand)	Model No.
DYNAPAC	CA15, CA25, CK15, CK42

Rio# BR802 (326 x 113 x 94mm)	
Maker (Brand)	Model No.
BOMAG	BW212D-3, BW213D-3, BW214D-3, BW216D-3, BW219DH-3

Rio# BR1605 (165 x 102mm)	
Maker (Brand)	Model No.
CAT	573, 683E, CB334D, CB634D

Find Your Brand & Model

Rio# BR401 (180 x 180 x 100mm)	
Maker (Brand)	Model No.
ALLIED	8700, C/9700/100
HMC/MOVAX	SP50
HUDCO	HC20
ICE	18RF, 216, 416L, 625B, 625SH
KENT	KHP65, 135
MKT	V2-B
NPK	C4C
STANLEY	HS-6000, HS-8000, HS11000

Rio# BR417 (240 x 240 x 140mm)	
Maker (Brand)	Model No.
ALLIED	2300/9800/9801
CAT	HD6
HPSI	1600
ICE	44 Series, 416, 2-C
INGERSOLL-RAND	DD145
MKT	V-5C/8 pcs, V20B/16 pcs, V30/20pcs
MGF	RBH450
NPK	C8C

Rio# BR408 (240 x 240 x 142mm)	
Maker (Brand)	Model No.
ICE(DUTCH)	MODEL 50-100, 55NF, 4450, ICE416

Rio# BR409 (150 x 150 x 80mm)	
Maker (Brand)	Model No.
VIB.PILE HAMMER	LHV-04

Rio# BR410 (180 x 180 x 90mm)	
Maker (Brand)	Model No.
HMC/MOVAX	SP50
CAT	HD4

Rio# BR413 (220 x 220 x 101mm)	
Maker (Brand)	Model No.
ALLIED	1600/9700
KENT	KHP210
HUDCO	HC30
NPK	C6C
TEMPO	RS166A

Rio# BR416 (130 x 130 x 80mm)	
Maker (Brand)	Model No.
INDECO	AD1-5

Rio# BR418 (230 x 230 x 105mm)	
Maker (Brand)	Model No.
INDECO	AD8-16, AD14-30

Rio# BR804 (485 x 300 x 350mm)	
Maker (Brand)	Model No.
APE, ICE	55NF, 416, 420, 423, 815, 817, 1412

Rubber Tracks >>



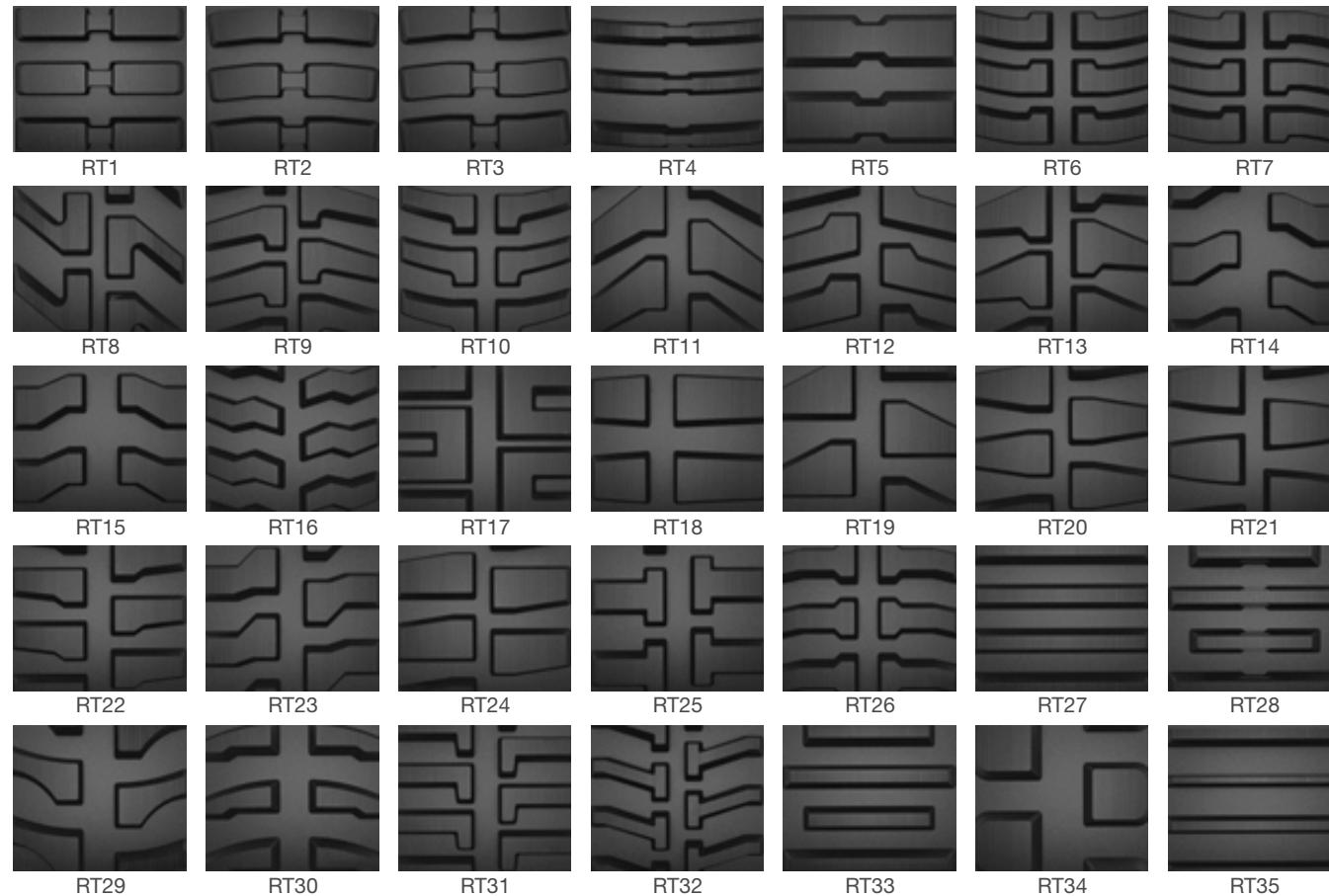
RioTrack™ are specially made according to strict ISO quality processing standards with superior materials and internal structural components. When demanding contractors meet severe work environments, they need maximum safety, durability, and performance from their compact crawler equipment. - They get **Rio Rubber Tracks**.

Applications:

- Compact Track Loaders
- Compact Excavators
- Agricultural Equipment
- Custom Engineered Construction Equipment

Materials / Design

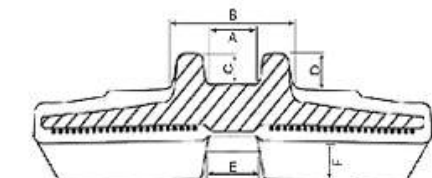
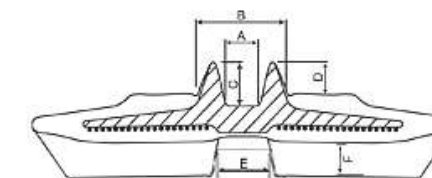
- Joint-Less Internal Steel Cord Technology
- 5-ply symmetrically wound heavy-duty steel cable braiding
- Integrated Single-Molded Tread Bars
- Integrated Single-Molded Guide Lugs
- Available in a wide variety of sizes and tread-patterns.



RioTrack™- Premium Rubber Tracks are available in a variety of widths and tread patterns to suit your current and upcoming project needs.

Size	Data						Steel Bar Data		Pattern
	A	B	C	D	E	F	Inner Orbit	Outer Orbit	
280*72	25	75	30	26	27	19	26	76	RT1
450*84	43	98	46	32	56	31	45	97	RT1
450*100	43	105	50	43	47	27	48	99	RT1/34/17
350*107K									RT2
400*107K	38	95	29	28	43	24	40	84	RT2
320*86	30	84	28	28	38	25			RT3
500*92	48	130	28	28	43	35	52	126	RT3
320*90	36	95	48	43	40	26	36	93	RT4
500*90	46	100	52	35	43	31	50	103	RT4
400*90	22	80	32		32	32	24	70	RT5
400*90A							37	92	RT5
300*109K	28	86	26	29	32	24	28	81	RT6
400*142	30	92	36	30	42	30	30	83	RT6
450*163	40	120	26	28	42	28	28	81	RT6
260*109	31	88	26	29	35	16	32	69	RT6
250*96	26	68	20	18	27	22	29	65	RT7
300*109B	36	94	26	29	40	20	41	84	RT7
420*100	50	98	51	37	46	24	52	102	RT7
320*54	28	83	23	21	37	13	32	78	RT8
160*60	17	66	25	24	18	13	19	57	RT9
170*60	22	66	26	26	27	14			RT9
180*60A	25	61	28	27	25	13	28	60	RT9
190*72							25	66	RT9
250*52.5	25	84	23	23	30	23			RT9
260*96	27	85	23	24	31	21	29	69	RT9
300*52.5K	32	83	27	26	32	21	31	82	RT9
350*52.5	38	92	24	20	40	29	42	88	RT9
230*72	25	80	28	28	23	19	27	73	RT10
250*72	24	82	30	26	32	22	26	76	RT10
180*72	25	69	28	30	24	17	27	67	RT11
300*52.5A	28	84	24	17	37	14	32	78	RT11
450*81W	61	138	31	33	66	27	59	126	RT11
450*83.5K	42	114	26	27	40	28	44	110	RT11
450*86	45	98	48	35	40	27	50	100	RT11
300*53	31	88	25	20	43	23	33	84	RT12
300*55	30	84	26	28	37	17	31	77	RT12
450*76	48	122	30	30	55	29	51	118	RT12
400*72.5N	40	99	27	25	42	25	40	91	RT13
250*47	25	68	22	20	23	22	25	65	RT14
180*60	24	64	27	27	23	11	22	63	RT16

Size	Data						Steel Bar Data		Pattern
	A	B	C	D	E	F	Inner Orbit	Outer Orbit	
180*60	35	87	41	26	46	26	40	80	RT17
230*48K							26	64	RT18
300*55.5	28	86	23	27	32	19	37	78	RT18
350*75.5	36	98	24	24	53	24	40	86	RT18
400*75.5	38	101	24	26	43	27	41	98	RT18
450*83.5	42	112	25	27	42	30	43	111	RT18
150*72	22	68	23	25	23	16	26	62	RT19
200*72	26	80	28	30	27	14	27	74	RT19
230*48	24	74	24	26	27	21	26	68	RT19
280*106	30	80	28	28	30	24	32	75	RT19
320*106	30	84	28	28	32	28	33	79	RT19
400*72.5R	50	100	29	24	35	27	54	114	RT19
250*48.5	23	66	21	18	23	18	23	65	RT20
300*52.5B	42	96	22	24	49	20	45	90	RT20
450*71	43	116	29	21	46	33	44	105	RT20
450*73.5	42	125	30	32	38	30	44	110	RT20
450*81N	42	118	26	23	45	28	43	112	RT20
400*72.5W	50	111	27	25	56	24	52	106	RT21
485*92	68	136	34	33	54	30	67	137	RT21
350*56	40	92	27	20	28	25	44	86	RT22
350*56R	40	92	27	25	28	25	40	86	RT22
400*72.5Y	30	86	30	25	40	25	31	81	RT22
400*72.5K	38	95	29	27	50	26	40	90	RT22
180*72K	23	65	22	19	30	19	24	62	RT23
180*72K	22	70	29	29	32	16	24	66	RT23
350*109	40	100	22	27	32	24	42	89	RT24
300*109A	27	80	28	28	29	20	31	78	RT25
350*54.5	39	92	24	23	53	22	42	89	RT25
230*101	23	82	22	3	27	20	29	76	RT26
320*100	24	76	33	28	36	23	42	89	RT26
600*100	48	110	63	54			48	110	RT27
700*100	47	125	73	61	58	46	50	124	RT27
750*150	63	170	90	62	40	68	70		RT27
800*125	66	176	96	84	73	37	68		RT27
800*150	64	172	98	75					RT27
200*72K	22	68	29	29	36	15	24	66	RT30
230*96	27	74	23	21	28	18			RT32
320*84	43	102	46	30	48	22	46	100	RT34
370*109	38	92	27	26	32	25	40	85	RT35



Solid Rubber Tires

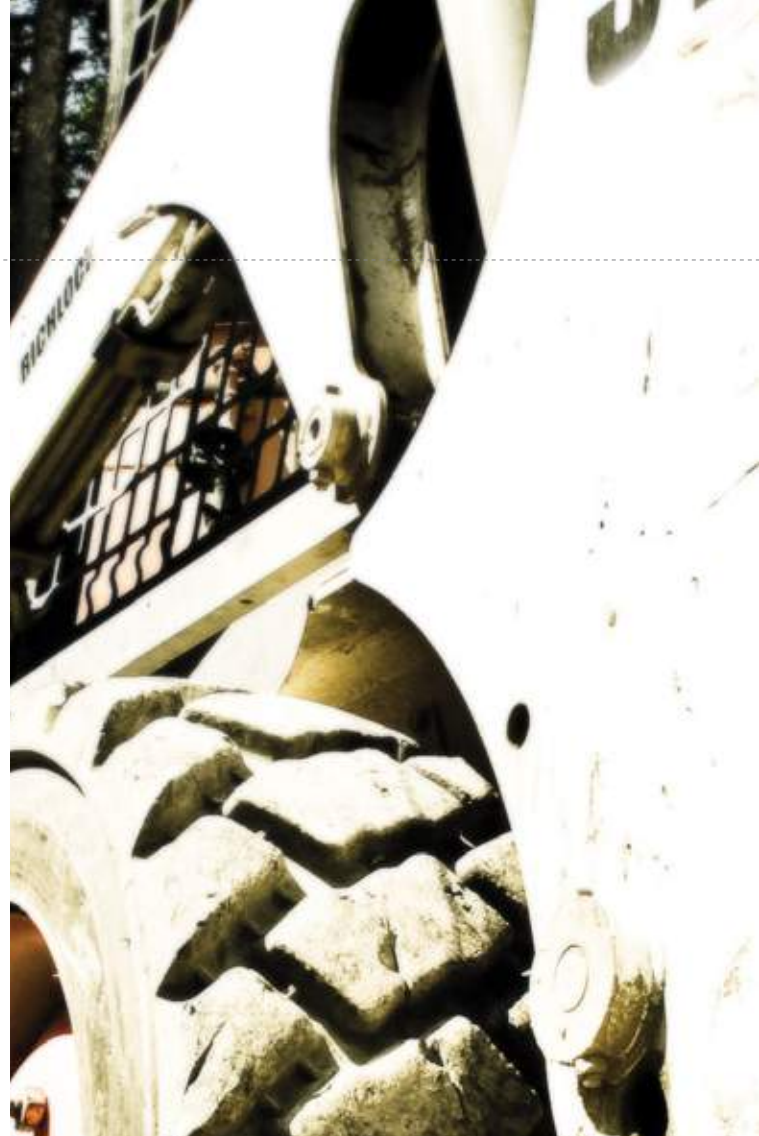
Rio Solid Rubber Tires are specially made with flame-resistant premium rubber compounds for work in all areas where maximum safety and durability is critical. – Perfect for hazardous environments where contractors are likely to encounter open-flames, sharp objects, and uneven terrain such as demolition / disaster recovery sites, and metal / waste recycling plants.

Applications:

- Compact Skid-Steer Loaders
- Material Handlers
- Custom Engineered Construction Equipment

Materials / Design:

- Premium Fire-Resistant Rubber – Specialized compound resists ignition in high temperatures while maintaining maximum structural integrity and load-bearing strength.
- Superior cutting and chunking resistance.
- 40% increased load capacity over pneumatic tires.
- Enhances equipment steadiness and steering control.
- 45-degree lateral edge buffer slope prevents dislocation.
- Connective Tread Design - Prevents crows-hop and pattern abrasion. Also available in non-directional tread patterns and built-in wheels.



Conveyor Belts

Rio Conveyor Belts are specially made with superior materials and internal design structure to outperform standard belts in high-production pavement reclamation equipment.

Applications:

- Heavy Highway Cold-Milling Planers
- Aggregate Material Reclaimers
- Custom Engineered Construction Equipment

Materials / Design:

- Premium Vulcanized Rubber – Superior Flexibility for High Material Removal Rates
- Cut / Abrasion Resistant Outer Layers – Supports Coarse-Grade Materials
- Tear-Resistant Internal Textile Layers – Superior Material Weight Support
- Single-Process Manufacturing – 100% Cleat / Belt Integrity

Asphalt Milling Teeth

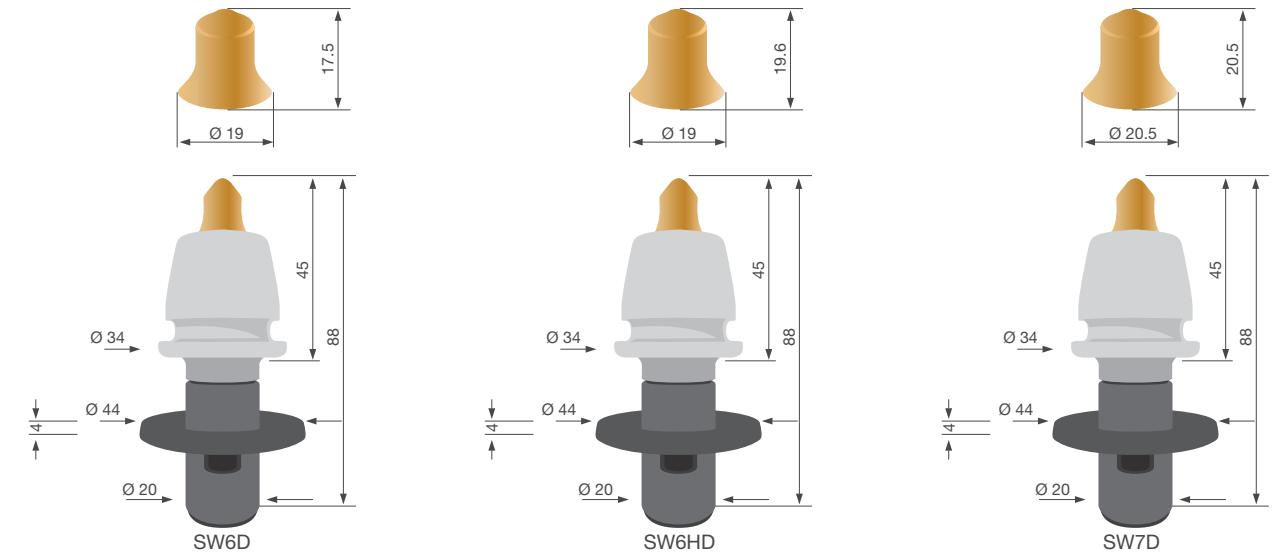
Rio Carbide Milling Teeth are specially made with superior materials and structurally designed to last longer and increase material removal rates on heavy highway pavement and base-foundation reclamation equipment.

Applications:

- Heavy Highway Cold-Milling Planers
- Compact Milling-Head Attachments
- Material Crushers & Pulverizers
- Custom Engineered Material Processing Equipment
- Asphalt, Concrete, and Stone Reclamation

Materials / Design:

- Premium Tungsten Carbide Tip - High Impact Resistant
- Fortified Tip-to-Body Brazement - 100% Structural Wear-Life Integrity
- Heat-Treated Hardened Upper Body Superstructure – Full Body/Tip Wear-Life Utilization
- Heat-Treated Hardened Retainer Ring – Full Wear-Life Tool Holder Protection
- Reinforced Spring-Clip – Full Wear-Life Tool



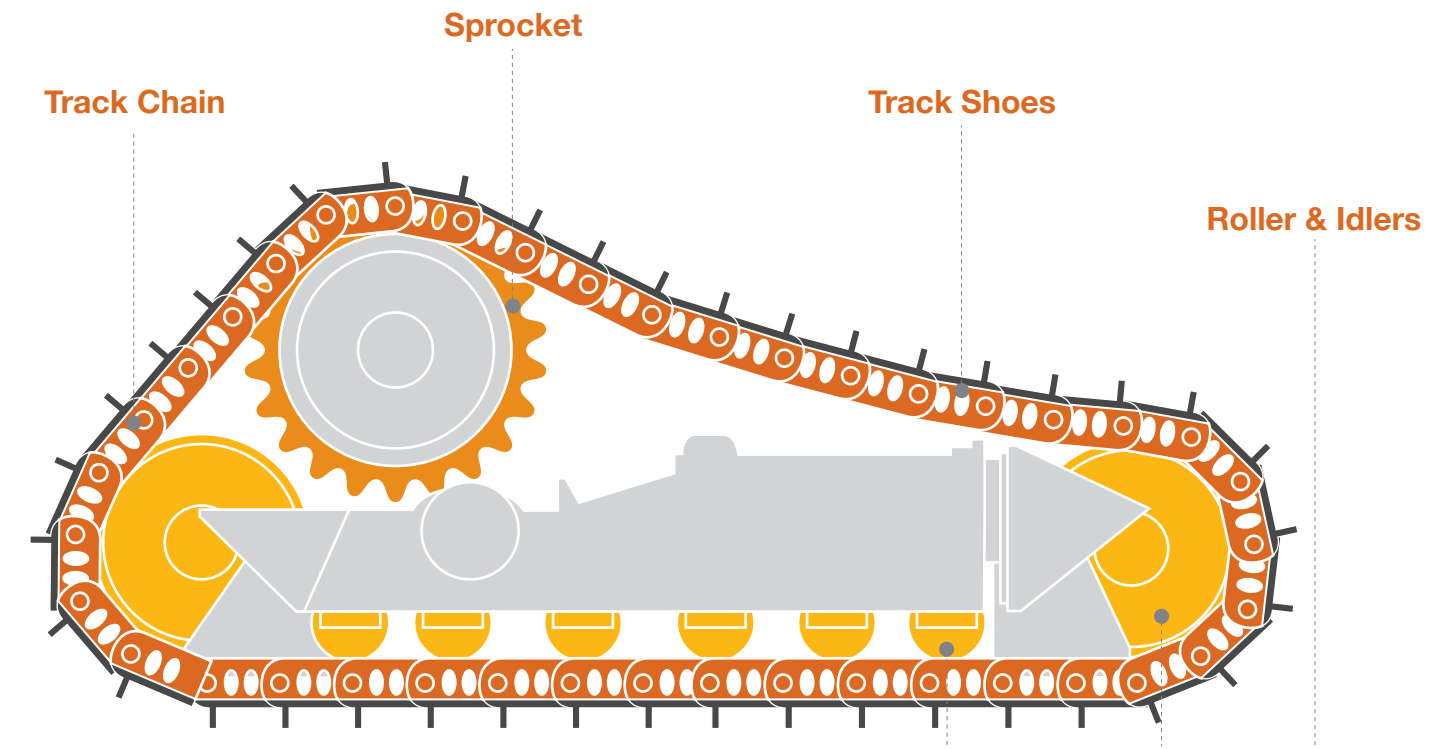
Undercarriage >>

Rio wear-parts for major-brand construction equipment

- Excavators
- Dozers
- Pavers
- Asphalt Milling Machines
- Skid-Steer Loaders

Ask about our new undercarriage parts for heavy crawler equipment:

- Chains New!
- Sprockets New!
- Rollers New!
- Idlers New!
- Track Pads
- Track Shoes



Individual Track-Chains

Rio Individual Track Chains are quality tested to OEM standards for reliability and performance, and are available in a wide variety of chain-link pitch specifications from 90mm to 350mm to suit almost any type of crawler equipment including excavators, loaders, pavement cold-milling planers & pavers, trenchers and customized construction equipment.

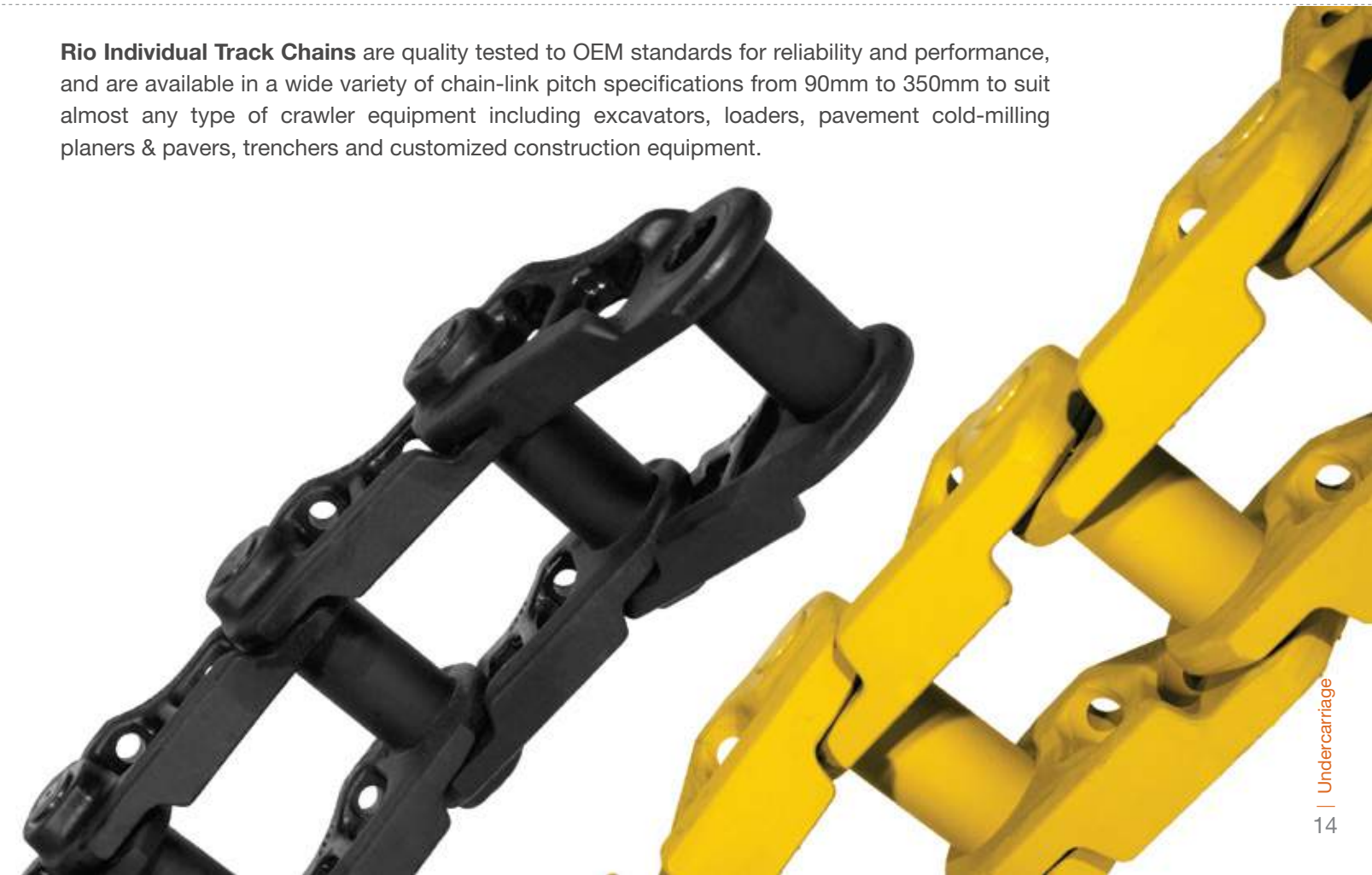
Steel-Track Undercarriage Components – New!

Rio Rubber Track supplies whole steel track-chain assemblies and individual undercarriage components in sizes and specifications for most major-brand crawler equipment.

Whole Steel Track Undercarriage Assemblies

Designed to meet OEM technical requirements of specific machine classes come complete with:

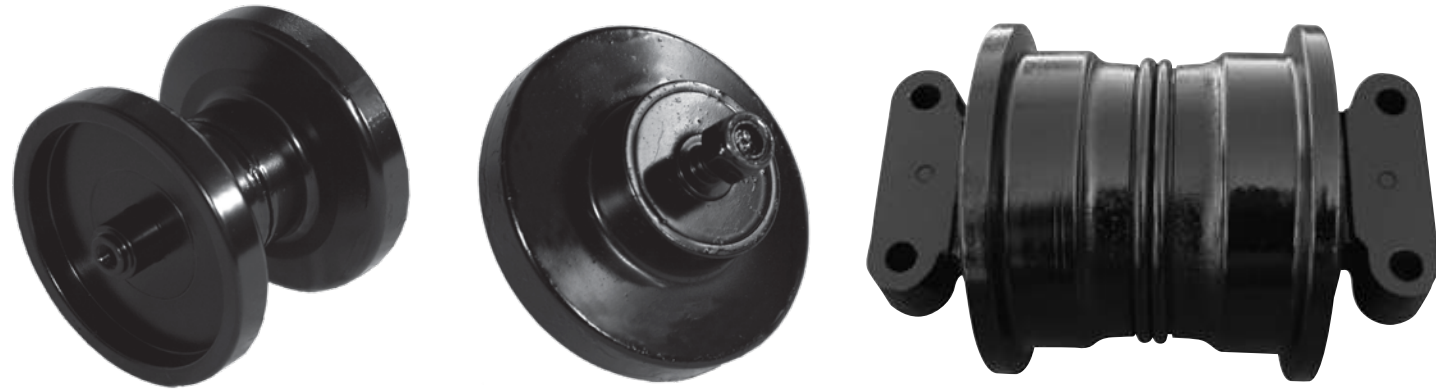
- Track rollers for high-speed / high-load applications.
- Carrier-roller or slide-bar configuration.
- Short tensioning systems for maximum tension rates in restricted spaces.
- A wide range of hydraulic final drives is also available.
- Rio premium rubber track-pads available for road milling, paving, and excavating environments.





Track Rollers & Carrier Rollers

Rio Track Rollers are quality tested for durability to support OEM equipment weight standards up to 800-tons, and are available in single, and double-flange types for a wide variety of road-construction, earth-moving, mining, and forestry equipment.



Track Shoes

Rio Track Shoes are available in a wide variety of lengths for chain-link pitch specifications up to 300mm, and are specially made to OEM equipment weight distribution and fatigue standards for almost all types of crawler equipment.



Sprockets

Rio Sprockets are specially made of wear-resistant heat-treated steel to meet performance standards of OEM crawler equipment in weight classes up to 100-Tons.



Idlers & Tensioners

Rio Idlers & Tensioners are made to meet pretension ratios standards of OEM equipment weight classes up to 500-Tons and are made of heat-treated materials for optimum performance and wear-life.

