

## Preparing for NAPLEX with RxPrep

Page 1: Getting Started

Pages 1-3: How to Study Using RxPrep Materials

Pages 4-6: Creating Your Customized Study Schedule

Page 7: When Are You Ready To Test?

### Getting Started:

- Read the Exam Overview chapter in the RxPrep Course Book and watch the video lecture if you have access.
- Complete the Basic Math and Top Sellers free assessments. If you score < 100%, consider starting with the pharmacy basics course before proceeding and/or studying the Calculations I chapter and Top Seller Appendix.

### How to Study Using RxPrep Materials:

- Refer to the flow diagrams on pages 2-3 for instructions on how to progress through calculations and clinical chapters.
- For calculations chapters:
  - First complete all problems in the Course Book to master the most common types of problems. This may take several days.
  - Then proceed to test banks. When test bank questions are missed/marked incorrect, review the appropriate section of the chapter, practicing the example problems. Then, repeat the test banks as described.
- For clinical chapters, complete the Basic test banks and use the notecard method shown below. Some chapters have a Supplemental test bank for additional practice; these are optional.

#### TO MAKE AN INDEX CARD FOR A MISSED QUESTION

Write the missed question on the front of a 3x5 index card. Write the answer on the back. Include the explanation if you do not know it.

#### **Don't skip this step:**

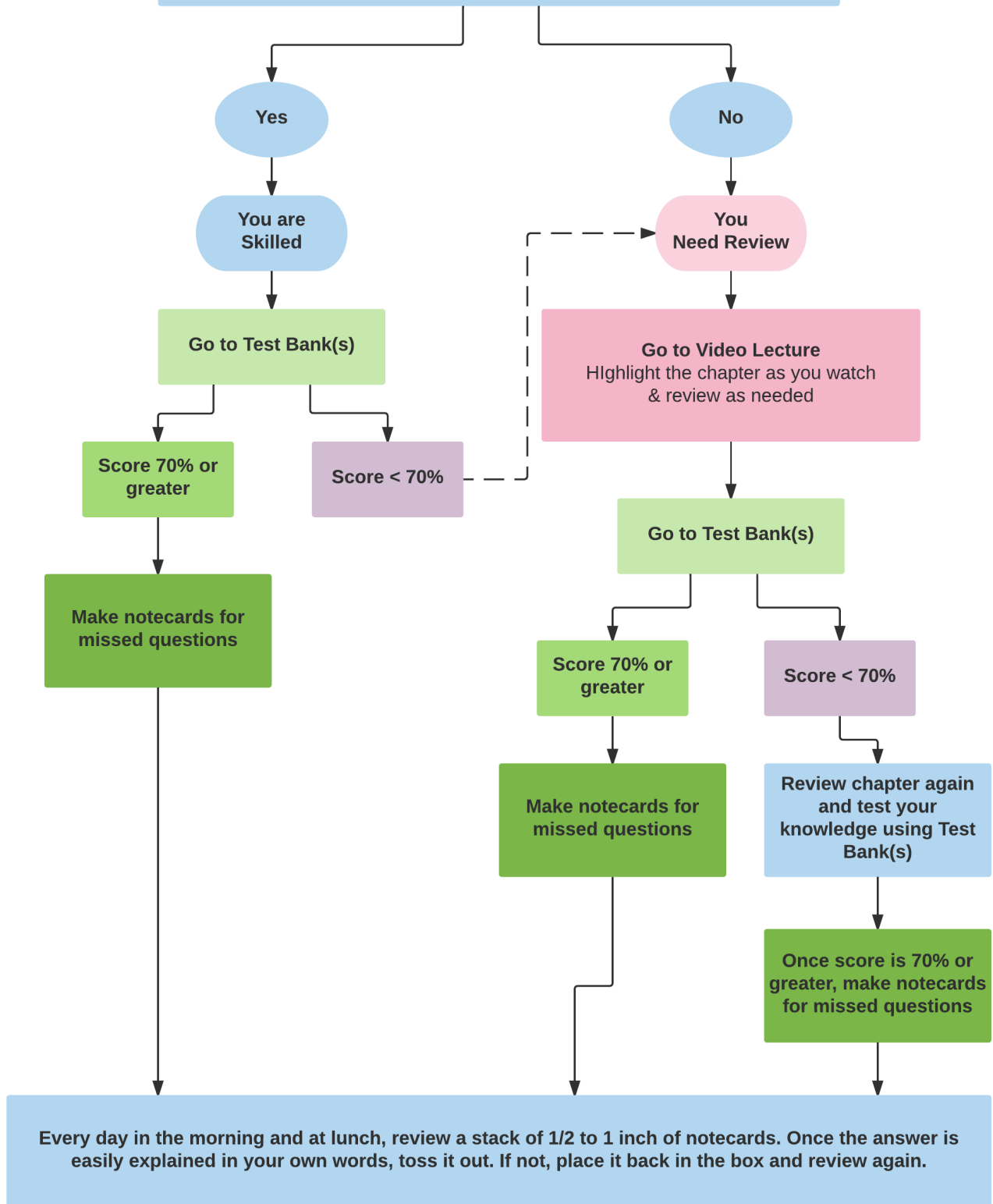
Explain aloud to someone you care about why the answer is correct, in your own words. The person does not have to be present. Saying it out loud will force you to use your own words and will help you understand the response. In turn, this will help you respond correctly to exam questions. For patient counseling, pretend to explain to your mom or another relative. For pharmacist information, pretend to explain to another pharmacist, such as a classmate.

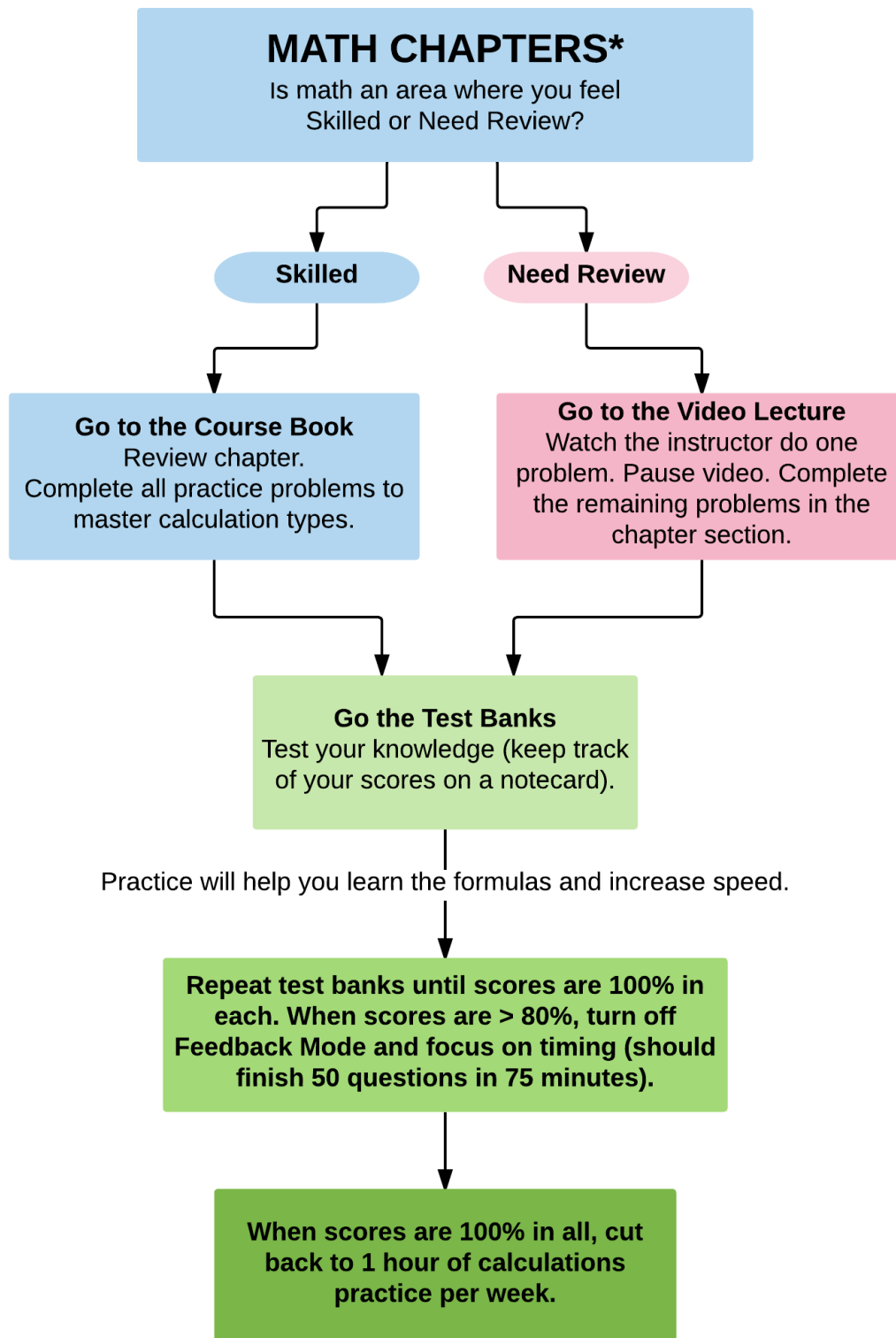
**When you are done with the explanation, place the card in a shoebox or something similar.**

**Alternate testing yourself with the cards and studying new material. See the Study Schedule for more information.**

# CLINICAL CHAPTERS

Determine for each chapter whether this is an area where you are Skilled or where you Need Review.  
How? Review underlined information in the chapter.  
Do you know most of the underlined information well?





\*This includes Calculations, Biostatistics, and Pharmacokinetics

## Creating Your Customized Study Schedule

- If you already have a test date (or target test date), mark it on the calendar. Count how many days are available between now and the test date.
- Mark a date 2 weeks before your test date and write “RXPREP PRACTICE EXAM” on that date. This is the day you should plan to take the RxPrep Practice Exam (a NAPLEX-Style exam) which will assess your readiness to test (target score > 80%).
- Go through each day of your calendar and block out time slots on each day for RxPrep NAPLEX studying.
- Once you have determined the total number of hours available, assign hours to each topic (see estimates below). It is recommended that non-calculations/clinical topics alternate with calculations topics (take 60% of the hours and assign them to non-calculations/clinical topics to coincide with NAPLEX Competency Statement breakdown).
  - Example: You estimate 2 hrs of study per weekday and 8 hours per weekend between now and May 19<sup>th</sup> (2 weeks before your target test date): total number of hours available = 216 hours.
  - Dedicate ~130 hrs (60% of 216) for non-calculations/clinical topics; this is approximately 1.8 hours per topic if divided evenly, however some topics may be quicker than others (see estimates below). Order of topics is not critical. Schedule topics to match APPEs or alternate between topics that are harder and easier for you (to stay motivated).

### Time Dedicated to Non-Calculations/Clinical Topics

Use this guide when selecting topics and assigning them to your study calendar. The completion times are general estimates based on the number of pages in the chapter and the number of questions in the test bank(s) associated with the chapter. It does not account for time needed to make notecards. Hours assigned can be adjusted according to your baseline knowledge of the topic area and the total number of study hours available prior to testing. Assign all topics to your study schedule.

Completion time: 0.5-1.5 hours	Completion time: 1.5-3 hours	Completion time: > 3 hours
Handling hazardous drugs Drug allergies & adverse drug reactions Pharmacogenomics Drug mechanisms, classes & structures Drug formulations Drug references Interpreting questions from patient cases IV drug compatibility, administration & degradation Emergency preparedness, toxicology & antidotes Drug use in pregnancy & lactation Pediatric conditions Travelers Infectious diseases IV Pulmonary arterial hypertension Allergic rhinitis, cough & cold Chronic obstructive pulmonary disease Tobacco cessation Cystic fibrosis Thyroid disorders Migraine Gout Ischemic heart disease Anemia Sickle cell disease Bipolar disorder Parkinson disease Alzheimer’s disease Anxiety disorders Stroke Constipation & diarrhea Sexual dysfunction Benign prostatic hypertrophy Overactive bladder Glaucoma, ophthalmics & otics Motion sickness Weight loss	Non-sterile compounding Sterile compounding Medication safety & quality improvement Pharmacokinetics Drug interactions Dietary supplements, natural & complementary medicine Lab values & drug monitoring Critical care & fluids/electrolytes Immunizations Renal disease Hepatitis & liver disease Infectious diseases II Infectious diseases III Asthma Transplant Contraception & infertility Hypertension Acute coronary syndromes Chronic heart failure Arrhythmias Depression Schizophrenia/psychosis Attention deficit hyperactivity disorder GERD & PUD Inflammatory bowel disease	Biostatistics & pharmacoeconomics Infectious diseases I Human immunodeficiency virus Diabetes Systemic steroids & autoimmune conditions Osteoporosis, menopause & testosterone use Pain Dyslipidemia Anticoagulation Oncology I and II Epilepsy/seizures Common skin conditions

## RxPrep Sample NAPLEX Study Schedule: FOR THOSE ON APPE ROTATIONS CONCURRENTLY

### Monday

	ACTIVITY	NOTES
8-5pm	APPE	Review notecards on lunch & breaks.
5-6pm	Dinner/Commute	
6-7pm	APPE Assignments	
7-7:15pm	Break	
7:15-8:15pm	Clinical Topic	Critical Care (chapter +/- video)
8:15-8:30pm	Break	
8:30-9:30pm	Calculations	Pick up where you left off
9:30-10pm	Review Notecards	
10-10:15pm	Review calendar for tomorrow. Make to-do list.	

### Tuesday

	ACTIVITY	NOTES
	APPE	Review notecards on lunch & breaks.
	Dinner/Commute	
	APPE Assignments	
	Break	
	Clinical Topic	Critical Care (test bank)
	Break	
	Calculations	Pick up where you left off
	Review Notecards	
	Review calendar for tomorrow. Make to-do list.	

### Wednesday

	ACTIVITY	NOTES
8-5pm	APPE	Review notecards on lunch & breaks.
5-6pm	Dinner/Commute	
6-7pm	APPE Assignments	
7-7:15pm	Break	
7:15-8:15pm	Clinical Topic	Drug Allergies (chapter, video & test bank)
8:15-8:30pm	Break	
8:30-9:30pm	Calculations	Pick up where you left off
9:30-10pm	Review Notecards	
10-10:15pm	Review calendar for tomorrow. Make to-do list.	

### Thursday

	ACTIVITY	NOTES
	APPE	Review notecards on lunch & breaks.
	Dinner/Commute	
	APPE Assignments	
	Break	
	Clinical Topic	Hepatitis (chapter +/- video)
	Break	
	Calculations	Pick up where you left off
	Review Notecards	
	Review calendar for tomorrow. Make to-do list.	

### Friday

	ACTIVITY	NOTES
8-5pm	APPE	Review notecards on lunch & breaks.
5-6pm	Dinner/Commute	
6-7pm	APPE Assignments	
7-7:15pm	Break	
7:15-8:15pm	Clinical Topic	Hepatitis (test bank)
8:15-8:30pm	Break	
8:30-9:30pm	Calculations	Pick up where you left off
9:30-10pm	Review Notecards	
10-10:15pm	Review calendar for tomorrow. Make to-do list.	

### Saturday/Sunday

ACTIVITY	NOTES
Use 8-hr study schedule (from Full-Time Study Schedule) for Saturday and/or Sunday. Weekend can be used to catch up on topics that take longer than you expected or to cover additional topics.	

Chapter = read chapter and study content (learn bolded drugs and underlined content first) +/- video as needed or desired.  
 Test bank = complete test bank and make notecards for missed questions.

## RxPrep Sample NAPLEX Study Schedule: FOR FULL-TIME STUDY (8 HRS/DAY)

### Monday

	ACTIVITY	NOTES
8-9am	Clinical Topic	Infectious Diseases I (chapter +/- video)
9-9:15am	Break	
9:15-10:15am	Calculations	Pick up where you left off
10:15-11am	Break	
11-12pm	Clinical Topic	Infectious Diseases I (chapter +/- video)
12-1pm	Lunch	
1-2pm	Calculations	Pick up where you left off
2-2:15pm	Break	
2:15-3:15pm	Clinical Topic	Infectious Diseases I (test bank)
3:15-3:30pm	Break	
3:30-4:30pm	Calculations	Pick up where you left off
4:30-7pm	Dinner/Free Time	
7-8pm	Clinical Topic	Infectious Diseases I (test bank)
8-8:15pm	Break	
8:15-9:15pm	Review Notecards	
9:15-9:30pm	Review calendar for tomorrow. Make to-do list.	

### Tuesday

	ACTIVITY	NOTES
	Clinical Topic	Asthma (chapter +/- video)
	Break	
	Calculations	Pick up where you left off
	Break	
	Clinical Topic	Asthma (test bank)
	Lunch	
	Calculations	Pick up where you left off
	Break	
	Clinical Topic	Asthma (test bank) / Stroke (all)
	Break	
	Calculations	Pick up where you left off
	Dinner/Free Time	
	Clinical Topic	Tobacco Cessation (all)
	Break	
	Review Notecards	
	Review calendar for tomorrow. Make to-do list.	

### Wednesday

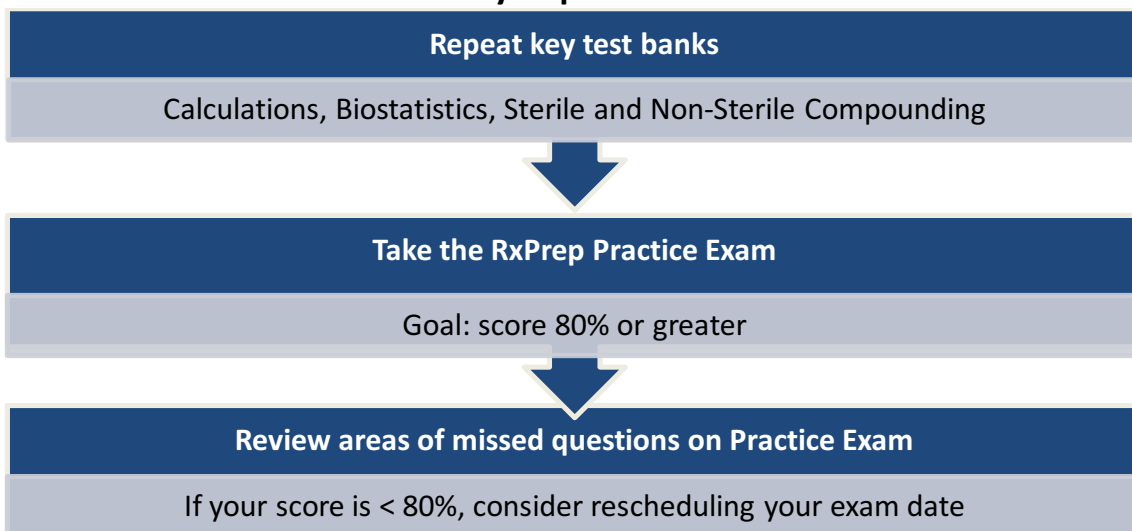
	ACTIVITY	NOTES
8-9am	Clinical Topic	Infectious Disease II (chapter +/- video)
9-9:15am	Break	
9:15-10:15am	Calculations	Pick up where you left off
10:15-11am	Break	
11-12pm	Clinical Topic	Infectious Disease II (test bank)
12-1pm	Lunch	
1-2pm	Calculations	Pick up where you left off
2-2:15pm	Break	
2:15-3:15pm	Clinical Topic	Infectious Diseases II (test bank)
3:15-3:30pm	Break	
3:30-4:30pm	Calculations	Pick up where you left off
4:30-7pm	Dinner/Free Time	
7-8pm	Clinical Topic	Travelers (all)
8-8:15pm	Break	
8:15-9:15pm	Review Notecards	
9:15-9:30pm	Review calendar for tomorrow. Make to-do list.	

### Thursday

	ACTIVITY	NOTES
	Clinical Topic	Ischemic Heart Disease (all)
	Break	
	Calculations	Pick up where you left off
	Break	
	Clinical Topic	Dyslipidemia (chapter +/- video)
	Lunch	
	Calculations	Pick up where you left off
	Break	
	Clinical Topic	Dyslipidemia (test bank)
	Break	
	Calculations	Pick up where you left off
	Dinner/Free Time	
	Clinical Topic	Dyslipidemia (test bank) / Anemia (all)
	Break	
	Review Notecards	
	Review calendar for tomorrow. Make to-do list.	

Chapter = read chapter, study content (learn bolded drugs and underlined content first) +/- video as needed or desired.  
 Test bank = complete test bank and make notecards for missed questions.

## 2 weeks before you plan to take the exam:



## When these are complete, you are ready to take the exam:

- 1 • The index card box is empty, meaning you know the test bank questions well
- 2 • Math is completed quickly and accurately  
• Formulas are known
- 3 • Score on RxPrep Practice Exam (NAPLEX, CPJE or MPJE) is 80% or greater. The higher the better.
- 4 • **Test and get licensed. You did it! On to a rewarding career as a pharmacist.**

