

Press Brakes  
Hydraulic Drives

Technical Information

**RE 08100**

Edition: 2015-06

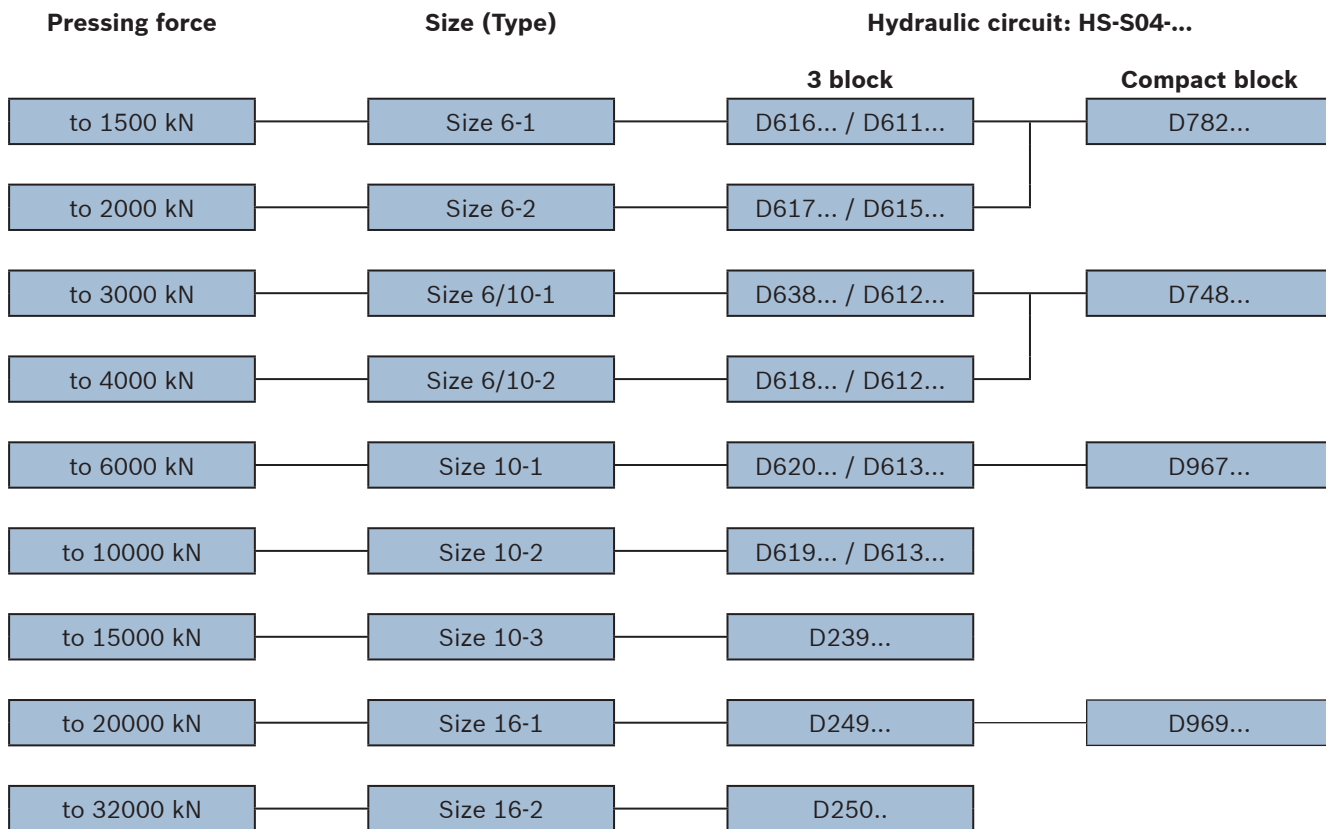
Replaces: 2015-04



**Content**

Available Standard Systems, Hydraulic Data Questionnaire for Hydraulics for Synchronized Press Brakes	2	Compact Block Design	
Hydraulic Circuit CE Version and NonCE Version 3 Block Design	3	– Compact Manifold Block: Standard Design, Size 6	18 - 19
– Cylinder Manifold Block with SFA	5 - 6	– Compact Manifold Block with Additional Functions, Size 6/10	20 - 21
– Cylinder Manifold Block with ZSF	7	– Compact Manifold Block with Additional Functions, Size 10	22 - 23
– Cylinder Manifold Block with SFE	8 - 9	– Compact Manifold Block with Additional Functions, Size 16	24 - 25
– Pump Manifold Block: Standard Design, Size 16 and 20	10	Drive Module	26 - 27
– Pump Manifold Block: Standard Design, Size 25	11	Compact Block Design for 1-cylinder or 2-cylinder Design, Synchronisation with Torsion Bar	28 - 31
– Pump Manifold Block with Additional Functions, Size 16 and 20	12	Accessories	32
– Pump Manifold Block with Additional Functions, Size 32 and 40	14		
– Pump Manifold Block for Direct Assembly, Size 16	16		

### Available Standard Systems



### Hydraulic Data

List of standard types								
Size 6-1	Size 6-2	Size 6/10-1	Size 6/10-2	Size 10-1	Size 10-2	Size 10-3	Size 16-1	Size 16-2
<b>Q<sub>max</sub> in l/min of the pump</b>								
60	120	240	320	520	900			
<b>Q<sub>max</sub> in l/min for the cylinder manifold block</b>								
30	60	120	160	260	450			
<b>Pressure p<sub>max</sub> = 315 bar</b>								
<b>max. permitted flow rate from A to B of the pre-fill valve (Z)SF... (l/min) <sup>1)</sup></b>								
200	300	500	800	1200	1900	3000		
<b>Δ p from connection X2 to T in bar</b>								
min. 30 bar								

<sup>1)</sup> The max. permitted oil velocity in the suction line must be observed

## Questionnaire for Hydraulics for Synchronized Press Brakes

### 1. Construction

Down stroking press

Fast approach by gravity  yes  no

Fast approach with regenerative circuit  yes  no

### 2. Cylinder

Piston diameter  $D$  in mm \_\_\_\_\_

Rod diameter  $d$  in mm \_\_\_\_\_

Stroke  $h$  in mm \_\_\_\_\_

Number 1 or 2 \_\_\_\_\_

### 3. Speeds

Fast approach  $v$  in mm/s \_\_\_\_\_ Total pump flow \_\_\_\_\_ l/min

Working speed  $v$  in mm/s \_\_\_\_\_ → \_\_\_\_\_ l/min

Fast return  $v$  in mm/s \_\_\_\_\_

### 4. Forces and Pressures

Max. required pressing force in kN \_\_\_\_\_

Weight of bending beam in kg \_\_\_\_\_

(Incl. cylinder piston, without tools)

### 5. Accuracy

Positioning accuracy in mm \_\_\_\_\_

### 6. Safety regulations

CE-Norm EN 12622  yes

Other regulations  yes \_\_\_\_\_  
Country / name

No regulations specified  yes

### 7. Selectable Options

Pressure filter up to 120 l/min mounted on the manifold block  yes  no

Hydraulic crowning  yes  no

Hydraulic tool clamping Upper tool  yes  no

Max. permissible pressure in bar \_\_\_\_\_

Lower tool  yes  no

Max. permissible pressure in bar \_\_\_\_\_

### Direction of filter cartridge selectable\*

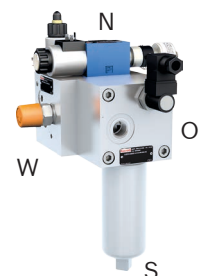
S = Filter cartridge downwards

N = Filter cartridge upwards

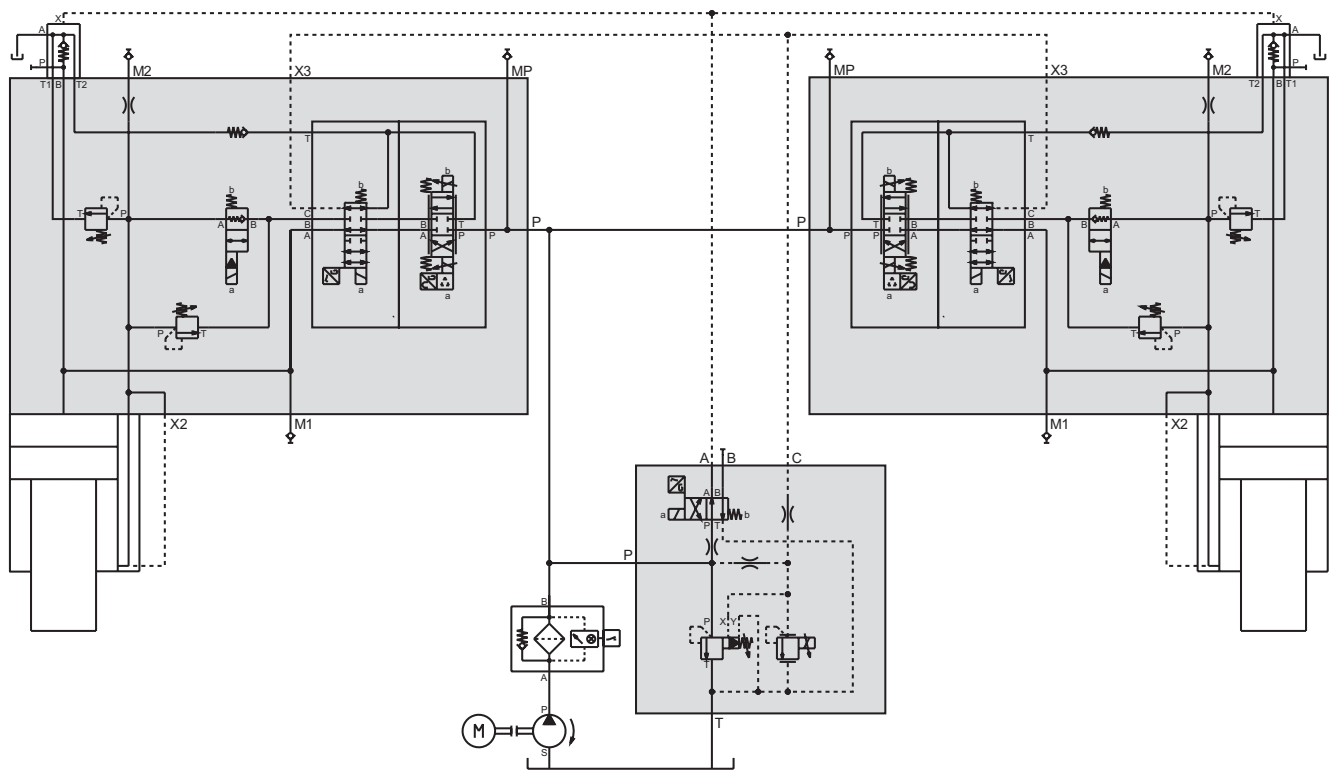
O = Filter cartridge right side

W = Filter cartridge left side

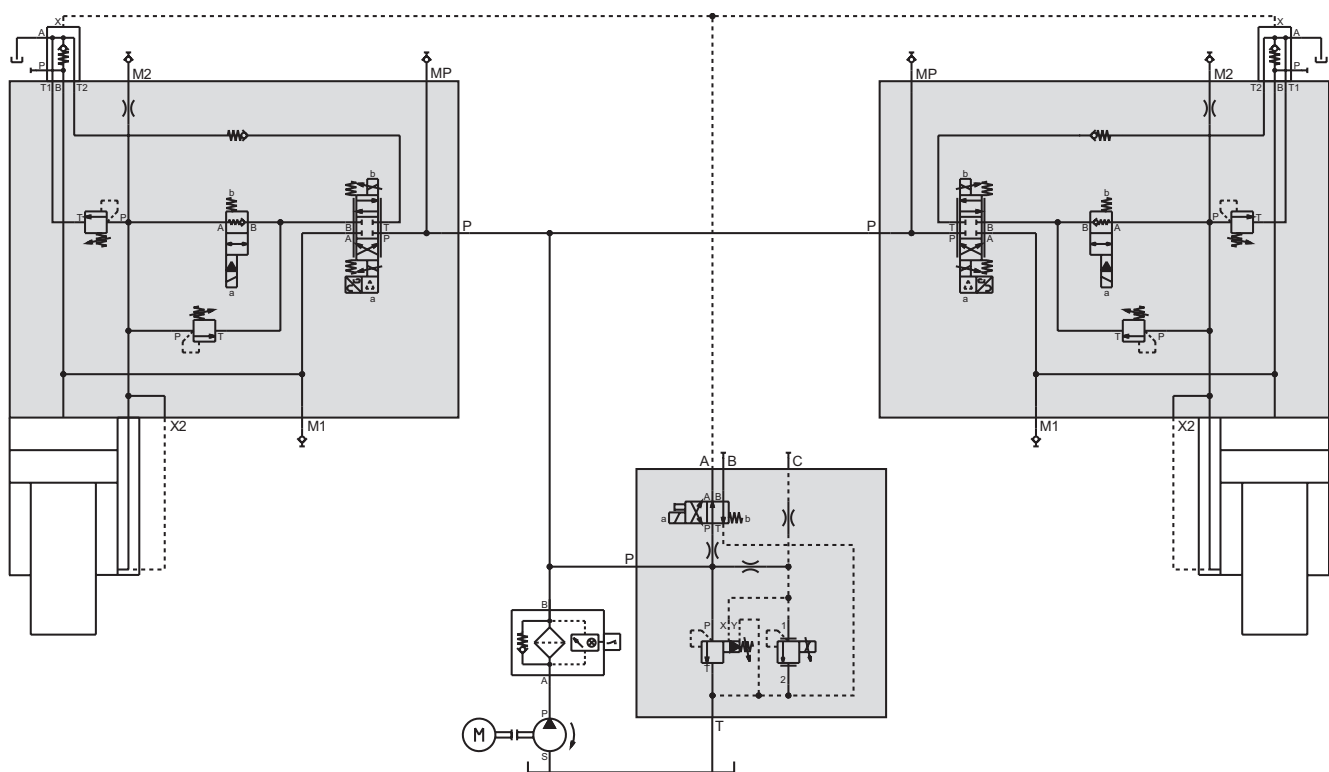
\* Relative to mounting surface of the block



### Hydraulic Circuit CE Version / 3 Block Design



### Hydraulic Circuit NonCE Version / 3 Block Design

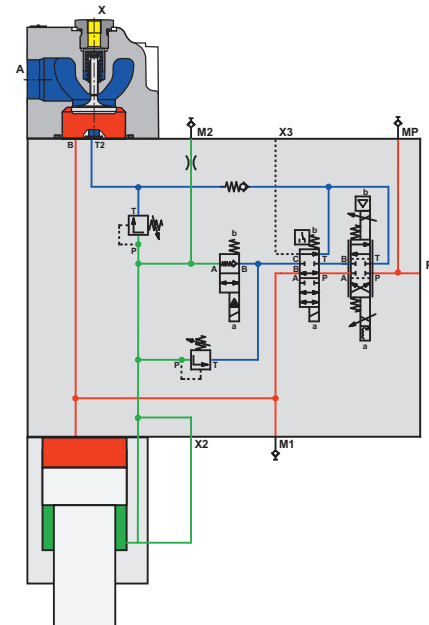


### 3 Block Design



#### Cylinder manifold block:

- ▶ Direct and pilot operated valves
- ▶ Suction valve – housing type pre-fill valve SFA



#### Specification

Size	Description manifold block <sup>1)</sup>	Pre-fill valve <sup>2)</sup>
<b>Size 6 directional proportional valve</b>		
Size 6-1	AGEV2-26941-../G24K4M/J50	SFA 32
Size 6-2	AGEV2-26907-../G24K4M/J50	SFA 40
Size 6/10-1	AGEV2-26974-../G24K4M/J50	SFA 40
Size 6/10-2	AGEV2-26944-../G24K4M/J50	SFA 50
<b>Size 10 directional proportional valve</b>		
Size 10-1	AGEV2-26945-../G24K4M/J50	SFA 50
Size 10-2 (CE)	AGEV2-26942-../G24K4M/J50	SFA 63
Size 10-2 (NonCE)	AGEV2-38093-../G24K4M/J50 <sup>3)</sup>	SFA 63
Size 10-3	AGEV2-38074-../G24K4M/J50 <sup>4)</sup>	SFA 80

<sup>1)</sup> Example see page 6.

<sup>2)</sup> Pre-fill valve is not part of the manifold block and must be ordered separately.

<sup>3)</sup> Only versions „B“, „D“ and „M“ possible: NonCE Version.

<sup>4)</sup> External pilot pressure supply required,

Pilot pressure unit IH15-BB006-1X/07008AA/G24N9K4V01, Ident-No. R901063308

### 3 Block Design

1) Example: AGEV2-26941-A A / G24K4M / J50

		<b>Proportional valve</b>
		<b>4WRAE 6</b> <sup>4), 6)</sup>
A =		3 l/min
B =		7 l/min
C =		15 l/min
D =		30 l/min
		<b>4WREE 6</b> <sup>4)</sup>
A =		4 l/min
B =		8 l/min
C =		16 l/min
D =		32 l/min
		<b>4WREE 10</b> <sup>4)</sup>
A =		25 l/min
B =		50 l/min
C =		75 l/min
		<b>4WRPEH 6</b> <sup>5), 7)</sup>
A =		2 l/min
B =		4 l/min
C =		12 l/min
D =		24 l/min
E =		40 l/min
		<b>4WRPEH 10</b> <sup>5), 7)</sup>
A =		50 l/min
B =		100 l/min
A =		CE version (4WREE)
B =		NonCE version (4WREE)
C =		CE version (4WRPEH)
D =		NonCE version (4WRPEH)
L =		CE version (4WRAE)
M =		NonCE version (4WRAE)

Other specifications on request!

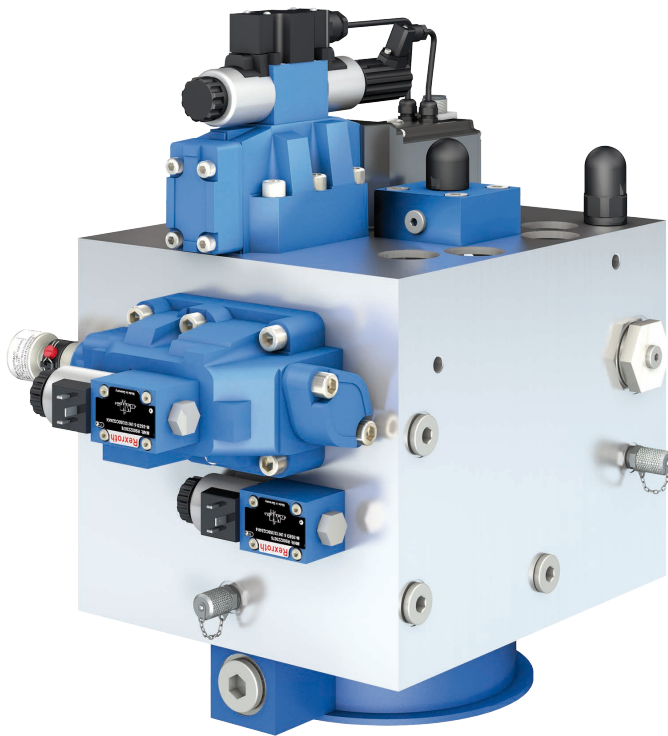
<sup>4)</sup> 5 bar / edge.

<sup>5)</sup> 35 bar / edge.

<sup>6)</sup> 4WRA version on request.

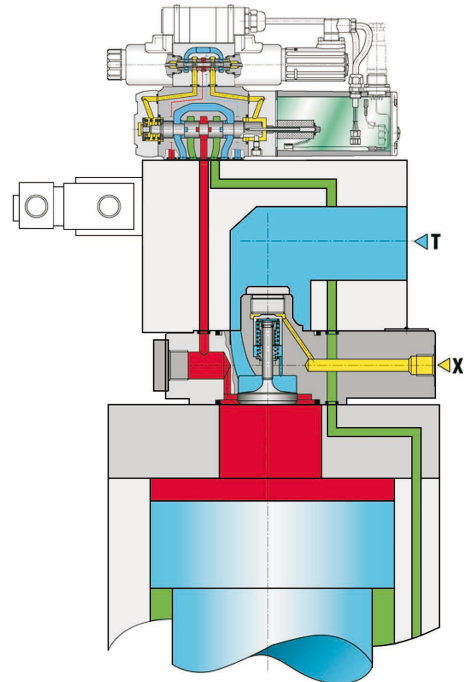
<sup>7)</sup> 4WRP version on request.

### 3 Block Design



#### Cylinder manifold block:

- ▶ Pilot operated valves <sup>3)</sup>
- ▶ Suction valve – sandwich type pre-fill valve ZSF



#### Specification

Size	Description manifold block <sup>1)</sup>	Pre-fill valve <sup>2)</sup>
<b>Size 16 directional pilot operated proportional valve</b>		
Size 16-1	AGEV2-26898-../G24K4M/J50	ZSF 100
Size 16-2	AGEV2-26967-../G24K4M/J50	ZSF 125

<sup>1)</sup> Example: AGEV2 — 26898 — A A / G24K4M / J50

	Proportional valve
A =	<b>4WRTE 10</b> 100 l/min
B =	<b>4WRTE 16</b> 125 l/min
C =	200 l/min
A =	CE version
B =	NonCE version

Other specifications on request!

<sup>2)</sup> Pre-fill valve is not part of the manifold block and must be ordered separately.

<sup>3)</sup> External pilot pressure supply required

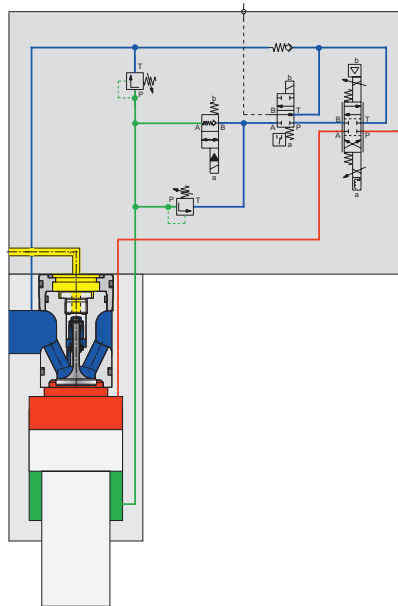
Pilot pressure unit IH15-BB006-1X/07008AA/G24N9K4V01, Ident-No. R901063308

### 3 Block Design



#### Cylinder manifold block:

- ▶ Direct operated valves
- ▶ Suction valve – cartridge type pre-fill valve SFE



#### Specification

Size	Description manifold block <sup>1)</sup>	Pre-fill valve <sup>2)</sup>
<b>Size 6 directional proportional valve</b>		
Size 6-1	AGEV2-26947-../G24K4M/J50	SFE 25 or SFE 32
Size 6-2	AGEV2-38013-../G24K4M/J50	SFE 32 or SFE 40
Size 6/10	AGEV2-26914-../G24K4M/J50	SFE 40 or SFE 50
<b>Size 10 directional proportional valve</b>		
Size 10 (CE)	AGEV2-26918-../G24K4M/J50	SFE 50 or SFE 63
Size 10 (NonCE)	AGEV2-26915-../G24K4M/J50 <sup>3)</sup>	SFE 50 or SFE 63

<sup>1)</sup> Example see page 9.

<sup>2)</sup> Pre-fill valve is not part of the manifold block and must be ordered separately.

<sup>3)</sup> Only versions „B“, „D“ and „M“ possible: NonCE Version.



### 3 Block Design

1) Example: 

AGEV2	—	26947	—	A		A	/	G24K4M	/	J50
-------	---	-------	---	---	--	---	---	--------	---	-----

		<b>Proportional valve</b>
		<b>4WRAE 6</b> <sup>4), 6)</sup>
A =		3 l/min
B =		7 l/min
C =		15 l/min
D =		30 l/min
		<b>4WREE 6</b> <sup>4)</sup>
A =		4 l/min
B =		8 l/min
C =		16 l/min
D =		32 l/min
		<b>4WREE 10</b> <sup>4)</sup>
A =		25 l/min
B =		50 l/min
C =		75 l/min
		<b>4WRPEH 6</b> <sup>5), 7)</sup>
A =		2 l/min
B =		4 l/min
C =		12 l/min
D =		24 l/min
E =		40 l/min
		<b>4WRPEH 10</b> <sup>5), 7)</sup>
A =		50 l/min
B =		100 l/min
A =		CE version (4WREE)
B =		NonCE version (4WREE)
C =		CE version (4WRPEH)
D =		NonCE version (4WRPEH)
L =		CE version (4WRAE)
M =		NonCE version (4WRAE)

Other specifications on request!

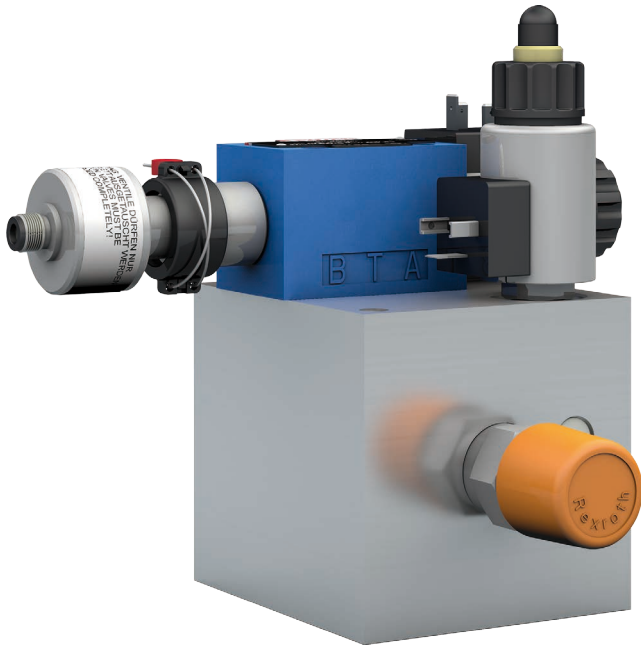
<sup>4)</sup> 5 bar / edge.

<sup>5)</sup> 35 bar / edge.

<sup>6)</sup> 4WRA version on request.

<sup>7)</sup> 4WRP version on request.

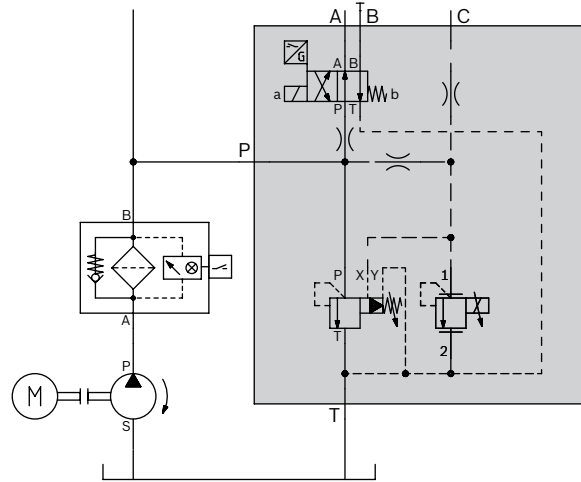
### 3 Block Design



**Pump manifold block:**

**Standard**

- ▶ DB 20 pressure relief valve



**Specification**

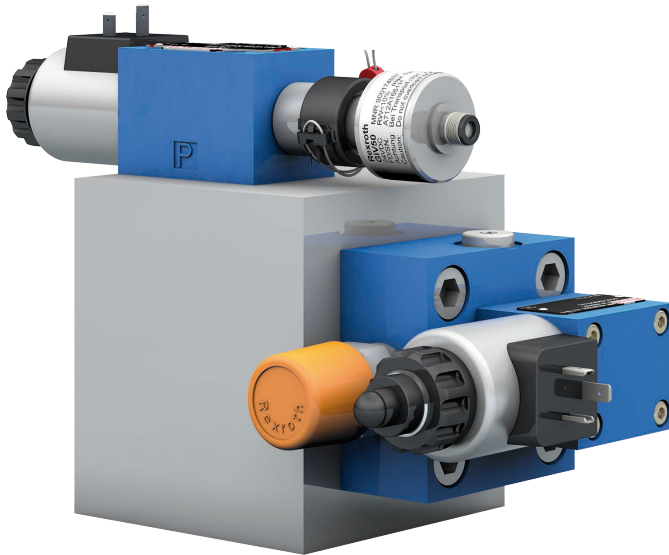
Size	Description manifold block <sup>1)</sup>	Max. volumetric flow of the pump
<b>Piloted operated pressure relief valve DB 20 + proportional pressure relief valve KBPS.8</b>		
Size 16	AGEV2-26949-../G24K4M/J50	95 l/min
Size 20	AGEV2-26950-../G24K4M/J50	150 l/min

<sup>1)</sup> **Example:** AGEV2-26949-A A / G24K4M / J50

A =	CE version
B =	NonCE version
A =	Without integrated electronic (KBPS.8) <sup>2)</sup>
Other specifications on request!	

<sup>2)</sup> Accessories: Plug-in proportional amplifier RE 30116.

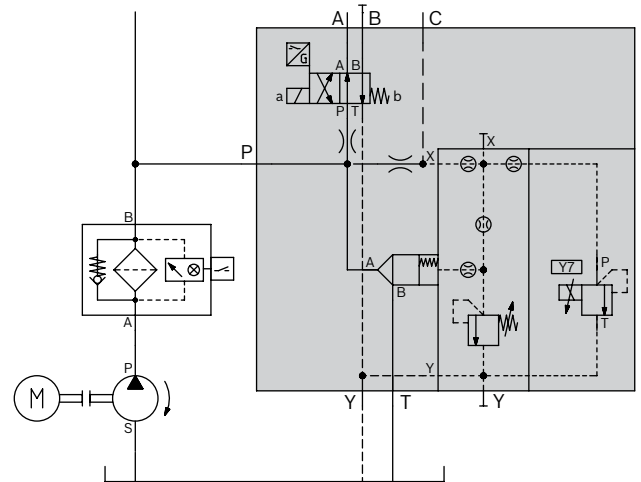
### 3 Block Design



#### Pump manifold block:

##### Standard

- ▶ LC pressure logic element
- 2-way-cartridge valves



#### Specification

Size	Description manifold block <sup>1)</sup>	Max. volumetric flow of the pump
<b>Pressure logic element LC + proportional pressure relief valve DBET(E)</b>		
Size 25	AGEV2-38036-../G24K4M/J50	250 l/min

1) Example: 

AGEV2	38036	A	A	G24K4M	J50
-------	-------	---	---	--------	-----

A =	CE version
B =	NonCE version

A = Without integrated electronic (DBET) <sup>2)</sup>

B = With integrated electronic (DBETE)

Other specifications on request!

<sup>2)</sup> Accessories: Plug-in proportional amplifier RE 30116.

### 3 Block Design



**Pump manifold block:**

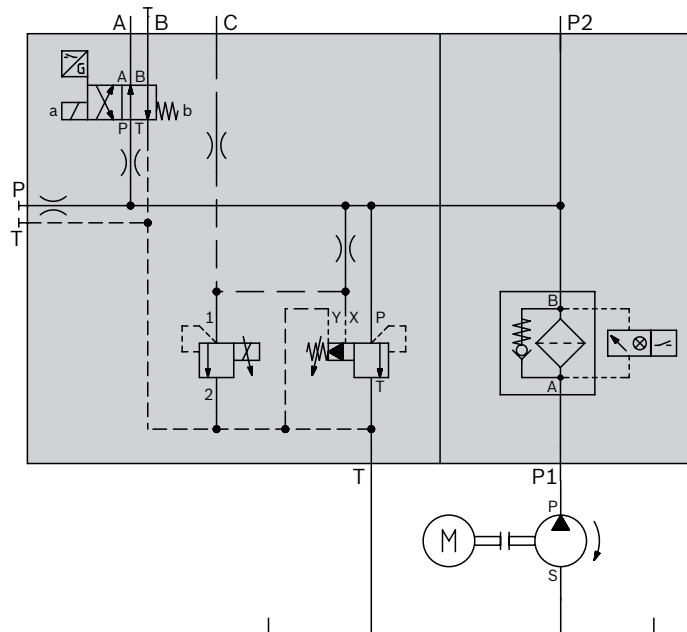
**With/without filter and additional functions**

- ▶ DB 20 pressure relief valve
- ▶ Filter can be rotated in 90 degree steps

**Specification**

Size	Description manifold block <sup>1)</sup>	Max. volumetric flow of the pump	Interface for additional functions <sup>2)</sup>
<b>Piloted operated pressure relief valve DB 20 + proportional pressure relief valve KBPS.8 + functions</b>			
Size 16	AGEV2-26968-../G24K4M/J50	75 l/min	IH15A
Size 20	AGEV2-26970-../G24K4M/J50	120 l/min	IH15B

<sup>1)</sup> Example see page 13.



### 3 Block Design

1) Example: 

AGEV2	26968	A	A	/	G24K4M	/	J50	/	101	S	*
-------	-------	---	---	---	--------	---	-----	---	-----	---	---

A =	CE version
B =	NonCE version
A =	Without integrated electronic (KBPS.8) <sup>3)</sup>

Not specified: without filter

S = Filter cartridge downwards <sup>4)</sup>

N = Filter cartridge upwards

O = Filter cartridge left side

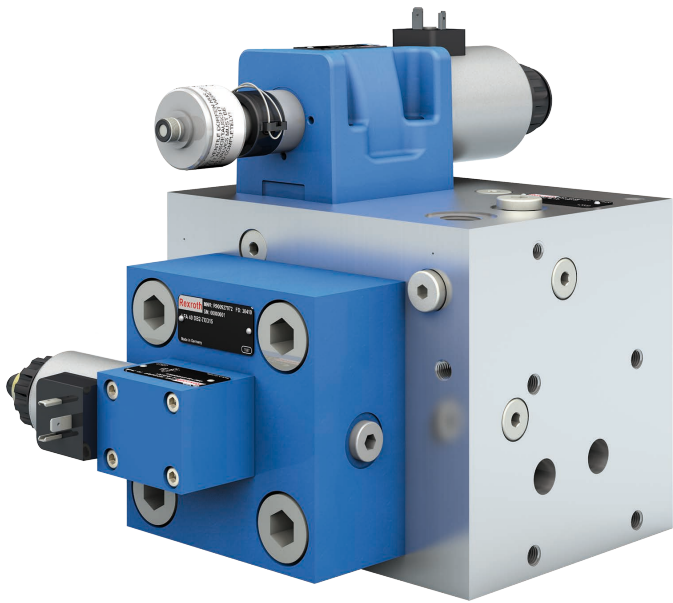
W = Filter cartridge right side

Description for additional functions on request (e.g. tool clamping, crowning) <sup>5)</sup>

Other specifications on request!

- 2) IH15 are not included in the pump block and must be ordered separately.
- 3) Accessories: Plug-in proportional amplifier RE 30116.
- 4) See photo page 12.
- 5) See page 32 for further details.

### 3 Block Design



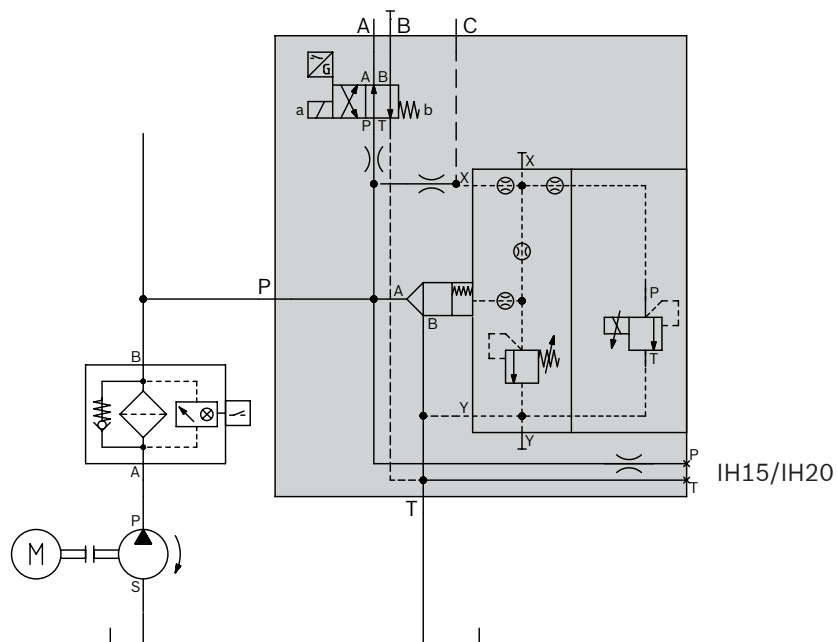
**Pump manifold block:  
With/without additional functions**

- ▶ LC pressure logic element
- 2-way-cartridge valves

#### Specification

Size	Description manifold block <sup>1)</sup>	Max. volumetric flow of the pump	Interface for additional functions <sup>2)</sup>
<b>Pressure logic element LC + proportional pressure relief valve DBET(E) + functions</b>			
Size 32	AGEV2-26962-../G24K4M/J50	400 l/min	IH15B
Size 40	AGEV2-26994-../G24K4M/J50	900 l/min	IH20

<sup>1)</sup> Example see page 15.



### 3 Block Design

1) Example: 

AGEV2	—	26962	—	A		A	//	G24K4M	//	J50	//	*
-------	---	-------	---	---	--	---	----	--------	----	-----	----	---

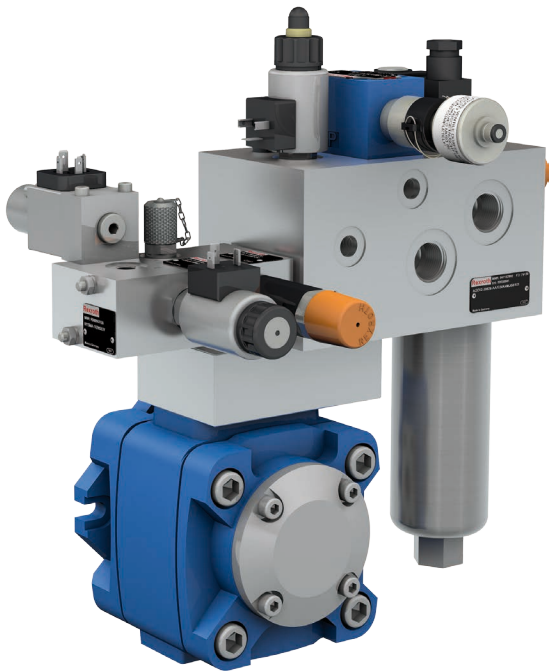
* =	Description for additional functions on request (e.g. tool clamping, crowning) <sup>4)</sup>
A =	CE version
B =	NonCE version
A =	Without integrated electronic (DBET) <sup>3)</sup>
B =	With integrated electronic (DBETE)
Other specifications on request!	

2) IH15/IH20 are not included in the pump block and must be ordered separately.

3) Accessories: Plug-in proportional amplifier RE 30116.

4) See page 32 for further details.

### 3 Block Design

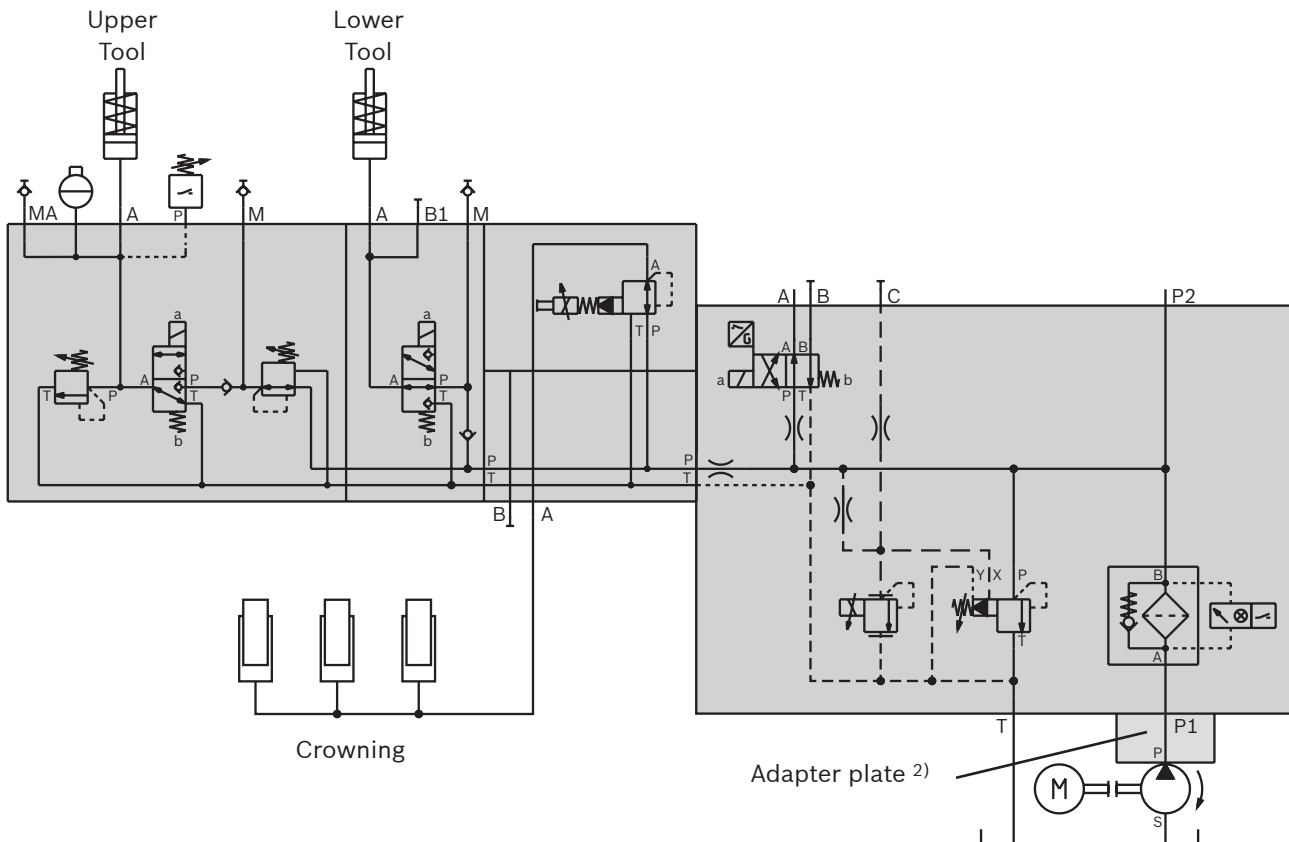


**Pump manifold block for direct mounting on the pressure connection of the pump:**  
 With filter and with/without additional functions  
 ► DB 20 pressure relief valve

#### Specification

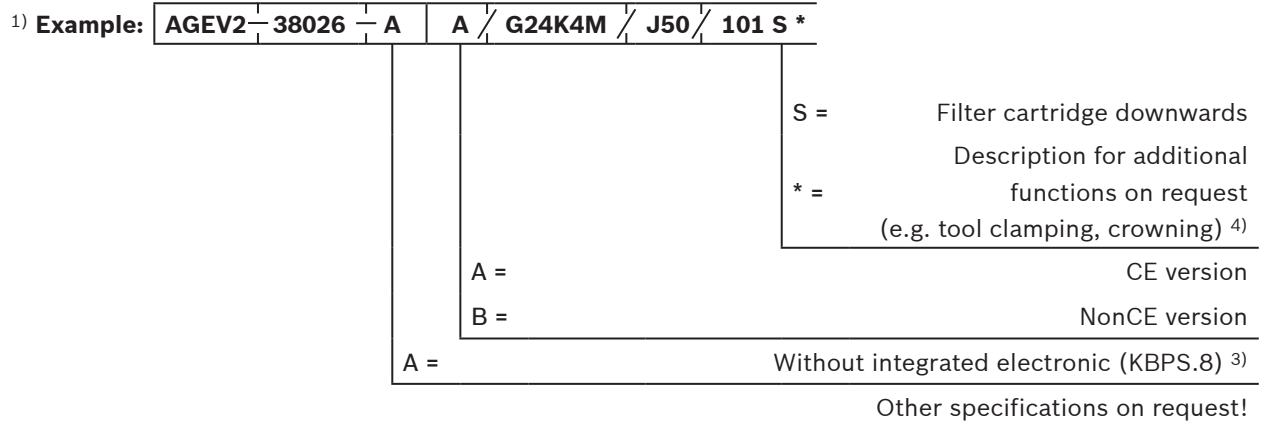
Size	Description manifold block <sup>1)</sup>	Max. volumetric flow of the pump	Interface for additional functions <sup>2)</sup>
<b>Piloted operated pressure relief valve DB 20 + proportional pressure relief valve KBPS.8 + functions</b>			
Size 16	AGEV2-38026-../G24K4M/J50/101S	75 l/min	IH15A

<sup>1)</sup> Example see page 17.





### 3 Block Design

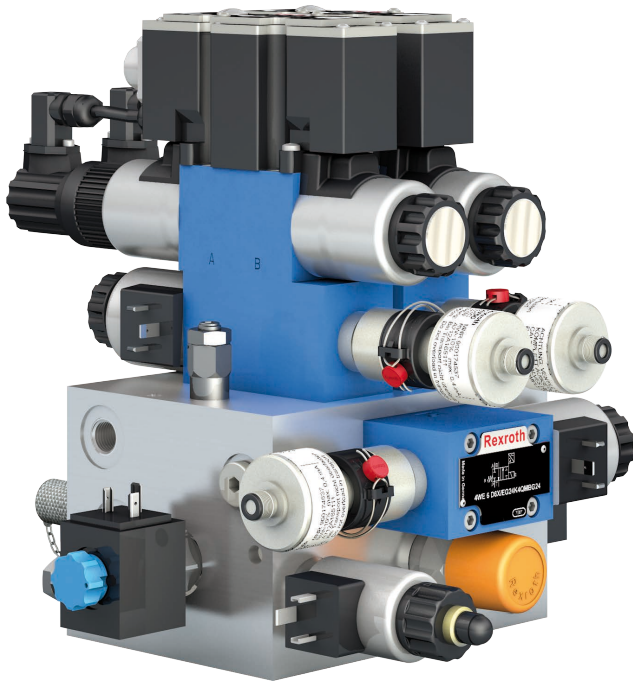


<sup>2)</sup> IH15 and/or adapter are not included in the pump block and must be ordered separately.

<sup>3)</sup> Accessories: Plug-in proportional amplifier RE 30116.

<sup>4)</sup> See page 32 for further details.

## Compact Block Design



### Compact manifold block:

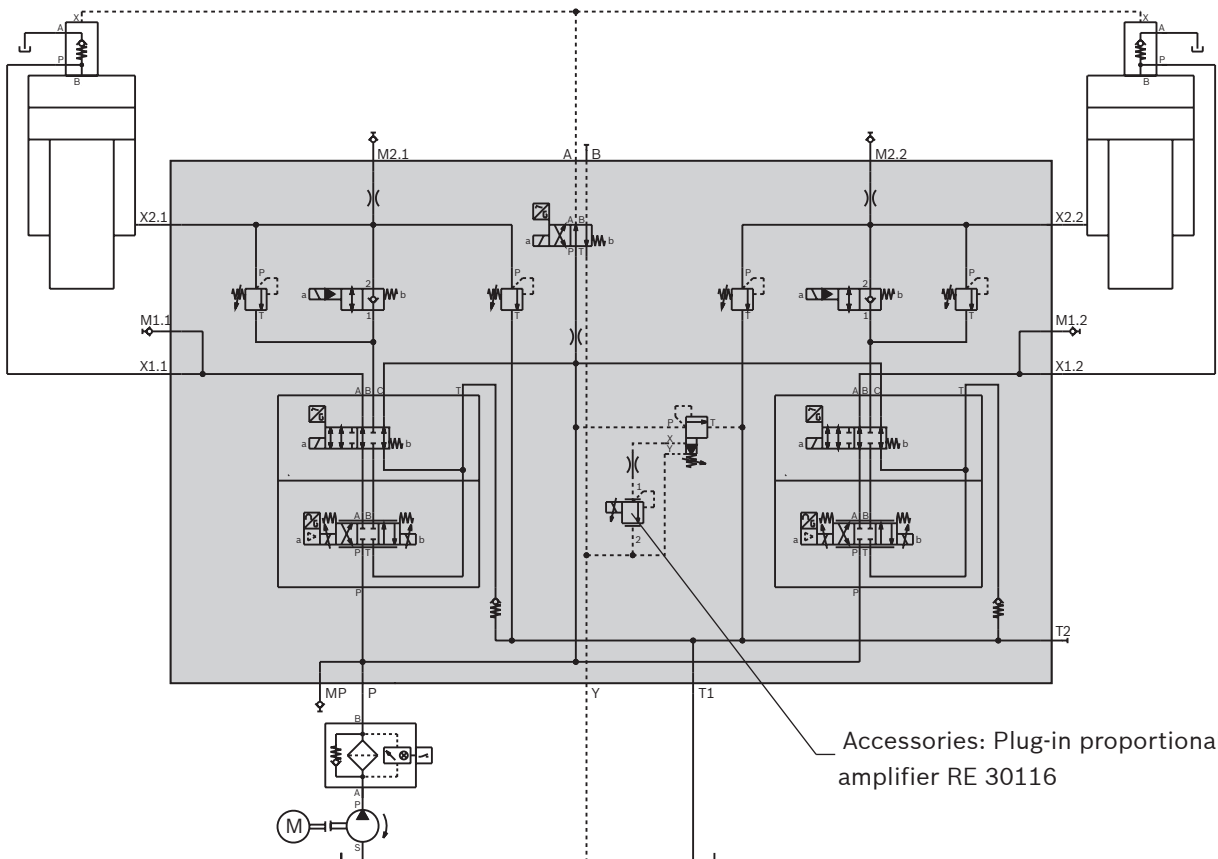
#### Standard

- ▶ Direct operated valves
- ▶ DB 10 pressure relief valve

### Specification

Size	Description manifold block <sup>1)</sup>	Max. volumetric flow of the pump
<b>Size 6 directional proportional valve</b>		
Size 6	AGEV2-26980-../G24K4M/J50	60 l/min

<sup>1)</sup> Example see page 19.



## Compact Block Design

1) Example: 

AGEV2	—	26980	—	A	A	/	G24K4M	/	J50
-------	---	-------	---	---	---	---	--------	---	-----

	<b>Proportional valve</b>
	<b>4WRAE 6</b> <sup>4), 6)</sup>
A =	3 l/min
B =	7 l/min
C =	15 l/min
D =	30 l/min
	<b>4WREE 6</b> <sup>4)</sup>
A =	4 l/min
B =	8 l/min
C =	16 l/min
D =	32 l/min
	<b>4WRPEH 6</b> <sup>5), 7)</sup>
A =	2 l/min
B =	4 l/min
C =	12 l/min
D =	24 l/min
E =	40 l/min
A =	CE version (4WREE)
B =	NonCE version (4WREE)
C =	CE version (4WRPEH)
D =	NonCE version (4WRPEH)
L =	CE version (4WRAE)
M =	NonCE version (4WRAE)

Other specifications on request!

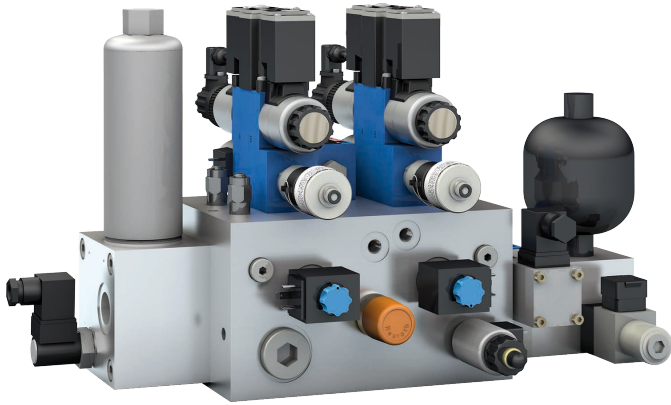
4) 5 bar / edge.

5) 35 bar / edge.

6) 4WRA version on request.

7) 4WRP version on request.

## Compact Block Design



### Compact manifold block:

#### With/without filter and additional functions

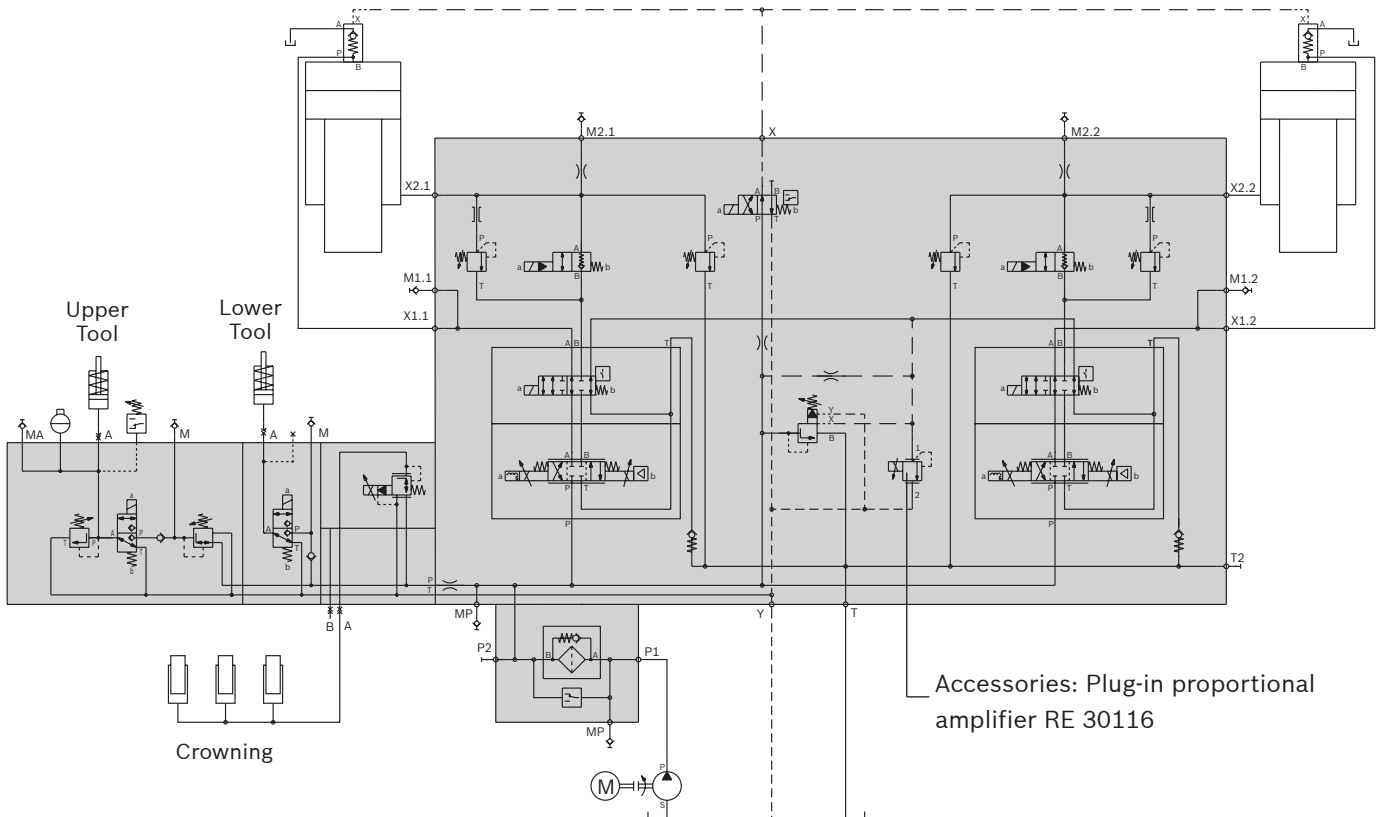
- ▶ Direct operated valves
- ▶ DB 20 pressure relief valve
- ▶ Filter can be rotated in 90° steps

### Specification

Size	Description manifold block <sup>1)</sup>	Max. volumetric flow of the pump	Interface for additional functions <sup>2)</sup>
<b>Size 6 directional proportional valve</b>			
Size 6/10	AGEV2-26921-../G24K4M/J50	120 l/min	IH15A

<sup>1)</sup> Example see page 21.

<sup>2)</sup> IH15 is not included in the pump block and must be ordered separately.



## Compact Block Design

1) Example: AGEV2 – 26921 – A A / G24K4M / J50 / 101 N \*

	Not specified: without filter
S =	Filter cartridge downwards
N =	Filter cartridge upwards
O =	Filter cartridge left side
W =	Filter cartridge right side
	Description for additional functions on request
* =	(e.g. tool clamping, crowning) <sup>8)</sup>

### Proportional valve

#### 4WRAE 6 <sup>4), 6)</sup>

A =	3 l/min
B =	7 l/min
C =	15 l/min
D =	30 l/min

#### 4WREE 6 <sup>4)</sup>

A =	4 l/min
B =	8 l/min
C =	16 l/min
D =	32 l/min

#### 4WRPEH 6 <sup>5), 7)</sup>

A =	2 l/min
B =	4 l/min
C =	12 l/min
D =	24 l/min
E =	40 l/min

A =	CE version (4WREE)
B =	NonCE version (4WREE)
C =	CE version (4WRPEH)
D =	NonCE version (4WRPEH)
L =	CE version (4WRAE)
M =	NonCE version (4WRAE)

Other specifications on request!

<sup>4)</sup> 5 bar / edge.

<sup>5)</sup> 35 bar / edge.

<sup>6)</sup> 4WRA version on request.

<sup>7)</sup> 4WRP version on request.

<sup>8)</sup> See page 32 for further details.

## Compact Block Design



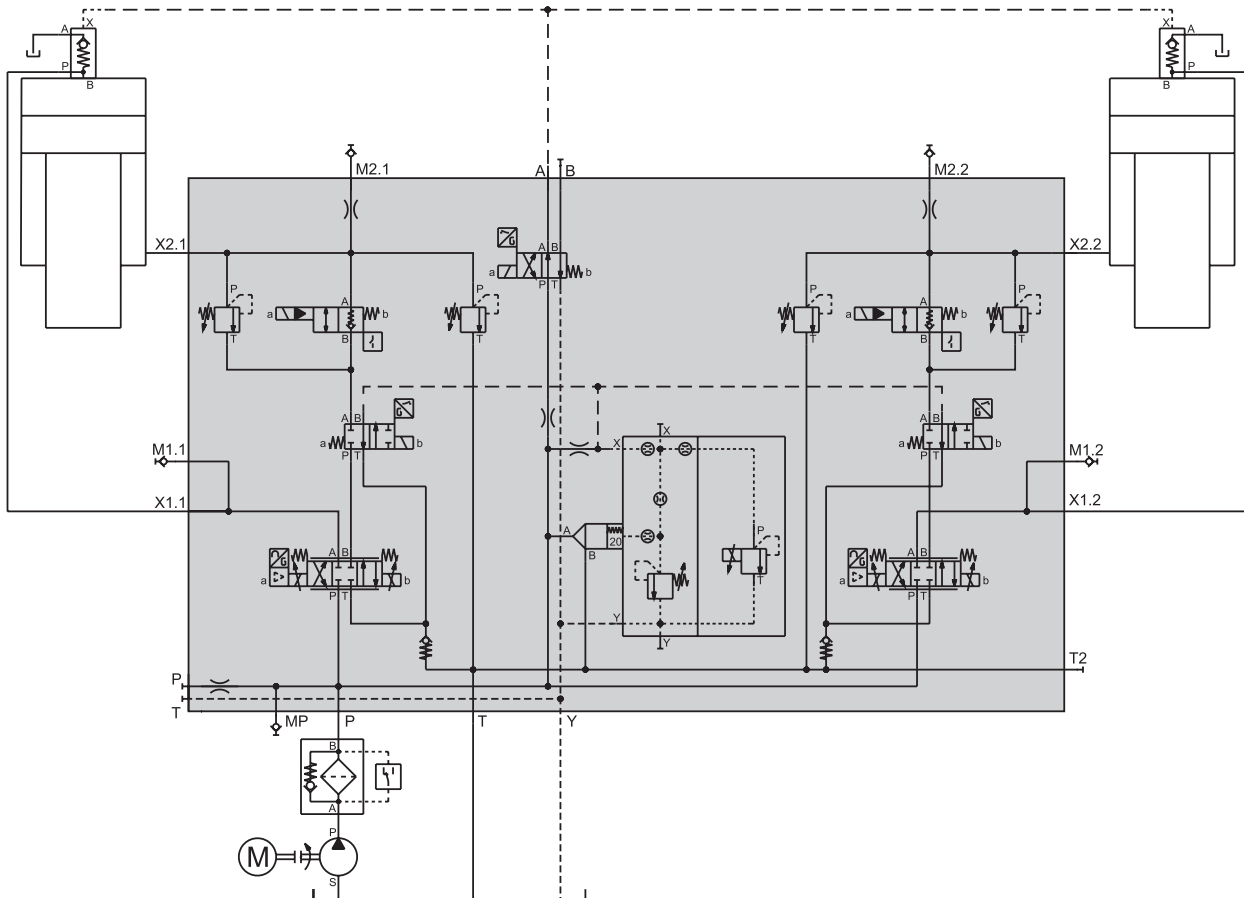
### Compact manifold block: With/without additional functions

- ▶ Direct operated valves
- ▶ LC pressure logic element
- 2-way-cartridge valves

### Specification

Size	Description manifold block <sup>1)</sup>	Max. volumetric flow of the pump	Interface for additional functions <sup>2)</sup>
<b>Size 10 directional proportional valve</b>			
Size 10	AGEV2-38145-../G24K4M/J50	250 l/min	IH15B

<sup>1)</sup> Example see page 23.



## Compact Block Design

1) Example: 

AGEV2	—	38145	—	A
-------	---	-------	---	---

 | 

A	/	G24K4M	/	J50	/	*
---	---	--------	---	-----	---	---

	*	=	Description for additional functions on request (e.g. tool clamping, crowning) <sup>8)</sup>
			<b>Proportional valve</b> <sup>9)</sup>
			<b>4WREE 10</b> <sup>4)</sup>
	A =		25 l/min
	B =		50 l/min
	C =		75 l/min
			<b>4WRPEH 10</b> <sup>5), 7)</sup>
	A =		50 l/min
	B =		100 l/min
A =			CE version (4WREE)
B =			NonCE version (4WREE)
C =			CE version (4WRPEH)
D =			NonCE version (4WRPEH)
			Other specifications on request!

2) IH15 is not included in the pump block and must be ordered separately.

4) 5 bar / edge.

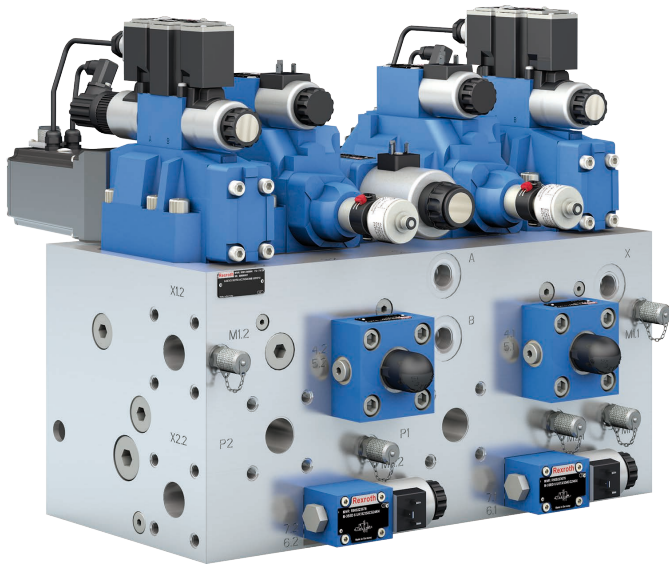
5) 35 bar / edge.

7) 4WRP version on request.

8) See page 32 for further details.

9) 4WRTE version on request.

## Compact Block Design



### Compact manifold block:

#### Standard

- ▶ Pilot operated valves <sup>2)</sup>
- ▶ LC pressure logic element  
2-way-cartridge valves

### Specification

Size	Description manifold block <sup>1)</sup>	Max. volumetric flow of the pump
<b>Size 16 directional pilot operated proportional valve</b>		
Size 16	AGEV2-38158-../G24K4M/J50	720 l/min (2 x 360 l/min)

1) Example: 

AGEV2	38158	A	A	G24K4M	J50
-------	-------	---	---	--------	-----

	<b>Proportional valve</b>
	<b>4WRTE <sup>3)</sup></b>
A =	125 l/min
B =	150 l/min
C =	200 l/min
D =	220 l/min
A =	CE version (4WRTE)
B =	NonCE version (4WRTE)

Other specifications on request!

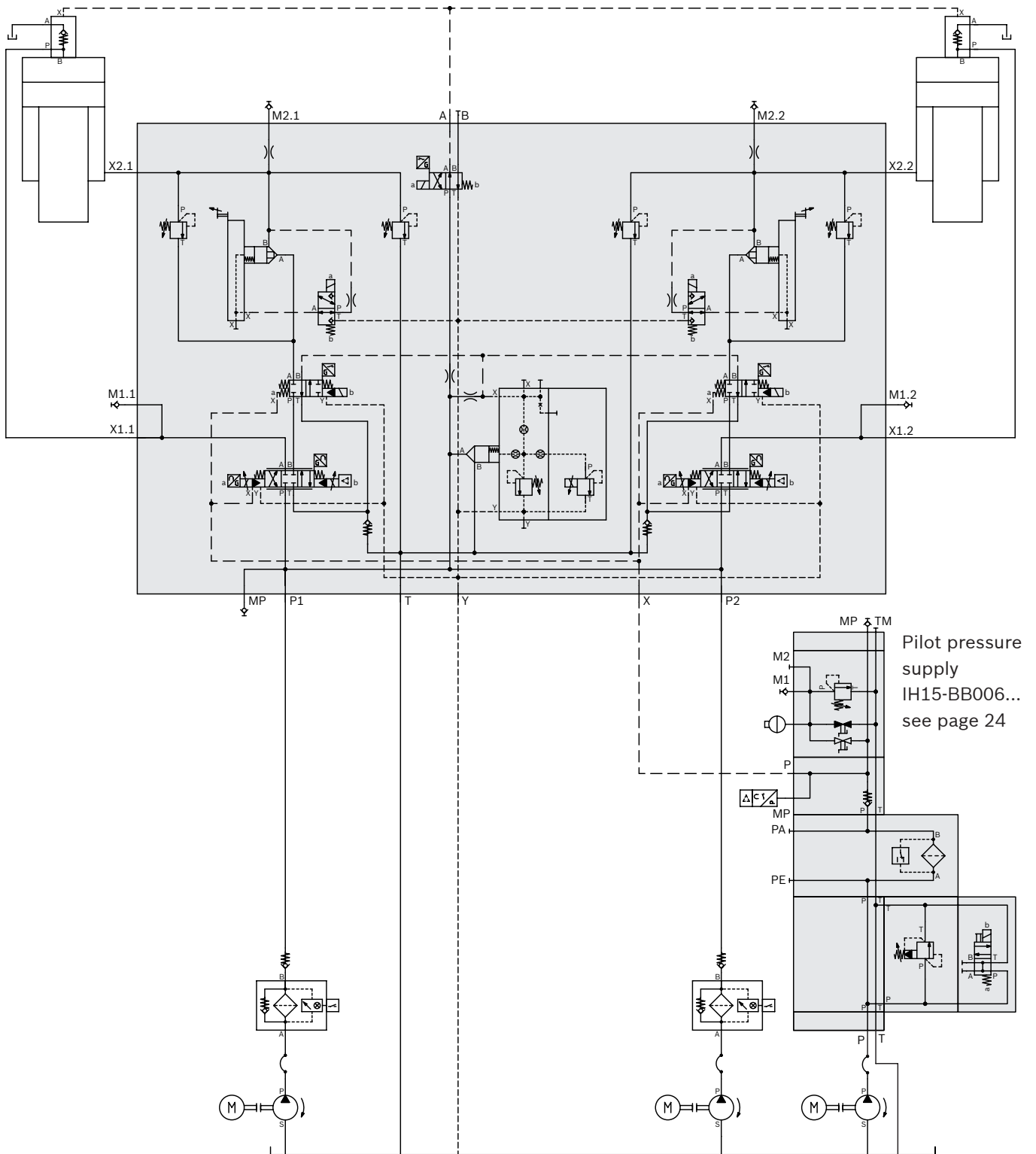
<sup>2)</sup> External pilot pressure supply required

Pilot pressure unit IH15-BB006-1X/07008AA/G24N9K4V01, Ident-No. R901063308

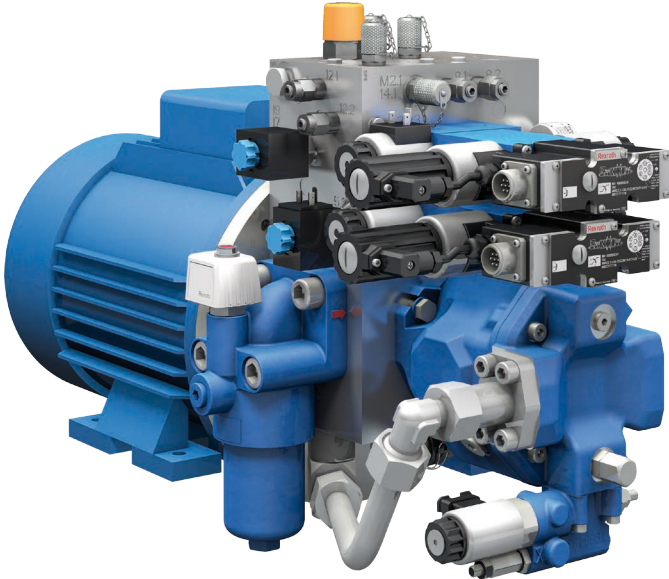
<sup>3)</sup> 5 bar / edge.



### Compact Block Design



## Drive Module



### Drive module:

#### With Internal gear pump

- ▶ PGH 11, 13 and 16 ccm
- ▶ E-motor size 132
- ▶ Compact design
- ▶ With filter and/or additional functions

#### With axial piston pump

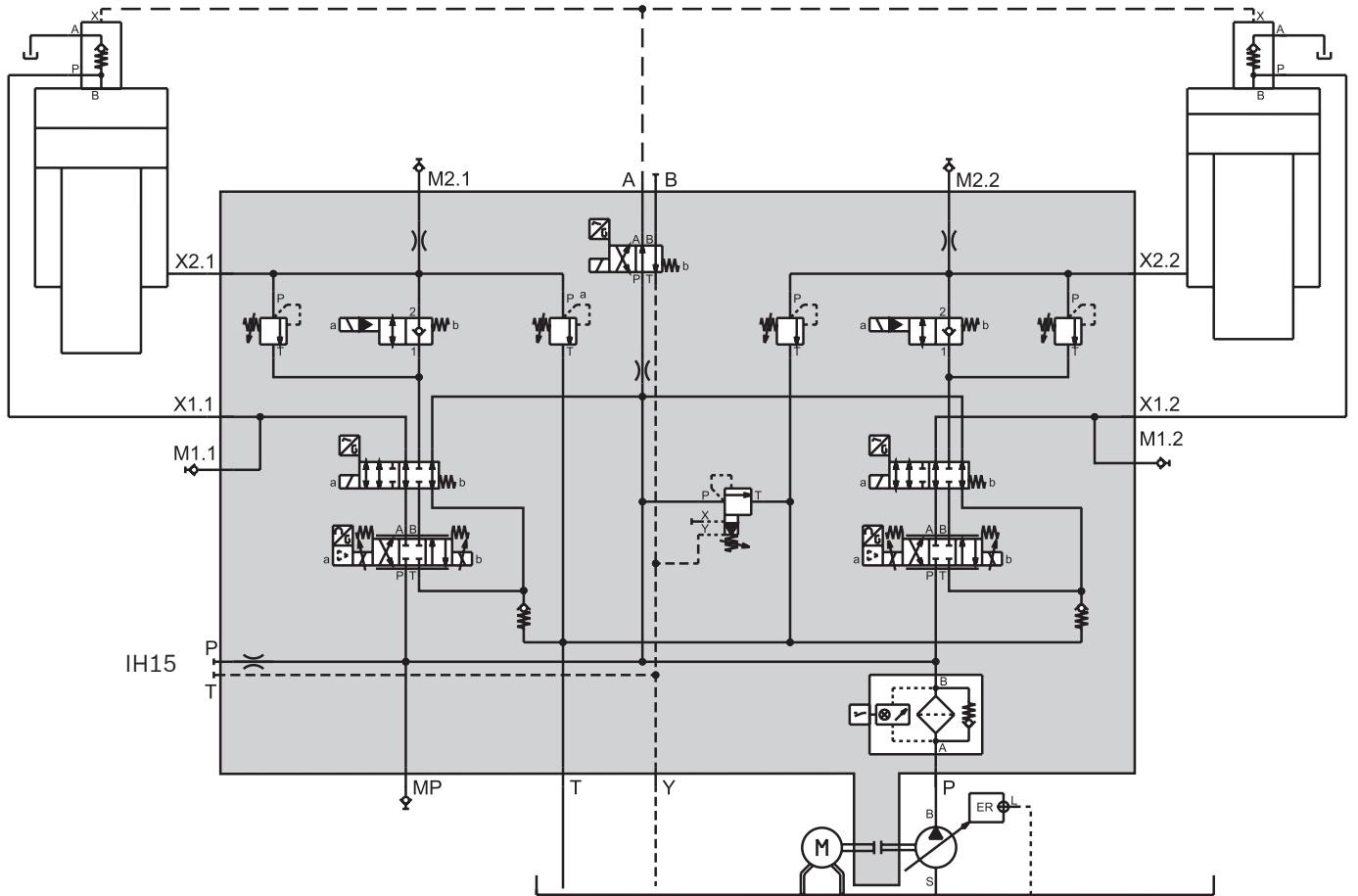
- ▶ A10VSO18ER

**Example:** IH04APAM 3 S 1X / G 132 A / 10001-AB \* \*

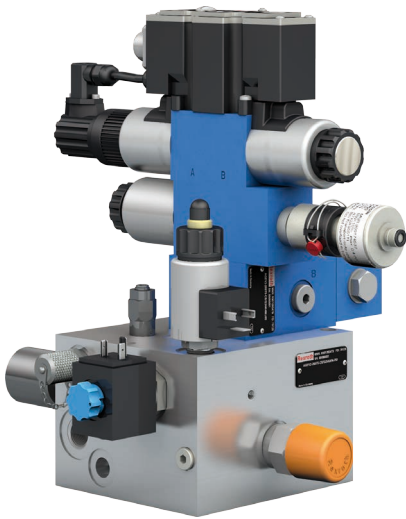
									Description for additional functions on request (e.g. tool clamping, crowning) <sup>2)</sup>	
									* =	
									SO-No. (special version number)	
									Proportional valve (see page 19)	
									Manifold block HICS	
									E-motor <sup>1)</sup>	
									A =                    7,5 kW	
									B =                    5,5 kW	
									X =                    Without	
									E-Motor size	
									Pump <sup>2)</sup>	
									G =                    PGH3	
									A =                    A10VSO18	
									Safety	
									S =                    CE version	
									N =                    NonCE version	
									Size	

<sup>1)</sup> Voltage / frequency must be indicated separately.  
<sup>2)</sup> See page 32 for further details.

**Drive Module**



### Compact Block Design, 1-cylinder or 2-cylinder design, synchronisation with torsion bar



**Compact manifold block:**

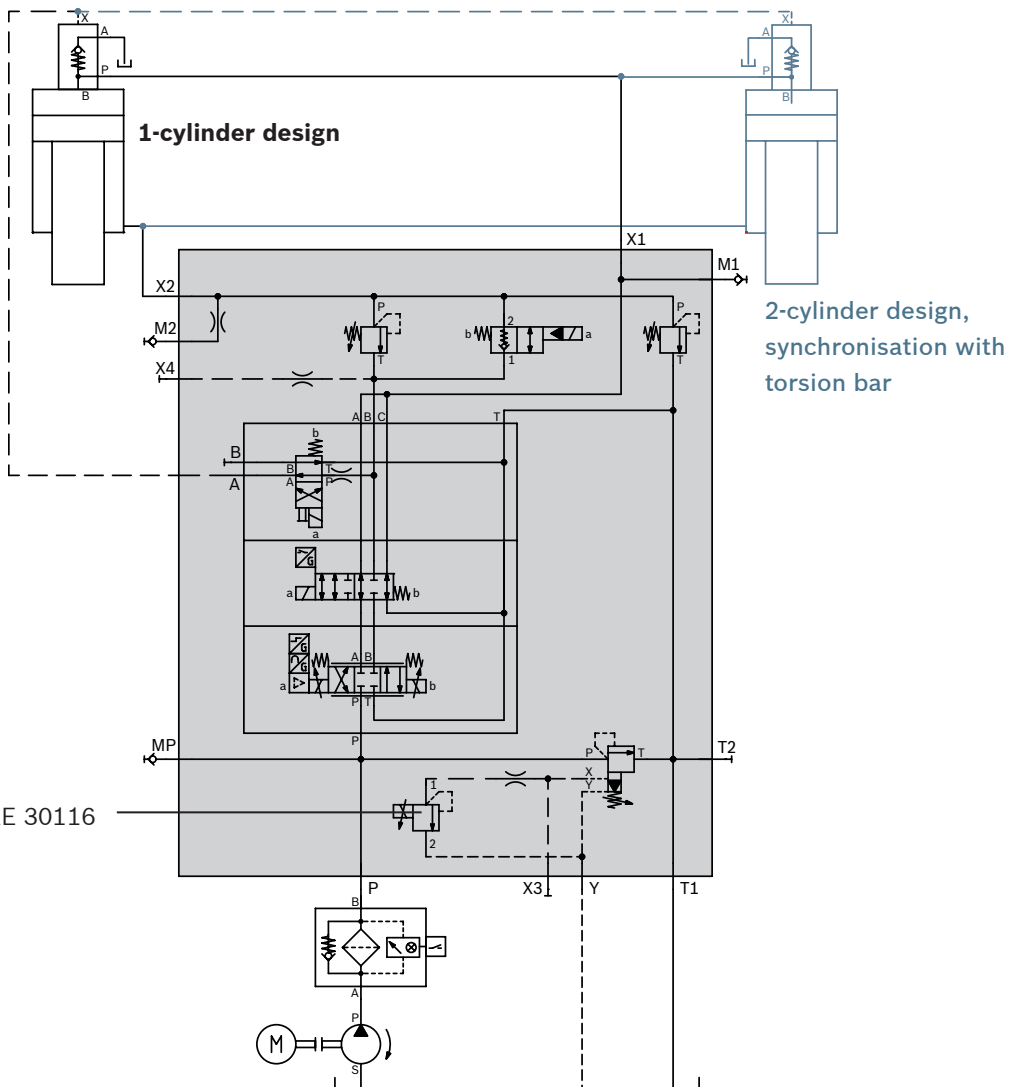
**Standard**

- ▶ Direct operated valves
- ▶ DB 10 pressure relief valve

**Specification**

Size	Description manifold block <sup>1), 3)</sup>	Max. volumetric flow of the pump
<b>Size 6 directional pilot operated proportional valve</b>		
Size 6	AGEV2-26978-../G24K4M/J50	60 l/min

<sup>1)</sup> Example see page 29.



Accessories: Plug-in proportional amplifier RE 30116

### Compact Block Design, 1-cylinder or 2-cylinder design, synchronisation with torsion bar

1) Example: 

AGEV2	—	26978	—	C	A	/	G24K4M	/	J50
-------	---	-------	---	---	---	---	--------	---	-----

		<b>Proportional valve</b>
		<b>4WRAE 6</b> <sup>4), 6)</sup>
	A =	3 l/min
	B =	7 l/min
	C =	15 l/min
	D =	30 l/min
		<b>4WREEM/WREE 6</b> <sup>4)</sup>
	A =	4 l/min
	B =	8 l/min
	C =	16 l/min
	D =	32 l/min
		<b>4WRPEH 6</b> <sup>5), 7)</sup>
	A =	2 l/min
	B =	4 l/min
	C =	12 l/min
	D =	24 l/min
	E =	40 l/min
C =		CE version (4WREEM)
D =		CE version (4WREE) <sup>2)</sup>
E =		NonCE version (4WREE)
F =		CE version (4WRPEH) <sup>2)</sup>
G =		NonCE version (4WRPEH)
L =		CE version (4WRAE) <sup>2)</sup>
M =		NonCE version (4WRAE)

Other specifications on request!

<sup>2)</sup> Speed measuring device required for monitoring direction of cylinder movement.

<sup>3)</sup> Also available with on-off valve technology on request.

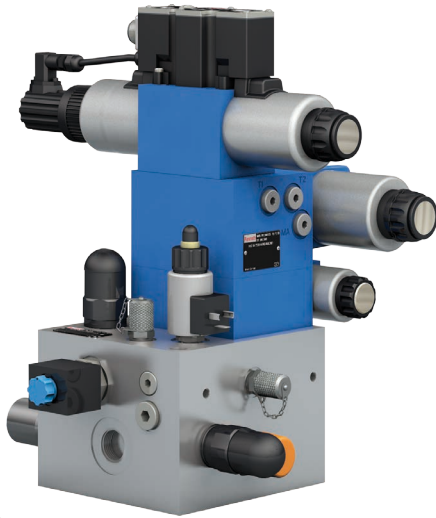
<sup>4)</sup> 5 bar / edge.

<sup>5)</sup> 35 bar / edge.

<sup>6)</sup> 4WRA version on request.

<sup>7)</sup> 4WRP version on request.

### Compact Block Design, 1-cylinder or 2-cylinder design, synchronisation with torsion bar



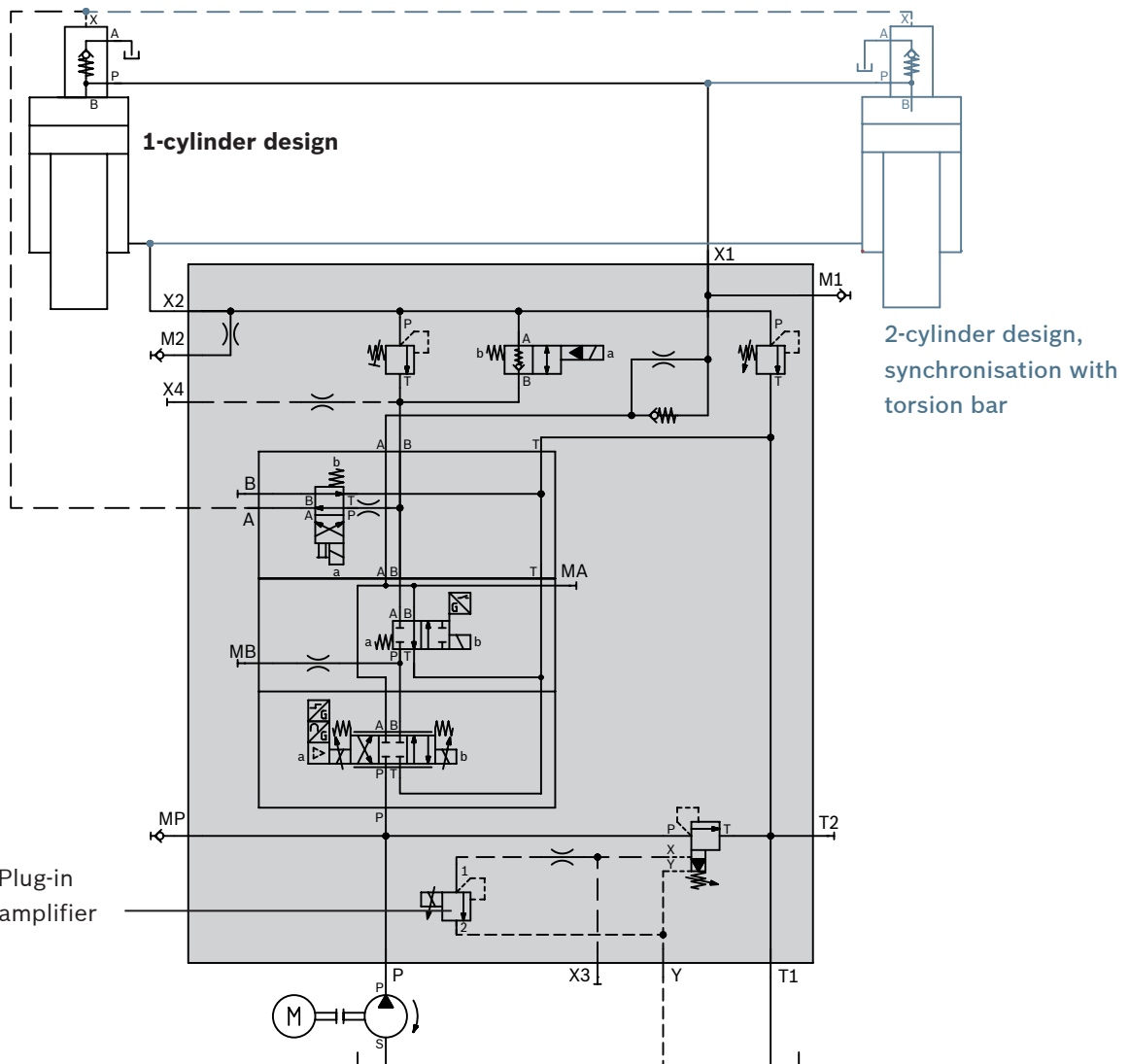
**Compact manifold block:**  
**With/without additional functions**

- ▶ Direct operated valves
- ▶ DB 20 pressure relief valve

**Specification**

Size	Description manifold block <sup>1), 3)</sup>	Max. volumetric flow of the pump
<b>Size 10 directional pilot operated proportional valve</b>		
Size 10	AGEV2-38033-../G24K4M/J50	120 l/min

<sup>1)</sup> Example see page 31.



Accessories: Plug-in proportional amplifier RE 30116

### Compact Block Design, 1-cylinder or 2-cylinder design, synchronisation with torsion bar

1) Example: 

AGEV2	—	38033	—	C		A	/	G24K4M	/	J50
-------	---	-------	---	---	--	---	---	--------	---	-----

	<b>Proportional valve</b>
	<b>4WREEM/WREE 10</b> <sup>4)</sup>
A =	25 l/min
B =	50 l/min
C =	75 l/min
	<b>4WRPEH 10</b> <sup>5), 7)</sup>
A =	50 l/min
B =	100 l/min
C =	CE version (4WREEM)
D =	CE version (4WREE) <sup>2)</sup>
E =	NonCE version (4WREE)
F =	CE version (4WRPEH) <sup>2)</sup>
G =	NonCE version (4WRPEH)

Other specifications on request!

- 2) Speed measuring device required for monitoring direction of cylinder movement.
- 3) Also available with on-off valve technology on request.
- 4) 5 bar / edge.
- 5) 35 bar / edge.
- 7) 4WRP version on request.

**Crowning**

	Type	Ident-No.	Data Sheet	
<b>Tank mounting</b>	HSG 06	R901209044		
	DRE6	0811402058	RE 29177	
<b>Block mounting</b>	IH15		RE 51144	
	DRE6	0811402058	RE 29177	
<b>Optional</b>	Plug amplifier	0811405144	RE 30264	

**Tool Clamping**

	Type	Data Sheet
<b>Single module</b>	IH15A	RE 51144
<b>Single module</b>	IH15B	RE 51156

**Pumps**

	Type	Data Sheet
	PGP	RE 10231
	PGH	RE 10223, 10227
	A10VSO	RE 92707

**Pressure Filter**

	Type	Data Sheet
	In-line filter	RE 51422



Bosch Rexroth AG  
Hydraulics  
Zum Eisengießer 1  
97816 Lohr am Main, Germany  
Telefon +49 (0) 93 52/18-0  
documentation@boschrexroth.de  
www.boschrexroth.de

© This document, as well as the data, specifications and other information set forth in it, are the exclusive property of Bosch Rexroth AG. It may not be reproduced or given to third parties without its consent. The data specified above only serve to describe the product. No statements concerning a certain condition or suitability for a certain application can be derived from our information. The information given does not release the user from the obligation of own judgment and verification. It must be remembered that our products are subject to a natural process of wear and aging.