

Print Photos in Any Size

Half the fun of digital photography is the instant gratification it provides. As soon as you snap a picture, you can see how it turns out. Better yet, you can print those photos right after you take them! With high-quality color printers and glossy photo paper you can print your photos at home, then share them with everyone you know. Using Paint Shop Photo Album you can easily arrange your photos in any configuration of sizes, and even print different photos on the same sheet — letting you make the most of your photo paper!

What you'll need:

- A digital photo
- Jasc® Paint Shop™ Photo Album™
- Paper
- A printer

When you complete this tutorial you'll be able to:

- Select an album
- Open the Print Layout window
- Select a Print Template
- Place photos in a template
- Make adjustments to photos in a template
- Print photos

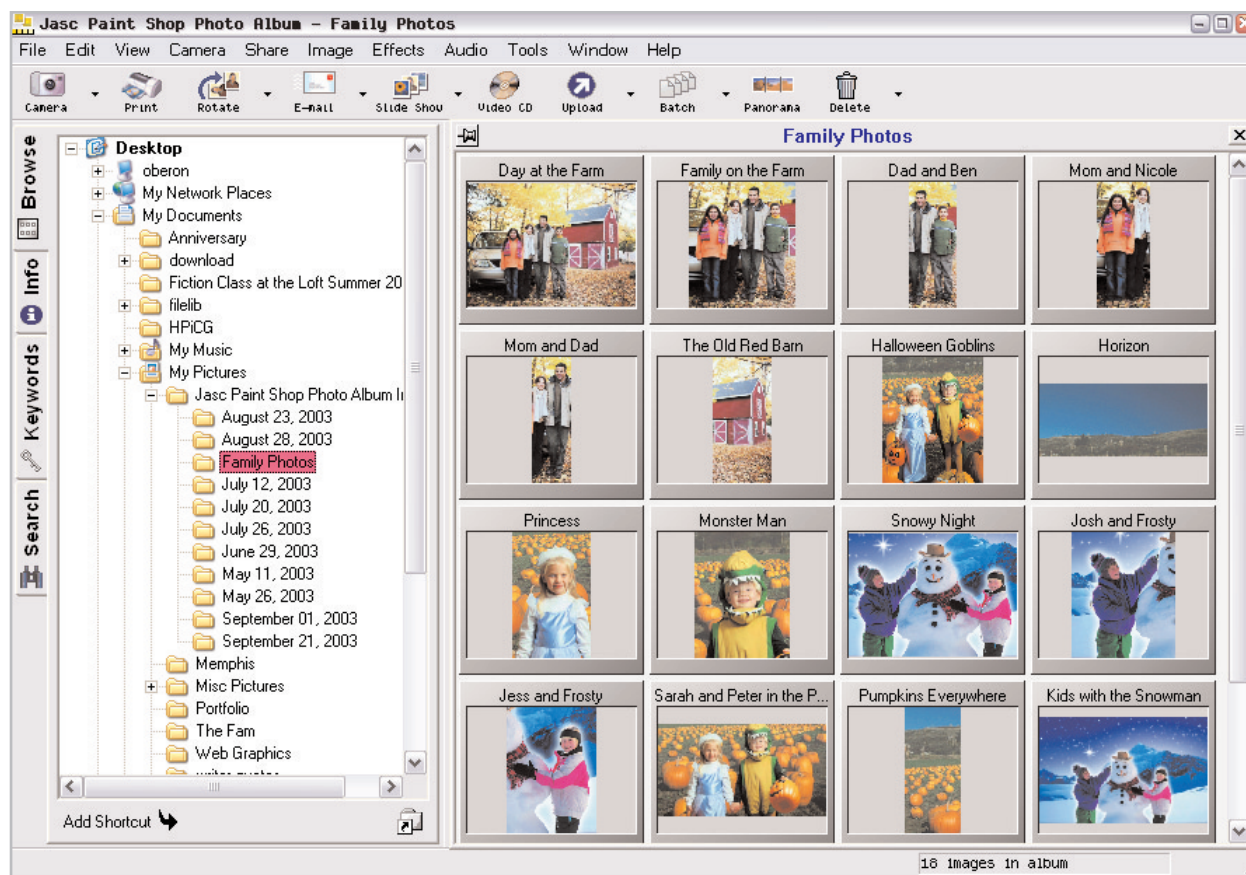


Open the Print Layout Window

1. Choose **Start > Programs > Jasc Software > Jasc Paint Shop Photo Album** or double click the Photo Album Icon on your desktop to open Photo Album.



2. Use the **Browse** tab on the left to navigate to the folder containing the photos you want to print

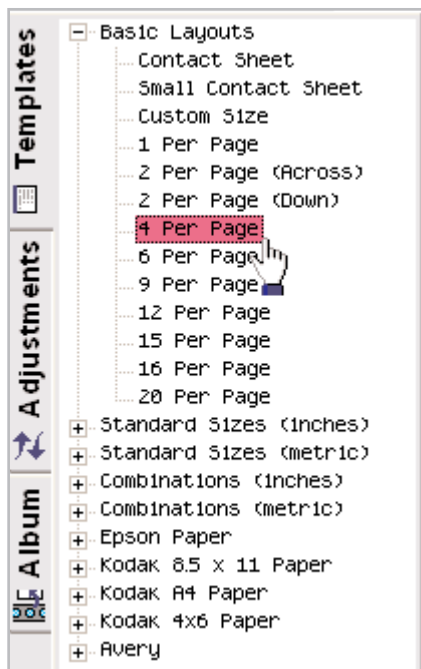


3. Once you have selected the album, click **Print** on the toolbar at the top of the window to open the Print Layout window. There will be three tabs on the left: **Templates**, **Adjustments**, and **Albums**. You'll control the look of your prints using these tabs.



Choose a Print Template

4. To get started you need to choose a template from the **Templates** tab. We're going to demonstrate using the **4 Per Page** template, but you can follow along using the template you like best. On the **Templates** tab, click the template you want to use from the list.

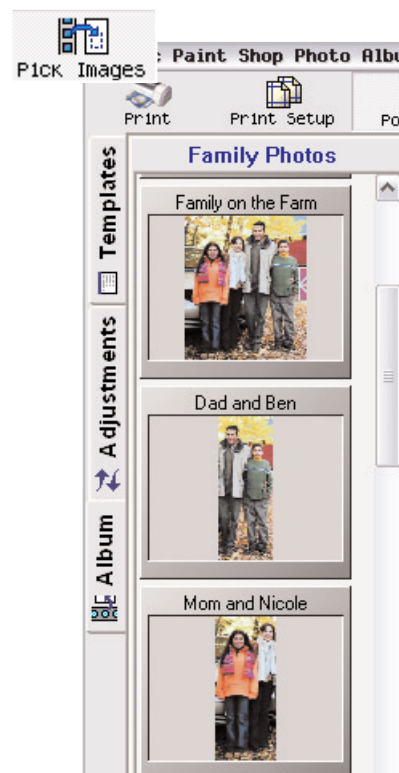


Once you've chosen a template, the right side of the window will contain a white page filled with dotted-line squares (called frames). Each of these frames represents one picture. The template you choose will determine the number of frames on the page.

Note: The next time you open the Print Layout window the last template you used will be displayed. The photos in the selected album will automatically fill the frames in the template.

Place Photos in a Template

5. To place photos in the frames, click **Pick Images** from the toolbar at the top. The photos in the selected album will display on the **Album** tab.



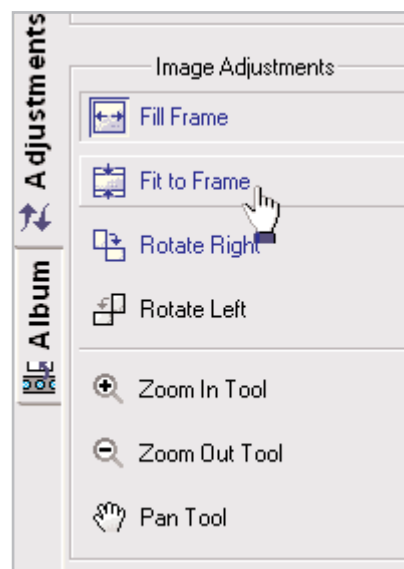
6. Now you can choose which photos you want to print. Just click the photo you want from the **Album** tab and drag it into a frame in the template. If you want multiple prints of the same image, just drag and drop it into each frame.



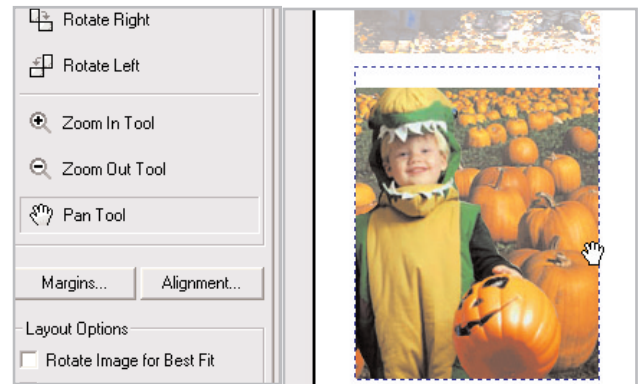
Adjusting Photos in a Template

7. If your photos don't fit into the template as you intended, there's no need to worry. Using the tools on the **Adjustments** tab you can get your prints looking picture perfect.

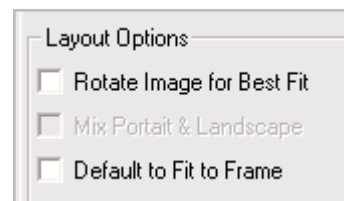
Select the photo you want to adjust and then use these tools to perfect your print layout.



8. Image Adjustments are used on individual photos:
- **Fill/Fit to Frame:** Fills the frame with as much of the selected photo as possible or reduces the photos so the entire photo fits inside the frame.
 - **Rotate Left/Right:** Rotates the image so it displays properly within the frame.
 - **Zoom In/Out:** Allows you to zoom in on a certain portion of your photo or zoom out to capture as much of the photo as you want.
 - **Pan Tool:** Use this to grab the photo and drag it around the frame so you can print out the part of the photo you want.



9. Layout Options are used on the entire page:
- **Rotate Image for Best Fit:** Rotates all the images on the page so they fit within the frames.
 - **Mix Portrait & Landscape:** Allows for a mix of vertical and horizontal photos on a page.
 - **Default to Fit to Frame:** Makes all the photos on a page fit within their frames.



10. Text is used to print titles, captions, or other album information on your page:
- **Page Header:** Adds text to the top of your page. Click the **Page Header** button to change the text that appears there. To print a header on your page, make sure to mark the Page Header box.
 - **Page Footer:** Adds text to the bottom of your page. Click the **Page Footer** button to change the text that appears there. To print a footer on your page, make sure to mark the Page Footer box.



- **Image Label:** Adds text to each image, like a caption. Click the Image Label button to change the text. Labels can be the file name, image title, or description from the **Info** tab. To print a labels on your page, make sure to mark the Image Label box.

Print

11. Once you've got all your photos in the frames just the way you want, and have added any text you'd like, all you need to do is click **Print** on the toolbar. Now you're ready to share your photos with friends and family.



The printing possibilities with Paint Shop Photo Album are endless. With over 40 templates to choose from you can print contact sheets, 5x7s, wallets, and any other photo package you dream up.

