



## Product Guide

- 🔻 Dramatically reduces heat and friction
- 🔻 Reduces wear to extend equipment life
- 🔻 Displace moisture and prevent corrosion
- 🔻 Stable, non-corrosive, non-reportable and environmentally friendly
- 🔻 Lowers energy consumption





ECHO ENGINEERED TECHNOLOGY FOR TODAY'S MINING, MARINE, INDUSTRIAL, CONSTRUCTION, AGRICULTURE, TRANSPORTATION INDUSTRIES AND TOMORROW'S ENVIRONMENT.

# XPL+ Technology

Developed and perfected over decades, XPL+ technology takes lubrication to the next level. Typical lubricants tend to migrate away from heat sources but XPL+ has a strong ionic (+) charge which allows it to bond to metal and other lubricated surfaces even under extreme heat and pressure, giving the lubricants formulated with XPL+ unprecedented film strength and extreme pressure protection.

XPL+ is vegetable-based, stable, non-corrosive, non-reportable and environmentally friendly!



## ADVANTAGES

- Dramatically reduces heat and friction
- Reduces wear to extend equipment life
- Displaces moisture, prevents corrosion
- Lowers energy consumption
- Helps prevent costly down time
- Optimizes equipment efficiency to lower maintenance costs



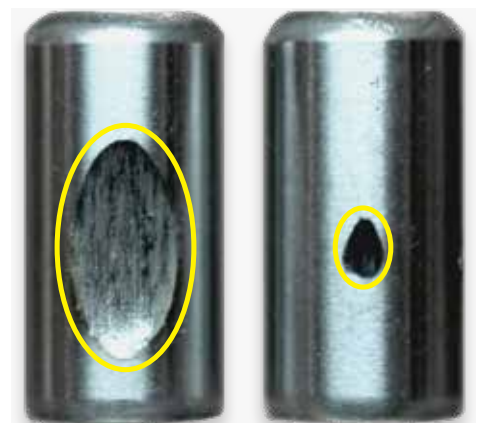
# How it Works

## 50 TIMES MORE EXTREME PRESSURE PERFORMANCE!

In a bench cross-axis friction machine test, bearings are subjected to pressure from a spinning race.

Using regular motor oil without XPL+, the bearing sustains severe damage at only 4,000psi of pressure.

With ProOne's XPL+ technology, there is minimal damage at 200,000psi **...over 50 times the pressure!**



Without XPL+ @ 4,000 PSI    With XPL+ @ 200,000 PSI



ECHO ENGINEERED TECHNOLOGY FOR TODAY'S MINING, MARINE, INDUSTRIAL, CONSTRUCTION, AGRICULTURE, TRANSPORTATION INDUSTRIES AND TOMORROW'S ENVIRONMENT.

## GREASE IS JUST NOT GREASE ANYMORE!

Do you experience and suffer from costly "GREASE" related failures and downtime using these types of "greases" on your heavy duty equipment, forklifts, crushers, screeners, slurry and water pumps, pin and bussing, conveyor systems, open gears, bearings, chains, cables and wire rope operating in harshest mining, quarry, manufacturing and agricultural environments and conditions?

### Due to existing and visible grease related failures:

- Grease melting, leakage or bleeding while operating in ambient and high temperatures
- Water wash out on bearings, hinged pins and bussing, operating machinery and pumps in muds, slurry, moisture and water conditions
- Grease hardening caused by Industry "dusts" contamination (Chrome, coal, asphalt, sand etc.)
- Premature bearing, hinge pins and bussing failures and wear operating under heavy loads and high pressure conditions
- Rusty corroded and stick metal parts caused while operating equipment in chemicals, acids, slurry or water

## STOP SEARCHING FOR OTHER GREASE TO SOLVE YOUR PROBLEMS!

Tested against these types of greases, and confirmed by our existing industry customers - the "proof is in the pudding". Pro-1-One XPL+ EP2 Industrial Grease will solve your "grease" related problems as our XPL+ Technology takes greases to the next level.

XPL+ Grease Technology strong ionic (+) charge are formulated to bond to metal under extreme heat, pressure, high friction, dusts and water applications allowing our customers to benefit from our XPL+ Technology unprecedented film strength and extreme pressure protection while operating equipment.

Pro-1-One's XPL+ EP2 Industrial Grease bottom line benefits and problem solving greases:

- Dramatically reduce heat and friction, preventing grease melting, leakage or bleeding while operating in high temperatures
- Cling and stick to metal under harshest operating conditions (water & dusts) due to the positive (+) ionic charge molecule structure and low water wash out capabilities protecting metal from rusting
- Heavy load carrying capability
- Extreme pressure protection, shear stability, oxidation & corrosion resistant and seal compatibility while protecting all type of metals
- Chlorine Free

### Ideal to use for the following applications:

- Heavy duty Equipment, Crushers & Screeners
- Forklifts & Agricultural equipment
- Hinged pin & bushings
- Wheel bearings
- Open gears
- Wire rope
- Conveyor Systems
- Slurry & Water Pumps
- Plumber block bearings
- Wheel bearings
- Chains
- Cables







ECHO ENGINEERED TECHNOLOGY FOR TODAY'S MINING, MARINE, INDUSTRIAL, CONSTRUCTION, AGRICULTURE, TRANSPORTATION INDUSTRIES AND TOMORROW'S ENVIRONMENT.

# EP-2 Industrial Grease

Extreme Pressure Performance from **-40°C to 324°C!**

Delivers outstanding extreme pressure protection to help maximize equipment life and performance, and help save energy, even under the harshest conditions. And with no harmful additives, this premium grease is environmentally friendly!



## TYPICAL PROPERTIES

|  |                    |
|--|--------------------|
| NLGI Grade   | 2                  |
| Color  | Blue               |
| Thickener  | Calcium Complex    |
| Kinematic viscosity of base oils @40°C (ASTM 445)    | 216 cSt (1000 SUS) |
| Penetration @ 25°C (77°F) (ASTM D-217), mm/10        |                    |
| Worked 60 strokes                                    | 270-295            |
| Mechanical Stability (ASTM D-217) % change from P60  |                    |
| P100,000 strokes                                     | 2.5%               |
| P10,000 strokes with 50% H <sub>2</sub> O            | <6.0%              |
| Dropping Point (ASTM D-2265) °F (°C)                 | +572°F (+300°C)    |
| Oil Separation (ASTM D-1742) -24 hours @ 25°C (77°F) | 0.17               |
| Shell Roll Stability (ASTM D-1831)                   | <4.0%              |
| Oxidation Stability (ASTM D-942) psi drop/500 hours  | 41.4kpa            |
| Oxidation Bearing Life (ASTM D-3527)                 | 200 hours          |
| 4-Ball Wear Test (ASTM D-2266)                       |                    |
| mm scar, 40kg, 1200 RPM, 24°C, 1H                    | 0.42mm             |
| 4-Ball EP test (ASTM D-2596) LWI, kg                 | >75                |
| Weld Load, kgf                                       | 600                |
| Timken OK Load (ASTM D-2509) lbs/kg                  | 60/27              |
| Rust test (ASTM D-1743)                              | Pass               |
| Copper Corrosion test (ASTM D-130)                   | Pass/1b            |
| Salt Fog Spray (ASTM B-117) hours to failure         | >1000 hours        |
| Water Washout (ASTM D-1264) @ 80°C, % loss           | <2.5%              |
| Wheel bearing leakage grams (ASTM D-1263)            |                    |
| Modified @ 163°C (325°F)                             | 0.4                |
| Base Oil Characteristics                             |                    |
| Viscosity SUS @ 100°F (38°C)                         | 1100               |
| Viscosity SUS @ 210°F (99°C)                         | 85                 |
| Pour Point, °C                                       | -15°C              |
| V.I. Min   | 95                 |

## ADVANTAGES

- Extreme pressure protection
- Heavy load carrying capability
- Shear stability
- Oxidation resistant
- Corrosion resistant
- Cling capability
- Seal compatibility
- Extreme temperature range

## IDEAL FOR EQUIPMENT

- Industrial
- Manufacturing
- Commercial
- Marine
- Automotive
- Mining
- Construction
- Agriculture

| ProOne# | Size            | Case Pack |
|---------|-----------------|-----------|
| 46014   | 400g. Cartridge | 12        |
| 46035   | 15.9 kg. Pail   | 1         |
| 46120   | 54.4 kg. Pail   | 1         |
| 46400   | 181.4 kg. Drum  | 1         |



ECHO ENGINEERED TECHNOLOGY FOR TODAY'S MINING, MARINE, INDUSTRIAL, CONSTRUCTION, AGRICULTURE, TRANSPORTATION INDUSTRIES AND TOMORROW'S ENVIRONMENT.

# EP-1 Industrial Synthetic Grease

Extreme Pressure Performance from **-40°C to 324°C!**

Heavy duty full synthetic NLGI 1 grade industrial grease designed for extreme temperature conditions or where low and high speed bearings share the same lubricant. Delivers increased parts life, reduced downtime and outstanding protection in the harshest EP, temperature or corrosive environments.



## TYPICAL PROPERTIES

|   |                            |
|---|----------------------------|
| NLGI Grade  | 1                          |
| Color   | Brown                      |
| Thickener   | Calcium Complex            |
| Operating temperature range                         | -51°C to 343°C             |
| Kinematic viscosity of base oils @40oC (ASTM 445)   | 68 cSt (220 SUS)           |
| Penetration @ 25oC [77oF] (ASTM D-217), mm/10       |                            |
| Worked 60 strokes                                   | 310-340                    |
| Mechanical Stability (ASTM D-217) % change from P60 |                            |
| P100,000 strokes                                    | 2.3%                       |
| P10,000 strokes with 50% H2O                        | <2.0%                      |
| Dropping Point (ASTM D-2265) °C                     | 290°C                      |
| Shell Roll Stability (ASTM D-1831)                  | <4.0%                      |
| Oxidation Stability (ASTM D-942)                    | psi drop/500 hours 6.0 lbs |
| Oxidation Bearing Life (ASTM D-3527)                | 200 hours                  |
| 4-Ball Wear Test (ASTM D-2266)                      |                            |
| mm scar, 40kg, 1200 RPM, 75oF, 1hr                  | 0.42mm                     |
| 4-Ball EP test (ASTM D-2596)                        |                            |
| LWI, kg   | >75                        |
| Weld Load, kgf                                      | 500                        |
| Timken OK Load (ASTM D-2509) lbs/kg                 | 60/27                      |
| Rust test (ASTM D 1743)                             | Pass                       |
| Copper Corrosion test (ASTM D-130)                  | Pass/1b                    |
| Salt Fog Spray (ASTM B-117) hours to failure        | >1000 hours                |
| Water Washout (ASTM D-1264)                         | @ 80°C, % loss <2.2%       |
| Base Oil Characteristics                            |                            |
| Viscosity SUS @ 37°C                                | 220                        |
| Viscosity SUS @ 98°C                                | 62.4                       |
| V.I. Min  | 136                        |

## ADVANTAGES

- Pumpable
- Operates from
- Extreme pressure protection
- Heavy load carrying ability
- Excellent shear stability
- Highly resistant to water wash
- Excellent corrosion resistance
- Cling capability

## IDEAL FOR EQUIPMENT

- Industrial
- Manufacturing
- Commercial
- Marine
- Automotive
- Mining
- Construction
- Agriculture

| ProOne# | Size            | Case Pack |
|---------|-----------------|-----------|
| 47014   | 400g. Cartridge | 12        |
| 47035   | 15.9 kg. Pail   | 1         |
| 47120   | 54.4 kg. Pail   | 1         |
| 47400   | 181.4 kg. Drum  | 1         |



ECHO ENGINEERED TECHNOLOGY FOR TODAY'S MINING, MARINE, INDUSTRIAL, CONSTRUCTION, AGRICULTURE, TRANSPORTATION INDUSTRIES AND TOMORROW'S ENVIRONMENT.

# XPL-101 Penetrating Lubricant

If it rolls, rubs, slides, rusts, corrodes, seizes or collects moisture...USE **XPL-101!**

No other penetrating lubricant offers XPL+ lubrication technology which protects metal surfaces from heat, friction, moisture and the elements, and easily loosens rusted or sticky mechanisms. We guarantee that once you use this environmentally friendly formula you will never settle for anything else.

## BENEFITS

- Extreme performance film strength
- 50 times more powerful than typical spray lubricants
- Penetrates and bonds to metal
- Reduces friction and heat
- Stops squeaks and reduces noise
- Frees sticky, corroded rust parts
- Protects metal from rusting
- Displaces water & moisture
- Non-toxic, environmentally friendly



Approved by Ford  
TOX# 186095 (Aerosol) and #186018 (Spray)

## FOR USE IN:

- Air Tools
- Bolts
- Bushings
- Chains
- Cables
- Electrical Terminals
- Hand Tools
- Hinges
- Ignition Wires
- Levers
- Linkages
- Locks
- Nuts
- Pulleys
- Kitchen Tools
- Wheels
- Bearings
- Fasteners
- Casters
- Knobs
- Pistons
- Gears
- Valve Train
- Oil Pump
- Latches
- Conveyors
- Drill Bits
- O-Rings
- Fishing Reels
- Springs
- Firearms
- Stamping Tools
- Rollers
- Sliding Doors
- Tumblers
- Mold Release
- Pivot Joints
- Rusty Metal
- Spark Plugs
- Ignition Wires
- Screw Jacks
- EGR Valves

| ProOne# | Size             | Case Pack |
|---------|------------------|-----------|
| 40004   | 118 ml. aerosol  | 12        |
| 40012   | 354 ml. aerosol  | 12        |
| 40022   | 350 ml. trigger  | 6         |
| 40001   | 3.78 liter       | 4         |
| 40005   | 18.93 liter pail | 1         |
| 40055   | 208 liter drum   | 1         |



ECHO ENGINEERED TECHNOLOGY FOR TODAY'S MINING, MARINE, INDUSTRIAL, CONSTRUCTION, AGRICULTURE, TRANSPORTATION INDUSTRIES AND TOMORROW'S ENVIRONMENT.

# Rust Pro™ Rust & Corrosion Inhibitor

## Unsurpassed, Protection Against Rust & Oxidation



ProOne Lubricants offers Rust Pro™ Rust Inhibitor capable of providing up to 5 years protection in indoor storage and 2-3 years protection outdoors. For carbon steel or any exposed metal or painted surface in high-salt environments. Proven and used by major oil & gas companies for their stack-out programs and pipe protection.

Rust Pro is an oil-dispersed, thixotropic, all-purpose rust preventive formulated to provide unsurpassed long-term protection against rust and oxidation. Because of its thixotropic characteristics, Rust Pro has the ability to become fluid with agitation enabling the residual film to be self-healing.

UNTREATED VS TREATED



3/16 inch bare steel. Right side brushed with Rust Pro and wiped off. Steel exposed to open air (67°F, 63% humidity) and muriatic acid for 24 hours.

### KEY PERFORMANCE BENEFITS

- Long-term protection for ferrous and nonferrous parts for up to 5 years indoors and 2-3 outdoors.
- Can be sprayed or brushed for even coating of the surfaces.
- Once on the surface of the part, Rust Pro becomes a semi solid reducing drips and runoff.
- Superior clean-ability - it can be easily removed with an alkaline cleaner.

### USE RUST PRO

- On parts exposed to salt spray environments.
- When parts will be subjected to long term storage or transportation.
- When maximum protection is required against corrosion.

### APPLICATION

Apply undiluted for maximum protection. The product can be applied by airless spray or dip. Target application film thickness is 2ml. When dipping, the tank should be agitated so that the product becomes fluid and completely coats all surfaces.

- Airless sprayer - 450 sq. ft. per gallon
- Paint roller - 600 sq. ft. per gallon
- Brush - 650 sq. ft. per gallon

### CHARACTERISTICS

|                      |                                  |
|----------------------|----------------------------------|
| Appearance of Fluid  | Hazy Blue Translucent Semi Solid |
| Odor                 | Trace of Petroleum               |
| Viscosity cSt @ 40°C | Semi Solid                       |
| Pour Point           | 150°F                            |
| Specific Gravity     | .880-.992/7.5                    |

| ProOne# | Size           | Case Pack |
|---------|----------------|-----------|
| 41001   | 1 gallon/3.78L | 4         |
| 41005   | 5 gallon/18.9L | 1         |
| 41055   | 55 gallon/208L | 1         |





ECHO ENGINEERED TECHNOLOGY FOR TODAY'S MINING, MARINE, INDUSTRIAL, CONSTRUCTION, AGRICULTURE, TRANSPORTATION INDUSTRIES AND TOMORROW'S ENVIRONMENT.

# Heavy Duty Oil Stabilizer

## If it Smokes, Leaks, or Needs Extra Protection

This high performance heavy-duty formula is designed to fortify your oil to provide extra protection and enhance the performance of your engine or gearbox. It is formulated with XPL+ Technology which offers 50 times more film strength protection other stabilizers can't provide. It provides exceptional results in engines that are burning, leaking, or using oil.



### DIRECTIONS FOR USE

- Diesel engines - 20% by volume
- Marine engines - 20% by volume
- Gas engines - 20% by volume
- Badly worn engines - 30% by volume
- Commercial/ Industrial - 20% by volume
- Motorcycle - 20% by volume
- Wet clutch - 10% by volume
- Manual transmissions - 20% by volume
- Differentials & gear boxes - 20% by volume



### ADVANTAGES

- Extreme pressure protection
- Slows oil burning & oil leaks
- Slows blow-by
- Helps restore compression
- Improves performance
- Easier starting at all temperatures
- Increases oil pressure
- Extends engine life
- Stops thermal breakdown
- Extends oil change intervals 25% to 50%

### APPLICATIONS

- Gas or diesel engines
- High mileage engines
- Racing engines
- Hot Rods
- Heavy duty trucking
- Agriculture
- Marine
- Industrial
- Motorcycle
- Lawnmowers
- Off-road vehicles



| ProOne# | Size         | Case Pack |
|---------|--------------|-----------|
| 13032   | 32oz/946mL   | 12        |
| 13001   | 1 gal/3.785L | 1         |
| 13005   | 120 lb. Pail | 1         |





ECHO ENGINEERED TECHNOLOGY FOR TODAY'S MINING, MARINE, INDUSTRIAL, CONSTRUCTION, AGRICULTURE, TRANSPORTATION INDUSTRIES AND TOMORROW'S ENVIRONMENT.

# Hydraulic Treatment

## Unsurpassed Energy Saving Lubrication Technology

With advanced XPL+ technology, ProOne Hydraulic Treatment bonds to metal and provides superior performance, especially at points of extreme pressure, to help keep hydraulic systems running at peak efficiency, which means less heat, less down time and lower operating costs.



### 🔥 DILUTION RATIOS:

- Hydraulic Systems: 10% by volume
- Wet bath Clutches, Brakes: 5% by volume
- Automatic Transmissions: 2% by volume

### 🔥 BOTTOM LINE BENEFITS:

- Lowers friction & operating temperatures
- Exceptional anti-wear technology
- Compatible with all hydraulic oils
- Reduces electrolysis up to 94%
- Displaces moisture
- Prevents oxidation & corrosion
- Helps extend component life
- Reduces power input
- Reduces noise levels
- Helps to protect & condition seals
- Optimum run times...less down time
- Reduces heavy line pulsing

### 🔥 APPLICATIONS:

- Hydraulic Systems
- Power transmission equipment
- Power steering units
- Automatic transmissions
- injection molding machines
- Railroad equipment
- Refineries & oil field equipment
- Paper and pulp mills
- Mining & smelter equipment



| ProOne# | Size                 | Case Pack |
|---------|----------------------|-----------|
| 22001   | 1 gallon/3.785L      | 4         |
| 22005   | 5 gallon/ 18.9L Pail | 1         |
| 22055   | 55 gallon/ 208L Drum | 1         |



ECHO ENGINEERED TECHNOLOGY FOR TODAY'S MINING, MARINE, INDUSTRIAL, CONSTRUCTION, AGRICULTURE, TRANSPORTATION INDUSTRIES AND TOMORROW'S ENVIRONMENT.

# Anti-Microbe Fuel Conditioner

**SUPER CONCENTRATED**  
1 gallon treats  
10,000 gallons of fuel

## 2-hour Kill for Microbial Growth!

Ideal for marine applications and other fuel storage tanks that have microbial growth or algae. Formulated to attack and kill a wide range of microbial growth, and requires only 2 hours to achieve a 100% kill.

Once the growth problem is brought under control, the product is formulated to continue to inhibit further microbial growth.

### Effective against:

#### Fungi



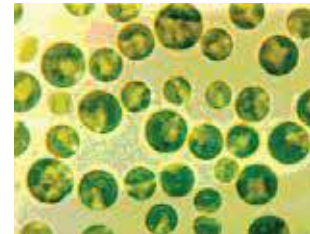
- Aspergillus foetidus
- Aspergillus niger
- Aspergillus oryzae
- Aureobasidium pullulans
- Chaetomium globosum
- Fusarium oxysporum
- Giliocladium fimbriatum
- Mucor rouxii
- Penicillium chrysogenum
- Penicillium pinophilum

#### Bacteria



- B.subtilis
- D.desulfuricans
- E.aerogenes
- E.coli
- P.aeruginosa
- R.rubra
- S. aureus

#### Algae



- Chlorella pyrenoidosa
- Oscillatoria proliferia
- Scenedesmus obliquus
- Phorimidium inundatum
- Chlorococcum hypnosporum

- Treat at 1:10,000. Most effective when treated with addition of new fuel to the tank.
- Recommended treatment twice per year.
- Best results obtained with ongoing use of ProOne Fuel Maximizer.
- Shipping info: DOT: UN2922 Corrosive Liquid NOS Class 8 PGIII.

| ProOne # | SIZE             | CASE PACK |
|----------|------------------|-----------|
| 33001    | 1 gal/3.785L     | 4         |
| 33005    | 5 gal/18.9L pail | 1         |
| 33055    | 55 gal/208L drum | 1         |



ECHO ENGINEERED TECHNOLOGY FOR TODAY'S MINING, MARINE, INDUSTRIAL, CONSTRUCTION, AGRICULTURE, TRANSPORTATION INDUSTRIES AND TOMORROW'S ENVIRONMENT.

# Fuel Maximizer

## Advanced Fuel Conditioning Catalyst

ProOne's Fuel Maximizer is a super-concentrated fuel catalyst/conditioner that liberates fuel's chemical energy and addresses fuel problems. This allows more oxygen and helps create better performance, significantly reduce fuel consumption and dramatically lower emissions even under high loads. It will also clean carbon and soot, keeping parts clean and reducing downtime caused by carbon build up.



### BOTTOM LINE BENEFITS

- Improves engine performance
- Improvement in fuel economy
- Virtually eliminates opacity
- Reduces ash formation
- Adds lubricity to diesel fuels
- Prevents carbon buildup
- Increases BTU's
- Cleans fuel system and injectors
- No mixing-blends instantly

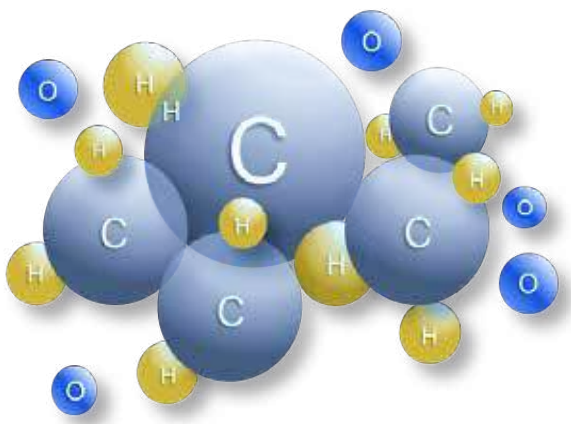
**TREATMENT RATIO:**  
1:4000 or 1oz per 30 gallons.  
Double dose first tank. Add at every fill up.

| ProOne# | Size                 | Case Pack |
|---------|----------------------|-----------|
| 32010   | 10oz/295ml           | 12        |
| 32001   | 1 Gallon/3.78L       | 4         |
| 32055   | 55 Gallon Drum /208L | 1         |

### HOW IT WORKS

#### BEFORE

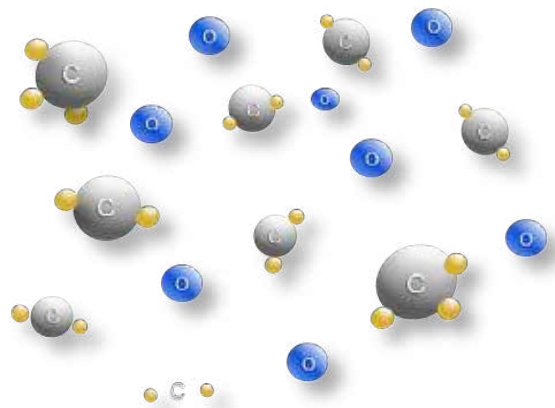
Fuels chemical energy is stored in a Hydrocarbon. In this state Hydrocarbons do not burn completely resulting in carbon, soot, and harmful emissions.



Oxygen is required to create efficient combustion. However, its ability to perform its function is diminished by not being accessible resulting in unburned hydrocarbons.

#### AFTER

Fuel Maximizer is a catalyst that breaks apart large particulates, accelerating the chemical reaction of fuel thus liberating its chemical energy.



Makes Oxygen available to burn more completely thus producing a more efficient burn.



ECHO ENGINEERED TECHNOLOGY FOR TODAY'S MINING, MARINE, INDUSTRIAL, CONSTRUCTION, AGRICULTURE, TRANSPORTATION INDUSTRIES AND TOMORROW'S ENVIRONMENT.

## Product Applications (A-M)

| Product                    | Engine Life Treatment | Heavy Duty Oil Stabilizer | Super Duty Gear Oil | Industrial Oil Concentrate | Hydraulic Treatment | Greases     | XPL-101 Penetrating Lubricant |
|----------------------------|-----------------------|---------------------------|---------------------|----------------------------|---------------------|-------------|-------------------------------|
| DILUTION RATIO             | 10% by Volume         | 20% by Volume             | Use at 100%         | 10% by Volume              | 2-10% by Volume     | Use at 100% | Use at 100%                   |
| Air tools                  |                       |                           |                     |                            |                     |             | 1                             |
| Ball & U-Joints            |                       |                           |                     |                            |                     | 1           |                               |
| Bearing zerk fittings      |                       |                           |                     |                            |                     | 1           | 1                             |
| Bearings                   |                       | 1                         | 1                   | 1                          |                     | 1           | 1                             |
| Bolts                      |                       |                           |                     |                            |                     |             | 1                             |
| Boring                     |                       |                           |                     |                            |                     | 1           | 1                             |
| Bushings                   |                       | 1                         |                     | 1                          |                     |             | 1                             |
| Cables                     |                       |                           |                     | 1                          |                     | 1           | 1                             |
| Casters                    |                       |                           |                     |                            |                     | 1           | 1                             |
| Chains                     |                       |                           |                     |                            |                     | 1           | 1                             |
| Chassis                    |                       |                           |                     |                            |                     | 1           | 1                             |
| Compressors                | 1                     |                           |                     | 1                          |                     |             |                               |
| Cold heading               |                       |                           |                     | 1                          |                     | 1           |                               |
| Conveyors                  |                       |                           |                     | 1                          |                     | 1           | 1                             |
| Diesel engines             | 1                     | 1                         |                     |                            |                     |             |                               |
| Drilling                   |                       |                           |                     |                            |                     |             | 1                             |
| Electrical connections     |                       |                           |                     |                            |                     | 1           | 1                             |
| Fifth wheels               |                       |                           |                     |                            |                     | 1           | 1                             |
| Firearms                   |                       |                           |                     |                            |                     |             | 1                             |
| Fishing reels              |                       |                           |                     |                            |                     |             | 1                             |
| Gasoline engines           | 1                     | 1                         |                     |                            |                     |             |                               |
| Gear boxes                 |                       |                           | 1                   | 15% by volume              |                     | 1           |                               |
| Gear hobbing               |                       | 1                         |                     | 1                          |                     |             |                               |
| Gears                      |                       | 1                         | 1                   | 1                          |                     | 1           | 1                             |
| Generators                 | 1                     |                           |                     |                            |                     |             |                               |
| Hand Tools                 |                       |                           |                     |                            |                     |             | 1                             |
| Hinges                     |                       |                           |                     |                            |                     | 1           | 1                             |
| Hydraulic systems          |                       |                           |                     |                            | 10% by volume       |             |                               |
| Ignition wires             |                       |                           |                     |                            |                     |             | 1                             |
| Injection molding          |                       |                           |                     |                            | 10% by volume       |             |                               |
| Levers                     |                       |                           |                     |                            |                     | 1           | 1                             |
| Linkages                   |                       |                           |                     |                            |                     | 1           | 1                             |
| Lock                       |                       |                           |                     |                            |                     | 1           | 1                             |
| Marine engines             | 1                     | 1                         |                     |                            |                     |             |                               |
| Mining/smelter equip.      |                       |                           |                     |                            |                     |             |                               |
| Misting, dripping, spindle |                       |                           |                     |                            |                     |             | 1                             |





ECHO ENGINEERED TECHNOLOGY FOR TODAY'S MINING, MARINE, INDUSTRIAL, CONSTRUCTION, AGRICULTURE, TRANSPORTATION INDUSTRIES AND TOMORROW'S ENVIRONMENT.

## Product Applications (M-Z)

| Product                   | Engine Life Treatment | Heavy Duty Oil Stabilizer | Super Duty Gear Oil | Industrial Oil Concentrate | Hydraulic Treatment | Greases     | XPL-101 Penetrating Lubricant |
|---------------------------|-----------------------|---------------------------|---------------------|----------------------------|---------------------|-------------|-------------------------------|
| DILUTION RATIO            | 10% by Volume         | 20% by Volume             | Use at 100%         | 10% by Volume              | 2-10% by Volume     | Use at 100% | Use at 100%                   |
| Motor bearings            |                       |                           |                     | 🔥                          |                     | 🔥           | 🔥                             |
| Nuts                      |                       |                           |                     | 🔥                          |                     |             | 🔥                             |
| Paper/pulp mills          |                       |                           |                     |                            |                     | 🔥           | 🔥                             |
| Pins & buckets            |                       |                           |                     |                            |                     | 🔥           | 🔥                             |
| Pivot points              |                       |                           |                     |                            |                     | 🔥           |                               |
| Pneumatic systems         |                       |                           |                     |                            |                     |             | 🔥                             |
| Power transmissions       |                       |                           |                     | 🔥                          | 10% by volume       |             |                               |
| Precision bearings        |                       |                           |                     |                            |                     | 🔥           | 🔥                             |
| Pulleys                   |                       |                           |                     |                            |                     | 🔥           | 🔥                             |
| Pumps                     |                       |                           |                     | 🔥                          | 10% by volume       |             |                               |
| Parts cleaning            |                       |                           |                     |                            |                     |             | 🔥                             |
| Reaming                   |                       |                           |                     |                            |                     |             | 🔥                             |
| Roll threading            |                       |                           |                     |                            | 10% by volume       |             |                               |
| Roller bearings           |                       |                           |                     |                            |                     | 🔥           | 🔥                             |
| Rollers                   |                       |                           |                     |                            |                     | 🔥           | 🔥                             |
| Screw jacks               |                       |                           |                     | 🔥                          | 10% by volume       | 🔥           | 🔥                             |
| Shackles & king pins      |                       |                           |                     |                            |                     | 🔥           |                               |
| Sliding mechanisms        |                       |                           |                     |                            |                     |             | 🔥                             |
| Slitting                  |                       |                           |                     | 15% by volume              |                     |             | 🔥                             |
| Sports equipment          |                       |                           |                     |                            |                     |             | 🔥                             |
| Springs                   |                       |                           |                     |                            |                     | 🔥           |                               |
| Stamping tools            |                       |                           |                     |                            |                     |             | 🔥                             |
| Tapping                   |                       |                           |                     |                            |                     |             | 🔥                             |
| Thread cutting            |                       |                           |                     | 🔥                          |                     |             |                               |
| Tracks                    |                       |                           |                     |                            |                     | 🔥           | 🔥                             |
| Trailers                  |                       |                           |                     |                            |                     | 🔥           | 🔥                             |
| Transmissions (automatic) |                       |                           |                     |                            | 2% by volume        |             |                               |
| Transmissions (manual)    |                       | 🔥                         | 🔥                   |                            |                     |             |                               |
| Tumblers                  |                       |                           |                     |                            |                     |             | 🔥                             |
| Valves                    |                       |                           |                     |                            |                     |             | 🔥                             |
| Wet bath clutches         |                       |                           |                     |                            | 5% by volume        |             |                               |
| Wheel bearings            |                       |                           |                     |                            |                     | 🔥           | 🔥                             |
| Wheels                    |                       |                           |                     |                            |                     | 🔥           | 🔥                             |
| Winches                   |                       |                           |                     |                            |                     |             | 🔥                             |
| Wind turbine              |                       | 🔥                         | 🔥                   |                            |                     |             |                               |
| Wiring                    |                       |                           |                     |                            |                     |             | 🔥                             |



1 Boundary Road, Box Hill, NSW 2765

**Office:** 130 000 PRO1 (130 000 7761) | **Email:** [sales@pro-one.net.au](mailto:sales@pro-one.net.au) | **Website:** [www.pro-one.net.au](http://www.pro-one.net.au)

---

**Lewis MacLeod | Sales Manager**

**Mobile:** 0430 740 977 | **Email:** [lewis@pro-one.net.au](mailto:lewis@pro-one.net.au)