

Loudspeakers *Plus*

Lavoce
I T A L I A N A

2018

CELESTION

18
EIGHTEEN
SOUND

EMINENCE

Lavoce
ITALIANA

CELESTION

18
EIGHTEEN
SOUND

EMINENCE

EV

JBL

RA

TRINITY

MACKIE

NEUTRIK

B-52
SPEAKERS

faital
PRO

QSC
AUDIO

Pro Audio Speakers, Guitar & Bass Speakers



LIVE OR IN THE STUDIO

*Every Eminence product is designed to meet the most important standards we know – **YOURS.***



From dialing a sound in, to rocking it out, for over 50 years
Eminence has been the leading choice in audio applications worldwide.

LOUDSPEAKERS | COMPRESSION DRIVERS | CROSSOVERS | HORN FLARES | ENCLOSURE DESIGN SOFTWARE

Proudly designed and assembled in the USA.

EMINENCE.COM   

LoudspeakersPlus Catalog 2018

Office: P.O. Box 1005 • Palatine, IL 60078-1005 • Tel: 866.963.0733 • Fax: 847.963.0713
 Web: www.loudspeakersplus.com • E-mail: mail@loudspeakersplus.com
 Warehouse/Showroom: 450 S. Spruce St., Unit G, Manteno, IL 60950
 Phone: 815.468.6801 • FAX: 815.963.0715 • Email: service@loudspeakersplus.com



LoudspeakersPlus



Terms and Conditions:

Payment Terms:

- Pre-payment by cashier's check or money order.
- COD (via UPS) by cashier's check or money order.
- Company check upon credit approval.
- A \$35 service charge will be applied for any NSF checks.

Shipping and Handling:

- All orders shipped via UPS Ground unless otherwise specified.
- UPS Red (overnight), Blue (second day) and Orange (3 day) also available.
- U.S. Mail upon request only.
- A \$5 service charge will be applied to each individual order.

Minimum Order:

- \$50; orders below \$50 subject to a \$10 service charge.

Warranties:

- Warranties vary for each product line. Please call for details.

Product Returns:

- Returns processed only with a valid Return Authorization Number issued by LoudspeakersPlus, no exceptions.
- All returns require pre-paid, insured freight; no COD or Collect shipments will be accepted for returns.
- Items ordered in error will be subject to a 15% restocking charge. Parts must be returned in original package.
- Any items received damaged must be claimed within 15 days.

18 Sound

High power woofers, HF horns and compression drivers.....24-27

Alto

Replacement speakers and diaphragms33

Atlas

High power compression drivers.....33

B-52

High power woofers, compression drivers and replacement diaphragms33

Behringer

Replacement speakers and diaphragms33

Celestion

Modern, vintage and alnico guitar & bass speakers; pro audio speakers and HF drivers..... 19-24

EAW

Replacement speakers and diaphragms34

Electro-Voice

High power woofers, replacement diaphragms & recone kits.....32

Eminence Speakers

Economical mid-performance and high power woofers, guitar speakers, coaxials, compression drivers, tweeters, horns, crossovers, replacement diaphragms & recone kits..... 10-18

Faital Pro

High power woofers and compression drivers, tweeters, horns30-31

JBL

Replacement high frequency diaphragms.....32

LaVoce

High power woofers and compression drivers, tweeters, horns 8-9

LoudspeakersPlus

Replacement diaphragms & accessories..... 4-5

Mackie

Replacement high frequency diaphragms, speakers and drivers.....28-29

Neutrik USA

XLR, Speakon, 1/4" audio connectors and banana plugs.....34

P Audio

High power woofers, compression drivers, speaker systems, replacement diaphragms & recone kits..... 6-7

Peavey

High power woofers, compression drivers, replacement diaphragms & recone kits.....34

QSC

Replacement speakers and diaphragms34

RCF

High power woofers, replacement diaphragms & recone kits.....35

Yorkville

High power woofers, replacement diaphragms.....35

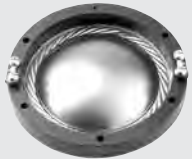
Replacement Diaphragms



PHT8RD
Phenolic replacement diaphragm fits Foster N30, 025H30, 025H27, H025N30, FT300H, PAS, Carvin, Yamaha, SWR, Crate, Peavey and others, 8 ohm.



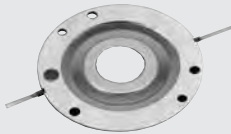
PHT8LRD
H025 Cerwin Vega diaphragm, fits LK670 STS/Sound Tech models, 1" phenolic dome for V30, V35, PD18, etc. 8 ohm



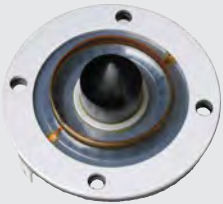
RD-1072
Titanium replacement, fits Altec 288 & 290, and others, 8 or 16 ohm, 2.75" voice coil.



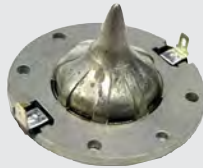
RD-1205
Titanium replacement, fits JBL super tweeters and others, 8 ohm, 1.75" voice coil.



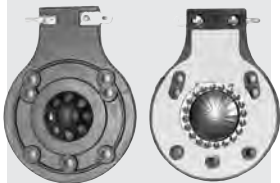
RD-2404
Titanium replacement, fits JBL 2404 & 2405 and others, 8 ohm, 1.75" voice coil.



RD-2406
The Loudspeakers Plus RD2406 compares favorably to the JBL D8R2406 Replacement Annular / Ring Radiator Diaphragm Kit. This annular / ring radiator diaphragm kit fits the JBL 2406H compression driver to deliver smooth, extended high frequency output. Fits JBL M Pro 412, 415



RD-2408
Mylar replacement, fits JBL 2408H and others, 8 ohm, 1.75" voice coil. Fits most JBL MRX cabinets



RD-2412
These replacement diaphragms have the same style titanium domes, voice coils, and Kapton formers as original JBL diaphragms. This after market diaphragm is made to JBL 2412H-1 specifications and fits the 2412 Series of drivers: 2412, 2412H, 2412H-8, 2412-8, 2412-1, 2412H-1, 2412H-1-8, Sound Factor Series, SF-15, SR25, SR-25, JRX Series, JRX100, JRX112, JRX112M, JRX112MI, JRX115, JRX115I, JRX-100, JRX-112M, JRX-112MI, JRX-115, JRX-115I, TR Series, MPro Series, TR125, TR-225, MP-215, Eon Power15, Eon1500, Eon Power10, JBL M Pro 212, 215, 225 & 410 and many more! Titanium replacement, 8 ohms, 1" voice coil.



RD-2416
Titanium replacement, fits JBL 2416 and JBL Series "MR" cabinets, 2417, 8 ohm, 1.75" voice coil.

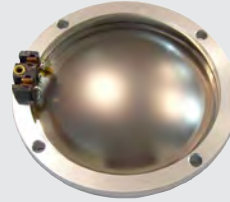
Replacement Diaphragms (Con't.)



RD-2418
Titanium replacement, fits JBL 2418, X-Tealth and JBL Series "EON" cabinets, 8 ohm, 1.75" voice coil.



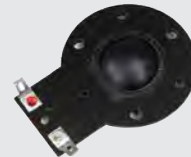
RD-2425
Titanium replacement, fits JBL 2425, JBL 2426, JBL 2427H (8 ohm), JBL 2427J (16 ohm), Altec 802, 804, 806, 807, 808, 902, 904, 908, 909 and others, 8 or 16 ohms, 1.75" voice coil.



RD-2431
Titanium replacement, fits JBL 2431H, 8 ohms, 3.0" voice coil.



RD-2446
Titanium replacement, fits CD-2445, JBL 2445, JBL 2446, 375, 2440, 2441, 2447, 2450, 2451, Peavey 44T, 44XT and others, 8 or 16 ohms, 4" voice coil. Positive terminal is blue dot.



RD-3910D
Replacement diaphragm for Foster, Vega, Klipsch, Pyle, and other high frequency drivers including Alto HG00081 1"-0811.



RDMMD75
Replacement Diaphragm for EAW* / B&C Models: DM-5001, CD-5001, DM-5002, CD5002, DM-5003, DM5003, CD-5003, DM-5005, CD-5005, DE-75-8, MMD75-8, MMD75TN, DE75TN, DE82TN, DE-85-TN, DE72TN, also fits EAW CD3512 and DE72-8 8 and 16 ohm.



RDV21
Phenolic replacement for Jensen/Leslie V21 driver, 16 ohm

Rolling Hardware Kit



Now make any cabinet a rolling one with our convenient **Rolling Hardware Kit**. Takes just minutes to install but it will save your back every time!

RHKIT- Includes retractable handle, stationary handle/leg, and two heavy duty casters. (Speaker not included.)



Compact 4.3 Speaker System



Power Rating: 50W RMS • Frequency Response: 80-18kHz • Sensitivity: 85db • Impedance: 8 ohms • LF Driver: 4.0" • HF Driver: 1" soft dome tweeter • Cabinet: High-impact polycarbonate • Grill: Powder-coated steel • Connectors: Binding posts • Mounting Hardware: "U" bracket mounting • Dimensions: 9.00" (230mm) H x 6.01" (157mm) W x 6.15" (148mm) D • Weight: 5.2 lbs. each/2.4kg each • Color: Black or white

Comes with Multi-Tap Transformer

A-30FT Speaker System



• Power Rating: 30W RMS • Frequency Response: 100-20kHz • Sensitivity: 85db • Impedance: 8 ohms • LF Driver: PA30F, 4.5", waterproof, stamped frame, 1"VC, rubber surround • HF Driver: PHT30F, 1" soft dome • Cabinet: Die cast aluminum • Grill: Black or white powder-coated steel • Connectors: Heavy gold plated binding post • Mounting Hardware: Wall hanging hole standard • Optional ball & socket or C-strap wall mounting bracket • Dimensions: 11.8" (330mm) H x 7.7" (195mm) W x 9.1" (230) D • Weight: 7.48 lbs./3.4kg • Color: Black or white

Comes with Multi-Tap Transformer

Gallardo-4 Speaker System



3 Way Full Range Passive Bass Reflex
Power Rating: 50W RMS • Frequency Response: 80-18kHz • Sensitivity: 87db • Impedance: 8 ohms • LF Driver: 2 x 4.0" • HF Driver: 1.0" soft dome tweeter • Cabinet: High-impact polycarbonate • Grill: Powder-coated steel • Connectors: Push terminals • Mounting Hardware: Universal supports • Dimensions: 13.8" (350mm) H x 18.3" (465mm) W x 12.0" (305mm) D • Weight: 24.6 lbs. each/11.2kg each • Color: Black or white

Comes with Multi-Tap Transformer

A-100F14 Speaker System



Power Rating: 100W RMS • Frequency Response: 75-18kHz • Sensitivity: 92db • Impedance: 4 ohms w/70V step-down transformer • LF Driver: PA100FA, 6.5", waterproof, stamped frame, 1.25"VC, rubber surround • HF Driver: PCT300, 1.25" soft dome • Horn Dispersion: 90 x 40 • Cabinet: High-impact polycarbonate • Grill: Black or white powder-coated steel • Connectors: NL4MP Speakon and push terminal • Mounting Hardware: (1) U-bracket and (2) M8 points for flying • Dimensions: 15" (385mm) H x 9.25" (235mm) W x 8.5" (217) D • Weight: 11.22 lbs./5.11kg • Color: Black or white

Comes with Multi-Tap Transformer

A-150F Speaker System

Compares favorably to the EV SX-80.



Power Rating: 175W RMS • Frequency Response: 65-20kHz • Sensitivity: 94db • Impedance: 8 ohms • LF Driver: E8-100S, 8", waterproof, die cast frame, 2"VC, rubber surround • HF Driver: PA-DE34S, 1" driver w/2"VC and titanium diaphragm • Horn Dispersion: 90 x 65 • Cabinet: High-impact polycarbonate • Grill: Black powder-coated steel • Connectors: NL4MP Speakon and push terminal • Mounting Hardware: (1) U-bracket and (7) M8 points for flying • Dimensions: 15.8" (400mm) H x 11.5" (292mm) W x 9" (227) D • Weight: 18.48 lbs./8.4kg • Color: Black

18" Subwoofers



SD18-1700EL

Size: 18" • Power Rating: 1700W AES • Sensitivity: 98db • Impedance: 8 Ohms • Voice Coil: 4.5" Edge wound • Freq. Response: 30-200Hz • Resonant Freq.: 42 Hz • Magnet Weight: 111.8 oz. • Frame: Cast aluminum



C18-650ELv2

Size: 18" • Power Rating: 1200W AES • Sensitivity: 98db • Impedance: 8 Ohms • Voice Coil: 4" CCA-R • Freq. Response: 30-200Hz • Resonant Freq.: 46 Hz • Frame: Cast aluminum

15" Subwoofers



C15-600ELv2

Size: 15" • Power Rating: 1200W AES • Sensitivity: 98db • Impedance: 8 Ohms • Voice Coil: 4" Aluminum • Freq. Response: 55-2kHz • Resonant Freq.: 51 Hz • Frame: Cast aluminum

12" Bass/Mid Bass



E12-250N

Size: 12" • Power Rating: 200W RMS • Sensitivity: 97db • Impedance: 8 Ohms • Voice Coil: 2" Edge wound copper • Freq. Response: 40-4kHz • Resonant Freq.: 38 Hz • Frame: Stamped Steel

NEODYMIUM

Co-Ax Speakers



SN15-500CX

Size: 15-inch • Power Rating: 600W AES • Sensitivity: 97db • Frequency Response: 55-20kHz • Resonance: 50 Hz • Voice Coil: 3.28" • Magnet Wt.: 20.5 oz. Neodymium • Frame: Cast Aluminum

NEODYMIUM



SN12-500CX

Size: 12-inch • Power Rating: 500W AES • Sensitivity: 98db • Frequency Response: 55-20kHz • Resonance: 50 Hz • Voice Coil: 3.28" • Magnet Wt.: 20.5 oz. Neodymium • Frame: Cast Aluminum

NEODYMIUM



SN8-250CX

Size: 8-inch • Power Rating: 250W AES • Sensitivity: 97db • Frequency Response: 60-20kHz • Resonance: 85 Hz • Voice Coil: 2.38" • Magnet Wt.: 19.2 oz. • Neodymium • Frame: Cast Aluminum

SN6-150CX

Size: 6.5-inch • Power Rating: 150W AES • Sensitivity: 93db • Frequency Response: 60-20kHz • Resonance: 71 Hz • Voice Coil: 1.75" • Magnet Wt.: 29.9 oz. • Frame: Cast Aluminum

21" Subwoofer



SD21-2000N

Size: 21" • Power Rating: 2000W AES • Sensitivity: 98db • Impedance: 8 Ohms • Voice Coil: 6" SV-SQ • Freq. Response: 30-200Hz • Resonant Freq.: 29 Hz • Frame: Cast aluminum • Magnet: Neodymium

NEODYMIUM



HF Horn/Driver Combos



PHT404

Size: 10.5" x 4.5" • Diaphragm: Phenolic • Power Rating: 30W RMS • Sensitivity: 105db • Frequency Response: 3-15kHz. Impedance: 8 Ohms • Horn: Cast aluminum 100° x 80° • Uses PHT.8RD diaphragm.

PHT406

Size: 4.72" round • Diaphragm: Phenolic • Power Rating: 20W RMS • Sensitivity: 105db • Frequency Response: 2-15kHz. Impedance: 8 Ohms • Horn: ABS with glass-filled polycarbonate • Uses PHT.8RD diaphragm. Used in GK & Yorkville bass cabinets.

PHT408

Size: 7.6" x 6.1" • Power Rating: 30W RMS • Sensitivity: 105db • Frequency Response: 2-15kHz. Impedance: 8 Ohms • Horn: ABS • Uses PHT.8RD diaphragm.

PHT409

Size: 5.85" x 3.46" • Diaphragm: Polyimide Film • Power Rating: 15W RMS • Sensitivity: 100db • Frequency Response: 2-15kHz. Impedance: 8 Ohms • Horn: ABS with glass-filled polycarbonate. Note: No replacement diaphragm available.

PHT410

Size: 4.3" x 4.3" • Diaphragm: Phenolic • Power Rating: 30W RMS • Sensitivity: 105db • Frequency Response: 2-15kHz. Impedance: 8 Ohms • Horn: ABS with glass-filled polycarbonate • Uses PHT.8RD diaphragm. Used in SWR, Eden and many other bass cabinets.

2-Inch HF Compression Drivers



BM-D750II

Size: 2-inch exit • Diaphragm: Titanium • Power Rating: 100W AES • Sensitivity: 112db • Frequency Response: 1k-20kHz. Impedance: 8 Ohms • Weight: 10.8 lbs. • Bolt-on

1.4-Inch HF Compression Drivers



SD-75BF

Size: 1.4-inch exit • Diaphragm: Titanium • Power Rating: 100W AES • Sensitivity: 110db • Frequency Response: 800-20kHz. Impedance: 8 Ohms • Weight: 6.1 lbs. • Ferrite magnet • Bolt-on

1-Inch HF Compression Drivers



SD-44BF/SD-44BFS

Size: 1-inch exit • Diaphragm: Titanium • Power Rating: 50W AES • Sensitivity: 105db • Frequency Response: 1.2k-20kHz. Impedance: 8 and 16 Ohms • Weight: 3.53 lbs. • Ferrite magnet • Bolt-on or screw-on



BM-D440II & D440SII

Size: 1-inch exit • Diaphragm: Titanium • Power Rating: 50W AES • Sensitivity: 108db • Frequency Response: 1.5-20kHz. Impedance: 8 Ohms • Weight: 4.2 lbs. • D440II-Bolt-on/ D440SII-Screw-on



BM-D26S

Size: One-inch exit • Diaphragm: PEI • Power Rating: 30W RMS • Sensitivity: 106db • Frequency Response: 1.5k-20kHz. Impedance: 8 Ohms • Weight: 2.3 lbs. • Screw-on version only



PAD50.16

Size: One-inch exit • Diaphragm: Phenolic • Power Rating: 60W RMS • Sensitivity: 105db • Frequency Response: 200-7kHz. Impedance: 16 Ohms • Weight: 3.4 lbs. • Screw-on version only

Replacement Diaphragms



F05029000741PAA

Replacement diaphragm for the Mackie C300 Series high frequency driver, BMD440 & BMD450 HF Driver, Behringer, Cerwin Vega, EAW, Mackie, Turbosound and others - 8 ohms



BMD440 RD

Replacement diaphragm for the BMD440 & BMD450 HF Driver, Behringer, Cerwin Vega, EAW, Mackie, Turbosound and others, 8 ohm



BMD440II RD

Replacement diaphragm for BMD440II HF compression driver. 8 ohm



BMD750II RD

Replacement diaphragm for BMD750II HF compression driver. 8 ohm



BMD750 RD

Replacement diaphragm for the BMD750 HF Driver, 8 or 16 ohm



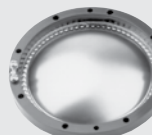
BMD26S RD

Replacement diaphragm for the BMD26S HF Driver, 8 ohm



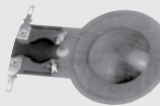
PADE34 RD

Replacement diaphragm for the A150F Cabinet, PAD 34 HF Driver, Behringer, Alto PS4 and Behringer B212, B215 and others, 8 ohm



PAD99 RD

Replacement diaphragm for the PADE99 HF Driver, 8 or 16 ohms



PHT.8RD

Replacement diaphragm for the PHT Series HF Drivers, 8 ohm



PreNeo750N RD

Replacement diaphragm for the PreNeo750N HF Driver, 8 ohm



PreNeo450N RD

Replacement diaphragm for the PreNeo450N HF Driver, 8 ohm.



SD75RD

Replacement diaphragm for SD75BF and SD75BN. 8 ohm.



Replacement Diaphragms



SD450N RD
Replacement diaphragm for the SD450 HF Driver, 8 ohm

SD750N RD
Replacement diaphragm for the SD750 HF Driver, Mackie and others, 8 ohm

SND44 RD
Replacement diaphragm for the SND44 HF Driver, Mackie and others, 8 ohm

2" Exit Horns



PH942
• 2-inch exit, 4-bolt mounting
• ABS glass-filled polycarbonate
• 90° x 40°; 400 Hz cut-off
• 12.40"H x 12.40"W x 4.40"D
• Cutout: 11.18"H x 11.02"W

PH642
• 2-inch exit, 4-bolt mounting
• ABS glass-filled polycarbonate
• 60° x 40°; 400 Hz cut-off
• 12.40"H x 12.40"W x 7.28"D
• Cutout: 11.06"H x 11.25"W

PH2380
• 2-inch exit, 4-bolt mounting
• ABS glass-filled polycarbonate
• 90° x 40°; 400 Hz cut-off
• 11.0"H x 17.5"W x 9.25"D
• Cutout: 9.25"H x 14.8"W

PH2723
• 2-inch exit, 4-bolt mounting
• ABS glass-filled polycarbonate
• 60° x 40°; 400 Hz cut-off
• 9.1"H x 10.6"W x 9.7"D
• Cutout: 7.8"H x 8.3"W

PH3223
• 2-inch exit, 4-bolt mounting
• ABS glass-filled polycarbonate
• 90° x 55°; 500 Hz cut-off
• 9.13"H x 12.83"W x 4.6"D
• Cutout: 7.68"H x 10.63"W

1.4" Exit Horns



PH64
• 1.4-inch exit, 4-bolt mounting
• ABS glass-filled polycarbonate
• 60° x 40°; 400 Hz cut-off
• 12.40"H x 12.40"W x 7.79"D
• Cutout: 11.18"H x 11.02"W

PH85
• 1.4-inch exit, 4-bolt mounting
• ABS glass-filled polycarbonate
• 80° x 50°; 500 Hz cut-off
• 7.2"H x 13.22"W x 4.01"D
• Cutout: 5.62"H x 11.45"W

PH94
• 1.4-inch exit, 4-bolt mounting
• ABS glass-filled polycarbonate
• 90° x 40°; 400 Hz cut-off
• 12.40"H x 12.40"W x 4.72"D
• Cutout: 11.18"H x 11.02"W

1" Exit Horns



PH220
• 1-inch exit, 3-bolt mounting
• Cast aluminum horn
• 90° x 75°; 800 Hz cut-off
• 8.7"H x 8.7"W x 5.24"D
• Cutout: 7.1"H x 7.1"W

PH2370
• 1-inch exit, 3-bolt mounting
• ABS glass-filled polycarbonate
• 90° x 40°; 800 Hz cut-off
• 6.8"H x 17.6"W x 6.8"D
• Cutout: 5.44"H x 15.87"W

PH2510
• 1-inch exit, screw-on mounting
• ABS glass-filled polycarbonate
• 100° x 80°; 780 Hz cut-off
• 4.33"H x 10.36"W x 3.28"D
• Cutout: 2.95"H x 8.66"W

PH641S
• 1-inch exit, screw-on mounting
• ABS glass-filled polycarbonate
• 60° x 40°; 400 Hz cut-off
• 12.40"H x 12.40"W x 8.77"D
• Cutout: 11.06"H x 11.25"W

Line Array Wave Guides



PHCL25
• 1-inch exit, 4-bolt mounting
• Die cast aluminum
• High frequency wave guide; 1000 Hz cut-off
• 7.48"H x 4.72"W x 6.54"D
• Weight: 3.30 lbs.

PHCL35
• 1.4-inch exit, 4-bolt mounting
• Die cast aluminum
• High frequency wave guide; 1000 Hz cut-off
• 7.48"H x 4.72"W x 6.54"D
• Weight: 3.30 lbs.

CL-WG
• Load with either PHCL25 or PHCL35
• Die cast aluminum
• High frequency wave guide; 1500 Hz cut-off
• 6.97"H x 7.48"W x 2.83"D
• Weight: 2.20 lbs.

Adapters



PC25- Screw-on adapter converts 1" screw-on driver to a 1" bolt-on horn.
PC35- Single adapter converts 1" bolt-on drivers to a 1" screw-on horn.
PC3525S- 1" Single adapter converts 1" screw-on drivers to a 1.4" exit, bolt-on horn.
PC3825- Single adapter, converts 1" bolt-on driver to 1.5" exit, bolt-on horn.
PC5025- Single adapter, converts 1" bolt-on driver to 2" exit, bolt-on horn.
PC5038- Single adapter converts one 1.4" bolt-on driver to a 2" exit, bolt-on horn

Prices and specs may change without notice. Not responsible for typographical errors.

21" Subwoofers



SAN214.50

Size: 21" • Power Rating: 1,700W AES • Sensitivity: 98.5db
Impedance: 8 Ohms • Voice Coil: 4.5", 125.6mm • Freq. Response: 30-1kHz • Resonant Freq.: 30 Hz • Magnet: Neodymium • Weight: 32.5 lbs • Frame: Cast Aluminum

18" Subwoofers



SAN184.03

Size: 18" • Power Rating: 1,500W AES • Sensitivity: 96db
Impedance: 8 Ohms • Voice Coil: 4.0", 100mm • Freq. Response: 35-1kHz • Resonant Freq.: 35 Hz • Magnet: Neodymium • Weight: 24.3 lbs • Frame: Cast Aluminum



SAN184.02

Size: 18" • Power Rating: 1,200W AES • Sensitivity: 96.5db
Impedance: 8 Ohms • Voice Coil: 4.0", 100mm • Freq. Response: 40-1kHz • Resonant Freq.: 40 Hz • Magnet: Neodymium • Weight: 19.8 lbs • Frame: Cast Aluminum



SAF184.03

Size: 18" • Power Rating: 1,500W AES • Sensitivity: 96db
Impedance: 8 Ohms • Voice Coil: 4.0", 100mm • Freq. Response: 30-1kHz • Resonant Freq.: 30 Hz • Magnet: Ferrite • Weight: 35.4 lbs • Frame: Cast Aluminum



SAF184.02

Size: 18" • Power Rating: 1,200W AES • Sensitivity: 97db
Impedance: 8 Ohms • Voice Coil: 4.0", 100mm • Freq. Response: 40-1kHz • Resonant Freq.: 40 Hz • Magnet: Ferrite • Weight: 33 lbs • Frame: Cast Aluminum

15" Subwoofers



WAN154.01

Size: 15" • Power Rating: 1,000W AES • Sensitivity: 98db
Impedance: 8 Ohms • Voice Coil: 4.0", 100mm • Freq. Response: 40-1kHz • Resonant Freq.: 40 Hz • Magnet: Neodymium • Weight: 22 lbs • Frame: Cast Aluminum



WAF153.00

Size: 15" • Power Rating: 500W AES • Sensitivity: 99db
Impedance: 8 Ohms • Voice Coil: 3.0", 75mm • Freq. Response: 45-3kHz • Resonant Freq.: 45 Hz • Magnet: Ferrite • Weight: 20.8 lbs • Frame: Cast Aluminum



WSF152.50

Size: 15" • Power Rating: 250W AES • Sensitivity: 97.5db
Impedance: 8 Ohms • Voice Coil: 2.5", 63mm • Freq. Response: 45-3kHz • Resonant Freq.: 45 Hz • Magnet: Ferrite • Weight: 12.8 lbs • Frame: Stamped Steel

12" Subwoofers



WAF124.01

Size: 12" • Power Rating: 1000W AES • Sensitivity: 95db
Impedance: 8 Ohms • Voice Coil: 4.0", 100mm • Freq. Response: 40-1kHz • Resonant Freq.: 40 Hz • Magnet: Ferrite • Weight: 26.2 lbs • Frame: Cast Aluminum



WAN123.00

Size: 12" • Power Rating: 500W AES • Sensitivity: 99db
Impedance: 8 Ohms • Voice Coil: 3.0", 75mm • Freq. Response: 50-3kHz • Resonant Freq.: 50 Hz • Magnet: Neodymium • Weight: 11.5 lbs • Frame: Cast Aluminum



WAF123.00

Size: 12" • Power Rating: 500W AES • Sensitivity: 99.5db
Impedance: 8 Ohms • Voice Coil: 3.0", 75mm • Freq. Response: 50-2.5kHz • Resonant Freq.: 50 Hz • Magnet: Ferrite • Weight: 19.2 lbs • Frame: Cast Aluminum



WSF122.50

Size: 12" • Power Rating: 250W AES • Sensitivity: 97.5db
Impedance: 8 Ohms • Voice Coil: 2.5", 65mm • Freq. Response: 50-3kHz • Resonant Freq.: 50 Hz • Magnet: Ferrite • Weight: 13.9 lbs • Frame: Aluminum

10" Subwoofers



WAN103.01

Size: 10" • Power Rating: 450W AES • Sensitivity: 98db
Impedance: 8 Ohms • Voice Coil: 3", 75mm • Freq. Response: 70-3.5kHz • Resonant Freq.: 70 Hz • Magnet: Neodymium • Weight: 17.6 lbs • Frame: Aluminum



WAN102.50

Size: 10" • Power Rating: 300W AES • Sensitivity: 97db
Impedance: 8 Ohms • Voice Coil: 2.5", 65mm • Freq. Response: 75-4.5kHz • Resonant Freq.: 75 Hz • Magnet: Neodymium • Weight: 4.6 lbs • Frame: Aluminum



SSF102.40-4

Size: 10" • Power Rating: 250W AES • Sensitivity: 92db
Impedance: 4 Ohms • Voice Coil: 2.4", 61mm • Freq. Response: 40-500kHz • Resonant Freq.: 43 Hz • Magnet: Ferrite • Weight: 7.3 lbs • Frame: Stamped Steel

8" Subwoofers



SSF082.00L

Size: 8" • Power Rating: 350W AES • Sensitivity: 87db
Impedance: 8 Ohms • Voice Coil: 2", 51mm • Freq. Response: 50-500kHz • Resonant Freq.: 52 Hz • Magnet: Ferrite • Weight: 7.3 lbs • Frame: Stamped Steel



SSF081.50-4

Size: 8" • Power Rating: 200W AES • Sensitivity: 90db
Impedance: 4 Ohms • Voice Coil: 1.5", 38mm • Freq. Response: 50-500Hz • Resonant Freq.: 55 Hz • Magnet: Ferrite • Weight: 5.3 lbs • Frame: Stamped Steel

5"-6.5" Woofers



WSF061.52

Size: 6.5" • Power Rating: 125W AES • Sensitivity: 94.5db
Impedance: 8 Ohms • Voice Coil: 1.5", 38mm • Freq. Response: 90-5kHz • Resonant Freq.: 90 Hz • Magnet: Ferrite • Weight: 4.2 lbs • Frame: Stamped Steel



WSF051.02

Size: 5" • Power Rating: 60W AES • Sensitivity: 91.5db
Impedance: 8 Ohms • Voice Coil: 1", 25mm • Freq. Response: 100-5kHz • Resonant Freq.: 103 Hz • Magnet: Ferrite • Weight: 1.9 lbs • Frame: Stamped Steel

1.4" High Frequency Drivers



DF14.30T

Size: 1.4" • Power Rating: 110W AES • Sensitivity: 107.5db
Impedance: 8 Ohms • Voice Coil: 3.0", 75mm • Freq. Response: 500-18kHz • Magnet: Ferrite • Diaphragm: Titanium • Weight: 9.3 lbs



DN10.140

Size: 1" • Power Rating: 30W AES • Sensitivity: 109db
Impedance: 8 Ohms • Voice Coil: 1.4", 36mm • Freq. Response: 1500-20kHz • Magnet: Neodymium • Diaphragm: High temp polymer • Weight: 1.1 lbs



DN14.25T

Size: 1.4" • Power Rating: 80W AES • Sensitivity: 108db
Impedance: 8 Ohms • Voice Coil: 2.5", 65mm • Freq. Response: 1000-20kHz • Magnet: Neodymium • Diaphragm: Titanium • Weight: 2.87 lbs

3"- 4" Full-Range Speakers



WSF041.00

Size: 4" • Power Rating: 40W AES • Sensitivity: 90db
Impedance: 8 Ohms • Voice Coil: 1", 25mm • Freq. Response: 90-6kHz • Resonant Freq.: 91 Hz • Magnet: Ferrite • Weight: 1.3 lbs • Frame: Stamped Steel



FSF041.00

Size: 4" • Power Rating: 40W AES • Sensitivity: 88db
Impedance: 8 Ohms • Voice Coil: 1", 25mm • Freq. Response: 100-18kHz • Resonant Freq.: 110 Hz • Magnet: Ferrite • Weight: 1.3 lbs • Frame: Stamped Steel



FSF030.70

Size: 3" • Power Rating: 30W AES • Sensitivity: 87.5db
Impedance: 8 Ohms • Voice Coil: .75", 20mm • Freq. Response: 120-21kHz • Resonant Freq.: 120 Hz • Magnet: Ferrite • Weight: 1.06 lbs • Frame: Stamped Steel

1.0" High Frequency Drivers



DF10.17M

Size: 1" • Power Rating: 55W AES • Sensitivity: 108db
Impedance: 8 Ohms • Voice Coil: 1.7", 44mm • Freq. Response: 1200-18kHz • Magnet: Ferrite • Diaphragm: Polyester • Weight: 3.5 lbs



DF10.14M

Size: 1" • Power Rating: 25W AES • Sensitivity: 106db
Impedance: 8 Ohms • Voice Coil: 1.4", 36mm • Freq. Response: 1500-20kHz • Magnet: Ferrite • Diaphragm: Polyester • Weight: 2.2 lbs



DN10.14M

Size: 1" • Power Rating: 25W AES • Sensitivity: 107db
Impedance: 8 Ohms • Voice Coil: 1.4", 36mm • Freq. Response: 1500-20kHz • Magnet: Neodymium • Diaphragm: Polyester • Weight: 1.1 lbs



DF10.10LM

Size: 1" • Power Rating: 15W AES • Sensitivity: 107db
Impedance: 8 Ohms • Voice Coil: 1.0", 25mm • Freq. Response: 1500-18kHz • Magnet: Ferrite • Diaphragm: Polymeric • Weight: 1.8 lbs

1"- 1.3" Tweeters



TN131.00

Size: 1.3" • Power Rating: 15W AES • Sensitivity: 92db
Impedance: 8 Ohms • Voice Coil: .75", 20mm • Freq. Response: 1250-30kHz • Resonant Freq.: 1250 Hz • Magnet: Neodymium • Weight: 0.03 lbs



TN100.70

Size: 1.0" • Power Rating: 7.5W AES • Sensitivity: 90db
Impedance: 8 Ohms • Voice Coil: 1", 25mm • Freq. Response: 1500-30kHz • Resonant Freq.: 1500 Hz • Magnet: Neodymium • Weight: 0.08 lbs

2" High Frequency Drivers



DF20.30T

Size: 2" • Power Rating: 110W AES • Sensitivity: 107.5db
Impedance: 8 Ohms • Voice Coil: 3.0", 75mm • Freq. Response: 500-18kHz • Magnet: Ferrite • Diaphragm: Titanium • Weight: 9.3 lbs

18" Subwoofers



Kilomax Pro 18A

Size: 18" • Power Rating: 1,250W RMS • Sensitivity: 95.8db
 Impedance: 8 Ohms • Voice Coil: 4", 101.6mm • Freq. Response: 33-300 Hz • Resonant Freq.: 32 Hz • Magnet Weight: 109 oz • Frame: Cast Aluminum



Impero 18A/18C

Size: 18" • Power Rating: 1200W RMS • Sensitivity: 94.5db
 Impedance: 4(C) or 8(A) Ohms • Voice Coil: 4", 101.6mm
 Freq. Response: 36-820 Hz • Resonant Freq.: 31.8 Hz
 Magnet Weight: 109 oz • Frame: Cast Aluminum



Omega Pro 18A/18C

Size: 18" • Power Rating: 800W RMS • Sensitivity: 97db
 Impedance: 4(C) or 8(A) Ohms • Voice Coil: 4", 101.6mm
 Freq. Response: 40-800 Hz • Resonant Freq.: 25 Hz
 Magnet Weight: 109 oz • Frame: Cast Aluminum



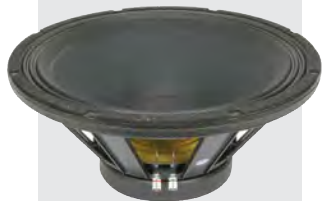
Definimax 4018LF

Size: 18" • Power Rating: 1200W RMS • Sensitivity: 94.9db
 Impedance: 8 Ohms • Voice Coil: 4", 101.6mm • Freq. Response: 31-200 Hz • Resonant Freq.: 30 Hz • Magnet Weight: 109 oz • Frame: Cast Aluminum



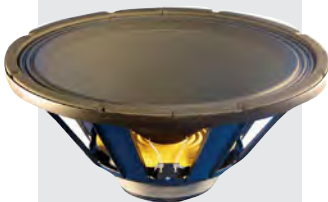
Kappa Pro 18LF

Size: 18" • Power Rating: 800W RMS • Sensitivity: 98db
 Impedance: 8 Ohms • Voice Coil: 3", 76.2mm • Freq. Response: 38-700Hz • Resonant Freq.: 32 Hz • Magnet Weight: 120 oz • Frame: Cast Aluminum



Sigma Pro 18A/18-4

Size: 18" • Power Rating: 650W RMS • Sensitivity: 99db
 Impedance: 4 or 8(A) Ohms • Voice Coil: 3", 76.2mm • Freq. Response: 41-2.4kHz • Resonant Freq.: 28 Hz • Magnet Weight: 120 oz • Frame: Cast Aluminum



Delta Pro 18A/18C

Size: 18" • Power Rating: 500W RMS • Sensitivity: 96db
 Impedance: 4(C) or 8(A) Ohms • Voice Coil: 2.5", 63.5mm
 Freq. Response: 37-250Hz • Resonant Freq.: 28 Hz
 Magnet Weight: 67 oz • Frame: Cast Aluminum

15" Subwoofers



Kilomax Pro 15A

Size: 15" • Power Rating: 1,250W RMS • Sensitivity: 95.5db
 Impedance: 8 Ohms • Voice Coil: 4", 101.6mm • Freq. Response: 44-800 Hz • Resonant Freq.: 41 Hz • Magnet Weight: 109 oz • Frame: Cast Aluminum



Definimax 4015ULF

Size: 15" • Power Rating: 1,200W RMS • Sensitivity: 93db
 Impedance: 8 Ohms • Voice Coil: 4", 101.6mm
 Freq. Response: 35-200Hz • Resonant Freq.: 38 Hz
 Magnet Weight: 109 oz • Frame: Cast Aluminum



Omega Pro 15A

Size: 15" • Power Rating: 800W RMS • Sensitivity: 97.3db
 Impedance: 8 Ohms • Voice Coil: 4", 101.6mm • Freq. Response: 51-1.7kHz • Resonant Freq.: 33 Hz • Magnet Weight: 109 oz • Frame: Cast Aluminum



Definimax 4015LF

Size: 15" • Power Rating: 700W RMS • Sensitivity: 96db
 Impedance: 8 Ohms • Voice Coil: 4", 101.6mm • Freq. Response: 35-1.2kHz • Resonant Freq.: 42 Hz • Magnet Weight: 109 oz • Frame: Cast Aluminum



LAB 15

Size: 15" • Power Rating: 600W RMS • Sensitivity: 88.5db
 Impedance: 8 Ohms • Voice Coil: 3", 76.2mm • Freq. Response: 20-125Hz • Resonant Freq.: 27.82 Hz • Magnet Weight: 109 oz • Frame: Cast Aluminum



Kappa Pro 15LFA/15LFC

Size: 15" • Power Rating: 600W RMS • Sensitivity: LFA-97.8db/LFC-96.8db • Impedance: 4 or 8 Ohms • Voice Coil: 3", 76.2mm • Freq. Response: 38-1.8kHz • Resonant Freq.: 35 Hz • Magnet Weight: 120 oz • Frame: Cast Aluminum



Kappa 15LFA

Size: 15" • Power Rating: 600W RMS • Sensitivity: 99db
 Impedance: 8 Ohms • Voice Coil: 3", 76.2mm • Freq. Response: 38-2.7kHz • Resonant Freq.: 39 Hz • Magnet Weight: 95 oz • Frame: Stamped Steel

Prices and specs may change without notice. Not responsible for typographical errors.

15" Bass/Mid Bass

LA15850

Size: 15" • Power Rating: 800W RMS • Sensitivity: 96.2db • Impedance: 8 Ohms • Voice Coil: 4.0", 101.6mm • Freq. Response: 45-1.5kHz • Resonant Freq.: 34 Hz • Magnet Weight: 109 oz • Frame: Cast Aluminum


Kappa Pro 15A

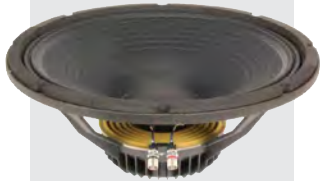
Size: 15" • Power Rating: 500W RMS • Sensitivity: 101db • Impedance: 8 Ohms • Voice Coil: 3", 76.2mm • Freq. Response: 46-4kHz • Resonant Freq.: 47 Hz • Magnet Weight: 80 oz • Frame: Cast Aluminum


Delta 15LFA/15LF4

Size: 15" • Power Rating: 500W RMS • Sensitivity: 96db • Impedance: 4(C) or 8(A) Ohms • Voice Coil: 2.5", 63.5mm • Freq. Response: 42-3.2kHz • Resonant Freq.: 41 Hz • Magnet Weight: 56 oz. • Frame: Stamped Steel


Kappalite 3015LF/3015-4

Size: 15" • Power Rating: 450W RMS • Sensitivity: 98.4db • Impedance: 4 or 8 Ohms • Voice Coil: 3", 76.2mm • Frequency Response: 40-1.5kHz • Resonant Freq.: 42 Hz • Magnet Weight: 11 oz. • Frame: Cast Aluminum

NEODYMIUM

Kappalite 3015

Size: 15" • Power Rating: 450W RMS • Sensitivity: 100.8db • Impedance: 8 Ohms • Voice Coil: 3", 76.2mm • Frequency Response: 40-4kHz • Resonant Freq.: 45 Hz • Magnet Weight: 11 oz. • Frame: Cast Aluminum

NEODYMIUM

Delta Pro 15A

Size: 15" • Power Rating: 400W RMS • Sensitivity: 101.6db • Impedance: 8 Ohms • Voice Coil: 2.5", 63.5mm • Freq. Response: 54-4.2kHz • Resonant Freq.: 42 Hz • Magnet Weight: 80 oz • Frame: Cast Aluminum


Deltalite II 2515

Size: 15" • Power Rating: 300W RMS • Sensitivity: 99.2db • Impedance: 8 Ohms • Voice Coil: 2.5", 63.5mm • Frequency Response: 54-3.7kHz • Resonant Freq.: 42 Hz • Magnet Weight: 7 oz. • Frame: Cast Aluminum

NEODYMIUM
15" All-Purpose Speakers

Kappa 15A/15C

Size: 15" • Power Rating: 450W RMS • Sensitivity: 100.5db (15A)/98.1 db (15C) • Impedance: 8 Ohms • Voice Coil: 3", 76.2mm • Freq. Response: 52-2.3kHz • Resonant Freq.: 33 Hz • Magnet Weight: 80 oz. • Frame: Stamped Steel


Delta 15A/15B

Size: 15" • Power Rating: 400W RMS • Sensitivity: 100db • Impedance: 8 or 16 Ohms • Voice Coil: 2.5", 63.5mm • Freq. Response: 48-4kHz • Resonant Freq.: 40 Hz • Magnet Weight: 56 oz. • Frame: Stamped Steel


Beta 15A

Size: 15" • Power Rating: 300W RMS • Sensitivity: 98.2db • Impedance: 8 Ohms • Voice Coil: 2.0", 50.8mm • Freq. Response: 45-3.7kHz • Resonant Freq.: 35 Hz • Magnet Weight: 34 oz. • Frame: Stamped Steel


Alpha 15A

Size: 15" • Power Rating: 200W RMS • Sensitivity: 97db • Impedance: 8 Ohms • Voice Coil: 1.5", 38.1mm • Freq. Response: 46-3.5kHz • Resonant Freq.: 41 Hz • Magnet Weight: 25 oz. • Frame: Stamped Steel

12" Subwoofer

LAB 12A/C

Size: 12" • Power Rating: 400W RMS • Sensitivity: 89.2db • Impedance: 6 or 4 Ohms • Voice Coil: 2.5", 63.5mm • Frequency Response: 25-125 Hz • Resonant Freq.: 22 Hz • Magnet Weight: 160 oz. • Frame: Cast Aluminum


Definimax 4012ULF

Size: 12" • Power Rating: 1,200W RMS • Sensitivity: 90.7db • Impedance: 8 Ohms • Voice Coil: 4", 101.6mm • Freq. Response: 37-200Hz • Resonant Freq.: 40 Hz • Magnet Weight: 109 oz • Frame: Cast Aluminum

12" Bass/Mid-Bass

LA12850

Size: 12" • Power Rating: 800W RMS • Sensitivity: 95.9db • Impedance: 8 Ohms • Voice Coil: 4.0", 101.6mm • Freq. Response: 63-2.1kHz • Resonant Freq.: 46 Hz • Magnet Weight: 109 oz • Frame: Cast Aluminum

12" Bass/Mid-Bass (Con't.)



Definimax 4012HO

Size: 12" • Power Rating: 600W RMS • Sensitivity: 94db
Impedance: 8 Ohms • Voice Coil: 4", 101.6mm • Freq.
Response: 49-2.5kHz • Resonant Freq.: 46 Hz • Magnet
Weight: 109 oz. • Frame: Cast Aluminum



Kappa Pro 12A

Size: 12" • Power Rating: 500W RMS • Sensitivity: 97.1db
Impedance: 4 or 8 Ohms • Voice Coil: 3", 76.2mm • Freq.
Response: 57-2.8kHz • Resonant Freq.: 37 Hz • Magnet
Weight: 80 oz. • Frame: Cast Aluminum



Delta 12LFA/12LFC

Size: 12" • Power Rating: 500W RMS • Sensitivity: 94.6db
Impedance: 4 or 8 Ohms • Voice Coil: 2.5", 63.5mm • Freq.
Response: 44-3kHz • Resonant Freq.: 51 Hz • Magnet
Weight: 56 oz. • Frame: Stamped Steel



Kappa 12A

Size: 12" • Power Rating: 450W RMS • Sensitivity: 99.3db
Impedance: 8 Ohms • Voice Coil: 3", 76.2mm • Freq.
Response: 62-4.2kHz • Resonant Freq.: 45 Hz • Magnet
Weight: 80 oz. • Frame: Stamped Steel



Kappalite 3012LF

Size: 12" • Power Rating: 450W RMS • Sensitivity: 95.5db
Impedance: 4 or 8 Ohms • Voice Coil: 3", 76.2mm • Freq.
Response: 46-2.0kHz • Resonant Freq.: 37.02 Hz
Magnet Weight: 11 oz. • Frame: Cast Aluminum

NEODYMIUM



Kappalite 3012HO

Size: 12" • Power Rating: 450W RMS • Sensitivity: 100.5db
Impedance: 8 Ohms • Voice Coil: 3", 76.2mm • Freq.
Response: 51-3.5kHz • Resonant Freq.: 52 Hz
Magnet Weight: 11 oz. • Frame: Cast Aluminum

NEODYMIUM



Delta Pro 12A

Size: 12" • Power Rating: 400W RMS • Sensitivity: 99.2db
Impedance: 8 Ohms • Voice Coil: 2.5", 63.5mm • Freq.
Response: 52-4.5kHz • Resonant Freq.: 51 Hz • Magnet
Weight: 80 oz. • Frame: Cast Aluminum



Delta Pro 12-450A/450C

Size: 12" • Power Rating: 375W RMS • Sensitivity:
99.8db • Impedance: 4(C) or 8(A) Ohms • Voice Coil:
2.5", 64mm • Freq. Response: 44-4kHz • Resonant
Freq.: 44 Hz • Magnet Weight: 56 oz • Frame: Cast
Aluminum



Deltalite II 2512

Size: 12" • Power Rating: 250W RMS • Sensitivity: 99.9db
Impedance: 8 Ohms • Voice Coil: 2.5", 63.5mm • Freq.
Response: 48-4kHz • Resonant Freq.: 37 Hz
Magnet Weight: 7 oz. • Frame: Cast Aluminum

NEODYMIUM

12" All-Purpose Speakers



Delta 12A/12B

Size: 12" • Power Rating: 400W RMS • Sensitivity: 98.3db
Impedance: 8 or 16 Ohms • Voice Coil: 2.5", 63.5mm • Freq.
Response: 54-5kHz • Resonant Freq.: 55 Hz • Magnet
Weight: 56 oz. • Frame: Stamped Steel



Beta 12A

Size: 12" • Power Rating: 250W RMS • Sensitivity: 98db
Impedance: 8 Ohms • Voice Coil: 2.0", 50.8mm • Freq.
Response: 43-3.8kHz • Resonant Freq.: 47 Hz • Magnet
Weight: 38 oz. • Frame: Stamped Steel



Beta 12LTA

Size: 12" • Power Rating: 225W RMS • Sensitivity: 97.7db
Impedance: 8 Ohms • Voice Coil: 2.0", 50.8mm • Freq.
Response: 48-8kHz • Resonant Freq.: 45 Hz • Magnet
Weight: 38 oz. • Frame: Stamped Steel



Alpha 12A

Size: 12" • Power Rating: 150W RMS • Sensitivity: 95.6db
Impedance: 8 Ohms • Voice Coil: 1.5", 38.1mm • Freq.
Response: 51-4.3kHz • Resonant Freq.: 49 Hz • Magnet
Weight: 20 oz. • Frame: Stamped Steel

10" Bass/Mid Bass



Kappa Pro 10A

Size: 10" • Power Rating: 500W RMS • Sensitivity: 97db
Impedance: 8 Ohms • Voice Coil: 3", 76.2mm • Freq.
Response: 102-2kHz • Resonant Freq.: 46 Hz • Magnet
Weight: 80 oz. • Frame: Cast Aluminum



Kappa Pro 10LF

Size: 10" • Power Rating: 600W RMS • Sensitivity: 91.6db
Impedance: 8 Ohms • Voice Coil: 3", 76.2mm • Freq. Re-
sponse: 47-2kHz • Resonant Freq.: 39 Hz • Magnet Weight:
17.2 lbs. • Frame: Cast Aluminum



LA10850

Size: 10" • Power Rating: 350W RMS • Sensitivity:
98.7db • Impedance: 8 Ohms • Voice Coil: 3.0",
75mm • Freq. Response: 120-4.3kHz • Resonant
Freq.: 55 Hz • Magnet Weight: 80 oz • Frame: Cast
Aluminum

10" Line Array



Beta 10CBMRA

Size: 10" • Power Rating: 200W RMS • Sensitivity: 99.6db
Impedance: 8 Ohms • Voice Coil: 2.0", 63.5mm • Freq.
Response: 300-4kHz • Resonant Freq.: 326 Hz • Magnet
Weight: 34 oz. • Frame: Stamped Steel

10" All Purpose Woofers



Delta 10A/10B

Size: 10" • Power Rating: 350W RMS • Sensitivity: 98.8db
 Impedance: 8 or 16 Ohms • Voice Coil: 2.5", 50.8mm • Freq. Response: 63-3.7kHz • Resonant Freq.: 66 Hz • Magnet Weight: 56 oz.
 Frame: Stamped Steel



Beta 10A

Size: 10" • Power Rating: 250W RMS • Sensitivity: 97db
 Impedance: 4 & 8 Ohms • Voice Coil: 2.0", 50.8mm • Freq. Response: 51-3.8kHz • Resonant Freq.: 53 Hz • Magnet Weight: 34 oz. • Frame: Stamped Steel



Deltalite II 2510

Size: 10" • Power Rating: 250W RMS • Sensitivity: 97.3db
 Impedance: 4 & 8 Ohms • Voice Coil: 2.5", 63.5mm • Freq. Response: 60-4kHz • Resonant Freq.: 37 Hz • Magnet Weight: 7 oz. • Frame: Cast Aluminum

NEODYMIUM



Alpha 10A

Size: 10" • Power Rating: 150W RMS • Sensitivity: 95.6db
 Impedance: 8 Ohms • Voice Coil: 1.5", 38.1mm • Freq. Response: 57-4.5kHz • Resonant Freq.: 50 Hz • Magnet Weight: 20 oz. • Frame: Stamped Steel

5" - 6" Line Array Woofers



Alpha 6CBMRA

Size: 6.5" • Power Rating: 100W RMS • Sensitivity: 97.8db
 • Impedance: 8 Ohms • Voice Coil: 1.5", 38.1mm • Freq. Response: 400-5kHz • Resonant Freq.: 407 Hz • Magnet Weight: 16 oz. • Frame: Closed back stamped steel



Alpha 6A/6C

Size: 6" • Power Rating: 100W RMS • Sensitivity: 93.6db • Impedance: 4 or 8 Ohms • Voice Coil: 1.5", 38.1mm • Freq. Response: 85-6kHz • Resonant Freq.: 118 Hz • Magnet Weight: 20 oz. • Frame: Stamped Steel



Pro 5W

Size: 5" • Power Rating: 75W RMS • Sensitivity: 96.1db • Impedance: 8 Ohms • Voice Coil: 1", 25mm • Freq. Response: 120-7.5kHz • Resonant Freq.: 95 Hz • Magnet Weight: 15 oz. • Frame: Stamped Steel



Pro 5MRN

Size: 5" • Power Rating: 65W RMS • Sensitivity: 93.1db • Impedance: 8 Ohms • Voice Coil: 1", 25mm • Freq. Response: 325-20kHz • Resonant Freq.: 223 Hz • Magnet Weight: 4 oz. • Frame: Stamped Steel

Coaxial Speakers



Beta 12CX

Size: 12" • Power Rating: 250W RMS • Sensitivity: 97.3db
 Impedance: 8 Ohms • Voice Coil: 2.0", 50.8mm • Freq. Response: 66-20kHz* • Resonant Freq.: 43 Hz • Magnet Weight: 38 oz. • Frame: Stamped Steel
 *with HF driver sold seperately



Beta 10CX

Size: 10" • Power Rating: 250W RMS • Sensitivity: 94.3db
 Impedance: 8 Ohms • Voice Coil: 2.0", 50.8mm • Freq. Response: 58-20kHz* • Resonant Freq.: 49 Hz • Magnet Weight: 38 oz. • Frame: Stamped Steel
 *with HF driver sold seperately



Beta 8CX

Size: 8" • Power Rating: 250W RMS • Sensitivity: 92.8db
 • Impedance: 8 Ohms • Voice Coil: 2.0", 50.8mm • Freq. Response: 74-20kHz* • Resonant Freq.: 65.52 Hz • Magnet Weight: 38 oz. • Frame: Stamped Steel
 *with HF driver sold seperately

2" - 5" Woofers



Alpha 2

Size: 2" • Power Rating: 20W RMS • Sensitivity: 83.8db
 • Impedance: 8 Ohms • Voice Coil: .64", 16.2mm • Freq. Response: 200-20kHz • Resonant Freq.: 185 Hz • Magnet Weight: 2.7 oz. • Frame: stamped steel



Alpha 3

Size: 3" • Power Rating: 30W RMS • Sensitivity: 88.6db
 • Impedance: 8 Ohms • Voice Coil: 0.787", 20mm • Freq. Response: 150-20kHz • Resonant Freq.: 118 Hz • Magnet Weight: 8 oz. • Frame: stamped steel



Alpha 4.8/Alpha 4.4

Size: 4" • Power Rating: 55W RMS • Sensitivity: 88db
 • Impedance: 8 Ohms • Voice Coil: 1.5", 38mm • Freq. Response: 100-12kHz • Resonant Freq.: 123 Hz • Magnet Weight: 10 oz. • Frame: stamped steel



Alpha 5

Size: 5" • Power Rating: 125W RMS • Sensitivity: 89.4db
 Impedance: 4 or 8 Ohms • Voice Coil: 1.0", 25mm • Freq. Response: 87-3.5kHz • Resonant Freq.: 87 Hz • Magnet Weight: 20 oz. • Frame: stamped steel

6" - 8" All-Purpose Woofers



Delta Pro 8A/8B

Size: 8" • Power Rating: 225W RMS • Sensitivity: 97.8db
 Impedance: 8(A) or 16(B) Ohms • Voice Coil: 2.0", 50.8mm
 Freq. Response: 100-3kHz • Resonant Freq.: 69 Hz • Magnet Weight: 59 oz. • Frame: Cast aluminum



Beta 8A

Size: 8" • Power Rating: 225W RMS • Sensitivity: 95.1db
 Impedance: 8 Ohms • Voice Coil: 2.0", 50.8mm • Freq. Response: 78-4.5kHz • Resonant Freq.: 65 Hz • Magnet Weight: 34 oz. • Frame: Stamped Steel



Alpha 8A

Size: 8" • Power Rating: 125W RMS • Sensitivity: 94db
 • Impedance: 8 Ohms • Voice Coil: 1.5", 38.1mm • Freq. Response: 58-5kHz • Resonant Freq.: 73 Hz • Magnet Weight: 20 oz. • Frame: Stamped Steel



Alpha 8MRA

Size: 8" • Power Rating: 125W RMS • Sensitivity: 100.9db
 • Impedance: 8 Ohms • Voice Coil: 1.5", 38.1mm • Freq. Response: 400-4.8kHz • Resonant Freq.: 514 Hz • Magnet Weight: 20 oz. • Frame: Stamped Steel



Beta 6A

Size: 6.5" • Power Rating: 175W RMS • Sensitivity: 94db
 • Impedance: 8 Ohms • Voice Coil: 2.0", 50.8mm • Freq. Response: 95-4kHz • Resonant Freq.: 122.57 Hz • Magnet Weight: 30 oz. • Frame: Stamped Steel

15" Bass Guitar Speakers



Legend CB15

Size: 15" • Power Rating: 300W RMS • Sensitivity: 98db • Impedance: 8 Ohms • Voice Coil: 2.5", 63.5mm • Freq. Response: 47-3kHz • Magnet Weight: 80 oz. • Frame: Cast Aluminum

Legend CA154

Size: 15" • Power Rating: 300W RMS • Sensitivity: 96.9db • Impedance: 4 Ohms • Voice Coil: 2.5", 63.5mm • Freq. Response: 45-3kHz • Magnet Weight: 56 oz. • Frame: Stamped Steel

Legend BP1525

Size: 15" • Power Rating: 350W RMS • Sensitivity: 96.6db • Impedance: 8 Ohms • Voice Coil: 2.5", 63.5mm • Freq. Response: 32-2.1kHz • Magnet Weight: 56 oz. • Frame: Stamped Steel

12" Bass Guitar Speakers



Legend BP122

Size: 12" • Power Rating: 250W RMS • Sensitivity: 94.1db • Impedance: 8 Ohms • Voice Coil: 2.0", 50.8mm • Freq. Response: 35-2.3kHz • Magnet Weight: 38 oz. • Frame: Stamped Steel

Basslite S2012

Size: 12" • Power Rating: 150W RMS • Sensitivity: 97db • Impedance: 8 Ohms • Voice Coil: 2.0", 50.8mm • Freq. Response: 49 - 4.5kHz • Magnet Weight: 4 oz. • Frame: Stamped Steel

NEODYMIUM

10" Bass Guitar Speakers



Legend CA1059.8/16

Size: 10" • Power Rating: 350W RMS • Sensitivity: 98.3db • Impedance: 8 and 16 ohms • Voice Coil: 2.0", 50.8mm • Freq. Response: 50-3.4kHz • Magnet Weight: 59 oz. • Frame: Die Cast Aluminum

Legend B102

Size: 10" • Power Rating: 200W RMS • Sensitivity: 93db • Impedance: 8 Ohms • Voice Coil: 2.0", 50.8mm • Freq. Response: 44-4kHz • Magnet Weight: 45 oz. • Frame: Cast Aluminum

Legend BP102

Size: 10" • Power Rating: 200W RMS • Sensitivity: 92db • Impedance: 4 or 8 Ohms • Voice Coil: 2.0", 50.8mm • Freq. Response: 40-2kHz • Magnet Weight: 38 oz. • Frame: Stamped Steel

Legend CA10

Size: 10" • Power Rating: 200W RMS • Sensitivity: 96.3db • Impedance: 4, 8, 16, and 32 ohms • Voice Coil: 2.0", 50.8mm • Freq. Response: 50-3kHz • Magnet Weight: 38 oz. • Frame: Die Cast Aluminum

Legend B810

Size: 10" • Power Rating: 150W RMS • Sensitivity: 92.7db • Impedance: 32 ohms • Voice Coil: 2.0", 50.8mm • Freq. Response: 49-5.1kHz • Magnet Weight: 30 oz. • Frame: Stamped Steel



Basslite S2010

Size: 10" • Power Rating: 150W RMS • Sensitivity: 96.2db • Impedance: 8 Ohms • Voice Coil: 2.0", 50.8mm • Freq. Response: 54 - 4kHz • Magnet Weight: 4 oz. • Frame: Stamped Steel

NEODYMIUM

15" Guitar Speakers



EPS-15C

Size: 15" w/aluminum dust cap • Power Rating: 300W RMS • Sensitivity: 100.2db • Impedance: 8 ohms • Voice Coil: 3", 75mm • Freq. Response: 42-2.9kHz • Magnet Weight: 11 oz. • Neodymium • Frame: Cast Aluminum

NEODYMIUM

Big Ben

Size: 15" • Power Rating: 225W RMS • Sensitivity: 101.5db • Impedance: 8 ohms • Voice Coil: 2.5", 63.5mm • Freq. Response: 70-3.5kHz • Magnet Weight: 56 oz. • Frame: Stamped Steel

Wheelhouse 200

Size: 15" • Power Rating: 200W RMS • Sensitivity: 101.5db • Impedance: 8 ohms • Voice Coil: 2.5", 63.5mm • Freq. Response: 60-3.5kHz • Magnet Weight: 11 oz. • Frame: Stamped Steel

Legend 1518

Size: 15" • Power Rating: 150W RMS • Sensitivity: 102.2db • Impedance: 8 Ohms • Voice Coil: 2.0", 50.8mm • Freq. Response: 60-4kHz • Magnet Weight: 59 oz. • Frame: Stamped Steel

12" Guitar Speakers



PF-350

Size: 12" • Power Rating: 350W RMS • Sensitivity: 99db • Impedance: 8 ohms • Voice Coil: 4.0", 100mm • Freq. Response: 65-3.5kHz • Resonant Freq: 62.6Hz • Magnet Weight: 109 oz. • Frame: Cast Aluminum

Legend EM12

Size: 12" • Power Rating: 200W RMS • Sensitivity: 101.1db • Impedance: 8 Ohms • Voice Coil: 2.5", 62mm • Freq. Response: 60-4.9kHz • Magnet Weight: 80 oz. • Frame: Cast Aluminum

Legend EM12N

Size: 12" • Power Rating: 200W RMS • Sensitivity: 99.9db • Impedance: 8 Ohms • Voice Coil: 2.5", 64mm • Freq. Response: 60-4.2kHz • Magnet Weight: 11 oz. • Frame: Stamped Steel

The Tonker

Size: 12" • Power Rating: 150W RMS • Sensitivity: 102db • Impedance: 8 or 16 ohms • Voice Coil: 2", 50.8mm • Freq. Response: 70-5.5kHz • Magnet Weight: 59 oz. • Frame: Stamped Steel

Prices and specs may change without notice. Not responsible for typographical errors.

12" Guitar Speakers (Cont.)



HempDog 12

Size: 12" • Power Rating: 150W RMS • Sensitivity: 102.3db (8 ohm) • Impedance: 8 ohms • Voice Coil: 2.5", 63.5mm • Freq. Response: 80-3.8kHz • Magnet Weight: 80 oz. • Frame: Cast aluminum

Texas Heat

Size: 12" • Power Rating: 150W RMS • Sensitivity: 99db (8 ohm) 100 dB (16 ohm) • Impedance: 8 or 16 ohms • Voice Coil: 2", 50.8mm • Freq. Response: 70-5kHz • Magnet Weight: 38 oz. • Frame: Stamped Steel

Legend 1218

Size: 12" • Power Rating: 150W RMS • Sensitivity: 98.8db • Impedance: 8 Ohms • Voice Coil: 2.0", 50.8mm • Freq. Response: 80-4.2kHz • Magnet Weight: 38 oz. • Frame: Stamped Steel

Swamp Thang

Size: 12" • Power Rating: 150W RMS • Sensitivity: 102db • Impedance: 8 or 16 ohms • Voice Coil: 2", 50.8mm • Freq. Response: 70-5kHz • Magnet Weight: 59 oz. • Frame: Stamped Steel

Wheelhouse 150

Size: 12" • Power Rating: 150W RMS • Sensitivity: 101.4db • Impedance: 8 ohms • Voice Coil: 2.5", 63.5mm • Freq. Response: 80-3.8kHz • Resonant Freq: 82 Hz. • Magnet Weight: 11 oz. neodymium • Frame: Stamped Steel

NEODYMIUM

Tonkerlite

Size: 12" • Power Rating: 125W RMS • Sensitivity: 101db • Impedance: 8 or 16 ohms • Voice Coil: 2", 50.8mm • Freq. Response: 70-5.5kHz • Magnet Weight: 4 oz. Neodymium • Frame: Stamped Steel

NEODYMIUM

Lil' Texas

Size: 12" • Power Rating: 125W RMS • Sensitivity: 101db • Impedance: 8 or 16 ohms • Voice Coil: 2", 50.8mm • Freq. Response: 70-5.5kHz • Magnet Weight: 4 oz. Neodymium • Frame: Stamped Steel

Legend V128

Size: 12" • Power Rating: 120W RMS • Sensitivity: 100.9db • Impedance: 8 Ohms • Voice Coil: 1.75", 44.5mm • Freq. Response: 80-5kHz • Magnet Weight: 38 oz. • Frame: Stamped Steel

Man O War

Size: 12" • Power Rating: 120W RMS • Sensitivity: 102db (8 ohm) 105.6dB (16 ohm) • Impedance: 8 or 16 ohms • Voice Coil: 1.75", 44.5mm • Freq. Response: 70-5.5kHz • Magnet Weight: 38 oz. • Frame: Stamped Steel

Red White & Blues

Size: 12" • Power Rating: 120W RMS • Sensitivity: 101db • Impedance: 8 ohms • Voice Coil: 1.75", 44.5mm • Freq. Response: 70-4.5kHz • Magnet Weight: 38 oz. • Frame: Stamped Steel



Guit-Fiddle

Size: 12" • Power Rating: 100W RMS • Sensitivity: 100.1db • Impedance: 8 ohms • Voice Coil: 2.0", 50.8mm • Freq. Response: 80-4.5kHz • Magnet Weight: 38 oz. • Frame: Stamped Steel

The Wizard

Size: 12" • Power Rating: 75W RMS • Sensitivity: 103db (8 ohm) 103.5dB (16 ohm) • Impedance: 8 or 16 ohms • Voice Coil: 1.75", 44.5mm • Freq. Response: 70-5.5kHz • Magnet Weight: 56 oz. • Frame: Stamped Steel

Legend 1258

Size: 12" • Power Rating: 75W RMS • Sensitivity: 100.1db • Impedance: 8 Ohms • Voice Coil: 1.5", 38.1mm • Freq. Response: 80-4kHz • Magnet Weight: 34 oz. • Frame: Stamped Steel

Legend 12-75

Size: 12" • Power Rating: 75W RMS • Sensitivity: 101.1db • Impedance: 8 Ohms • Voice Coil: 1.5", 38mm • Freq. Response: 80-5.1kHz • Magnet Weight: 34 oz. • Frame: Stamped steel

The Governor

Size: 12" • Power Rating: 75W RMS • Sensitivity: 102db • Impedance: 8 or 16 ohms • Voice Coil: 1.75", 44.5mm • Freq. Response: 70-5kHz • Magnet Weight: 56 oz. • Frame: Stamped Steel

CV75

Size: 12" • Power Rating: 75W RMS • Sensitivity: 102.2db 8 ohm • Impedance: 8 ohms • Voice Coil: 1.75", 44.5mm • Freq. Response: 80-5.5kHz • Magnet Weight: 56 oz. • Frame: Stamped Steel

Ram Rod

Size: 10" • Power Rating: 75W RMS • Sensitivity: 100.2db • Impedance: 8 ohms • Voice Coil: 1.5", 38.1mm • Freq. Response: 80-5kHz • Magnet Weight: 30 oz. • Frame: Stamped Steel

Maverick

Size: 12" • Power Rating: 75W RMS • Sensitivity: 99.4 db (8 ohm) 100db (16 ohm) • Impedance: 8 or 16 ohms • Voice Coil: 1.75" • Freq. Response: 82-4.5kHz • Magnet Weight: 38 oz. • Frame: Stamped Steel

Volume attenuation control on back of

CV-65

Size: 12" • Power Rating: 65W RMS • Sensitivity: 100.6db (8 ohm) • Impedance: 8 ohms • Voice Coil: 1.75", 44.5mm • Freq. Response: 80-5kHz • Magnet Weight: 34 oz. • Frame: Stamped Steel

Private Jack

Size: 12" • Power Rating: 50W RMS • Sensitivity: 101db (8 ohm) 100.3dB (16 ohm) • Impedance: 8 or 16 ohms • Voice Coil: 1.75", 44.5mm • Freq. Response: 70-5kHz • Magnet Weight: 38 oz. • Frame: Stamped Steel



TF-1250

Size: 12" • Power Rating: 50W RMS • Sensitivity: 100.7db • Impedance: 8 ohms • Voice Coil: 1.5", 38mm • Freq. Response: 80-4.4kHz • Resonant Freq: 95Hz • Magnet Weight: 30 oz. • Frame: Stamped Steel

JS-1250

Size: 12" • Power Rating: 50W RMS • Sensitivity: 101.4db • Impedance: 8 ohms • Voice Coil: 1.75", 44.5mm • Freq. Response: 80-5.2kHz • Resonant Freq: 95Hz • Magnet Weight: 38 oz. • Frame: Stamped Steel

Legend GB128

Size: 12" • Power Rating: 50W RMS • Sensitivity: 101.4db • Impedance: 8 Ohms • Voice Coil: 1.75", 44.5mm • Freq. Response: 80-5.1kHz • Magnet Weight: 38 oz. • Frame: Stamped Steel

EJ1240

Size: 12" • Power Rating: 40W RMS • Sensitivity: 100.7db • Impedance: 8 or 16 ohms • Voice Coil: 1.75", 44.5mm • Freq. Response: 80-5kHz • Magnet Weight: 35 oz. Alnico • Frame: Stamped Steel

Cannabis Rex

Size: 12" • Power Rating: 50W RMS • Sensitivity: 101.8db • Impedance: 8 or 16 ohms • Voice Coil: 1.75", 44.5mm • Freq. Response: 70-5kHz • Magnet Weight: 38 oz. • Frame: Stamped Steel

10" Guitar Speakers



The Copperhead

Size: 10" • Power Rating: 75W RMS • Sensitivity: 98.8db • Impedance: 8 ohms • Voice Coil: 1.5", 38.1mm • Freq. Response: 70-5kHz • Magnet Weight: 20 oz. • Frame: Stamped Steel

Legend 1058/10516

Size: 10" • Power Rating: 75W RMS • Sensitivity: 98.7db • (8ohm) 100dB (16 ohm) • Impedance: 8 or 16 Ohms • Voice Coil: 1.5", 38.1mm • Freq. Response: 100-6kHz • Magnet Weight: 16 oz. • Frame: Stamped Steel

Ragin Cajun

Size: 10" • Power Rating: 75W RMS • Sensitivity: 100.5db • Impedance: 8 ohms • Voice Coil: 1.5", 38.1mm • Freq. Response: 70-5kHz • Magnet Weight: 30 oz. • Frame: Stamped Steel

RF-10C

Size: 10" • Power Rating: 50W RMS • Sensitivity: 100.4db • Impedance: 8 ohms • Voice Coil: 1.75", 44mm • Freq. Response: 80-4.2kHz • Resonant Freq: 105Hz • Magnet Weight: 38 oz. • Frame: Stamped Steel

Lil' Buddy

Size: 10" • Power Rating: 50W RMS • Sensitivity: 98.8db • Impedance: 8 ohms • Voice Coil: 1.75", 44.5mm • Freq. Response: 80-5kHz • Magnet Weight: 30 oz. • Frame: Stamped Steel



Legend 102.8K

Size: 10" • Power Rating: 35W RMS • Sensitivity: 97.4db • Impedance: 8 Ohms • Voice Coil: 1", 25.1mm • Freq. Response: 100-5.5kHz • Magnet: Alnico • Frame: Stamped Steel

GA10-SC64

Size: 10" • Power Rating: 20W RMS • Sensitivity: 98.2db • Impedance: 8 Ohms • Voice Coil: 1", 25mm • Freq. Response: 100-5.5kHz • Resonant Freq: 98.2kHz • Magnet Weight: 15 oz. • Frame: Stamped Steel

Cannabis Rex 10

Size: 10" • Power Rating: 50W RMS • Sensitivity: 99.3db • Impedance: 4 or 8 Ohms • Voice Coil: 1.75", 44.5mm • Freq. Response: 80-5.3kHz • Resonant Freq: 130 Hz • Magnet Weight: 38 oz. • Frame: stamped steel

6" - 8" Guitar Speakers



820H

Size: 8" • Power Rating: 20W RMS • Sensitivity: 96.1db • Impedance: 4 ohms • Voice Coil: 1.0", 25.4mm • Freq. Response: 80-4.6kHz • Magnet Weight: 15 oz. • Frame: Stamped Steel

620H

Size: 6.5" • Power Rating: 20W RMS • Sensitivity: 94.6db • Impedance: 4 ohms • Voice Coil: 1.0", 25.4mm • Freq. Response: 100-5.3kHz • Magnet Weight: 15 oz. • Frame: Stamped Steel

2" HF Compression Drivers



N320T-8

NEODYMIUM

Throat Size: 2" 4-bolt • Diaphragm: Titanium • Power Rating: 100W RMS • Sensitivity: 110.4db • Voice Coil: 3", 76mm • Frequency Response: 800-20kHz • Impedance: 8 Ohm • Recommended X-over: 800 Hz.

PSD3006

Throat Size: 2" 3-bolt • Diaphragm: Titanium • Power Rating: 100W RMS • Sensitivity: 108.8db • Frequency Response: 500-18kHz • Impedance: 8 Ohm • Recommended X-over: 500 or 800 Hz.

1.4" HF Compression Drivers



N314T-8

NEODYMIUM

Throat Size: 1.4" 4-bolt • Diaphragm: Titanium • Power Rating: 100W RMS • Sensitivity: 110.9db • Frequency Response: 800-20kHz • Voice Coil: 3", 76mm • Impedance: 8 Ohm • Recommended X-over: 800 Hz.

Prices and specs may change without notice. Not responsible for typographical errors.

1" HF Compression Drivers



PSD2013/PSD2013S

Throat Size: 1" 3-bolt or screw-on • Diaphragm: Titanium • Power Rating: 85W RMS • Sensitivity: 108.3db • Frequency Response: 1.5-20kHz • Impedance: 8 or 16 ohms (bolt-on); 8 ohms (screw-on); no 16 ohm screw-on version • Voice Coil: 2" • Recommended X-over: 1.5K



PSD2002/PSD2002S

Throat Size: 1" 3-bolt or screw-on • Diaphragm: Titanium • Power Rating: 80W RMS • Sensitivity: 105db • Frequency Response: 1.5-20kHz • Impedance: 8 or 16 ohms • Voice Coil: 2" • Recommended X-over: 1.6K



NSD-2005

NEODYMIUM

Throat Size: 1" 3-bolt or screw-on • Diaphragm: Titanium • Power Rating: 50W RMS • Sensitivity: 111db • Frequency Response: 1.5-16kHz • Impedance: 8 or 16 Ohms (bolt-on); 8 Ohms (screw-on); no 16 ohm screw-on version • Voice Coil: 2" • Recommended X-over: 1.5K/12dB



ASD1001S

Throat Size: 1" screw-on • Diaphragm: Diamond Titanium • Power Rating: 50W RMS • Sensitivity: 103db • Frequency Response: 2.5-19kHz • Impedance: 8 Ohms • Voice Coil: 1.357" • Recommended X-over: 2.5K/18db



ASD1001B

Throat Size: 1" bolt-on • Diaphragm: Titanium • Power Rating: 50W AES • Sensitivity: 104.1db • Frequency Response: 2.5-20kHz • Impedance: 8 Ohms • Voice Coil: 1.3", 33mm • Recommended X-over: 2.5K/18db • 12 oz. Ferrite Magnet



N151M-8

NEODYMIUM

Throat Size: 1" bolt-on • Diaphragm: Mylar • Power Rating: 45W AES • Sensitivity: 111.5db • Frequency Response: 1.8-27kHz • Impedance: 8 Ohms • Voice Coil: 1.5", 38.1mm • Recommended X-over: 1.8K/12db • 4.5 oz. Neodymium Magnet



F151M-8

Throat Size: 1" bolt-on • Diaphragm: Mylar • Power Rating: 45W AES • Sensitivity: 108.9db • Frequency Response: 1.8-20kHz • Impedance: 8 Ohms • Voice Coil: 1.5", 38.1mm • Recommended X-over: 1.8K/12db • 15 oz. Ferrite Magnet

Tweeters/Horn Drivers



APT200S

- 1-inch exit
- ABS glass-filled polycarbonate
- 90° x 90°; 1.3kHz cut-off
- 5.92"W x 5.95"H x 4.32"D
- Cut-out: 4.25" x 4.5"



APT30

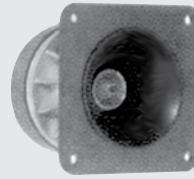
Diaphragm: Phenolic • Power Rating: 10W AES • Sensitivity: 94.3db • Frequency Response: 3.5-20kHz • Impedance: 8 Ohms • Recommended X-over: 3.5K • Weight: .4 lbs.



APT50

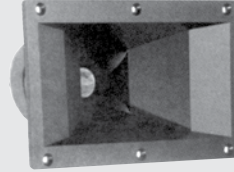
Diaphragm: Phenolic • Power Rating: 45W RMS • Sensitivity: 105db • Frequency Response: 3.5-20kHz • Impedance: 8 Ohms • Recommended X-over: 3.5K • Weight: 1.5 lbs. • Application Note: Must be used with APT-3

Tweeters/Horn Drivers



APT80

Diaphragm: Phenolic • Power Rating: 45W RMS • Sensitivity: 105db • Frequency Response: 3.5-20kHz • Impedance: 8 Ohms • Weight: 1.6 lbs. • Recommended X-over: 3.5K • Size: 3.4" x 3.4" • Cutout Dimension: 3.15" circular



APT150

Diaphragm: Phenolic • Power Rating: 45W RMS • Sensitivity: 105db • Frequency Response: 2.5-20kHz • Impedance: 8 Ohms • Weight: 2 lbs. • Recommended X-over: 3.5K • Size: 7.5" x 4.5" • Cutout Dimension: 6.7" x 3.4"



BGH25-8

Diaphragm: Phenolic • Power Rating: 25W RMS • Sensitivity: 105.2db • Frequency Response: 2.5-20kHz • Impedance: 8 Ohms • Weight: 2.2 lbs. • Recommended X-over: 2.5K • Size: 4.2" x 4.2" • Cutout Dimension: 3.5", 88.9mm circular



SD28

Silk dome • Power Rating: 10W AES • Sensitivity: 92.5db • Frequency Response: 1.5-20kHz • Impedance: 8 Ohms • Weight: 1 lb. • Recommended X-over: 1.5K • Size: 1.48" x 1" • Cutout Dimension: rear-mount

Wave Guides



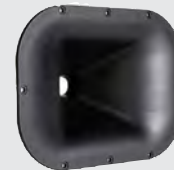
LA-WG10

- 1-inch exit, bolt-on
- Aluminum
- 140° x 15°; 1.8kHz cut-off
- 3.5" x 4.4" x 4.4"; 89 x 112 x 112 mm
- Cut-out: 1 x 4", 25.4 x 102 mm



LA-WG14

- 1.4-inch exit, bolt-on
- Aluminum
- 140° x 15°; 1.0kHz cut-off
- 5.2" x 6.4" x 7.1"; 131 x 163 x 181 mm
- Cut-out: 1 x 6", 25.4 x 152.4 mm



WG10

- 1-inch exit, bolt-on
- ABS
- 70° x 60°; 1.4kHz cut-off
- 11.6" x 8.6" x 4.5"; 295 x 218 x 114 mm
- Cut-out: 10.4 x 7.4"; 264 x 188 mm

Horns



APT150S

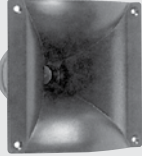
- 1-inch exit
- ABS glass-filled polycarbonate
- 100° x 50°; 1.5kHz cut-off
- 4.49"W x 7.55"H x 3.18"D
- Cut-out: 3.4" x 6.7"



APT80S

- 1-inch exit
- ABS glass-filled polycarbonate
- 80° conical; 3kHz cut-off
- 2.94" circle
- Cut-out: 3.4" x 6.7"

Horns



APT200

- 1-inch exit used with APT 50 driver
- ABS glass-filled polycarbonate
- 90° x 90°; 1kHz cut-off
- 5.9"W x 5.9"H x 5.1"D
- Cut-out: 4.25" x 4.5"



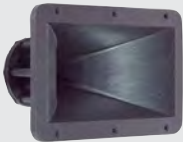
BH410

- 1-inch exit, 3-bolt mounting
- ABS glass-filled polycarbonate
- 60° x 60°; 1kHz cut-off
- 5.59"W x 5.59"H x 4.38"D
- Cut-out: 3.56" x 3.56"



H290S

- 1-inch exit screw-on
- ABS glass-filled polycarbonate
- 90° x 40°; 1.0kHz cut-off
- 11.7"W x 6.6"H x 6.6"D
- Cut-out: 9.7" x 4.9"



H290B

- 1-inch exit bolt-on
- ABS glass-filled polycarbonate
- 90° x 40°; 1.0kHz cut-off
- 11.7"W x 6.6"H x 6.6"D
- Cut-out: 9.7" x 4.9"



H2EA

- 2-inch exit
- ABS glass-filled polycarbonate
- 60° x 40°; 700Hz cut-off
- 12.4"W x 7.3"H x 6.1"D
- Cut-out: 11.3" x 6.3"



H14EA

- 1.4-inch exit
- Aluminum
- 60° x 40°; 600Hz cut-off
- 12.6"W x 7.5"H x 7.9"D
- Cut-out: 11.3" x 6.1"

Replacement Diaphragms



PSD 2002 RD

Replacement diaphragm for the PSD2002 & PSD 2002S drivers, 8 and 16 ohm



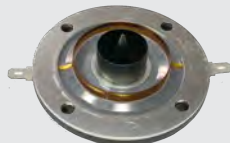
MD2001 RD

Replacement diaphragm for the MD2001 driver, 8 and 16 ohm



N314TDIA

Replacement diaphragm for the N314T and N320T drivers, 8 ohms.



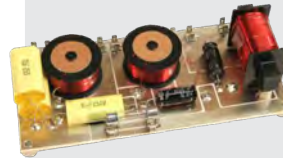
N151MDIA

Replacement diaphragm for the N151M and F151M drivers, 8 ohms.

PX Series Crossovers



High-powered crossovers feature board-mounted components only which can be mounted internally. Fused for protection.



Crossover Specifications

pxb-250

Type: Low-Pass • Cabinet Ready: No • Crossover Freq: 250Hz • Slope: 12db/octave Butterworth • Impedance: 8 ohms • Power Handling: 600W RMS

pxb-500

Type: Low-Pass • Cabinet Ready: No • Crossover Freq: 500Hz • Slope: 12db/octave Butterworth • Impedance: 8 ohms • Power Handling: 600W RMS

pxb-1k6

Type: High-Pass • Cabinet Ready: No • Crossover Freq: 1.6kHz
• Slope: 18db/octave Butterworth • Impedance: 8 ohms • Power Handling: 400W RMS

pxb-1k8

Type: High-Pass • Cabinet Ready: No • Crossover Freq: 1.8kHz
• Slope: 18db/octave Butterworth • Impedance: 8 ohms • Power Handling: 400W RMS

pxb-3k5

Type: High-Pass • Cabinet Ready: No • Crossover Freq: 3.5kHz
• Slope: 18db/octave Butterworth • Impedance: 8 ohms • Power Handling: 400W RMS

pxb-5k0

Type: High-Pass • Cabinet Ready: No • Crossover Freq: 5kHz • Slope: 18db/octave Butterworth • Impedance: 8 ohms • Power Handling: 400W RMS

pxb2-1k6

Type: High-Pass 2-way • Cabinet Ready: No • Crossover Freq: 1.6kHz
• Slope: 18db/octave Butterworth • Impedance: 8 ohms • Power Handling: 400W RMS

pxb2-2k5cx

Type: High-Pass 2-way • Cabinet Ready: No • Crossover Freq: 2.5kHz
• Slope: 18db/octave Butterworth • Impedance: 8 ohms • Power Handling: 400W RMS

pxb2-3k5

Type: High-Pass 2-way • Cabinet Ready: No • Crossover Freq: 3.5kHz
• Slope: 18db/octave Butterworth • Impedance: 8 ohms • Power Handling: 400W RMS



HA1-14

Aluminum adapter allows you to pair a 1" bolt-on horn or driver with a 1.4" bolt-on device.



HA14-2

Aluminum adapter allows you to pair a 1.4" bolt-on horn or driver with a 2" bolt-on device.



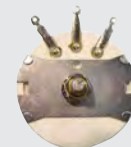
S2B-A

Aluminum adapter converts bolt-on driver to accept a screw-on horn. 2x1/4-20 or 3x M6 driver to 1-3/8" 18 thread horn.



B2S-A

Aluminum adapter converts screw-on driver to accept a bolt-on horn. 1 3/8" 18 ext. driver to 2x 1/4-20 or 3x M6 horn.



PX-L-Pad

Crossover L-Pad Attenuator



PX-Bulb

PX Series Crossover
Replacement Bulb-Fuse



Guitar Speakers



Heritage Series

Heritage G12H (55Hz)

Size: 12-inch • Power Rating: 30W RMS • Sensitivity: 100dB
 • Frequency Response: 55-5kHz • Impedance: 8 or 15 ohm
 • Magnet: 50 oz. Ceramic • Voice Coil: 1.75" Round Copper •
 Frame: Pressed Steel



Heritage G12H (75Hz)

Size: 12-inch • Power Rating: 30W RMS • Sensitivity: 100dB
 • Frequency Response: 75-5kHz • Impedance: 8 or 15 ohm
 • Magnet: 50 oz. Ceramic • Voice Coil: 1.75" Round Copper •
 Frame: Pressed Steel



Heritage G12M

Size: 12-inch • Power Rating: 20W RMS • Sensitivity: 96dB
 • Frequency Response: 75-5kHz • Impedance: 8 or 15 ohm
 • Magnet: 35 oz. Ceramic • Voice Coil: 1.75" Round Copper •
 Frame: Pressed Steel



Heritage G12-65

Size: 12-inch • Power Rating: 65W RMS • Sensitivity: 97dB
 • Frequency Response: 80-5kHz • Impedance: 8 or 15 ohm
 • Magnet: 35 oz. Ceramic • Voice Coil: 1.75" Round Copper •
 Frame: Pressed Steel



Alnico Series

Celestion Blue

Size: 12-inch • Power Rating: 15W RMS • Sensitivity: 100dB
 • Frequency Response: 75-5kHz • Impedance: 8 or 15 ohm
 • Weight: 9.3 lb. • Voice Coil: 1.75" Round Copper • Frame:
 Pressed Steel • Magnet: Alnico



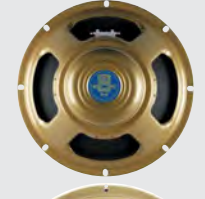
Celestion Gold

Size: 12-inch • Power Rating: 50W RMS • Sensitivity: 100dB
 • Frequency Response: 75-5kHz • Impedance: 8 or 15 ohm
 • Magnet: Alnico • Voice Coil: 1.75" Round Copper • Frame:
 Pressed Steel



Celestion Cream

Size: 12-inch • Power Rating: 90W RMS • Sensitivity: 100dB
 • Frequency Response: 75-5kHz • Impedance: 8 or 16 ohm
 • Magnet: Alnico • Voice Coil: 1.75" Round Copper • Frame:
 Pressed Steel



G10 Gold

Size: 10-inch • Power Rating: 40W RMS • Sensitivity: 98dB
 • Frequency Response: 80-6kHz • Impedance: 8 or 15 ohm
 • Magnet: Alnico • Voice Coil: 1.75" Round Copper • Frame:
 Pressed Steel



Classic Series

G15V-100 Fullback

Size: 15-inch • Power Rating: 100W RMS • Sensitivity: 99dB
 • Frequency Response: 65-4kHz • Impedance: 8 or 16 ohm
 • Magnet: Ceramic • Voice Coil: 2" Round Copper • Frame:
 Pressed Steel



Classic Series (con't.)

G12H-150 Redback

Size: 12-inch • Power Rating: 150W RMS • Sensitivity: 100dB
 • Frequency Response: 70-5kHz • Impedance: 8 or 16 ohm
 • Magnet: 50 oz. Ceramic • Voice Coil: 2.0" Round Copper •
 Frame: Pressed Steel



G12M-65 Creamback

Size: 12-inch • Power Rating: 65W RMS • Sensitivity: 97dB
 • Frequency Response: 70-5kHz • Impedance: 8 or 16 ohm
 • Magnet: 35 oz. Ceramic • Voice Coil: 1.75" Round Copper •
 Frame: Pressed Steel



G12H-75 Creamback

Size: 12-inch • Power Rating: 75W RMS • Sensitivity: 100dB
 • Frequency Response: 70-5kHz • Impedance: 8 or 16 ohm
 • Magnet: 50 oz. Ceramic • Voice Coil: 1.75" Round Copper •
 Frame: Pressed Steel



Neo Creamback

Size: 12-inch • Power Rating: 60W RMS • Sensitivity: 97dB
 • Frequency Response: 75-5kHz • Impedance: 8 or 16 ohm
 • Magnet: Neodymium • Voice Coil: 1.75" Round Copper • Frame:
 Pressed Steel



G12M Greenback

Size: 12-inch • Power Rating: 25W RMS • Sensitivity: 98dB
 • Frequency Response: 75-5kHz • Impedance: 8 or 16 ohm
 • Magnet: 35 oz. Ceramic • Voice Coil: 1.75" Round Copper •
 Frame: Pressed Steel



G12H Anniversary

Size: 12-inch • Power Rating: 30W RMS • Sensitivity: 100dB
 • Frequency Response: 75-5kHz • Impedance: 8 or 16 ohm
 • Magnet: 50 oz. Ceramic • Voice Coil: 1.75" Round Copper •
 Frame: Pressed Steel



Vintage 30

Size: 12-inch • Power Rating: 60W RMS • Sensitivity: 100dB
 • Frequency Response: 70-5kHz • Impedance: 8 or 16 ohm
 • Magnet: 50 oz. Ceramic • Voice Coil: 1.75" Round Copper •
 Frame: Pressed Steel



G12T-75

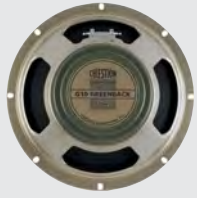
Size: 12-inch • Power Rating: 75W RMS • Sensitivity: 97dB
 • Frequency Response: 80-5kHz • Impedance: 8 or 16 ohm
 • Magnet: 35 oz. Ceramic • Voice Coil: 1.75" Round Copper •
 Frame: Pressed Steel



G12K-100

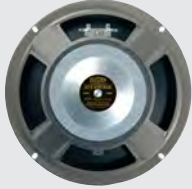
Size: 12-inch • Power Rating: 100W RMS • Sensitivity: 100dB
 • Frequency Response: 70-5.5kHz • Impedance: 8 ohm
 • Magnet: 50 oz. Ceramic • Voice Coil: 1.75" Round Copper •
 Frame: Pressed Steel

Classic Series (con't.)



G10 Greenback

Size: 10-inch • Power Rating: 30W RMS • Sensitivity: 95dB • Frequency Response: 95-5.5kHz • Impedance: 8 or 16 ohm • Magnet: Ceramic • Voice Coil: 1.75" Round Copper • Frame: Pressed Steel



G10 Vintage

Size: 10-inch • Power Rating: 60W RMS • Sensitivity: 99dB • Frequency Response: 100-5.5kHz • Impedance: 8 or 16 ohm • Magnet: 31 oz. Ceramic • Voice Coil: 1.75" Round Copper • Frame: Pressed Steel



G12 - Classic Lead 80

Size: 12-inch • Power Rating: 80W RMS • Sensitivity: 99dB • Frequency Response: 80-5kHz • Impedance: 8 or 16 ohm • Magnet: 50 oz. Ceramic • Voice Coil: 1.75" Round Copper • Frame: Pressed Steel



G12 - V-Type

Size: 12-inch • Power Rating: 70W RMS • Sensitivity: 98dB • Frequency Response: 75-5kHz • Impedance: 8 or 16 ohm • Magnet: 31 oz. Ceramic • Voice Coil: 1.75" Round Copper • Frame: Pressed Steel



G12 - A-Type

Size: 12-inch • Power Rating: 50W RMS • Sensitivity: 98dB • Frequency Response: 75-5kHz • Impedance: 8 or 16 ohm • Magnet: 35 oz. Ceramic • Voice Coil: 1.75" Round Copper • Frame: Pressed Steel

Original Series



G12T "Hot 100"

Size: 12-inch • Power Rating: 100W RMS • Sensitivity: 97dB • Frequency Response: 80-5kHz • Impedance: 4, 8 or 16 ohm • Magnet: 35 oz. Ceramic • Voice Coil: 2.0" Round Copper • Frame: Pressed Steel



Seventy 80

Size: 12-inch • Power Rating: 80W RMS • Sensitivity: 98dB • Frequency Response: 80-5kHz • Impedance: 8 or 16 ohm • Magnet: 31 oz. Ceramic • Voice Coil: 1.75" Round Copper • Frame: Pressed Steel



Rocket 50

Size: 12-inch • Power Rating: 50W RMS • Sensitivity: 95dB • Frequency Response: 80-5kHz • Impedance: 8 ohm • Magnet: 17 oz. Ceramic • Voice Coil: 1.5" Round Copper • Frame: Pressed Steel

Original Series (con't.)

Ten 30

Size: 10-inch • Power Rating: 30W RMS • Sensitivity: 95dB • Frequency Response: 85-5kHz • Impedance: 8 or 16 ohm • Magnet: 13 oz. ceramic • Voice Coil: 1.25" Round Copper • Frame: Pressed Steel



Eight 15

Size: 8-inch • Power Rating: 15W RMS • Sensitivity: 95dB • Frequency Response: 100-6kHz • Impedance: 4, 8 or 16 ohm • Magnet: 13 oz. ceramic • Voice Coil: 1.0" Round Copper • Frame: Pressed Steel • Perfect Fender Champ replacement speaker

Signature Series

G12-EVH

Size: 12-inch • Power Rating: 20W RMS • Sensitivity: 96dB • Frequency Response: 75-5kHz • Impedance: 8 or 16 ohm • Magnet: 35 oz. Ceramic • Voice Coil: 1.75" Round Copper • Frame: Pressed Steel



Bass Series

PULSE 10

Size: 10-inch • Power Rating: 200W RMS • Sensitivity: 94dB • Frequency Response: 45-3.5kHz • Impedance: 8 ohm • Magnet: Ferrite • Voice Coil: 2.0" Round Copper • Frame: Pressed Steel • Kevlar-loaded paper cone with cloth-sealed surround



PULSE 12

Size: 12-inch • Power Rating: 200W RMS • Sensitivity: 94dB • Frequency Response: 45-3.5kHz • Impedance: 8 ohm • Magnet: Ferrite • Voice Coil: 2.0" Round Copper • Frame: Pressed Steel • Kevlar-loaded paper cone with cloth-sealed surround



PULSE 15

Size: 15-inch • Power Rating: 400W RMS • Sensitivity: 96dB • Frequency Response: 40-3.5kHz • Impedance: 8 ohm • Magnet: Ferrite • Voice Coil: 3.0" Round Copper • Frame: Pressed Steel • Kevlar-loaded paper cone with cloth-sealed surround



21" Subwoofers



NTR21-5010JD

Size: 21-inch • Power Rating: 1600W RMS • Sensitivity: 98dB • Frequency Response: 30-3kHz • Impedance: 8 ohm • Magnet: Neodymium • Voice Coil: 5" Round Copper • Frame: Cast Aluminum

18" Subwoofers



CF18VJD

Size: 18-inch • Power Rating: 1600W RMS • Sensitivity: 97dB • Frequency Response: 25-1500Hz • Impedance: 8 ohm • Weight: 50.6 lb/23kg • Voice Coil: 5" inside/outside • Frame: Cast Aluminum • Magnet: Ferrite



CF1840JD

Size: 18-inch • Power Rating: 1200W RMS • Sensitivity: 95dB • Frequency Response: 30-2500Hz • Impedance: 8 ohm • Weight: 25.5 lb/11.6kg • Voice Coil: 4" inside/outside • Frame: Cast Aluminum • Magnet: 112 oz. Ferrite



FTR18-4080HDX

Size: 18-inch • Power Rating: 1000W RMS • Sensitivity: 95dB • Frequency Response: 30-2.5kHz • Impedance: 8 ohm • Magnet: 110 oz. Ferrite • Voice Coil: 4" inside/outside • Frame: Cast Aluminum • Replacement for EAW LC18-4007-8.



FTR18-4080FD

Size: 18-inch • Power Rating: 1000W RMS • Sensitivity: 97dB • Frequency Response: 30-2.5kHz • Impedance: 8 ohm • Magnet: 110 oz. Ferrite • Voice Coil: 4" inside/outside • Frame: Cast Aluminum



FTR18-4080F

Size: 18-inch • Power Rating: 600W RMS • Sensitivity: 97dB • Frequency Response: 30-3kHz • Impedance: 8 ohm • Magnet: 110 oz. Ferrite • Voice Coil: 4" inside/outside • Frame: Cast Aluminum

15" Subwoofers



FTR15-4080HDX

Size: 15-inch • Power Rating: 1000W RMS • Sensitivity: 96dB • Frequency Response: 40-2.5kHz • Impedance: 8 ohm • Magnet: 110 oz. Ferrite • Voice Coil: 4" inside/outside • Frame: Cast Aluminum

15" Bass/Mid-Bass



FTR15-4080FD

Size: 15-inch • Power Rating: 1000W RMS • Sensitivity: 97dB • Frequency Response: 35-2.5kHz • Impedance: 8 ohm • Magnet: 110 oz. Ferrite • Voice Coil: 4" inside/outside • Frame: Cast Aluminum



FTR15-4080F

Size: 15-inch • Power Rating: 600W RMS • Sensitivity: 97dB • Frequency Response: 35-3kHz • Impedance: 8 ohm • Magnet: 110 oz. Ferrite • Voice Coil: 4" inside/outside • Frame: Cast Aluminum



NEODYMIUM

NTR15-3018E

Size: 15-inch • Power Rating: 450W RMS • Sensitivity: 98dB • Frequency Response: 30-3kHz • Impedance: 8 ohm • Magnet: Neodymium • Voice Coil: 3" edgewound • Frame: Cast Aluminum



FTR15-3070C

Size: 15-inch • Power Rating: 400W RMS • Sensitivity: 99dB • Frequency Response: 40-4kHz • Impedance: 8 ohm • Magnet: 81 oz. Ferrite • Voice Coil: 3" inside/outside • Frame: Cast Aluminum



TF1530

Size: 15-inch • Power Rating: 400W RMS • Sensitivity: 99dB • Frequency Response: 40-3kHz • Impedance: 8 ohm • Magnet: 86 oz. Ferrite • Voice Coil: 3" Round Copper • Frame: Pressed Steel



TF1525E

Size: 15-inch • Power Rating: 300W RMS • Sensitivity: 98dB • Frequency Response: 40-3kHz • Impedance: 8 ohm • Magnet: 42 oz. Ferrite • Voice Coil: 2.5" Edgewound Copper • Frame: Pressed Steel



NEODYMIUM

TN1525

Size: 15-inch • Power Rating: 250W RMS • Sensitivity: 100dB • Frequency Response: 45-3kHz • Impedance: 8 ohm • Magnet: Neodymium • Voice Coil: 2.5" Round Copper • Frame: Pressed Steel



TF1520

Size: 15-inch • Power Rating: 150W RMS • Sensitivity: 96dB • Frequency Response: 45-4kHz • Impedance: 8 ohm • Magnet: 40 oz. Ferrite • Voice Coil: 2" Round Copper • Frame: Pressed Steel

Prices and specs may change without notice. Not responsible for typographical errors.

12" Subwoofers



FTR12 4080HDX

Size: 12-inch • Power Rating: 1000W RMS • Sensitivity: 93dB • Frequency Response: 47-3kHz • Impedance: 8 ohm • Magnet: 110 oz. Ferrite • Voice Coil: 4" Round Copper • Frame: Cast Aluminum

12" Bass/Mid-Bass



FTR12 3070C

Size: 12-inch • Power Rating: 350W RMS • Sensitivity: 96dB • Frequency Response: 40-4kHz • Impedance: 8 ohm • Magnet: 81 oz. Ferrite • Voice Coil: 3" Round Copper • Frame: Cast Aluminum

NEODYMIUM



NTR12-3018D

Size: 12-inch • Power Rating: 350W RMS • Sensitivity: 98dB • Frequency Response: 50-4kHz • Impedance: 8 ohm • Unit Weight: 5.7 lb. • Voice Coil: 3" Round Copper • Frame: Cast Aluminum



TF 1230

Size: 12-inch • Power Rating: 350W RMS • Sensitivity: 94dB • Frequency Response: 45-3kHz • Impedance: 8 ohm • Magnet: 48 oz. Ferrite • Voice Coil: 3" Round Copper • Frame: Pressed Steel



TF 1230S

Size: 12-inch • Power Rating: 300W RMS • Sensitivity: 96dB • Frequency Response: 50-4kHz • Impedance: 8 ohm • Magnet: 60 oz. Ferrite • Voice Coil: 3" Edgewound Copper Clad Aluminum • Frame: Pressed Steel



TF1225E

Size: 12-inch • Power Rating: 300W RMS • Sensitivity: 96dB • Frequency Response: 50-3kHz • Impedance: 8 ohm • Magnet: 50 oz. Ferrite • Voice Coil: 2.5" Edgewound Copper • Frame: Pressed Steel

NEODYMIUM



TN 1225

Size: 12-inch • Power Rating: 250W RMS • Sensitivity: 97dB • Frequency Response: 50-4kHz • Impedance: 8 ohm • Magnet: Neodymium • Voice Coil: 2.5" Round Copper • Frame: Pressed Steel



TF1220

Size: 12-inch • Power Rating: 150W RMS • Sensitivity: 97dB • Frequency Response: 60-4kHz • Impedance: 8 ohm • Unit Weight: 11 lb. • Voice Coil: 2" Round Copper • Frame: Pressed Steel

NEODYMIUM



TF1218

Size: 12-inch • Power Rating: 100W RMS • Sensitivity: 97dB • Frequency Response: 60-4.5kHz • Impedance: 8 ohm • Unit Weight: 6.0 lb. • Voice Coil: 1.75" Round Copper • Frame: Pressed Steel

10" Bass/Mid-Bass



NTR10-2520D

Size: 10-inch • Power Rating: 250W RMS • Sensitivity: 96dB • Frequency Response: 55-3.5kHz • Impedance: 8 ohm • Unit Weight: 4.89 lb. • Voice Coil: 2.5" Round Copper • Frame: Cast Aluminum



TF1020

Size: 10-inch • Power Rating: 150W RMS • Sensitivity: 97dB • Frequency Response: 60-3kHz • Impedance: 8 ohm • Magnet: 42 oz. Ferrite • Voice Coil: 2" Round Copper • Frame: Pressed Steel



TF1018

Size: 10-inch • Power Rating: 100W RMS • Sensitivity: 96dB • Frequency Response: 70-6kHz • Impedance: 8 ohm • Unit Weight: 5.3 lb. • Voice Coil: 1.75" Round Copper • Frame: Pressed Steel

8"-5" All Purpose



FTR08-2011D

Size: 8-inch • Power Rating: 200W RMS • Sensitivity: 93dB • Frequency Response: 70-6kHz • Impedance: 8 ohm • Voice Coil: 2" Round Copper • Frame: Cast Aluminum • Weatherproof cone

NEODYMIUM



NTR08-2011D

Size: 8-inch • Power Rating: 200W RMS • Sensitivity: 92dB • Frequency Response: 70-6kHz • Impedance: 8 ohm • Unit Weight: 3.34 lb. • Voice Coil: 2" Round Copper • Frame: Cast Aluminum • Weatherproof cone



TF0818

Size: 8-inch • Power Rating: 100W RMS • Sensitivity: 94dB • Frequency Response: 70-6kHz • Impedance: 8 ohm • Magnet: 31 oz. Ferrite • Voice Coil: 1.75" Round Copper • Frame: Pressed Steel

NEODYMIUM



NTR06-1705B

Size: 6.5-inch • Power Rating: 150W RMS • Sensitivity: 96dB • Frequency Response: 150-7kHz • Impedance: 8 ohm • Unit Weight: 1.87 lb. • Voice Coil: 1.75" Round Copper • Frame: Cast Aluminum



TF0615MR

Size: 6-inch • Power Rating: 50W RMS • Sensitivity: 97dB • Frequency Response: 500-5kHz • Impedance: 8 ohm • Magnet: 17 oz. Ferrite • Voice Coil: 1.5" Round Copper • Frame: Pressed Steel • Dedicated mid-range speaker



TF0615

Size: 6-inch • Power Rating: 100W RMS • Sensitivity: 95dB • Frequency Response: 85-6kHz • Impedance: 8 ohm • Unit Weight: 3.1 lb. • Voice Coil: 1.5" Round Copper • Frame: Pressed Steel



TF0510

Size: 5-inch • Power Rating: 30W RMS • Sensitivity: 91dB • Frequency Response: 130-8kHz • Impedance: 8 ohm • Magnet: 13 oz. • Voice Coil: 1" Round Copper • Frame: Pressed Steel

Prices and specs may change without notice. Not responsible for typographical errors.

Coaxial/Twin-Cone Speakers



FTX0617

Size: 6.5-inch Coaxial • Power Rating: 150W RMS • Sensitivity: 92dB • Frequency Response: 110-20kHz • Impedance: 8 ohm • Unit Weight: 6.6 lb. • Voice Coil: 1.75" voice coil • Frame: Cast Aluminum

FTX0820

Size: 8-inch Coaxial • Power Rating: 200W RMS • Sensitivity: 94dB • Frequency Response: 110-20kHz • Impedance: 8 ohm • Unit Weight: 9.0 lb. • Voice Coil: 2.0" voice coil • Frame: Cast Aluminum

FTX1225

Size: 12-inch Coaxial • Power Rating: 300W RMS • Sensitivity: 97dB • Frequency Response: 50-20kHz • Impedance: 8 ohm • Unit Weight: 13.0 lb. • Voice Coil: 2.5" Round Copper • Frame: Cast Aluminum

FTX1530

Size: 15-inch Coaxial • Power Rating: 400W RMS • Sensitivity: 97dB • Frequency Response: 40-20kHz • Impedance: 8 ohm • Unit Weight: 14.3 lb. • Voice Coil: 3.0" Edgewound Copper Clad Aluminum • Frame: Cast Aluminum

K12H-100TC

Size: 12-inch Twin Cone • Power Rating: 100W RMS • Sensitivity: 97dB • Frequency Response: 50-10kHz • Impedance: 8 ohm • Unit Weight: 10 lb. • Voice Coil: 1.75" Round Copper • Frame: Stamped Steel

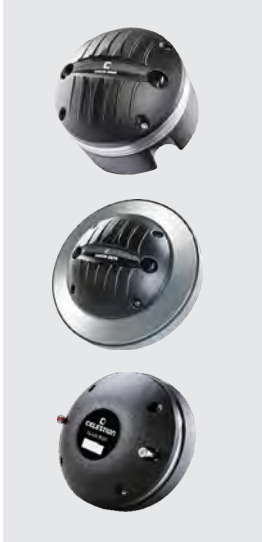
K12H-200TC

Size: 12-inch Twin Cone • Power Rating: 200W RMS • Sensitivity: 98dB • Frequency Response: 50-10kHz • Impedance: 8 ohm • Unit Weight: 11 lb. • Voice Coil: 2.0" Round Copper • Frame: Stamped Steel

TF-1225CX

Size: 12-inch Coaxial • Power Rating: 200W RMS • Sensitivity: 97dB • Frequency Response: 40-20kHz • Impedance: 8 ohm • Unit Weight: 10.1 lb. • Voice Coil: 2.5" Round Copper • Frame: Stamped Steel • Neodymium HF driver

2" Exit Compression Drivers



CDX20-3000

NEODYMIUM

Size: 2-inch exit • Power Rating: 75W RMS • Sensitivity: 107dB • Frequency Response: 500-18kHz • Impedance: 8 ohm • Magnet: Neodymium • Voice Coil: 3" Edgewound Copper Clad Aluminum • Diaphragm: Titanium

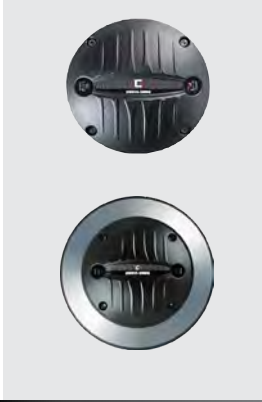
CDX20-3075

Size: 2-inch exit • Power Rating: 75W RMS • Sensitivity: 107dB • Frequency Response: 500-18kHz • Impedance: 8 ohm • Unit Weight: 10.6 lb. • Voice Coil: Edgewound 3" Copper Clad Aluminum • Diaphragm: Titanium • Magnet: Ferrite

CDX20-3020

Size: 2-inch exit • Power Rating: 100W RMS • Sensitivity: 107dB • Frequency Response: 500-18kHz • Impedance: 8 ohm • Unit Weight: 10.8 lb. • Voice Coil: Edgewound 3" Copper Clad Aluminum • Diaphragm: Titanium • Magnet: Ferrite

1.4" Exit Compression Drivers



CDX14-3050

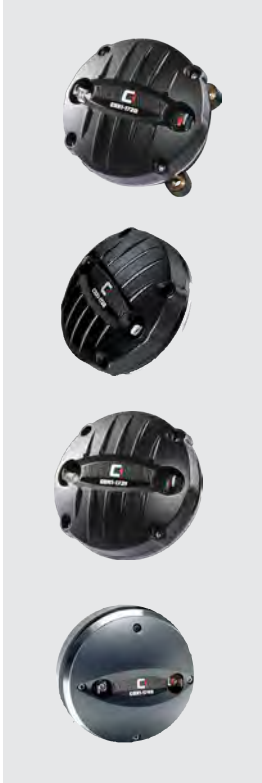
NEODYMIUM

Size: 1.4-inch exit • Power Rating: 75W RMS • Sensitivity: 106.5dB • Frequency Response: 500-18kHz • Impedance: 8 ohm • Magnet: Neodymium • Voice Coil: 3" Edgewound Copper Clad Aluminum • Diaphragm: Titanium

CDX14-3060

Size: 1.4-inch exit • Power Rating: 75W RMS • Sensitivity: 106.5dB • Frequency Response: 500-18kHz • Impedance: 8 ohm • Unit Weight: 10.75 lb. • Voice Coil: 3" Edgewound Copper Clad Aluminum • Magnet: Ferrite • Diaphragm: Titanium

1" Exit Compression Drivers



CDX1-1720

NEODYMIUM

Size: 1-inch exit • Power Rating: 50W RMS • Sensitivity: 107dB • Frequency Response: 800-20kHz • Impedance: 8 ohm • Magnet: Neodymium • Voice Coil: 1.75" Edgewound Copper Clad Aluminum • Diaphragm: Titanium

CDX1-1730

NEODYMIUM

Size: 1-inch exit • Power Rating: 40W RMS • Sensitivity: 110dB • Frequency Response: 1200-20kHz • Impedance: 8 ohm • Magnet: Neodymium • Voice Coil: 1.75" Edgewound Copper Clad Aluminum • Diaphragm: PETP Film

CDX1-1731

NEODYMIUM

Size: 1-inch exit • Power Rating: 40W RMS • Sensitivity: 110dB • Frequency Response: 1200-20kHz • Impedance: 8 ohm • Magnet: Neodymium • Voice Coil: 1.75" Edgewound Copper Clad Aluminum • Diaphragm: PETP Film • Screw-on

CDX1-1745

Size: 1-inch exit • Power Rating: 40W RMS • Sensitivity: 110dB • Frequency Response: 1200-20kHz • Impedance: 8 ohm • Magnet: Ferrite • Voice Coil: 1.75" Edgewound Copper Clad Aluminum • Diaphragm: PETP Film

Full-Range Speakers



AN3510

NEODYMIUM

Size: 3.5-inch • Power Rating: 35W RMS • Sensitivity: 87dB • Frequency Response: 98-18.5kHz • Impedance: 8 ohm • Unit Weight: 5.65 oz. • Voice Coil: 1" Round Copper

AN2775

NEODYMIUM

Size: 2.75-inch • Power Rating: 20W RMS • Sensitivity: 84dB • Frequency Response: 190-20kHz • Impedance: 8 ohm • Unit Weight: 3.53 oz. • Voice Coil: 0.75" Round Copper

AN2075

NEODYMIUM

Size: 2-inch • Power Rating: 20W RMS • Sensitivity: 80dB • Frequency Response: 160-19kHz • Impedance: 8 ohm • Unit Weight: 3.4 oz. • Voice Coil: 0.75" Round Copper

1" Exit Compression Drivers



CDX1-1746

Size: 1-inch exit screw-on • Power Rating: 40W RMS • Sensitivity: 110dB • Frequency Response: 1200-20kHz • Impedance: 8 ohm • Magnet: Ferrite • Voice Coil: 1.75" Edgewound Copper Clad Aluminum • Diaphragm: PETP Film



CDX1-1747

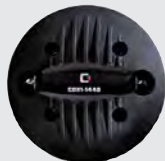
Size: 1-inch exit • Power Rating: 60W RMS • Sensitivity: 110dB • Frequency Response: 1000-20kHz • Impedance: 8 ohm • Unit Weight: 5.1 lb. • Voice Coil: 1.75" Edgewound Copper Clad Aluminum • Diaphragm: Polyimide



CDX1-1430

Size: 1-inch exit • Power Rating: 50W RMS • Sensitivity: 108dB • Frequency Response: 2000-20kHz • Impedance: 8 ohm • Magnet: Neodymium • Voice Coil: 1.4" Copper Clad Aluminum • Diaphragm: Aluminum

NEODYMIUM



CDX1-1440 (No single pack)

Size: 1-inch exit • Power Rating: 25W RMS • Sensitivity: 106dB • Frequency Response: 2000-20kHz • Impedance: 8 ohm • Magnet: Ferrite • Voice Coil: 1.4" Copper Clad Aluminum • Diaphragm: Titanium



CDX1-1446

Size: 1-inch exit screw-on • Power Rating: 20W RMS • Sensitivity: 106dB • Frequency Response: 1500-20kHz • Impedance: 8 ohm • Unit Weight: 1.1 lb. • Voice Coil: 1.4" Copper Clad Aluminum • Diaphragm: PETP Film



CDX1-1445

Size: 1-inch exit • Power Rating: 20W RMS • Sensitivity: 106dB • Frequency Response: 1500-20kHz • Impedance: 8 ohm • Magnet: Ferrite • Voice Coil: 1.4" Copper Clad Aluminum • Diaphragm: PETP Film



CDX1-1425

Size: 1-inch exit • Power Rating: 25W RMS • Sensitivity: 108dB • Frequency Response: 2000-20kHz • Impedance: 8 ohm • Magnet: Neodymium • Voice Coil: 1.4" Copper Clad Aluminum • Diaphragm: Aluminum

NEODYMIUM



CDX1-1415

Size: 1-inch exit • Power Rating: 20W RMS • Sensitivity: 104dB • Frequency Response: 2000-20kHz • Impedance: 8 ohm • Magnet: Neodymium • Voice Coil: 1.4" Copper Clad Aluminum • Diaphragm: Aluminum

NEODYMIUM



CDX1-1010

Size: 1-inch exit screw-on • Power Rating: 15W RMS • Sensitivity: 107dB • Frequency Response: 1500-20kHz • Impedance: 8 ohm • Unit Weight: 1.8 lb. • Voice Coil: 1.0" Copper Clad Aluminum • Diaphragm: PETP Film



CDX1-1070

Size: 1-inch exit bolt-on • Power Rating: 12W RMS • Sensitivity: 106dB • Frequency Response: 1500-20kHz • Impedance: 8 ohm • Unit Weight: 1.5 lb. • Voice Coil: 1.0" Copper Clad Aluminum • Diaphragm: PETP Film

NEW!

Recone kits Available, Please Inquire

Replacement Diaphragms



Celestion T5500/R

Replacement Diaphragm for Celestion HF50, 8 ohm.



Celestion T5503

Replacement Diaphragm that fits CDX1-1415, CDX1-1425, CDX1-1430 and the HF Driver in QSC HPR1221 Speaker Box - 8 ohm. Also fits Yorkville NX55P, NX300, YX10, YX12, YX12M, YX15, YX15P, and YX215 cabs.



Celestion T5510

Celestion replacement diaphragm that fits Fits CDX1 1730, 1731, 1745, 1746. Also fits Harbinger HP series cabinets - 8 ohm



Celestion T5526

Celestion 3" Titanium Diaphragm that fits CDX14-3050, CDX14-3060, CDX20-3000, CDX20-3075 - 8 ohm



Celestion T5549

Celestion PETP replacement diaphragm that fits Celestion CDX1-1445 and CDX1-1446 HF drivers - 8 ohm

No Photo Available

Celestion T5555

Celestion replacement diaphragm that fits CDX1-1720.

No Photo Available

Celestion T5572

Celestion replacement diaphragm that fits CDX2-1747.

Horns



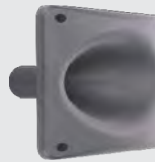
H1-7050

- 1-inch exit bolt-on
- Cast aluminum horn flare
- 70° x 50°; 1.5kHz cut-off
- 7.1"W x 7.1"H x 3.5"D
- Cut-out: 6.1" x 6.1"



H1-9040P

- 1-inch exit bolt-on
- Reinforced polymer horn flare
- 90° x 40°; 1.5kHz cut-off
- 12.5"W x 7.8"H x 8.2"D
- Cut-out: 6.5" x 10.2"



H1SC-8050

- 1-inch exit screw-on
- Reinforced ABS horn flare
- 80° x 50°; 1.5kHz cut-off
- 7.0"W x 7.0"H x 3.46"D
- Cut-out: 6.1" x 6.1"



H1SC-9040

- 1-inch exit screw-on
- Reinforced ABS horn flare
- 90° x 40°; 1.5kHz cut-off
- 11.7"W x 4.1"H x 5.7"D
- Cut-out: 9.8" x 2.9"

21" Subwoofer

**21NLW9601**

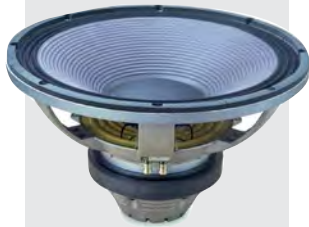
Size: 21" • Power Rating: 1800W AES • Sensitivity: 98dB
Impedance: 8 Ohms • Voice Coil: 5.3" (135mm) • Freq. Response: 25-2kHz • Frame: Cast Aluminum

NEODYMIUM

**21LW1400**

Size: 21" • Power Rating: 1500W AES • Sensitivity: 99dB
• Impedance: 8 Ohms • Voice Coil: 4" • Freq. Response: 24-2kHz • Frame: Cast Aluminum

18" Subwoofer

**18TLW3000**

Size: 18" • Power Rating: 1800W AES • Sensitivity: 95dB
Impedance: 8 Ohms • Voice Coil: 4" (100mm) • Freq. Response: 30-2kHz • Frame: Cast Aluminum

**18NLW9601**

Size: 18" • Power Rating: 1800W AES • Sensitivity: 97dB
Impedance: 8 Ohms • Voice Coil: 5.32" (135mm)
Freq. Response: 30-2.5kHz • Frame: Cast Aluminum

NEODYMIUM

**18iD**

Size: 18" • Power Rating: 1800W AES • Sensitivity: 95dB
Impedance: 2 Ohms • Voice Coil: 5.31" • Freq. Response: 30-2.5kHz • Frame: Cast Aluminum

NEODYMIUM

**18NLW9400**

Size: 18" • Power Rating: 1200W AES • Sensitivity: 98dB
Impedance: 8 Ohms • Voice Coil: 4" • Freq. Response: 30-2500Hz • Frame: Cast Aluminum

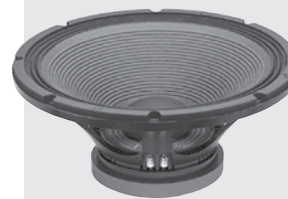
NEODYMIUM

**18LW2500**

Size: 18" • Power Rating: 1600W AES • Sensitivity: 95dB
Impedance: 8 Ohms • Voice Coil: 4" • Freq. Response: 30-1kHz • Frame: Cast Aluminum

**18LW2400**

Size: 18" • Power Rating: 1200W AES • Sensitivity: 98dB
Impedance: 8 Ohms • Voice Coil: 4" • Freq. Response: 30-2.5kHz • Frame: Cast Aluminum

**18LW1400**

Size: 18" • Power Rating: 1000W AES • Sensitivity: 98dB
Impedance: 8 Ohms • Voice Coil: 4" • Freq. Response: 28-2.5kHz • Frame: Cast Aluminum

15" Subwoofer

**15LW2400**

Size: 15" • Power Rating: 1,200W AES • Sensitivity: 97dB
• Impedance: 8 Ohms • Voice Coil: 4" • Freq. Response: 40-2.2kHz • Frame: Cast Aluminum

**15NLW9401**

Size: 15" • Power Rating: 1,200W AES • Sensitivity: 97.5dB
• Impedance: 8 Ohms • Voice Coil: 4" • 100mm • Freq. Response: 37-2.3kHz • Frame: Cast Aluminum

NEODYMIUM

15" Bass/Mid-Bass

**15MB1000**

Size: 15" • Power Rating: 850W AES • Sensitivity: 98dB
• Impedance: 8 Ohms • Voice Coil: 4" • Freq. Response: 45-5.1kHz • Frame: Cast Aluminum

**15MB700**

Size: 15" • Power Rating: 400W AES • Sensitivity: 103dB
• Impedance: 8 Ohms • Voice Coil: 3" • Freq. Response: 45-4.3kHz • Frame: Cast Aluminum

12" Bass/Mid-Bass

**12LW1400**

Size: 12" • Power Rating: 900W AES • Sensitivity: 96dB
• Impedance: 8 Ohms • Voice Coil: 4" • Freq. Response: 51-4kHz • Frame: Cast Aluminum

**12MB1000**

Size: 12" • Power Rating: 600W AES • Sensitivity: 102dB
• Impedance: 8 Ohms • Voice Coil: 4" • Freq. Response: 80-3.5kHz • Frame: Cast Aluminum

**12W750**

Size: 12" • Power Rating: 600W AES • Sensitivity: 97dB
• Impedance: 8 Ohms • Voice Coil: 3" • Freq. Response: 50-4.6kHz • Frame: Cast Aluminum

Prices and specs may change without notice. Not responsible for typographical errors.

12" Bass/Mid-Bass

**12MB700**

Size: 12" • Power Rating: 450W AES • Sensitivity: 101.5dB
• Impedance: 8 Ohms • Voice Coil: 3" • Freq. Response:
60-5kHz • Frame: Cast Aluminum

**12ND610**

Size: 12" • Power Rating: 450W AES • Sensitivity: 102dB
• Impedance: 8 Ohms • Voice Coil: 3" • Freq. Response:
80-5.5kHz • Frame: Cast Aluminum

NEODYMIUM

10" Bass/Mid-Bass

**10NW750**

Size: 10" • Power Rating: 450W AES • Sensitivity: 94dB
• Impedance: 8 Ohms • Voice Coil: 3" • Freq. Response:
50-5kHz • Frame: Cast Aluminum

NEODYMIUM

**10M600**

Size: 10" • Power Rating: 450W AES • Sensitivity: 102dB
• Impedance: 8 Ohms • Voice Coil: 3" • Freq. Response:
55-4.5kHz • Frame: Cast Aluminum

**10NDA610**

Size: 10" • Power Rating: 400W AES • Sensitivity: 103dB
Impedance: 8 Ohms • Voice Coil: 3" • Freq. Response: 100-
6.1kHz • Frame: Cast Aluminum

NEODYMIUM

**10NMB420**

Size: 10" • Power Rating: 350W AES • Sensitivity: 99dB
Impedance: 8 Ohms • Voice Coil: 2.5" • Freq. Response:
65-5kHz • Frame: Cast Aluminum

NEODYMIUM

**10NW650**

Size: 10" • Power Rating: 300W AES • Sensitivity: 96dB
Impedance: 8 Ohms • Voice Coil: 2.5" • Freq. Response:
Response: 60-6kHz • Frame: Cast Aluminum

NEODYMIUM

8" Bass/Mid-Bass

**8NMB750**

Size: 8" • Power Rating: 350W AES • Sensitivity: 93.5dB •
Impedance: 8 Ohms • Voice Coil: 2.95" • Freq. Response:
56-7kHz • Frame: Cast Aluminum

NEODYMIUM

**8NMB650**

Size: 8" • Power Rating: 300W AES • Sensitivity: 96dB •
Impedance: 8 Ohms • Voice Coil: 2.5" • Freq. Response:
55-6.3kHz • Frame: Cast Aluminum

NEODYMIUM

8" Bass/Mid-Bass

**8MB500**

Size: 8" • Power Rating: 280W AES • Sensitivity: 95dB •
Impedance: 8 Ohms • Voice Coil: 2.0" • Freq. Response:
60-4.5kHz • Frame: Cast Aluminum

**8NW650**

Size: 8" • Power Rating: 300W AES • Sensitivity: 96dB •
Impedance: 8 Ohms • Voice Coil: 2.5" • Freq. Response:
55-6.3kHz • Frame: Cast Aluminum

NEODYMIUM

**8NMB420**

Size: 8" • Power Rating: 250W AES • Sensitivity: 95dB •
Impedance: 8 Ohms • Voice Coil: 2.0" • Freq. Response:
60-5.5kHz • Frame: Cast Aluminum

NEODYMIUM

**8M400**

Size: 8" • Power Rating: 250W AES • Sensitivity: 100.5dB
• Impedance: 8 Ohms • Voice Coil: 2.0" • Freq. Response:
120-6.1kHz • Frame: Cast Aluminum

6" Bass/Mid-Bass

**6NMB420**

Size: 6" • Power Rating: 280W AES • Sensitivity: 95dB
Impedance: 8 Ohms • Voice Coil: 2.0", 51mm • Freq.
Response: 60-5.5kHz • Frame: Cast Aluminum

NEODYMIUM

**6ND430**

Size: 6" • Power Rating: 200W AES • Sensitivity: 92.5dB
• Impedance: 8 Ohms • Voice Coil: 1.7" • Freq. Response:
63-5.5kHz • Frame: Cast Aluminum

NEODYMIUM

**6NM410**

Size: 6" • Power Rating: 180W AES • Sensitivity: 102dB
Impedance: 8 Ohms • Voice Coil: 1.7" • Freq. Response:
200-8kHz • Frame: Cast Aluminum • Replaces 6ND410.

NEODYMIUM

Co-Axial Speakers

**15NCX1000**

Size: 15" • Power Rating: 600W AES LF, 130W AES HF • Sensitivity:
96db/108 db • Impedance: 8 Ohms • Voice Coil: 4" LF, 4" HF •
Freq. Response: 44-20kHz • Resonant Freq.: 53 Hz • Frame: Cast
Aluminum • Magnet: Neodymium

NEODYMIUM

**12NCX750**

Size: 12" • Power Rating: 400W AES LF, 120W AES HF • Sensitivity:
97db/107 db • Impedance: 8 Ohms • Voice Coil: 3" LF, 2.4" HF •
Freq. Response: 60-18kHz • Resonant Freq.: 58 Hz • Frame: Cast
Aluminum • Magnet: Neodymium

NEODYMIUM

**8NCX650**

Size: 8" • Power Rating: 200W AES LF, 70W AES HF • Sensitivity:
91db/106 db • Impedance: 8 Ohms • Voice Coil: 2.5" LF, 1.75" HF •
Freq. Response: 60-20kHz • Resonant Freq.: 65 Hz • Frame: Cast
Aluminum • Magnet: Ferrite

Prices and specs may change without notice. Not responsible for typographical errors.

2" HF Compression Driver



ND2080

Size: 2" throat diameter • Power Rating: 100W RMS • Sensitivity: 110dB • Impedance: 8 Ohms • Voice Coil: 3" • Freq. Response: 500-20kHz • Crossover: 800 Hz.

NEODYMIUM



HD2080T

Size: 2" throat diameter • Power Rating: 100W RMS • Sensitivity: 109dB • Impedance: 8 Ohms • Voice Coil: 3"; Titanium diaphragm • Freq. Response: 500-20kHz • Crossover: 800 Hz.



ND2060

Size: 2" throat diameter • Power Rating: 80W RMS • Sensitivity: 110dB • Impedance: 8 or 16 Ohms • Voice Coil: 3" • Freq. Response: 500-20kHz • Crossover: 800 Hz.

NEODYMIUM

1.5" HF Compression Driver



ND4015Ti2

Size: 1.5" throat diameter • Power Rating: 160W RMS • Sensitivity: 113dB • Impedance: 8 Ohms • Voice Coil: 4" • Freq. Response: 800-20kHz • Crossover: 800 Hz.

NEODYMIUM

1.4" HF Compression Driver



ND1460

Size: 1.4" throat diameter • Power Rating: 200W RMS • Sensitivity: 109dB • Impedance: 8 Ohms • Voice Coil: 3" • Freq. Response: 500-20kHz • Crossover: 800 Hz.

NEODYMIUM



ND35T

Size: 1.4" throat diameter • Power Rating: 120W RMS • Sensitivity: 112dB • Impedance: 8 Ohms • Voice Coil: 3"; Pure Titanium diaphragm • Freq. Response: 800-20kHz • Crossover: 1200 Hz.

NEODYMIUM

1" HF Compression Driver



HD1050

Size: 1" throat diameter • Power Rating: 50W RMS • Sensitivity: 110dB • Impedance: 8 Ohms • Voice Coil: 1-3/4"; Titanium diaphragm • Freq. Response: 1600-20kHz • Crossover: 1600 Hz.

NEODYMIUM



ND1090

Size: 1" throat diameter • Power Rating: 50W RMS • Sensitivity: 110dB • Impedance: 8 Ohms • Voice Coil: 1-3/4"; Titanium PEN diaphragm • Freq. Response: 1600-20kHz • Crossover: 1600 Hz.

NEODYMIUM



NSD1095N

Size: 1" throat diameter • Power Rating: 50W RMS • Sensitivity: 110dB • Impedance: 8 Ohms • Voice Coil: 1-3/4"; TiN coated Titanium diaphragm • Freq. Response: 1600-20kHz • Crossover: 1600 Hz.

NEODYMIUM



HD1050

Size: 1" throat diameter • Power Rating: 50W RMS • Sensitivity: 107db • Impedance: 8 Ohms • Voice Coil: 1.75"; Titanium PEN diaphragm • Freq. Response: 1600-20kHz • Crossover: 1600 Hz.



HD125

Size: 1" throat diameter • Power Rating: 25W RMS • Sensitivity: 109db • Impedance: 8 Ohms • Voice Coil: 1"; polyester diaphragm • Freq. Response: 200-18kHz • Crossover: 2500 Hz.

Horn/Driver Horn Combos



XD125

Size: 1" throat diameter • Power Rating: 50W RMS • Sensitivity: 108db • Voice Coil: 1" • Freq. Response: 2-18kHz • Crossover: 2.5k Hz.

Horns



XR2064

Size: 2" throat diameter • Coverage: 60°H x 40°V • Material: Aluminum • Crossover: 800 Hz.



XG14

Size: 1.4" throat diameter • Coverage: 60°H x 50°V • Material: Polyurethane • Crossover: 1500 Hz.



XT1464

Size: 1.4" throat diameter • Coverage: 60°H x 50°V • Material: Polyurethane • Crossover: 1500 Hz.



XR1464

Size: 1.4" throat • Coverage: 60°H x 40°V • Material: Aluminum • Crossover: 800 Hz. • 3 or 4-bolt patterns



XR1064

Size: 1" throat • Coverage: 60°H x 40°V • Material: Aluminum • Crossover: 1200 Hz. • 3 or 4-bolt patterns



XT120

Size: 1" throat diameter • Coverage: 90°H x 60°V • Material: Polyurethane • Crossover: 1500 Hz.



XT1086

Size: 1" throat diameter • Coverage: 90°H x 60°V • Material: Aluminum • Crossover: 1200 Hz. • 3 or 4-bolt patterns

Prices and specs may change without notice. Not responsible for typographical errors.

18" Subwoofer



Omega Pro 18A/18C

Size: 18" • Power Rating: 800W RMS • Sensitivity: 97db • Impedance: 4(C) or 8(A) Ohms • Voice Coil: 4", 101.6mm • Freq. Response: 40-800 Hz • Resonant Freq.: 25 Hz • Magnet Weight: 109 oz • Frame: Cast Aluminum
Replacement speaker for Mackie SWA1801.



FTR18-4080HDX

Size: 18-inch • Power Rating: 1000W RMS • Sensitivity: 95dB • Frequency Response: 30-2.5kHz • Impedance: 8 ohm • Magnet: 110 oz. Ferrite • Voice Coil: 4" Round Copper • Frame: Cast Aluminum
Replacement for EAW LC18-4004-8.



Impero 18A/18C

Size: 18" • Power Rating: 1200W RMS • Sensitivity: 94.5db • Impedance: 4(C) or 8(A) Ohms • Voice Coil: 4", 101.6mm • Freq. Response: 36-820 Hz • Resonant Freq.: 31.8 Hz • Magnet Weight: 109 oz • Frame: Cast Aluminum



C18-650ELv2

Size: 18" • Power Rating: 1200W AES • Sensitivity: 98db • Impedance: 8 Ohms • Voice Coil: 4" CCA-R • Freq. Response: 30-200Hz • Resonant Freq.: 46 Hz • Frame: Cast aluminum • Ideal replacement for Mackie HD1801

15" Subwoofer



Kappa Pro 15LFA-2

Size: 15" • Power Rating: 600W RMS • Sensitivity: 97.8db • Impedance: 8 Ohms • Voice Coil: 3", 76.2mm • Freq. Response: 38-1.8kHz • Resonant Freq.: 35 Hz • Magnet Weight: 120 oz • Frame: Cast Aluminum

15" Bass/Mid-Bass



F1011502621EAW

Size: 15" • Power Rating: 300W RMS • Frequency Response: 45-3.7kHz • Sensitivity: 98db • Impedance: 8 ohms • Voice Coil: 2.5" • Resonant Frequency: 35 Hz • Weight: 12 lbs.

Replacement speaker for Mackie Thump 15" woofer, 3" voice coil, stamped steel frame. Also fits Mackie 0015276 15" Woofer (LC-15/3007) used in HD1501, SWA1501, TH15A, S215 and S225.

12" Bass/Mid-Bass



Definimax 4012HO

Size: 12" • Power Rating: 600W RMS • Sensitivity: 94db • Impedance: 8 Ohms • Voice Coil: 4", 101.6mm • Freq. Response: 49-2.5kHz • Resonant Freq.: 46 Hz • Magnet Weight: 109 oz • Frame: Cast Aluminum



F01011201501EAW

Size: 12" • Power Rating: 400W RMS • Frequency Response: 54-5kHz • Sensitivity: 90db • Impedance: 8 ohms • Voice Coil: 3" • Resonant Frequency: 55 Hz • Weight: 12 lbs.

Perfect replacement speaker for Mackie C300 12" woofer, 3" voice coil, cast aluminum frame. M1275W, LC12-3009-8. Special size to fit C300 cabinet. Ideal replacement for the Alto TS112A speaker.

10" Bass/Mid-Bass



Beta 10A

Size: 10" • Power Rating: 250W RMS • Sensitivity: 97db • Impedance: 8 Ohms • Voice Coil: 2.0", 50.8mm • Freq. Response: 51-3.8kHz • Resonant Freq.: 53 Hz • Magnet Weight: 34 oz. • Frame: Stamped Steel

Ideal replacement for Mackie SRM-350.

6"-3" Bass/Mid-Bass



SN6-100N

NEODYMIUM

Size: 6.5" (165mm) • Power Rating: 100W AES • Sensitivity: 90db • Impedance: 8 Ohms • Voice Coil: 1.2" SV-W • Freq. Response: 80-3kHz • Resonant Freq.: 58 Hz • Frame: Cast aluminum

1" HF Compression Driver



P Audio F01020105211WAT

Horn driver for Mackie 15" Thump Speakers. • Size: 1" throat diameter • Power Rating: 50W RMS • Sensitivity: 109db • Impedance: 8 Ohms • Voice Coil: 1-3/4" • Freq. Response: 3-20kHz • Crossover: 3000 Hz. Fits Mackie Thump, with adapter plate. DC10-1501-16. Original series 4 ohm tweeter. Will not work with newer 8 ohm version.

Replacement Diaphragms



RCF M33
Replacement diaphragm 154100007 fits the Mackie Monitor 8 Speaker and others, 8 ohms.



RCF M73
High frequency replacement diaphragms for the N252N, N255N drivers, Yorkville CM1260 Coliseum Series applicable to serial numbers prior to 102xxxx, Yorkville Y115 Performance Series applicable to serial numbers prior to 104xxxx, and the drivers in Mackie PA261 & SR1530 Speaker Cabinets, 8 ohms.



RCF M81
This replacement diaphragm fits the N450 driver from RCF. RCF M81 replacement diaphragm fits the Mackie M44TI driver. This is also known as PN 15410081. This diaphragm is used in loudspeaker cabinets manufactured by EAW, Yorkville and others, 8 ohms.



RDMMMD75
Replacement Diaphragm for EAW* / B&C Models: DM-5001, CD-5001, DM-5002, CD5002, DM-5003, DMS003, CD-5003, DM-5005, CD-5005, DE-75-8, MMD75-8, MMD75TN, DE75TN, DE82TN, DE-85-TN, DE72TN, also fits EAW CD3512 and DE72-8. 8 and 16 ohm.



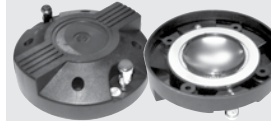
SD750N RD
Replacement Diaphragm for the SD750N High Frequency Compression Drivers, 8 ohm. Fits EAW DN14/3003-8, CD6001.



P Audio F05029000741PAA
Replacement diaphragm for the Mackie C300 Series high frequency driver - 8 ohms. Fits Mackie C300, SRM450v2, HD1221, 0032658, DC10-1801-8, and other High Frequency Drivers.



BMD440.8RD
Replacement diaphragm for the BMD440 & BMD450 HF Driver. They have titanium domes with edgewound voice coils and Nomex formers. This replacement diaphragm can be used in the P Audio model 440, BMD-440, BMD-440S, BMD-450, BMD-450S, and more. This replacement diaphragm is also used by many other manufacturers such as American Audio, Atlas, Berlinger, EAW, Gemini, TVI Audio, Mackie, and more. 8 ohm.



SND44.8RD
Replacement diaphragm for P Audio SND44 compression driver, Mackie 0013925, DN10/1704-8, DN10-1704-8, DN10 1704-8, Mackie SA1232Z, SA1521, SA1521Z, SA1530, SA1530Z, SA1532Z cabinet drivers, as well as others, 8 ohms.



Speakers, High Frequency Drivers, Replacement Diaphragms

18" Subwoofers



FTR18-4080HDX
Size: 18-inch • Power Rating: 1000W RMS • Sensitivity: 95dB
Frequency Response: 30-2.5kHz • Impedance: 8 ohm • Magnet: 110 oz. Ferrite • Voice Coil: 4" Round Copper • Frame: Cast Aluminum

12" Speakers



TF1020
Size: 10-inch • Power Rating: 150W RMS • Sensitivity: 97dB • Frequency Response: 60-3kHz • Impedance: 8 ohm • Magnet: 42 oz. Ferrite • Voice Coil: 2" Round Copper • Frame: Pressed Steel

12" Speakers



F01011209611EAW
Size: 12" • Power Rating: 400W RMS • Frequency Response: 52-5kHz • Sensitivity: 99db • Impedance: 8 ohms • Voice Coil: 3" • Resonant Frequency: 55 Hz • Weight: 10 lbs.

Perfect replacement speaker for Mackie SRM450v2 12" neodymium woofer, 3" voice coil, cast aluminum frame. A direct replacement for QSC HPR122i.



TF1220
Size: 12-inch • Power Rating: 150W RMS • Sensitivity: 97dB • Frequency Response: 60-4kHz • Impedance: 8 ohm • Unit Weight: 11 lb. • Voice Coil: 2" Round Copper • Frame: Pressed Steel



TN 1225
Size: 12-inch • Power Rating: 250W RMS • Sensitivity: 97dB • Frequency Response: 50-4kHz • Impedance: 8 ohm • Magnet: Neodymium • Voice Coil: 2.5" Round Copper • Frame: Pressed Steel

Replacement Diaphragms



Celestion T5503
Replacement Diaphragm that fits CDX1-1415, CDX1-1425, CDX1-1430 and the HF Driver in QSC HPR1221 Speaker Box - 8 ohm. Also fits Yorkville NX55P, NX300, YX10, YX12, YX12M, YX15, YX15P, and YX215 cabs.



Celestion T5510
Celestion replacement diaphragm that fits CDX1 1730, 1731, 1745, 1746. Also fits Harbinger HP series cabinets - 8 ohm

18" Subwoofers



18XL1800

NEODYMIUM

Size: 18" • Power Rating: 1600W AES • Sensitivity: 95db • Impedance: 8 Ohms • Voice Coil: 4" • Freq. Response: 30-1600Hz. • Resonant Freq.: 29 Hz. • Frame: Cast Aluminum • Magnet: Neodymium



18XL1600

NEODYMIUM

Size: 18" • Power Rating: 1600W AES • Sensitivity: 98db • Impedance: 8 Ohms • Voice Coil: 4" • Freq. Response: 30-1500Hz. • Resonant Freq.: 32 Hz. • Frame: Cast Aluminum • Magnet: Neodymium



18HW1070

Size: 18" • Power Rating: 1600W AES • Sensitivity: 97db • Impedance: 8 Ohms • Voice Coil: 4" • Freq. Response: 30-1500Hz. • Resonant Freq.: 32 Hz. • Frame: Cast Aluminum • Magnet: Ferrite

15" Speakers



15PR400

NEODYMIUM

Size: 15" • Power Rating: 400W AES • Sensitivity: 99db • Impedance: 8 Ohms • Voice Coil: 3" • Freq. Response: 35-4000Hz. • Resonant Freq.: 35 Hz. • Frame: Cast Aluminum • Magnet: Neodymium



15FH520

NEODYMIUM

Size: 15" • Power Rating: 600W AES • Sensitivity: 98db • Impedance: 8 Ohms • Voice Coil: 3" • Freq. Response: 40-4000Hz. • Resonant Freq.: 38 Hz. • Frame: Cast Aluminum • Magnet: Neodymium

12" Speakers



12HP1010

Size: 12" • Power Rating: 700W AES • Sensitivity: 96db • Impedance: 8 Ohms • Voice Coil: 4" • Freq. Response: 45-3150Hz. • Resonant Freq.: 45 Hz. • Frame: Cast Aluminum • Magnet: Ferrite



12PR310

Size: 12" • Power Rating: 300W AES • Sensitivity: 99db • Impedance: 8 Ohms • Voice Coil: 2.5" • Freq. Response: 50-4000Hz. • Resonant Freq.: 54 Hz. • Frame: Cast Aluminum • Magnet: Ferrite



12PR300

NEODYMIUM

Size: 12" • Power Rating: 300W AES • Sensitivity: 99db • Impedance: 8 Ohms • Voice Coil: 2.5" • Freq. Response: 50-5000Hz. • Resonant Freq.: 50 Hz. • Frame: Cast Aluminum • Magnet: Neodymium

10" Speakers



10PR300

NEODYMIUM

Size: 10" • Power Rating: 300W AES • Sensitivity: 98db • Impedance: 8 Ohms • Voice Coil: 2" • Freq. Response: 60-5000Hz. • Resonant Freq.: 60 Hz. • Frame: Cast Aluminum • Magnet: Neodymium

10" Speakers



10FH520

NEODYMIUM

Size: 10" • Power Rating: 600W AES • Sensitivity: 97db • Impedance: 8 Ohms • Voice Coil: 3" • Freq. Response: 60-4000Hz. • Resonant Freq.: 60 Hz. • Frame: Cast Aluminum • Magnet: Neodymium

8" Speakers



8PR200

NEODYMIUM

Size: 8" • Power Rating: 200W AES • Sensitivity: 95db • Impedance: 8 Ohms • Voice Coil: 2" • Freq. Response: 70-5000Hz. • Resonant Freq.: 58 Hz. • Frame: Cast Aluminum • Magnet: Neodymium



8FE200

Size: 8" • Power Rating: 130W AES • Sensitivity: 95db • Impedance: 8 Ohms • Voice Coil: 1.5" • Freq. Response: 60-5000Hz. • Resonant Freq.: 80 Hz. • Frame: Stamped Steel • Magnet: Ferrite

6" Speakers



6PR122

NEODYMIUM

Size: 6" • Power Rating: 120W AES • Sensitivity: 97db • Impedance: 8 Ohms • Voice Coil: 1.5" • Freq. Response: 125-10kHz. • Resonant Freq.: 110 Hz. • Frame: Cast Aluminum • Magnet: Neodymium



6FE200

Size: 6" • Power Rating: 130W AES • Sensitivity: 95db • Impedance: 8 Ohms • Voice Coil: 1.5" • Freq. Response: 85-6kHz. • Resonant Freq.: 120 Hz. • Frame: Stamped Steel • Magnet: Ferrite

Co-Axial Speakers



8HX230

Size: 8" • Power Rating: 250W AES LF, 30W AES HF • Sensitivity: 94db/105 db • Impedance: 8 Ohms • Voice Coil: 2.5" LF, 1.5" HF • Freq. Response: 70-20kHz. • Resonant Freq.: 70 Hz. • Frame: Cast Aluminum • Magnet: Ferrite

Horns



LTH102

Size: 1" elliptical tractrix • Coverage: 60°H x 50°V • Material: PC/ABS • Crossover: 1000 Hz. • 4-bolt pattern • 9.25"W x 7.44"H x 6.76"D



STH100

Size: 1" elliptical tractrix • Coverage: 80°H x 70°V • Material: Aluminum • Crossover: 1400 Hz. • 4-bolt pattern • 7.1"W x 4.7"H x 3.7"D



WG141

Size: 1.4" plane wave guide • Coverage: 110° • Material: Aluminum • Crossover: 800 Hz. • 4-bolt pattern • 5.1"W x 6.4"H x 7.9"D

HF Compression Drivers



HF2000

Size: 2" throat diameter • Power Rating: 100W AES • Sensitivity: 110db • Impedance: 8 Ohms • Voice Coil: 2.91", Titanium diaphragm • Freq. Response: 500-18kHz. • Crossover: 900 Hz. • Magnet: Neodymium ring

NEODYMIUM



HF146

Size: 1.4" throat diameter • Power Rating: 80W AES • Sensitivity: 109db • Impedance: 8 Ohms • Voice Coil: 2.56", Ketone polymer diaphragm • Freq. Response: 700-18kHz. • Crossover: 900 Hz. • Magnet: Neodymium slug crown

NEODYMIUM



HF108

Size: 1" throat diameter • Power Rating: 60W AES • Sensitivity: 109db • Impedance: 8 Ohms • Voice Coil: 1.73", Ketone polymer diaphragm • Freq. Response: 1k-20kHz. • Crossover: 1.3kHz. • Magnet: Neodymium

NEODYMIUM



HF10AK

Size: 1" throat diameter • Power Rating: 60W AES • Sensitivity: 110db • Impedance: 8 Ohms • Voice Coil: 1.73", Ketone polymer diaphragm • Freq. Response: 800-20kHz. • Crossover: 1.3kHz. • Magnet: Neodymium

NEODYMIUM



HF111

Size: 1" throat diameter • Power Rating: 40W AES • Sensitivity: 107db • Impedance: 8 Ohms • Voice Coil: 1.46", Ketone polymer diaphragm • Freq. Response: 2k-20kHz. • Crossover: 2kHz. • Magnet: Ferrite



HF100

Size: 1" throat diameter • Power Rating: 30W AES • Sensitivity: 108db • Impedance: 8 Ohms • Voice Coil: 1", Ketone polymer diaphragm • Freq. Response: 1.5k-20kHz. • Crossover: 2kHz. • Magnet: Ferrite



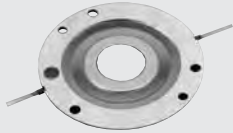
THE ITALIAN EDGE
FOR SOUND TECHNOLOGY

SOUND COMPETENCE
AT YOUR SERVICE

WWW.FAITALPRO.COM   

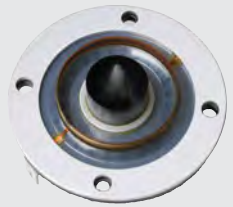
Prices and specs may change without notice. Not responsible for typographical errors.

Replacement Diaphragms



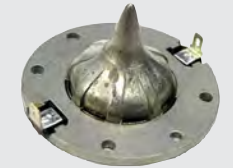
RD-2404

Titanium replacement, fits JBL 2404 & 2405 and others, 8 ohm, 1.75" voice coil.



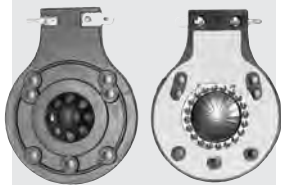
RD-2406

The Loudspeakers Plus RD2406 compares favorably to the JBL D8R2406 Replacement Annular / Ring Radiator Diaphragm Kit. This annular / ring radiator diaphragm kit fits the JBL 2406H compression driver to deliver smooth, extended high frequency output. Fits JBL M Pro 412, 415



RD-2408

Mylar replacement, fits JBL 2408H and others, 8 ohm, 1.75" voice coil. Fits most JBL MRX cabinets



RD-2412

These replacement diaphragms have the same style titanium domes, voice coils, and Kapton formers as original JBL diaphragms. This after market diaphragm is made to JBL 2412H-1 specifications and fits the 2412 Series of drivers: 2412, 2412H, 2412H-8, 2412-8, 2412-1, 2412H-1, 2412H-1-8, Sound Factor Series, SF-15, SR25, SR-25, JRX Series, JRX100, JRX112, JRX112M, JRX112MI, JRX115, JRX115I, JRX-100, JRX-112M, JRX-112MI, JRX-115, JRX-115I, TR Series, MPro Series, TR125, TR-225, MP-215, Eon Power15, Eon1500, Eon Power10, JBL M Pro 212, 215, 225 & 410 and many more! Titanium replacement, 8 ohms, 1" voice coil.



RD-2416

Titanium replacement, fits JBL 2416 and JBL Series "MR" cabinets, 2417, 8 ohm, 1.75" voice coil.



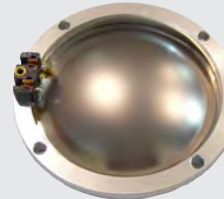
RD-2418

Titanium replacement, fits JBL 2418, X-Tealth and JBL Series "EON" cabinets, 8 ohm, 1.75" voice coil.



RD-2425

Titanium replacement, fits JBL 2425, JBL 2426, JBL 2427H (8 ohm), JBL 2427J (16 ohm), Altec 802, 804, 806, 807, 808, 902, 904, 908, 909 and others, 8 or 16 ohms, 1.75" voice coil.



RD-2431

Titanium replacement, fits JBL 2431H, 8 ohms, 3.0" voice coil.



RD-2446

Titanium replacement, fits CD-2445, JBL 2445, JBL 2446, 375, 2440, 2441, 2447, 2450, 2451, Peavey 441, 44XT and others, 8 or 16 ohms, 4" voice coil. Positive terminal is blue dot.



Replacement Diaphragms

Replacement Diaphragms



81161

Replacement diaphragm for the EV DH2A, DH2, DH2/AS1, DH2/AS2, DH2AMT and DH2T drivers.



81498

Replacement diaphragm for the EV DH3 Series driver.



81514

Replacement diaphragm for the EV DH2010A, DH200S, DH2010A and DH3 drivers. Also fits 89858xx.



F01U281501

EV 84233 Diaphragm for DH6, ND6-16. 16 ohm. 84233xx



F018281502

EV 84234 Diaphragm for DH5-8WPX, DH6-8, DH7-8, N-DYM-1, N/DYM5-8, N/DYM 5-8/2, ND6-8. Also replaces EV DH1, DH1A, DH1AM7, DH1A-WP, DH1A-WPX, DH1012, N-DYM1 and N-DYM-1MT drivers. 84234xx and 81256xx.



89222A

Replacement diaphragm for 100S, CD3S, CM12-2, CM-12, FM12, PI100, Sentry 100A, 100EL, 500, 505, Musicaster, FR12-2, FR12-2B, INT1-2, INT2-2, INT3-2, INTA-3, INTA-4, INTB-3, INTB-4, INTC-2, INTC-4, MS802, etc.

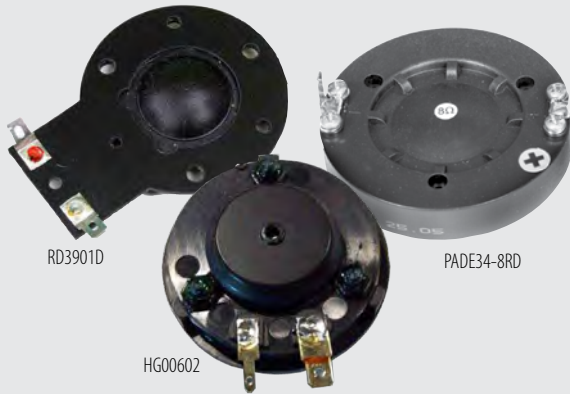


DH1K

Replacement Diaphragm used in DH1K, DH1-K, ELX112, ELX115, ELX215, ELX-112, ELX-115, ELX-215, ELX112P, ELX115P, ELX-112P, ELX-115P, ASY001060000, S-F01U247593, Live X, Live-X, LiveX



Speakers, High Frequency Drivers & Replacement Diaphragms



If you need Alto repair parts, we carry the replacement speakers, high-frequency drivers, recone kits and replacement diaphragms you need.

Call us today for more information about the Alto repair



High Frequency Drivers & Replacement Diaphragms



We offer the complete line of Atlas products, including high-frequency drivers and replacement diaphragms.

Call us today for more information about the Atlas products that you need.



Speakers, High Frequency Drivers & Replacement Diaphragms

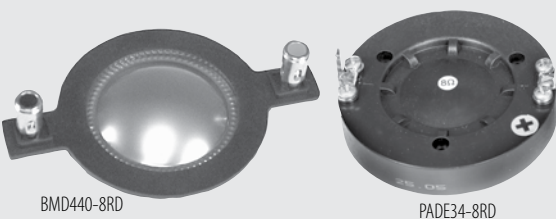


Get the Behringer repair products, including speakers, high-frequency drivers, recone kits and replacement diaphragms.

Call us today for more information about Behringer parts.



Speakers, High Frequency Drivers & Replacement Diaphragms



Get the Behringer repair products, including speakers, high-frequency drivers, recone kits and replacement diaphragms.

Call us today for more information about Behringer parts.

Prices and specs may change without notice. Not responsible for typographical errors.

EAW**Speakers**

Need EAW speaker parts? We have what you need.

Call us today for more information about the EAW products that you need.

NEUTRIK**Connectors**

We offer the complete line of Neutrik connector products, including Neutrik, 1/4" and 3-pin XLR plugs and jacks.

Call us today for more information about the Neutrik

**Speakers, High Frequency Drivers & Replacement Diaphragms**

We offer the complete line of Peavey products, including pro audio speakers, high frequency drivers and replacement baskets & diaphragms.

Call us today for more information about the Peavey products that you need.

**Speakers, High Frequency Drivers & Replacement Diaphragms**

When you need repair parts for your QSC products, give us a call.

We have replacement information for most QSC speaker cabinets and can help you get the parts you need.

Prices and specs may change without notice. Not responsible for typographical errors.

RCF**Speakers, High Frequency Drivers & Replacement Diaphragms**

M-73



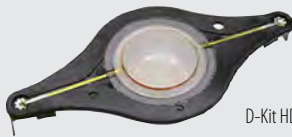
M-81

Looking for RCF repair parts? We carry the replacement speakers, high-frequency drivers, and replacement diaphragms you need.

Call us today for more information about the RCF repair products that you need.

**Speakers, High Frequency Drivers & Replacement Diaphragms**

T5503



D-Kit HD120

Need some Yorkville replacement parts? We carry the replacement speakers, high-frequency drivers, and replacement diaphragms you need.

Call us today for more information about the Yorkville

Speaker Reconing Service

Our factory trained technicians can recone your speakers and bring them back to original factory specs... good as new!!!!

Our recones also come with a 1-year warranty from defects and workmanship.**

To Get Your Speakers Reconed, use the following steps.

1. Email (sales@loudspeakersplus.com) or call (847-963-0725) us for quote on parts and shipping instructions
2. Remove your speakers from the cabinet
3. Package your speaker by placing a cardboard cover over the cone side of speaker, double wrap with bubble pack (NO FOAM PEANUTS) and put in heavy duty cardboard box for shipping. This is the most important step, if your speaker arrives damaged we cannot recone your speaker
4. Include a copy of the LoudspeakersPlus Recone Form (see below) with your full name, address, phone and email. Give us a brief description of the speaker and problem
5. Call us for your order number
6. Ship your speaker, pre-paid and insured to us

That's it!

Your speaker will be returned within 2 weeks from the time it arrives at our door, as good as new. Reconing your speakers can save you hundreds of dollars, and with our warranty, you are completely covered if there is ever a problem.

Call Today For Your Recone Quote!

**Factory authorized warranty/parts for Beyma, B&C, Eminence, EV, Fane, Jensen, P Audio, Peavey, Selenium, Yamaha & 18 Sound. We also handle just about every other brand including Altec, JBL, Cerwin Vega, RCF, etc.*

*** Our limited warranty covers parts and workmanship. Abuse, overpowering or improper usage of speakers is never covered by warranty.*

Prices and specs may change without notice. Not responsible for typographical errors.

LoudspeakersPlus

847.963.0725

www.loudspeakersplus.com

Sound thinking in coaxial design

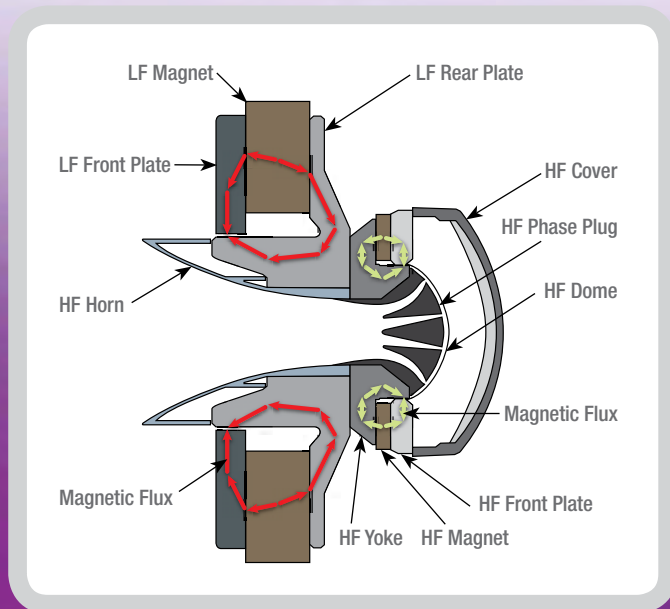
How a common magnet motor delivers a better sounding, lightweight, full-range speaker

Coaxial drivers have long been chosen as an alternative to two-way speaker systems, delivering benefits in size, weight and off-axis response. By concentrically aligning the low and high frequency components, coaxial loudspeakers act as a single source.

Moving the concept forward, Celestion's FTX coaxial range features fully combined LF and HF components that are powered by a Common Magnet Motor Assembly - i.e. using the same magnet for both elements. This enables the voice coils and hence the acoustic centres of the two drivers to be brought much closer together. The end result is a significant improvement in signal coherence and time alignment, and the most natural sounding audio reproduction.

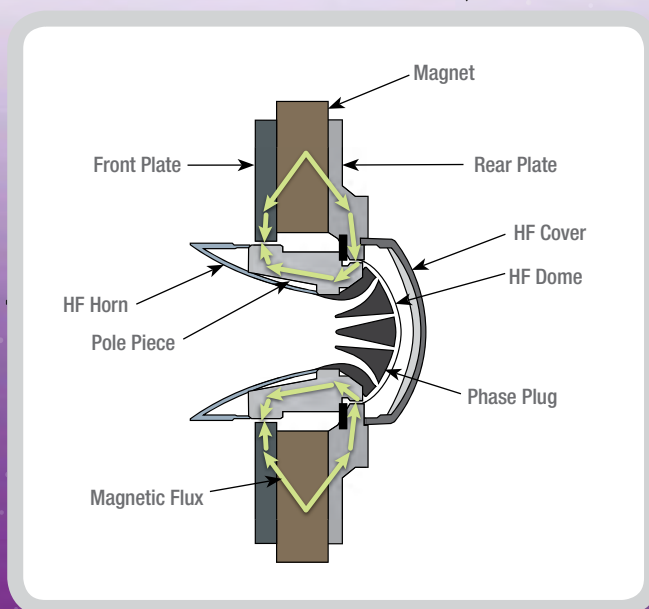
The magnetic flux is optimally distributed between the two elements (calculated using FEA), to achieve the best balance between HF and LF response (see diagrams below). Additionally, the use of a single magnet assembly also means lighter weight and a more compact profile, compared to more conventional dual motor designs.

Make the innovative choice - Celestion Pro Audio Drivers. See the full range inside.



Traditional Coaxial Driver

With a magnet for each driver, the traditional coaxial design is heavier and the voice coils are further apart.



Celestion Common Magnet Motor Design

Celestion's single magnet design is a more compact, lighter-weight alternative with significant improvements in signal coherence and time alignment.

Find out more



celestion.com

CELESTION