

RED HAT
SUMMIT

BOSTON, MA
JUNE 23-26, 2015

Process-driven application development using Red Hat JBoss BPM Suite

Kris Verlaenen

~~jBPM Project Lead~~
June 24, 2015

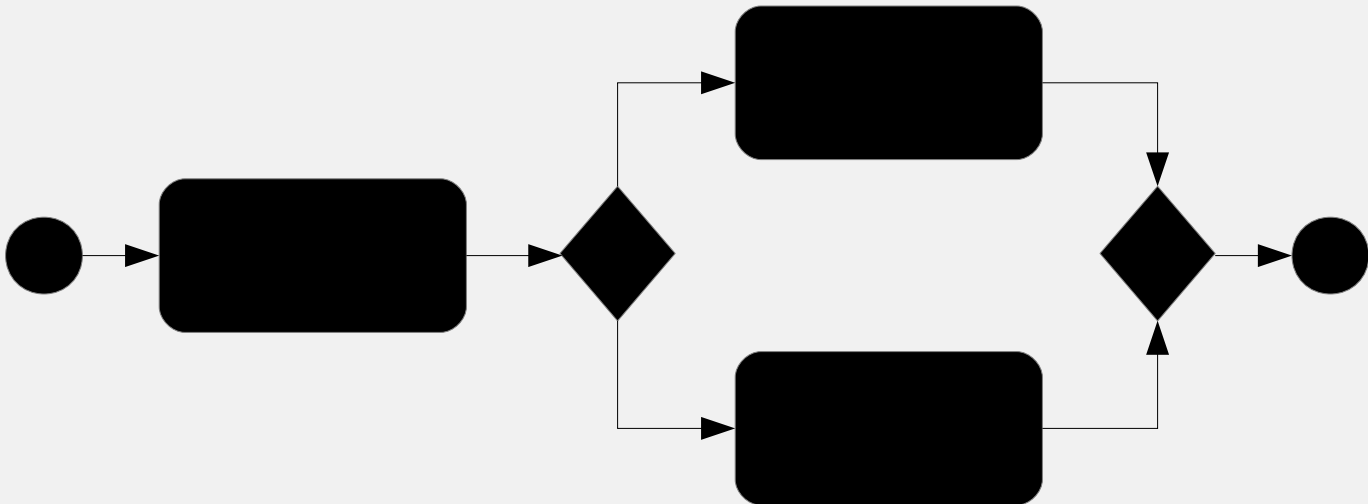
Alex Porcelli
Principal Software Engineer

Overview

- Quick intro to jBPM / Red Hat JBoss BPM Suite
- Process-driven applications
- Roadmap

Quick intro to jBPM / Red Hat JBoss BPM Suite

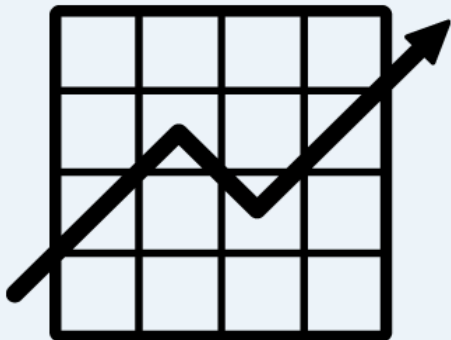
Business Process



Authoring

Why?

- ✓ Visibility
- ✓ Monitoring
- ✓ Higher-level
- ✓ Continuous improvement
- ✓ Agility



Monitoring

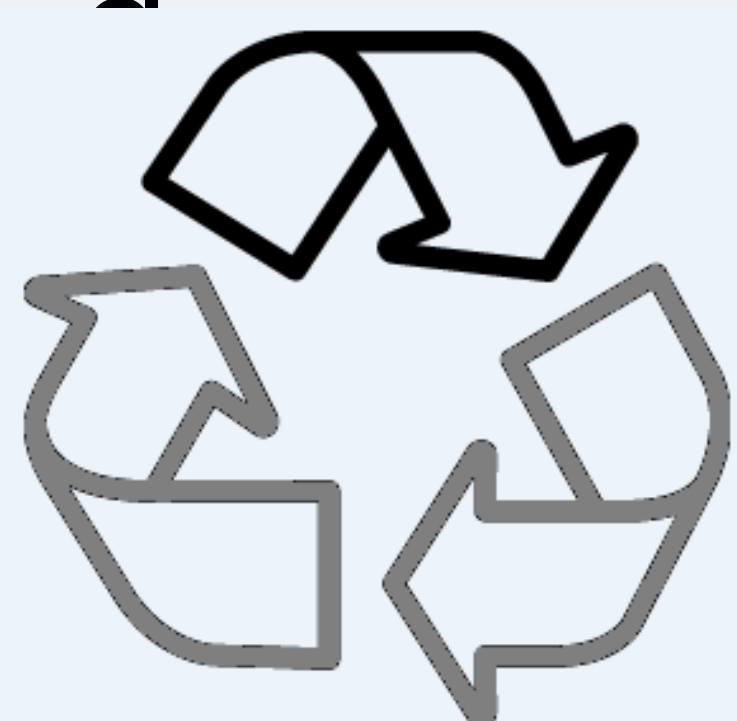


Execution

Business Process Life Cycle

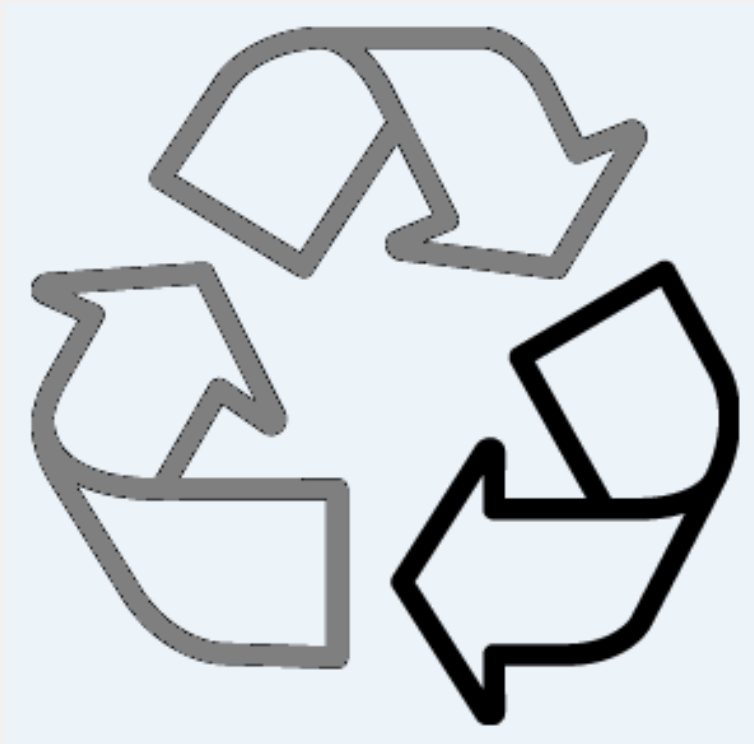


Authorin



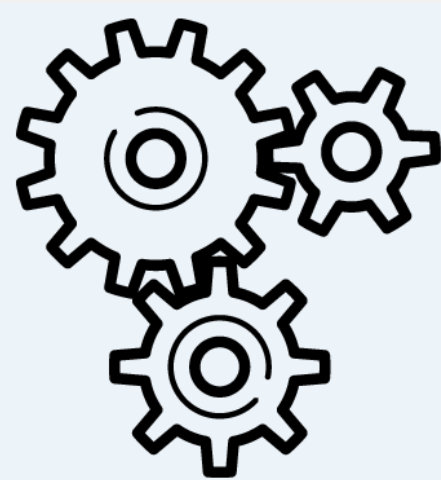
- Business logic
 - Business processes (BPMN 2.0)
 - Data models (Java)
 - Forms
 - Rules, configuration, etc.
- Web-based
 - Versioned repositories
 - Editors
- Eclipse IDE
- Deploying

Business Process Life Cycle



Executio

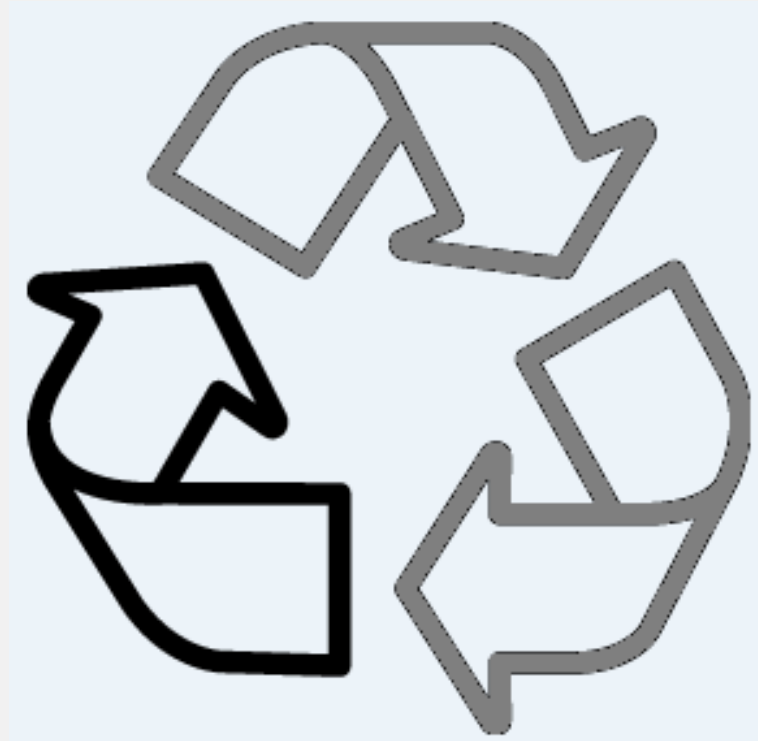
n



- Lightweight core engine
 - Embeddable
 - Execution service
- Task service
- Local and remote APIs

- Web-based UI
 - Process management
 - Task list

Business Process Life Cycle



Monitoring



- Audit information
- Dashbuilder
 - Out-of-the-box (technical) reports
 - User-defined reports

Process-Driven Applications

Process-Driven Applications

- jBPM offers generic tooling
 - Defining, managing and monitoring processes
- Can be integrated into custom applications
 - Embedded vs as a service
- Workbench = Out-of-the-box web-based UI

Demo

Process-Driven Applications

- jBPM offers generic tooling
 - Defining, managing and monitoring processes
- Can be integrated into custom applications
 - Embedded vs as a service
- Workbench = Out-of-the-box web-based UI

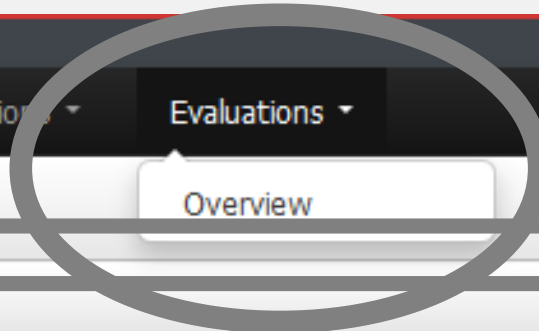
BUT => Each use case is different !

Process-Driven Applications

- Domain-specific application
 - For one (set of) processes
 - Custom visualization of important data
 - Based on data already available (remote API)
 - Can be fully customized

Customizable Workbench

- Develop new **screens**
- Combine screens in a **perspective**
- Register perspectives in **dynamic menu**



Evaluation instances

Id	Start	Owner	Details
37	Jun 22, 2015 3:01:13 PM	krisv	Details
38	Jun 22, 2015 3:05:25 PM	krisv	Details

Reload

EvaluationInstances

Correlation key

Form

*Employee

*Reason

Start Process

EvaluationForm

EvaluationPerspective

Customizable Workbench: Demo

- Develop new **screens**
 - **EvaluationInstances**: table of active 'Evaluation' instances
 - *AngularJS* table using remote API:
/jbpm-console/rest/history/process/evaluation?status=1
 - **EvaluationForm**: embeddable form to start new Evaluation
 - JS calling embeddable process form

Demo

Customizable Workbench: Dashbuilder

Edit Displayer ✕

Type Data **Display**

Margins

Meter

Start

Warning level

Critical level

End

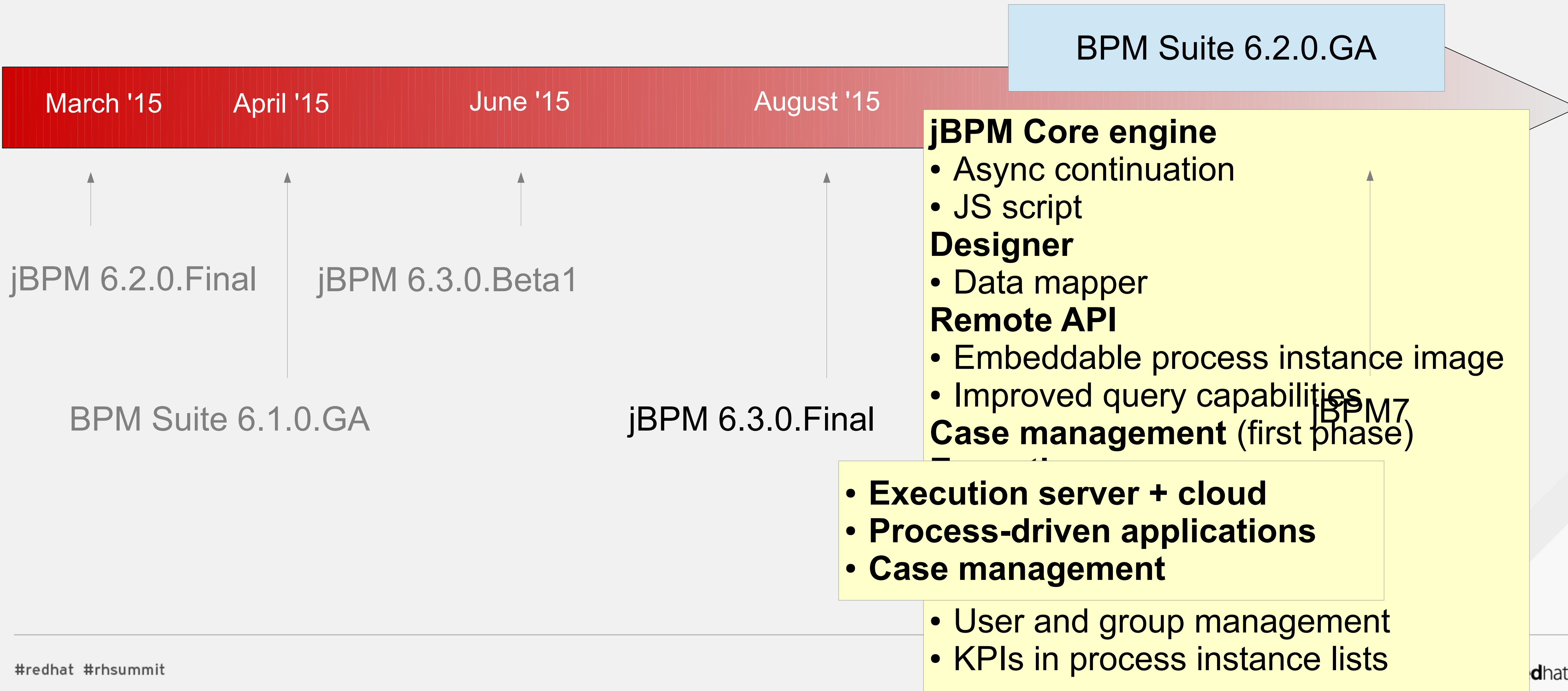
Filter

Active 'Evaluation' instances

Ok Cancel

Roadmap

Roadmap



BPM Suite 6.2.0.GA

March '15

April '15

June '15

August '15

jBPM 6.2.0.Final

jBPM 6.3.0.Beta1

BPM Suite 6.1.0.GA

jBPM 6.3.0.Final

jBPM Core engine

- Async continuation
- JS script

Designer

- Data mapper

Remote API

- Embeddable process instance image
- Improved query capabilities

Case management (first phase)

- Execution server + cloud
- Process-driven applications
- Case management

- User and group management
- KPIs in process instance lists

jBPM Project / Red Hat JBoss BPM Suite

- More information
 - jbpm.org
 - Latest release:
 - 6.2.0.Final
 - 6.3.0.Beta1
 - Get started yourself
 - jBPM installer
 - **Docker**
- More information
 - redhat.com/en/technologies/jboss-middleware/bpm
 - Latest release:
 - 6.1.0.GA
 - Get started yourself
 - BPM Suite installer
 - Download evaluation version for developers

Questions?



RED HAT
SUMMIT

SUMMIT BY DAY

PARTY BY NIGHT

JOIN OUR **JBOSS,**
OPENSIFT,
AND **MOBILE** TEAMS
FOR A NIGHT OF GAMES, DANCING,
AND OPEN CONTAINERS

Visit the Red Hat booth
in Hall D for location
and invitation.

An invitation doesn't guarantee entrance. Admission determined by city of Boston fire code.

RED HAT
SUMMIT

LEARN. NETWORK.
EXPERIENCE OPEN SOURCE.