

WDG-INSITU FLUE GAS OXYGEN ANALYZER

Direct-sensing insitu probe suitable for applications where the flue gas temperature does not exceed 1250°F (677°C) and where combustibles measurement is not required. Completely field serviceable.

SENSOR

Principle of Operation: Zirconium oxide for net oxygen measurement.

Output Range: Oxygen: From 0-1% to 0-100%

Accuracy: ±1% of measured value or ±0.05% oxygen, whichever is greater

Response: 63% of a step change < 20 seconds.

Drift: < 0.1% of cell output per month (< 0.005% O₂ per month with 2% O₂ applied)

Linearity: ±1% of output span

Repeatability: ±1% of output span

Max. Flue Gas Temperature: 1250°F (677°C). Probe material highly corrosion resistant.

Sample Pressure: ± 10 in. water gauge

Environment:

Ambient Temp.: -5 to 160°F (-20 to 71°C)
Relative Humidity: 10% to 90%, non-condensing

Enclosure: UL type (NEMA 4X) standard. Optional explosion-proof and purged versions available. (Purged version for subatmospheric process pressure only.)

Power Requirements: 115 VAC, ± 10%, 47-63 Hz; 230 VAC, ± 10%, 47-63 Hz; 150 VA max.

Calibration Gas Requirements: Use all calibration gases @ 10 psig, 3 to 6 scfh (0.70 kg/cm², 1.41 to 2.82 L/min.)

O₂ Span Gas: Air or from 1.0% to 100% O₂, balance N₂

O₂ Zero Gas: 2% or from 0.1 to 10% O₂, balance N₂



WDG-INSITU Probe



Series 2000 Control Unit

SERIES 2000 CONTROL UNIT

Display: Four-line x 20-character vacuum fluorescent. Displays combinations of oxygen, time and date, cell temperature, user-programmable text, thermocouple mV or cell mV. Password protection, programmable pressure compensation and context sensitive help are also provided.

Analog Output: Two isolated linear current outputs. Select O₂, cell temperature, thermocouple mV or cell mV. Each output can be 4-20 mA, 0-20 mA, 20-4 mA or 20-0 mA and is fully scalable. Hold or track during calibration and select degree of damping. Maximum load 1200 ohms.

Alarms: Two independent oxygen alarms, each high- or low-selectable. One alarm can be assigned as oxygen, calibrate or verify. Set relays to energize or de-energize on alarm.

Contact Rating: 1A, 30V max. non-inductive load, AC or DC

Diagnostics: Watchdog timer and service alarms. System test for A/D, RAM, EEPROM and keypad. Display line 4 reserved for full-text error and diagnostic messages. Twenty-entry event log.

Communications: RS-485 2-way addressable.

Environment:

Ambient Temp.: 14 to 122°F (-10 to 50°C)
Relative Humidity: 10% to 80%, non-condensing

Enclosure: Standard weatherproof NEMA 4 (IP 56) wall/panel mount. Optional GP (General Purpose) wall mount, GP 19" rack mount, GP panel mount, or stainless steel weatherproof NEMA 4X (IP 56) wall/panel mount. All are UL Listed for NEC Class I, Division 2 areas. Purged and explosion-proof versions also available.

Calibration: Oxygen cell lifetime extender. Calibrate or verify calibration. Store last calibration and verification data. Selectable calibration gas run time and process recovery time. Timed automatic calibration with optional Remote Calibration Unit.

Power Requirements: Nominal 115-230 VAC ±10%, 47-63 Hz; 75 VA max.

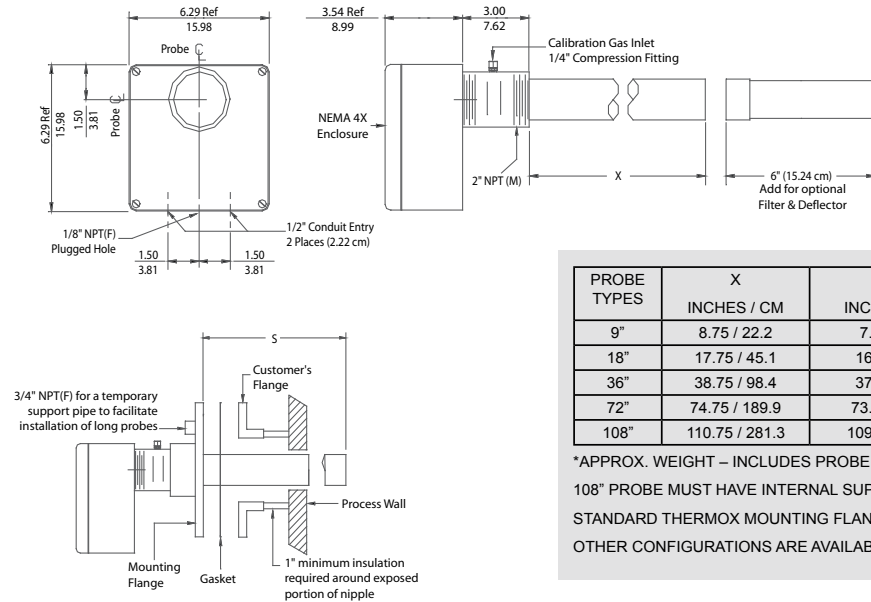
System Compliance:

EMC Directive 2004/108/EC
Low Voltage Directive 73/23/EEC

WDG-INSITU ANALYZER

SENSOR

INCHES
CM

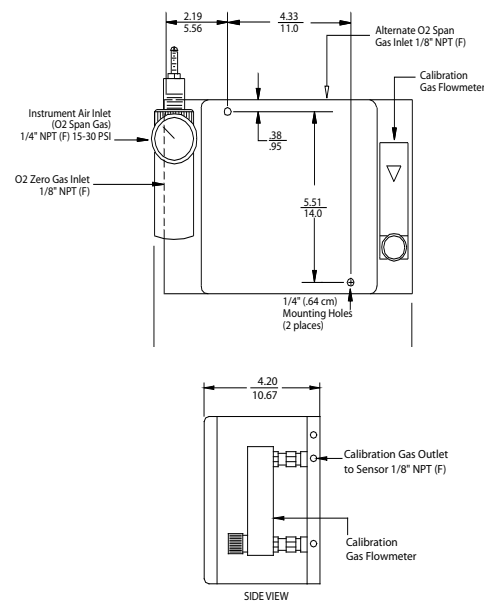


PROBE TYPES	X INCHES / CM	S INCHES / CM	WEIGHT* LB / KG
9"	8.75 / 22.2	7.0 / 17.8	15 / 6.8
18"	17.75 / 45.1	16.0 / 40.6	20 / 9.1
36"	38.75 / 98.4	37.0 / 94.0	25 / 11.3
72"	74.75 / 189.9	73.0 / 185.4	40 / 18.1
108"	110.75 / 281.3	109.0 / 276.8	50 / 22.7

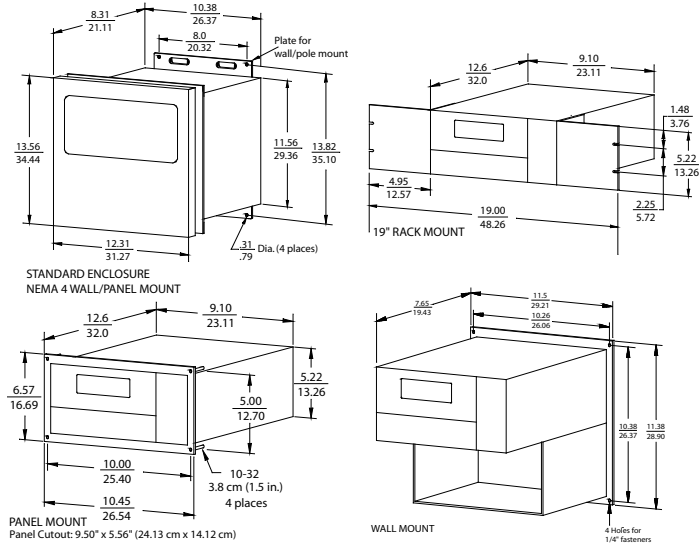
*APPROX. WEIGHT – INCLUDES PROBE + FLANGE.
108" PROBE MUST HAVE INTERNAL SUPPORT PROVIDED BY CUSTOMER.
STANDARD THERMOX MOUNTING FLANGES: 3" – 300# AND 4" – 150#.
OTHER CONFIGURATIONS ARE AVAILABLE UPON REQUEST.

REMOTE CALIBRATION UNIT

ENCLOSURE NEMA 4X, APPROX. WEIGHT: 8 LB (3.6 KG)



CONTROL UNIT



APPROX. WEIGHTS

NEMA 4 WALL/PANEL MOUNT: 28 LB (12.7 KG)

19" RACK MOUNT: 14 LB (6.35 KG)

PANEL MOUNT: 14 LB (6.35 KG)

WALL MOUNT: 14 LB (6.35 KG)

NOTES:

1. All static performance characteristics are with operating variables constant.
2. System accuracy referenced to 0.1 to 10% calibrated range.
3. Response is to calibration gas.

AMETEK
PROCESS INSTRUMENTS
150 Freepoint Road, Pittsburgh, PA 15238
Ph. +1-412-828-9040, Fax +1-412-826-0399
www.thermox.com



© 2006, by AMETEK, Inc.
All rights reserved. Printed in the U.S.A.
P300 (8/07)

One of a family of innovative process analyzer solutions from AMETEK Process Instruments.
Specifications subject to change without notice.

SALES AND MANUFACTURING:

USA - Delaware
455 Corporate Blvd., Newark DE 19702 • Tel: +1-302-456-4400, Fax: +1-302-456-4444

USA - Oklahoma
2001 N. Indianwood Ave., Broken Arrow OK 74012 • Tel: +1-918-250-7200, Fax: +1-918-459-0165

CANADA - Alberta
2876 Sunridge Way N.E., Calgary, AB T1Y 7H9 • Tel: +1-403-235-8400, Fax: +1-403-248-3550

WORLDWIDE SALES AND SERVICE LOCATIONS:

USA - Texas
Tel: +1-281-463-2820, Fax: +1-281-463-2701

CHINA
Beijing / Tel: 86 10 8526 2111, Fax: 86 10 8526 2141
Chengdu / Tel: 86 28 8675 8111, Fax: 86 28-8675 8141
Shanghai / Tel: 86 21 6426 8111, Fax: 86 21 6426 7818

FRANCE
Tel: 33 1 30 68 89 00, Fax: 33 1 30 68 89 99

GERMANY
Tel: 49 21 59 91 36 0, Fax: 49 21 59 91 36 80

MIDDLE EAST - Dubai
Tel: 971 4 881 2052, Fax: 971 4 881 2053

SINGAPORE
Tel: 65 6484 2388, Fax: 65 6481 6588

THERMOX®

WDG INSITU-CENELEC

FLUE GAS OXYGEN ANALYZER FOR ATEX II 2 G HAZARDOUS AREA

Direct-sensing insitu probe suitable for applications where the flue gas temperature does not exceed 1250°F (677°C) and where combustibles measurement is not required. Completely field serviceable.



SENSOR

Principle of Operation: Direct-sensing insitu probe using zirconium oxide for net oxygen measurement.

Enclosure: Approved for CE 0081, Ex II 2 G, EEx d II C T3 (IP 65)

Output Range: From 0-1% to 0-100% O₂

Accuracy: ±1% of measured value or ±0.05% oxygen absolute, whichever is greater

Response: 63% of a step change in < 48 sec. at 55 km/hr. (34 mph) duct velocity

Drift: < 0.1% of cell output per month (< 0.005% O₂ per month with 2% O₂ applied)

Max. Flue Gas Temp.: 677°C (1250°F)

Ambient Temp.: -20°C to 70°C (-50°F to 160°F)

Power Requirement: 230 VAC ±10%, 47 - 63 Hz. (115 VAC optional); 150 VA max.

Calibration Gas: Use all calibration gases @ 0.7 kg/cm², 1.5 to 3 L/min.

O₂ Span Gas: Air or from 1.0 to 100% O₂, balance N₂

O₂ Zero Gas: 2% or from 0.1% to 10% O₂, balance N₂

SERIES 2000 CONTROL UNIT

Display: Four-line x 20-character vacuum fluorescent. Displays combinations of oxygen, time and date, cell temperature, user programmable text, thermocouple mV or cell mV. Password protection, programmable pressure compensation and context-sensitive help are also provided.

Analog Output: Two isolated linear current outputs. Select oxygen, cell temperature, thermocouple mV or cell mV. Each output can be 4-20 mA, 0-20 mA, 20-4 mA or 20-0 mA and is fully scalable. Hold or track during calibration and select degree of damping. Maximum load 1200 ohms.

Alarms: Two independent oxygen alarms, each high or low selectable. One alarm can be allocated to oxygen, calibrate or verify. Set relays to energize or de-energize on alarm.

Contact Rating: 1A, 30V max. noninductive load, AC or DC

Diagnostics: Watchdog timer and service alarms. System test for A/D, RAM, EEPROM and keypad. Display line 4 reserved for full text error and diagnostic messages. Twenty entry event log.

Communications: RS-485 2-way addressable

Environment:

Ambient Temp.: -14°F to 122°F (-10°C to 50°C)

Relative Humidity: 0% to 80%, non-condensing

Enclosure: Approved for CE 0081, Ex II 2 G, EEx d II C T6 (IP65). For non-hazardous area, optional weatherproof NEMA 4 (IP 56) wall/panel mount, GP (General Purpose) wall mount, GP 19" rack mount, GP panel mount, or stainless steel weatherproof NEMA 4X (IP 56) wall/panel mount. All are UL Listed for NEC Class I, Division 2 areas.

Calibration: Oxygen cell lifetime extender. Calibrate or verify calibration. Store last calibration and verification data. Selectable calibration gas run time and process recovery time. Timed automatic calibration with optional Remote Calibration Unit.

Power Requirements: Nominal 115-230 VAC ±10%, 47-63 Hz; 75 VA max.

SYSTEM COMPLIANCE:

ATEX Directive 94/9/EC

LCIE03 ATEX 6276X (Sensor)

LCIE01 ATEX 6028 (Controller)

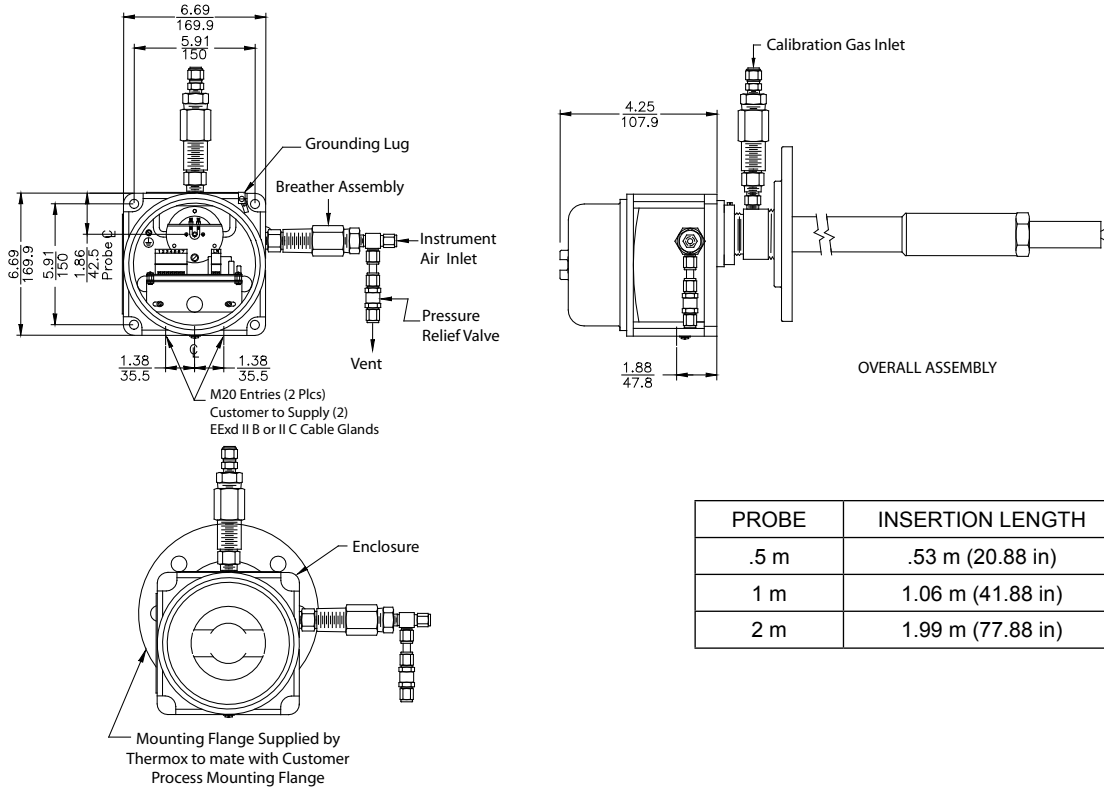
EN50014 and EN50018

EMC Directive 2004/108/EC

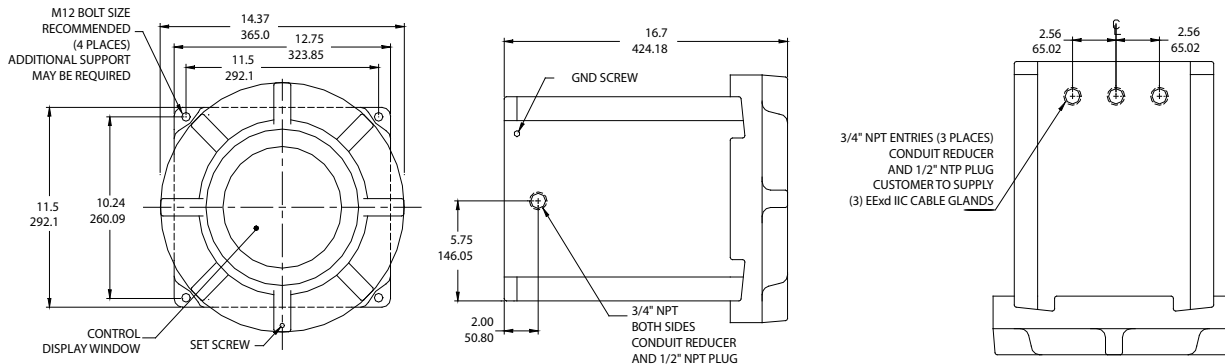
Low Voltage Directive 2006/95/EC

WDG INSITU-CENELEC ANALYZER

SENSOR



CONTROL UNIT



NOTES:

1. All static performance characteristics are with operating variables constant.
2. System accuracy referenced to 0.1 to 10% calibrated range.
3. Response is to calibration gas except where stated.



150 Freeport Road, Pittsburgh, PA 15238
 Ph. +1-412-828-9040, Fax +1-412-826-0399
 www.thermox.com



© 2006, by AMETEK, Inc.
 All rights reserved. Printed in the U.S.A.
 P30C (05/08)

One of a family of innovative process analyzer solutions from AMETEK Process Instruments.
 Specifications subject to change without notice.

SALES AND MANUFACTURING:

USA - Delaware
 455 Corporate Blvd., Newark DE 19702 • Tel: +1-302-456-4400, Fax: +1-302-456-4444

USA - Oklahoma
 2001 N. Indianwood Ave., Broken Arrow OK 74012 • Tel: +1-918-250-7200, Fax: +1-918-459-0165

CANADA - Alberta
 2876 Sunridge Way N.E., Calgary, AB T1Y 7H9 • Tel: +1-403-235-8400, Fax: +1-403-248-3550

WORLDWIDE SALES AND SERVICE LOCATIONS:

USA - Texas
 Tel: +1-713-466-4900, Fax: +1-713-849-1924

CHINA
 Beijing / Tel: 86 10 8526 2111, Fax: 86 10 8526 2141
 Chengdu / Tel: 86 28 8675 8111, Fax: 86 28-8675 8141
 Shanghai / Tel: 86 21 6426 8111, Fax: 86 21 6426 7818

FRANCE
 Tel: 33 1 30 68 89 00, Fax: 33 1 30 68 89 99

GERMANY
 Tel: 49 21 59 91 36 0, Fax: 49 21 59 91 36 80

MIDDLE EAST - Dubai
 Tel: 971 4 881 2052, Fax: 971 4 881 2053

SINGAPORE
 Tel: 65 6484 2388, Fax: 65 6481 6588

THE[®] THERMOX

WDG-HPIIC FLUE GAS OXYGEN & COMBUSTIBLES ANALYZER

Close-coupled convective design for high particulate applications. Suitable for flue gas temperature up to 2800°F (1537°C). Completely field serviceable.



SENSOR

Principle of Operation: Zirconium oxide for net oxygen measurement.

Output Range:

Oxygen: From 0-1% to 0-100%
 Combustibles: From 0-2,000 ppm to 0-10,000 ppm or from 0-1% to 0-5%

Accuracy:

Oxygen: ±0.75% of measured value or ±0.05% oxygen, whichever is greater
 Combustibles: ±2% of full scale output range

Response:

Oxygen: 90% of a step change <30 seconds with 24" probe

Drift: < 0.1% of cell output per month; < 0.005% O₂ per month with 2% O₂ applied

Max. Flue Gas Temp. / Probe Type:

1300°F (704°C) / 316 SS
 1875°F (1024°C) / 310 SS
 2800°F (1537°C) / Ceramic

Probe Lengths: 24", 36" & 48" (0.60m, 0.91m & 1.21m)

Max. Sample Dewpoint: 392°F (200°C)

Sample Pressure:

± 10 in. water gauge

Environment:

Ambient Temp.: -5°F to 160°F (-20°C to 71°C); -5°F to 140°F (-20°C to 60°C) with Div. 2 Option

Relative Humidity: 10% to 90%, non-condensing

Enclosure: Lift-off NEMA 3R, weather resistant, stainless steel. Optional hinged NEMA 4X (IP56), explosion-proof, purged, and floor mount versions available.

Power Requirements: 115 VAC, ±10%, 47-63 Hz, 600 VA max. (650 VA max. w/floor mount option); 230 VAC, ±10%, 47-63 Hz, 1850 VA max. (1900 VA max. w/floor mount option)

Calibration Gas Requirements: Use calibration gases @ 10 psig, 1.5 scfh (0.70 kg/cm², 0.7 L/min.)

O₂ Span Gas: Air or from 1.0% to 100% O₂, balance N₂

O₂ Zero Gas: 2% or from 0.1% to 10% O₂, balance N₂

Comb. Span Gas: 60 to 80% (ppm ranges) or 40 to 60% (% ranges) of the selected comb. recorder output range in certified mixture of CO + H₂, 3-4% O₂, balance N₂

SERIES 2000 CONTROL UNIT

Display: Four-line x 20-character vacuum fluorescent. Displays combinations of oxygen, % or ppm combustibles, time and date, cell temperature, user-programmable text, thermocouple mV or cell mV. Password protection, programmable pressure compensation and context-sensitive help are also provided.

Analog Output: Two isolated linear current outputs for oxygen and one for combustibles. Select O₂, combustibles, cell temperature, thermocouple mV or cell mV. Each output can be 4-20 mA, 0-20 mA, 20-4 mA or 20-0 mA and is fully scalable. Hold or track during calibration and select degree of damping. Maximum load 1200 ohms.

Contact Rating: 1 A, 30V max. non-inductive load, AC or DC

Diagnostics: Watchdog timer and service alarms. System test for A/D, RAM, EEPROM, and keypad. Display line 4 reserved for full text error and diagnostic messages. Twenty-entry event log.

Communications: RS-485, 2-way addressable

Environment:

Ambient Temp.: 14°F to 122°F (-10°C to 50°C)

Relative Humidity: 10% to 80%, non-condensing

Enclosure: Standard weatherproof NEMA 4 (IP 56) wall/panel mount. Optional GP (General Purpose) wall mount, GP 19" rack mount, GP panel mount, or stainless steel weatherproof NEMA 4X (IP 56) wall/panel mount. All are UL Listed for NEC Class I, Division 2 areas. Purged and explosion-proof versions also available.

Calibration: Oxygen cell lifetime extender. Calibrate or verify calibration. Store last calibration and verification data. Selectable calibration gas run time and process recovery time. Timed automatic calibration with optional Remote Calibration Unit.

Power Requirements: Nominal 115-230 VAC ±10%, 47-63 Hz, 75 VA max.

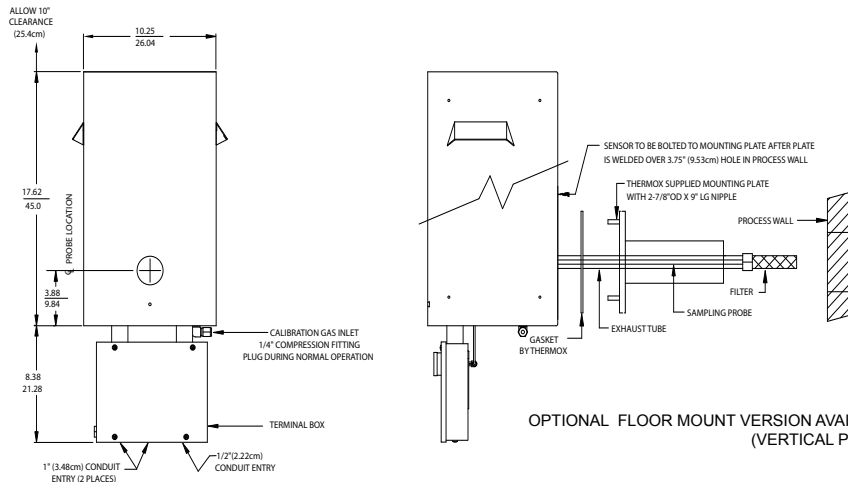
System Compliance:

EMC Directive: 2004/108/EC
 Low Voltage Directive: 73/23/EEC

WDG-HPIIC ANALYZER

STANDARD LIFT-OFF SENSOR ENCLOSURE

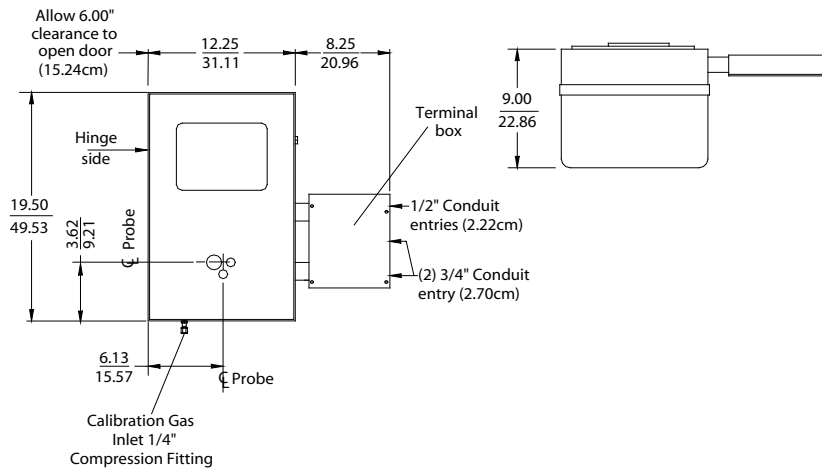
APPROX. WEIGHT: 37.6 LB (17KG)



OPTIONAL FLOOR MOUNT VERSION AVAILABLE (VERTICAL PROBE)

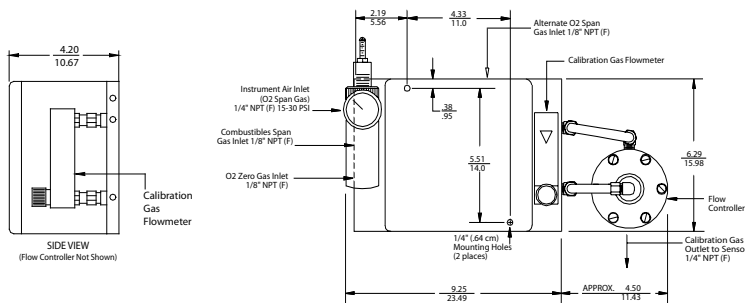
OPTIONAL: HINGED SENSOR ENCLOSURE

APPROX. WEIGHT: 53 LB (24 KG)



REMOTE CALIBRATION UNIT

RCU ENCLOSURE NEMA 4X - APPROX. WEIGHT: 8.0 LB (3.6 KG)



- NOTES:
1. All static performance characteristics are with operating variables constant.
 2. System accuracy referenced to 0.1 to 10% calibrated range.
 3. Response is to calibration gas.

AMETEK
PROCESS INSTRUMENTS

150 Freeport Road, Pittsburgh, PA 15238
Ph. +1-412-828-9040, Fax +1-412-826-0399
www.thermox.com

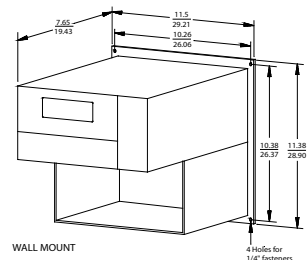
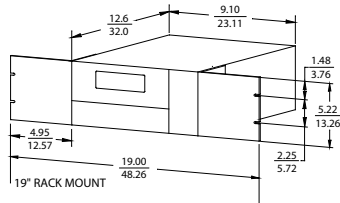
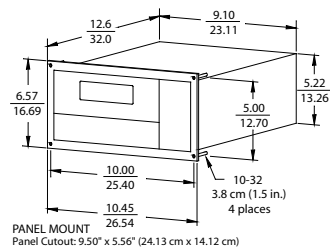
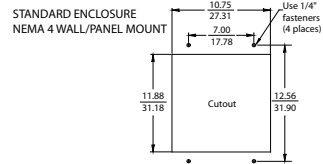
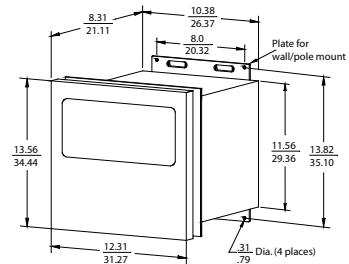


© 2006, by AMETEK, Inc.
All rights reserved. Printed in the U.S.A.
P270 (8/07)

One of a family of innovative process analyzer solutions from AMETEK Process Instruments.
Specifications subject to change without notice.

INCHES
CM

CONTROL UNIT



APPROX. WEIGHTS
NEMA 4 WALL/PANEL MOUNT: 28 LB (12.7 KG)
19\"/>

SALES AND MANUFACTURING:

USA - Delaware
455 Corporate Blvd., Newark DE 19702 • Tel: +1-302-456-4400, Fax: +1-302-456-4444

USA - Oklahoma
2001 N. Indianwood Ave., Broken Arrow OK 74012 • Tel: +1-918-250-7200, Fax: +1-918-459-0165

CANADA - Alberta
2876 Sunridge Way N.E., Calgary, AB T1Y 7H9 • Tel: +1-403-235-8400, Fax: +1-403-248-3550

WORLDWIDE SALES AND SERVICE LOCATIONS:

USA - Texas
Tel: +1-281-463-2820, Fax: +1-281-463-2701

CHINA
Beijing / Tel: 86 10 8526 2111, Fax: 86 10 8526 2141
Chengdu / Tel: 86 28 8675 8111, Fax: 86 28-8675 8141
Shanghai / Tel: 86 21 6426 8111, Fax: 86 21 6426 7818

FRANCE
Tel: 33 1 30 68 89 00, Fax: 33 1 30 68 89 99

GERMANY
Tel: 49 21 59 91 36 0, Fax: 49 21 59 91 36 80

MIDDLE EAST - Dubai
Tel: 971 4 881 2052, Fax: 971 4 881 2053

SINGAPORE
Tel: 65 6484 2388, Fax: 65 6481 6588

THE THERMOX[®]

THE RIGHT ANALYZER FOR *YOUR* APPLICATION!

WDG-IVC FLUE GAS OXYGEN & COMBUSTIBLES ANALYZER

CLOSE-COUPLED EXTRACTIVE DESIGN FOR FAST RESPONSE IN A WIDE RANGE OF FLUE GAS APPLICATIONS UP TO 3000°F (1648°C). COMPLETELY FIELD SERVICEABLE.

SENSOR



Principle of Operation: Zirconium oxide for net oxygen measurement and a catalytic detector for combustibles.

Output Range:

Oxygen: From 0-1% to 0-100%
 Combustibles: From 0-2,000 ppm to 0-10,000 ppm or from 0-1% to 0-5%

Accuracy:

Oxygen: $\pm 0.75\%$ of measured value or $\pm 0.05\%$ oxygen, whichever is greater
 Combustibles: $\pm 2\%$ of full scale output range

Response:

Oxygen: 63% of a process step change < 3 secs.

Drift: < 0.1% of cell output per month (< 0.005% O₂ per month with 2% O₂ applied)

Aspirator Air Requirements: 10 to 20 SCFH (4.72 to 9.4 L/min.) at 15 to 100 PSIG (1.05 to 7.04 kg/cm²)

Max. Flue Gas Temp./Probe Type/Lengths

1300°F (704°C) / 316 SS / 36" - 108" (91cm - 274 cm)
 1875°F (1024°C) / RA330 / 36" - 108" (91cm - 274 cm)
 3000°F (1649°C) / Hexoloy[®] / 24" - 72" (60 cm - 182 cm)

Max. Sample Dewpoint: 450°F (232°C)

Sample Pressure:

± 2 psig: no adjustment required
 ± 2 to ± 9 psig: software selectable
 ± 10 psig and above: consult factory

Environment:

Ambient Temp:
 -5°F to 160°F (-20°C to 71°C)
 -5°F to 140°F (-20°C to 60°C) with Div. 2 Option
 Relative Humidity: 10% to 90%, non-condensing

Enclosure: Lift-off NEMA 3R, weather resistant, stainless steel. Optional hinged NEMA 4X (IP56), explosion-proof, purged, and floor mount versions available.

Power Requirements: 115 VAC, $\pm 10\%$, 47-63 Hz, 600 VA max. (650 VA max with floor mount option); 230 VAC, $\pm 10\%$, 47-63 Hz, 1850 VA max. (1900 VA max. with floor mount option)

Calibration Gas Requirements: Use calibration gases @ 10 PSIG, 1.5 SCFH (0.70 kg/cm², 0.7 L/min.)

O₂ Span Gas: Air or from 1.0% to 100% O₂, balance N₂

O₂ Zero and Comb. Zero Gas: 2% or from 0.1 to 10% O₂, balance N₂

Comb. Span Gas: 60 to 80% (ppm ranges) or 40 to 60% (% ranges) of the selected comb. recorder output range in certified mixtures of CO + H₂, 3-4% O₂, balance N₂.

SERIES 2000 CONTROL UNIT



Display: Four-line x 20-character vacuum fluorescent. Displays combinations of oxygen, % or ppm combustibles, time and date, cell temperature, user-programmable text, thermocouple mV or cell mV. Password protection, programmable pressure compensation and context-sensitive help are also provided.

Analog Output: Two isolated linear current outputs for oxygen and one for combustibles. Select O₂, combustibles, cell temperature, thermocouple mV or cell mV. Each output can be 4-20 mA, 0-20 mA, 20-4 mA or 20-0 mA and is fully scalable. Hold or track during calibration and select degree of damping. Maximum load 1200 ohms.

Alarms: Two independent oxygen alarms, each high- or low-selectable. One alarm can be assigned as oxygen, calibrate or verify. Two high combustibles alarms. Set relays to energize or de-energize on alarm.

Contact Rating: 1 A, 30 VA max. noninductive load, AC or DC

Diagnostics: Watchdog timer and service alarms. System test for A/D, RAM, EEPROM and keypad. Display line 4 reserved for full-text error and diagnostic messages. Twenty-entry event log.

Communications: RS-485 2-way addressable.

Environment:

Ambient Temp.: 14°F to 122°F (-10°C to 50°C)
 Relative Humidity: 10% to 80%, non-condensing

Enclosure: Standard weatherproof NEMA 4 (IP 56) wall/panel mount. Optional GP (General Purpose) wall mount, GP 19" rack mount, GP panel mount, or stainless steel weatherproof NEMA 4X (IP 56) wall/panel mount. All are UL Listed for NEC Class I, Division 2 areas. Purged and explosion-proof versions also available.

Calibration: Oxygen cell lifetime extender. Calibrate or verify calibration. Store last calibration and verification data. Selectable calibration gas run time and process recovery time. Timed automatic calibration with optional Remote Calibration Unit.

Power Requirements: Nominal 115-230 VAC $\pm 10\%$, 47-63 Hz, 75 VA max.

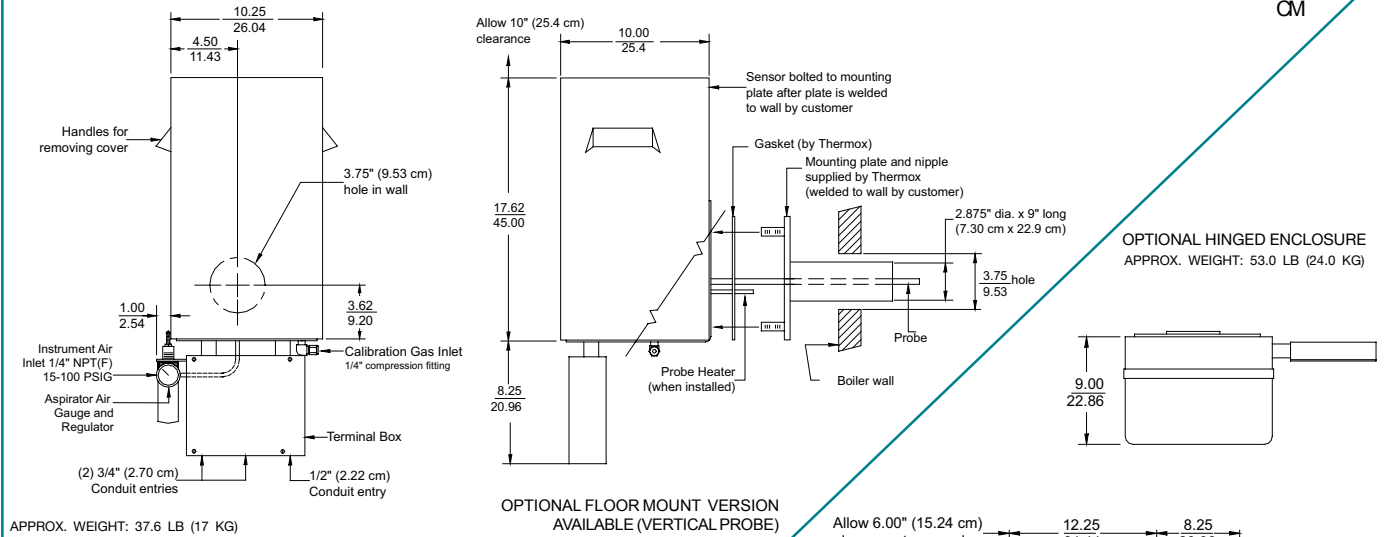
System Compliance:
 EMC Directive 89/336/EEC
 Low Voltage Directive 73/23/EEC

DIMENSIONS

SENSOR

STANDARD LIFT-OFF ENCLOSURE

INCHES
CM

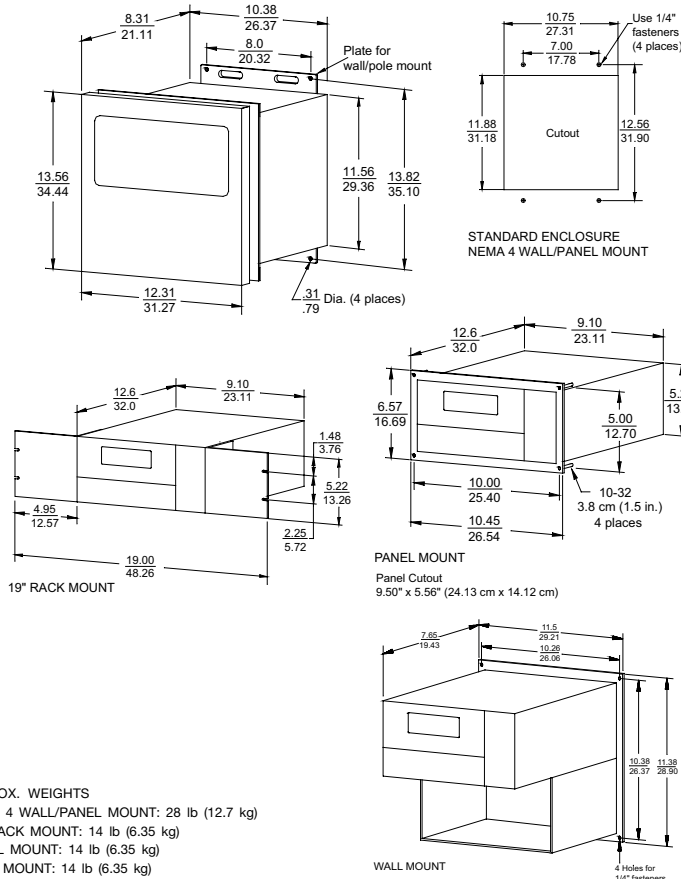


APPROX. WEIGHT: 37.6 LB (17 KG)

OPTIONAL FLOOR MOUNT VERSION AVAILABLE (VERTICAL PROBE)

OPTIONAL HINGED ENCLOSURE
APPROX. WEIGHT: 53.0 LB (24.0 KG)

CONTROL UNIT

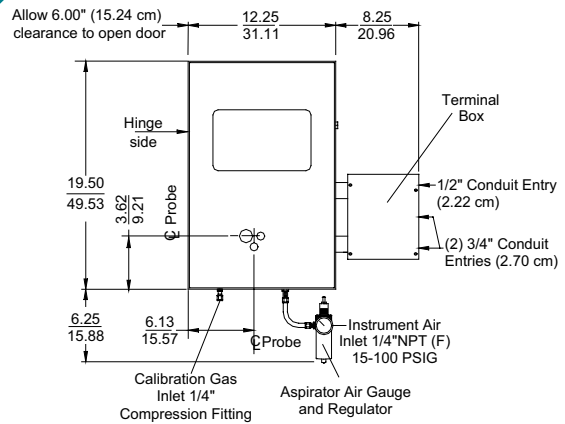


STANDARD ENCLOSURE
NEMA 4 WALL/PANEL MOUNT

PANEL MOUNT
Panel Cutout
9.50\"/>

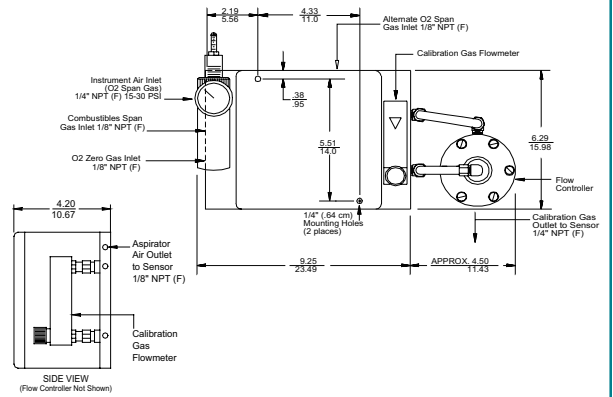
WALL MOUNT

APPROX. WEIGHTS
NEMA 4 WALL/PANEL MOUNT: 28 lb (12.7 kg)
19\"/>



REMOTE CALIBRATION UNIT

RCU ENCLOSURE NEMA 4X
APPROX. WEIGHT: 11.0 LB (5.0 KG)



NOTES: 1. All static performance characteristics are with operating variables constant. 2. System accuracy referenced to 0.1 to 10% calibrated range.

One of a family of innovative process analyzer solutions from AMETEK Process Instruments. Specifications subject to change without notice.

USA - Pennsylvania
150 Freeport Road
Pittsburgh, PA 15238
Ph. 412-828-9040
Fax 412-826-0399



CANADA
2876 Sunridge Way N.E.
Calgary, AB T1Y 7H9
Ph. 403-235-8400
Fax 403-248-3550

USA - Delaware
455 Corporate Blvd.
Newark, DE 19702
Ph. 302-456-4400
Fax 302-456-4444

USA - Oklahoma
2001 N. Indianwood Ave.
Broken Arrow, OK 74012
Ph. 918-250-7200
Fax 918-459-0165

AMETEK
PROCESS INSTRUMENTS
www.thermox.com

© 2003, by AMETEK, Inc. All rights reserved.
605PDF (P220)



SUPPORT
LOCATIONS

USA - Texas
Ph. 281-463-2820
Fax 281-463-2701

CHINA - Beijing
Ph. 86-10-85262111
Fax 86-10-85262141

CHINA - Shanghai
Ph. 86 21 6426 8111
Fax 86 21 6426 7054

FRANCE
Ph. 33 1 30 68 89 00
Fax 33 1 30 68 89 99

GERMANY
Ph. 49 21 59 91 36 0
Fax 49 21 59 91 36 80

MIDDLE EAST - Dubai
Ph. 971-4-881 2052
Fax 971-4-881 2053

SINGAPORE
Ph. 65-6484-2388
Fax 65-6481-6588