

# **Process of Land Consolidation in Czech republic**

**from the perspective in private sector**

***Dr. Tomáš VYBÍRAL***  
***GEOREAL spol. s r.o.***

*Prague Land Consolidation Workshop*  
*March 7th 2005*

# **Main phases of the Land Consolidation Process**

- 1. Determination of a region**
- 2. Surveying works**
- 3. Terrain reconnaissance**
- 4. Landowners claims**
- 5. Assessment of the common measures**
- 6. New ownership arrangement**
- 7. New calculation of balances**
- 8. Final survey, new cadastral map**
- 9. Enter new state into the land registry**

# **1. Determination of a region**

- start - definition of the LC area
- one cadastral unit - except forest and urban areas
- first (but not last) meeting / negotiation with landowners

*Start meeting with „Black souls of Valtice“*



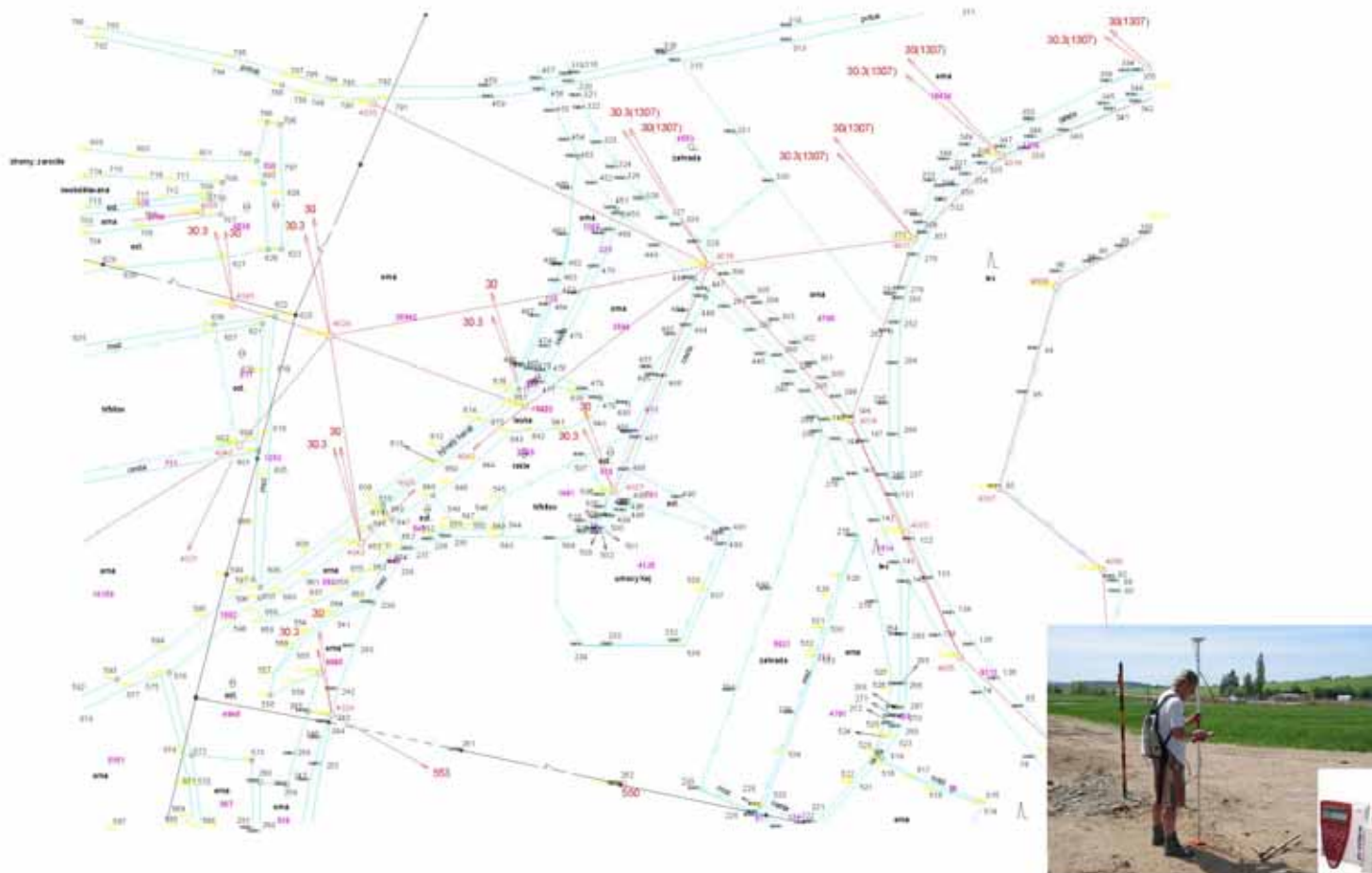
## 2. Surveying works

- precise geodetic surveys – on start / in course / on the end
- necessity of new (G)IT – SW, HW
  - *classic, GPS, digital photogrammetry, satellite, laserscanning*
- big volumes of geodata

## *Valid cadastral sheet*

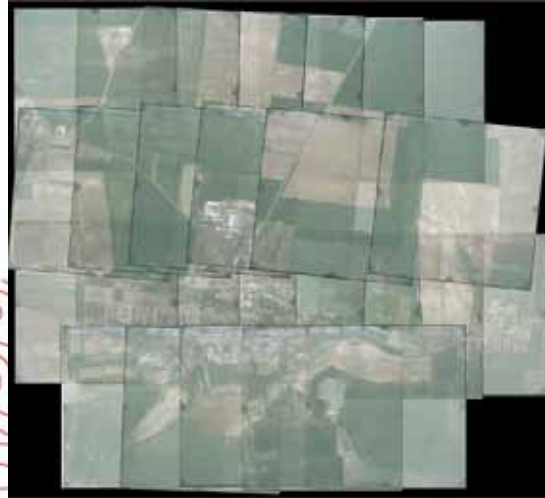


## *Survey plan and method*

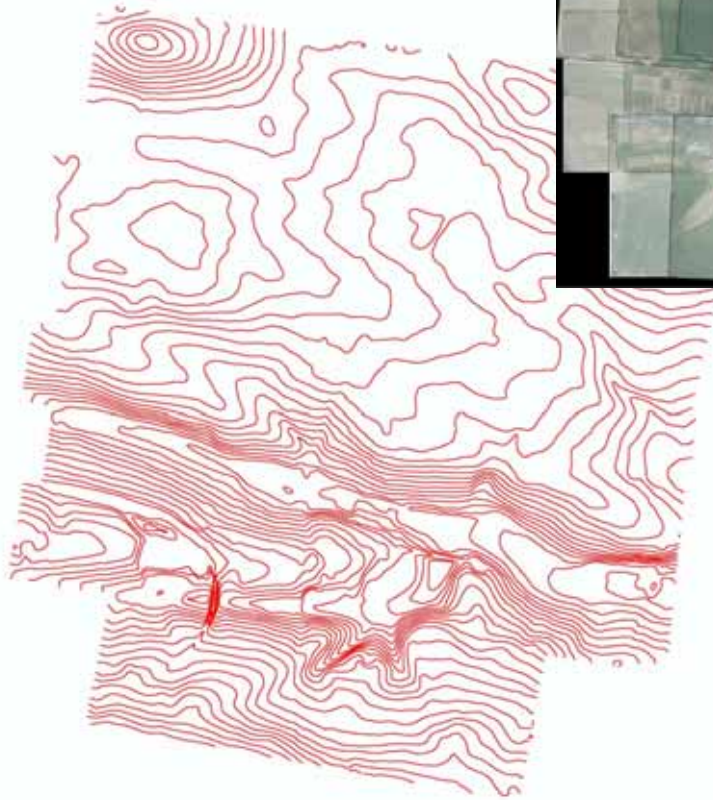


Process of Land Consolidation in Czech Republic - Prague Land Consolidation Workshop, 7 Mars 2005

*Aerial photography*



*Digital terrain model*



*Ortho-photo*





### **3. Terrain reconnaissance**

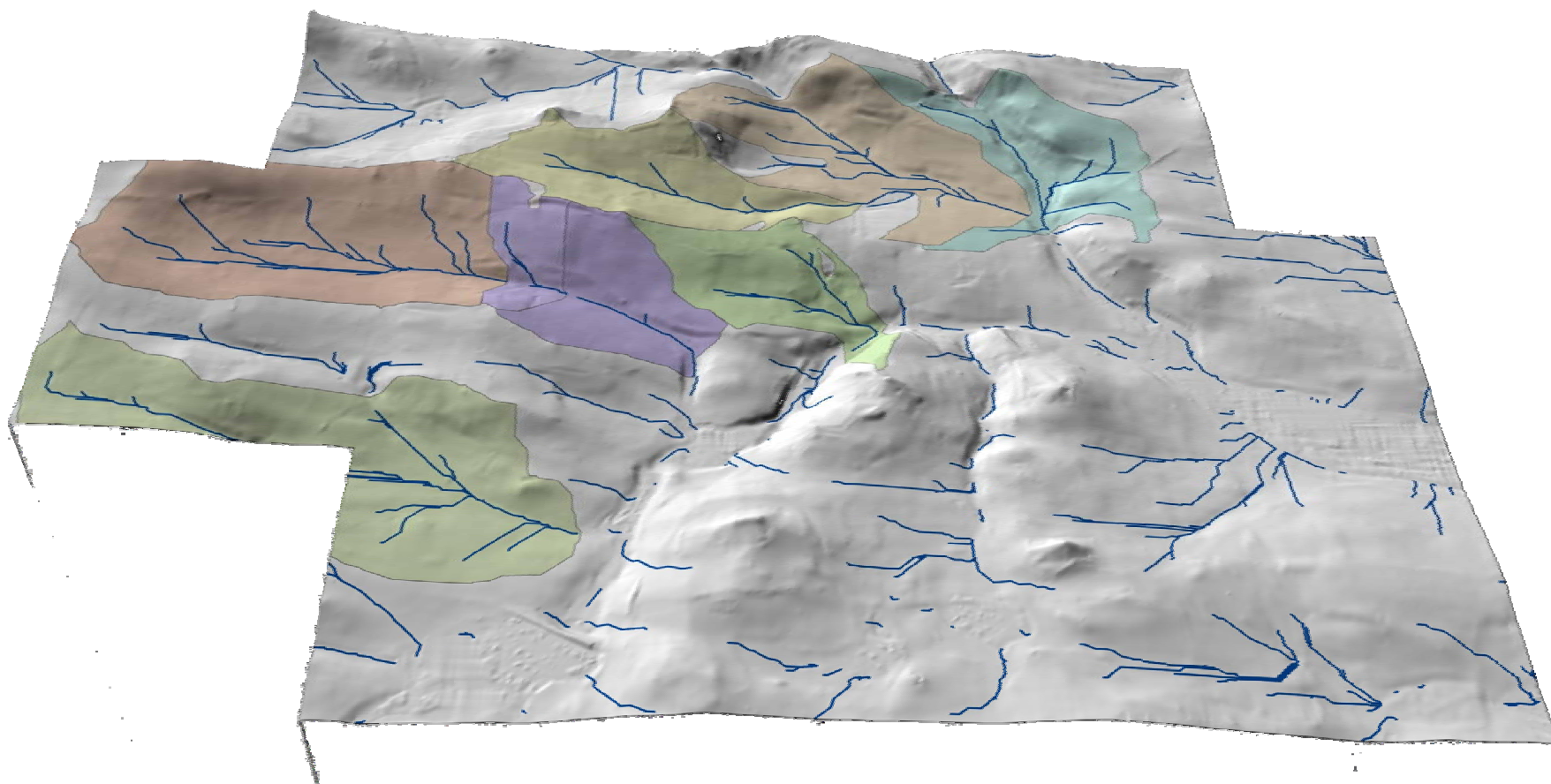
- Examination of whole area from different point of view
  - *landscape, land use, ecology ..*
- Materials and specification of state authorities
  - *protected zones, biotopes, power lines, networks, flood areas, erosion ..*
- Special plans / generals of LC area
  - *plan of water, routes, soil, biotes, erosion*
- Other terrain analysis



## *General of water*

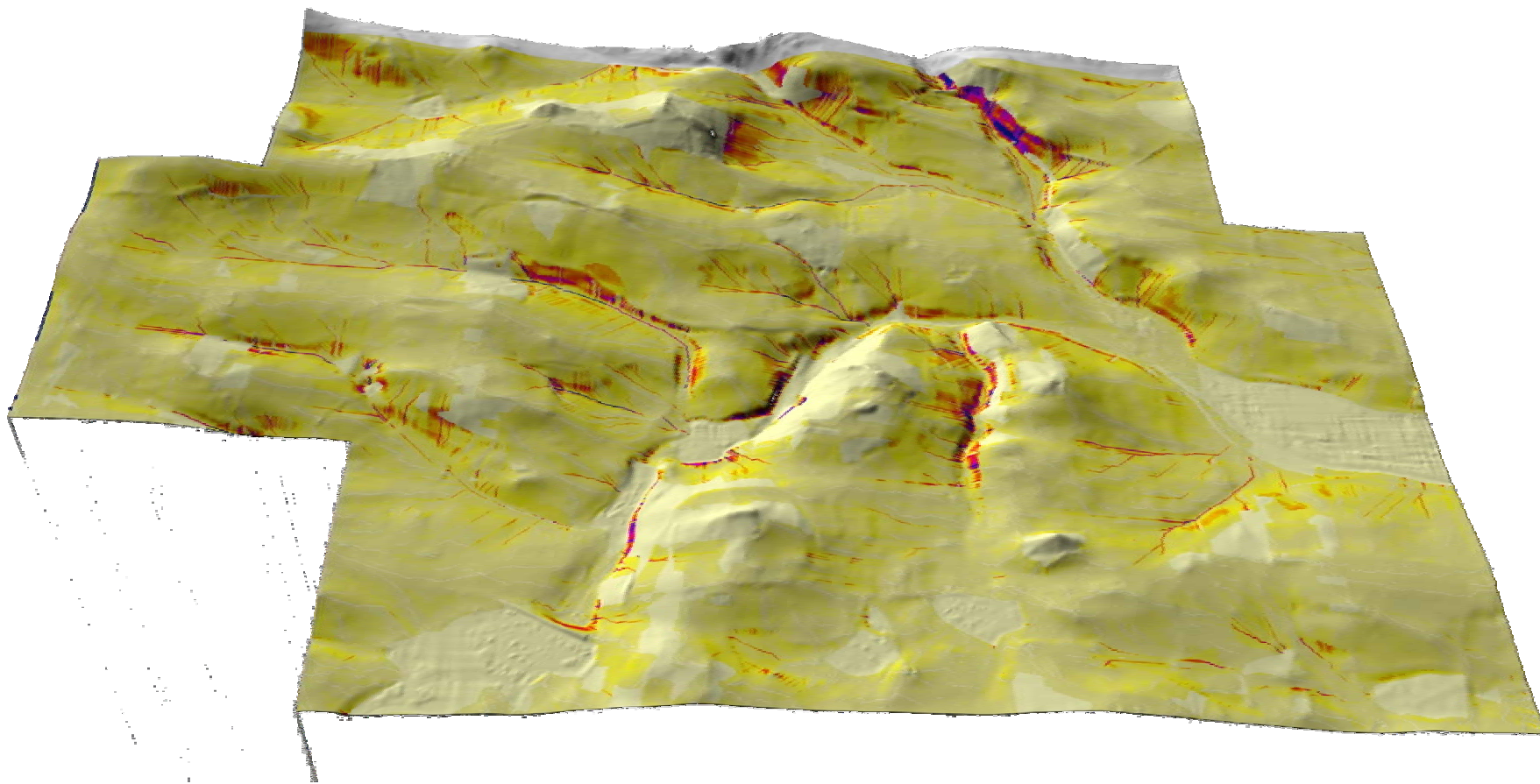


## *3D landscape analysis - water*



Process of Land Consolidation in Czech Republic - Prague Land Consolidation Workshop, 7 Mars 2005

## *3D landscape analysis - erosion*



Process of Land Consolidation in Czech Republic - Prague Land Consolidation Workshop, 7 Mars 2005

## 4. Landowners claims



Process of Land Consolidation in Czech Republic - Prague Land Consolidation Workshop, 7 Mars 2005

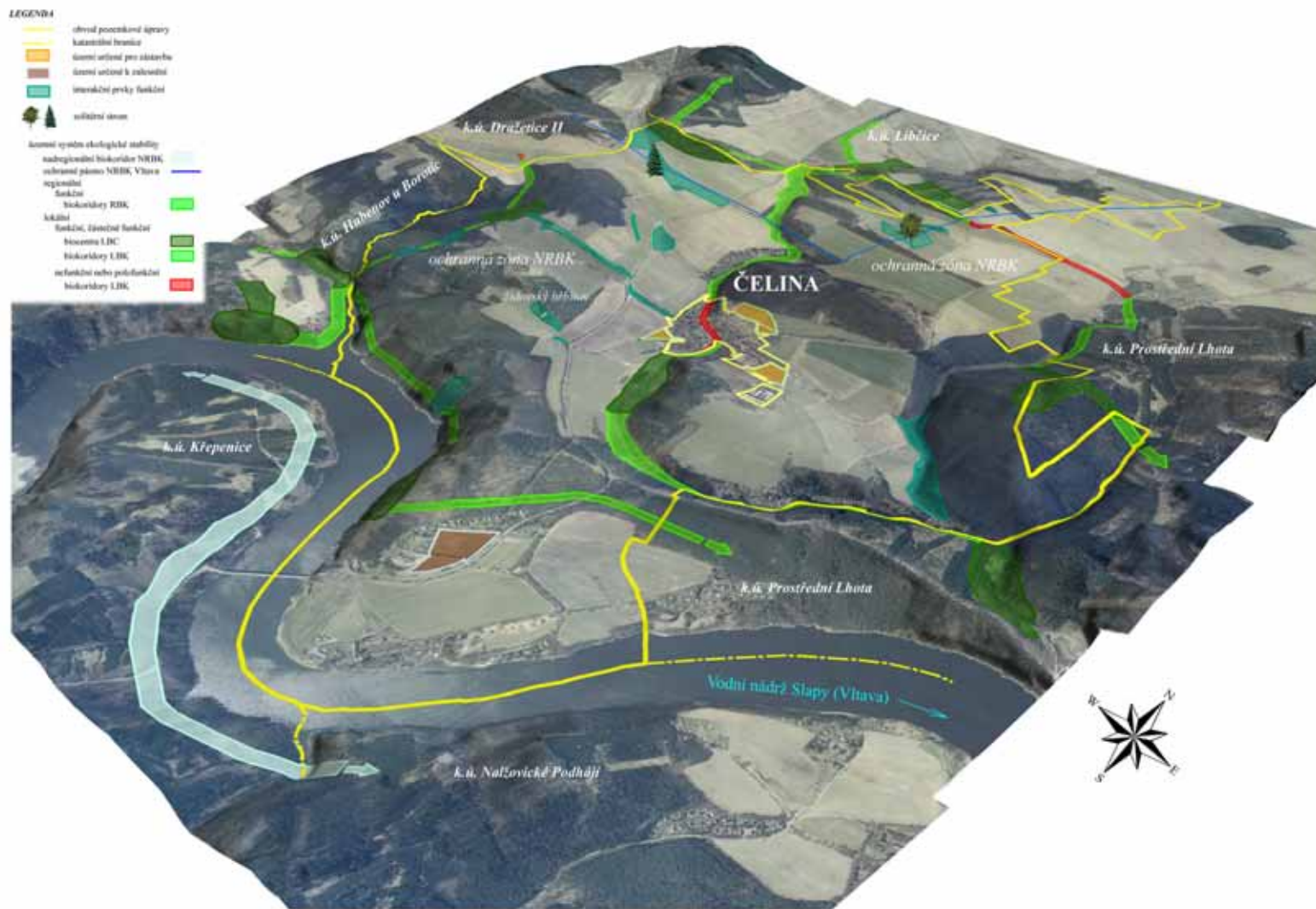
## **5. Assessment of the common measures**

- Common measures area
  - *routes, biocoridors, plot acces, soil protection measures*
- Territorial System of Ecological Stability (ÚSES)
- Multifunctional landscape skeleton





# Territorial System of Ecological Stability in 3D view



## **6. New ownership arrangement**

- The most important phase
- Psychological aspect and knowledges during negotiations
- „Satisfied everyone“ !

*New ownership arrangement*

*before LC..*

*...after LC*



## *Planned new route - animation 3D*



**7. New recalculation of balances**

**8. Final survey, creating of the new cadastral map**

**9. Enter new state into the land registry**

# **Current problems and suggestions**

- **errors and ambiguities in acts**
- **necessity of all modern G-IT capture, survey and processing methods**
- **ignorance of state officials**
- **ignorance of landowner**

# CONCLUSIONS

- Land consolidation like the most effective method for restoration of landscape in Czech republic
  - Money !
  - Funds of other sources
- 

*Thank you for your attention !*

*tomas.vybiral@georeal.cz*

*www.georeal.cz*