



# PRODUCT CATALOG

**WILLSCOT**

TM



**INTRODUCTION** ..... 04

**MOBILE OFFICES**

Models MO208 and MO248 ..... 05

Model MO328 ..... 06

Model MO3610 ..... 07

Models MO4410 and MO4412 ..... 08

Models MO5010 and MO5012 ..... 09

Models MO6012 and MO6412 ..... 10

Models SM6024 and SM6424 ..... 11

**PRODUCT INNOVATION**

FLEX™ ..... 12

Redi-Plex ..... 13

**GROUND LEVEL CONTAINER**

**OFFICES**

Models CO208 and CO408 ..... 14

Model CS408 ..... 15

**SALES OFFICES**

Models SO4812 and SO6412 ..... 16

Models SO4824 and SO6424 ..... 17

**STORAGE CONTAINERS**

Model CT208 ..... 18

Model CT408 ..... 19

**THE ESSENTIALS** ..... 20

# WE ARE PASSIONATE ABOUT SOLVING SPACE PROBLEMS

It began with the creation of an office on wheels that could move along with crews as they built miles of interstate highways in the 1950s. It continues to evolve today with panelized products that can be configured in a multitude of ways to thoughtfully curated packages – our Essentials packages with a mix of furniture, appliances and add-ons that outfit your mobile office with everything you need to be “ready to work”.

What prompts the need for additional space? The most typical reasons are company growth,

new construction, renovations, changes in school population, and both natural and man-made disasters. Our goal is to provide the best customer service in the industry and we work hard to make your leasing experience easy, efficient, and economical. Now, pairing our modular solutions with one of our Essentials packages increases the value of that service significantly and ensures you are “ready to work” from day one. You can also be assured that our products are made with durable, high quality materials that meet national and state building, electrical, mechanical and plumbing codes.

Headquartered in the historic Fell’s Point area of Baltimore, Maryland, we are proud to be the modular supplier of choice for both national corporations as well as local businesses. All of our customers are served by dedicated sales and service teams operating branches that are an integral part of local communities in over 90 locations.

The passion that began over fifty years ago is rekindled every time we connect with our customers. For us, there are no space problems just solutions.

# MODELS MO208 & MO248

## Size(s)

20' or 24' Long (including hitch)  
16' or 20' Box size  
8' Wide  
7' Ceiling height

## Interior Finish

Paneled walls  
Vinyl tile floors  
Gypsum ceiling

## Windows / Doors

Horizontal slider windows  
Two vision panel doors with  
standard locks

## Heating / Cooling

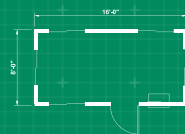
Electric baseboard heat  
Thru-wall AC unit

## Electric

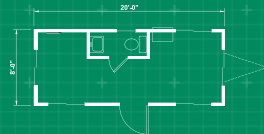
Fluorescent ceiling lights  
Breaker panel

## Exterior Finish / Frame

Aluminum siding  
I-Beam frame  
Standard drip rail gutters



Model MO208 shown



Model MO248 shown

*\*Additional floor plans available. Floor plans and specifications may vary from those shown, and are subject to in-stock availability.*

# MODEL M0328



## Size(s)

32' Long (including hitch)  
28' Box size  
8' Wide  
7' Ceiling height

## Windows / Doors

Horizontal slider windows  
Two vision panel doors with  
standard locks

## Electric

Fluorescent ceiling lights  
Breaker panel

## Interior Finish

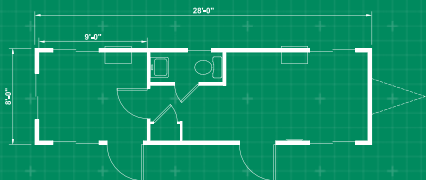
Paneled walls  
Vinyl tile floors  
Gypsum ceiling  
Private offices(s)

## Heating / Cooling

Electric baseboard heat  
Thru-wall AC unit<sup>1</sup>

## Exterior Finish / Frame

Aluminum siding  
I-Beam frame  
Standard drip rail gutters



# MODEL M03610

## Size(s)

---

36' Long (including hitch)  
32' Box size  
10' Wide  
8' Ceiling height

## Interior Finish

---

Paneled walls  
Vinyl tile floors  
Gypsum ceiling  
Private offices(s)

## Windows / Doors

---

Horizontal slider windows  
Two vision panel doors with  
standard locks

## Heating / Cooling

---

Electric baseboard heat  
Thru-wall AC unit<sup>1</sup>

## Electric

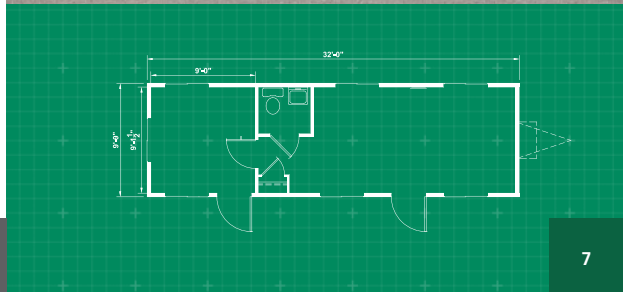
---

Fluorescent ceiling lights  
Breaker panel

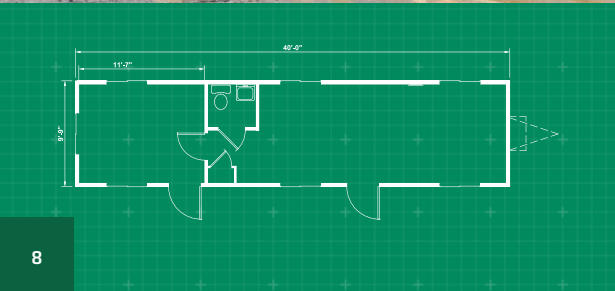
## Exterior Finish / Frame

---

Aluminum siding  
I-Beam frame  
Standard drip rail gutters



*\*Additional floor plans available. Floor plans and specifications may vary from those shown, and are subject to in-stock availability.*



# MODELS M04410 & M04412

## Size(s)

- 44' Long (including hitch)
- 40' Box size
- 10' or 12' Wide
- 8' Ceiling height

## Windows / Doors

Horizontal slider windows  
Two vision panel doors with standard locks

## Electric

Fluorescent ceiling lights  
Breaker panel

## Interior Finish

Paneled walls  
Vinyl tile floors  
Gypsum ceiling  
Private offices(s)

## Heating / Cooling

Electric baseboard heat  
Thru-wall AC unit<sup>1</sup>

## Exterior Finish / Frame

Aluminum siding  
I-Beam frame  
Standard drip rail gutters



# MODELS M05010 & M05012

## Size(s)

50' Long (including hitch)  
46' Box size  
10' or 12' Wide  
8' Ceiling height

## Interior Finish

Paneled walls  
Vinyl tile floors  
Gypsum ceiling  
Private offices(s)

## Windows / Doors

Horizontal slider windows  
Two vision panel doors with  
standard locks

## Heating / Cooling

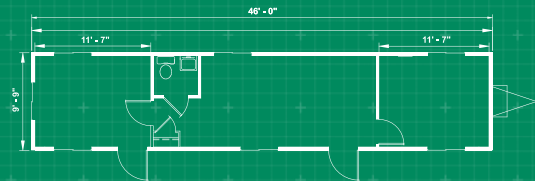
Central HVAC or thru-wall AC

## Electric

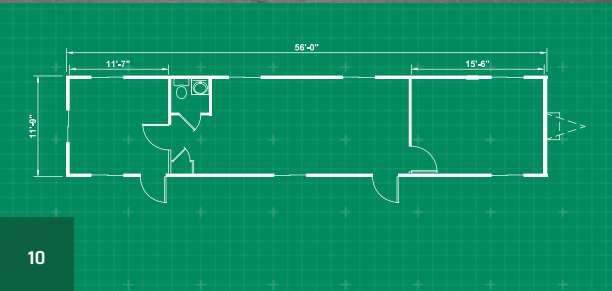
Fluorescent ceiling lights  
Breaker panel

## Exterior Finish / Frame

Aluminum siding  
I-Beam frame  
Standard drip rail gutters



*\*Additional floor plans available. Floor plans and specifications may vary from those shown, and are subject to in-stock availability.*



# MODELS M06012 & M06412

## Size(s)

- 60' or 64' Long (including hitch)
- 56' or 60' Box size
- 12' Wide
- 8' Ceiling height

## Windows / Doors

Horizontal slider windows  
Two vision panel doors with standard locks

## Electric

Fluorescent ceiling lights  
Breaker panel

## Interior Finish

Paneled walls  
Vinyl tile floors  
Gypsum ceiling  
Private office(s)

## Heating / Cooling

Central HVAC or thru-wall AC

## Exterior Finish / Frame

Aluminum siding  
I-Beam frame  
Standard drip rail gutters

# MODELS SM6024 & SM6424

## Size(s)

60' or 64' Long (including hitch)  
56' or 60' Box size  
12' or 24' Wide  
8' Ceiling height  
Other double-wide sizes available

## Interior Finish

Paneled walls  
Vinyl tile floors  
Gypsum ceiling  
Private offices

## Windows / Doors

Horizontal slider windows  
Two vision panel doors with  
standard locks

## Heating / Cooling

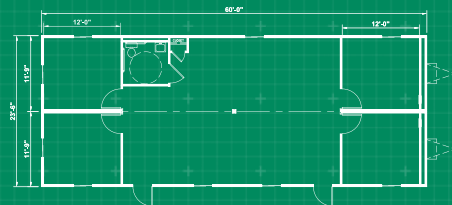
Central HVAC or thru-wall AC

## Electric

Fluorescent ceiling lights  
Breaker panel

## Exterior Finish / Frame

Aluminum siding  
I-Beam frame  
Standard drip rail gutters



*\*Additional floor plans available. Floor plans and specifications may vary from those shown, and are subject to in-stock availability.*



# FLEX™

## Size(s)

---

20' Long

8' Wide

9' 6" Ceiling height

Additional floor plans can be created by coupling and stacking individual units together

## Panels / Wall Covering

---

Metal clad insulated panels

Polyurethane insulation (R-14)

## Windows

---

PVC frame

Tilt & turn opening

Double glazing with shutter

## Doors

---

Insulated metal with aluminum frame, transom

## Phone / Data

---

Cat 6 2 each per module)

## Electric

---

60 A.; 120/240v.; 1ph per unit

## Floor

---

Tapiflex reinforced vinyl covering  
High specimen mineral wool insulation (R-20)

## Heating / Cooling

---

Combination through wall heat/cool unit with timer and remote control

*\* Product available in select locations only.*

# REDI-PLEX

## Clear span portable office space for more permanent needs

When your business requires a larger, more permanent space solution our Redi-Plex buildings are the perfect solution. Durable, secure and easily configured to meet your needs, our Redi-Plex buildings offer advanced versatility. Large, open floorplans are created using clear span construction, eliminating interference from support columns. Whether you need an open floorplan or a custom layout with private offices, conferences rooms or break areas, our Redi-Plex buildings provide the flexibility to create the exact space you need. All

of our Redi-Plex buildings are made with durable, high quality materials that meet national and state building, electrical, mechanical and plumbing codes and are supported by the best customer service in the industry. We also provide a variety of additional products, including steps, ramps, and awnings, and convenient furniture packages thoughtfully designed to fit your space, saving you time and money, so that your space is outfitted with everything you need to be ready to work.



*\*Additional floor plans available. Floor plans and specifications may vary from those shown, and are subject to in-stock availability.*

# MODELS C0208 & C0408



## Size(s)

20' or 40' Long (including hitch)  
8' Wide  
8' Ceiling height

## General

Skid mounted office unit is constructed using one-trip ISO shipping container unit.

## Roof Structure

Exterior panels are white with green trim / border color.

## Windows / Doors

High single glazed windows  
Hollow metal doors

## Insulation R-Values

Roof: R-13  
Walls: R-13

## Floor

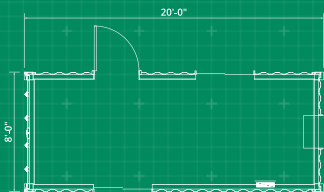
Tile with vinyl wall base

## Heating / Cooling

Environmentally controlled with heat and AC

## Electrical

MC Cable  
Distrobution panels, 102/208/230V, 1ph  
Duplex receptacles  
Toggle type switches control interior lighting



# MODEL CS408

## Size(s)

20' or 40' Long (including hitch)  
8' Wide  
8' Ceiling height  
15' Office space / 25' Storage

## General

Skid mounted office unit is constructed using one-trip ISO shipping container unit.

## Floor

Tile with vinyl wall base

## Windows / Doors

High single glazed windows  
Hollow metal doors

## Insulation R-Values

Roof: R-13  
Walls: R-13

## Roof Structure

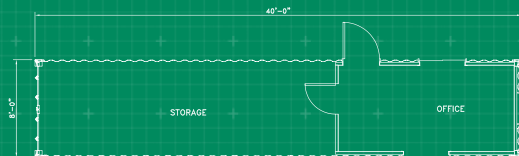
Prefinished interior ceiling panel with matching battens

## Heating / Cooling

Environmentally controlled with heat and AC

## Electrical

MC Cable  
Distrobution panels, 102/208/230V. 1ph  
Duplex receptacles  
Toggle type switches control interior lighting.



*\*Additional floor plans available. Floor plans and specifications may vary from those shown, and are subject to in-stock availability.*



# MODELS S04812 & S06412

## Size(s)

48' or 64' Long (including hitch)  
44' or 60' Box size  
12' Wide  
8' Ceiling height

## Features

Large display / reception area  
Private office(s)  
Carpeting throughout  
ADA Restroom  
Coffee bar

## Windows / Doors

Large glass windows  
Recessed french door  
Vision panel doors with  
standard locks

## Interior Finish

Vinyl covered gypsum walls  
Commercial carpeting  
Gypsum ceiling

## Heating / Cooling

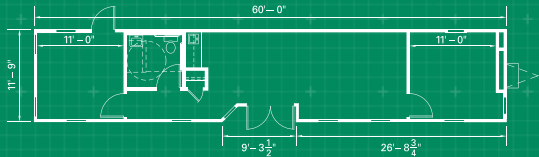
Central HVAC and duct heating

## Electric

Fluorescent ceiling lights  
Breaker panel

## Exterior Finish / Frame

I-Beam frame  
T1-11 siding  
Standard drip rail gutters





# MODELS S04824 & S06424

## Size(s)

- 48' or 64' Long (including hitch)
- 44' or 60' Box size
- 24' Wide
- 8' Ceiling height

## Features

- Large display / reception area
- Private office(s)
- Carpeting throughout
- ADA Restroom
- Coffee bar

## Windows / Doors

Large glass windows  
Recessed french door  
Vision panel doors with standard locks

## Interior Finish

Vinyl covered gypsum walls  
Commercial carpeting  
Gypsum ceiling

## Heating / Cooling

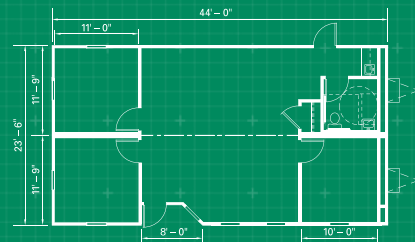
Central HVAC and duct heating

## Electric

Fluorescent ceiling lights  
Breaker panel

## Exterior Finish / Frame

I-Beam frame  
T1-11 siding  
Standard drip rail gutters



*\*Additional floor plans available. Floor plans and specifications may vary from those shown, and are subject to in-stock availability.*

# MODEL CT208



## Size(s)

20' Length

8' Wide

Additional lengths available in some areas

## Features / Services

High security metal

High security locking systems

Ground level entry

Short or long-term on-site storage

Immediate availability

## Locking Systems

Tamper-proof lock boxes: Cover prevents bolt cutters from cutting through lock

The Enforcer: Lock cannot be opened without a special key. Fits all containers and semi-type storage trailers.

Master lock box: Locking system with locks that cannot be removed with bolt cutters

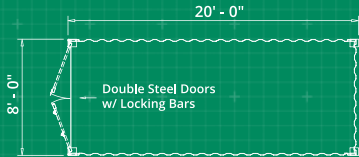
## Shelving

Easy to install: No tools required  
Uses existing D-rings: No container modifications

Heavy duty: Securely holds your materials

Adjustable: Holds a variety of material sizes and lengths

Removable: Easily relocated and reconfigured



# MODEL CT408

## Size(s)

40' Length

8' Wide

Additional lengths available in some areas

## Features / Services

High security metal

High security locking systems

Ground level entry

Short or long-term on-site storage

Immediate availability

## Locking Systems

Tamper-proof lock boxes: Cover prevents bolt cutters from cutting through lock

The Enforcer: Lock cannot be opened without a special key. Fits all containers and semi-type storage trailers.

Master lock box: Locking system with locks that cannot be removed with bolt cutters

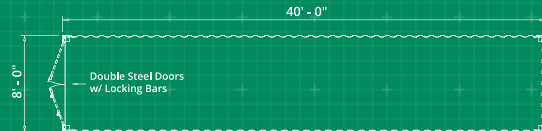
## Shelving

Easy to install: No tools required  
Uses existing D-rings: No container modifications

Heavy duty: Securely holds your materials

Adjustable: Holds a variety of material sizes and lengths

Removable: Easily relocated and reconfigured



*\*Additional floor plans available. Floor plans and specifications may vary from those shown, and are subject to in-stock availability.*

# READY TO WORK

## The fully streamlined space solution.

When it's time to be productive on a project, you need temporary space that's as ready as you are. Our modular solutions are complete to the last detail, so you can forget about building logistics and focus on the job at hand. One call to WillScot and you're ready to work.

When the solution is perfect, productivity is all you see.

### SIZED FOR YOU

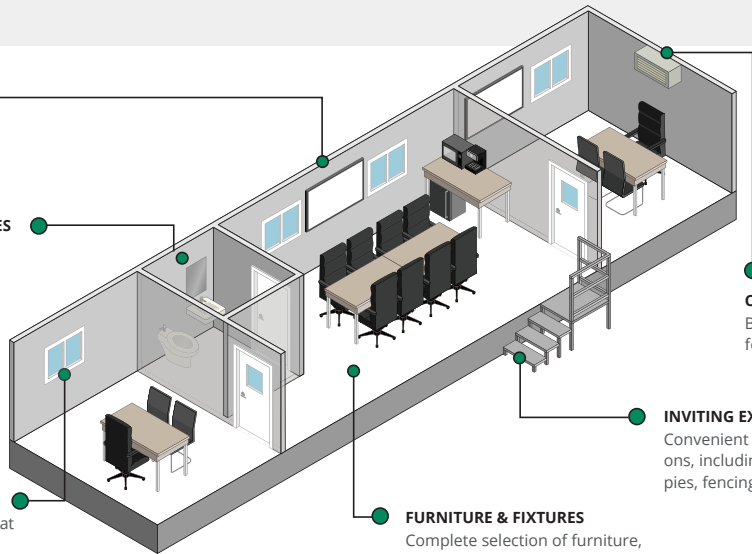
A perfect fit, from compact to spacious to stackable

### CONVENIENT FACILITIES

Optional restroom available in almost any unit

### BRIGHTEN YOUR DAY

Windows and doors that keep your workspace open and well-lit



### CLIMATE CONTROL

Built-in central HVAC for year-round comfort

### INVITING EXTERIORS

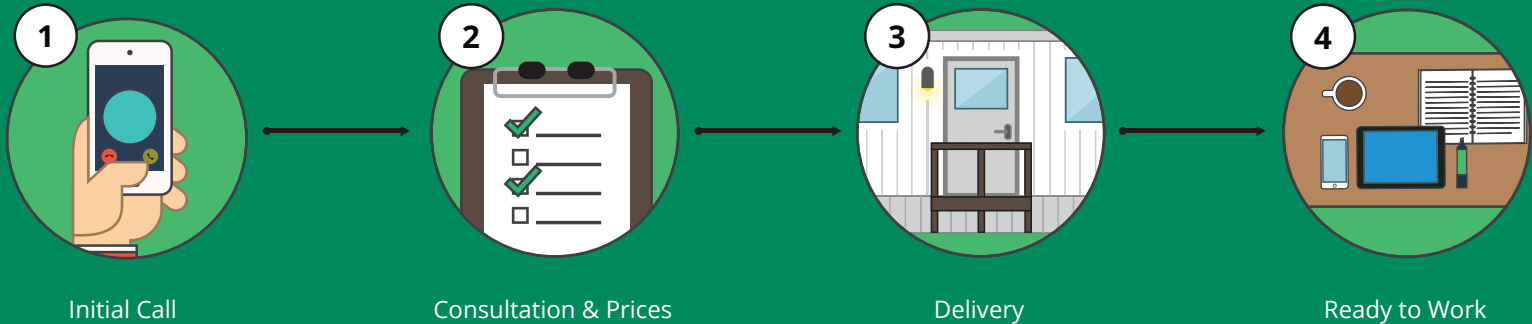
Convenient and accessible additions, including ramps, steps, canopies, fencing, security and more

### FURNITURE & FIXTURES

Complete selection of furniture, workplace appliances and lighting and flooring options

# ONE STOP SHOP

From building configuration to delivery to setup, we cover every detail to make your job easier.



# THE ESSENTIALS

## Office Area

From basic desks to semiprivate work areas, we can provide the necessary furniture and storage that make your workspace a productive one.



## Common Space Area

Our furniture and solutions facilitate collaborative working and training while addressing common space needs.



## Break Room Area

From a short break to full lunchtime needs, our refrigeration, cooking and coffee mess items outfit a space that will keep your employees fueled up and at the top of their game.



## Outside Area

We've developed packages specifically addressing the exterior needs of your workspace as well. All are designed to Increase the safety, accessibility or security of your temporary office.





800.782.1500 | [WILLSCOT.COM](http://WILLSCOT.COM)

WILLSCOT, INC. CORPORATE HEADQUARTERS  
901 S Bond Street Suite 600 • Baltimore, MD • 21231

A series of parallel, slanted lines in a teal color, located at the bottom right of the page.