



Product Catalogue 2018

**Specialists in the Lifting Equipment and Non
Destructive Testing Industry for Over 30 Years**



bsi.

Interactive Text Contents Page



Company Introduction
Page 4



Company Accreditations
Page 5



Lifting Equipment Services
75 tonne Vertical Gantry
Page 6



Lifting Equipment Services
150 tonne Horizontal Bed
Page 7



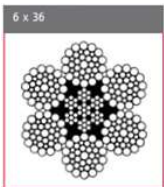
Non-Destructive Testing
Services – MPI and DPI
Page 8



Non-Destructive Testing
Services – VT and ET
Page 9



Wire Rope Slings
BSEN13414-1 and DNV
Page 10



Wire Rope
Sling Fittings
Page 11



Webbing Slings BSEN1492-1
Round Slings BSEN1492-2
Page 12



Green Pin Grade 6 G-4163
Safety Bow Shackles
Page 13



Green Pin Grade 6 G-4161
Screw Pin Bow Shackles
Page 14



Green Pin Grade 8 G-5163
Polar Safety Bow Shackles
Page 15



Gunnebo Grade 8
Arctic Safety Bow Shackles
Page 16



BS 3032
Small Screw Pin Dee Shackle
Page 17



BS 3032
Large Screw Pin Dee Shackle
Page 18



Various Additional Shackles
Page 19



Master Links
EN1677-4
Page 20



Quad Assemblies
EN1677-4
Page 21

Interactive Text Contents Page



Chain Sling Assemblies
BSEN818-4 and DNV2.7-1
Page 22



Chain Sling
Component Parts
Page 23



Weld On Deck Plates
Page 24



Weld On Lashing Points
Page 25



Metric Collared Eyebolts
Page 26



UNC Collared Eyebolts
Page 27



DIN 580
Stainless Steel Eyebolts
Page 28



Bow Nuts and Eye Nuts
Page 29



RUD VLBG
Swivel Hoist Rings
Page 30



RUD VRS
Starpoint Lifting Eyes
Page 31



Hoisting Equipment
Chain Blocks and Pull Lifts
Page 32



Pulling Machines,
Clamps and Trollies
Page 33



Wire Rope Sockets
Wirelock Resin Kits
Page 34



Closed Body Rigging Screws
Page 35



Webbing and Chain
Ratchet Assemblies
Page 36



NDT Equipment and
Consumables
Page 37



Height Safety
Page 38



Miscellaneous Products
Page 39

Our Company Policy

Independent Lifting Services Ltd (ILS) was founded in 1984 by Chris Tedstone. The Company's products and services range from manufacture and repair of all types of lifting equipment, verification of lifting equipment, including wire slings, shackles, containers, baskets, etc., for onshore and offshore use. It also provides technical services for the engineering industry, including the provision on non-destructive examination of product and equipment on either customer's premises or ILS premises.

The Company is accredited by Det Norske Veritas (DNV) to ISO 9001, is a full member of the Lifting Equipment Engineers Association (LEEAA) and has a membership to the British Standards Institute. These accreditations and memberships ensure we always work to the highest and most up to date standards available.

The Company employs LEEAA qualified Engineers, ASNT and PCN qualified NDT Inspectors, Managers, Office Administrators and Directors, and together make every effort to carry out an excellent service for the customers in a friendly environment. ILS provides training and examinations for employees to further their qualifications.

Our Team

Our team members are always on hand to help you with your enquiry. Any member of our team can be contacted via telephone 01493 650952 or their own personal email addresses.

Neil King can also be contacted outside of normal working hours.

Jane Tedstone – Company Director

Nicholas Brown – Technical Director - Nicholas@independentlifting.com
Contact for technical queries and advice relating to NDT and Quality Assurance.

Michael Brown – Sales Manager - Mickey@independentlifting.com
Contact for all general sales enquiries.

Jason Brown – Quality Manager - Jason@independentlifting.com
Contact for Quality Assurance and IT related queries including Independent Lifting Services on-line certification database.

Neil King – Sales Coordinator - Neil@independentlifting.com - 07775428174
Contact for arranging load testing and visual inspection of lifting and plant equipment and all sales enquiries.

Jamie Hollis – Workshop Foreman – Jamie@independentlifting.com
Contact for arranging load testing and visual inspection of lifting and plant equipment.

Nicky Williams – Certification Administrator - Nicky@independentlifting.com
Contact for all certification related queries.

Kim Baker – Certification Administrator Assistant – Kim@independentlifting.com
Contact for all certification related queries.

At Independent Lifting Services we always ensure that all customer requirements are met to the highest possible standard. All of our services are regularly audited by DNV (Det Norske Veritas) to ISO 9001. We are also full members of the Lifting Equipment Engineers Association. This ensures that we always inspect and supply lifting equipment to the highest possible standards. We hold a DNV type approval to manufacture wire rope slings to DNV 2.7-1, DNV2.7-3, BS EN 12079-2 and BSEN13414-1. We also have a recurring membership to the British Standards Institute to ensure we only use the most up to date standards available.



We offer a wide range of Lifting Equipment Services. We offer on-site and off-site inspections in accordance with the requirements of the Lifting Operations and Lifting Equipment Regulations (LOLER). This includes 6 monthly inspections of onshore and offshore containers including wire rope slings and shackles and all loose lifting equipment.

We are able to inspect various types of plant equipment including but not limited to – Forklifts, Cherry Pickers, Scissor Lifts, HIAB's and Cranes.

We have an on-site vertical 75 tonne working load limit gantry capable of carrying out load tests to worldwide recognised standards such as DNV2.7-1, DNV2.7-3, BSEN 12079 and various other customer requirements.

We welcome all surveyors and customers to witness any of this load testing taking place.

We can also provide vertical impact testing (drop testing) as required in DNV and BSEN12079 standards, up to 25 tonnes.



We have an on-site 150 tonne horizontal tensile test bed. This is the largest tensile test bed in the local area. This is capable of performing tensile tests up to 150 tonne. We can also offer a destruction test service for pieces of equipment that need to be destroyed to prove their effective Working Load Limit and any required safety factors. Our test bed is calibrated on a yearly basis to ensure all readings are accurate to ISO 7500-1.

With the below Overall Dimensions we are able to accommodate almost every piece of lifting equipment requiring a tensile or destruction test.

Overall Machine Length - 14 metres - Overall Machine Width - 1.5 metres
Overall Machine Height - 2.1 metres - Distance between Main Frames - 1.1 metres
Maximum Pin Jaw Centres - 7 metres



We also offer a 6 monthly inspection of all lifting equipment kept at your premises. This equipment can be colour coded with a different colour once every 6 months to clearly show all of your employees which equipment is safe to use. Your company can be added to our database and we will contact you two weeks prior to your equipment needing re-inspection, to ensure the lifting equipment you use on an everyday basis is always safe to use.



We can offer a wide range of Non Destructive Testing Services both on-site and off-site at your premises. We have qualified NDT inspectors in Magnetic Particle Inspection (MPI / MT), Dye Penetrant Inspection (DPI / PT) and Visual Weld Inspection (VT).

Our NDT inspectors hold qualifications in ASNT and PCN. We have an in house level III NDT inspector. This enables us to write our own NDT procedures. We also have the Institute of Mechanical Engineers sign and approve our NDT procedures.

Magnetic Particle Testing

We can carry out MPI/MT inspections both at our premises and on customer premises where required. We are able to carry out Magnetic Particle Inspections using the Black and White Method (Pictured Left) and the Fluorescent Method (Pictured Right).



Dye Penetrant Inspection

We can carry out DPI/PT inspections both at our premises and on customer premises where required. We are able to carry out Dye Penetrant Inspections using the colour contrast method. Penetrant applied to component (Pictured Left) Developer applied after the cleaning process with indication found (Pictured Right).



Visual Weld Inspection

We can carry out VT inspections both at our premises and on customer premises where required. The visual inspection of welds is now a required inspection process in worldwide recognised standards such as DNV2.7-1, DNV2.7-3 and BSEN12079. A VT inspection can

highlight a number of defects before another method of NDT is carried out.

The picture on the left shows a weld with a good profile and welding technique.

The picture on the right shows the type of weld that would fail a VT inspection.



Eddy Current Inspection

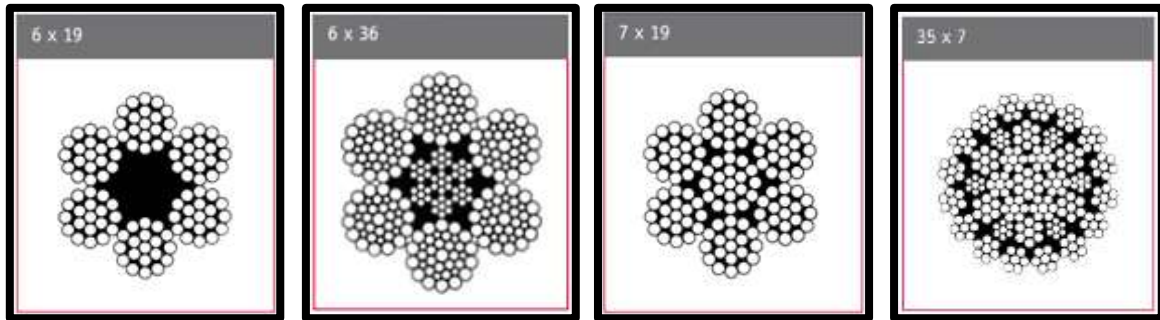
We can carry out ET inspections both at our premises and on customer premises where required. Eddy current inspection is a popular NDT method where the removal of paint or protective coatings is not desired. The picture below shows a standard Eddy Current Machine which shows the read out that the inspector would interpret to determine if any defects or indications have been found.



We have two on-site wire rope presses capable of pressing up to 600tonne (Pictured Left) and a hand press capable of pressing up to 40tonne (Pictured Right). This means we can press wire rope from 2mm in diameter up to 40mm in diameter. These presses along with our ISO 9001 accreditation and DNV Sling Type approval mean we are able to manufacture wire rope slings to BSEN13414-1, DNV2.7-1, DNV2.7-3 and BSEN12079-2. We stock a large variety of wire rope, master links and quad assemblies. We can make any sling required including single, two, three, four and five leg wire rope slings with a very quick turnaround.



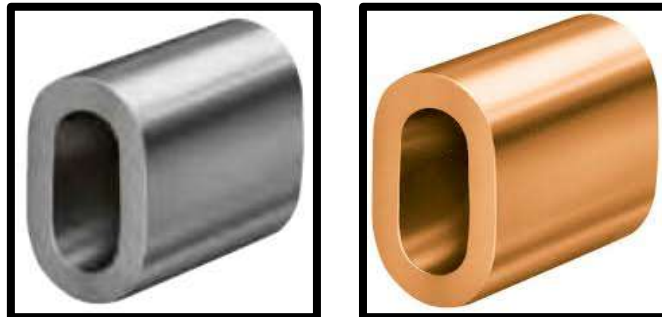
We stock a large variety of wire rope in various constructions. We can offer fibre core (f/c), independent wire rope core (IWRC), stainless steel (S/S) and non-rotating. We stock wire rope from 2mm in diameter up to 40mm in diameter.



We stock wire rope thimbles to suit all of the above wire rope sizes. These are available in a galvanised coating to BSEN13411-1 and in stainless steel.



We stock aluminium ferrules to BSEN 13411-3 and copper ferrules to suit above wire sizes.



We also stock a variety of wire rope grips for use with the above wire rope. These are available in BS EN 13411-5 (DIN 1142), federal spec, stainless steel and commercial.



We have a large stock of polyester webbing slings from WLL 1tonne, 1metre EWL to WLL 6tonne, 6metre EWL. Additional tonnages and lengths are available on request. We are able to supply webbing slings up to a WLL 40tonne with widths ranging from 25mm to 300mm to almost any length required. These webbing slings are manufactured in accordance with BS EN 1492-1 ensuring a very high quality product.



We have a large stock of polyester round slings from WLL 1tonne, 0.5metre EWL to WLL 5tonne, 6metre EWL. Additional tonnages and lengths are available on request. We are able to supply round slings up to a WLL 200tonne with lengths ranging from 250mm to 65 metres. These round slings are manufactured in accordance with BS EN 1492-2 ensuring a very high quality product.



Chart outlining the WLL of polyester slings in different lifting arrangements.

Mode	straight	choked	basket	0-45 deg	45-60 deg	0-45 deg	45-60 deg	0-45 deg	45-60 deg	0-45 deg	45-60 deg	0-45 deg	45-60 deg	0-45 deg	45-60 deg	
M*	M=1	M=0.8	M=2	M=1.4	M=1	M=0.7	M=0.5	M=1.4	M=1	M=1.12	M=0.8	M=1.4	M=1	M=2.1	M=1.5	
Sling WLL in tonnes	WLL for single sling								WLL for a pair of slings				WLL for a two leg sling		WLL for a three & four leg sling	
1.0	1.0	0.8	2.0	1.4	1.0	0.7	0.5	1.4	1.0	1.12	0.8	1.4	1.0	2.1	1.5	
2.0	2.0	1.6	4.0	2.8	2.0	1.4	1.0	2.8	2.0	2.24	1.6	2.8	2.0	4.2	3.0	
3.0	3.0	2.4	6.0	4.2	3.0	2.1	1.5	4.2	3.0	3.36	2.4	4.2	3.0	6.3	4.5	
4.0	4.0	3.2	8.0	5.6	4.0	2.8	2.0	5.6	4.0	4.48	3.2	5.6	4.0	8.4	6.0	
5.0	5.0	4.0	10.0	7.0	5.0	3.5	2.5	7.0	5.0	5.60	4.0	7.0	5.0	10.5	7.5	
6.0	6.0	4.8	12.0	8.4	6.0	4.2	3.0	8.4	6.0	6.72	4.8	8.4	6.0	12.6	9.0	
8.0	8.0	6.4	16.0	11.2	8.0	5.6	4.0	11.2	8.0	8.96	6.4	11.2	8.0	16.8	12.0	
10.0	10.0	8.0	20.0	14.0	10.0	7.0	5.0	14.0	10.0	11.20	8.0	14.0	10.0	21.0	15.0	
12.0	12.0	9.6	24.0	16.8	12.0	8.4	6.0	16.8	12.0	13.44	9.6	16.8	12.0	25.2	18.0	
15.0	15.0	12.0	30.0	21.0	15.0	10.5	7.5	21.0	15.0	16.80	12.0	21.0	15.0	31.5	22.5	
20.0	20.0	16.0	40.0	28.0	20.0	14.0	10.0	28.0	20.0	22.40	16.0	28.0	20.0	42.0	30.0	
25.0	25.0	20.0	50.0	35.0	25.0	17.5	12.5	35.0	25.0	28.00	20.0	35.0	25.0	52.5	37.5	
30.0	30.0	24.0	60.0	42.0	30.0	21.0	15.0	42.0	30.0	33.60	24.0	42.0	30.0	63.0	45.0	
35.0	35.0	28.0	70.0	49.0	35.0	24.5	17.5	49.0	35.0	39.20	28.0	49.0	35.0	73.5	52.5	
40.0	40.0	32.0	80.0	56.0	40.0	28.0	20.0	56.0	40.0	44.80	32.0	56.0	40.0	84.0	60.0	
50.0	50.0	40.0	100.0	70.0	50.0	35.0	25.0	70.0	50.0	56.00	40.0	70.0	50.0	105.0	75.0	
60.0	60.0	48.0	120.0	84.0	60.0	42.0	30.0	84.0	60.0	67.20	48.0	84.0	60.0	126.0	90.0	
70.0	70.0	56.0	140.0	98.0	70.0	49.0	35.0	98.0	70.0	78.40	56.0	98.0	70.0	147.0	105.0	
80.0	80.0	64.0	160.0	112.0	80.0	56.0	40.0	112.0	80.0	89.60	64.0	112.0	80.0	168.0	120.0	
90.0	90.0	72.0	180.0	126.0	90.0	63.0	45.0	126.0	90.0	100.80	72.0	126.0	90.0	189.0	135.0	
100.0	100.0	80.0	200.0	140.0	100.0	70.0	50.0	140.0	100.0	112.00	80.0	140.0	100.0	210.0	150.0	

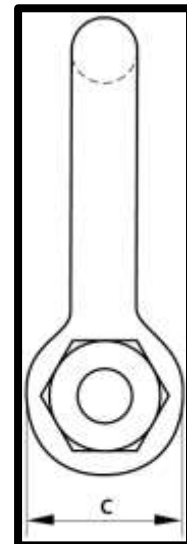
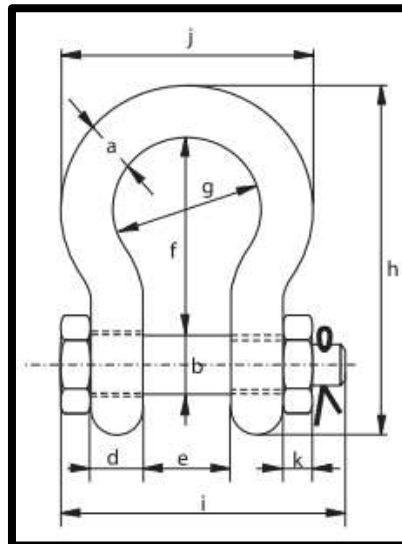
*M = Mode factor for symmetrical loading. Handling tolerance for slings or parts of slings indicated as vertical = 6 degrees.
The angles detailed above; 0-45 degrees and 45-60 degrees are both relative to the vertical.

Shackles – Grade 6 G-4163 Green Pin Safety Bow

[Back to Contents](#)

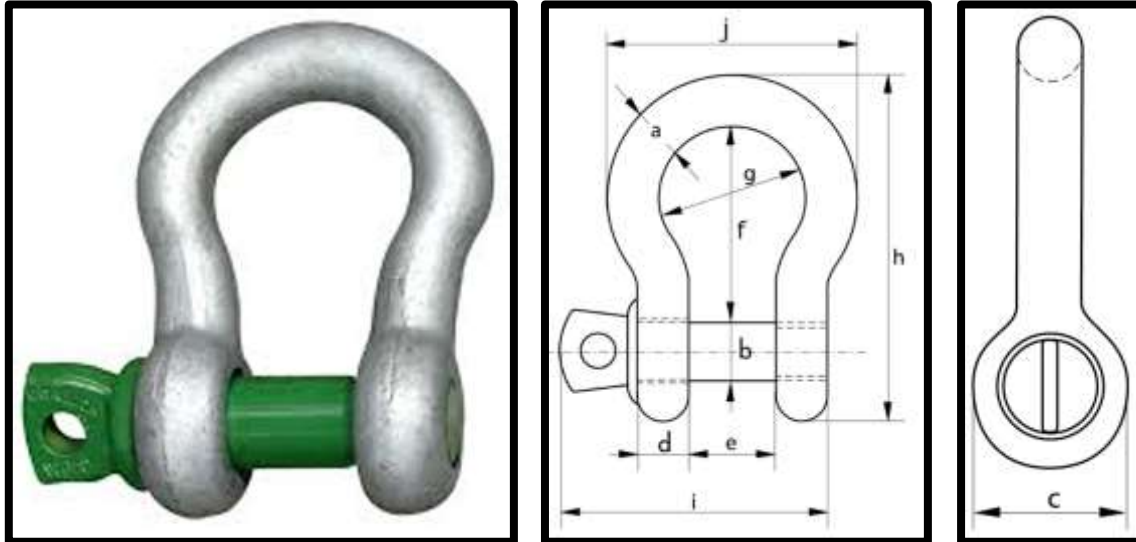
We stock Grade 6 G-4163 Green Pin Safety Bow Shackles ranging from 0.5 tonne to 85 tonne. These shackles are manufactured to BSEN13889. They also meet performance requirements of US Fed Spec RR-C-271, Type IVA Class 3, Grade A and can be certified for use with wire rope slings in accordance with DNV2.7-1, DNV 2.7-3 and BSEN12079-2.

These shackles can be used in temperature ranges from -20°C up to 200°C.



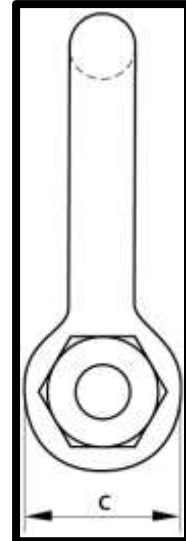
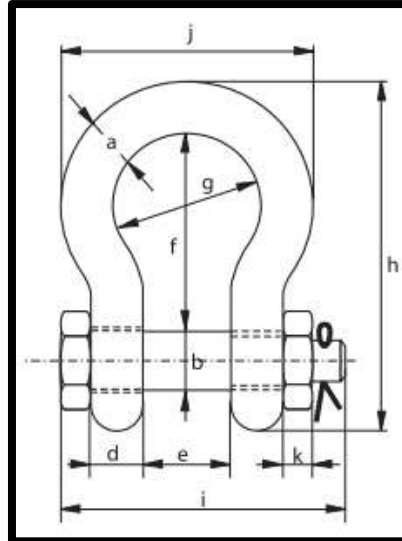
WLL tonne	A mm	B mm	C mm	D mm	E mm	F mm	G mm	H mm	I mm	J mm	K mm	Weight Kg
0.5	7	8	16.5	7	12	29	20	48.5	42	34	4	0.06
0.75	9	10	20	9	13.5	32	22	56	50	40	5	0.11
1	10	11	22.5	10	17	36.5	26	63.5	60	49	8	0.16
1.5	11	13	26.5	11	19	43	29	74	67	51	11	0.22
2	13.5	16	34	13	22	51	32	89	82	58	13	0.42
3.25	16	19	40	16	27	64	43	110	98	75	17	0.74
4.75	19	22	46	19	31	76	51	129	114	89	19	1.18
6.5	22	25	52	22	36	83	58	144	130	102	22	1.77
8.5	25	28	59	25	43	95	68	164	150	118	25	2.58
9.5	28	32	66	28	47	108	75	185	166	131	27	3.66
12	32	35	72	32	51	115	83	201	178	147	30	4.91
13.5	35	38	80	35	57	133	92	227	197	162	33	6.54
17	38	42	88	38	60	146	99	249	202	175	19	8.19
25	45	50	103	45	74	178	126	300	249	216	23	14.22
35	50	57	111	50	83	197	138	331	269	238	26	19.83
42.5	57	65	130	57	95	222	160	377	301	274	29	28.33
55	65	70	145	65	105	260	180	433	330	310	32	39.59
85	75	83	162	73	127	329	190	556	376	355	40	62.00
WLL tonne	A mm	B mm	C mm	D mm	E mm	F mm	G mm	H mm	I mm	J mm	K mm	Weight Kg

We stock Grade 6 G-4161 Green Pin Screw Pin Bow Shackles ranging from 0.33 tonne to 55 tonne. These shackles are manufactured to BSEN13889. They also meet performance requirements of US Fed Spec RR-C-271, Type IVA Class 2, Grade A. These shackles can be used in temperature ranges from -20°C up to 200°C.



WLL tonne	A mm	B mm	C mm	D mm	E mm	F mm	G mm	H mm	I mm	J mm	Weight Kg
0.33	5	6	12	5	9.5	22	16	36	29.5	26	0.02
0.5	7	8	16.5	7	12	29	20	48.5	38	34	0.05
0.75	9	10	20	9	13.5	32	22	56	46.5	40	0.10
1	10	11	22.5	10	17	36.5	26	63.5	54	46	0.14
1.5	11	13	26.5	11	19	43	29	74	59.5	51	0.19
2	13.5	16	34	13	22	51	32	89	73	58	0.36
3.25	16	19	40	16	27	64	43	110	89	75	0.63
4.75	19	22	46	19	31	76	51	129	103	89	1.01
6.5	22	25	52	22	36	83	58	144	119	102	1.5
8.5	25	28	59	25	43	95	68	164	137	118	2.21
9.5	28	32	66	28	47	108	75	185	153	131	3.16
12	32	35	72	32	51	115	83	201	170	147	4.31
13.5	35	38	80	35	57	133	92	227	186	162	5.55
17	38	42	88	38	60	146	99	249	203	175	7.43
25	45	50	103	45	74	178	126	300	243	216	12.84
35	50	57	111	50	83	197	138	331	272	238	18.15
42.5	57	65	130	57	95	222	160	377	310	274	26.29
55	65	70	145	65	105	260	180	433	344	310	37.60
WLL tonne	A mm	B mm	C mm	D mm	E mm	F mm	G mm	H mm	I mm	J mm	Weight Kg

We stock Grade 8 G-5163 Green Pin Safety Bow Shackles ranging from 2 tonne to 85 tonne. These shackles are manufactured to BSEN13889. They also meet performance requirements of US Fed Spec RR-C-271, Type IVA Class 3, Grade B and can be certified for use with wire rope slings in accordance with DNV2.7-1, DNV 2.7-3 and BSEN12079-2. These shackles can be used in temperature ranges from -40°c up to 200°c.

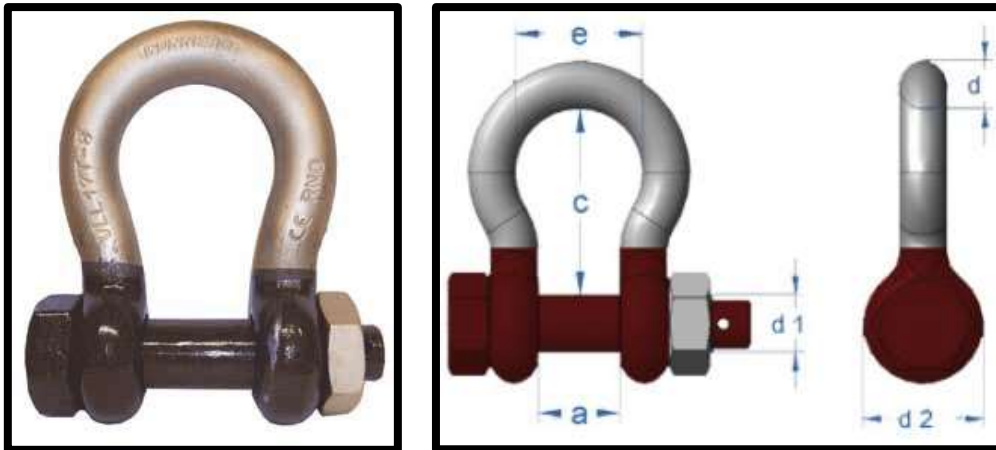


WLL tonne	A mm	B mm	C mm	D mm	E mm	F mm	G mm	H mm	I mm	J mm	K mm	Weight Kg
2	13.5	16	34	13	22	51	32	89	82	58	13	0.42
3.25	16	19	40	16	27	64	43	110	98	75	17	0.74
4.75	19	22	46	19	31	76	51	129	114	89	19	1.18
6.5	22	25	52	22	36	83	58	144	130	102	22	1.77
8.5	25	28	59	25	43	95	68	164	150	118	25	2.58
9.5	28	32	66	28	47	108	75	185	166	131	27	3.66
12	32	35	72	32	51	115	83	201	178	147	30	4.91
13.5	35	38	80	35	57	133	92	227	197	162	33	6.54
17	38	42	88	38	60	146	99	249	202	175	19	8.19
25	45	50	103	45	74	178	126	300	249	216	23	14.22
35	50	57	116	50	83	197	138	334	269	238	26	19.85
42.5	57	65	130	57	95	222	160	377	301	274	29	28.33
55	65	70	145	65	105	260	180	433	330	310	32	39.59
85	75	83	162	73	127	329	190	527	380	340	39	62.00

WLL tonne	A mm	B mm	C mm	D mm	E mm	F mm	G mm	H mm	I mm	J mm	K mm	Weight Kg
-----------	------	------	------	------	------	------	------	------	------	------	------	-----------

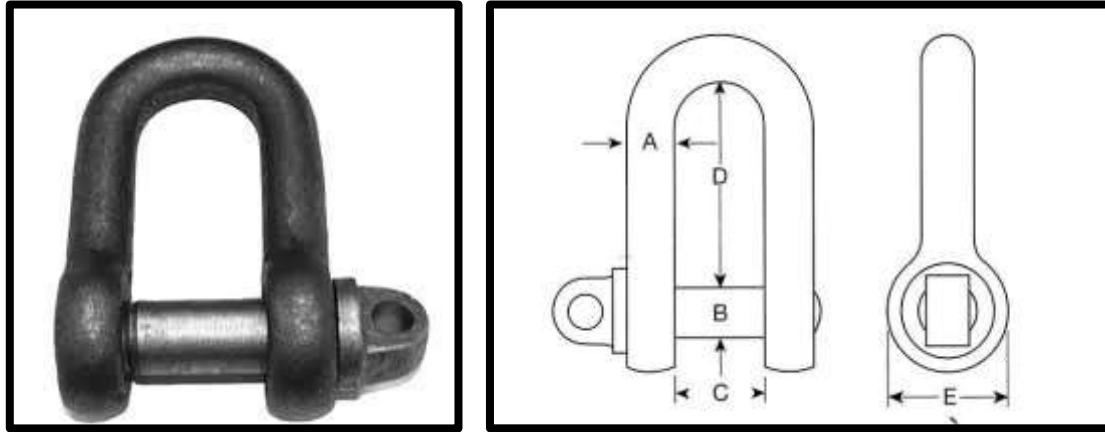
We stock Grade 8 Arctic Safety Bow Shackles ranging from 2 tonne to 85 tonne. These shackles are manufactured to BSEN13889. They also meet performance requirements of US Fed Spec RR-C-271, Type IVA Class 3, Grade A and can be certified for use with wire rope slings in accordance with DNV2.7-1, DNV 2.7-3 and BSEN12079-2.

These shackles can be used in temperature ranges from -40°C up to 200°C.



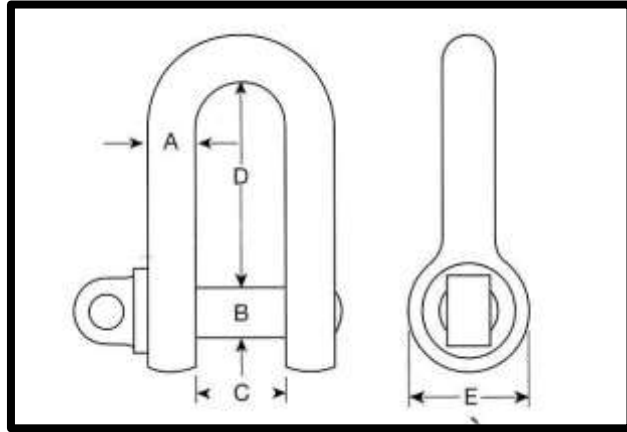
WLL tonne	d mm	d1 mm	a mm	c mm	d2 mm	e mm	Weight Kg
2	13	16	21	47	33	33	0.42
3.25	16	19	27	60	40	42	0.74
4.75	19	22	31	71	47	51	1.18
6.5	22	25	37	84	50	58	1.73
8.5	25	28	43	95	58	68	2.58
9.5	28	32	46	108	64	74	3.66
12	32	35	52	119	72	83	5
13.5	35	38	57	132	74	89	6.05
17	38	42	60	146	84	98	8.12
25	45	50	74	178	105	127	14
35	50	57	83	197	119	138	20
55	65	70	105	255	152	185	41
85	75	83	127	330	164	190	62
WLL tonne	d mm	d1 mm	a mm	c mm	d2 mm	e mm	Weight Kg

We stock self-colour Small Screw Pin Dee Shackles to BS3032. These can also be supplied with a hot dipped galvanised finish on request.



SWL tonne	A mm	B mm	C mm	D mm	E mm	Weight Kg
0.30	6	10	10	22	19	0.06
0.60	10	13	16	36	26	0.15
1.00	13	16	22	48	32	0.33
1.75	16	19	26	57	38	0.61
2.50	19	22	32	70	44	0.93
3.50	22	26	36	83	51	1.80
4.50	26	28	38	92	57	2.15
5.50	28	32	44	105	64	3.02
7.00	32	36	48	114	70	4.20
8.00	36	38	54	127	76	5.34
10.75	38	44	60	140	89	8.36
13.00	42	48	64	149	95	9.35
14.75	44	51	70	162	102	12.39
16.75	48	54	73	172	108	15.30
19.00	51	57	76	184	114	18.40
SWL tonne	A mm	B mm	C mm	D mm	E mm	Weight Kg

We stock self-colour Large Screw Pin Dee Shackles to BS3032. These can also be supplied with a hot dipped galvanised finish on request.



SWL tonne	A mm	B mm	C mm	D mm	E mm	Weight Kg
0.25	6	10	13	26	19	0.06
0.50	10	13	19	38	26	0.16
0.75	13	16	28	54	32	0.35
1.50	16	19	32	64	38	0.63
2.00	19	22	38	62	44	1.00
3.00	22	26	44	83	51	1.54
3.75	26	28	51	95	57	2.21
5.00	28	32	54	105	64	3.11
6.00	32	36	60	114	70	4.33
7.00	36	38	67	127	76	5.33
9.50	38	44	70	137	89	8.46
11.25	42	48	76	149	95	10.48
13.00	44	51	83	156	102	12.66
14.25	48	54	84	178	107	15.34
16.25	51	57	98	188	114	18.50
18.00	54	60	105	197	121	23.80
20.00	57	64	107	210	127	28.60
SWL tonne	A mm	B mm	C mm	D mm	E mm	Weight Kg

Shackles are one of the most commonly used items of lifting equipment, because of their wide range of applications we have detailed below some of the more common varieties. This is still a small selection of the shackles available on the market. If you require something not listed in this catalogue please contact our sales team.

Crosby

We are an Authorized Stocking Distributor of all Crosby Products in the United Kingdom



G2130 - Bolt Type Anchor Shackle
Crosby's standard shackle certified to BSEN13889



G2130CT - "Cold-Tuff" Bolt Type Anchor Shackle
Certified to DNV2.7-1 down to -40°C



G210 - Screw Pin Chain Shackle
Certified to BSEN13889

Green Pin

Including the standard Green Pin shackles, a number of other styles are available



Green Pin Dee Shackles
G-4153 Available with Safety Bolt
G-4151 Available with Screw Pin



Heavy Duty Green Pin
G-6036 Available from 120tonne up to 1500 tonne!



Super Green Pin
G-5263 These shackles are manufactured with a high working load limit and a smaller overall size

Stainless Steel

Available in High Tensile for Lifting Applications and Commercial ranges.



Dee with Safety Bolt High Tensile Stainless Steel 316L Lifting Shackles to EN10088.
Certified Polished Stainless Steel for Lifting Applications



Bow with Safety Bolt High Tensile Stainless Steel 316L Lifting Shackles to EN10088.
Certified Polished Stainless Steel for Lifting Applications



Commercial Stainless Steel.
Only to be used when certification is not required and never to be used for Lifting Applications

Commercial and Split Pins

These Shackles should not be used for Lifting Applications.



Galvanised Screw Pin Dee Shackle



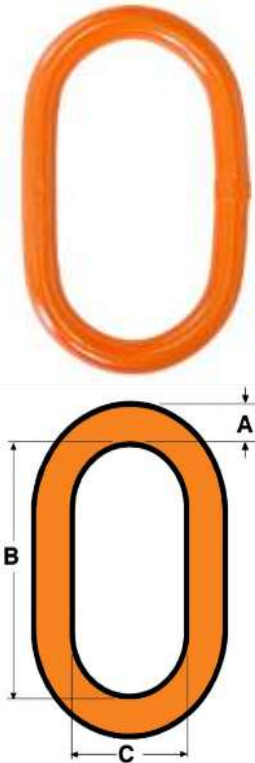
Galvanised Screw Pin Bow Shackle



Split Pins available to suit all ranges of our Shackles

We stock a wide range of William Hackett Master Links. These are generally used to form part of a wire rope sling but can also be supplied and certified as individual lifting items. These are certified and manufactured to BSEN 1677-4 and meet the requirements of DNV.

These can be used in temperature ranges of -40°C to 200°C.

MASTER LINKS	PART CODE	WLL (t)	DIMENSIONS MM		
			A	B	C
	HA16ML	4.1	16	150	75
	HA22MS	8.83	22	162	90
	HA22ML	5.8	22	270	140
	HA25ML	8.83	25	270	140
	HA28MS	14.5	28	200	110
	HA28ML	11.8	28	270	140
	HA32ML	17.1	32	270	140
	HA36ML	23	36	270	140
	HA40ML	28.1	40	280	155
	HA45ML	38.3	45	320	175
	HA50ML	45	50	350	195
	HA60ML	65	60	430	230
	HA70ML	85	70	480	260
HA90ML	150	90	500	300	

We can also supply Master Links and Quad Assemblies from any of the listed below suppliers. Other manufactures of Master Links and Quad assemblies are available on request.

Crosby

We are an Authorized Stocking Distributor of all Crosby Products in the United Kingdom



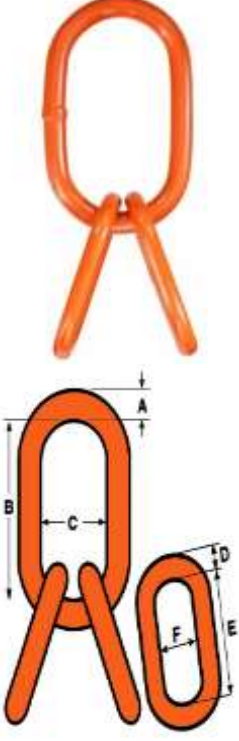
A-344 Welded Master Links with Engineered Flat.
Meets the requirements of DNV 2.7-1

Fram



Master Links with Engineered Flat.
Meets the requirements of BSEN1677-4

We stock a wide range of William Hackett Quad Assemblies. These are generally used to form part of a wire rope sling but can also be supplied and certified as individual lifting items. These are certified and manufactured to BSEN 1677-4 and meet the requirements of DNV. These can be used in temperature ranges of -40°C to 200°C.

QUAD ASSEMBLIES	PART CODE	WLL (t)	DIMENSIONS MM					
			A	B	C	D	E	F
	HA16QA	4.1	16	150	75	13	90	50
	HA22QA	8.83	22	162	90	20	140	70
	HA23QA	5.8	22	270	140	16	150	75
	HA25QA	8.83	25	270	140	20	140	70
	HA26QA	11.8	28	270	140	20	140	70
	HA28QA	14.5	28	200	110	22	140	70
	HA32QA	17.1	32	270	140	26	185	900
	HA36QA	23	36	270	140	28	190	100
	HA40QA	28.1	40	280	155	32	200	110
	HA45QA	38.3	45	320	175	36	225	125
	HA50QA	45	50	350	195	40	260	130
	HA60QA	65	60	430	230	50	350	195
HA70QA	85	70	480	260	60	410	220	
HA90QA	150	90	500	300	70	400	200	

We can also supply Master Links and Quad Assemblies from any of the listed below suppliers. Other manufactures of Master Links and Quad assemblies are available on request.

Crosby

We are an Authorized Stocking Distributor of all Crosby Products in the United Kingdom



A-347 Welded Quad Assembly.
Meets the requirements of DNV 2.7-1

Fram



Master Links with Engineered Flat.
Meets the requirements of BSEN1677-4

We stock large quantities of grade 8 (Black Finish) chain including 7mm, 10mm, 13mm and 16mm and a large selection of various component parts for terminal fittings. We can assemble chain slings in accordance with BSEN818-4 to any specifications required. These can be assembled as single leg, two, three and four leg slings. Our chain and chain component parts are also available in a grade 10 (Blue Finish) alternative on request offering a higher working load limit at the same dimensional size as its grade 8 counterpart. We can also supply DNV welded chain slings approved to DNV 2.7-1 for offshore containers in place of wire rope slings on request.



Chain Size mm	Grade	Single Leg (t)	Two Leg 0-45° (t)	Three and Four Leg 0-45° (t)
7	8	1.5	2.1	3.1
8	8	2.0	2.8	4.2
10	8	3.15	4.25	6.7
13	8	5.3	7.5	11.2
16	8	8.0	11.2	17.0
20	8	12.5	17.0	26.5
22	8	15.0	21.2	31.5
26	8	21.2	30.0	45.0
32	8	31.5	45.0	67.0
Chain Size mm	Grade	Single Leg (t)	Two Leg 0-45° (t)	Three and Four Leg 0-45° (t)
6	10	1.4	2.0	2.9
8	10	2.5	3.5	5.3
10	10	4.0	5.6	8.4
13	10	6.7	9.5	14.0
16	10	10.0	14.0	21.0
20	10	16.0	22.4	33.6
22	10	19.0	26.5	40.0
Chain Size mm	Grade	Single Leg (t)	Two Leg 0-45° (t)	Three and Four Leg 0-45° (t)

Our assembled chain slings can be fitted with any of the below required terminal fittings. These are available in Grade 8 and Grade 10 to suit the lifting chain used. Additional fittings are available, if you need something not mentioned below please contact our sales team.



Clevis Type Self Locking Hook



Eye Type Barrel Hook



Clevis Type Sling Hook with Safety Catch



Grip Safe Swivel Self Locking Hook



Component Connector



Clevis Type Clutch



Clevis Type Shackle



Eye Type Sling Hook



Clevis Type Reeveable Link



Clevis Type Grab Hook



Clevis Type 'C' Hook



Master Link



Eye Type Grab Hook



Eye Type Foundry Hook



Swivel Sling Hook with Ball Bearing



Sub Assembly

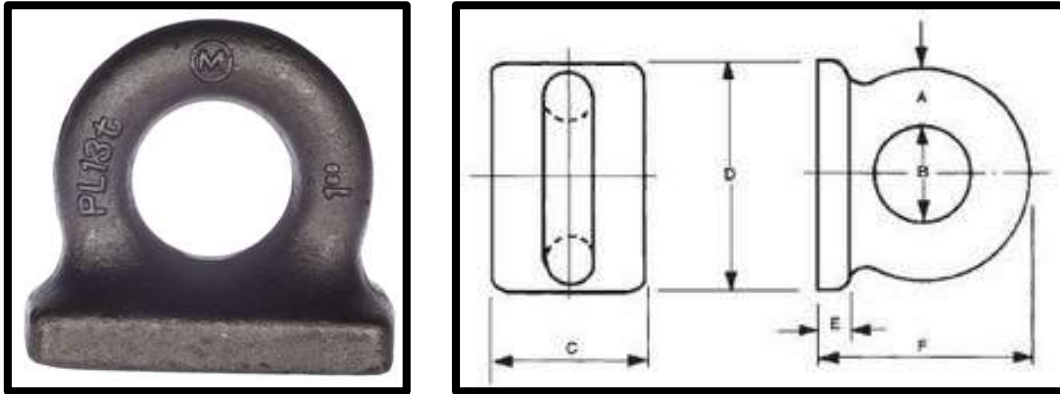


Clevis Type Foundry Hook



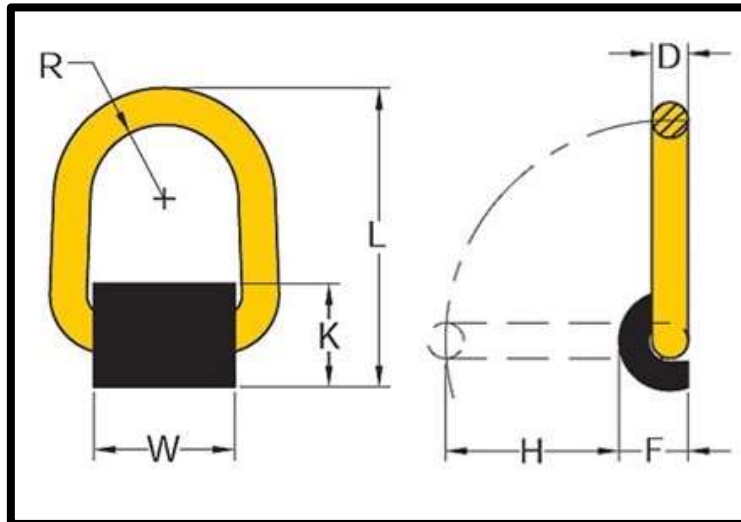
Eye Type Sling Hook

We stock large quantities of high tensile deck plates. These are self-coloured based upon the admiralty pattern. These can be welded to structures to be used as lifting points or as tie down points. The proof load stated in the table should only be used as a guide as the end working load limit will depend on the welding procedure used.



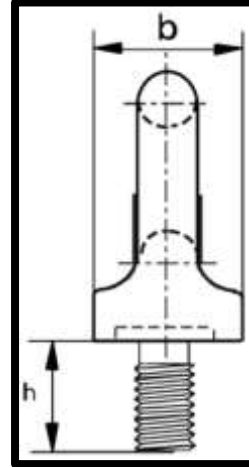
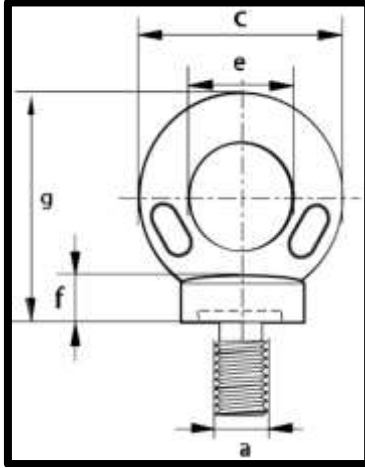
Proof Test tonne Guide Only	A mm	B mm	C mm	D mm	E mm	F mm	Weight Kg
2	10	20	25	45	9	38	0.14
3.5	12.5	25	35	60	8	50	0.31
5.5	16	32	45	70	10	64	0.45
7.5	19	38	50	85	12	76	0.79
9.6	22	44	61	102	12	88	1.36
13	25	50	70	115	16	100	1.82
15.75	28	56	76	130	18	114	2.95
19.5	32	64	85	145	19	128	3.86
29	38	76	100	170	22	152	6.58
39	44	89	121	200	27	178	18.0
50	51	102	137	229	30	203	25.0
Proof Test tonne Guide Only	A mm	B mm	C mm	D mm	E mm	F mm	Weight Kg

We can supply weld on lifting/lashing points from 1tonne WLL to 20tonne WLL. These are designed to be welded to a structure to be used as a permanent lashing or lifting point. They are also ideal for deck lashing points. The sizes noted in the table are for the points pictured left, other manufacturers dimensions may vary slightly.



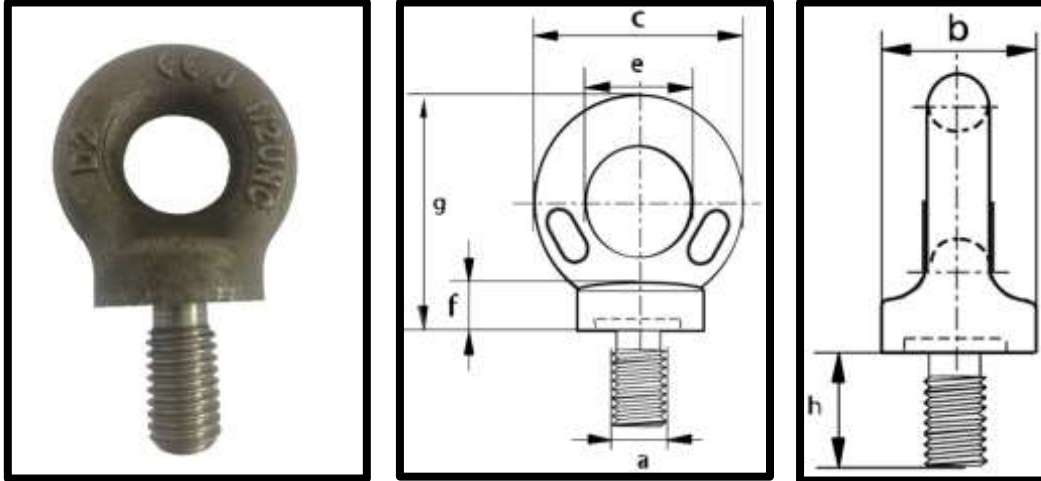
Working Load Limit	W mm	D mm	F mm	K mm	H mm	R mm	L mm	Weight Kg
1.0	50	14	27	38	55	24	105	0.5
3.0	58	17	34	48	60	29	112	0.8
5.0	64	22	43	61	74	33	154	1.8
8.0	61	26	54	73	82	34	169	2.6
10.0	75	20	54	73	103	41	191	3.0
20.0	91	25	70	93	123	50	234	6.5
Working Load Limit	W mm	D mm	F mm	K mm	H mm	R mm	L mm	Weight Kg

We stock a wide range of metric collared eyebolts. These are available in all thread diameters in the table below. All of the below eyebolts are also available with a longer thread known as longshank collared eyebolts, these come with a thread length of 178mm for all thread diameters. Other thread profiles are available please contact our sales team.



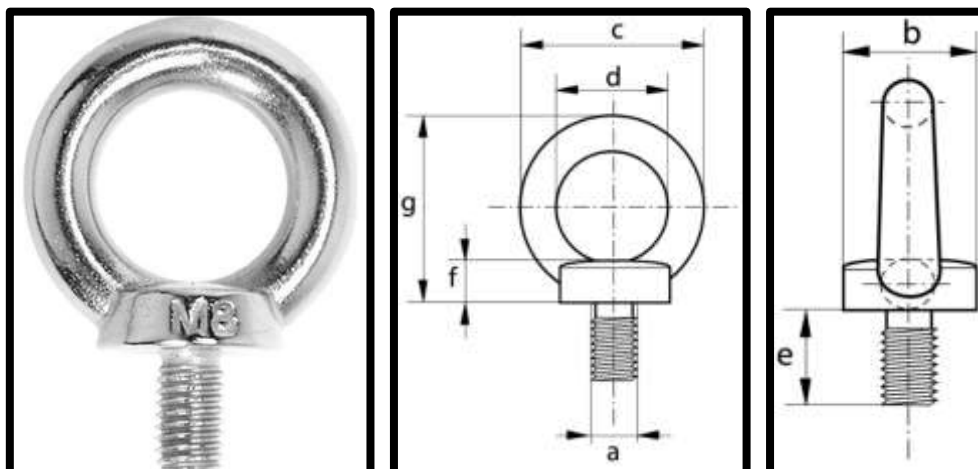
Vertical at 0° SWL tonne	A mm	B mm	C mm	E mm	F mm	G mm	H mm	Weight Kg
0.10	6	22	33	15	7	36	18	0.06
0.15	8	22	33	15	7	36	18	0.06
0.25	10	22	33	15	7	36	18	0.06
0.40	12	22	33	15	7	36	18	0.06
0.50	14	29	44	20	10	48	23	0.15
0.80	16	29	44	20	10	48	23	0.15
1.00	18	36	52	24	12	58	28	0.27
1.60	20	40	59	27	14	65	32	0.38
1.60	22	45	64	30	14	73	35	0.54
2.50	24	52	77	35	17	84	40	0.85
2.50	27	58	85	39	20	94	46	1.13
4.00	30	65	96	44	22	106	51	1.62
4.00	33	72	106	48	24	117	56	2.37
6.30	36	81	118	54	27	131	63	3.12
6.30	39	86	123	57	29	137	67	3.81
8.00	42	101	148	68	34	164	79	6.27
8.00	45	101	148	68	34	164	79	6.45
10.00	48	101	148	68	34	164	79	6.51
12.50	52	115	168	76	38	186	89	9.58
16.00	56	128	188	86	43	208	100	12.99
20.00	64	144	212	96	48	234	112	18.20
Vertical at 0° SWL tonne	A mm	B mm	C mm	E mm	F mm	G mm	H mm	Weight Kg

We stock a wide range of UNC collared eyebolts. These are available in all thread diameters in the table below. All of the below eyebolts are also available with a longer thread known as longshank collared eyebolts, these come with a thread length of 178mm for all thread diameters. Other thread profiles are available please contact our sales team.



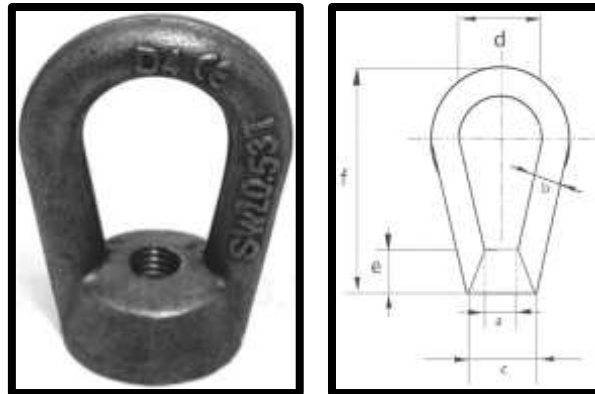
Vertical at 0° SWL tonne	A inch	B mm	C mm	E mm	F mm	G mm	H mm	Weight Kg
0.10	1/4	22	33	15	7	36	18	0.06
0.15	5/16	22	33	15	7	36	18	0.06
0.25	3/8	22	33	15	7	36	18	0.06
0.50	1/2	29	44	20	10	48	23	0.15
0.90	5/8	36	52	24	12	58	28	0.27
1.40	3/4	45	66	30	14	73	35	0.54
2.00	7/8	52	77	35	17	84	40	0.85
2.75	1	58	85	39	20	94	46	1.13
3.50	1.1/8	65	96	44	22	106	51	1.62
4.50	1.1/4	72	106	48	24	117	56	2.37
6.50	1.1/2	81	118	54	27	131	63	3.12
9.00	1.3/4	101	148	68	34	164	79	6.27
12.00	2	115	168	76	38	186	89	9.58
Vertical at 0° SWL tonne	A inch	B mm	C mm	E mm	F mm	G mm	H mm	Weight Kg

We stock DIN580 Stainless Steel Eyebolts. These are certified stainless steel lifting eyebolts, ideal for lifting stainless steel equipment when you want to avoid cross contamination of different steel types.



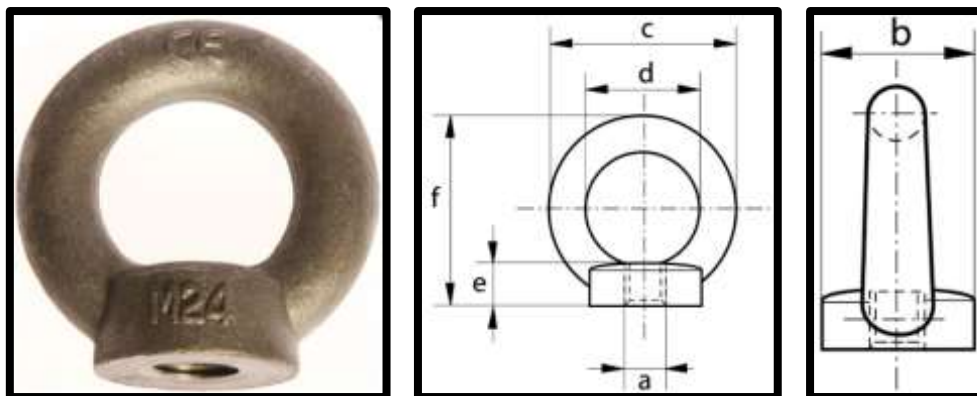
Vertical at 0° SWL Kg	A mm	B mm	C mm	D mm	E mm	F mm	G mm	Weight Kg
140	8	20	36	20	15	6	36	0.08
230	10	25	45	25	18	8	45	0.11
340	12	30	54	30	22	10	53	0.18
700	16	35	63	35	28	12	62	0.28
1200	20	40	72	40	30	12	71	0.45
1800	24	50	90	50	38	16	90	0.87
3600	30	65	108	60	45	20	109	1.60
Vertical at 0° SWL Kg	A mm	B mm	C mm	D mm	E mm	F mm	G mm	Weight Kg

We can supply Bow Nuts with metric and BSW (British Standard Whitworth) Threads.



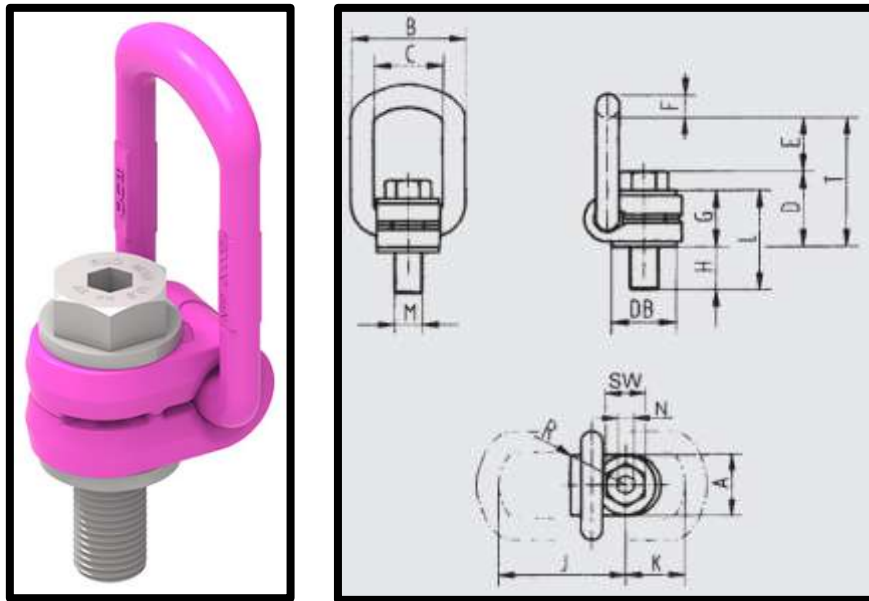
Vertical at 0° SWL tonne	A mm	B mm	C mm	D mm	E mm	F mm	Weight Kg
0.23	8	10	32	25	16	64	0.15
0.36	10	10	32	25	16	64	0.15
0.53	12	12	38	30	17	73	0.27
1.01	16	12	38	30	17	73	0.29
1.58	20	14	45	40	25	102	0.50
2.28	24	17	50	50	29	124	0.90
3.65	30	26	70	75	29	149	2.20
5.34	36	26	70	75	29	149	2.20

We can supply Eye Nuts with metric and BSW (British Standard Whitworth) Threads.



Vertical at 0° SWL tonne	A mm	B mm	C mm	D mm	E mm	F mm	Weight Kg
0.30	10	13	29	44	22	78	0.25
0.50	12	13	29	44	22	78	0.26
0.80	16	13	29	44	22	78	0.27
1.20	20	16	39	49	26	84	0.45
2.20	24	19	44	52	38	111	0.79

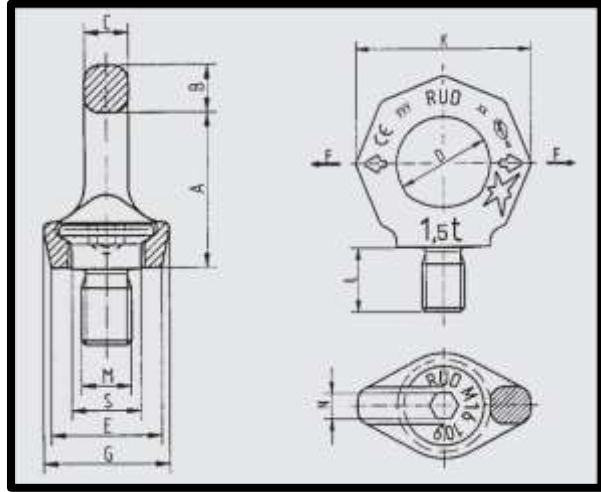
VLBG Load Rings can rotate 360° adjustable in the direction of the pull. These can be used from -40°C up to +200°C with no reduction in the Working Load Limit. All other RUD products are available on request.



Type	WLL (t)	A	B	C	D	E	F	G	H	J	K	L	M	N	SW	R	T	DB
M8	0.3	30	54	34	35	40	10	29	11	75	45	40	8	5	13	32	75	24
M10	0.63	30	54	34	36	39	10	29	16	75	45	45	10	6	17	32	75	24
M12	1	32	54	34	37	38	10	29	21	75	45	50	12	8	19	32	75	26
M14	1.2	33	56	36	46	39	13.5	36	34	86	47	70	14	10	24	38	85	30
M16	1.5	33	56	36	46	39	13.5	36	24	86	47	60	16	10	24	38	85	30
M18	2.0	50	82	54	55	55	16.5	43	47	113	64	90	18	12	30	48	110	45
M20	2.5	50	82	54	55	55	16.5	43	32	113	64	75	20	12	30	48	110	45
M24	4	50	82	54	58	67	18	43	37	130	78	80	24	14	36	48	125	45
M27	4	60	103	65	78	69	22.5	61	39	151	80	100	27	-	41	67	147	60
M30	5	60	103	65	80	67	22.5	61	49	151	80	110	30	17	46	67	147	60
M36	8	77	122	82	100	97	26.5	77	63	205	110	140	36	22	55	87	197	70

Type	WLL (t)	A	B	C	D	E	F	G	H	J	K	L	M	N	SW	R	T	DB
1/2" – 13UNC	1	32	54	34	38	37	10	29	22	75	45	50	1/2"	-	3/4"	32	75	26
5/8" – 11UNC	1.5	33	56	36	46	38	13.5	36	24	87	47	60	5/8"	-	1/5/16"	38	85	30
3/4" – 10UNC	2.5	50	82	54	56	54	16.5	43	28	113	64	71	3/4"	-	1/1/8"	48	110	45
7/8" – 9UNC	2.5	50	82	54	58	52	16.5	43	27	113	64	70	7/8"	-	1/5/16"	48	110	45
1" – 8UNC	4	50	82	54	61	64	16.5	43	41	130	78	84	1"	-	1/1/2"	48	125	45
1 1/4" – 7UNC	5	60	103	65	80	64	22.5	61	41	151	80	102	1/1/4"	-	1/7/8"	67	147	60

VRS Starpoint can rotate 360° adjustable in the direction of the pull. These can be used from -40°C up to +200°C with no reduction in the Working Load Limit.
All other RUD products are available on request.



Type	WLL (t)	A	B	C	D	E	G	K	L	M	N	S
M6	0.1	27	9	7	20	23	28	37	9	6	6	13
M8	0.3	34	11	8.5	25	25	32	47	12	8	6	16
M10	0.4	34	11	8.5	25	25	32	47	15	10	6	16
M12	0.75	42	13	10	30	30	34	56	18	12	8	20
M16	1.5	49	15	14	35	35	40	65	24	16	10	23.5
M20	2.3	57	17	16	40	42	50	75	30	20	12	29
M24	3.2	70	21	19	48	50	60	90	36	24	14	35
M30	4.5	86	26	24	60	60	75	112	45	30	17	44
M36	7	103	32	29	72	75	90	135	54	36	22	53
M42	9	120	38	34	82	85	105	158	63	42	24	61.5
M48	12	137	43	38	94	100	120	180	72	48	27	70.5

Type	WLL (t)	A	B	C	D	E	G	K	L	M	N	S
1/4" – 20UNC	0.1	27.5	9	7	20	23	27	37	9	1/4"	7/32"	13
5/16" – 18UNC	0.3	34	11	8.5	25	25	28	47	12	5/16"	1/4"	14
3/8" – 16UNC	0.4	34	11	8.5	25	25	28	47	15	3/8"	1/4"	15
7/16" – 14UNC	0.4	34	11	8.5	25	25	28	47	15	3/8"	1/4"	15
1/2" – 13UNC	0.75	42	13	10	30	30	34	56	18	1/2"	5/16"	18
5/8" – 11UNC	1.5	49	15	14	35	35	40	65	24	5/8"	3/8"	22
3/4" – 10UNC	2.3	57	17	16	40	40	50	75	30	3/4"	1/2"	27.5
7/8" – 9UNC	2.3	57	17	16	40	40	50	75	32	7/8"	1/2"	27.5
1" – 8UNC	3.2	69	21	19	48	48	60	90	36	1"	9/16"	33
1 1/4" – 7UNC	4.5	86	26	24	60	60	75	112	45	1 1/4"	5/8"	41.5
1 1/2" – 6UNC	7	103	32	29	72	75	90	135	54	1 1/2"	7/8"	49.5
1 3/4" – 5UNC	9	120	38	34	82	85	105	158	63	1 3/4"	1"	58
2" – 4.5UNC	12	137	43	38	94	100	120	180	72	2"	1 1/8"	66

We can supply Chain Blocks and Pull Lifts from a wide range of suppliers including Tractel, George Taylor, William Hackett, Tiger Lifting, Yale and many more. These can range from having a working load limit of 250kg up to 20000kg with any height of lift required.

We also have a range of Chain Blocks and Pull Lifts available for hire.



We can supply Pulling Machines from a wide range of suppliers including Tractel, George Taylor, Yale and many more. These can range from having a working load limit of 800kg, 1600kg or 3200kg. These can be supplied complete with an operating handle and the appropriate sized wire rope for the machine. These are also available for hire.



We can supply Beam Clamps, Plate Clamps and Trolleys from a wide range of suppliers including Tractel, George Taylor, William Hackett, Camlock and many more. These clamps and trolleys come in a variety of designs depending on the lifting application required. Please contact our sales team for more detailed information on any of the clamps listed below. We have a range of beam clamps and beam trolleys available for hire.

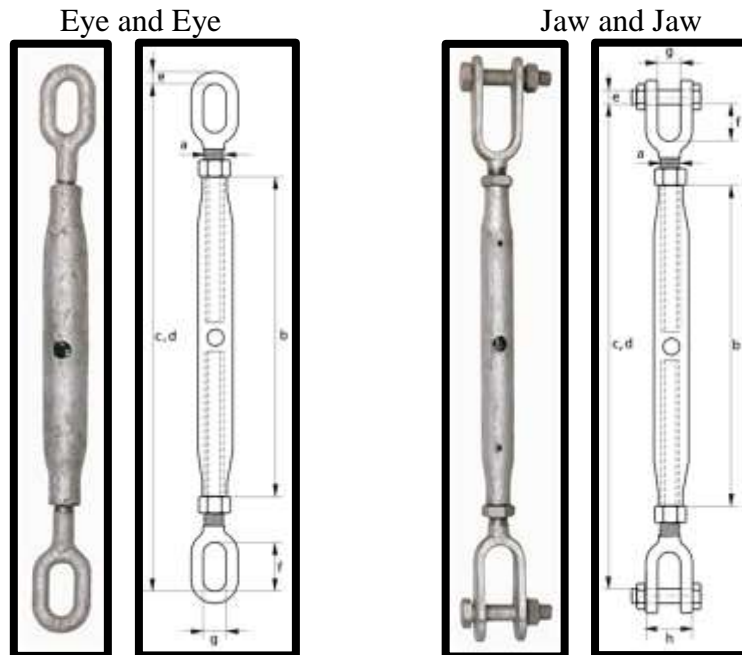


We can supply Wire Rope Sockets for a wide range of wire sizes. We can also supply the Wirelock resin kits used for socketing the wire rope in to the socket. We are also able to socket wire ropes at our workshop or anywhere on site.



Wirelock kits are available in 100cc, 250cc, 500cc, 1000cc and 2000cc. If purchasing these kits separately please contact our sales team for advice on the amount required depending on the diameter of the wire rope and the socket size.

We can supply Closed body rigging screws with a thread diameter from 6mm up to 48mm. These are also available with open bodies and in stainless steel.



A	B	C	D	E	F	G	WLL Tonnes
6 *	100	165	245	5.5	11	11	0.20
8 *	108	178	261	6	12	12	0.32
10 *	125	210	308	8.5	13	13	0.50
12	195	325	484	11	30	15	0.70
16	230	380	564	12	40	20	1.20
20	270	455	673	16	50	24	1.50
22	295	495	736	16	50	24	2.20
24	325	545	806	19	56	28	3.20
33	370	665	961	29	70	35	4.80
39	400	725	1032	34	80	40	6.00
45 *	407	840	1200	30	85	40	8.50
48 *	407	890	1250	37	92	44	10.00

EYE AND EYE TYPE - PLEASE NOTE: SIZES MARKED WITH AN * HAVE ROUND EYES

A	B	C	D	E	F	G	H	I	WLL Tonnes
6 *	100	175	255	5	19	7	20	13	0.20
8 *	108	199	282	6	25	9	24	14	0.32
10 *	125	222	320	8	26	10.5	28	19	0.50
12	195	320	479	10	32	13	34	22	0.70
16	230	388	572	12	39	18	42	28	1.20
20	270	454	672	16	46	20	51	33	1.50
22	295	490	730	20	55	25	55	38	2.20
24	325	558	819	22	63	30	70	46	3.20
33	370	681	977	30	85	38	82	60	4.80
39	400	710	1017	33	86	45	85	76	6.00
45 *	407	810	1170	39	86	48	96	80	8.50
48 *	407	855	1215	45	98	50	101	92	10.00

JAW AND JAW TYPE - PLEASE NOTE: SIZES MARKED WITH AN * HAVE ROUND EYES

We can supply webbing ratchet assemblies with a variety of end fittings and chain lashing systems using ratchet load binders.



Webbing ratchet assemblies can come in a variety of widths and minimum breaking strains. Examples pictured above are (from left to right) 25mm wide MBS 800kg, 35mm wide MBS 3000kg, 50mm wide MBS 5000kg, 75mm wide MBS 10000kg. These all come in standard lengths of 4m, 6m, 8m, 10m or can be made to almost any length required.

These are manufactured in accordance with EN12195-2.



Chain ratchet systems can be made using a combination of these components. These are available in 8mm LC 40kN, 10mm LC 63kN, 13mm LC 100kN, 16mm LC 160kN. These can be supplied with almost any length of Grade 80 chain required.



We can supply Magnaflux Non-destructive testing equipment for Magnetic Particle Inspection, Dye Penetrant Inspection and Visual Weld Inspection.



Castrol Strips



UV Light



Field Indicator



Light Meter



Light Meter



AC Yoke



Centrifuge Tube



Radius Gauge



TWI Weld Gauge



Telescopic Mirror



7HF – Black Magnetic Ink



WCP-2 White Contrast Paint



14HF Fluorescent Ink



SKD-S2 Developer



SKL-WP2 Red Penetrant



SKC-S Cleaner / Remover

We can supply Height Safety equipment from a wide range of suppliers including Tractel, Kratos, Globestock, IKAR and many more. These are also available for hire.

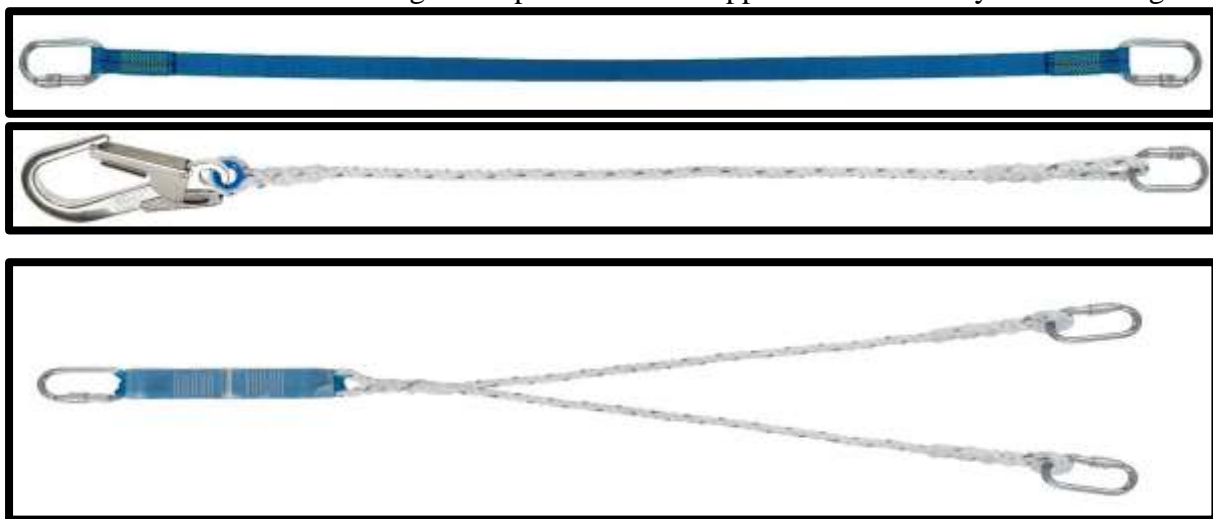
Safety Harnesses and Safety Reels

Safety harnesses are manufactured in accordance with EN361 and are fully adjustable. Safety Reels are manufactured in accordance with EN360 and are available in webbing, galvanised or stainless steel wire rope. Retrievable options are also available on request.



Restraint and Positioning Lanyards

These are available in webbing and rope and can be supplied with a variety of end fittings.



End Fittings

Many options are available in aluminium or steel in accordance with EN362. These can be purchased separately or as part of a restraint or positioning lanyard assembly.



We offer a wide range of miscellaneous items. These items are not certified for use in lifting applications but can be used for a number of other applications. The below products come in a variety of sizes. Most products are available in galvanised steel and stainless steel materials.
The majority of these products are available from stock.





Supply and Inspection of Lifting Equipment

Non-Destructive Testing Services

Quality System Certified to ISO 9001:2015

Full Members of the LEEA

DNV Type Approval for Sling Manufacture

Members of the British Standards Institute

Independent Lifting Services Limited
Units 3 & 4 James Court, Faraday Road
Gapton Hall Industrial Estate
Great Yarmouth, Norfolk, NR31 0NF
Tel: 01493 650952
E-Mail: sales@independentlifting.com
Website: www.independentlifting.com

