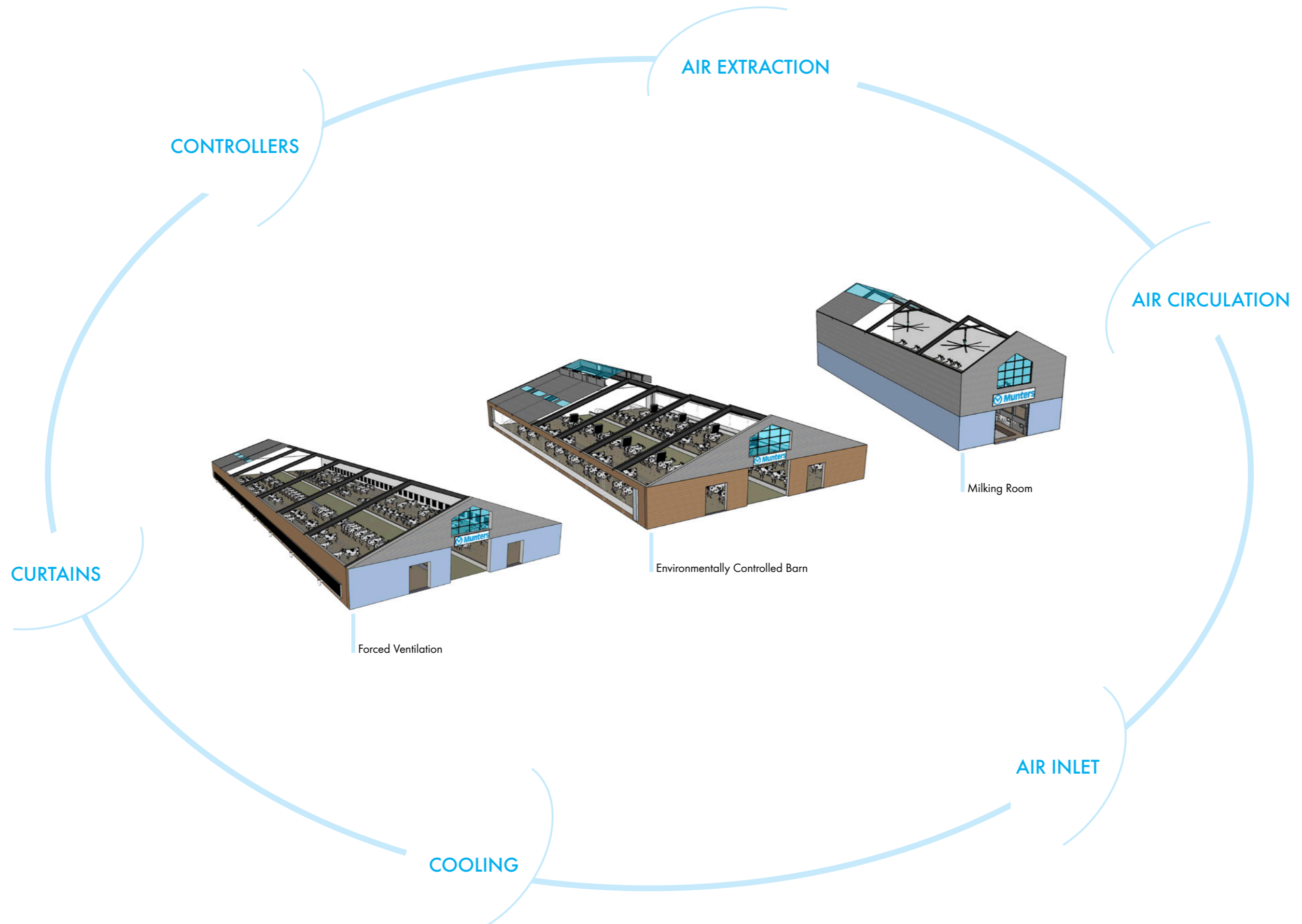


Product catalogue

Solutions for the Dairy segment

Dairy farms	p. 3
Features	p. 6
Air extraction	p. 8
Air circulation	p. 12
Air inlet	p. 16
Cooling	p. 18
Curtains	p. 22
Controllers	p. 25







HIGH EFFICIENCY



In the high end of Munters Agriculture products there is more and more interest for high efficiency products: the European community has introduced a regulation which determines the minimum acceptable efficiency rate for exhaust fans, moreover customers are more sensitive to running cost of the fans and to the quantity of energy necessary for moving a certain amount of air. Munters response to this demand of high efficiency products is represented by the new line of EDHE fans, designed for being fully compliant with European Ecodesign directives, by the cone fans EC50 and EC52, offering an improvement in the range of 10 - 15% of the performances thanks to introduction of discharge cone.

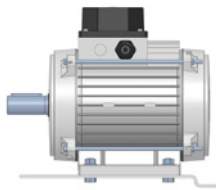
Recently Munters has designed and patented a unique EC motor, designed for working in conjunction with cone fan, able to offer an unbelievable level of efficiency and airflow.

MUNTERS PROTECT



In agriculture, corrosion is usually caused by a combination of many factors such as pH, high humidity levels, frequent contact with water, aggressive chemicals as found in manure or disinfectants, bacterial growth; and the list goes on. The industry is also continuously evolving and that might have surprising side effects: new agricultural chemicals or feed additives might do wonders for animal or plant health, but also enhance corrosion on metal products. For offering a consistent remedy to corrosion troubles Munters switched to a new material, called Munters Protect, which offers extremely high protection against corrosion. It consists of a coating made of Zinc, Aluminum and Magnesium and it delivers the best corrosion resistance performance, up to 10 times better than galvanised steel.

MOTORS



Munters is able to offer a wide range of motor power, depending on the application and the fan size. The smallest fan Munters produces, the 18" air recirculator EDC18 is equipped by a 0.33 Hp motor. The minimum ventilation fans and air recirculators can be equipped by a 0.5 or 0.75 Hp motor. The exhaust fan used for tunnel ventilation can be equipped by 1.0 or 1.5 Hp motor. For the recent production of big diameter fans, like EM52 and EC52, Munters has fitted them with a powerful 2.0 Hp motor. Most of the models of fans allows speed control obtained either by inverter (VFD) or autotransformer. This huge flexibility in the offering has been developed for being able to cover any demand in terms of airflow which might rise from our customers.

MUNTERS DRIVE



Ventilation inefficiencies are mainly related to 3 major causes: the types of motors used as the design of AC motor has physical limitations; the belt drive systems as the friction on the transmission components energy causes an energy loss and a high level of maintenance; the fixed single revolution speed and consequent fixed capacity, which prevents energy savings when ventilation demand is low. Munters Drive avoids these limitations through 3 innovations: a new motor architecture which shows a more efficient performance; the direct drive which makes the motor turning at the same revolution speed as the optimum propeller speed, eliminating friction losses and the need of maintenance; and the variable speed which reduces the motor speed and fan capacity when ventilation demand is low, generating significant energy savings. By combining the energy efficiency benefits that a Munters Drive offers over a conventional fan, users have been able to reduce annual ventilation costs by up to 40% and additionally saved a similar amount in maintenance cost reduction.

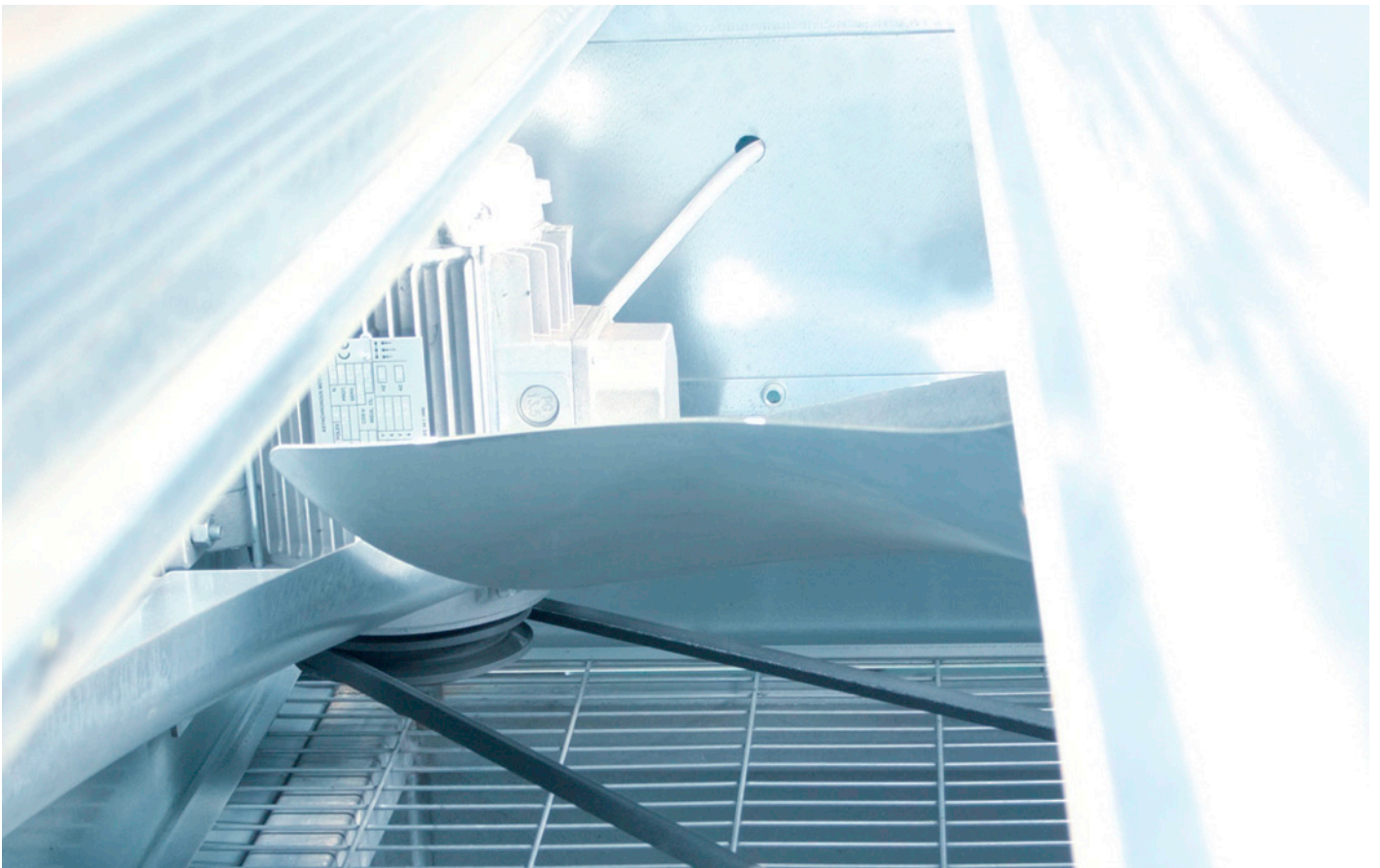
LOADING VOLUMES



Munters has developed an optimized loading displacement for combined loads on 20ft, 40ft and 40ft high cube containers and standard trailers*, which allows to balance volume and weight for delivery of complete system of fans, pad, accessories and heaters. Fans can be delivered assembled, in partially assembled form and fully disassembled depending on the number of products involved. The cooling pad and other accessories can be stored as well inside the container/trailer in order to completely fill the empty space fore and optimize the transport costs. Therefore, all the loading volumes shown in the catalogue are just a few of the many loading options available. Assembly manuals are provided for easy mounting of the received products.

* 13.60x2.40x2.60m

AIR EXTRACTION



EUROEMME® EC52



- Family member of the time proven Euroemme® fan range
- High airflow and high efficiency
- Compact transportation (discharge cone made of 4 cone sectors)
- Special cone design for optimal use of installation space
- Patent pending shutter opening device
- Four blade propeller for reduced vibrations
- Optional belt tensioner
- Optional 4 shaped cone sectors



PERFORMANCES

Motor		1.0Hp	2.0Hp
Airflow at 0 Pa	m ³ /h [cfm]	42,200 [24,900]	49,500 [29,100]
Airflow at 25 Pa	m ³ /h [cfm]	35,100 [20,700]	44,700 [26,300]
Airflow at 50 Pa	m ³ /h [cfm]	26,200 [15,400]	36,400 [21,400]
Specific performance at 0 Pa	m ³ /h/W [cfm/W]	43.7 [25.7]	32.7 [19.2]

* All values refer to 3 phases 50Hz single speed motors.
Note: airflow data are measured at standard conditions (20°C, 1,013hPa)

LOADING VOLUMES

		ASSEMBLED	DISASSEMBLED
Container 20 ft	pcs.	14	100
Container 40 ft	pcs.	30	220
Container 40 ft HC	pcs.	30	220
Trailer 13.60x2.40x2.60 m	pcs.	36	250

EUROEMME® EM52



- Family member of the time proven Euroemme® fan range
- Fan built with outstanding strength for assuring high airflow at static pressure of up to 100 Pa.
- Fan housing and Venturi made of strong Munters Protect coated sheet-steel
- Redesigned 52" propeller suited for high static pressure environments
- Shutters are made of pressed Munters Protect coated steel in order to ensure highest strength
- Patented centrifugal system permits an energy efficient solution



PERFORMANCES

Motor		2Hp
Airflow at 0 Pa	m ³ /h [cfm]	43,000 [25,300]
Airflow at 50 Pa	m ³ /h [cfm]	33,900 [19,900]
Airflow at 75 Pa	m ³ /h [cfm]	27,600 [16,200]
Airflow at 100 Pa	m ³ /h [cfm]	19,200 [11,300]
Specific performance at 0 Pa	m ³ /h/W [cfm/W]	26.4 [15.5]

* All values refer to 3 phases 50Hz single speed motors.
Note: airflow data are measured at standard conditions (20°C, 1,013hPa)

LOADING VOLUMES

		ASSEMBLED	DISASSEMBLED
Container 20 ft	pcs.	29	120
Container 40 ft	pcs.	58	250
Container 40 ft HC	pcs.	58	250
Trailer 13.60x2.40x2.60 m	pcs.	65	280

EUROEMME® EM50



- Family member of the time proven Euroemme® fan range
- Propeller is statically and dynamically balanced
- Patented centrifugal system permits an energy efficient solution
- Powerful springs keep shutters firmly closed when fan is not operating
- Every fan is individually checked for quality
- Fan housing and Venturi made of strong Munters Protect coated sheet-steel
- Shutters are made of pressed Munters Protect coated steel in order to ensure highest strength
- Central hub and v-belt pulley are made from die-cast aluminium, with reinforced ribs for prolonged lifetime



PERFORMANCES			
Motor		1.0/1.2Hp	1.5Hp
Airflow at 0 Pa	m ³ /h [cfm]	37,000 [21,800]	42,400 [25,000]
Airflow at 25 Pa	m ³ /h [cfm]	32,500 [19,200]	38,400 [22,600]
Airflow at 50 Pa	m ³ /h [cfm]	26,200 [15,400]	33,800 [19,900]
Specific performance at 0 Pa	m ³ /h/W [cfm/W]	33.9 [20.0]	27.0 [15.9]

* All values refer to 3 phases 50Hz single speed motors.
Note: airflow data are measured at standard conditions (20°C, 1,013hPa)

LOADING VOLUMES			
		ASSEMBLED	DISASSEMBLED
Container 20 ft	pcs.	29	170
Container 40 ft	pcs.	58	250
Container 40 ft HC	pcs.	58	250
Trailer 13.60x2.40x2.60 m	pcs.	65	300

VX51



- Cast aluminium airfoil propeller and UV resistant fibreglass housing
- Stainless steel hardware and fasteners
- High strength, extruded aluminium struts
- High quality, pillow block greasable bearings made in the USA
- 51" standard fan with poly discharge cone
- Greasable automotive-style belt tensioner
- Three phase models compatible with variable frequency drives
- Optional premium efficiency motor
- Optional belled inlet shutter for increased airflow

PERFORMANCES			
Motor		1.5Hp	
Airflow at 0 Pa	m ³ /h [cfm]	46,800 [27,600]	
Airflow at 25 Pa	m ³ /h [cfm]	41,000 [24,100]	
Airflow at 50 Pa	m ³ /h [cfm]	32,500 [19,100]	
Specific performance at 0 Pa	m ³ /h/W [cfm/W]	34.1 [20.1]	

* All values refer to 3 phases 50Hz single speed motors.
Note: airflow data are measured at standard conditions (20°C, 1,013hPa)

LOADING VOLUMES			
		DISASSEMBLED	
Container 20 ft	pcs.	20	
Container 40 ft	pcs.	42	
Container 40 ft HC	pcs.	48	
Trailer 13.60x2.40x2.60 m	pcs.	54	

TU600 - TU800



- Bell mouth inlet and cone outlet ensure very high energy efficiency
- Designed to withstand climatic extremes and solar radiation
- All components made of highly corrosion resistant materials
- Insulated butterfly damper for tight seal when fan is not in use
- Aerodynamic design ensures a low noise level
- Patented 'click system' allows for compact transport volumes and quick on-site assembly
- High efficiency Munters Drive motor version available on request



PERFORMANCES

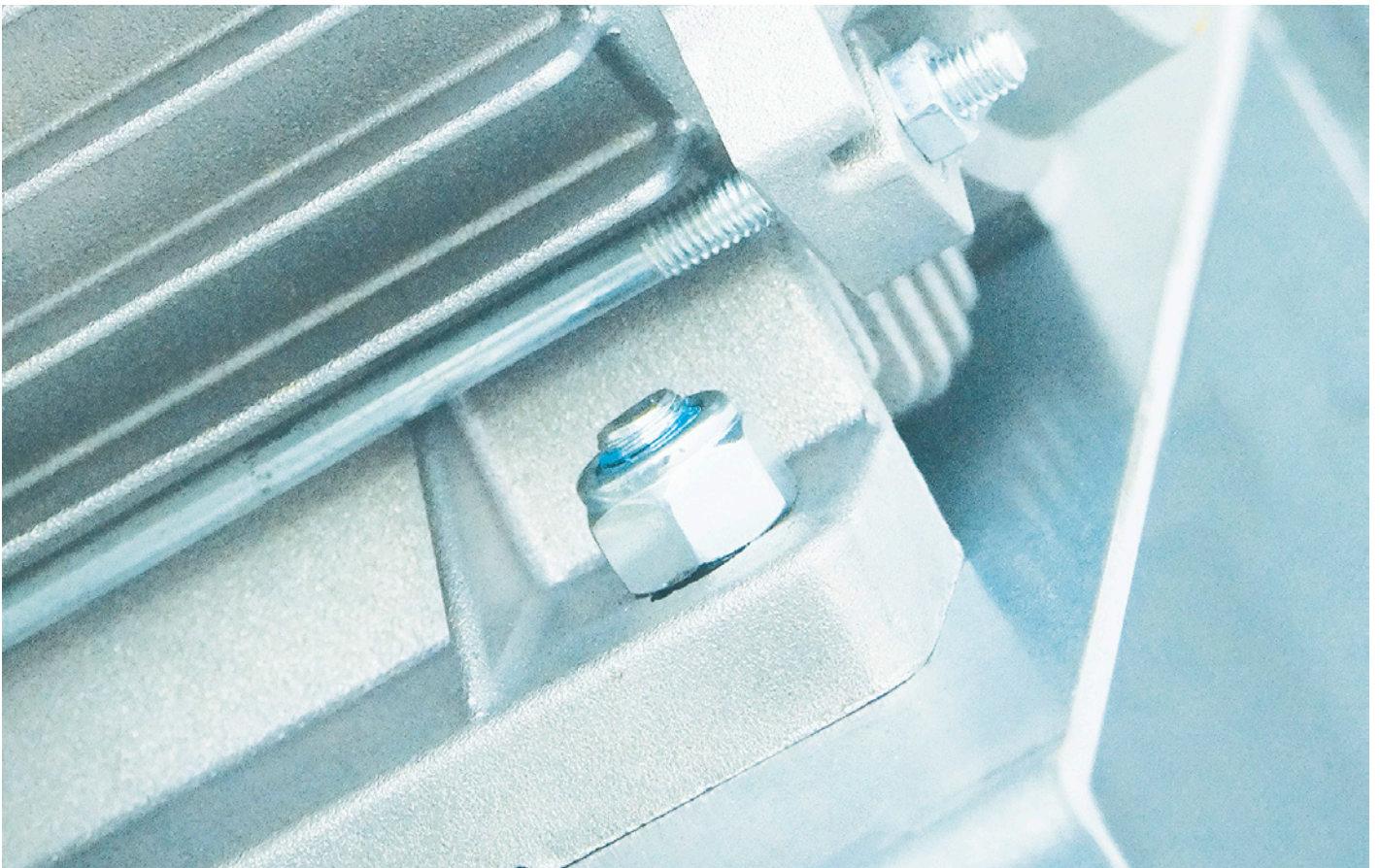
Model		TU600			TU800				
Motor type		STD	MUNTERS DRIVE		STD			MUNTERS DRIVE	
Motor size	[W]	250	660		370	430	550	660	
Airflow at 0 Pa	m ³ /h [cfm]	11,720 [6,898]	12,729 [7,492]	6,152 [3,621]	18,650 [10,977]	19,820 [11,666]	19,875 [11,698]	20,653 [12,156]	11,042 [6,499]
Airflow at 20 Pa	m ³ /h [cfm]	10,740 [6,321]	12,090 [7,116]	4,553 [2,680]	17,230 [10,141]	18,290 [10,765]	18,329 [10,788]	19,364 [11,397]	8,741 [5,145]
Airflow at 40 Pa	m ³ /h [cfm]	9,560 [5,627]	11,414 [6,718]	-	15,460 [9,099]	16,730 [9,847]	16,728 [9,846]	18,244 [10,738]	3,881 [2,284]
Specific performance at 0 Pa	m ³ /h/W [cfm/W]	27.5 [16.2]	28.4 [16.7]	91.4 [53.8]	31.7 [18.6]	33.0 [19.4]	25.0 [14.7]	34.0 [20.0]	116.0 [68.3]
Specific performance at 20 Pa	m ³ /h/W [cfm/W]	24.0 [14.1]	24.9 [14.7]	57.2 [33.7]	27.0 [15.9]	27.0 [15.9]	22.0 [12.9]	27.8 [16.4]	66.5 [39.1]
Specific performance at 40 Pa	m ³ /h/W [cfm/W]	20.1 [11.8]	22.0 [13.0]	-	23.0 [13.5]	22.4 [13.2]	19.1 [11.3]	24.0 [14.1]	27.8 [16.4]

* All values refer to 3 phases 50Hz single speed motors.
Note: airflow data are measured at standard conditions (20°C, 1,013hPa)

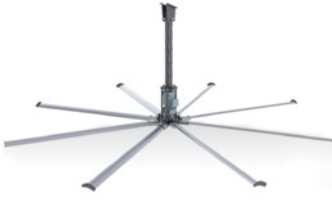
ACCESSORIES: LIGHT FILTER FOR TU

High light reduction factor.

AIR CIRCULATION



BREEZE FAN



- 8 blade High Volume Low Speed fan (HVLS)
- Variable speed control
- Extremely energy efficient
- Very high m³/h/W (high cfm per watt)
- Very low noise level
- Reduces heat stress and improves comfort
- Promotes healthier air quality, reduces bacteria and ammonia
- Easy to install, in new or existing structures

PERFORMANCES

Speed control		Min. speed (20%)	Max. speed (100%)
Airflow at 0 Pa	m ³ /h [cfm]	63,000 [37,000]	183,000 [108,000]
Specific performance at 0 Pa	m ³ /h/W [cfm/W]	420 [247]	141 [83]

Note: airflow data are measured at standard conditions (20°C, 1,013hPa)

LOADING VOLUMES

		DISASSEMBLED
Container 20 ft	pcs.	54
Container 40 ft	pcs.	108
Container 40 ft HC	pcs.	108
Trailer 13.60x2.40x2.60 m	pcs.	108

EUROEMME® MFS36 - MFS52



- Family member of the time proven Euroemme® fan range
- Large cooling footprint
- Statically and dynamically balanced propeller
- Cast aluminium propeller hub for the best bearing protection
- Belt driven propeller resulting in low noise levels
- Horizontal support bar reduces stress on fan housing when mounted overhead
- Motor positioned in air stream for maximum cooling
- Mounting kits for ease of mounting
- Optional belt tensioner

PERFORMANCES

Model		MFS36			MFS52	
		0.5Hp	0.75Hp	1.0/1.2Hp	1.0/1.2Hp	2.0Hp
Airflow at 0 Pa	m ³ /h [cfm]	16,740 [9,853]	19,770 [11,636]	21,973 [12,933]	37,638 [22,153]	44,803 [26,370]
Specific performance at 0 Pa	m ³ /h/W [cfm/W]	33.3 [19.6]	26.7 [15.7]	21.6 [12.7]	33.5 [19.7]	25.3 [14.9]

* All values refer to 3 phases 50Hz single speed motors.

Note: airflow data are measured at standard conditions (20°C, 1,013hPa)

LOADING VOLUMES

Model		ASSEMBLED		DISASSEMBLED	
		MFS36	MFS52	MFS36	MFS52
Container 20 ft	pcs.	50	28	170	170
Container 40 ft	pcs.	100	56	380	250
Container 40 ft HC	pcs.	124	56	380	250
Trailer 13.60x2.40x2.60 m	pcs.	144	63	400	250

EUROEMME® EMS50



- Family member of the time proven Euroemme® fan range
- Fan housing and Venturi made of strong Munters Protect coated sheet-steel
- Each motor is individually tested for 100% quality control
- Central hub and v-belt pulley are made from die-cast aluminium
- Welded wire guards divided into two parts ensure easy maintenance
- Propeller is statically and dynamically balanced
- Special threaded bushes on fan's side panels permit the fan to be easily hung
- Every fan is individually checked for quality

PERFORMANCES

Motor		1.0/1.2Hp	1.5Hp
Airflow at 0 Pa	m ³ /h [cfm]	35,650 [20,980]	41,200 [24,250]
Specific performance at 0 Pa	m ³ /h/W [cfm/W]	30.7 [18.1]	25.0 [14.7]

* All values refer to 3 phases 50Hz single speed motors.
Note: airflow data are measured at standard conditions (20°C, 1,013hPa)

LOADING VOLUMES

		ASSEMBLED	DISASSEMBLED
Container 20 ft	pcs.	33	170
Container 40 ft	pcs.	66	250
Container 40 ft HC	pcs.	66	250
Trailer 13.60x2.40x2.60 m	pcs.	83	225

EUROEMME® EMS36



- Family member of the time proven Euroemme® fan range
- Fan housing and Venturi made of strong Munters Protect coated sheet-steel
- Each motor is individually tested for 100% quality control
- Central hub and v-belt pulley are made from die-cast aluminium
- Propeller is statically and dynamically balanced
- Special threaded bushes on fan's side panels permit the fan to be easily hung
- Every fan is individually checked for quality

PERFORMANCES

Motor		0.5Hp	0.75Hp	1.0Hp
Airflow at 0 Pa	m ³ /h [cfm]	18,100 [10,650]	20,080 [11,820]	22,450 [13,215]
Specific performance at 0 Pa	m ³ /h/W [cfm/W]	25.5 [15.0]	22.5 [13.2]	18.7 [11.0]

* All values refer to 3 phases 50Hz single speed motors.
Note: airflow data are measured at standard conditions (20°C, 1,013hPa)

LOADING VOLUMES

		ASSEMBLED	DISASSEMBLED
Container 20 ft	pcs.	64	170
Container 40 ft	pcs.	128	380
Container 40 ft HC	pcs.	148	380
Trailer 13.60x2.40x2.60 m	pcs.	148	400



- Family member of the time proven Euroemme® fan range
- Fan housing and Venturi made of strong Munters Protect coated sheet-steel
- Each motor is individually tested for 100% quality control
- Central hub and v-belt pulley are made from die-cast aluminium
- Propeller is statically and dynamically balanced
- Special threaded bushes on fan's side panels permit the fan to be easily hung
- Every fan is individually checked for quality

PERFORMANCES

Motor		0.5Hp	0.75Hp
Airflow at 0 Pa	m ³ /h [cfm]	13,570 [7,990]	14,680 [8,640]
Specific performance at 0 Pa	m ³ /h/W [cfm/W]	20.2 [11.9]	17.8 [10.5]

* All values refer to 3 phases 50Hz single speed motors.

Note: airflow data are measured at standard conditions (20°C, 1,013hPa)

LOADING VOLUMES

		ASSEMBLED	DISASSEMBLED
Container 20 ft	pcs.	96	180
Container 40 ft	pcs.	196	400
Container 40 ft HC	pcs.	196	400
Trailer 13.60x2.40x2.60 m	pcs.	224	400

AIR INLET

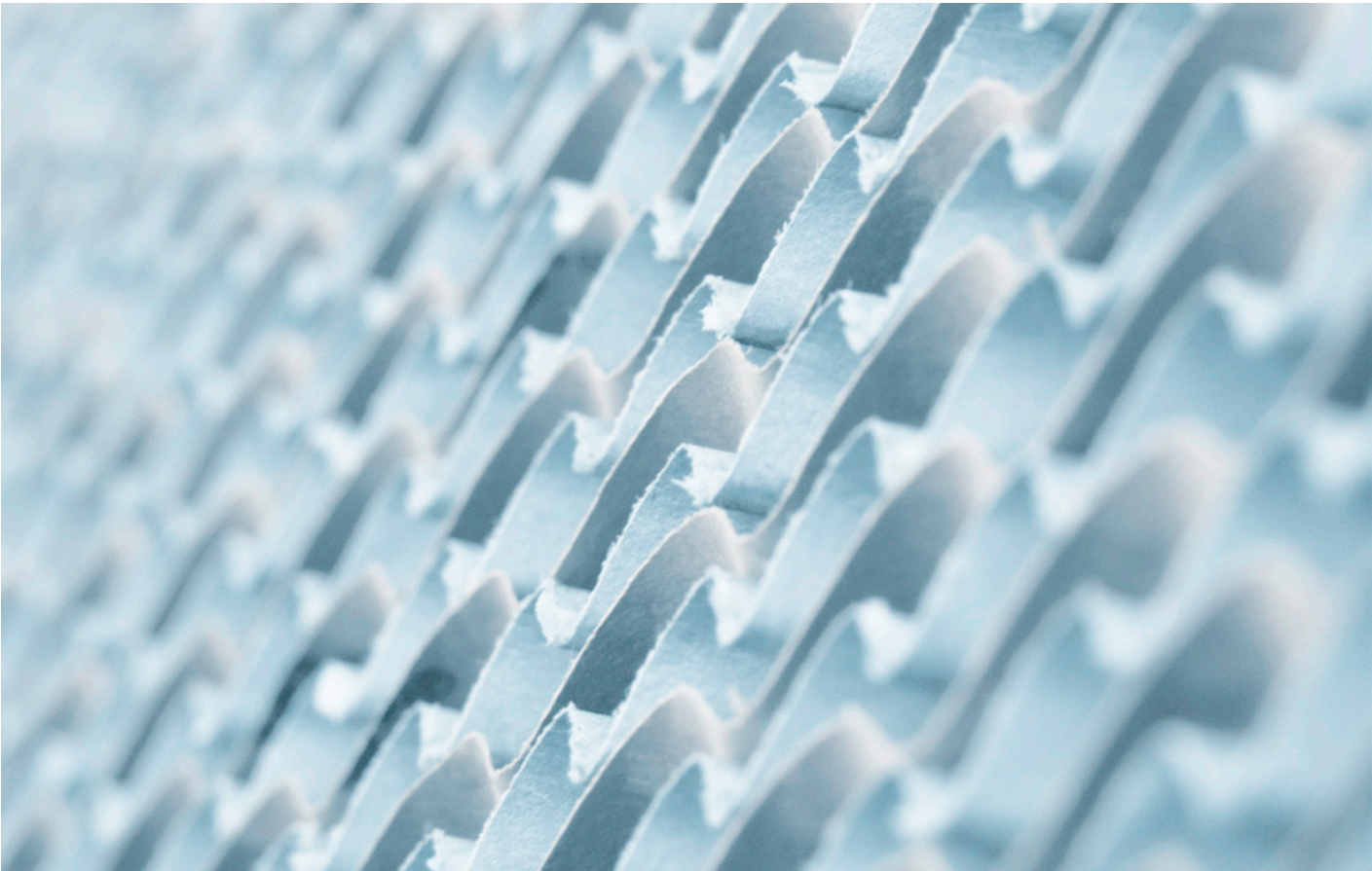


RIDGE VENT

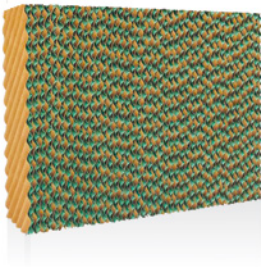


- Ideal combination of natural ventilation and optimum light dispersion in any form of barn or stable
- Rigid, weather proof construction, designed to withstand the climate conditions in northern Europe
- Double walled, 10 mm, UV resistant and optimal transparency
- Lexan PC (PolyCarbonate) sheet material with 10 years limited warranty on light transmission
- Wind deflectors made from corrugated metal sheets prevent rain, snow, hail and dirt from entering the barn/stable
- Wind deflectors can be equipped with a manual or automatic closing system to seal of the barn/stable during extreme weather conditions
- Varying height and width to accommodate individual requirements for air capacity and light dispersion
- The ridge vent is part of the emergency ventilation in case of fire

STANDARD DIMENSIONS			
Length	m	from 0.8 to 4.0	from 0.8 to 4.0
Height	cm	30	40
Width	m	2.10	2.10
LOADING VOLUMES			
			DISASSEMBLED
Container 20 ft	pcs.		150
Container 40 ft	pcs.		300
Container 40 ft HC	pcs.		300
Trailer 13.60x2.40x2.60 m	pcs.		300



CELdek® 7090-15



- High evaporation efficiency and superb wetting properties
- Low pressure drop when wet, leading to lower operating costs
- No water carry-over
- Low scaling and self cleaning
- Strong and self supporting
- Long life time and low running costs
- Quick and easy to install
- Environmentally friendly
- Consistent high quality

STANDARD DIMENSIONS

Length	mm	600			
Height	mm	1,000	1,500	1,800	2,000
Width	mm	100/150			

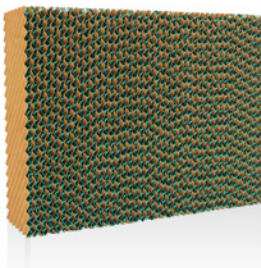
DISTRIBUTION PAD CELdek® 70120

Length	mm	600			
Height	mm	30			
Width	mm	100/150			

ACCESSORIES: LIGHT FILTERS FOR CELdek®

High light reduction factor.

CELdek® 7060-15



- High evaporation efficiency and superb wetting properties
- Low pressure drop when wet, leading to lower operating costs
- No water carry-over
- Low scaling and self cleaning
- Strong and self supporting
- Long life time and low running costs
- Quick and easy to install
- Environmentally friendly
- Consistent high quality

STANDARD DIMENSIONS

Length	mm	600			
Height	mm	1,000	1,500	1,800	2,000
Width	mm	100/150			

DISTRIBUTION PAD CELdek® 70120

Length	mm	600			
Height	mm	30			
Width	mm	100/150			

ACCESSORIES: LIGHT FILTERS FOR CELdek®

High light reduction factor.

WDP



- Quick and easy installation
- Easy maintenance and cleaning
- Flexible positioning of the water supply and discharge
- Resistant to corrosion (stainless steel 304, epoxy pre-coated galvanised steel)
- Designed to ensure an even wetting of the entire pad wall
- Stabilisation of the pad wall
- Fits any size of pad in height and width
- Available as complete system with all fitting parts
- Water filtration available upon request

STANDARD DIMENSIONS

Length	mm	multiple of 600			
Height	mm	1,205	1,705	2,005	2,205
Width	mm	100/150			

WDP MIST



- Alternative to evaporative pad cooling in cold continental and moderate climates, typically characterized by very brief periods of hot weather
- Minimizes heat stress which improves feed conversion for increase production
- Optimal relative humidity in-farm throughout the year
- Environmental benefits by effectively suppressing dust particles from the airstream
- Fast cleaning operation through preparatory soaking of various in-farm equipment
- Corrosion resistant components, made in stainless steel
- Quick and easy installation
- Fits on any size of housing system

PERFORMANCES

Maximum working pressure	Bar [PSI]	70 [1015]			
Water flow	l/min [gal/h]	12.0 [190.2]		21.0 [332.9]	
Nozzle tip diameter	mm	0.2	0.3	0.2	0.3
Maximum nozzles/pump	pcs	180	110	314	193
Nozzle water flow at 70Bar	l/h [gal/h]	4.0 [1.06]	6.5 [1.72]	4.0 [1.06]	6.5 [1.72]

DCP30 - DCP30 TOP4



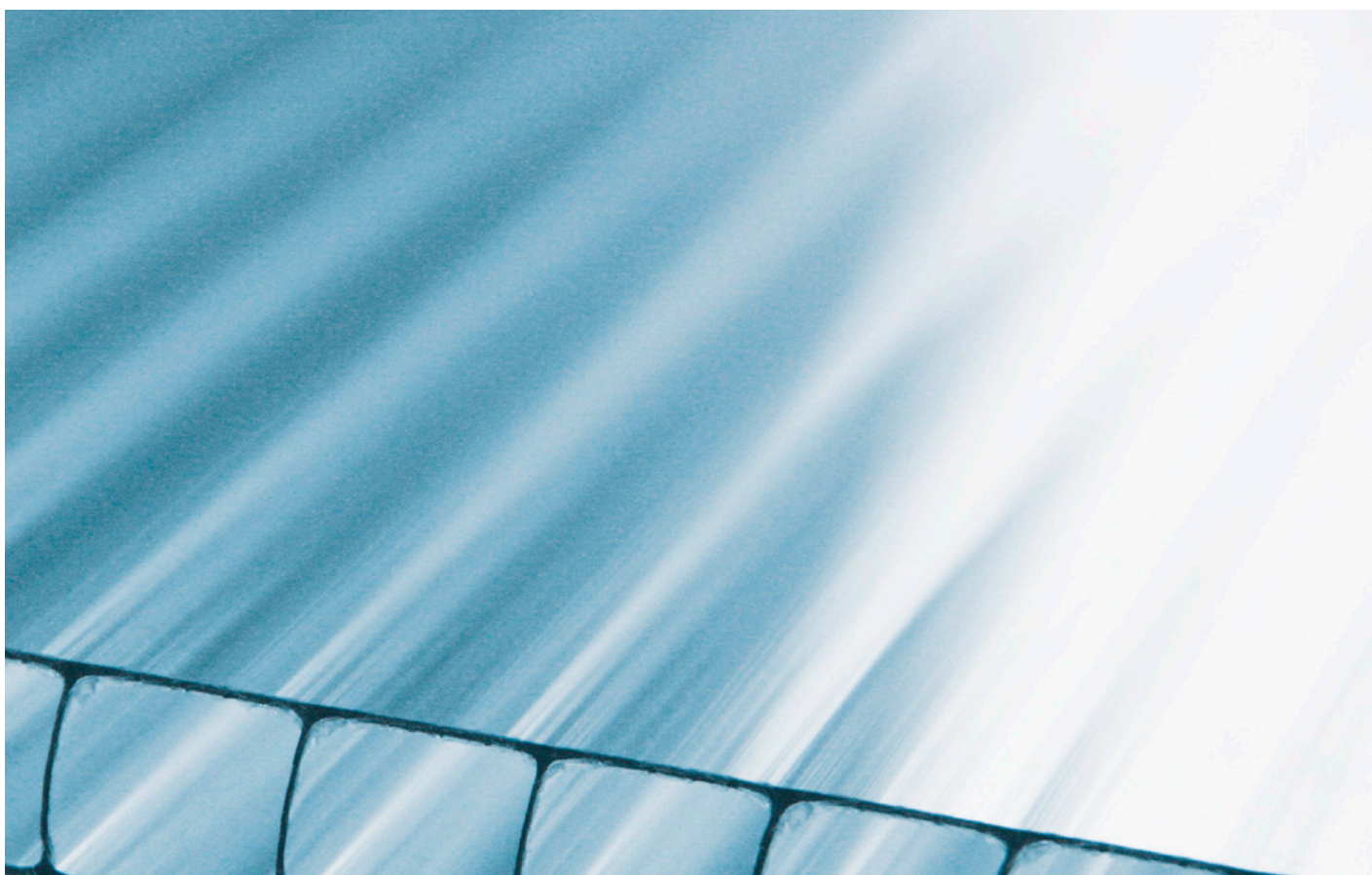
- Pre-coated galvanised steel housing
- Tank manufactured in thermoplastic material
- Electrical motor with IP55 protection grade
- CELdek® 7090-15 evaporative cooling pads
- Circulation water unit is CE approved
- Complete plumbing kit incorporated
- Electrical enclosure with safety and control switchgear
- Single-phase as option

STANDARD DIMENSIONS			
Model		DCP30	TOP4
Length	mm	1,640	1,360
Height	mm	1,000	1,000
Width	mm	1,520	2,500
PERFORMANCES			
Airflow at 0 Pa	m ³ /h [cfm]	16,000 [9,415]	
Motor power*	kW [hp]	1.1 [1.5]	
Cooling efficiency	%	83 - 85	
Cooling effect @ 50% RH	°C [°F]	DCP30 - TOP4	
		OUTSIDE TEMPERATURE	INSIDE TEMPERATURE
		34 [93]	27 [81]
		30 [86]	23 [73]
		26 [79]	20 [68]

* Three-phase electric motor as standard, single phase as options.

Notes: the DCP is intended to be installed outside the building. The cooling effect mentioned above are estimates and can vary based on local conditions.

CURTAINS



MUNTERS VENTILATION PANELS



- Optimal airflow for minimum cold ventilation
- Avoid draft and protect livestock against wind and weather
- Reduction of temperature loss inside barn/stable during cold winter days
- Double walled, 10 mm, UV resistant and optimal transparency
- Lexan PC sheet material with 10 years limited warranty on light transmission
- Sections of 3m width and varying opening height up to 1,4 m
- Easy installation (lightweight construction, mounted directly on barn/stable walls, few moving parts)
- Operation options: manual, powered units with thermostat control or manual switch - which ever matches your requirements

STANDARD DIMENSIONS AND SPECIFICATIONS

Height	cm	70	105	140
Width	m	3		
Material	Transparent double polycarbonate plate			
Opening mechanism	Manual or automatic rise - and lowering system			

ACCESSORIES: GUARD

Optional netting/bird guard available.

COMFORT CURTAIN



- Clean and tight appearance
- No vulnerability to bedding (sand and or straw)
- Easy / fast installation
- High versatility
- Simple functionality
- Easy operation, manual or automated
- Low cost and simple maintenance
- Competitive in cost and functionality

STANDARD DIMENSIONS

Height (max.)	m	3
Lenght (max.)	m	50m or 150m ²
Power	1 phase - 230V	
Function	Open from the top and down	

ACCESSORIES: REGULATION

Automatic regulation.

ROLLING CURTAIN



- Clean and tight appearance
- Easy / fast installation
- High versatility
- Simple functionality
- Fully automated operation
- The ventilation system can be adjusted according to the weather

STANDARD DIMENSIONS

Height (max.)	m	3
Length (max.)	m	100m or 300m ²
Power		1 phase - 230V
Function		Open from the top and down



PLATINUM PRO



- Munters Drive ready
- Access via the Web or Cloud
- Business Intelligence provides data analysis 24/7 and real time alarms via smartphone or web
- Supports a large number of input/outputs, both analog and digital and up to 200 heavy duty relays (2 HP)
- Smart On/Off/Auto override switches and battery backup option
- 16 independent heat zones
- Precision fogger and evaporative cooling system
- Failsafe emergency relay
- SD card and ARM CPU and multilanguage support

FARM DAIRY



- Designed for dairy open barns with forced ventilation
- 3 temperature zones
- Ventilation control through THI index values or Temperature.
- Variable speed control of Munters Drive motors
- Soaking and Fogging cycles control
- Curtain control according to set temperature
- User friendly interface
- Supported by Munters PC communication software

NATURAL CENTER - NATURAL MASTER



- Maximum and minimum ventilation level according to outside temperature
- Differentiated target temperature settings for day and night time
- Control, Management and History features
- Optional extras include automatic feeding and watering plant control as well as control of spraying and cooling systems
- Up to 4 independent curtains
- Manages an entire network from a single computer
- User-friendly programming interface
- Sends alarms alerting you of any problem

NOTES



www.munters.com

Australia Phone +61 2 8843 1594, agh.info@munters.com.au, **Brazil** Phone +55 41 3317 5050, contato@munters.com, **Canada** Phone +1 517 676 7070, aghort.info@munters.com, **China** Phone +86 10 8048 3493, marketing@munters.cn, **Denmark** Phone +45 98 623 311, aghort@munters.dk, **India** Phone +91 20 6681 8900, info@munters.in, **Indonesia** Phone +66 2 642 2670, info@munters.co.th, **Italy** Phone +39 0183 5211, info@munters.it, **Japan** Phone +81 3 5970 0021, mkk@munters.jp, **Korea** Phone +82 2 7618 701, munters@munters.co.kr, **Mexico** Phone +52 818 2625 400, dhinfo@munters.com, **Singapore** Phone +65 7 446 828, info@munters.com.sg, **South Africa and Sub-Sahara Countries** Phone +27 11 997 2000, info@munters.co.za **Spain** Phone +39 0183 5211, info@munters.it, **Sweden** Phone +46 8 6266 300, info@munters.se, **Thailand** Phone +66 2 6422 670, info@munters.co.th, **Turkey** Phone +90 262 7513 750, info@muntersform.com, **USA** Phone +1 517 676 7070, aghort.info@munters.com, **Export & Other countries** Phone +39 0183 5211, info@munters.it