

PRODUCT CATALOGUE



DUMORE ENTERPRISES LTD.

12-20 ST. JOSEPH ROAD, ST. JOSEPH VILLAGE,
SAN FERNANDO, TRINIDAD, W.I.

- Oilfield and Industrial Supplies - (868) 225-4440
- DutorX Division - (868) 652-2588
- Rentals Division - (868) 677-2910
- Transport Division - (868) 225-5555

Fax: (868) 653-5986

Email: industrial@dumore.co

<http://dumore.co>



GASKETS

BOLTS

THREADED BAR

NUTS

WASHERS

ANCHORS

SCREWS

PINS

Riveting products

PIPE FITTINGS

LUBRICATION

SHELVING

Nobar Torque Wrench

HYDRATIGHT

VALUE ADDED PRODUCTS

PUMP & VALVE PACKING

GLOVES

BBI TOOL

GASKETS

- **Soft cut gaskets**

Available in a wide variety of materials and sizes from ½ inch to 96 inch and can be supplied in ring, full-face, custom shapes or full sheets.

List of soft sheet material.

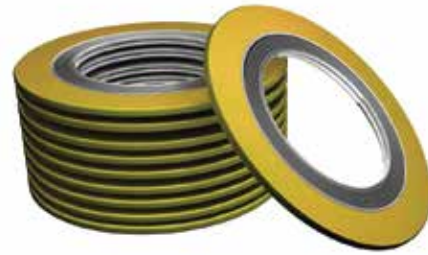
- Pilot Seal 164
 - Pilot Flon 570
 - Pilot 34
 - Pilot 34R wire reinforced
 - Pilot Seal 178
 - Pilot Acid
 - GHR Graphite Lament
 - Teflon
 - Red Rubber
 - Insertion Rubber
 - Neoprene Rubber
 - EPDM Rubber
 - Viton Rubber
 - Butyl Rubber
 - Mule 166 Jointed
- Thickness ranges from 1/100 to 1/2in in selected materials



- **Semi Metallic & Metal Gaskets**
- **Spiral Wounds Gaskets**

Available in a variety of styles to suit applicable flange facing Sizes available ½ inch to 60 inches from 150LBS up to 2500LBS.

Assorted filler and exotic metals configuration for regular and special applications.



- **Kammprofile Gaskets**

Lamons Kammprofile gaskets are recognized as a problem solver for heat exchangers, large vessels, and equipment that experience excessive movement due to thermal expansion.

Available in a variety of styles to suit applicable flange facing.

Exotic metals configuration for regular and special applications.



- **Corrugated metal gasket (CMG)**

Corrugated metal gasket technology. An excellent choice for 150 and 300 class ASME flanges where available bolt loading is minimal. CMGs can be direct replacements for spiral wound gaskets and can eliminate inward buckling issues while creating a seal at moderate flange stresses.

Available in a variety of styles to suit applicable flange facing

Exotic metals configuration for regular and special applications



- **Jacketed & Metal Gaskets**

Single Jacketed, Double Jacketed or Solid metal.

Available in a variety of styles to suit applicable flange facing.

Exotic metals configuration for regular and special applications.



- **Ring Joint Gaskets**

Manufactured in accordance to API-6A ASME B16.20 Specification. In standard and exotic metals.

- RTJ oval
- RTJ Octagonal
- RTJ RX
- RTJ BX
- Transition 377T
- Flange insulation gasket kits



Standard styles RF & FF in compressed fiber, Phenolic, Rubber Faced

Phenolic, & G10 glass epoxy

Specialty flange insulation kits in metallic Kammprofile (Kindly refer to your representative for further information.

Flange protector bands in various styles and materials.

BOLTS

- **Hex cap screw**

Hex cap screws feature a washer face under the head and a chamfered point, whereas a hex bolt does not have a washer face or chamfered threads. They are made of low-carbon steel and are very common in construction or repair projects.

Available in imperial and metric
Stainless steel
Brass
Plain finish
Silicone bronze
Zinc
Galvanized coating



- **Hex flange screws (frame bolt)**

These bolts are either serrated or non-serrated. The non-serrated versions are commonly known as flange bolts. Hex flange screws have a circular flange beneath the head which acts as a washer and distributes pressure.

Available in imperial and metric
Black phosphate
Zinc



- **Socket head cap screw**

Socket cap screws are commonly used in machine parts, die fixturing, and clamping. The socket head enables driving where there is not sufficient space for wrenches or sockets.

Available in imperial and metric
Plain finish
Stainless steel



- **Flat socket-head cap screw**

These bolts are used in situations where a strong fastener that has the ability to remain flat on the surface is necessary. Typically used on machine parts, vehicles, and various tools these fasteners are ideal for tight spaces where it may be difficult to fit other fasteners. They are made from strong materials for maximum reliability.

Available in imperial and metric
Plain finish
Stainless steel



- **U-bolts**

These bolts as implied by the name, is a U shaped bolt. There is threading on both ends and the bolt is conventionally used in securing pipelines (both for fluids and gases), cables, ropes, machinery and even as concrete fasteners.

Available in imperial and metric
Stainless steel
Hot dip galvanized
Zinc
Plain finish
Pro coating



- **J bolts**

These bolts, as the name suggests, bear the appearance of the letter J. The long end (available in different lengths) is threaded while there is a hook on the other end. They are used in the erection of new structures such as buildings when the walls are being attached to concrete.

Available in imperial and metric
Zinc
Stainless steel
Cadmium plated
Galvanized



- **Lag bolts (lag screws)**

Lag bolts or lag screws are known for their durability and stability. They are used in the connection of large pieces of lumber or other heavy materials, which are carrying a heavy load.

Available in imperial
Stainless steel
Zinc



- **Eye-bolts**

This bolt helps fastened objects such as plumbing and wires.

Available in imperial and metric
Imperial forged steel
Metric forged steel



- **Carriage bolts**

These bolts are ideal in situations where the head of the bolt may be inaccessible for tightening. They feature a square shoulder with a rounded head and resist rotation when the nut is being tightened or removed. Some examples of usage may be in the construction of docks, swing sets and other areas, which require smooth surfaces.

Available in imperial and metric
Zinc
Hot dip galvanized
Stainless steel



- **Stop studs (double end studs)**

These studs have threading on both ends to accommodate a nut on one end and insertion into a threaded hole on the next. Precision is key when using these bolts, so they should only be used when the exact thread length that is needed, is known.

Available in imperial and metric
Stainless steel
Plain finish
Cadmium
Zinc



Threaded Bar

- **Threaded Bar**

MATERIAL

ASTM A193 B16

ASTM A193 B7

ASTM A193 B7/ ASTM A320 L7 DUAL

ASTM A307 A

ASTM A307 B

ASTM A320 L7

ASTM F1554 GRADE 36

COPPER ALLOY HIDURON 191 UNS C72420

STAINLESS STEEL 304

STAINLESS STEEL 316

STAINLESS STEEL ASTM A193 B8M

STAINLESS STEEL ASTM A320 B8C

STAINLESS STEEL ASTM A320 B8M

STAINLESS STEEL ASTM A320 B8T

IMPERIAL DIAMETER

#8 TO 1-1/2";

METRIC DIAMETER

M5 TO M64



NUTS

- **Finish-hex nuts**

These nuts are used general-purpose fastening.

Available in imperial and metric

Stainless steel

Zinc

Brass

Plain finish

Hot dip galvanized

Silicone bronze



- **Heavy-hex nuts**

These nuts are larger and stronger than the finish next nuts for larger diameter bolts.

Available in imperial and metric

Stainless steel

Zinc

Plain finish

Stainless steel



- **Hex lock nuts**

Lock nuts have extra strength than the normal nut, these nuts have a built in locking system that helps bolts stay locked compared to the traditional nuts.

Available in imperial and metric

Stainless steel

Zinc



- **Slotted nuts**

These nuts are commonly known as castellated nuts, which allow receiving the insert of a cotter pin. This nut is mainly used in the automotive manufacturing sector.

Available in imperial and metric
Zinc



- **Acorn nuts**

Acorn nuts commonly known as cap nuts, these nuts are used to protect bolts and screws from stripping/ damaged.

Available in imperial and metric
Stainless steel
Zinc



- **Coupling nuts**

These nuts are used to join threaded rods, pipes and other threaded parts.

Available in imperial
Stainless steel
Zinc imperial



- **Machine screw nuts**

These screws are used to secure machine parts to appliance and more.

Available in imperial and metric
Zinc
Stainless steel
Plain finish
Brass



- **Tee nuts**

These nuts are fastened into materials like wood, plastic, and metal to create a even fit with the surface.

Available in imperial and metric
Zinc



- **Wing nuts**

These nuts are easily fastened by hand making application very easy to use, these buts are commonly used in furniture, drums and interchangeable parts.

Available in imperial and metric
Stainless steel
Zinc imperial



WASHERS

- **Flat washers**

These washers are disc shaped and generally positioned beneath the bolt head or nut providing distribution of the fastener's load.

Available in imperial and metric
Zinc
Brass
Stainless steel
Silicone bronze
Hot dip galvanized
Plain finish
Copper finish
Xylan



- **Lock washers**

These washers are mostly used in conjunction with flat washers and prevent the turning, slipping or loosening of nuts and bolts due to vibration and torque by holding the nuts and bolts in place. They are regularly used in airplanes and structural applications.



- **Belleville washers**

These washers are known as disc springs or conical spring washers, are washer shaped springs. With their slight conical shape, they can be used singly for a specific load or in stacks to achieve support of higher loads with small deflections. Belleville washers are most commonly used for resolution of vibration issues, thermal expansion, maintenance of distance between machine parts and bolt creeping concerns.

Available in;
Zinc
Stainless steel



- **Beveled washers**

These washers also known as leveling shims lend structural support - such as in the case of fastening bolts to I-beams. They feature one flat side while the other is angled (to cater for surface imperfections) and are used with a threaded fastener.



- **Fender washers**

These washers can be used to distribute the force applied during tightening and where a wider outer diameter is needed. While they possess similar characteristics to the standard washer, they differ in the diameter of the outside relative to the center hole. They are frequently used in thin sheet metal, electrical, plumbing, automotive etc.



- **Neoprene bonded washers**

These washers are ideal for plumbing and outdoor usage as they are resistant to rust and other forms of corrosion. Since they have a bonded rubber coating, they are able to form a tight seal and additionally lends support to fragile materials which may need extra cushioning below the fastener.



ANCHORS

- **Wedge anchors**

Wedge anchors are designed to anchor objects into concrete. They are installed into a pre-drilled hole, and then tightening the nut to securely anchor into the concrete expands the wedge. They are not removable after the anchor is expanded.

Available in imperial
Zinc
Stainless steel
Hot-dip galvanized



- **Sleeve anchors**

Sleeve anchors are inserted into pre-drilled holes in masonry materials where they expand for a secure fit, anchoring objects to the concrete or brick.

Available in imperial
Zinc
Stainless steel



- **Screw anchors**

Screw anchors are placed into difficult materials to prepare for the insertion of screws. Drywall or masonry walls are common examples of materials with which screw anchors are used.

Available in imperial
Blue coated



- **Hammer Set**

Drive pin anchors are installed in pre-drilled holes with a hammer strike that drives a nail into the anchor body, expanding the anchor to form a tight fit. These anchors secure light loads to masonry materials.

Available in imperial



- **Threaded rods/studs**

Available in imperial and metric
Zinc
Stainless steel
Plain finish
Cadmium plated
Galvanized coating



- **Teflon Bar**



- **Powder activated tools**

Available models;
Sa270
T3
MD380
D45

<https://www.youtube.com/watch?v=4VISP9akV-s>



- **Epoxy anchoring**

These anchoring epoxies secure reinforcing bar, threaded rod, bolts, dowels and pins, and more to concrete.

- **G5 High Strength Epoxy**

24 hour cure time at 70° F fire Rated: tested up to 4 hours fire resistance period, this product provides the best edge & spacing distance in the market.

- Virtually odorless, can be used indoors which is also compliant with 2009 IBC category 1 performance rating.

<https://www.youtube.com/watch?v=YNsNKKJIMg8>



- **C6+**

Reduced utilization capacity means less likelihood of connection failures, improved performance in dry, saturated, and water-filled conditions. One easy-to-use adhesive for most environmental and weather conditions. Excellent performance in diamond cored and oversized holes and installs perfectly even when concrete are wet.

https://www.youtube.com/watch?v=9ajB6B_Nqq0



- **Epoxy Injection Tool**

This tool is used for the application of the C6+ and G5 Epoxy



- **Nail-drive anchoring**

These anchors are installed in pre-drilled holes with a hammer strike that drives a nail into the anchor body, expanding the anchor to form a tight fit. These anchors secure light loads to masonry materials.

Available in imperial



- **Drop-in- anchors**

Drop-in anchors are internally threaded concrete anchors, often installed overhead and flush with the surface of the concrete. These anchors are often used to support handrails, lighting fixtures, piping, and more.

Available in imperial

<https://www.youtube.com/watch?v=t6eENSix094>



SCREWS

- **Self-drilling screws**

These screws are able to drill a hole without creating a pilot hole.

Available in;
Stainless steel
Zinc



- **Drywall screws**

These screws create threads while being thrilled into drywall, these screws do not damage the drywall. Drywall screws can be used to fastened objects onto wood.

Available in;
Black
Zinc



- **Machine screws**

These screws are used to secure machine parts to appliance and more.

Available in;
Zinc
Stainless steel
Brass



- **Socket-set screws (setscrews)**

These screws are used to fastened objects within or against other objects without having to use a nut.

Available in;
Stainless steel
Metric
Plain



- **Thread cutting screws**

These screws are used to create threads on existing holes in metal materials.

Available in;
Stainless steel
Zinc
Plain finish



- **Self-tapping screws**

These screws can tap its own holes while being drilled into materials.

Available in;
Zinc
Stainless steel



- **Wood screws**

These screws are usually used to join wood to wood.

Available in;
Zinc
Plain finish
Brass



PINS

- **Cotter pins**

Cotter pins, or split pins, are bent to insert into the holes of clevis pins and other fasteners to secure the fastener system.

Available in imperial
Zinc imperial
Stainless steel



Riveting products

- **Rivets**

Available in imperial
Stainless steel
Aluminum
Steel



PIPE FITTINGS

- **Bushing fitting**

Imperial diameter: ½ inch to 4 inch



- **Coupling fittings**

Imperial diameter: ¼ inch to 2inch.



- **End-cap fittings**

Imperial diameter: ½ to 1 inch.



- **Elbow fittings**

Imperial diameter: ½ inch to 4inch



- **Flange fittings**

Imperial diameter: ½ inch to 16inch



- **Nipple fittings**

Imperial diameter: ¼ inch to 6inch



- **Pipe**
Imperial diameter: ½ inch to 6 inch



- **Plug fittings**
Imperial diameter: ½ inch to 1 inch



- **T fittings**
Imperial diameter: ½ inch to 6 inch



- **Pipe Union fittings**
Imperial diameter: ½ inch to 1 inch



- **Ball valve pipe fittings**
Imperial diameter: ½ inch to 2 inch



- **Gate valve pipe fitting**
Imperial diameter: ¾ inch to 2 inch



LUBRICATION

Klüber

- **Synth 14-222**

Synthetic lubricating grease for universal application in the food-processing and pharmaceutical industries.



- **Food 4nh1-68**

NH 1-15...100 oils are hydraulic oils based on synthetic hydrocarbons. Klüberfood NH 1 oils offer good oxidation stability due to the synthetic base oil, also good stability at low temperatures and protection against friction and wear. They meet HLP requirements acc.



- **Synth 4uh1-220n**

Klüberoil 4 UH1 N is a synthetic high-performance gear and multipurpose oil based on polyalphaolefin satisfying the growing requirements and increasing power density of modern gears. Klüberoil 4 UH1 N is based on high-grade raw materials and advanced additives, enabling maximum performance in the lubrication of all gear components.



- **Synth 460n**

·Klübersynth GEM 4 N is a synthetic high-performance gear and multipurpose oil based on polyalphaolefin satisfying the growing requirements and increasing power density of modern gears. Klübersynth GEM 4 N includes KlüberComp Lube Technology*, i.e. it is based on especially high-grade raw materials and advanced additives, enabling maximum performance in the lubrication of all gear components.



Vibra-Tite

- **Vibra-Tite 908 Food Grade Anti-Seize**

Vibra-Tite Food Grade Anti-Seize is specifically developed for use in applications where incidental food contact is possible. Protects metal parts from seizure, galling, rust, corrosion and heat freeze by adhering to the metal surface, meets NSF (H1).



- **Vibra-Tite 9072 Nickel Anti-Seize**

Ideal for extreme temperatures prevents seizing, galling, pitting, excessive wear, and corrosion. Copper and graphite freebase. This product is resistant to harsh chemical environments and works excellent for stainless steel and other metal fittings.



- **Vibra-Tite 9071 Copper Anti-Seize**

Ideal for softer metals prevents seizing, galling, pitting, excessive wear, and corrosion. The lubricating formulation is a protective paste consisting of fine flakes of copper and graphite suspended in a blend of lubricants and oils.



- **Vibra-Tite 906 Marine Grade Anti-Seize**

Protects assemblies exposed to fresh and salt water. Works well in high-humidity conditions. Has no metals and is not a marine pollutant. Contains Molybdenum Disulfide for extreme pressure applications. Use in extreme temperatures up to 2,600°F (1,427°C).



- **Lamons**

Moly B Thread Lubrication

Unsurpassed anti-seizing and anti-galling performance with excellent rust and corrosion inhibitors content. The temperature limit is 750°F, but contains solid additives that remain intact up to 1500°F. The K-Factor is between .10 and .11.



Nickel 328 Thread Lubrication

Unequaled in its ability to reduce seizing and galling in high temperature applications, Nickel 328 has very predictable and consistent friction factors. The upper temperature limit is 2500°F long term, intermittent or sustained. The K-Factor through 13000 lbs. load is .172, from 13,001 through 93,000 lbs. is .144 and above 93,001 lbs. through 650,000 lbs is .120. The highest solids content available is 77%.



GP-450 Lubrication

is a moly based thread lubricant developed in the spirit of our popular Moly B compound. This thread lubricant is more economically priced so that it can be used in more general applications. The compound maintains a higher level of solids, which creates a formula that specifically addresses break out torque and low initial friction properties. Lamons GP-450 is an engineered compound that has been developed to bring some of the unique benefits of Moly B to a broader array of plant applications.



Metal Framing & Support Systems

- **Unistrut (framing support Solutions)
Channels**



Spring nuts



Flat plate fittings



Pipe clamps



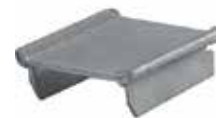
Beam clamps



90-degree fittings



N- caps



Trolley assembly



Prime angel



- **Quantum storage**

Shelving post kits sizes 39 inches high and 75 inches

Shelving bins sizes from 4 1/8 to 16 1/2 inches

Shelves sizes from 18x36 and 24x36



<http://www.quantumstorage.com/>

- **Pallet Racking**

Uprights sizes from 7ft to 14ft



- **Beams sizes from 108 inches long**



- **Wire decks sizes from 36x52 and 42x52**



- **Post Protectors**



Nobar Torque Tools

- **Torque Screwdrivers**

Norbar's range of Torque Screwdrivers embodies the values of the TT Series brand: accuracy, ease of use and comfort in use. Supplied with a Declaration of Conformance, which meets the requirements of ISO 6789-1:2017 ($\pm 6\%$ for tools up to 10 N·m). Furthermore, they are engineered to retain this accuracy over many thousands of tightened cycles.



- **Torque Wrenches**

Norbar Torque Tools manufacture an extensive range of high quality torque wrenches to cover torque values from 1 N·m to 2000 N·m. They are designed and manufactured to meet international standards for accuracy.



- **Manual Torque Multipliers**

Norbar gearboxes are built to an extremely high standard of precision. All gears rotate on needle roller bearings about hardened and ground journal pins. As a result, Norbar HandTorques can be relied upon to have a torque multiplication accuracy of $\pm 4\%$, throughout the operating range, taking the uncertainty out of high torque tightening.



- **Pneumatic Torque Multipliers**

Hand operated torque multipliers are ideal for low volume or intermittent use or when there is no power source available. However, for production lines or whenever a large number of bolts is involved, a powered multiplier will save a considerable amount of time.

PneuTorque operation is quiet - less than 85dB(A) with absolutely no impacting. These two factors make PneuTorques comfortable for the operator to use, reducing fatigue and consequently increasing safety.



- **Electronic Torque Multipliers**

Norbar's electronic torque tool utilises patent pending motor technology and control software to give unprecedented joint control. Traditional electronic torque tools give vastly different results depending on the joint type. Norbar's intelligent joint sensing eliminates these issues so that you can be confident in your bolting work.



HYDRATIGHT

- **Hydraulic Torque Wrenches**

Hydratight's Hydraulic Torque Wrenches is specifically designed to deliver accurate performance in limited space. The high performance tool has been modified from a standard wrench to be thinner, lighter and narrower on the nose which makes it uniquely equipped to access awkward nuts on blow out preventors. Tooling sizes available from 1 7/16 inches to 5 3/4 inches.



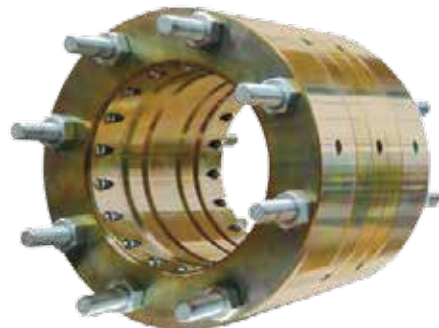
- **Tensioning**

Bolt tensioners are suited to both topside and subsea applications. We have designed innovative features to increase the efficiency and speed of use across both these sectors, topside from 1 1/4 inch to 4 inch and subsea sizes available as per requested.



- **Mechanical Connectors**

Mechanical Connector replaces the need for the welding of topside and subsea piping and pipelines in oil and gas and petrochemical applications.



- **Topside connectors**

Topside Connectors are designed to be used as a fire-safe, weldless replacement for a permanent or temporary pipe repair, for tie-ins or capping redundant lines, sizes available as per requested.



- **Subsea connectors**

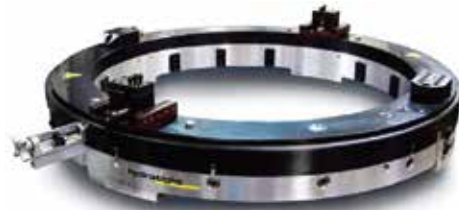
Mechanical Connectors are used subsea in diver depths for pipeline tie-in and spool repair. The high performance products are designed to be simple and reliable to install with key diver-friendly design features, including hands-clear” activation and external pressure test. No connector has ever proved impossible to install subsea, and none have ever failed in service, sizes available as per requested.



- **Machining**

- **Cold Pipe Cutting and Beveling**

The machines are engineered to cut, bevel, counter-bore, single point and flange face on pipe and tubing ranging from 0.84 in. (21.34 mm) to 177 in. (4495.8 mm) on all types of materials and wall thicknesses, sizes available from 2 inch to 36 inches.



- **Facing and End Prepping Machines**

Our uncompromising approach to quality means that our on-site machining range remains the perfect choice for any task, from re-facing, milling and beveling, to squaring, counter-boring and end prepping configurations for welding.



VALUE ADDED PRODUCTS

- **Cutting blade**
- **Cutting cups**
- **ZRC Coating**

Designed specifically for field and shop repair of hot dip galvanizing Silver finish closely blends in with the color of new hot dip galvanizing. Meets and exceeds galvanizing repair specifications ASTM Des, apply by brush, roller or spray.

<https://www.youtube.com/watch?v=jzATFrIIN4Y>



- **E-Z loc Threaded Repair**
<https://www.youtube.com/watch?v=kDI7b7A4qg0>

- **E-Z LOK Hard Wood Inserts**

Hard wood inserts are beneficial in a variety of ways. Some of the main benefits of using a hard wood insert include:

- Superior hard wood holding power
- Sizing variety, inch (coarse/fine) & metric
- Brass or stainless steel options
- Easily installs with a screwdriver, bolt/jam nut, or optional drive tool

Soft wood and hard wood imperial diameter: ¼ inch to 3/8 inch



- **Solid Threaded Inserts for Metal**

- Strong: screw machined out of solid steel for greater strength Simple easy to install drill, tap, and thread in like an ordinary fastener



- Standard OD Threads: permit the use of standard drills and taps
- Self-Locking: pre-applied adhesive activates upon installation
- Vibration Resistant: adhesive secures the insert in place so it won't back out
- Seals against Liquids/Gases to pressures of 6,000 psi. Imperial diameter: number 4 to 1 1/8 inch Metric diameter: m6 to 24m.



• **Coil Threaded Inserts**

- Quickly repair damaged threads in soft metal
- Protect tapped holes from stripping and wear
- Made from corrosion resistant 18-8 stainless steel
- Available in inch sizes from #2 to 1-1/2
- Available in metric sizes from M2 to M39



• **Hex Drive Inserts for Wood**

Generically referred to as Type D (flanged) or Type E (flush) insert nuts, E-Z

LOK's hex drive inserts provide sturdy machine threads in soft woods. These hex drives are an ideal solution for any application where assembly or disassembly could lead to thread erosion or stripping.



• **Press Inserts for Plastic**

Press inserts are threaded inserts designed for post-molding installation in either thermoset plastics or thermoplastics. A slotted design with diamond-knurled OD allows for "cold" installation with optimum torque/pull-out resistance. Cold installation of threaded inserts reduces the cost of moldings and eliminates the need to "chase" threads after molding.



Sizes from 1/4 inch to 3/8 inch

- **Micro Plastics**

Nail in cable clips
Sizes from 4mm to 18.7mm



Spilt loom
Sized from 1/2 and 5/8



Safety spiral wrap
Sized from 1/4 inch to 1 inch.



Label bided ties



Wire connectors



Cable gland
Sizes from 1/4 inch to 1 1/2 inch



Hex jam nuts
Sizes from 1/4 to 1 1/4 inch



Nylon ties
Sizes from 5 inches to 48 inches



Cable ties installation tools.



- **WD40 Specialist Line**

- Dry lube PTFE Spray**

- Lubricates and provides superior long-lasting corrosion protection with no oily residue. It dries quickly and resists dirt, dust and oil. WD-40 Specialist Dirt & Dust Resistant Dry Lube PTFE Spray reduces friction and wear on blades and bits, door and window tracks, slides, conveyor belts, rollers and hinges.

- <https://www.youtube.com/watch?v=B9DnATLtlIM>



- Spray & Stay Gel lubricant**

- Offers long lubrication that won't run, drip or make a mess. Unlike standard lubricants, this unique gel stays where you spray it, making ideal for use on moving parts like chains, cables, gears, rollers and bearings.

- <https://www.youtube.com/watch?v=VKNa7NPsklo>



- Water resistant silicone lubricant**

- Safely lubricates, waterproofs and protects metal and non-metal surfaces, including rubber, plastic and vinyl better than leading competitors.

- <https://www.youtube.com/watch?v=os2gn3ukHc0>



Protective white lithium grease

Ideal for metal-to-metal applications that require heavy-duty lubrication and protection against rust and corrosion.

<https://www.youtube.com/watch?v=aXbubTU3LUQ>



Rust Release Penetrant Spray

Loosening rusted components can be time-consuming. Break the bonds that hold stuck parts together, and get on with the job.

<https://www.youtube.com/watch?v=3STFLzNylgc>



Rust Remover Soak

Dissolves rust quickly without harming surrounding parts, trim, gaskets or paint.

<https://www.youtube.com/watch?v=VagFy8Kj4Bo>



Long-term Corrosion Inhibitor

Protects metal parts, blocking rust and corrosion for up to one year outdoors and two years indoors.

<https://www.youtube.com/watch?v=3STFLzNylgc>



Industrial-strength Degreaser -Fast-acting Formula

A powerful solvent-based degreaser that quickly cleans machinery, engines and equipment to look like new and run smooth.



Electrical Contact Cleaner Spray

Blasts away oil, dirt, flux residue and condensation from sensitive electronics and electrical equipment with pinpoint precision.

<https://www.youtube.com/watch?v=jQiIRcjPzKI>



Machine & Engine Degreaser Foaming Spray

Makes equipment run smoother, last longer and look like new. With deep foaming penetrating action and a powerful stream that sprays up to five feet, it quickly removes grease, oil, dirt and grime

<https://www.youtube.com/watch?v=iyWSV6SCKlo>



Vibra-Tite

Vibra-Tite 121 Medium Strength Threadlocker

A medium strength anaerobic threadlocker designed for locking threaded fasteners from 1/4" to 3/4" in diameter, that require disassembly with standard hand tools. Exhibits good temperature and solvent resistance.



Vibra-Tite VC-3 Threadmate

Vibra-Tite VC-3 Thread mate is one of the most versatile thread lockers available on the market. An alternative to traditional liquid lockers, which cure to form a hard bond, VC-3, are a blend of resins designed to remain flexible and absorb vibration. This unique difference makes VC-3 coated fasteners truly adjustable, removable, and reusable.



Vibra-Tite 125 Medium Strength Gel Threadlocker

A medium strength anaerobic gel threadlocker designed for locking threaded fasteners from 1/4" to 3/4" in diameter, that require disassembly with standard hand tools. Exhibits good temperature and solvent resistance, no-drip gel formula.

<https://www.youtube.com/watch?v=IWGSZQF9fOk>



Vibra-Tite 131 High Strength Threadlocker

A high strength anaerobic threadlocker designed to permanently lock fasteners up to 1" in diameter. Exhibits good temperature and solvent resistance.



Vibra-Tite 135 High Strength Gel Threadlocker A high

A high strength anaerobic gel threadlocker designed to permanently lock fasteners up to 1" in diameter. Exhibits good temperature and solvent resistance. No-drip gel formulation makes it easy to apply.

<https://www.youtube.com/watch?v=JFuqKGVYtG4>



Vibra-Tite thread Sealant

Vibra-Tite anaerobic thread sealants secure metal pipes and fittings by filling the space between threaded metal parts. Thread sealants prevent leakage caused by tape shredding, vibration loosening, solvent evaporation, and damaged threads. Vibra-Tite products are designed for both low and high-pressure applications. Thread sealants seal to the burst strength of most piping systems.



Vibra-Tite 710 High Temperature Rigid Flange Sealant Gasket Maker

High temperature resistance. Use on rigid, machined metal flanges.



Vibra-Tite 730 Flexible Solvent Resistant Gasket Maker

High viscosity, single component, medium strength, thixotropic, anaerobic sealant which cures when confined between close fitting metal surfaces. Provides an instant low pressure seal. Seals joints between rigid metal faces and flanges such as valve covers and gearbox casings.



Vibra-Tite 732 Flexible Gasket Maker

A tough flexible formed-in- place gasket. Provides an instant low pressure seal. For fuel and water pumps, split crank cases on engines, gearbox covers, engine thermostats, air compressor end caps, chainsaws, lawn mowers etc.



Vibra-Tite 992 Copper RTV Silicone Gasket Maker

A one-part neutral cure silicone sealant with high temperature resistance that cures in the presence of atmospheric moisture to produce a durable and flexible silicone rubber compound.



Vibra-Tite 993 Heavy Body Black Silicone Gasket Maker

A one-part neutral cure silicone sealant with high temperature resistance that cures in the presence of atmospheric moisture to produce a durable and flexible silicone rubber compound.



Vibra-Tite 995 Clear RTV Silicone Sealant

A one-part general purpose acetoxycure silicone sealant that cures in the presence of atmospheric moisture to produce a durable and water proof flexible silicone rubber compound. Resists oil, water, weather, vibration, grease. Seals, bonds, repairs, mends and secures glass, metal, plastics, fabric and vinyl.



Vibra-Tite 996 Red RTV Silicone Gasket Maker

A one-part acetoxy cure silicone sealant with high temperature resistance that cures in the presence of atmospheric moisture to produce a durable and flexible silicone rubber compound.



Vibra-Tite 998 Black RTV Silicone Gasket Maker

A one-part acetoxy cure silicone sealant with high temperature resistance that cures in the presence of atmospheric moisture to produce a durable and flexible silicone rubber compound.



Vibra-Tite 999 Grey RTV Silicone Gasket Maker

A one-part neutral cure silicone sealant with high temperature resistance that cures in the presence of atmospheric moisture to produce a durable and flexible silicone rubber compound.



Vibra-Tite Drive-Grip

Use Drive-Grip and throw away your easy-outs, speed outs, reverse drill bits, and other screw extractors. Drive-Grip is an anti cam-out fluid made of inert liquid metallic grit, a drop of which is placed in the recessed head of a fastener before use. Immediately after application you can use your screwdriver as normal, but will notice a significant reduction in the amount of effort it takes to prevent the driver from slipping. This is because Drive-Grip works by creating additional friction between the fastener head and driver (up to 700% more!).



Vibra-Tite Super Glue

Cyanoacrylates (also known as superglues) are single-part clear instant adhesives that rapidly polymerize at room temperature and develop strength extremely fast (fixture 0 to 60 seconds). They are initiated by moisture on the parts surface or by accelerators.

<https://www.youtube.com/watch?v=g7BgOhuiH1s>



The Finger Saver

The Finger saver keeps your hands away from the impact of the hammer on flogging spanners and from pinch points when using impact wrenches and hydraulic torque equipment. If you want to help your employees with hand safety you should seriously consider this safety product when assessing the risks of any task with potential injury to hand and fingers.

Lengths available: 14.75 in (37.5 cm) and 33.5 in (85.1 cm)

<https://www.youtube.com/watch?v=9ZqxAbm5w1U>



- **Fiber Fix Heat wrap**

FiberFix Heat Wrap is your solution for permanent high-heat repairs. Need to fix and exhaust pipe, water heater or furnace? The Heat Wrap withstands up to 850 degrees Fahrenheit. Dip it in water to activate, wrap it around what you need to fix, and apply heat. In just one hour, you'll have a permanent repair.

Application is designed for wrappable fixes only. Does not apply to flat surfaces or breaks and holes which cannot be wrapped. Measures 70" x 2" x 0.1" includes plastic gloves for protected application

<https://www.youtube.com/watch?v=WXZxYsKQ8Vg>



Regrid Patch

Fast formula cures in less than 10 minutes. As patch cures it turns from gold to white so you have the confidence repair is fully cured and secure. ULTRA STRONG: Hardens like steel, waterproof, UV/ natural light cured. Will bond to most surfaces.

https://www.youtube.com/watch?v=V4px_eDGWaw



Wall Restore

Fiber fix, wall restore kit, allows you to restore the structural integrity of your drywall & everything included, restores original structural integrity in 24 hours, flush finish, weight bearing, no cracking, sandable & paintable, includes 1 bag of fiber fix wall restore, 1 measuring cup, 2 support strips and 1 sandpaper square.

<https://www.youtube.com/watch?v=ersNkWYDs3Y>



- **Taps & Dies**

Taps

Imperial diameter taps:
number 10 to 1 inch
Metric diameter taps: M6 to M24

Dies

Imperial diameter taps:
number 10 to 1 inch
Metric diameter taps: M6 to M24



Drill Bits

Imperial diameter taps: number
number 10 to 1 inch
Metric diameter taps: M6 to M24



- **Rescue Tape**

You can instantly repair leaks on plumbing and hoses, make underwater repairs, use it on electrical wiring or as shrink-wrap, seal and protect hydraulic fittings or other exposes metal connections, make an emergency fan belt, o-ring gasket and so much more!

<https://www.youtube.com/watch?v=qOF2II-6moc>



Pump & Valve Packing

- **Pump & Valve Packing**

High performance packing manufactured from superior materials designed for pumps, valves, rotating & reciprocating equipment

- FDA approved
- Easy to install
- Operates over a wide range of parameters
- Available in a wide range of materials
- Crossplait technique and lubricated styles



- **Pipeline Cleaning Solutions (PIG)**

This pipeline cleaner is designed for pipeline cleaning and batching applications where positive scraping and sealing qualities are required but where no aggressive elements such as wire scraping brushes or abrasive coatings can be tolerated.

Sizes available from: 2- 36 inches



Gloves

- **Framer**

The Framer™ offers open finger dexterity while providing outstanding protection and durability for the rest of your hand. This glove offers the rugged protection of Duraclad® with dexterity only a fingerless glove can offer.

BEST USES

- Framing, Carpentry, Electrical Set-up, Rigging, Trigger Control for Power Tools & Weapons
- #FUG



- **General utility**

The original high performance utility glove. A comfortable, form-fitting glove designed to handle all of your day-to-day tasks.

BEST USES

- Shop, Home, Delivery, Clean-up, Construction, Equipment Operation, Rigging, Yard Work
- #GUG



- **Ironclad stick welder**

Premium Elkskin Stitch Welding glove offers maximum protection from heat shrinkage, sparks and spatter.



- **Knit Cut Level 3**

The Knit Cut 3 is CE EN388 level 3 with a polyurethane palm.

BEST USES

- Tool Pushing, Heavy Construction, & Mining.



- **Knit Cut Level 5**

The Knit Cut 5 is CE EN388 level 5 with a nitrile palm

BEST USES

- Tool Pushing, Heavy Construction, & Mining.



- **Industrial Impact Rigger Insulated Waterproof**

This glove is equipment duraclad reinforced palm for grip and durability.

BEST USES

- Cold Weather Heavy Industrial Environments, Oil Extraction & Refining, Mining, Demolition, Rigging, Wet Environments.



- **Kong Operator**

Operator glove is designed for light duty work on the rig or in the field. Perfect for crane operators, mechanics or supervisors. It's lightweight and breathable with KONG® knuckle protection.



- **Kong Rigger**

The Rigger glove is specifically designed for a rigger. It has dual layer Duraclad® reinforcements on the rope channel of the glove to stand up to long periods of handling rope and cable while rigging. It also offers the same KONG® back of hand protection that the Oil and Gas Industry demands.



- **Kong Original**

The original oil and gas industry glove. Co-developed by the Oil and Gas Industry Safety Committee representing ExxonMobil, ConocoPhillips, Chevron, Halliburton and many other respected industry leaders.



- **Workcrew Ironclad**

The perfect all-around light duty glove in a minimalist black design. A value glove with the function and protection you expect from Ironclad.

BEST USES

- Professional Mechanics, Power Sports, Hand & Power Tool Use.



- **Box Handler**

FEATURES

The Box Handler® glove is a favorite among package delivery professionals around the world, this industrial grip glove features are patented Diamondclad® silicone fused palm for maximum grip.

BEST USES: Ranching, Forestry, HVAC, Search & Rescue, Heavy Equipment Operation, Driving, Construction, Heavy Cable & Wire Handling



- **Dexterity Super Grip**

FEATURES

The KONG® Dexterity Super Grip features Ironclad's patented Diamondclad® silicone fused palm, offering maximum dexterity and non-slip performance on wet and oily surfaces.

BEST USES: Perfect for workers seeking a high dexterity glove with KONG® back of hand protection that the Oil and Gas Industry demands.



- **Heavy Utility**

FEATURES

Ironclad's most popular glove. A long-wearing, tough utility glove with amazing tactile feel and dexterity. Duraclad® Reinforcements Provide maximum durability.

BEST USES: Construction, Material Handling, Demolition, Landscaping, Forestry, Lumberyards, Cable & Wire Work



- **Kong Deck Crew Cut 5**

FEATURES

The KONG® Deck Crew Cut 5 is designed for serious abuse. It features a 4-layer palm for maximum abrasion resistance. It also has our exclusive CT5™ cut resistant material for cut level 5 protection. It's also treated with DuPont™ Teflon® for oil and water resistance. It also offers complete back of hand protection that the Oil and Gas Industry demands.



- **Kong Slip And Oil Resistant**

FEATURES

The KONG Slip & Oil Resistant features exclusive Hybrid Polymer Technology on the entire palm. The special palm channels oil, sludge and mud away from your hand for maximum grip and dexterity on slippery objects. The entire palm is also 100% oil proof meaning no oil can get to the palm of your hand.



- **Modern Water Resistant**

FEATURES

The EXO Modern Water Resistant is a durable medium-duty glove with a water resistant treatment on the palm.”



- **Rigger Cut 5**

FEATURES

The Rigger glove is specifically designed for a rigger. It has dual layer Duraclad® reinforcements on the rope channel of the glove to stand up to long periods of handling rope and cable while rigging. It also offers the same KONG® back of hand protection that the Oil and Gas Industry demands.

BEST USES: Heavy Industrial Environments, Oil Extraction & Refining, Mining, Demolition, Rigging



- **Work Crew Black**

FEATURES

The perfect all-around light duty glove in a minimalist black design. A value glove with the function and protection you expect from Ironclad.

BEST USES: Professional Mechanics, Power Sports, Hand & Power Tool Use.



- **Vibration Impact**

FEATURES

This glove features gel padding in critical palm areas to minimize fatigue and the potential damage associated with power and impact tool use. Unlike foam padding, which compresses and quickly deteriorates, Ironclad's patented gel padding design excels at absorbing vibrations and impact, and lasts through the lifetime of the glove.

BEST USES: Power Tool Use, Vibrating and Impact Tool Use, Heavy Equipment Operation



BBI Tool

- **1/4" DRIVE STANDARD SOCKET MASTER SET-48 PIECE**

S01001 PROFERRED 1/4" DRIVE STANDARD SAE-MT - 6 POINT SOCKET MASTER SET 48 PIECE

- 1/4" Drive SAE 6 Point Standard Socket 5/32", 3/16", 7/32", 1/4", 9/32", 5/16", 11/32", 3/8", 7/16", 1/2", 9/16"
- Bits Set 1: T10, T15, T20, T25, T27, T30, T40, PH1, PH2, PH3
- 1/4" Drive Metric 6 Point Standard Socket 4mm, 4.5mm, 5mm, 5.5mm, 6mm, 7mm, 8mm, 9mm, 10mm, 11mm, 12mm, 13mm Bits Set 2: 3/16, 7/32, 1/4, S1, S2, H3, H4, H5, H6
- 1/4" Drive Pear Ratchet Handle 72 Teeth 4.5" Hex Adapter
- 1/4" Drive Extension Bar 2", 6" Ratcheting Screwdriver
- 1/4" Drive Universal Joint



- **3/8" DRIVE STANDARD SOCKET MASTER SET-37 PIECE**

S01002 PROFERRED 3/8" DRIVE STANDARD SAE-MT - 6 SOCKET MASTER SET 37 PIECE

- 3/8" Drive SAE 6 Point Standard Socket 1/4", 5/16", 3/8", 7/16", 1/2", 9/16", 5/8", 11/16", 3/4", 13/16", 7/8", 15/16", 1" 3/8" Drive Flex
- Handle (Breaker Bar) 10"
- 3/8" Drive Metric 6 Point Standard Socket 6mm, 7mm, 8mm, 9mm, 10mm, 11mm, 12mm, 13mm, 14mm, 15mm, 16mm, 17mm, 18mm, 19mm Spark plug Sockets 5/8", 13/16"
- 3/8" Drive Pear Ratchet Handle 72 Teeth 8" 3/8" F - 1/4" M Adapter
- 3/8" Drive Extension Bar 3", 6", 10" 1/2" F - 3/8" M 3 way Adapter
- 3/8" Drive Universal Joint



- **1/2" DRIVE STANDARD SOCKET MASTER SET-21 PIECE**

S01003 PROFERRED 1/2" DRIVE STANDARD SAE - 12 POINT SOCKET MASTER SET 21 PIECE

- 1/2" Drive SAE 12 Point Standard Socket 3/8", 7/16", 1/2", 9/16", 5/8", 11/16", 3/4", 13/16", 7/8", 15/16", 1", 1-1/16", 1-1/8",
- 1-3/16", 1-1/4" 1/2" Drive Universal Joint
- 1/2" Drive Pear Ratchet Handle 60 Teeth 10" 1/2" Drive Flex Handle (Breaker Bar) 15"
- 1/2" Drive Extension Bar 5", 10" 3/8" F - 1/2" M 3 way Adapter



- **3/4" DRIVE STANDARD SOCKET MASTER SET-15 PIECE**

S01004 PROFERRED 3/4" DRIVE STANDARD SAE - 12 POINT SOCKET MASTER SET 15 PIECE

- 3/4" Drive SAE 12 Point Standard Socket 7/8", 15/16", 1", 1-1/8", 1-1/4", 1-7/16", 1-1/2", 1-5/8", 1-3/4", 2" 3/4" Drive Universal Joint
- 3/4" Drive Pear Ratchet Handle 24 Teeth 20" 3/4" Drive Flex Handle (Breaker Bar) 20"
- 3/4" Drive Extension Bar 4", 8"



- **1/2" DRIVE SAE 12 POINT STANDARD CHROME / DEEP SOCKETS**

Standard Chrome Socket 3/8 to 1-1/4"
Deep Chrome Socket 5/16 to 1".



- **1/2" DRIVE METRIC 12 POINT STANDARD CHROME / DEEP CHROME SOCKETS**

Standard Chrome Socket 10mm to 24mm



- **3/4" DRIVE SAE 6 POINT DEEP IMPACT SOCKETS**

Deep Impact Socket 1 to 1-1/2"
Metric Deep Impact Socket 26mm to 38mm.

1/4" DRIVE TINY BONE 5 IN 1 RATCHET HANDLE

S39001 Preferred 1/4" Drive Tiny Bone 5 in 1 Ratchet Handle



- **SOCKET ACCESSORIES & RATCHETS**

- 1/4" Drive Pear Ratchet Handle 72 Teeth 4.5"
- 3/8" Drive Pear Ratchet Handle 72 Teeth 8"
- 1/2" Drive Pear Ratchet Handle 60 Teeth 10"
- 3/8" Drive Flex Handle (Breaker Bar) 10"
- 1/2" Drive Flex Handle (Breaker Bar) 15"
- 3/8" Drive Cobra Flex Handle (Breaker Bar) 8"
- 1/2" Drive Cobra Flex Handle (Breaker Bar) 10"
- 1/4" Drive Extension Bar 2"
- 1/4" Drive Extension Bar 4"
- 1/4" Drive Extension Bar 6"
- 3/8" Drive Extension Bar 3"
- 3/8" Drive Extension Bar 6"
- 3/8" Drive Extension Bar 10"
- 1/2" Drive Extension Bar 5"
- 1/2" Drive Extension Bar 10"
- 1/2" Drive Extension Bar 20"
- 3/8" Drive Impact Extension Bar 3"
- 3/8" Drive Impact Extension Bar 6"
- 1/2" Drive Impact Extension Bar 5"
- 1/2" Drive Impact Extension Bar 10"
- 1/4" Drive Universal Joint
- 3/8" Drive Universal Joint
- 1/2" Drive Universal Joint
- 3/8" Impact Universal Joint
- 1/2" Impact Universal Joint
- 3/8" F - 1/2" M Adapter
- 1/2" F - 3/8" M Adapter
- 1/2" F - 3/4" M Adapter
- 3/8" F - 1/4" M Adapter



- **AVIATION SNIP**

STRAIGHT CUT, LEFT CUT, RIGHT CUT, NOTCH CUT,
LONG CUT

Features:

- Cuts up 1.2mm cold rolled steel or 0.7mm AISI-304 stainless steel.
- Meets or exceeds industry specification ANSI/ASME B107.16-1998.
- Quick and simple spring-free automatic latch design (one hand release) offers additional safety.
- Serrated blades, induction hardened.
- Drop forged Chrome-Molybdenum Alloy steel blades.



- **HEAVY DUTY ADJUSTABLE WRENCH
INDUSTRIAL BLACK PHOSPHATE**

LENGTH: 6", 8", 10", 12", 15", 18", and 24"

Features:

- Raised head design prevents unintended change to the opening width of jaw while wrench is laid flat, available in 6"-15".
- 15 degree offset allows for ease of use in tight working areas.
- Thin jaw improves access in tight spaces. Wider grip opening design allows for wider range of fastener sizes.



- **HEAVY DUTY ADJUSTABLE WRENCH
CHROME FINISH**

LENGTH: 4", 6", 8", 10", 12", 15", 18", and 24"

Features:

- Raised head design prevents unintended change to the opening width of jaw while wrench is laid flat, available in 6"-15".
- 15 degree offset allows for ease of use in tight working areas.
- Thin jaw improves access in tight spaces.
- Wider grip opening design allows for wider range of fastener sizes.



- **TIGER'S PAW™ ADJUSTABLE WRENCH WITH PADDED HANDLE**

LENGTH: 6", 8", 10", and 12"

Features:

- Head triangle increased hardness - HRC 3 degrees.
- The hole design reduces overall weight by 10%, eliminating physical stress.
- Jaw teeth protects the corners of the nuts, while reducing slippage at the same time.
- Anti-slip TPR material ensures a comfortable grip.



- **QUICK SNAP ADJUSTABLE WRENCH**

LENGTH: 8"

Features:

- Greater jaw capacity
- Quick release jaw allows for fast setting with one easy pull.
- Dual teeth fits SAE and Metric fastener specifications.
- Micro-adjusting the movable pad allows the knurl to adjust the jaw opening. Convenient and 5-times faster operation.



- **MINING ADJUSTABLE WRENCH WITH HAMMER**

LENGTH: 12"

Features:

- 5 tools in 1: adjustable wrench, pipe wrench, hammer, 7/8" ratcheting box end, 1/2" drive ratcheting wrench
- Rust resistant SAE 6140 Steel.
- Fully heat treated, hot forged handle.
- Ergonomically designed for a comfortable hand grip.
- Wrench comes with a dual hide holster belt clip with chain for additional tool attachments.



- **PIPE WRENCH**

Length: 14" and 18"

Features:

- Forged steel.
- Long weighted handle for stability and leverage.
- 14" can take a 2" diameter pipe.
- 18" can take a 2-1/2" diameter pipe.



- **HIGH LEVERAGE HEAVY DUTY LINEMAN'S PLIERS, TPR GRIP**

LENGTH: 8.5" & 9.5"

Features:

- Superior diamond teeth design for greater gripping ability.
- Special high leverage design for increased cutting power.
- Hardened cutting edge cuts various types of wires.
- Ergonomic: Anti-fatigue comfort grip.



- **STRAIGHT JAW GROOVE JOINT PLIERS, COATED GRIP**

LENGTH: 8", 10", 12", 16" & 20"

Features:

- Wide range of jaw adjustments and machined jaw grooves.
- Lay-on slip-joint.
- Non-slip cushion grips.



- **DIAGONAL CUTTING PLIERS, TPR GRIP**

LENGTH: 6"

Features:

- Hardened cutting edge cuts various types of wires and extends cutting edge life cycle.
- Ergonomic: Anti-fatigue comfort grip.



- **HIGH LEVERAGE HEAVY DUTY DIAGONAL PLIERS, TPR GRIP**

LENGTH: 7", 8"

Features

- Special high leverage design for increased cutting power.
- Hardened cutting edge cuts various types of wires and extends cutting edge life cycle.
- Ergonomic: Anti-fatigue comfort grip.



- **SIDE CUTTING LONG NOSE PLIERS, TPR GRIP**

LENGTH: 6", 7"

Features:

- Superior diamond teeth design allows for greater gripping ability.
- Hardened cutting edge cuts various types of wires.
- Ergonomic: Anti-fatigue comfort grip.



- **LONE NOSE PLIERS WITHOUT CUTTER, TPR GRIP**

LENGTH: 6"

Features:

- Special design improves access in tight and narrow spaces.
- Superior diamond teeth design allows greater gripping ability.
- Ergonomic: Anti-fatigue comfort grip.



- **ALL PURPOSE 7 IN 1 ANGLE NOSE PLIERS**

LENGTH: 8"

Features:

- Crimps & strips crimps 10-22 AWG terminals and connectors.
- Strips 10-14 AWG solid and 12-16 AWG wire.
- Bolt cutter #6, #8.
- Diamond tooth design allows for greater gripping ability.
- Induction-hardened cutting edges for hard & soft wire cutting.
- Angled head design allows for overall greater flexibility.
- Thumb lock: Locking mechanism on grip handles.
- Ergonomic: Anti-fatigue comfort grip.



- **CURVED JAW LOCKING PLIERS**

Features:

- Cr-Mo steel jaw, Cr-Mo steel handle.
- Body heat treated.
- Welding, nickel-plated.
- Easy release grip.
- Knurled torque adjustment screw.



- **LOCKING C-CLAMP**

Features:

- Constructed from high grade, chrome vanadium steel, providing superior strength and durability.
- Hardened teeth for gripping power and longevity.
- Curved jaw design allows for a variety of material applications and shapes.
- Quick adjust and release.
- Nickel plated for maximum corrosion resistance.



- **LONG NOSE JAW LOCKING PLIERS**

Features:

- Cr-Mo steel jaw, Cr-Mo steel handle.
- Body heat treated.
- Welding, nickel-plated.
- Easy release grip.
- Knurled torque adjustment screw.
- With wire cutter.



- **RETAINING SNAP RING PLIERS**

Features:

- Internal & external adjustable.
- Spring loaded handle.
- Intechangable tips, 45, 90 and straight-easy tip change set screw.
- Extra supply of tips included.



- **ACETATE CUSHION GRIP SCREWDRIVER**

Features:

- Treated tip ensures perfect fit.
- Cellulose acetate material provides highest performance.
- Color coded handle for visual identification of Slotted and Phillips.
- TPV cushion grip provides slip resistance to chemical, oil and most solvents.

SLOTTED: 3/16"x4", 3/16"x6", 1/4"x4", 1/4"x6", 1/4"x8"
PHILLIPS: #1x4", #2x4", #2x6", #2x8", #3x6", #3x8"



- **INSULATED (1000V) SCREWDRIVER**

Features:

- Patented dual layer design provides greater protection against electric shock.
- Dual material PP & TPV cushion grip provides slip resistance to chemical, oil and most solvents.

SLOTTED: 3/32"x3", 1/8"x4", 7/32"x5", 1/4"x6", 5/16"x7"
PHILLIPS: #0x2-3/8", #1x3-3/16", #2x4", #3x6"



- **6 PIECE ACETATE CUSHION GRIP SCREWDRIVER SET**

Features:

- Treated tip ensures perfect fit.
- Cellulose acetate material provides highest performance.
- Color coded handle for visual identification of Slotted and Phillips.
- TPV cushion grip provides slip resistance to chemical, oil and most solvents.
- Length: 3/16"x3", 3/16"x6", 1/4"x4", 5/16"x6", Phillips: No.1x3", No.2x4"



- **4 PIECE INSULATED (1000V) SCREWDRIVER SET**

Features:

- Patented dual layer design provides greater protection against electric shock.
- Dual material PP & TPV cushion grip provides slip resistance to chemical, oil and most solvents.
- Length: 1/4"x6", 5/16"x7", Phillips: No. 1x3-3/16", No. 2X4"



- **5 IN 1 STUBBY BIT DRIVE SET**

Features:

- High torque coefficient will prevent the screwdriver from breaking when the tool is overstressed.
- Cellulose acetate material provides highest performance.
- TPV cushion grip provides slip resistance to chemical, oil and most solvents.
- Stubby Bit Holder Driver, Phillips Bits: #1, #2, Slotted Bits: 3/16", 1/4", Nut Driver: 1/4"



• 9 IN 1 REGULAR BIT DRIVE SET

Features:

- High torque coefficient will prevent the screwdriver from breaking when the tool is overstressed.
- Cellulose acetate material provides highest performance.
- TPV cushion grip provides slip resistance to chemical, oil and most solvents.
- Regular Bit Holder Driver, Phillips Bits: #1, #2, Slotted Bits: 3/16", 1/4", TORX® Bits: T15, T20, Nut Drivers: 1/4", 5/16", 3/8"



• 14 IN 1 PRECISION BIT DRIVE SET

Features:

- Bit holder driver's locking system holds the blade at desired length during use.
- Phillips
- Slotted
- TORX®
- Hex
- Phillips Bits: #000, #00, #0, Slotted Bits: 1/16", 5/64", 1/8", TORX® Bits: T5, T6, T7, T8, Hex Bits: 5/64", 3/32", 1/8", 5/32



• 19 IN 1 RATCHETING SCREWDRIVER DRIVE SET

Features

- Torque the torque is above 390lbs-in.
- Ratchet: The ratchet permits high-speed action with grip adjustments and can be combined with popular driver ends.
- The perfect handle design allows the handle to disperse the pressure evenly when applying force.

Description

- T29004 PROFERRED 19 IN 1 RATCHETING SCREWDRIVER DRIVE SET Ratcheting Handle with Storage, Phillips Bits: #1, #2, #3, Slotted Bits: 3/16", 1/4", 5/16", TORX® Bits: T15, T20, T25, T30,
- Square Bits: #1, #2, Hex Bits: 1/8", 5/32", 3/16", 1/4", Nut Drivers: 1/4", 5/16", 7/16"



- **8 PIECE T-HANDLE HEX KEY SET SAE 5/64"-3/8"**

Features

- Ergonomic smooth shape.
- Size identification molded handle.
- Handles proportioned to size.
- Molded black soft t-grip handle for lasting comfort.
- Through hardened durability.
- Chrome vanadium steel (CR-V).
- SAE open stock Preferred T-Handle Hex Key 5/64 to 3/8.



- **8 PIECE T-HANDLE HEX KEY SET METRIC 2MM-10MM**

Features:

- Ergonomic smooth shape.
- Size identification molded handle.
- Handles proportioned to size.
- Molded black soft t-grip handle for lasting comfort.
- Through hardened durability.
- Chrome vanadium steel (CR-V).
- Metric open stock: 2.0mm to 10.0mm



- **LONG ARM BALL POINT HEX KEY SET**

Features:

- Integration of ergonomic double-layer holder: Holder marked for easy
- Identification of the dimensions.
- Unique rotating function.
- Up to 25° angle entry.
- SAE: 0.05, 1/16, 5/64, 3/32, 7/64, 1/8, 9/64,
- 5/32, 3/16, 7/32, 1/4, 5/16, 3/8 INCH
- METRIC: 1.5, 2, 2.5, 3, 4, 4.5, 5, 5.5, 6, 7, 8, 10 MM



- **STEEL STAPLE GUN TACKER / HAMMER TACKER**

Features:

- Bottom loading magazine.
- Durable all-steel construction.
- Ergonomic handle grip.



- **FLEX RATCHETING WRENCH**

Features:

- Torque capability is 30% greater than ANSI industrial standard.
- 72 teeth ratcheting box end needs only 5 degrees swing arc versus 30 degrees for standard box end wrenches.
- Durability quality chrome vanadium steel. Precision heat treated for maximum strength.
- Flex head tilts up to 180 degrees.
- SAE: 1/4, 5/16, 3/8, 7/16, 1/2, 9/16, 5/8, 11/16, 3/4 INCH
- METRIC: 8, 9, 10, 11, 12, 13, 14, 15, 16, 17, 18, 19 MM



- **COMBINATION WRENCHES**

Features:

- Precision: manufactured to ANSI & DIN industrial standards.
- Durability: quality chrome vanadium steel. • Precision heat treated and drop forged for maximum strength.
- Visibility: larger marking for easy size identification.

Combination Wrench Set

1/4" - 3/4"

3/8" - 1 -1/4"

1 5/16" - 1-1/2"

Imperial Wrench Sizes From: 1/4" to 1-1/2"

Metric Wrench Sizes From: 8mm to 22mm.



- **CALIFORNIA FRAMING/RIPPING CLAW CURVED CLAW/DRYWALL/BALL PEEN HAMMERS**

Features:

- Head material 1055 medium carbon steel.
- Forged ball peen hammer head (T49073/T49074)
- Natural hickory handle
- Length: 12oz, 16oz, 20oz & 21oz



- **3 LB ONE PIECE FORGED CLUB HAMMER**

Features:

- Head material 1055 medium carbon steel.
- Head finish metallic finish, polished striking face.
- Designed to reduce vibration.
- Solid steel Head design creates less vibration.
- Double injection grip provides great comfort.



- **16 oz RUBBER MALLET**

Features:

- Head material black natural rubber.
- Natural hickory handle.



- **20 PIECE SLOTTED DRIVE BITS**

Features:

- S2 steel.
- Durable plastic storage case.
- SLOTTED SIZE: 4F-5Rx1" TO 20F-22Rx1-1/4"



- **PHILLIPS DRIVE BITS**

Features:

- S2 modified steel.
- Rc. 58-62 heat treated.
- German grade steel.

Lengths:

- 1", 1/4" Hex Shank
- PH2, 1", 1/4" Hex Shank
- PH3, 1", 1/4" Hex Shank
- PH4, 1", 1/4" Hex-Bull Nose Shank
- PH1, 2", 1/4" Hex Shank
- PH2, 2", 1/4" Hex Shank
- PH3, 2", 1/4" Hex Shank
- #1 x 6" Phillips Bit
- #2 x 6" Phillips Bit
- #3 x 6" Phillips Bit
- #2 x 1" Phillips Bit / Stopper Collar



- **25'/8M TAPE MEASURES**

Features:

- Tape Hook (end tip) made of stainless steel-more durable.
- Inch on top-1/8" increments on bottom.
- 16" marks in bold & blocked for framing studs.
- Black diamond placed for drywall installers to locate stud centers.
- Hi-impact ABS housing with non slip TPR grip.
- Nylon coated blade with magnetic tip.
- Dual side printed.
- Metric on top and bottom.



- **RETRACTABLE UTILITY KNIFE /
12 PIECES UTILITY BLADES**

Features:

- Blade change: quick release for easy exchange of blades.
- Pop up blade dispenser release button allows instant blade change. No tools required.
- SK2 blades: 5 additional high carbon SK2 blades inside the pop up blade dispenser.
- Thermoplastic rubber (TPR) soft grip offers thumb rest and comfortable use with less slippage.



- **HACKSAW FRAME**

Features:

- Professional hacksaw frame.
- Fully adjustable tension mechanism.
- Holds blade up to 37,500 PSI.
- Single thumb-dial adjustable tension mechanism for easy adjustment.
- Pro-quick release lever allows for fast blade change.
- Ergonomic handle designed with front thumb soft grip to give better control 45 and 90 degree cutting angles.
- Preferred Hacksaw Frame 12"



- **HACKSAW BLADE**

Features

- 24T bi-metal steel blade.
- Cuts material 3.2mm-6.4mm, 1/8"-1/4".
- Suitable for conduit, heavy sheet metal.
- 24T HSS Bi-Metal Hacksaw Blade



- **HAND & TOOL WIPES CANISTER / SINGLE PACK**

Features:

- Dual cleaning surfaces textured and non-scratching cleaning surface.
- Lint free sturdy wipes scrub without tearing.
- No VOCs safe for the environment.
- 82 9"x12" wipes in each canister.
- No water needed
- Cuts grease, grime, oil dirt, lube and mastic but safe on hands.



- **SHOP TOWELS**

Features:

- For Staining, cleaning tools, glass & mirror, grease & oil.
- High absorbency.
- Large 10"x12" towel.

