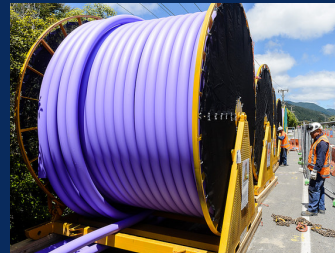


PRODUCT CATALOGUE

Issue 41 -September
2018

(Superceeds all previous Issues of this Product Catalogue)



BUILDING CODE - DURABILITY

BUILDING CODE - DURABILITY

The Building Code places the responsibility on manufacturers to clearly state:

- (a) the conditions for which products are or are not suitable;
- (b) the durability and frequency of maintenance for the products continued acceptable performance.

Specifically, the Building Code categorises durability in the following way:

Clause B2.3.1

Building elements must, with only normal maintenance, continue to satisfy the performance requirements of this code for the lesser of the specified intended life of the building, if stated, or:

- (a) The life of the building, being not less than 50 years, if:
 - (i) Those building elements (including floors, walls, and fixings) provide structural stability to the building, or
 - (ii) Those building elements are difficult to access or replace, or
 - (iii) Failure of those building elements to comply with the Building Code would go undetected during both normal use and maintenance of the building.
- (b) For other fixings of the building envelope and attached structures, the building envelope, lining supports and other building elements having moderate ease of access but which are difficult to replace: 15 years.
- (c) For linings, renewable protective coatings, fittings and other building elements to which there is ready access: 5 years.

Iplex Pipelines have adopted the following clauses for products such as the pipe and fittings that we manufacture.

Durability

The pipe or fitting will have a service life that is compatible with other pipe and fittings manufactured to the relevant AS/NZS Standard and any other recognised Standard if appropriate.

Thus correctly designed and installed drainage or pressure systems using Iplex Pipelines' pipes or fittings will satisfy the performance requirements of both N.Z.B.C. Clause B2.3.1 (a) (50 years - services which are difficult to access or replace) and N.Z.B.C. Clause B2.3.1 (b) (15 years - services to which access is moderate but are difficult to replace).

Clauses (a) and (b) cover the majority of applications for products of our own manufacture, with the exception of rainwater pipes used above ground which satisfy the requirements of N.Z.B.C. Clause B 2.3 (c). (5 years – services which have easy access)

UNSUITABLE APPLICATIONS

1. Iplex Pipelines PVC pressure pipes should not be used:

- (i) as a conductor for earthing electrical appliances
- (ii) with aromatic and chlorinated hydrocarbons, ketones, esters and ethers
Refer to 'A Guide to Chemical Resistance of Thermoplastic and Elastomeric Materials' - available from Iplex Pipelines
- (iii) at continuous service temperature above 60°C (PVC-U) or 55°C (PVC-M) or 50°C (PVC-O)
- (iv) where provision for pressure derating has not been made above 35°C
- (v) with compressed air
- (vi) without adequate support to the pipe both in above ground and below ground applications
- (vii) without adequate thrust support
- (viii) where depth of cover is less than
 - 300mm where pipeline is not subject to vehicular loading
 - 450mm where pipeline is subject to vehicular loading not in roadways
 - 600mm where pipeline is subject to vehicular loading in sealed roadways
 - 750mm where pipeline is subject to vehicular loading in unsealed roadways
 - 750mm where pipeline is subject to construction equipment loading
- (ix) where working pressure + surge/cyclic pressure exceeds the nominated pressure/performance rating of the pipe
- (x) when exposed to direct sunlight above ground for long term applications, without protection. This protection may include pale coloured UV resistant paint systems or physical shading
- (xi) where service connections are directly tapped into the pipe wall

2. Iplex Pipelines polyethylene pipes are not suitable for use in the following applications:

- (i) as a conductor for earthing electrical appliances
- (ii) all fire-rated applications
- (iii) exposure to direct sunlight in service (except black pipe)
- (iv) continuous service above 60°C internal or external temperature.
- (v) pressure pipes in continuous services up to 60°C internal or external temperature, where provision for pressure derating has not been made
- (vi) carrying chemicals outside the range advised by Iplex Pipelines
- (vii) without adequate support to the pipe in above ground and below ground applications
- (viii) where working pressure + surge/cyclic pressure exceeds the nominated pressure/performance rating of the pipe
- (ix) where incorrect depth of cover is applied

3. Iplex Pipelines PVC Drain, Waste & Vent pipes should not be used:

- (i) with aromatic and chlorinated hydrocarbons, ketones, esters and ethers
- (ii) for pumped pressure applications
- (iii) at continuous service temperatures above 60°C or for intermittent discharges of liquid above 75°C
- (iv) without adequate support to the pipe both in above ground and below ground applications
- (v) without adequate thrust support
- (vi) in below ground applications where depth of cover is less than:
 - 300mm where pipeline is not subject to vehicular loading
 - 450mm where pipeline is subject to vehicular loading not in roadways
 - 600mm where pipeline is subject to vehicular loading in sealed roadways
 - 750mm where pipeline is subject to vehicular loading in unsealed roadways
 - 750mm where pipeline is subject to construction equipment loading
- (vii) when exposed to direct sunlight above ground for long term applications, without protection. This protection may include pale coloured U.V. resistant paint systems or physical shading.

DEFINITION OF TERMS USED

SOE	Socketed One End (For Solvent Weld Jointing)
Z	Z Joint
RRJ	Rubber Ring Joint
SCJ	Solvent Cement Joint
COE	Coupler One End
PE	Plain End
PVC-U	Unplasticised Polyvinylchloride
PVC-M	Modified Polyvinylchloride
PVC-O	Oriented Polyvinylchloride
DWV	Drain Waste and Vent
DN	Nominal Diameter (mm)
PN	Nominal Maximum Working Pressure (Bar)
SDR	Standard Dimension Ratio = $\frac{\text{Maximum Mean Outside Diameter}}{\text{Minimum Wall Thickness}}$
PE80	Medium Density Polyethylene (MDPE) to AS/NZS 4130
PE100	High Performance Polyethylene (HPPE) to AS/NZS 4130
SN	Minimum Pipe Stiffness Class as defined in AS/NZS1260
M&F	Male & Female
F&F	Female & Female

WORKING PRESSURE CONVERSION TABLE						
PVC						
CLASS	P.S.I	M/HEAD	MATERIAL	KPA	BAR	PN
B	87	60	PVC-U, PVC-M & PVC-O	600	6	6
C	130	90	PVC-U & PVC-M	900	9	9
	145	100	PVC-O	1000	10	10
D	173	120	PVC-U & PVC-M	1200	12	12
	181	125	PVC-O	1250	12.5	12.5
E	217	150	PVC-U & PVC-M	1500	15	15
	232	160	PVC-U, PVC-M & PVC-O	1600	16	16
F	260	180	PVC-U	1800	18	18
	290	200	PVC-M	2000	20	20
PE						
	46	32	PE80 & PE100	320	3.2	3.2
	58	40	PE80 & PE100	400	4	4
	91	63	PE80 & PE100	630	6.3	6.3
	116	80	PE80 & PE100	800	8	8
	145	100	PE80 & PE100	1000	10	10
	181	125	PE80 & PE100	1250	12.5	12.5
	232	160	PE100	1600	16	16
	290	200	PE100	2000	20	20
	362	250	PE100	2500	25	25

CONTENTS

Drain Waste & Vent Systems	1
Novadrain Drain Waste & Vent Pipe	2
Restrainer	3
Novadrain Drain Waste & Vent Fittings SCJ	4
Novadrain Drain Waste & Vent Fittings RRJ	10
Uni-Trap Waste Traps	13
Pipe Clips	13
Smartpan, Smartwaste, Smarttrap, Smartile	14
Stormwater Systems & Rooding Products	15
Superstorm Stormwater Duct	16
Aquacell Stormwater System	16
Nexus Hi-Way	16
Nexus Hi-Way with Filter Sock	16
Nexus with Filter Sock	16
Novaflo with Filter Sock	16
Stormfit Stormwater Fittings	17
Pressure Systems	19
Apollo PVC-O Pressure Pipe	20
Novakey PVC-U Pressure Pipe	21
White Rhino PVC-M Pressure Pipe	22
Blue Rhino PVC-M Pressure Pipe	23
Novakey PVC-U Pressure Fittings	24
Repair Clamps	28
BlueLine MDPE Pressure Pipe	29
Plasson Series 1 Fittings	29
Plasson Compression Fittings	31
Plasson Threaded Fittings	35
Plasson Accessories	36
Plasson Polypropylene Valves	36
Polyethylene Valve Boxes	36
Poliplex 100 HPPE Pressure Pipe	37
Agricultural Systems	39
Alkathene Low Density Polyethylene Pipe	40
Irripod Low Density Polyethylene Pipe	40
Effluent PVC-U Pressure Pipe	40
Effluent Polyethylene Pipe	40
Novatube Horticultural Lateral Tube	41
Greenline Polyethylene Pipe	41
Redline Polyethylene Pipe	41
Rural Black Polyethylene Pipe	42
Blackline PN16 Polyethylene Pipe	42
Blackline HP PN20/PN25 Polyethylene Pipe	43
Blackline HP Ductile Iron Fittings	43
Nexusflo & Nexuscoil Land Drainage Pipe	44
Novaflo & Novacoil Land Drainage Pipe	44
Nexus/Novaflo Fittings	45
Nexus Culvert PE Culvert Pipe	46
Farmtuff PVC-U Culvert Pipe	46

Rainwater Systems

47

PVC-U Downpipe System	48
-----------------------------	----

Electrical, Telecommunications Duct and Gas Pipe

49

Electrical PVC Cable Duct & Fittings	50
Electrical Conduit	50
Solar Conduit	50
Electrical Polyethylene Cable Duct	50
Telecommunications Duct & Fittings	51
Poligas Gas Pipe	52


Miscellaneous

53

Novakey Solvent Cement (Non Pressure & Pressure)	54
Novalube Pipe Lubricant	54
Med Lube	54
Novakey Cleaner & Primer	54

ORDERING GUIDE

	ORDER CODE	SIZE mm	CTN QTY	PRICE \$
	101.40.88W	40 x 88°	35 x 5	2.28
Code Prefix	101	Size	Degree	Price excl. G.S.T
Size (mm)	40		No. of Units per Bag	No. of Bags per Carton
Degree	88			
	W			
	Inspection Window			



INSPECTION BEND

DRAIN, WASTE & VENT SYSTEMS

**NOVADRAIN
RESTRAIN
SMARTPAN
SMARTWASTE
SMARTILE
UNI-TRAP**

PVC Drain Waste and Vent Pipe NON-PRESSURE APPLICATIONS ONLY AS/NZS 1260

NOVADRAIN PVC-U DWV PIPE SOE & PE

ORDER CODE	SIZE mm x LENGTH m	PACK & BDLE QTY
100.32.6 SOE	32 x 6	240/10*
100.40.6 SOE	40 x 6	180/10*
100.50.6 SOE	50 x 6	150/5*
100.65.6 SOE	65 x 6	102
100.80.4 PE	80 x 4	88
100.80.6 SOE	80 x 6	88

*These bundle sizes are the minimum order quantity



SOLVENT CEMENT JOINT

NOVADRAIN 4000 PVC-U DWV PIPE SOE & Z JOINT SN4

ORDER CODE	SIZE mm x LENGTH m	PACK QTY
100SN4.150.6 SOE	150 x 6	28
Z100SN4.150.4	150 x 4	28
Z100SN4.150.6	150 x 6	28
Z100SN4.175.6	175 x 6	20
Z100SN4.225.6	225 x 6	12
Z100SN4.300.6	300 x 6	6
Z100SN4.375.6	375 x 6	6
Z100SN4.475.6	475 x 6	2
Z100SN4.500.6	500 x 6	2
Z100SN4.600.6	600 x 6	2



SOLVENT CEMENT & RUBBER RING JOINT

NOVADRAIN 6000 PVC-U DWV PIPE SOE & RRJ SN6

ORDER CODE	SIZE mm x LENGTH m	PACK QTY
100SN6.100.6 SOE	100 x 6	67
100SN6.100.6 RRJ	100 x 6	67



SOLVENT CEMENT & RUBBER RING JOINT

NOVADRAIN 8000 PVC-U DWV PIPE Z JOINT SN8

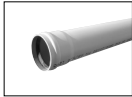
ORDER CODE	SIZE mm x LENGTH m	PACK QTY
Z100SN8.150.4	150 x 4	28
Z100SN8.150.6	150 x 6	28
Z100SN8.175.6	175 x 6	20
Z100SN8.225.6	225 x 6	12
Z100SN8.300.6	300 x 6	6
Z100SN8.375.6	375 x 6	6
Z100SN8.475.6	475 x 6	2
Z100SN8.500.6	500 x 6	2
Z100SN8.600.6	600 x 6	2



RUBBER RING JOINT

NOVADRAIN 10000 PVC-U DWV PIPE RRJ SN10

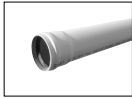
ORDER CODE	SIZE mm x LENGTH m	PACK QTY
100SN10.100.6 RRJ	100 x 6	67



RUBBER RING JOINT

NOVADRAIN 16000 PVC-U DWV PIPE RRJ & Z JOINT SN16

ORDER CODE	SIZE mm x LENGTH m	PACK QTY
100SN16.100.6 RRJ	100 x 6	67
Z100SN16.150.3	150 x 3	28
Z100SN16.150.4	150 x 4	28
Z100SN16.150.6	150 x 6	28
Z100SN16.175.6	175 x 6	20
Z100SN16.225.6	225 x 6	12
Z100SN16.300.6	300 x 6	6
Z100SN16.375.6	375 x 6	6
Z100SN16.475.6	475 x 6	2



RUBBER RING JOINT

PVC-U RESTRAIN NON-PRESSURE APPLICATIONS ONLY AS/NZS 1260 (For Trenchless Installation)

RESTRAIN 16000 PVC-U THREADED JOINT DWV PIPE SN16

ORDER CODE	SIZE mm x LENGTH m	PACK QTY
RESTRAIN100.1	100 x 1	1
RESTRAIN100.2	100 x 2	1
RESTRAIN100.3	100 x 3	1
RESTRAIN100.4	100 x 4	1
RESTRAIN100.6	100 x 6	1
RESTRAIN150.1	150 x 1	1
RESTRAIN150.2	150 x 2	1
RESTRAIN150.3	150 x 3	1
RESTRAIN150.4	150 x 4	1
RESTRAIN150.6	150 x 6	1
RESTRAIN225.1	225 x 1	1
RESTRAIN225.2	225 x 2	1
RESTRAIN225.3	225 x 3	1
RESTRAIN300.1	300 x 1	1
RESTRAIN300.2	300 x 2	1
RESTRAIN300.3	300 x 3	1



THREADED JOINT

All Restrain products are generally made to order.

NOVADRAIN PVC-U Drain Waste and Vent Fittings SCJ NON-PRESSURE

Note: The Bag Quantity shown is the minimum order quantity for 32mm, 40mm & 50mm DWV fittings

ORDER CODE	SIZE mm	CTN / BAG QTY
101.32.15	32 x 15°	200 / 10
101.32.45	32 x 45°	160 / 5
101.32.88	32 x 88°	120 / 5
101.40.15	40 x 15°	60 / 5
101.40.45	40 x 45°	100 / 10
101.40.60	40 x 60°	200 / 5
101.40.88	40 x 88°	80 / 10
101.50.15	50 x 15°	35 / 5
101.50.45	50 x 45°	55 / 5
101.50.88	50 x 88°	40 / 10
101.65.15	65 x 15°	140
101.65.45	65 x 45°	120
101.65.88	65 x 88°	70
101.80.15	80 x 15°	70
101.80.45	80 x 45°	70
101.80.88	80 x 88°	40
101.100.5	100 x 5°	42
101.100.15	100 x 15°	35
101.100.30	100 x 30°	35
101.100.45	100 x 45°	32
101.100.60	100 x 60°	27
101.100.88	100 x 88°	19
101.150.15	150 x 15°	12
101.150.45	150 x 45°	9
101.150.88	150 x 88°	5
101.150A	150 x 0-45°	10



PLAIN BEND



ADJUSTABLE BEND



PLAIN BEND M & F

171.40.42	40 x 42°	60 / 10
171.40.88	40 x 88°	80 / 10
171.50.42	50 x 42°	50 / 10
171.50.88	50 x 88°	40 / 10
171.65.42	65 x 42°	85
171.80.42	80 x 42°	60
171.80.88	80 x 88°	50
171.100.5	100 x 5°	45
171.100.11	100 x 11°	36
171.100.15	100 x 15°	35
171.100.22	100 x 22°	28
171.100.30	100 x 30°	34
171.100.42	100 x 42°	30
171.100.60	100 x 60°	27
171.100.88	100 x 88°	19
171.150.42	150 x 42°	9
171.150.88	150 x 88°	5
171.50.40.42	50 x40 x 42°	50 / 5

*Spigot is 50mm



REDUCING BEND
M & F



INSPECTION BEND

101.40.45W	40 x 45°	60 / 5
101.40.88W	40 x 88°	40 / 10
101.50.45W	50 x 45°	90 / 5
101.50.88W	50 x 88°	70 / 10
101.65.88W	65 x 88°	60
101.80.88W	80 x 88°	35
101.100.45W	100 x 45°	28
101.100.88W	100 x 88°	17

NOVADRAIN PVC-U Drain Waste and Vent Fittings SCJ NON-PRESSURE

ORDER CODE	SIZE mm	CTN / BAG QTY
102.100.88	100 x 88°	15
103.100.45	100 x 45°	8
103.100.88	100 x 88°	8
104.32.45	32 x 45°	100 / 5
104.32.88	32 x 88°	40 / 5
104.40.45	40 x 45°	35 / 5
104.40.88	40 x 88°	50 / 5
104.50.45	50 x 45°	40 / 5
104.50.88	50 x 88°	50 / 5
104.65.45	65 x 45°	35
104.65.88	65 x 88°	45
104.80.45	80 x 45°	24
104.80.88	80 x 88°	24
104.100.45*	100 x 45°	12
104.100.88**	100 x 88°	14
104.150.45	150 x 45°	3
104.150.88	150 x 88°	4
*Threaded on one main way socket and branch socket		
**Threaded on one main way socket		
104.80.50.45	80 x 50 x 45°	32
104.100.50.45	100 x 50 x 45°	18
104.100.50.88	100 x 50 x 88°	24
104.100.65.45	100 x 65 x 45°	18
104.100.80.45	100 x 80 x 45°	16
104.150.100.45	150 x 100 x 45°	5
104.150.100.88	150 x 100 x 88°	5
104.40.88W	40 x 88°	40 / 5
104.50.88W	50 x 88°	40 / 5
104.65.88W	65 x 88°	40
104.80.88W	80 x 88°	20
104.100.88W	100 x 88°	12
105.100.88	100 x 88°	10
105.100.45LH	100 x 45°	7
105.100.45RH	100 x 45°	7
106.100.88	100 x 88°	8
110.32	32	110 / 5
110.40	40	60 / 10
110.50	50	130 / 10
110.65	65	130
110.80	80	96
110.100	100	45
110.100T*	100	45
110.150	150	14
110.150T*	150	14
*Threaded one end		



REAR ACCESS BEND



ACCESS BEND



PLAIN JUNCTION



REDUCING JUNCTION



INSPECTION JUNCTION



REAR ACCESS JUNCTION



SIDE ACCESS JUNCTION



DOUBLE JUNCTION



STRAIGHT COUPLING

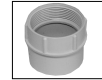
NOVADRAIN PVC-U Drain Waste and Vent Fittings SCJ NON-PRESSURE

ORDER CODE	SIZE mm	CTN / BAG QTY
111.40	40	40 / 5
111.50	50	50 / 5
111.65	65	105
111.80	80	50
111.100	100	36
111.150	150	12
112.32	32	80 / 5
112.40	40	60 / 10
112.50	50	80 / 10
112.65	65	90
113.32	32	80 / 5
113.40	40	90 / 10
113.50	50	100 / 10
113.100	100	12
113.40.32	40 x 32	800 / 1
114.32	32	100 / 10
114.40	40	180 / 10
114.50	50	110 / 5
114.80	80	50
114.100	100	36
119.100.50	100 x 50	70
120.80	80	60
120.100	100	30
121.100	100	30
198.100.40	100 x 40	72
122.100.50	100 x 50	72
123.40.32	40 x 32	90 / 5
123.50.40	50 x 40	50 / 5
123.65.40	65 x 40	180
123.65.50	65 x 50	200
123.80.50	80 x 50	85
123.80.65	80 x 65	85
123.100.50	100 x 50	45
123.100.65	100 x 65	60
123.100.80	100 x 80	45
123.150.100	150 x 100	20
123.150.100S*	150 x 100	1

*Socket both ends



EXPANSION
COUPLING



FEMALE IRON TO
PVC (SOCKET)



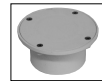
MALE IRON TO
PVC (SOCKET)



COPPER TO PVC
ADAPTOR



STRAP ON BOSS



BOLTED TRAP SCREW



BOLTED TRAP SCREW
PIPE SPIGOT



PIPE REDUCER



LEVEL INVERT
TAPER

NOVADRAIN PVC-U Drain Waste and Vent Fittings SCJ NON-PRESSURE

ORDER CODE	SIZE mm	CTN / BAG QTY
124.40.32	40 x 32	130 / 5
124.50.40	50 x 40	100 / 10
124.65.40	65 x 40	180 / 10
124.65.50	65 x 50	200 / 10
124.80.50	80 x 50	130 / 10
124.80.65	80 x 65	150
124.100.40	100 x 40	87
124.100.50	100 x 50	87
124.100.65	100 x 65	87
124.100.80	100 x 80	84
124.150.100	150 x 100	35
124.AC.100	140 x 100	72
124.AC.150	192 x 150	20

125.65	65	300 / 10
125.80	80	250
125.100	100	160

127.80*	80	36
---------	----	----

*Offset

127.100**	100	36
127.100A*	100	36
127.100R***	100	140

*Offset
 ** Concentric
 *** Rubber Seal Ring only

128.100	100	120
---------	-----	-----

129.100	100	9
129.100S**	100	14
129.150	150	4

**Small access cap and threaded on one main way socket.

129.80	80	28
129.100FF	100	9
129.150FF	150	4

131.50	50	50 / 5
131.65	65	60
131.80	80	156
131.100	100	100

136.80	80	80
136.100	100	35
136.150	150	12

136C.100	100	85
136C.150	150	24
136L.150*	150	1

*Large access cap.



SOCKET REDUCER



CERAMIC TO PVC ADAPTOR



FLOOR FLANGE



FLEXIBLE PAN COLLAR FEMALE



FLEXIBLE PAN COLLAR MALE (UNSUITABLE FOR USE WITH P-PANS)



SAFE WASTE TRAY



INSPECTION PIPE M&F



INSPECTION PIPE F&F



WEATHER APRON



ACCESS CAP AND BASE



ACCESS CAP

NOVADRAIN PVC-U Drain Waste and Vent Fittings SCJ NON-PRESSURE

ORDER CODE	SIZE mm	CTN / BAG QTY
136.100PP	100	250
137.40	40	120 / 10
137.50	50	100 / 10
137.65	65	250 / 10
137.80	80	160 / 10
137.100	100	135
137.150	150	68
150.40	40	100 / 5
150.50.40	50 x 40	40 / 5
150.65	65	170
150.80	80	162
150.100	100	135
150.150	150	56
159.80.50P	80 x 50	32
159.80.65P	80 x 65	28
159.80.80P*	80 x 80	18
159.100.50	100 x 50	26
159.100.65	100 x 65	22
*Plain floor waste gully (fixed)		
**Use only in conjunction with Iplex Boss Junctions		
159.100	100	12
*Use only in conjunction with Iplex Boss Junctions		
172.100	100	66
151.140	140	132
Grate Only Use in conjunction with 172.100 Finishing Collar		
172G.100	140	130
Grate Only Use in conjunction with 172.100 Finishing Collar		
173.100ORC	100	30
174.80.50.40.88	80x(2x50)x(2x40) x88°	30
174.80.5444.88	80x(1x50)x(3x40)x88	30
174.100.50.40.88	100x(3x50)x(1x40)x88°	16
174.100.5444.88	100x(1x50)x(3x40)x88	16
*Use only in conjunction with Iplex Squat Floor Gully and Adjustable Gully Trap		
104.100.50.40.88	100x(3x50)x(1x40)x88°	12
*Use only in conjunction with Iplex Squat Floor Gully and Adjustable Gully Trap		



DUST CAP



PUSH-ON CAPS



VENT COWL



SQUAT FLOOR WASTE GULLY**



ADJUSTABLE GULLY TRAP*



FINISHING COLLAR



POP-OUT GRATE FLAT



POP-OUT GRATE DOMED



DWV OVERFLOW RELIEF CAP



BOSS JUNCTION M & F*



BOSS JUNCTION F & F*

NOVADRAIN PVC-U Drain Waste and Vent Fittings SCJ NON-PRESSURE

ORDER CODE	SIZE mm	CTN / BAG QTY
178.100	100	32
183.50	50	210 / 5
9145.80	80	1
9145.100	100	1
9145.150	150	1

Compatible with NZS or BS Copper Tube



SLAB REPAIR
COUPLING



VERMIN STOPPER



COPPER TO PVC
SEAL RING

NOVADRAIN PVC-U Drain Waste and Vent Fittings RRJ NON-PRESSURE

ORDER CODE	SIZE mm	CTN QTY
1501.100.45	100 x 45°	20
1501.100.60	100 x 60°	18
1501.100.88	100 x 88°	16
1501.150.45	150 x 45°	6
1501.150.88	150 x 88°	4
1501.150A	150 x 0-45°	6
1571.100.5	100 x 5°	32
1571.100.11	100 x 11°	34
1571.100.15	100 x 15°	27
1571.100.22	100 x 22°	24
1571.100.30	100 x 30°	27
1571.150.15	150 x 15°	10
1502.100.88	100 x 88°	12
1503.100.45	100 x 45°	8
1503.100.88	100 x 88°	8
1504.100.45	100 x 45°	8
1504.100.88	100 x 88°	9
1504.150.45	150 x 45°	2
1574.150.45	150 x 45°	2
1574.150.88	150 x 88°	2
1504.150.100.45	150 x 100 x 45°	3
1574.150.100.45	150 x 100 x 45°	3
1574.150.100.88	150 x 100 x 88°	5
1505.100.45LH	100 x 45°	6
1505.100.45RH	100 x 45°	6



PLAIN BEND F & F



ADJUSTABLE BEND F&F



PLAIN BEND M & F



RAMP BEND



ACCESS BEND



PLAIN JUNCTION F & F



PLAIN JUNCTION M & F



REDUCING JUNCTION F&F



REDUCING JUNCTION M&F



ACCESS JUNCTION

NOVADRAIN PVC-U Drain Waste and Vent Fittings RRJ NON-PRESSURE

ORDER CODE	SIZE mm	CTN QTY
1511S.80	80	45
1511S.150	150	12
1511.100	100	36
1511.150	150	12
1511R.100	100	27
1514.100.88	100 x 88°	8
1516.100	100	23
1523.150.100	150 x 100	15
1527.100.150	100 x 150	18
1524.100	100	44
1524.150	150	8
1525.100	100	36
1525.150	150	10



SLIP COUPLING



COMBINATION
LOOSE/SLIP
COUPLING



LOOSE COUPLING



REPAIR COUPLING



SEPTIC TANK
JUNCTION



FRESH AIR INLET



LEVEL INVERT
TAPER



REVERSE LEVEL
INVERT TAPER



PVC TO CERAMIC
ADAPTER



CERAMIC
SOCKET TO PVC
ADAPTER

NOVADRAIN PVC-U Drain Waste and Vent Fittings RRJ NON-PRESSURE

ORDER CODE	SIZE mm	CTN QTY
1529.100	100	9
1529.150	150	4
1559.100	100	6
1575.100	100	10
1575L.100*	100	48
*Lid Only		
1575.100R	100	5
1575.200R	200	8
1575.300R	300	4
1588.100	100	2



INSPECTION PIPE
M&F



GULLEY TRAP



GULLEY DISH



GULLEY DISH
RISER



REFLUX VALVE

UNI-TRAP Waste Traps

ORDER CODE	SIZE mm	CTN QTY
160.40.32P	40 x 32	55
161.40.32S	40 x 32	45
162.40.32DW With dishwasher connection	40 x 32	10
ADAPTA KIT For use with 160 & 161 Uni-Traps	40 x 32	1



PLAIN P TRAP



PLAIN S TRAP



COMBINATION
S & P (INCLUDES
ADAPTA KIT)

PIPE CLIPS

ORDER CODE	SIZE mm	CTN / BAG QTY
140.32	32	540 / 10
140.40	40	400 / 10
140.50	50	240 / 5
140.65	65	80
140.90	90	100
140H.80	80	250
140H.100	100	200
140H.150	150	100
141.32	32	300 / 10
141.40	40	250 / 10
141.50	50	190 / 10
141.80	80	50
141.100	100	50 / 10
142.32	32	400 / 10
142.40	40	400 / 10
142.50	50	250 / 10
142.80	80	120
142.100	100	120
143.32	32	250 / 10
143.40	40	200 / 10
143.50	50	200 / 10
143.80	80	50
143.100	100	35
143.150	150	25
841C.15	15	10
841C.20	20	10
841P.15	15	10
841P.20	20	10



DWV PIPE CLIP



DWV HOLDERBAT
(ALUMINIUM)



DWV STANDARD
KEY CLIP



DWV SIDE
HANGER KEY CLIP



DWV STAND OFF KEY CLIP



COPPER PIPE CLIPIT
COMPLETE WITH NAIL



POLYBUTYLENE CLIPIT
COMPLETE WITH NAIL

SMART PRODUCTS

ORDER CODE	SIZE mm	CTN / BAG QTY
D101SPAN	100	12
D101SSEAL		15
D101SWASTE*	100	6
D101SWASTE.B	LID ONLY	1
*Includes Lid		
D101STRAP50	100 x 50	6
D101STILE.2*		32
*Stainless steel		



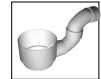
SMARTPAN



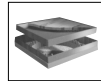
SMARTSEAL



SMARTWASTE



SMARTTRAP



SMARTTILE

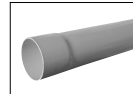
STORMWATER & ROADING SYSTEMS

**SUPERSTORM™
AQUACELL SYSTEM
NEXUS™ HI-WAY
NEXUS™ HI-WAY with FILTER SOCK
NEXUS™ with FILTER SOCK
NOVAFLO™ with FILTER SOCK
STORMFIT**

PVC-U STORMWATER DUCT NON PRESSURE APPLICATIONS ONLY - AS/NZS 1254

SUPERSTORM 4000 PVC-U STORMWATER DUCT SOE & Z JOINT SN4

ORDER CODE	SIZE mm x LENGTH m	PACK QTY
700SN4.90.6 SOE	90 x 6	81
700SN4.100.6 SOE	100 x 6	67
700SN4.150.6 SOE	150 x 6	28
700SN4.175.6 SOE	175 x 6	20
700SN4.225.6 SOE	225 x 6	12



SOLVENT CEMENT JOINT

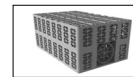
Z700SN4.150.6	150 x 6	28
Z700SN4.175.6	175 x 6	20
Z700SN4.225.6	225 x 6	12
Z700SN4.300.6	300 x 6	6
Z700SN4.375.6	375 x 6	6
Z700SN4.475.6	475 x 6	4
Z700SN4.500.6	500 x 6	2
Z700SN4.600.6	600 x 6	2



RUBBER RING JOINT

AQUACELL STORMWATER SYSTEM

ORDER CODE	SIZE mm	PACK QTY
AQUACELL UNIT	1000mm (L) x 500mm (W) x 400mm (H)	10



UNIT

AQUACELL CLIP		500
---------------	--	-----



CLIP

ROADING PRODUCTS

NEXUS HI-WAY ROAD DRAINAGE SYSTEM Twin Wall Smooth Bore Heavy Duty PE (Punched)

(Complies with TRANSIT NZ SPECIFICATION TNZ F/2)

ORDER CODE	SIZE mm	LENGTH m
NEXUS1105HD	110	5
NEXUS110100HD	110	100
NEXUS1605HD	160	5
NEXUS16045HD	160	45
NEXUS2005HD	200	5



BLACK PIPE WITH RED STRIPE SUPPLIED WITH PUSH FIT COUPLER

NEXUS HI-WAY FILTER SOCK ROAD DRAINAGE SYSTEM Twin Wall Smooth Bore Heavy Duty PE (Punched – with Filter Sock)

(Complies with TRANSIT NZ SPECIFICATION TNZ F/2)

ORDER CODE	SIZE mm	LENGTH m
NEXUS110100HDFS	110	100
NEXUS16045HDFS	160	45



BLACK PIPE WITH RED STRIPE SUPPLIED WITH PRE-APPLIED FILTER SOCK & COUPLER

NEXUSFLO FILTER SOCK LAND DRAINAGE SYSTEM Twin Wall Smooth Bore PE (Punched – with Filter Sock)

ORDER CODE	SIZE mm	LENGTH m
NEXUS110100FS*	110	100
NEXUS16045FS*	160	45

*Complies with TRANSIT NZ SPECIFICATION TNZ F/5: 2000



BLACK PIPE WITH BLUE STRIPE SUPPLIED WITH PRE-APPLIED FILTER SOCK & COUPLER

NOVAFLO FILTER SOCK LAND DRAINAGE SYSTEM Single Wall Corrugated Bore PE (Punched – with Filter Sock)

ORDER CODE	SIZE mm	LENGTH m
400.110.30FS	110	30
400.110.100FS	110	100
400.160.45FS	160	45



BLACK PIPE WITH PRE-APPLIED FILTER SOCK & COUPLER

STORMFIT PVC-U STORMWATER FITTINGS NON PRESSURE APPLICATIONS ONLY

ORDER CODE	SIZE mm	CTN QTY
701.90.15	90 x 15°	110
701.90.22	90 x 22°	110
701.90.45	90 x 45°	80
701.90.88	90 x 88°	60
101.100.5	100 x 5°	42
101.100.15	100 x 15°	35
101.100.30	100 x 30°	35
101.100.45	100 x 45°	32
101.100.88	100 x 88°	19
701.150.45	150 x 45°	12
701.150.90	150 x 90°	8
771.90.45M&F	90 x 45°	75
103.100.45	100 x 45°	8
103.100.88	100 x 88°	8
704.90.45**	90 x 45°	28
704.90.88*	90 x 88°	40
104.100.45***	100 x 45°	12
104.100.88**	100 x 88°	14
704.150.45**	150 x 45°	4
704.150.90***	150 x 90°	5
*Threaded on branch socket		
**Threaded on one main way socket		
***Threaded on one main way socket and branch socket		
704.150.100.45	150 x 100 x 45°	5
105.100.45LH	100 x 45°	7
105.100.45RH	100 x 45°	7
710.90*	90	140
110.100	100	45
110.150	150	14
* Threaded fitting		
711S.90	90	80
711R.90	90	80



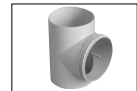
PLAIN BEND F&F



PLAIN BEND M&F



ACCESS BEND



PLAIN JUNCTION



REDUCING JUNCTION



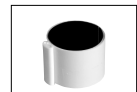
INSPECTION JUNCTION



STRAIGHT COUPLING



SLIP REPAIR COUPLING



REPAIR COUPLING

STORMFIT PVC-U STORMWATER FITTINGS NON PRESSURE APPLICATIONS ONLY

ORDER CODE	SIZE mm	CTN QTY
724.100.90	100 x 90	85
724.90.100	90 x 100	90
129.100	100	9
736.90 (gasket sold separately)	90	100
136.100	100	35
736C.90 *	90	160
136C.100*	100	85
736G.90**	90	1
*Cap only		
**Gasket		
737.90	90	300
137.100	100	135
137.150	150	68
140.90	90	100
765.90	90	32
765.100	100	18
728.90	90	80
769.90	90	150
769.150.100	150 x 100	28



SOCKET REDUCER



ADAPTOR



INSPECTION PIPE M & F



SCREW CAP AND BASE



PUSH ON CAP



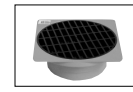
PIPE CLIP



KERB OUTLET



STORMWATER GRATE



STORMWATER GRATE

PRESSURE SYSTEMS

**APOLLO™
NOVAKEY™
WHITE RHINO™
BLUE RHINO™
REPAIR CLAMPS
BLUELINE™
PLASSON FITTINGS
POLIPLEX**

APOLLO PVC-O Pressure Pipe Metric Pipe Series 1, AS/NZS 4441

APOLLO PN6.3 (630kPa, 91 PSI)

ORDER CODE	SIZE mm x LENGTH m	PACK QTY
Z880.100PN6.3.6	100 x 6	50
Z880.150PN6.3.6	150 x 6	28
Z880.200PN6.3.6	200 x 6	15
Z880.300PN6.3.6	300 x 6	6



RUBBER RING JOINT

APOLLO PN10 (1000kPa, 145 PSI)

ORDER CODE	SIZE mm x LENGTH m	PACK QTY
Z880.100PN10.6	100 x 6	50
Z880.150PN10.6	150 x 6	28
Z880.200PN10.6	200 x 6	15
Z880.300PN10.6	300 x 6	6



RUBBER RING JOINT

APOLLO PN12.5 (1250kPa, 181 PSI)

ORDER CODE	SIZE mm x LENGTH m	PACK QTY
Z880.100PN12.5.6	100 x 6	50
Z880.150PN12.5.6	150 x 6	28
Z880.200PN12.5.6	200 x 6	15
Z880.300PN12.5.6	300 x 6	6



RUBBER RING JOINT

APOLLOBLUE PVC-O Pressure Pipe CIOD Series 2, AS/NZS 4441

APOLLOBLUE PN12.5 (1250kPa, 181 PSI)

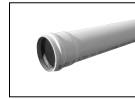
ORDER CODE	SIZE mm x LENGTH m	PACK QTY
1880.100PN12.5.6	100 x 6	32
1880.150PN12.5.6	150 x 6	24
1880.200PN12.5.6	200 x 6	15
1880.250PN12.5.6	250 x 6	12
1880.300PN12.5.6	300 x 6	6



RUBBER RING JOINT

APOLLOBLUE PN16 (1600kPa, 232 PSI)

ORDER CODE	SIZE mm x LENGTH m	PACK QTY
1880.100PN16.6	100 x 6	32
1880.150PN16.6	150 x 6	24
1880.200PN16.6	200 x 6	15
1880.250PN16.6	250 x 6	12
1880.300PN16.6	300 x 6	6



RUBBER RING JOINT

– For technical assistance call customer services 0800 800 262

NOVAKEY PVC-U Pressure Pipe Metric Pipe Series 1, AS/NZS 1477

NOVAKEY PN6 (CLASS B, 600kPa, 87PSI)

ORDER CODE	SIZE mm x LENGTH m	PACK & BDLE QTY
800.40PN6.6	40 x 6	225 / 5*
800.50PN6.6	50 x 6	123
800.65PN6.6	65 x 6	56
800.80PN6.6	80 x 6	60
800.100PN6.6**	100 x 6	40
800.125PN6.6	125 x 6	32
800.150PN6.6**	150 x 6	28
800.175PN6.6	175 x 6	20
800.200PN6.6**	200 x 6	15
800.225PN6.6	225 x 6	12
800.250PN6.6	250 x 6	12
800.300PN6.6**	300 x 6	6
800.375PN6.6	375 x 6	6
800.450PN6.6	450 x 6	2
800.575PN6.6	575 x 6	2

*This bundle size is the minimum order quantity

**Availability subject to conversion to PVC-O.

Z Joint Rings included in price



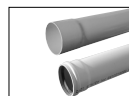
SOLVENT CEMENT & RUBBER RING JOINT

NOVAKEY PN9 (CLASS C, 900kPa, 130PSI)

ORDER CODE	SIZE mm x LENGTH m	PACK QTY
800.50PN9.6	50 x 6	123
800.65PN9.6	65 x 6	56
800.80PN9.6	80 x 6	60
800.100PN9.6**	100 x 6	40
800.150PN9.6**	150 x 6	28
800.200PN9.6**	200 x 6	15

**Availability subject to conversion to PVC-O.

Z Joint Rings included in price



SOLVENT CEMENT & RUBBER RING JOINT

NOVAKEY PN12 (CLASS D, 1200kPa, 173PSI)

ORDER CODE	SIZE mm x LENGTH m	PACK & BDLE QTY
800.32PN12.6	32 x 6	210 / 10*
800.40PN12.6	40 x 6	225 / 5*
800.50PN12.6	50 x 6	123
800.65PN12.6	65 x 6	56
800.80PN12.6	80 x 6	60
800.100PN12.6**	100 x 6	40
800.150PN12.6**	150 x 6	28
800.200PN12.6**	200 x 6	15

*These bundle sizes are the minimum order quantity

**Availability subject to conversion to PVC-O.

Z Joint Rings included in price



SOLVENT CEMENT & RUBBER RING JOINT

NOVAKEY PN15 (CLASS E, 1500kPa, 217PSI)

ORDER CODE	SIZE mm x LENGTH m	PACK & BDLE QTY
800.15PN15.6	15 x 6	650 / 10*
800.20PN15.6	20 x 6	500 / 10*
800.25PN15.6	25 x 6	320 / 10*
800.32PN15.6	32 x 6	210 / 10*
800.40PN15.6	40 x 6	225 / 5*
800.50PN15.6	50 x 6	123
800.65PN15.6	65 x 6	56
800.80PN15.6	80 x 6	60
800.100PN15.6	100 x 6	40
800.150PN15.6	150 x 6	28
800.200PN15.6	200 x 6	15

*These bundle sizes are the minimum order quantity

Z Joint Rings included in price



SOLVENT CEMENT & RUBBER RING JOINT

WHITE RHINO PVC-M PRESSURE PIPE Metric Pipe Series 1, AS/NZ 4765

WHITE RHINO PN6 (600kPa, 87PSI)

ORDER CODE	SIZE mm x LENGTH m	PACK QTY
850.100PN6.6**	100 x 6	40
850.125PN6.6	125 x 6	32
850.150PN6.6**	150 x 6	28
850.175PN6.6	175 x 6	20
850.200PN6.6**	200 x 6	15
850.225PN6.6	225 x 6	12

**Availability subject to conversion to PVC-O.

Z Joint Rings included in price.



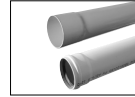
SOLVENT CEMENT & RUBBER RING JOINT

WHITE RHINO PN9 (900kPa, 130PSI)

ORDER CODE	SIZE mm x LENGTH m	PACK QTY
850.100PN9.6**	100 x 6	40
850.125PN9.6	125 x 6	32
850.150PN9.6**	150 x 6	28
850.175PN9.6	175 x 6	20
850.200PN9.6**	200 x 6	15
850.225PN9.6	225 x 6	12
850.250PN9.6	250 x 6	12
850.300PN9.6**	300 x 6	6
850.375PN9.6	375 x 6	6
850.450PN9.6	450 x 6	2
850.575PN9.6	575 x 6	2

**Availability subject to conversion to PVC-O.

Z Joint Rings included in price.



SOLVENT CEMENT & RUBBER RING JOINT

WHITE RHINO PN12 (1200kPa, 173PSI)

ORDER CODE	SIZE mm x LENGTH m	PACK QTY
850.100PN12.6**	100 x 6	40
850.125PN12.6	125 x 6	32
850.150PN12.6**	150 x 6	28
850.175PN12.6	175 x 6	20
850.200PN12.6**	200 x 6	15
850.225PN12.6	225 x 6	12
850.250PN12.6	250 x 6	12
850.300PN12.6**	300 x 6	6
850.375PN12.6	375 x 6	6
850.450PN12.6	450 x 6	2
850.575PN12.6	575 x 6	2

**Availability subject to conversion to PVC-O.

Z Joint Rings included in price.



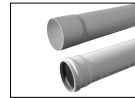
SOLVENT CEMENT & RUBBER RING JOINT

WHITE RHINO PN15 (1500kPa, 217PSI)

ORDER CODE	SIZE mm x LENGTH m	PACK QTY
850.100PN15.6	100 x 6	40
850.125PN15.6	125 x 6	32
850.150PN15.6	150 x 6	28
850.175PN15.6	175 x 6	20
850.200PN15.6	200 x 6	15

Z Joint Rings included in price.

860.50	50	1
860.65	65	1
860.80	80	1
860.100	100	1
860.125	125	1
860.150	150	1
860.175	175	1
860.200	200	1
860.225	225	1
860.300	300	1
860.375	375	1
860.450	450	1



SOLVENT CEMENT & RUBBER RING JOINT



RUBBER SEALING RING FOR METRIC SERIES Z JOINT NOVAKEY & WHITE RHINO METRIC PIPE

No discount on rings

BLUE RHINO PVC-M Pressure Pipe CIOD Series 2, AS/NZ 4765

BLUE RHINO PN12 (CLASS D, 1200kPA, 173PSI)

ORDER CODE	SIZE mm x LENGTH m	PACK QTY
1850.100PN12.6 RRJ**	100 x 6	32
1850.150PN12.6 RRJ**	150 x 6	18
1850.200PN12.6 RRJ**	200 x 6	15
1850.250PN12.6 RRJ**	250 x 6	12
1850.300PN12.6 RRJ**	300 x 6	6
1850DRJ.375PN12.6	375 x 6	6
1850DRJ.450PN12.6	450 x 6	4
1850DRJ.500PN12.6	500 x 6	2

**Availability subject to conversion to PVC-O.

Rubber Rings included in price



RUBBER RING JOINT

BLUE RHINO PN16 (1600kPA, 232PSI)

ORDER CODE	SIZE mm x LENGTH m	PACK QTY
1850.100PN16.6 RRJ**	100 x 6	32
1850.150PN16.6 RRJ**	150 x 6	18
1850.200PN16.6 RRJ**	200 x 6	15
1850.250PN16.6 RRJ**	250 x 6	12
1850.300PN16.6 RRJ**	300 x 6	6

**Availability subject to conversion to PVC-O.

Rubber Rings included in price



RUBBER RING JOINT

1860.100	100	1
1860.150	150	1
1860.250	250	1
1860.300	300	1
1860.375	375	1
1860.450	450	1
1860.500	500	1

No discount on rings

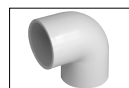


RUBBER SEALING RING
FOR CIOD SERIES
BLUE BRUTE AND
BLUE RHINO PIPE

NOVAKEY PVC-U PRESSURE PIPE FITTINGS COMPATIBLE WITH PVC PRESSURE PIPE METRIC SERIES 1

Note: The Bag Quantity shown is the minimum order quantity for 15mm to 50mm pressure fittings

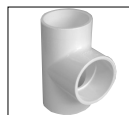
ORDER CODE	SIZE mm	CTN / BAG QTY
801.15.90	15	440 / 10
801.20.90	20	250 / 10
801.25.90	25	120 / 10
801.32.90	32	80 / 10
801.40.90	40	50 / 10
801.50.90	50	25 / 5
801.65.90	65	15
801.80.90	80	9
801.100.90	100	5
801.125.90*	125	5
801.150.90	150	2
801.200.90*	200	2
*Grey fitting with parallel sockets		
801.15.45	15	400 / 10
801.20.45	20	260 / 10
801.25.45	25	150 / 10
801.32.45	32	80 / 10
801.40.45	40	50 / 10
801.50.45	50	25 / 5
801.65.45*	65	12
801.80.45	80	12
801.100.45	100	6
801.125.45*	125	6
801.150.45	150	2
801.200.45*	200	2
*Grey fitting with parallel sockets		
804.15	15	300 / 10
804.20	20	150 / 10
804.25	25	100 / 10
804.32	32	60 / 10
804.40	40	30 / 10
804.50	50	20 / 5
804.65	65	12
804.80	80	6
804.100	100	4
804.125*	125	6
804.150	150	1
804.200*	200	1
*Grey fitting with parallel sockets		
805.20.15	20 x 15	150 / 10
805.25.20	25 x 20	90 / 10
805.32.25	32 x 25	60 / 10
805.40.32	40 x 32	80 / 20
805.50.40	50 x 40	25 / 5
805.80.50	80 x 50	9
805.100.50	100 x 50	4
806.15	15	200 / 20
806.20	20	300 / 20
806.25	25	180 / 10
806.32	32	120 / 10
806.40*	40	80 / 10
806.50	50	50 / 5
806.65	65	15
806.80	80	44
806.100	100	12
* Also a reducing faucet spigot		
807.15	15	280 / 10
807.20	20	200 / 10
807.25	25	80 / 10
808.15.90	15	380 / 10
808.20.90	20	200 / 10
808.25.90	25	120 / 10
808.32.90	32	70 / 10



PLAIN 90° ELBOW
125mm: PN16



PLAIN 45° ELBOW
65mm & 125mm: PN16
200mm: PN10



PLAIN 90° TEE
125mm & 200mm: PN16



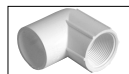
PLAIN 90°
REDUCING TEE



FAUCET COUPLING
65mm: PN10



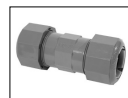
PLAIN 90° TEE



FAUCET 90° ELBOW

NOVAKEY PVC-U PRESSURE PIPE FITTINGS COMPATIBLE WITH PVC PRESSURE PIPE METRIC SERIES 1

ORDER CODE	SIZE mm	CTN / BAG QTY
809.15	15	10
809.20	20	120
809.25	25	10
809.32	32	50
809.40	40	10
809.50	50	1
These fittings can be purchased individually.		
810.15	15	420 / 10
810.20	20	400 / 10
810.25	25	230 / 10
810.32	32	140 / 10
810.40	40	80 / 10
810.50	50	50 / 5
810.65	65	28
810.80	80	18
810.100	100	10
810.150	150	2
These fittings can be purchased individually.		
811.15	15	160 / 20
811.20	20	140 / 20
811.25	25	80 / 20
811.32	32	60 / 10
811.40	40	45 / 5
811.50	50	30 / 5
These fittings can be purchased individually.		
813.15	15	550 / 10
813.20	20	320 / 10
813.25	25	200 / 10
813.32	32	130 / 10
813.40	40	100 / 10
813.50	50	50 / 5
813.65	65	40
813.80	80	30
813.100	100	16
These fittings can be purchased individually.		
817.15	15	650 / 10
817.20	20	350 / 10
817.25	25	240 / 10
817.32	32	140 / 10
817.40	40	110 / 10
817.50	50	60 / 5
These fittings can be purchased individually.		
818.20.15	20 x 15	800 / 10
818.25.20	25 x 20	400 / 10
These fittings can be purchased individually.		
823.20.15	20 x 15	380 / 10
823.25.20	25 x 20	260 / 10
823.32.25	32 x 25	120 / 10
823.40.32	40 x 32	70 / 10
823.50.40	50 x 40	60 / 5
823.65.50	65 x 50	48
823.80.50	80 x 50	30
823.80.65	80 x 65	18
823.100.80	100 x 80	16
823.125.100	125 x 100	6
823.150.100	150 x 100	4



COMPRESSION COUPLING (PN12)



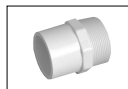
PLAIN COUPLER



SOCKET UNION



VALVE SOCKET
65mm: PN12



VALVE SPIGOT



THREADED BUSH



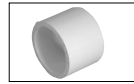
REDUCING SOCKET

NOVAKEY PVC-U PRESSURE PIPE FITTINGS COMPATIBLE WITH PVC PRESSURE PIPE METRIC SERIES 1

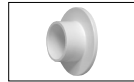
ORDER CODE	SIZE mm	CTN / BAG QTY
824.20.15	20 x 15	850 / 10
824.25.15	25 x 15	750 / 10
824.25.20	25 x 20	600 / 10
824.32.25	32 x 25	370 / 10
824.40.25	40 x 25	280 / 10
824.40.32	40 x 32	280 / 10
824.50.40	50 x 40	120 / 5
824.65.50	65 x 50	90
824.80.50	80 x 50	55
824.80.65*	80 x 65	36
824.100.50	100 x 50	30
824.100.80	100 x 80	30
824.125.100*	125 x 100	20
824.150.100	150 x 100	9
824.150.125*	150 x 125	9
*Grey fitting with parallel sockets		
825.50	50	30
825.65	65	20
825.80	80	12
825.100	100	9
825.150	150	4
NB: Holes must be drilled to suit the application. Same method can be used with some non-British standard flanges.		
826.50*	50	48
826.65	65	42
826.80	80	25
826.100	100	14
826.125*	125	8
826.150	150	4
826.175*	175	6
826.200*	200	6
826.225*	225	6
826.300*	300	3
*Grey fitting with parallel sockets		
827.50	50	100
827.65	65	100 / 10
827.80	80	100 / 10
827.100	100	100 / 10
827.125	125	10
827.150	150	100 / 10
827.200	200	1
827.300	300	1
830.15	15	600 / 10
830.20	20	500 / 10
830.25	25	300 / 10
830.32	32	220 / 10
830.40	40	160 / 10
830.50	50	80 / 5
830.65	65	48
830.80	80	36
830.100	100	20
830.125	125	14
830.150	150	5
837.15	15	900 / 10
837.20	20	700 / 10
837.25	25	500 / 10
837.32	32	120 / 10
837.40	40	100 / 10
837.50	50	50 / 5
837.80	80	40
837.100	100	24

840.15	15	900 / 10
840.20	20	700 / 10
840.25*	25	500 / 10
840.32*	32	400 / 10
840.40*	40	300 / 10
840.50*	50	300 / 10

*Product may differ from drawing



REDUCING BUSH
150 x 125mm: PN16



FULL FACE FLANGE



STUB FLANGE
125mm: PN16
175mm to 300mm: PN10



METAL BACKING RING
FOR 826 FLANGE
DRILLED TO TABLE E



PLAIN END CAP



THREADED END PLUG



PIPE CLIP

NOVAKEY PVC-U PRESSURE PIPE FITTINGS COMPATIBLE WITH PVC PRESSURE PIPE METRIC SERIES 1

ORDER CODE	SIZE mm	CTN / BAG QTY
842.50	50	1
842.65	65	1
842.80	80	1
842.100	100	1
842.150	150	1
845.50	50	1
845.65	65	1
845.80	80	1
845.100	100	1
845.125	125	1
845.150	150	1
845.175	175	1
845.200	200	1
845.225	225	1
845.300	300	1



NEOPRENE GASKET FOR FULL FACE FLANGE 825



NEOPRENE GASKET FOR STUB FLANGE 826

Maximum working pressure size range:(NOVAKEYMoulded PVC-U fittings)
 15-50mm.....1800kPa, PN18
 65-125mm.....1500kPa, PN15
 150-200mm.....1200kPa, PN12
 This is a general guide only. If in doubt, check the pressure rating on the fitting or contact your local Iplex Pipelines office.

APOLLO PVC-O PRESSURE FITTINGS (PN 16 - 1600 KPa)

(COMPATIBLE WITH PVC-O, PVC-U & PVC-M PRESSURE PIPE METRIC SERIES 1)

ORDER CODE	SIZE mm	CTN / BAG QTY
8801.150.22	150	37
8801.175.22	175	16
8801.225.22	225	7
8801.300.22	300	4
8801.375.22	375	2
8801.150.45	150	29
8801.175.45	175	19
8801.225.45	225	8
8801.300.45	300	3
8801.375.45	375	1
8810.150	150	48
8810.175	175	29
8810.225	225	13
8810.300	300	8
8810.375	375	3
8811.150	150	48
8811.175	175	29
8811.225	225	13
8811.300	300	8
8811.375	375	3
8823.175.150	175 x 150	24
8823.225.175	225 x 175	16
8823.300.225	300 x 225	9
8823.375.225	375 x 225	4
8823.375.300	375 x 300	2



PLAIN 22° ELBOW



PLAIN 45° ELBOW



PLAIN COUPLER



SLIP / REPAIR COUPLER



REDUCING SOCKET

REPAIR CLAMPS

ORDER CODE	SIZE mm	QTY
C3701.05915	59-64 OD x 150mm LONG	1
C3701.06915	69-74 OD x 150mm LONG	1
C3701.08815	88-95 OD x 150mm LONG	1
C3701.11020	110-120 OD x 200mm LONG	1
C3701.12020	120-130 OD x 200mm LONG	1
C3701.15020	150-160 OD x 200mm LONG	1
C3701.17420WA	174-184 OD x 200mm LONG	1
GM5308403	15-21.3mm OD x 75mm LONG	1
GM5308406	15-21.3mm OD x 150mm LONG	1
GM5310503	20-26.7mm OD x 75mm LONG	1
GM5310506	20-26.7mm OD x 150mm LONG	1
GM5313203	25-33.4mm OD x 75mm LONG	1
GM5313206	25-33.4mm OD x 150mm LONG	1
GM5316003	32-42.2mm OD x 75mm LONG	1
GM5316006	32-42.2mm OD x 150mm LONG	1
GM5319003	40-48.3mm OD x 75mm LONG	1
GM5319006	40-48.3mm OD x 150mm LONG	1
GM5323803	50-60.3mm OD x 75mm LONG	1
GM5323806	50-60.3mm OD x 150mm LONG	1
GM5330003	65-76.0mm OD x 75mm LONG	1
GM5330006	65-76.0mm OD x 150mm LONG	1
GM5335003	80-89.0mm OD x 75mm LONG	1
GM5335006	80-89.0mm OD x 150mm LONG	1
GM5345003	100-114mm OD x 75mm LONG	1
GM5345006	100-114mm OD x 150mm LONG	1
GM54D0153	15-12.7mm OD x 75mm LONG	1
GM54D0156	15-12.7mm OD x 150mm LONG	1
GM54D0203	20-19.5mm OD x 75mm LONG	1
GM54D0206	20-19.5mm OD x 150mm LONG	1
GM54D0253	25-25.4mm OD x 75mm LONG	1
GM54D0256	25-25.4mm OD x 150mm LONG	1
GM54D0323	32-31.7mm OD x 75mm LONG	1
GM54D0326	32-31.7mm OD x 150mm LONG	1
GM54D0403	40-38.1mm OD x 75mm LONG	1
GM54D0406	40-38.1mm OD x 150mm LONG	1
GM54G0153	15-21.3mm OD x 75mm LONG	1
GM54G0156	15-21.3mm OD x 150mm LONG	1
GM54G0203	20-26.7mm OD x 75mm LONG	1
GM54G0206	20-26.7mm OD x 150mm LONG	1
GM54G0253	25-33.4mm OD x 75mm LONG	1
GM54G0256	25-33.4mm OD x 150mm LONG	1
GM54G0323	32-42.2mm OD x 75mm LONG	1
GM54G0326	32-42.2mm OD x 150mm LONG	1



STAINLESS STEEL
REPAIR CLAMPS



STAINLESS STEEL
REPAIR HALF CLAMPS



STAINLESS STEEL
JUNIOR REPAIR CLAMPS
for copper



STAINLESS STEEL
JUNIOR REPAIR CLAMPS
for galv

POLIPLEX BLUELINE

PE80 (MDPE) PN 12.5 MEDIUM DENSITY POLYETHYLENE PRESSURE PIPE AS/NZS 4130

ORDER CODE	SIZE mm	COIL LENGTH m
2500.20PN12.5.25	20	25
2500.20PN12.5.50	20	50
2500.20PN12.5.100	20	100
2500.25PN12.5.25	25	25
2500.25PN12.5.50	25	50
2500.25PN12.5.100	25	100
2500.32PN12.5.25	32	25
2500.32PN12.5.50	32	50
2500.32PN12.5.100	32	100
2500.40PN12.5.25	40	25
2500.40PN12.5.50	40	50
2500.40PN12.5.100	40	100
2500.50PN12.5.25	50	25
2500.50PN12.5.50	50	50
2500.50PN12.5.100	50	100
2500.63PN12.5.25	63	25
2500.63PN12.5.50	63	50
2500.63PN12.5.100	63	100



PN12.5 (1250kPA, 181PSI)
BLUE PIPE

PLASSON SERIES 1 FITTINGS (20-63mm: 16 Bar)

For use with Greenline, Redline, Rural Black, BlueLine, Blackline PN16 and Effluent Pipe

ORDER CODE	SIZE mm	CTN/BAG/EOQ
3501.20	20mm	200 / 50 / 1
3501.25	25mm	160 / 40 / 1
3501.32	32mm	100 / 25 / 1
3501.40	40mm	65 / 1
3501.50	50mm	40 / 1
3501.63	63mm	25 / 1
3503.20.15	20mm x 1/2"	200 / 50 / 1
3503.25.15	25mm x 1/2"	140 / 35 / 1
3503.25.20	25mm x 3/4"	140 / 35 / 1
3503.32.25	32mm x 1"	80 / 20 / 1
3504.20	20mm	140 / 35 / 1
3504.25	25mm	100 / 25 / 1
3504.32	32mm	30 / 15 / 1
3504.40	40mm	45 / 1
3504.50	50mm	30 / 1
3504.63	63mm	14 / 1
3505.25.20	25mm x 20mm x 25mm	120 / 30 / 1
3505.32.20	32mm x 20mm x 32mm	80 / 20 / 1
3505.32.25	32mm x 25mm x 32mm	80 / 20 / 1
3506.20.15	20mm x 1/2"	340 / 85 / 1
3506.25.20	25mm x 3/4"	280 / 70 / 1
3506.32.25	32mm x 1"	200 / 50 / 1
3506.40.32	40mm x 1 1/4"	135 / 1
3506.50.40	50mm x 1 1/2"	90 / 1
3506.63.50	63mm x 2"	45 / 1



90° ELBOW



FEMALE THREADED
TEE



90° TEE



REDUCING TEE



FEMALE THREADED
ADAPTOR

PLASSON SERIES 1 FITTINGS (20-63mm: 16 Bar)

For use with Greenline, Redline, Rural Black, Blueline, Blackline PN16 and Effluent Pipe

ORDER CODE	SIZE mm	CTN/BAG/EOQ
3507.25.20	25mm x 3/4"	240 / 60 / 1
3507.32.25	32mm x 1"	180 / 45 / 1
3508.20.15	20mm x 1/2"	240 / 60 / 1
3508.25.15	25mm x 1/2"	220 / 55 / 1
3508.25.20	25mm x 3/4"	200 / 50 / 1
3508.32.25	32mm x 1"	160 / 40 / 1
3508.50.40	50mm x 1 1/2"	60 / 1
3508.63.50	63mm x 2"	35 / 1
3509.20.15	20mm x 1/2"	160 / 40 / 1
3510.20	20mm	260 / 65 / 1
3510.25	25mm	200 / 50 / 1
3510.32	32mm	120 / 30 / 1
3510.40	40mm	90 / 1
3510.50	50mm	55 / 1
3510.63	63mm	30 / 1
3511.24-28	24-28mm	56 / 1
3511.31-35	31-35mm	40 / 1
3511.40-43	40-43mm	30 / 1
3511.48-51	48-51mm	20 / 1
3511.60-64	60-64mm	10 / 1
3512.25.14-18	25 x 14-18	180 / 5 / 1
3512.25.19-22	25 x 19-22	150 / 5 / 1
3512.25.24-28	25 x 24-28	120 / 5 / 1
3513.20.15	20mm x 1/2"	340 / 85 / 1
3513.25.20	25mm x 3/4"	280 / 70 / 1
3513.32.25	32mm x 1"	200 / 50 / 1
3513.40.32	40mm x 1 1/4"	135 / 1
3513.50.40	50mm x 1 1/2"	90 / 1
3513.63.50	63mm x 2"	50 / 1
3523.25.20	25mm x 20mm	200 / 50 / 1
3523.32.20	32mm x 20mm	160 / 40 / 1
3523.32.25	32mm x 25mm	160 / 40 / 1
3523.40.32	40mm x 32mm	100 / 1
3523.50.25	50mm x 25mm	80 / 1
3523.63.50	63mm x 50mm	35 / 1
3530.20	20mm	360 / 90 / 1
3530.25	25mm	300 / 75 / 1
3530.32	32mm	220 / 55 / 1
3530.40	40mm	150 / 1
3530.50	50mm	100 / 1
3530.63	63mm	55 / 1
Wrench.20.32	20mm x 32mm	300 / 1
Wrench.40.63	40mm x 63mm	100 / 1



90° MALE THREADED ADAPTOR



90° FEMALE THREADED ADAPTOR



FEMALE WINGBACK ADAPTOR



COUPLING



UNIVERSAL SLIP REPAIR COUPLING



UNIVERSAL COUPLING



MALE THREADED ADAPTOR



REDUCING COUPLER



END PLUG



WRENCH

PLASSON COMPRESSION FITTINGS (20-110mm: 16 Bar) unless stated under picture

For use with Greenline, Redline, Rural Black, BlueLine, Blackline PN16 and Effluent Pipe

ORDER CODE	SIZE mm	CTN / BAG QTY
2501.20	20	200 / 10
2501.25	25	150 / 10
2501.32	32	100 / 5
2501.40	40	60
2501.50	50	35
2501.63	63	24
2501.75	75	12
2501.90	90	8
2501.110	110	4
2502.20	20	140 / 10
2502.25	25	100 / 5
2502.32	32	60 / 5
2502.40	40	40
2502.50	50	25
2502.63	63	16
2503.20.15	20 x 1/2"	180 / 10
2503.25.20	25 x 3/4"	140 / 5
2503.32.25	32 x 1"	80 / 5
2503.40.32	40 x 1 1/4"	55
2503.50.40	50 x 1 1/2"	36
2503.63.50	63 x 2"	20
2503.75.65	75 x 2 1/2"	10
2503.90.80	90 x 3"	7
2503.110.100	110 x 4"	4
2504.20	20	120 / 10
2504.25	25	100 / 5
2504.32	32	60 / 5
2504.40	40	40
2504.50	50	25
2504.63	63	16
2504.75	75	8
2504.90	90	5
2504.110	110	2
2505.25.20	25 x 20	100 / 5
2505.32.25	32 x 25	70 / 5
2505.40.32	40 x 32	40
2505.50.40	50 x 40	30
2505.63.50	63 x 50	18
2505.75.63	75 x 63	10
2506.20	20 x 1/2"	350 / 10
2506.25	25 x 3/4"	250 / 10
2506.32	32 x 1"	150 / 5
2506.40	40 x 1 1/4"	110
2506.50	50 x 1 1/2"	70
2506.63	63 x 2"	48
2506.75.65	75 x 2 1/2"	28
2506.90	90 x 3"	16
2506.110	110 x 4"	8
2507.20	20 x 1/2"	350 / 10
2507.25	25 x 3/4"	250 / 10
2507.32	32 x 1"	140 / 5
2507.40	40 x 1 1/4"	90
2507.50	50 x 1 1/2"	55
2507.63	63 x 2"	35
2508.20	20 x 1/2"	350 / 10
2508.25	25 x 3/4"	250 / 10
2508.32	32 x 1"	150 / 5
2508.40	40 x 1 1/4"	90
2508.50	50 x 1 1/2"	60
2508.63	63 x 2"	35
2509.20	20 x 1/2"	150
2509.25	25 x 3/4"	100



90° ELBOW



90° SLIP TEE
40-63mm: 12.5 Bar



FEMALE THREADED TEE
90mm: 10 Bar
110mm: 6 Bar



90° TEE



REDUCING TEE



FEMALE THREADED ADAPTER
90mm: 10 Bar
110mm: 6 Bar



90° MALE THREADED ELBOW



90° FEMALE THREADED ELBOW



FEMALE WINGBACK ADAPTOR

PLASSON COMPRESSION FITTINGS (20-110mm: 16 Bar) unless stated under picture

For use with Greenline, Redline, Rural Black, Blueline, Blackline PN16 and Effluent Pipe

ORDER CODE	SIZE mm	CTN / BAG QTY
2510.20	20	200 / 10
2510.25	25	180 / 10
2510.32	32	100 / 5
2510.40	40	75
2510.50	50	45
2510.63	63	30
2510.75	75	16
2510.90	90	10
2510.110	110	5
2511.20	20	240 / 10
2511.25	25	150 / 10
2511.32	32	80 / 5
2511.40	40	55
2511.50	50	30
2511.63	63	24
2512.25.15-22	25 x 15-22	90
2512.25.20-27	25 x 20-27	80
2512.25.27-35	25 x 27-35	60
2512.32.27-35	32 x 27-35	60
2512.50.35-50	50 x 35-50	20
2513.20	20 x 1/2"	350 / 10
2513.25.15	25 x 1/2"	250 / 10
2513.25	25 x 3/4"	250 / 10
2513.32	32 x 1"	150 / 5
2513.40	40 x 1 1/4"	110
2513.50	50 x 1 1/2"	70
2513.63	63 x 2"	48
2513.75.65	75 x 2 1/2"	28
2513.90	90 x 3"	16
2513.110	110 x 4"	8
2519.25.20	25 x 3/4"	300
2519.32.25	32 x 1"	150
2519.40.25	40 x 1"	150
2519.50.15	50 x 1/2"	100
2519.50.20	50 x 3/4"	100
2519.50.25	50 x 1"	100
2519.50.32	50 x 1 1/4"	100
2519.63.15	63 x 1/2"	70
2519.63.20	63 x 3/4"	70
2519.63.25	63 x 1"	70
2519.63.32	63 x 1 1/4"	70
2519.63.40	63 x 1 1/2"	60
2519.75.25	75 x 1"	55
2519.75.50	75 x 2"	50
2519.90.25	90 x 1"	45
2519.90.50	90 x 2"	40
2519.110.25	110 x 1"	36
2519.110.32	110 x 1 1/4"	36
2519.110.40	110 x 1 1/2"	36
2523.25.20	25 x 20	200 / 10
2523.32.25	32 x 25	120 / 5
2523.40.32	40 x 32	90
2523.50.40	50 x 40	60
2523.63.50	63 x 50	36
2523.75.63	75 x 63	20
2523.90.75	90 x 75	12
2523.110.90	110 x 90	6
2525.63	63	45
2525.110	110	8



COUPLING



SLIP COUPLING



UNIVERSAL COUPLING
50mm: 10 Bar



MALE THREADED
ADAPTER



FEMALE THREADED
BRANCH SADDLE
25-63mm: 12.5 Bar
75-110mm: 10 Bar



REDUCED COUPLING



SHOULDERED ADAPTER

PLASSON COMPRESSION FITTINGS (20-110mm: 16 Bar) unless stated under picture

For use with Greenline, Redline, Rural Black, BlueLine, Blackline PN16 and Effluent Pipe

ORDER CODE	SIZE mm	CTN / BAG QTY
2524.25.20	25 x 20	300 / 10
2524.32.20	32 x 20	300 / 10
2524.32.25	32 x 25	250 / 10
2524.40.25	40 x 25	180 / 10
2524.40.32	40 x 32	200 / 10
2524.50.25	50 x 25	120 / 5
2524.50.32	50 x 32	120 / 5
2524.50.40	50 x 40	120 / 5
2524.63.25	63 x 25	80
2524.63.32	63 x 32	80
2524.63.40	63 x 40	80
2524.63.50	63 x 50	80
2524.75.63	75 x 63	70
2524.110.63	110 x 63	24
2524.110.75	110 x 75	20
2524.110.90	110 x 90	20
<hr/>		
2530.20	20	2500 / 10
2530.25	25	1500 / 10
2530.32	32	1000 / 10
2530.40	40	720 / 10
2530.50	50	400 / 10
2530.63	63	200 / 10
<hr/>		
2531.20	20	350
2531.25	25	250
2531.32	32	180
2531.40	40	110
2531.50	50	75
2531.63	63	45
2531.75	75	28
2531.90	90	16
2531.110	110	10
<hr/>		
2536.63.25	63 x 25	40
2536.110.25	110 x 25	20
2536.125.25	125 x 25	16
2536.125.32	125 x 32	16
2536.180.25	180 x 25	8
2536.180.32	180 x 32	8
<hr/>		
2536.122.25	122 x 25	16
2536.177.25	177 x 25	8
<hr/>		
2540.50.4P*	50	1
2540.50.6P**	50	4

*4 Port
**6 Port



REDUCING SET
110mm x 75mm: 10 Bar
110mm x 90mm: 10 Bar



PLUG ADAPTER
12.5 Bar



END PLUG



TAPPER SWIVEL TEE FOR PE PIPE



TAPPER SWIVEL TEE FOR SERIES 2 PVC PIPE



CENTRE CONNECTION METER MANIFOLD

PLASSON COMPRESSION FITTINGS (20-110mm: 16 Bar) unless stated under picture

For use with Greenline, Redline, Rural Black, Blueline, Blackline PN16 and Effluent Pipe

ORDER CODE	SIZE mm	CTN / BAG QTY
2572.25.15	25 x 1/2"	200
2572.25.20	25 x 3/4"	200
2572.32.15	32 x 1/2"	180
2572.32.20	32 x 3/4"	180
2572.32.25	32 x 1"	180
2572.40.25	40 x 1"	130
2572.40.32	40 x 1 1/4"	130
2572.40.40	40 x 1 1/2"	130
2572.50.25	50 x 1"	80
2572.50.32	50 x 1 1/4"	80
2572.50.40	50 x 1 1/2"	80
2572.50.50	50 x 2"	80
2572.63.25	63 x 1"	60
2572.63.32	63 x 1 1/4"	60
2572.63.40	63 x 1 1/2"	60
2572.63.50	63 x 2"	60
2572.63.65	63 x 2 1/2"	60
2572.75.40	75 x 1 1/2"	30
2572.75.50	75 x 2"	30
2572.75.65	75 x 2 1/2"	30
2572.75.80	75 x 3"	30
2579.20	20	300 / 10
2579.25	25	250 / 10
2579.32	32	180 / 5
2579.40	40	100 / 5
2579.50	50	70
2579.63	63	45
20mm Plasson Insert	20	2520 / 40
25mm Plasson Insert	25	1680 / 40
32mm Plasson Insert	32	920 / 40
40mm Plasson Insert	40	480 / 20
50mm Plasson Insert	50	240 / 20
63mm Plasson Insert	63	110 / 10



**BARREL UNION
THREADED MALE
ADAPTOR**
75mm: 12.5 Bar



MODULAR ADAPTOR



INSERTS

PLASSON THREADED FITTINGS Refer under pictures for PN ratings

ORDER CODE	SIZE	CTN / BAG QTY
2514.15	1/2"	700 / 10
2514.20	3/4"	500 / 10
2514.25	1"	260 / 10
2514.32	1 1/4"	140 / 5
2514.40	1 1/2"	90 / 5
2514.50	2"	60 / 5
2515.15	1/2"	1000 / 10
2515.20	3/4"	700 / 10
2515.25	1"	400 / 10
2515.32	1 1/4"	200 / 10
2515.40	1 1/2"	150 / 5
2515.50	2"	80 / 5
2516.15	1/2"	2000 / 10
2516.20	3/4"	1300 / 10
2516.25	1"	800 / 10
2516.32	1 1/4"	400 / 10
2516.40	1 1/2"	300 / 5
2516.50	2"	180 / 5
2517.20.15	3/4" x 1/2"	2000 / 10
2517.25.15	1" x 1/2"	1200 / 10
2517.25.20	1" x 3/4"	1000 / 10
2517.32.15	1 1/4" x 1/2"	700 / 10
2517.32.20	1 1/4" x 3/4"	700 / 10
2517.32.25	1 1/4" x 1"	700 / 10
2517.40.15	1 1/2" x 1/2"	600 / 10
2517.40.20	1 1/2" x 3/4"	600 / 10
2517.40.25	1 1/2" x 1"	500 / 10
2517.40.32	1 1/2" x 1 1/4"	500 / 10
2517.50.15	2" x 1/2"	350 / 5
2517.50.20	2" x 3/4"	350 / 5
2517.50.25	2" x 1"	300 / 5
2517.50.32	2" x 1 1/4"	320 / 5
2517.50.40	2" x 1 1/2"	320 / 5
2517.65.50	2 1/2" x 2"	200 / 5
2517.80.25	3" x 1"	150 / 2
2517.80.32	3" x 1 1/4"	150 / 2
2517.80.40	3" x 1 1/2"	150 / 2
2517.80.50	3" x 2"	100 / 2
2517.80.65	3" x 2 1/2"	150 / 2
2517.100.50	4" x 2"	80 / 2
2517.100.80	4" x 3"	80 / 2
2518.20.15	3/4" x 1/2"	1500 / 10
2518.25.15	1" x 1/2"	800 / 10
2518.25.20	1" x 3/4"	800 / 10
2518.32.15	1 1/4" x 1/2"	500 / 10
2518.32.20	1 1/4" x 3/4"	500 / 10
2518.32.25	1 1/4" x 1"	500 / 10
2518.40.15	1 1/2" x 1/2"	500 / 5
2518.40.20	1 1/2" x 3/4"	500 / 5
2518.40.25	1 1/2" x 1"	400 / 5
2518.40.32	1 1/2" x 1 1/4"	400 / 5
2518.50.15	2" x 1/2"	280 / 5
2518.50.20	2" x 3/4"	260 / 5
2518.50.25	2" x 1"	260 / 5
2518.50.32	2" x 1 1/4"	240 / 5
2518.50.40	2" x 1 1/2"	240 / 5
2521.15	1/2"	1200 / 10
2521.20	3/4"	1000 / 10
2521.25	1"	600 / 10
2521.32	1 1/4"	250 / 10
2521.40	1 1/2"	250 / 10
2521.50	2"	150 / 5
2530T.15	1/2"	2500 / 10
2530T.20	3/4"	1500 / 10
2530T.25	1"	1000 / 10
2530T.32	1 1/4"	700 / 10
2530T.40	1 1/2"	500 / 10
2530T.50	2"	300 / 10



THREADED TEE
1/2"-1": 16 Bar
1 1/4"-2": 10 Bar



THREADED ELBOW
1/2"-1": 16 Bar
1 1/4"-2": 10 Bar



THREADED NIPPLE
16 Bar



THREADED REDUCING BUSH
1/2"-1": 16 Bar
1 1/4"-4": 10 Bar



THREADED REDUCING NIPPLE
16 Bar



THREADED SOCKET
1/2"-1": 16 Bar
1 1/4"-2": 10 Bar



THREADED PLUG
16 Bar

PLASSON ACCESSORIES

ORDER CODE	SIZE mm	CTN / BAG QTY
2550.40.75	40 - 75	75
2550.63.125	63 - 125	20
2555.20.63	20 - 63	64



WRENCH



CHAMFERING TOOL

PLASSON POLYPROPYLENE VALVES

ORDER CODE	SIZE mm	CTN / BAG QTY
2711	3/4"	130 / 5
2712	1"	130 / 5
2713		250 / 5
2720.25	25	800 / 5
2731	3/4"	140 / 5
2732	1"	120 / 5
2735.32	1 1/4"	40
2735.40	1 1/2"	24
2735.50	2"	15
2741.20	20	100 / 5
2741.25	25	80 / 5
2741.32	32	60 / 5



QUICK COUPLING VALVE
10 Bar



RISER KEY



CHECK VALVE INSERT
16 Bar



VALVE
10 Bar



ANGLE SEAT VALVE
8 BAR



COMPRESSION STOPCOCK
16 Bar

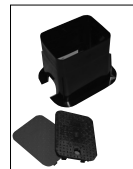
POLYETHYLENE VALVE BOXES

ORDER CODE	SIZE mm	QTY
193*	155 x 200 x 200 high	10
193LIDGR**	155 x 200	80
193LIDBL***	155 x 200	80

*Valve box only – no lid

**Green lid

***Blue lid



POLYETHYLENE (WATER
METER) VALVE BOXES

POLIPLEX 100 PE100 (HPPE) HIGH PERFORMANCE POLYETHYLENE PRESSURE PIPE AS/NZS 4130

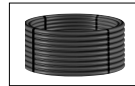
ORDER CODE	SIZE mm	LENGTH m
3500.110PN10.12B	110	12
3500.160PN10.6B	160	6
3500.160PN10.12B	160	12
3500.180PN10.12B	180	12
3500.200PN10.12B	200	12
3500.225PN10.12B	225	12
3500.250PN10.12B	250	12
3500.280PN10.12B	280	12
3500.315PN10.12B	315	12
3500.355PN10.12B	355	12
3500.400PN10.12B	400	12
3500.450PN10.12B	450	12
3500.500PN10.12B	500	12
3500.560PN10.12B	560	12
3500.630PN10.12B	630	12
<hr/>		
3500.125PN12.5.12CXBLUE	125	12
3500.180PN12.5.12CXBLUE	180	12
3500.250PN12.5.12CXBLUE	250	12
3500.315PN12.5.12CXBLUE	315	12
3500.355PN12.5.12CXBLUE	355	12
<hr/>		
3500.125PN12.5.100CXBLUE	125	100
<hr/>		
3500.125PN16.12CXBLUE	125	12
3500.180PN16.12CXBLUE	180	12



SDR 17
PN10 (1000 kPa, 150 PSI)
BLACK PIPE



SDR 13.6
PN12.5 (1250 kPa, 181 PSI)
BLUE PIPE



SDR 13.6
PN12.5 (1250 kPa, 181 PSI)
BLUE PIPE



SDR 11
PN16 (1600 kPa, 232 PSI)
BLUE PIPE

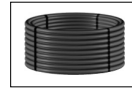
Note: For all products 12 metre lengths or longer, freight costs are POA. Some large bore 12m polyethylene products are not necessarily held in stock and manufacture may be subject to the quantity requested being viable to run. For clarification please contact Sales Support 0800 800 262.

AGRICULTURAL SYSTEMS

**ALKATHENE
EFFLUENT PIPE
NOVATUBE
GREENLINE
REDLINE™
RURAL BLACK
BLACKLINE PIPE
BLACKLINE FITTINGS
NEXUSFLO™
NEXUSCOIL™
NOVAFLO™
NOVACOIL
NEXUS™ CULVERT
FARMTUFF™**

ALKATHENE Low Density Polyethylene Pressure Pipe

ORDER CODE	SIZE mm	PRESSURE RATING Bar	COIL LENGTH m
300.15.25	15	9.7	25
300.15.50	15	9.7	50
300.15.100	15	9.7	100
300.15.200	15	9.7	200
300.20.25	20	9	25
300.20.50	20	9	50
300.20.100	20	9	100
300.20.200	20	9	200
300.25.25	25	8	25
300.25.50	25	8	50
300.25.100	25	8	100
300.25.200	25	8	200
300.32.25	32	7	25
300.32.50	32	7	50
300.32.100	32	7	100
300.32.200	32	7	200
300.40.25	40	6	25
300.40.50	40	6	50
300.40.100	40	6	100
300.40.200	40	6	200
300.50.25	50	5	25
300.50.50	50	5	50
300.50.100	50	5	100
300.50.200	50	5	200



BLACK PIPE

IRRIPOD PIPE Low Density Polyethylene Pasture Irrigation Pipe

ORDER CODE	SIZE mm	PRESSURE RATING Bar	COIL LENGTH m
IRRIPOD45100	45	5	100
IRRIPOD45200	45	5	200



BLACK PIPE

EFFLUENT PVC-U Pipe

ORDER CODE	SIZE mm	PACK QTY
Z822.80PN6.6 LILAC	80 x 6	60
Z822.100PN6.6 LILAC	100 x 6	40
Z822.80PN8.6 LILAC	80 x 6	60
Z822.100PN8.6 LILAC	100 x 6	40



RUBBER RING JOINT

EFFLUENT Polyethylene Pipe

EFFLUENT PN6.3

ORDER CODE	SIZE mm	PRESSURE RATING Bar	COIL LENGTH m
2200.63PN6.3.50	63	6.3	50
2200.63PN6.3.100	63	6.3	100
2200.75PN6.3.50	75	6.3	50
2200.75PN6.3.100	75	6.3	100
2200.90PN6.3.50	90	6.3	50
2200.90PN6.3.100	90	6.3	100



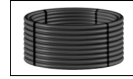
BLACK PIPE WITH LILAC STRIPES

EFFLUENT PN8

ORDER CODE	SIZE mm	PRESSURE RATING Bar	COIL LENGTH m
2200.75PN8.50	75	8	50
2200.75PN8.100	75	8	100
2200.90PN8.50	90	8	50
2200.90PN8.100	90	8	100
2200.110PN8.50	110	8	50
2200.110PN8.100	110	8	100

NOVATUBE Horticultural Lateral Tube

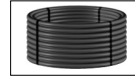
ORDER CODE	SIZE mm	PRESSURE RATING Bar	COIL LENGTH m
350.13.100	13	5	100
350.13.400	13	5	400
350.16.100	16	5	100
350.16.400	16	5	400
350.19.100	19	5	100
350.19.300	19	5	300
350.25.100	25	5	100
350.25.200	25	5	200



BLACK PIPE

GREENLINE Polyethylene Pressure Pipe

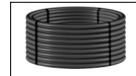
ORDER CODE	NOMINAL SIZEmm	PRESSURE RATING Bar	COIL LENGTH m
370.20PN9.50	20	9	50
370.20PN9.100	20	9	100
370.20PN9.200	20	9	200
370.25PN8.50	25	8	50
370.25PN8.100	25	8	100
370.25PN8.200	25	8	200
370.32PN8.50	32	8	50
370.32PN8.100	32	8	100
370.32PN8.200	32	8	200
370.40PN6.3.50	40	6.3	50
370.40PN6.3.100	40	6.3	100
370.40PN6.3.200	40	6.3	200
370.50PN6.3.50	50	6.3	50
370.50PN6.3.100	50	6.3	100
370.50PN6.3.200	50	6.3	200
370.63PN6.3.50	63	6.3	50
370.63PN6.3.100	63	6.3	100
370.63PN6.3.200	63	6.3	200



BLACK PIPE WITH GREEN STRIPES

REDLINE Polyethylene Pressure Pipe

ORDER CODE	NOMINAL SIZEmm	PRESSURE RATING Bar	COIL LENGTH m
360.20PN12.5.50	20	12.5	50
360.20PN12.5.100	20	12.5	100
360.20PN12.5.200	20	12.5	200
360.25PN12.5.50	25	12.5	50
360.25PN12.5.100	25	12.5	100
360.25PN12.5.200	25	12.5	200
360.32PN9.50	32	9	50
360.32PN9.100	32	9	100
360.32PN9.200	32	9	200
360.40PN9.50	40	9	50
360.40PN9.100	40	9	100
360.40PN9.200	40	9	200
360.50PN9.50	50	9	50
360.50PN9.100	50	9	100
360.50PN9.200	50	9	200
360.63PN9.50	63	9	50
360.63PN9.100	63	9	100
360.63PN9.200	63	9	200



BLACK PIPE WITH RED STRIPES

RURAL BLACK Polyethylene Riser Pipe

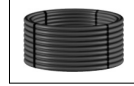
ORDER CODE	NOMINAL SIZE mm	PRESSURE RATING Bar	LENGTH m
340.32PN12.5.6	32	12.5	6
340.50PN12.5.6	50	12.5	6
340.63PN12.5.6	63	12.5	6



RISER PIPE

RURAL BLACK Polyethylene Pressure Pipe

ORDER CODE	NOMINAL SIZE mm	PRESSURE RATING Bar	COIL LENGTH m
340.32PN12.5.50	32	12.5	50
340.32PN12.5.100	32	12.5	100
340.32PN12.5.200	32	12.5	200
340.40PN12.5.50	40	12.5	50
340.40PN12.5.100	40	12.5	100
340.40PN12.5.200	40	12.5	200
340.50PN12.5.50	50	12.5	50
340.50PN12.5.100	50	12.5	100
340.50PN12.5.200	50	12.5	200
340.63PN12.5.50	63	12.5	50
340.63PN12.5.100	63	12.5	100
340.63PN12.5.200	63	12.5	200
340.75PN12.5.50	75	12.5	50
340.75PN12.5.100	75	12.5	100
340.90PN12.5.50	90	12.5	50
340.90PN12.5.100	90	12.5	100
340.110PN12.5.50	110	12.5	50
340.110PN12.5.100	110	12.5	100



BLACK PIPE

BLACKLINE High Performance Polyethylene Pressure Pipe

BLACKLINE PN16

ORDER CODE	NOMINAL SIZEmm	PRESSURE RATING Bar	COIL LENGTH m
3500.25PN16.25BTS	25	16	25
3500.25PN16.50BTS	25	16	50
3500.25PN16.100BTS	25	16	100
3500.32PN16.25BTS	32	16	25
3500.32PN16.50BTS	32	16	50
3500.32PN16.100BTS	32	16	100
3500.40PN16.25BTS	40	16	25
3500.40PN16.50BTS	40	16	50
3500.40PN16.100BTS	40	16	100
3500.50PN16.25BTS	50	16	25
3500.50PN16.50BTS	50	16	50
3500.50PN16.100BTS	50	16	100
3500.63PN16.25BTS	63	16	25
3500.63PN16.50BTS	63	16	50
3500.63PN16.100BTS	63	16	100
3500.75PN16.50BMS	75	16	50
3500.75PN16.100BMS	75	16	100
3500.90PN16.50BMS	90	16	50
3500.90PN16.100BMS	90	16	100
3500.110PN16.50BMS	110	16	50
3500.110PN16.100BMS	110	16	100

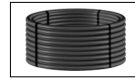


BLACK PIPE WITH BLUE STRIPES

BLACKLINE High Performance Polyethylene Pressure Pipe

BLACKLINE HP PN20

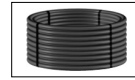
ORDER CODE	NOMINAL SIZEmm	PRESSURE RATING Bar	COIL LENGTH m
3500.63PN20.50B	63	20	50
3500.63PN20.100B	63	20	100
3500.90PN20.50B	90	20	50
3500.90PN20.100B	90	20	100
3500.110PN20.50B	110	20	50
3500.110PN20.100B	110	20	100



BLACK PIPE

BLACKLINE HP PN25

ORDER CODE	NOMINAL SIZEmm	PRESSURE RATING Bar	COIL LENGTH m
3500.63PN25.50B	63	25	50
3500.63PN25.100B	63	25	100
3500.90PN25.50B	90	25	50
3500.90PN25.100B	90	25	100
3500.110PN25.50B	110	25	50
3500.110PN25.100B	110	25	100



BLACK PIPE

BLACKLINE HP DUCTILE IRON (DI) FITTINGS

For use with Blackline PN20 and PN25 Pipe

ORDER CODE	SIZEmm	QUANTITY
DIC63PE	63mm	12
DIC90PE	90mm	6
DIC110PE	110mm	4



DUCTILE IRON COUPLING
PN25

DITC63PE	63mm	14
DITC90PE	90mm	10
DITC110PE	110mm	6



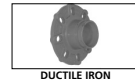
DUCTILE IRON
TRANSITION COUPLING
PN25

SSMTA50	63mm x 50mm BSP	1
SSMTA80	90mm x 80mm BSP	1
SSMTA100	110mm x 100mm BSP	1



STAINLESS STEEL MALE
THREADED ADAPTOR
PN25

ORDER CODE	SIZEmm	PCD (mm)	QUANTITY
DIUFA50	63mm x 50mm flange	120-125	1
DIUFA80	90mm x 80mm flange	150-160	1
DIUFA100	110mm x 100mm Flange	175-191	1



DUCTILE IRON
UNIVERSAL FLANGED
ADAPTOR PN25

NEXUSFLO Land Drainage Systems Twin Wall Smooth Bore PE Punched

ORDER CODE	SIZE mm	LENGTH m
NEXUS11015	110	15
NEXUS11030	110	30
NEXUS11050	110	50
NEXUS110100	110	100
NEXUS110450	110	450
NEXUS16045	160	45
NEXUS160185	160	185
NEXUS2005	200	5
NEXUS20029	200	29
NEXUS200120	200	120



BLACK PIPE WITH BLUE STRIPE SUPPLIED WITH PUSH FIT COUPLER

NEXUSCOIL Twin Wall Smooth Bore PE Unpunched

ORDER CODE	SIZE mm	LENGTH m
NEXUSCOIL11015	110	15
NEXUSCOIL11030	110	30
NEXUSCOIL11050	110	50
NEXUSCOIL110100	110	100
NEXUSCOIL110450	110	450
NEXUSCOIL16045	160	45
NEXUSCOIL160185	160	185
NEXUSCOIL20029	200	29
NEXUSCOIL200120	200	120



BLACK PIPE WITH YELLOW STRIPE SUPPLIED WITH PUSH FIT COUPLER

NOVAFLO Land Drainage Systems Single Wall Corrugated Bore PE Punched

ORDER CODE	SIZE mm	COIL LENGTH m
400.065.15*	65	15
400.065.30*	65	30
400.065.150	65	150
400.110.15	110	15
400.110.30	110	30
400.110.50	110	50
400.110.100	110	100
400.110.450	110	450
400.160.15	160	15
400.160.45	160	45
400.160.185	160	185

*Sold only in bundles of 4 coils



BLACK PIPE SUPPLIED WITH PUSH FIT COUPLER

NOVACOIL Single Wall Corrugated Bore PE Unpunched

ORDER CODE	SIZE mm	COIL LENGTH m
500.065.15	65	15
500.065.30	65	30
500.065.150	65	150
500.110.15	110	15
500.110.30	110	30
500.110.100	110	100
500.160.15	160	15
500.160.45	160	45



BLACK PIPE WITH WHITE STRIPE SUPPLIED WITH PUSH FIT COUPLER

NEXUS/NOVAFLO FITTINGS

ORDER CODE	SIZE mm	CTN QTY
104.100.45	110	12
704.150.45	160	4
704.150.100.45	160 x 110	5
<hr/>		
410.065	65	234
<hr/>		
420.110	110	40
420.160	160	12
420.200	200	10
420.250	250	1
<hr/>		
123.150.1005	160 x 110	1
<hr/>		
430.110	110	1
430.160	160	1



45° JUNCTION



COUPLER



COUPLER



LEVEL INVERT



END PLUG

NEXUS CULVERT Twin Wall Smooth Bore Heavy Duty PE Culvert Pipe

ORDER CODE	SIZE mm x LENGTH m	PACK QTY
NEXUSCULVERT1105	110 x 5	1
NEXUSCULVERT1605	160 x 5	1
NEXUSCULVERT2005	200 x 5	1
NEXUSCULVERT2506	250 x 6	1
NEXUSCULVERT3156	315 x 6	6
NEXUSCULVERT4006	400 x 6	2
NEXUSCULVERT5006	500 x 6	2



BLACK PIPE WITH
BROWN STRIPE
SOCKETED ONE END

FARMTUFF PVC-U CULVERT PIPE

ORDER CODE	SIZE mm x LENGTH m	PACK QTY
550.110.5 SOE	110 x 5	67
550.160.5 SOE	160 x 5	28
550.200.3 SOE	200 x 3	20
550.200.5 SOE	200 x 5	20
550.200.6 SOE	200 x 6	20
550.250.3 SOE	250 x 3	12
550.250.5 SOE	250 x 5	12
550.250.6 SOE	250 x 6	12
550.315.3 SOE	315 x 3	6
550.315.5 SOE	315 x 5	6
550.315.6 SOE	315 x 6	6
550.400.3 SOE	400 x 3	6
550.400.5 SOE	400 x 5	6
550.400.6 SOE	400 x 6	6
550.500.3 SOE	500 x 3	2
550.500.5 SOE	500 x 5	2
550.500.6 SOE	500 x 6	2

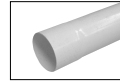


SOLVENT CEMENT JOINT

RAINWATER SYSTEMS

PVC-U RAINWATER SYSTEMS 65mm & 80mm DOWNPIPE & FITTINGS

ORDER CODE	SIZE mm	PACK / CTN QTY
RP65.3SOE	65 x 3m	192 / 12*
RP80.3SOE	80 x 3m	135 / 9**
*Available in bundles of 12		
**Available in bundles of 9		
RWB.65.95	65 x 95°	15
RWB.80.95	80 x 95°	15
RWB.65.112	65 x 112°	15
RWB.80.112	80 x 112°	10
RWJ.65.95	65 x 95°	15
RWJ.80.95	80 x 95°	10
DPC.65	65	80
DPC.80	80	80 / 10
DPA.65.90	65 x 90	75
DPA.80.90	80 x 90	65
RWSOC.65	65	55
RWSOC.80	80	35
GP.80	80	130
RSC.150	150ml	10



DOWNPIPE



SOCKET BEND



JUNCTION



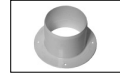
PIPE CLIPS



DOWNPIPE ADAPTOR



DOWNPIPE SOCKETS



GUTTER POP



SOLVENT CEMENT

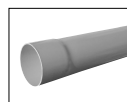
TELECOMMUNICATIONS, ELECTRICAL DUCT & GAS SYSTEMS

**PVC-U ELECTRICAL DUCT
PVC-U ELECTRICAL FITTINGS
ELECTRICAL CONDUIT
SOLAR CONDUIT
PE ELECTRICAL DUCT
TELECOMMUNICATIONS DUCT
TELECOMMUNICATIONS FITTINGS
POLigas™**

ELECTRICAL CABLE DUCT

PVC-U ELECTRICAL CABLE DUCT (ORANGE)

ORDER CODE	SIZE mm x LENGTH m	PACK QTY
2700.32.6 SOE	32 x 6	240 / 10
2700.40.6 SOE	40 x 6	180 / 10
2700.50.6 SOE	50 x 6	150 / 5
2700.65.6 SOE	65 x 6	102
2700.80LD.6 SOE	80 x 6	88
2700.100LD.6 SOE	100 x 6	67
2700.150LD.6 SOE	150 x 6	28
2700.100HD.6 SOE	100 x 6	67
2700.150HD.6 SOE	150 x 6	28



SOCKET ONE END
(ORANGE)

PVC-U ELECTRICAL CABLE DUCT BENDS (ORANGE)

ORDER CODE	SIZE mm	QTY
2703.50.45	50 x 45°	15
2703.50.90	50 x 90°	30
2703.80.45	80 x 45°	12
2703.80.90	80 x 90°	8
2703.100.45R250	100 x 45° ROD* 250mm	8
2703.100.90R250	100 x 90° ROD* 250mm	7
2703.100.90R900	100 x 90° ROD* 900mm	3

*Radius of Diameter

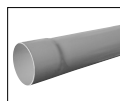


FORMED ELECTRICAL
BENDS F&F

CONDUIT

PVC-U ELECTRICAL CONDUIT (GREY)

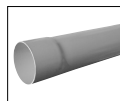
ORDER CODE	SIZE mm x LENGTH m	PACK QTY
2800.20.4 SOE	20 x 4	500 / 10
2800.25.4 SOE	25 x 4	320 / 10
2800.32.4 SOE	32 x 4	240 / 10
2800.40.4 SOE	40 x 4	180 / 10
2800.50.4 SOE	50 x 4	150 / 5



SOCKET ONE END
(GREY)

PVC-U ELECTRICAL CONDUIT (ORANGE)

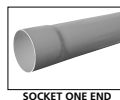
ORDER CODE	SIZE mm x LENGTH m	PACK QTY
2850.20.4 SOE	20 x 4	500 / 10
2850.25.4 SOE	25 x 4	320 / 10
2850.32.4 SOE	32 x 4	240 / 10
2850.40.4 SOE	40 x 4	180 / 10
2850.50.4 SOE	50 x 4	150 / 5



SOCKET ONE END
(ORANGE)

PVC-U SOLAR CONDUIT HEAVY DUTY (GREY)

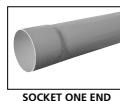
ORDER CODE	SIZE mm x LENGTH m	PACK QTY
2800.20HD.4 SOE SOLAR	20 x 4	500 / 10
2800.25HD.4 SOE SOLAR	25 x 4	320 / 10
2800.32HD.4 SOE SOLAR	32 x 4	240 / 10



SOCKET ONE END
(GREY)

PVC-U ELECTRICAL CONDUIT HEAVY DUTY (ORANGE)

ORDER CODE	SIZE mm x LENGTH m	PACK QTY
2850.20HD.4 SOE	20 x 4	500 / 10
2850.25HD.4 SOE	25 x 4	320 / 10
2850.32HD.4 SOE	32 x 4	240 / 10
2850.40HD.4 SOE	40 x 4	180 / 10
2850.50HD.4 SOE	50 x 4	150 / 5



SOCKET ONE END
(ORANGE)

POLYETHYLENE ELECTRICAL CABLE DUCT

COILED PE ELECTRICAL CABLE DUCT SDR17 (ORANGE)

ORDER CODE	SIZE mm	COIL LENGTH m
CABLE DUCT OR 32/28.200	32	200
CABLE DUCT OR 32/28.500	32	500
CABLE DUCT OR 50/44.100	50	100
CABLE DUCT OR 50/44.200	50	200
CABLE DUCT OR 63/55.100	63	100
CABLE DUCT OR 63/55.150	63	150
CABLE DUCT OR 90/79.50	90	50
CABLE DUCT OR 90/79.100	90	100
CABLE DUCT OR 110/97.50	110	50
CABLE DUCT OR 110/97.100	110	100
CABLE DUCT OR 125/110.100	125	100



(ORANGE)

TELECOMMUNICATION CABLE DUCT

PVC-U TELECOMMUNICATION DUCT (Chorus Branded)

ORDER CODE	COLOUR	SIZE mm	PACK QTY
10012937	GREEN	20mm x 6m	150
10013281	WHITE	20mm x 6m	150 / 10
P4001	GREEN	50mm x 6m	123
P4000	GREEN	100mm x 6m	67



SOLVENT CEMENT & RUBBER RING JOINT

PVC-U TELECOMMUNICATION REPAIR SLEEVE (Chorus Branded)

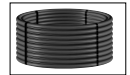
ORDER CODE	COLOUR	SIZE mm x LENGTH m	QTY
10013103	GREEN	50mm x 2m	123
10013102	GREEN	100mm x 2m	48



PLAIN END SLEEVE

COILED PE TELECOMMUNICATION DUCT (Chorus Branded)

ORDER CODE	COLOUR	SIZE mm	COIL LENGTH m
20021793	GREEN	20mm	200m
10012829	BLACK with RED TRI-STRIPE	32mm	1000m
10012829500	BLACK with RED TRI-STRIPE	32mm	500m
10012830	BLACK with GREEN TRI-STRIPE	32mm	1000m
10012830500	BLACK with GREEN TRI-STRIPE	32mm	500m
10012831	BLACK with VIOLET TRI-STRIPE	32mm	1000m
10012831500	BLACK with VIOLET TRI-STRIPE	32mm	500m
10012832	BLACK with BROWN TRI-STRIPE	32mm	1000m
10012832500	BLACK with BROWN TRI-STRIPE	32mm	500m



TELECOMMUNICATION BENDS

PVC-U TELECOMMUNICATION BENDS (Chorus Branded)

ORDER CODE	COLOUR	SIZE mm	QTY
10012582	GREEN	20mm x 90° ROD* 240	100
10013280	GREEN	20mm x 90° ROD* 400	7
10012939	GREEN	20mm x 90° ROD* 530	6
10013279	WHITE	20mm x 90° ROD* 100	200
10012940	WHITE	20mm x 90° ROD* 300	50
10013084	GREEN	50mm x 30° ROD*350	10
10013087	GREEN	50mm x 45° ROD*200	10
10013086	GREEN	50mm x 45° ROD*350	8
10013100	GREEN	50mm x 45° ROD*900	5
10013088	GREEN	50mm x 90° ROD*350	6
10013099	GREEN	50mm x 90° ROD*900	3
10013098	GREEN	100mm x 22° ROD*900	6
10013091	GREEN	100mm x 30° ROD*300	8
10013093	GREEN	100mm x 45° ROD*300	7
10011337**	GREEN	100mm x 90° ROD*350	7
10013095	GREEN	100mm x 90° ROD*400	5
10013094	GREEN	100mm x 90° ROD*600	4
10013096	GREEN	100mm x 90° ROD*900	3

*Radius of Diameter

**F&F Bend



20MM FORMED BEND



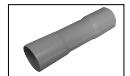
50MM FORMED BEND
M&F



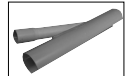
100MM FORMED BEND
M&F

PVC-U TELECOMMUNICATION FITTINGS (Chorus Branded)

ORDER CODE	COLOUR	SIZE mm	QTY
10013109	GREEN	50mm	24
10012938	GREEN	50mm x 20mm	50
P4004	BLACK	50mm	200 / 10
P4005	BLACK	100mm	240



COUPLER



REDUCING SADDLE

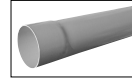


DUST CAP

TELECOMMUNICATION CABLE DUCT

PVC-U TELECOMMUNICATION

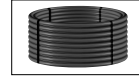
ORDER CODE	COLOUR	SIZE mm	PACK
2780.100LD.6 SOE	GREEN	100 x 6	67
2730.50.6 SOE	RED	50 x 6	150 / 5
2730.100LD.6 SOE	RED	100 x 6	67



SOCKET ONE END

COILED PE TELECOMMUNICATION DUCT SDR17

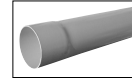
ORDER CODE	COLOUR	SIZE mm	COIL LENGTH m
TELEDUCT PE 32/28.200	GREEN	32	200
TELEDUCT PE 32/28.500	GREEN	32	500
TELEDUCT PE 63/55.100	GREEN	63	100
TELEDUCT PE 63/55.150	GREEN	63	150
TELEDUCT PE 110/97.50	GREEN	110	50
TELEDUCT PE 110/97.100	GREEN	110	100



COILED PE TELECOMMUNICATION DUCT

PVC-U CABLE DUCT

ORDER CODE	COLOUR	SIZE mm x LENGTH m	PACK QTY
CD80020	WHITE	20mm x 6	150



SOCKET ONE END

PVC-U CABLE DUCT BENDS

ORDER CODE	COLOUR	SIZE mm	QTY
CD8032045	WHITE	20 x 45°	200
CD8032090	WHITE	20 x 90°	300

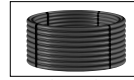


FORMED BENDS F&F

Poliplex POLIgas

POLIgas GAS PIPE PE80 (MDPE) METRIC DIMENSION Manufactured to AS/NZS 4130 Series 2

ORDER CODE	SIZE mm	COIL LENGTH m
230.255SDR11.150	25	150
230.325SDR11.150	32	150



(YELLOW)

POLIgas GAS PIPE PE80 (MDPE) IMPERIAL DIMENSION Manufactured to AS/NZS 4130

ORDER CODE	SIZE mm	COIL or LENGTH m
200.10.150.9 IMP	10	150
200.15.150.9 IMP	15	150
200.20.150.11 IMP	20	150
200.25.150.11 IMP	25	150
200.32.150.11 IMP	32	150
200.50.100.11 IMP	50	100
200.80.12.11 IMP	80	12
200.100.12.11 IMP	100	12



(YELLOW)

*Made to order. Subject to minimum order quantities.

MISCELLANEOUS

**NOVAKEY™ SOLVENT CEMENT
NOVALUBE
MEDLUBE**

MISCELLANEOUS

NOVAKEY SOLVENT CEMENT PRESSURE APPLICATIONS

ORDER CODE	SIZE	CTN QTY
9100.125P*	125ml	10
9100.250P*	250ml	10
9100.500P*	500ml	10
9100.4P	4 litres	4

*Contains internal brush



SOLVENT CEMENT
(BLUE)

NOVAKEY SOLVENT CEMENT NON PRESSURE APPLICATIONS

ORDER CODE	SIZE	CTN QTY
9100.125NP*	125ml	10
9100.250NP*	250ml	10
9100.500NP*	500ml	10
9100.4NP	4 litres	4

*Contains internal brush



SOLVENT CEMENT
(CLEAR)

NOVALUBE PIPE LUBRICANT

ORDER CODE	SIZE	CTN QTY
9136.500	500ml	18
9136.2	2 litres	6
9136.4	4 litres	2

Suitable for use on rubber ring joints in non-potable water pipelines, stormwater and sewer applications.



PIPE LUBRICANT

MED LUBE

ORDER CODE	SIZE	CTN QTY
9137.275	275gm	38
9137.500	500gm	12
9137.2	2kg	6
9137.4	4kg	4

Suitable for use on rubber ring joints in potable water pipelines and pressure applications.



MED LUBE

NOVAKEY CLEANER PRIMER

ORDER CODE	SIZE	CTN QTY
9101.250*	250ml	10

*Contains internal brush

Note: Cleaner primer should be used in conjunction with solvent cement to achieve a good quality joint.



CLEANER PRIMER
(CLEAR)

NOVAKEY CLEANER PRIMER

ORDER CODE	SIZE	CTN QTY
9101C.500*	500ml	10

*Contains internal brush

Note: Cleaner primer should be used in conjunction with solvent cement to achieve a good quality joint. The purple colour provides visual proof of use during the jointing process.



CLEANER PRIMER
(PURPLE)

More Products from Iplex Pipelines

NOVADRAIN

PVC-U DRAIN WASTE & VENT SYSTEMS

RESTRAIN™

DRILLABLE PVC GRAVITY SEWER PIPE

SUPERSTORM™ & STORMFIT

PVC STORMWATER DUCT SYSTEM

AQUACELL

STORMWATER SYSTEM

NEXUS™ HI-WAY

ROAD DRAINAGE SYSTEM

APOLLO™ & APOLLOBLUE™

PVC-O PRESSURE PIPE SYSTEMS

NOVAKEY™

PVC-U PRESSURE PIPE SYSTEMS

WHITE RHINO & BLUE RHINO™

PVC-M HIGH IMPACT PRESSURE PIPE SYSTEMS

BLUELINE

PE 80 POLYETHYLENE PIPE

POLIPLEX

PE 100 POLYETHYLENE PRESSURE PIPE

ALKATHENE™

LOW DENSITY POLYETHYLENE PIPE

NOVATUBE

LDPE HORTICULTURAL LATERAL TUBE

GREENLINE, REDLINE™, RURAL BLACK, BLACKLINE & BLACKLINE HP

PE 100 RURAL POLYETHYLENE PIPE SYSTEMS

ELECTRICAL & TELECOMMUNICATIONS

DUCTING & CONDUIT

PVC & POLYETHYLENE PIPE SYSTEMS

PLASSON

METRIC COMPRESSION FITTINGS

NEXUS™ FLO & NEXUS™ COIL

TWINWALL, SMOOTH BORE, PE LAND DRAINAGE SYSTEMS

NOVAFLO™ & NOVACOIL

CORRUGATED PE AND DRAINAGE SYSTEMS

IPLEX EFFLUENT PIPE

PE 100 POLYETHYLENE PIPE

FARMTUFF™ & NEXUS™ CULVERT

CULVERT PIPE SYSTEMS

RAINWATER SYSTEMS

DOWNPIPE

POLIGAS™

POLYETHYLENE GAS SYSTEMS

Important Disclaimer:

The information, opinions, advice and recommendations contained in this publication are put forward with the main objective of providing a better understanding of technical matters associated with pipeline design using Iplex Pipelines. Whilst all reasonable care has been made in ensuring that the information contained in this publication is accurate, this publication should not be used as the only source of information by the reader. Reference should also be made to established textbooks and other published material, and readers should not rely on the information contained in this publication without taking appropriate professional advice for their particular circumstances. Pipes and fittings have been shown as typical configurations, however, in some cases product dimensions may vary or be changed without notice. In all instances, the reader should contact Iplex Pipelines for clarification that the specific product is appropriate for their circumstances.

iplex.co.nz

Iplex Pipelines NZ Limited
Call 0800 800 262 or Fax 0800 800 804

Auckland: Private Bag 92114, 810 Great South Road, Penrose
Palmerston North: Private Bag 11019, 67 Malden Street
Christchurch: PO Box 16225, 22 Braeburn Drive, Sockburn

© 2018 IPLEX PIPELINES (NZ) LIMITED, POLIDRAIN™, SUPERSTORM™, NEXUS™, TEGRA™, NOVAKEY™, RHINO™, RESTRAIN™, APOLLO™, REDLINE™, NOVAFLO™, FARMTUFF™ and POLIGAS™ are registered trade marks of IPLEX PIPELINES (NZ) LIMITED.