

STORZ[®]
Ophthalmic Instruments

PRODUCT CATALOGUE

Sterile Single Use Instruments for
Cataract and Vitreoretinal Surgery



BAUSCH+LOMB
See better. Live better.



CONTENTS

INTRODUCTION	Page
Single Use Instruments	4-5
CATARACT SURGERY	
Specula	8
Forceps	8
Manipulators	10
CapsuleGuard® Stellaris® System Coaxial I/A Handpieces	11
Stellaris® System Coaxial I/A Handpieces	12
Stellaris® System Biaxial Irrigation	13
Biaxial Aspiration Handpieces	14
Coaxial I/A Handpieces	15-16
Biaxial Irrigation Handpieces	17
VITREORETINAL SURGERY	
Endgripping Forceps	19
Endgripping ILM Forceps	19
Asymmetric Peeling Forceps	20
Serrated Forceps	20
Bipolar Erasers	21-21
Membrane Picks	22
Backflush/Extrusion Handpieces	23
KNIVES	
Clear Corneal Knives	25
Crescent Knives	25
Slit Knives	26
Stab Knives	26
Trapezoidal Knives	27
MVR Knives	27
Sideport Knives	27
CANNULAS	
Cannulas	29-32
TREPHINES	
Trephines	34-36
MISCELLANEOUS	
Protectors, Viscoelastic, Other Accessories	38
INDEX	
Index	40-42

STERILE SINGLE USE INSTRUMENTS DESIGNED FOR SAFETY, CONSISTENCY, CONVENIENCE

For over 120 years, Storz® Ophthalmic Instruments have been recognised around the World for industry leading quality and innovation. Each of our surgical instruments are designed, manufactured and tested with surgeons being involved throughout the entire process. This ensures the instruments delivered from our Manufacturing Centre's of Excellence meet quality and performance expectations.

Sterile single use instruments by Bausch + Lomb Storz® Ophthalmic Instruments

Bausch + Lomb is pleased to introduce this edition catalogue of sterile single use instruments. In this catalogue you will find the Storz® Ophthalmic Instruments product line of high precision sterile single use instruments.

Together with Bausch + Lomb Stellaris Elite®, single use instruments provide surgeons with the tools and technology to perform latest techniques for the treatment of cataracts and vitreoretinal conditions.

Trusted Quality. Leading Design.

Bausch + Lomb's success is underpinned by its ability to maintain hand-crafted excellence, while adapting to an ever changing environment with latest instrument designs.

Sterile single use Bausch + Lomb Storz® Ophthalmic Instruments are designed and manufactured in Heidelberg, Germany, which combines very well with the excellence of Bausch + Lomb's reusable instruments.

The vast in house expertise for manufacturing reusable instruments has been beneficial when designing the single use instrument range. This is owing to the functionality being on a par with the Storz Ophthalmic Instruments.

Quality Management

Bausch + Lomb is renowned and recognised for its high standard of quality manufacturing.

All Bausch + Lomb facilities are certified according to EN ISO 13485 and ISO 9001 as well as according to the European Medical Devices Directive 93/42/EEC, Annex II to ensure compliance with CE marking requirements.

Find us online

For the most up-to date overview of available instruments, visit our website: www.storzeye.com* or storzeye.eu*

* Not all instruments are available in Australia

Why single use?

1. Safety

B + L single use Instruments are delivered sterile and provide optimal protection against infection and cross contamination for every single surgery.

2. Consistent Quality

With B + L single use Instruments you always use a new instrument which ensures consistent quality and performance for each procedure. Instruments are supplied sterile packed and are sterilised in a validated process.

3. Economical

B + L single use Instruments and Per Procedure Trays provide a clear cost allocation that may lead to a reduction in processing costs in the hospital.

4. Properties

B + L single use Instruments are made from a high performance plastic and medical grade stainless steel. The special composition of the instruments provides high quality and efficient mechanical properties for the intended function of each instrument.

5. Ecological

Single use instruments can be disposed of with other clinical waste. Because of health aspects regarding the disposal of microbiological burden, hospital waste is usually incinerated. The materials used for B + L single use instruments do not contain hazardous materials, thus ensuring safe and clean incineration. In addition, the plastic provides energy to maintain the incineration process and saves on the flammables required to burn the waste. Single use instruments may have a lower environmental impact compared to Reusables thanks to savings on disinfectant chemicals, transportation and energy to reprocess reusable instruments.





CATARACT SURGERY



SPECULA

SUH01

Barraquer Eye Speculum

24



- Wire speculum with closed valves.
- 14.0 mm blade length.

SUH04

Adjustable Eye Speculum

6



- Adjustable eye speculum with 16.0 mm solid blades.

FORCEPS

SUE02-12

Bonn Forceps

12



- Straight jaws.
- 1 × 2 teeth 0.12 mm.
- 3.5 mm tying platform.
- For tissue manipulation and bulbus fixation.
- 100.0 mm overall length.

SUE03-12

Tying Forceps, straight

12



- Straight jaws.
- 3.5 mm tying platform.
- 100.0 mm overall length.
- May be used for IOL manipulation and cartridge loading.

SUE04-12

McPherson Tying Forceps

12



- Angled jaws.
- 4.0 mm tying platform.
- 8.5 mm jaw length.
- 98.0 mm overall length.
- May be also used for cartridge loading.

FORCEPS

SUE05-12

Pierse Tying Forceps

12



- Straight jaws.
- 0.25 mm notched.
- 4.0 mm tying platform.
- 100.0 mm overall length.
- For tissue manipulation and bulbus fixation.

SUE01-12

Capsulorhexis Forceps

12



- Angled jaws.
- 11.5 mm jaw length.
- fine sharp tips.
- 100.0 mm overall length.

SUE06-12

MICS Capsulorhexis Forceps

12



- Fine angled tips ideal for grasping delicate capsule during MICS 1.8 mm procedures.
- Angled shafts allow ease of movement in the anterior chamber.

SUE07-12

Capsulorhexis Forceps, with markings

12



- Forceps shafts with markings at 2.75 mm/3.0 mm (radius) and 5.5 mm/6.0 mm (diameter), for determining the diameter for capsulorhexis.
- Fine angled tips ideal for grasping delicate capsule also during MICS 1.8 mm procedures.
- Angled shafts allow ease of movement in the anterior chamber.

SUE08-12

MICS Capsulorhexis Forceps with curved jaws

12



- Fine angled tips ideal for grasping delicate capsule during MICS 1.8 mm procedures.
- Angled curved shafts allow ease of movement in the anterior chamber.

SUI20-12

MICS 1.0 mm Capsulorhexis Forceps

12



- Angled endgripping platforms for grasping delicate capsule.
- 23GA shaft designed for performing capsulorhexis through a 1.0 mm incision.
- Low glare instrument shaft.

MANIPULATORS

SUF01

Koch Stop & Chop Manipulator

12



- Angled shaft with 1.4 mm tip.
- 10.0 mm shaft length.
- Overall length 116.0 mm.
- Designed to efficiently perform the “Stop and Chop” technique.

SUF02

Sinsky Hook

12



- Angled shaft with 0.5 mm tip and 0.18 mm diameter.
- 115.0 mm overall length.
- For lens dialing and manipulation.

SUF03

Phaco Spatula

12



- Angled.
- 11.0 mm spatula length.
- 117.0 mm overall length.
- For nucleus manipulation.

SUF04

Drysdale type Nucleus Manipulator

12



- Flattened paddle tip with generous surface area is ideal for manipulating tissue, rotating and cracking the nucleus.

CAPSULEGUARD® STELLARIS® SYSTEM COAXIAL I/A HANDPIECES

- One-piece silicone construction I/A tip.
- The silicone tip design facilitates cortex removal, capsule polishing, viscoelastic removal and IOL manipulation in the capsular bag.
- Semi-transparent silicone sleeve provides perfect visualisation.

CapsuleGuard IA®

85910ST

CapsuleGuard IA® Handpiece, 45°

12



- Aspiration tip 45°.
- Recommended for use in a 2.2 - 2.8 mm incision.
- Designed with luer-lock design for the Stellaris® System.

85912ST

CapsuleGuard IA® Handpiece, straight

12



- Straight shaft, straight aspiration tip.
- Recommended for use in a 2.2 - 2.8 mm incision.
- Designed with luer-lock design for the Stellaris® System.

85913ST

CapsuleGuard IA® Handpiece, curved

12



- Curved shaft, straight aspiration tip.
- Recommended for use in a 2.2 - 2.8 mm incision.
- Designed with luer-lock design for the Stellaris® System.

85914ST

MICS CapsuleGuard IA® Handpiece, straight

12



- Straight shaft, straight aspiration tip.
- Recommended for use in a sub 2.0 mm incision.
- Designed with luer-lock design for the Stellaris® System.

85915ST

MICS CapsuleGuard IA® Handpiece, 45°

12



- Aspiration tip 45°.
- Recommended for use in a sub 2.0 mm incision.
- Designed with luer-lock design for the Stellaris® System.

STELLARIS® SYSTEM COAXIAL I/A HANDPIECES

85783ST

17GA I/A Handpiece, curved

12



- Curved shaft. Ideal for deep-set eyes.
- 0.3 mm aspiration port.
- Outer diameter 1.5 mm (17GA).
- Designed with luer-lock design for the Stellaris® System.

85784ST

17GA I/A Handpiece, tip 45°

12



- Straight shaft with 45° angled aspiration tip.
- 0.3 mm aspiration port.
- Outer diameter 1.5 mm (17GA).
- Designed with luer-lock design for the Stellaris® System.

85786ST

16GA I/A Handpiece, tip 90°

12

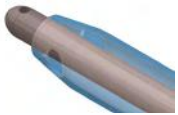


- Straight shaft with 90° angled aspiration tip.
- Ideal for 12 o'clock cortical material removal.
- 0.3 mm aspiration port.
- Outer diameter 1.65 mm (16GA).
- Designed with luer-lock design for the Stellaris® System.

85794ST

I/A Handpiece, curved, with sleeve, for 1.8 C-MICS

12



- Curved shaft with silicone irrigation sleeve.
- For 1.8 mm incision.
- 0.3 mm aspiration port.
- Designed with luer-lock design for the Stellaris® System.

85795ST

I/A Handpiece, with sleeve, tip 90°, for 1.8 C-MICS

12



- 45° angled tip with silicone irrigation sleeve.
- For 1.8 mm incision.
- 0.3 mm aspiration port.
- Designed with luer-lock design for the Stellaris® System.

STELLARIS® SYSTEM BIAXIAL IRRIGATION

**85902ST19****19GA Irrigation Handpiece**

12

- Curved shaft. Smooth tip.
- Two lateral irrigation ports of 0.6 mm Ø.
- Outer diameter 1.07 mm (19GA).
- Designed with luer-lock design for the Stellaris® System.

85807ST**23GA Irrigation Handpiece**

12

- Curved shaft. Smooth tip.
- Two lateral irrigation ports.
- Outer diameter 0.6 mm (23GA).
- Designed with luer-lock design for the Stellaris® System.

85787ST**21GA Irrigation Handpiece**

12

- Curved shaft. Smooth tip.
- Two lateral irrigation ports of 0.6 mm Ø.
- Outer diameter 0.8 mm (21GA).
- Designed with luer-lock design for the Stellaris® System.

BIAXIAL ASPIRATION HANDPIECES

**85901S19****19GA Aspiration Handpiece**

12

- Curved shaft.
- Roughened tip.
- 0.3 mm aspiration port.
- Outer diameter 1.07 mm (19GA).

85792S**23GA Aspiration Handpiece**

12

- Curved shaft.
- Roughened tip.
- 0.3 mm aspiration port.
- Outer diameter 0.6 mm (23GA).

85780S**21GA Aspiration Handpiece**

12

- Curved shaft.
- Roughened tip.
- 0.3 mm aspiration port.
- Outer diameter 0.8 mm (21GA).

COAXIAL I/A HANDPIECES

- One-piece silicone construction I/A tip.
- The silicone tip design facilitates cortex removal, capsule polishing, viscoelastic removal and IOL manipulation in the capsular bag.
- Semi-transparent silicone sleeve provides perfect visualisation.



85910S **CapsuleGuard IA® Handpiece, 45°** 12



- Aspiration tip 45°.
- Recommended for use in a 2.2 – 2.8 mm incision.

85912S **CapsuleGuard IA® Handpiece, straight** 12



- Straight shaft, straight aspiration tip.
- Recommended for use in a 2.2 – 2.8 mm incision.

85913S **CapsuleGuard IA® Handpiece, curved** 12



- Curved shaft, straight aspiration tip.
- Recommended for use in a 2.2 – 2.8 mm incision.

85914S **MICS CapsuleGuard IA® Handpiece, straight** 12



- Straight shaft, straight aspiration tip.
- Recommended for use in a sub 2.0 mm incision.

85915S **MICS CapsuleGuard IA® Handpiece, 45°** 12



- Aspiration tip 45°.
- Recommended for use in a sub 2.0 mm incision.



COAXIAL I/A HANDPIECES

85782S

17GA I/A Handpiece, straight

12



- Straight tip for initial cortical removal.
- 0.3 mm aspiration port.
- Outer diameter 1.5 mm (17GA).

85783S

17GA I/A Handpiece, curved

12



- Curved shaft.
- Ideal for deep-set eyes.
- 0.3 mm aspiration port.
- Outer diameter 1.5 mm (17GA).

85784S

17GA I/A Handpiece, straight, tip 45°

12



- For optimal 360° cortical material removal.
- 0.3 mm aspiration port.
- Outer diameter 1.5 mm (17GA).

85785S

20GA I/A Handpiece, straight with sleeve

12



- Straight tip with silicone irrigation sleeve for standard phaco incision.
- Aspiration cannula 0.9 mm (20GA).
- 0.3 mm aspiration port.

85786S

16GA I/A Handpiece, straight, tip 90°

12



- Straight shaft with 90° angled aspiration tip.
- Ideal for 12 o'clock cortical material removal.
- 0.3 mm aspiration port.
- Outer diameter 1.65 mm (16GA).

BIAXIAL IRRIGATION HANDPIECES

85781S

21GA Irrigation Handpiece, roughened

12



- Curved shaft. Roughened tip.
- Two lateral irrigation ports of 0.6 mm Ø.
- Outer diameter 0.8 mm (21GA).

85787S

21GA Irrigation Handpiece

12



- Curved shaft. Smooth tip.
- Two lateral irrigation ports of 0.6 mm Ø.
- Outer diameter 0.8 mm (21GA).

85807S

23GA Irrigation Handpiece

12



- Curved shaft.
- Smooth tip.
- Two lateral irrigation ports.
- Outer diameter 0.6 mm (23GA).

85791S

23GA Irrigation Handpiece, central port, beveled tip

12



- Curved shaft.
- Central irrigation port.
- Outer diameter 0.67 mm (23GA).



VITREORETINAL SURGERY



ENDGRIPPING FORCEPS

65023S-12

23GA Endgripping Forceps

12



- 23GA single-use end gripping vitreoretinal forceps.
- These forceps are used to peel epiretinal membrane and also ILM.
- Low glare instrument shaft.

65025S-12

25GA Endgripping Forceps

12



- 25GA single-use end gripping vitreoretinal forceps.
- These forceps are used to peel epiretinal membrane and also ILM.
- Low glare instrument shaft.

SUI13-12

27GA Endgripping Forceps

12



- 27GA single-use end gripping vitreoretinal forceps.
- These forceps are used to peel epiretinal membrane and also ILM.
- Low glare instrument shaft.

ENDGRIPPING ILM FORCEPS

SUI07-12

23GA Endgripping ILM Forceps

12



- 23GA end gripping vitreoretinal forceps.
- Specifically designed to remove delicate ILM and epiretinal membrane.
- Low glare instrument shaft.

SUI08-12

25GA Endgripping ILM Forceps

12



- 25GA end gripping vitreoretinal forceps.
- Specifically designed to remove delicate ILM and epiretinal membrane.
- Low glare instrument shaft.

ASYMMETRIC PEELING FORCEPS

SUI03-12

23GA Asymmetric Peeling Forceps

12



- Asymmetric jaw for excellent visualisation of retinal tissue.
- Used for ILM, epiretinal membrane peel, macular puckers and cellophane maculopathy.
- 23GA.

SUI05-12

25GA Asymmetric Peeling Forceps

12



- Asymmetric jaw for excellent visualization of retinal tissue.
- Used for ILM, epiretinal membrane peel, macular puckers and cellophane maculopathy.
- 25GA.

SERRATED FORCEPS

SUI14-12

27GA Serrated Forceps

12



- 27GA serrated vitreoretinal forceps.
- The jaws of these forceps have serrations inside for non-slip gripping.
- Designed for peeling and manipulating thicker and more fibrotic membranes.

BIPOLAR ERASERS

E7928

Bipolar Scleral Eraser

12



- Designed for scleral haemostasis.
- 45° beveled tip.
- Lemos type connector.

E7929

20GA Bipolar Eraser, lemo tapered

12



- Designed for retinal endodiathermy.
- 20GA shaft.
- Conical tip.
- Lemo type connector.

E7930

23GA Bipolar Eraser, lemo tapered

12



- Designed for retinal endodiathermy.
- 23GA shaft.
- Conical tip.
- Lemos type connector.

E7931

23GA Bipolar Eraser, 2pin tapered

12



- Designed for retinal endodiathermy.
- 23GA shaft.
- Conical tip.
- 2-pin connector.

E7926

25GA Bipolar Eraser, lemo tapered

12



- Designed for retinal endodiathermy.
- 25GA shaft.
- Conical tip.
- Lemos type connector.

E7927

25GA Bipolar Eraser, lemo blunt

12



- Designed for retinal endodiathermy.
- 25GA shaft.
- 45° beveled tip.
- Lemos type connector.
- Sterile single-use. 12/box.

E7924

25GA Bipolar Eraser, 2pin tapered

12



- Designed for retinal endodiathermy.
- 25GA shaft.
- Conical tip.
- 2-pin connector.

BIPOLAR ERASERS

E7925

25GA Bipolar Eraser, 2pin blunt

12



- Designed for retinal endodiathermy.
- 25GA shaft.
- 45° beveled tip.
- 2-pin connector.

E7932

27GA Bipolar Eraser, lemo tapered

12



- Designed for retinal endodiathermy.
- 27GA shaft.
- Conical tip.
- Lemos type connector.

E7933

27GA Bipolar Eraser, 2pin tapered

12



- Designed for retinal endodiathermy.
- 27GA shaft.
- Conical tip.
- Lemos type connector.

MEMBRANE PICKS

SUK02

25GA Membrane Pick, 130°

8



- 25GA Shaft with non-glare finish.
- 130° angled tip.

BACKFLUSH/EXTRUSION HANDPIECES

SUJ11 23GA Backflush/Extrusion Handpiece with blunt tip

6



- For active & passive aspiration.
- 23GA handpiece with blunt tip.
- Green colour coding ring.

SUJ12 23GA Backflush/Extrusion Handpiece with soft tip brush

6



- For active & passive aspiration.
- 23GA handpiece with soft tip brush.
- Green colour coding ring.

SUJ13 23GA Backflush/Extrusion Handpiece with soft tip

6



- For active & passive aspiration.
- 23GA handpiece with soft tip.
- Green colour coding ring.

SUJ14 25GA Backflush/Extrusion Handpiece with blunt tip

6



- For active & passive aspiration.
- 25GA handpiece with blunt tip.
- Blue colour coding ring.

SUJ17 27GA Backflush/Extrusion Handpiece with blunt tip

6

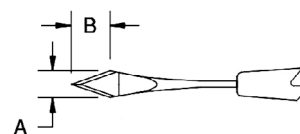


- For active & passive aspiration.
- 27GA handpiece with blunt tip.
- Magenta colour coding ring.

KNIVES



CLEAR CORNEAL KNIVES



LP7594 Clear corneal knife 1.3 mm angled

■ A = 1.3 mm, B = 1.4 mm.

6

LP7595 Clear corneal knife 1.6 mm angled

■ A = 1.6 mm, B = 1.7 mm.

6

LP7527 Clear corneal knife angled 2.75 mm

■ A = 2.75 mm, B = 3 mm.

6

LP7528 Clear corneal knife angled 2.85 mm

■ A = 2.85 mm, B = 3.2 mm.

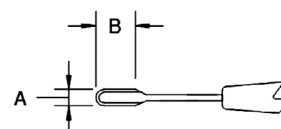
6

LP7587A Clear corneal knife 2.9 mm angled

■ A = 2.9 mm, B = 3.1 mm.

6

CRESCENT KNIVES

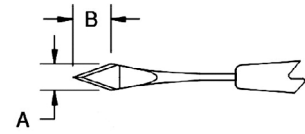


LP7510 Crescent blade bevel up angled

■ A = 2.0 mm, B = 4.0 mm.

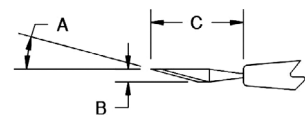
6

SLIT KNIVES



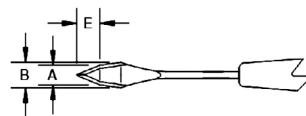
LP7548ADB	Slit knife 2.2 mm angled double bevel	■ A = 2.2 mm, B = 2.3 mm.	6
LP7549ADB	Slit knife 2.4 mm angled double bevel	■ A = 2.4 mm, B = 2.5 mm.	6
LP7550A	Slit knife 2.5 mm angled bevel up	■ A = 2.5 mm, B = 3.3 mm.	6
LP7551A	Slit knife 2.65 mm angled bevel up	■ A = 2.65 mm, B = 3.7 mm.	6
LP7551ADB	Slit knife 2.65 mm angled double bevel	■ A = 2.65 mm, B = 2.8 mm.	6
LP7559A	Slit knife 2.75 mm angled bevel up	■ A = 2.75 mm, B = 3.4 mm.	6
LP7552ADB	Slit knife 2.8 mm angled double bevel	■ A = 2.8 mm, B = 3.2 mm.	6
LP7553A	Slit knife 2.85 mm angled bevel up	■ A = 2.85 mm, B = 3.5 mm.	6
LP7556A	Slit knife 3.0 mm angled bevel up	■ A = 3.0 mm, B = 3.6 mm.	6
LP7557A	Slit knife 3.2 mm angled bevel up	■ A = 3.2 mm, B = 3.2 mm.	6

STAB KNIVES



LP7515	Stab knife 15 degree	■ A = 15°, B = 1.6 mm, C = 11.0 mm.	6
LP7522	Stab knife 22.5 degree	■ A = 22.5°, B = 1.6 mm, C = 11.0 mm.	6
LP7530	Stab knife 30 degree	■ A = 30°, B = 1.6 mm, C = 11.0 mm.	6
LP7545	Stab knife 45 degree	■ A = 45°, B = 1.8 mm, C = 11.0 mm.	6

TRAPEZOIDAL KNIVES



LP7599	Trapezoidal knife 1.5 - 1.7 mm angled	■ A = 1.5 mm, B = 1.7 mm, E = 2.20 mm.	6
LP7596	Trapezoidal knife 1.5 - 2.0 mm angled	■ A = 1.5 mm, B = 2.0 mm, E = 2.0 mm.	6
LP7600	Trapezoidal knife 1.6 - 1.8 mm angled	■ A = 1.6 mm, B = 1.8 mm, E = 2.0 mm.	6
LP7603	Trapezoidal knife 1.8 - 2.2 mm angled	■ A = 1.8 mm, B = 2.2 mm, E = 2.0 mm.	6
LP7601	Trapezoidal knife 2.0 - 2.2 mm angled	■ A = 2.0 mm, B = 2.2 mm, E = 2.29 mm.	6
LP7582	Trapezoidal knife 2.85 - 3.2 mm angled	■ A = 2.85 mm, B = 3.2 mm, E = 2.0 mm.	6

MVR KNIVES



LP7519	19 gauge MVR blade	■ A = 1.37 mm.	6
LP7520	20 gauge MVR blade	■ A = 1.2 mm.	6

SIDEPORT KNIVES



LP7593	Arrow knife 0.8 mm angled	■ A = 0.8 mm.	6
LP7592	Arrow knife 1.1 mm angled	■ A = 1.1 mm.	6

CANNULAS



CANNULAS

ED7131

Retrobulbar Needle, 23GA

10



- Atkinson style bevel.
- 23GA.
- Overall length excluding hub: 38.0 mm.

ED7132

Peribulbar Needle, 23GA

10



- Atkinson style bevel.
- 23GA.
- Overall length excluding hub: 32.0 mm.

ED7133

Retrobulbar Needle, 25GA

10



- Atkinson style bevel.
- 25GA.
- Overall length excluding hub: 38.0 mm.

ED7134

Peribulbar Needle, 25GA

10



- Atkinson style bevel.
- 25GA.
- Overall length excluding hub: 32.0 mm.

CANNULAS

ED7101

Anterior Chamber Needle, 20GA, 8.0 mm

10



- 20GA.
- 8.0 mm Angled.
- Overall length excluding hub: 25.0 mm.

ED7103

Anterior Chamber Needle, 25GA, 8.0 mm

10



- 23GA.
- 8.0 mm Angled.
- Overall length excluding hub: 22.0 mm.

ED7104

Anterior Chamber Needle, 27GA, 8.0 mm

10



- 27GA.
- 8.0 mm Angled.
- Overall length excluding hub: 21.0 mm.

ED7105

Anterior Chamber Needle, 30GA, 5.0 mm

10



- 30GA.
- 5.0 mm Angled.
- Overall length excluding hub: 21.0 mm.

CANNULAS

ED7112

Cystotome Irrigating, 23GA, formed

10



- Formed irrigating cystotome, 23GA.
- Overall length excluding hub: 16.0 mm.

ED7113

Cystotome Irrigating, 25GA, formed

10



- Formed irrigating cystotome, 25GA, with 12.0 mm curved tip.
- Overall length excluding hub: 16.0 mm.

ED7114

Cystotome Irrigating, 25GA, short radius, formed

10



- Short 8.0 mm.
- Curved tip.
- Overall length excluding hub: 16.0 mm.

ED7115

Cystotome Irrigating, 27GA, short radius, formed

10



- Short 8.0 mm.
- Curved tip.
- Overall length excluding hub: 16.0 mm.

ED7117

Cystotome Irrigating, 27GA, capsulorhexis, formed angled tip

10



- Short 8.0 mm.
- Curved tip.
- Overall length excluding hub: 16.0 mm.

CANNULAS

ED7154S

Hydrodissection Cannula, 25GA, straight J shaped

10

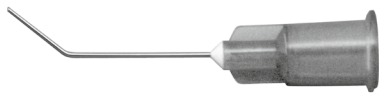
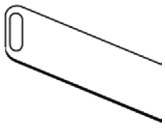


- Hydrodissection/Aspiration Cannula. 25GA.
- Straight with J-Tip.
- J-shaped tip allows aspiration and irrigation at the 12 o'clock position.
- Tip: 1.5 × 1.75 mm. Overall length excluding hub: 22.0 mm.

ED7155

Hydrodissection Cannula, 25GA, angled flat tip

10

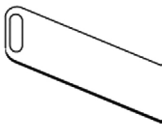


- Nucleus Hydrodissection Cannula. 25GA.
- Angled with flattened tip.
- 7.0 mm angled shaft with flattened tip for insertion under the capsular flap.
- Overall length excluding hub: 21.0 mm.

ED7157

Hydrodissection Cannula, 19GA, Bishop Harmon irrigating

10



- Nucleus Hydrodissection Cannula. 19GA.
- 8mm Bishop Harmon Irrigating tip.
- Overall length excluding hub: 25mm.

ED7153

Silicone Capsule Polisher, 27GA

10



- Silicone cap to provide squeegee effect.
- Overall length excluding hub: 22.0 mm.

ED7182

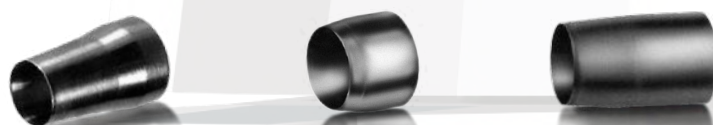
Viscoelastic Cannula, 27GA

10



- 27GA.
- Angled.
- 7.0 mm angled tip cannula with unique hub that facilitates flow of viscoelastic material.
- Overall length excluding hub: 24.5 mm.

TREPHINES



TREPHINES



E3050 6.0

Tanne Universal Trephine



- 6.0 mm Ø.
- Sterile, For handle E3050 H.

E3050 8.5

Tanne Universal Trephine



- 8.5 mm Ø.
- Sterile, For handle E3050 H.

E3050 6.25

Tanne Universal Trephine



- 6.25 mm Ø.
- Sterile, For handle E3050 H.

E3050 8.75

Tanne Universal Trephine



- 8.75 mm Ø.
- Sterile, For handle E3050 H.

E3050 6.5

Tanne Universal Trephine



- 6.5 mm Ø.
- Sterile, For handle E3050 H.

E3050 9.0

Tanne Universal Trephine



- 9.0 mm Ø.
- Sterile, For handle E3050 H.

E3050 6.75

Tanne Universal Trephine



- 6.75 mm Ø.
- Sterile, For handle E3050 H.

E3050 9.25

Tanne Universal Trephine



- 9.25 mm Ø.
- Sterile, For handle E3050 H.

E3050 7.0

Tanne Universal Trephine



- 7.0 mm Ø.
- Sterile, For handle E3050 H.

E3050 7.25

Tanne Universal Trephine



- 7.25 mm Ø.
- Sterile, For handle E3050 H.

E3050 7.5

Tanne Universal Trephine



- 7.5 mm Ø.
- Sterile, For handle E3050 H.

E3050 7.75

Tanne Universal Trephine



- 7.75 mm Ø.
- Sterile, For handle E3050 H.

E3050 8.0

Tanne Universal Trephine



- 8.0 mm Ø.
- Sterile, For handle E3050 H.

E3050 8.25

Tanne Universal Trephine



- 8.25 mm Ø.
- Sterile, For handle E3050 H.

TREPHINES

**E3096 6.0****Trephine Blade**

1

- Sterile, For holder E3095 or punch E3097.
- 6.0 mm Ø. ■ 9.0 mm.

E3096 6.5**Trephine Blade**

1

- Sterile, For holder E3095 or punch E3097.
- 6.5 mm Ø. ■ 9.0 mm.

E3096 6.75**Trephine Blade**

1

- Sterile, For holder E3095 or punch E3097.
- 6.75 mm Ø. ■ 9.0 mm.

E3096 7.0**Trephine Blade**

1

- Sterile, For holder E3095 or punch E3097.
- 7.0 mm Ø. ■ 9.0 mm.

E3096 7.5**Trephine Blade**

1

- Sterile, For holder E3095 or punch E3097.
- 7.5 mm Ø. ■ 9.0 mm.

E3096 8.0**Trephine Blade**

1

- Sterile, For holder E3095 or punch E3097.
- 8.0 mm Ø. ■ 9.0 mm.

E3096 8.25**Trephine Blade**

1

- Sterile, For holder E3095 or punch E3097.
- 8.25 mm Ø. ■ 9.0 mm.

**E3096L 7.0****Trephine Blade, long model**

1

- Long. Sterile, For holder E3095 or punch E3097.
- 7.0 mm Ø. ■ 15.0 mm.

E3096L 7.25**Trephine Blade, long model**

1

- Long. Sterile, For holder E3095 or punch E3097.
- 7.25 mm Ø. ■ 15.0 mm.

E3096L 7.50**Trephine Blade, long model**

1

- Long. Sterile, For holder E3095 or punch E3097.
- 7.5 mm Ø. ■ 15.0 mm.

E3096L 7.75**Trephine Blade, long model**

1

- Long. Sterile, For holder E3095 or punch E3097.
- 7.75 mm Ø. ■ 15.0 mm.

E3096L 8.0**Trephine Blade, long model**

1

- Long. Sterile, For holder E3095 or punch E3097.
- 8.0 mm Ø. ■ 15.0 mm.

E3096L 8.25**Trephine Blade, long model**

1

- Long. Sterile, For holder E3095 or punch E3097.
- 8.25 mm Ø. ■ 15.0 mm.

TREPHINES

**E3096 8.5****Trephine Blade**

1

- Sterile, For holder E3095 or punch E3097.
- 8.5 mm Ø. ■ 9.0 mm.

E3096L 8.50**Trephine Blade, long model**

1

- Long. Sterile, For holder E3095 or punch E3097.
- 8.5 mm Ø. ■ 15.0 mm.

E3096 8.75**Trephine Blade**

1

- Sterile, For holder E3095 or punch E3097.
- 8.75 mm Ø. ■ 9.0 mm.

E3096L 8.75**Trephine Blade, long model**

1

- Long. Sterile, For holder E3095 or punch E3097.
- 8.75 mm Ø. ■ 15.0 mm.

E3096 9.0**Trephine Blade**

1

- Sterile, For holder E3095 or punch E3097.
- 9.0 mm Ø. ■ 9.0 mm.

E3096L 9.0**Trephine Blade, long model**

1

- Long. Sterile, For holder E3095 or punch E3097.
- 9.0 mm Ø. ■ 15.0 mm.

E3096 9.25**Trephine Blade**

1

- Sterile, For holder E3095 or punch E3097.
- 9.25 mm Ø. ■ 9.0 mm.

E3096 9.5**Trephine Blade**

1

- Sterile, For holder E3095 or punch E3097.
- 9.5 mm Ø. ■ 9.0 mm.



MISCELLANEOUS

References: 1. Amvisc® and Amvisc® Plus Directions for Use. 2. OcuCoat® Directions for Use. 3. U. Devgan. Dual-viscoelastic system ideal for cataract surgery. *Ocular Surgery News U.S. Ed.*, Jan 25, 2009. 4. G. Rainer, et. al. Intraocular pressure rise after small incision cataract surgery: a randomised intraindividual comparison of two dispersive viscoelastic agents. *Br J Ophthalmol* 2001;85:139-142. 5. Nankivil D, Gonzalez A, Arrieta E, et al. A new, specular reflection-based, precorneal tear film stability measurement technique on a rabbit model: viscoelastic increases tear film stability. *Invest Ophthalmol Vis Sci*. 2014;55:4158-4163. DOI:10.1167/iov.14-14157. 6. Prinz A, et. al. Efficacy of ophthalmic viscosurgical devices in maintaining corneal epithelial hydration and clarity: In vitro assessment. *J Cataract Refract Surg* 2012; 38:2154-2159. 7. Chen Y-A, Hirnschall N and Findl O. Comparison of corneal wetting properties of viscous eye lubricant and balanced salt solution to maintain optical clarity during cataract surgery. Submitted to *J Cataract Refract Surg*. In press.

PROTECTORS

E5699

Crouch Corneal Protector, adult

10



- Developed for oculoplastic procedures for corneal and scleral protection.
- Dimensions enable protector to rest on the sclera and not on the cornea.
- Easily removed with the SUE05-12 Pierse Tying Forceps.
- Dimensions: 23.5 mm × 25.8 mm.

E5699 P

Crouch Corneal Protector, pediatric

10



- Developed by Dr. Earl Crouch for pediatric oculoplastic procedures for corneal and scleral protection.
- Dimensions enable protector to rest on the sclera and not the cornea.
- Easily removed with the SUE05-12 Pierse Tying Forceps.
- Dimensions: 17.0 mm diameter.

VISCOELASTIC, OTHER ACCESSORIES

60081L

Amvisc Plus, 1mL

1



- 1.6% sodium hyaluronate (HA) concentration
- 0.8-mL preloaded sterile glass syringe
- Cohesive plus dispersive characteristics in one syringe¹
- Cohesive properties ensure continuous space maintenance while providing corneal endothelial cell protection¹
- Optical clarity¹
- Not made with natural rubber latex¹

CC050S

Ocucoat, 1 mL

1

CC065S

Ocucoat, 2mL

1



- Excellent coating properties help protect endothelial cells^{2,3}
- Low molecular weight allows for rapid removal with minimal risk of elevated intraocular pressure⁴
- Clarity enables unobstructed view of the surgical field throughout capsulorhexis and phacoemulsification.

800000059

Cornea Protect

1



- Optimises the process of ophthalmic procedures
 - 1 drop lasts for up to 20 minutes (the average duration of a cataract procedure)^{5,6}
 - Protects the cornea 10 times longer compared to Balanced Salt solution.^{5,7}
 - Surgery without interruption, reduces the manipulations performed by the OT assistant.⁷
- Enhanced View:
 - Fast optical clarity⁶ and great optical clarity.⁷
- Less corneal damage after the surgery
 - Avoidance of frequent disruption of the surgical field results in a simpler and possibly safer surgical procedure.⁷
 - Increased breakup time after the surgery compared to Balanced Salt Solution.⁷
 - Enhanced comfort for the patient during the surgery.⁷

INDEX

CATARACT SURGERY

SPECULA

		8
SUH01	Barraquer Eye Speculum	8
SUH04	Adjustable Eye Speculum	8

FORCEPS

		8
SUE02-12	Bonn Forceps	8
SUE03-12	Tying Forceps, straight	8
SUE04-12	McPherson Tying Forceps	8
SUE05-12	Pierse Tying Forceps	9
SUE01-12	Capsulorhexis Forceps	9
SUE06-12	MICS Capsulorhexis Forceps	9
SUE07-12	Capsulorhexis Forceps, with markings	9
SUE08-12	MICS Capsulorhexis Forceps with curved jaws	9
SUI20-12	MICS 1.0 mm Capsulorhexis Forceps	9

MANIPULATORS

		10
SUF01	Koch Stop & Chop Manipulator	10
SUF02	Sinsky Hook	10
SUF03	Phaco Spatula	10
SUF04	Drysdale type Nucleus Manipulator	10

CAPSULEGUARD® STELLARIS® SYSTEM

COAXIAL I/A HANDPIECES

		11
85910ST	CapsuleGuard IA® Handpiece, 45°	11
85912ST	CapsuleGuard IA® Handpiece, straight	11
85913ST	CapsuleGuard IA® Handpiece, curved	11
85914ST	MICS CapsuleGuard IA® Handpiece, straight	11
85915ST	MICS CapsuleGuard IA® Handpiece, 45°	11

STELLARIS® SYSTEM COAXIAL I/A HANDPIECES

		12
85783ST	17GA I/A Handpiece, curved	12
85784ST	17GA I/A Handpiece, tip 45°	12
85786ST	16GA I/A Handpiece, tip 90°	12
85794ST	I/A Handpiece, curved, with sleeve, for 1.8 C-MICS	12
85795ST	I/A Handpiece, with sleeve, tip 90°, for 1.8 C-MICS	12

STELLARIS® SYSTEM BIAxIAL IRRIGATION

		13
85902ST19	19GA Irrigation Handpiece	13
85787ST	21GA Irrigation Handpiece	13
85807ST	23GA Irrigation Handpiece	13

BIAxIAL ASPIRATION HANDPIECES

		14
85901S19	19GA Aspiration Handpiece	14
85792S	23GA Aspiration Handpiece	14
85780S	21GA Aspiration Handpiece	14

COAXIAL I/A HANDPIECES

		15
85910S	CapsuleGuard IA® Handpiece, 45°	15
85912S	CapsuleGuard IA® Handpiece, straight	15
85913S	CapsuleGuard IA® Handpiece, curved	15
85914S	MICS CapsuleGuard IA® Handpiece, straight	15
85915S	MICS CapsuleGuard IA® Handpiece, 45°	15
85782S	17GA I/A Handpiece, straight	16
85783S	17GA I/A Handpiece, curved	16
85784S	17GA I/A Handpiece, straight, tip 45°	16
85785S	20GA I/A Handpiece, straight with sleeve	16
85786S	16GA I/A Handpiece, straight, tip 90°	16

BIAxIAL IRRIGATION HANDPIECES

		17
85781S	21GA Irrigation Handpiece, roughened	17
85787S	21GA Irrigation Handpiece	17
85807S	23GA Irrigation Handpiece	17
85791S	23GA Irrigation Handpiece, central port, beveled tip	17

VITREORETINAL SURGERY

FORCEPS 19

65023S-12	23GA Endgripping Forceps	19
65025S-12	25GA Endgripping Forceps	19
SUI13-12	27GA Endgripping Forceps	19
SUI07-12	23GA Endgripping ILM Forceps	19
SUI08-12	25GA Endgripping ILM Forceps	19
SUI03-12	23GA Asymmetric Peeling Forceps	20
SUI05-12	25GA Asymmetric Peeling Forceps	20
SUI10-12	20GA Serrated Forceps	20
SUI11-12	23GA Serrated Forceps	20
SUI12-12	25GA Serrated Forceps	20
SUI14-12	27GA Serrated Forceps	20

BIPOLAR ERASERS 21

E7928	Bipolar Scleral Eraser	21
E7929	20GA Bipolar Eraser, lemo tapered	21
E7930	23GA Bipolar Eraser, lemo tapered	21
E7931	23GA Bipolar Eraser, 2pin tapered	21
E7926	25GA Bipolar Eraser, lemo tapered	21
E7927	25GA Bipolar Eraser, lemo blunt	21
E7924	25GA Bipolar Eraser, 2pin tapered	21
E7925	25GA Bipolar Eraser, 2pin blunt	22
E7932	27GA Bipolar Eraser, lemo tapered	22
E7933	27GA Bipolar Eraser, 2pin tapered	22

MEMBRANE PICKS 22

SUK02	25GA Membrane Pick, 130°	22
--------------	--------------------------	----

BACKFLUSH/EXTRUSION HANDPIECES 23

SUJ11	23GA Backflush/Extrusion Handpiece with blunt tip	23
SUJ12	23GA Backflush/Extrusion Handpiece with soft tip brush	23
SUJ13	23GA Backflush/Extrusion Handpiece with soft tip	23
SUJ14	25GA Backflush/Extrusion Handpiece with blunt tip	23
SUJ17	27GA Backflush/Extrusion Handpiece with blunt tip	23

KNIVES

CLEAR CORNEAL KNIVES 25

LP7594	Clear corneal knife 1.3 mm angled	25
LP7595	Clear corneal knife 1.6 mm angled	25
LP7527	Clear corneal knife angled 2.75 mm	25
LP7528	Clear corneal knife angled 2.85 mm	25
LP7587A	Clear corneal knife 2.9 mm angled	25

CRESCENT KNIVES 25

LP7510	Crescent blade bevel up angled	25
---------------	--------------------------------	----

SLIT KNIVES 26

LP7548ADB	Slit knife 2.2 mm angled double bevel	26
LP7549ADB	Slit knife 2.4 mm angled double bevel	26
LP7550A	Slit knife 2.5 mm angled bevel up	26
LP7551A	Slit knife 2.65 mm angled bevel up	26
LP7551ADB	Slit knife 2.65 mm angled double bevel	26
LP7559A	Slit knife 2.75 mm angled bevel up	26
LP7552ADB	Slit knife 2.8 mm angled double bevel	26
LP7553A	Slit knife 2.85 mm angled bevel up	26
LP7556A	Slit knife 3.0 mm angled bevel up	26
LP7557A	Slit knife 3.2 mm angled bevel up	26

STAB KNIVES 26

LP7515	Stab knife 15 degree	26
LP7522	Stab knife 22.5 degree	26
LP7530	Stab knife 30 degree	26
LP7545	Stab knife 45 degree	26

TRAPEZOIDAL KNIVES 27

LP7599	Trapezoidal knife 1.5 - 1.7 mm angled	27
LP7596	Trapezoidal knife 1.5 - 2.0 mm angled	27
LP7600	Trapezoidal knife 1.6 - 1.8 mm angled	27
LP7603	Trapezoidal knife 1.8 - 2.2 mm angled	27
LP7601	Trapezoidal knife 2.0 - 2.2 mm angled	27
LP7582	Trapezoidal knife 2.85 - 3.2 mm angled	27

MVR KNIVES 27

LP7519	19 gauge MVR blade	27
LP7520	20 gauge MVR blade	27

SIDEPORT KNIVES 27

LP7593	Arrow knife 0.8 mm angled	27
LP7592	Arrow knife 1.1 mm angled	27

CANNULAS

CANNULAS

29

ED7131	Retrobulbar Needle, 23GA	29
ED7132	Peribulbar Needle, 23GA	29
ED7133	Retrobulbar Needle, 25GA	29
ED7134	Peribulbar Needle, 25GA	29
ED7101	Anterior Chamber Needle, 20GA, 8.0 mm	30
ED7103	Anterior Chamber Needle, 25GA, 8.0 mm	30
ED7104	Anterior Chamber Needle, 27GA, 8.0 mm	30
ED7105	Anterior Chamber Needle, 30GA, 5.0 mm	30
ED7112	Cystotome Irrigating, 23GA, formed	31
ED7113	Cystotome Irrigating, 25GA, formed	31
ED7114	Cystotome Irrigating, 25GA, short radius, formed	31
ED7115	Cystotome Irrigating, 27GA, short radius, formed	31
ED7117	Cystotome Irrigating, 27GA, capsulorhexis, formed angled tipd	31
ED7154S	Hydrodissection Cannula, 25GA, straight J shaped	32
ED7155	Hydrodissection Cannula, 25GA, angled flat tip	32
ED7157	Hydrodissection Cannula, 19GA, Bishop Harmon irrigating	32
ED7153	Silicone Capsule Polisher, 27GA	32
ED7182	Viscoelastic Cannula, 27GA	32

TREPHINES

TREPHINES

34

E3050 6.0	Tanne Universal Trephine	34
E3050 6.25	Tanne Universal Trephine	34
E3050 6.5	Tanne Universal Trephine	34
E3050 6.75	Tanne Universal Trephine	34
E3050 7.0	Tanne Universal Trephine	34
E3050 7.25	Tanne Universal Trephine	34
E3050 7.5	Tanne Universal Trephine	34
E3050 7.75	Tanne Universal Trephine	34
E3050 8.0	Tanne Universal Trephine	34
E3050 8.25	Tanne Universal Trephine	34
E3050 8.5	Tanne Universal Trephine	34
E3050 8.75	Tanne Universal Trephine	34
E3050 9.0	Tanne Universal Trephine	34
E3050 9.25	Tanne Universal Trephine	34
E3096 6.0	Trephine Blade	35
E3096 6.2	Trephine Blade	35
E3096 6.5	Trephine Blade	35
E3096 6.75	Trephine Blade	35
E3096 7.0	Trephine Blade	35
E3096 7.2	Trephine Blade	35
E3096 7.5	Trephine Blade	35
E3096 7.7	Trephine Blade	35
E3096 8.0	Trephine Blade	35
E3096 8.25	Trephine Blade	35
E3096L 7.0	Trephine Blade, long model	35
E3096L 7.5	Trephine Blade, long model	35
E3096L 8.0	Trephine Blade, long model	35
E3096L 8.2	Trephine Blade, long model	35
E3096 8.5	Trephine Blade	36
E3096 8.7	Trephine Blade	36
E3096 9.0	Trephine Blade	36
E3096 9.2	Trephine Blade	36
E3096 9.5	Trephine Blade	36
E3096L 8.5	Trephine Blade, long model	36
E3096L 8.7	Trephine Blade, long model	36
E3096L 9.0	Trephine Blade, long model	36

MISCELLANEOUS

PROTECTORS, VISCOELASTIC, OTHER ACCESSORIES

38

E5699	Crouch Corneal Protector, adult	38
E5699 P	Crouch Corneal Protector, pediatric	38
60081L	Amvisc Plus, 1mL	38
CC050S	Ocucoat, 1 mL	38
CC065S	Ocucoat, 2 mL	38
8000000059	Cornea Protect	38

For more information please contact your Bausch + Lomb Territory Manager
or Customer Service - 1800 251150

www.storzeye.com*
www.storzeye.eu*

The Bausch + Lomb Surgical Portfolio



Stellaris Elite™ Vision
Enhancement System



Aberration-Free
Advanced Optics IOLs



Trifocal Diffractive IOLs



Minims® Sterile Eye Drops

* Please contact Customer Service for product availability

© 2020 Bausch & Lomb Incorporated. ®/TM denote trademarks of Bausch & Lomb Incorporated and its affiliates.

Other product names/ brand names are trademarks of their respective owners.

Bausch & Lomb (Australia) Pty Ltd. ABN 88 000 222 408. Level 2, 12 Help Street, Chatswood NSW 2067 Australia. (Ph 1800 251150)

New Zealand Distributor: Toomac Ophthalmic. 32D Poland Road, Glenfield 0627 Auckland New Zealand (Ph 0508 443 5347)

www.bausch.com.au



@BauschSurgical



Bausch + Lomb Surgical

STO0015.AU.20

BAUSCH + LOMB
See better. Live better.