

THE MARVIN **CONTEMPORARY** STUDIO



PRODUCT PORTFOLIO

MARVIN 
Windows and Doors
Built around you.®

THE MARVIN CONTEMPORARY STUDIO:

MODERN STYLE, OPEN SPACES.



The Marvin® Contemporary Studio is the workshop of contemporary window architecture. Here, architects are invited to combine the elemental, the clean and uncluttered with oversized windows and doors to create tranquility and harmony within the surrounding landscape and stunning line of sight views that contemporary design demands.



THE MARVIN CONTEMPORARY STUDIO:

WHY CHOOSE MARVIN?



As a company built on a rock-solid foundation of values, we still make windows and doors the way we've always made them. One at a time. No shortcuts. Made to order. To each customer's exacting specifications. With techniques that have been refined and passed on through four generations, we take pride in building windows and doors the right way.

And as a leader in innovation, Marvin® is dedicated to creating products that make the places where we live and work more functional, beautiful and meaningful. Our combination of superior craftsmanship and virtually unlimited design capabilities make Marvin the best total value on the market today.





WINDOW COLLECTION



CONTEMPORARY CASEMENT

Expansive glass and flush frames combine for massive views. Used individually or grouped.

AVAILABLE IN SIZES UP TO:

44" wide and 102" high (operators)

ULTIMATE GLIDER

The clean and modern styling is complemented by innovative performance, beautiful design options and low profile hardware.

AVAILABLE IN SIZES UP TO:

120" wide and 74" high



CONTEMPORARY AWNING

Features a flush exterior frame and sash as well as a narrow frame resulting in maximum glass area and a clean aesthetic.

AVAILABLE IN SIZES UP TO:

96" wide and 96" high (operators)

ULTIMATE OXXO GLIDER

Bi-parting panels offer a stunning, unobstructed view. Fixed glazed sash on both sides frame the two operable center panels.

AVAILABLE IN SIZES UP TO:

Approximately 14' wide and 6' high



DIRECT GLAZE / SPECIALTY SHAPES

Big glass, narrow frames and nearly unlimited shapes and sizes combine to create open, light-filled spaces.

AVAILABLE IN SIZES UP TO:

Minimum and maximum sizes vary based on window design or shape

CORNER WINDOW

Clean, modern lines with thin frames maximize glass area to invite in more sunlight.

AVAILABLE IN SIZES UP TO:

72" wide and 102" high



Note: Maximum sizes may not be available in all configurations or listed Performance Grade Rating.



DOOR COLLECTION



CONTEMPORARY DOOR

The 4 ³/₄" narrow stiles and rails mean more glass, more light, and more of the outdoors.

AVAILABLE IN:

Two, three and four panel configurations in sizes up to 14' wide and 9' high

ULTIMATE BI-FOLD DOOR

A simple, elegant solution for indoor/outdoor living because it opens wide to invite in the view. Also ideal for dramatic room expansions into adjoining interior areas.

AVAILABLE IN:

One to sixteen panel configurations in openings up to 55' wide and 10' high



SLIDING PATIO DOOR

A contemporary energy-efficient design with narrow stiles and rails that maximizes daylight.

AVAILABLE IN:

Two, three and four panel configurations in sizes up to 12' wide and 9' high

ULTIMATE MULTI-SLIDE DOOR

With an unmatched 0.28 U-Factor and narrow stiles and rail, the Ultimate Multi-Slide Door invites fresh air and an abundance of natural light into your home.

AVAILABLE IN:

Openings up to 56' wide and 12' high



ULTIMATE SWINGING FRENCH DOOR

Sleek style with contemporary lower bottom rail.

AVAILABLE IN:

Two, three and four panel configurations in sizes up to 14' wide and 9' high

ULTIMATE LIFT AND SLIDE DOOR

Its narrow frame design and 4" stile option give this door a clean, contemporary look.

AVAILABLE IN:

Pocket and Stacked configurations up to four panels unidirectional and eight panels bi-parting openings up to 48' wide and 12' high



Note: Maximum sizes may not be available in all configurations or listed Performance Grade Rating.



CONTEMPORARY CASEMENT

With a flush exterior frame and sash as well as a narrow frame, the Marvin® Contemporary Casement is perfect for projects looking to achieve a contemporary design. Available in industry leading heights up to 102" and a square interior profile for massive views with streamlined sightlines. The Contemporary Casement looks impressive on its own or grouped with other windows.



INTERIOR



EXTERIOR



FEATURES

- Available in crank out or push out
- Flush exterior frame and sash
- Narrow frame and jambs
- Endless design options
- Operable or non-operating units are available in special shapes
- Retractable Screen Option
- Durable hardware system provides the widest open views, even at extra large sizes
- Revolutionary wash mode allows access to both sides of glass from indoors
- Available in sizes up to 44" wide and 102" high (operators)

SPECIFICATIONS

- One-lite Low E2 with argon insulating glass
- Modern, concealed folding handle and sash lock
- Bare wood interior
- Extruded aluminum clad exterior (clad units)
- 2 ³/₁₆" jambs
- Up to AW-PG50 performance rating

HOW IT WORKS

Revolutionary hardware allows the Contemporary Casement Window to rotate inward, making both sides of the glass washable from the interior of the home – so your views are always clean.





CONTEMPORARY AWNING

The Marvin® Contemporary Awning features a flush exterior frame and sash as well as a narrow frame resulting in maximum glass area and a clean aesthetic. It is available in sizes that set the industry standard for large windows, so you can achieve larger than ever openings for better airflow and expansive views. The Contemporary Awning can be used on its own or as a complement to Contemporary Casement or Direct Glaze windows to add ventilation.



INTERIOR



EXTERIOR



FEATURES

- Available in crank out or push out
- Flush exterior frame and sash
- Narrow frame and jambs
- Endless design options
- Retractable screen option
- Durable hardware system provides wide open views, even at extra large sizes
- Available in sizes up to 96" wide and 96" high (operators)

SPECIFICATIONS

- One-lite Low E2 with argon insulating glass
- Folding handle and sash lock
- Extruded aluminum clad exterior (clad units)
- Bare wood interior
- 2 ³/₁₆" jambs
- Installation hardware
- Many mull configurations are AAMA 450 certified
- Up to AW-PG50 performance rating

RETRACTABLE SCREEN

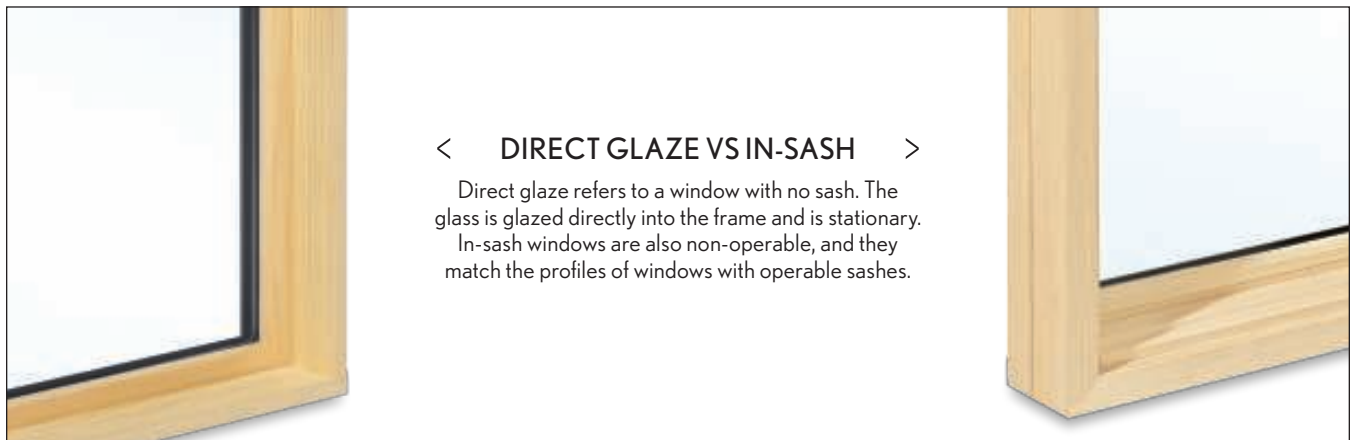
The innovative Retractable Screen makes the most of the Awning Window providing a screen that lets the breeze in and easily retracts out of sight to offer enjoyable scenery. A tight seal, strong adjustable pull bar and hidden closing engagement system provide extraordinary performance and superior looks. Marvin's unique concealed design makes the screen nearly undetectable when the screen is in the retracted position. No more replacing screens with the seasons.





DIRECT GLAZE

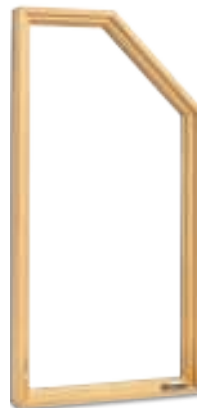
Homes designed to express a unique vision need windows to match. Direct Glaze windows blur the line between inside and outside. Big glass, narrow frames and nearly unlimited shapes and sizes combine to create open, light-filled spaces. Ideal for creating multiple units into stunning window wall configurations.





SPECIALTY SHAPES

Marvin® Specialty Shape windows go beyond the usual rectangle and add dimension and drama to a window design. Choose from various shapes to create your ideal window. Many specialty windows are available as in-sash to match your total window package, and many have the ability to operate.



INTERIOR



EXTERIOR



ULTIMATE GLIDER

The Marvin® Ultimate Glider window brings quality craftsmanship; contemporary styling; and a modern, streamlined look to any home. This industry leading design features sleek hardware and an ergonomic handle for easy operation. The two-point concealed lock automatically locks when the window is closed and the easy-wash feature complements this beautifully designed window. This glider window is a great space saving design for areas where a swinging window won't work.



INTERIOR

EXTERIOR



FEATURES

- Available as a dual or triple sash window with multiple operating configurations for versatility
- Featuring an ergonomic handle and sleek hardware for easy operation with just one hand
- Two-point, concealed lock automatically locks when window is closed
- Easy wash feature
- Available in sizes up to 120" wide and 74" high

SPECIFICATIONS

- One-lite Low E2 with argon insulating glass
- Folding handle and sash lock
- Bare wood interior
- 4 ⁹/₁₆" jambs
- Extruded aluminum clad exterior (clad units)
- Up to LC-PG50 performance rating

OPENING CONTROL DEVICE

We offer several windows within our collection that have our factory-applied Window Opening Control Device (WOCD). Properly used WOCDs may help prevent potential window falls in children under five years of age.





ULTIMATE OXXO GLIDER

The Marvin® Ultimate OXXO Glider is a stunning variation on the clean, contemporary look of a glider window. Two center panels slide to each side of the window, opening up an unobstructed opening. A fixed glazed sash on either side of the window frames the two center panels. The OXXO Glider is perfect for the indoor/outdoor lifestyle, this window makes a large and easy pass-through from kitchen to outdoor dining or living space.



INTERIOR



EXTERIOR



FEATURES

- Can span up to 14' wide. Height can be specified as large as 6'.
- Two center panels slide to each side of the window, opening up an unobstructed view
- Square sticking option available
- Fixed glazed sash on both sides frame the two operable center panels
- Unit dimensions are based on width-to-height ratios
- Two-point, concealed lock automatically engages when the window is closed

SPECIFICATIONS

- One-lite Low E2 with argon insulating glass
- Folding lock handle
- 4 9/16" jambs
- Patented sash removal system for easy inside/outside cleaning
- Up to LC-PG35 performance rating

HOW IT WORKS

The Marvin® exclusive, automatic locking system features an easy-to-use hide-away handle that blends seamlessly into the sash. With one hand, you can unlock and open the window. Close the window just as easily and automatically lock with a concealed two-point lock.





CORNER WINDOW

The Marvin® Corner Window makes the most of panoramic views in homes by becoming a design focal point. Corner windows can add design interest to both the interior and exterior of your home. Maximize views and capture light from multiple angles with this unique feature window.



INTERIOR



EXTERIOR



CORNER DETAIL



FEATURES

- Narrow mulling for a minimal profile and a dramatic corner view
- Corner windows offer great design flexibility
- Available in Direct Glaze or an In-Sash design option
- Available in symmetrical or asymmetrical configurations
- Factory mulling available for vertical and horizontal stacked designs

SPECIFICATIONS

- Large sizes available up to 72" wide and 102" high*
- Standard 1" insulated Low E2 with Argon glass

MAKE THE MOST OF
PANORAMIC VIEWS.



* Max size may not be available in all configurations



CONTEMPORARY DOOR

The Marvin® Contemporary Door is the modern design option for Marvin Inswing and Outswing Doors. The 4 ³/₄" narrow stiles and rails mean more glass, more light and more of the outdoors. The simple sightlines created by the square interior profile complete the contemporary aesthetic. Partner the sleek styling of the Contemporary Door with Marvin's pearlescent Bright Silver or Copper clad exterior for a crisp, new look.



INTERIOR

EXTERIOR



FEATURES

- Simple lines - 4³/₄" narrow stiles and rails offer clean, uncluttered appearance
- Square interior glazing beads and contemporary handles add to the clean look
- Maximum daylight - narrow bottom rail offers a larger glass size compared to the traditional French door
- Available in sizes up to 14' wide and 9' high

SPECIFICATIONS

- Super-tough Ultrex[®] sill, engineered for performance
- Two, three and four panel configurations
- Unique concealed multi-point lock for attractive finished look
- Adjustable hinges keep door operating smoothly for years
- Up to LC-PG40 performance rating

CONTEMPORARY SWINGING HANDLE

The Contemporary handle is the default option on the Marvin[®] Contemporary Door. Available in Matte Black, Dark Bronze, Satin Nickel^{PVD} and Oil Rubbed Bronze^{PVD}





SLIDING PATIO DOOR

The Marvin® Sliding Patio Door is a sophisticated, contemporary design created for smooth operation and dependable performance. From the super-tough Ultrex® sill to the energy-efficient design, these doors are a perfect addition to any space.



INTERIOR



EXTERIOR



FEATURES

- 3" stiles and rails provide a modern look that maximizes your view
- Ultrex® sill withstands traffic and seasonal changes, so the door slides smoothly and easily
- Two, three and four panel configurations are available
- Optional top-hung screens are adjustable
- Available in sizes up to 12' wide and 9' high

SPECIFICATIONS

- Tempered, Low E2 with argon insulating glass
- Two-point locking system
- Bare wood interior
- 4 9/16" jambs
- Extruded aluminum clad exterior (clad units)
- Oak sill liner on beige Ultrex sills
- IZ3 certified
- Up to LC-PG30 performance rating

CONTEMPORARY SLIDING HANDLE

This sleek, contemporary door handle stands out by blending in. Stylish and subtle, the low-profile, streamlined design is the perfect complement to today's simple modern aesthetic. Available in a range of contemporary colors including Matte Black and Satin Nickel, featured here.





ULTIMATE SWINGING FRENCH DOOR

The Marvin® Ultimate Swinging French Door is a modern classic. Unmatched in fit and finish, these doors combine modern classic design and expert Marvin craftsmanship with endless design combinations that will complement any space. Available with a contemporary rail option and square sticking. IZ3 or IZ4 certified depending on the specifications of your door.



INSWING



OUTSWING



FEATURES

- Available in Inswing and Outswing doors
- Super-tough Ultrex® sill, engineered for years of performance
- Available with traditional shadow lines of a raised panel or the crisp, clean look of a flat panel
- Optional Oak sill liner
- Unique concealed multi-point lock for attractive finished look
- Adjustable hinges keep door operating smoothly for years
- Available in sizes up to 14' wide and 9' high

SPECIFICATIONS

- One-lite Low E2 with argon insulating glass
- Multi-point locking system on the active panel
- Head and foot bolts on inactive panel
- Bare wood interior
- Extruded aluminum clad exterior (clad units)
- 4 9/16" jambs
- Up to LC-PG40 performance rating

REAL LUXURY IS A VIEW
THAT NEVER ENDS





ULTIMATE BI-FOLD DOOR

The Marvin® Ultimate Bi-Fold Door is a simple, elegant solution for indoor/outdoor living because it opens wide to invite in the view. Configured from one to sixteen panels, Bi-Fold Doors use a folding system that allows the door to move smoothly to one or two sides, stylishly and effortlessly connecting your space to the outdoors or to another room. Marvin Bi-Fold Doors are ideal for making a dramatic connection with verandas, gardens and more, or expanding a room into adjoining interior areas.



INTERIOR

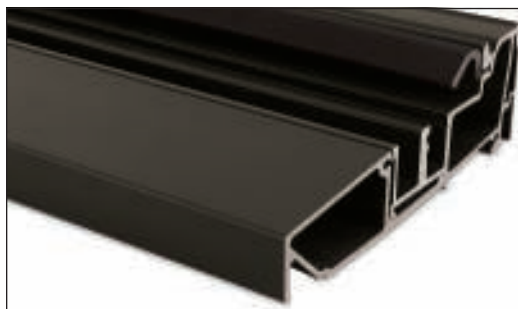


FEATURES

- Available in one to sixteen panel configurations in sizes up to 55' wide by 10' high
- Over 91 design configurations
- A single swinging active access panel door allows for convenient everyday use
- Integrated multi-point hardware system at folding panels for smooth and effortless operation
- Top hung panels glide along a sill track
- Interior glazing sticking and astragal profiles match
- Square or Ogee interior profile options
- Contemporary hardware aesthetic available in a variety of finish options
- Suited for residential and light commercial applications

SPECIFICATIONS

- Up to LC-PG50 performance rating
- Standard panel assembly features 2 1/4" by 4 3/4" stile and rail for large size
- Standard jamb depth is 5 9/16"
- Panels swing or fold to the exterior
- 5 high quality wood options
- 19 clad color options that meet AAMA 2605



SILL OPTIONS

Choose from performance, low profile and floor channel sill options. The performance sill is made of durable, thermal efficient fiber reinforced polyurethane and is capable of LC-PG50 performance rating. Interior liner choices may be personalized as painted aluminum to match the sill color, or with a wood interior veneer in Oak, Cherry or Mahogany.



ULTIMATE MULTI-SLIDE DOOR

The Marvin® Ultimate Multi-Slide Door is more than just a panoramic door. It's an entirely new lifestyle. Smoothly slide it open and invite into your home expansive views, fresh air and an abundance of warm, natural light. Available with a low profile flush sill or performance and high performance sill options. Doors with a high performance sill meet or exceed a LC-PG40 rating and extremely low standard U-Factor of 0.28, making the Ultimate Multi-Slide Doors performance as exceptional as the views they frame.



INTERIOR



FEATURES

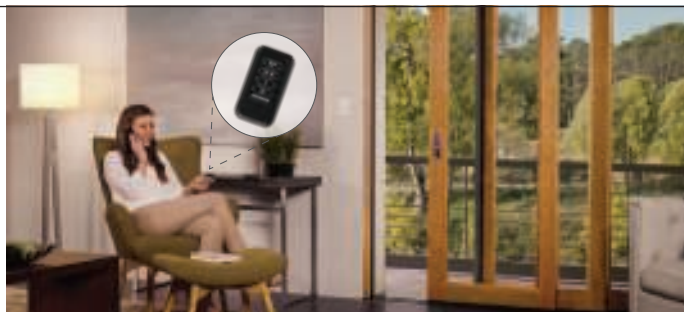
- Available in openings up to 56' wide and 12' high
- Up to 6 Uni-Directional and up to 10 Bi-Parting configurations
- Center Stacked configuration available with stationary center panel and operating panels on each side
- Pocket or Stacked Panels
- Low profile Flush, Performance, and High Performance sill options available
- Optional Scenic Door Ultimate Sliding Screen available
- Industry exclusive recessed exterior pull and interior pull and latch

SPECIFICATIONS

- One-lite Low E2 with argon insulating glass
- Bare wood interior
- Extruded aluminum clad exterior
- 2 1/4" thick panels
- 4 3/4" stile and rail width
- Multi-point lock
- Exclusive recessed pull and latch handles in Satin Nickel^{PVD} or Dark Bronze
- 3/4" flush low profile threshold sill in bronze or beige
- IZ3 certified
- Up to LC-PG40 performance rating

SLIDING DOOR AUTOMATIC CONTROL

Marvin® now offers an option for automated operation. The ultimate in convenience, a motorized system can be activated with easy-to-use touchpad controls or a hand-held remote.





ULTIMATE LIFT AND SLIDE DOOR

Marvin® Ultimate Lift and Slide Doors will add acres to your floor plan. Available in stunningly large sizes and numerous panel configurations, it allows for a seamless transition from the exterior to the interior of your home. Marvin's industry-exclusive hardware virtually disappears to give you an incredibly clean and unobstructed view with simple, effortless operation.



INTERIOR



FEATURES

- Available in openings up to 48' wide and 12' high
- Pocket or Stacked Panels
- 4" wide stile option for a contemporary look
- Flush, Recessed and Drainage sill options create seamless transitions
- Industry exclusive flush mount hardware is concealed for a clean look

SPECIFICATIONS

- One-lite Low E2 with argon insulating glass
- Bare wood interior
- Extruded aluminum clad exterior (clad units)
- Exclusive flush mount handle and exterior finger pull virtually disappear
- 2 3/4" thick panels
- Bronze^{PVD} hardware
- 3/16" exposed track above finished floor height
- Sill options available in anodized bronze aluminum (standard) or anodized mill finish
- Up to LC-PG30 performance rating

POCKET AND STACKED OPERATION

The Pocket panels slide into the wall, completely disappearing from view. The Stacked panels slide and stack neatly within the door frame. They glide on the inconspicuous 3/16" high exposed track. Stacked operation shown.

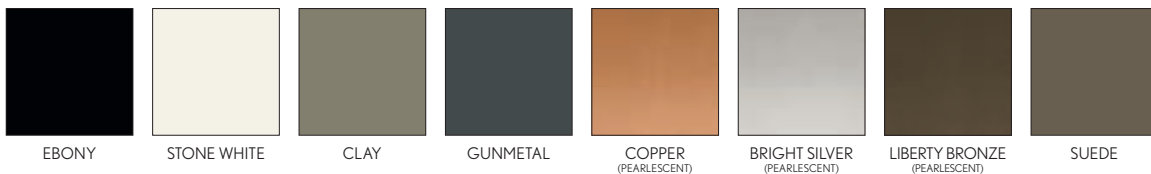




CLAD COLORS

Marvin's low-maintenance, clad-wood products feature an extruded aluminum commercial-grade exterior finish for superior resistance to fading and chalking. Marvin's palette of durable colors includes a spectrum of rich colors and three fresh, pearlescent finishes.

CONTEMPORARY COLOR OPTIONS



ADDITIONAL COLOR OPTIONS



Custom Colors: no matter what your inspiration for a custom window color, Marvin® will match it. You get any color your heart desires, with your own personal custom color name.

**ANY COLOR
YOU WANT**

Note: Some colors may not qualify for the 20-year warranty. For details contact your local dealer. For a copy of the warranty, see MarvinWindows.com.



WOOD SPECIES

Marvin® makes it easy to complement any project or design with an array of high-quality standard wood options. Wood interiors are available in six species. Wood is a product of nature and will vary in color, texture and grain.



PINE



WHITE OAK



CHERRY



DOUGLAS FIR



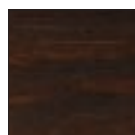
MAHOGANY



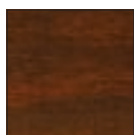
VERTICAL GRAIN
DOUGLAS FIR

INTERIOR FINISH OPTIONS

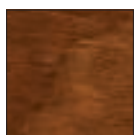
Marvin is proud to offer a variety of attractive stain and paint options. Every piece of wood is put through our unique multi-step, integrated conditioning and staining process to ensure a more ideal, lasting and beautiful finish.



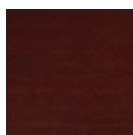
ESPRESSO



LEATHER



HAZELNUT



CABERNET



HONEY



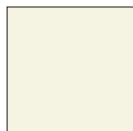
WHEAT



CLEAR COAT



PRIMED WHITE



WHITE



DESIGNER BLACK

Note: Finishes are shown on Pine. To see all of the beautiful finishes, visit MarvinWindows.com.



HARDWARE

Marvin® Windows and Doors' durable and modern hardware collection allows the lines and forms of each piece to stand out, turning each pull, crank, lock and hinge into an architectural sculpture. Deceptively sturdy, our hardware looks too beautiful to stand up to every day use.



CONTEMPORARY
SWINGING DOOR HANDLE
IN MATTE BLACK



CONTEMPORARY
SLIDING DOOR HANDLE
IN SATIN NICKEL ^{PVD}



GLIDER WINDOW
HARDWARE IN
OIL RUBBED BRONZE



CASEMENT AND AWNING
WINDOW HARDWARE
IN MATTE BLACK



ULTIMATE BI-FOLD DOOR
PANEL HARDWARE IN
MATTE BLACK

To see more architectural hardware options please visit: MarvinWindows.com/architecturalhardware.



A HERITAGE OF DOING WHAT'S RIGHT

In 1904, George Marvin arrived in the lumber town of Warroad, Minnesota, to take a job managing a grain elevator. By 1912, he'd established the Marvin Lumber & Cedar Company. More than 100 years later, members of the Marvin family, along with generations of our friends and neighbors, continue to play active and vital roles in our company, our community and our future.

Our craftsman values live at the foundation of everything we do. With techniques refined and passed on through four generations, we take pride in building windows and doors the right way. One at a time. Made to order. Crafted locally, with unmatched quality down to the smallest details—as if we were building them for our own homes.

And as a leader in innovation, Marvin® is dedicated to producing energy-efficient products that contribute to a sustainable future. After all, quality isn't just about honoring the time-tested traditions of the past, it's also about securing the utmost beauty for generations to come.



"Some companies see windows as they are, and they say, 'Why?' We dream of windows that never were and say, 'Why not?' I think that's very typical of the whole company."

Frank Marvin
Third Generation
Marvin Windows and Doors



Marvin® Windows and Doors, Warroad, MN 56763. ©2017 Marvin Windows and Doors. All rights reserved. ®Registered trademark of Marvin Windows and Doors. Part #19980876. April 2017.

Information regarding status of patent applications, and product features and specifications is subject to change without prior notice. Colors shown in printed materials are simulations and may not precisely duplicate product or finish colors. Contact your local Marvin dealer to view actual product and finish color samples.

HANDCRAFTED
IN AMERICA. 