



# Monkeytoe Caged Ladder

angled with walkoff kit | LD04

### PRODUCT DESCRIPTION

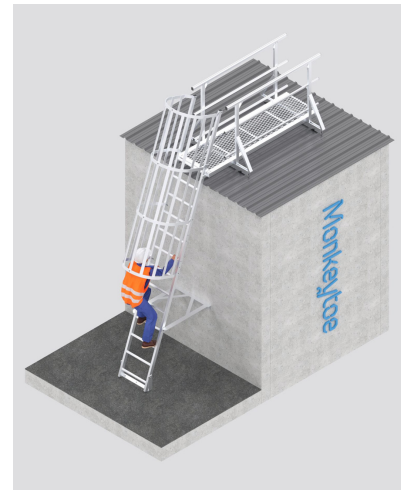
Permanent angled caged ladder system with walk-off kit that provides safe and easy access to elevated areas with ladder stiles to extend 1000mm or more above landing surface.

#### TYPICAL USES / APPLICATIONS

- Access requirements with heights 4000mm and greater, and frequent use
- Rooftop access
- Plant maintenance platforms
- Ceiling spaces
- Industrial tank access
- Hospitals, office blocks, sports centre

#### CHARACTERISTICS / ADVANTAGES

- Unique rung profile design makes ladder comfortable and easy to climb
- Low maintenance and neat appearance
- Modular design for fast and easy install
- Proprietary product with engineering and pre-configured to code compliance dimensions
- High level of safety and confidence for maintained personnel
- Single person use, 150kg rated
- Stress load tested - 1.8kN applied at 75°
- User does not require safety harness competency to use the system



### TECHNICAL DATA / MATERIALS

- All componentry and accessories manufactured from high grade structural aluminium
- Product can be powder coated
- Fixing requirements:
  - Steel purlin
    - 2 x M10 S/S bolts OR
    - 2 x M8 toggle bolts OR
    - 3 x 14G tek screws (2mm min purlin thickness)
  - Steel structure
    - 2 x M10 S/S bolts
  - Concrete (Min 25MPa)
    - 2 x (12mm x 100) true-bolt OR
    - 2 x (10mm x 100) screw bolt
  - Brick
    - 2 x (10 x 100) screw bolt
  - Composite panel
    - 2 x 10mm through bolt with spreader plate on rear, OR
    - 2 x M8 toggle bolts

## TESTS

- Accordance with AS/NZ 1657
- Designed to AS/NZS 1170
- In accordance with the building B1 structure code
- AS/NZS1891
- Compliant with OHS

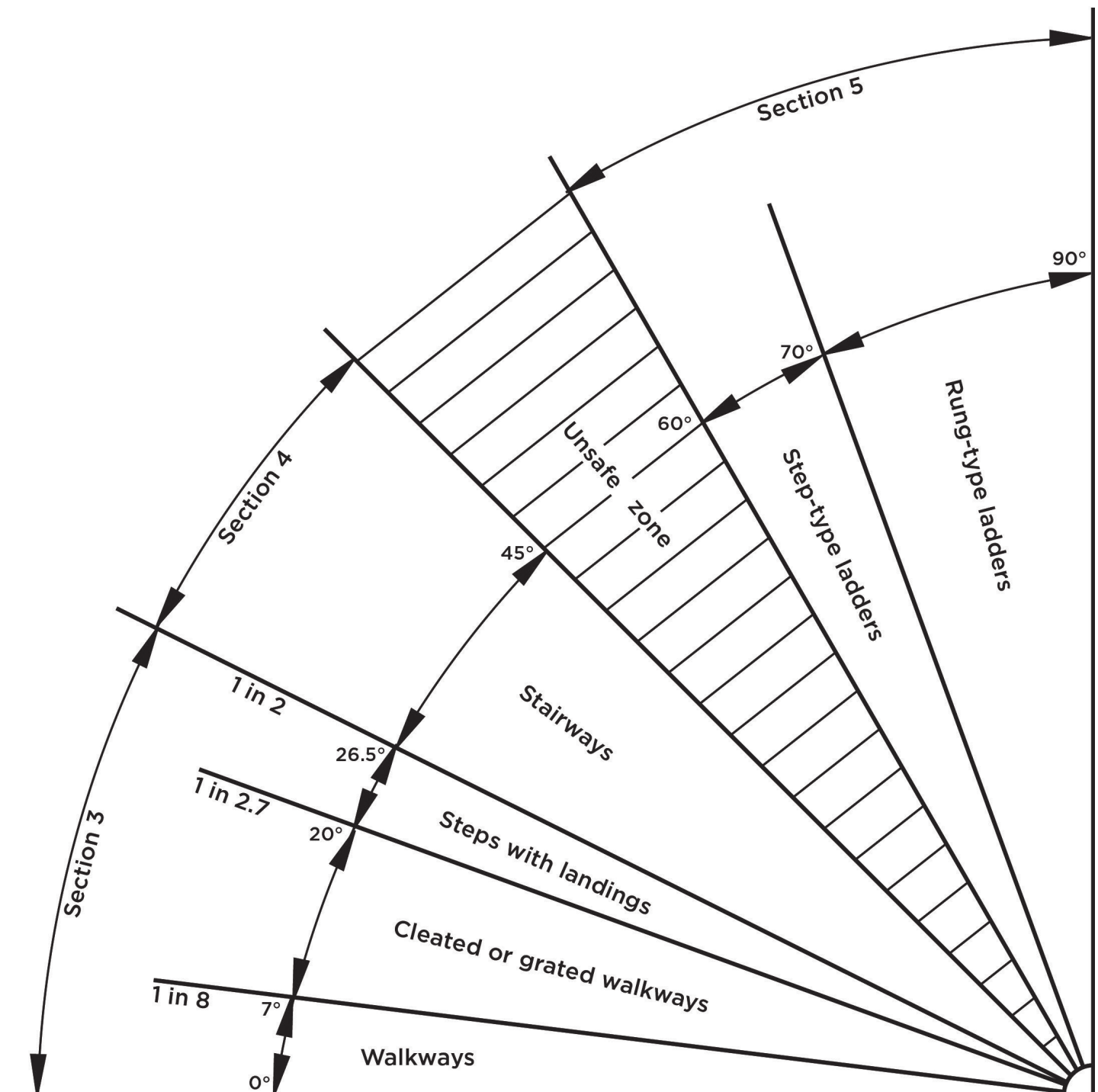
## WARRANTY

10 years product warranty

## MAINTENANCE

- Self cleaning when used in outdoor situations
- General cleaning recommended in conjunction with standard building / plant cleaning programme or policy
- Visual inspection for any damage or loose fittings is recommended annually
- No certified maintenance is required that effects lifespan or performance of product

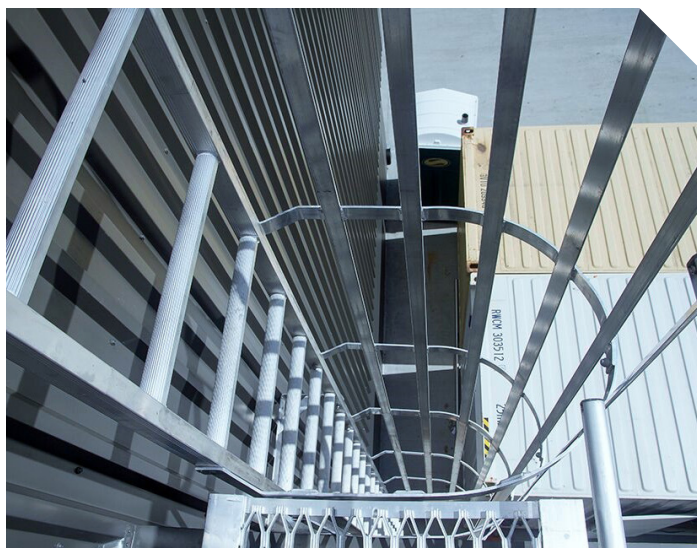
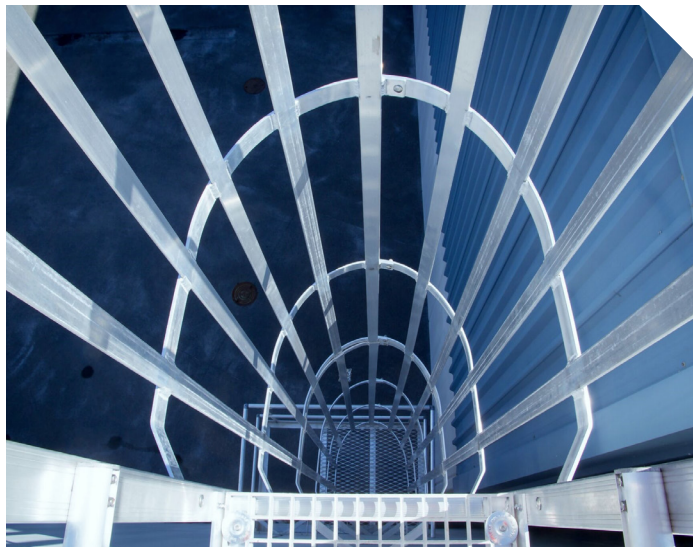
## REFERENCE



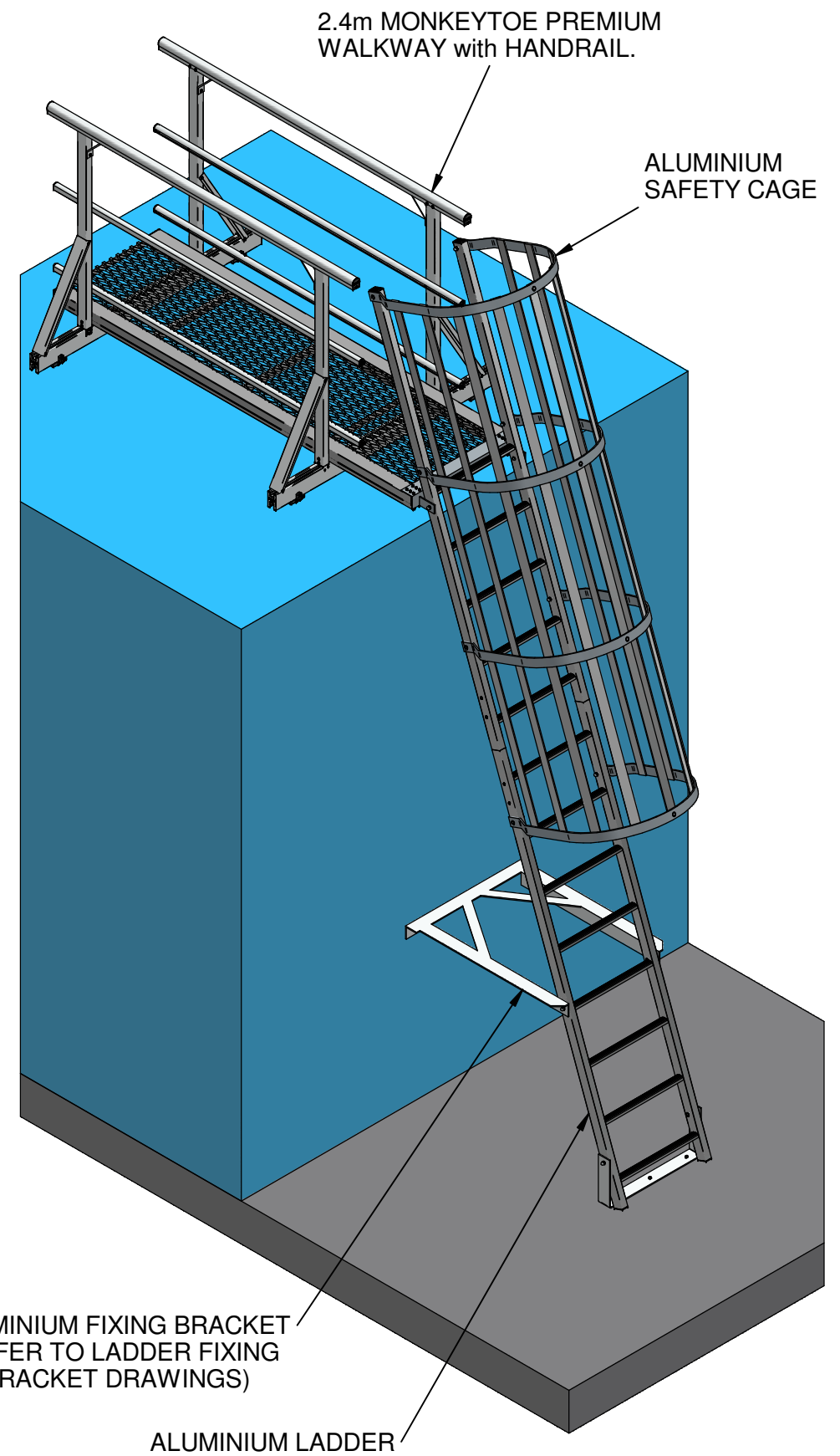
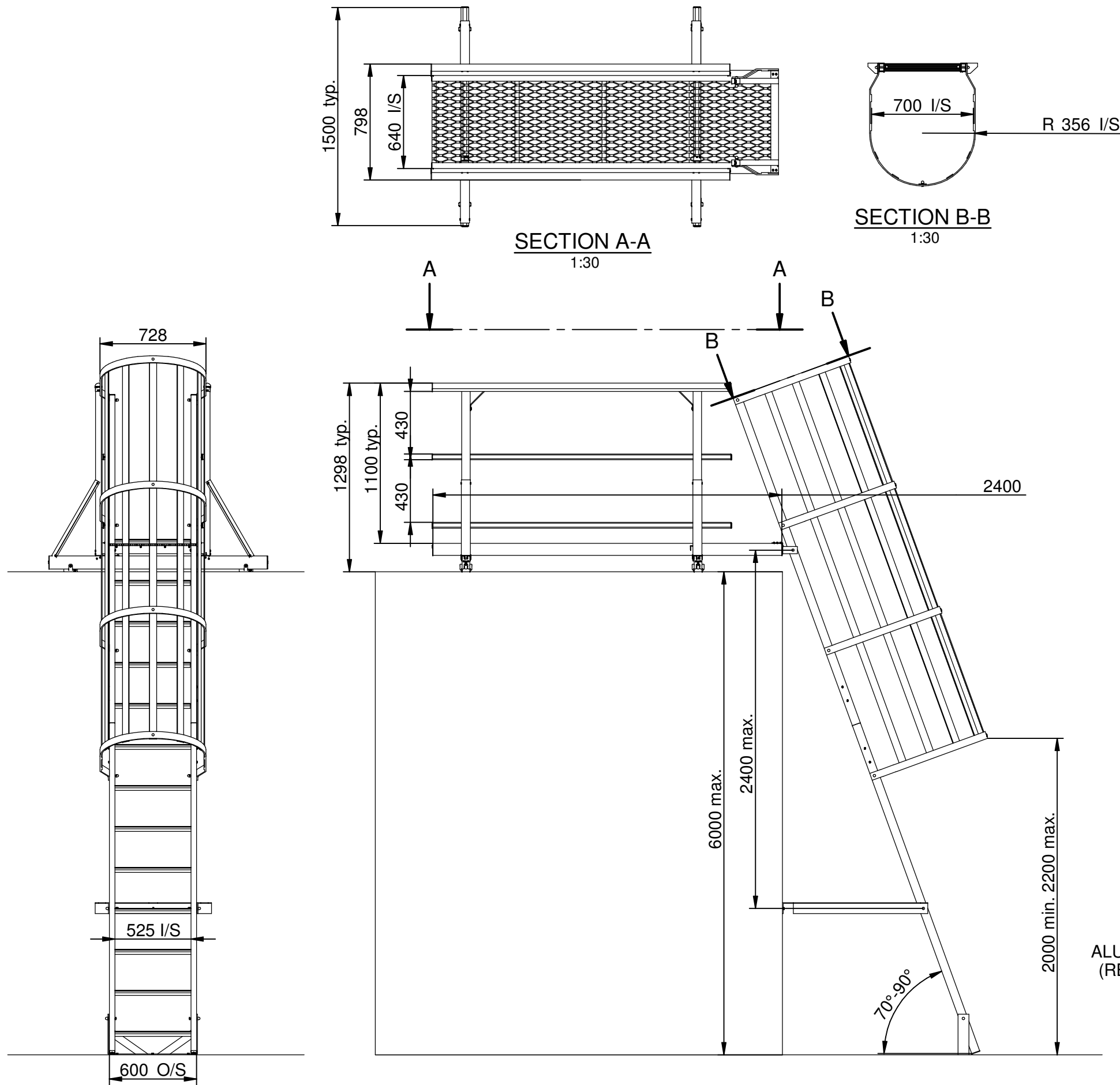


# Monkeytoe Caged Ladder

angled with walkoff kit | LD04







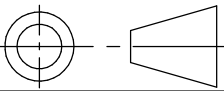
#### NOTES:

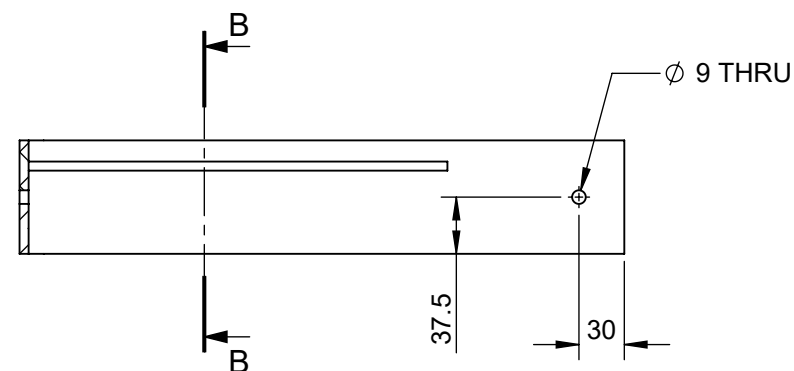
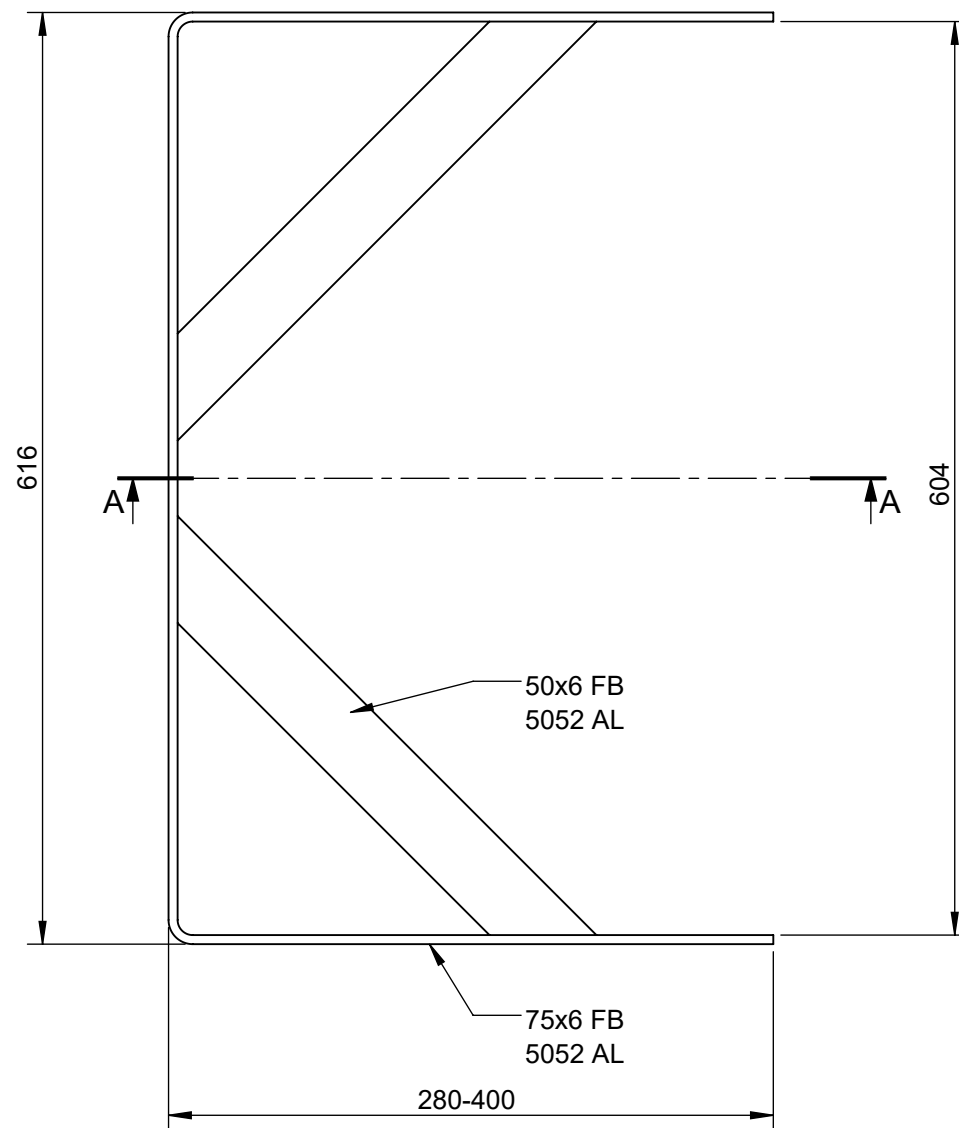
DESIGNED IN ACCORDANCE WITH  
 - AS/NZS 1170  
 - AS/NZS 1657:2018  
 - AS/NZS 1892:1996  
 - B1 & B2 DURABILITY CODES  
 - RELEVANT STATUTORY OHS CODES OF PRACTICE

**WORKING LOAD LIMIT: 150kg**

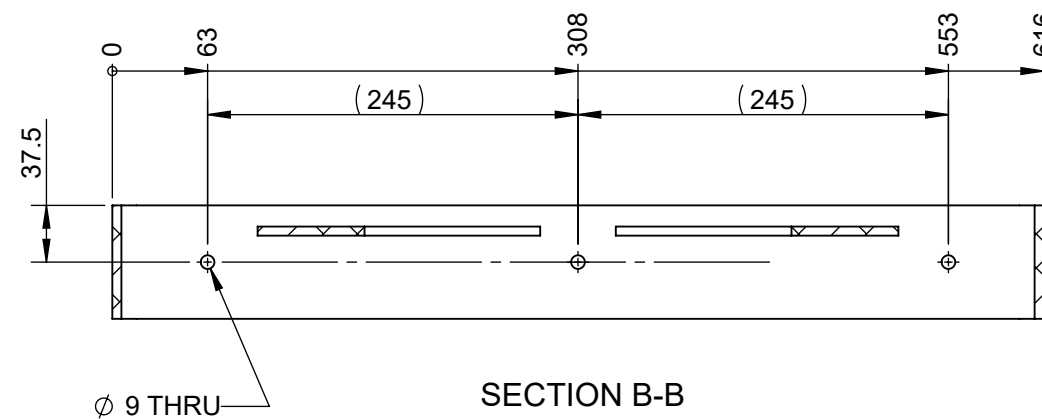
**Monkeytoe**

EVERYTHING BETTER  
 0800 658 637 - [www.monkeytoe.co.nz](http://www.monkeytoe.co.nz)

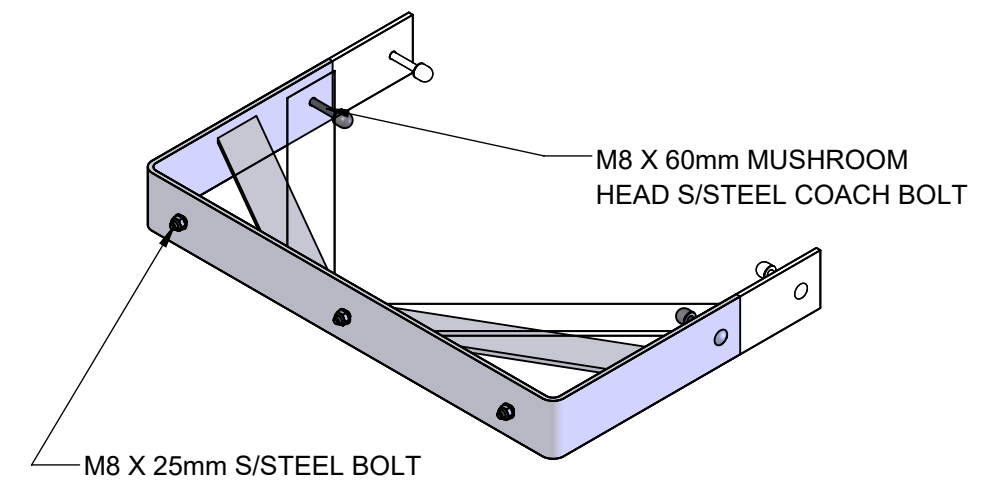
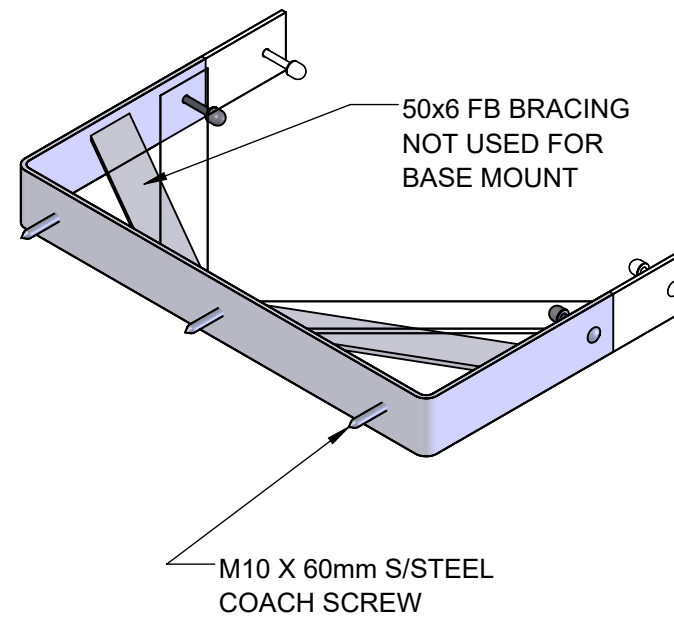
Angled Caged Ladder with Walkoff		
MONKEYTOE		
DWG No: 2004-LAD-CG-07	12/06/2018	
 DO NOT SCALE	SHEET 1 OF 1	A3
	SCALE: 1:30	REV:01
DIMENSIONS IN MILLIMETERS		



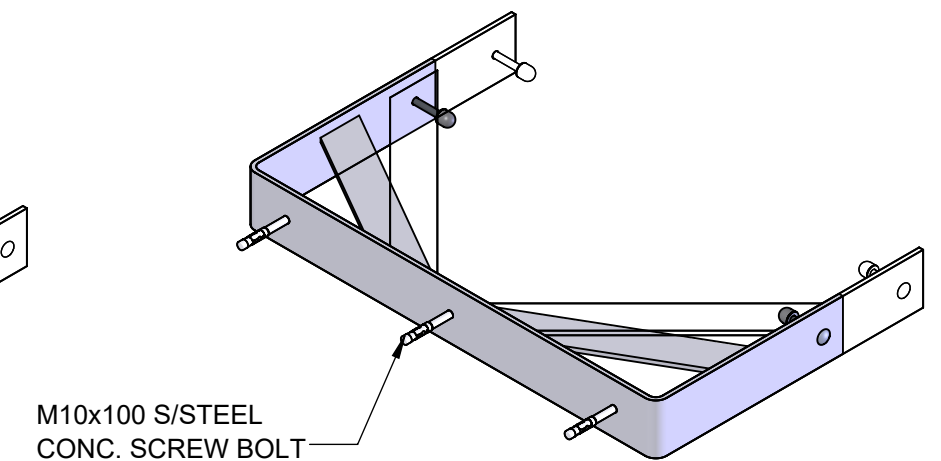
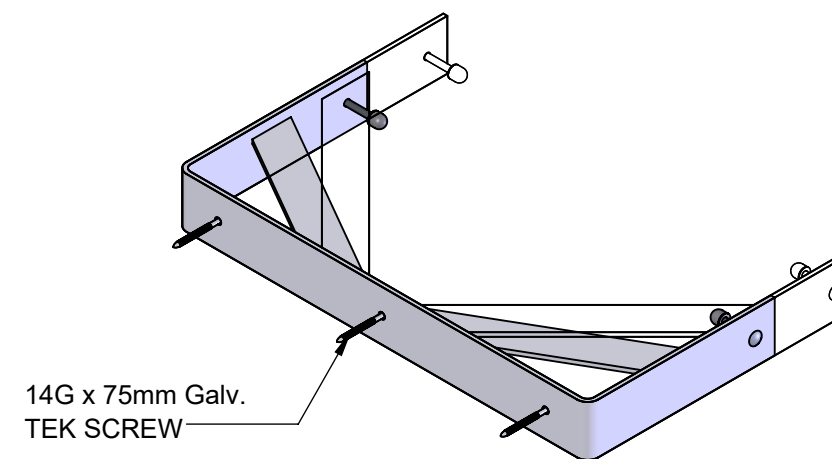
SECTION A-A



SECTION B-B

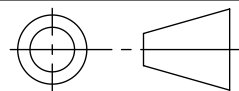


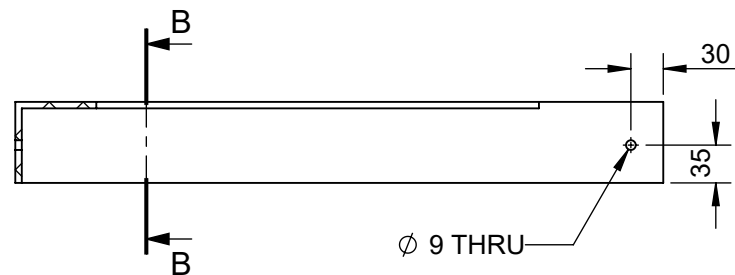
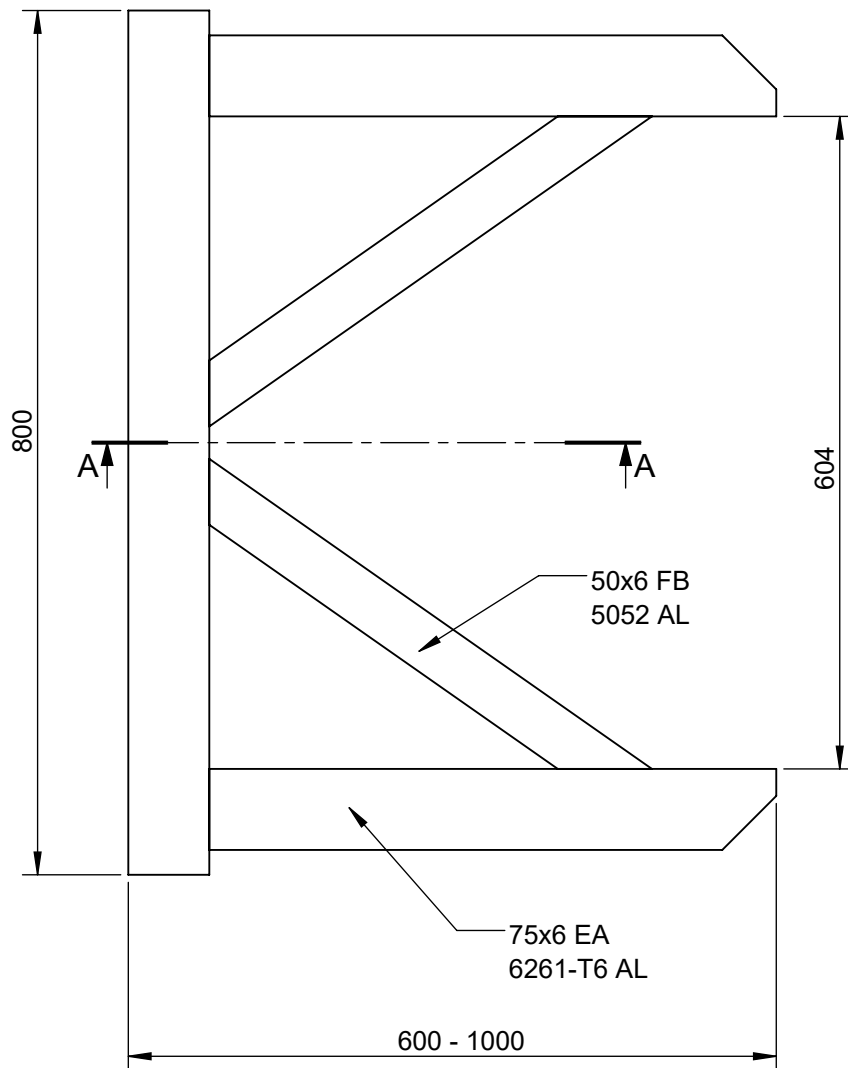
### ASSEMBLY CONFIGURATIONS



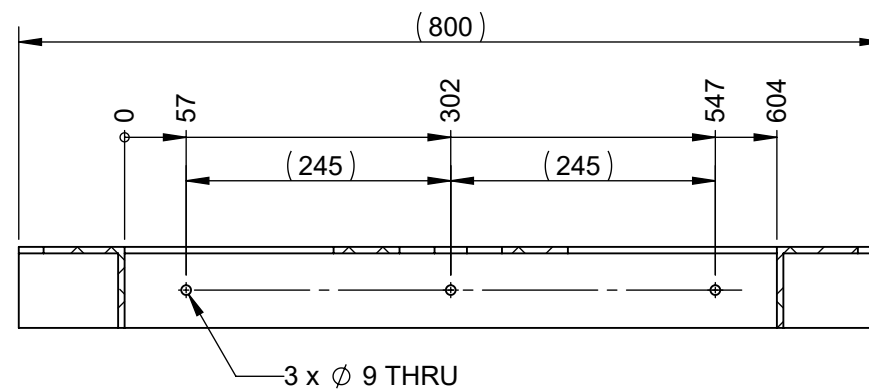
Monkeytoe

EVERYTHING BETTER  
0800 658 637 - [www.monkeytoe.co.nz](http://www.monkeytoe.co.nz)

LADDER BRACKET - 280-400mm		
MONKEYTOE		
DWG No: LD421.280-400		01/05/2018
 DO NOT SCALE	SHEET 1 OF 1	A3
	SCALE 1:5	REV:02
DIMENSIONS IN MILLIMETERS		



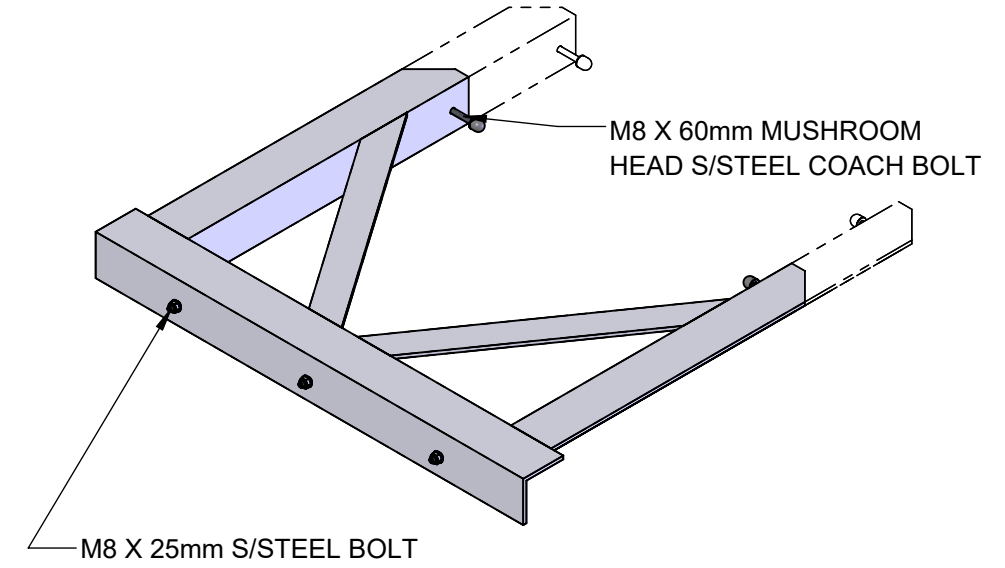
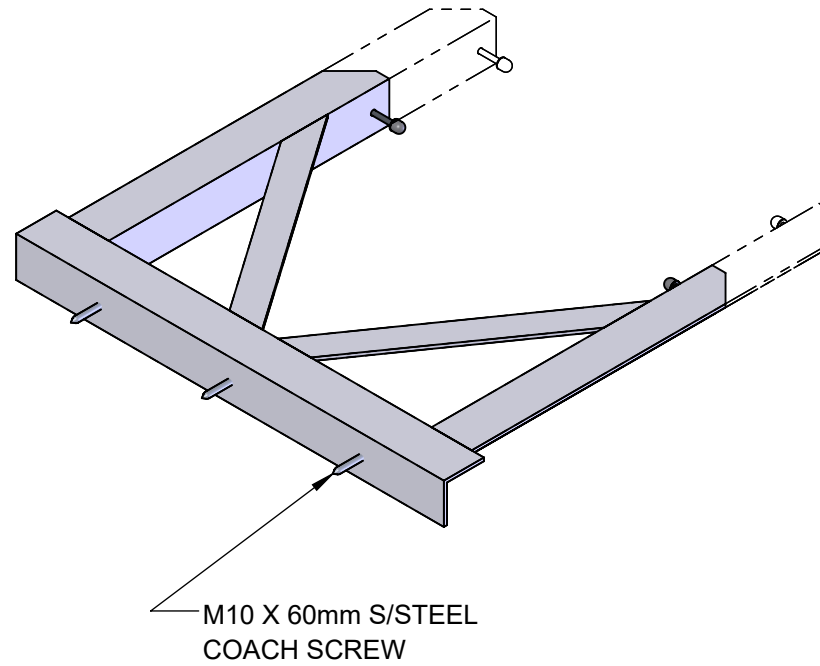
SECTION A-A



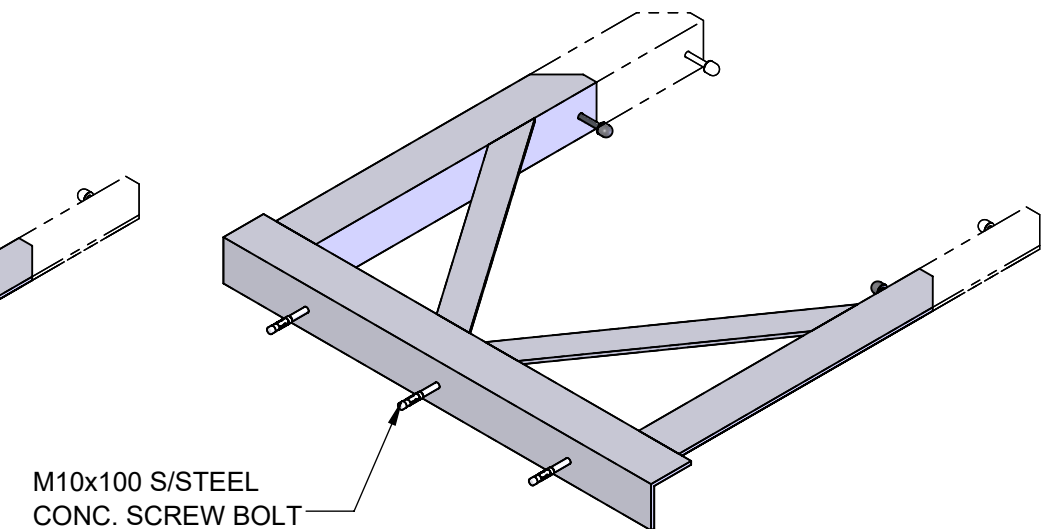
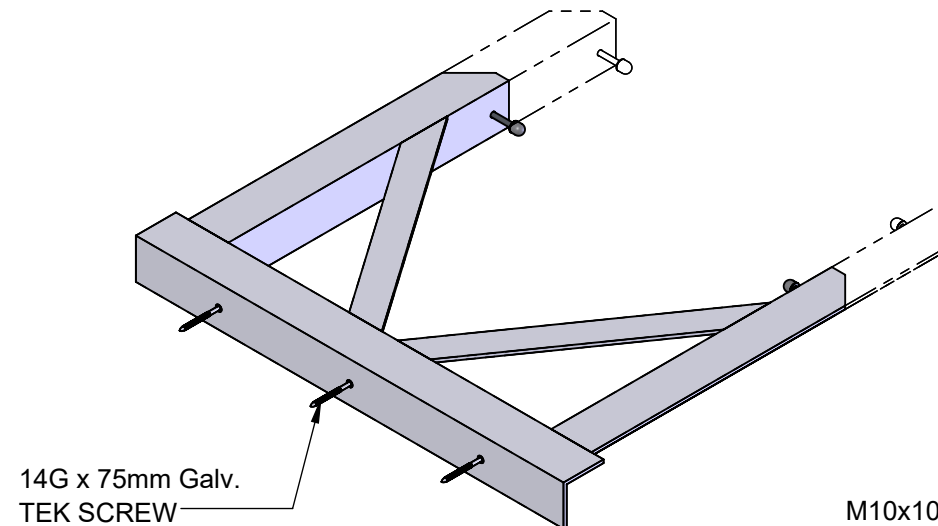
SECTION B-B

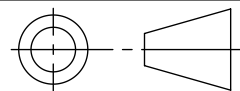
Monkeytoe

EVERYTHING BETTER  
0800 658 637 - www.monkeytoe.co.nz



### ASSEMBLY CONFIGURATIONS



LADDER BRACKET - 600-1000mm		
MONKEYTOE		
DWG No: LD421.600-1000		01/05/2015
 DO NOT SCALE	SHEET 1 OF 1	A3
	SCALE 1:7	REV:02
DIMENSIONS IN MILLIMETERS		