

Product
Supplement
January 2009







Table of Contents

Noir	2
Equinox	6
Bay Court	8
Crestwood	10
Piedmont	12
Willow Creek	14
Brisas	18
Braiden	24
Westin	28
North Park	32
Chloe	36
Trinity	38
Close-to-Ceiling	39
Ceiling Fans	40
Glenmont	43
Montreux	44
Westport	46
LED Recessed	47
Accessories	48
Channel Glass	49
Index	49

Left: P4209-104 six-light chandelier and P2729-104 wall brackets, all with P8719-01 optional shades, with Thomasville® furniture from the Fredericksburg™ collection and Thomasville Flooring® in Makata hardwood.

Noir

P4209-104
shown with optional
shades P8719-01

Extension of the Hollywood glamour style

This new family coordinates with the Midnight Waltz and Roxbury collections, as well as individual pieces that display Regency styles and Art Deco undertones.

Shiny Polished Nickel finish

Faceted clear crystal center column and bobèche

Double tiered clear crystal drops with teardrop element, creating a cascading waterfall effect

*optional
chiffon
shades*



SIX-LIGHT CHANDELIER
P4209-104 Polished Nickel
Size: 28-1/2" dia., 33" ht. Overall
ht. w/chain 108"; wire 15'.
Lamps: Six candelabra base
lamps, each 60w max.

classy crystal



P3400-104

P3400-104
shown with optional
shade P8772-01



THREE-LIGHT SEMI-FLUSH

P3400-104 Polished Nickel

Size: 13-1/2" dia., 14-1/2" ht.

Lamps: Three candelabra base
lamps, each 60w max.

Accenting optional shades create the dramatic genre effect of a film Noir in high contrast black chiffon fabric in a sheer wrap and is ideal for use in elegant settings, such as dining rooms, formal sitting rooms and dramatic entryways.



P4209-104

Noir

P4208-104

without shades



P4208-104
shown with optional
shade P8772-01

with shades



P4208-104
shown with optional
shades P8719-01



THREE-LIGHT CHANDELIER
P4208-104 Polished Nickel
Size: 16-1/2" dia., 23-1/4" ht. Overall
ht. w/chain 98"; wire 15".
Lamps: Three candelabra base
lamps, each 60w max.



OPTIONAL SHADE
P8719-01 Sheer black chiffon
Size: 4-1/2" dia., 5" ht.
7/8" candle fitter.



*sheer
chiffon*

OPTIONAL SHADE
P8772-01 Sheer black chiffon
Size: 18" dia., 8-1/2" ht.

P4210-104

Polished Nickel

NINE-LIGHT CHANDELIER

P4210-104 Polished Nickel

Two-tier.

Size: 32-1/2" dia., 35-1/2" ht.

Overall ht. w/chain 158"; wire 15'.

Lamps: Nine candelabra base lamps, each 60w max.



*clear
crystal
cascades*

WALL BRACKET

P2729-104 Polished Nickel

Two-light.

Size: 11-3/8" W., 16-3/4" ht.

Extends 5". H/CTR 7-7/8".

Lamps: Two candelabra base lamps, each 60w max.



P2729-104

P2729-104
*shown with optional
shades P8719-01*



Equinox

Inspired by ancient astronomy armillary spheres

Interlocking rings pivot for an infinite variety of positions

Antique Bronze or Burnished Silver finish

Ideal for individual use over desktops and high-end workspaces – or can be used as multiple pieces over dining room tables and kitchen islands

See page 11 for optional wall mount accessory arm



P3827-126

round and round



P3827-20

celestial curves

FOUR-LIGHT FOYER

P3827-20 Antique Bronze

P3827-126 Burnished Silver

Size: 16" dia., 18-3/8" ht. Overall
ht. w/chain 94"; wire 15'.

Lamps: Four candelabra base
lamps, each 60w max.

*Right: P3827-126 indoor lantern with Thomasville®
furniture from the Casual Retreat™ collection.*



Thomasville
LIGHTING®





P3701-09

ONE-LIGHT FOYER

P3701-09 Brushed Nickel

P3701-20 Antique Bronze

Size: 11-3/4" dia., 18-1/4"

ht. Overall ht. w/chain 94";

wire 15'.

Lamp: One medium base

lamp, 100w max.

A contemporary interpretation of antique nautical lanterns

Updated cylinders in Brushed Nickel or Antique Bronze finish

Series of interior hanging lanterns can be used traditionally as foyer pieces, as well as in a non-traditional fashion – as single pieces or in multiples of two or more in dining rooms and kitchens.

See page 11 for optional wall mount accessory arm

Bay Court



P3701-20

distressed clear glass

etched opal glass

Left: P3701-09 indoor lanterns with Thomasville Cabinetry® in Linden Maple Dover and Thomasville Flooring® in Jatoba hardwood.

Thomasville
L I G H T I N G®

Crestwood

Lanterns can be used in traditional setting, such as in outdoor covered settings or porches, but also are ideal for use in foyers and entryways, for an American Casual Urban lifestyle.

The essence of traditional gas lanterns with updated styling.

Clear beveled glass panels are framed in metal finished in antique bronze or silver burnished finishes.



classic style



Antique Bronze

TWO-LIGHT FOYER

P3902-20 Antique Bronze

P3902-126 Burnished Silver

Size: 10-7/8" sq., 17-1/8" ht.

Overall ht. w/chain 92"; wire 15'.

Lamps: Two candelabra base lamps, each 60w max.

Damp location listed.

Burnished Silver

P3903-20

THREE-LIGHT FOYER

P3903-20 Antique Bronze
P3903-126 Burnished Silver
Size: 14" sq., 21-1/8" ht.
Overall ht. w/chain 96"; wire 15'.
Lamps: Three candelabra base
lamps, each 60w max.
Damp location listed.



P3904-20



FOUR-LIGHT FOYER

P3904-20 Antique Bronze
P3904-126 Burnished Silver
Size: 18" sq., 28-1/4" ht.
Overall ht. w/chain 104"; wire 15'.
Lamps: Four candelabra base
lamps, each 60w max.
Damp location listed.

**WALL MOUNT ACCESSORY ARM
FOR INDOOR LANTERNS**



P8762-126



P8762-09



P3902-20 shown with optional
accessory arm P8762-20

P8762-09 Brushed Nickel
P8762-20 Antique Bronze
P8762-126 Burnished Silver
Size: 4-3/4" W., 14-1/4" ht. Extends
11-3/4". H/CTR 9-3/4".
Use the arm to convert the small
and medium sized lanterns to wall
bracket styles. The wire can be
threaded through the open arm end
to be direct wired to a wall box. Use
the loop through the adjustable
chain link to suspend the lantern.

P3884-20



soaring arches

candle

chaser

accents

FOUR-LIGHT FOYER

P3884-20 Antique Bronze

P3884-126 Burnished Silver

Size: 13-3/8" dia., 20-3/8" ht.

Overall ht. w/chain 95"; wire 15'.

Lamps: Four candelabra base lamps, each 60w max.

P3888-126

PIEDMONT

Simple vertical structure with open arching roof and center inspired by classic shaker design.

Antique Bronze or Burnished Silver finish

The open caged design is excellent for use in hallways, entryways, family rooms and dining tables and is suitable for a variety of styles, from American Urban to more eclectic tastes.

See page 11 for optional wall mount accessory arm



EIGHT-LIGHT FOYER

P3888-20 Antique Bronze

P3888-126 Burnished Silver

Size: 17-1/4" dia., 34" ht.

Overall ht. w/chain 109"; wire 15'.

Lamps: Eight candelabra base lamps, each 60w max.





Thomasville
LIGHTING

Willow Creek

Artisan hand-forged ironwork, gives each Willow Creek piece a unique, hand-crafted look.

Weathered auburn finish with subtle textured forged leaves

Unique pleated cased opal glass drum shades with a topaz finish.

THREE-LIGHT CHANDELIER

P4131-114 Weathered Auburn
Size: 19" dia., 22" ht. Overall ht. w/chain 97"; wire 15'.
Lamps: Three medium base lamps, each 100w max.



Left

and



Right

WALL BRACKET – LEFT

P2799-114 Weathered Auburn
Two-light.
Size: 16-5/8" W., 17-1/2" ht.,
Extends 9". H/CTR 10".
Lamps: Two medium base
lamps, each 100w max.
Damp location listed.

P2799-114

WALL BRACKET – RIGHT

P2800-114 Weathered Auburn
Two-light.
Size: 16-5/8" W., 17-1/2" ht.,
Extends 9". H/CTR 10".
Lamps: Two medium base
lamps, each 100w max.
Damp location listed.

P2800-114

Right: P4132-114 six-light chandelier, P2799-114 wall bracket and P2800-114 wall bracket with furniture from the Cinnamon Hill™ collection and the Celestial bench from Thomasville®.





Thomasville
LIGHTING.

Willow Creek

Weathered Auburn finish with subtle textured forged leaves

Organic forms fuse with modern lines to create an updated Global craftsmen feel

Hand-forged iron work

Unique pleated glass drum shades are incased glass with topaz finish



P3463-114

TWO-LIGHT SEMI-FLUSH

P3463-114 Weathered Auburn Chain and ceiling mounts both included.

Size: 16" dia., 16-1/2" ht. Overall ht. w/chain 92"; wire 15'.

Lamps: Two medium base lamps, each 100w max.



P3463-114

P3908-114



ONE-LIGHT PENDANT

P5133-114 Weathered Auburn Includes two 6", one 12" and two 15" stems with 90° swivel.

Size: 14-3/8" dia., 22" ht. Overall ht. w/stem 79"; wire 10'.

Lamp: One medium base lamp, 150w max.

P5133-114



FOUR-LIGHT FOYER

P3908-114 Weathered Auburn Size: 19-5/8" dia., 32-1/2" ht. Overall ht. w/chain 107-1/2"; wire 15'.

Lamps: Four medium base lamps, each 100w max.

P5101-114



MINI-PENDANT

P5101-114 Weathered Auburn
Includes two 6", one 12" and two 15" stems with 90° swivel.
Size: 11-3/4" dia., 20-3/4" ht.
Overall ht. w/stem 75"; wire 10'.
Lamp: One medium base lamp, 150w max.

Weathered Auburn

P4132-114



SIX-LIGHT CHANDELIER

P4132-114 Weathered Auburn
Size: 30" dia., 28-3/8" ht. Overall ht. w/chain 103"; wire 15'.
Lamps: Six medium base lamps, each 100w max.

P4130-114



LINEAR CHANDELIER

P4130-114 Weathered Auburn
Two-light.
Size: 44" L., 13" W., 34" ht.
Overall ht. w/chain 109"; wire 15'.
Lamps: Two medium base lamps, each 150w max.

spiraling scrolls



soft pleated glass

Thomasville
LIGHTING®

Brisas

"Brisas," meaning "soft tropical breeze" features elegant bamboo-inspired elements

Leaf clusters and banded metal arms delicately complement the scrollwork, which is joined together by bands depicting rattan wrapping

A Burnished Ebony finish is complemented by soft golden highlights and antique mist with etched bamboo pattern glass.

P3720-127

Burnished Ebony



FOUR-LIGHT FOYER

P3720-127 Burnished Ebony
Size: 21" dia., 46-3/4" ht. Overall
ht. w/chain 122"; wire 15'.
Lamps: Four medium base lamps,
each 100w max.

bamboo inspired accents



P5155-127

etched bamboo pattern

MINI-PENDANT

P5155-127 Burnished Ebony
 Size: 9-3/4" dia., 18" ht.
 Overall ht. w/chain 93"; wire 15'.
 Lamp: One medium base lamp,
 100w max.



P3795-127

**THREE-LIGHT
 INVERTED PENDANT**
P3795-127 Burnished Ebony
 Size: 26" dia., 38-1/4" ht. Overall
 ht. w/chain 114"; wire 15'.
 Lamps: Three medium base
 lamps, each 100w max.

elegant

etching



WALL SCONCE

P7100-127 Burnished Ebony
 One-light.
 Size: 18-1/2" W., 13" ht.
 Extends 7". H/CTR 4-1/2".
 Lamp: One medium base
 lamp, 100w max.



Brisas

THREE-LIGHT SEMI-FLUSH

P3905-127 Burnished Ebony
Chain and ceiling mounts both included.

Size: 17" dia., 21-1/2" ht. Overall ht. w/chain 96"; wire 15'.

Lamps: Three medium base lamps, each 100w max.



P3905-127



P4384-127

LINEAR CHANDELIER

P4384-127 Burnished Ebony
Three-light.

Size: 41-3/4" L., 9-3/4" W., 34-3/4" ht.
Overall ht. w/chain 110"; wire 15'.

Lamps: Three medium base lamps, each 100w max.

Burnished Ebony



NINE-LIGHT CHANDELIER
P4429-127 Burnished Ebony
Two-tier.
Size: 35" dia., 45-1/2" ht.
Overall ht. w/chain 169"; wire 15'.
Lamps: Nine medium
base lamps, each 100w max.

golden highlights



Brisas

**THREE-LIGHT
CHANDELIER**

P4383-127 Burnished Ebony
Size: 23" dia., 30-1/2" ht.
Overall ht. w/chain 106"; wire 15'.
Lamps: Three medium
base lamps, each 100w max.

P4383-127



Burnished Ebony

P4423-127



SIX-LIGHT CHANDELIER

P4423-127 Burnished Ebony
Size: 32-1/2" dia., 36" ht.
Overall ht. w/chain 111"; wire 15'.
Lamps: Six medium base lamps,
each 100w max.

etched bamboo pattern

your choice –



P2761-127



P2762-127

Brisas Bath

up

or

down



P2763-127



P2764-127

Product No.	Finish	Description	Size	Lamp(s)
P2761-127	Burnished Ebony	One-light*	15-1/4" W., 13" ht. Extends 6-1/2".	1 medium base, 100w max.
P2762-127	Burnished Ebony	Two-light*	18" W., 13-1/2" ht. Extends 6-1/2".	2 medium base, each 100w max.
P2763-127	Burnished Ebony	Three-light*	25" W., 12-3/4" ht. Extends 6-1/2".	3 medium base, each 100w max.
P2764-127	Burnished Ebony	Four-light*	35" W., 13" ht. Extends 6-1/2".	4 medium base, each 100w max.

*Damp location listed



P7072-84

WALL SCONCE

P7072-84 Espresso
One-light.
Size: 13-1/4" W., 7" ht.
Extends 6-3/4".
Lamp: One medium base
lamp, 100w max.



P5175-84

MINI-PENDANT

P5175-84 Espresso
Includes two 6", one 12" and two
15" stems with 90° swivel.
Size: 6" dia., 14-1/2" ht.
Overall ht. w/stem 72"; wire 10'.
Lamp: One medium base lamp,
100w max.

Braiden

Silhouetted chandeliers framed by delicate woven wire elements and braided metal details

Globally-influenced woven wire accents ideal for showcasing other global and hand woven home décor accessories in areas such as living rooms, dining rooms and bedrooms.

misted wheat glass



P4485-84

FIVE-LIGHT CHANDELIER

P4485-84 Espresso
Size: 23-1/2" dia., 26" ht. Overall
ht. w/chain 101"; wire 15'.
Lamps: Five medium base
lamps, each 100w max.

P3890-84

earthy Espresso



**THREE-LIGHT INVERTED
PENDANT**

P3890-84 Espresso

Size: 24" dia., 28-1/4" ht. Overall
ht. w/chain 103"; wire 15'.

Lamps: Three medium base
lamps, each 100w max.

*wispy
woven
wire*



P3739-84

TWO-LIGHT SEMI-FLUSH

P3739-84 Espresso

Chain and ceiling mounts both included.

Size: 15" dia., 16" ht. Overall ht. w/chain 91"; wire 15'.

Lamps: Two medium base lamps, each 75w max.



P3739-84

Braiden

Woven wire center font accents and scalloped glass frame. The glass woven wire cups are optional.



P4484-84

THREE-LIGHT CHANDELIER

P4484-84 Espresso

Size: 20-1/4" dia., 23-3/4" ht. Overall ht. w/chain 99"; wire 15'.

Lamps: Three medium base lamps, each 100w max.

without wire cups



P4484-84

with wire cups

P4487-84

SIX-LIGHT CHANDELIER

P4487-84 Espresso

Size: 30" dia., 34-1/2" ht. Overall
ht. w/chain 158"; wire 15'.

Lamps: Six medium base lamps,
each 100w max.

*misted wheat
glass*

hand artisan wirework

Westin

Additions to the popular Westin collection are now available, offering even more options for this simple, modern and elegant family. The Westin family features a sculptured, linear look with a touch of metal, perfect for today's understated interiors.



WALL SCONCE

P7127-09 Brushed Nickel

P7127-20 Antique Bronze

Two-light.

Size: 12-3/4" dia., 13-5/8" ht.

Extends 5-7/8". H/CTR9-3/4".

Lamps: Two candelabra base lamps, each 60w max.



MINI-PENDANT

P5167-09 Brushed Nickel

P5167-20 Antique Bronze

Includes two 6", one 12" and two 15" stems with 90° swivel.

Size: 3-3/4" dia., 9-3/4" ht.

Overall ht. w/stem 67"; wire 10'.

Lamp: One medium base lamp, 100w max.

Socket tool included (pg. 48).



P3757-20EBWB

THREE-LIGHT FOYER

P3757-09EBWB Brushed Nickel

P3757-20EBWB Antique Bronze

Size: 18-1/8" dia., 25" ht.

Overall ht. w/chain 100"; wire 15'.

Lamps: Three 13w CFL, included.

GU24 base.



The new Westin CFL family recently received the 2008 Lighting for Tomorrow award in the indoor fixture CFL family category for its innovative use of state-of-the-art and energy efficient technology creating decorative – yet functional – fixtures.

Incorporating a minimalist design style, this award-winning collection represents a shift in trends to highlight a less complicated, clean design.

Westin CFL

P3509-20EBWB



THREE-LIGHT FOYER

P3509-09EBWB Brushed Nickel

P3509-20EBWB Antique Bronze

Size: 12" dia., 26" ht. Overall ht. w/chain 101"; wire 15'.

Lamps: Three 13w CFL, included.

GU24 base.



P3509-09EBWB



P5108-09EBWB



P5108-20EBWB



MINI-PENDANT

P5108-09EBWB Brushed Nickel

P5108-20EBWB Antique Bronze

Includes two 6", one 12" and two 15" stems with 90° swivel.

Size: 4" dia., 6-3/4" ht. Overall ht. w/stem 120"; wire 15'.

Lamp: One 13w CFL, included.

GU24 base.



Westin CFL

Arching, elegant arms with strap accents compliment the etched glass in the Westin line.

Fixtures are available in Brushed Nickel and Antique Bronze finishes and use the latest dedicated GU-24 lamp technology.

Included are 13w CFL GU-24 lamps and can be used with 15w CFL GU-24 dimmable lamps that use a standard dimmer for those seeking dimming capability.

LINEAR CHANDELIER

P4435-09EBWB Brushed Nickel

P4435-20EBWB Antique Bronze

Four-light. Stem Mounted

Size: 35" L., 12-1/2" W., 29" ht.

Overall ht. w/stem 79"; wire 15'.

Lamps: Four 13w CFL, included. GU24 base.



FIVE-LIGHT CHANDELIER

P4436-09EBWB Brushed Nickel

P4436-20EBWB Antique Bronze

Size: 22" dia., 26-3/8" ht. Overall ht. w/chain 101"; wire 15'.

Lamps: Five 13w CFL, included. GU24 base.



P3290-20EBWB



P3290-09EBWB



CLOSE-TO-CEILING

P3290-09EBWB Brushed Nickel
P3290-20EBWB Antique Bronze
 Two light.
 Size: 14" dia., 7" ht.
 Lamps: Two 3w CFL, included.
 GU24 base.
 Damp location listed.



P2794-20EBWB



P2794-09EBWB



One-light

Westin Bath

or three-light



P2796-20EBWB



P2796-09EBWB

Product No.	Finish	Description	Size	Lamp(s)
P2794-09EBWB	Brushed Nickel	One-light*	4-3/4" W., 8-1/4" ht.	1 13w CFL. GU24 base.
P2794-20EBWB	Antique Bronze		Extends 6-1/4".	included
P2796-09EBWB	Brushed Nickel	Three-light*	21" W., 8-1/4" ht.	3 13w CFL. GU24 base.
P2796-20EBWB	Antique Bronze		Extends 6-1/4".	included



*Damp location listed



North Park

Clean linear forms, twin arching arms and square etched glass shades create a modern interpretation of two blended styles: Craftsman and Mission.

Available in either Brushed Nickel finish, for a modern approach or Venetian Bronze finish, for a classic look, this collection was developed to reflect the growing trend in Craftsman style architecture and newer hardware styles.

P4003-74



P4003-09



LINEAR CHANDELIER

P4003-09 Brushed Nickel

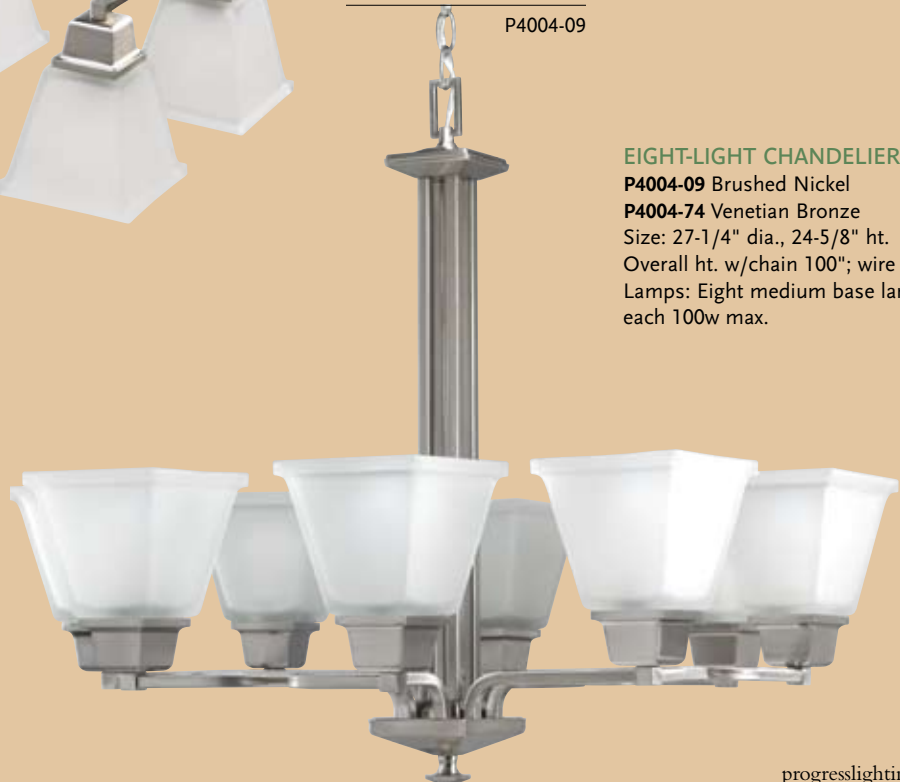
P4003-74 Venetian Bronze

Six-light.

Size: 27-1/4" L., 14-1/4" W.,
22-5/8" ht. Overall ht. w/chain
98"; wire 15'.

Lamps: Six medium base lamps,
each 100w max.

P4004-09



EIGHT-LIGHT CHANDELIER

P4004-09 Brushed Nickel

P4004-74 Venetian Bronze

Size: 27-1/4" dia., 24-5/8" ht.

Overall ht. w/chain 100"; wire 15'.

Lamps: Eight medium base lamps,
each 100w max.

MINI-PENDANT

P5135-09 Brushed Nickel
P5135-74 Venetian Bronze
Includes two 6", one 12" and two 15" stems with 90° swivel.
Size: 5-1/2" dia., 7-1/8" ht.
Overall ht. w/stem 64-1/8";
wire 15'.
Lamp: One medium base lamp, 100w max.



P5135-09



P5135-74

P3907-74

EIGHT-LIGHT FOYER

P3907-09 Brushed Nickel
P3907-74 Venetian Bronze
Two-tier.
Size: 18" dia., 32" ht. Overall ht. w/chain 155"; wire 15'.
Lamps: Eight candelabra base lamps, each 60w max.



P4053-74

square etched shades

TWELVE-LIGHT CHANDELIER

P4053-09 Brushed Nickel
P4053-74 Venetian Bronze
Two-tier.
Size: 27-1/4" dia., 30-1/8" ht.
Overall ht. w/chain 154"; wire 15'.
Lamps: Twelve medium base lamps, each 100w max.

North Park

P4001-74



P4001-09



FOUR-LIGHT CHANDELIER

P4001-09 Brushed Nickel

P4001-74 Venetian Bronze

Size: 21" dia., 19-5/8" ht. Overall
ht. w/chain 95"; wire 15'.

Lamps: Four medium base
lamps, each 100w max.

P4002-74

Antique Bronze

FOUR-LIGHT CHANDELIER

P4002-09 Brushed Nickel

P4002-74 Venetian Bronze

Size: 21" dia., 22-3/4" ht. Overall
ht. w/chain 98"; wire 15'.

Lamps: Four medium base
lamps, each 100w max.



P3906-09

Brushed Nickel

TWO-LIGHT INVERTED PENDANT

P3906-09 Brushed Nickel

P3906-74 Venetian Bronze

Size: 16" dia., 24-1/8" ht. Overall
ht. w/chain 100"; wire 15'.

Lamps: Two medium base
lamps, each 100w max.





P3852-74

CLOSE-TO-CEILING

Two light.

P3852-09 Brushed Nickel

P3852-74 Venetian Bronze

Size: 15" dia., 7-1/8" ht.

Lamps: Two medium base lamps, each 100w max.

Damp location listed.



P3597-09

SEMI-FLUSH

Two light.

P3597-09 Brushed Nickel

P3597-74 Venetian Bronze

Chain and ceiling mounts both included.

Size: 12-3/4" dia., 13-5/8" ht.

Overall ht. w/chain 89"; wire 15".

Lamps: Two medium base lamps, each 100w max.



P2743-74

mount up

North Park Bath



P2745-09

or down



P2738-74



P2733-09

Product No.	Finish	Description	Size	Lamp(s)
P2733-09	Brushed Nickel	One-light*	5-1/2" W., 10-1/8" ht.	1 medium base,
P2733-74	Venetian Bronze		Extends 7-1/8".	100w max.
P2738-09	Brushed Nickel	Two-light*	14-1/4" W., 9" ht.	2 medium base,
P2738-74	Venetian Bronze		Extends 7-1/8".	each 100w max.
P2743-09	Brushed Nickel	Three-light*	23" W., 9" ht.	3 medium base,
P2743-74	Venetian Bronze		Extends 7-1/8".	each 100w max.
P2745-09	Brushed Nickel	Four-light*	32-1/8" W., 9" ht.	4 medium base,
P2745-74	Venetian Bronze		Extends 7-1/8".	each 100w max.

*Damp location listed

Chloe

Simple, straight forward design with a twist.

Elegant Copper Bronze metallic finish complements the elongated suspended metal tubes.

Unique oval shaped cased opal glass with white-on-white abstract floral pattern that conveys a simple, lighter lifestyle.

white-on-white



P4051-124

SIX-LIGHT CHANDELIER

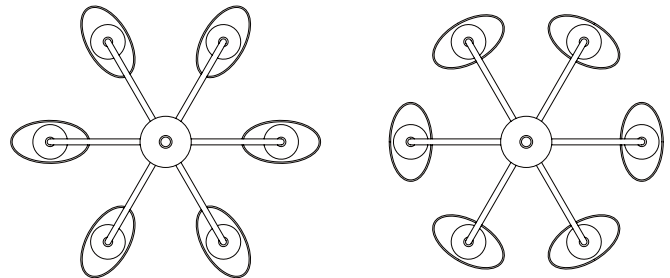
P4051-124 Copper Bronze
Size: 24-1/4" dia., 25" ht. Overall
ht. w/chain 100"; wire 15'.
Lamps: Six medium base lamps,
each 100w max.



P5028-124

MINI-PENDANT

P5028-124 Copper Bronze
Includes two 6", one 12" and
two 15" stems with 90° swivel.
Size: 5-1/4" dia., 9-1/4" ht.
Overall ht. w/stem 66"; wire 10'.
Lamp: One medium base lamp,
100w max.



Unique oval shades can be
mounted in either configuration

Copper Bronze



P2715-124



Up....

P2755-124

Chloe Bath



... or down

P2756-124



P2716-124

Product No.	Finish	Description	Size	Lamp(s)
P2715-124	Copper Bronze	One-light*	5-1/4" W., 10-3/8" ht. Extends 5-5/8".	1 medium base, 100w max.
P2716-124	Copper Bronze	Two-light*	14-1/2" W., 11-1/8" ht. Extends 5-5/8".	2 medium base, each 100w max.
P2755-124	Copper Bronze	Three-light*	24" W., 11-1/8" ht. Extends 5-5/8".	3 medium base, each 100w max.
P2756-124	Copper Bronze	Four-light*	33-1/4" W., 11-1/8" ht. Extends 5-5/8".	4 medium base, each 100w max.

*Damp location listed

Trinity

Brushed Nickel, Polished Brass, Antique Bronze or Cobblestone finish

Etched glass

See Progress Lighting Catalog 128 for more of our popular Trinity collection

Brushed Nickel



P4365-20



Antique Bronze

FIFTEEN-LIGHT CHANDELIER

P4365-09 Brushed Nickel

P4365-10 Polished Brass

P4365-20 Antique Bronze

P4365-33 Cobblestone

Three-tier.

Size: 43-3/4" dia., 43-5/8" ht. Overall ht. w/chain 167"; wire 15'.

Lamps: Fifteen medium base lamps, each 75w max.

New Bedford

Brushed Nickel or Antique Bronze finish
Etched seeded glass

See Progress Lighting Catalog 128 for more of our popular New Bedford collection



P3866-09

**ONE-LIGHT
CLOSE-TO-CEILING**
P3866-09 Brushed Nickel
P3866-20 Antique Bronze
Size: 11" dia., 5-1/2" ht.
Lamp: One medium base lamp, 100w max.
Damp location listed.



P3462-09

P3462-20



ONE-LIGHT FOYER
P3462-09 Brushed Nickel
P3462-20 Antique Bronze
Size: 8" dia., 11" ht.
Lamp: One medium base lamp, 100w max.



P3867-20

**TWO-LIGHT
CLOSE-TO-CEILING**
P3867-09 Brushed Nickel
P3867-20 Antique Bronze
Size: 13" dia., 5-3/4" ht.
Lamps: Two medium base lamps, each 75w max.
Damp location listed.



P3816-30EBWB

Melon Glass CFL

**ONE-LIGHT
CLOSE-TO-CEILING**
P3816-09EBWB Brushed Nickel
P3816-20EBWB Antique Bronze
P3816-30EBWB White
Size: 11-3/8" dia., 6" ht.
Lamp: One 13w CFL, included (non-dimmable). GU24 base.
Damp location listed.



P3817-09EBWB



**TWO-LIGHT
CLOSE-TO-CEILING**
P3817-09EBWB Brushed Nickel
P3817-20EBWB Antique Bronze
P3817-30EBWB White
Size: 13-1/4" dia., 7" ht.
Lamps: Two 13w CFL, included (non-dimmable). GU24 base.
Damp location listed.



P3817-20EBWB



Ceiling Fans

60" Signature Fan

P2532-09 Brushed Nickel with reversible Natural Cherry/Cherry blades

P2532-20 Antique Bronze with reversible Medium Cherry/Classic Walnut blades

P2532-80 Forged Black with reversible Dark Cherry/Dark Walnut blades

Remote control included. Three speed fan operation and full range dimming for light. Uplight and downlight wired separately for independent or simultaneous control.

Size: 60" dia., 16-5/8" ht.

Lamps: Four candelabra base uplight lamps (included), each 7w.



30-year limited warranty

SureConnect® blade arms

12° blade pitch

45° canopy (up to 12:12 ceiling pitch)

Triple capacitor 188mm x 20mm reversible motor

80" lead wires

Plywood blade construction

Light fixture adaptable

CUL

ENERGY INFORMATION

AT HIGH SPEED

Airflow: 6,939 cubic feet per minute

Electricity Use: 80 watts (excludes lights)

Airflow Efficiency: 86 cubic feet per minute per watt

Compare: 49" to 60" ceiling fans have airflow efficiencies ranging from approximately 51 to 176 cubic feet per minute per watt at high speed.



P2532-20
Medium Cherry blades



Classic Walnut blades



P2532-80
Dark Cherry blades



Dark Walnut blades



P2532-09
Natural Cherry blades



Cherry blades



P2618-01 Fan/Light Remote

Provides fan speed and light control from convenient handheld remote. Compatible with non-dimmable compact fluorescent lamps. For single pole applications. Receiver fits in fan canopy.

52" Patio Fan

P2502-80 Forged Black with Toasted Oak blades
Indoor/outdoor fan with stainless steel hardware.
Five blades.
Size: 52" dia., 17-3/8" ht. 12-3/16" CTC ht.

- 15-year limited warranty
- SureConnect® blade arms
- 12° blade pitch
- Dual mount
- Quick-Install canopy
- Triple capacitor, 153mm x 17.5mm reversible motor
- 72" lead wires
- ABS all-weather blades
- Light fixture adaptable
- CUL listed for wet locations

ENERGY INFORMATION AT HIGH SPEED

Airflow: 5,061 cubic feet per minute

Electricity Use: 56 watts (excludes lights)

Airflow Efficiency: 90 cubic feet per minute per watt

Compare: 49" to 60" ceiling fans have airflow efficiencies ranging from approximately 51 to 176 cubic feet per minute per watt at high speed.



P2502-80
Toasted Oak blades

30" Fan

P2529-09 Brushed Nickel with reversible White/Natural Cherry blades

P2529-20 Antique Bronze with reversible Classic Walnut/Medium Cherry blades

P2529-30W White with White blades

Size: 30" dia., 13-1/4" ht. 9-7/16" CTC ht.

- 15-year limited warranty
- 18° blade pitch
- Quick-Install canopy (up to 4:12 ceiling pitch)
- Triple capacitor 153mm x 10mm reversible motor
- 80" lead wires
- MDF blade construction
- Light fixture adaptable
- CUL



P2529-09
White blades



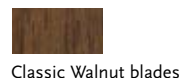
Natural Cherry blades



P2529-30W
White blades



P2529-20
Medium Cherry blades



Classic Walnut blades

ENERGY INFORMATION AT HIGH SPEED

Airflow: 2,398 cubic feet per minute

Electricity Use: 46 watts (excludes lights)

Airflow Efficiency: 52 cubic feet per minute per watt

Compare: 36" to 48" ceiling fans have airflow efficiencies ranging from approximately 71 to 86 cubic feet per minute per watt at high speed.

42" Builder Fan

P2500-09 Brushed Nickel with reversible Cherry/Natural Cherry blades

P2500-20 Antique Bronze with reversible Classic Walnut/Medium Cherry blades

Size: 42" dia., 12-1/4" ht.
8-1/2" CTC ht.

15-year limited warranty

SureConnect® blade arms

11° blade pitch

Quick-Install canopy (up to 4:12 ceiling pitch)

Triple capacitor 153mm x 10mm reversible motor

72" lead wires

MDF blade construction

Light fixture adaptable

CUL



P2500-09
Cherry blades



Natural Cherry blades



P2500-20
Classic Walnut blades



Medium Cherry blades

ENERGY INFORMATION AT HIGH SPEED

Airflow: 2,415 cubic feet per minute

Electricity Use: 49 watts (excludes lights)

Airflow Efficiency: 50 cubic feet per minute per watt

Compare: 36" to 48" ceiling fans have airflow efficiencies ranging from approximately 71 to 86 cubic feet per minute per watt at high speed.

Schoolhouse Light Kit



P2601-80 Forged Black
Indoor/outdoor. Schoolhouse opal glass. Universal style with quick-connect wiring.
Size: 8-1/2" dia., 6-3/4" ht.
Lamp: One medium base lamp, 60w max. One 13w medium base CFL included (non-dimmable).

New Bedford Light Kit



P2648-09

P2648-09 Brushed Nickel
P2648-20 Antique Bronze
Universal style with quick-connect wiring. Etched seeded glass.
Size: 16-1/2" dia., 7-1/8" ht.
Lamps: Three candelabra base lamps (included), each 60w max. 190 watt EPACKT limiter.



P2648-20

Glenmont

Aged Pewter or Venetian Bronze finish added to our popular Glenmont collection in Brushed Nickel and Polished Chrome

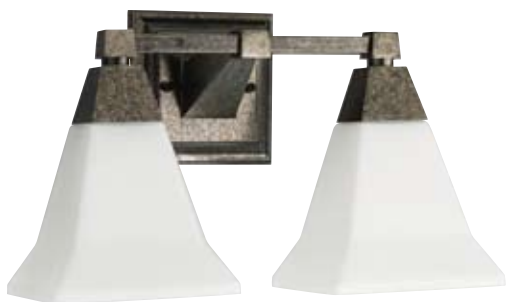
Now Matches Delta's New Dryden Collection

Damp location listed



P3135-03

P3135-74



P3136-03



P3136-74



P3137-74



P3137-03

Product No.	Finish	Description	Size	Lamp(s)
P3135-03	Aged Pewter	One-light	5-3/4" W., 8-3/4" ht.	1 medium base,
P3135-74	Venetian Bronze		Extends 7-3/4".	100w max.
P3136-03	Aged Pewter	Two-light	14-3/4" W., 8-3/4" ht.	2 medium base,
P3136-74	Venetian Bronze		Extends 7-3/4".	each 100w max.
P3137-03	Aged Pewter	Three-light	21" W., 8-1/4" ht.	3 medium base,
P3137-74	Venetian Bronze		Extends 6-1/4".	each 100w max.



P5619-20

P5619-20 Antique Bronze
One-light LED wall lantern.
Size: 8" W., 11-5/8" ht.
Extends 10-1/8", H/CTR 7-7/8".
Lamp: One 5w LED included.



P5614-20

P5614-20 Antique Bronze
One-light LED wall lantern.
Size: 6" W., 9-1/8" ht.
Extends 7-1/2", H/CTR 6-1/8".
Lamp: One 5w LED included.

clear distressed glass

Montreux LED

European country manor style with cottage-casual undertones highlights this outdoor LED lantern series.

With Antique Bronze finish and clear-distressed glass, the environmentally responsible and energy efficient lanterns are perfect for outdoor entryway, garden settings, walkways and pathways.



P5638-20

P5638-20 Antique Bronze
One-light LED wall lantern.
Size: 10" W., 14-1/8" ht.
Extends 12-3/8", H/CTR 8-1/2".
Lamp: One 15w LED included.



Antique Bronze

P5447-20 Antique Bronze
One-light LED post lantern.
Size: 10" sq., 19-1/4" ht.
Fits 3" post (order separately).
Lamp: One 15w LED included.

P5447-20

P5598-20STR



P5598-20STR Antique Bronze
One-light CFL hanging lantern
w/photocell (additional chain
available).
Size: 10" sq., 16-1/4" ht.
Overall ht. w/chain 92", wire 15'.
Lamp: One 26w CFL,
GU24 base.



Montreux CFL

CFL version features antique distressed
glass and photocell

P7314-20STR



P7314-20STR Antique Bronze
Two-light CFL close-to-ceiling
w/photocell.
Size: 10-1/2" sq., 6-5/8" ht.
Lamps: Two 13w CFL, included.
GU24 base,



P5655-20STR

P5655-20STR Antique Bronze
One-light CFL wall lantern
w/photocell.
Size: 6" W., 9-1/8" ht. Extends
7-1/2", H/CTR 6-1/8".
Lamp: One 13w CFL.
GU24 base,



P5692-20STR

P5692-20STR Antique Bronze
One-light CFL wall lantern
w/photocell.
Size: 8" W., 11-1/2" ht.
Extends 5", H/CTR 7-1/8".
Lamp: One 18w CFL.
GU24 base,



P5498-20STR

P5498-20STR Antique Bronze
One-light CFL post lantern
w/photocell.
Size: 10" sq., 19-1/4" ht.
Fits 3" post (order separately).
Lamp: One 26w CFL,
GU24 base.



P5699-20STR

P5699-20STR Antique Bronze
One-light CFL wall lantern
w/photocell.
Size: 10" W., 14-1/8" ht.
Extends 12-3/8", H/CTR 8-1/2".
Lamp: One 26w CFL,
GU24 base.



P5599-20STR

P5599-20STR Antique Bronze
One-light CFL wall lantern
w/photocell.
Size: 8" W., 11-5/8" ht.
Extends 10-1/8", H/CTR 7-7/8".
Lamp: One 26w CFL,
GU24 base.



Westport CFL

With casual, comfortable outdoor settings more popular than ever, this classic design incorporates beaded detailing in die-cast aluminum and etched seeded glass.

P5530-20STR



P5530-20STR Antique Bronze
One-light CFL hanging lantern w/photocell (additional chain available).
Size: 9" dia., 14-3/4" ht.,
Overall ht. w/chain 90", wire 15'.
Lamp: One 13w CFL, GU24 base.



P3883-20STR



P3883-20STR Antique Bronze
One-light CFL close-to-ceiling w/photocell.
Size: 9" dia., 10-1/2" ht.
Lamp: One 13w CFL, GU24 base.



P5863-20STR



P5863-20STR Antique Bronze
One-light CFL wall lantern w/photocell.
Size: 9" W., 16" ht.,
Extends 10-3/8", H/CTR 3-1/2".
Lamp: One 13w CFL, GU24 base.



P5864-20STR



P5864-20STR Antique Bronze
Two-light CFL wall lantern w/photocell.
Size: 11" W., 18-3/4" ht.,
Extends 12-7/8", H/CTR 4-5/8".
Lamps: Two 13w CFL, GU24 base.



P5862-20STR



P5862-20STR Antique Bronze
One-light CFL wall lantern w/photocell.
Size: 12" W., 30-3/4" ht.,
Extends 8-3/8", H/CTR 3-1/4".
Lamp: One 13w CFL, GU24 base.



P5434-20STR Antique Bronze
Two-light CFL post lantern w/photocell.
Size: 11" dia., 319" ht.,
Fits 3" post (order separately).
Lamps: Two 18w CFL, GU24 base.



P5434-20STR

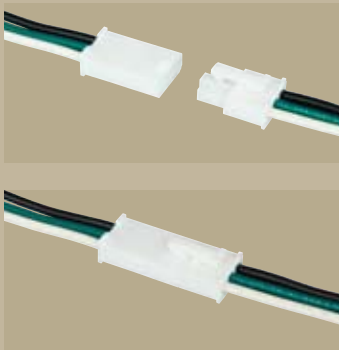


LED Recessed

EVERLUME™

LED LIGHTING

Quick-Link Trims



P8026-28QL
P8026-28QL/35K



P8026-28QL/27K White, 2700K color temp
P8026-28QL/35K White, 3500K color temp
 4" recessed LED Quick-Link trim
 Smooth open trim with integral flange
 Output: 434 lm (2700K), 517 lm (3500K)
 Dimensions: 4" ht., 5" overall dia.

P8071-28QL
P8071-28QL/35K



P8071-28QL/27K White, 2700K color temp
P8071-28QL/35K White, 3500K color temp
 6" recessed LED Quick-Link trim
 Smooth open trim with integral flange
 Output: 502 lm (2700K), 584 lm (3500K)
 Dimensions: 5" ht., 7-3/4" overall dia.

Retrofit Trims

P8026-28
P8026-28/35K



P8026-28 White, 2700K color temp
P8026-28/35K White, 3500K color temp
 4" recessed LED retrofit trim
 Smooth open trim with integral flange
 Output: 434 lm (2700K), 517 lm (3500K)
 Dimensions: 4" ht., 5" overall dia.

P8071-28
P8071-28/35K



P8071-28 White, 2700K color temp
P8071-28/35K White, 3500K color temp
 6" recessed LED retrofit trim
 Smooth open trim with integral flange
 Output: 502 lm (2700K), 584 lm (3500K)
 Dimensions: 5" ht., 7-3/4" overall dia.

Accessories

9-Gauge Chain



10 feet of 9 gauge chain permits installation of large chain-hung fixtures on high ceilings. Maximum fixture weight – 50 lbs.

- P8757-104** Polished Nickel
- P8757-114** Weathered Auburn
- P8757-124** Copper Bronze
- P8757-126** Burnished Silver
- P8757-127** Burnished Ebony

P8757-104

6 Gauge Chain



P8759-127 Burnished Ebony

10 feet of 6 gauge chain permits installation of large chain-hung fixtures on high ceilings. Maximum fixture weight – 120 lbs.

P8759-127

Mini-Pendant Stem Extension



For mini-pendants. Contains (2) 12" and (2) 15" sections.

- P8601-114** Weathered Auburn
- P8601-124** Copper Bronze

P8601-124

Socket Collar Tool – for use in installing glass shades

P8637-01 Socket collar tool
The socket collar tool was designed to provide extra leverage and eliminate a loose fit when installing glass shades. Working like a wrench, the socket collar tool extends into the shade and tightens the socket ring, securing the shade in place. This new accessory can be used on a variety of fixtures, including chandeliers, mini-pendants, sconces and wall brackets. For use on medium base lamp fixtures only.



P8637-01
Socket collar tool



Position shade over fixture



Install socket ring over shade socket collar



Hold socket collar tool by narrow end, open end facing down over socket ring



Fit bottom (open end) of socket collar tool over socket ring. Twist right until tight.



Shade secured in place.

Channel Glass

Product No.	Finish	Description	Size	Lamp(s)
P3111-30	White Glass	Two-light. K.O. for switch.	13" W., 4-1/4" ht. Extends 4-1/4".	2 medium base, each 75w max.
P3110-30	White Glass	Four-light. K.O. for switch.	24" W., 4-1/4" ht. Extends 4-3/4".	4 medium base, each 75w max.



P3110-30



P3111-30

Index

P2000	P3816	39	P5000	
P2500	P3817	39	P5028	36
P2502	P3827	6	P5101	17
P2529	P3852	35	P5108	29
P2532	P3866	39	P5133	16
P2601	P3867	39	P5135	33
P2618	P3883	46	P5155	19
P2648	P3884	12	P5167	28
P2715	P3888	12	P5175	24
P2716	P3890	25	P5434	46
P2729	P3902	10	P5447	44
P2733	P3903	11	P5498	45
P2738	P3904	11	P5514	45
P2743	P3905	20	P5530	46
P2745	P3906	34	P5598	45
P2755	P3907	33	P5599	45
P2756	P3908	16	P5614	44
P2761			P5619	44
P2762	P4000		P5638	44
P2763	P4001	34	P5655	45
P2764	P4002	34	P5692	45
P2794	P4003	32	P5699	45
P2796	P4004	32	P5862	46
P2799	P4051	36	P5863	46
P2800	P4053	33	P5864	46
	P4130	17		
P3000	P4131	14	P7000	
P3110	P4132	17	P7072	24
P3111	P4208	4	P7100	19
P3135	P4209	2	P7127	28
P3136	P4210	5		
P3137	P4365	38	P8000	
P3290	P4383	22	P8026	47
P3400	P4384	20	P8071	47
P3462	P4423	22	P8601	48
P3463	P4429	21	P8637	48
P3509	P4435	30	P8719	4
P3597	P4436	30	P8757	48
P3701	P4484	26	P8759	48
P3720	P4485	24	P8762	11
P3739	P4487	27	P8772	4
P3757				
P3795				



See Progress Lighting's full line catalog for additional fixtures.

Progress Lighting, Inc.

701 Millennium Boulevard
Greenville, SC 29607
www.progresslighting.com

1/09

