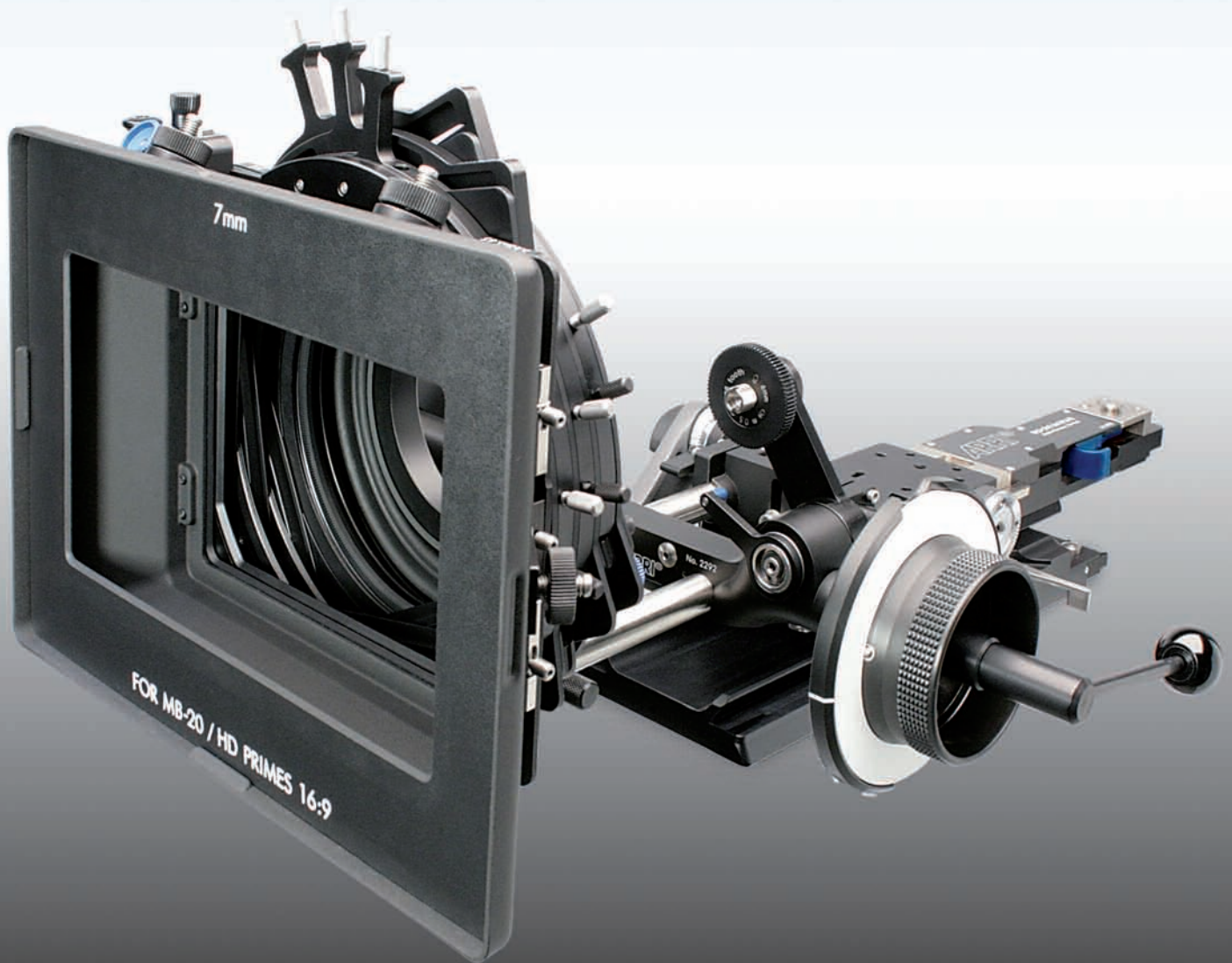
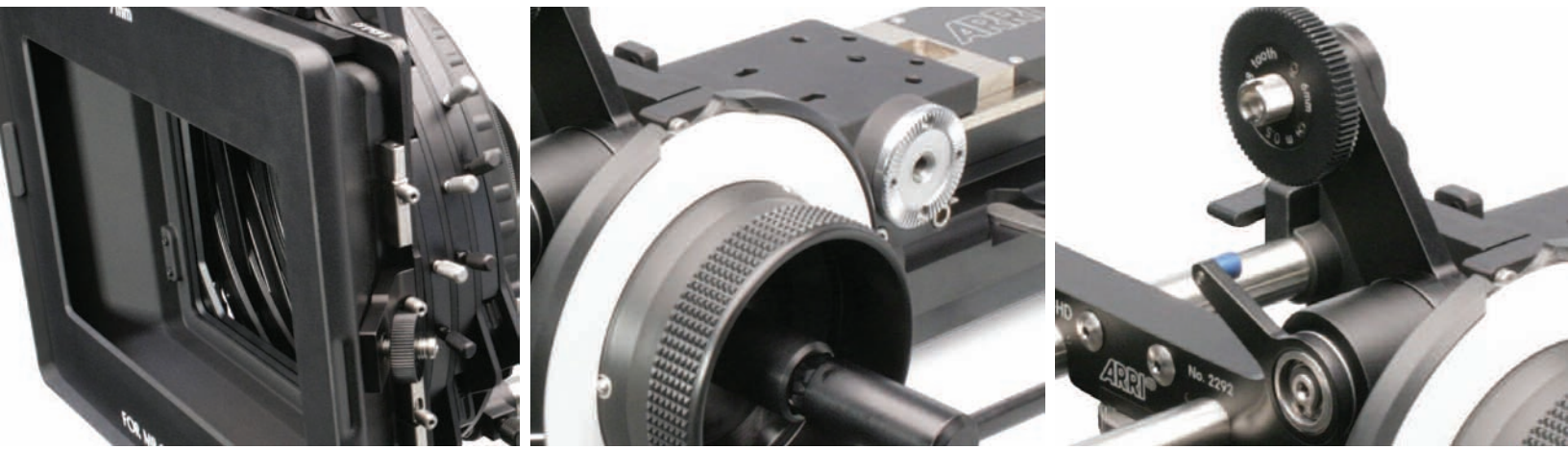


Professional Camera Accessories

ARRI Quality for Digital Applications





■ MB-20 MATTEBOX

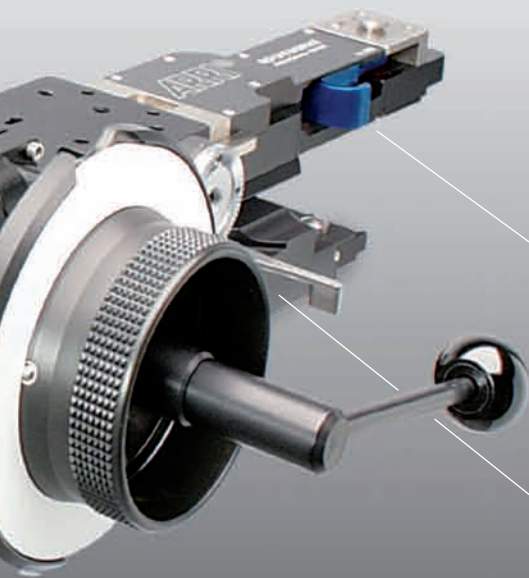
Compact precision light control
and swing-away lens access.

ARRI QUALITY

For Digital Productions

ARRI's Professional Camera Accessories bring legendary ARRI quality, reliability and support to digital cameras. These rugged, location tested Mattebox and Follow Focus Systems have features demanded by professionals around the world. Modular construction gives you the capability to work in a wide variety of production situations, while ergonomic design makes set up and operation fast and smooth.

Modern digital production requires high quality film style accessories to help capture the striking images photographed by today's creatives. Equally at home on digital or film cameras, ARRI's new Mattebox and Follow Focus Systems provide the highest quality and unprecedented flexibility. ARRI's worldwide support means that spare parts, service and technical information are always available.



■ **QR-HD1 QUICK RELEASE BASEPLATE**

Fast changes between studio and handheld set ups with rock solid support.

■ **ULB-3 UNIVERSAL LIGHTWEIGHT BRACKET**

ARRI's on board solution for handheld shooting and accessory support.

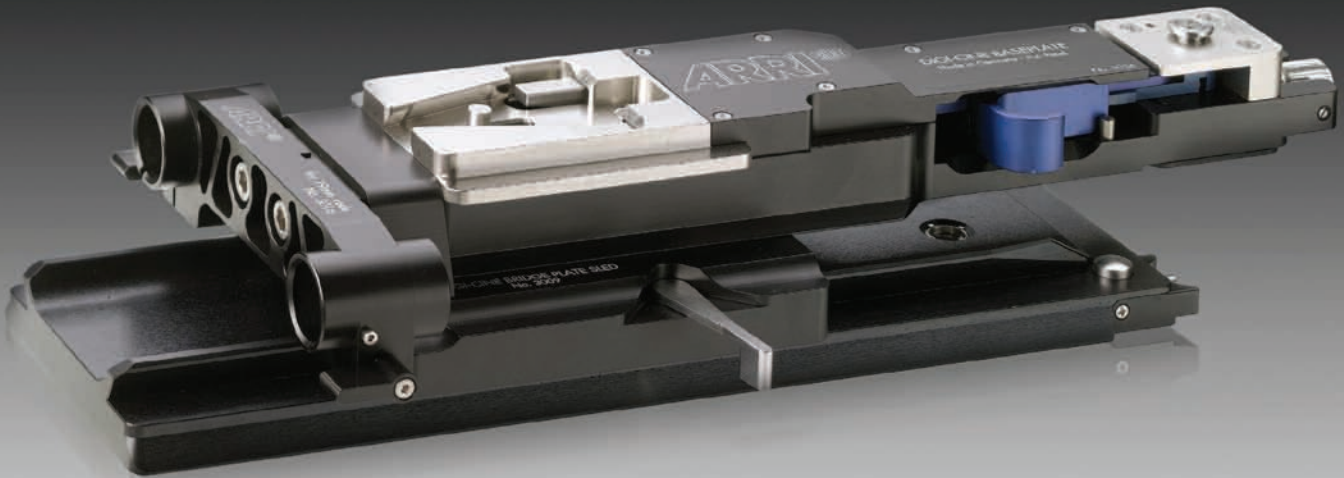
■ **FF-5HD FOLLOW FOCUS**

Modular Follow Focus System for exacting focus pulls with no backlash.



Follow Focus FF-5HD

Quick Release HD Baseplate QR-HD1



MB-20 Modular Compact Matte Box

The 5.65 x 5.65 Compact Mattebox easily adapts for use with lightweight support, bridgeplate support rods, or can be clamped on and supported by the camera lens. The swing-away Mattebox system works with wide angle lenses and provides two or three* independently rotating filter stages for filter sizes up to 5.65 x 5.65. The MB-20 system includes a unique adjustment system to ensure precise fit. Optional top, bottom, side flags and masks are available for optimal light control.

**Note: The addition of a third stage may limit wide-angle use.*

Please contact your ARRI representative for more details.



FF-5HD Follow Focus

Essential to professional quality production, ARRI's FF-5HD makes pulling focus smooth and accurate. Featuring a longer swing arm, lower gear ratio and full selection of focus gears, the FF-5HD is the best choice

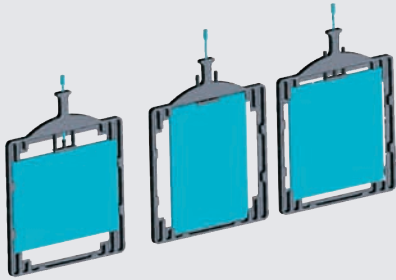
for a wide range of video lenses. It can be mounted in handheld configuration via lightweight support rods or in studio configuration using 15 mm or 19 mm bridgeplate support rods.

QR-HD1 Quick Release HD Baseplate

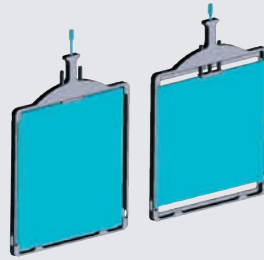
The need to change between studio and handheld configurations is a common production problem and the quick release mechanism in ARRI's QR-HD1 makes transitions fast and easy. The bridgeplate adapts to either ARRI Standard 19 mm or 15 mm rods. The Quick Release

Baseplate's unique attachment mechanism provides rock-solid camera support with a centering adjustment that compensates for variations in camera base to optical axis measurements.

COMBO I FILTER TRAY

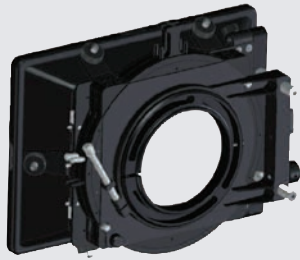


COMBO II FILTER TRAY



Filter trays for the MB-20 system are designed to be both practical and flexible. The Combo 1 filter tray holds either a 4 x 5.65 filter horizontally or vertically and also accommodates a 5 x 5 square filter. The Combo 2 filter tray holds a 5.65 x 5.65 square filter or a 5 x 6 filter. Both filter trays feature spring-loaded holders to make filter handling fast and simple.

CLAMP-ON MATTEBOX



STUDIO MATTEBOX



Production demands flexibility in a constantly changing shooting environment. The MB-20 Mattebox System can be used in a clamp-on mode for handheld or Steadicam shots, or mounted on a baseplate rod system for a traditional studio setup.

MB-20 Modular Compact Matte Box

ARRI's MB-20 System is the most flexible, compact mattebox available. The system accepts virtually all professional lenses including the Canon 4.7 x 11 and Fujinon 4.5 x 13, HD Primes, and film format prime lenses as wide as 14 mm. The locking swing-away mechanism makes lens access fast and easy.

The MB-20 System I uses a quick release removable sunshade for close-up and multiple camera work; while the MB-20 System II includes a protective cage around the sunshade for heavy duty use in demanding production environments. Both are compatible with the same support brackets, filter rings and filter trays.

MB-20 System Features

- Designed for film and digital cameras
- Works with wide angle HD zooms
- Modular construction allows all mounting options
- Offers up to three independently rotating filter stages
- Accommodates a wide range of filter sizes
- All filters can be individually rotated and locked off
- Can be equipped with top, bottom, side flags and masks
- Provides an upgrade path as wider HD lenses come to market
- Locking swing-away lens access

MB-20 SYSTEM



By adopting a functional, modular approach, the ARRI MB-20 accommodates most modern lenses and standard filter formats. Whether the script calls for a traditional studio setup, handheld move or Steadicam shot, the ARRI MB-20 system adapts to each scenario without a hitch.

MB-20 System II 16x19 Super Wide Module



The MB-20 System II 16 x 9 Super Wide Module is a sunshade, carrier and filter stage primarily intended for

use with 4 x 5.65 filters. When used in HDTV format, it is compatible with lenses as wide as 3.9 mm. The MB-20 Super Wide Module accepts MB-20 support brackets and filter rings, improving convenience and utilization for multiple camera owners.

LMB-15 Lightweight Mattebox LMB-15



The ARRI LMB-15 is the perfect choice for those requiring a lightweight clamp-on mattebox solution. The 4 x 5.65 horizontally oriented filter trays slide into heavy duty

machined guides with ease. The LMB-15 can be field configured for two or three stage capacity. The LMB-15 is compatible with LMB-5 filter trays, clamp adapter backs and carbon fiber light shields. For greater flexibility, the new 130 mm back works with clamp-on rings from the MB-20 system. The LMB-15 accepts ENG lenses as wide as 3.9 mm and has a quick release removable sunshade for close-up applications.

There is no need to compromise when focus is critical or complex. The ARRI FF-5HD follow focus system brings film style quality and precision to digital production, giving digital cinematographers the control necessary to get the shot the first time, every time.



FF-5HD Follow Focus FF-5HD

The ARRI Follow Focus FF5-HD, a completely modular film-style follow focus, is now available for digital productions. Designed specifically for lenses with a smaller diameter focus barrel, the longer swing arm ensures proper gear position on the focus ring. A lower gear ratio allows a more exacting focus pull on smaller diameter lenses or those with compressed focus scales.

The FF5-HD integral snap-on mechanism locks to 15mm lightweight support rods and can be adapted to work with ARRI Standard 15 mm or 19 mm bridgeplate support rods. ARRI Follow Focus drive gears can be attached to either side of the swing arm, allowing greater mounting flexibility.

ARRI gears are made from low friction Delrin for optimal drive smoothness and use precise self-centering stainless steel couplings to eliminate runout and wear.

For more options, the FF-5HD is compatible with all ARRI FF-4 Follow Focus accessories. Right and left focus knobs and the FF-5's longer body allow operation from either camera side with any lens. In addition, an extension is available to clear the largest matteboxes. Short and long focus whips allow the assistant to stand farther away from the camera and a focus crank makes fast snap zooms smooth and accurate.

Dual System Lens Support

For long lenses without support posts, the ARRI Dual System Lens Support attaches to 15 mm, 19 mm

or lightweight support quickly with the same snap-on adapters proven on ARRI's FF-5 Follow Focus.

DUAL SYSTEM LENS SUPPORT



QUICK RELEASE BASEPLATE



UNIVERSAL LIGHTWEIGHT BRACKET



QR-HD1 Quick Release Baseplate

The Quick Release Baseplate makes camera mounting and dismounting immediate and solid. The dedicated baseplate rod holder has a unique centering system, adjustable both vertically and horizontally. The rear clamp collar post is adjustable from 1.5 mm to 2 mm, ensuring a solid

attachment. The QR-HD1 features a mechanically locked camera base to bridgeplate attachment which can be adjusted for a perfect fit via a knurled knob on the rear of the unit. This system provides a more solid attachment than the common spring-tensioned systems.

ULB-3 Universal Lightweight Bracket

The ULB-3, specifically designed for digital cinematography, replaces the stock v-shoe attachment common on cameras such as the Sony F900, Panasonic Varicam and HDX 900.* A universal drill pattern allows direct mounting to the camera body and new dial support post attachments provide additional stability and reduce flex. This unit incorporates a right side rosette for handgrip attachment with optional left rosette for two handle operation.

As with the QR-HD1, the ULB-3 incorporates a centering adjustment system to compensate for variations in camera base to optical axis measurement.

** For compatibility with other cameras please contact your ARRI representative.*

Configuration Overview 5.65 x 5.65 MATTEBOX MB-20

NOTE ON CATALOG NUMBERS: KX.XXXXX.X FOR CUSTOMERS IN EUROPE AND ASIA 3XXXXX FOR CUSTOMERS IN NORTH AND SOUTH AMERICA

LIGHT PROTECTION



TOP FLAG K2.66019.0 338676
BOTTOM FLAG K2.66019.0 338676
SIDE FLAG (PAIR) K2.65056.0 338222



TOP FLAG K2.47740.0 338221
BOTTOM FLAG K2.47740.0 338221
SIDE FLAG (PAIR) K0.60029.0 338222



HARD MATTE SETS
2/3" VIDEO FORMAT 4:3 K2.47689.0 338296
2/3" VIDEO FORMAT 16:9 K2.47690.0 338298
35 mm FILM K2.47691.0 338300

CARRIERS & FILTER STAGES



MB-20 SYSTEM I SET FOR 15 mm LIGHTWEIGHT SUPPORT K0.60022.0 338100
SET INCLUDES:
 K2.65027.0 338200
 K2.65032.0 338210
 K2.65028.0 338204
 K2.65026.0 338202
 K2.65025.0 338212
Bellows, Light Protection and Filter Frames must be ordered separately



MB-20 SYSTEM II SET FOR 15 mm LIGHTWEIGHT SUPPORT K0.60040.0 338106
SET INCLUDES:
 K2.47738.0 338201
 K2.65032.0 338210
 K2.65028.0 338204
 K2.65026.0 338202
 K2.65025.0 338212
Bellows, Light Protection and Filter Frames must be ordered separately



4 x 4 FILTER FRAME
 K2.65098.0 333066



4 x 5.65 FILTER FRAME HORIZONTAL
 K2.65048.0 338224



4 x 5.65 FILTER FRAME VERTICAL
 K2.65049.0 338226



FILTER FRAME COMBO
4 x 5.65 / 5 x 5 K2.65023.0 338218
5.65 x 5.65 / 5 x 6 K2.65022.0 338220



FILTER FRAME COMBO
4 x 5.65 / 4 x 4 K2.65095.0 338219
5.65 x 5.65 / 4 x 5.65 VERTICAL K2.65148.0 338217

FILTER FRAMES

BASIC MODULES & ACCESSORIES



MB-20 SYSTEM I BASIC MODULE WITH SUNSHADE
 K2.65027.0 338200



2-FILTER STAGE
 K2.65026.0 338202
3-FILTER STAGE
 K2.65089.0 338203



BACK 138 mm BELLOWS ADAPTER
 K2.65028.0 338204



SWING-AWAY MODULE
 K2.65032.0 338210



CONSOLE FOR LIGHTWEIGHT SUPPORT
 K2.65025.0 338212
 (Requires swing-away module)



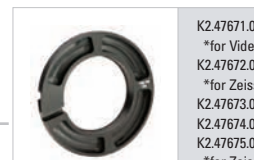
ADAPTER FOR 19 mm RODS
 K2.66039.0 338684
ADAPTER FOR 15 mm RODS
 K2.66040.0 338686



MB-20 SYSTEM II BASIC MODULE WITH SUNSHADE
 K2.47738.0 338201



CLAMP-ON ADAPTER
 K2.65030.0 338216
 (Instead of swing-away module)



RINGS FOR CLAMP-ON ADAPTER

K2.47671.0 338260 (ø 80 mm)*
 *for Video Lenses
 K2.47672.0 338258 (ø 80 mm)-HS*
 *for Zeiss Super Speed Lenses
 K2.47673.0 338262 (ø 85 mm)
 K2.47674.0 338264 (ø 86 mm)
 K2.47675.0 338266 (ø 87 mm)*
 *for Zeiss Vario Sonnar
 K2.47676.0 338268 (ø 90 mm)
 K2.47677.0 338270 (ø 92 mm)
 K2.47678.0 338272 (ø 95 mm)*
 *not for wide angle video zooms
 K2.65031.0 338206 (ø 95 mm) WA*
 *for 13 x 4.5 mm Fujinon and 11 x 4.7 mm Canon
 K2.47679.0 338276 (ø 96 mm)
 K2.47680.0 338278 (ø 98 mm)
 K2.47681.0 338280 (ø 100 mm)
 K2.47682.0 338282 (ø 104 mm)
 K2.65097.0 338248 (ø 105 mm)
 K2.47683.0 338284 (ø 110 mm)
 K2.47684.0 338286 (ø 114 mm)
 K2.47685.0 338288 (ø 117 mm)
 K2.47686.0 338290 (ø 120 mm)
 K2.47687.0 338292 (ø 128 mm)*
 *not for Fujinon HAe 3 x 5
 K2.47688.0 338294 (ø 128 mm) WA*
 *for Fujinon HAe 3 x 5



STUDIO CONSOLE FOR 19 mm RODS K2.55031.0 338207
FOR 15 mm RODS K2.55032.0 338208
 NOTE: Use Studio Consoles if lens front diameter exceeds 157 mm. Not compatible with lightweight support.

Technical Data subject to change without notice.

NOTE ON CATALOG NUMBERS: KX.XXXXX.X FOR CUSTOMERS IN EUROPE AND ASIA 3XXXXX FOR CUSTOMERS IN NORTH AND SOUTH AMERICA

138 mm FILTER RINGS



REDUCTION RING REDUCES TO 4 1/2"
K2.47115.0 338668



138mm FILTER RING
K2.47222.0 333060 (ø 100 mm)-Z



FILM CONNECTION RING
K2.47225.0 333063 (ø 87 mm)-B2
FILM CONNECTION RING
K2.47224.0 333062 (ø 95 mm)-C



ADAPTER RING 114-100
WITH THREAD FIR VA 80, 85,
86, 90, 92, 95
K2.65046.0 338246
(ø 100 mm)-VB100



138mm FILTER RING
K2.47190.0 338568 (ø 114 mm)-H



FILM CONNECTION RING
K2.52195.0 711306 (ø 104 mm)-V
FILM CONNECTION RING
K2.65045.0 338242 (ø 110 mm)-W



LARGE DIAMETER WIDE-ANGLE LIGHT TRAP
(not for clamp-on ring) reducing bellows diameter
from 138 mm to listed below
K2.65069.0 338250 (ø 117 mm)
K2.65070.0 338252 (ø 120 mm)
K2.65123.0 338251 (ø 121 mm)
K2.65071.0 338253 (ø 128 mm)
*not for Fujinon 3 x 5 HAe Super Zoom
K2.65090.0 338254 (ø 128 mm)
*for Fujinon 3 x 5 HAe Super Zoom
K2.65072.0 338984 (ø 130 mm)
K2.65073.0 338256 (ø 132 mm)

CONNECTION RINGS

VIDEO CONNECTION RINGS



CONNECTION RING 100-80
K2.65043.0 338236
(ø 80 mm)-VA80



CONNECTION RING 100-85
K2.65038.0 338230
(ø 85 mm)-VA85



CONNECTION RING 100-86
K2.65039.0 338232
(ø 86 mm)-VA86



CONNECTION RING 100-90
K2.65040.0 338234
(ø 90 mm)-VA90



CONNECTION RING 100-92
K2.65054.0 338238
(ø 92 mm)-VA92



CONNECTION RING 100-95
K2.65029.0 338228 (ø 95 mm)-VA95
NOTE: Only for wide angle lenses with
cutouts (4.9 mm and below). For lenses
larger than 4.9 mm use K2.47224.0-C



CONNECTION RING 114-96
K2.65055.0 338244
(ø 96 mm)-VA96



CONNECTION RING 114-98
K2.65044.0 338240
(ø 98 mm)-VA98



ADAPTER RING 114-100
K2.65046.0 338246 (ø 100 mm)-VA100
with thread to connect following connection
rings: VA 80, 85, 86, 90, 92, 95 + 100 mm Film
Connection Rings (B2, C, etc.)



CONNECTION RING 114-105
K2.65096.0 338247
(ø 105 mm)-VA105



CONNECTION RING 114-110
K2.65045.0 338242
(ø 110 mm)-VA110

4 1/2" FILTER RINGS



4 1/2" (114 mm) FILTER RING
K2.49109.0 333064 (ø 87 mm)-R



CONNECTION RING 100-80
K2.47226.0 333065
(ø 80 mm)-S



4 1/2" (114 mm) FILTER RING
K2.52205.0 711312 (ø 114 mm)-U



CONNECTION RING
K2.52195.0 711306 (ø 104 mm)-V
CONNECTION RING
K2.65045.0 338242 (ø 110 mm)-W



4 1/2" (114 mm) FILTER RING
K2.32903.0 339039 (ø 125 mm)-X



REFLEX PREVENTION RING
K2.32911.0 339039 (ø 125 mm)-Y

ø = diameter of connection ring to lens

Configuration Overview LIGHTWEIGHT MATTEBOX LMB-15

NOTE ON CATALOG NUMBERS: KX.XXXXX.X FOR CUSTOMERS IN EUROPE AND ASIA 3XXXXX FOR CUSTOMERS IN NORTH AND SOUTH AMERICA

LMB-15 FOR 4 x 5.65 AND 4 x 4 FILTERS



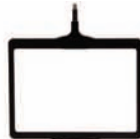
SET-LMB-15 K0.60047.0 333970
INCLUDING
-1x BASIC MODULE, K2.66012.0 333980
-1x 3-FILTER STAGE, K2.66013.0 333981
-1x 2-FILTER STAGE, K2.66014.0 333982
-3x FILTER FRAME 4 x 5.65, K2.47669.0 338688
-1x LIGHTSHIELD, K2.47244.0 333940

SET-LMB-15 TWO STAGE K0.60048.0 333972
INCLUDING
-1x BASIC MODULE, K2.66012.0 333980
-1x 2-FILTER STAGE, K2.66014.0 333982
-2x FILTER FRAME 4 x 5.65, K2.47669.0 338688
-1x LIGHTSHIELD, K2.47244.0 333940

SET-LMB-15 THREE STAGE K0.60049.0 333974
INCLUDING
-1x BASIC MODULE, K2.66012.0 333980
-1x 3-FILTER STAGE, K2.66013.0 333981
-3x FILTER FRAME 4 x 5.65, K2.47669.0 338688
-1x LIGHTSHIELD, K2.47244.0 333940



LIGHT SHIELD FOR LMB-5/LMB-15
K2.47244.0 333940



4 x 5.65 FILTER FRAME SPARE
K2.47669.0 338688



4 x 4 FILTER FRAME
K2.47104.0 338680



SET OF MASKS FOR LMB-15
K2.66021.0 333987 HD 16 x 9 / SUPER 16
K2.66022.0 333989 35 mm

LMB-5 FOR 4 x 5.65 AND 4 x 4 FILTERS



LMB-5 LIGHTWEIGHT MATTEBOX SET 1 K0.60032.0 333930
INCLUDING
-1x K2.47670.0 333929 (MATTEBOX)
-2x K2.47669.0 338688
(4 x 5.65 FILTER FRAME)

LMB-5 LIGHTWEIGHT MATTEBOX SET 2 K0.60032.A 333931
INCLUDING
-1x K2.47670.0 333929 (MATTEBOX)
-2x K2.47104.0 338680
(4 x 4 FILTER FRAME)
Clamp adapters and rings must be ordered separately.



LMB-15 TECHNICAL DATA
MIN FOCAL LENGTH ENG LENSES: 3.9 mm
MIN FOCAL LENGTH 16 mm LENSES: 6 mm
MIN FOCAL LENGTH 35 mm LENSES: 14 mm (TO 180 mm)
MAX NUMBER OF 4 x 5.65 FILTERS: 3 FILTERS

LMB-15 ADVANCED FEATURES (COMPARED TO LMB-5)
+ WORKS WITH WIDE ANGLE ENG LENSES DOWN TO 3.9 mm
+ QUICK RELEASE SUNSHADE FOR CLOSE UPS
+ OPTIONAL 2 OR 3 FILTER CAPACITY
+ OPTIONAL BOTTOM FLAG



CLAMP ADAPTER
K2.65103.0 333985
(ø 130 mm)



CLAMP ADAPTER
K2.47243.0 333932
(ø 80 mm)-A



CLAMP ADAPTER
K2.47242.0 333934
(ø 87 mm)-B



CLAMP ADAPTER
K2.47241.0 333936
(ø 95 mm)-C



CLAMP ADAPTER
K2.47253.0 711302
(ø 104 mm)-I



CLAMP ADAPTER
K2.52097.0 711303
(ø 110 mm)



CLAMP ADAPTER
K2.47240.0 333938
(ø 114 mm)-D



RINGS FOR CLAMP-ON ADAPTER

K2.47671.0 338260 (ø 80 mm)*
*for Video Lenses

K2.47672.0 338258 (ø 80 mm)-HS*
*for Zeiss Super Speed Lenses

K2.47673.0 338262 (ø 85 mm)

K2.47674.0 338264 (ø 86 mm)

K2.47675.0 338266 (ø 87 mm)*
*for Zeiss Vario Sonnar

K2.47676.0 338268 (ø 90 mm)

K2.47677.0 338270 (ø 92 mm)

K2.47678.0 338272 (ø 95 mm)*
*not for wide angle video zooms

K2.65031.0 338206 (ø 95 mm) WA*
*for 13 x 4.5 mm Fujinon and 11 x 4.7 mm Canon

K2.47679.0 338276 (ø 96 mm)

K2.47680.0 338278 (ø 98 mm)

K2.47681.0 338280 (ø 100 mm)

K2.47682.0 338282 (ø 104 mm)

K2.65097.0 338248 (ø 105 mm)

K2.47683.0 338284 (ø 110 mm)

K2.47684.0 338286 (ø 114 mm)

K2.47685.0 338288 (ø 117 mm)

K2.47686.0 338290 (ø 120 mm)

K2.47687.0 338292 (ø 128 mm)*
*not for Fujinon HAe 3 x 5

K2.47688.0 338294 (ø 128 mm) WA*
*for Fujinon HAe 3 x 5

ø = diameter of connection ring to lens



LMB-5 TECHNICAL DATA
MIN FOCAL LENGTH ENG LENSES: 6 mm
MIN FOCAL LENGTH 16 mm LENSES: 6 mm
MIN FOCAL LENGTH 35 mm LENSES: 14 mm (TO 180 mm)
MAX NUMBER OF 4 x 5.65 FILTERS: 2 FILTERS

Technical Data subject to change without notice.

Configuration Overview FOLLOW FOCUS FF-4 AND FF-5HD

NOTE ON CATALOG NUMBERS: KX.XXXXX.X FOR CUSTOMERS IN EUROPE AND ASIA 3XXXXX FOR CUSTOMERS IN NORTH AND SOUTH AMERICA

FOLLOW FOCUS FF-4

FOLLOW FOCUS FF-5 HD



RIGHT FOCUS KNOB
K2.47215.0 381442



FOLLOW FOCUS DEVICE FF-4
(INCLUDES LEFT FOCUS KNOB + MARKING DISK)
K2.47121.0 381440



GEARS SEE BELOW



FOLLOW FOCUS DEVICE FF-5
(INCLUDES LEFT FOCUS KNOB + MARKING DISK)
K2.47637.0 381550



LEFT FOCUS KNOB
K4.47589.0 381443
MARKING DISK FLAT
K4.32713.0 381150



ADAPTER BA-2 FOR 19 mm RODS
K2.43268.0 381411



ADAPTER BA-3 FOR 15 mm RODS
K4.47598.0 381412



ADAPTER FOR BRIDGEPLATE 19 mm RODS
K2.47629.0 381560



ADAPTER FOR BRIDGEPLATE 15 mm RODS
K2.47630.0 381562

ACCESSORIES FOR FOLLOW FOCUS DEVICES



FOCUS LEVER K2.32730.0 380140




FLEXIBLE SHAFT, SHORT 11.8" (300 mm) K2.34100.0 381130




FLEXIBLE SHAFT, LONG 35.4" (900 mm) K2.32731.0 380130


ACCESSORIES FOR FF-4/5 HD




EXTENSION FOR FOCUS KNOB K2.32985.0 381120



COUPLING FOR FLEXIBLE SHAFT K2.47235.0 381444




MARKING DISK, FLAT
K4.32713.0 381150
(FOR FF-3, FF-4, FF5-HD)




MARKING DISK, BEVELLED
K2.47248.0 381450
(FOR FF-3, FF-4, FF5-HD)


GEARS FOR ALL LISTED FOLLOW FOCUS DEVICES




0.8 MODULE
TEETH: 35
MODULE GEAR FOR SMALLER PRIME LENSES AND 16 mm ZOOMS
K2.47252.0 381468



0.8 MODULE
TEETH: 43
MODULE GEAR FOR LARGER PRIME LENSES AND 35 mm ZOOMS
K2.47002.0 381574




0.8 MODULE TEETH: 64
MODULE GEAR FOR LARGER PRIME LENSES OR FOR HIGHER TRANSMISSION RATIO ON FF-5 WITH LARGER LENSES
K2.65102.0 381576




0.8 MODULE
TEETH: 35
GEAR FOR LENSES WITH AXIAL MOVEMENT OF FOCUS RING
K2.47557.0 381180

FOLLOW FOCUS			FF-4	FF-5HD
			TRANSMISSION RATIO I=	
			1,84	1,00
GEAR	MODULE	TEETH	DRIVEN TEETH PER HANDWHEEL REVOLUTION	
K2.47252.0	Cine 0,8	35	64,47	35,00
K2.47002.0	Cine 0,8	43	79,21	43,00
K2.65102.0	Cine 0,8	64	117,89	64,00
K2.47631.0	Video 0,5	75	138,16	75,00
K2.47632.0	Video 0,6	64	117,89	64,00



0.5 MODULE
TEETH: 75
FOCUS GEAR 0.5 MODULE FOR CANON ENG/EFP LENSES
K2.47631.0 381570



0.6 MODULE
TEETH: 64
FOCUS GEAR 0.6 MODULE FOR FUJINON ENG/EFP LENSES
K2.47632.0 381572

FF-5 WITH LARGE GEAR K2.65102.0 APPROXIMATES FF-4 WITH STANDARD GEAR K2.47252.0

Technical Data subject to change without notice.

Configuration Overview SUPPORT ACCESSORIES

NOTE ON CATALOG NUMBERS: KX.XXXXX.X FOR CUSTOMERS IN EUROPE AND ASIA 3XXXXX FOR CUSTOMERS IN NORTH AND SOUTH AMERICA

QUICK RELEASE BASEPLATE

QUICK RELEASE BASEPLATE

- Quick switch from tripod to handheld for digital cameras
- Compatible with ARRI Studio System
- Unique centering adjustment allows perfect fit with many digital cameras



SET QUICK RELEASE BASEPLATE 19 mm RODS K0.60058.0 338351 *
SET QUICK RELEASE BASEPLATE 15 mm RODS K0.60059.0 338353 *
 *Includes pair 440 mm rods



QUICK RELEASE BASEPLATE K2.47796.0 338355



BRIDGEPLATE SLED K2.47797.0 338356
SUPPORT ROD HOLDER 19 mm K2.47798.0 338357
SUPPORT ROD HOLDER 15 mm K2.47799.0 338358
12" BASEPLATE K4.54362.0 **18" BASEPLATE** 339866

19 mm SUPPORT RODS



17.3" (440 mm) K5.42904.0 339083



13.4" (340 mm) K4.47347.0 339082



9.4" (240 mm) K2.43046.0 339801



LIGHTWEIGHT ROD SET 7.3" K2.55024.0 200734



LIGHTWEIGHT ROD SET 6.5" K2.55023.0 200733

DUAL SYSTEM LENS SUPPORT

DUAL SYSTEM LENS SUPPORT

- Bridge for lightweight rods and clamping ring to support heavy lenses
- Snap-on mechanism allows quick change
- Compatible with FF-5HD adapter bridge for mounting to 15 mm and 19 mm studio rods
- Clamp rings available for video and film lenses

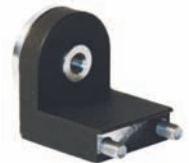


CLAMP RING FOR FUJINON STYLE LENSES K2.47801.0 338371
CLAMP RING FOR CANON CINE STYLE LENSES K2.47803.0 338373
LWS SUPPORT BRIDGE K2.47800.0 338370

UNIVERSAL LIGHTWEIGHT BRACKET ULB-3



UNIVERSAL LIGHTWEIGHT BRACKET ULB-3 SET
 K2.47650.0 338995



LEFT HANDGRIP ROSETTE
 K2.47639.0 338999

15 mm SUPPORT RODS



17.3" (440 mm) K5.21957.0 339089



13.4" (340 mm) K4.47348.0 339081



9.4" (240 mm) K2.21958.0 339087

15 mm SUPPORT RODS WITH THREADS FOR LWS-3/4 (PAIR)

0.2" K2.47111.0 339011, **1"** K2.47112.0 339012

0.5" K2.47114.0 339014, **5"** K2.47113.0 339013

LENS SUPPORTS



LENS SUPPORT LS-9 FOR 19 mm RODS
 K2.47227.0 339870



LENS SUPPORT LS-10 FOR 15 mm RODS
 K2.47228.0 339872

LENS DIAMETER TABLE

CINE LENSES	
FOCAL LENGTH	LENS FRONT DIAMETER
ARRI/ZEISS MASTER PRIME	
All Master Primes	ø114
ARRI/ZEISS LDS ULTRA PRIME	
12 mm	ø156
14 mm	ø114
Primes 16-180 mm	ø104
ARRI/ZEISS ULTRA PRIME	
8 mm	ø134
10 mm	ø156
12 mm	ø156
14 mm	ø114
Primes 16-135 mm	ø95
180 mm	ø114
ARRI/ZEISS STANDARD SPEED (T2.1)	
10 mm	ø156
12 mm	ø135
14 mm	ø114
Primes 16-180 mm	ø80
300 mm	ø125
ARRI/ZEISS ZOOM	
10-100 mm	ø87
11-110 mm	ø87
VP 1, 2, 3	ø150
ARRI SHIFT & TILT*	
18 mm	ø95
Primes 20-150 mm	ø87
ARRI/ZEISS SUPER SPEED	
All Lenses	ø80
ARRI/ZEISS ULTRA 16	
All Lenses	ø95
ARRI MACROS	
All Lenses	ø80
ANGENIEUX	
HR 7-81 mm	ø100
11.5-138 mm	ø114
17-102 mm	ø144
HP 25-250 mm	ø110
HR 25-250 mm	ø136
CANON	
7-56 mm	ø95
8-64 mm	ø95
11-165 mm	ø95
11.5-138 mm	ø95
17-35 mm	ø95
COOKE S4i	
12 mm	ø156
14 mm	ø110
Primes 16-135 mm	ø110
150 mm	ø125
COOKE ZOOM	
10-30 mm	ø121
10.4-52 mm	ø125
18-100 mm	ø150
20-100 mm	ø144
20-250 mm	ø124
MK2 25-250 mm	ø121
T3.7 25-250 mm	ø150
VANTAGE/HAWK	
10-24 mm	ø156
150-450 mm	ø156
17-35 mm	ø110
Primes 15-180 mm	ø110

* Shift and Tilt range limited by Matte Box.

ARRI Inc.

617 Route 303 Blauvelt NY, 10913-1109
Tel.+1(845)353-1400 Fax+1(845)425-1250
www.arri.com

ARRI Inc.

600 N. Victory Blvd. Burbank CA, 91502-1639
Tel.+1(818)841-7070 Fax+1(818)848-4028
www.arri.com

ARRI Inc.

2385 Stirling Road Ft. Lauderdale FL, 33312-6608
Tel.+1(954)322-4545 Fax+1(954)322-4188
www.arri.com

ARRI Canada LTD.

415 Horner Avenue, Unit 11 Etobicoke, Ontario M8W 4W3,
Canada
Tel.+1(416)255-3335 Fax+1(416)255-3399
www.arrican.com