

Progress through Versatility. Liebherr Demolition Excavators.



LIEBHERR



Maximum economy on every project.

Whether it's an old building or a motorway bridge, whether it's a factory hall or a water tower, when it comes to demolition it's the equipment that determines how economical the job is going to be.

1 The perfect solution for every application.

Demolition excavators from Liebherr offer a versatility that provides ultimate performance – and that means on every project.

Innovative solutions, excellent technical design, and components with long service lives mean that the carefully classified range of types guarantees the best possible results, in every sector of selective deconstruction.

2 Flexibility from the system specialists.

Liebherr hydraulic excavators have a wide range of accessories and add-on tools all ready to be fitted. This means

that the most widely differing situations can always be covered with the ideal combination. All these components and variants are developed and manufactured exclusively by Liebherr: Perfection, all from one source.

3 Safety means success.

With demolition excavators from Liebherr, safety means economy too.

The best possible stability characteristics, steady operating performance, and excellent ergonomic design all add up to an absolute advantage when it comes to operational quality and value – plain and simple.





The perfect solution for every application.

1 Liebherr demolition excavators set new standards for efficiency and economy in the sector, and the focus is absolutely on versatility. No matter how varied the circumstances may turn out be, the wide range of models and the wide range of equipment to go with them mean the ideal combination for every situation is easy to find. With the R 934 C, R 944 C, R 954 C, R 974 C, and R 984 C, the right hydraulic excavator can be provided for every size of building and every type of task.

The unique range of extensions, booms, intermediate elements, and demolition stick units mean best possible performance in every phase of work. Another strength of the Liebherr attachment concept is the flexibility in operation. An attachment change can be executed extremely rapidly and without much effort, which means that the same unit can take on demolition work as well load demolition rubble.

Powerful design

The stable slewing uppercarriage with continuous box beams provide the excavator with an extremely strong backbone, and provides for optimum conducting of the power flow from the unit. This creates a double advantage for the equipment fittings and steel superstructure: High operational reliability and long service life.

Top quality for top performance

The projects may change, but the level of performance stays at the maximum. That's guaranteed by the superb quality of each individual component, quality that makes Liebherr demolition excavators famous the whole world over. Their robust construction, designed to withstand the most extreme conditions, means permanent availability and permanent profitability during tough demolition operations. Components such as the undercarriage, slewing platform, bearings, bolts, and equipment fittings, are all planned and prepared to withstand extreme stresses and demands over long periods of time with no problem at all. That makes a Liebherr excavator an investment that will pay for itself many, many times over. And the versatile Liebherr range provides the ideal solution every time, whatever the task may be.

Our experience - your capital advantage

With more than 50 years of experience in design, construction, operations, and service with demolition excavators, Liebherr can provide you with complete expertise in every situation relating to demolition and selective deconstruction. As a Liebherr customer, you have all this know-how at your disposal, and at any time. Our aim is clear – together with you, we'll find the most economical and most successful way to achieve your goals, whatever they may be.



Flexibility from the system specialists.

2

The wide range of equipment fittings for Liebherr demolition excavators means complete versatility, and all from one source. The selection extends from demolition with the intention of recycling, through material separation, and up to loading of all kinds. All booms and standard add-on parts are manufactured exclusively by Liebherr, and are perfectly matched to one another, right down to the last detail. Thanks to the carefully tailored combination of a basic machine unit and attachment, a total system can be created which provides optimum use with ideal performance and handling qualities. And that is precisely why you can rely on Liebherr in every situation and with every equipment combination; for speed, reliability, and productivity.

Performance made to measure.

The Liebherr modular system, with different boom lengths and shapes, different bucket stick lengths, and the wide range of versatile operating equipment elements and add-ons all make it possible to bring together a unit which precisely meets the specific demands.

Long live quality.

Thanks to high strength sheet steel and tough cast steel components at all connection points of the attachment components, every piece of the machine will stand up to the hardest conditions, for a long, long time. Long live quality – that's something to cheer about!

Speed saves time and costs.

One particular advantage of the Liebherr concept is that the basic machine, the equipment elements, and the working tools can be assembled and disassembled with minimal effort. This leads to a clear reduction in times and costs in comparison with other systems. Depending on the frequency of the equipment change, Liebherr offers two different interface variants between the basic machine and the operating equipment: There is the mechanically detachable interface making use of expander bolts, and the hydraulic locking and unlocking of the bolts in a way similar to the Liebherr quick-coupling system.

The high-pressure lines between the basic boom and the boom are connected by quick-action couplings. Low-pressure and lubrication lines are gathered together in the Multifast locking system, and can be released or connected by means of a handle. As an option, there is also a multi-coupling system available for high-pressure lines, which again allows for enormous time savings in comparison with quick-couplings when changing equipment elements

In order to make a rapid change to the operating equipment element required in each case, these units are held ready on site in appropriate storage devices.

The Liebherr quick changer with the positive-fit connection system provides a major time advantage when tools need to be changed frequently. And in order to save even more time when it comes to tool changes, Liebherr can also offer the innovative hydraulic coupling system Likufix to connect up the hydraulic lines.



Safety – The key to success.

3

Safety for the driver and safety for the excavator on demolition projects has top priority. This is why all Liebherr demolition excavators are provided with a highly developed safety concept, which integrates passive and active components, such as the automatic reach limitation system, and at the same time perceptibly increases the operational value of the machine.

Safety thanks to top ergonomic standards.

Liebherr demolition excavators provide the operator with the ideal conditions for relaxed, fatigue-free, and effective working. The special demolition cab is designed in accordance with the very latest ergonomic technology and equipped with comfortable fixtures and fittings to match. This means the driver can concentrate properly and provide his best performance for hours on end.

- The generously-dimensioned armoured glass in the front and roof windows provides an excellent view of the working area and the surroundings, and the high-strength stone impact protection adds extra safety.
- The easy overview monitor display allows the driver to keep an eye on all important operating status parameters, all the time.
- The design and arrangement of the seat, control system, and display is perfectly matched to each other in an overall ergonomic concept. The cab is also equipped with full climate control.
- The driver's seat is vibration-damped, and can be adjusted to suit the driver's individual requirements. An air-suspension seat is also available as an option.
- Always the best outlook: As an option, Liebherr demolition cabs can also be tilted by 30°

Liebherr Demolition Control System LDC.

These active safety components, ergonomically arranged in the driver's field of view, provide details in real time of the tool position and the standing inclination of the machine. If a critical measured value is exceeded, the LDC automatically activates the electronic reach limitation system. When the reach limit is arrived at, the system ensures that no further movements of the equipment elements are possible which might reduce the stability of the excavator.









Maximum stability.

Depending on the size of the machine, a range of different undercarriage variants are available, rigid or mechanically or hydraulically adjustable. These rugged, large dimensioned undercarriages have a large standing surface to ensure optimum stability, letting the driver work in peace and with precision. This eases the stress not only on the running gear components but on the machine as a whole. Even on uneven ground, the excavator stands safe and sure in every situation.

Compact for relocation.

For rapid and problem-free transport, the mechanically or hydraulically adjustable undercarriages of Liebherr demolition excavators can be reduced to an outer width which makes transport simpler and even more convenient.

Turning instead of maneuvering.

As a particular performance feature, Liebherr demolition excavators provide a 360° action radius with absolute stability and consistent reach. This makes for definite time advantages if demolition material needs to be removed from the work area, or a tool change is to be carried out.

Liebherr Demolition Excavators

Hydraulic quick coupling system

for booms, for rapid change of the working equipment elements (optional, not for R 974 C)



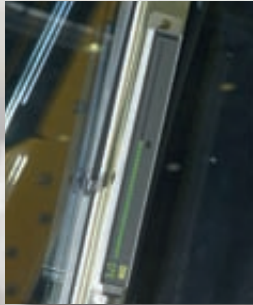
Piston rod protection for boom cylinders

helps to prevent damage to the cylinders (optionally available from R 954 C)



LDC Display

to display the reach limitation in the cab, for maximum safety during demolition work.



Integral protection grille

in two variants for maximum operator safety (optional)



Demolition cab; 30° tiltable

for an excellent view of the working area and fatigue-free working (optional)



VD-HD undercarriage

Hydraulically-adjustable undercarriage for optimum stability when working and reduced width for transport (optional)



Folding access steps

for easy access with low transport width (VH-HD undercarriages only)



Track guide

prevents the track from sliding off when forces are exerted transverse to the direction of travel and simultaneous travel (optionally available in a number of variants)



- an Overview.



Piston rod protection for tilting cylinder
prevents damage to the cylinder

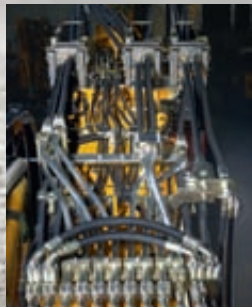


One of three LDC sensors on the attachment
for permanent monitoring of the equipment position



Likufix
for rapid change of the add-on tools (optional)

Multi-coupling system for high-pressure lines
for very rapid change of operational equipment elements within 15 minutes (optional)



Quick release fastenings for high-pressure lines and Multifast locking system
for low-pressure lines, for easy change of operating equipment



Ballast weight can be hydraulically lowered
for lowering the weight during transport



Superstructure protection
prevents damage to the superstructure



Range of Versatility.

Characteristic Data and Demolition Equipment Combinations

R 934 C Litronic

Engine capacity	150 kW / 203 hp	
Undercarriage variant	S-HD	VH-HD hydraulically adjustable
Track gauge	2400 mm	2300 - 3200 mm
Reach height at stick end	19.5 m	19.5 m
Tool weight at stick end with reach up to	8.00 m	2.0 t
Demolition boom	7.50 m	•
Intermediate boom	2.10 m	•
Demolition stick	5.20 m	•
Operating weight	approx. 42.5 t	approx. 47.5 t

R 944 C Litronic

Engine capacity	150 kW / 203 hp	
Undercarriage variant	HD-SL	
Track gauge	2600 mm	
Reach height at stick end	21.0 m	
Tool weight at stick end with reach up to	10.00 m	2.0 t
Demolition boom	7.30 m	•
Demolition boom	9.30 m	—
Intermediate boom	2.25 m	•
Demolition stick	6.30 m	•
Operating weight	approx. 48.5 t	

R 954 C Litronic

Engine capacity	150 kW / 203 hp				
Undercarriage variant	HD	V mechanically adjustable	S-HD	HD-EW	V-HDW mechanically adjustable
Track gauge	2900 mm	2400 - 2900 mm	2900 mm	3650 mm	2900 - 3400 mm
Reach height at stick end	25.6 m	25.6 m	25.6 m	25.6 m	25.6 m
Tool weight at stick end with reach up to	12.00 m	2.5 t	2.75 t	3.0 t	3.0 t
Demolition boom	8.80 m	•	•	•	•
Demolition boom	11.30 m	—	—	—	—
Intermediate boom	2.50 m	•	•	•	•
Demolition stick	8.55 m	•	•	•	•
Operating weight	approx. 60.5 t	approx. 63.5 t	approx. 65.5 t	approx. 69 t	approx. 72 t

R 954 C Litronic 34 m

Engine capacity	240 kW / 326 hp	
Undercarriage variant	VH-HDW hydraulically adjustable	
Track gauge	2850 - 3850 mm	
Reach height at stick end	34.0 m	
Tool weight at stick end with reach up to	14.00 m	3.0 t
Demolition boom	14.50 m	•
Intermediate boom	2.50 m	•
Demolition stick	11.00 m	•
Operating weight	approx. 85.5 t	

R 974 C Litronic

Engine capacity	400 kW / 543 hp	
Undercarriage variant	HD-EW	VH-HD hydraulically adjustable
Track gauge	4588 mm	3400 - 4700 mm
Reach height at stick end	41.0 m	41.0 m
Tool weight at stick end with reach up to	18.00 m	3.0 t
Demolition boom	17.00 m	•
Intermediate boom	2.70 m	•
Demolition stick	13.50 m	•
Operating weight	approx. 127 t	approx. 131.5 t

The useful loads on the stick apply to a slewing range of 360°, including quick coupling system, attachment plate, and add-on tool or special attachment.

190 kW / 258 hp					
S-HD	V mechanically adjustable	VH-HD hydraulically adjustable	S-HD	V mechanically adjustable	VH-HD hydraulically adjustable
2900 mm	2400 - 2900 mm	2380 - 3300 mm	2900 mm	2400 - 2900 mm	2380 - 3330 mm
21.0 m	21.0 m	21.0 m	23.0 m	23.0 m	23.0 m
2.5 t	2.75 t	3.0 t	2.25 t	2.5 t	3.0 t
•	•	•	—	—	—
—	—	—	•	•	•
•	•	•	•	•	•
•	•	•	•	•	•
approx. 52 t	approx. 55 t	approx. 58.5 t	approx. 53 t	approx. 56 t	approx. 59.5 t

240 kW / 326 hp					
VH-HD hydraulically adjustable	V mechanically adjustable	S-HD	HD-EW	V-HDW mechanically adjustable	VH-HD hydraulically adjustable
2380 - 3330 mm	2400 - 2900 mm	2900 mm	3650 mm	2900 - 3400 mm	2380 - 3330 mm
25.6 m	28.0 m	28.0 m	28.0 m	28.0 m	28.0 m
3.0 t	2.25 t	2.25 t	3.0 t	3.0 t	3.0 t
•	—	—	—	—	—
—	•	•	•	•	•
•	•	•	•	•	•
•	•	•	•	•	•
approx. 74.5 t	approx. 64.5 t	approx. 66.5 t	approx. 69.9 t	approx. 73.1 t	approx. 75.6 t

R 984 C Litronic *

Engine capacity	504 kW / 685 hp	
Undercarriage variant	VH-HDW hydraulically adjustable	
Track gauge	2850 - 3850 mm	
Reach height at stick end	37.0 - 65 m	
Tool weight at stick end with reach up to	37.00 m	6.0 t
Tool weight at stick end with reach up to	65.00 m	2.5 t
Operating weight	approx. 220 t	

* Details at request



Liebherr-France SAS

2, avenue Joseph Rey, B.P. 90287, F-68005 Colmar Cedex
☎ +33 389 21 30 30, Fax +33 389 21 37 93
www.liebherr.com, E-Mail: info.lfr@liebherr.com