

Project Leadership Associates



**System Center 2012
R2 Overview**



December 17, 2013

Licensing

Managed Servers

- **Consistent licensing model across editions:** Processor-based license, covering up to two processors for server management. User- or OSE- based license for client management.
- **Datacenter:** Maximizes cloud capacity with unlimited virtualization for high density private clouds
- **Standard:** For lightly or non-virtualized private cloud workloads.

Edition	Components Included
Microsoft System Center 2012 R2 Datacenter	<ul style="list-style-type: none">• Operations Manager• Configuration Manager• Data Protection Manager• Service Manager
Microsoft System Center 2012 R2 Standard	<ul style="list-style-type: none">• Virtual Machine Manager• Endpoint Protection• Orchestrator• App Controller

Licensing

Managed Clients

- Client Management Licenses (MLs) are required to for managed devices that run non-server OSEs

	Configuration Manager Client ML	Endpoint Protection Subscription	Client Management Suite Client ML
Components Included	Configuration Manager Virtual Machine Manager	Endpoint Protection	Service Manager Operations Manager Data Protection Manager Orchestrator
Included in Core CAL Suite	✓	✓	
Included in Enterprise CAL Suite	✓	✓	✓

System Center 2012 R2 solution overview

System Center capabilities



Infrastructure provisioning

Enterprise-class multitenant infrastructure for hybrid environments



Infrastructure monitoring

Comprehensive monitoring of physical, virtual, and cloud infrastructure



Automation and self-service

Application owner agility while IT retains control



Application performance monitoring

Deep insight into application health



IT service management

Flexible service delivery

Infrastructure provisioning



Enterprise-class multi-tenant infrastructure for hybrid environments

IT demands

Effectively manage virtual environments at-scale



Supports Windows Server scale & performance:

- Dynamic VHDX resize
 - Dynamic Memory support for Linux
 - Snapshot running VM
- Fibre-channel SAN connectivity

Reduce infrastructure complexity



Manage Windows Server file storage & Storage Spaces
Automated Hyper-V cluster upgrades with VMM
Service templates & runbooks for System Center components
Enable protection & recovery across datacenters

Deliver efficient infrastructure services across customer base



Multi-hypervisor clouds
Manage virtual networks
Automated standards-based TOR switch configuration
Multi-tenant edge gateway provisioning
Service management automation

Single tool for on-premises and cloud provisioning



Migrate workloads to Windows Azure Virtual Machines
Windows Azure Integration Pack

System Center supports enterprise-class scale and performance

System	Resource	Maximum number		Improvement factor
		Windows 2008 R2	Windows Server 2012 R2	
Host	Logical processors on hardware	64	320	5×
	Physical memory	1 TB	4 TB	4×
	Virtual processors per host	512	2,048	4×
Virtual machine	Virtual processors per virtual machine	4	64	16×
	Memory per virtual machine	64 GB	1 TB	16×
	Virtual disk capacity	2 TB	64 TB	32×
	Active virtual machines	384	1,024	2.7×
Cluster	Nodes	16	64	4×
	Virtual machines	1,000	8,000	8×

Manage Windows Server 2012 R2 virtualization scale with System Center 2012 R2 Virtual Machine Manager (VMM). Each VMM server manages upto 1000 hosts and 25000 VMs.

Enterprise-class management & open source support

Complete virtualization-management

VMM support for automated Hyper-V cluster upgrades without downtime

Snapshot running VM without downtime

Flexible storage provisioning & management

Windows Server file-based storage & Storage Spaces, incl. bare metal file server cluster provisioning

VM connectivity into fibre-channel SAN storage

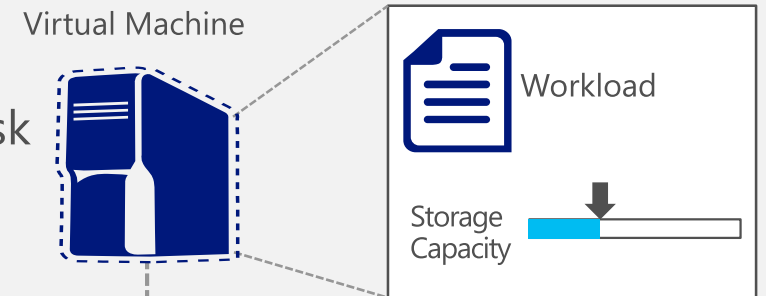
Robust Linux in-guest support

Greater VM density per host with Dynamic Memory support

File-level VM backups, restore full VMs

Dynamic VHDX resize

Grow SCSI virtual disk with no downtime



Windows Server Hyper-V
and System Center



VHDX



Multi-tenant cloud infrastructure

Simplified infrastructure service delivery

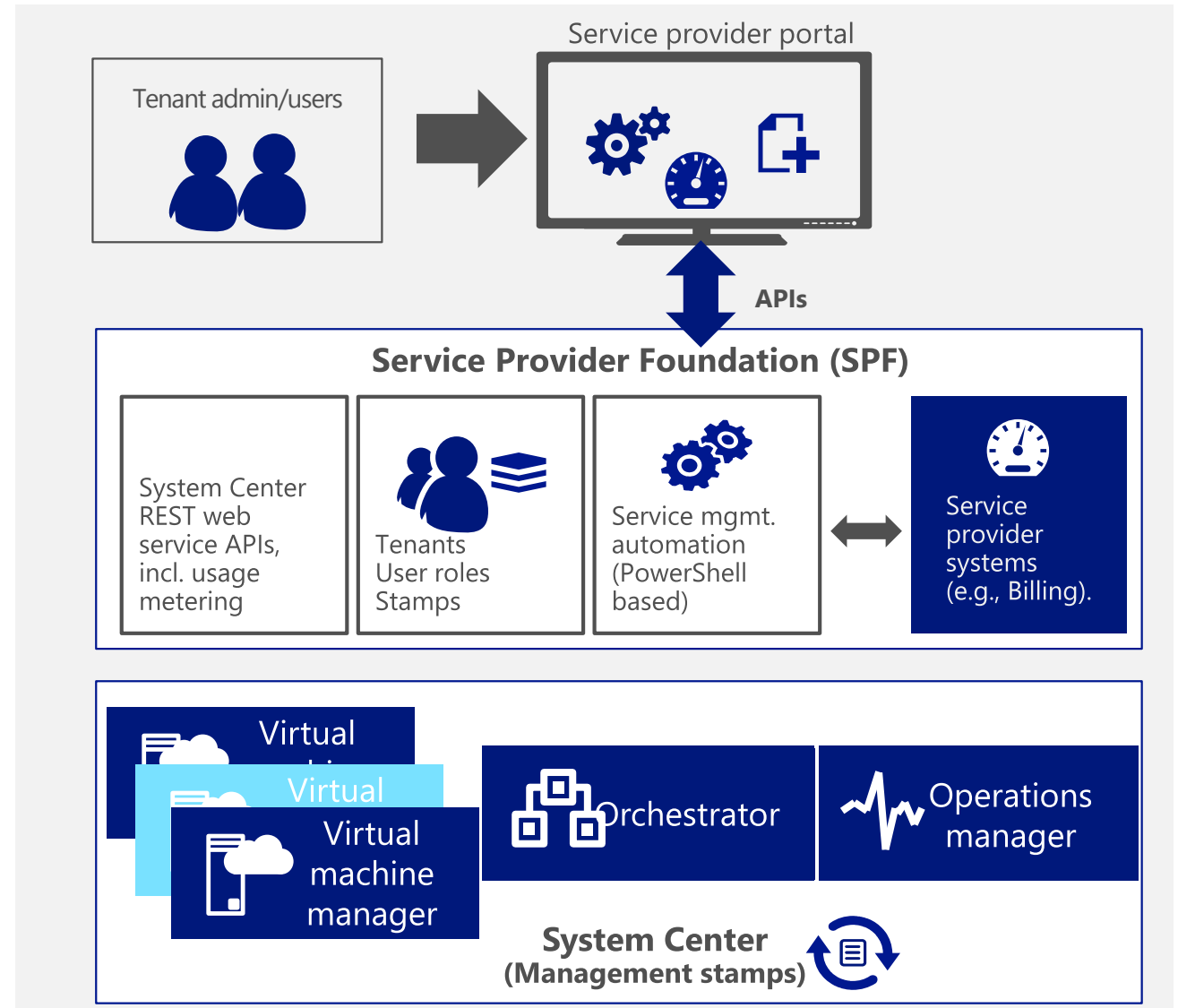
In-box service templates and runbooks for System Center components

Integrate existing investments using web-based interfaces to System Center capabilities

Scale management across multiple System Center instances (or "stamps")

Extensible service management automation

Tenant-level resource metering for capacity planning and usage analytics



Multi-tenant cloud infrastructure: service management automation

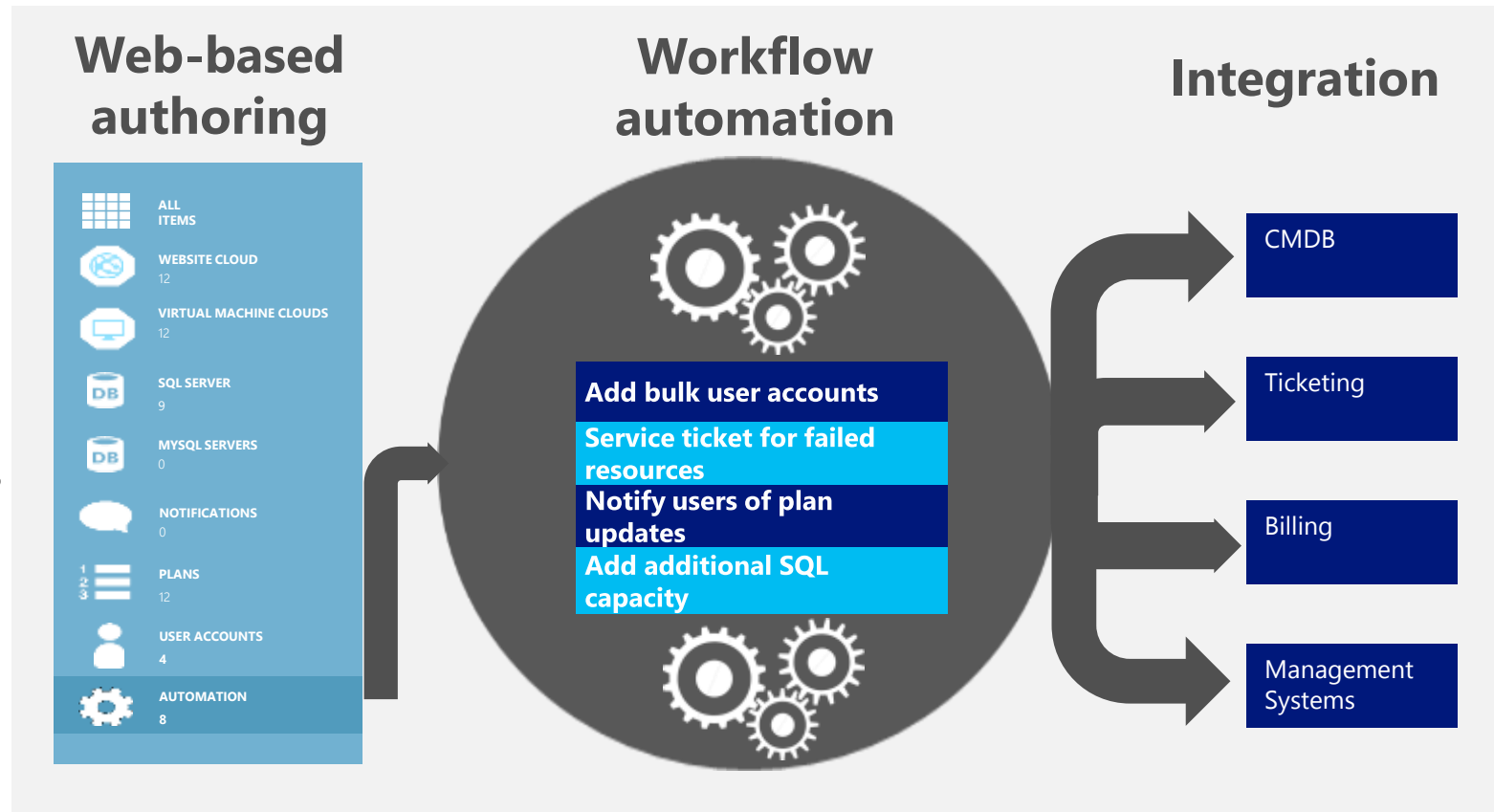
Enable efficient infrastructure delivery and operations

Web-based runbook authoring

Scalable, multitenant-aware
automation engine built on
PowerShell

_Import existing PowerShell scripts
and workflows

Integration with existing/ third-party
systems



Delivered by System Center 2012 R2 through the Orchestrator component by exposing the above features as web-service APIs along with SPF integration.

Multi-tenant cloud infrastructure: capacity planning and usage analytics

Granular metering of resource usage by tenant, including CPU, memory & storage

Enable business/ operational insight with tenant-level analytics

Data warehousing & reporting, incl. allocation, utilization & license compliance views

Integration with Cloud Cruiser cost analytics solution for chargeback



Usage metering and analytics are delivered by System Center 2012 R2 through Orchestrator as SPF web-services APIs, usage data is provided by Operations Manager and VMM. Windows Azure Pack surfaces the reports.

Multi-tenant cloud infrastructure: virtual networks

Open, extensible and standards-based solution that delivers flexibility, automation and control

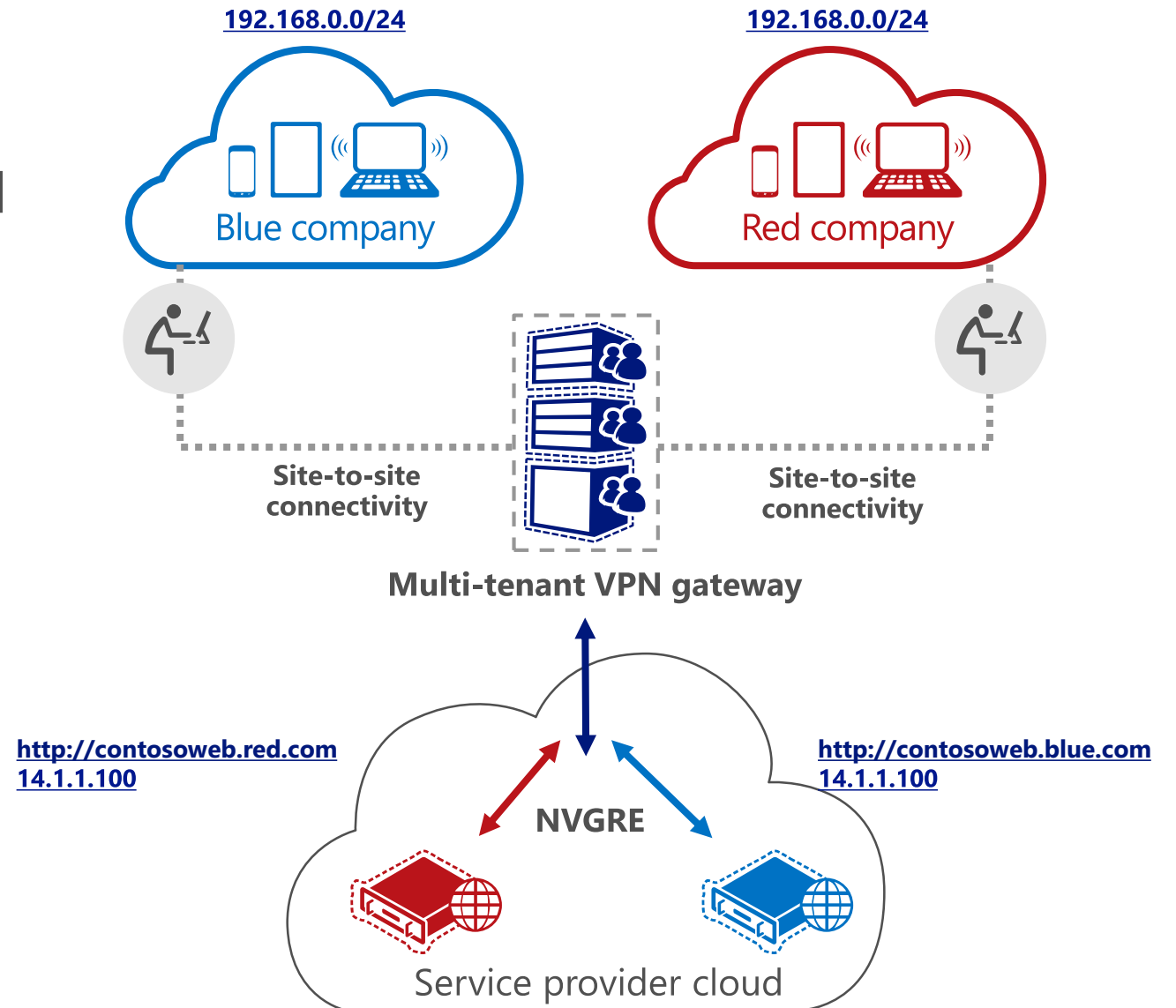
At-scale management of virtual networks on shared physical networks

Provision and configure multi-tenant edge gateway for seamless physical & virtual network connectivity

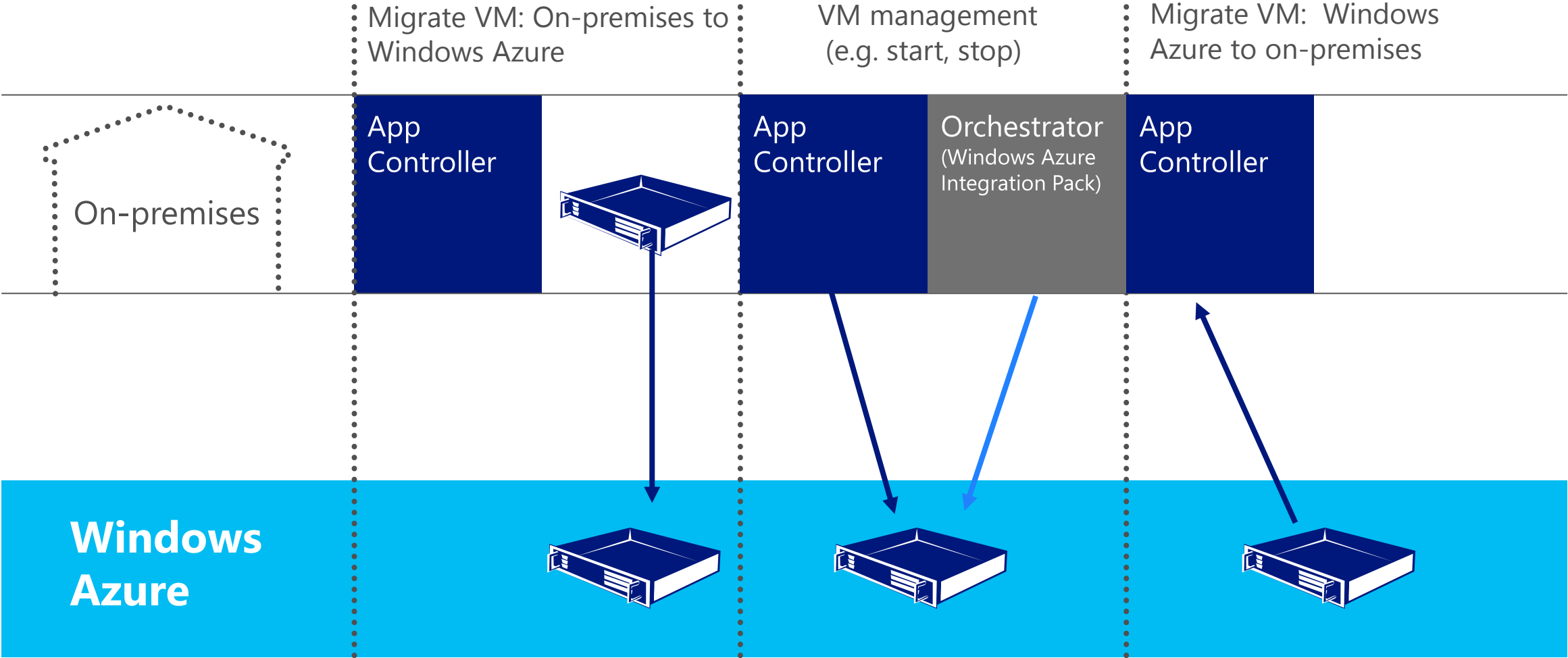
Enable easy remote access into virtualized service provider network for tenants

OMI-based plug-in for automated TOR switch configuration

Partner ecosystem support



Extend familiar System Center to manage Windows Azure Virtual Machines



Infrastructure monitoring



Comprehensive monitoring of physical, virtual, and cloud infrastructure

IT demands

Monitor diverse environments



Cross platform monitoring:

- Windows Server
- RHEL/SUSE Linux
- Oracle Solaris
- HP-UX & IBM AIX

Cross-platform configuration:

- Windows Server
- Linux/UNIX

Assure physical, virtual, and cloud infrastructure health



VMM-Operations Manager connector

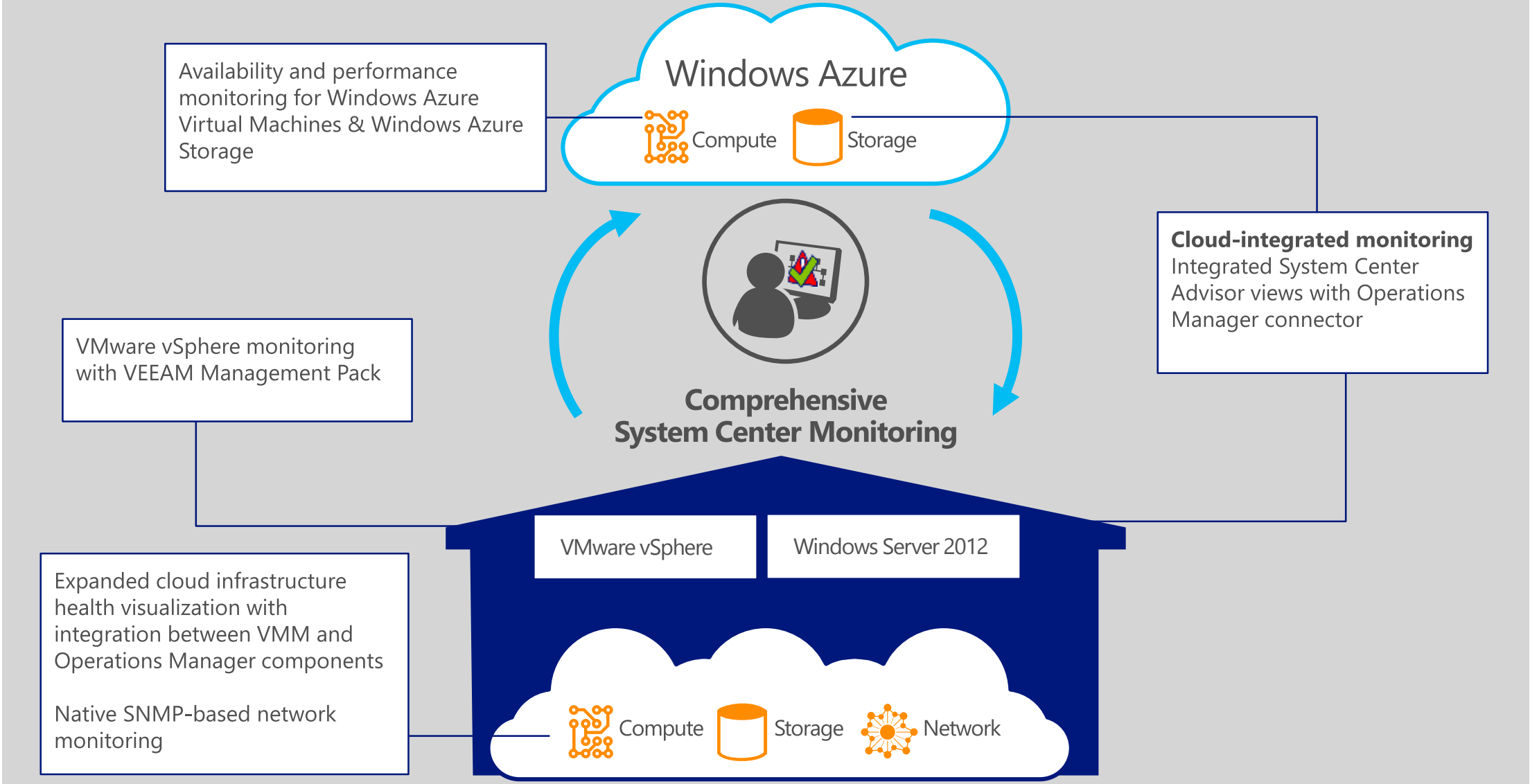
VMware vSphere health with VEEAM Management Pack
Network topology discovery
System Center Management Pack for Windows Azure
AWS Management Pack

Ensure reliable workload configurations



Best practice configuration for Windows Server 2012 with System Center Advisor connector

Deep infrastructure & workload insight



Automation and self-service



Application agility
while IT retains
control

IT demands

Empower app owners
while retaining control



Standardized application provisioning with service templates (e.g., SharePoint farms)

Scalable multi-VM tenant services with Windows Azure-consistent user experience (e.g. SQL cluster)

Common management tools for on-premises and cloud



Unified view across clouds with App Controller
Extend datacenter capacity with common VM templates & VHD images:

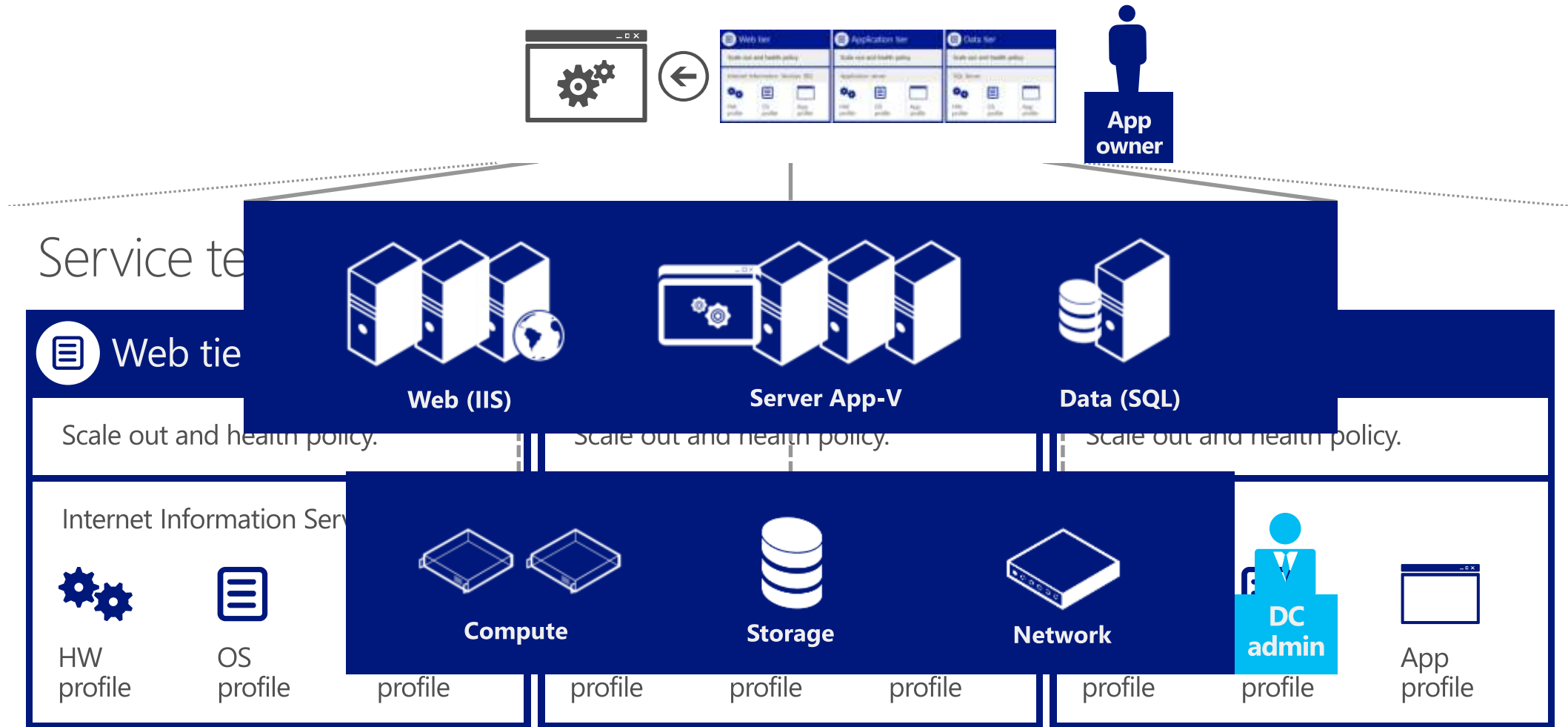
- VHDs for first party workloads like SharePoint
- VHDs for Windows Server & Linux

Dynamically expand capacity to support app SLA



Robust automation workflows with Orchestrator and PowerShell
Windows Azure Integration Pack for automated compute & storage deployment
SharePoint Integration Pack

Standardized application provisioning



Unified management view across clouds

The screenshot displays the Microsoft System Center 2012 App Controller interface. The top navigation bar includes 'System Center 2012' and 'App Controller' with a user profile 'Hi, Jeremy' and 'Sign out Help' options. A search bar is present with the placeholder text 'Enter keyword'. The left-hand navigation pane contains 'Overview', 'Clouds', 'Services', 'Virtual machines', 'Library', 'Jobs', and 'Settings'. The main content area is titled 'Clouds (10)' and features a toolbar with 'Register', 'New Service...', 'Assign access', 'Remove', and 'Properties' buttons. Below the toolbar is a table listing various cloud services and their configurations.

Cloud	System Type	Connection Name	Description	vCPUCapacity	Memory Capacity	Storage Capacity	VM Count
*Cloud System Name: ContosoDC-LAS							
Customer Service	SCVMM 2012	ContosoDC-LAS		6/38	16/100 GB	2037/12176 GB	2/12
Finance	SCVMM 2012	ContosoDC-LAS		4/8	69/71 GB	2532/3633 GB	6/16
Human Resources	SCVMM 2012	ContosoDC-LAS		22/38	62/104 GB	7434/12434 GB	8/14
Marketing	SCVMM 2012	ContosoDC-LAS		40/58	137/198 GB	15299/21962 GB	15/22
Sales	SCVMM 2012	ContosoDC-LAS		21/30	46/66 GB	6082/8686 GB	7/10
*Connection Name: FabrikamHosting							
Gold	SCVMM 2012	FabrikamHosting		40/58	137/198 GB	15299/21962 GB	15/22
Silver	SCVMM 2012	FabrikamHosting		5/52	19/172 GB	2233/19370 GB	2/20
*Cloud System Name: Windows Azure							
Marketing	Windows Azure	Windows Azure					
Sales	Windows Azure	Windows Azure					

Flexible delegation with single sign-on

Self-service visibility for application services across on-premises, service provider, and Windows Azure

Easy VM and workload portability from on-premises to Windows Azure (including SharePoint and SQL)

Application performance monitoring



Deep insight
into application
health

IT demands

Assure LOB application
SLA



.Net and Java monitoring,
including line-of-code
level traceability
Integrated transaction
monitoring with BlueStripe

Deep application insight

Enable rapid
application lifecycle



Faster issue tracking and
remediation with System
Center-Visual
Studio connector
Efficient app debugging with
Microsoft Monitoring Agent

Integrated dev-ops that
spans people, process

Assure great end-user
experiences & Microsoft
workload health



Outside-in monitoring with
Global Service Monitor
Best practice configurations
for MS workloads with System
Center Advisor connector
Management Packs for
Microsoft workloads and third
party ISV apps

Cloud-integrated insight
in familiar monitoring

Overcoming the dev-ops disconnect



"Do you know what might have caused the failure?"

"Hey, I just got a call about a failed application."

"How would I know?
You wrote the code!"

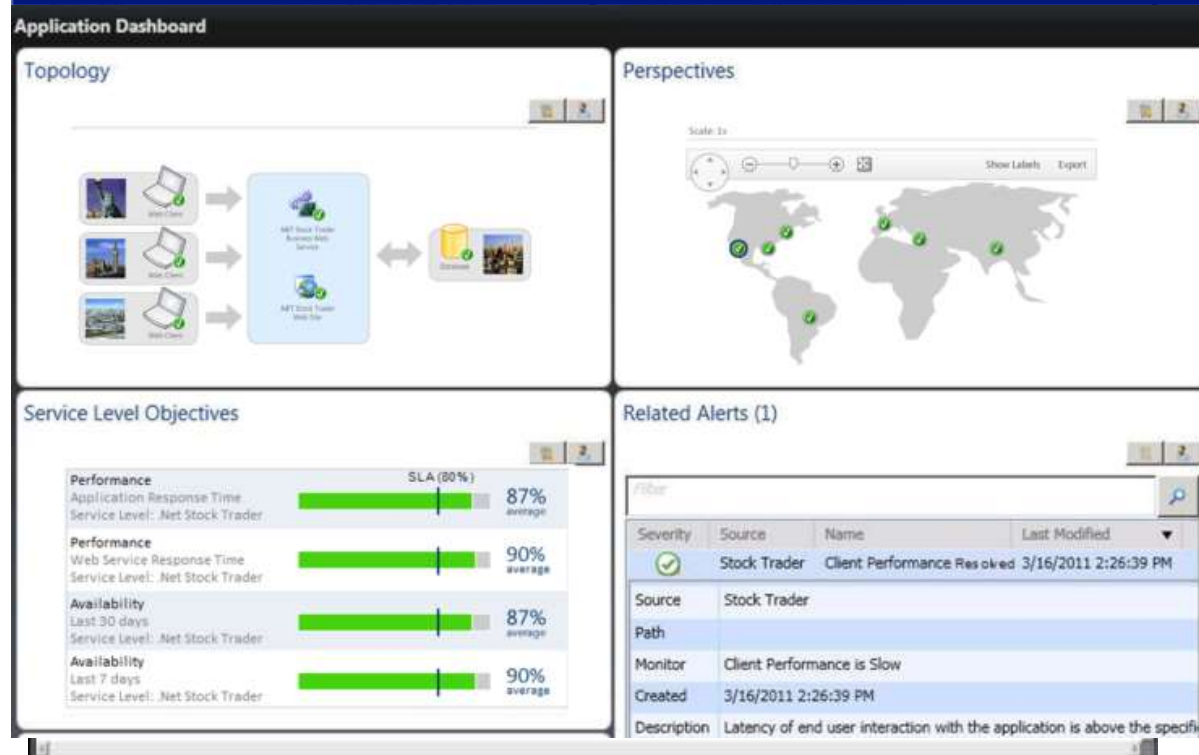


Deep application insight for .NET applications

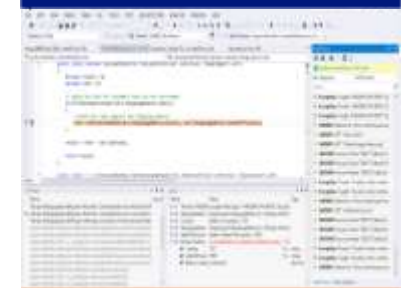
Discover application dependencies



Comprehensive monitoring & deep application insight help you "get to green"



Triage and remediate



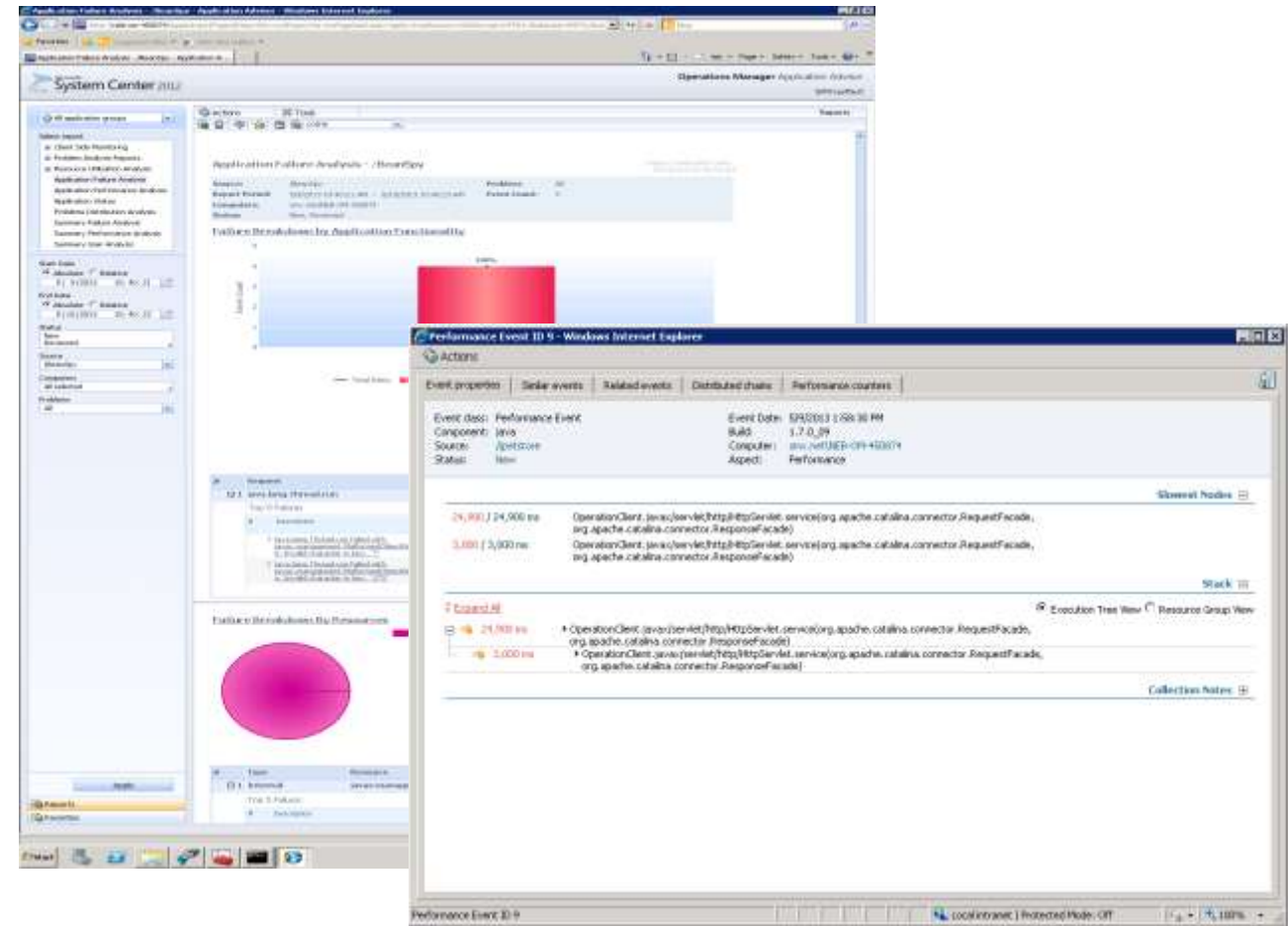
Deep application insight for Java applications

Java Tomcat application server support (v5.5, v6 and v7).





Windows & RHEL/SUSE Linux guest OS support.

Multiple instrumented Java frameworks, incl. web services and database connectors.

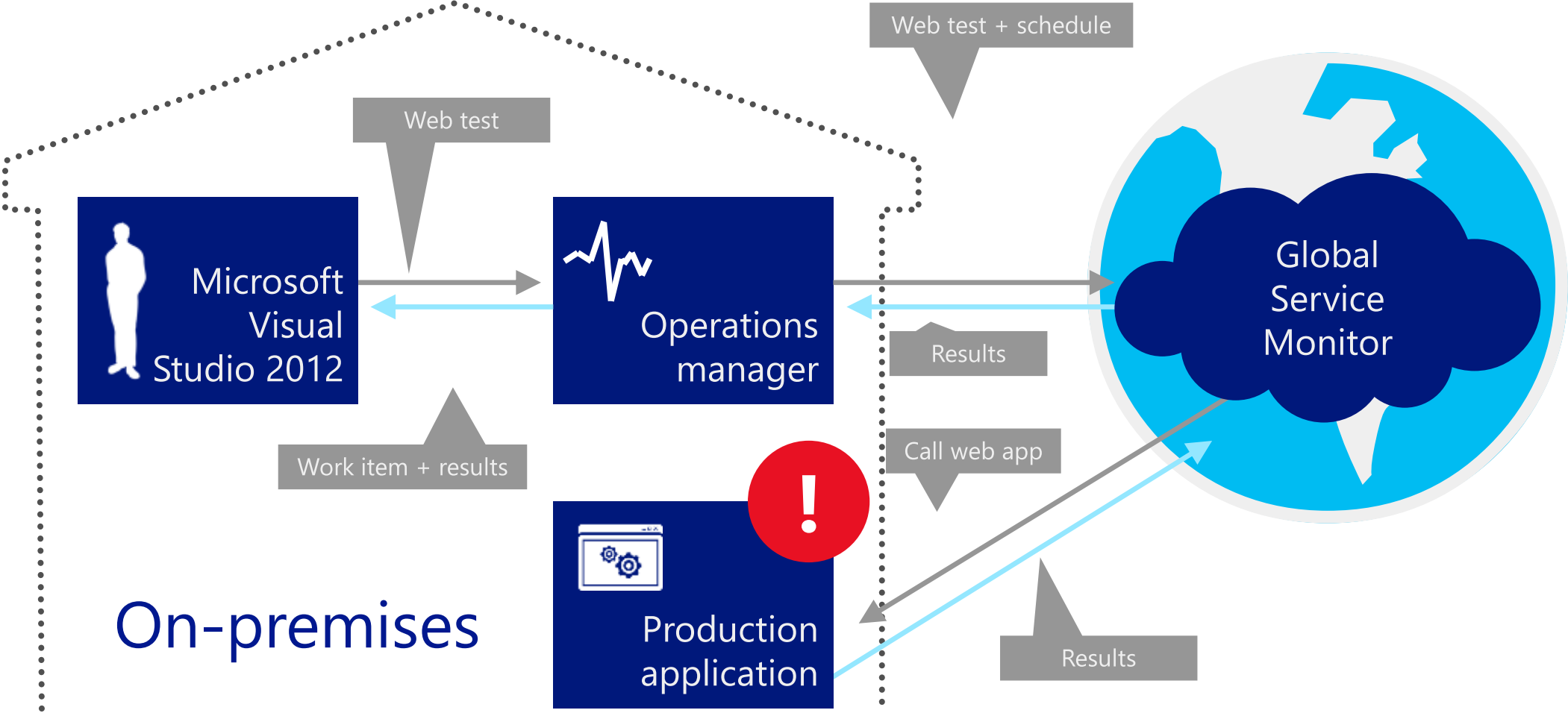
Code-level traceability with performance and exception metrics.



Java EE monitoring-supported platforms

			Supported operating systems matrix				
Supported JEE application servers			RHEL	SLES	Solaris	AIX	Windows
 IBM Webshare	6.1, 7.0	✓	✓		✓	✓	
 Oracle WebLogic	11gRel1, 10gRel3	✓	✓	✓		✓	
 Redhat JBoss	4.2, 5.1, 6	✓	✓			✓	
 Apache Tomcat	5.5, 6.0, 7	✓	✓			✓	

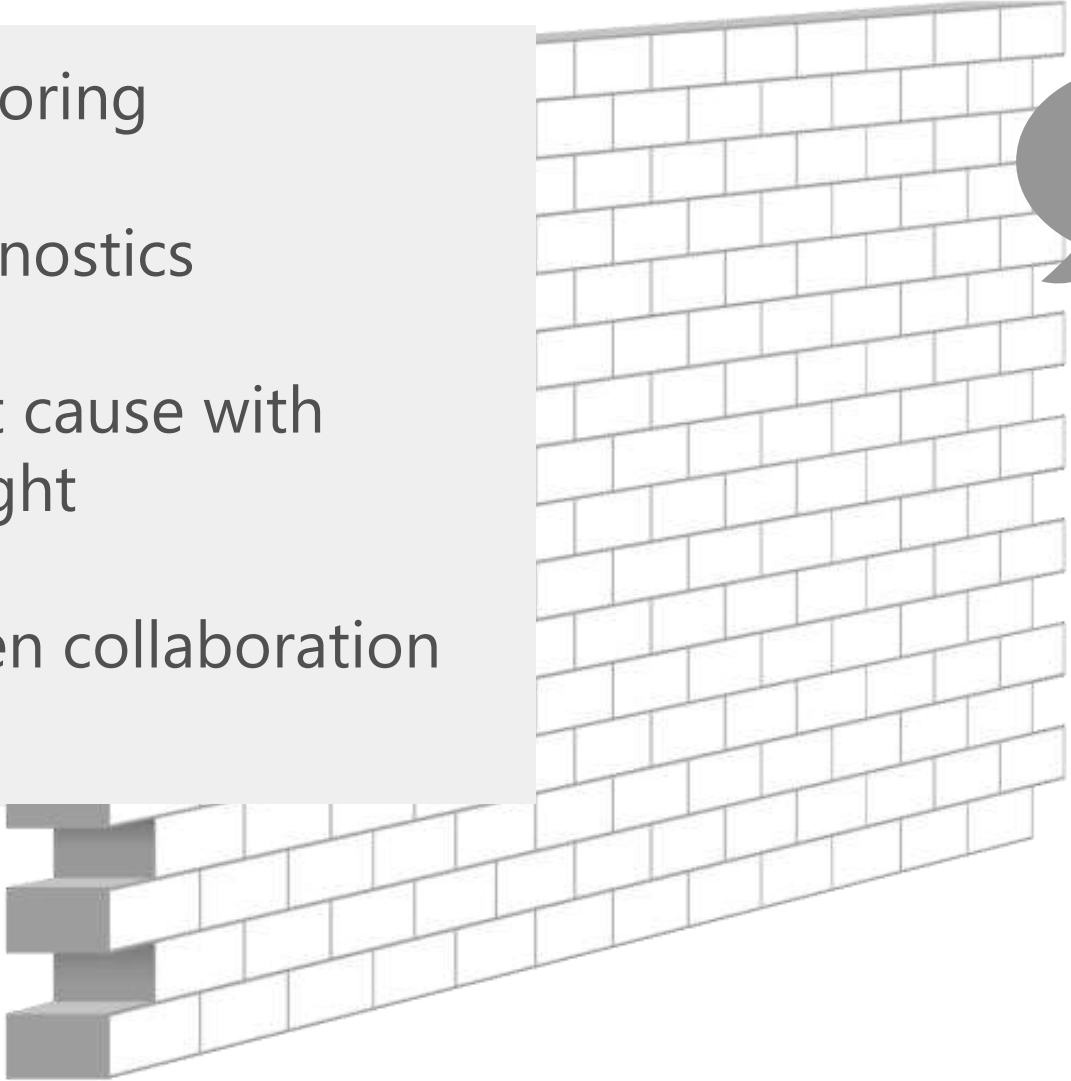
Cloud-integrated insight with Global Service Monitor (GSM)



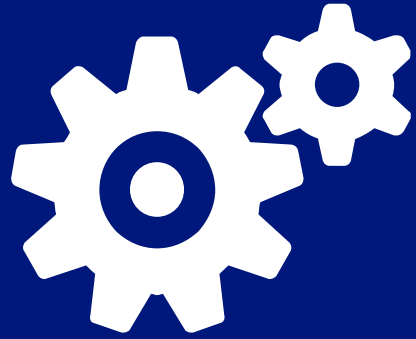
Overcoming the dev-ops disconnect



- Comprehensive monitoring
- Detailed diagnostic
- Identification of root cause with
granular level insight
- Automation of root cause with
granular level insight
- Tool-driven collaboration



IT service management



Flexible service delivery

IT demands

Enable easy publishing & consumption of IT services



Service catalog, including support for SharePoint 2013
Cloud Service Process Pack (CSPP)
Flexible service offerings and service request templates

Integrate people, process and knowledge



Automated workflows for incident, problem, change & release management
Configuration management database (CMDB)

Efficient resource utilization & SLA tracking



VM-level metering and price sheets
SLA reporting data warehouse
Integration with Cloud Cruiser cost analytics solution for chargeback

Flexible service delivery

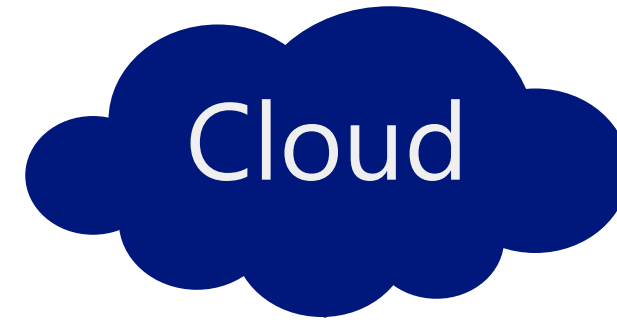
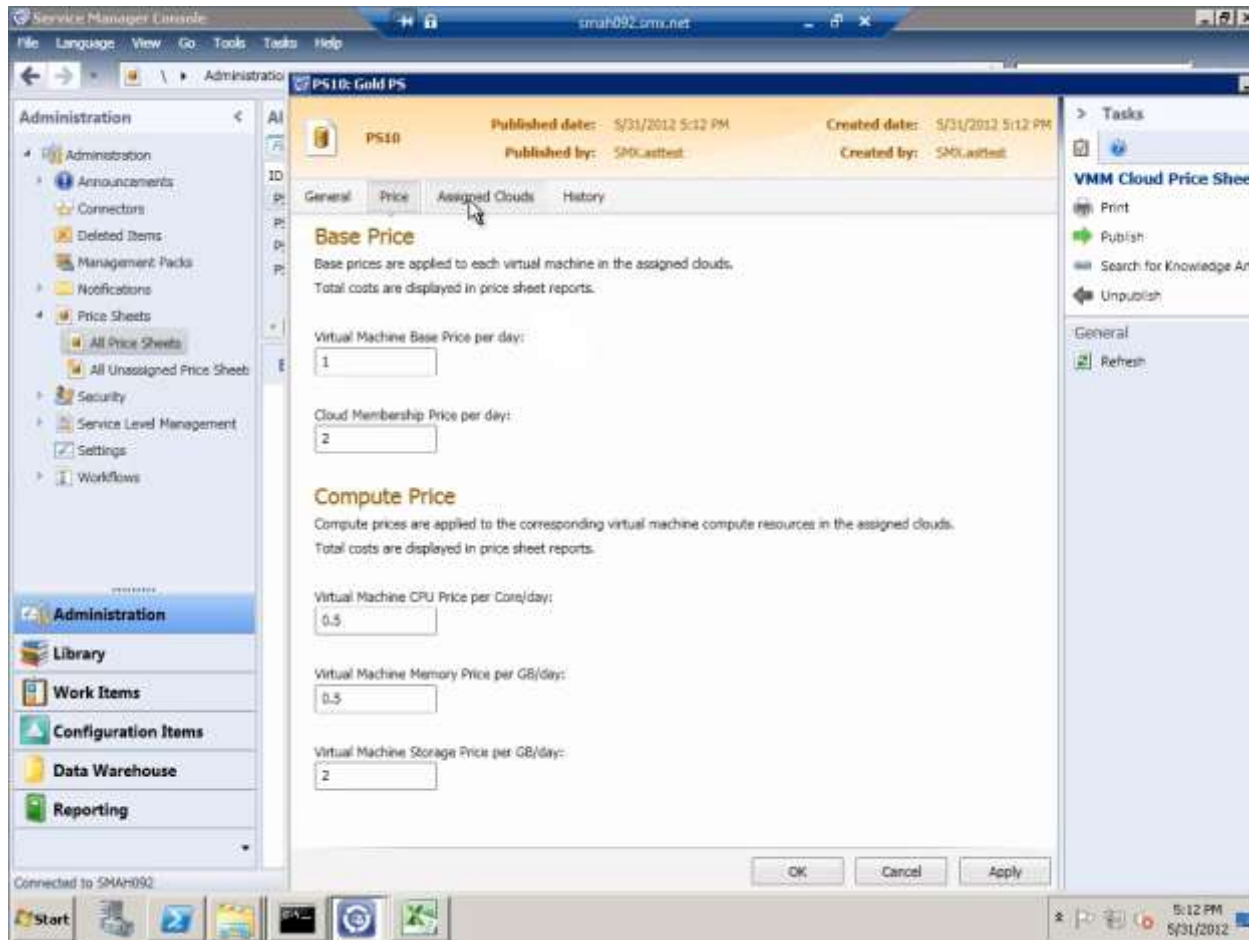
Provision service



Enables standardization and compliance



Deliver business and operational insight with chargeback



Price Sheet

\$ Virtual Machine/day

\$ Cloud Membership/day

\$ Virtual Machine CPU Core/day

\$ Virtual Machine Memory GB/day

\$ Virtual Machine Storage GB/day

Why choose System Center 2012 R2

Enterprise-class



Best-of-breed management for Windows Server and Microsoft workloads

Multitenant virtual networking, including edge gateway provisioning to bridge physical and virtual networks

Support for VM connectivity into virtual Fibre Channel SAN

Multi-hypervisor support, including Hyper-V, VMware, and Citrix

Robust open source support: Dynamic Memory for Linux, Unix/ Linux monitoring and configuration

Unified monitoring for on-premises and Windows Azure infrastructure

Simple and cost-effective



In-box service templates and runbooks for System Center components

Web-based interfaces to System Center capabilities to help integrate existing investments

Standards-based top-of-rack network switch configuration

Windows Server file-based storage and Storage Spaces support

Extensible service management automation and integration

Workload protection & recovery across datacenters with Windows Azure Hyper-V Recovery Manager

Application focused



Easy VM portability and management between Windows Server and Windows Azure

Deep .NET and Java application monitoring and diagnostics

Standardized app provisioning with service templates

Integrated dev-ops with System Center-Visual Studio connector

Cloud-integrated app and workload insight with Global Service Monitor and System Center Advisor

Management Packs with extensive built-in knowledge for Microsoft Exchange, SQL, SharePoint

Appendix

System Center 2012 R2: Unified management for the Cloud OS

Enterprise-class



Simple and cost-effective



Application focused



1. Multi-hypervisor private clouds
2. Multitenant virtual networks
3. SAN & file-based storage management
4. Robust Linux support
5. Process automation & integration
6. APM for .NET and Java apps
7. Cloud-integrated monitoring & dev-ops
8. VM portability across clouds
9. Service Provider Foundation
10. Service templates

Top System Center 2012 R2 features

What's new in System Center 2012 R2

Infrastructure provisioning		Automated Hyper-V cluster upgrades w/o downtime using Live Migration	Tenant-level usage metering and reporting	Storage Spaces support
Snapshot running VMs without downtime	Dynamic Memory resize for running VMs	ODX support for faster VM provisioning from templates	Virtual Fibre channel SAN connectivity support	File-level Linux VM backups, restore full Linux VM
Dynamic VHDX resize	Dynamic Memory support for Linux VMs	Service templates for DPM, Service Manager, SPF and Ops. Mgr.	Runbook based configuration for all System Center components	

Infrastructure monitoring			
Native SNMP monitoring and IPv6 support	VMM integration with Operations Manager for fabric health visualization	System Center Advisor connector for Operations Manager	System Center Management Pack for Windows Azure

Automation and self-service		
Orchestrator Integration Pack for SharePoint (new)	Service management automation with REST APIs & PowerShell	Updated System Center Integration packs

IT Service Management
SharePoint 2013 support for Service Manager portal

Application performance monitoring		
System Center Advisor connector for Operations Manager	Java APM	Microsoft Monitoring Agent

Virtual Machine Manager

SYSTEM CENTER 2012 R2

- Multi-hypervisor support
- Multitenant isolation with virtual networks,
- Multitenant edge gateway provisioning to bridge physical and virtual networks
- Storage management, incl. VM connectivity into fiber channel SANs & Storage Spaces support
- Service templates
- Server application virtualization
- Dynamic Optimization & Power Optimization
- Windows-Azure consistent VM management and virtual network APIs

BENEFITS

- Preserve and optimize existing infrastructure investments
- Improve infrastructure SLAs
- Reduce operational expense
- Flexible provisioning in shared multitenant environments
- End to end management of virtualized and cloud datacenter resources
- Save time with standardized service creation and upgrades
- Enable consistent management experiences between Windows Server and Windows Azure environments

Operations Manager

SYSTEM CENTER 2012 R2

- .NET and Java Application performance management
- Monitoring across on-premises and Windows Azure (incl. System Center Management Pack for Windows Azure)
- Improved UNIX and Linux support
- Network monitoring
- Customizable dashboards
- Global Service Monitor
- Integrated System Center Advisor views
- Integrated dev-ops
- Management packs for Microsoft workloads and third party ISV apps

BENEFITS

- Comprehensive physical, virtual and cloud infrastructure monitoring using familiar console
- Enhanced dev-ops collaboration and decreased time to resolution with deep application insight
- Improve insights with personalized reporting
- Cloud-integrated insight to assure predictable application and workload SLA

Orchestrator

SYSTEM CENTER 2012 R2

- Workflow automation
- Enable integration of third-party management tools
- Simple design of custom workflow runbooks
- Updated Integration Packs (IP), incl. Windows Azure IP & SharePoint IP
- Service Provider Foundation (SPF)
 - Enable aggregation of multiple infrastructure stamps
 - REST-based web APIs for System Center components
 - Service management automation including built-in PowerShell workflows and REST APIs

BENEFITS

- Lower costs and increase reliability by automating repetitive tasks
- Simplify heterogeneous datacenter management
- Have IT resources focus on higher business impact projects
- Enable multitenant infrastructure provisioning and custom automation
- Enable service provider infrastructure to be easily consumed by enterprises

App Controller

SYSTEM CENTER 2012 R2

- Role-based access for the app owner
- Single view of delegated resources across private and public clouds
- Deploy and manage services in addition to virtual machines
- VM portability between Windows Server and Windows Azure
- Expose service provider infrastructure to enterprises through SPF integration

BENEFITS

- Increase app owner agility with self-service interface
- Save time by bringing together all delegated infrastructure
- Improve reliability by deploying template-based services
- Flexible datacenter capacity management
- Unified view across on-premises, service provider and Windows Azure infrastructure

Service Manager

SYSTEM CENTER 2012 R2

- Service catalog
- Self-service request portal
- Release and SLA management
- Data warehousing and reporting
- Cloud Service Process Pack (CSPP)
- Chargeback metering and price sheets for VMs
- SharePoint 2013 support for service request portal

BENEFITS

- Increase organizational agility with customized service offerings
- Improve corporate compliance through process management
- Improve business intelligence through customized reporting and basic chargeback

Data Protection Manager

SYSTEM CENTER 2012 R2

- Centralized management of servers with Data Protection Manager
- Role-based administration
- Item-level recovery for virtual machines
- Best of breed protection and recovery for Microsoft workloads (Exchange, SharePoint, SQL)

BENEFITS

- Save time with consolidated management server console
- Secure access for the broader IT team
- Quicker time to recovery
- Granular protection for Microsoft workloads

Configuration Manager

SYSTEM CENTER 2012 R2

- Improved settings management with remediation
- Integrated antimalware with System Center Endpoint Protection
- Delegated administration
- Linux/Unix configuration support

BENEFITS

- Reduce compliance complexity
- Improve support for virtualized environments
- Reduce cost through integrated security
- Cross-platform configuration