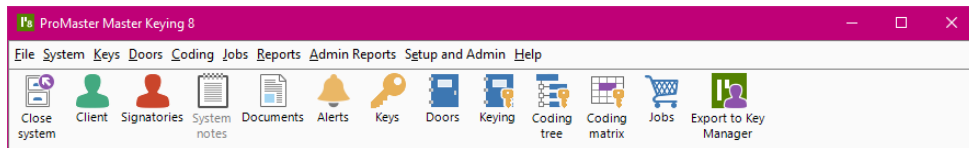




ProMaster Master-Keying 8

WH Software Ltd



Overview for PM7 users

26 March 2019

What is ProMaster Master-Keying 8?

Version 8 "PM8" is the latest major release of the ProMaster Master-Keying software family. It is a 100% redevelopment and supersedes version 7 "PM7".

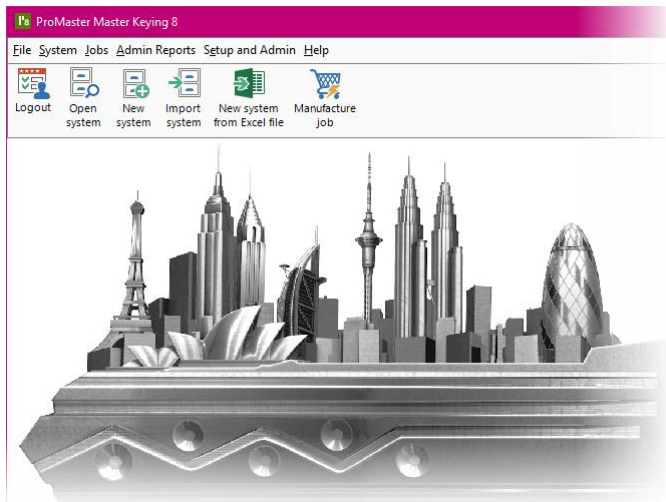
Why has version 8 been produced?

PM7 has been around for 11 years, and in that time has had hundreds of updates to add features and design modules. PM7 is based on older technologies internally which don't allow the product to grow, which don't allow performance benefits from modern servers, and which don't allow user interface design to be matched to modern Windows appearance. A fundamental requirement of being dominant in the provision of master keying software is to ensure that we have a long-term plan in place to meet customer expectations of stability and longevity.

What is different?

The look and feel

The user interface has been designed to be crisp and clean, with use of images for task identification and consistency of style and wording.



Reports also have been redesigned to provide a sharp modern appearance.

Choices remembered

In many search and data entry screens, choices you make are remembered and automatically set next time you visit the same screen, making PM8 automatically adjust to the way you work.

Searching

Many screens where you search for data are beefed up with more items that you can search for. For example, when opening a system, you can search by signatory name.

Data capacity

With few exceptions, add data fields are significantly larger than in PM7. All fields can now store data from any language (The data is Unicode compliant).

Data size examples – a small selection

Data field	PM7 size	PM8 size
System number	10	20
System description	100	200
Key number	10	20
Key description	30	200
Door number	10	20
Door description	30	200
Door area	20	200

You get the idea!

New data fields

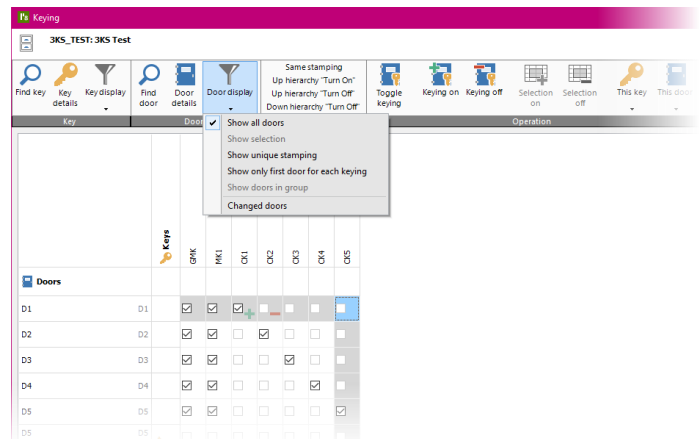
Various data fields have been added to give greater flexibility. Examples are Doors: stage, height, width, thickness; Keys: part code; Client: code, second contact, second phone, email etc; System: second contact, design notes; Job: sales order, customer code.

Door external and internal keying

Doors may now be flagged as having different keying for an internal cylinder and then keying and corresponding calculations are performed for both the external and the internal cylinder.

Keying matrix

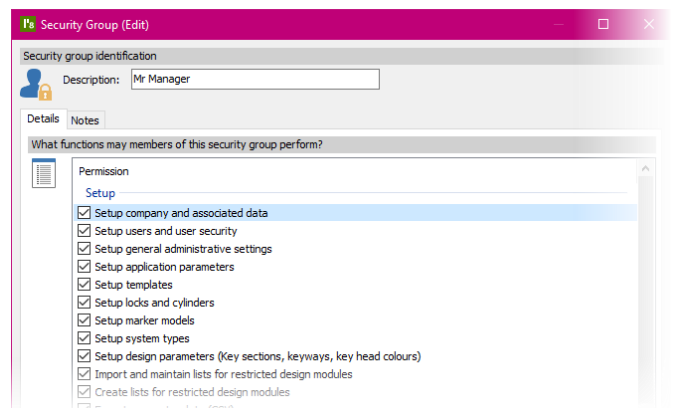
Highlight door/key search, much improved mouse control, indicators for where keying has changed, indicators for same stamping, indicators for missing keying, more fine-grained propagation control.



Various ways to filter the view shown including by key or door group, hiding masters, from a search of keys or doors, showing by stamping and a non-editable view where only the first door for each unique stamping is shown (This is very useful when coding complex systems, and is an option for the keying matrix report also). As well as horizontal, vertical and diagonal lines of keying, you can now also select a rectangular block and set or remove the keying for that selection in a single operation. Assign all to a key, assign all to a door, and undo for keys and doors.

Security

Security has been moved from a user-by-user basis to security groups. Each user belongs to a security group and the security group controls permissions and system access through security categories. This allows much easier control when there are more than a handful of users.



Email

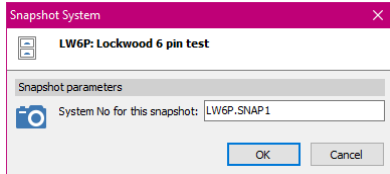
SMTP email has been enhanced to use secure SMTP (e.g. if you use Office 365) and to use rich text for the email instead of plain text.

Client signatories

Signatories have been introduced at the client level, and these are linked to appropriate systems for that client, making management of the signatories easier and making the client signatories readily available for new systems.

System snapshots

System snapshots effectively make a 100% copy of the system and make it a non-editable backup. Great for providing security before making changes that may later be unrequired and for backing up a system before undertaking complex coding changes.



Excel export and import

The Excel export and import now uses the latest xlsx file format with enough columns for thousands of keys without needing to use multiple pages. Multiple spreadsheet layouts can be accommodated through a simple editor that allows you to define alternative spreadsheet layouts.

An installation of Excel is no longer required to be able to export and import to the spreadsheet format, and a nice side benefit of this is that the spreadsheet reading, and writing is now a huge amount faster.

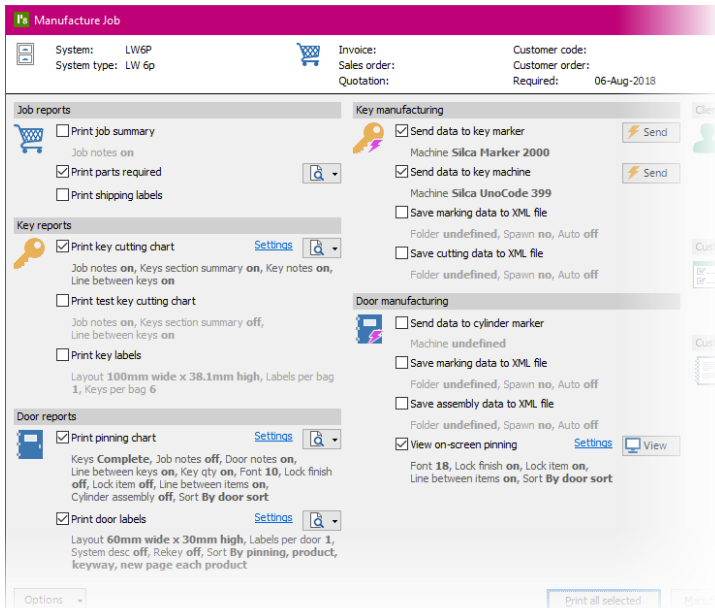
System types

System type configuration has been significantly enhanced, now encompassing many settings that were previously global to each design module and tucked away in the application parameters.

As a result of the system type setup and in other areas “on-the-fly” choices, the number of application parameters has been reduced to just the essentials making them easier to navigate.

Manufacturing

A significant redesign to the job manufacturing interface gives many more options and makes it much easier to perform a single task (e.g. Preview a single report or send data to a machine) without having to deselect other choices.



The on-screen pinning is revamped to be crisper and cleaner with improved navigation and bookmarks.

Machines

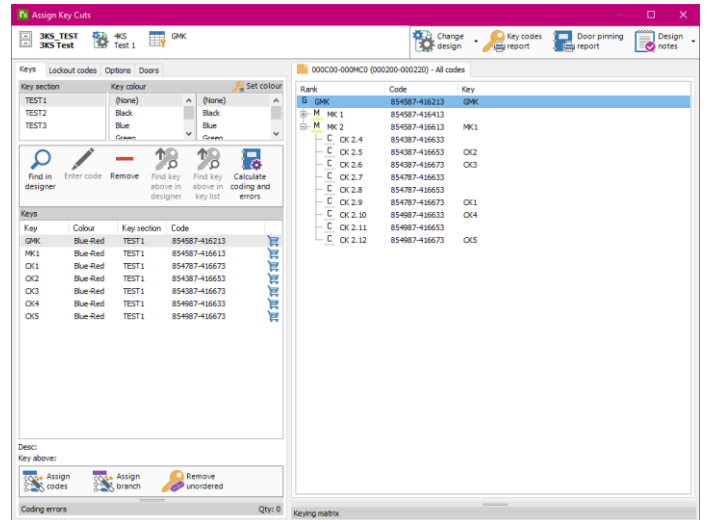
The manufacturing interface has been redesigned to give more options when downloading to machines, including the ability on many machines to batch download the job in sections.

Support is added for the Silca Futura and the Miracle for standard keys.

The setup for machines has been simplified and unified into a single screen that is accessible from several areas of the program.

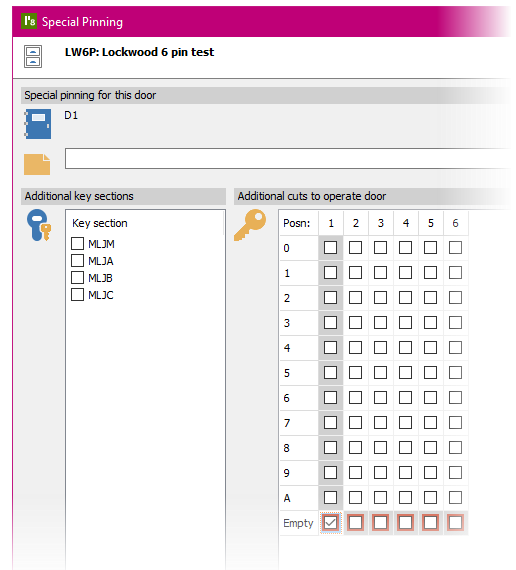
Coding

Significantly faster loading of the coding tree on huge systems.



Progressions are sortable and have notes attached to each progression. The progression editor is dramatically enhanced.

Special pinning is available on most design modules, and where appropriate there is the capability to say that a chamber in the cylinder is to be left empty (resulting in empty pinning, altered phantom checking, altered outputs for pinning, on-screen pinning and XML).



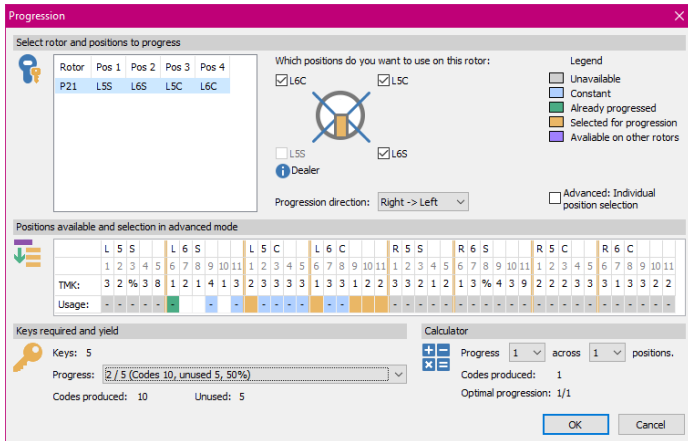
Design notes (with rich text) are available to document the design, and both system notes and design notes are accessible while coding.

Key codes and door pinning reports are available from within the coding screens to allow immediate checking of the coding solution.

On the coding matrix there is a feature that highlights codes below the selected code – useful for understanding a huge coding matrix.

The keying matrix what is available in the coding screens is enhanced, and the full keying matrix can be opened while coding and moved to a second monitor to assist while coding cross keyed systems.

Significant enhancements to the coding for all Kaba modules.



Key hierarchy

The key hierarchy display allows you to drag keys around to change the key above, and the key hierarchy can be printed prior to committing changes.

Alerts

Alerts can be attached to a system and they appear when you have the system open. Continual alerts and alerts that appear on a date are supported.

Key sections

Key sections and keyways are consistent across design modules with a unified editor for defining key section families, including longer key section and keyway names and sorting.

Signature registration form

The text that appears on the signature registration form is customisable and supports rich text.

Exports and imports

Most configuration information such as clients, locks, cylinders can be exported and imported via csv files.

Branch addresses

Multiple addresses for your company may be defined and users may be associated with a branch address. This controls the information printed in the report headers.

Door signatories

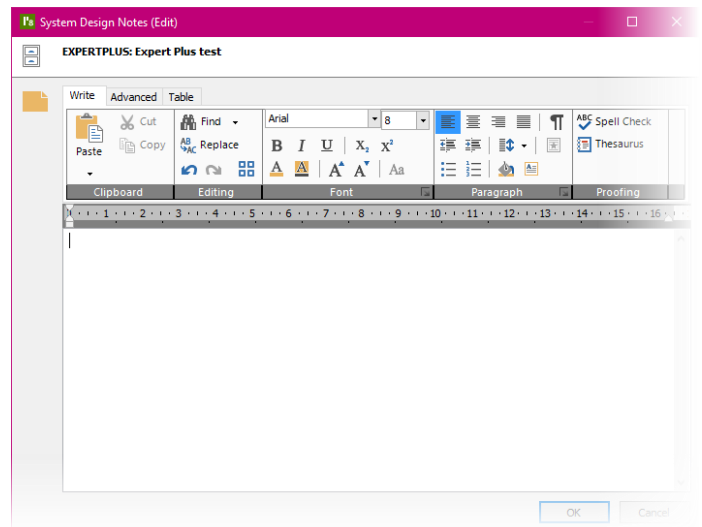
Quantity of signatories required for each door, and individual door signatories may be specified, just like for keys.

Report header graphics

There are now three options for report headers –text, text with small logo graphic and full width logo graphic.

Rich text

Pretty much everywhere notes are stored they are now implemented as rich text allowing better layout and emphasis of important points.



Key and door groups

Key and door group implementation is greatly improved making it much easier to manage and use key and door groups.

Label layout editor

Various door and key label layouts are provided as standard and using the label layout editor you can make your own label layouts. If you need a different label size, make a new layout yourself in minutes.

Data locking

To stop users accidentally editing data that another user is changing, a locking system is introduced to ensure exclusive access to any system and common data you are editing.

Setup permissions

Most setup functions can be performed by users with appropriate permissions removing the need to log in as admin to make these changes.

The database

The database underpinning PM8 is Firebird 3.0.4, many years and many versions more modern than that used by PM7.

What does this mean?

It is more robust. It performs better. It uses modern server hardware better, including multiple CPUs to provide better performance. It removes all known vulnerabilities present in the older database engine. It provides data encryption for the data being transferred across the network protecting your data from malicious attack.

Three product editions

Breaking with long standing “one product fits all”, PM8 is being offered as three product editions. The three editions are called ProMaster Master-Keying 8 Basic, ProMaster Master-Keying 8 Premium and ProMaster Master-Keying 8 Manufacturer.

Basic

Single user. Design modules that may be added: Inline, MLA Binary Plus, MLA DC1, Interchangeable Core, Lockwood Twin. For customers with a single user who produce inline master key systems.

Premium

Any number of users may be added. Almost all design modules may be added. The standard replacement for PM7.

Manufacturer

Any number of users may be added. All design modules may be added. For manufacturers with special features and integration.

Upgrade pathways

From version 7

An upgrade pathway is offered to PM7 customers to move to PM8. The option to upgrade to PM8 Basic is available if the PM7 license is single user and does not have any design modules that are not available in PM8.

From version 5, 4, 3, 2

No upgrade pricing is offered from these old product versions to PM8.

The data porting tool can upgrade a PM7, PM5 or PM4 database to PM8 to preserve the data if a new license of PM8 is purchased. Upgrading data from versions 3 or 2 require a multi-step process that will be offered as a paid service.

PM5 was released 1 June 2003. PM7 was released 1 June 2008.

Important compatibility matters

ProMaster Master-Keying Import/export

Full export/import is available to PM8 provided they are both on the same data interchange version.

Export/import is available to PM7 (Latest PM7 file format) provided no features have been used in PM8 that would be impossible to import or use in PM7.

Export/import to versions prior to PM7 (5, 4, 3, 2, 1) is not possible.

ProMaster Key Manager Import/export

Export/import to ProMaster Key Manager version 7 “KM7” is supported.

Export/import to versions prior to KM7 (5, 4, 3, 2) is not possible.

Contacting WH Software

Phone: +64 9 415-5333

UK Phone: 0800 917-2694

USA Phone: 1888 648-7111

Website: www.whsoftware.com

Email: support@whsoftware.com

Resellers

Australia

Locksmith Supply Company

Phone: +61 3 9329-7222

Email: support@lsc.com.au

New Zealand

Locksmith Supply Company

Phone: +64 9 444-5117

Canada

Abloy Canada Inc

Phone: +514 335-9500