



# Promise Institute Moneyball Summit 2019



New Haven  
PROMISE

# THE PROMISE INSTITUTE

The Promise Institute was established to help communities disrupt the status quo.

When New Haven Promise hosted PromiseNet in 2014, it had not yet graduated its first scholar, but its leaders knew it had a larger role to play in the Promise movement. In the last five years, we've heard from those in more than 30 states, looking for solutions to apply for young people in their own cities.

Just as we ask our scholars and families to give back and pay it forward, New Haven Promise embraced the movement's core value of generosity, and formally embedded the notion of knowledge sharing into its mission and stated goals.

Embracing collective impact with our partners, we are closing the opportunity gap for our young people and are creating economic opportunities for the city through a return on human investment.

And while we remain proud of our involvement in the Promise movement and its wide-ranging designs, New Haven Promise has been focused on the 'incentive-based' design, unique to our particular context that has been in place from the start.

The use of incentives and motivations has challenged students to reach a higher standard that makes them more prepared to succeed in college, career and life. It has also provided fiscal responsibility for both the funder and the recipient, an important criteria for sustaining a Promise program over time.

In the fall of 2018, New Haven Promise and Promise Institute decided to host its first Moneyball Summit with a focus on this unique design. We hope that it serves as a catalyst for other cities to jump into the movement where they are to instill hope but more importantly initiate actionable steps to transform their communities.

As we have often asked, "What does it look like when an entire community embraces its young people to college, supports them through college and brings them back to launch their career and civic lives in the city they love?" A thriving Promise program, of course!

The opportunity to provide opportunity awaits. We challenge everyone to seize the moment and act now.



## PATRICIA MELTON

*Co-Founder*

Melton — an award-winning educator and change agent — has increased educational access for communities across a variety of sectors including colleges, traditional public, public charter and independent schools. She has implemented several initiatives to benefit New Haven's youth, including an extensive paid internship and career initiative designed to give students opportunities and to develop local diverse talent as an asset within their hometown.

Throughout her career, Melton's initiatives have impacted thousands of students. Prior to returning to Connecticut, Melton coached several small-school design teams, which created Early College High Schools throughout Ohio and Indiana. She also led a successful transformation effort as the chief academic officer for the Evansville Vanderburgh School Corporation, Indiana's third-largest school district. A graduate of Yale College, where she was a track & field All-American, Melton was awarded an honorary Doctor of Humane Letters degree from the University of New Haven in 2018.



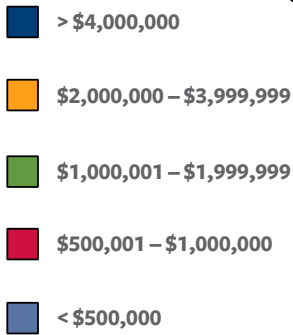
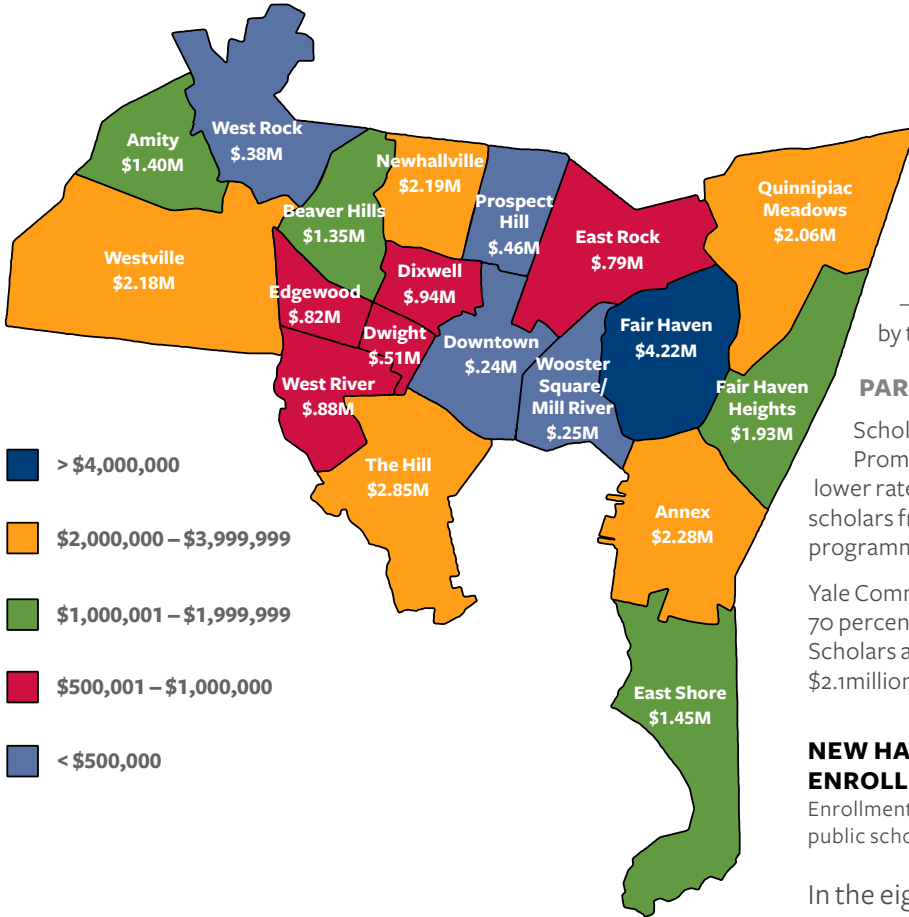
## BRETT HOOVER

*Co-Founder*

Hoover came to the Promise scholarship movement from an unlikely place — the press box. A former college athletics administrator, that portion of his career culminated with an eight-year stint as Associate Director of the Ivy League, a position he left in 2008 to pursue opportunities serving urban education. The following year he joined with Patricia Melton to embark upon innovative education pursuits that eventually led to his role at New Haven Promise, where he oversees digital systems, data management and strategic analysis.

Since moving to New Haven in 2012, Hoover has participated at the Strategic Data Project Institute for Leadership in Analytics, a Harvard University program that trains education professionals to leverage data to inform decision making, and served as an Education Pioneers Fellow, which provides pathways into education leadership to solve problems outside the classroom. In 2014, Hoover was a driving force in bringing record numbers of attendees to the national PromiseNet conference, which was hosted in New Haven and he later served on technology forums at PromiseNet events in Washington, D.C., and Kalamazoo, Mich.

# INVESTMENT IMPACT



## OUR COMMUNITY FOOTPRINT FUNDING TO DATE

### MILLIONS INVESTED

Scholars from 10 of the city's 20 neighborhoods have received more than \$1 million in funding from New Haven Promise, Promise-leveraged scholarships and federal aid since 2011.

Fair Haven, The Hill, Newhallville & Fair Haven Heights — 4 of the top beneficiaries — are among the neighborhoods targeted by the Yale Community Hiring Initiative.

## PARTICIPATION MATTERS FOR JOBS

Scholars from target neighborhoods have attended Promise's internship fairs and resume workshops at lower rates than the full scholar population. However, when scholars from these neighborhoods participate in career programming, their hire rate exceeds the full population.

Yale Community Hiring Initiative accounts for nearly 70 percent of all paid internship program hires. Scholars are projected to have earned a total of \$2.1 million in revenue through the summer of 2019.

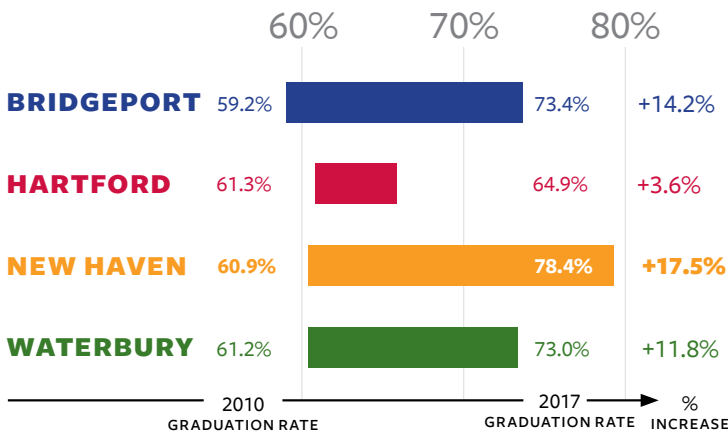
## NEW HAVEN PUBLIC SCHOOL ENROLLMENT IS AT A 50-YEAR HIGH!\*

Enrollment trends include traditional public schools and charters

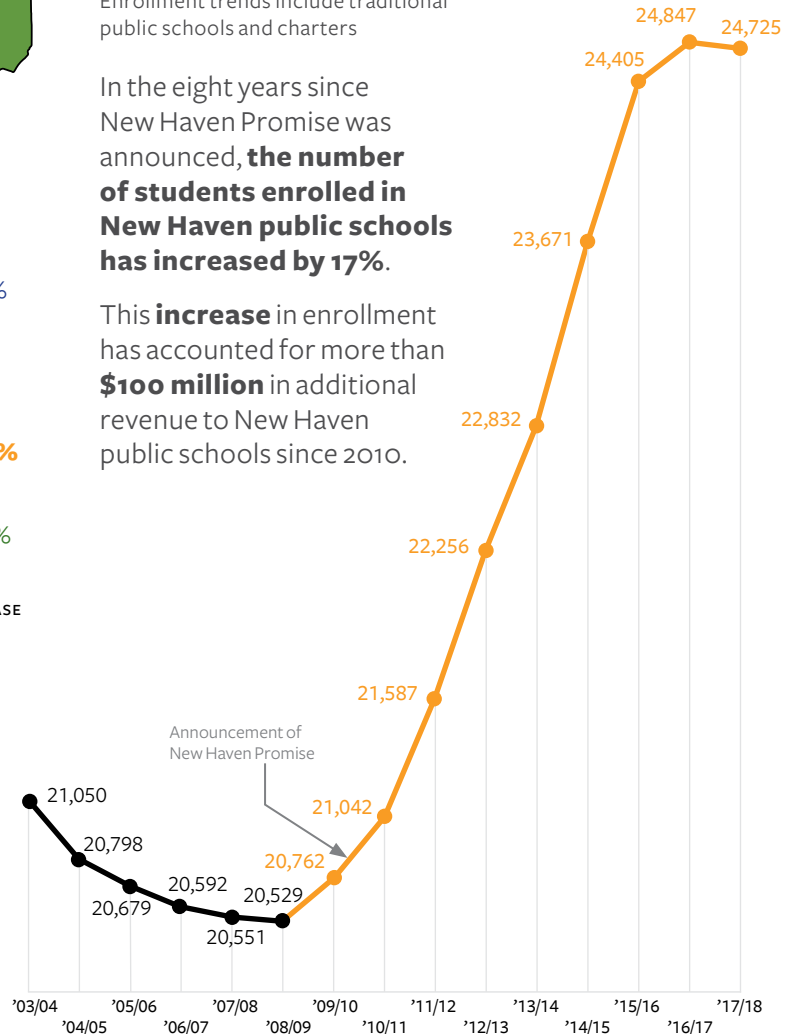
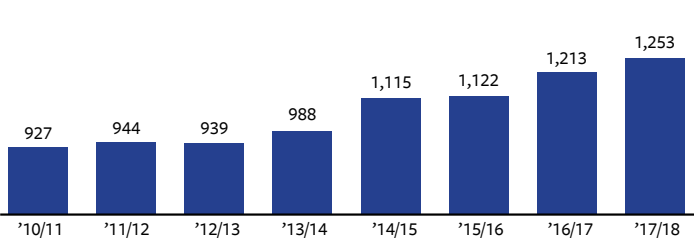
In the eight years since New Haven Promise was announced, **the number of students enrolled in New Haven public schools has increased by 17%.**

This **increase** in enrollment has accounted for more than **\$100 million** in additional revenue to New Haven public schools since 2010.

## NEW HAVEN LEADS AMONG PEERS IN BLACK & HISPANIC GRADUATION RATES 2010–2017\*



## GROWTH IN NEW HAVEN PUBLIC SCHOOL GRADUATES\*



\*Traditional public school districts, not including charters.

# NEW HAVEN PROMISE RELEASES GRADUATION RATES; ANNOUNCES “STRIVE FOR 75”

For the first time New Haven Promise is releasing a broad report on the college graduation performance of its first four classes. And that graduation rate — which tops 65 percent for students who attended four-year colleges — outpaces national rates in every measure.

“This study is not comprised of a small, potentially anomalous, number of students,” said Promise President Patricia Melton. “This includes more than 500 students over four years who have paved the way for those who follow. Virtually every segment of students — disaggregated by high school completion year, race, gender, household income or parent education — sees a graduation rate above 60 percent.”

Applying National Center for Education Statistics data to correspond to the race and gender makeup of the New Haven Promise student body yields an expected graduation rate of 50 percent. The latest number from the National Center for Education Statistics, the high school graduates from the Class of 2010, shows that the national six-year graduation rate is 60 percent.

But Promise officials believe that these rates should continue to improve. Melton has announced a new “Strive For 75” initiative, a data-driven mission to create and expand supports to allow for even more students to complete their college degree.

“In addition to our work being guided to even further bolster completion rates, we are releasing data that will allow both high schools and colleges to understand their roles in these rates,” said Melton. “We are also engaging with civic, education and business leaders in New Haven to create even more incentives for our students to not only graduate, but to do so in as little time — and with as little debt — as possible.”

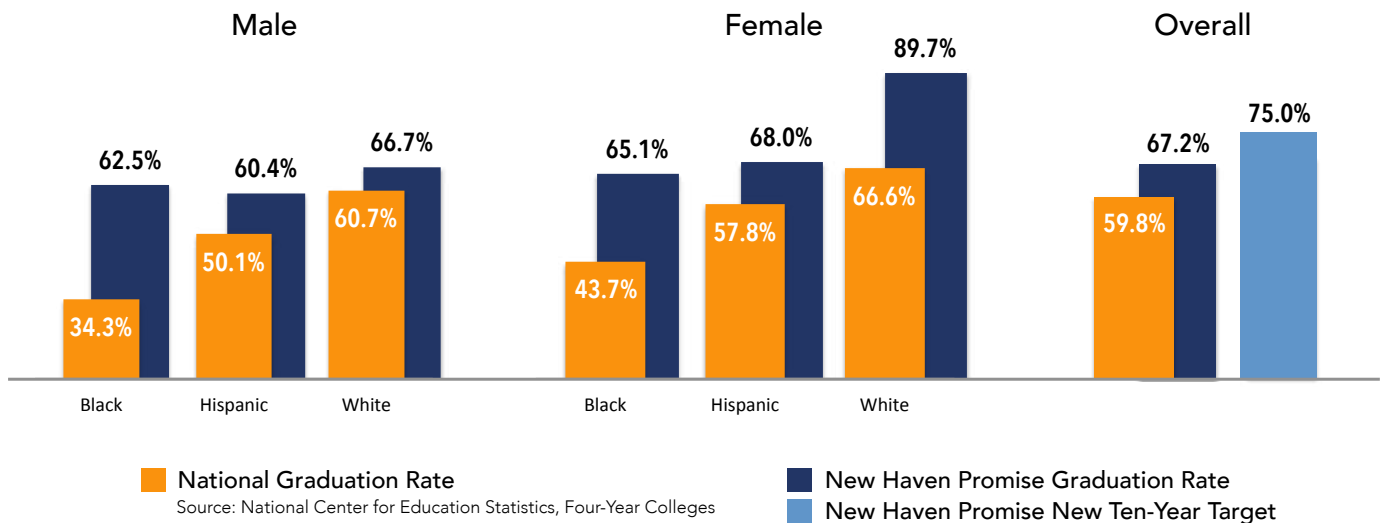
Some of the data that the report yielded:

- Of those who were funded by the Promise scholarship — which now represents about a third of the resident public school students — 88 percent attended a four-year college.
- All of the first four-year college cohorts exceeded (or are expected to exceed, in the case of 2014) a graduation rate of more than 65 percent.
- More than 60 percent of those who earned four-year degrees did so within four years of graduating from high school.

- African-American students, who comprise nearly half of the students who attended four-year colleges, graduated at a rate of 64 percent — more than 20 points higher than national average (39.7%).
- More than half of the Hispanic students who attended a community college on a Promise scholarship earned either an Associates or Bachelors degree.
- Students from the lowest household income band (under \$30,000) — the largest segment of Promise scholars — graduated at a rate of 63 percent.
- Seventy percent of the Scholars who enrolled at a four-year institution were first-generation to college and that group graduated at 63 percent.
- Students attending in-state four-year public universities graduated at a higher rate (68.8%) than those who attended private institutions (65.0%).
- In terms of the college graduation rates, New Haven Academy led the way among the high schools with a rate of 96 percent, followed by Hill Career Regional (80.2%). Wilbur Cross has provided the most number of bachelor’s degrees (75).
- The neighborhoods targeted by the Yale Community Hiring Initiative — in an effort to address particular persistent economic challenges — produced nearly half of the bachelor’s degrees as those students graduated at a higher rate (69.0%) than those from non-target neighborhoods (65.5%).

Graduation rates are typically considered within a six-year span, which means it is too early to assess the high school class of 2015 and beyond, but Promise has already confirmed that more than 40 percent of all 2015 students who have been funded, even for a single semester, at a four-year university have earned their bachelors degree in just eight semesters.

A 2010 study — conducted by P20 WIN, which utilizes a vast collection of statewide data — showed that 163 public school students from New Haven’s high school class of 2004 earned a bachelor’s degree in six years. Using recent data, Promise is forecasting that nearly 400 public school students from recent annual graduating classes will earn a four-year degree.



# COLLEGE GRADUATION RATES BY HIGH SCHOOL COHORT

## STUDENTS FUNDED AT FOUR-YEAR COLLEGES

Cohort	ATTENDEES		BACHELORS DEGREES					YET TO TIME OUT			OTHERS	
	Total	Share	On-Time	4 to 6	After 6	Total	Rate	Within 6	Total	Rate	Assoc	None
2011	96	19.2%	43	17	3	63	65.6%	—	63	65.6%	3	30
2012	111	22.2%	43	32	2	77	69.4%	—	77	69.4%	6	28
2013	134	26.8%	53	38	—	91	67.9%	—	91	67.9%	2	41
2014	159	31.8%	63	31	—	94	59.1%	11	105	66.0%	5	49
<b>TOTAL</b>	500	100.0%	202	118	5	325	65.0%	11	336	67.2%	16	148

## STUDENTS FUNDED ONLY AT TWO-YEAR COLLEGES

Cohort	ATTENDEES		ASSOCIATES DEGREES				OTHERS	
	Total	Share	On-Time	Extra	Total	Rate	Bach	None
2011	17	24.6%	0	4	4	23.5%	0	13
2012	20	29.0%	0	7	7	35.0%	2	11
2013	18	26.1%	0	4	4	22.2%	0	14
2014	14	20.3%	0	1	1	7.1%	0	13
<b>TOTAL</b>	69	100.0%	0	16	16	23.2%	2	53

### THOSE FUNDED AT 2- AND 4-YEAR COLLEGES

FUNDED AT 4 YEAR			EVER FUNDED AT 2 YEAR		
No	Assoc	BA	No	Degree	Rate
9	2	3	26	9	34.6%
11	3	4	31	16	51.6%
6	1	1	24	6	25.0%
8	4	2	22	7	31.8%
34	10	10	103	38	36.9%

## ALL STUDENTS FUNDED

Cohort	FUNDED		DEGREE EARNERS				YET TO TIME OUT			
	Total	Share	Bach	Assoc	Total	Rate	Within 6	Total	Rate	None
2011	113	19.9%	63	7	70	61.9%	—	70	61.9%	43
2012	131	23.0%	79	12	91	69.5%	—	91	69.5%	40
2013	152	26.7%	91	6	97	63.8%	—	97	63.8%	55
2014	173	30.4%	94	6	100	57.8%	11	111	64.2%	62
<b>TOTAL</b>	569	100.0%	327	31	358	62.9%	11	369	64.9%	200



Odia Kane (UConn '19)



Mi-Cha-El West (Western Connecticut State '19)

# COLLEGE GRADUATION RATES BY RACE

## STUDENTS FUNDED AT FOUR-YEAR COLLEGES

Segment	ATTENDEES		BACHELORS DEGREES					YET TO TIME OUT			OTHERS	
	Total	Share	On-Time	4 to 6	After 6	Total	Rate	Within 6	Total	Rate	Assoc	None
Black	244	48.8%	87	62	1	150	61.5%	7	157	64.3%	6	81
Hispanic	156	31.2%	69	28	3	100	64.1%	2	102	65.4%	8	46
White	69	13.8%	33	20	1	54	78.3%	1	55	79.7%	0	14
Asian	22	4.4%	10	7	0	17	77.3%	1	18	81.8%	1	3
Other	9	1.8%	3	1	0	4	44.4%	0	4	44.4%	1	4
<b>TOTAL</b>	<b>500</b>	<b>100.0%</b>	<b>202</b>	<b>118</b>	<b>5</b>	<b>325</b>	<b>65.0%</b>	<b>11</b>	<b>336</b>	<b>67.2%</b>	<b>16</b>	<b>148</b>

## STUDENTS FUNDED ONLY AT TWO-YEAR COLLEGES

Segment	ATTENDEES		ASSOCIATES DEGREES				OTHERS	
	Total	Share	On-Time	Extra	Total	Rate	Bach	None
Black	26	37.7%	0	4	4	15.4%	1	21
Hispanic	34	49.3%	0	12	12	35.3%	1	21
White	7	10.1%	0	0	0	0.0%	0	7
Asian	0	0.0%	0	0	0	0.0%	0	0
Other	2	2.9%	0	0	0	0.0%	0	2
<b>TOTAL</b>	<b>69</b>	<b>100.0%</b>	<b>0</b>	<b>16</b>	<b>16</b>	<b>23.2%</b>	<b>2</b>	<b>53</b>

## THOSE FUNDED AT 2- AND 4-YEAR COLLEGES

FUNDED AT 4 YEAR			EVER FUNDED AT 2 YEAR		
No	Assoc	BA	No	Degree	Rate
14	2	3	40	10	38.5%
13	7	4	47	24	51.1%
4	0	3	11	3	27.3%
1	0	0	1	0	0.0%
2	1	0	4	1	25.0%
<b>34</b>	<b>10</b>	<b>10</b>	<b>103</b>	<b>38</b>	<b>36.9%</b>

## ALL STUDENTS FUNDED

Segment	FUNDED		DEGREE EARNERS				YET TO TIME OUT			
	Total	Share	Bach	Assoc	Total	Rate	Within 6	Total	Rate	None
Black	270	47.5%	151	10	161	59.6%	7	168	62.2%	104
Hispanic	190	33.4%	101	19	120	63.2%	2	122	64.2%	68
White	76	13.4%	54	0	54	71.1%	1	55	72.4%	21
Asian	22	3.9%	17	1	18	81.8%	1	19	86.4%	3
Other	11	1.9%	4	1	5	45.5%	0	5	45.5%	6
<b>TOTAL</b>	<b>569</b>	<b>100.0%</b>	<b>327</b>	<b>31</b>	<b>358</b>	<b>62.9%</b>	<b>11</b>	<b>369</b>	<b>64.9%</b>	<b>200</b>



Nikime Headley (Quinnipiac '18)



Aaron Berkowitz (Southern Connecticut State '15)

# MALE COLLEGE GRADUATION RATES

## MALES FUNDED AT FOUR-YEAR COLLEGES

Segment	ATTENDEES		BACHELORS DEGREES					YET TO TIME OUT			OTHERS	
	Total	Share	On-Time	4 to 6	After 6	Total	Rate	Within 6	Total	Rate	Assoc	None
Black	72	14.4%	21	20	0	41	56.9%	4	45	62.5%	3	24
Hispanic	53	10.6%	22	9	0	31	58.5%	1	32	60.4%	4	17
White	30	6.0%	13	7	0	20	66.7%	0	20	66.7%	0	10
Asian	14	2.8%	8	4	0	12	85.7%	1	13	92.9%	1	0
Other	2	0.4%	0	0	0	0	0.0%	0	0	0.0%	0	2
<b>TOTAL</b>	<b>171</b>	<b>34.2%</b>	<b>64</b>	<b>40</b>	<b>0</b>	<b>104</b>	<b>60.8%</b>	<b>6</b>	<b>110</b>	<b>64.3%</b>	<b>8</b>	<b>53</b>

## MALES FUNDED ONLY AT TWO-YEAR COLLEGES

Segment	ATTENDEES		ASSOCIATES DEGREES				OTHERS	
	Total	Share	On-Time	Extra	Total	Rate	Bach	None
Black	5	7.2%	0	1	1	20.0%	0	4
Hispanic	13	18.8%	0	0	0	0.0%	0	13
White	4	5.8%	0	0	0	0.0%	0	4
Asian	0	0.0%	0	0	0	0.0%	0	0
Other	0	0.0%	0	0	0	0.0%	0	0
<b>TOTAL</b>	<b>22</b>	<b>31.9%</b>	<b>0</b>	<b>1</b>	<b>1</b>	<b>4.5%</b>	<b>0</b>	<b>21</b>

## THOSE FUNDED AT 2- AND 4-YEAR COLLEGES

FUNDED AT 4 YEAR			EVER FUNDED AT 2 YEAR		
No	Assoc	BA	No	Degree	Rate
4	1	0	9	2	40.0%
6	4	1	19	5	26.3%
1	0	1	5	1	20.0%
0	0	0	0	0	0.0%
1	0	0	1	0	0.0%
<b>12</b>	<b>5</b>	<b>2</b>	<b>34</b>	<b>8</b>	<b>23.5%</b>

## ALL MALES FUNDED

Segment	FUNDED		DEGREE EARNERS				YET TO TIME OUT			
	Total	Share	Bach	Assoc	Total	Rate	Within 6	Total	Rate	None
Black	77	13.5%	41	4	45	58.4%	4	49	63.6%	28
Hispanic	66	11.6%	31	4	35	53.0%	1	36	54.5%	30
White	34	6.0%	20	0	20	58.8%	0	20	58.8%	14
Asian	14	2.5%	12	1	13	92.9%	1	14	100.0%	0
Other	2	0.4%	0	0	0	0.0%	0	0	0.0%	2
<b>TOTAL</b>	<b>193</b>	<b>33.9%</b>	<b>104</b>	<b>9</b>	<b>113</b>	<b>58.5%</b>	<b>6</b>	<b>119</b>	<b>61.7%</b>	<b>74</b>



Lawrence McGill (Eastern Connecticut State '17)



Spencer Munroe (Yale '18)

# FEMALE COLLEGE GRADUATION RATES

## FEMALES FUNDED AT FOUR-YEAR COLLEGES

Segment	ATTENDEES		BACHELORS DEGREES					YET TO TIME OUT			OTHERS	
	Total	Share	On-Time	4 to 6	After 6	Total	Rate	Within 6	Total	Rate	Assoc	None
Black	172	34.4%	66	42	1	109	63.4%	3	112	65.1%	3	57
Hispanic	103	20.6%	47	19	3	69	67.0%	1	70	68.0%	4	29
White	39	7.8%	20	13	1	34	87.2%	1	35	89.7%	0	4
Asian	8	1.6%	2	3	0	5	62.5%	0	5	62.5%	0	3
Other	7	1.4%	3	1	0	4	57.1%	0	4	57.1%	1	2
<b>TOTAL</b>	<b>329</b>	<b>65.8%</b>	<b>138</b>	<b>78</b>	<b>5</b>	<b>221</b>	<b>67.2%</b>	<b>5</b>	<b>226</b>	<b>68.7%</b>	<b>8</b>	<b>95</b>

## FEMALES FUNDED ONLY AT TWO-YEAR COLLEGES

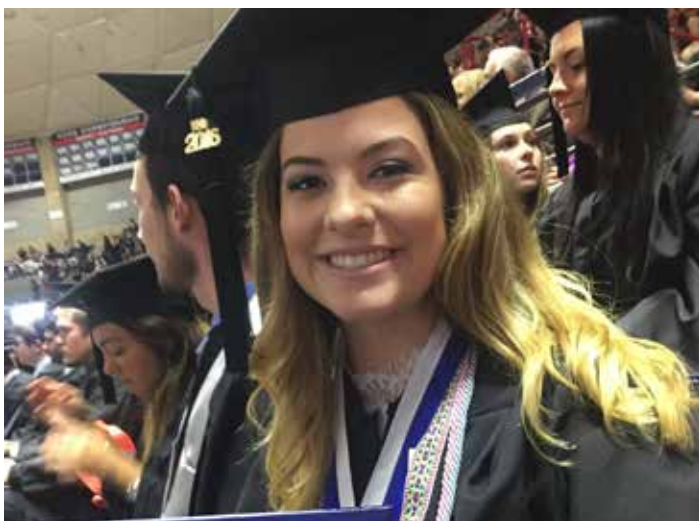
Segment	ATTENDEES		ASSOCIATES DEGREES				OTHERS	
	Total	Share	On-Time	Extra	Total	Rate	Bach	None
Black	21	30.4%	0	3	3	14.3%	1	17
Hispanic	21	30.4%	0	12	12	57.1%	1	8
White	3	4.3%	0	0	0	0.0%	0	3
Asian	0	0.0%	0	0	0	0.0%	0	0
Other	2	2.9%	0	0	0	0.0%	0	2
<b>TOTAL</b>	<b>47</b>	<b>68.1%</b>	<b>0</b>	<b>15</b>	<b>15</b>	<b>31.9%</b>	<b>2</b>	<b>30</b>

## THOSE FUNDED AT 2- AND 4-YEAR COLLEGES

FUNDED AT 4 YEAR			EVER FUNDED AT 2 YEAR		
No	Assoc	BA	No	Degree	Rate
10	1	3	31	8	25.8%
7	3	3	28	19	67.9%
3	0	2	6	2	33.3%
1	0	0	1	0	0.0%
1	1	0	3	1	33.3%
<b>22</b>	<b>5</b>	<b>8</b>	<b>69</b>	<b>30</b>	<b>43.5%</b>

## ALL FEMALES FUNDED

Segment	FUNDED		DEGREE EARNERS				YET TO TIME OUT			
	Total	Share	Bach	Assoc	Total	Rate	Within 6	Total	Rate	None
Black	193	33.9%	110	6	116	60.1%	3	119	61.7%	74
Hispanic	124	21.8%	70	15	85	68.5%	1	86	69.4%	38
White	42	7.4%	34	0	34	81.0%	1	35	83.3%	7
Asian	8	1.4%	5	0	5	62.5%	0	5	62.5%	3
Other	9	1.6%	4	1	5	55.6%	0	5	55.6%	4
<b>TOTAL</b>	<b>376</b>	<b>66.1%</b>	<b>223</b>	<b>22</b>	<b>245</b>	<b>65.2%</b>	<b>5</b>	<b>250</b>	<b>66.5%</b>	<b>126</b>



Melissa Gargano (UConn '16)



Jorgieliz Casanova (Albertus Magnus '17)



# COLLEGE GRADUATION RATES BY HOUSEHOLD INCOME

## STUDENTS FUNDED AT FOUR-YEAR COLLEGES

Segment	ATTENDEES		BACHELORS DEGREES					YET TO TIME OUT			OTHERS	
	Total	Share	On-Time	4 to 6	After 6	Total	Rate	Within 6	Total	Rate	Assoc	None
Under \$30k	169	33.8%	68	37	0	105	62.1%	1	106	62.7%	8	55
\$30k-\$60k	134	26.8%	45	40	1	86	64.2%	6	92	68.9%	3	39
\$60k-\$90k	59	11.8%	25	18	0	43	72.9%	0	43	72.9%	1	15
Over \$90k	42	8.4%	21	7	0	28	66.7%	4	32	76.2%	1	9
Unknown	96	19.2%	43	16	4	63	65.6%	0	63	65.6%	3	30
<b>TOTAL</b>	<b>500</b>	<b>100.0%</b>	<b>202</b>	<b>118</b>	<b>5</b>	<b>325</b>	<b>65.0%</b>	<b>11</b>	<b>336</b>	<b>67.2%</b>	<b>16</b>	<b>148</b>

## STUDENTS FUNDED ONLY AT TWO-YEAR COLLEGES

Segment	ATTENDEES		ASSOCIATES DEGREES				OTHERS	
	Total	Share	On-Time	Extra	Total	Rate	Bach	None
Under \$30k	32	46.4%	0	10	10	31.3%	1	21
\$30k-\$60k	13	18.8%	0	3	3	23.1%	1	9
\$60k-\$90k	3	4.3%	0	0	0	0.0%	0	3
Over \$90k	1	1.4%	0	0	0	0.0%	0	1
Unknown	20	29.0%	0	3	3	15.0%	0	17
<b>TOTAL</b>	<b>69</b>	<b>100.0%</b>	<b>0</b>	<b>16</b>	<b>16</b>	<b>23.2%</b>	<b>2</b>	<b>51</b>

## THOSE FUNDED AT 2- AND 4-YEAR COLLEGES

FUNDED AT 4 YEAR			EVER FUNDED AT 2 YEAR		
No	Assoc	BA	No	Degree	Rate
12	5	2	44	18	40.9%
8	2	1	21	7	33.3%
3	0	2	6	2	33.3%
1	1	0	2	1	50.0%
10	2	5	30	10	33.3%
34	10	10	103	38	36.9%

## ALL STUDENTS FUNDED

Segment	FUNDED		DEGREE EARNERS				YET TO TIME OUT			
	Total	Share	Bach	Assoc	Total	Rate	Within 6	Total	Rate	None
Under \$30k	201	35.3%	106	17	123	61.2%	1	124	61.7%	77
\$30k-\$60k	147	25.8%	87	6	93	63.3%	6	99	67.3%	48
\$60k-\$90k	62	10.9%	43	1	44	71.0%	0	44	71.0%	18
Over \$90k	43	7.6%	28	1	29	67.4%	4	33	76.7%	10
Unknown	116	20.4%	63	6	69	59.5%	0	69	59.5%	47
<b>TOTAL</b>	<b>569</b>	<b>100.0%</b>	<b>327</b>	<b>31</b>	<b>358</b>	<b>62.9%</b>	<b>11</b>	<b>369</b>	<b>64.9%</b>	<b>200</b>



Jennifer Gonzalez (Yale '18)



Kyle Kearson (UConn '16)

# COLLEGE GRADUATION RATES BY PARENT EDUCATION ATTAINMENT

## STUDENTS FUNDED AT FOUR-YEAR COLLEGES

Segment	ATTENDEES		BACHELORS DEGREES					YET TO TIME OUT			OTHERS	
	Total	Share	On-Time	4 to 6	After 6	Total	Rate	Within 6	Total	Rate	Assoc	None
High School	158	31.6%	62	37	0	99	62.7%	3	102	64.6%	8	48
Some College	128	25.6%	44	32	1	77	60.2%	2	79	61.7%	4	45
1 Graduate	73	14.6%	25	26	1	52	71.2%	6	58	79.5%	1	14
2 Graduates	33	6.6%	21	5	0	26	78.8%	0	26	78.8%	0	7
Unknown	108	21.6%	50	18	3	71	65.7%	0	71	65.7%	3	34
<b>TOTAL</b>	<b>500</b>	<b>100.0%</b>	<b>202</b>	<b>118</b>	<b>5</b>	<b>325</b>	<b>65.0%</b>	<b>11</b>	<b>336</b>	<b>67.2%</b>	<b>16</b>	<b>148</b>

## STUDENTS FUNDED ONLY AT TWO-YEAR COLLEGES

Segment	ATTENDEES		ASSOCIATES DEGREES				OTHERS	
	Total	Share	On-Time	Extra	Total	Rate	Bach	None
High School	28	40.6%	0	7	7	25.0%	2	19
Some College	16	23.2%	0	3	3	18.8%	0	13
1 Graduate	2	2.9%	0	1	1	50.0%	0	1
2 Graduates	0	0.0%	0	0	0	0.0%	0	0
Unknown	23	33.3%	0	5	5	21.7%	0	18
<b>TOTAL</b>	<b>69</b>	<b>100.0%</b>	<b>0</b>	<b>16</b>	<b>16</b>	<b>23.2%</b>	<b>2</b>	<b>51</b>

## THOSE FUNDED AT 2- AND 4-YEAR COLLEGES

FUNDED AT 4 YEAR			EVER FUNDED AT 2 YEAR		
No	Assoc	BA	No	Degree	Rate
11	5	1	39	15	38.5%
9	3	2	25	8	32.0%
3	0	2	5	3	60.0%
0	0	0	0	0	0.0%
11	2	5	34	12	35.3%
34	10	10	103	38	36.9%

## ALL STUDENTS FUNDED

Segment	FUNDED		DEGREE EARNERS				YET TO TIME OUT			
	Total	Share	Bach	Assoc	Total	Rate	Within 6	Total	Rate	None
High School	186	32.7%	101	14	115	61.8%	3	118	63.4%	68
Some College	144	25.3%	77	7	84	58.3%	2	86	59.7%	58
1 Graduate	75	13.2%	52	2	54	72.0%	6	60	80.0%	15
2 Graduates	33	5.8%	26	0	26	78.8%	0	26	78.8%	7
Unknown	131	23.0%	71	8	79	60.3%	0	79	60.3%	52
<b>TOTAL</b>	<b>569</b>	<b>100.0%</b>	<b>327</b>	<b>31</b>	<b>358</b>	<b>62.9%</b>	<b>11</b>	<b>369</b>	<b>64.9%</b>	<b>200</b>



Jordy Padilla (U. of New Haven '15)



Kaneez Anwar (Fairfield '15)

# COLLEGE GRADUATION RATES BY COLLEGE

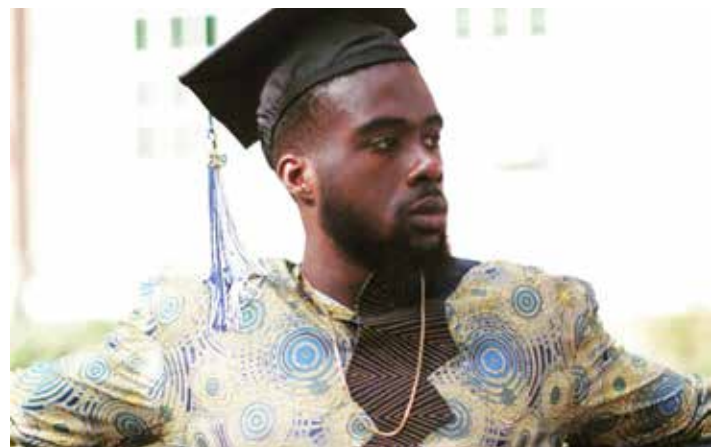
## STUDENTS FUNDED AT FOUR-YEAR COLLEGES

College	MATRICULANTS		TRANSFER		BACHELORS DEGREES						YET TO TIME OUT			OTHERS	
	Total	Share	In	Out	Att	On-Time	4 to 6	After 6	Total	Rate	Within 6	Total	Rate	Assoc	None
Albertus Magnus	17	3.4%	5	3	19	6	5	1	12	63.2%	1	13	68.4%	0	6
Bridgeport	8	1.6%	0	1	7	2	1	0	3	42.9%	1	4	57.1%	0	3
Central Connecticut	50	10.0%	0	13	37	9	11	1	21	56.8%	0	21	56.8%	0	16
Charter Oak	0	0.0%	1	0	1	0	1	0	1	100.0%	0	1	100.0%	0	0
Connecticut College	3	0.6%	0	0	3	3	0	0	3	100.0%	0	3	100.0%	0	0
Eastern Connecticut	30	6.0%	1	7	24	8	6	0	14	58.3%	0	14	58.3%	0	10
Fairfield	10	2.0%	0	2	8	4	0	0	4	50.0%	0	4	50.0%	0	4
Hartford	10	2.0%	0	1	9	3	1	0	4	44.4%	0	4	44.4%	2	3
Quinnipiac	18	3.6%	4	3	19	13	3	0	16	84.2%	0	16	84.2%	0	3
Sacred Heart	2	0.4%	0	0	2	1	0	0	1	50.0%	0	1	50.0%	0	1
Southern Connecticut	127	25.4%	29	11	145	39	60	1	100	69.0%	6	106	73.1%	4	35
St. Joseph	2	0.4%	0	1	1	0	0	0	0	0.0%	0	0	0.0%	0	1
St. Vincent's	0	0.0%	1	0	1	0	0	0	0	0.0%	0	0	0.0%	0	1
Trinity	2	0.4%	0	0	2	2	0	0	2	100.0%	0	2	100.0%	0	0
U. of Connecticut	135	27.0%	2	7	130	77	19	1	97	74.6%	3	100	76.9%	0	30
U. of New Haven	29	5.8%	3	7	25	9	5	0	14	56.0%	0	14	56.0%	0	11
Western Connecticut	26	5.2%	0	3	23	8	3	0	11	47.8%	0	11	47.8%	0	12
Wesleyan	2	0.4%	0	0	2	1	0	0	1	50.0%	0	1	50.0%	0	1
Yale	17	3.4%	0	0	17	16	0	0	16	94.1%	0	16	94.1%	0	1
Others*	12	2.4%	25	12	25	1	3	1	5	20.0%	0	5	20.0%	10	10
<b>TOTAL</b>	<b>500</b>	<b>100.0%</b>	<b>71</b>	<b>71</b>	<b>500</b>	<b>202</b>	<b>118</b>	<b>5</b>	<b>325</b>	<b>65.0%</b>	<b>11</b>	<b>336</b>	<b>67.2%</b>	<b>16</b>	<b>148</b>
<b>Public</b>	<b>368</b>	<b>73.6%</b>	<b>33</b>	<b>41</b>	<b>360</b>	<b>141</b>	<b>100</b>	<b>3</b>	<b>244</b>	<b>66.3%</b>	<b>9</b>	<b>253</b>	<b>68.8%</b>	<b>4</b>	<b>103</b>
<b>Private</b>	<b>120</b>	<b>24.0%</b>	<b>13</b>	<b>18</b>	<b>115</b>	<b>60</b>	<b>15</b>	<b>1</b>	<b>76</b>	<b>63.3%</b>	<b>2</b>	<b>78</b>	<b>65.0%</b>	<b>2</b>	<b>35</b>

\*These are scholars who were funded at a Connecticut four-year school, but either started or ended their journey elsewhere.



Jayla Manning (Southern Connecticut State '19)



Jesse Okeke (Central Connecticut State '19)

# COLLEGE GRADUATION RATES BY HIGH SCHOOL

## STUDENTS FUNDED AT FOUR-YEAR COLLEGES

High School	ATTENDEES		BACHELORS DEGREES					YET TO TIME OUT			OTHERS	
	Total	Share	On-Time	4 to 6	After 6	Total	Rate	Within 6	Total	Rate	Assoc	None
Amistad	26	5.2%	13	5	0	18	69.2%	0	18	69.2%	0	8
Hill Career Regional	86	17.2%	40	27	1	68	79.1%	1	69	80.2%	4	13
Cooperative Arts	71	14.2%	26	21	0	47	66.2%	1	48	67.6%	3	20
Common Ground	9	1.8%	4	3	0	7	77.8%	0	7	77.8%	0	2
Creed / Hyde	19	3.8%	2	5	0	7	36.8%	1	8	42.1%	2	9
Wilbur Cross	109	21.8%	52	20	2	74	67.9%	1	75	68.8%	2	32
James Hillhouse	76	15.2%	22	20	0	42	55.3%	2	44	57.9%	1	31
HS in the Community	24	4.8%	9	2	2	13	54.1%	0	13	54.1%	1	10
Metropolitan Business	31	6.2%	9	4	0	13	41.9%	2	15	48.4%	2	14
New Haven Academy	24	4.8%	15	6	0	21	87.5%	2	23	95.8%	0	1
Sound School	25	5.0%	10	5	0	15	60.0%	1	16	64.0%	1	8
<b>TOTAL</b>	<b>500</b>	<b>100.0%</b>	<b>202</b>	<b>118</b>	<b>5</b>	<b>325</b>	<b>65.0%</b>	<b>11</b>	<b>336</b>	<b>67.2%</b>	<b>16</b>	<b>148</b>

## STUDENTS FUNDED ONLY AT TWO-YEAR COLLEGES

High School	ATTENDEES		ASSOCIATES DEGREES				OTHERS	
	Total	Share	On-Time	Extra	Total	Rate	Bach	None
Amistad	0	0.0%	0	0	0	0.0%	0	0
Hill Career Regional	11	15.9%	0	3	3	27.3%	1	8
Cooperative Arts	4	5.8%	0	0	0	0.0%	0	4
Common Ground	2	2.9%	0	0	0	0.0%	0	2
Creed / Hyde	1	1.4%	0	0	0	0.0%	0	1
Wilbur Cross	12	17.4%	0	5	5	41.7%	1	6
James Hillhouse	16	23.2%	0	3	3	18.8%	0	13
HS in the Community	5	7.2%	0	1	1	20.0%	0	4
Metropolitan Business	6	8.7%	0	1	1	16.7%	0	5
New Haven Academy	3	4.3%	0	0	0	0.0%	0	3
Riverside	4	5.8%	0	0	0	0.0%	0	4
Sound School	5	7.2%	0	3	3	60.0%	0	2
<b>TOTAL</b>	<b>69</b>	<b>100.0%</b>	<b>0</b>	<b>16</b>	<b>16</b>	<b>23.2%</b>	<b>2</b>	<b>51</b>

## THOSE FUNDED AT 2- AND 4-YEAR COLLEGES

FUNDED AT 4 YEAR			EVER FUNDED AT 2 YEAR		
No	Assoc	BA	No	Degree	Rate
0	0	0	0	0	0.0%
6	3	2	17	9	52.9%
5	1	1	9	2	22.2%
1	0	1	3	1	33.3%
3	1	1	4	2	50.0%
6	1	3	18	10	55.6%
5	1	1	21	5	23.8%
3	0	1	8	2	25.0%
4	2	0	10	3	30.0%
0	0	0	3	0	0.0%
0	0	0	4	0	0.0%
1	1	0	6	4	66.7%
34	10	10	103	38	36.9%

## ALL STUDENTS FUNDED

High School	FUNDED		DEGREE EARNERS				YET TO TIME OUT			
	Total	Share	Bach	Assoc	Total	Rate	Within 6	Total	Rate	None
Amistad	26	4.6%	18	0	18	69.2%	0	18	69.2%	8
Hill Career Regional	97	17.0%	69	7	76	78.4%	1	77	79.4%	20
Cooperative Arts	75	13.2%	47	3	50	66.7%	1	51	68.0%	24
Common Ground	11	1.9%	7	0	7	77.8%	0	7	77.8%	4
Creed / Hyde	20	3.5%	7	2	9	45.0%	1	10	50.0%	10
Wilbur Cross	121	21.3%	75	6	81	66.9%	1	82	67.8%	39
James Hillhouse	92	16.2%	42	4	46	50.0%	2	48	52.2%	44
HS in the Community	29	5.1%	13	2	15	51.7%	0	15	51.7%	14
Metropolitan Business	37	6.5%	13	3	16	43.2%	2	18	48.6%	19
New Haven Academy	27	4.7%	21	0	21	87.5%	2	23	85.2%	4
Riverside	4	0.7%	0	0	0	0.0%	0	0	0.0%	4
Sound School	30	5.3%	15	4	19	63.3%	1	20	66.7%	10
<b>TOTAL</b>	<b>569</b>	<b>100.0%</b>	<b>327</b>	<b>31</b>	<b>358</b>	<b>62.9%</b>	<b>11</b>	<b>369</b>	<b>64.9%</b>	<b>200</b>

# COLLEGE GRADUATION RATES BY NEIGHBORHOOD

## STUDENTS FUNDED AT FOUR-YEAR COLLEGES

Neighborhood	ATTENDEES		BACHELORS DEGREES					YET TO TIME OUT			OTHERS	
	Total	Share	On-Time	4 to 6	After 6	Total	Rate	Within 6	Total	Rate	Assoc	None
Amity	20	4.0%	5	8	0	13	65.0%	1	14	70.0%	0	8
Annex	38	7.6%	16	12	1	29	76.3%	1	30	78.9%	2	6
Beaver Hills	30	6.0%	9	9	0	18	60.0%	2	20	66.7%	0	10
Dixwell •	15	3.0%	5	2	0	7	46.7%	1	8	53.3%	0	7
Downtown	5	1.0%	1	1	0	2	40.0%	0	2	40.0%	1	2
Dwight •	11	2.2%	7	1	0	8	72.7%	0	8	72.7%	0	3
East Rock	17	3.4%	9	2	0	11	64.7%	0	11	64.7%	2	4
East Shore	25	5.0%	10	6	1	17	68.0%	1	18	72.0%	0	7
Edgewood	19	3.8%	7	2	0	9	47.4%	0	9	47.4%	1	9
Fair Haven •	70	14.0%	31	20	0	51	72.9%	1	52	74.3%	2	16
Fair Haven Heights •	34	6.8%	17	5	1	23	67.6%	0	23	67.6%	1	10
Long Wharf	2	0.4%	1	0	0	1	50.0%	0	1	50.0%	0	1
Newhallville •	39	7.8%	16	11	0	27	69.2%	0	27	69.2%	0	12
Prospect Hill	9	1.8%	1	2	0	3	33.3%	1	4	44.4%	1	4
Quinnipiac Meadows	47	9.4%	17	8	1	26	55.3%	1	27	57.4%	2	18
The Hill •	46	9.2%	18	13	1	32	69.6%	0	32	69.6%	2	12
West River •	19	3.8%	7	4	0	11	57.9%	0	11	57.9%	1	7
West Rock •	8	1.6%	2	4	0	6	75.0%	0	6	75.0%	1	1
Westville	40	8.0%	22	7	0	29	72.5%	2	31	77.5%	0	9
Wooster Square	6	1.2%	1	1	0	2	33.3%	0	2	33.3%	0	4
<b>TOTAL</b>	<b>500</b>	<b>100.0%</b>	<b>202</b>	<b>118</b>	<b>5</b>	<b>325</b>	<b>65.0%</b>	<b>11</b>	<b>336</b>	<b>67.2%</b>	<b>16</b>	<b>148</b>
Target Neighborhoods	242	48.4%	103	60	2	165	68.2%	2	167	69.0%	7	68

## STUDENTS FUNDED ONLY AT TWO-YEAR COLLEGES

Neighborhood	ATTENDEES		ASSOCIATES DEGREES				OTHERS	
	Total	Share	On-Time	Extra	Total	Rate	Bach	None
Amity	0	0.0%	0	0	0	0.0%	0	0
Annex	4	5.8%	0	0	0	0.0%	0	4
Beaver Hills	4	5.8%	0	1	1	25.0%	0	3
Dixwell •	4	5.8%	0	1	1	25.0%	0	3
Downtown	0	0.0%	0	0	0	0.0%	0	0
Dwight •	2	2.9%	0	2	2	100.0%	0	0
East Rock	3	4.3%	0	0	0	0.0%	0	3
East Shore	3	4.3%	0	1	1	33.3%	0	2
Edgewood	4	5.8%	0	0	0	0.0%	0	4
Fair Haven •	12	17.4%	0	1	1	8.3%	0	11
Fair Haven Heights •	6	8.7%	0	3	3	50.0%	1	2
Newhallville •	2	2.9%	0	0	0	0.0%	0	2
Prospect Hill	2	2.9%	0	1	1	50.0%	0	1
Quinnipiac Meadows	5	7.2%	0	1	1	20.0%	0	4
The Hill •	12	17.4%	0	4	4	33.3%	1	7
West River •	2	2.9%	0	1	1	50.0%	0	1
West Rock •	2	2.9%	0	0	0	0.0%	0	2
Westville	1	1.4%	0	0	0	0.0%	0	1
Wooster Square	1	1.4%	0	0	0	0.0%	0	1
<b>TOTAL</b>	<b>69</b>	<b>100.0%</b>	<b>0</b>	<b>16</b>	<b>16</b>	<b>23.2%</b>	<b>2</b>	<b>51</b>
Target Neighborhoods	42	60.9%	0	12	12	28.6%	2	28

## THOSE FUNDED AT 2- AND 4-YEAR COLLEGES

FUNDED AT 4 YEAR			EVER FUNDED AT 2 YEAR		
No	Assoc	BA	No	Degree	Rate
1	0	1	1	1	100.0%
5	1	3	9	4	44.4%
4	0	1	8	2	25.0%
0	0	0	4	1	25.0%
1	1	0	1	1	100.0%
0	0	0	2	2	100.0%
2	1	1	5	2	40.0%
1	0	0	4	1	25.0%
2	1	0	6	1	16.7%
4	1	2	16	4	25.0%
1	1	0	7	5	71.4%
2	0	0	4	0	0.0%
1	1	0	3	2	66.7%
3	2	0	8	3	37.5%
4	1	2	16	8	50.0%
2	0	0	4	1	25.0%
0	0	0	2	0	0.0%
1	0	0	2	0	0.0%
0	0	0	1	0	0.0%
<b>34</b>	<b>10</b>	<b>10</b>	<b>103</b>	<b>38</b>	<b>36.9%</b>
<b>13</b>	<b>3</b>	<b>4</b>	<b>55</b>	<b>21</b>	<b>38.2%</b>

• The target neighborhoods have been designated as that by the Yale University Community Hiring Initiative in an effort to address particular persistent economic challenges.

# COLLEGE GRADUATION RATES BY NEIGHBORHOOD

## ALL STUDENTS FUNDED

Neighborhood	FUNDED		DEGREE EARNERS				YET TO TIME OUT			None
	Total	Share	Bach	Assoc	Total	Rate	Within 6	Total	Rate	
Amity	20	3.5%	13	0	13	65.0%	1	14	70.0%	6
Annex	42	7.4%	29	2	31	73.8%	1	32	76.2%	10
Beaver Hills	34	6.0%	18	1	19	55.9%	2	21	61.8%	13
Dixwell •	19	3.3%	7	1	8	42.1%	1	9	47.4%	10
Downtown	5	0.9%	2	1	3	60.0%	0	3	60.0%	2
Dwight •	13	2.3%	8	2	10	76.9%	0	10	76.9%	3
East Rock	20	3.5%	11	2	13	65.0%	0	13	65.0%	7
East Shore	28	4.9%	17	1	18	64.3%	1	19	67.9%	9
Edgewood	23	4.0%	9	1	10	43.5%	0	10	43.5%	13
Fair Haven •	82	14.4%	51	3	54	65.9%	1	55	67.1%	27
Fair Haven Heights •	40	7.0%	24	3	27	67.5%	0	27	67.5%	13
Long Wharf	2	0.4%	1	0	1	50.0%	0	1	50.0%	1
Newhallville •	41	7.2%	27	0	27	65.9%	0	27	65.9%	14
Prospect Hill	11	1.9%	3	2	5	45.5%	1	6	54.5%	5
Quinnipiac Meadows	52	9.1%	26	3	29	55.8%	1	30	57.7%	22
The Hill •	58	10.2%	33	6	39	67.2%	0	39	67.2%	19
West River •	21	3.7%	11	2	13	61.9%	0	13	61.9%	8
West Rock •	10	1.8%	6	1	7	70.0%	0	7	70.0%	3
Westville	41	7.2%	29	0	29	70.7%	2	31	75.6%	10
Wooster Square	7	1.2%	2	0	2	28.6%	0	2	28.6%	5
<b>TOTAL</b>	<b>569</b>	<b>100.0%</b>	<b>327</b>	<b>31</b>	<b>358</b>	<b>62.9%</b>	<b>11</b>	<b>369</b>	<b>64.9%</b>	<b>200</b>
Target Neighborhoods	284	49.9%	167	18	185	65.1%	2	187	65.8%	97

• The target neighborhoods have been designated as that by the Yale University Community Hiring Initiative in an effort to address particular persistent economic challenges.



Stephanie Galindo (Quinnipiac '18)



Rolando Galindo (Southern Connecticut State '19)