

Prophet '08 PlugSE™ Editor



SoundTower PlugSE™ for Prophet '08 Synthesizer

VST (PC/Mac)
AudioUnits (Mac)



SoundEditor, PlugSE™, and iPad Products
Reach Inside...

© SoundTower Inc. 2012

www.soundtower.com

Special Thanks to...

Kris Gorzelnik

Mark Lanoszka

Laurent Thompson

Chancey A. Truman

Table of Contents

Installation	2
VST/Audio Units	2
Mac OSX Users.....	2
Authorization	2
Older versions of Cubase	2
Configure MIDI	3
MIDI FILTERS	3
Confirm Connections and Test	3
Editor/Hardware Interaction	3
Record/Playback MIDI Data.....	4
Record/Playback Automation Data.....	4
Prophet '08 PlugSE™ Operation	4
Parameter Panel	4
BANKS.....	5
Use Loaded Data.....	5
FILE.....	5
MIDI	5
PRESETS	5
FILE.....	5
EDIT	6
MIDI.....	6
LATENCY and DELAY.....	6
Host.....	6
Send	7
Receive.....	7
WRITE	7
PIANO.....	7
Additional features of the Parameter Panel	8
LCD Screen.....	8
SEQUENCER.....	9
SEQUENCER EDITING	11
Finale	12

Welcome!

Thanks for purchasing the SoundTower Prophet '08 PlugSE™ for the Prophet '08 synth from Dave Smith Instruments.

This proprietary plug-in is installed in your audio software as a Virtual Instrument (VST Instrument or AudioUnits) and will control all of the functions found on the Prophet '08.

Stunning graphics, intuitive functions and easy-to-use menus make tweaking the Prophet '08 hardware fun and easy.

Most importantly is the ability to automate every function of the hardware synth for synchronized playback with your session. Adjusting the timing and the values of all automation data allows you to perfect the performance prior to committing the audio to disk.

The Prophet '08 PlugSE™ Editor features:

- Editing of all Prophet '08 program parameters.
- Automation of all Prophet '08 panel parameters.
- Direct MIDI connection.
- Fully re-sizable editing panels.
- Load/Save of Program Banks.
- Transmitting and receiving of Program Bank data.
- Full Prophet '08 System Exclusive implementation.
- Flexible routings of parameter changes (Automation parameters and MIDI tracks.)
- Recording of real-time parameter changes using automation or MIDI continuous controllers.

The Editor works with any Digital Audio Workstation (DAW) or audio software that supports VST or AudioUnits (AU) plug-ins. These include, but are not limited to Cubase, Nuendo, Ableton, Digital Performer, Logic and many others.

Real Time AudioSuite (RTAS) users:

The Prophet '08 PlugSE™ Editor has not been tested with VST-to-RTAS wrappers, and may not work in this configuration. An RTAS version of the Prophet '08 PlugSE™ Editor is currently in development.

Installation

VST/Audio Units

Download the version of the Prophet '08 PlugSE™ Editor required for your computer platform (PC/MAC) and audio workstation (VST/AU). Downloads are available from:

<http://www.soundtower.com/PlugSE>

The Prophet '08 Editor plug-in will run free of charge in demo mode.

Once you download and decompress the .zip file, you will have a .dll file for PC VST.

Various DAWs have different requirements for the installation of plug-ins. Many systems have a plug-in folder in the same root folder as the application. Some have plug-in folders that are in a more generic location so multiple applications can share the same plug-ins. Refer to your DAW User Manual for the appropriate installation of the PlugSE™ Editor.

Mac OSX Users

Once the .zip file is downloaded and decompressed, you will have an .mpkg file. Double-click on it and it will launch the Installer that will guide you through the simple installation process.

In case you need to move or copy the PlugSE™ files, you need to know where they are located. The .vst file for Mac VST is in user/Library/Audio/Plug-Ins/VST and the .component file for Mac AudioUnits is in user/Library/Audio/Plug-Ins/Components.

For Mac users running Lion, you will discover that the user Library folder is hidden. To access this folder, hold the Option key while selecting the Go menu from the Finder.

Authorization

With the plug-in properly installed, open your DAW and prepare a track in the same way you would to use any other virtual instrument. Select "Prophet '08 PlugSE™".

Upon opening the PlugSE™ Editor for the first time you will be presented with a screen that gives you the opportunity to authorize your plug-in. If you've already registered the plug-in, enter your name and registration code exactly as indicated. If you haven't yet registered, or simply wish to check out the PlugSE™ Editor, select "DEMO" and you will run in demo mode with a restricted features set.

The demo limitations are:

- No file saving.
- No writing to the Prophet.
- No preset transmitting to the Prophet.
- Parameter changes are enabled only for: Oscillator 1 Frequency, Oscillator 1 Fine Tune, Oscillator 1 ShapePW, Oscillator 1 Level and Oscillator 1 Glide.

Once you have authorized or selected demo mode, the main PlugSE™ screen will appear.

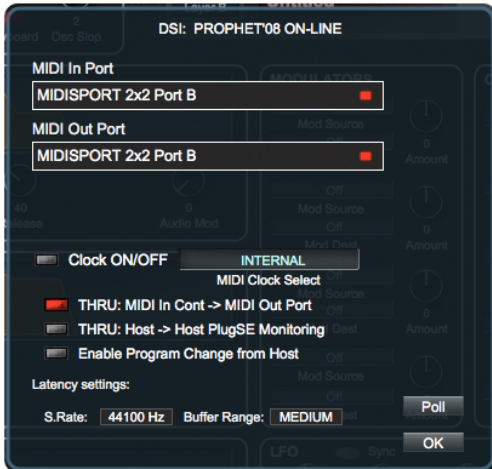
Older versions of Cubase

Some older versions of Cubase will not allow you to type your name and number in the registration window. This is a limitation of Cubase. A work-around here involves using a word processor or text editor to enter the information. Type in your name, highlight it, copy it to the clipboard, return to the Editor registration window and paste the information into the Name field by right clicking the mouse and selecting 'Paste'. Repeat this process for the registration code.

Configure MIDI

It isn't practical to provide specific instruction in this document to cover all the possible MIDI interfaces or configurations that are available. We will show an example of a typical MIDI configuration using a MIDISPORT 2x2 MIDI interface.

NOTE: If you create a new MIDI track, the Prophet '08 should appear as a possible input and output for MIDI communication.



Click the **MIDI** button at the top of the Editor window. Select the MIDI interface and port that the Prophet '08 is connected to. Be sure your MIDI input and output cables are correct. Once you have selected the appropriate input and output ports, click the Poll button. An 'ON-LINE' message will appear at the top of this window confirming proper connection.

MIDI FILTERS

- **THRU: Host -> MIDI Out Port**

It enables to thru MIDI notes, continuous controller data, pitch bend, aftertouch etc. to be passed to the MIDI port to which the Prophet '08 is connected.

- **THRU: MIDI In Port -> Host**

Many Prophet '08 programs are set to send notes and other MIDI data generated by the 16-step Sequencer through the Prophet '08's MIDI Out port. This feature was initially intended for Prophet '08 to play other external MIDI devices, however when used in connection with the PlugSE™ it may cause a MIDI loop. In order to prevent MIDI loops this option should be set to OFF.

- **THRU: Host->Host PlugSE Monitoring**

This feature allows for the MIDI signal coming from the PlugSE™ track to be bounced to another host track.

- **Enable Program Change from Host**

If enabled, any program/bank change commands will be passed over from host to the Prophet '08 resulting in a program change.

For information about additional features found in MIDI Configuration panel please see **MIDI** section below.

Confirm Connections and Test

Editor/Hardware Interaction

Confirm that changes made using the PlugSE™ Editor affect the Prophet '08 by adjusting a few controls in the Editor window; these changes should be reflected on the Prophet '08 hardware.

Record/Playback MIDI Data

Create a new MIDI track in your DAW. Select the MIDI interface port that the Prophet '08 is connected to as your MIDI destination. Record and playback a few test notes.

Record/Playback Automation Data

Test the writing and reading automation data as you would any other VI in your software. Enable the track to 'Write', start playback and tweak some controls on the PlugSE™ Editor or twist some data controls on the Prophet '08. Rewind, put the automation track into 'Read' and start playback and confirm that automation data is communicating with the Prophet '08.

Prophet '08 PlugSE™ Operation

The Prophet '08 PlugSE™ allows to you 'reach inside' the Prophet '08 with total control of all the functions built into the instrument – not only the front panel controls, but also the 'hidden' functions found in the Prophet '08 menus.

Parameter Panel



The Prophet '08 PlugSE™ Editor displays a faithful reproduction of the Prophet '08's front panel. Every knob, switch, and rotary control is exactly as you would find it on the Prophet '08, and all Editor controls are interactive and functional. Changes made anywhere on this panel will cause corresponding changes to be made on the Prophet '08 hardware, and also sent to the DAW (host) automation while recording.

At the top of the Parameter Panel window are a series of buttons that select functions or display drop down menus. From left to right: BANKS, FILE, EDIT, MIDI, HOST, Send, Receive, WRITE, and PIANO. A description of each button appears below.

BANKS

Click on the **BANKS** button and the Parameter Panel splits into two sections: a reduced panel view on the right-hand side, and a new view containing a scrollable list of program banks on the left-hand side. There are two banks with 128 programs in each bank (arranged just like the two banks in the Prophet '08), and each bank entry contains both a program name and its corresponding sound category.

Click the A or B buttons to select the desired bank, and then use the scroll bar on the right to scroll through the list (you can also scroll through the list using the wheel on your mouse, if so equipped). Simply select a bank you wish to explore and click on a Program name you wish to recall. The selected program will appear in the Parameter Panel window.

Right clicking on any Program name within any bank will open a window that will allow you to COPY that program to the clipboard, SAVE the program to disk or LOAD a program from a disk into this location.

The **CATEGORY** button will present you with a list of 23 categories from which to select a specific type of sound program. This method makes it easy to quickly identify a desired program. Simply select a category from the list and a specific group of the available sounds from all banks will appear. If you wish to change the category of any sound, right click on the Category name (beside the Program name) and select a new category from the displayed list.

Now let's take a look at the buttons that appear at the top of the BANK window.

Use Loaded Data

When **Use Loaded Data** is enabled, any program that is selected in the BANKS window will also be sent to the Prophet '08's EDIT buffer, where it can be auditioned. Note that this does not overwrite the program that is stored at the Prophet '08's currently selected location. If you wish to write the program to the Prophet '08, use the **WRITE** button (described below).

FILE

FILE opens a dialog window that allows you to LOAD a previously saved Program Bank into the currently selected Program Bank, or SAVE the current Program Bank to a hard drive.

MIDI

MIDI gives you a number of options for sending and receiving full banks of sounds to and from the Prophet '08. You have the option to Receive Program Bank A or B, Receive All Banks, Transmit Program Bank A or B, or Transmit All Banks. Clicking any of these options will begin the operation and present you with a progress bar indicating the current status of the transfer.

PRESETS

PRESETS opens a menu that allows you to reset any of the banks back to the factory programs. Note that this only loads the data into the Editor, not to the Prophet '08. If you wish to send the banks to the Prophet '08, use the commands in the **MIDI** menu. To recall a bank of factory sounds, click **PRESETS** and select bank A or B in the Factory Presets window. You can also INITIALIZE a program bank from this menu.

To close the Bank window, click on the OK button.

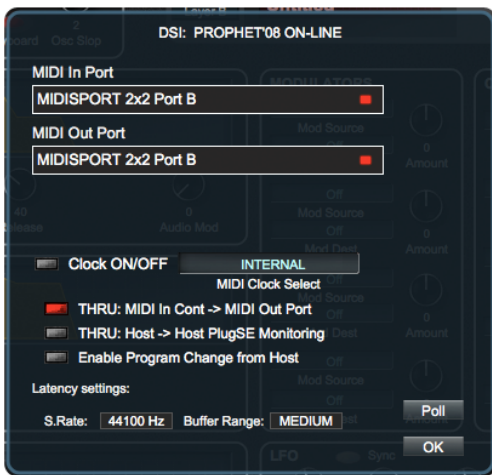
FILE

The **FILE** button appears next to the BANKS button at the top of the Editor window. **FILE** produces a menu that allows you to Load a Single Program, Save Preset to save the current Program or select About. Clicking on the About option produces a splash screen showing the version number and registration information (if the product has been registered).

EDIT

EDIT provide a menu allows you to copy and paste the current program to a different location.

MIDI



Although the main function of the **MIDI** button was covered above in the MIDI Configuration section, there are more features that can be adjusted in the MIDI Configuration panel.

When enabled, the **Clock ON/OFF** button synchronizes the EDITOR with the host MIDI clock.

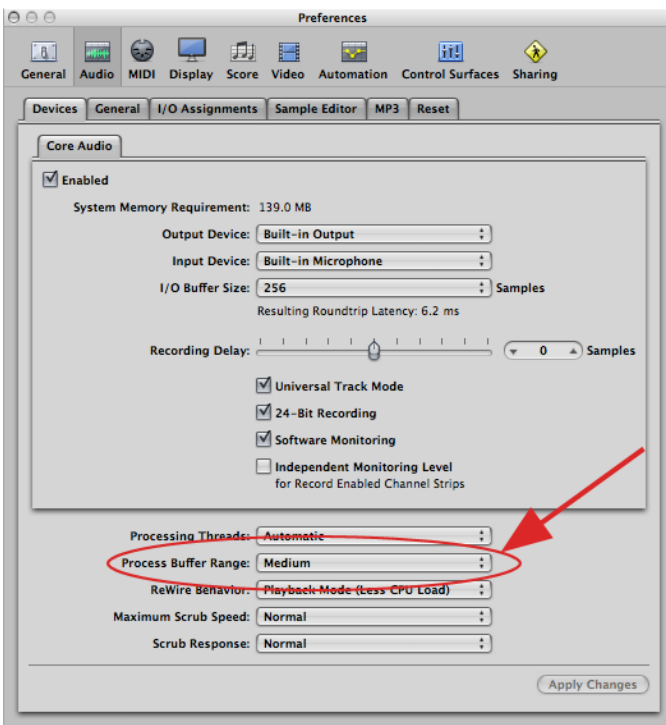
LATENCY and DELAY

Many hosts send MIDI data to Plugin Instruments ahead of time in order for plugins to prepare the Audio to play. In order to make up for a time difference in such cases, you can adjust the delay time needed to compensate for sample rates and buffer sizes that normally plugins would need to process the operations on the audio stream. Since the PlugSE™ does not do any audio processing and instead it passes notes and other MIDI data directly to the synthesizer, depending on the host you may need to adjust delay settings. This delay can be adjusted by adjustment controls located in the MIDI Setup panel.

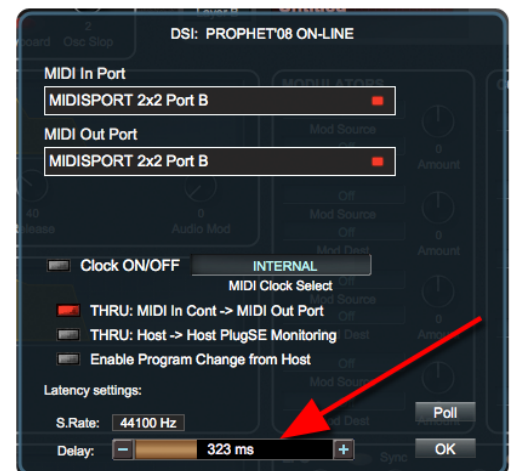
If you are using Logic Pro, make sure that the Buffer Size matches the setting found in Logic's Preferences as shown on the left. Preferred settings are:

I/O Buffer Size: 256 Samples,

Process Buffer Range: MEDIUM.



For other host applications, if you experience issues with sync, you can adjust the delay using a slider (as shown on the right) to eliminate it.



Host

Host function allows you to send programs to the VST patch list. Select a Program you wish to save. Click HOST. You will be presented with a dialog indicating the current host VST program selected. While this dialog is open, click on the VST patch list and select the slot you wish to save the Prophet '08 program to. Click OK. Go back to the VST patch list and click on the same slot and the patch will appear.

Send

The **Send** button presents two options:

- **Current Preset** - sends the preset that is loaded on the editor panel.
- **FX Bank Preset** - sends the unmodified current VST patch to the Prophet '08, allowing you to reset the patch if you return to the beginning of the song and need to undo any changes that automation may have made to the sound.

Receive

The **Recv** (Receive) button gets the currently selected Program from the Prophet '08.

WRITE

The **WRITE** button opens a dialog box that allows you to send the current Program to the Prophet '08 *and to be written into memory*. You can also use this window to change the name before saving by right clicking on the name. Additionally, you may save the current Program to a different location. The Program that is active when the **WRITE** button is pressed appears at the top of the window. You may then select a different Bank and Program location using the Bank buttons.

PIANO

The **PIANO** button displays keyboard within the Editor window.

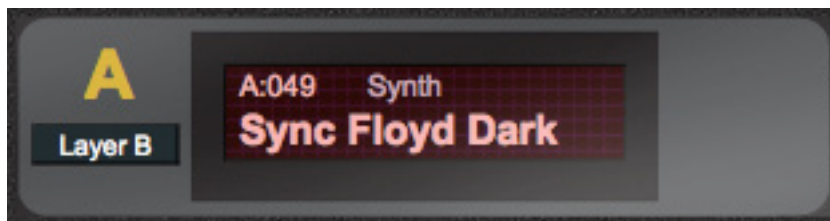


It features Pitchbend and Modulation wheels, a drop down menu to select velocity of notes played from this keyboard and a small keyboard overview that you can click to change the range of the viewable keys. The keyboard window may be dragged (with the bar across its top) up and down to reveal different areas of the editor if your viewing area is limited. You may also resize the main Editor window vertically to show entire editor screen and the keyboard at the same time, as shown below.



Additional features of the Parameter Panel

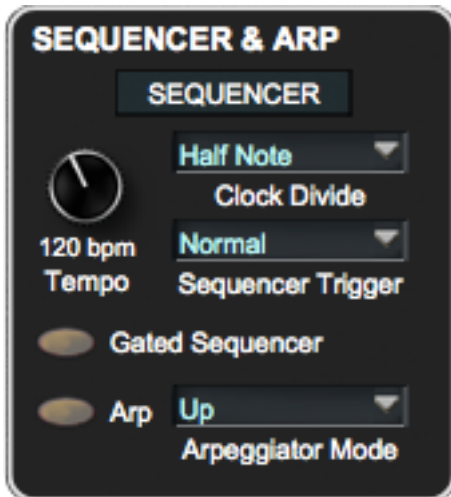
LCD Screen



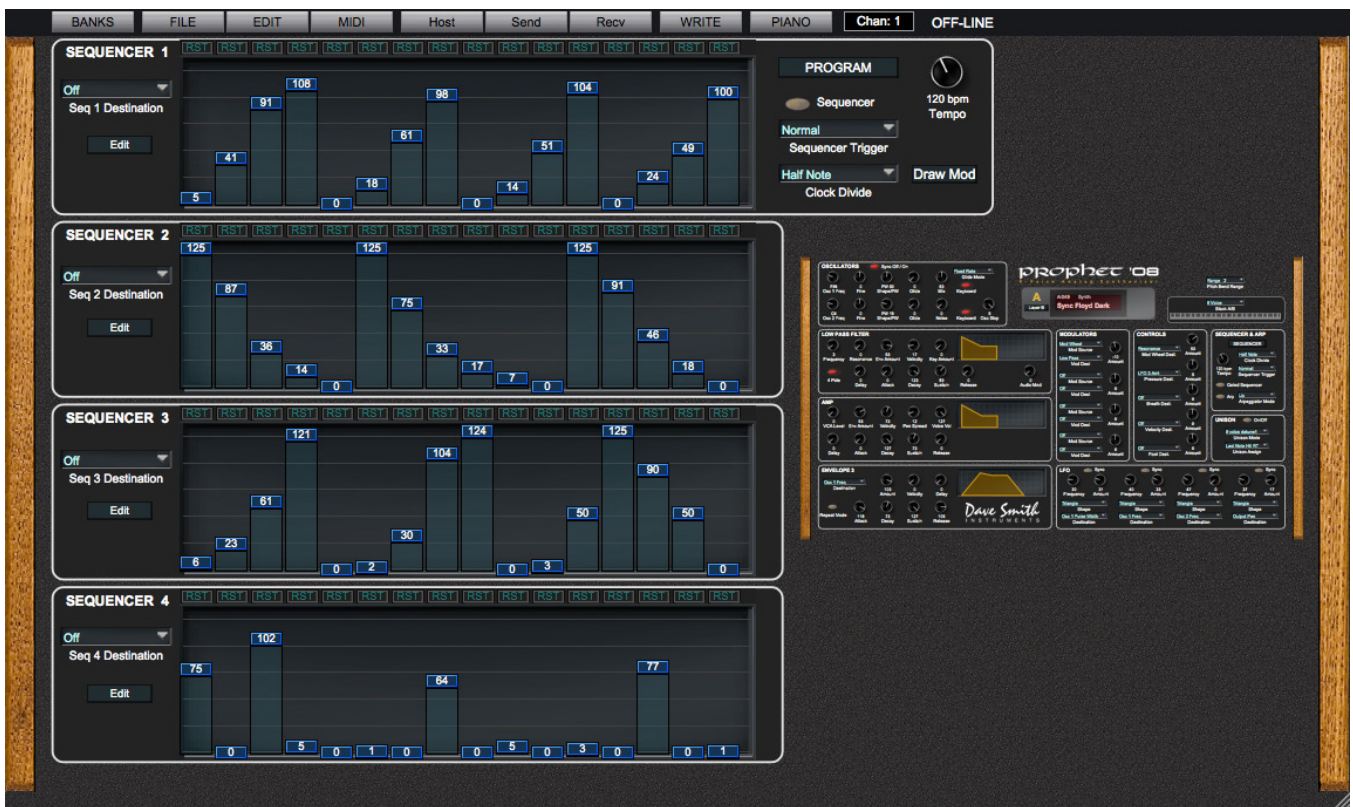
The LCD screen on the Interface Panel has two ‘hot spots’ to assist in selecting a desired program. Clicking anywhere in the Program number field (“A:049” at the top) produces a listing of all of the programs in the current bank from which to make a selection. You can also change the bank and select from any program within that new bank.

Clicking anywhere in the Category field (“Synth” in upper right) produces a list of the available categories from which a new category can be assigned.

SEQUENCER

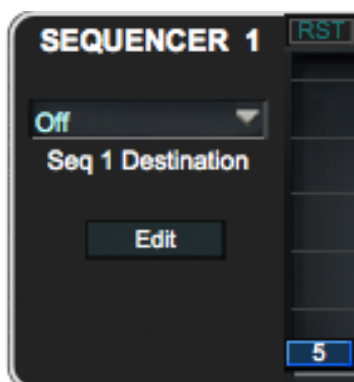


Click on the **SEQUENCER** button at the top of the **SEQUENCER & ARP** panel to open the complete set of parameters for the **SEQUENCER** features of the Prophet '08 as seen below.



This view of the Sequencer shows the four sequencers available with the topmost set showing master functions on the right that apply to all four sets of programmable steps.

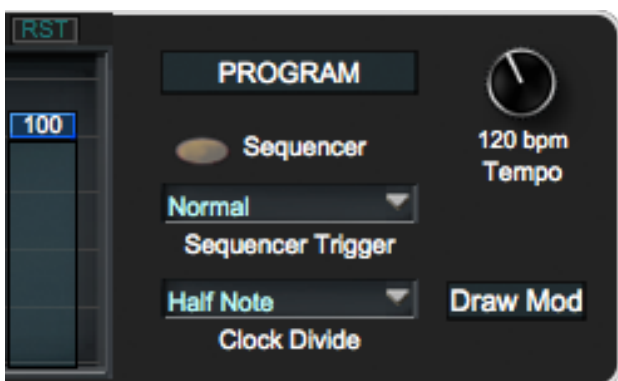
Let's take a look at the three sections of the top Sequencer.



This area shows the Prophet '08 parameter that will be affected by the sequenced steps, selected in the drop down list accessed by clicking the down arrow. The **Edit** button will be explained later.



The middle section shows the 16 steps and the values of each step. While all the values may be entered in this window, there is a more convenient way to do this and will be shown below in **SEQUENCER EDITING** section.



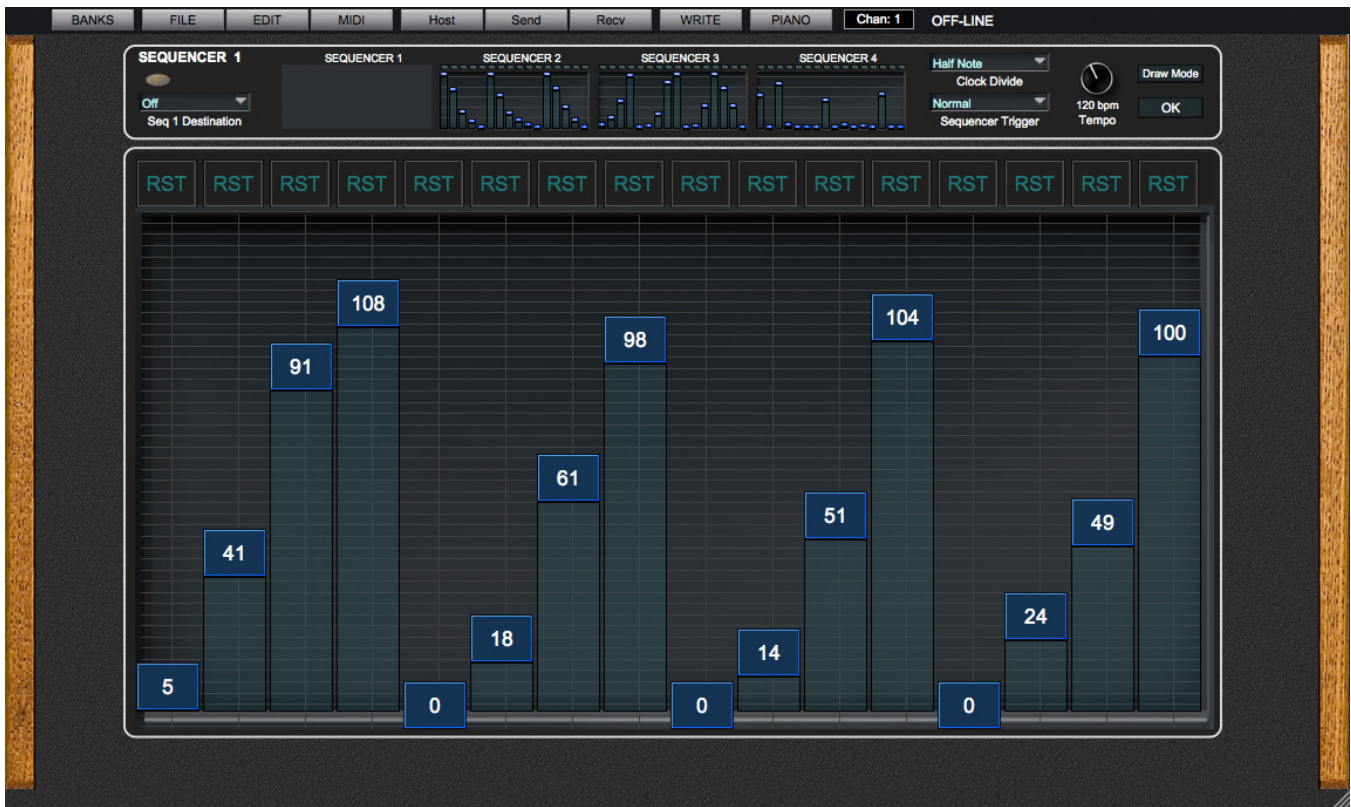
This area to the right is the master section for all four sequencers. Click on the red **LED** to turn the sequencer on and off, adjust **Tempo**, select **Sequencer Trigger** source and choose the **Clock Divide** option to determine the gate time of each step relative to the tempo.

Additionally, by clicking on the **Draw Mode** button, you have the options for **Sliders**, **Pen** or **Quantize**. Choosing **Sliders** allows the individual steps of the sequencer to be raised and lowered to specific values. Selecting **Pen** allows you to click and drag over the area of the screen indicating the sequencer steps and the steps will jump to the level the cursor was at as it passed over. **Quantize** is a secondary Slider mode that moves the steps in values of 2.

Clicking **PROGRAM** in the upper right corner will bring you back to the main editor page.

Clicking the **Edit** button in the in the left area of any of the four sequencers will open the window shown below.

SEQUENCER EDITING



This enlarged view of the sequencer allows easier adjustment of the individual steps. The same controls appear at the top of the window along with four small windows showing the current levels of each of the four sequencers. Clicking on any of these areas will bring the values down the larger window for easy editing.

Select the sequencer you wish to adjust by clicking on the mini view of one of the four available.

Select the Prophet '08 parameter you wish the sequencer to track in the **Seq x Destination** (x = 1, 2, 3 or 4). Set **Clock Divide** and **Sequencer Trigger** as required and click the red **LED** to engage the sequencer

Depending on mode selected in the **Draw Mode** menu, slide the handle of each step or drag across the panel to set the levels of each step. The values in the step handle will depend upon the **Seq x Destination**. That values will be either numeric or indicate midi note names and numbers. Please note that the level can also be adjusted with a scroll wheel of a mouse.

At the top of each step column is a button that will display either **RST** (ReSeT), or **OFF**. The **OFF** function in the Editor is equal to a rest as noted in the Prophet '08 manual. **RST** will be the point were the sequence loops back to the beginning. Again, refer to the Prophet '08 manual for details on programming the sequencer.

When finished, click **OK** to return to the normal Sequencer window.

Finale

We hope you will enjoy using this software. The Prophet '08 PlugSE™ Editor brings dynamic and exciting automation possibilities to your Prophet '08 synth, and we expect you will spend many happy hours exploring all this program has to offer.

If you require more in-depth editing and unique program generation through the use of SoundTower's proprietary Program Morphing and Program Genetics, please download the full Pro Editor to review and discover the additional available features. Programs developed in the full Pro Editors are fully compatible with the PlugSE™ Editor.

For more information, please visit:

www.soundtower.com