



**OPTIX**

# PROTECTING YOUR FUTURE

PRODUCT CATALOGUE



## THERMAL IMAGING

Bi-ocular <b>BidentifieR Series</b>	6
Clip-on <b>ZIR Series</b>	10
Monoculars / Sights <b>Diana IR Series</b>	14
Handheld Cameras <b>eXviZion Series</b>	18
Sights <b>IdentifieR Series</b>	20
Sight for grenade launchers <b>Pagot</b>	24

## NIGHT VISION

Twin Tube Goggles <b>Diana TT</b>	26
Monocular <b>Diana M40</b>	28
Aviator Goggles <b>Diana A</b>	30
Single Tube Goggles <b>Diana</b>	34
Binoculars <b>Diana 3x, 5x, 6x, 10x</b>	36
Clip-on <b>NVA Series</b>	38
Sights <b>ONS Series</b>	40

## DAY SIGHTS

Red Dot Sights <b>MK-6 Series</b>	44
Day Vision Sights <b>ODS Series</b>	48
Grenade Launcher Sights <b>PGO Series</b>	50

## OEM & Integrated Solutions

Thermal Imaging Engine <b>OPTIX X-Core™</b>	52
Fixed Thermal Imaging Cameras <b>Minion Series</b>	54
Ruggedized Thermal Imaging Cameras <b>Minion R Series</b>	56
Ruggedized Thermal Imaging Driver Enhancer <b>Minion DE Series</b>	58
UAS Thermal Imaging Cameras <b>Minion L Series</b>	60
Uncooled Thermal Imaging Cameras <b>Goliath Series</b>	62
Cooled Thermal Imaging Cameras <b>HeatSeekIR Series</b>	64
Day cameras <b>Daybreaker Series</b>	66
Pan/tilt Units <b>PAnORAMix360° Series</b>	68
Multi-sensor Systems <b>OPTIX GUARD Series</b>	70
Mobile Surveillance Systems <b>OPTIX Mobile GUARD Series</b>	74



# PROTECTING YOUR FUTURE

---

For more than 20 years we have put the best of the knowledge and the skills of our team to ensure a safer world.

We have developed equipment to make the hardest missions possible and to keep the peace wherever needed. Because the military and security units at the frontline are not driven by hatred but by the love for what is behind their backs. By using the devices and the systems of OPTIX, they protect the order and the prosperity of regions and countries. They protect their friends, their parents, their loved ones and their children. They protect the future.

OPTIX designs, produces and markets its own series of thermal imaging and night vision devices,

day scopes and integrated systems for strategic surveillance and security. The company offers in its portfolio innovative solutions for the sectors of defence, security, nature protection, sport's hunting optics, medicine and industry. Due to the certified quality standards OPTIX is preferable partner for deliveries of optical, mechanical and electronic assemblies and elements. The company is selling its production in more than 45 countries from all around the world.





THERMAL IMAGING

# BidentifieR Series

Uncooled Thermal  
Imaging Bi-ocular





## Intelligent Intelligence

BidentifieR Series are single channel uncooled thermal imaging bi-ocular, designed especially for military and law enforcement personnel for prolonged observation and reconnaissance. BidentifieR allows target detection and recognition in completely passive mode on short and midrange distances. The sensitive detector and the

intelligent digital video processing provide crisp image at any time and in all weather conditions.

The series are equipped also with tripod mount and analog video output and/or Wi-Fi streaming for remote observation.





# BidentifieR Series

Uncooled Thermal  
Imaging Bi-ocular



## Models:

- BidentifieR 100 / E
- BidentifieR 75 / E

## Main tasks:

- Tactical and strategical surveillance;
- Covert field reconnaissance;
- Remote observation;
- Target acquisition.

## Key characteristics:

- 640 x 480 detector resolution;
- 75 mm / 100 mm objective's focal length;
- Video output or wireless transmission;
- Bi-ocular design;
- Weather type modes;
- Robust and portable;
- Versatile use: handheld, tripod mountable.

## Extended capabilities:

- Built-in GPS and DMC;
- Wi-Fi video streaming and remote control.
- Human detection\* > 2700 m
- Human recognition\* > 900 m
- Vehicle detection\* > 6700 m
- Vehicle recognition\* > 2200 m

\*Distances may vary depending on the model and the atmospheric conditions.



## ZIR Series

### Thermal Clip-on

ZIR Series clip-on thermal devices can be used as a hand-held or weapon-mounted systems for observation, target detection or passive target acquisition during day and night in variety of environment

conditions, including fog, rain, snow, smoke, total darkness. ZIR devices are outstanding thermal imagers with a great number of functions and perfect optical performance.



# ZIR Series

## Thermal Clip-on



ZIR 100



ZIR 60

The sophisticated design of the ZIR Clip-on Thermal Device eliminates the need to remove the day sighting equipment since the ZIR mounts directly in line with a standard day optical sight.

Such a combination allows the soldier to avoid re-zeroing the rifle every time the sight set up is changed, since the primary sight remains undisturbed. The point of impact remains the same no matter how often or how many times the clip-on is mounted.





# Diana IR Series

Thermal Monoculars / Sights



## Versatility creates better perspectives in the mission

DIANA IR Series are multifunctional thermal imaging devices designed to be used by the Special forces and Law enforcement personnel while executing a wide variety of rescue missions and other military operations, regardless of the environmental conditions such as storm, dense fog, smoke, dust, snow or total darkness. These portable

and lightweight thermal imaging monoculars can be used either as a spotter, helmet mounted monocular or can be mounted also on a weapon through the quick mounting Picatinny mechanism /MIL-STD-1913/ for special tools and enabling easy target.





# Diana IR Series

Thermal Monoculars / Sights



## Models:

Diana IR 25  
Diana IR 35  
Diana IR 50

## Main tasks:

- Target acquisition;
- Fire control;
- Tactical and strategical surveillance;
- Field reconnaissance;

## Key Characteristics:

- 384x288 or 640x480 detector resolution
- 25 mm / 35 mm / 50 mm objective's focal length;
- Video output or wireless transmission;

- Extremely compact and portable;
- Versatile use: handheld, helmet mountable, weapon mountable
- Human detection\* > 1000 m
- Human recognition\* > 300 m
- Vehicle detection\* > 2300 m
- Vehicle recognition\* > 700 m

\*Distances may vary depending on the model and the atmospheric conditions.



THERMAL IMAGING

# eXviZion Series

Handheld Thermal  
Cameras





eXviZion are unique portable uncooled mid-range thermal imaging cameras. The cameras allow the user to conduct surveillance in all type of harsh weather condition such as: rain, fog and in total darkness, using passive mode (without additional backlight).

The cameras are offered either with 384x288 or with 640x480 detector resolution and are designed for maximum user convenience. The control buttons allow quick manipulation and setup of different settings and modes. Video transfer is also enabled through analog video output or wirelessly through add-on adapter.



# IdentifieR Series

## Thermal Sights

IdentifieR Series thermal imaging sights are specially designed for the military and law enforcement teams providing precision and durability with various extra features for ballistic corrections, exchangeable reticle designs, image adjustments, video transfer and many more in the

optimal compact package. They are shockproof to all heavy caliber rifles such as .338 Lapua Magnum and .50 BMG. The sights can be used as portable camera, enabling analog video or wireless transfer.



# IdentifieR Series

## Thermal Sights

### Main tasks:

- Target acquisition;
- Fire control;
- Tactical and strategical surveillance;
- Field reconnaissance.

### IdentifieR 60 Key Characteristics:

- 384x288 or 640x480 detector resolution
- 60 mm objective's focal length
- Variety of reticle types with ballistics
- Video output or wireless transmission.
- LRF ready
- Durable housing and design that can withstand the toughest calibers.
- Human detection\* > 1600 m
- Human recognition\* > 500 m
- Vehicle detection\* > 4000 m
- Vehicle recognition\* > 1300 m

### IdentifieR 100 Key Characteristics:

- 384x288 or 640x480 detector resolution;
- 100 mm objective's focal length;
- Variety of reticle types with ballistics;
- Video output or wireless transmission;
- LRF ready
- Durable housing and design that can withstand the toughest calibers.
- Human detection\* > 2700 m
- Human recognition\* > 900 m
- Vehicle detection\* > 6700 m
- Vehicle recognition\* > 2200 m

The new rangefinder OPTIX LRF 905-500 Compact is designed as an add-on to the IdentifieR Series thermal imaging sights and allows accurate distance measurement for even more precise shooting.



IdentifieR  
60



IdentifieR  
100



# Pagot

Thermal Sight for  
grenade launchers



## Upgrade your RPG

Pagot is a thermal imaging sight specially designed for grenade launchers. The sight cuts through the battlefield and environment obscurants to deliver crisp image and clear target visibility, enabling the operatives to make quick decisions

to accomplish their mission. Pagot is dedicated for optimal performance with 40 mm RPG-7 and provides different reticle designs with ballistic corresponding to the different grenade types.





#### ■ Main tasks:

- Target acquisition;
- Fire control;
- Tactical and strategical surveillance;
- Field reconnaissance;

#### ■ Key Characteristics:

- 384x288 or 640x480 detector resolution
- 25 mm objective's focal length;
- Extremely compact and portable;
- Versatile use: handheld, helmet mountable, weapon mountable
- Human detection\* > 1000 m
- Human recognition\* > 300 m
- Vehicle detection\* > 2300 m
- Vehicle recognition\* > 700 m

\*Distances may vary depending on the model and the atmospheric conditions.



# Diana TT

## Twin Tube Night Vision Goggles

Twin tube night vision goggles DIANA TT is a stereoscopic night vision device with more than 50° field of view and 1x magnification. It is specially designed for military and law enforcement special units. The device can be mounted on a helmet or mounted on the head of the user and also allows the mounting of afocal 3x and 4x magnifiers in front of the objectives. Diana TT is suitable for driving a vehicle due to the stereoscopic optical scheme.



**■ Main tasks:**

- Field observation and patrolling;
- Tactical and strategical surveillance;
- Field reconnaissance.
- Nighttime vehicle driving with no lights

**■ Key Characteristics:**

- The device can incorporate types of 18 mm Image Intensifier tubes

- 20,4 mm objective's focal length
- 50° field of view larger than all similar products
- provides stereoscopic vision
- Operates with one AA battery of any type
- Incorporates IR illuminator in the housing
- Can be combined with afocal 3x and 4x magnifiers.

# Diana M40

## Night Vision Monocular

DIANA M40 is a multipurpose night vision monocular designed for military and law enforcement units. It can be used handheld, mounted on a helmet, mounted on the head of the user or on the Picatinny rail of a weapon. The monocular can be mounted in pair with another monocular to achieve the functionality of night vision goggles. It also allows the mounting of afocal magnifiers in front of the objective that can increase the device magnification to 3x, 4x or 5x.

### Key tasks:

- Field observation and patrolling;
- Fire control in combination with a night vision compatible red dot sight;
- Tactical and strategical surveillance;
- Field reconnaissance.



### Key Characteristics:

- The device can incorporate different types of 18 mm Image Intensifier tubes;
- 23,8mm objective's focal length;
- Has 42° field of view larger than the most similar products;
- Can perform variety of tasks;
- Operates on any type of AA battery;
- Incorporates IR illuminator in the housing;
- Can be combined with a red dot sight to be used as a night vision sight;
- Can be combined with afocal magnifiers and transform in long range observation device.







# Diana A

Aviator Night Vision Goggles



OPTIX aviator night vision goggles DIANA A are specially designed for operation by helicopter pilots. They are used for low altitude nap-of-the-earth flights takeoff and landing at night on non-illuminated terrains. The goggles considerably expand the capabilities of the air crews for

patrolling, reconnaissance and for search and rescue missions. The absence of eyecups provides fully functional peripheral vision at all times. The goggles can be powered by two packs of two AA batteries each or by connecting to the on-board DC network.





# Diana A

Aviator Night Vision Goggles



## Main tasks:

- Takeoff and landing at night;
- Patrolling and reconnaissance;
- Nap-of-the-earth flight;
- Search and rescue missions.

## Key Characteristics:

- The device can incorporate different types of 18 mm Image Intensifier tubes;
- 23,8 mm objective's focal length;
- Has a 41° field of view, wider than the standard aviator night vision goggles;
- Compliance with ANVIS-6;
- Optional compliance with ANVIS 6 or ANVIS 9.



# Diana

## Single Tube Goggles

OPTIX single tube night vision goggles DIANA is a night vision device designed for M and LE units. It can be used handheld, mounted on a helmet or mounted on the head of the user. The device also allows the mounting of afocal magnifiers in front of the objective that can increase the device magnification to 3x, 4x or 5x.





**Main tasks:**

- Field observation and patrolling;
- Tactical and strategical surveillance;
- Field reconnaissance.

**Key Characteristics:**

- The device can incorporate different types of 18 mm Image Intensifier tubes;
- 23,8 mm objective's focal length;

- Has larger field of view than the most similar products;
- Operates with any type of AA battery;
- Incorporates IR illuminator in the housing;
- Can be combined with afocal magnifiers and transform in long range observation device.

# Diana 3x, 5x, 6x, 10x

## Binoculars

Night vision binoculars Diana are designed for land reconnaissance in natural starlight, moonlight illumination or darkness. They have extremely high resolution and field of view detecting low-contrasting objects at a distance up to 3000 m.



Diana 3x



Diana 5x



Diana 6x



Diana 10x



# NVA Series

Clip-on

The NVA series are clip-on devices designed for use in combination with a day riflescope that is already mounted on the weapon platform in order to convert it into a night vision system. They are specially designed for use by marksmen in the military and law enforcements. The NVA series can be used in combination

with assault rifles, sniper rifles and on any platform with long Picatinny rail. The devices do not need any additional adjustment in accordance with the riflescopes - after they are mounted in front of them, the system is ready for shooting.



**NVA-75**



**NVA-10**

**| Main tasks:**

- Target acquisition;
- Target fire in combination with daylight riflescope;
- Tactical and strategical surveillance;
- Field reconnaissance.

**| Key Characteristics:**

- Accepts different types of 18 mm Image Intensifier tubes;

- manual or automatic gain control function;
- Ease of use - "mount and shoot";
- Controls located at the aft of the housing for greater ease of operation;
- Operates on any type of AA battery;
- Durable housings and designs that can withstand the toughest calibers.



NIGHT VISION

# ONS Series

Sights







ONS Series are the most compact night vision sights in their class on the market. They are designed for use in the military and law enforcement units. The devices ensures durability and precision. The sights are offered in combination with different Image

Intensifier tubes and reticles. They also incorporate standard Picatinny rail mount and IR illuminator mount.



# ONS Series

## Sights

### Main tasks:

- Target acquisition;
- Fire control;
- Tactical and strategical surveillance;
- Field reconnaissance.



ONS-3

### ONS-3 Key Characteristics:

- The device incorporate different types of 18 mm Image Intensifier tubes;
- 75mm objective's focal length;
- Variety of reticle types with ballistics for different calibers;
- Mount for IR illuminator;
- Operates with any type of AA battery;
- Durable housing and design that can withstand the toughest calibers.



ONS-4

### ONS-4 Key Characteristics:

- The device can incorporate different types of 18 mm Image Intensifier tubes;
- 98 mm objective's focal length;
- Variety of reticle types with ballistics for different calibers;
- Operates with any type of AA battery;
- Durable housing and design that can withstand the toughest calibers.



ONS-6

### ONS-6 Key Characteristics:

- The device can incorporate different types of 18 mm Image Intensifier tubes;
- 160mm objective's focal length;
- Variety of reticle types with ballistics for different calibers;
- Mount for IR illuminator;
- Operates with any type of AA battery;
- Durable housing and design that can withstand the toughest calibers.



## MK-6 Series

### Red Dot Sights

MK-6 is a reflex weapon sight, generally referred to as "imaginary red dot sight". It is suitable for rapid target acquisition, including moving targets. It can be used both standalone and in combination with different types of magnifiers, night vision devices or thermovision devices.

It is suitable for all sorts of small arms: light machine guns, assault rifles, shotguns and pistols. MK-6 exists in three sub-models: S, M, L. The adjustable reticle brightness allows the operator to choose between 7 day modes and 3 night vision compatible modes.



# MK-6 Series

## Red Dot Sights

### Key Characteristics:

Magnification	1x
Dot size	< 2.5 M.O.A
Dot brightness	10 settings (1 off)
1 click adjustment	0.38 M.O.A. (11 mm / 100 m)
Power supply	1 x CR1/3N Lithium battery
Mounting method	1 or 2 rings, 30 mm
Overall dimensions (L x W x H)	L: 181 x 53 x 53 mm M: 164 x 53 x 53 mm S: 125 x 53 x 53 mm
Weight	L: 0.260 kg M: 0.250 kg S: 0.225 kg



MK-6 S



MK-6 M



MK-6 L





## ODS Series

Day Vision Sights



ODS - 4M

### ODS-4M Key Characteristics:

- Extremely low weight of 420 g without battery;
- 98 mm objective's focal length;
- 6,5° field of view;
- Variety of reticle types with ballistics for different calibers;
- The reticle illumination operates on any type of AA battery;
- Durable housing and design that can withstand the toughest calibers.



ODS Series are the most compact and lightweight 4x & 6x magnification sights on the market. They are designed specially for use in combination with assault rifles and light machineguns. The sights may incorporate different reticles and has reticle illumination that can be powered by any type of AA battery.

**Main tasks:**

- Target acquisition;
- Fire control.

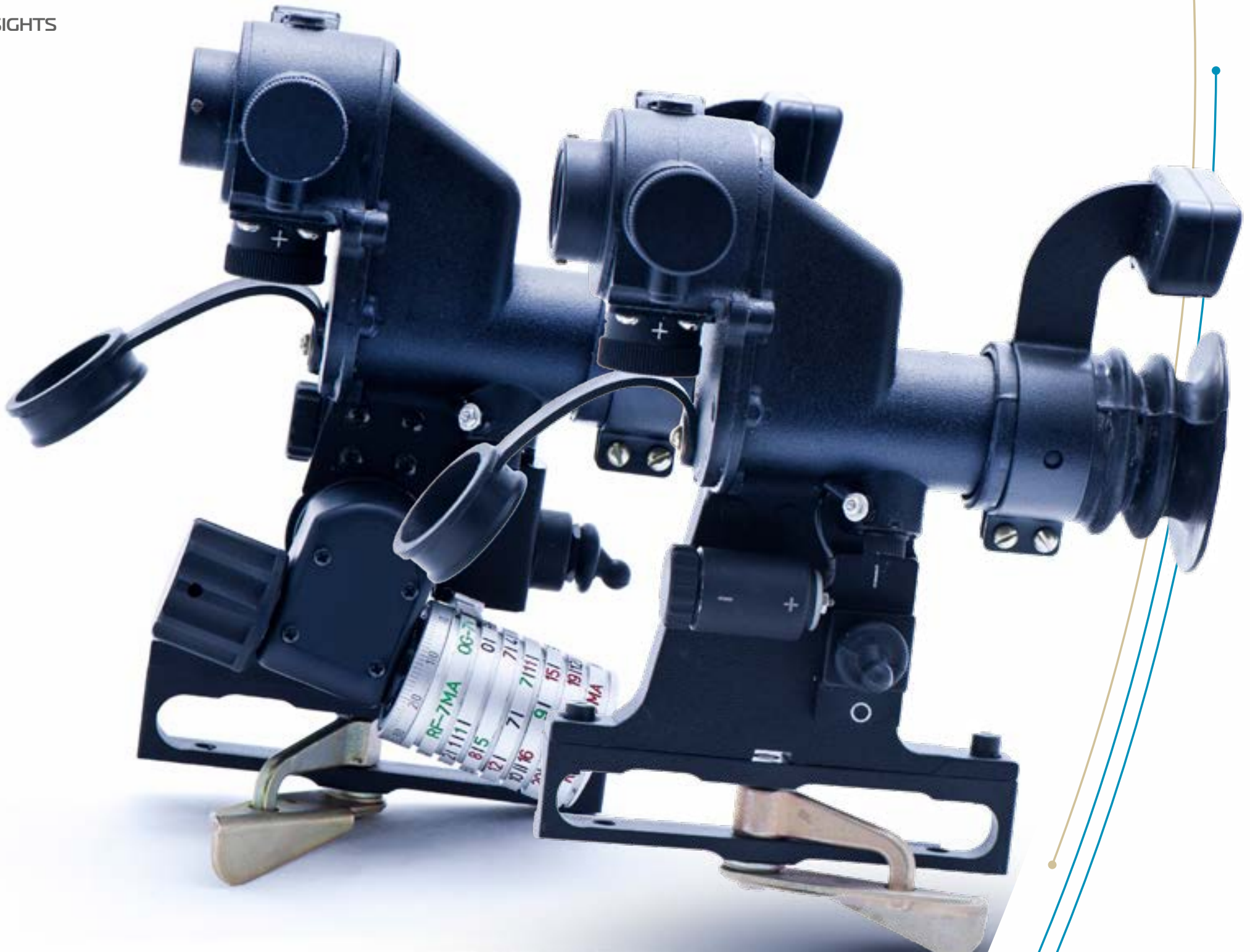


**ODS - 6M**

**ODS-6M Key Characteristics:**

- Extremely low weight of 530 g without battery;
- 150 mm objective's focal length;
- 4,5° field of view;
- Variety of reticle types with ballistics for different calibers;
- The reticle illumination operates on any type of AA battery;
- Durable housing and design that can withstand the toughest calibers.





# PGO Series

## Grenade Launcher Sights

PGO Series are specialized optical sights with 2,7x magnification and 13° field of view. They are designed to be used in combination with the RPG-7 series grenade launcher. They have ballistic reticle, external drum mechanism for ballistic corrections for set grenade types and an universal ballistic scale that allow the sight to be used in combination with any possible type of grenade.

### Main tasks:

- Target acquisition;
- Fire control.



### PGO-7V Key Characteristics:

- Specialized for the RPG-7 series platform;
- Ballistic reticle for the most common grenade types;
- Reticle illumination.



### PGO-7VU Key Characteristics:

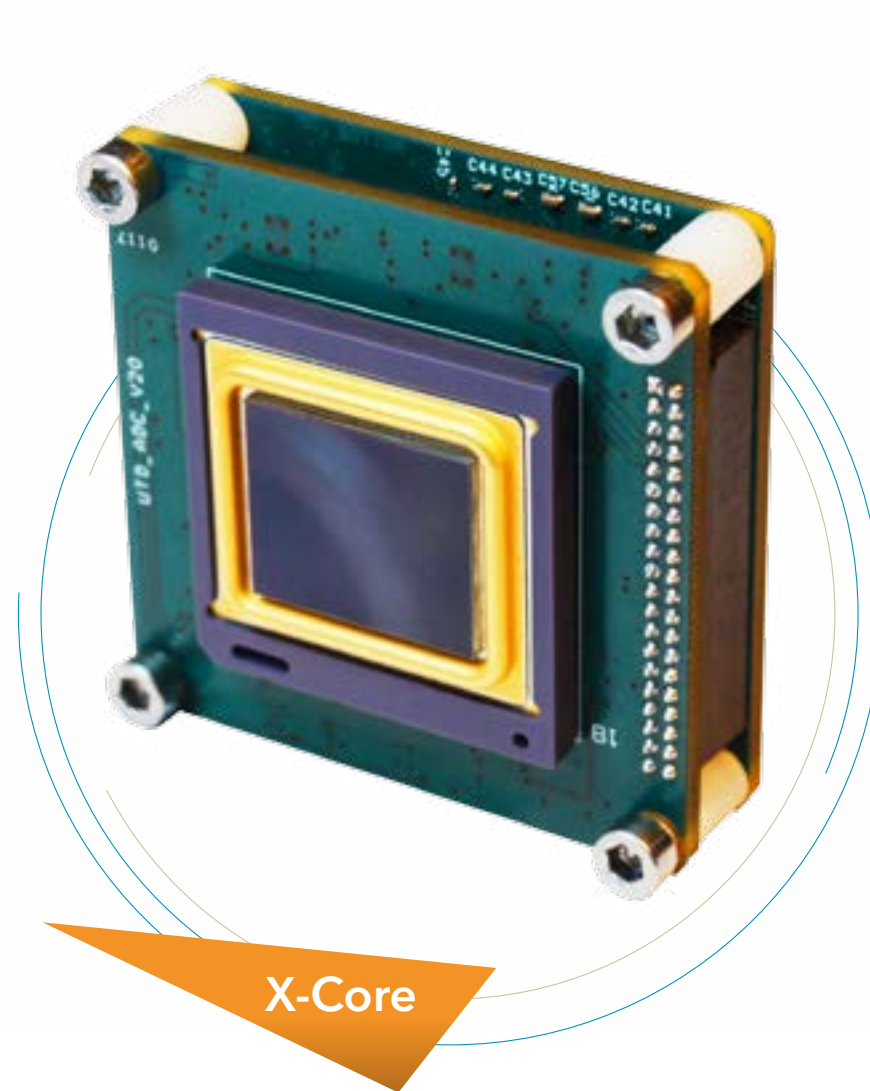
- Specialized for the RPG-7 series platform;
- Ballistic reticle and mechanisms that allow the use of all possible grenade types;
- Reticle illumination.

# OPTIX X-Core™

## Thermal Imaging Engine

X-Core is the latest generation thermal imaging engine, based on cutting-edge hardware solutions and dedicated video processing algorithms.

OEM partners can benefit from superior image quality and robust design, well proven in harsh environmental conditions. X-Core is ready to be combined with a variety of objective lenses (including Optix Lenses) for a wide range of applications as surveillance and radiometric systems, thermal weapon sights and various handheld devices.





**Application areas:**

- Security & Defence;
- Law Enforcement - Reconnaissance, Fire Detection, Traffic Control.



**Minion 19**



**Minion 100**



**Minion 25**



**Minion 60**



**Minion 35**



**Minion 50**

# Minion Series

Fixed Thermal Imaging Cameras

Minion is a portable uncooled thermal imaging camera suitable for integration into security and observation systems, enabling twenty-four hour surveillance in total darkness and under severe weather conditions.

The innovative optical system and digital enhancement of the video signal provide high contrast, detailed and sharp picture at any time in a completely passive mode.

The reliable mechanical construction makes Minion suitable for any indoor and outdoor installation.

Along with its accessories Minion includes operational software for remote control and setup of the main functions.



# Minion R Series

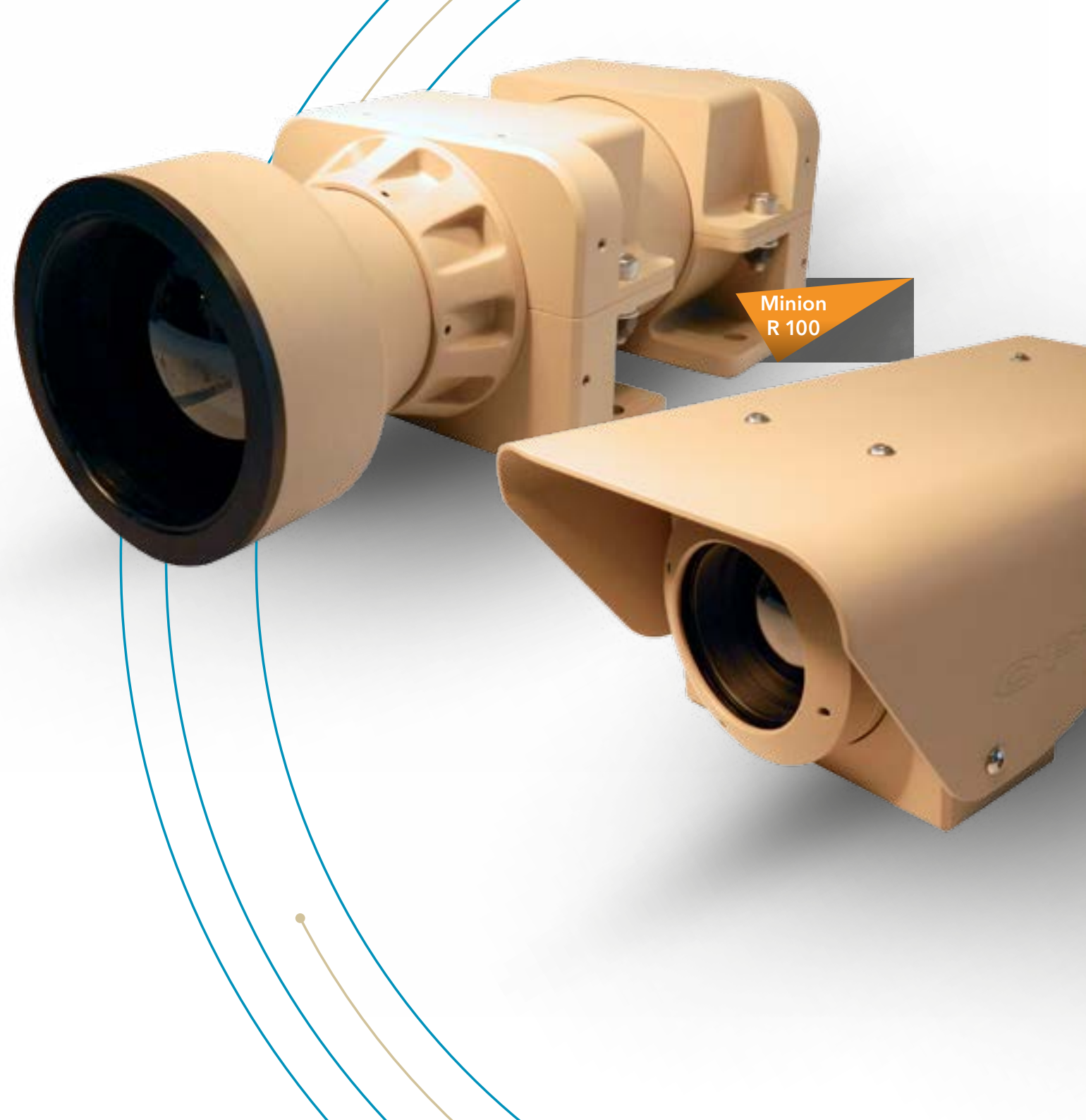
## Ruggedized Thermal Imaging Cameras

OPTIX Minion R Series are thermal imaging cameras specially designed for integration in light and heavy armored vehicles for completely passive driving and reconnaissance.

Minion R series are built to withstand the toughest vibrations and shocks and fully comply to MIL STD 810G.

Minion R 19 mm and Minion R 9 mm are suitable for driver enhancement camera application with extra wide field of view and allowing orientation and maneuvering in the darkest night and in all weather conditions.

Minion R 60 and Minion R 100 are specially designed for reconnaissance and fire control.



Minion  
R 100



A rugged, tan-colored thermal imager with a central lens and various adjustment knobs. It is mounted on a bracket with two large, curved mounting feet. The device is shown from a three-quarter perspective, highlighting its compact and industrial design. The background features a light blue and white geometric pattern of interconnected lines and dots, suggesting a network or sensor field.

Minion  
R 60

Minion  
R 19

**Key Characteristics:**

- Solid and rugged;
- Uncooled detector with 384x288 or 640x480 resolution;
- 19 mm, 25 mm, 60 mm, 100 mm objective's focal length;
- Human detection\* > 230 m\* > 2600 m;
- Human recognition\* > 80 m\* > 880 m;
- Vehicle detection\* > 600 m\* > 6700 m;
- Vehicle recognition\* > 200 m\* > 2200 m.

\*Distances may vary depending on the detector, objective lens and the atmospheric conditions.

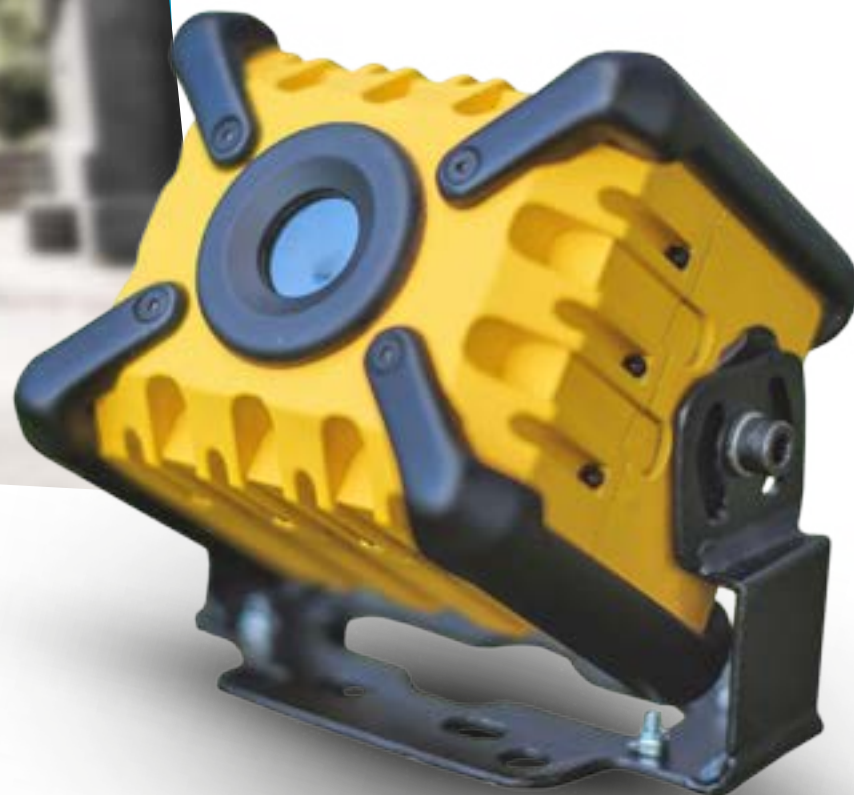


## Minion DE Series

Ruggedized Thermal  
Imaging Driver Enhancer

OPTIX Minion DE (Driver Enhancer) is specially designed thermal imaging camera allowing the control of all types vehicles in all kind of environmental conditions like smoke, dust, snow or total darkness. An advantage of the camera is the hard carbon coated protective window with integrated defroster. There is a possibility to overlay the vehicle dimensions on the thermal

image to provide a perspective of a movement for a superior situational perception and awareness. A variety of functions of the camera can be used via RS232 or TCP/IP interface (manual NUC, image inversion, flipping, zoom, etc.). OPTIX Minion DE is provided with attachment adaptor for proper installation to the vehicle.





# Minion L Series

UAS Thermal Imaging Cameras



These extremely compact and lightweight cameras are specially designed to be integrated in UAVs for aerial and land observation, for different search and rescue operations in isolated areas, for environmental surveys and precision agriculture.

Minion L series provide extra wide field of view and crystal clear image in the harshest weather conditions for optimal user experience.

#### Key Characteristics:

- Compact and lightweight, optimized for UAVs;

- Uncooled detector with 384x288 or 640x480 resolution;
- 19 mm, 25 mm objective's focal length;
- Human detection\* > 230 m;
- Human recognition\* > 80 m;
- Vehicle detection\* > 600 m;
- Vehicle recognition\* > 200 m.

\*Distances may vary depending on the detector, objective lens and the atmospheric conditions.

# Goliath Series

## Uncooled Thermal Imaging Cameras

Goliath Series are uncooled thermal imaging cameras suitable for integration into security and surveillance systems, allowing twenty-four hours of operation in full darkness and heavy weather conditions. The cameras are based on uncooled 640x480 detector and combine the distance observation with the following advantages:

- Lack of a cryogenic cooler having a high consumption and expensive maintenance;
- Significantly lower price;
- Continuous operation.

The high-end motorized objectives and the sensitive thermal detector provide a detailed and contrasting picture and superb image quality. OPTIX Goliath Series are represented by the following models:

- GOLIATH 45/135 (dual FOV);
- GOLIATH 60/180 (dual FOV);
- GOLIATH 25-225 (continuous zoom);
- GOLIATH 40-300 (continuous zoom).





# HeatSeekIR Series

## Cooled Thermal Imaging Cameras

HeatSeekIR series are represented by six highly sensitive cooled thermal imaging cameras, specially designed to be used on extremely long distances for border control land and marine protected areas.

The HeatSeekIR cameras are able to detect the temperature differences between the object and the environment less than 20 mK. The staring high resolution 640x512 pixels detector delivers high range performance and image quality. Compact design offers flexibility in different type of configurations, enabling operations in moving vehicles and fixed platforms.

The cameras are available with different continuous zoom lens systems, which offer different focal length and field-of-view for certain applications.

Depending on the lens systems are available the following models:

- HeatSeekIR H (57-825 mm)
- HeatSeekIR M (38-550 mm)
- HeatSeekIR L (19-275 mm)
  
- HeatSeekIR H4 (38-825 mm)
- HeatSeekIR M4 (26-560 mm)
- HeatSeekIR L4 (15-330 mm)





# Daybreaker Series

## Day cameras

The Daybreaker series comprises of three day cameras:

- Daybreaker 36 is a standard definition color camera with magnification from 1x to 36x;
- Daybreaker SR HD is a high definition color camera with magnification from 1x to 30x;
- Daybreaker LR HD is a high definition color camera with magnification from 1x to 32x.

The cameras are suitable for integration into security and observation systems, enabling surveillance with perfect quality. The Daybreaker series are designed for versatile applications in the field of security systems, fire-precaution equipment, video surveillance of border areas, strategic zones and others. The cameras are equipped

with a variety of convenient functions such as Auto Focus, Digital Image stabilization, Automatic Gain Control, Color correction, etc.

### ■ Main tasks:

- Integration into security systems;
- Strategic zone surveillance either as standalone or as a part of an integrated system;
- Integrating into fire warning systems.

### ■ Key Characteristics:

- 36X optical zoom for DAYBREAKER 36;
- 30X optical zoom for DAYBREAKER SR HD;
- 32X optical zoom for DAYBREAKER LR HD;
- Specialized software;
- Great versatility.



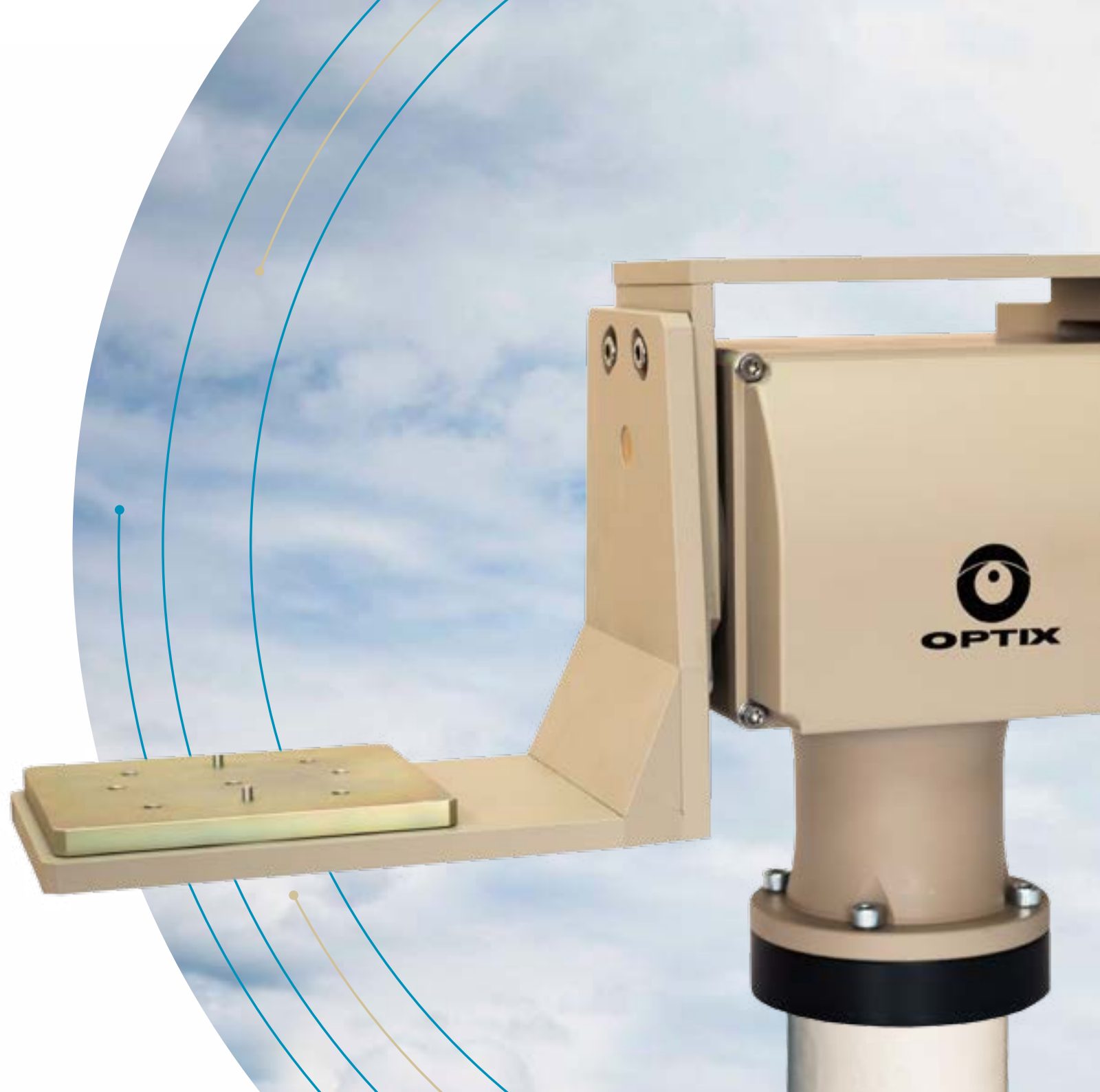


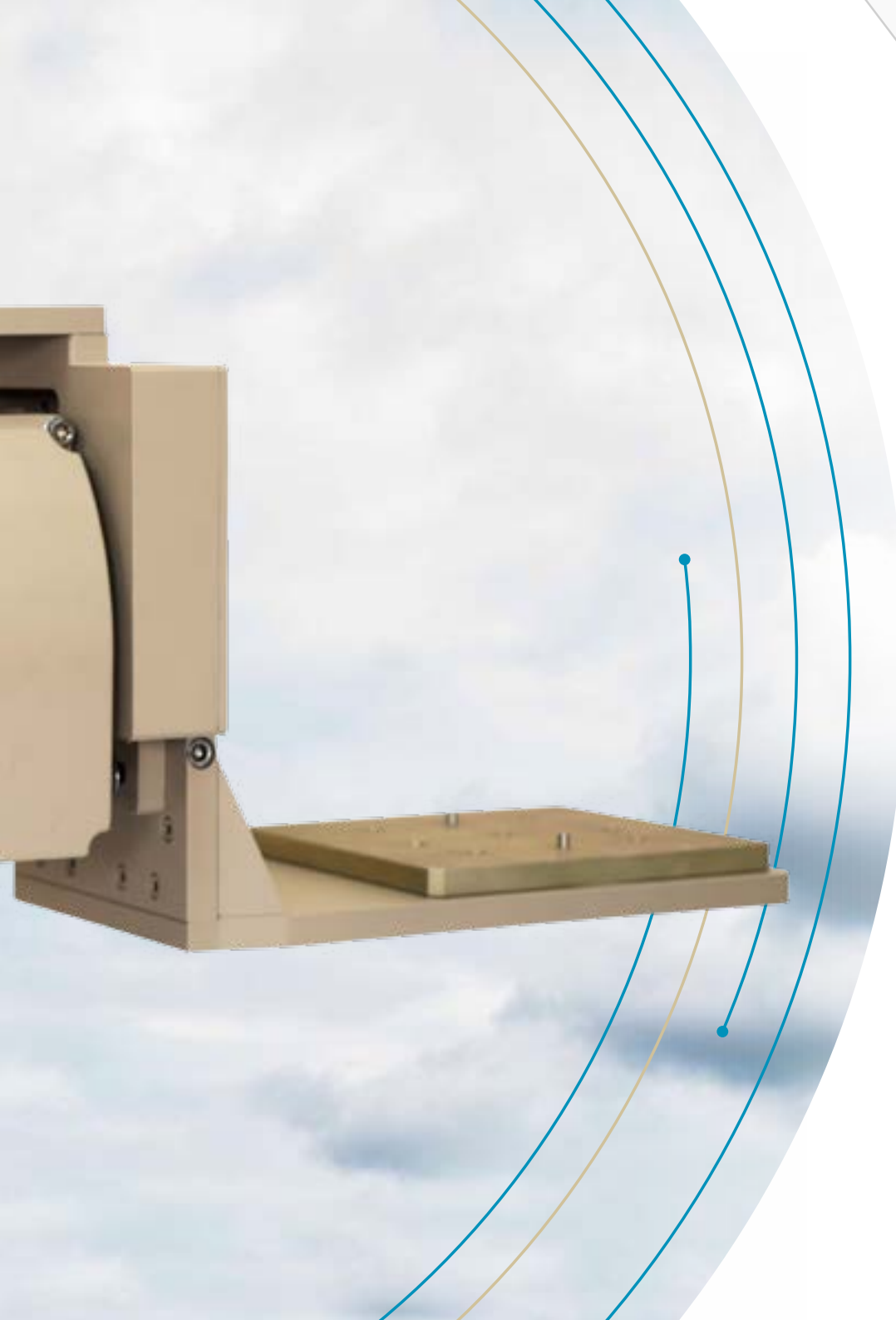
# PAnORAMix360° Series

## Pan/tilt Units

The pan/tilt unit is the main element in each & every multi-sensor system. It serves for very precise directing of the attached surveillance or measurement sensors in the chosen direction, it ensures their reliable management in every moment and it provides precise & accurate alignment of the sensors' axes.

OPTIX PAnORAMix360° Series includes pan/tilt units for budgetary, middle and high-end class multi-sensor systems. These are various systems providing surveillance at short (up to 3 km), middle-range (up to 10 km) and long-range (up to 20 km) distances, based on included cooled / uncooled thermal imaging and color cameras.





OPTIX PAnORAMlx360° Series is represented by the following key products:

- OPTIX PAnORAMlx360° Standard is pan/tilt unit for middle and high-end multi-sensor systems, providing very precise position accuracy and payload capabilities for up to 35 kg;
- OPTIX PAnORAMlx360° MINI is budgetary pan/tilt unit for low-end multi-sensor systems, demanding payloads up to 16 kg;
- OPTIX PAnORAMlx360° Heavy is pan/tilt unit for high-end multi-sensor systems, providing very precise position accuracy and payload capabilities for up to 80 kg.

Every pan/tilt unit has  $n \times 360^\circ$  (continuous rotation) azimuth movement, various azimuth & elevation speed rotation and precise positioning accuracy in accordance with your demands.

In last, but not at least, every product from the Series have the capabilities for continuous 365/24/7 work in all weather conditions. They are extremely ruggedized, designed in accordance with MIL-STD-810 requirements, allowing very easy installation and providing long-lasting reliability.



## OPTIX GUARD Series

### Multi-sensor Systems

OPTIX GUARD Series is a family of long-range, extremely reliable and super durable multi-sensor systems available in each range and performance class.

OPTIX GUARD Series includes budgetary, middle and high-end class multi-sensor systems solutions.

These are various systems providing surveillance at short (up to 3 km), middle-range (up to 10 km) and long-range (up to 20 km) distances, based on included cooled / uncooled thermal imaging and color cameras.



  
**OPTIX**

# OPTIX GUARD Series

## Multi-sensor Systems

They can integrate variety of sensors:

- Mid-wave and long-wave thermal imaging cameras;
- Powerful color cameras;
- Precise long rangefinders;
- Accurate DMC.

All sensors are perfectly co-aligned together on extremely reliable & continuously rotating pan/tilt platforms to create extraordinary surveillance solution for the real-time

detection, recognition and tracking of targets over long distances.

No matter the type of installation OPTIX GUARD can be the ideal flawless solution for boundary and coastal surveillance, monitoring and protection in every environment and harsh weather.







  
OPTIX

# OPTIX Mobile GUARD Series

## Mobile Surveillance Systems

Mobility...

To be mobile today means to be first.

Imagine the perfect integrated system in a mobile version. Fully autonomous. Providing unparalleled comfort for the operators, combined with the basic chassis' speed and the ability to overcome all terrains.

At this very moment there are over 100, varying in appearance from the basic vehicle and the integrated equipment, mobile systems monitoring borders and strategic sites on the territory of the Republic of Bulgaria and abroad.

We have the knowledge; we have the experience.

**We are integrating security.**







**OPTIX**

[www.optixco.com](http://www.optixco.com)



ОПТИКС АД

Ул. "Захари Стоянов" 65  
4500 Панагюрище  
Тел.: 0357 6 41 25  
Факс: 0357 6 30 97

OPTIX JSC

65, Zahari Stoyanov Str.  
4500 Panagyurishte  
Tel.: +359 357 6 41 25  
Fax: +359 357 6 30 97

[facebook.com/Optixco](https://facebook.com/Optixco)  
[youtube.com/optixcobg](https://youtube.com/optixcobg)  
[instagram.com/optixco](https://instagram.com/optixco)  
[linkedin.com/company/optix-co](https://linkedin.com/company/optix-co)

E-mail: [optix@optixco.com](mailto:optix@optixco.com)  
[www.optixco.com](http://www.optixco.com)