

DISTRIBUTED BY

Best MATERIALS.com[®]

ANTI FRACTURE · SOUND CONTROL



WATERPROOFING · FLOOR WARMING



PROTECTO WRAP FLOORING UNDERLAYMENTS

AFM[®] Anti Fracture Membrane | Protecto Deck[™] | AFM-WM[®] Anti Fracture Waterproofing Membrane

Whisper Mat[®] CS - Ceramic & Stone | Whisper Mat[®] HW - Engineered Hardwood

Whisper Mat[®] LVT | Peel and Heat Cutting Edge[™]

Premium Building Products That Protect

| RESIDENTIAL · COMMERCIAL |

sales@bestmaterials.com | <http://www.bestmaterials.com> | 1-800-474-7570



PROTECTO WRAP FLOORING UNDERLAYMENTS

Premium Building Products
That Protect

THE PROTECTO WRAP DIFFERENCE

Since 1952, Protecto Wrap Company has been manufacturing waterproofing membranes with a sound reputation for producing the highest quality products available. With our full line of state-of-the-art flooring underlayments, we ensure long term protection from substrate movement helping to keep the finished flooring our products shield look and function as well as the day they were installed.

Whether you're looking to keep floors **quiet, waterproof, crack-free or warm**, we have the solution you're looking for. Our wide variety of innovative underlayments include:

- **AFM® Anti Fracture Membrane**
- **Protecto Deck™**
- **AFM-WM® Anti Fracture Waterproofing Membrane**
- **Whisper Mat® CS**
- **Whisper Mat® HW**
- **Whisper Mat® LVT**
- **Peel and Heat Cutting Edge™**



Additionally, Protecto Wrap offers design consultation and field technical support for all of our products. Our knowledgeable experts not only know how our products are built but how they're meant to be used on the job site. Plus, all of our products are manufactured in America at our headquarters in Denver, Colorado by our own employees.

No other company can boast the same combination of quality, innovation and expertise.

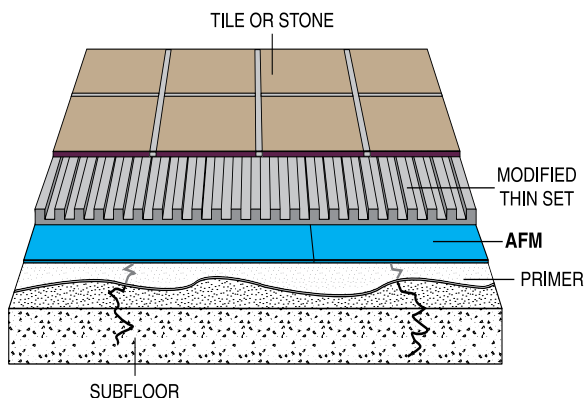


THE PROTECTO WRAP DIFFERENCE



AFM® ANTI FRACTURE MEMBRANE PEEL AND STICK CRACK ISOLATION FOR TILE

AFM Anti Fracture Membrane is made up of a tough anti microbial fabric top with an aggressive rubberized adhesive that has the flexibility and strength to withstand lateral or in-plane structural movement and concrete shrinkage cracks up to 3/8" without transferring the stress load to the finished tile flooring. AFM is designed for thin-set tile applications. Installations requiring more than 3/8" of thin-set mortar need to be raised with a self-leveling compound or a pre-mortar bed and allowed to cure prior to installation of AFM. Use latex modified thin-set mortar to install tile over AFM. Available in 12" x 25' roll (25 sq. ft.), 12" x 75' (75 sq. ft.) and 36" x 75' (225 sq. ft.).



FEATURES & BENEFITS

- For use under thin-set tile, stone and marble
- Anti fracture resistant to 3/8"
- Heavy Duty Robinson Rating
- Approved over radiant heated subfloors
- Uniquely thin system (40 mil)

AFM® ANTI FRACTURE MEMBRANE



PROTECTO DECK™ WATERPROOFING SYSTEM FOR EXTERIOR DECKS

Protecto Deck protects roof deck surfaces from costly water damage. The system's nominal 70 mil membrane, latex liquid membrane and reinforcing fabric serve as your primary roof deck waterproofing in an installer friendly application. Its peel and stick application with a fabric top coating makes an excellent bonding surface for latex modified thin-set mortars and allows for immediate installation of tile or stone. No more wasted time with complicated installation or waiting for curing. Membrane available in 36" x 50' roll (150 sq. ft.). Protecto LM available in 1 and 5 gallon containers. Protecto LM Reinforcing Fabric available in 7.5" x 50' rolls (31.25 sq. ft.).

FEATURES & BENEFITS

- 30 day exposure rating
- A nominal 70 mil, fully adhered waterproofing system
- Ideal for balconies, sundecks, patios and exterior decks
- Fabric top coating makes an excellent bonding surface for latex modified thin-set mortars
- Florida #27201 approval



PROTECTO DECK™



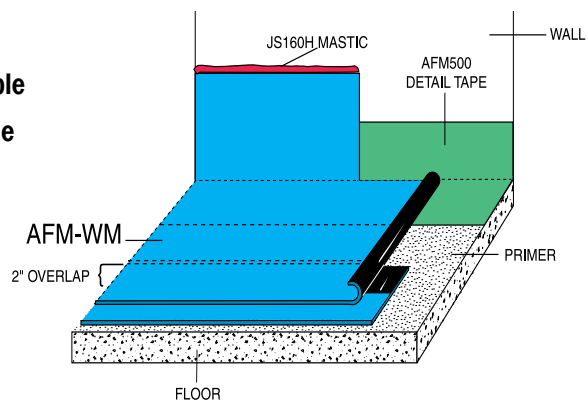
AFM-WM® ANTI FRACTURE WATERPROOFING MEMBRANE

PEEL AND STICK CRACK ISOLATION AND WATERPROOFING FOR TILE

AFM-WM is a 40 mil peel and stick crack isolation sheet waterproofing membrane for use beneath thin-set tile and stone applications. AFM-WM keeps the unsightly reflective cracks (from the expansion and contraction of shrinkage cracks) from surfacing in expensive floor finishes. It is suitable as an anti fracture membrane and for waterproofing shower pan liners, shower walls, decks, kitchen floors and anywhere a waterproof membrane is required beneath thin-set installations. AFM-WM not only protects your flooring investment as a crack suppression membrane, but also incorporates a 2" overlap guide on one side of the sheet. The 2" flood coated lap allows an adhesive-to-adhesive cohesive bond between subsequent sheets of membrane. Once the cohesive bond occurs, AFM-WM turns into a monolithic or single-ply membrane across the entire surface being waterproofed. Available in 36" x 75' roll (225 sq. ft.).

FEATURES & BENEFITS

- For use under thin-set tile, stone and marble
- Incorporates a 2" overlap guide on one side for waterproofing
- Anti fracture resistant to 3/8"
- Aggressive rubberized adhesive
- 30 day exposure rating
- Uniquely thin system (40 mil)



AFM-WM® ANTI FRACTURE WATERPROOFING MEMBRANE

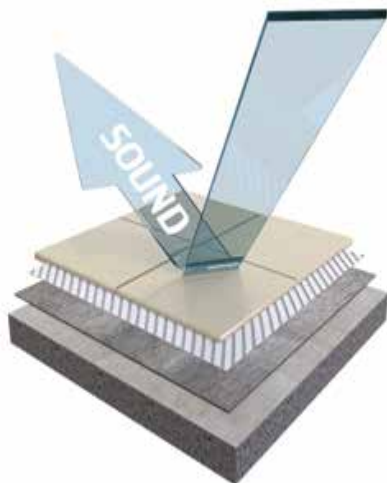


WHISPER MAT® CS

SOUND CONTROL AND CRACK SUPPRESSION MEMBRANE FOR CERAMIC AND NATURAL STONE TILE

Whisper Mat® CS is a peel and stick sheet membrane that reduces impact and airborne sound transmissions, and isolates “finished” flooring from subfloor cracks. Designed for use with ceramic and natural stone tile where sound absorption is required, specified or desired.

The highest performing mat with the thinnest profile, Whisper Mat CS also has the flexibility and strength to withstand structural movement and concrete shrinkage cracks up to 3/8" without transferring the stress load to finished tile. Additionally, excellent moisture resistant properties make this the most comprehensive underlayment product for ceramic and natural stone available. Available in 36" x 40' roll (120 sq. ft.).



FEATURES & BENEFITS

- **Sound reduction ratings:**
 - 6" concrete floor: IIC 50 STC 55
 - Sound transmission reduction: Delta IIC 22
- **Moisture resistant with antimicrobial treatment**
- **Anti fracture resistant to 3/8"**
- **Light commercial load rating**
- **Approved over radiant heated subfloors**
- **Uniquely thin system (110 mil)**
- **Contact Protecto Wrap for additional testing information**

WHISPER MAT® CS



WHISPER MAT® HW

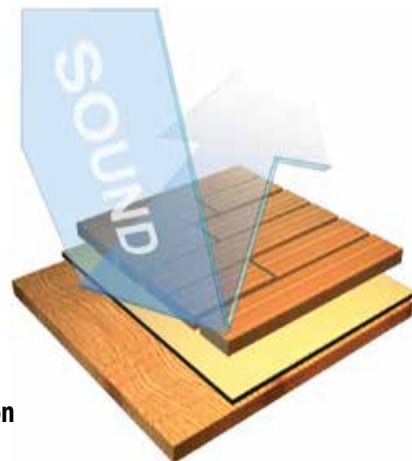
SOUND CONTROL AND MOISTURE RESISTANT MEMBRANE FOR ENGINEERED HARDWOOD, PARQUET AND LAMINATE FLOORING

Whisper Mat® HW is a peel and stick non-permeable sheet membrane, which reduces impact and airborne sound transmissions. Designed for use with engineered wood plank, wood parquet and laminate floors. Used where sound-control is required, specified or desired.

Whisper Mat HW combines sound absorption properties with moisture resistant properties making this an excellent system to enhance flooring installation performance. Available in 36" x 50' roll (150 sq. ft.).

FEATURES & BENEFITS

- **Sound reduction ratings:**
 - 6" concrete floor: IIC 51 STC 52
 - Sound transmission reduction: Delta IIC 22
- **Protects flooring from subfloor moisture/vapor emissions**
- **Easy, installer friendly installation**
- **Commercial and residential applications**
- **Approved over radiant heated subfloors**
- **Uniquely thin system (1/8")**
- **Contact Protecto Wrap for additional testing information**



WHISPER MAT® HW



WHISPER MAT® LVT

PRIMERLESS, PEEL & STICK LUXURY VINYL TILE SOUND CONTROL UNDERLAYMENT

Whisper Mat® LVT is a primerless, peel & stick sheet membrane, which reduces impact and airborne sound transmissions under luxury vinyl and laminate tiles and planks. Used where sound-control is required, specified or desired. Constructed of a 100% virgin latex rubber sheet combined with an aggressive block copolymer adhesive.

Approved substrates include: completely cured concrete, interior plywood, cement backer units and properly prepared OSB. Available in 30" x 80' roll (200 sq. ft.).

FEATURES & BENEFITS

- **Sound reduction ratings:**
 - Luxury vinyl tiles and planks**
 - 6" concrete floor no ceiling: **IIC 57 STC 51**
 - 6" concrete floor with ceiling: **IIC 73 STC 63**
 - Sound transmission reduction: **Delta IIC 27**
 - Laminate tiles and planks**
 - 6" concrete floor no ceiling: **IIC 54 STC 50**
 - 6" concrete floor with ceiling: **IIC 67 STC 63**
 - Sound transmission reduction: **Delta IIC 23**
- **Fastest install with easy, primerless peel and stick installation**
- **CRI Green Label Plus Certified for optimal indoor air quality**



WHISPER MAT® LVT

PEEL AND STICK | PRIMERLESS | CUT-TO-FIT | GROUND WIRED



PEEL AND HEAT CUTTING EDGE™ RADIANT IN-FLOOR HEATING SYSTEM



Peel and Heat Cutting Edge™ is the only peel and stick, primerless, cut-to-fit, ground wired in-floor heating system in an ultra-thin profile. This quick and simple peel and stick mat's length can be cut down to fit the room's layout

right out of the box with no dry or curing time needed. Peel and stick, run the pre-wired mat into the thermostat (sold separately) and then into a designated 20 AMP breaker. Available in 20" x 40", 20" x 64", 20" x 88", 20" x 119", 40" x 40", 40" x 64", 40" x 88" and 40" x 119" sizes. Check with your sales rep for additional sizes.

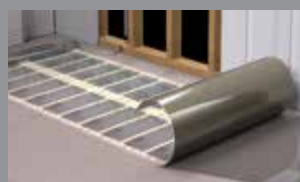
FEATURES & BENEFITS

- **Cut-to-fit length**
- **For use under tile and stone**
- **Fastest install with easy, primerless peel and stick installation**
- **Safe, UL approved ground wired system**
- **Ultra thin profile for smooth room transitions to adjacent floor**

4 EASY INSTALL STEPS



1 Cut to fit and seal



2 Peel and stick



3 Connect wiring and test



4 Install tile

PEEL AND HEAT COMPLETE CUTTING EDGE™

#6000 PRIMER - INDOOR USE



A high tack water based primer concentrate for use in interior applications.

- Quick drying time
- Suitable for interior use
- Excellent adhesion to: steel, concrete, wood and membrane
- VOC compliant
- Available in 16 oz. and 1 gallon containers

#80/1170 VOC PRIMER - EXTERIOR USE



Asphalt SBS solvent based primer for use in horizontal applications under several Protecto Wrap waterproofing products.

- Quick drying with aggressive tack
- Excellent adhesion to: steel, concrete and membrane
- Available in 1, 5 and 55 gallon containers

PROTECTO UNIVERSAL WATER BASED PRIMER™



A high tack water based primer for interior and exterior use on horizontal and vertical surfaces.

- Quick drying with aggressive tack
- Suitable for interior and exterior use
- Suitable for horizontal and vertical applications
- VOC compliant and low odor
- Available in 1 and 5 gallon containers

JS160H MASTIC



A rubberized blend of bituminous and synthetic resins used for sealing detail cuts and membrane terminations.

- Tack free time of 30 minutes
- Excellent adhesion to: steel, concrete and membrane
- Available in 10.5 fluid oz. tube and 1 and 5 gallon containers

AFM500 DETAIL TAPE



Unreinforced conformable sheet used prior to installing AFM-WM for detailing inside corners, drains, posts, protrusions and floor-to-wall transitions.

- SBS modified rubberized asphalt
- 30 mil
- Available in 6" x 50' and 12" x 50' rolls

PROTECTO LIQUID MEMBRANE



An interior and exterior waterproofing elastomeric latex compound used for floor to wall transitions, overlaps and end laps, posts and protrusions, inside and outside corners and at railings as part of the Protecto Deck system.

- Exceeds ANSI A118.10 and ANSI A118.12 standards
- Available in 1 and 5 gallon containers



PROTECTO REINFORCING FABRIC

Waterproofing membrane reinforcing fabric is used as a reinforcing layer at wall to floor transitions and at inside and outside corners as part of the Protecto Deck system.

- Creates a seamless waterproof barrier
- Available in 7.5" x 50' rolls

	#6000 PRIMER	#80/1170 VOC PRIMER	PROTECTO UNIVERSAL PRIMER	JS160H MASTIC	AFM500 DETAIL TAPE	PROTECTO LIQUID MEMBRANE	PROTECTO REINFORCING FABRIC
INTERIOR USE	✓		✓	✓	✓	✓	✓
EXTERIOR USE		✓	✓	✓	✓	✓	✓
USE WITH AFM	✓		✓				
USE WITH AFM-WM	✓	✓	✓	✓	✓		
USE WITH WHISPER MAT CS	✓		✓				
USE WITH WHISPER MAT HW	✓		✓				
USE WITH PROTECTO DECK		✓	✓			✓	✓

ACCESSORY MATERIALS



OTHER BUILDING PRODUCTS FROM PROTECTO WRAP

SEALING THE STRUCTURE FROM BELOW GRADE TO ROOF AND EVERYTHING IN BETWEEN

BUILDING TAPES & FLASHING SOLUTIONS

- Protecto Super Stick Building Tape®
- BT25XL® Window & Door Sealing Tape
- BT20XL Butyl™ Window & Door Sealing Tape
- Protecto Primer-Free Stucco Tape
- Protecto Universal Primer-Free Thru-Wall Flashing
- Protecto Sill Pan Flash™
- Protecto Sill Pan Flash™ Butyl
- Protecto Flex® Window & Door Sealing Tape
- Protecto Form Flash 1
- Protecto Form Flash 2 EPDM
- Protecto Sill Drainage System® (PSDS)
- Protecto Universal Primer-Free Membrane
- Protecto LWM200™
- Protecto CMU100™
- Protecto Seal 45
- Protecto Seal 45 Butyl
- Protecto Deck Joist Tape™

ENERGY SAVING PRODUCTS

- Protecto Triple Guard Energy Sill Sealer®
- Protecto Dual Guard Threshold Tape™
- Protecto Energy Plate Liner®
- Protecto Premium Energy Sill Sealer®

ROOFING SOLUTIONS

- Jiffy Seal Ice & Water Guard Extreme™
- Jiffy Seal® Ice & Water Guard HT 25
- Jiffy Seal® Ice & Water Guard HT
- Jiffy Seal® Ice & Water Guard HT Butyl
- Rainproof-40 & Rainproof-60
- Protecto Roof Edge Seal
- Protecto Roof Deck Seam Tape™
- Tile Flash 30XL & 60XL

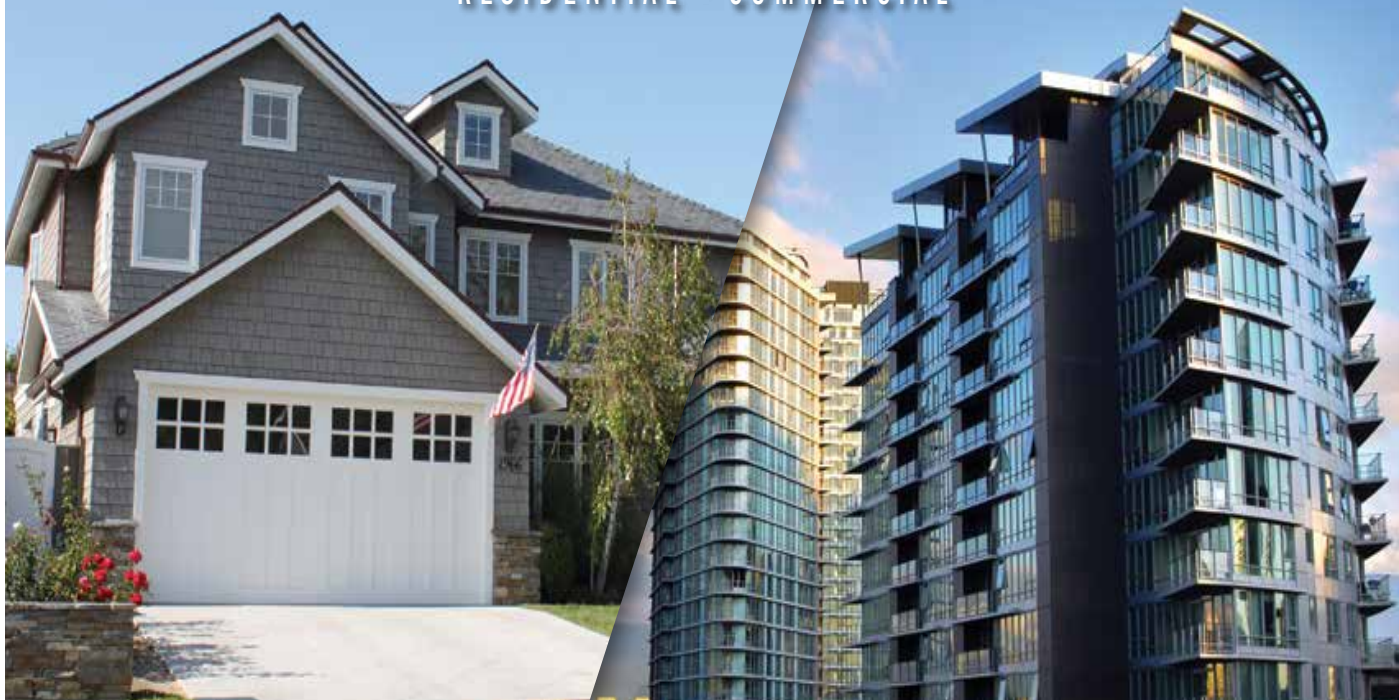
BELOW GRADE & BUILDING ENVELOPE

- Protecto Universal Primer-Free Membrane
- PW 100/40 (Air Vapor Barrier)
- PW 100/60 Waterproofing Membrane
- Jiffy Seal® 140/60 Waterproofing Membrane

PRIMERS & SEALANTS

- #100 VOC Primer
- BT Primer
- Protecto Sealant 25XL
- Protecto Tak Spray Adhesive

RESIDENTIAL · COMMERCIAL



WATERPROOFING DETAILS

Waterproofing details are available at www.protectowrap.com or by calling Protecto Wrap's technical department at 1-800-759-9727.

FLOOD TESTING REQUIREMENTS

All waterproofing applications are required to be flood tested in accordance with ASTM D5957. Documentation must be submitted to Protecto Wrap within 30 days to qualify for warranty.

WARRANTY

All of our products are covered by the Protecto Wrap standard 10 Year Limited Warranty.

SALES REPRESENTATIVES

Protecto Wrap is a proud member of the following trade organizations:



PROTECTO WRAP COMPANY

FLOR-300 (4-20)