



2011 Storm Doors



Professional-Class Storm Doors

Every storm door is individually customized to the highest standards in the residential market for homeowners who appreciate impeccable, uncompromising quality.



Storm Door Paint Colors

To select paint color, refer to our color selector for accurate color representation.

Snow Mist	Cafe Cream	Chateau	Sandpiper Beige	Sandstone
Sterling Gray	Clay	Geneva Blue	Forest Green	Mountain Berry
Rustic Bronze	Tudor Brown	Coal Black		

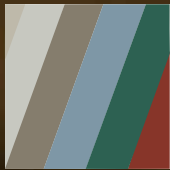
Limited Colors

Available on entry doors and storm doors. Matching cladding and caulking not available.

Primrose Yellow	Enzian Blue	Vallis Red
-----------------	-------------	------------



Storm Door Construction



Durable, oven-baked polyester finishes are backed by a Lifetime Warranty for lasting beauty and low maintenance.



Extruded aluminum frame adds beauty to your door by virtue of the rounded **cove molding along the glass edge** of the extrusion.

All our storm doors are constructed with **tempered safety glass**.



You'll appreciate the finished look of our **color matched aluminum installation screw covers**.

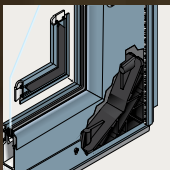
Each door features **quality hardware** that adds beauty and functionality to your new storm door. Varies by model.



Sashes are secured by our **color matched polycarbonate clips or an internal sash lock system**. Varies by model.



Smooth function is essential. That's why we include a **quality door closer** in every storm door package. Varies by model.



Corrosion proof corner gussets enhance the structural integrity of the door.

Color matched bottom expanders allow for a beautiful custom fit to any entry.



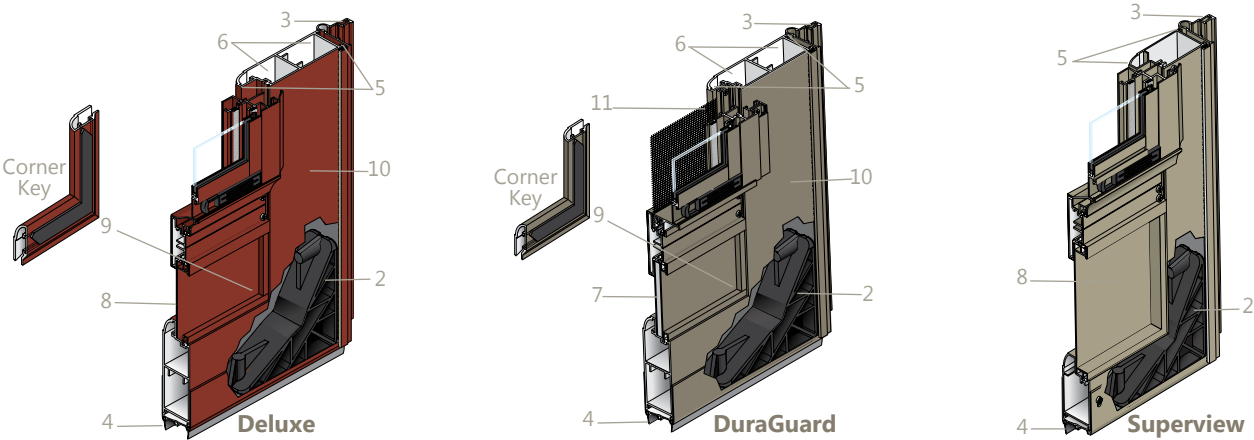
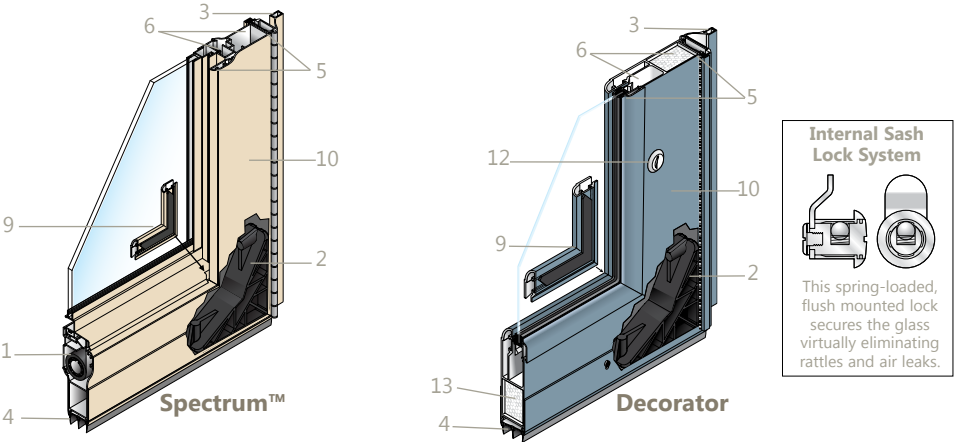
Our bottom expander with sweep allows for adjustment to ensure a snug fit as needed. Varies by model.




Storm Door Details

are the small things that set our storm doors apart from the competition.
A lot of small things add up to a big difference!

Storm Door Construction



Construction	Spectrum™	Decorator	Deluxe	DuraGuard	Superview
1 InVent™ Retractable Screen System	●				
2 Outside corners are secured to corrosion proof gussets, for structural integrity	●	●	●	●	●
3 Color matched aluminum installation screw covers enhance the appearance of your door	●	●	●	●	●
4 The bottom sweep eliminates drafts	Triple	Triple	Double	Double	Single
5 The sculptured frame adds durability	1¼" x 4 3⁄16"	1¼" x 4"	1¼" x 3 5⁄8"	1¼" x 3 5⁄8"	1¼" x 2 5⁄8"
6 Multi-hollow construction provides greater strength and security than standard storm doors	●	●	●	●	
7 The reinforced aluminum kick panel adds durability	●			●	
8 The aluminum kick panel resists rust and adds strength			●		●
9 Corner keys provide added support to the inside of the door frame	●	●	●	●	
10 Aluminum wall thickness up to 20% thicker than industry standard	●	●	●	●	
11 The .023 gauge stainless steel screen offers extra security and protection (12 x 12 mesh)				●	
12 Sash/Screen secured by internal lock system or color matched polycarbonate clips		Internal Lock	Clips	Clips	Clips
13 Standard insulated frame core offers increased energy efficiency		●			
14 Screen included	●	Optional	●	●	●



***Our storm doors
excel in Beauty,
Durability,
Security and
Energy Efficiency.
And we offer a
Lifetime Limited
Transferable
Warranty on all
our storm doors!***



Spectrum™ storm doors

Spectrum Series brings you smooth functionality, beauty and durability. Our exclusive top and bottom InVent™ retractable screen system allows you more venting options than ever!

Spectrum Storm Doors Include:

- Two InVent™ retractable screens with Compound Tension sashes
- Triple seal bottom sweep
- 1¼" x 4⅜" wide sculptured frame



#296-B Full View Double Prairie with Beveled Glass and Brass Inlay



#296-Z Full View Double Prairie with Beveled Glass and Zinc Inlay*



#295 Full View Double Prairie with Beveled Glass



#291 Full View*
* Inspirations Glass available in #291 Full View



#298-B Three-quarter View with Beveled Glass and Brass Inlay



#298-Z Three-quarter View with Beveled Glass and Zinc Inlay*



#298-VG Three-quarter View with Beveled Glass



#298 Three-quarter View



#292 Provincial Half-Lite



#293 Crossbuck Half-Lite

INSPIRATIONS™
art glass

A ProVia Door Exclusive!



#279 Flush Half-Lite



#291SH Full View



#298SH Three-Quarter View



#274SH Half-Lite



#298-COS Cosmopolitan (Sedona)*



#298-AZT Aztec (Coral Reef)*



#298-TUL Tulips (Vineyard)*

Ask to see our Inspirations Art Glass brochure for our complete selection of designs, color palettes, and style availability.

Standard Hardware & Accessories

Bright Brass Sierra solid brass mortise hardware*

Bright Brass piano hinge*

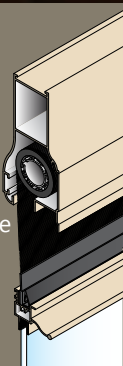
1½" brass-look bottom expander*

Color matched dual closers

For accurate color representation, refer to the Color Selector.

* Satin Nickel hardware, piano hinge and bottom expander are standard on Spectrum storm doors with zinc caming and Inspirations Art Glass.

Featuring
top and
bottom
InVent™
Retractable
Screens



***Forget about the
hassle of removing
and storing your
storm door screens.
Spectrum screens
are stored inside the
storm door frame.***



Decorator series

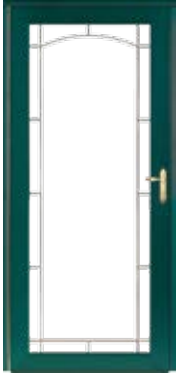
provides a stylish, fresh look to accent your entry. Select one of the distinct styles from our Decorator Series storm doors.

Decorator Storm Doors Include:

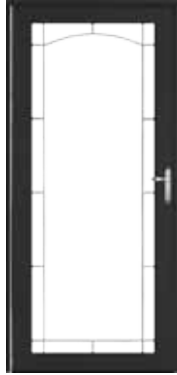
- Triple seal bottom sweep
- 1¼" x 4" wide sculptured frame



#591 Full View Archway with Beveled Glass



#593-B Full View Archway with Beveled Glass & Brass Inlay



#593-Z Full View Archway with Beveled Glass & Zinc Inlay*



#595 Full View Double Prairie with Beveled Glass



#596-B Full View Double Prairie with Beveled Glass & Brass Inlay



#596-Z Full View Double Prairie with Beveled Glass & Zinc Inlay*



#590 Full View

A ProVia Door Exclusive!



Ask to see our Inspirations Art Glass brochure for our complete selection of designs, color palettes, and style availability.



590-SYN Synergy (Vineyard)*



590-VIN Vintage (Timberland)*

Optional full screen with horizontal stabilizer bar available for all Decorator doors.

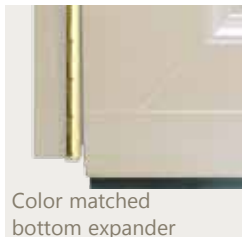
Standard Hardware & Accessories



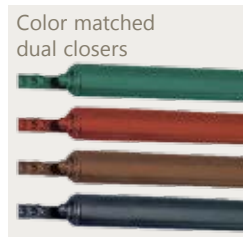
Bright Brass Windsor hardware*



Bright Brass piano hinge*



Color matched bottom expander



Color matched dual closers

For accurate color representation, refer to the Color Selector.

* Satin Nickel hardware and piano hinge are standard on Decorator storm doors with zinc coming and Inspirations Art Glass.





Deluxe_{series}

is the answer whether you're looking for additional light, ventilation or protection from the elements. You'll find the exact style you're looking for in our Deluxe Series of storm doors.

Decorator Storm Doors Include:

- Double seal bottom sweep
- 1¼" x 3⅝" wide sculptured frame



#385 Full View Double Prairie with Beveled Glass
Includes screen*



#382 Full View with Beveled Glass
Includes screen*



#397 Full View
Includes screen*



#391 Full View Divided Lite
Includes top screen



#396-V One-Lite with fixed .023 gauge stainless steel screen ventilated bottom & removable sash
Includes top screen*



#396 One-Lite
*Includes screen



#399 Self-Storing
*Includes full screen



#398 Hi-Lite
Includes top screen



#389 Self-Storing
*Includes full screen



#392 Provincial Self-Storing
*Includes full screen



#394 Provincial
Includes screen



#393 Crossbuck Self-Storing
*Includes full screen



#395 Crossbuck
Includes screen



#379 Self-Storing
*Includes full screen

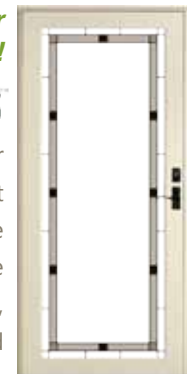


#374 Flush Half-Lite
Includes screen

A ProVia Door Exclusive!

INSPIRATIONS[™]
art glass

Ask to see our Inspirations Art Glass brochure for our complete selection of designs, color palettes, and style availability.



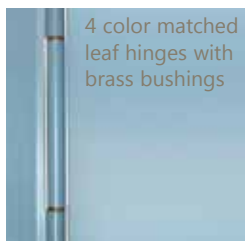
#397-VIN
Vintage (Timberland)

* Full and One-Lite screens have horizontal stabilizer bar.

Standard Hardware & Accessories



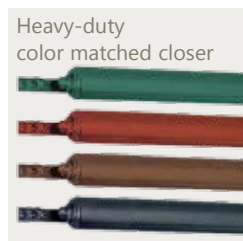
Black Contemporary Curve lever with deadbolt



4 color matched leaf hinges with brass bushings



Color matched bottom expander



Heavy-duty color matched closer

For accurate color representation, refer to the Color Selector.



Beveled glass is just one of many ways you can customize your storm door and add elegance.

DuraGuard^{series}

is exactly what you need if you're concerned about keeping your small children and pets safely inside, select one of our doors with heavy-duty non-removable stainless steel screening.

DuraGuard Storm Doors Include:

- Double seal bottom sweep
- Fixed .023 stainless steel screen
- 1¼" x 3⅝" wide sculptured frame



#097 Screen Door
#097-G With glass insert



#096 Screen Door
#096-G With glass insert



#096-GV With ventilated bottom and removable top and bottom sashes



#099 Self-Storing Sash & screen



#074 Flush Half Lite (Removable sash)



#094 Provincial Half Lite (Removable sash)



#095 Crossbuck Half Lite (Removable sash)



#092 Provincial Self-Storing Includes full screen



#093 Crossbuck Self-Storing Includes full screen

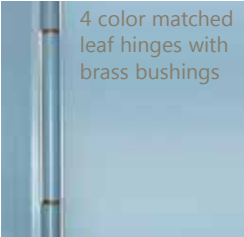


#079 Self-Storing Includes full screen

Standard Hardware & Accessories



Black Contemporary Curve lever with deadbolt



4 color matched leaf hinges with brass bushings



Color matched bottom expander



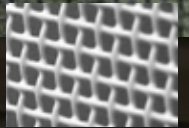
Heavy-duty color matched closer

For accurate color representation, refer to the Color Selector.





.023 stainless
steel black
screen is
standard



Also available
in white

Superview series

offers a selection of storm doors constructed for style and value in one complete package.

Superview Storm Doors Include:

- Single seal bottom sweep
- 1¼" x 2⅝" sculptured frame



#897 Full View
Includes screen*



#896 One-Lite
Includes screen*



#898 Hi-Lite
Includes top screen



#899 Self-Storing
Includes bottom
screen



#895 Crossbuck
Includes screen

Superview storm doors are available in the following colors only:

Snow Mist	Cafe Cream	Rustic Bronze	Tudor Brown
-----------	------------	---------------	-------------

Standard Hardware & Accessories



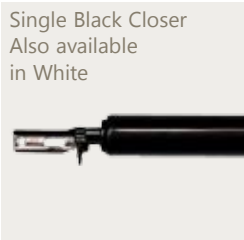
Black Pull Handle
Also available
in White



4 color matched
leaf hinges with
brass bushings



Color matched
bottom expander



Single Black Closer
Also available
in White

For accurate color representation, refer to the Color Selector.





Mortise Hardware

adds a special touch to your storm door with a solid brass handleset to suit your style. Our mortise hardware conveniently allows you to use the same key for your storm door and your ProVia entry door!

Sierra (Solid Brass Mortise)



Sierra (Solid Brass Mortise)



Hardware Finish Availability					Hardware Availability				
Exterior Handle Styles	LIFETIME Bright Brass	LIFETIME Satin Nickel	LIFETIME Aged Bronze	10-Year Finish Antique Brass	Spectrum™	Decorator	Deluxe	DuraGuard	Superview
Sierra	●	●	●	●	Standard	■	■	■	
Venice	●	●	●	●	■	■	■	■	

● Interior handle finish matches exterior handle ■ Available as an option

Mortise hardware requires a factory handleset prep and is not available on expander and double french doors.



Our mortise hardware features a multi-point locking system for added strength and security not found on typical consumer-grade storm door hardware.



Hardware

With both elegance and durability, our hardware makes the right first impression. Choose from our wide selection of solid hardware to customize your storm door.

Exterior Handles

Windsor



Townsend



Contemporary Curve Lever



Push Button



DH 201



DH 202/192



DH 181



DH 182

Pull Handle

Interior Handles



Windsor
Townsend
Contemporary Curve



Push Button
(DH201 & DH202)



Push Button
(DH192)
Pull Handle

Hardware Finish Availability

Exterior Handle Styles	LIFETIME Bright Brass	LIFETIME Satin Nickel	LIFETIME Aged Bronze	1-Year Antique Brass	1-Year White	1-Year Black	Spectrum™	Decorator	Deluxe	DuraGuard	Superview
Windsor	●	●	●				■	Standard	■	■	■*
Townsend	●	●	●				■	■	■	■	■*
Contemporary Curve	●	●	●	●	●	●	■	■	Standard †	Standard †	■*
Push Button (DH201 & DH202)					●	●			■	■	■*
Push Button (DH192)						●					■
Pull Handle					●	●					Standard

● Interior handle finish matches exterior handle ■ Available as an option † Standard color is black or white * Not available on Superview Model #899

Storm Door Accessories

can add a touch of class to your new look.

Freedom Pet Door

Factory Installed -
Available on Flush Doors Only

- Solid aluminum construction with spring loaded interior cover
- Soft single flap for a tight weather seal
- White mitered aluminum frame with white aluminum cove
- Also available on entry doors
See page 74 of the ProVia Door Catalog
- Also available on additional storm door styles. See page 118 of the ProVia Door Price List



#279 Flush Half-Lite
with Pet Door Option

#379 Self-Storing
with Pet Door Option
Includes full screen



Medium
8 $\frac{3}{8}$ " x 11 $\frac{3}{4}$ " opening for pets up to 40 lbs.

Large (shown)
10 $\frac{3}{8}$ " x 15 $\frac{3}{4}$ " opening for pets up to 100 lbs.

Piano Hinge and Bottom Expander



Brass-look piano hinge
and brass-look bottom expander



Satin Nickel
piano hinge
and Satin Nickel
bottom expander



Aged Bronze
piano hinge and
Aged Bronze
bottom expander

Easy-Set Closer



Just a slight push on the cap and it'll stay open.
Push door open further and it releases. Color matched
to door.

Magazine & Mail Slot



Bright Brass, Satin Nickel and
Aged Bronze magazine and
mail slots. Available on #074,
#079, #279, #374 and #379.



Distributed by:

 **ProVia**[®] Door
THE PROFESSIONAL WAY
www.proviadoor.com