



**PACIFIC MAT & COMMERCIAL FLOORING**

*Providing Flooring Solutions for over 50 years*

# MATTING DESK REFERENCE GUIDE 2011



**1-800-345-MATS**

(1-800-345-6287)

**info@pacmat.com**

CONTACT US FOR QUOTES



General Inquiries

**Jennifer Hart:**  
jennh@pacmat.com

**Kelli Mower:**  
kellim@pacmat.com

**Michelle Miller:**  
michellem@pacmat.com

**Shannon Sweet:**  
ssweet@pacmat.com

Logo Mats

**Latricia Evans:**  
latriciae@pacmat.com

**Pam Phillips:**  
pamp@pacmat.com

Quotes

**Lance Koler:**  
lancek@pacmat.com

***Call us Today at 1.800.345.MATS***



### **Indoor:**

Pacific Traditional.....	6
Pacific Plush.....	7
Pacific Classic.....	8
Tire Tile.....	9
Water Hog.....	10
Logo Matting.....	11
Alison T. Seymour, Inc.....	12

### **Outdoor:**

Quill-Tuft Matting.....	13
-------------------------	----

### **Indoor/Outdoor:**

Eco Berber.....	14
Turtle Tile.....	15
Connexus—Super Nop 52 ( <i>Hercules Nop</i> ).....	16
Boston Kenmore.....	17
Boston Fenway.....	18
Protect In.....	19
Perfect Mat Rubber Hinge.....	20
Perfect Roll Up.....	21
Perfect Grate & Mat Insert Colors.....	22

### **Floor Protection:**

Clear Carpet Protector.....	23
-----------------------------	----

### **Fatigue Relief Flooring:**

Honey Eze.....	24
Cushion Step.....	25
Tough Sponge.....	26

### **Specialty Products**

Non-Slip Underlay/Edging/Seaming.....	27
---------------------------------------	----



## **ARMSTRONG Commercial Products**

Linoleum  
Sheet Vinyl  
VCT, BBT, LVT  
Laminate  
Adhesives & Floor Finishes

## **ARMSTRONG Residential Products**

Sheet Vinyl  
Alterna  
Luxe  
Laminate  
Hardwood

## **Entranceway & Lobby Systems**

Custom Logo Mats  
Mats, Inc, Super Nop 52 (Hercules NOP), Protect In (Protect Super)  
Interlocking Modular Tile  
Recycled Tire Tile  
Roll Up Grate Matting & Grates

## **Walk Off Mats**

An extensive offering of Specialty Mats and Tiles  
Anderson Waterhog

## **Specialty Products**

JOHNSONITE Rubber Flooring, stairwells and base  
Alison T. Seymour  
WICANDERS Cork

## **Sports Floors**

Gym Shield, Gym Dandy  
JOHNSONITE Replay, Triumph and Inertia

## **LEED/Green-Renewable or Recycled Products**

ARMSTRONG Linoleum, Sheet vinyl, LVT, BBT, and VCT

JOHNSONITE Replay

JOHNSONITE Replace demountable wall base (no adhesives and reusable)

JOHNSONITE Wall Base

JOHNSONITE ECO SHELL with Cork

JOHNSONITE CORKTONES

Recycled Rubber Weight Tile

US Rubber Survivor Rolls and Tile

Tirex Tire Tile

### **MultiLino FM Linoleum Gym Floor**

PERGO Laminate Flooring

Turtle Tile Modular Tiles

WICANDERS Cork Flooring

Alison T Seymour Seagrass, Sisal, Jute and Coir Rugs

Aluminum foot grills





# SHADES OF DISTINCTION

## Pacific Traditional

**Good**

◆ Economical olefin, heather-colored wiper mat on standard vinyl for light / medium applications

**Thickness:** 3/8"

**Backing:** Thermoflex vinyl

**Top Fibers:** Continuous  
Filament Olefin

**Colors:** Walnut, Pebble  
Brown, Charcoal, Mid-Gray,  
Navy Blue, Marlin Blue,  
Evergreen, Burgundy,  
Castellan Red, Midnight,  
Black

**Sizes-Mats:** 2'x3', 3'x4',  
3'x5', 3'x6', 3'x10', 4'x6',  
4'x8', 4'x10'

**Size-Rolls:** 3'x60', 4'x60',  
6'x60'

**Custom Sizes:** 3', 4', 6'  
widths

### **Benefits:**

- ◆ Economical Olefin Mat
- ◆ Plush surface dries  
moisture from shoes
- ◆ Able to hold 3/4 gallon of  
water per square yard





# SHADES OF DISTINCTION

## Pacific Plush

**Better**

◆Plush olefin, heather-colored wiper mat on standard vinyl for medium/heavy applications

**Thickness:** 7/16"

**Backing:** Thermoflex vinyl

**Top Fibers:** Continuous Filament Olefin

**Colors:** Walnut, Pebble Brown, Charcoal, Mid-Gray, Navy Blue, Marlin Blue, Evergreen, Burgundy, Castellan Red, Midnight, Black

**Sizes:** 2'x3', 3'x4', 3'x5', 3'x6', 3'x10', 4'x6', 4'x8', 4'x10'

**Sizes-Rolls:** 3'x60', 4'x60', 6'x60'

**Custom Sizes:** 3', 4', 6' widths

**Benefits:**

- ◆Able to hold a gallon of water per square yard
- ◆Fade and stain resistant





# SHADES OF DISTINCTION

*Pacific Classic*

**Best**

◆ **Plush olefin, heather-colored wiper mat on heavy-duty vinyl for the more demanding commercial applications**

**Thickness:** 1/2"

**Backing:** Thermoflex vinyl

**Top Fibers:** Continuous Filament Olefin

**Colors:** Walnut, Pebble Brown, Charcoal, Mid-Gray, Navy Blue, Marlin Blue, Evergreen, Burgundy, Castellan Red, Midnight, Black

**Sizes-Mats:** 2'x3', 3'x4', 3'x5', 3'x6', 3'x10', 4'x6', 4'x8', 4'x10'

**Size-Rolls:** 3'x60', 4'x60', 6'x60'

**Custom Sizes:** 3', 4', 6' widths

## **Benefits:**

- ◆ High performance with maximum capacity, holding up to a gallon of water per square yard
- ◆ Dries three times faster than nylon or polyester
- ◆ Resists Stains
- ◆ Solution dyed for bright, long-lasting color
- ◆ Logo Friendly







# TIRE TILE



*95% Recycled Content*



Environmentally friendly, made from post consumer bias-ply tires. Attractive carpet-like surface provides a touch of luxury in areas of frequent foot traffic. Traps dirt, absorbs moisture, and protects floors.

Meets Federal flammability regulations DOC FF 1-70. According to AMCIC Test, Tire-Tile exceeds the minimum char radius of 3" Average car, per 8 strips tested, .75" radius.

**Material:** Rubberized fabric strips with chenille like surface out from recycled tires bonded to a non flammable base.

**Thickness:** 3/8"

**Sizes:** 12"x12", 12"x25'

### RECYCLED CONTENT PER TILE

Size	Rubber/Tile	Tires/Tile	1 Tire
12" x 12"	2 lbs.	.07	15 Tiles

1 Tire = 30 lbs





*We make buildings greener*

# WATERHOG™



**Fiber:** 100% Post Consumer Recycled P.E.T Polyester from Drink Bottles

**Backing:** 15% Post Consumer Recycled Rubber From Tires

**Colors:** Black Smoke, Indigo, Southern Pine, Grey Ash, Maroon, Khaki, Chestnut Brown, Regal Red



Black Smoke



Indigo



Southern Pine



Grey Ash



Maroon



Chestnut Brown

Khaki

Regal Red

## Premier

**Fiber Type:** Solution-dyed recycled PET polyester, recycled from soda bottles

**Weight:** 30 ozs/sy

**Nub Height:** 3/8"

**Design:** Diamond

### **Backing:**

Type: 100% SBR Rubber (15% Recycled content)

Thickness: .160"-Border

.190"-Nubs

.050"-Between Nubs

**Durometer:** 60

**Tensil:** 600 PSI

## Elite

**Fiber Type:** Solution-dyed 100% Post consumer recycled PET polyester, recycled from soda bottles

**Weight:** 30 ozs/sy

**Nub Height:** 3/8"

**Design:** Herringbone

### **Backing:**

Type: 100% SBR Rubber (15% Post Consumer Recycled Rubber from Tires)

Thickness: .160"-Border

.190"-Nubs

.050"-Between Nubs

**Derometer:** 60

**Tensil:** 1100 PSI



# LOGO MATTING



We provide custom logo mats and Inlay Logo Mats utilizing a state of the art Ultra Sonic Cutting Machine. The machine's capabilities will cut all types of flooring products (ie: vinyl tile, sheet goods, carpet, vinyl backed materials and rubber backed materials.) Customers either supply us with the product to cut or we provide our products from start to finish. Provide digital artwork if possible.



**To Order All Custom Mats:**  
Call: 1-800-345-6287  
or email: [info@pacmat.com](mailto:info@pacmat.com)



# ALISON T. SEYMOUR, INC.



## Jute Tibet

- ◆Tibet



## Woven Grasses

- ◆Mountain Grass
- ◆Seagrass Triple Weft
- ◆Seagrass



## Sisal Small Boucle

- ◆Anthracite
- ◆Beige
- ◆Brown Sugar
- ◆Camel
- ◆Coffee
- ◆Rice
- ◆Smoke
- ◆Sorrel
- ◆Vanilla



## Coir Brush Matting





# QUILL-TUFT MATTING

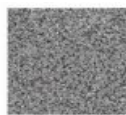
Patented *Brush-Like* scraping fibers



Charcoal  
Black



Chocolate



Dark Gray



Natural



Dark Green



Sea Green



\* Midnight  
Blue



\* Red/Black



\* White

\* available in 3/8" only

## Description:

Aggressive, nonshedding mat for outdoor use. Now easier than ever to clean, new Quill Tuft provides superb brush action to scrub dirt and moisture from shoes. Crush-resistant filaments trap moisture beneath the surface until evaporated, and resist mildew and insects. Built-in crimps catch dirt and create a superior colorfast, weatherproof matting.

**Material:** Polypropylene with textured vinyl backing

**Thickness:** 3/8" 36oz. Face wt/ 130oz. Total wt.  
5/8" 45oz. Face wt/ 167 oz. Total wt.

**Size:** 72" wide, and up to 60' long



# eco BERBER



**Fiber:** Solution-dyed 100% Post Consumer Recycled PET Polyester, recycled from soda bottles

**Weight:** 45 ozs/sy

**Thickness:** Hobnail

**Design:** Hobnail

**Type:** 100% Natural Rubber Latex 38 oz/sq yrd

**Size:** Available in 6' and 12' rolls or custom sizes

◆ Eco Berber colors match Waterhog Eco Elite Roll Goods colors so both fabrics can be used in side by side installation.

◆ Comes with borders and with out.

Eco Berber roll goods are manufactured with 100% post consumer recycled PET Polyester fiber reclaimed from plastic bottles and a natural rubber backing. This new entrance product comes standard in 6'x50' and 12'x50' rolls and is available in rolls or custom sizes up to 18'x100'. Eco Berber roll goods are ideal for large entrance area installations where other mats just aren't big enough.



Black Smoke



Chestnut Brown



Grey Ash



Khaki



Maroon



Southern Pine

# TURTLE TILE



## **Description:**

Turn wet surfaces into dry, safe, sanitary, and easy-to-clean walkways, slow the spread of infectious mold, mildew, and bacteria, and prevent tripping from uneven floors. Weather, chemical, and flame-resistant. Available in a variety of surfaces to fit almost any area—use in health clubs, aerobic areas, saunas, pool decks, sun decks, walkways, and boats.

## **Material:**

100% recycled PVC plastic

## **Thickness:**

3/4", approximately

## **Colors:**

Taupe, White, Tan, Brown, Yellow, Orange, Red, Burgundy, Purple, Pool Blue, Dark Blue, Green, Forest Green, Light Gray, Dark gray

## **Size:**

Interlocking Tile— 12"x12"  
Edge Ramp— 12"x2"  
Corner— 14"x2"



**Warranty:**  
Limited 5 year



# CONNEXUS - SUPER NOP 52

## (HERCULES NOP)



**Commercial Floorcovering for indoor and outdoor applications**

**Construction:** Non-Woven (Spike-resistant NP)

**Pill Test:** Passed (DOC-FF-1-70)

**Texture:** Hobnail Pattern

**Stain Resistance:** Solution-dyed Fiber

**Pattern Repeat:** Non Face Fiber: 100% ASOTA Polypropylene

**Face Weight:** 52 oz per sy

**Total Weight:** 93 oz per sy

**Width:** 13.2 and 6.7

**Roll Length:** 101.8 approximate or 50'

**Backing:** Natural/Synthetic Composite Rubber

**Total Height:** 3/8 inch Variable

**Usage:** Indoor/Outdoor

**Material:** Nonwoven Tough Rib, Blend of 17-24-DPF Solution Dyed UV Stabilized ASOTA Polypropylene



ALL COLORS AVAILABLE IN ROLLS 13'2" and 6'7"  
8 COLORS AVAILABLE IN TILES (T)





# BOSTON KENMORE



## Features:

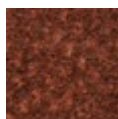
- **One of the most resilient mats on the market. Resists crushing and stands up to demanding traffic.**
- **Rich, luxurious nylon fibers provide outstanding moisture absorption.**
- **Colorfast, solution-dyed fibers brush away fine debris, salt and sand.**
- **Common Uses: high traffic vestibules; foyers; lobbies; hallways; retail environments.**



BLUE



BROWN



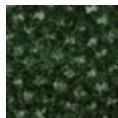
CINNAMON



CHARCOAL



GRAY



FOREST GREEN

**Material:** 100% Premium Polyamide Nylon Fibers (6.6)

**Total Weight:** 107.4oz

**Overall Thickness:** 3/8"

**Backing:** Premium SureTac Vinyl

**Additional Specs:** Solid Design; Custom Logos optional

**LEED:** Possible LEED-NC credits

**Recycled Content:** 10% post-consumer

## SIZES:

Roll—6'7"X82'

Custom—6'7" width by custom lengths to 82' roll width includes 1" vinyl edge on each roll side; may be trimmed off for glue down applications



# BOSTON FENWAY

## Features:

- **One of the most resilient mats on the market. Resists crushing and stands up to demanding traffic.**
- **Rich, luxurious nylon fibers provide outstanding moisture absorption.**
- **Colorfast, solution-dyed fibers brush away fine debris, salt and sand.**
- **Common Uses: high traffic vestibules; foyers; lobbies; hallways; retail environments.**

**Material:** 100% Premium Polyamide Nylon Fibers (6.6)

**Total Weight:** 107.4oz

**Overall Thickness:** 3/8"

**Backing:** Premium SureTac Vinyl

**Additional Specs:** Solid Design; Custom Logos optional

**LEED:** Possible LEED-NC credits

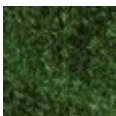
**Recycled Content:** 10% post-consumer



Blue



Cinnamon



Forest Green



Brown



Charcoal



Gray

## SIZES:

Roll—6'7"X82'

Custom—6'7" width by custom lengths to 82' roll width includes 1" vinyl edge on each roll side; may be trimmed off for glue down applications

# PROTECT IN (PROTECT SUPER)



CHARCOAL



DARK GRAY



COCOA



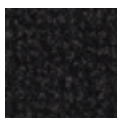
BROWN



BLUE



RED



CHARCOAL SPLASH

## Features & Benefits:

- **The most aggressive scraping product in our Roll Goods collection**
- **Coarse, bristle-like fibers effectively brush shoes clean, trapping dirt in the mat**
- **Rich vibrant color selection**
- **Common Uses: outdoor or indoor settings; entrances, foyers, vestibules, lobbies**

**Material:** 100% Premium Polyamide Nylon Fibers (6.6) with 10% post-consumer recycled content

**Total Weight:** 99oz/sq. yd.

**Overall Thickness:** 3/8"

**Backing:** Premium SureTac Vinyl

**Recommended Installation:** Loose Lay

**LEED:** Possible LEED-NC credits

**Recycled Content:** 10% post-consumer

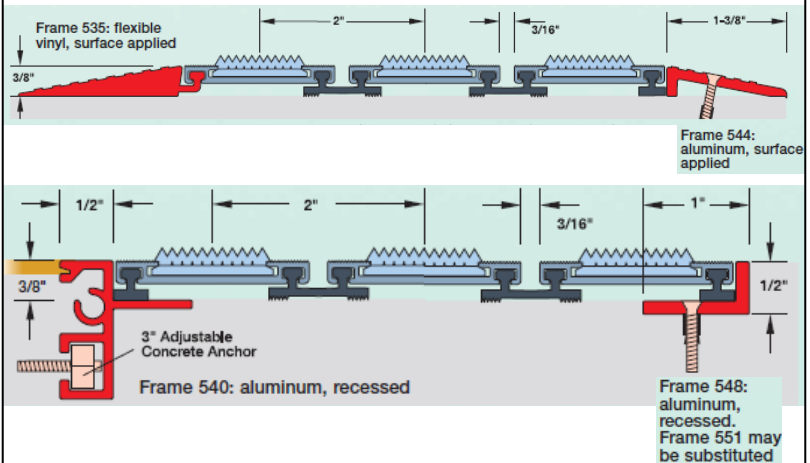


# PERFECT MAT<sup>®</sup>-RUBBER HINGE



## Specification:

Roll-up mat shall be Reese Perfect Mat - specify number \_\_\_\_\_, specify tread insert \_\_\_\_\_. Tread rails shall be 6063-T52 aluminum spaced 2" on center and connected with polypropene thermoplastic rubber hinge with 1" x 3/16" slotted holes for maximum drainage. 300 lbs./wheel rolling load weight capacity. Please consult factory for specific product line art drawing profiles and specifications.



Colors on page 18



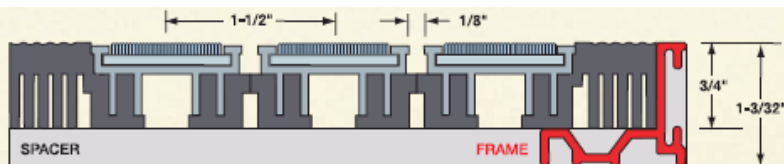


# PERFECT ROLL UP-3/4" ROLLUP GRATE

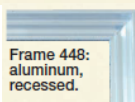
Best of both worlds — Reese Roll-Up Grate features the rugged benefits of a grate with the easy maintenance of a mat. Handles rolling loads up to 1,000 lbs. per wheel —yet lifts and rolls up for easy maintenance. Rugged thermoplastic hinge/footpad is weather resistant — remains flexible down to -30o F. Won't crack, break or become brittle like PVC based materials.



Specification: Heavy Duty Rollup Grate shall be Reese Heavy Duty 3/4" Rollup Grate specify number \_\_\_\_\_, specify tread insert \_\_\_\_\_. Tread rails shall be 6105-T5 aluminum spaced 1-1/2" on center and connected with thermoplastics hinge/footpad 1" x 1/8" slotted holes for maximum drainage. Withstands 1,000 lbs. wheel load weight capacity. Please consult factory for specific product line drawing profiles and specifications.



Colors on page 18



An aluminum frame for recessed applications (see left) is also available

Frame 448: aluminum, recessed.



# PERFECT GRATE & MAT INSERT COLORS

## Carpet



## Polypropylene Brush



## Diamond Peak Vinyl



## Vinyl Abrasive

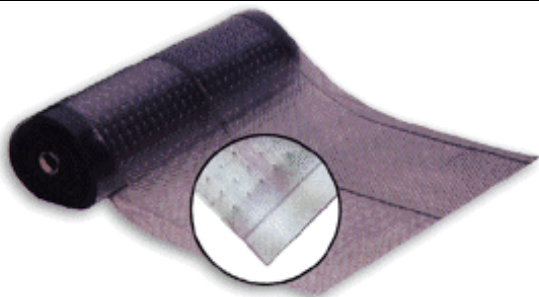


## Anodized Aluminum





# CLEAR CARPET PROTECTOR



**FEATURES:** Clear Carpet runners are transparent, heavy duty, industrial quality plastic matting products. They are designed to protect and enhance the decorative beauty and quality of fine carpets and other flooring products.

**BENEFITS:** Protects rugs and carpets against dirt, grime, grit, sand and moisture during periods of foul weather. Makes expensive carpets last longer. Saves maintenance time. Reduces replacement costs. Decreases excessive wear in high traffic areas.

**APPLICATIONS:** Homes, offices, entryways, hallways, staircases...almost any indoor application.

**Material:** 100% Vinyl

**Color:** Clear Only

**Sizes:**

**Commercial:** 20yd. Rolls x 27", 36", 48 wide

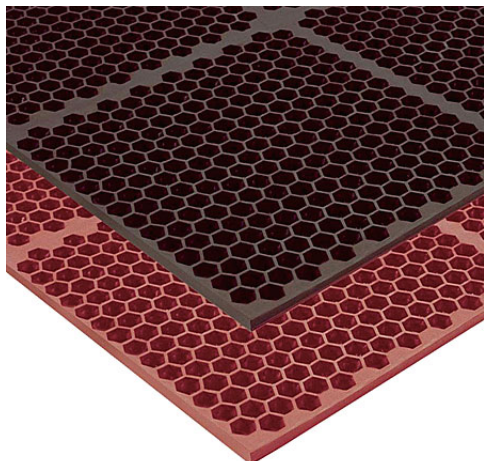
**Weight:** 50 lbs; 86; and 112 lbs. (per carton)



Warranty: 1 year



# HONEY EZE



**Description:**

A lightweight, honeycomb Anti-Fatigue mat that provides sure footing and relief in industrial and commercial environments. Two styles for various applications.

**Material:** Rubber

**Colors:**

Grease-resistant Brown– for kitchens (meets NSF standards)

Greaseproof Red– for heavy grease exposure (meets NSF standards)

**Thickness:** 5/8” approximately

**Size:** 3’x6’, 3’x4’, 3’x3’, 3’x2’





# CUSHION STEP



## Description:

Soft and comfortable, this high-quality Anti-Fatigue mat is our most popular matting for work stations, assembly areas, service counters, cashier, and pharmaceutical applications. Also available in Industrial Vinyl surfaces for slip resistance. Finished with beveled edges and rounded corners.

## Material:

Smooth rubber or vinyl laminated to foam backing

**Thickness:** 1/2" approximately

## Size:

18"x30", 24"x36", 36"x60" and custom sizes  
36" or 48"- Rubber/ 24", 36", 48" or 72" Width



## Colors:

- ◆Marbleized Black
- ◆Solid Black Vinyl
- ◆Dark Gray
- ◆Blue



# TOUGH SPONGE

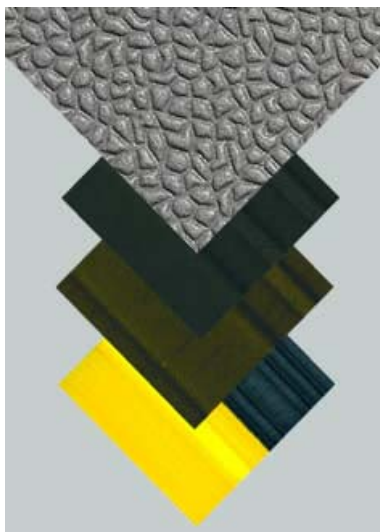
**Closed-cell PVC sponge matting offers comfortable and economical fatigue relief**

**Benefits:**

Available in two slip-resistant surfaces: pebble and ribbed  
Economical anti-fatigue mat  
Beveled edges help reduce tripping

**Material:**

Closed-cell PVC sponge  
Thickness: 3/8" and 1/4"



**Colors:** Gray, Black, Black w/Yellow borders\*

**Sizes-Mats:** 2'x3'\*\*, 27"x36'\*\*, 27"x60'\*\*, 3'x10'

**Sizes-Rolls:** 2'x60'\*\*, 3'x60', 4'x60', 6'x60'\*\*

**Custom Cuts:** 2'\*\*, 3', 4', 6' widths

\*Rolls Only 1/4" \$3.08 sf

\*\*Not available w/ Yellow Borders

# SPECIALTY PRODUCTS



## **Non-Slip Rug Underlay:**

Help stop the creeping of mats over carpet with, permanent, self contained, dry adhesive that holds the cushion to the top of the carpet pile. It will not stain, discolor or stick to carpet. Easily cut with household scissors to custom fit any size or shape of rug.

**Size:** 36" & 72", cuts up to 100' in length

## **Edging:**

Edging can be applied to most of our entrance matting by our experienced staff. Custom edging allows mats to be cut to your specifications, and provides a finished, mitered edge for smooth transition borders. Some mats require straight-cut edging. Another option, Safe Edge, provides an alternative to vinyl edging and offers a clean, beveled edge for Protect Super and Quill Tuft products.

**Material:** Extruded Vinyl

**Color:** Black, Brown

**Thickness:** 3/8", 1/4", or 5/8", approximately.

**Size:** Custom sizes

## **Seaming:**

Most of our matting can be seamed to create custom-sized mats. Seaming provides the additional advantage of allowing the matting to be used in non-standard applications.

# METRIC CONVERSIONS

mm	to	inches in decimal	to	inches
0.7 mm	=	0.0273	=	1/64"
0.8 mm	=	0.032	=	1/32"
1.0 mm	=	0.039	=	1/32"
1.5 mm	=	0.059	=	3/64"
1.6 mm	=	0.063	=	1/16"
2.0 mm	=	0.079	=	5/64"
2.5 mm	=	0.098	=	3/32"
3.0 mm	=	0.118	=	7/64"
3.2 mm	=	0.13	=	1/8"
3.5 mm	=	0.138	=	9/64"
4.0 mm	=	0.158	=	5/32"
5.0 mm	=	0.197	=	3/16"
6.0 mm	=	0.236	=	7/32"
6.5 mm	=	0.256	=	1/4"
8.0 mm	=	0.315	=	5/16"
10.0 mm	=	0.394	=	3/8"
12.0 mm	=	0.472	=	15/32"
12.7 mm	=	0.5	=	1/2"
14.5 mm	=	0.567	=	9/16"
15.0 mm	=	0.59	=	19/32"
16.0 mm	=	0.631	=	5/8"
20.0 mm	=	0.787	=	3/4"
22.0 mm	=	0.866	=	7/8"
25.4 mm	=	1.001	=	1.0"

inches	to	mm
1/32"	=	0.8 mm
1/16"	=	1.6 mm
1/8"	=	3.2 mm
5/32"	=	4.0 mm
3/16"	=	5.0 mm
7/32"	=	6.0 mm
1/4"	=	6.5 mm
5/16"	=	8.0 mm
3/8"	=	10.0 mm
15/32"	=	12.0 mm
1/2"	=	12.7 mm
9/16"	=	14.5 mm
5/8"	=	16.0 mm
3/4"	=	20.0 mm
7/8"	=	22.0 mm
1"	=	25.4 mm