

PSY 101- INTRODUCTION TO PSYCHOLOGY

Syllabus Fall 2017

Logistics

This class meets Monday, Wednesday, and Friday from 1-2:20 pm

	17 Sunday	18 Monday	19 Tuesday	20 Wednesday	21 Thursday	22 Friday	23 Saturday
10 ^{am}							
11 ⁰⁰							
12 ^{pm}							
1 ⁰⁰		PSY 101 FR 102		PSY 101 FR 102		PSY 101 FR 102	
2 ⁰⁰							
3 ⁰⁰							
4 ⁰⁰							

We meet in Fraser Hall (FR on the campus map), room 102



Instructor

The instructor is Dr. Todd Haskell. There are three ways you can reach him outside of class time.

Visit AI 486

Monday 3:00-4:00

Wednesday 10:00-11:00

Thursday 2:00-3:00

or by appointment



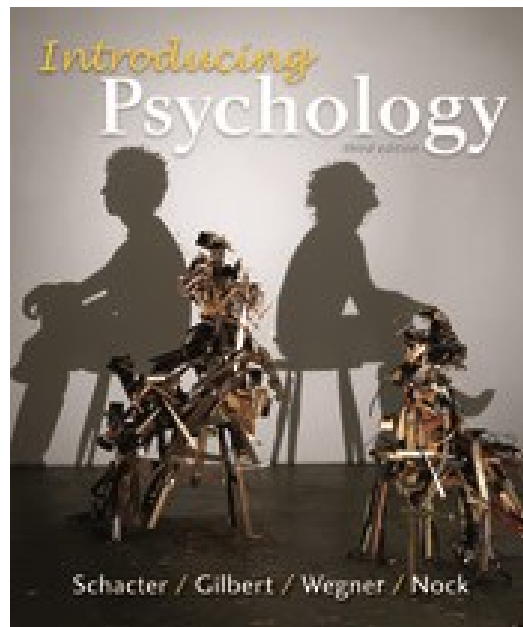
todd.haskell@wwu.edu

360-650-2720 (voice only)



Textbook

The textbook is “Understanding Psychology” (3rd edition). It is by Schacter, Gilbert, Wegner, and Nock. It is published by MacMillan. It looks like this:

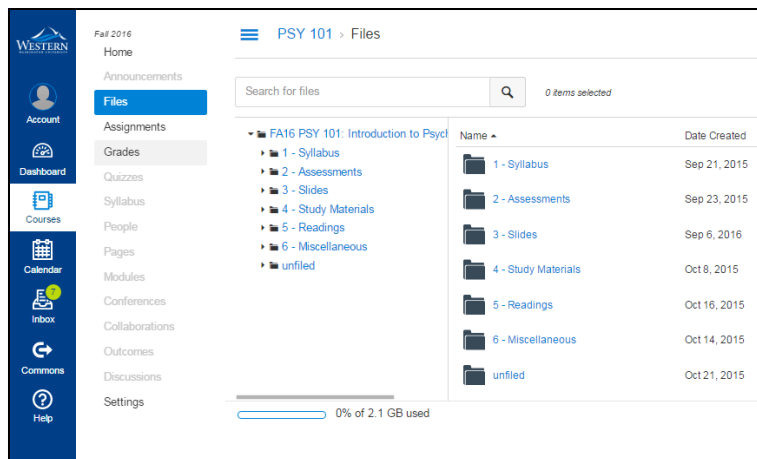


The bookstore has two options: On-line electronic version only (called LaunchPad) or electronic plus looseleaf. But you can buy or rent it from whomever you like, in whatever form you like, as long as you get the 3rd edition.

Canvas

Many aspects of this course are online

- Reading quizzes
- Lecture slides
- Study materials
- Assignment descriptions
- Grades



We will use the Canvas system for this. It is available at <https://www.instructure.com>.

Announcements

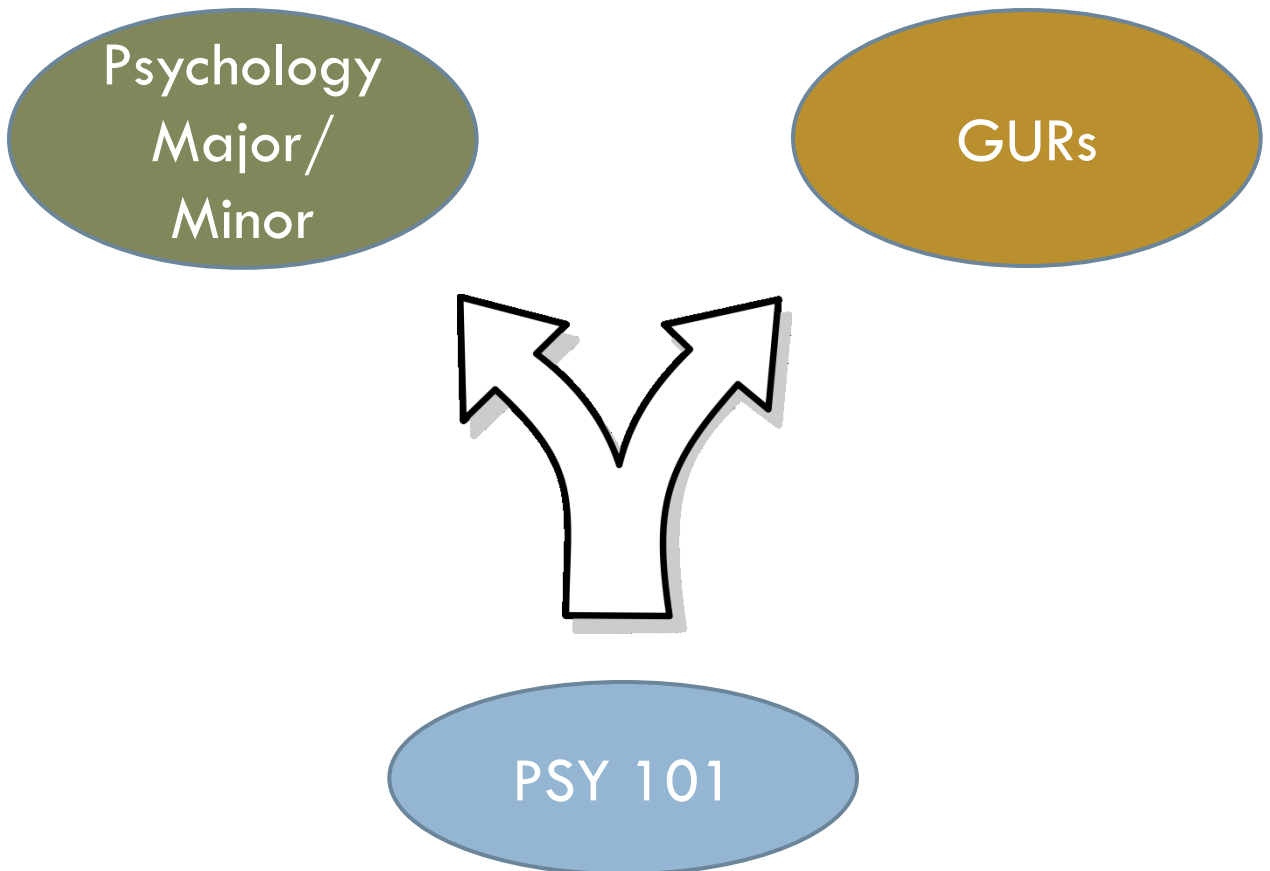
From time to time, I will need to convey important information to the class outside of class time. I use the Announcements feature in Canvas to do this. If I need to reach individual students, I will use the messaging feature in Canvas.



You can change the settings in Canvas to control whether you will be notified of such announcements and messages, and where they will be sent (e-mail, text message, etc.). Make sure you send them someplace where you will see them.

Goals for the course

This class is the first course toward the psychology major or minor, and also counts toward the SSC requirement for the GURs. There are course objectives for each of these roles.



Goals for the course

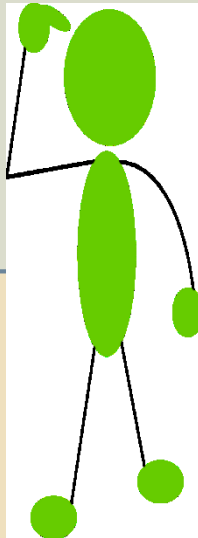
Psychology Major

By the end of this course, you should be able to answer the following questions ...

What is psychology?

How do psychologists answer questions?

How can psychology be applied in the real world?



Strengthen skills that employers value

Improve your ability to be successful in college

Become better at participating in a diverse society

By the end of this course, you should ...

G U R s

Goals for the course

This class connects with 4 of the 8 goals for the psychology major.

This Class

What is psychology?

How do psychologists answer questions?

How can psychology be applied in the real world?

Psych Major Goals

demonstrate knowledge of psychological theory across a broad range of content areas

evaluate data and draw appropriate conclusions

demonstrate critical thinking

recognize applicability of psychological theories and principles in real world settings

design and implement theoretically based and methodologically sound research projects

communicate effectively

recognize that you are a product of and participant in a dynamic sociocultural system that includes similarities and differences with others

view their education in psychology as relevant to their lives post-graduation

Goals for the course

This class also connects with 4 of the 11 goals for the GURs.

This Class

Strengthen skills that employers value

Improve your ability to be successful in college

Become better at participating in a diverse society

GUR Goals

Analyze and communicate ideas effectively in oral, written, and visual forms

Analyze and interpret information from varied sources, including print and visual media

Recognize the rights, responsibilities, and privileges of participating in, and contributing as a citizen in, a diverse society

Understand and evaluate assumptions, values, and beliefs in context of diverse local, national and global communities

Understand and assess the impacts of interactions among the individual, society, and the environment

Explore, imagine and create

Work collaboratively and manage projects to effective completion

Reflect on one's own work and on the ethical dimensions of academic pursuits

Use quantitative and scientific reasoning to frame and solve problems

Explore, imagine and create

Identify and analyze complex problems

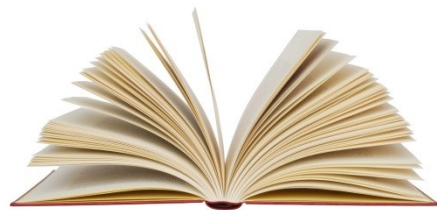
Apply tools of technology, with an understanding of their uses and limitations

Learning activities

There are several ways you will work toward these goals



Attending lecture



Reading the textbook



Involvement in research



Practicing writing



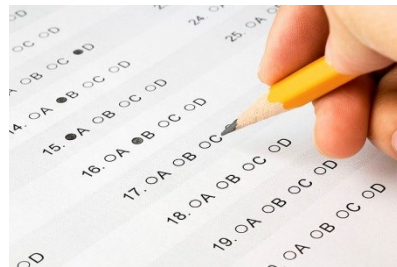
Exploring the media

Assessment

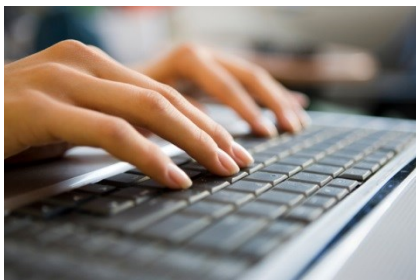
And there are several ways that your progress toward those goals will be assessed



On-line quizzes



In-class exams



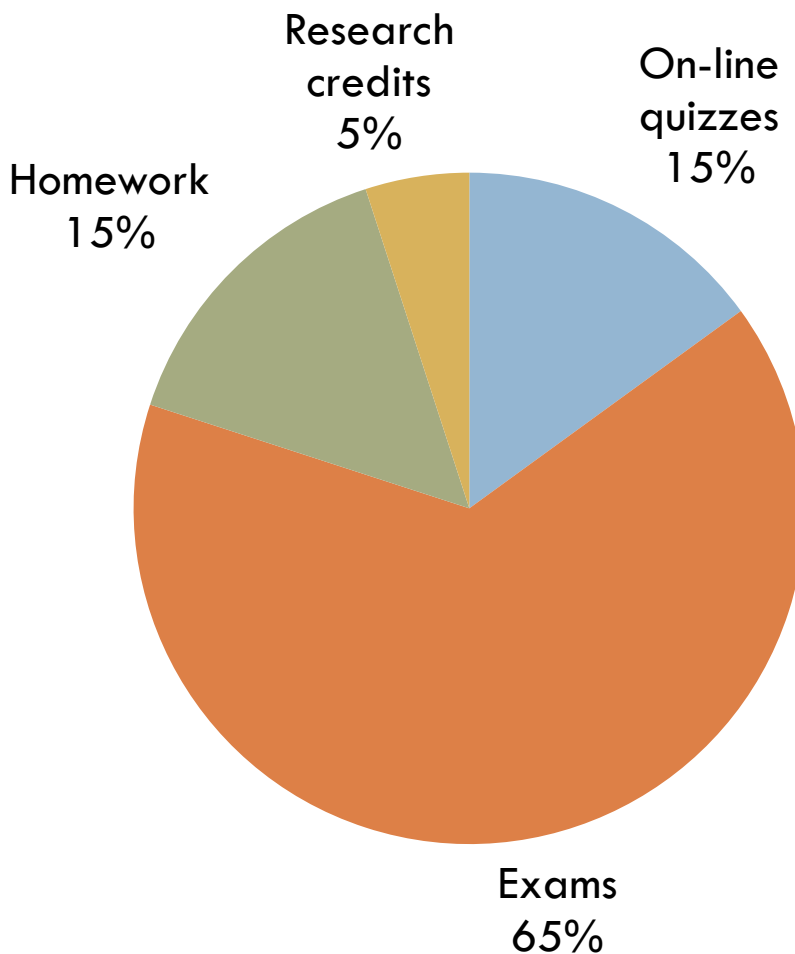
Homework



Research participation credits

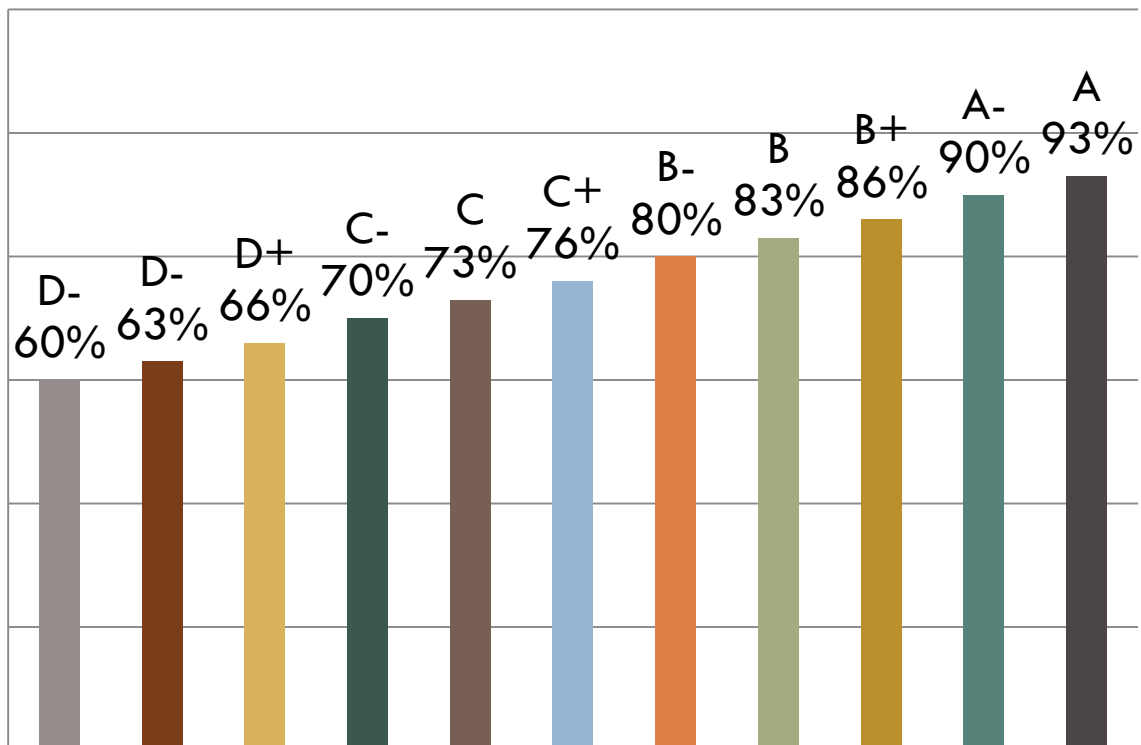
Assessment

Here's how the different types of assessments will be weighted when calculating your course grade



Assessment

Scores on all these assessments will be combined to give you an overall percentage score for the course. Here are the scores you need to exceed in order to earn a given letter grade. For example, to earn a C+, your score needs to exceed 76%.



Other sources of information

This is not a complete description of this course. There are several documents posted on Canvas that supplement this one:

- A class schedule
- A set of course policies
- Detailed descriptions of the quizzes, exams, and assignments



Make sure you read those documents. You are responsible for what is in them.

PSY 101 – Introduction to Psychology Fall 2017

Class Schedule

Notes:

- 1) Topic dates are tentative and are subject to change
- 2) Reading quizzes are due by the beginning of class on the day the corresponding chapter is listed on the schedule
- 3) Due dates for the homework assignments will be provided later

Week	Day	Topic	Textbook Chapter
1	Wed 9/27	Introductory Class	
	Fri 9/29	History of Psychology	Chapter 1 – Psychology: Evolution of a Science
2	Mon 10/2	Research Methods	
	Wed 10/4	Research Methods	Chapter 2 – Methods in Psychology
	Fri 10/6	Research Methods	
3	Mon 10/9	Behavioral Neuroscience	Chapter 3 – Neuroscience and Behavior
	Wed 10/11	Behavioral Neuroscience (cont.)	
	Fri 10/13	Behavioral Neuroscience	Chapter 4 – Sensation and Perception
4	Mon 10/16	EXAM 1	
	Wed 10/18	Cognition	Chapter 6 – Memory
	Fri 10/20	Cognition (cont.)	Chapter 7 – Learning
5	Mon 10/23	Cognition (cont.)	
	Wed 10/25	Cognition (cont.)	Chapter 9 – Language, Thought, and Intelligence
	Fri 10/27	Lifespan Development	Chapter 10 – Development
6	Mon 10/30	Lifespan Development (cont.)	
	Wed 11/1	EXAM 2	
	Fri 11/3	Social Psychology	Chapter 12 – Social Psychology

7	Mon 11/6	Social Psychology (cont.)	
	Wed 11/8	Abnormal Psychology	Chapter 14 – Psychological Disorders
	Fri 11/10	VETERANS DAY – NO CLASS	
8	Mon 11/13	Abnormal Psychology (cont.)	Chapter 15 – Treatment of Psychological Disorders
	Wed 11/15	Abnormal Psychology (cont.)	
	Fri 11/17	EXAM 3	
9	Mon 11/20	Emotion and Motivation	Chapter 8 – Emotion and Motivation
	Wed 11/22	THANKSGIVING BREAK – NO CLASS	
	Fri 11/24	THANKSGIVING BREAK – NO CLASS	
10	Mon 11/27	Emotion and Motivation	
	Wed 11/29	Personality	Chapter 11 - Personality
	Fri 12/1	Psychology in the Media	
11	Mon 12/4	Stress and Health	Chapter 13 – Stress and Health
	Wed 12/6	Careers in Psychology	
	Fri 12/8	Review and Course Evaluations	
12	Tue 12/12	Final Exam 3:30-5:30	

PSY 101 – Introduction to Psychology Course Policies

Use of E-mail to Communicate with the Instructor/TA

- 1) E-mail should not be used to ask for information that can be found in the syllabus, or which has been provided in other documents available on Canvas. Messages asking for such information will be ignored.
- 2) Questions regarding course content should not be asked via e-mail. It is usually very difficult to explain concepts in an e-mail, and attempts to do so often lead to confusion and misunderstanding. Instead, you are encouraged to ask a classmate, or come to office hours.
- 3) E-mail is the preferred way to notify the instructor if you will be unable to take an exam or submit an assignment on time, or for other communications where it is important to have a record of what was said and when.
- 4) You should allow one business day for the instructor to respond to an e-mail before re-sending the message. In particular, you should not expect responses on weekends or outside of business hours.

Use of Electronic Devices in Class

Electronic devices may only be used in class for class-related purposes (like taking notes). Texting your friends during class, checking your Facebook page, or making on-line purchases are not acceptable.

Illness

If you have a cold, the flu, or any other contagious illness, you should not attend class. You will not be penalized for missing class due to illness, however, you are responsible for checking with a classmate regarding what you missed, and going over the material we covered on your own time. If you still have questions after doing that, you should come to office hours or make an appointment with me. If missing class would cause you to miss an exam, you are still responsible for notifying the instructor in advance (see next section).

Policy on Missed Exams

- 1) You will be permitted to make up one exam during the quarter if either of the following applies:
 - a) You know you will be unable to take the exam at the regularly scheduled time, and you contact the instructor prior to the time of the exam to make alternative arrangements. The instructor reserves the right to decide what are acceptable reasons for missing the exam, and may ask for documentation of your reason.
 - b) You are unable to take the exam at the regular time due to an unforeseeable emergency, and you are able to document this emergency and explain why you couldn't contact the instructor in advance.
- 2) Make-up exams must be taken as soon as you are able to resume attending classes.

Policy on Late Assignments

- 1) Unless otherwise specified, all assignments are due by the beginning of class on the date indicated on the syllabus.
- 2) Assignments submitted late will receive a late penalty of 50%. Late assignments will not be accepted more than 3 days after the due date.
- 3) A late assignment is considered excused if either of the following applies:

- a) You know you will be unable to submit an assignment on time and notify the instructor in advance
- b) You are unable to submit an assignment on time due to an unforeseeable emergency, and you are able to document this emergency and explain why you couldn't contact the instructor in advance

For an excused late assignment, you will typically receive an extension. Provided you are able to submit the work by the end of that extension, no late penalty will be applied. However, the instructor reserves the right to determine the appropriate duration of the extension, based on the nature of the assignment and the circumstances. Extensions can be as short as an hour and as long as several days. If an in-class activity depends on having an assignment completed by class time, the instructor may decide not to grant an extension.

Academic Integrity

Academic integrity is about what kind of people we are – our character and our respect for both others and ourselves. And in this class, it is also about respect for the process of science. Cheating on an exam is like making up data, and plagiarism is like claiming someone else's discovery as your own.

Because science relies on a free exchange of ideas, students are encouraged to discuss material and assignments with anyone they wish. However, unless otherwise indicated, the actual assignments and exams must be the student's own work. Furthermore, student work should clearly distinguish between the student's own words and ideas, and words and ideas taken from someone else, using quotation marks and citations as appropriate. When in doubt, consult the instructor. More information about academic integrity can be found at <http://www.wvu.edu/integrity/>.

Students with Disabilities

Students requesting academic accommodations in this class based on a disability should make a request through disAbility Resources for Students (DRS) no later than the first week of classes. DRS can be contacted via e-mail at drs@wvu.edu or by phone at (360) 650-3083 and is on the web at <http://www.wvu.edu/drs/>.

Dealing with Serious Illnesses, Emergencies, and other Crises

From time to time students experience a serious illness, emergency, or other crisis during the quarter. Western provides several resources to support students during difficult times, and you are encouraged to seek out support and assistance as early as possible.

- In the case of a medical concern or question, please contact the Health Center: 650-3400 or http://www.wvu.edu/chw/student_health
- In the case of an emotional or psychological concern or question, please contact the Counseling Center: 650-3164 or <http://www.wvu.edu/counseling/>
- In the case of a non-emergency health and safety concern, please contact the University Police: 650-3555 or <http://www.wvu.edu/ps/police/>
- In the case of a family or personal crisis or emergency, please contact the Office of Student Life: 650-3706 or http://www.wvu.edu/dos/office/slo_student_assistance.shtml
- To seek confidential support related to sexual violence, please contact CASAS (650-3700 or http://www.wvu.edu/pws/about_casas.shtml), the Student Health Center, and/or the Counseling Center. To report sexual violence, please contact University Police, Bellingham Police, and/or the Title IX Coordinator in Western's Equal Opportunity Office (650-3307 or <http://www.wvu.edu/eoo/>). Faculty are responsible employees who are required to report sex discrimination, including sexual violence that they learn about, to the Title IX Coordinator.