



Department of Psychology

UNIVERSITY OF CENTRAL FLORIDA



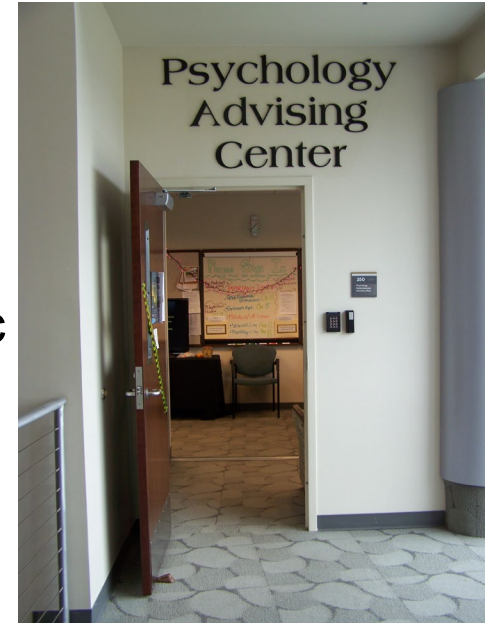
UCF

Transfer Orientation

- 12pm eat lunch & visit tables
 - Student ID
 - Health Holds?
- 2pm Register in PSY 107!



- What is Psychology Advising and how is this different from my other advisors at UCF?
 - Psychology major, minor, or Behavioral Forensic Certificate
 - 3 ways to meet with an advisor or peer advisor:
 - 1) Walk in to PSY 250:
M-Th 9am-4pm, F 9am-12pm
 - 2) Zoom appointment scheduled on myKnightStar
 - 3) Email Psychadvising@ucf.edu



<http://sciences.ucf.edu/psychology/undergraduate-advising/>

Ms. Karen Cox, MA
Director



Ms. Erin Grainger, MA
Assistant Director



Ms. Janette Daeschler
Administrative Assistant



College of Sciences Academic Services(**COSAS**)

- General Education (GEP) questions
- Process overrides
- Graduation Questions
- Other matters concerning college and university requirements, policies, and procedures

- Check out their webpage for how to connect with them:
<https://sciences.ucf.edu/cosas/>
- Email: COSAS@ucf.edu



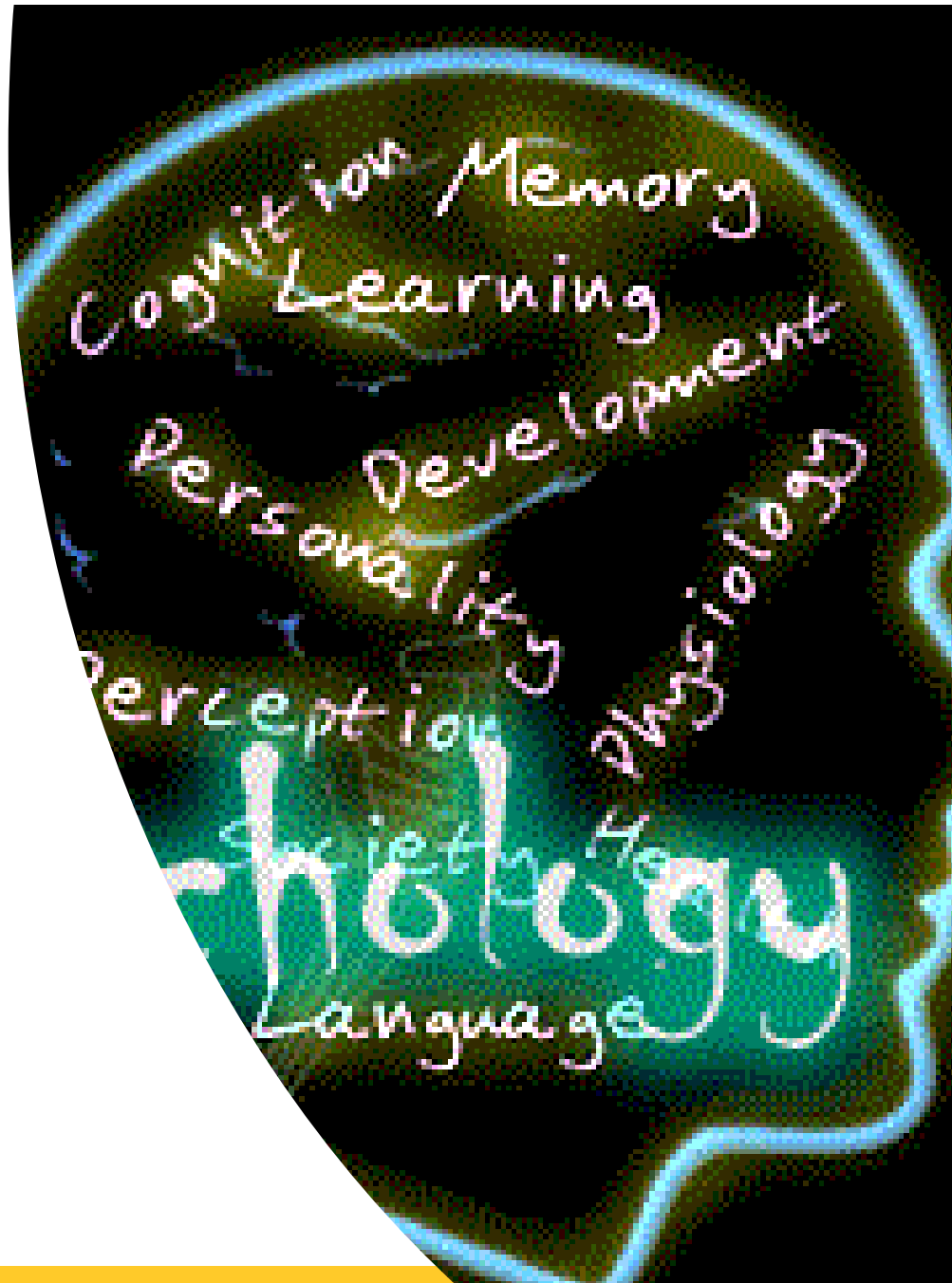
Some more resources:

- **Psychology Faculty**
sciences.ucf.edu/psychology/
- **Counseling & Psychological Services (CAPS)**
 - Individual, group, workshops
 - LMHC, LCSW, Psychology & Psychiatry
- **Student Academic Resource Center (SARC)**
 - Tutoring, workshops, SI
- **Office of Pre-Health Pre-Law Advising**
 - MD, DO, PA, DMD, OT, PT & more!
- **Veteran's Academic Resource Center (VARC)**
- **Student Accessibility Services**
- **Student Financial Assistance**
- **Transient: take a class with another school:**
[Floridashines.org](https://floridashines.org)

What is psychology?

- Scientific study of the human mind and its functions, especially those affecting behavior in a given context.

Ψ



Careers in Psychology

40% alumni pursue psych, the other 60% do careers outside of psychology!

recreation Rehabilitation
organizer Customer management
Warehouse youth
outreach Advertising manager Personnel
Community Juvenile
fundraising Case Activity agent Law Historical
Work compiler care staff Statistical College Film Office Marketing
campaign Alcohol/drug Technical Lobbying Group parent minister
researcher relations Life Intelligence services
Career advisor Audiences claims/underwriter Park Financial
Store specialist Parole Hospital Foster Gerontology Claims Housing/student
instructor Child patient Volunteer Occupational Loan analyst
Program Mental research owner writer service
Human Home planning Public Employee Residential
aide Social coordinator worker
Insurance Laboratory clerk Newspaper force Media

WordItOut

[https://sciences.ucf.edu/psychology/
undergraduate-advising/](https://sciences.ucf.edu/psychology/undergraduate-advising/)



UCF

Get involved!

• Student Organizations:

- Psychological Society,
- Psi Chi Honor Society,
- Multicultural Psychological Student Association (MPSA),
- Student Professionals for I/O Psych (SPIOP)
- Active Minds
- Neuroscience Alliance
- & More



Gain Relevant Experience:

- **Research Assistant** (need at least 1 year to apply for I/O or doctoral programs),
- Teaching Assistant,
- Internship,
- Volunteer,
- Part-time/Full-time work



<-Find jobs
and
internships
with
handshake!!

To earn a Bachelors Degree in Psychology....

- Need to complete a total of **120** credit hours
- **42** of those hours need to be upper level (3000 and higher)
- 30 of last 39 with UCF only
- 21 hours from UCF Psychology
- You must earn at **least a 2.0/“C” or higher** to count for the psychology major requirements



1. UCF General Education Program (GEP)

Complete as
soon as
possible!!

- Complete if transferring with AA from public college in Florida
- If not, **COSAS** can advise you on the 36 credit hour requirement
- **UCF Academic Services** will evaluate credits transferring to possibly count towards those requirements
www.academicservices.ucf.edu/transfer-credit/

2. College Level Foreign Language Graduation Requirement

Complete as
soon as
possible!!

- You must show **proficiency** in a foreign language at the **college level** by:
 - Passing elementary level 2 of a language or higher
OR
 - Passing second level of a test with CLEP or FLATS test @ the [University Testing Center](#)
- Languages UCF offers:
 - Modern Language Dept: Spanish, French, German, Italian, Portuguese, Russian, Japanese, Korean, Chinese, Arabic....
 - Other languages: Hebrew and American Sign Language

3. Common Program Prerequisites/ 3. Core Reqs. Basic Level

Complete as soon as possible!!

- **PSY 2012 General Psychology**
- **Biology:**
 - BSC 2010C Biology I
 - or BSC 1005 Principles of Biology
- **Statistics:**
 - STA 2014C Principles of Statistics
 - or STA 2023 Statistical Methods I
 - PR: College Algebra or Finite Math

4. Psychology B.S. Core Requirements: Advanced Level

PSY 3024	Psychology: Career Readiness I	2 hrs
PSY 3074	Psychology: Career Readiness II	2 hrs
PSY 3204C	Statistical Methods in Psychology	4 hrs
PSY 3213C	Research Methods in Psychology	4 hrs
PSB 3002	Physiological Psychology	3 hrs
PSY 4604	History and Systems of Psychology	3 hrs
SOP 3004	Social Psychology	3 hrs
DEP 2004	Developmental Psychology	3 hrs
EXP 3604	Cognitive Psychology	3 hrs
PSY 4049	Psychology Capstone	2 hrs

PSY 3024 in first semester
PSY 3074 in second semester
S/U graded doesn't affect GPA
2 credits, online only

Take Statistics in order:
First-STA 2023/2014C
Second- PSY 3204C
Third- PSY 3213C

PSY 4049 in LAST semester
S/U graded doesn't affect
GPA
2 credits, online only

5. Diversity Electives (choose 1)

SOP 3742	Psychology of Women	3 hrs
SOP 3723	Cross Cultural Psychology	3 hrs
SOP 3724	Psychology of Prejudice	3 hrs
SOP 3784	Psychology of Diversity	3 hrs



6. Psychology Tracks: Choose a Track



- Choose a track to focus your learning
- Each track requires 5 courses
- No matter which track, everyone is earning the same degree/major:
 - Bachelor of Science in Psychology

Clinical Track (5 courses needed)

Required:

CLP 3143 Psychopathology

Select 4 of the following courses:

APK 3400 Sports Psychology

CLP 3004 Behavioral Self Control

CLP 3184 Women's Mental Health

CLP 3302 Clinical Psychology

CLP 3413 Contemporary Behavior Therapy

CLP 4314 Health Psychology

CLP 4134 Childhood Psychopathology

CLP 4390 Forensic Psychology

DEP 3202 Psychology of Exceptional Children

DEP 3464 Psychology of Aging

EAB 3703 Principles of Behavior Modification

EAB 3706 Behavior Modification Part 2

PCO 4203 Interviewing and Counseling

PPE 3003 Personality Theory and Research

PSB 3441 Psychobiological Aspects of Drugs

PSY 3302 Psychological Measurement

PSY 4215C Advanced Research Methods in Psychology

SOP 2772 Sexual Behavior

SOP 3751 Legal Aspects of Psychology



Study, diagnose, and
treat mental,
emotional, &
behavioral disorders



Industrial/Organizational Psychology (5 courses needed)

Required:

INP 3004 Industrial Organizational Psychology

Select 4 of the following courses:

CLP 4314 Health Psychology

EXP 3404 Basic Learning Processes

EXP 3304 Motivation

INP 3951 Industrial/Organizational Fieldwork

INP 4313 Organizational Psychology

INP 4380 Psychology of Teamwork

PPE 3003 Personality Theory and Research

PSY 3302 Psychological Measurement

PSY 4215C Advanced Research Methods in Psychology



Understand productivity, management, & employee working styles to improve the quality of life in the workplace



Human Factors Psychology (5 courses needed)

Required:

EXP 3250 Principles of Human Factors Psychology

Select 4 of the following courses:

EXP 3204 Sensation and Perception

EXP 4507 Advanced Human Memory and Cognition

PSB 4240 Neuropsychology

PSY 3630 Psychology of Human-Animal Interaction

PSY 4215C Advanced Research methods in Psychology

Apply human behavior to design and use of products, systems, tools, & environments for comfortable human use



Neuroscience (5 courses needed)

Required:

PSB 4240 Neuropsychology (PR: PSB 3002 Physio Psych)

Select 4 of the following courses:

EXP 3204 Sensation and Perception

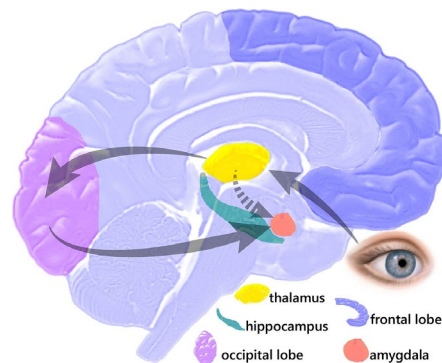
EXP 3304 Motivation

PSB 3441 Psychobiological Aspects of Drugs

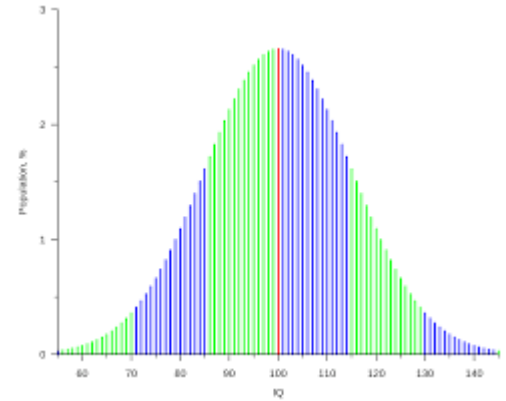
PSB 3842 Sleep and Dreams

PSY 4215C Advanced Research Methods in Psychology

Understand how
brain affects
cognitive function
and behavior



Track 5: Experimental (5 courses needed)



Select 5 of the following courses

EXP 3304 Motivation

EXP 3640 Psychology of Language

EXP 3404 Basic Learning Processes

EXP 4507 Advanced Human Memory and Cognition

EXP 3204 Sensation and Perception

PSY 3302 Psychological Measurement

PSY 3320 Survey Methods in Psychology

PSY 3635 Science and Pseudoscience in Psychology

PSY 4215C Advanced Research Methods in Psychology

Focus on design,
analysis, and
dissemination of
research through
experimentation
related to behavior



General (5 courses needed)



Select **any** five (5) courses from those taught by the **Psychology** department

NOTE: The following courses will NOT fulfill this requirement.

~~INP 3141C Advanced Applied Psychology~~

~~INP 3951 Industrial/Organizational Field Work~~

~~PSY 3905 Directed Independent Study~~

~~PSY 4906 Directed Independent Study~~

~~PSY 4912 Directed Independent Research~~



7. Math/Science Electives (2 courses needed if you did not take them at your previous college)

ANT 2511 The Human Species	CHM 2045C Chemistry Fundamentals I	PCB 3703C Human Physiology
ANT 3541 Bio behavioral Anthropology	CHM 2046 Chemistry Fundamentals II	PHY 2053C College Physics I
ANT3550C Primatology	EVR XXXX Any EVR prefix	PSC 1121 Physical Science
ANT 4516 Human Biological Diversity	HSA 4702 Health Sciences Research Methods	STA 4102 Computer Processing of Statistical Data
ANT 4586C Human Origins	HSC 3147 Introduction to Pharmacology	STA 4163 Statistical Methods II
BSC 2011C Biology II	MAC 2233 Concepts of Calculus	STA 4164 Statistical Methods III
BSC4312C Advanced Marine Biology	MCB XXXX Any MCB prefix course	ZOO XXXX Any Zoo Prefix course
CHM 1020 Concepts in Chemistry	PCB 3063 Genetics	

Recommended schedule:

SU22 (full time is 6 credits for financial aid)

- **GEP Statistics STA 2023**
- **DEP 2004 Developmental**
 - If either STA or DEP is completed then you could take SOP 3004, PSB 3002, EXP 3604, track elective, diversity elective, science elective, or course from minor/certificate

Alternative courses:

GEP requirements, Diversity elective, SOP 3004 Social Psych, Track Electives, PSB 3002 Physiological Psych, EXP 3604 Cognitive Psych, math/science elective, minor/certificate courses?

FA22 (full time is 12 credits for financial aid)

- **Language 1**- unless completed or plan to test out
- **PSY3024 Psych: Career Readiness I**
- **GEP Statistics STA 2023** or if completed: **PSY 3204C Stat. Methods in Psych**
- **Biology, PSB 3002, SOP 3004, EXP 3604, track, diversity, or science elective, or minor/certificate, etc**

Language courses:

Level 1: 1120 or ASL 2140

Level 2: 1121 or ASL 2150

Prefixes: SPN, FRE, GER, ITA, POR, KOR, JPN, HBR, CHI, ARA



Psychology Advising Center

UNIVERSITY OF CENTRAL FLORIDA

Have questions?
Email

PsychAdvising@ucf.edu