



**PTFE Based Lead Free
Metal-Polymer Plain Bearing Materials
for Dry Applications**

Technical Information



**GLACIER GARLOCK
BEARINGS**

1 Introduction

This brochure describes the range of self-lubricated, PTFE based metal-polymer plain bearings specifically developed by Glacier Garlock Bearings (GGB) for operation in dry applications.

PTFE based metal-polymer plain bearing materials are used extensively in a wide range of industrial and automotive applications, where they provide improved friction and wear performance relative to conventional bimetal bearing alloys. The materials offer excellent performance under a diverse range of loads and speeds, with or without lubrication. Where no external lubricant is available and the bearing operates dry, the material must provide a sufficiently low wear rate to meet the life requirement of the application.

GGB's longest serving product, DU™, was originally developed as a self-lubricated dry bearing and for almost 50 years has remained the

industry standard. Although the PTFE lining of DU contains lead, it has in recent years been GGB's environmental policy to eliminate the use of lead from its products. As a result of an extensive development program, GGB is now able to offer a range of alternative lead-free, PTFE based metal-polymer dry bearings that are ELV compliant and capable of meeting the most stringent performance requirements.

Each of these new materials comply with the European Parliament's End of Life Vehicles directive (ref: 2000/53/EC) on the elimination of hazardous materials in the construction of passenger cars and light trucks.

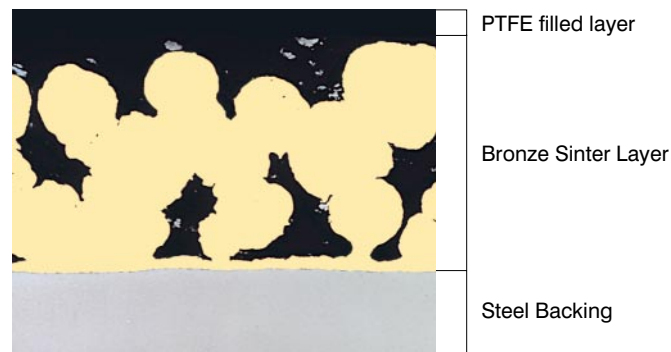
Although these materials are designed for operation in the absence of a lubricant, it should be noted that they also perform exceptionally well in lubricated applications.

2 Materials

Structure and Composition

GGB PTFE based metal-polymer materials share a common structure of a steel backing to which is bonded

a porous bronze interlayer impregnated and overlaid with a filled PTFE bearing layer.



Microsection

PTFE Lining Compositions

Material	DP4™	DH™	DP20™
Lining Composition	PTFE + CaF ₂ + aramid fibre	PTFE + glass fibre + aramid fibre	PTFE + thermo-plastic polymer

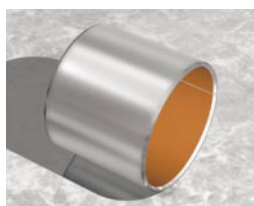
Physical and Mechanical Properties

Physical Properties	Units	DP4	Values DH	DP20
Coefficient of thermal expansion - parallel to surface - normal to surface	1/10 ⁶ K	11	11	11
		30	30	30
Maximum operating temperature T _{max}	°C	280	280	200
Minimum operating temperature T _{min}	°C	-200	-200	-200
Mechanical Properties				
Compressive yield strength	N/mm ²	350	350	350
Max. load - static - dynamic	N/mm ²	250	250	250
		140	140	140

3 Forms

Basic Forms

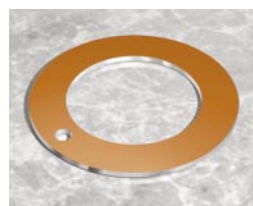
All materials are available in a variety of forms such as cylindrical and flanged wrapped bushes, thrust washers, strip material, and as special parts manufactured to customers' requirements.



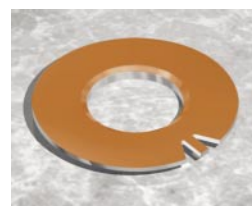
DP4 Cylindrical bushes



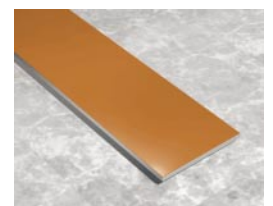
Flanged bushes



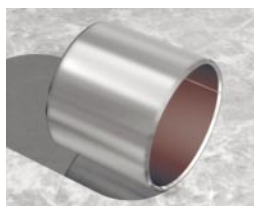
Thrust washers



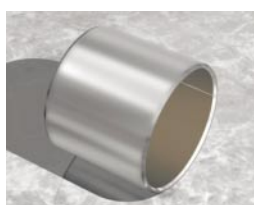
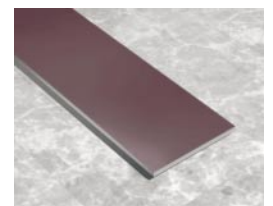
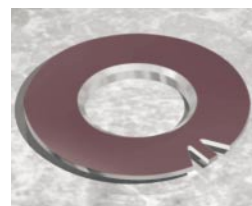
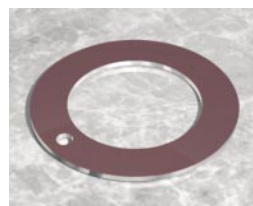
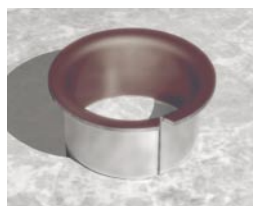
Flanged washers



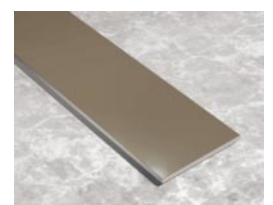
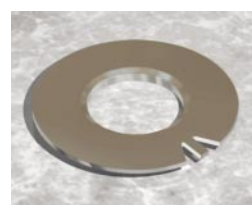
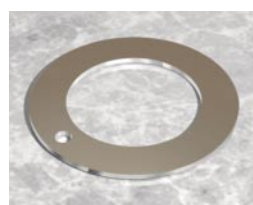
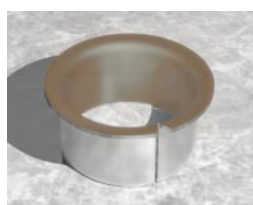
Strips



DH



DP20



Patent Information

DH: US Patent No. 6,296,392
European Patent No. 956458 and others apply

DP4: US Patent No. 5,911,514
European Patent No. 708892 and others apply

DP20: US Patent No. 5,665,825
European Patent No. 683807 and others apply, including Brazil, China

Trademark Information

Glacier™, GLACIER™, DU™, DP4™, DH™ and DP20™ are trademarks of Glacier Garlock Bearings.

Performance Factors

Each application, depending on the equipment design, usage, lubrication and operating conditions, places individual demands on the bearing material properties required for satisfactory performance. The

following indicates some of the factors that can influence bearing life and compares the major performance characteristics of each of the materials.

Dry Wear Resistance

The tribo-chemistry of the dry wear mechanism of the lead containing DU material is fundamental to its wide operating spectrum and resulting commercial acceptance. The dry wear mechanism of the lead free PTFE based metal-polymer bearing materials however, is significantly different and as a result the relative performance of the materials depends upon the actual operating conditions.

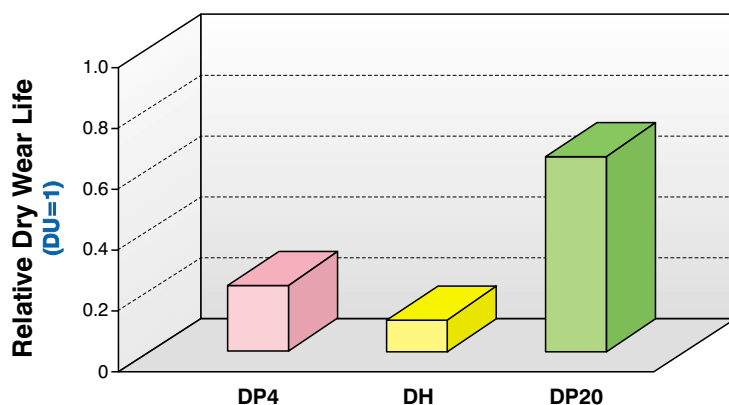
The wear rate under dry conditions depends on the specific load (\bar{p}), sliding speed (U), the $\bar{p}U$ factor and the type of motion i.e. continuous or intermittent, rotating or oscillating.

The relative performance of each material under a range of standard GGB test rig conditions is highlighted below.

Continuous Rotation

Under the test conditions quoted DP20 shows the best dry wear performance of all the lead-free

PTFE base metal-polymer materials tested.



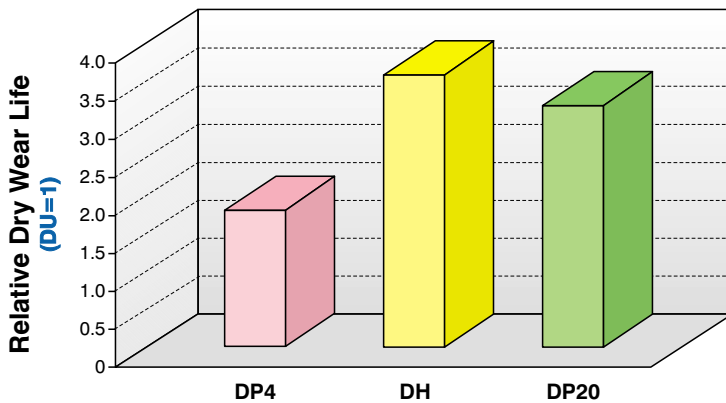
Test Conditions:

Load: 0.9 MPa Speed: 0.78 m/s PV: 0.7 MPa x m/s Shaft Roughness: 0.15 $\mu\text{m Ra}$

Oscillating Movement

The lead free materials generally exhibit superior performance under oscillating conditions, particularly in conditions of high amplitude, low frequency oscillation, as indicated. However, it should be noted that

bearing performance under high frequency, low amplitude modes of operation, such as those associated with vibration or fretting type wear, is highly influenced by the specific conditions of operation.



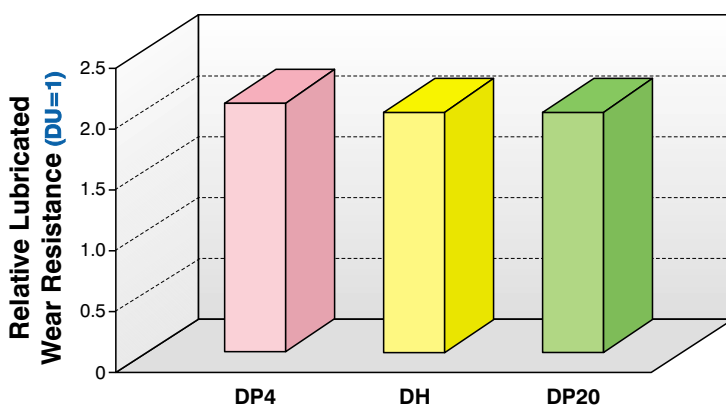
Test Conditions:

Load: 13 MPa Frequency: 0.4 Hz Angle of Oscillation: 36° Shaft Roughness: 0.15 $\mu\text{m Ra}$

Boundary Lubricated Wear Resistance

For a long service life, a low wear rate is necessary particularly under severe mixed film or boundary lubricated conditions where the genera-

ted lubricant films are of the same order, or less than, the surface roughness of the mating surface.



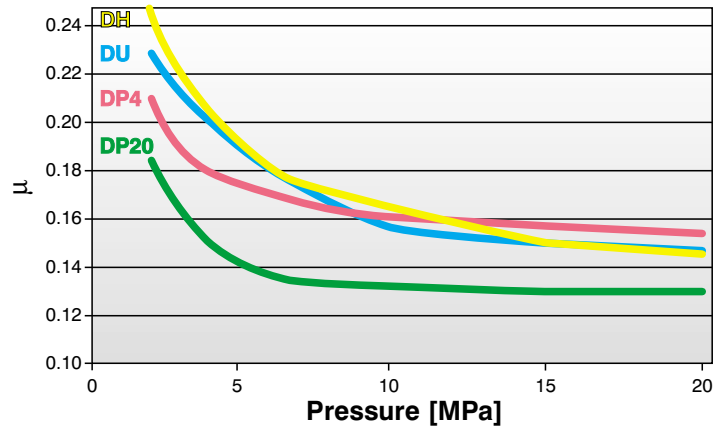
Test Conditions:

Speed: 0.11 m/s Load: 12 - 40 MPa Lubricant: BP Bartran HV

Dry Friction

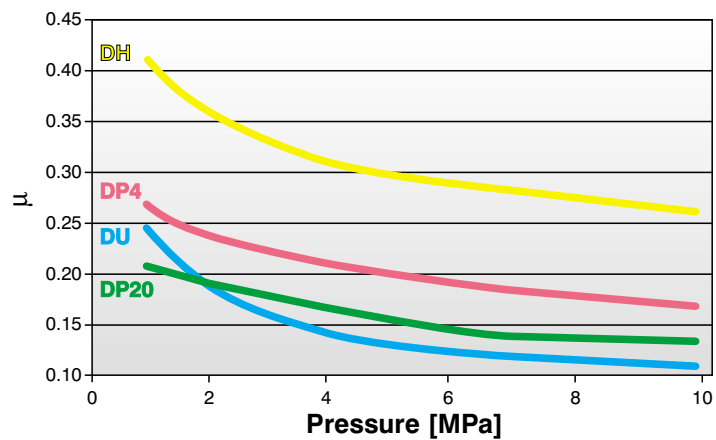
A low and constant static and dynamic friction is generally desirable in most applications. None of the materials show stick-slip effects, how-

ever, actual friction values depend on many design and operating factors.



Dry friction under low speed conditions:

Speed: 0.04 m/s



Dry friction under high speed conditions:

Speed: 0.7 m/s

Calibrating / Burnishing

In some applications it is necessary to calibrate or burnish the assembled bush bore in order to control the assembled bearing clearance. The physical properties of the PTFE bearing surface determine the ability of the bearing material to withstand this process.

All of GGB's metal polymer bearings are capable of being calibrated within reasonable limits of tool interference.

Overview & Selection Guide

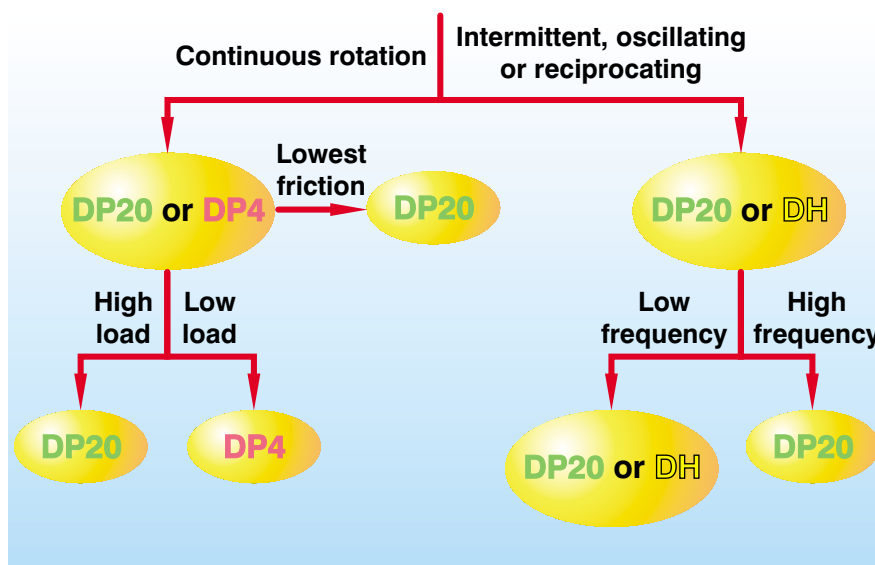
Product selection may be simplified using the following table and flow-chart which summarises and compares the relative strengths of each of the lead free self-lubricating materials.

Performance Comparison

Material	High speed, continuous rotation	Low frequency oscillation	High frequency oscillation	Dry friction	Burnishability
DP20	1	1	1	1	2
DH	4	1	3	2	2
DP4	2	3	3	2	2

Ranking: 1 excellent 2 good 3 satisfactory 4 not recommended

Material Selection Guide for Dry Applications



Product Information

GLACIER GARLOCK BEARINGS gives an assurance that the products described in this document have no manufacturing errors or material deficiencies. The details set out in this document are registered to assist in assessing the material's suitability for the intended use. They have been developed from our own investigations as well as from generally accessible publications. They do not represent any assurance for the properties themselves.

Unless expressly declared in writing, GLACIER GARLOCK BEARINGS gives no warranty that the products described are suited to any particular purpose or specific operating circumstances. GLACIER GARLOCK BEARINGS accepts no liability for any losses, damages or costs how-

ever they may arise through direct or indirect use of these products.

GLACIER GARLOCK BEARINGS's sales and delivery terms and conditions, included as an integral part of quotations, stock and price lists, apply absolutely to all business conducted by GLACIER GARLOCK BEARINGS. Copies can be made available on request.

Products are subject to continual development. GLACIER GARLOCK BEARINGS retains the right to make specification amendments or improvements to the technical data without prior announcement.

Edition 2003; English (This edition replaces earlier editions which hereby lose their validity).

