

CATALOG 401



PULLEYS & BELTS

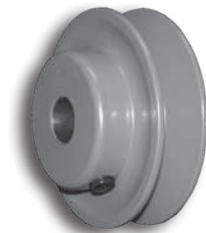
WWW.PEMSMOTORS.COM

SINGLE GROOVE FIXED BORE "A" SECTION | cast iron

OUTSIDE DIAMETER	BORE SIZE	POWER DRIVE NUMBER	MASKA NUMBER
1.55"	1/2"	---	MA15-1/2
1.55"	5/8"	---	MA15-5/8
1.75"	1/2"	AK17-1/2	MA18-1/2
1.75"	5/8"	AK17-5/8	MA18-5/8
2.0"	1/2"	AK20-1/2	MA20-1/2
2.0"	5/8"	AK20-5/8	MA20-5/8
2.0"	7/8"	---	MA20-7/8
2.2"	1/2"	AK22-1/2	MA22-1/2
2.2"	5/8"	AK22-5/8	MA22-5/8
2.2"	7/8"	---	MA22-7/8
2.3"	1/2"	AK23-1/2	MA23-1/2
2.3"	5/8"	AK23-5/8	MA23-5/8
2.3"	7/8"	---	MA23-7/8
2.5"	1/2"	AK25-1/2	MA25-1/2
2.5"	5/8"	AK25-5/8	MA25-5/8
2.5"	7/8"	---	MA25-7/8
2.7"	1/2"	AK27-1/2	MA27-1/2
2.7"	5/8"	AK27-5/8	MA27-5/8
2.7"	7/8"	---	MA27-7/8
2.8"	1/2"	AK28-1/2	MA28-1/2
2.8"	5/8"	AK28-5/8	MA28-5/8
2.8"	7/8"	---	MA28-7/8
3.05"	1/2"	AK30-1/2	MA30-1/2
3.05"	5/8"	AK30-5/8	MA30-5/8
3.05"	7/8"	AK30-7/8	MA30-7/8
3.25"	1/2"	AK32-1/2	MA33-1/2
3.25"	5/8"	AK32-5/8	MA33-5/8
3.25"	7/8"	AK32-7/8	MA33-7/8
3.45"	1/2"	AK34-1/2	MA35-1/2
3.45"	5/8"	AK34-5/8	MA35-5/8
3.45"	7/8"	AK34-7/8	MA35-7/8
3.75"	1/2"	AK39-1/2	MA38-1/2
3.75"	5/8"	AK39-5/8	MA38-5/8
3.75"	7/8"	AK39-7/8	MA38-7/8
3.95"	1/2"	AK41-1/2	MA40-1/2
3.95"	5/8"	AK41-5/8	MA40-5/8
3.95"	7/8"	AK41-7/8	MA40-7/8
4.25"	1/2"	AK44-1/2	MA43-1/2
4.25"	5/8"	AK44-5/8	MA43-5/8
4.25"	7/8"	AK44-7/8	MA43-7/8
4.45"	1/2"	AK46-1/2	MA45-1/2
4.45"	5/8"	AK46-5/8	MA45-5/8
4.45"	7/8"	AK46-7/8	MA45-7/8
4.75"	1/2"	AK49-1/2	MA48-1/2
4.75"	5/8"	AK49-5/8	MA48-5/8
4.75"	7/8"	AK49-7/8	MA48-7/8
4.95"	1/2"	AK51-1/2	MA50-1/2
4.95"	5/8"	AK51-5/8	MA50-5/8
4.95"	7/8"	AK51-7/8	MA50-7/8
5.25"	1/2"	AK54-1/2	MA53-1/2
5.25"	5/8"	AK54-5/8	MA53-5/8
5.25"	7/8"	AK54-7/8	MA53-7/8

Use with 3L & A(4L) V-Belts
 Additional Sizes Available Upon Request

AK25-1/2



SINGLE GROOVE FIXED BORE "A" SECTION | cast iron

OUTSIDE DIAMETER	BORE SIZE	POWER DRIVE NUMBER	MASKA NUMBER
5.45"	1/2"	AK56-1/2	MA55-1/2
5.45"	5/8"	AK56-5/8	MA55-5/8
5.45"	7/8"	AK56-7/8	MA55-7/8
5.75"	1/2"	AK59-1/2	MA58-1/2
5.75"	5/8"	AK59-5/8	MA58-5/8
5.75"	7/8"	AK59-7/8	MA58-7/8
5.95"	1/2"	AK61-1/2	MA60-1/2
5.95"	5/8"	AK61-5/8	MA60-5/8
5.95"	7/8"	AK61-7/8	MA60-7/8
6.45"	1/2"	---	MA65-1/2
6.45"	5/8"	AK66-5/8	MA65-5/8
6.45"	7/8"	---	MA65-7/8
6.95"	1/2"	---	MA70-1/2
6.95"	5/8"	AK71-5/8	MA70-5/8
6.95"	7/8"	---	MA70-7/8
7.25"	1/2"	AK74-1/2	MA73-1/2
7.25"	5/8"	AK74-5/8	MA73-5/8
7.25"	7/8"	---	MA73-7/8
8.0"	1/2"	---	MA80-1/2
8.0"	5/8"	---	MA80-5/8
8.0"	7/8"	---	MA80-7/8

Use with 3L & A(4L) V-Belts
 Additional Sizes Available Upon Request

PEMS is pleased to announce Power Drive as our newest line of pulleys. The Power Drive line of pulleys offer a distinct edge over the competition by combining superior quality with unbeatable pricing. Power Drive is the current preferred supplier of pulleys to many OEM's such as Carrier, Lennox, Aeon Coil, and Twin City Fans to name a few.



SINGLE GROOVE FIXED BORE "B" SECTION | cast iron

OUTSIDE DIAMETER	BORE SIZE	POWER DRIVE NUMBER	MASKA NUMBER
2.0"	1/2"	---	MB20-1/2
2.0"	5/8"	---	MB20-5/8
2.25"	1/2"	---	MB23-1/2
2.25"	5/8"	---	MB23-5/8
2.25"	7/8"	---	MB23-7/8
2.4"	1/2"	BK24-1/2	MB24-1/2
2.4"	5/8"	BK24-5/8	MB24-5/8
2.4"	7/8"	BK24-7/8	MB24-7/8
2.5"	1/2"	BK25-1/2	MB25-1/2
2.5"	5/8"	BK25-5/8	MB25-5/8
2.5"	7/8"	BK25-7/8	MB25-7/8
2.6"	1/2"	BK26-1/2	MB26-1/2
2.6"	5/8"	BK26-5/8	MB26-5/8
2.6"	7/8"	BK26-7/8	MB26-7/8
2.7"	1/2"	BK27-1/2	MB28-1/2
2.7"	5/8"	BK27-5/8	MB28-5/8
2.7"	7/8"	BK27-7/8	MB28-7/8
2.95"	1/2"	BK28-1/2	MB30-1/2
2.95"	5/8"	BK28-5/8	MB30-5/8
2.95"	7/8"	BK28-7/8	MB30-7/8
3.15"	1/2"	BK30-1/2	MB31-1/2
3.15"	5/8"	BK30-5/8	MB31-5/8
3.15"	7/8"	BK30-7/8	MB31-7/8
3.25"	1/2"	---	MB33-1/2
3.25"	5/8"	---	MB33-5/8
3.25"	7/8"	---	MB33-7/8
3.35"	1/2"	BK32-1/2	MB34-1/2
3.35"	5/8"	BK32-5/8	MB34-5/8
3.35"	7/8"	BK32-7/8	MB34-7/8
3.55"	1/2"	BK34-1/2	MB35-1/2
3.55"	5/8"	BK34-5/8	MB35-5/8
3.55"	7/8"	BK34-7/8	MB35-7/8
3.75"	1/2"	BK36-1/2	MB38-1/2
3.75"	5/8"	BK36-5/8	MB38-5/8
3.75"	7/8"	BK36-7/8	MB38-7/8
3.95"	1/2"	BK40-1/2	MB40-1/2
3.95"	5/8"	BK40-5/8	MB40-5/8
3.95"	7/8"	BK40-7/8	MB40-7/8
4.25"	1/2"	BK45-1/2	MB43-1/2
4.25"	5/8"	BK45-5/8	MB43-5/8
4.25"	7/8"	BK45-7/8	MB43-7/8
4.25"	1 1/8"	BK45-1-1/8	MB43-1-1/8
4.45"	1/2"	BK47-1/2	MB45-1/2
4.45"	5/8"	BK47-5/8	MB45-5/8
4.45"	7/8"	BK47-7/8	MB45-7/8
4.45"	1 1/8"	BK47-1-1/8	MB45-1-1/8
4.75"	1/2"	BK50-1/2	MB48-1/2
4.75"	5/8"	BK50-5/8	MB48-5/8
4.75"	7/8"	BK50-7/8	MB48-7/8
4.75"	1 1/8"	BK50-1-1/8	MB48-1-1/8
4.95"	1/2"	BK52-1/2	MB50-1/2
4.95"	5/8"	BK52-5/8	MB50-5/8
4.95"	7/8"	BK52-7/8	MB50-7/8
4.95"	1 1/8"	BK52-1-1/8	MB50-1-1/8

Use with 3L & A(4L) V-Belts
 Additional Sizes Available Upon Request

SINGLE GROOVE FIXED BORE "B" SECTION | cast iron

OUTSIDE DIAMETER	BORE SIZE	POWER DRIVE NUMBER	MASKA NUMBER
5.25"	1/2"	BK55-1/2	MB53-1/2
5.25"	5/8"	BK55-5/8	MB53-5/8
5.25"	7/8"	BK55-7/8	MB53-7/8
5.25"	1 1/8"	BK55-1-1/8	MB53-1-1/8
5.45"	1/2"	---	MB55-1/2
5.45"	5/8"	BK57-5/8	MB55-5/8
5.45"	7/8"	BK57-7/8	MB55-7/8
5.45"	1 1/8"	BK57-1-1/8	MB55-1-1/8
5.75"	1/2"	BK60-1/2	MB58-1/2
5.75"	5/8"	BK60-5/8	MB58-5/8
5.75"	7/8"	BK60-7/8	MB58-7/8
5.75"	1 1/8"	BK60-1-1/8	MB58-1-1/8
5.95"	1/2"	BK62-1/2	MB60-1/2
5.95"	5/8"	BK62-5/8	MB60-5/8
5.95"	7/8"	BK62-7/8	MB60-7/8
5.95"	1 1/8"	BK62-1-1/8	MB60-1-1/8
6.25"	1/2"	---	MB63-1/2
6.25"	5/8"	BK65-5/8	MB63-5/8
6.25"	7/8"	---	MB63-7/8
6.25"	1 1/8"	BK65-1-1/8	MB63-1-1/8
6.45"	5/8"	BK67-5/8	MB65-5/8
6.45"	7/8"	BK67-7/8	MB65-7/8
6.45"	1 1/8"	BK67-1-1/8	MB65-1-1/8
6.75"	5/8"	BK70-5/8	MB68-5/8
6.75"	7/8"	BK70-7/8	MB68-7/8
6.75"	1 1/8"	BK70-1-1/8	MB68-1-1/8
6.95"	1/2"	---	MB70-1/2
6.95"	5/8"	---	MB70-5/8
6.95"	7/8"	---	MB70-7/8
6.95"	1 1/8"	BK72-1-1/8	MB70-1-1/8
7.25"	1/2"	---	MB73-1/2
7.25"	7/8"	---	MB73-7/8
7.25"	1 1/8"	BK75-1-1/8	MB73-1-1/8
7.75"	1/2"	---	MB78-1/2
7.75"	5/8"	BK80-5/8	MB78-5/8
7.75"	7/8"	BK80-7/8	MB78-7/8
7.75"	1 1/8"	BK80-1-1/8	MB78-1-1/8
8.0"	1/2"	---	MB80-1/2
8.0"	5/8"	---	MB80-5/8
8.0"	7/8"	---	MB80-7/8
8.0"	1 1/8"	---	MB80-1-1/8

Use with 3L & A(4L) V-Belts
 Additional Sizes Available Upon Request

BK52-5/8



VARIABLE PITCH SINGLE GROOVE HVAC | cast iron

OUTSIDE DIAMETER	BORE SIZE	POWER DRIVE NUMBER	MASKA NUMBER
2.5"	1/2"	1VL25-1/2PD	MVL25-1/2
2.5"	5/8"	1VL25-5/8PD	MVL25-5/8
2.87"	1/2"	1VL30-1/2PD	MVL30-1/2
2.87"	5/8"	1VL30-5/8PD	MVL30-5/8
3.15"	1/2"	1VL34-1/2PD	MVL34-1/2
3.15"	5/8"	1VL34-5/8PD	MVL34-5/8
3.15"	3/4"	1VL34-3/4PD	MVL34-3/4
3.75"	1/2"	1VL40-1/2PD	MVL40-1/2
3.75"	5/8"	1VL40-5/8PD	MVL40-5/8
3.75"	3/4"	1VL40-3/4PD	MVL40-3/4
3.75"	7/8"	1VL40-7/8PD	MVL40-7/8
4.15"	1/2"	1VL44-1/2PD	MVL44-1/2
4.15"	5/8"	1VL44-5/8PD	MVL44-5/8
4.15"	3/4"	1VL44-3/4PD	MVL44-3/4
4.15"	7/8"	1VL44-7/8PD	MVL44-7/8
4.75"	1/2"	1VM50-1/2PD	---
4.75"	5/8"	1VM50-5/8PD	---
4.75"	7/8"	1VM50-7/8PD	---

Use with A(4L), B(5L), and 3L V-Belts

1VL40-5/8



SINGLE GROOVE FIXED BORE HVAC | cast iron

OUTSIDE DIAMETER	BORE SIZE	POWER DRIVE NUMBER	MASKA NUMBER
4.93"	5/8"	AL54-5/8	MFAL54-5/8
4.93"	3/4"	AL54-3/4	MFAL54-3/4
4.93"	1"	AL54-1	MFAL54-1
5.93"	5/8"	AL64-5/8	MFAL64-5/8
5.93"	3/4"	AL64-3/4	MFAL64-3/4
5.93"	1"	AL64-1	MFAL64-1
6.93"	5/8"	AL74-5/8	MFAL74-5/8
6.93"	3/4"	AL74-3/4	MFAL74-3/4
6.93"	1"	AL74-1	MFAL74-1
7.93"	5/8"	AL84-5/8	MFAL84-5/8
7.93"	3/4"	AL84-3/4	MFAL84-3/4
7.93"	1"	AL84-1	MFAL84-1
8.93"	3/4"	AL94-3/4	MFAL94-3/4
8.93"	1"	AL94-1	MFAL94-1
9.93"	3/4"	AL104-3/4	MFAL104-3/4
9.93"	1"	AL104-1	MFAL104-1
10.93"	3/4"	AL114-3/4	MFAL114-3/4
10.93"	1"	AL114-1	MFAL114-1
11.93"	3/4"	AL124-3/4	MFAL124-3/4
11.93"	1"	AL124-1	MFAL124-1
14.16"	3/4"	AM144-3/4	MFAM144-3/4
14.16"	1"	AM144-1	MFAM144-1

Use with A (4L) V-Belts

AL84-3/4

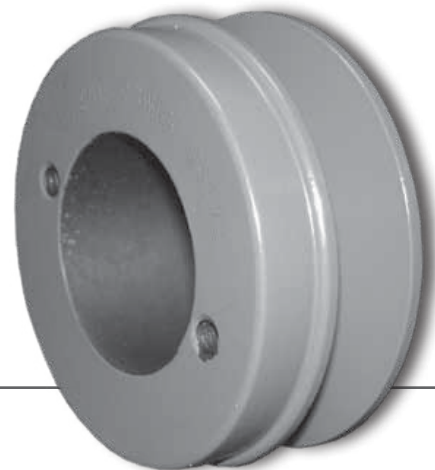


SINGLE GROOVE "A/B" SECTION BUSHING TYPE | *cast iron*

OUTSIDE DIAMETER	POWER DRIVE NUMBER	MASKA NUMBER
3.15"	BK30H	MBL31
3.35"	BK32H	MBL33
3.55"	BK34H	MBL35
3.75"	BK36H	MBL37
3.95"	BK40H	MBL39
4.25"	BK45H	MBL42
4.45"	BK47H	MBL44
4.75"	BK50H	MBL47
4.95"	BK52H	MBL49
5.25"	BK55H	MBL52
5.45"	BK57H	MBL54
5.75"	BK60H	MBL57
5.95"	BK62H	MBL59
6.25"	BK65H	MBL62
6.45"	BK67H	MBL64
6.75"	BK70H	MBL67
6.95"	BK72H	MBL69
7.25"	BK75H	MBL72
7.45"	BK77H	MBL74
7.75"	BK80H	MBL77
8.25"	BK85H	MBL82
8.75"	BK90H	MBL87
9.25"	BK95H	MBL92
9.75"	BK100H	MBL97
10.25"	BK105H	MBL102
10.75"	BK110H	MBL107
11.25"	BK115H	MBL112
11.75"	BK120H	MBL117
12.75"	BK130H	MBL127
13.75"	BK140H	MBL137
14.75"	BK150H	MBL147
15.75"	BK160H	MBL157
18.75"	BK190H	MBL187

Use with A(4L) & B(5L) V-Belts
Bushings on page 9

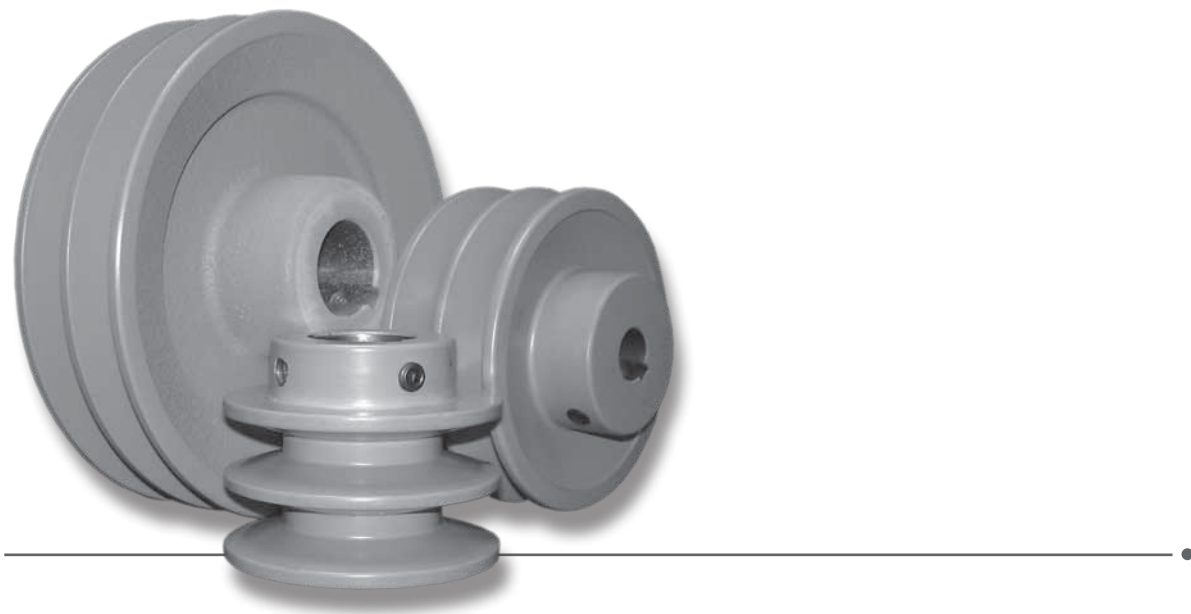
BK30H



DOUBLE GROOVE "A/B" SECTION FIXED BORE | cast iron

OUTSIDE DIAMETER	BORE SIZE	POWER DRIVE NUMBER	MASKA NUMBER
2.5"	1/2"	2BK25-1/2	2MB25-1/2
2.5"	5/8"	2BK25-5/8	2MB25-5/8
2.5"	7/8"	2BK25-7/8	2MB25-7/8
2.5"	1 1/8"	2BK25-1-1/8	2MB25-1-1/8
2.95"	5/8"	2BK28-5/8	2MB30-5/8
2.95"	7/8"	2BK28-7/8	2MB30-7/8
2.95"	1 1/8"	2BK28-1-1/8	2MB30-1-1/8
3.95"	5/8"	2BK40-5/8	2MB40-5/8
3.95"	7/8"	2BK40-7/8	2MB40-7/8
3.95"	1 1/8"	2BK40-1-1/8	2MB40-1-1/8
4.45"	5/8"	---	2MB45-5/8
4.45"	7/8"	2BK47-7/8	2MB45-7/8
4.45"	1 1/8"	2BK47-1-1/8	2MB45-1-1/8
4.95"	5/8"	---	2MB50-5/8
4.95"	7/8"	2BK52-7/8	2MB50-7/8
4.95"	1 1/8"	2BK52-1-1/8	2MB50-1-1/8
5.45"	5/8"	2BK57-5/8	2MB55-5/8
5.45"	7/8"	2BK57-7/8	2MB55-7/8
5.45"	1 1/8"	2BK57-1-1/8	2MB55-1-1/8
5.95"	5/8"	2BK62-5/8	2MB60-5/8
5.95"	7/8"	2BK62-7/8	2MB60-7/8
5.95"	1 1/8"	2BK62-1-1/8	2MB60-1-1/8
6.75"	5/8"	2BK70-5/8	2MB68-5/8
6.75"	1 1/8"	2BK70-1-1/8	2MB68-1-1/8
7.75"	5/8"	2BK80-5/8	2MB78-5/8
7.75"	7/8"	2BK80-7/8	2MB78-7/8
7.75"	1 1/8"	2BK80-1-1/8	2MB78-1-1/8
8.75"	1 1/8"	2BK90-1-1/8	2MB88-1-1/8

Use with A(4L) & B(5L) V-Belts
 Additional Sizes Available Upon Request



DOUBLE GROOVE "A/B" SECTION BUSHING TYPE | *cast iron*

OUTSIDE DIAMETER	POWER DRIVE NUMBER	MASKA NUMBER
3.35"	2BK32H	2MBL33
3.55"	2BK34H	2MBL35
3.75"	2BK36H	2MBL37
3.95"	2BK40H	2MBL39
4.25"	2BK45H	2MBL42
4.45"	2BK47H	2MBL44
4.75"	2BK50H	2MBL47
4.95"	2BK52H	2MBL49
5.25"	2BK55H	2MBL52
5.45"	2BK57H	2MBL54
5.75"	2BK60H	2MBL57
5.95"	2BK62H	2MBL59
6.25"	2BK65H	2MBL62
6.45"	2BK67H	2MBL64
6.75"	2BK70H	2MBL67
6.95"	---	2MBL69
7.75"	2BK80H	2MBL77
8.75"	2BK90H	2MBL87
9.75"	2BK100H	2MBL97

Use with A(4L) & B(5L) V-Belts
Additional Sizes Available Upon Request

2BK40H



H-7/8

SPLIT TAPER BUSHINGS

POWER DRIVE NUMBER	BORE SIZE
H-1/2	1/2"
H-9/16	9/16"
H-5/8	5/8"
H-3/4	3/4"
H-7/8	7/8"
H-1	1"
H-1-1/16	1 1/16"
H-1-1/8	1 1/8"
H-1-3/16	1 3/16"
H-1-1/4	1 1/4"
H-1-5/16	1 5/16"
H-1-3/8	1 3/8"
H-1-7/16	1 7/16"
H-1-1/2	1 1/2"

QD BUSHINGS

MASKA NUMBER	BORE SIZE
L-1/2	1/2"
L-9/16	9/16"
L-5/8	5/8"
L-3/4	3/4"
L-7/8	7/8"
L-1	1"
L-1-1/16	1 1/16"
L-1-1/8	1 1/8"
L-1-3/16	1 3/16"
L-1-1/4	1 1/4"
L-1-5/16	1 5/16"
L-1-3/8	1 3/8"
L-1-7/16	1 7/16"
L-1-1/2	1 1/2"

SINGLE GROOVE FIXED BORE "A" SECTION | die cast

OUTSIDE DIAMETER	BORE SIZE	STOCK NUMBER
1.5"	3/8"	150-A-3/8
1.5"	1/2"	150-A-1/2
1.75"	3/8"	175-A-3/8
1.75"	1/2"	175-A-1/2
1.75"	5/8"	175-A-5/8
1.75"	3/4"	175-A-3/4*
2.0"	3/8"	200-A-3/8
2.0"	1/2"	200-A-1/2
2.0"	5/8"	200-A-5/8
2.0"	3/4"	200-A-3/4*
2.25"	3/8"	225-A-3/8
2.25"	1/2"	225-A-1/2
2.25"	5/8"	225-A-5/8
2.5"	3/8"	250-A-3/8
2.5"	1/2"	250-A-1/2
2.5"	5/8"	250-A-5/8
2.75"	3/8"	275-A-3/8
2.75"	1/2"	275-A-1/2
2.75"	5/8"	275-A-5/8
3.0"	1/2"	300-A-1/2
3.0"	5/8"	300-A-5/8
3.0"	3/4"	300-A-3/4*
3.25"	1/2"	325-A-1/2
3.25"	5/8"	325-A-5/8
3.5"	1/2"	350-A-1/2
3.5"	5/8"	350-A-5/8
4.0"	1/2"	400-A-1/2
4.0"	5/8"	400-A-5/8
4.5"	1/2"	450-A-1/2
4.5"	5/8"	450-A-5/8
5.0"	1/2"	500-A-1/2
5.0"	5/8"	500-A-5/8
5.5"	1/2"	550-A-1/2
5.5"	5/8"	550-A-5/8
6.0"	1/2"	600-A-1/2
6.0"	5/8"	600-A-5/8

Use with A(4L) V-Belts

*Discontinued, while supplies last



250-A-1/2

SINGLE GROOVE FIXED BORE "B" SECTION | die cast

OUTSIDE DIAMETER	BORE SIZE	STOCK NUMBER
2.0"	1/2"	200-B-1/2
2.0"	5/8"	200-B-5/8
2.25"	1/2"	225-B-1/2*
2.25"	5/8"	225-B-5/8*
2.5"	1/2"	250-B-1/2
2.5"	5/8"	250-B-5/8
2.75"	5/8"	275-B-5/8*
3.0"	1/2"	300-B-1/2
3.0"	5/8"	300-B-5/8
3.25"	1/2"	325-B-1/2*
3.25"	5/8"	325-B-5/8*
3.5"	1/2"	350-B-1/2*
3.5"	5/8"	350-B-5/8*
4.0"	1/2"	400-B-1/2*
4.0"	5/8"	400-B-5/8*
4.25"	5/8"	400-B-5/8*

* Discontinued, while supplies last



275-B-5/8



325VP-5/8

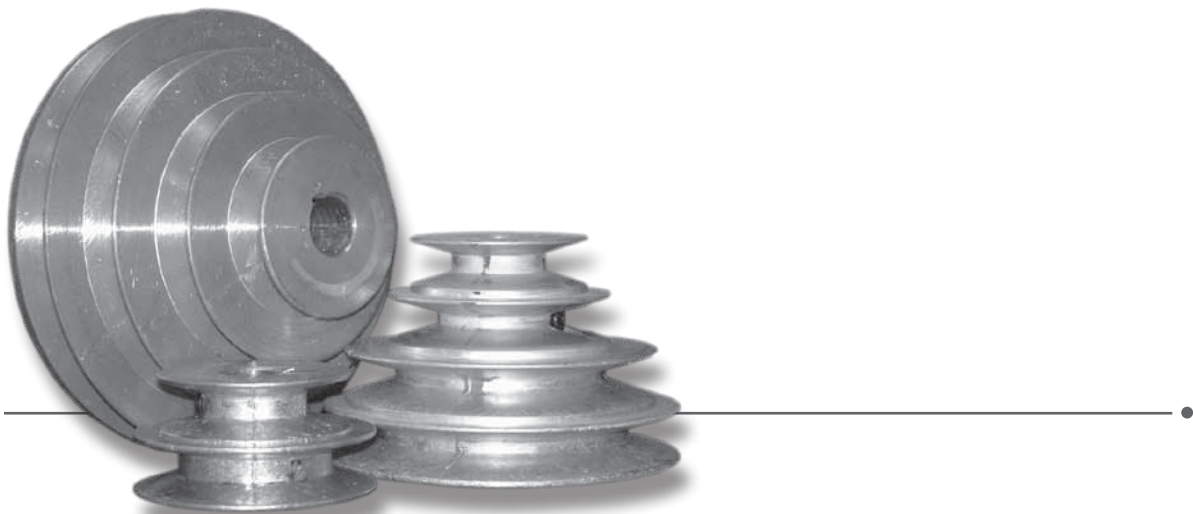
VARIABLE PITCH SINGLE GROOVE HVAC | die cast

OUTSIDE DIAMETER	BORE SIZE	STOCK NUMBER
3.25"	1/2"	325VP-1/2
3.25"	5/8"	325VP-5/8
3.5"	1/2"	350VP-1/2
3.5"	5/8"	350VP-5/8
3.75"	1/2"	375VP-1/2
3.75"	5/8"	375VP-5/8
4.0"	1/2"	400VP-1/2
4.0"	5/8"	400VP-5/8

MULTIPLE GROOVE "A" SECTION STEP PULLEYS | die cast

STOCK NUMBER	NUMBER OF STEPS	1ST STEP	2ND STEP	3RD STEP	4TH STEP	BORE SIZE
113-1/2	TWO	2"	2 1/2"	---	---	1/2"
113-5/8		2"	2 1/2"	---	---	5/8"
150-1/2		2"	3"	---	---	1/2"
150-5/8		2"	3"	---	---	5/8"
145-1/2	THREE	1 3/4"	2 1/4"	2 3/4"	---	1/2"
145-5/8		1 3/4"	2 1/4"	2 3/4"	---	5/8"
144-1/2*		2 1/4"	2 3/4"	3 1/4"	---	1/2"
144-5/8*		2 1/4"	2 3/4"	3 1/4"	---	5/8"
144-3/4*		2 1/4"	2 3/4"	3 1/4"	---	3/4"
146-1/2		2"	3"	4"	---	1/2"
146-5/8		2"	3"	4"	---	5/8"
146-3/4		2"	3"	4"	---	3/4"
149-1/2		3"	3 1/2"	4"	---	1/2"
149-5/8		3"	3 1/2"	4"	---	5/8"
149-3/4		3"	3 1/2"	4"	---	3/4"
148-1/2		3 1/2"	4"	4 1/2"	---	1/2"
148-5/8		3 1/2"	4"	4 1/2"	---	5/8"
148-3/4		3 1/2"	4"	4 1/2"	---	3/4"
140-1/2	FOUR	1 3/4"	2 1/4"	2 3/4"	3 1/4"	1/2"
140-5/8		1 3/4"	2 1/4"	2 3/4"	3 1/4"	5/8"
140-3/4		1 3/4"	2 1/4"	2 3/4"	3 1/4"	3/4"
141-1/2		2"	2 1/2"	3 1/2"	4"	1/2"
141-5/8		2"	2 1/2"	3 1/2"	4"	5/8"
141-3/4		2"	2 1/2"	3 1/2"	4"	3/4"
143-1/2		3"	3 1/2"	4"	4 1/2"	1/2"
143-5/8		3"	3 1/2"	4"	4 1/2"	5/8"
143-3/4		3"	3 1/2"	4"	4 1/2"	3/4"
147-1/2		2"	3"	4"	5"	1/2"
147-5/8		2"	3"	4"	5"	5/8"
147-3/4		2"	3"	4"	5"	3/4"

* Discontinued, while supplies last



V-BELTS 3L

BELT NUMBER	OUTSIDE LENGTH
3L130	13"
3L140	14"
3L150	15"
3L160	16"
3L170	17"
3L180	18"
3L190	19"
3L200	20"
3L210	21"
3L220	22"
3L230	23"
3L240	24"

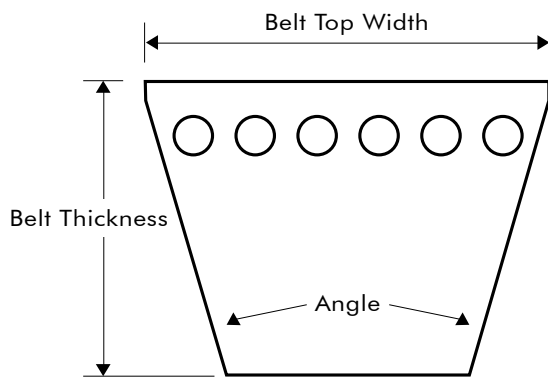
BELT NUMBER	OUTSIDE LENGTH
3L250	25"
3L260	26"
3L270	27"
3L280	28"
3L290	29"
3L300	30"
3L310	31"
3L320	32"
3L330	33"
3L340	34"
3L350	35"
3L360	36"

Additional Sizes Available Upon Request

BESTORQ®



V-Belt Cross-Section



DIMENSIONS

	TOP WIDTH	THICKNESS	ANGLE
3L	0.38"	0.24"	40
A or 4L	0.51"	0.34"	40
B or 5L	0.66"	0.43"	40

V-BELTS A(4L)

ORDER NUMBER	REFERENCE NUMBER	OUTSIDE LENGTH
A13	4L150	15"
A14	4L160	16"
A15	4L170	17"
A16	4L180	18"
A17	4L190	19"
A18	4L200	20"
A19	4L210	21"
A20	4L220	22"
A21	4L230	23"
A22	4L240	24"
A23	4L250	25"
A24	4L260	26"
A25	4L270	27"
A26	4L280	28"
A27	4L290	29"
A28	4L300	30"
A29	4L310	31"
A30	4L320	32"
A31	4L330	33"
A32	4L340	34"
A33	4L350	35"
A34	4L360	36"
A35	4L370	37"
A36	4L380	38"
A37	4L390	39"
A38	4L400	40"
A39	4L410	41"
A40	4L420	42"
A41	4L430	43"
A42	4L440	44"
A43	4L450	45"
A44	4L460	46"
A45	4L470	47"
A46	4L480	48"
A47	4L490	49"
A48	4L500	50"
A49	4L510	51"
A50	4L520	52"
A51	4L530	53"
A52	4L540	54"
A53	4L550	55"

ORDER NUMBER	REFERENCE NUMBER	OUTSIDE LENGTH
A54	4L560	56"
A55	4L570	57"
A56	4L580	58"
A57	4L590	59"
A58	4L600	60"
A59	4L610	61"
A60	4L620	62"
A61	4L630	63"
A62	4L640	64"
A63	4L650	65"
A64	4L660	66"
A65	4L670	67"
A66	4L680	68"
A67	4L690	69"
A68	4L700	70"
A69	4L710	71"
A70	4L720	72"
A71	4L730	73"
A72	4L740	74"
A73	4L750	75"
A74	4L760	76"
A75	4L770	77"
A76	4L780	78"
A77	4L790	79"
A78	4L800	80"
A79	4L810	81"
A80	4L820	82"
A81	4L830	83"
A82	4L840	84"
A83	4L850	85"
A84	4L860	86"
A85	4L870	87"
A86	4L880	88"
A87	4L890	89"
A88	4L900	90"
A89	4L910	91"
A90	4L920	92"
A91	4L930	93"
A92	4L940	94"
A93	4L950	95"
A94	4L960	96"

AX series available upon request
 Additional Sizes Available Upon Request

V-BELTS B(5L)

ORDER NUMBER	REFERENCE NUMBER	OUTSIDE LENGTH
B20	5L230	23"
B21	5L240	24"
B22	5L250	25"
B23	5L260	26"
B24	5L270	27"
B25	5L280	28"
B26	5L290	29"
B27	5L300	30"
B28	5L310	31"
B29	5L320	32"
B30	5L330	33"
B31	5L340	34"
B32	5L350	35"
B33	5L360	36"
B34	5L370	37"
B35	5L380	38"
B36	5L390	39"
B37	5L400	40"
B38	5L410	41"
B39	5L420	42"
B40	5L430	43"
B41	5L440	44"
B42	5L450	45"
B43	5L460	46"
B44	5L470	47"
B45	5L480	48"
B46	5L490	49"
B47	5L500	50"
B48	5L510	51"
B49	5L520	52"
B50	5L530	53"
B51	5L540	54"
B52	5L550	55"
B53	5L560	56"
B54	5L570	57"
B55	5L580	58"
B56	5L590	59"

ORDER NUMBER	REFERENCE NUMBER	OUTSIDE LENGTH
B57	5L600	60"
B58	5L610	61"
B59	5L620	62"
B60	5L630	63"
B61	5L640	64"
B62	5L650	65"
B63	5L660	66"
B64	5L670	67"
B65	5L680	68"
B66	5L690	69"
B67	5L700	70"
B68	5L710	71"
B69	5L720	72"
B70	5L730	73"
B71	5L740	74"
B72	5L750	75"
B73	5L760	76"
B74	5L770	77"
B75	5L780	78"
B76	5L790	79"
B77	5L800	80"
B78	5L810	81"
B79	5L820	82"
B80	5L830	83"
B81	5L840	84"
B82	5L850	85"
B83	5L860	86"
B84	5L870	87"
B85	5L880	88"
B86	5L890	89"
B87	5L900	90"
B88	5L910	91"
B89	5L920	92"
B90	5L930	93"
B91	5L940	94"
B92	5L950	95"
B93	5L960	96"

BX series available upon request

Additional Sizes Available Upon Request



BESTORQ®

PULLEYS & BELTS

CATALOG 401

WWW.PEMSMOTORS.COM

PRECISION ELECTRIC MOTOR SALES • OWOSSO, MICHIGAN • P: 800.234.5687 F: 888.234.5687