

# PulpStar®

## Municipal Solid Waste Processing

Municipal Solid Waste \* MRF Rejects \* Maximum Recycling



### PulpStar installed at a household waste processing plant, Maine, USA

The PulpStar sits at the head of the process as a primary separator.

Organics go one way and the inert materials go the other. The organics are used for renewable energy generation.

The inert plastics and metals are recovered for recycling

PulpStar processing machine at Crowley Engineering, Cork, Ireland ready for shipping.

This has a processing capacity of 10 tonne per hour





PulpStar 5 on flatpack ready for shipping. Capacity 5 tonnes per hour MSW



PulpStar 10 with client specified discharge end. Capacity 10 tonnes per hour MSW

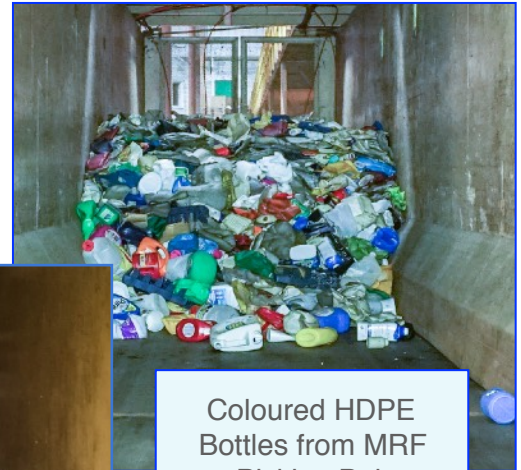
### PulpStar Outputs

Hards plastics and metals are recovered on a MRF either manually or in large facilities, by automated processes. The plastics and metals are ready for baling and sale to the recyclers.

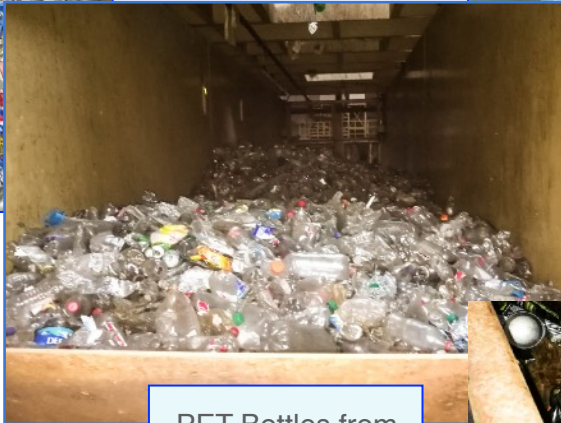
The Raw Organic Fraction is ready for refining and utilisation in either renewable energy production or composting.



Aluminium Cans  
from Eddy Current  
Separator



Coloured HDPE  
Bottles from MRF  
Picking Belt



PET Bottles from  
MRF Picking Belt



Ferrous Cans from Overband  
Magnetic Separator

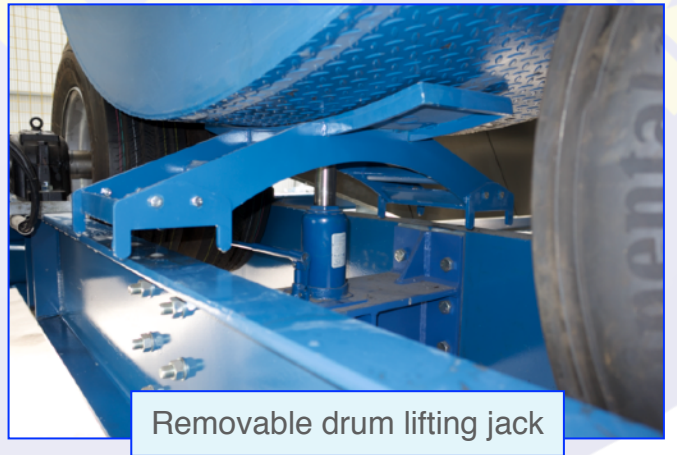
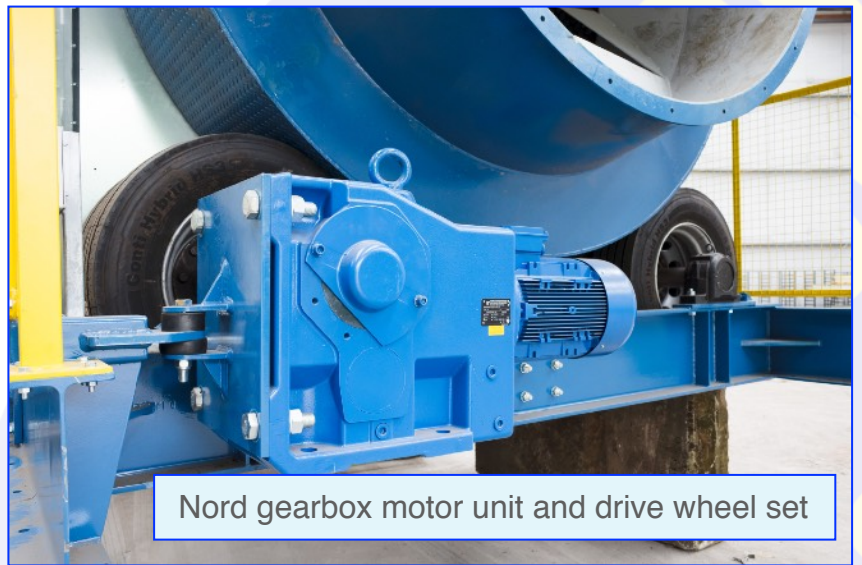


Raw Organic Fraction from the PulpStar's  
integral Trommel Screen

The Raw Organic Fraction (ROF) is from the food, card and paper within the MSW. It is around 50% - 60% of the weight of the incoming MSW. The moisture content is around 50%.

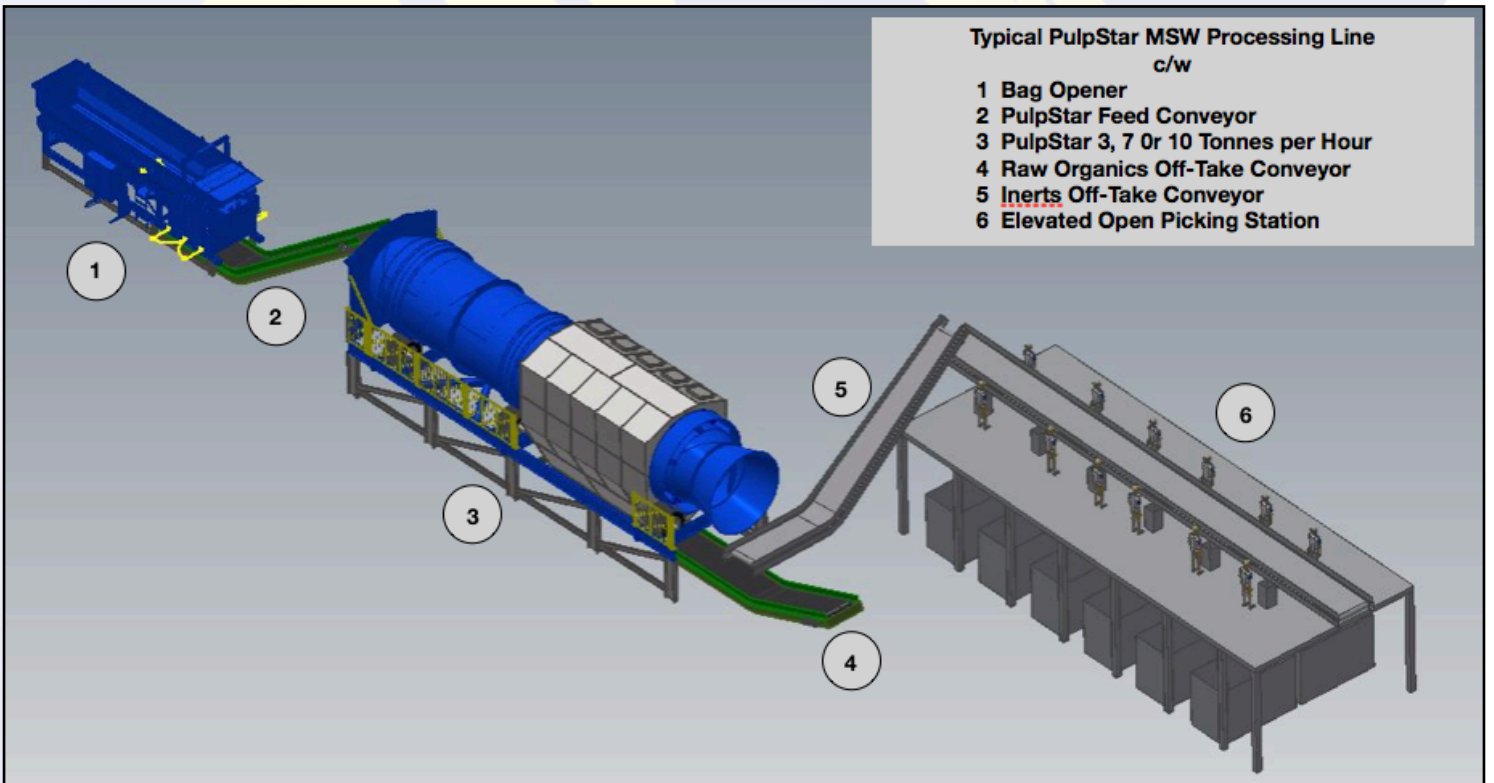
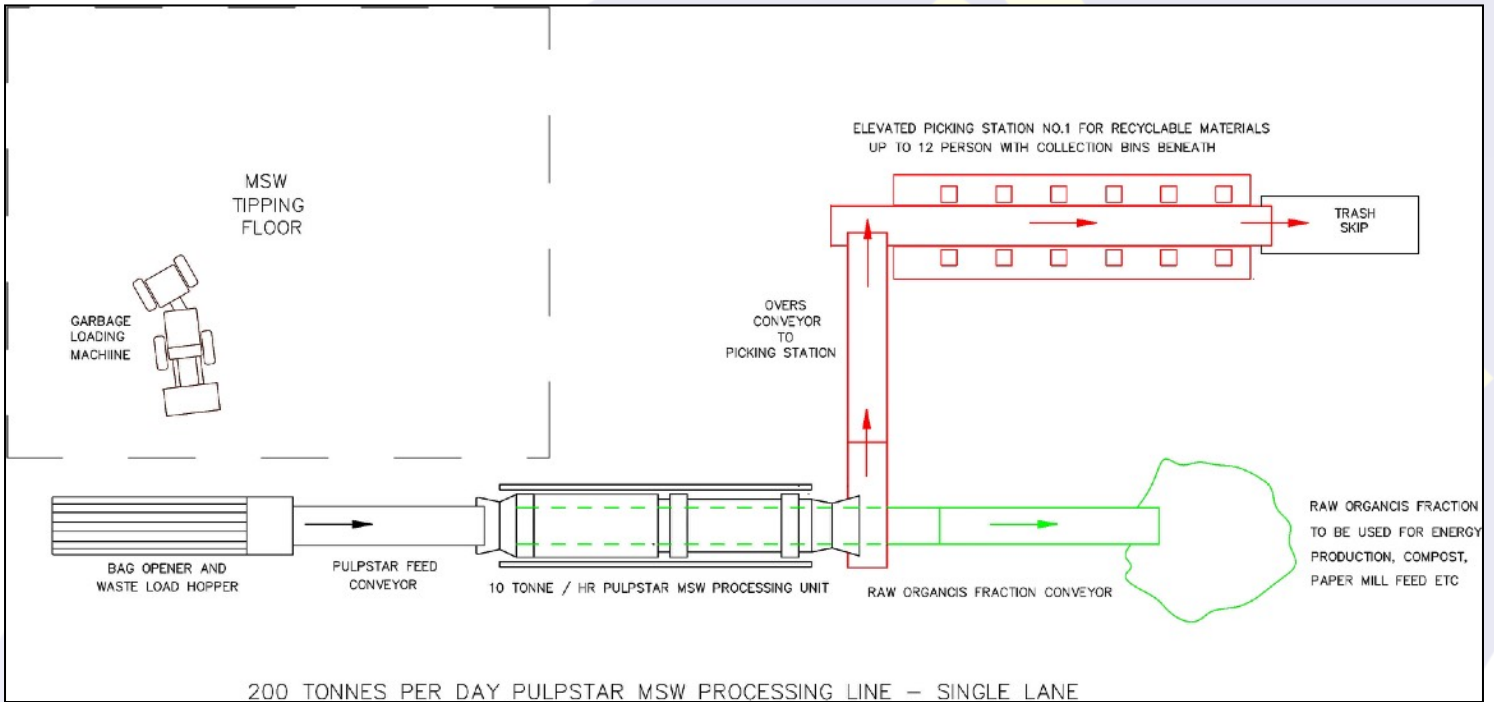
This is a valuable material for refining and making 'compost like material' for land remediation, as a substrate for AD plant biogas production or for gasification.

The material will contain small inerts but can be refined to clean pulp using a OCC washing system shown in drawing PS 1084 below

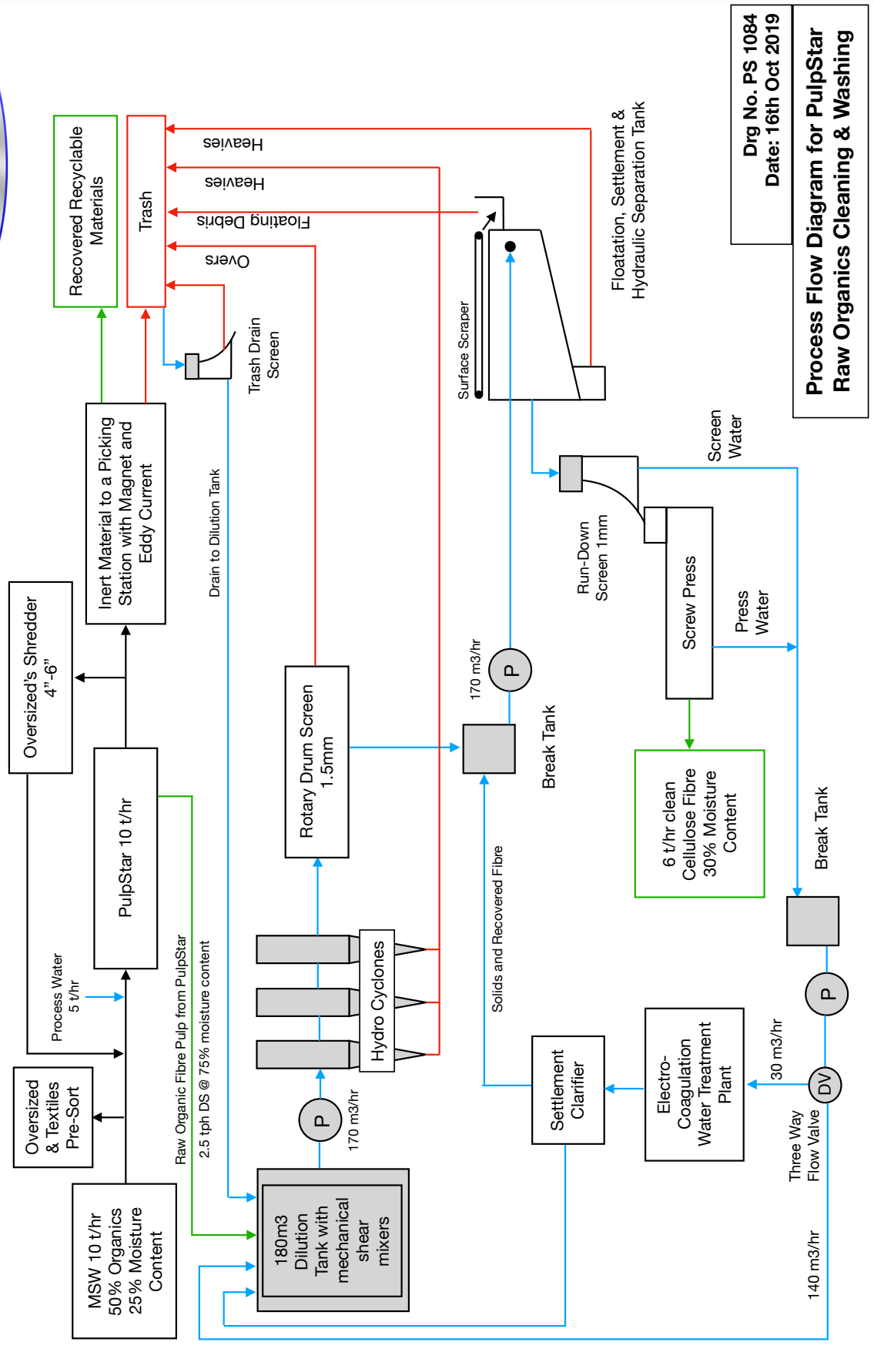


**Basic Layout of a 200 Tonnes per day MSW Processing Line**

**Bag Opener**  
**10 tonne per hour PulpStar**  
**Recyclable Material Picking Station**  
**Raw Organic Fraction Off Take Conveyor**



**DynaM'eau**





# PulpStar MSW Processing & Recycling



Crowley Environmental is division of Crowley Engineering, Cork, Ireland making OEM products for the solid waste processing, water, gasification and biogas industries. With nearly a half century of business experience of engineering designing and fabrication, Crowley Engineering are your global partner in the processing of municipal solid waste and related sectors.

Contact us for expert technical help.



## Products

### Crowley Environmental

PulpStar MSW Processing Technology

ElectroCoagulation Waste Water Treatment

Close coupled gasifier, 6MW total using 52% moisture feedstock

Gasifier to steam to turbine electrical generation sets

On-farm biogas plants

Biogas Development and Investment

Biogas digestate concentrators and ammonia recovery

In Vessel compost systems

Biological water treatment

### Crowley Engineering

Grain Driers

Conveyors & Elevators

Feed mills complete

Agricultural silos & augers

Marine Pontoons

Helicopter escape simulators