

PUMPS & FLUID ENDS

20,000 PSI



THE UNx™ ADVANTAGE FEATURES AND BENEFITS

Through nearly fifteen years of service, the Jetstream 20,000 psi UNx™ Fluid End has remained the most efficient, easy-to-use, and versatile waterblast tool available. Standard on every Jetstream 20,000 psi unit or bareshaft pump, the 20,000 psi UNx™ Fluid End is also available as a bolt-on replacement for most manufacturer's pump models to replace a worn or inefficient pump or as a powerful addition to an existing Jetstream pump to increase the range of available working pressures. Models are available for use at up to 500 horsepower.

UNx™ Fluid End Features

Serviceability

- Five minute packing change
- Fifteen minute pop-out valve cartridge change
- No special tools or equipment required
- Plungers clamped, NOT threaded, for easy maintenance

Simplicity

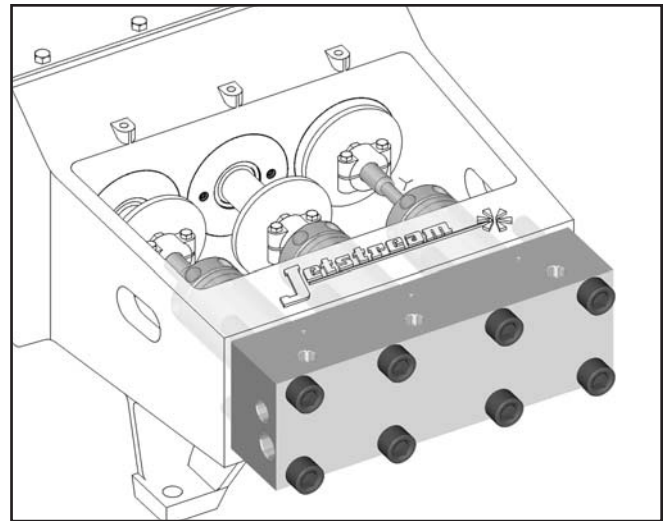
- Fewer parts than other 20,000 psi fluid ends
- Uni-Valve™ one-piece cartridges include suction & discharge valves, seats, springs, and seals
- Swing-down manifold for easy access to components

Versatility

- Fast in-the-field pressure range conversion with simple bolt-on Jetstream UNx™ Fluid Ends
- Convertibility of the UNx™ design allows one unit to do the work that another manufacturer would require multiple units or several hours of downtime to perform

20,000 psi UNx™ Fluid End Features

- Water lubricated packing set
- Carbide coated plungers
- Specially designed manifold connections are superior to industry standard connections and feature easily replaceable seals
- High volumetric efficiency
- All pressure-bearing components precision machined from high quality stainless steel

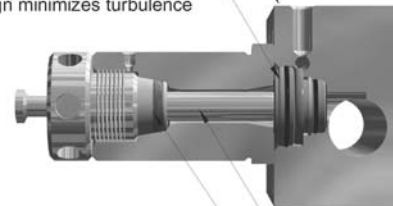


Uni-Valve™ Cartridge

- Combined suction and discharge valves in one self-contained part
- Slip fit for easy maintenance
- In-line design minimizes turbulence

Swing-Down Manifold

- Easy access to valves
- Weep holes indicate source of seal leaks



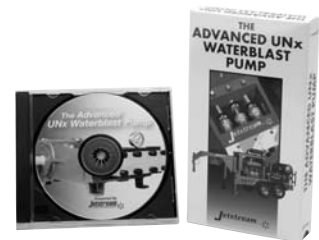
Uni-Pak™ Plunger Packing Set

- One piece packing/one piece brass
- Tapered for easy removal
- Water lubricated - no oil

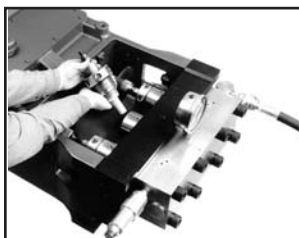
Carbide Coated Plungers

For more information on the UNx Fluid End design, order [The Advanced UNx Waterblast Pump video](#), available in VHS, DVD & CD-ROM formats.

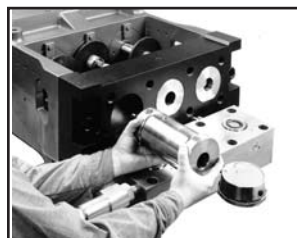
Part Number	Format
27437	VHS
28634	DVD
28635	CD-ROM



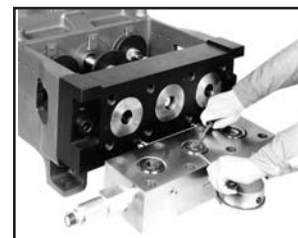
Five Minute Packing Change



Slide Out Stuffing Boxes



15 Minute Valve Replacement



PUMPS & FLUID ENDS

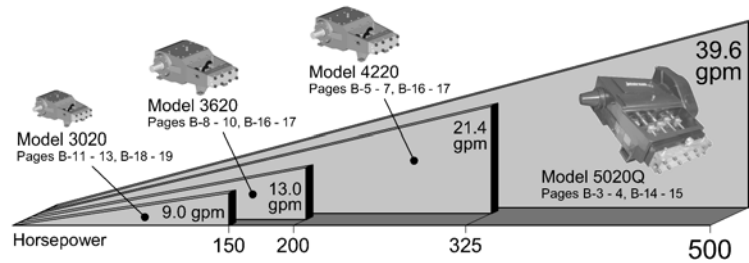
20,000 PSI



UNx™ FLUID ENDS AVAILABLE MODELS

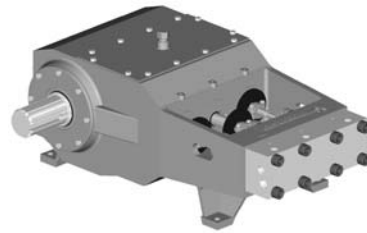
UNITS

- Choose from diesel or electric
- Select skid mount, 4-wheel steerable trailer, gooseneck trailer, or tandem trailer
- **See Section A for available models**



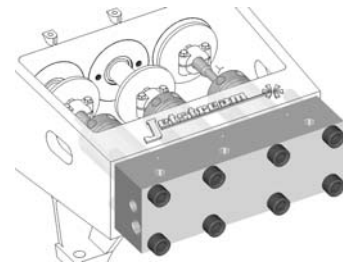
BARESHAF PUMPS

- Replace old, worn-out pumps
- Custom built systems
- Utilize existing engine and skid
- Available in sizes up to 500 HP
- Simple, safe, and easy to maintain
- **See Pages B-3 - 13 for available models**



FLUID ENDS

- Supplement an existing Jetstream UNx™ pump to increase range of available pressures.
- Pressure range conversions have been performed by two man teams at trade show demonstrations in fifteen minutes using hand tools and under six minutes with air tools!
- **See Pages B-14 - 19 for available models**



UNx™ FLUID END UPGRADES



Butterworth L450/200
Gardner-Denver TF450
See Pages B-20 - 21



Butterworth L375
Gardner-Denver TF375
See Pages B-22 - 23



NLB Quintuplex Pumps
Up to 250 horsepower
See Pages B-24 - 25



NLB Triplex Pumps
150 to 200 horsepower
See Pages B-26 - 27



Woma 150 Series
See Pages B-28 - 29

- Increase productivity and reduce operating costs by replacing an inefficient or worn fluid end on another manufacturer's pump with a Jetstream UNx™ Fluid End.
- Conversions available for all popular models.
- Bolt-on installation can be performed in minutes.
- Fewer parts, fewer problems.
- **See pages B-20 - 29 for some models available.**
- Consult factory for models not detailed in this catalog.

Also available for the following pump models:

- Butterworth L74/T300
- NLB 1012/TD-60
- Tritan P-313
- Tritan 5127
- Wheatley HP125
- Weatherford/American Aero FE-85/WBD-90
- Weatherford/American Aero FE-145/WBD-150 QD-100/QD-200

Other models available upon request. Contact Jetstream for details.

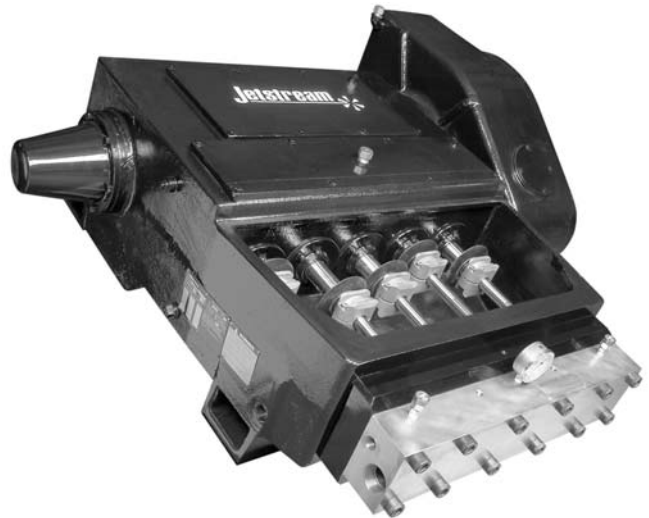
PUMPS & FLUID ENDS

20,000 PSI



UNx™ BARESHAFT PUMP MODEL 5020Q

The Jetstream model 5020Q waterblast pump is capable of power input of up to 500 horsepower and displacement over 39 gallons per minute at 20,000 psi. It is the most advanced and efficient high horsepower waterblast pump in the industry. Combining the strength and durability of a proven power end workhorse with the unparalleled simplicity, serviceability, and versatility of the UNx™ fluid end design, Jetstream bareshaft pumps are the best choice for those building their own system or replacing a complicated, worn, or unreliable pump.



- 500 horsepower
- Flow of over 39 gallons per minute at 20,000 psi*
- Five Plunger (quintuplex) design

UNx™ Fluid End Features

- Superior performance
- Greater flexibility in the field
- Reduced downtime and maintenance
- See UNx™ Features and Benefits on page B-1

UNx™ Power End Features

- Pressurized power end lubrication with oil filter and cooler
- Forged steel shotpeened crankshaft
- Center roller bearings support crankshaft

General Specifications

Max. Power Input		Plungers			Max. Pump RPM	Max. Pump Displacement*		Maximum Frame Load		Max. Operating Pressure		Total Weight		Gear Pack Ratio	Pump Oil Capacity	
		#	Stroke			gpm	lpm	lbs	N	psi	bar	lbs	kg		gal	l
hp	kW		in	mm												
500	373	5	5.00	127	413	39.6	150	26,500	117,900	20,000	1,379	5,430	2,460	4.84:1	12	45

Fluid End Specifications

Pump Part Number	Plunger Size		Connection Types**		Pump Displacement at Specified Pump Speeds*								Max. Operating Pressure		
	No.	Diameter			150 RPM		200 RPM		300 RPM		413 RPM				
		in	mm	gpm	lpm	gpm	lpm	gpm	lpm	gpm	lpm	psi	bar		
54765	#11	1.062	26.97	20K Port Female	20K HHP Port Female	14.4	54.5	19.2	72.6	28.8	108.9	39.6	150	20,000	1,379

* Displacement (flow) values represented refer to "theoretical" flow, neglecting inefficiency resulting from compressibility of water and expansion of pressure-bearing components.

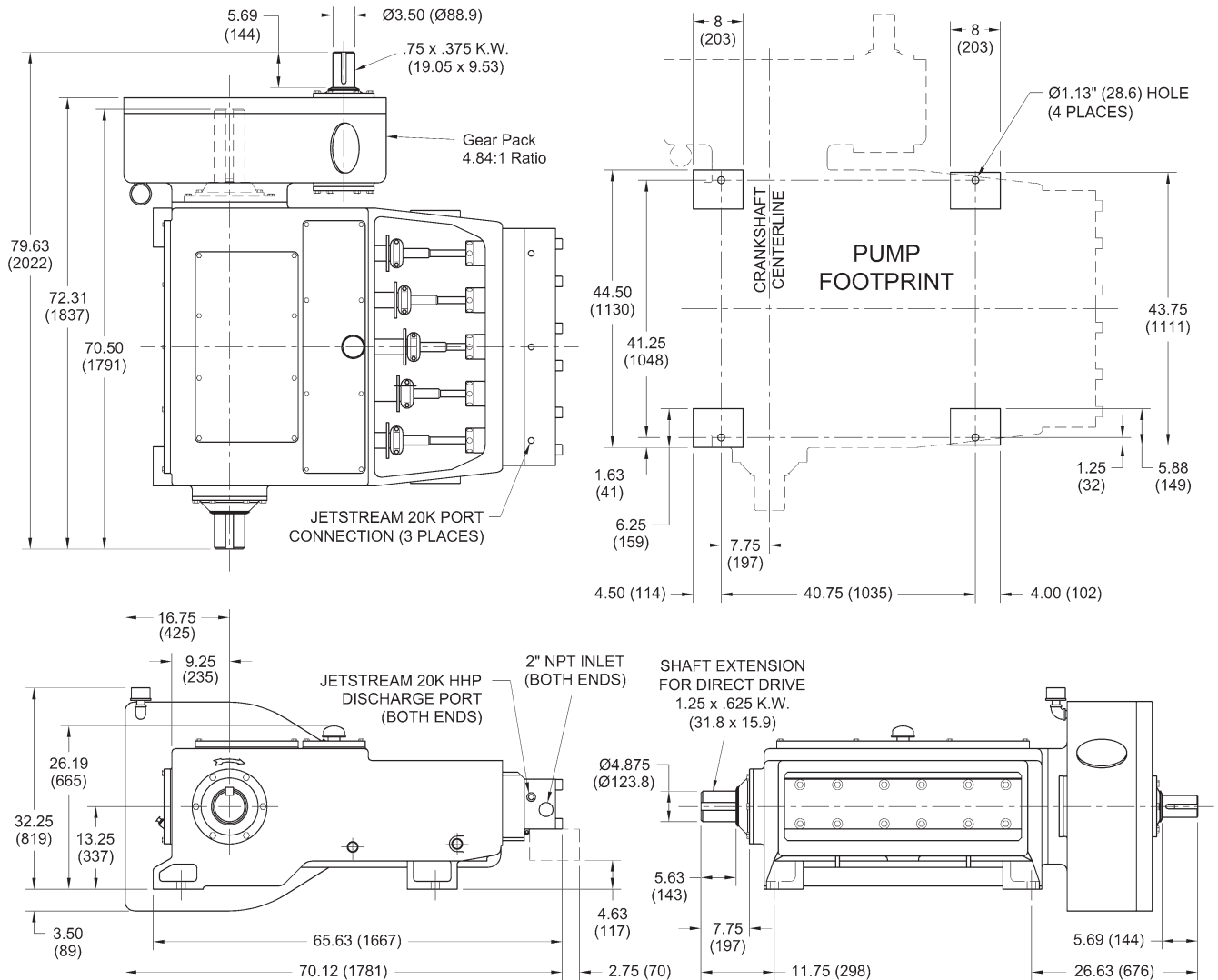
** See details on all connection types beginning on page I-2.

PUMPS & FLUID ENDS

20,000 PSI



UNx™ BARESHAFT PUMP MODEL 5020Q



Horsepower Chart

Common Engine Powers		Pump Displacement* at 20,000 psi (1,379 bar)	
hp	kW	gpm	lpm
500	373	39.6	150

* Displacement (flow) values represented refer to "theoretical" flow, neglecting inefficiency resulting from compressibility of water and expansion of pressure-bearing components.

Related Items

- 5020Q UNx™ FLUID ENDS** – See Pumps & Fluid Ends, Page B-14
- SEVERE SERVICE RELIEF VALVE** – See Safety, Page G-4
- BYPASS VALVE** – See Control Guns & Valves, Page C-11
- REGULATOR VALVE** – See Guns, Valves, & Filters, Page C-12
- FILTERS** – See Guns, Valves, & Filters, Page C-16
- FITTINGS & GAUGES** – See Fittings & Gauges, Section F

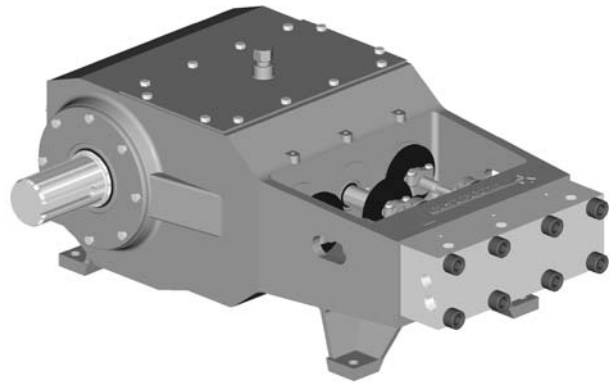
PUMPS & FLUID ENDS

20,000 PSI



UNx™ BARESHAFT PUMP MODEL 4220

The Jetstream model 4220 waterblast pump is capable of power input up to 325 horsepower and displacement of over twenty-one gallons per minute at 20,000 psi. It is the most advanced and efficient waterblast pump of its size in the industry. Combining the strength and durability of a proven power end workhorse with the unparalleled simplicity, serviceability, and versatility of the UNx™ fluid end design, Jetstream bareshaft pumps are the best choice for those building their own system or replacing a complicated, worn, or unreliable pump.



- Up to 325 horsepower
- Flow of over to 21 gallons per minute at 20,000 psi*
- Three Plunger (triplex) design

UNx™ Fluid End Features

- Superior performance
- Greater flexibility in the field
- Reduced downtime and maintenance
- See UNx™ Features and Benefits on page B-1

UNx™ Power End Features

- Ductile iron power frame is the strongest in the industry
- Heat treated billet alloy steel crankshaft
- Largest bearings of any comparable pump on the market

General Specifications

Max. Power Input	Plungers				Pump RPM		Max. Pump Displacement*		Maximum Frame Load		Max. Operating Pressure		Total Weight		Pump Oil		
	hp	kW	#	Stroke	Min.	Max.	gpm	lpm	lbs	N	psi	bar	lbs	kg	Type	Capacity	
			in	mm												gal	l
325	242	3	4.25	108	150	514	21.4	81.0	17,750	78,950	20,000	1,379	1,800	820	80W-90	9.0	34.0

Fluid End Specifications

Pump Part Number	Plunger Size		Connection Types**		Pump Displacement at Specified Pump Speeds*								Max. Operating Pressure		
	No.	Diameter			200 RPM		300 RPM		400 RPM		514 RPM				
		in	mm	gpm	lpm	gpm	lpm	gpm	lpm	gpm	lpm	psi	bar		
52120	#8	.800	20.32	20K Port Female	20K Port Female	4.6	21.0	8.3	31.5	11.1	42.0	14.3	54.0	20,000	1,379
52125	#9	.900	22.86			7.0	26.6	10.5	39.9	14.1	53.2	18.0	68.3	20,000	1,379
52507	#10	.980	24.89			8.3	31.5	12.5	47.3	16.7	63.1	21.4	81.0	20,000	1,379

* Displacement (flow) values represented refer to "theoretical" flow, neglecting inefficiency resulting from compressibility of water and expansion of pressure-bearing components.

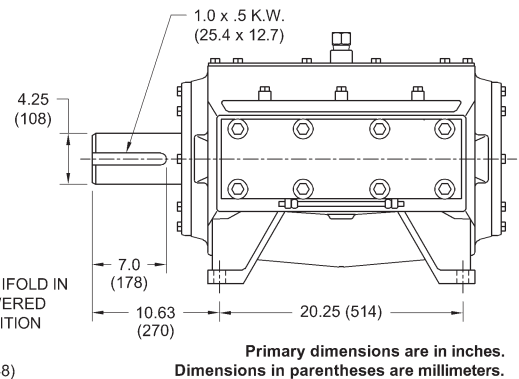
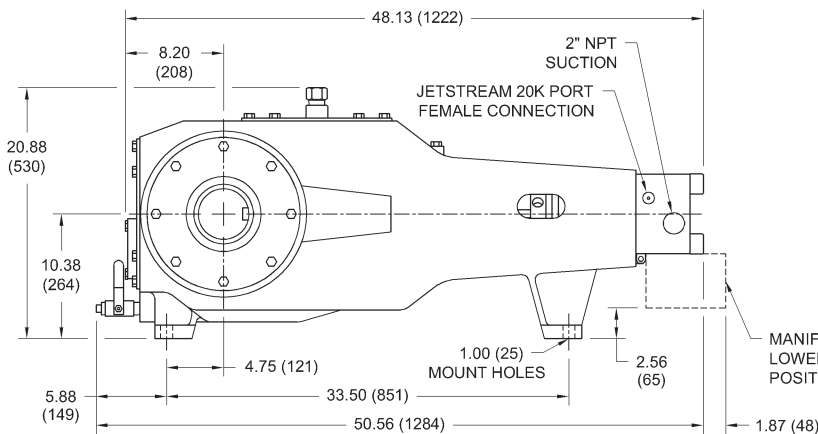
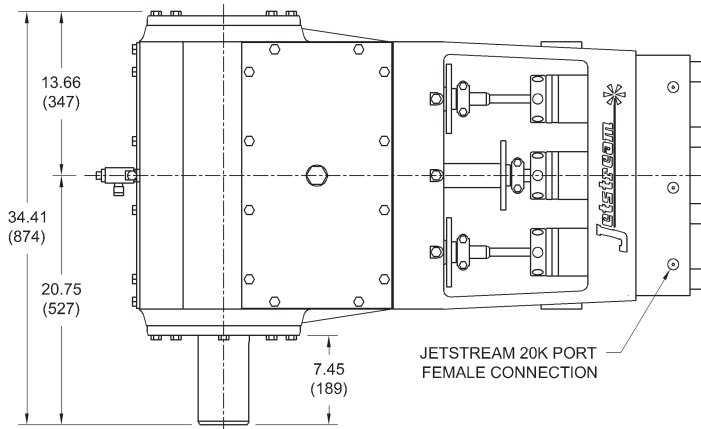
** See details on all connection types beginning on page I-2.

PUMPS & FLUID ENDS

20,000 PSI



UNx™ BARESHAFT PUMP MODEL 4220



Horsepower Chart

Common Engine Powers		Pump Displacement* at 20,000 psi (1,379 bar)	
hp	kW	gpm	lpm
200	149	15.5	58.7
215	160	16.7	63.1
250	186	19.4	73.3
260	194	20.2	76.3
300	224	23.3	88.0

* Displacement (flow) values represented refer to "theoretical" flow, neglecting inefficiency resulting from compressibility of water and expansion of pressure-bearing components.

Related Items

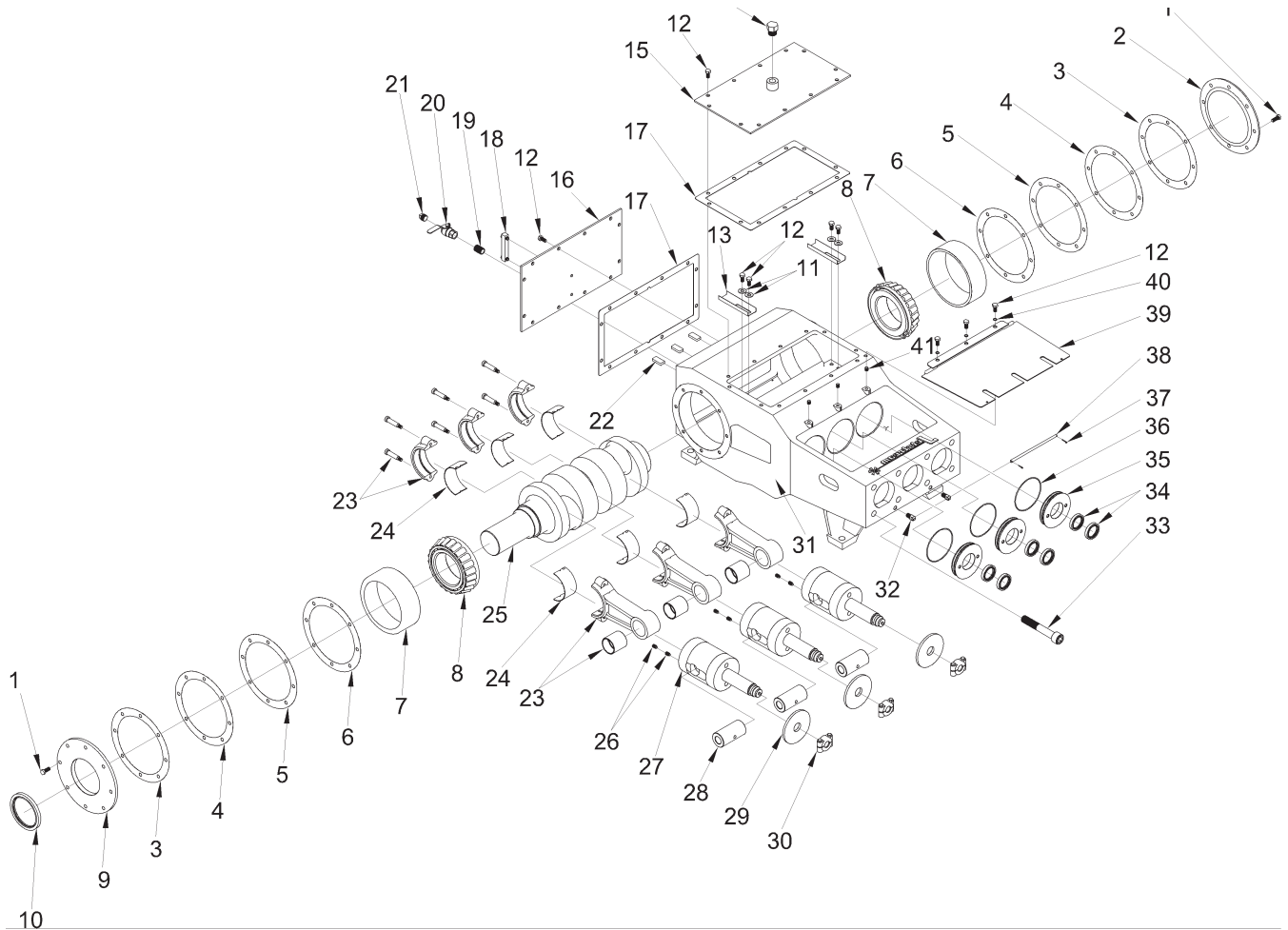
- 4220 UNx™ FLUID ENDS** – See Pumps & Fluid Ends, Page B-16
- SEVERE SERVICE RELIEF VALVE** – See Safety, Page G-4
- BYPASS VALVE** – See Control Guns & Valves, Page C-11
- REGULATOR VALVE** – See Guns, Valves, & Filters, Page C-12
- FILTERS** – See Guns, Valves, & Filters, Page C-16
- FITTINGS & GAUGES** – See Fittings & Gauges, Section F

PUMPS & FLUID ENDS

20,000 PSI



UNx™ BARESHAFT PUMP MODEL 4220 POWER END REPLACEMENT PARTS



Item	Part Number	Description
1	26491	Capscrew
2	51536	Frame Cap, Outboard
3	26259	Shim, 0.02" Thick
4	26259-1	Shim, 0.01" Thick
5	26259-2	Shim, 0.0075" Thick
6	26259-3	Shim, 0.005" Thick
7	26376	Bearing Race
8	26390	Bearing
9	51538	Frame Cap, Inboard
10	26208	Crankshaft Seal
11	26798	Washer
12	26361	Capscrew
13	26484	Oil Trough
14	26360	Breather Cap

Item	Part Number	Description
15	51279	Plate, Top Cover
16	51540	Plate, Back Cover
17	26195	Gasket, Cover Plate
18	28062	Gage, Oil Level
19	25946	Nipple
20	27101	Ball Valve
21	25928	Plug
22	26705	Magnet
23	51487	Connecting Rod
24	26051	Bearing, Journal
25	26389	Crankshaft
	28826	Crankshaft, High Strength
26	26369	Setscrew
27	51731	Crosshead

Item	Part Number	Description
28	51534	Pin, Crosshead
29	26487	Deflector
30	51736	Plunger coupling
31	51421	Power Frame
32	51659	Trunnion
33	26500	Capscrew
34	26481	Oil Seal
35	51713	Seal Plate
36	26479	O-Ring
37	26468	Cotter Pin
38	50295	Trunnion Rod
39	53632	Cover, Rod Box
40	26053	O-Ring
41	26482	Setscrew

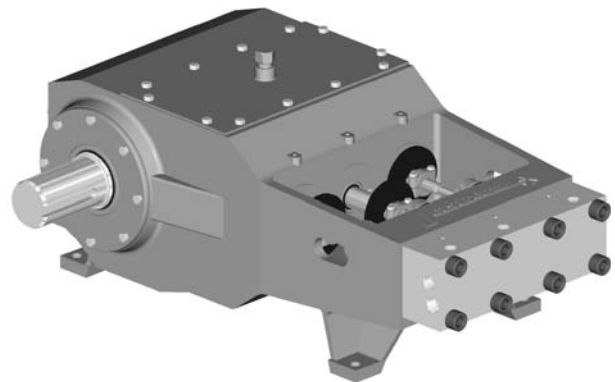
PUMPS & FLUID ENDS

20,000 PSI



UNx™ BARESHAFT PUMP MODEL 3620

The Jetstream model 3620 waterblast pump is capable of power input up to 200 horsepower and displacement of thirteen gallons per minute at 20,000 psi. It is the most advanced and efficient medium horsepower waterblast pump in the industry. Combining the strength and durability of a proven power end workhorse with the unparalleled simplicity, serviceability, and versatility of the UNx™ fluid end design, Jetstream bareshaft pumps are the best choice for those building their own system or replacing a complicated, worn, or unreliable pump.



- Up to 200 horsepower
- Flow up to 13 gallons per minute at 20,000 psi*
- Three Plunger (triplex) design

UNx™ Fluid End Features

- Superior performance
- Greater flexibility in the field
- Reduced downtime and maintenance
- See UNx™ Features and Benefits on page B-1

UNx™ Power End Features

- Ductile iron power frame is the strongest in the industry
- Largest bearings of any comparable pump on the market

General Specifications

Max. Power Input		Plungers			Pump RPM		Max. Pump Displacement*		Maximum Frame Load		Max. Operating Pressure		Total Weight		Pump Oil		
		#	Stroke												Type	Capacity	
hp	kW		in	mm	Min.	Max.	gpm	lpm	lbs	N	psi	bar	lbs	kg			gal
200	149	3	3.63	92.1	150	550	13.0	49.3	11,300	50,300	20,000	1,379	1,720	780	80W-90	9.0	34.0

Fluid End Specifications

Pump Part Number	Plunger Size		Connection Types**		Pump Displacement at Specified Pump Speeds*								Max. Operating Pressure		
	No.	Diameter			300 RPM		400 RPM		500 RPM		600 RPM				
		in	mm	gpm	lpm	gpm	lpm	gpm	lpm	gpm	lpm	psi	bar		
52585	#8	.800	20.32	20K Port Female	20K Port Female	7.1	26.9	9.5	35.8	11.8	44.8	13.0	49.3	20,000	1,379

* Displacement (flow) values represented refer to "theoretical" flow, neglecting inefficiency resulting from compressibility of water and expansion of pressure-bearing components.

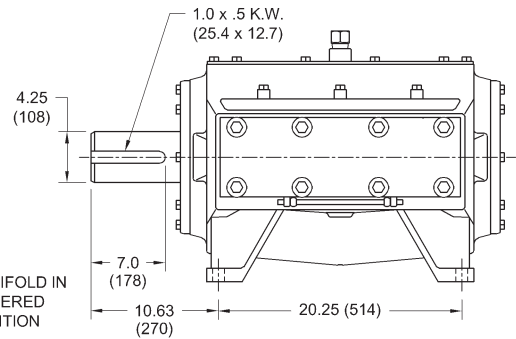
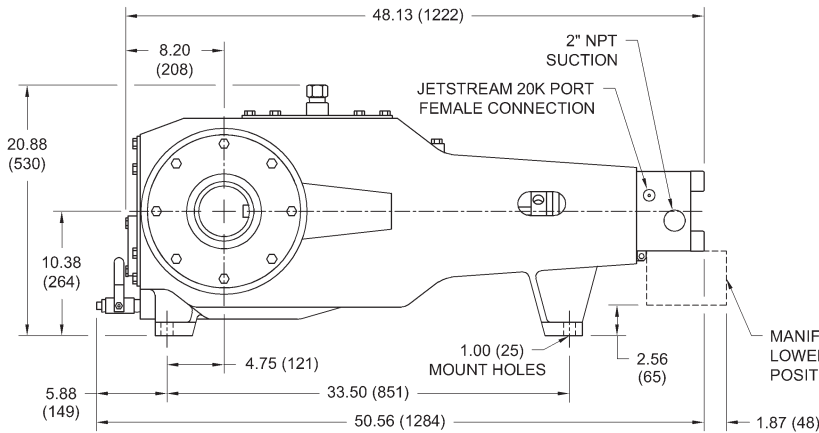
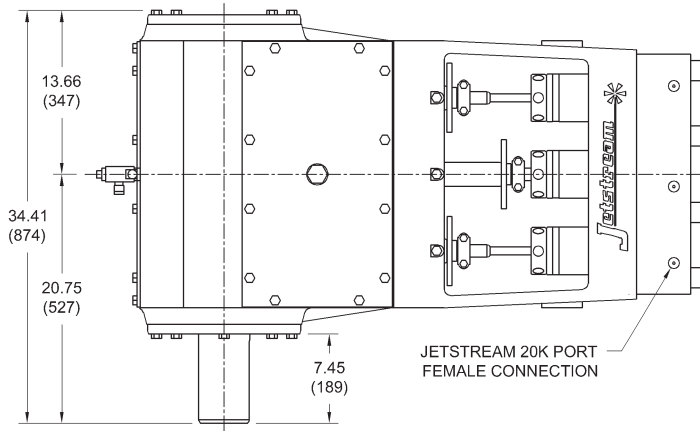
** See details on all connection types beginning on page I-2.

PUMPS & FLUID ENDS

20,000 PSI



UNx™ BARESHAFT PUMP MODEL 3620



Primary dimensions are in inches.
Dimensions in parentheses are millimeters.

Horsepower Chart

Common Engine Powers		Pump Displacement* at 20,000 psi (1,379 bar)	
hp	kW	gpm	lpm
152	113	11.8	44.6
174	130	13.5	51.0
200	149	15.5	58.7

* Displacement (flow) values represented refer to "theoretical" flow, neglecting inefficiency resulting from compressibility of water and expansion of pressure-bearing components.

Related Items

3620 UNx™ FLUID ENDS – See Pumps & Fluid Ends, Page B-16

SEVERE SERVICE RELIEF VALVE – See Safety, Page G-4

BYPASS VALVE – See Control Guns & Valves, Page C-11

REGULATOR VALVE – See Guns, Valves, & Filters, C-12

FILTERS – See Guns, Valves, & Filters, Page C-16

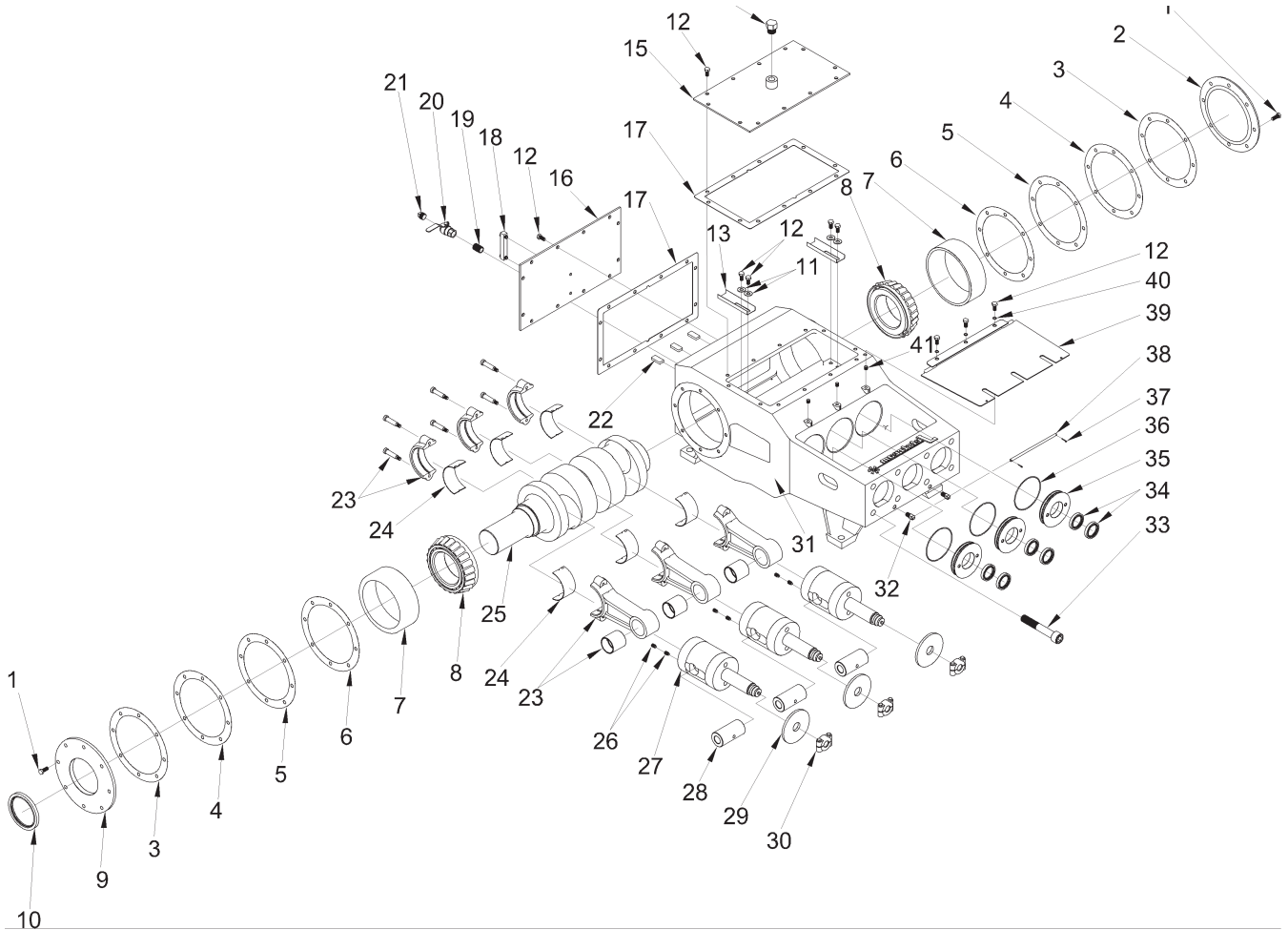
FITTINGS & GAUGES – See Fittings & Gauges, Section F

PUMPS & FLUID ENDS

20,000 PSI



UNx™ BARESHAFT PUMP MODEL 3620 POWER END REPLACEMENT PARTS



Item	Part Number	Description
1	26491	Capscrew
2	51536	Frame Cap, Outboard
3	26259	Shim, 0.02" Thick
4	26259-1	Shim, 0.01" Thick
5	26259-2	Shim, 0.0075" Thick
6	26259-3	Shim, 0.005" Thick
7	26376	Bearing Race
8	26390	Bearing
9	51538	Frame Cap, Inboard
10	26208	Crankshaft Seal
11	26798	Washer
12	26361	Capscrew
13	26484	Oil Trough
14	26360	Breather Cap

Item	Part Number	Description
15	51279	Plate, Top Cover
16	51540	Plate, Back Cover
17	26195	Gasket, Cover Plate
18	28062	Gage, Oil Level
19	25946	Nipple
20	27101	Ball Valve
21	25928	Plug
22	26705	Magnet
23	51487	Connecting Rod
24	26051	Bearing, Journal
25	53600	Crankshaft
26	26369	Setscrew
27	51731	Crosshead
28	51534	Pin, Crosshead

Item	Part Number	Description
29	26487	Deflector
30	51736	Plunger coupling
31	51421	Power Frame
32	51659	Trunnion
33	26500	Capscrew
34	26481	Oil Seal
35	51713	Seal Plate
36	26479	O-Ring
37	26468	Cotter Pin
38	50295	Trunnion Rod
39	53632	Cover, Rod Box
40	26053	O-Ring
41	26482	Setscrew

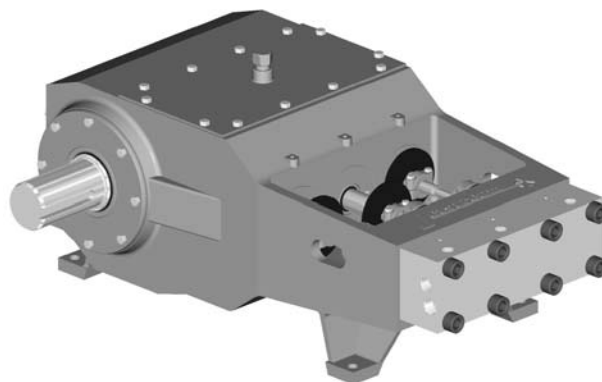
PUMPS & FLUID ENDS

20,000 PSI



UNx™ BARESHAFT PUMP MODEL 3020

The Jetstream model 3020 waterblast pump is capable of power input up to 150 horsepower and displacement of nine gallons per minute at 20,000 psi. It is the most advanced and efficient compact waterblast pump in the industry. Combining the strength and durability of a proven power end workhorse with the unparalleled simplicity, serviceability, and versatility of the UNx™ fluid end design, Jetstream bareshaft pumps are the best choice for those building their own system or replacing a complicated, worn, or unreliable pump.



- Up to 150 horsepower
- Flow up to 9 gallons per minute at 20,000 psi*
- Three Plunger (triplex) design

UNx™ Fluid End Features

- Superior performance
- Greater flexibility in the field
- Reduced downtime and maintenance
- **See UNx™ Features and Benefits on page B-1**

UNx™ Power End Features

- Ductile iron power frame is the strongest in the industry
- Largest bearings of any comparable pump on the market

General Specifications

Max. Power Input		Plungers			Pump RPM		Max. Pump Displacement*		Maximum Frame Load		Max. Operating Pressure		Total Weight		Pump Oil		
		#	Stroke												Type	Capacity	
hp	kW		in	mm	Min.	Max.	gpm	lpm	lbs	N	psi	bar	lbs	kg		gal	l
150	112	3	3.00	76.2	150	600	9.0	34.1	9,500	40,260	20,000	1,379	970	440	80W-90	5.0	19.0

Fluid End Specifications

Pump Part Number	Plunger Size			Connection Types**		Pump Displacement at Specified Pump Speeds*								Max. Operating Pressure	
	No.	Diameter				300 RPM		400 RPM		500 RPM		600 RPM			
		in	mm	Top Ports	Discharge Ports	gpm	lpm	gpm	lpm	gpm	lpm	gpm	lpm	psi	bar
52110	#6	.635	16.13	20K Port Female	20K Port Female	3.7	14.0	4.9	18.7	6.2	23.4	7.4	28.0	20,000	1,379
52115	#7	.700	17.78			4.5	17.0	6.0	22.7	7.5	28.4	9.0	34.1	20,000	1,379

* Displacement (flow) values represented refer to "theoretical" flow, neglecting inefficiency resulting from compressibility of water and expansion of pressure-bearing components.

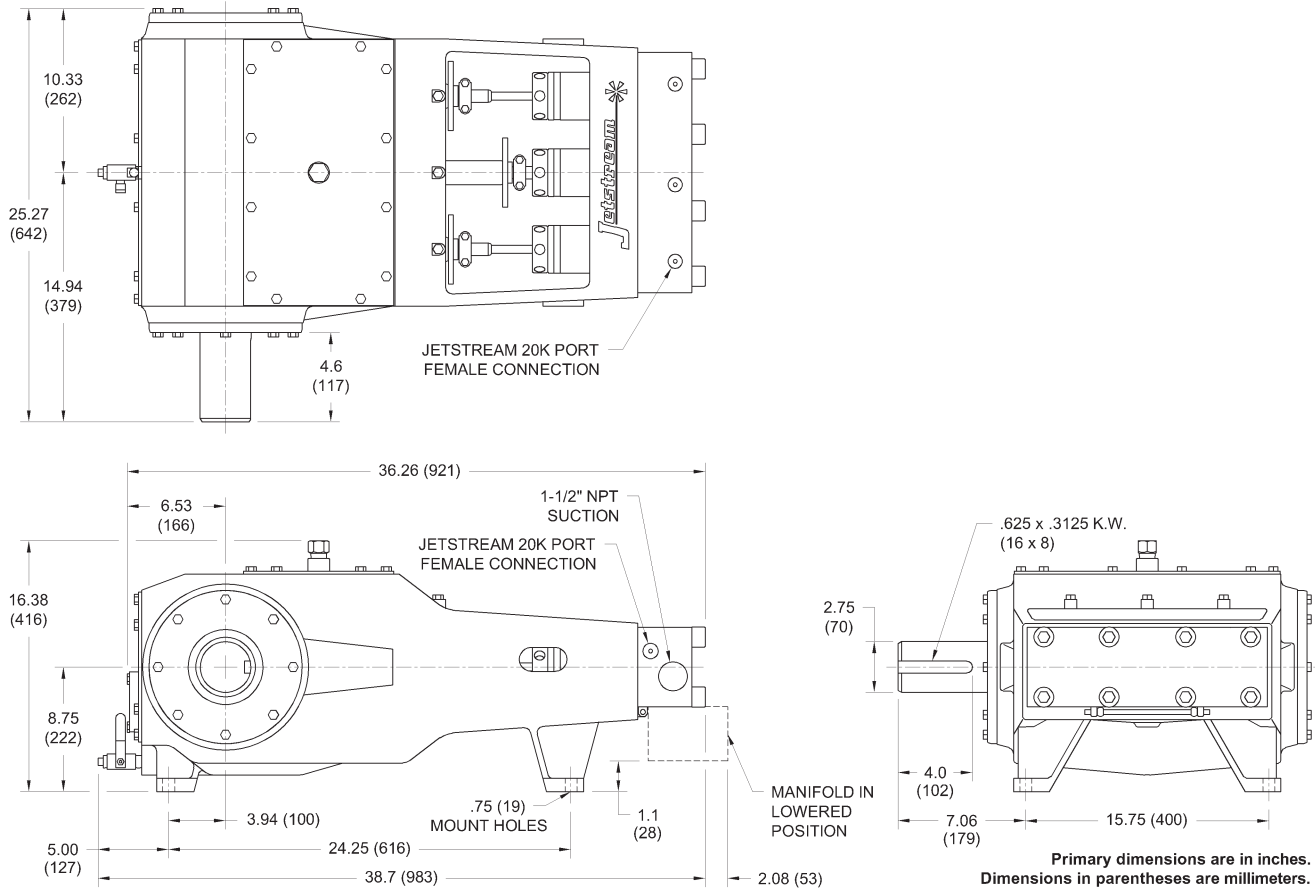
** See details on all connection types beginning on page I-2.

PUMPS & FLUID ENDS

20,000 PSI



UNx™ BARESHAFT PUMP MODEL 3020



Horsepower Chart

Common Engine Powers		Pump Displacement* at 20,000 psi (1,379 bar)	
hp	kW	gpm	lpm
60	45	4.7	17.6
75	56	5.8	22.0
100	75	7.8	29.3
110	82	8.5	32.3
125	93	9.7	36.7
150	112	11.6	44.0

* Displacement (flow) values represented refer to "theoretical" flow, neglecting inefficiency resulting from compressibility of water and expansion of pressure-bearing components.

Related Items

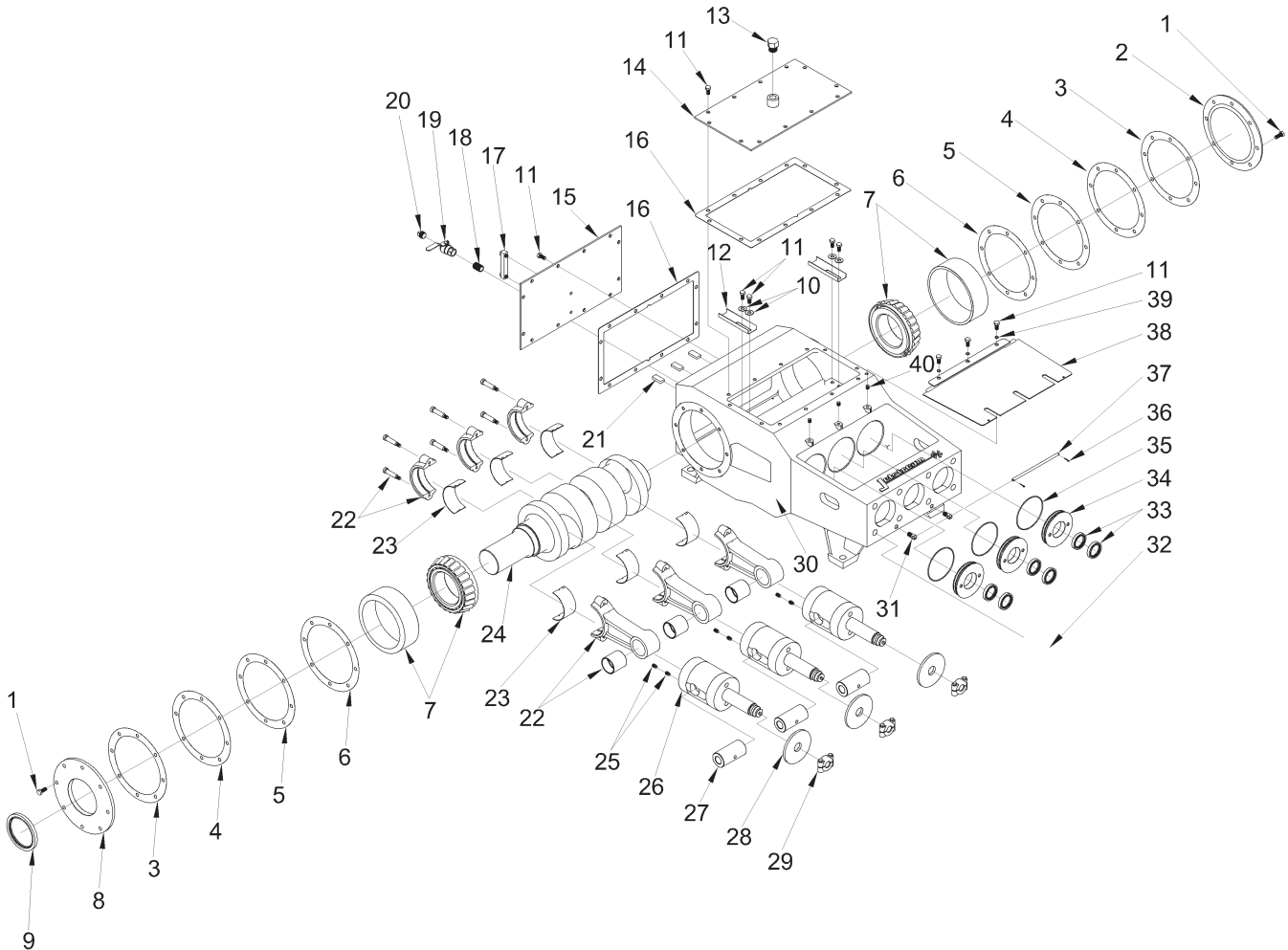
- 3020 UNx™ FLUID ENDS** – See Pumps & Fluid Ends, Page B-18
- SEVERE SERVICE RELIEF VALVE** – See Safety, Page G-4
- BYPASS VALVE** – See Control Guns & Valves, Page C-11
- REGULATOR VALVE** – See Guns, Valves, & Filters, Page C-12
- FILTERS** – See Guns, Valves, & Filters, Page C-16
- FITTINGS & GAUGES** – See Fittings & Gauges, Section F

PUMPS & FLUID ENDS

20,000 PSI



UNx™ BARESHAFT PUMP MODEL 3020 POWER END REPLACEMENT PARTS



Item	Part Number	Description
1	26491	Capscrew
2	51733	Frame Cap, Outboard
3	26495	Shim, 0.02" Thick
4	26495-1	Shim, 0.01" Thick
5	26495-2	Shim, 0.0075" Thick
6	26495-3	Shim, 0.005" Thick
7	25541	Bearing & Race
8	51732	Frame Cap, Inboard
9	25428	Crankshaft Seal
10	25251	Washer
11	26492	Capscrew
12	26484	Oil Trough
13	26360	Breather Cap
14	50807	Plate, Top Cover

Item	Part Number	Description
15	51752	Plate, Back Cover
16	26496	Gasket, Cover Plate
17	28062	Gage, Oil Level
18	25946	Nipple
19	27101	Ball Valve
20	25928	Plug
21	26705	Magnet
22	51749	Connecting Rod
23	26486	Bearing, Journal
24	25508	Crankshaft
25	25132	Setscrew
26	51738	Crosshead
27	52077	Pin, Crosshead

Item	Part Number	Description
28	26623	Deflector
29	51737	Plunger coupling
30	51748	Power Frame
31	51659	Trunnion
32	26462	Capscrew
33	25536	Oil Seal
34	51712	Seal Plate
35	26478	O-Ring
36	26468	Cotter Pin
37	51666	Trunnion Rod
38	53681	Cover, Rod Box
39	25333	O-Ring
40	26483	Setscrew

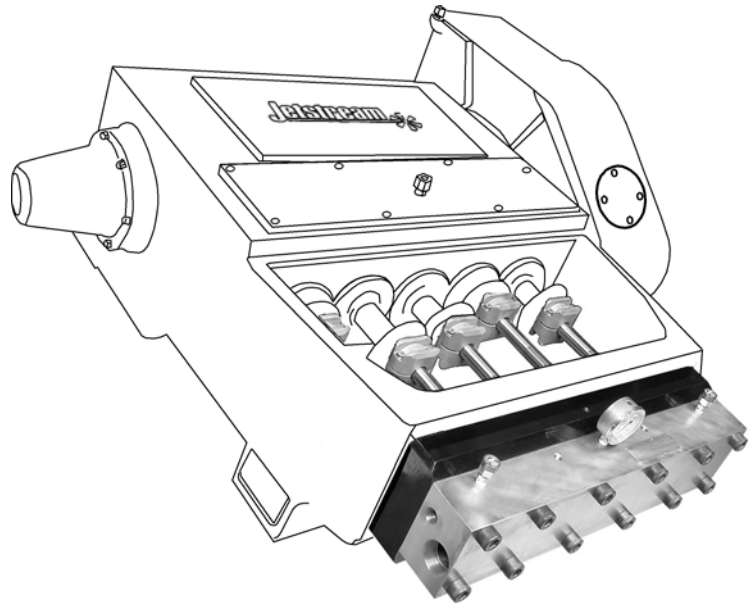
PUMPS & FLUID ENDS

20,000 PSI



UNx™ FLUID END MODEL 5020Q

The 20,000 psi UNx™ Fluid End is a cost-effective solution to increase the available operating pressure or range of pressures of an existing Jetstream 5200Q UNx Pump. The model 5220Q delivers all of the benefits that define the UNx™ Fluid Ends as the best in the industry.



- 500 horsepower
- Flow of over 39 gallons per minute at 20,000 psi*
- Five plunger (quintuplex) design
- Superior performance
- Greater flexibility in the field
- Reduced downtime and maintenance
- **See UNx™ Features and Benefits on page B-1**
- Includes hose adapters and one rupture disc holder.
- Choose an additional rupture disc holder or a Severe Service Relief Valve as a second safety device.
- Pressure gauge not included

Fluid End Specs

Fluid End Part Number	Connection Types**		Plunger Size		Plunger Stroke		Max. RPM	Maximum Flow*		Max. Operating Pressure		
			No.	Diameter								
	Top Ports	Discharge Ports			in	mm		in	mm	gpm	lpm	psi
54825	20K Port Female	20K HHP Port Female	#11	1.062	26.97	5.00	127	413	39.6	150	20,000	1,379

* Displacement (flow) values represented refer to "theoretical" flow, neglecting inefficiency resulting from compressibility of water and expansion of pressure-bearing components.

** See details on all connection types beginning on page I-2.

Horsepower Chart

Common Engine Powers		Pump Displacement* at 20,000 psi (1,379 bar)	
hp	kW	gpm	lpm
500	373	39.6	150

Related Items

SEVERE SERVICE RELIEF VALVE – See Safety, Page G-4

BYPASS VALVE – See Control Guns & Valves, Page C-11

REGULATOR VALVE – See Guns, Valves, & Filters, Page C-12

FILTERS – See Guns, Valves, & Filters, Page C-16

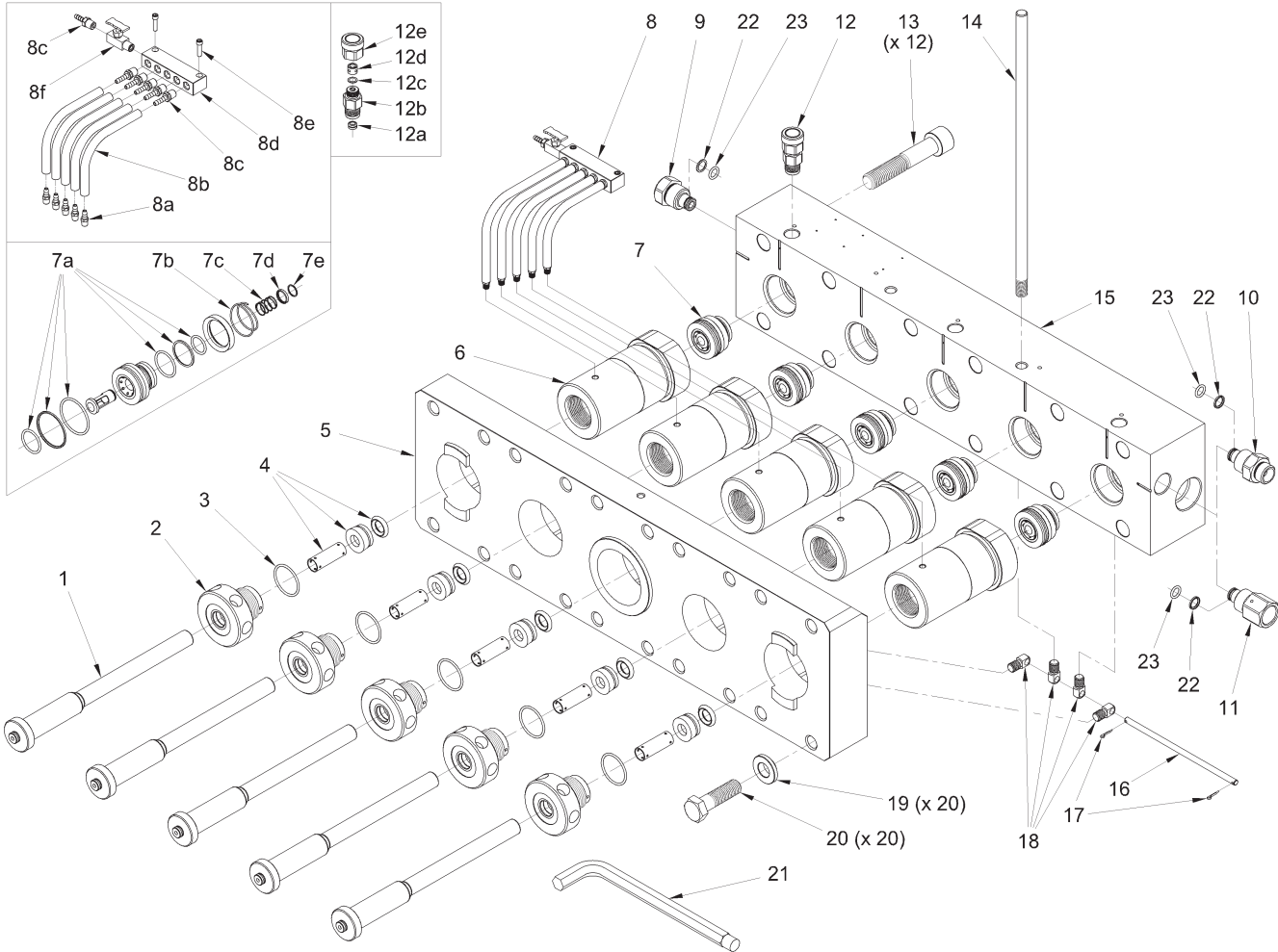
FITTINGS & GAUGES – See Fittings & Gauges, Section F

PUMPS & FLUID ENDS

20,000 PSI



UNx™ FLUID END MODEL 5020Q REPLACEMENT PARTS



Item	Part Number	Description	Item	Part Number	Description	Item	Part Number	Description
1	54827	#11 Plunger	8c	26899	Hose Fitting, 1/4" NPT	12d	51773	Hold Down Ring
2	54828	#11 Gland Nut	8d	52494	Lube Manifold	12e	51772	Cap
3	26416	O-Ring	8e	26689	Capscrew	13	26500	Manifold Bolt
4	54856	#11 Packing Set	8f	26876	Needle Valve	14	52114	Lifting Rod
5	54627	Adapter Plate	9	54847	Plug, 20K HHP Port Male	15	54824	Manifold
6	54826	#11 Stuffing Box	10	54844	Adapter, 20K HHP Port Male x 1- 5/16" Type "M" Male	16	50295	Trunnion Rod
7	51790	Uni-Valve	11	54846	Adapter, 20K HHP Port Male x 1" MP Female	17	26468	Cotter Pin
7a	50465	Uni-Valve Seal Kit	12	52035	Rupture Disc Holder	18	51659	Trunnion
7b	26550	Discharge Valve Spring	12a	52040	20K Seal	19	54638	Washer
7c	26549	Suction Valve Spring	12b	52043	Base	20	28900	Adapter Plate Bolt
7d	51814	Spring Retainer	12c	51838	Disc, 24,000 psi Burst Pressure	21	50889	Pump Wrench
7e	26546	Retaining Ring		51837	Disc, 27,000 psi Burst Pressure	22	54854	Backup Ring, HHP Port Fitting
8	54690	Lube Harness Ay		51836	Disc, 29,000 psi Burst Pressure	23	26523	O-Ring, HHP Port Fitting
8a	26874	Hose Fitting, 1/8" NPT						
8b	26469	Hose (Order in feet)						

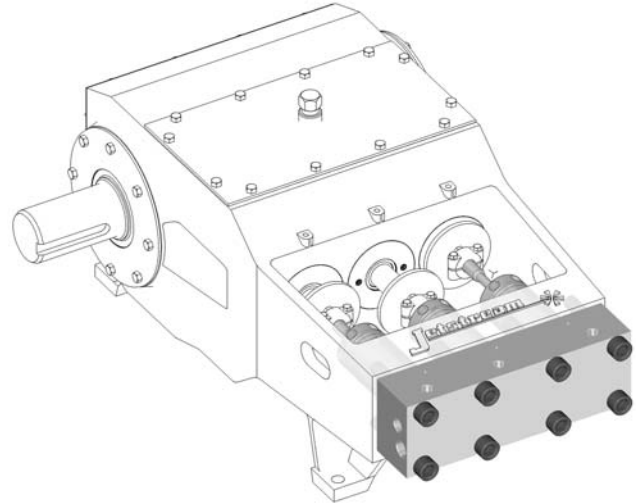
PUMPS & FLUID ENDS

20,000 PSI



UNx™ FLUID END MODELS 4220 & 3620

The 20,000 psi UNx™ Fluid End is a cost-effective solution to increase the available operating pressure or range of pressures of an existing Jetstream 3600 or 4200 UNx Pump. The model 4220 and model 3620 deliver all of the benefits that define the UNx™ Fluid Ends as the best in the industry.



- Up to 325 horsepower
- Flow of over 21 gallons per minute at 20,000 psi*
- Three plunger (triplex) design
- Superior performance
- Greater flexibility in the field
- Reduced downtime and maintenance
- **See UNx™ Features and Benefits on page B-1**
- Includes hose adapters and one rupture disc holder.
- Choose an additional rupture disc holder or a Severe Service Relief Valve as a second safety device.
- Pressure gauge not included

3620 Fluid End

Fluid End Part Number	Connection Types**		Plunger Size		Plunger Stroke		Max. RPM	Maximum Flow*		Max. Operating Pressure		
			No.	Diameter								
	Top Ports	Discharge Ports			in	mm		in	mm	gpm	lpm	psi
51995	20K Port Female	20K Port Female	#8	.800	20.32	3.63	92	550	13.0	49.3	20,000	1,379

4220 Fluid End

Fluid End Part Number	Connection Types**		Plunger Size		Plunger Stroke		Max. RPM	Maximum Flow*		Max. Operating Pressure		
			No.	Diameter								
	Top Ports	Discharge Ports			in	mm		in	mm	gpm	lpm	psi
51995	20K Port Female	20K Port Female	#8	.800	20.32	4.25	108	514	14.3	54.0	20,000	1,379
52000	20K Port Female	20K Port Female	#9	.900	22.86	4.25	108	514	18.0	68.3	20,000	1,379
52506	20K Port Female	20K Port Female	#10	.980	24.89	4.25	108	514	21.4	81.0	20,000	1,379

* Displacement (flow) values represented refer to "theoretical" flow, neglecting inefficiency resulting from compressibility of water and expansion of pressure-bearing components.

** See details on all connection types beginning on page I-2.

Horsepower Chart

Common Engine Powers		Pump Displacement* at 20,000 psi (1,379 bar)	
hp	kW	gpm	lpm
152	113	11.8	44.6
174	130	13.5	51.0
200	149	15.5	58.7
215	160	16.7	63.1
250	186	19.4	73.3
260	194	20.2	76.3
300	224	23.3	88.0

Related Items

SEVERE SERVICE RELIEF VALVE – See Safety, Page G-4

BYPASS VALVE – See Control Guns & Valves, Page C-11

REGULATOR VALVE – See Guns, Valves, & Filters, Page C-12

FILTERS – See Guns, Valves, & Filters, Page C-16

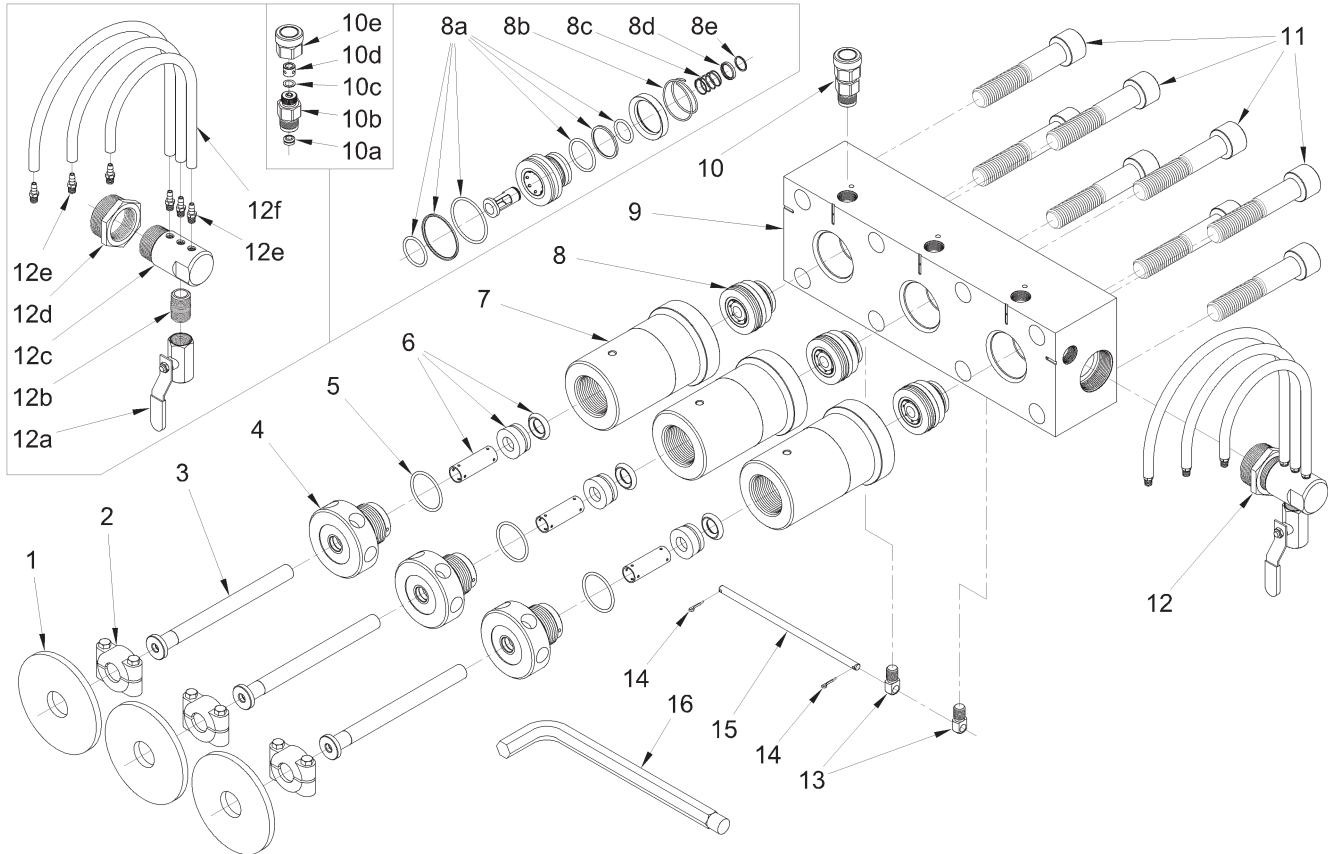
FITTINGS & GAUGES – See Fittings & Gauges, Section F

PUMPS & FLUID ENDS

20,000 PSI



UNx™ FLUID END MODEL 4220 & 3620 REPLACEMENT PARTS



Item	Part Number	Description
1	26487	Deflector
2	51736	Plunger Coupling
3	50301	#8 Plunger
	51828	#9 Plunger
	52504	#10 Plunger
4	51832	#8 Gland Nut
	51829	#9 Gland Nut
	52501	#10 Gland Nut
	26416	O-Ring
6	51857	#8 Packing Set
	51826	#9 Packing Set
	52509	#10 Packing Set
7	50306	#8, #9 Stuffing Box
	52502	#10 Stuffing Box

Item	Part Number	Description
8	51790	Uni-Valve
8a	50465	Uni-Valve Seal Kit
8b	26550	Discharge Valve Spring
8c	26549	Suction Valve Spring
8d	51814	Spring Retainer
8e	26546	Retaining Ring
9	51818	Manifold
10	52035	Rupture Disc Holder
10a	52040	Seal
10b	52043	Base
10c	51838	Disc, 24,000 psi Burst
	51837	Disc, 27,000 psi Burst
	51836	Disc, 29,000 psi Burst

Item	Part Number	Description
10d	51773	Hold-Down Ring
10e	51772	Cap
11	26500	Manifold Bolt
12	51975	Lube Harness
12a	27101	Ball Valve
12b	25946	Nipple
12c	53242	Lube Manifold
12d	26802	Reducing Bushing
12e	26874	Hose Fitting
12f	26469	Hose
13	51659	Trunnion
14	26468	Cotter Pin
15	50295	Trunnion Rod
16	50889	Pump Wrench

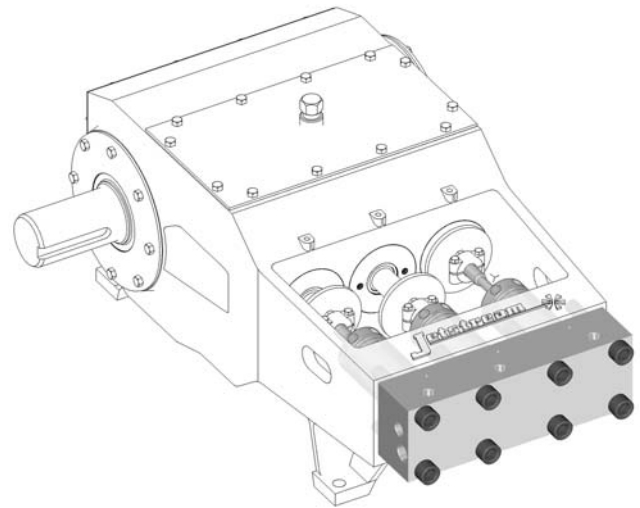
PUMPS & FLUID ENDS

20,000 PSI



UNx™ FLUID END MODEL 3020

The 20,000 psi UNx™ Fluid End is a cost-effective solution to increase the available operating pressure or range of pressures of an existing Jetstream 3000 UNx Pump. The model 3020 delivers all of the benefits that define the UNx™ Fluid Ends as the best in the industry.



- Up to 150 horsepower
- Flow up to 9.0 gallons per minute at 20,000 psi*
- Three plunger (triplex) design
- Superior performance
- Greater flexibility in the field
- Reduced downtime and maintenance
- **See UNx™ Features and Benefits on page B-1**
- Includes hose adapters and one rupture disc holder.
- Choose an additional rupture disc holder or a Severe Service Relief Valve as a second safety device.
- Pressure gauge not included

Fluid End Specs

Fluid End Part Number	Connection Types**		Plunger Size		Plunger Stroke		Max. RPM	Maximum Flow*		Max. Operating Pressure		
			No.	Diameter								
	Top Ports	Discharge Ports			in	mm		in	mm	gpm	lpm	psi
52075	20K Port Female	20K Port Female	#6	.635	16.13	3.00	76.2	600	7.4	28.0	20,000	1,379
52080	20K Port Female	20K Port Female	#7	.700	17.78	3.00	76.2	600	9.0	34.1	20,000	1,379

* Displacement (flow) values represented refer to "theoretical" flow, neglecting inefficiency resulting from compressibility of water and expansion of pressure bearing components.

** See details on all connection types beginning on page I-2.

Horsepower Chart

Common Engine Powers		Pump Displacement* at 20,000 psi (1,379 bar)	
hp	kW	gpm	lpm
60	45	4.7	17.6
75	56	5.8	22.0
100	75	7.8	29.3
110	82	8.5	32.3
125	93	9.7	36.7
150	112	11.6	44.0

Related Items

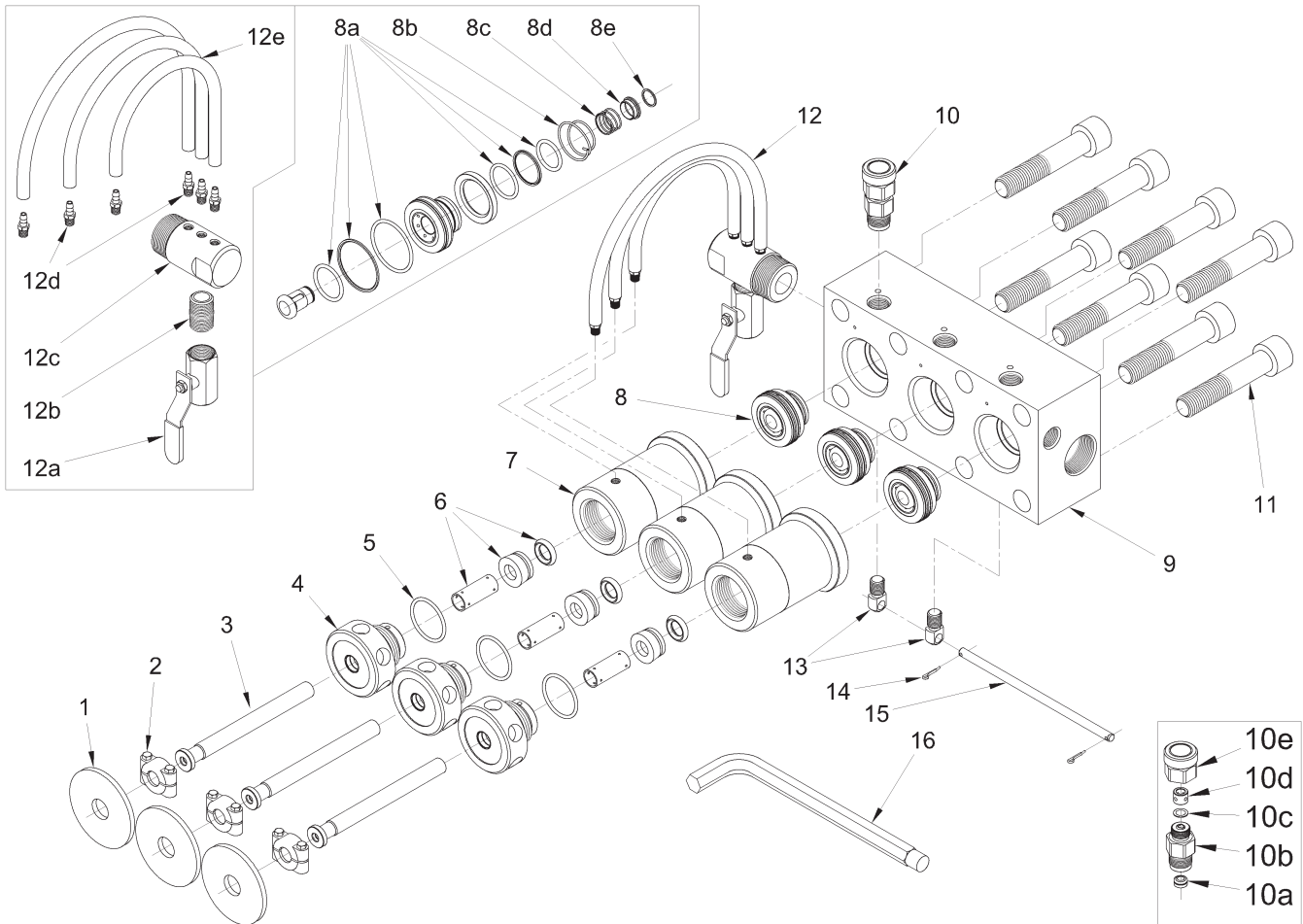
- SEVERE SERVICE RELIEF VALVE** – See Safety, Page G-4
- BYPASS VALVE** – See Control Guns & Valves, Page C-11
- REGULATOR VALVE** – See Guns, Valves, & Filters, Page C-12
- FILTERS** – See Guns, Valves, & Filters, Page C-16
- FITTINGS & GAUGES** – See Fittings & Gauges, Section F

PUMPS & FLUID ENDS

20,000 PSI



UNx™ FLUID END MODEL 3020 REPLACEMENT PARTS



Item	Part Number	Description
1	26623	Deflector
2	51737	Plunger Coupling
3	51849	#6 Plunger
	51739	#7 Plunger
4	51761	#6 Gland Nut
	51851	#7 Gland Nut
5	25165	O-Ring
6	51786	#6 Packing Set
	51787	#7 Packing Set
7	51431	#6, #7 Stuffing Box
8	51780	Uni-Valve
8a	51968	Uni-Valve Seal Kit

Item	Part Number	Description
8b	25908	Discharge Valve Spring
8c	26145	Suction Valve Spring
8d	51758	Spring Retainer
8e	26501	Retaining Ring
9	51558	Manifold
10	52035	Rupture Disc Holder
10a	52040	Seal
10b	52043	Base
10c	51838	Disc, 24,000 psi Burst
	51837	Disc, 27,000 psi Burst
	51836	Disc, 29,000 psi Burst
10d	51773	Hold-Down Ring

Item	Part Number	Description
10e	51772	Cap
11	26462	Manifold Bolt
12	51970	Lube Harness
12a	27101	Ball Valve
12b	25946	Nipple
12c	53242	Lube Manifold
12d	26874	Hose Fitting
12e	26469	Hose
13	51659	Trunnion
14	26468	Cotter Pin
15	51666	Trunnion Rod
16	50064	Pump Wrench

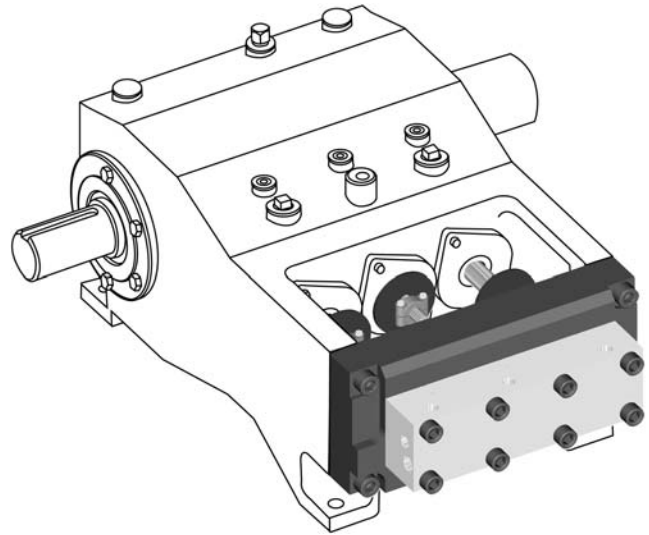
PUMPS & FLUID ENDS

20,000 PSI



UNx™ FLUID END UPGRADE BUTTERWORTH L-450 PUMPS GARDNER-DENVER TF-450 PUMPS

The Jetstream UNx™ Fluid End Upgrade is ideal for replacing a damaged, costly, or unreliable fluid end. It is also a cost-effective solution to increase available operating pressure or range of pressures for those who have already converted to the UNx™. The upgrade delivers all of the benefits of the UNx™ Fluid End design.



- Flow up to 22 gallons per minute at 20,000 psi*
- Superior performance
- Greater flexibility in the field
- Reduced downtime and maintenance
- **See UNx™ Features and Benefits on page B-1.**
- Includes hose adapters and one rupture disc holder.
- Choose an additional rupture disc holder or a Severe Service Relief Valve as a second safety device.
- Pressure gauge not included
- Bolt-on installation to an existing Butterworth L-450 or Gardner-Denver TF-450 power end requires only minutes.

Fluid End Specifications

Fluid End Part Number	Plunger Size		Connection Types**		Pump Displacement at Specified Pump Speeds*								Max. Operating Pressure		
	No.	Diameter			200 RPM		300 RPM		400 RPM		500 RPM				
		in	mm	Top Ports	Discharge Ports	gpm	lpm	gpm	lpm	gpm	lpm	gpm	lpm	psi	bar
52090	#8	.800	20.32	20K Port Female	20K Port Female	5.9	22.2	8.8	33.4	11.8	44.5	14.7	55.6	20,000	1,379
54780	#9	.900	22.86			7.4	28.2	11.2	42.2	14.9	56.3	18.6	70.4	20,000	1,379
53660	#10	.980	24.89			8.8	33.4	13.2	50.1	17.6	66.8	22.1	83.5	20,000	1,379

* Displacement (flow) values represented refer to "theoretical" flow, neglecting inefficiency resulting from compressibility of water and expansion of pressure-bearing components.

** See details on all connection types beginning on page I-2.

Horsepower Chart

Common Engine Powers		Pump Displacement* at 20,000 psi (1,379 bar)	
hp	kW	gpm	lpm
200	149	15.5	58.7
215	160	16.7	63.1
250	186	19.4	73.3
260	194	20.2	76.3
300	224	23.3	88.0

Related Items

SEVERE SERVICE RELIEF VALVE – See Safety, Page G-4

BYPASS VALVE – See Control Guns & Valves, Page C-11

REGULATOR VALVE – See Guns, Valves, & Filters, Page C-12

FILTERS – See Guns, Valves, & Filters, Page C-16

FITTINGS & GAUGES – See Fittings & Gauges, Section F

PUMPS & FLUID ENDS

20,000 PSI

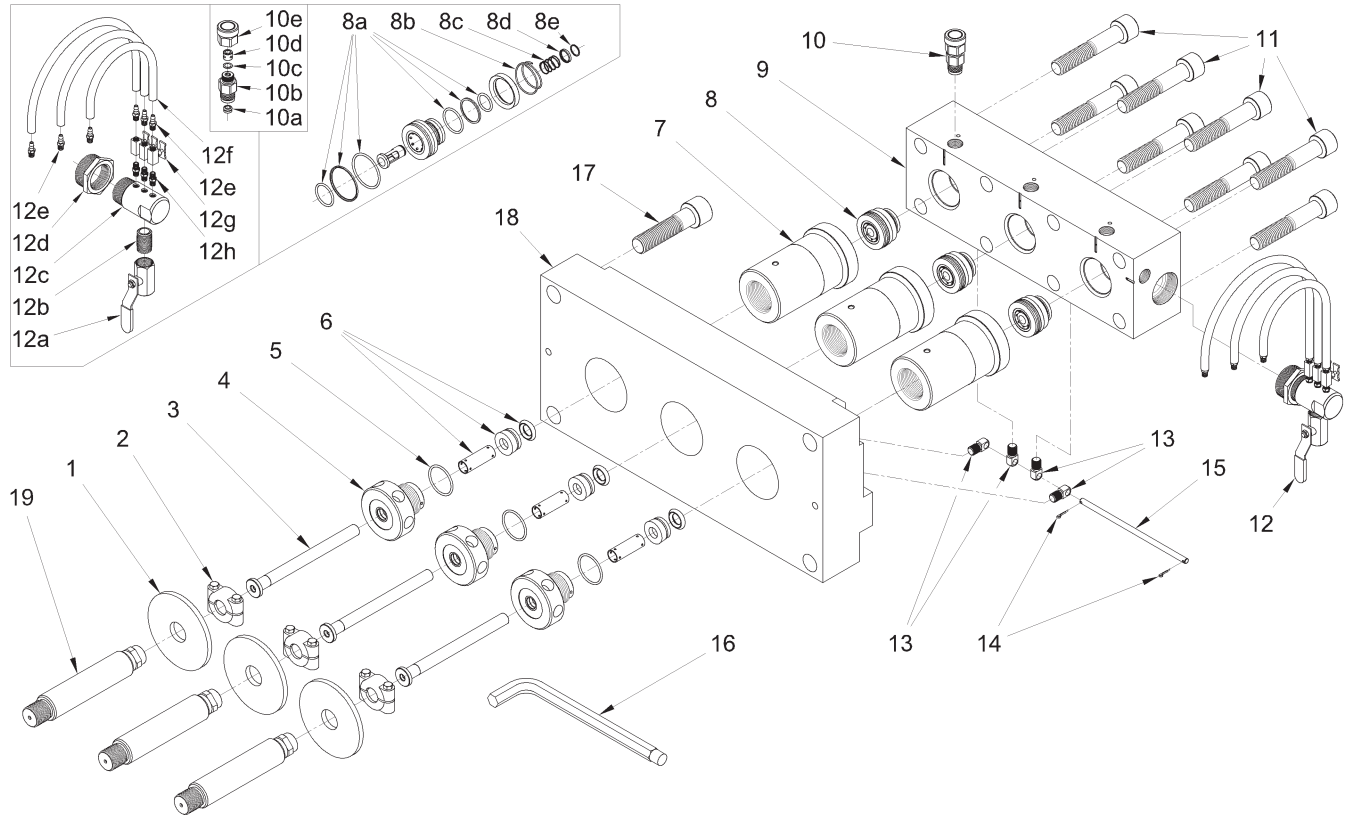


UNx™ FLUID END UPGRADE

BUTTERWORTH L-450 PUMPS

GARDNER-DENVER TF-450 PUMPS

REPLACEMENT PARTS



Item	Part Number	Description
1	26487	Deflector
2	51736	Plunger Coupling
3	50301	#8 Plunger
	51828	#9 Plunger
	52504	#10 Plunger
4	51832	#8 Gland Nut
	51829	#9 Gland Nut
	52501	#10 Gland Nut
5	26416	O-Ring
6	51857	#8 Packing Set
	51826	#9 Packing Set
	52509	#10 Packing Set
7	51991	#8, #9 Stuffing Box
	53296	#10 Stuffing Box
8	51790	Uni-Valve

Item	Part Number	Description
8a	50465	Uni-Valve Seal Kit
8b	26550	Discharge Valve Spring
8c	26549	Suction Valve Spring
8d	51814	Spring Retainer
8e	26546	Retaining Ring
9	51974	Manifold
10	52035	Rupture Disc Holder
10a	52040	Seal
10b	52043	Base
10c	51838	Disc, 24,000 psi Burst
	51837	Disc, 27,000 psi Burst
	51836	Disc, 29,000 psi Burst
10d	51773	Hold-Down Ring
10e	51772	Cap
11	25607	Manifold Bolt

Item	Part Number	Description
12	51955	Lube Harness
12a	27101	Ball Valve
12b	25946	Nipple
12c	53242	Lube Manifold
12d	26802	Reducing Bushing
12e	26874	Hose Fitting
12f	26469	Hose
12g	27475	Needle Valve
12h	26465	Nipple
13	51659	Trunnion
14	26468	Cotter Pin
15	50295	Trunnion Rod
16	50889	Pump Wrench
17	26212	Adapter Plate Bolt
18	51714	Adapter Plate
19	51719	Plunger Adapter

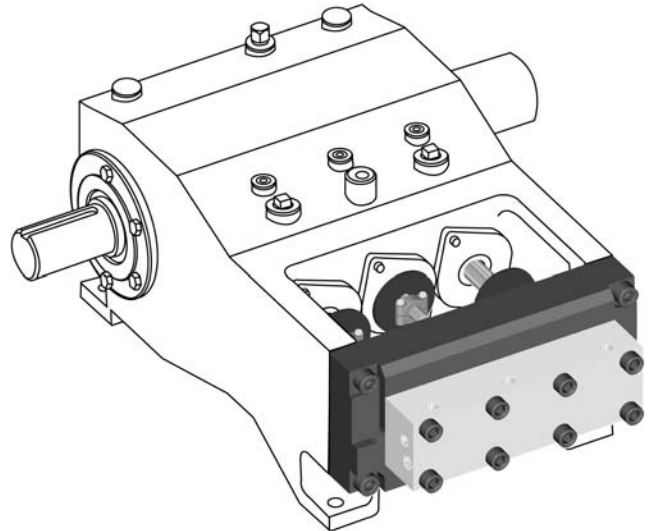
PUMPS & FLUID ENDS

20,000 PSI



UNx™ FLUID END UPGRADE BUTTERWORTH L-375 PUMPS GARDNER-DENVER TF-375 PUMPS

The Jetstream UNx™ Fluid End Upgrade is ideal for replacing a damaged, costly, or unreliable fluid end. It is also a cost-effective solution to increase available operating pressure or range of pressures for those who have already converted to the UNx™. The upgrade delivers all of the benefits of the UNx™ Fluid End design.



- Flow up to 15.5 gallons per minute at 20,000 psi*
- Superior performance
- Greater flexibility in the field
- Reduced downtime and maintenance
- **See UNx™ Features and Benefits on page B-1.**
- Includes hose adapters and one rupture disc holder.
- Choose an additional rupture disc holder or a Severe Service Relief Valve as a second safety device.
- Pressure gauge not included
- Bolt-on installation to an existing Butterworth L-375 or Gardner-Denver TF-375 power end requires only minutes.

Fluid End Part Number	Plunger Size		Connection Types**		Pump Displacement at Specified Pump Speeds*								Max. Operating Pressure		
	No.	Diameter			200 RPM		300 RPM		400 RPM		500 RPM				
		in	mm	Top Ports	Discharge Ports	gpm	lpm	gpm	lpm	gpm	lpm	gpm	lpm	psi	bar
52545	#8	.800	20.32	20K Port Female	20K Port Female	4.9	18.5	7.3	27.8	9.8	37.1	12.2	46.3	20,000	1,379
54790	#9	.900	22.86			6.2	23.5	9.3	35.2	12.4	47.0	15.5	58.7	20,000	1,379

* Displacement (flow) values represented refer to "theoretical" flow, neglecting inefficiency resulting from compressibility of water and expansion of pressure-bearing components.

** See details on all connection types beginning on page I-2.

Horsepower Chart

Common Engine Powers		Pump Displacement* at 20,000 psi (1,379 bar)	
hp	kW	gpm	lpm
152	113	11.8	44.6
174	130	13.5	51.0
200	149	15.5	58.7

Related Items

- SEVERE SERVICE RELIEF VALVE** – See Safety, Page G-4
- BYPASS VALVE** – See Control Guns & Valves, Page C-11
- REGULATOR VALVE** – See Guns, Valves, & Filters, Page C-12
- FILTERS** – See Guns, Valves, & Filters, Page C-16
- FITTINGS & GAUGES** – See Fittings & Gauges, Section F

PUMPS & FLUID ENDS

20,000 PSI

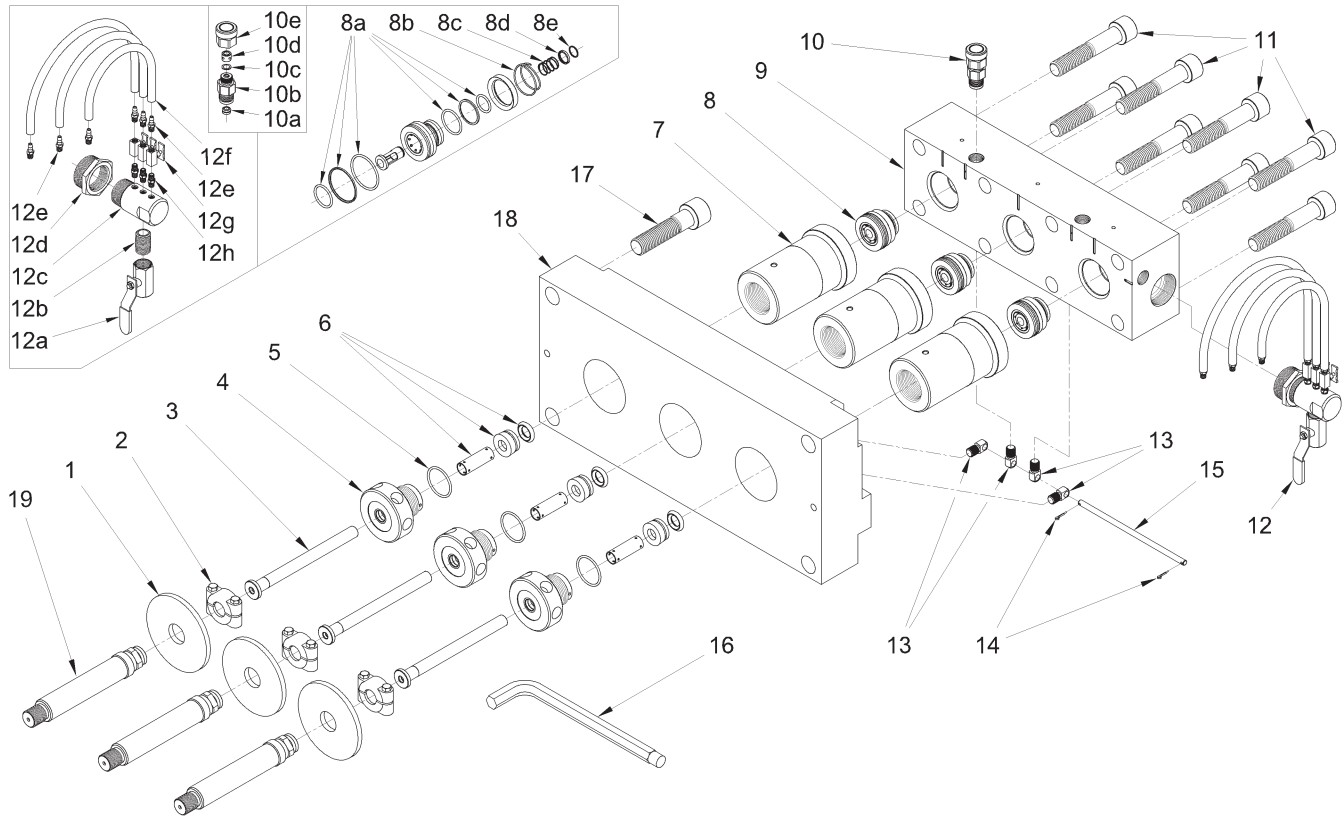


UNx™ FLUID END UPGRADE

BUTTERWORTH L-375 PUMPS

GARDNER-DENVER TF-375 PUMPS

REPLACEMENT PARTS



Item	Part Number	Description
1	26487	Deflector
2	51736	Plunger Coupling
3	50301	#8 Plunger
	51828	#9 Plunger
4	51832	#8 Gland Nut
	51829	#9 Gland Nut
5	26416	O-Ring
6	51857	#8 Packing Set
	51826	#9 Packing Set
7	50306	#8, #9 Stuffing Box
8	51790	Uni-Valve
8a	50465	Uni-Valve Seal Kit
8b	26550	Discharge Valve Spring
8c	26549	Suction Valve Spring

Item	Part Number	Description
8d	51814	Spring Retainer
8e	26546	Retaining Ring
9	52487	Manifold
10	52035	Rupture Disc Holder
10a	52040	Seal
10b	52043	Base
10c	51838	Disc, 24,000 psi Burst
	51837	Disc, 27,000 psi Burst
	51836	Disc, 29,000 psi Burst
10d	51773	Hold-Down Ring
10e	51772	Cap
11	25607	Manifold Bolt
12	51955	Lube Harness
12a	27101	Ball Valve

Item	Part Number	Description
12b	25946	Nipple
12c	53242	Lube Manifold
12d	26802	Reducing Bushing
12e	26874	Hose Fitting
12f	26469	Hose
12g	27475	Needle Valve
12h	26465	Nipple
13	51659	Trunnion
14	26468	Cotter Pin
15	50295	Trunnion Rod
16	50889	Pump Wrench
17	26220	Adapter Plate Bolt
18	52197	Adapter Plate
19	52196	Plunger Adapter

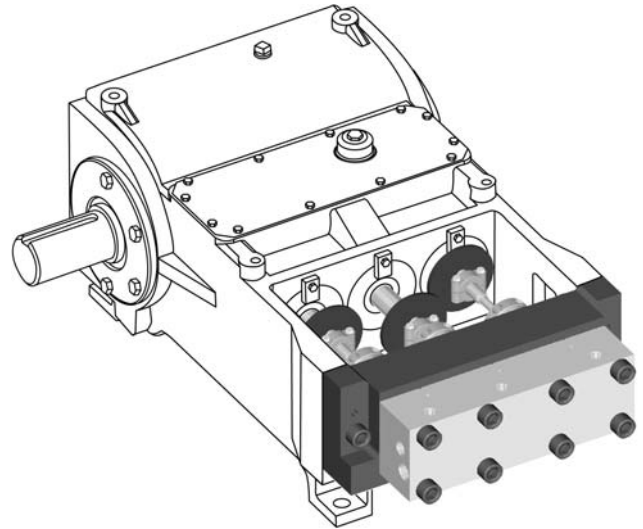
PUMPS & FLUID ENDS

20,000 PSI



UNx™ FLUID END UPGRADE NLB TRIPLEX PUMPS 150 TO 225 HORSEPOWER

The Jetstream UNx™ Fluid End Upgrade is ideal for replacing a damaged, costly, or unreliable fluid end. It is also a cost-effective solution to increase available operating pressure or range of pressures for those who have already converted to the UNx™. The upgrade delivers all of the benefits of the UNx™ Fluid End design.



- Flow up to 17.6 gallons per minute at 20,000 psi*
- Superior performance
- Greater flexibility in the field
- Reduced downtime and maintenance
- **See UNx™ Features and Benefits on page B-1.**
- Includes hose adapters and one rupture disc holder.
- Choose an additional rupture disc holder or a Severe Service Relief Valve as a second safety device.
- Pressure gauge not included
- Bolt-on installation to an existing NLB triplex power end requires only minutes

Fluid End Part Number	Plunger Size		Connection Types**		Pump Displacement at Specified Pump Speeds*								Max. Operating Pressure		
	No.	Diameter			200 RPM		300 RPM		400 RPM		500 RPM				
		in	mm	Top Ports	Discharge Ports	gpm	lpm	gpm	lpm	gpm	lpm	gpm	lpm	psi	bar
52160	#8	.800	20.32	20K Port Female	20K Port Female	4.6	21.0	8.3	31.5	11.1	42.0	13.9	52.5	20,000	1,379
54795	#9	.900	22.86			7.0	26.6	10.5	39.9	14.1	53.2	17.6	66.5	20,000	1,379

* Displacement (flow) values represented refer to "theoretical" flow, neglecting inefficiency resulting from compressibility of water and expansion of pressure-bearing components.

** See details on all connection types beginning on page I-2.

Horsepower Chart

Common Engine Powers		Pump Displacement* at 20,000 psi (1,379 bar)	
hp	kW	gpm	lpm
152	113	11.8	44.6
174	130	13.5	51.0
200	149	15.5	58.7

This UNx™ Fluid End Upgrade can be installed in place of any of the following NLB fluid end models:

- 10150
- 10155
- 10200
- 10205
- 10225
- 12155
- 12205
- 12225
- 20153
- 20156
- 20155
- 20203
- 20205
- 20225
- 24155
- 24205
- 24225
- 40201

Related Items

- SEVERE SERVICE RELIEF VALVE** – See Safety, Page G-4
- BYPASS VALVE** – See Control Guns & Valves, Page C-11
- REGULATOR VALVE** – See Guns, Valves, & Filters, Page C-12
- FILTERS** – See Guns, Valves, & Filters, Page C-16
- FITTINGS & GAUGES** – See Fittings & Gauges, Section F

Once upgraded to the UNx™ design, the NLB unit can be supplemented with additional UNx™ fluid ends to expand its range of operating pressures from 6,000 psi to 40,000 psi.

PUMPS & FLUID ENDS

20,000 PSI

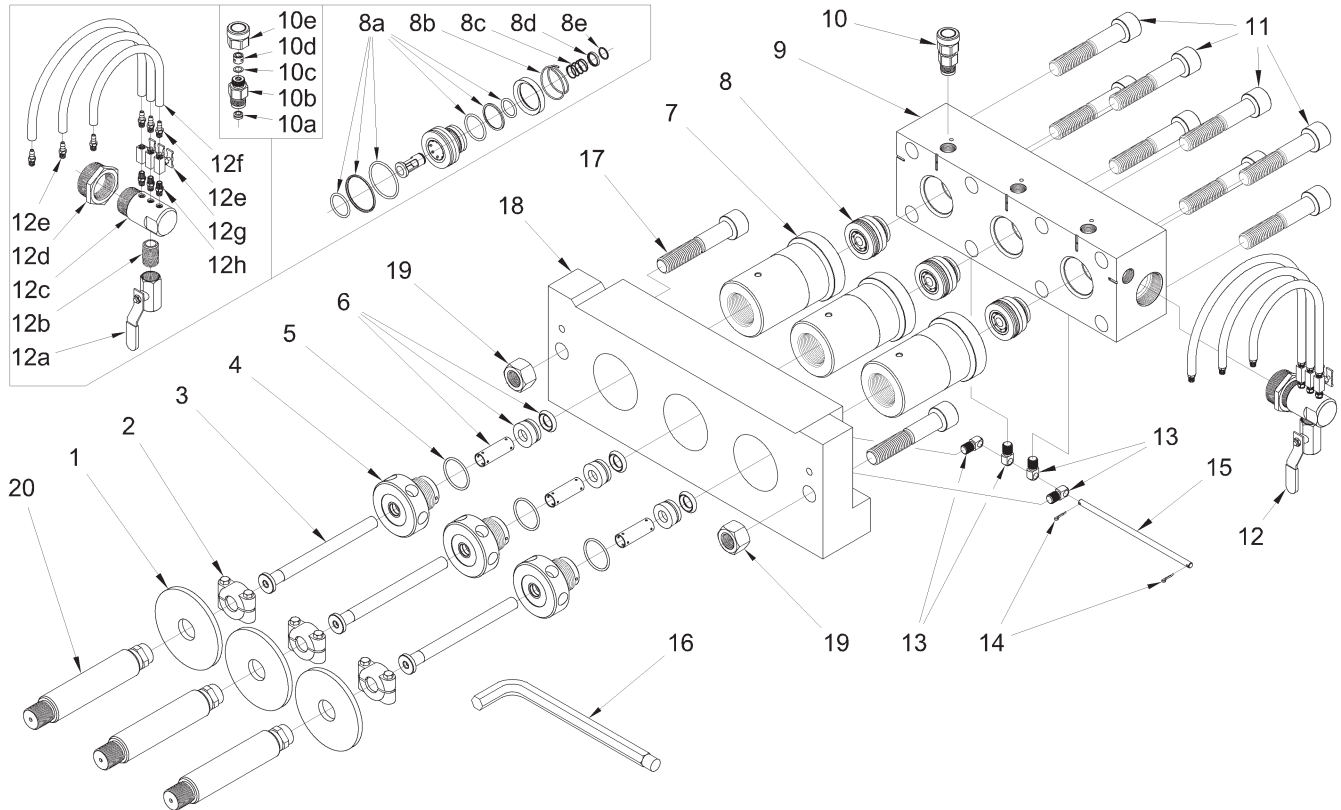


UNx™ FLUID END UPGRADE

NLB TRIPLEX PUMPS

150 TO 225 HORSEPOWER

REPLACEMENT PARTS



Item	Part Number	Description
1	26487	Deflector
2	51736	Plunger Coupling
3	50301	#8 Plunger
	51828	#9 Plunger
4	51832	#8 Gland Nut
	51829	#9 Gland Nut
5	26416	O-Ring
6	51857	#8 Packing Set
	51826	#9 Packing Set
7	50306	#8, #9 Stuffing Box
8	51790	Uni-Valve
8a	50465	Uni-Valve Seal Kit
8b	26550	Discharge Valve Spring
8c	26549	Suction Valve Spring

Item	Part Number	Description
8d	51814	Spring Retainer
8e	26546	Retaining Ring
9	51818	Manifold
10	52035	Rupture Disc Holder
10a	52040	Seal
10b	52043	Base
10c	51838	Disc, 24,000 psi Burst
	51837	Disc, 27,000 psi Burst
	51836	Disc, 29,000 psi Burst
10d	51773	Hold-Down Ring
10e	51772	Cap
11	25607	Manifold Bolt
12	51955	Lube Harness
12a	27101	Ball Valve

Item	Part Number	Description
12b	25946	Nipple
12c	53242	Lube Manifold
12d	26802	Reducing Bushing
12e	26874	Hose Fitting
12f	26469	Hose
12g	27475	Needle Valve
12h	26465	Nipple
13	51659	Trunnion
14	26468	Cotter Pin
15	50295	Trunnion Rod
16	50889	Pump Wrench
17	26500	Adapter Plate Bolt
18	50293	Adapter Plate
19	26669	Adapter Plate Nut
20	51766	Plunger Adapter

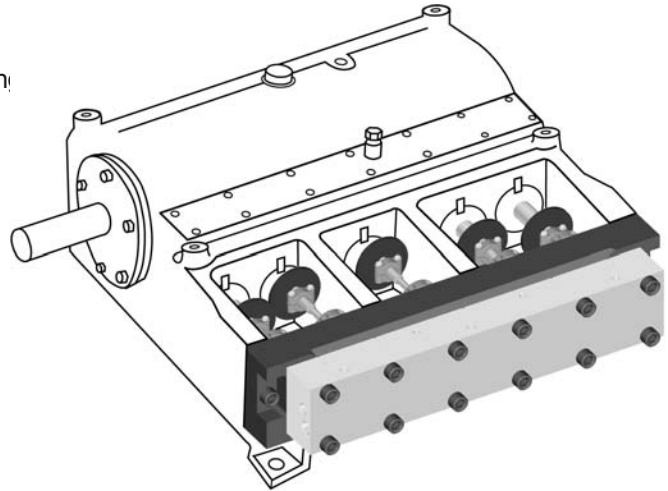
PUMPS & FLUID ENDS

20,000 PSI



UNx™ FLUID END UPGRADE NLB QUINTUPLEX PUMPS UP TO 250 HORSEPOWER

The Jetstream UNx™ Fluid End Upgrade is ideal for replacing a damaged, costly, or unreliable fluid end. It is also a cost-effective solution to increase available operating pressure or range of pressures for those who have already converted to the UNx™. The upgrade delivers all of the benefits of the UNx™ Fluid End design.



- Flow up to 18.5 gallons per minute at 20,000 psi*
- Five plunger (quintuplex) design
- Superior performance
- Greater flexibility in the field
- Reduced downtime and maintenance
- **See UNx™ Features and Benefits on page B-1.**
- Includes hose adapters and one rupture disc holder.
- Choose an additional rupture disc holder or a Severe Service Relief Valve as a second safety device.
- Pressure gauge not included
- Bolt-on installation to an existing NLB quintuplex power end requires only minutes

Fluid End Part Number	Plunger Size		Connection Types**		Pump Displacement at Specified Pump Speeds*								Max. Operating Pressure		
	No.	Diameter			150 RPM		200 RPM		300 RPM		400 RPM				
		in	mm	Top Ports	Discharge Ports	gpm	lpm	gpm	lpm	gpm	lpm	gpm	lpm	psi	bar
53580	#8	.800	20.32	20K Port Female	20K Port Female	6.9	26.3	9.3	35.0	13.9	52.5	18.5	70.0	20,000	1,379

* Displacement (flow) values represented refer to "theoretical" flow, neglecting inefficiency resulting from compressibility of water and expansion of pressure-bearing components.

** See details on all connection types beginning on page I-2.

Horsepower Chart

Common Engine Powers		Pump Displacement* at 20,000 psi (1,379 bar)	
hp	kW	gpm	lpm
200	149	15.5	58.7
215	160	16.7	63.1
250	186	19.4	73.3
260	194	20.2	76.3

This UNx™ Fluid End Upgrade can be installed in place of either of the following NLB fluid end models:

- 10250
- 20253

Once upgraded to the UNx™ design, the NLB unit can be supplemented with additional UNx™ fluid ends to expand its range of operating pressures from 6,000 psi to 40,000 psi.

Related Items

SEVERE SERVICE RELIEF VALVE – See Safety, Page G-4

BYPASS VALVE – See Control Guns & Valves, Page C-11

REGULATOR VALVE – See Guns, Valves, & Filters, Page C-12

FILTERS – See Guns, Valves, & Filters, Page C-16

FITTINGS & GAUGES – See Fittings & Gauges, Section F

HOSES & LANCES

20,000 PSI

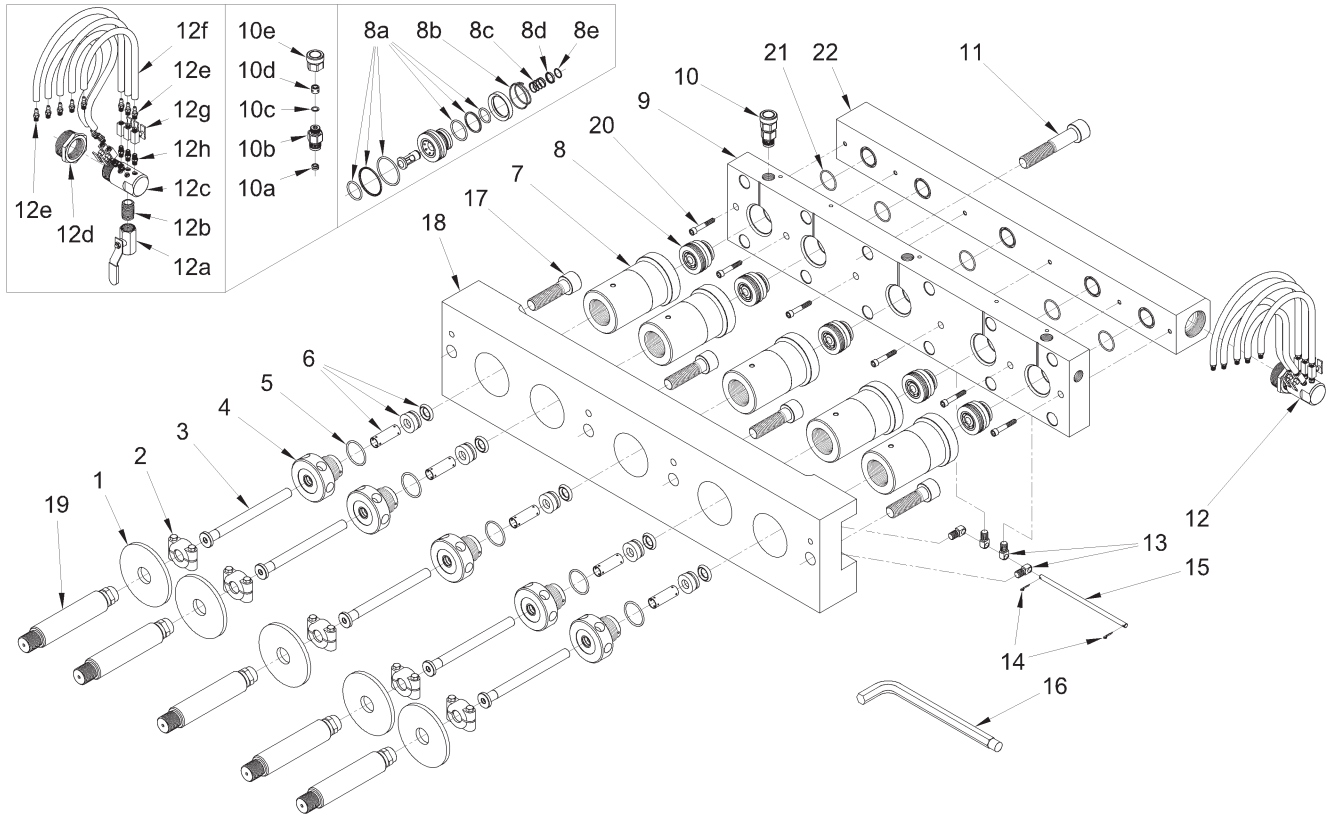


UNX™ FLUID END UPGRADE

NLB QUINTUPLEX PUMPS

UP TO 250 HORSEPOWER

REPLACEMENT PARTS



Item	Part Number	Description
1	26487	Deflector
2	51736	Plunger Coupling
3	50301	#8 Plunger
4	51832	#8 Gland Nut
5	26416	O-Ring
6	51857	#8 Packing Set
7	50306	#8 Stuffing Box
8	51790	Uni-Valve
8a	50465	Uni-Valve Seal Kit
8b	26550	Discharge Valve Spring
8c	26549	Suction Valve Spring
8d	51814	Spring Retainer
8e	26546	Retaining Ring
9	53599	Manifold

Item	Part Number	Description
10	52035	Rupture Disc Holder
10a	52040	Seal
10b	52043	Base
10c	51838	Disc, 24,000 psi Burst
	51837	Disc, 27,000 psi Burst
	51836	Disc, 29,000 psi Burst
10d	51773	Hold-Down Ring
10e	51772	Cap
11	27550	Manifold Bolt
12	53590	Lube Harness
12a	27101	Ball Valve
12b	25946	Nipple
12c	53793	Lube Manifold
12d	27729	Reducing Bushing

Item	Part Number	Description
12e	26874	Hose Fitting
12f	26469	Hose
12g	27475	Needle Valve
12h	26465	Nipple
13	51659	Trunnion
14	26468	Cotter Pin
15	50295	Trunnion Rod
16	50889	Pump Wrench
17	27550	Adapter Plate Bolt
18	53602	Adapter Plate
19	51766	Plunger Adapter
20	27551	Suction Manifold Bolt
21	25566	O-Ring
22	53601	Suction Manifold

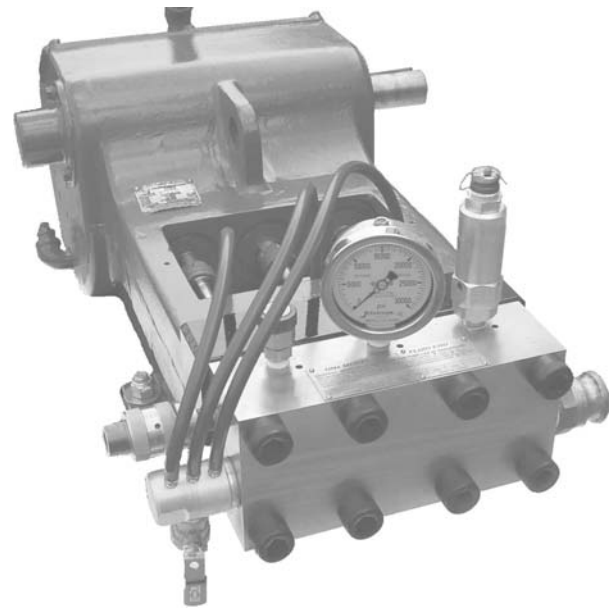
PUMPS & FLUID ENDS

20,000 PSI



UNX™ FLUID END UPGRADE WOMA 150 SERIES PUMPS

The Jetstream UNx Fluid End Upgrade is ideal for replacing a damaged, costly, or unreliable fluid end. It is also a cost-effective solution to increase available operating pressure or range of pressures for those who have already converted to the UNx™. The upgrade delivers all of the benefits of the UNx™ Fluid End design.



- Flow up over 9 gallons per minute at 20,000 psi*
- Superior performance
- Greater flexibility in the field
- Reduced downtime and maintenance
- **See UNx™ Features and Benefits on page B-1.**
- Includes hose adapters and one rupture disc holder.
- Choose an additional rupture disc holder or a Severe Service Relief Valve as a second safety device.
- Pressure gauge not included
- Bolt-on installation to an existing Woma 150 Series power end requires only minutes

Fluid End Part Number	Plunger Size		Connection Types**		Pump Displacement at Specified Pump Speeds*								Max. Operating Pressure		
	No.	Diameter			150 RPM		200 RPM		300 RPM		400 RPM				
		in	mm	Top Ports	Discharge Ports	gpm	lpm	gpm	lpm	gpm	lpm	gpm	lpm	psi	bar
54565	#7	.700	17.78	20K Port Female	20K Port Female	3.7	14.2	5.6	21.2	7.5	28.3	9.4	35.4	20,000	1,379

* Displacement (flow) values represented refer to "theoretical" flow, neglecting inefficiency resulting from compressibility of water and expansion of pressure-bearing components.

** See details on all connection types beginning on page I-2.

Horsepower Chart

Common Engine Powers		Pump Displacement* at 20,000 psi (1,379 bar)	
hp	kW	gpm	lpm
75	56	5.8	22.0
100	75	7.8	29.3
110	82	8.5	32.3
125	93	9.7	36.7

This UNx™ Fluid End Upgrade can be installed in place of any of the following Woma 150 Series fluid end models:

- 1502
- 150 Z
- 1503
- 150 Z-2000
- 150 ARP

Once upgraded to the UNx™ design, the NLB unit can be supplemented with additional UNx™ fluid ends to expand its range of operating pressures.

Related Items

SEVERE SERVICE RELIEF VALVE – See Safety, Page G-4

BYPASS VALVE – See Control Guns & Valves, Page C-11

REGULATOR VALVE – See Guns, Valves, & Filters, Page C-12

FILTERS – See Guns, Valves, & Filters, Page C-16

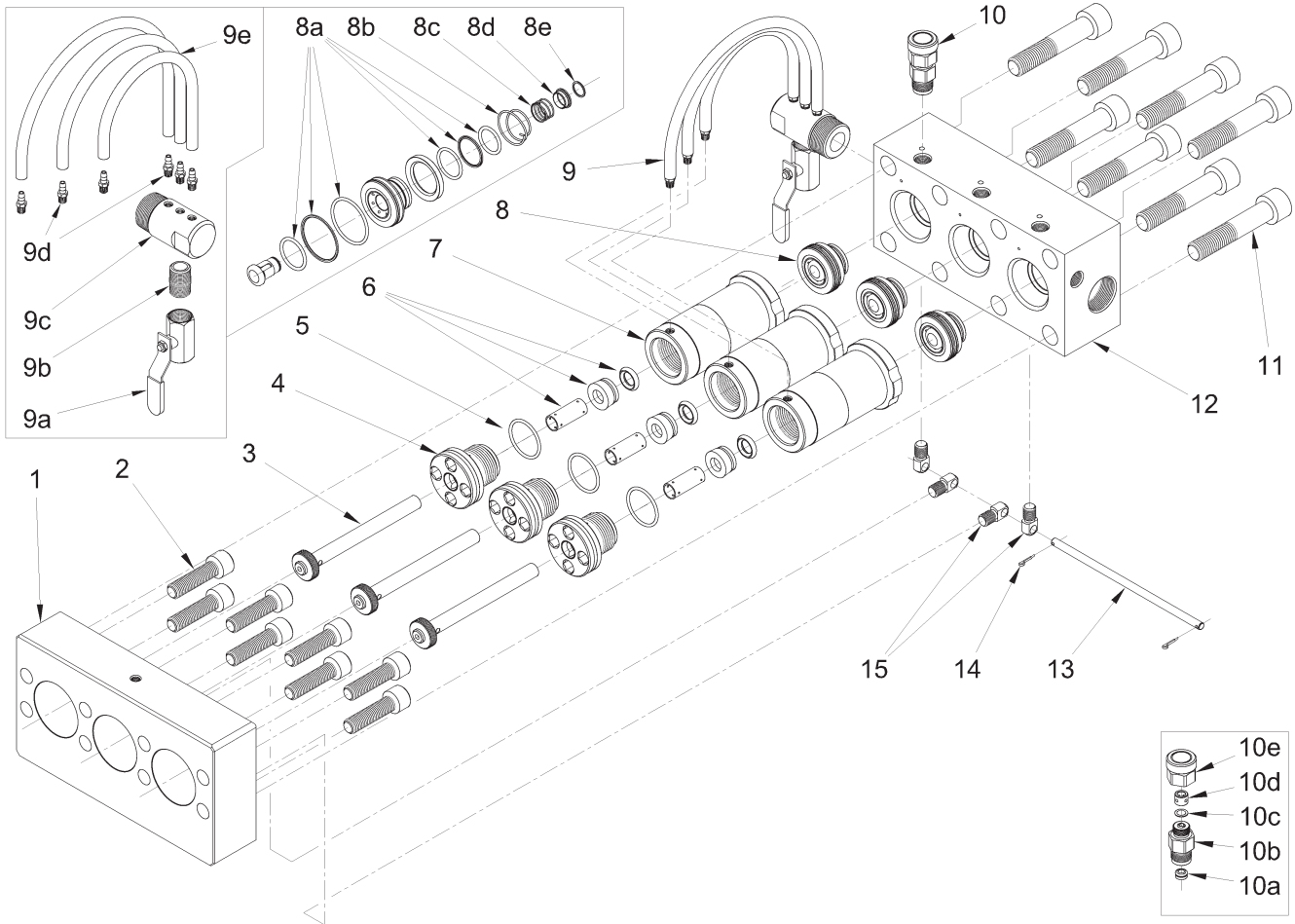
FITTINGS & GAUGES – See Fittings & Gauges, Section F

PUMPS & FLUID ENDS

20,000 PSI



UNx™ FLUID END UPGRADE WOMA 150 SERIES PUMPS REPLACEMENT PARTS



Item	Part Number	Description
1	54426	Adapter Plate
2	28616	Capscrew
3	54504	#7 Plunger
4	54509	#7 Gland Nut
5	25165	O-ring
6	51787	#7 Packing Set
7	54498	#7 Stuffing Box
8	51780	Uni-Valve
8a	51968	Uni-Valve Seal Kit
8b	25908	Discharge Valve Spring
8c	26145	Suction Valve Spring
8d	51758	Spring Retainer

Item	Part Number	Description
8e	26501	Retaining Ring
9	51970	Lube Harness
9a	27101	Ball Valve
9b	25946	Nipple
9c	53242	Lube Manifold
9d	26874	Hose Fitting
9e	26469	Hose
10	52035	Rupture Disc Holder
10a	52040	Seal
10b	52043	Base

Item	Part Number	Description
10c	51838	Disc, 24,000 psi Burst
	51837	Disc, 27,000 psi Burst
	51836	Disc, 29,000 psi Burst
10d	51773	Hold-Down Ring
10e	51772	Cap
11	28462	Capscrew
12	54493	Manifold
13	51666	Trunnion Rod
14	26468	Cotter Pin
15	51659	Trunnion
16	26544	5/8" Hex Wrench
17	25421	3/4" Hex Wrench