

NEW PUMPS

High Volume, Sound Attenuated, High Head, Specialty, Electric, Hydraulic Submersible, Wellpoint, Air Operated Double Diaphragm, Submersible Sewage, Submersible Dewatering



HIGH VOLUME DIESEL PUMP

- Continuous auto-priming
- Run Dry capabilities
- Solids handling
- Suction lifts up to 28'

Models available with FT4 engines auto-start capabilities



MAKE	MODEL	DESCRIPTION	MAX FLOW	MAX HEAD	SOLIDS HANDLING	MAX FUEL CONS	CAT-CLASS
Cornell	4NNTL	Vac Assist 4" x 4" DSL	1,500 GPM	165'	3"	1.6 GPH @Max RPM	801-1210
Cornell	6NNT	Vac Assist 6" x 6" DSL	2,600 GPM	150'	3"	3.9 GPH @Max RPM	801-1230
Cornell	6NHTA	Vac Assist 6" x 6" SUPER DSL	3,600 GPM	240'	3'	9.3 GPH @Max RPM	801-1250
Cornell	8NNT	Vac Assist 8" x 8" DSL	4,000 GPM	160'	3.4"	8.33 GPH @Max RPM	801-1270
Pioneer	PP88S12	Vac Assist 8" x 8" SUPER DSL	4,500 GPM	200'	3"	3.8 GPH @Max RPM	801-1280
Cornell	12NNT	Vac Assist 12" x 12" DSL	5,800 GPM	225'	4"	12.3 GPH @Max RPM	801-1290
Pioneer	PP12S17	Vac Assist 12" x 12" SUPER DSL	6,440 GPM	125'	3.8"	19.5 GPH @Max RPM	801-1300
Pioneer	PP1414S175	Vac Assist 14" x 14" DSL	14,200 GPM	210'	4"	24 GPH @Max RPM	801-1320
Cornell	18NH622	Vac Assist 18" x 18" DSL	18,000 GPM	240'	4.5"	20 GPH @Max RPM	801-1330

SOUND ATTENUATED DIESEL PUMP

- Sound level - 70 DBA @ 30'
- 14-gauge solid steel outer shell
- Hinged, lockable swinging doors for easy access
- Auto-start Capabilities
- Run Dry capabilities



MAKE	MODEL	DESCRIPTION	MAX FLOW	MAX HEAD	SOLIDS HANDLING	MAX FUEL CONS	CAT-CLASS
Cornell	4NNTL-SA	Vac Assist Sound Attenuated 4" x 4" DSL	1,500 GPM	150'	3"	1.6 GPH @Max RPM	802-1345
Vaughan	HE4K-VP-V1505	Vac Assist Sound Attenuated Chop 4" x 4" DSL	1,150 GPM	90'	NON-CLOG	1.5 GPH @Max RPM	802-1385
Cornell	6NNT-SA	Vac Assist Sound Attenuated 6" x 6" DSL	2,600 GPM	150'	3"	4.0 GPH @Max RPM	802-1355
Vaughan	HE6W8-VP-4045	Vac Assist Sound Attenuated Chop 6" x 6" DSL	2,500 GPM	145'	NON-CLOG	3.7 GPH @Max RPM	802-1390
Cornell	8NNT-SA	Vac Assist Sound Attenuated 8" x 8" DSL	3,500 GPM	160'	3.4"	4.7 GPH @Max RPM	802-1365
Cornell	12NNT-SA	Vac Assist Sound Attenuated 12" x 12" DSL	5,750 GPM	225'	4"	12.1 GPH @Max RPM	802-1370
Pioneer	PP1414S175	Vac Assist 14" x 14" DSL	14,200 GPM	210'	4"	24 GPH @Max RPM	801-1320

HIGH HEAD DIESEL PUMP

- 24/hr. running fuel capacity – most models
- Produce enough pressure to eliminate need for series pumping
- Proven design – reliable & rugged
- Safety shutdown switches
- Lofa - Automatic Control panel



MAKE	MODEL	DESCRIPTION	MAX FLOW	MAX HEAD	SOLIDS HANDLING	MAX FUEL CONS	CAT-CLASS
Cornell	2.5H	Vac Assist High Head 4" x 3" DSL	450 GPM	315'	.41"	4.7 GPH @Max RPM	802-1450
Cornell	3HC	Vac Assist High Head 6" x 3" DSL	1,100 GPM	430'	.50"	9.3 GPH @Max RPM	802-1470
Cornell	4NHTB	Vac Assist High Head 6" x 4" DSL	1,600 GPM	380'	3"	6.0 GPH @Max RPM	802-1480
Cornell	6HH	Vac Assist High Head 8" x 6" DSL	3,200 GPM	360'	1.2"	14.3 GPH @Max RPM	802-1520
Cornell	8NHTA	Vac Assist High Head 10" x 8" DSL	4,500 GPM	380'	3.4"	14.3 GPH @Max RPM	802-1550
Pioneer	PP12S17	Vac Assist 12" x 12" SUPER DSL	6,440 GPM	125'	3.8"	19.5 GPH @Max RPM	801-1300
Cornell	6822MX	Vac Assist High Head 8" x 6" DSL	4,000 GPM	650'	2"	30 GPH @Max RPM	813-2600

SPECIALTY DIESEL PUMP

- Acid Pumps
- Agriculture booster pump
- High temperature stainless steel shutdown probe
- Stainless steel & chrome options available
- Sealed pump priming system available for volatile liquids



MAKE	MODEL	DESCRIPTION	MAX FLOW	MAX HEAD	SOLIDS HANDLING	MAX FUEL CONS	CAT-CLASS
Cornell	4NNTL - SS	Vac Assist Stainless Steel 4" x 4" DSL	1,500 GPM	165'	3"	1.6 GPH @Max RPM	802-1400
Cornell	6NNT - SS	Vac Assist Stainless Steel 6" x 6" DSL	2,600 GPM	150'	3"	3.9 GPH @Max RPM	802-1410
Pioneer	PP8S12 - SS	Vac Assist Stainless Steel Super 8" x 8" DSL	4,500 GPM	200'	3"	3.8 GPH @Max RPM	803-1440
Cornell	3HC - SS	Vac Assist Stainless Steel High Head 6" x 3" DSL	1,100 GPM	430'	.50"	9.3 GPH @Max RPM	804-1560
Cornell	8NHTA - SS	Vac Assist Stainless Steel High Head 10" x 8" DSL	4,500 GPM	380'	3.4"	14.3 GPH @Max RPM	804-1570
Cornell	6RB	Manual Prime High Head 10" X 6" DSL	4,250 GPM	300'	1.3"	10.5 GPH @Max RPM	804-1530
Paco	3015-15	Vac Assist Volatile Liquid 4" X 4" DSL	1,050 GPM	344'	1"	12.3 GPH @Max RPM	821-2960
Paco	40157-LC	Sealed Prime High Head 5" X 4" DSL	1,043 GPM	203'	1"	12.3 GPH @Max RPM	821-2950

SUBMERSIBLE DEWATERING PUMP - ELECTRIC

- Compact
- Light weight
- No suction lift limitations
- Top discharge design
- Extended run dry capabilities
- Available options include: manual/ automatic controller, single or three phase, and slimline design



MAKE	MODEL	DESCRIPTION	MAX FLOW	MAX HEAD	CAT-CLASS
Tsurumi	LB(T)-800	Submersible 2" Electric	80 GPM	59'	809-1860
Tsurumi	LH-23.0	Submersible High Head 2" Electric	145 GPM	140'	809-1930
Tsurumi	LB(T)-1500	Submersible 3" Electric	60 GPM	40'	809-1880
Tsurumi	LH-33.0	Submersible High Head 3" Electric	60 GPM	110'	809-1980
Tsurumi	KTZ-45.5	Submersible 4" Electric	425 GPM	80'	809-2120
Tsurumi	LH-411	Submersible High Head 4" Electric	450 GPM	170'	809-2060
Tsurumi	KRS2-A6	Submersible 6" Electric	600 GPM	65'	809-2220
Tsurumi	KRS-822	Submersible 8" Electric	1,500 GPM	115'	809-2230
Sulzer	J604ND	Submersible 10" Electric	5,500 GPM	190'	809-2240

ELECTRIC PUMP

- Environmental-permit exempt
- Quiet Operation
- No fueling requirements
- Minimizes Emission footprint
- Available options include: High Volume, High Head, Soft start, and VFD



MAKE	MODEL	DESCRIPTION	MAX FLOW	MAX HEAD	SOLIDS HANDLING	CAT-CLASS
Premier	4NNTL-RP-E25	Vac Assist VFD 4" X 4" Electric	1,200 GPM	130'	3"	808-1760
Premier	6NHTA-60HP-E	Vac Assist 6" X 6" Electric	2,400 GPM	170'	3"	808-1770
Premier	8NNT-RP-E100	Vac Assist 8" X 8" Electric	4,000 GPM	195'	3.4"	808-1780
Premier	3HC - E	Vac Assist High Head 6" X 3" Electric	1,100 GPM	430'	.50"	808-1800
Premier	6HH - E	Vac Assist High Head 8" X 6" Electric	3,200 GPM	300'	1.2"	808-1810

HYDRAULIC SUBMERSIBLES

- Variable speed throttle control
- Residential muffler
- Automatic oil pressure / temperature safety shut down
- Submersible pump head options



MAKE	MODEL	DESCRIPTION	MAX FLOW	SOLIDS HANDLING	MAX FUEL CONS	CAT-CLASS
Portable Pumping Systems	MAC 400	65 HP Submersible Hydraulic Power Unit	44 GPM	N/A	1gph @Max RPM	814-2630
Portable Pumping Systems	MAC 4" M	4" Submersible Hydraulic Power Unit	800 GPM	5"	N/A	811-2280
Portable Pumping Systems	MAC 6" MH	6" Submersible Hydraulic Power Unit	1,500 GPM	5"	N/A	811-2310

WELLPOINT PUMPS

- Positive Displacement
- Air handling capabilities
- Available options include: Sound attenuated and variable flow rate adjustment reducing fuel consumption
- Conventional or sock dewatering

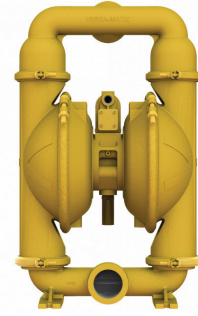


MAKE	MODEL	DESCRIPTION	MAX FLOW	AIR MOVING CAPACITY	MAX FUEL CONS	CAT-CLASS
MSP	DD-6	6" Double Diaphragm DSL	450 GPM @30'	70 CFM	3.4 GPH @Max RPM	800-1160
Vogelsang	6RPBDWQP-TR	Well Point Rotary Sound Attenuated 6" DSL	600 GPM	80 CFM	.5 GPH @Max RPM	806-1670
Vogelsang	TE8RPQP-SK	Well Point Rotary Sound Attenuated 8" DSL	1330 GPM	174 CFM	.75 GPH @Max RPM	806-1680
Vogelsang	12RPQP-SK	Well Point Rotary 12" DSL	2650 GPM	348 CFM	1.2 GPH @Max RPM	806-1690



AIR OPERATED DOUBLE DIAPHRAGM

- Long term reliability
- Low maintenance
- Stainless steel, Polypropylene, and Aluminum options available
- Buna, Viton, and Teflon Elastomer options available



MAKE	MODEL	DESCRIPTION	MAX FLOW	CAT-CLASS
Versa-Matic	E1 - Poly	Air Operated Double Diaphragm Poly 1"	45 GPM	812-2360
Versa-Matic	E1 - Aluminum	Air Operated Double Diaphragm Aluminum 1"	46 GPM	812-2370
Versa-Matic	E2 - Poly	Air Operated Double Diaphragm Poly 2"	177 GPM	812-2390
Versa-Matic	E2 - Stainless Steel	Air Operated Double Diaphragm SS 2"	185 GPM	812-2400
Versa-Matic	E2- Aluminum	Air Operated Double Diaphragm Aluminum 2"	163 GPM	812-2410
Versa-Matic	E3 - Poly	Air Operated Double Diaphragm Poly 3"	238 GPM	812-2430
Versa-Matic	E3 - Aluminum	Air Operated Double Diaphragm Aluminum 3"	220 GPM	812-2440
Versa-Matic	E3 - Stainless Steel	Air Operated Double Diaphragm SS 3"	234 GPM	812-2450

SUBMERSIBLE SEWAGE PUMP - ELECTRIC

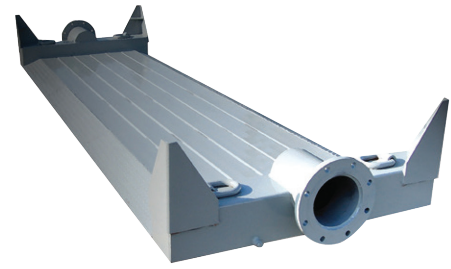
- Side Discharge
- Single or 3-phase power
- Mechanical Seals
- 50' Power cord
- Available options include: Non-clog cutter, variable flow / head, sewer manhole, and Explosion proof Class 1 DIV 1



MAKE	MODEL	DESCRIPTION	MAX FLOW	MAX HEAD	SOLIDS HANDLING	CAT-CLASS
Tsurumi	50C2.75	Submersible Sewage 1 HP 2" Electric	40 GPM	38'	N/A	809-1870
Tsurumi	100C42.2	Submersible Sewage 3 HP 4" Electric	300 GPM	50'	N/A	809-2030
Tsurumi	100C43.7	Submersible Sewage Cut 5 HP 4" Electric	450 GPM	55'	N/A	809-2040
Tsurumi	100C47.5	Submersible Sewage 10 HP 4" Electric	625 GPM	80'	N/A	809-2050
Tsurumi	100C415	Submersible Sewage 20 HP 4" Electric	575 GPM	90'	N/A	809-2080
Paco	612 - 13/14	Submersible Sewage 30 HP 4" Electric	2,300 GPM	70'	3"	809-2100
Paco	612 - 15/16	Submersible Sewage 50 HP 6" Electric	2,500 GPM	90'	3"	809-2180

ACCESSORIES - ROAD CROSSING

- Four HD "D" lifting rings
- Angled approach ramps
- Constructed from 1/4" steel wall material
- 3" x 6" rectangular cross tubing
- 150# flange inlet/outlet
- Hot dipped galvanized to prevent corrosion and rust for longer life



MAKE	MODEL	DESCRIPTION	CAT-CLASS
Dragon	6" x 12'	6" ROAD CROSSING	820-2900
Dragon	8" x 12'	8" ROAD CROSSING	820-2880
Dragon	12" x 12'	12" ROAD CROSSING	820-2870
Dragon	12" x 24'	12" DOUBLE WIDE ROAD CROSSING	820-2890

ACCESSORIES - CONTAINMENT BERMS

- Portable, reusable, and repairable
- Durable and lightweight
- Easy to set up and deploy



MAKE	MODEL	DESCRIPTION	CAT-CLASS
PACTEC	PT8812	8' X 8' CONTAINMENT BERM	913-1024
PACTEC	PT101012	10' X 10' CONTAINMENT BERM	913-1039
PACTEC	PT121212	12' X 12' CONTAINMENT BERM	913-1051
PACTEC	PT122512	12' X 25' CONTAINMENT BERM	913-1060

ACCESSORIES - HOSES/PIPING

Suction Hose	2" - 8"
Layflat Discharge Hose	2" - 8"
Chemical Hose	2" - 8"
Stainless Steel Hose	3/4" - 12"
Flanged Dock Hose	4" - 14"

Fusible HDPE	4", 12", 18"
Quick Disconnect Galvanized Pipe	4", 6", 8", 12"
Certalok PVC Piping	6" - 12"
Victaulic Aluminum Pipe	8", 12"

ACCESSORIES

Fuel Cubes	500 Gallon -2,400 Gallon
Pipe Plugs	6" - 60"
Auto Dialers	
Manifolds	

