

Volkswagen Information Service. Telephone 0800 333 666

Internet: www.volkswagen.co.uk

© Volkswagen Group United Kingdom Limited 2002.

Issue: 1 August 2002. Printed in UK.

PVW049BO



The Bora

2003 Model Year



Discover a new driving
experience.



Model shown is the Bora ST with optional factory-fitted sunroof.

4 *Philosophy*

6 *Interior Design*

10 *Safety*

16 *Engines*

22 *Quality*

26 *The Bora S*

30 *The Bora ST*

34 *The Bora SE*

38 *The Bora Sport and Bora V5*

42 *The Bora V6 4MOTION*

46 *Optional Equipment*

52 *Accessories*

58 *Colours and Upholstery*

66 *Technical Specification*

72 *Standard Equipment*

74 *Dimensions and Glossary*

76 *Volkswagen Service*

The B o r a .

If you're about to choose a new car, what would your list of requirements include? A powerful engine? Dynamic performance? A perfectly weighted chassis for agile roadholding? Quality build and a high level of safety and security? Such features, and more, are captured in the Bora. Why not follow us through this brochure to discover more about the Bora experience.



Model shown is the Bora SE.

Ergonomic perfection:

The key to *absolute*

driving pleasure.





Model shown is the Bora Sport 2.0 litre manual. Cruise control and leather upholstery are optional at extra cost.



For added convenience, the petrol flap can be opened from the driver's seat.



A fully adjustable driver's seat will help you achieve the most comfortable driving position.



For greater protection, front seat side airbags are standard on all Bora models.

At Volkswagen our designers and engineers are obsessed with detail. And the Bora is a perfect example of their deliberations.

Every switch has been carefully considered before being positioned for easy reach. The blue illuminated instrument display is not only clearly visible,

it's truly distinctive, like the Bora itself. The driver's seat can be adjusted for height, length and rake which, in combination with a height and reach adjustable steering wheel, allows you to achieve the optimum driving position. With such supportive seats, even long motorway

journeys become a more comfortable proposition.

Take a close look around the interior and you'll find more evidence of the detailed design, such as flush closing air vents and chrome-plated door release handles.

Safety features

you can *rely* on.



Model shown is the Bora ST.



The Electronic Stabilisation Programme constantly monitors driving situations.



By assessing the steering wheel lock...



...ESP ascertains the desired driving direction.



In a critical situation...



...ESP intervenes to help maintain directional control.

For every frequent road user, the one thing that counts above all, besides comfort and performance, is safety.

That's why, on the latest Bora, you'll find every model fitted with ESP, an Electronic Stabilisation Programme.

This intelligent system monitors the steering angle and compares it with the actual vehicle movement. If the system recognises a major variation it reacts in milliseconds by applying the brakes to individual wheels and automatically adjusting the engine's power output helping to correct oversteer, understeer and loss of stability of the vehicle. However, this additional safety feature should not lead to carelessness because, despite its proven quality, ESP cannot dispense

with the laws of physics. The ESP feature is also supported by Electronic Differential Lock (EDL) and Anti-Slip Regulation (ASR).

In combination, these exceptional innovations help maximise driver and passenger safety.



ABS is standard on all models to provide the highest level of active safety.

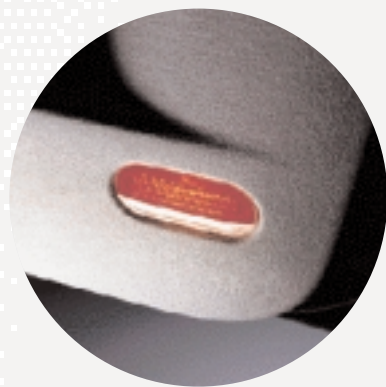
The exceptional protection offered by the Bora is achieved through both passive and active safety features.

Active safety features will help you avoid an accident in the first place. So, in addition to ESP, you'll find every Bora equipped

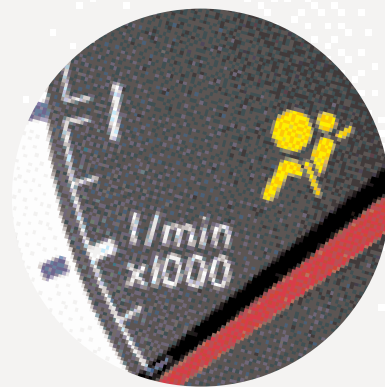
with disc brakes both front and rear. The front discs are also ventilated to deliver the most efficient braking.

Regardless of your driving experience, you can never account for other road users or unforeseeable driving situations.

It's unfortunate, but accidents do happen, so it's comforting to know you can rely on Volkswagen's passive safety features to help protect both you and your passengers.



At night-time, the door-mounted 'puddle' lights illuminate the ground when opening the front doors.



Driver and front passenger airbags are standard on all Bora models.



For greater protection, front seat side airbags are standard on all Bora models.

During the design process, advanced computer technology was employed to simulate collisions from probable angles. The information gathered was fully utilised in the Bora's chassis construction that has an inner survival zone guarded by crumple zones both front and rear. These crumple zones are designed to absorb energy following a collision, thereby helping to protect the survival zone and minimise occupant injury.



Two additional curtain airbags are available as an optional extra.

The second most common accident involves side impact. The Bora is, therefore, equipped with side airbags in the front seats, a reinforced chassis, energy absorbing protection padding and side impact bars. In addition, there is the innovative Isofix child seat mounting system. This allows children's seats equipped with the Isofix system to be fitted securely to the Bora's body via eyes between the rear seat backrest and seat base.



The Isofix system can quickly accommodate a child seat with an extremely secure fitting.

Volkswagen approved children's seats with the Isofix system can be purchased from your Volkswagen retailer.

As an optional extra, two curtain airbags are available to cushion both front and rear seated occupants. These airbags are situated overhead and cover the side windows to provide added protection around the head.

Whether you choose a petrol or diesel,
each engine shares the
Bora's *unique* character.



Model shown is the Bora S.



Model shown is the Bora ST.



The V5 is a development of the unique Volkswagen VR6 engine.



The V6 4MOTION features an intelligent four wheel drive system.

Once you've decided upon a Bora, you'll be faced with an enviable choice – which one of the nine highly efficient engines do you prefer? Will it be one of the six petrol engines? Such as the economical 1.6 litre 105 bhp manual, also available as a 102 bhp automatic version?

Perhaps the 2.0 litre 115 bhp or the V5 2.3 litre 170 bhp are more to your liking? If it's performance you're seeking, consider two 1.8 litre Turbo units, developing 150 bhp and 180 bhp or the powerful 2.8 litre V6 4MOTION producing 204 bhp and capable of 146 mph (where law permits).

Or would a diesel be more appropriate? There are three available, all 1.9 litre TDI versions; they produce 100 bhp, 130 bhp or 150 bhp. To complement the engine range there are manual, automatic or tiptronic gearboxes available.

Whichever power supply you choose, you'll find engine noise has been suppressed to an absolute minimum, helping you arrive at your destination in a more relaxed state.

If you desire performance, easy maintenance and fuel efficiency from your engine, why not consider one of Volkswagen's exceptional TDI diesel units? Diesel technology has advanced rapidly over the last few years and we're proud to have been at the leading edge. The TDI PD 130 bhp (PD stands for 'Pumpe Düse') features a new high pressure fuel injection system resulting in increased torque whilst maintaining exceptional fuel economy. When you consider that the 1.9 litre TDI PD 130 bhp can accelerate the Bora from 0 - 62 mph in just 10.1 seconds, reach 127 mph (where law permits) and still return 51.4 mpg over the Combined fuel cycle, it's easy to see why the new generation of diesels is such an appealing option.*

** According to EU Directive 99/94.*

Please see page 70 for diesel fuel consumption figures.



Two further diesel engines are available for the Bora; both are 1.9 litre units. The TDI PD 100 bhp and 150 bhp also benefit from 'Pumpe Düse' technology.

The mark of quality.

A 12-year anti-corrosion warranty.

BOORQA



The precise fit of the panels is evidence of the Bora's high quality of construction.

Take a look at the Bora's smooth flowing lines and you'd think it was crafted from a single piece of metal. The tolerances between the panels are so precise and close that the Bora possesses an impressive continuity.

Such high standards and exceptional build techniques are not merely for good looks – they also ensure longevity. The bodyshell is very rigid for improved roadholding and greater safety.

Because of the way the front and rear windscreens are bonded, body rigidity is increased, thereby helping to improve safety. Critical points on the bodyshell are bonded, using laser-welding, to maintain the highest quality and the chassis is zinc coated to prevent rust.

Our high standards enable us to offer a class-leading 12-year anti-corrosion warranty.

Model shown is the Bora S.

Today's driver *d e m a n d s* more.

With the Bora S

you won't be disappointed.





Model shown is the Bora S with 'Line' cloth upholstery.

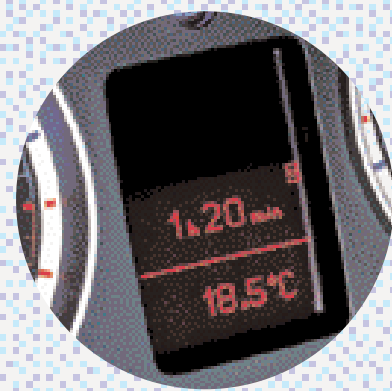
The Bora S.

The Bora S impresses in many respects – from its stylish design and outstanding quality to its dynamic performance.

But when you consider the list of standard equipment, you'll also appreciate why the Bora represents superb value for money.

All Boras are fitted with a multifunction computer, alarm with interior protection and remote central locking, Electronic Stabilisation Programme (ESP), ABS, driver and front passenger airbags, front seat side airbags, electrically heated and adjustable door mirrors, front and rear electric windows, manual air conditioning

and, on the S, ST and SE models, the centre console, ashtray lid and interior door handles are trimmed in stylish aluminium. There is also a height and reach adjustable steering wheel, an electronic engine immobiliser, 'Line' cloth upholstery and split folding rear seat with lockable backrest.



The multifunction computer allows you to monitor such information as journey time and fuel consumption.



An alarm with interior protection, with the added convenience of remote central locking, is standard on all models.



Front and rear electric windows are standard on all models.

Where *performance* meets *affordability*.

The Bora ST.





The Bora S T .

The latest arrival to the Bora range is the ST. It's an exciting addition, proving that performance, quality and high specification can be achieved at an extremely affordable price.

There are three engines available in the Bora ST – two petrol, one diesel. The two highly acclaimed 1.8 litre, turbocharged petrol units produce 150 bhp and 180 bhp, the latter capable of taking the Bora from 0 - 62 mph in 8.2 seconds and onto 142 mph, where law permits. The 1.9 litre TDI PD 130 bhp is the diesel alternative and is equally

impressive, combining good acceleration and top speed with the exceptional economy associated with a diesel. Such diesel efficiency has been achieved through 'Pumpe Düse' technology – a high pressure fuel injection system. It's the reason why the 1.9 litre TDI PD 130 bhp can reach 127 mph (where law permits), yet still return 51.4 mpg over the Combined fuel cycle.*

The equipment level of the ST shares the same high standards of the S plus body-coloured side



Sporty 15" 'Jarama' alloy wheels with 195/65 tyres are standard on ST models†.

and bumper strips, a 'Gamma' radio/cassette, a single CD player, rain sensitive windscreen wipers, automatic dimming interior rear-view mirror and 15 inch 'Jarama' alloy wheels with 195/65 tyres†.

** According to EU Directive 99/94. Please see pages 66, 67 and 70 for fuel consumption figures.*

† 16 inch 'Le Castellet' alloy wheels with 205/55 tyres are standard on ST 1.8T 180 bhp.

A choice of carpet mats is available from your Volkswagen retailer.



A rain sensor regulates the speed of the wipers depending on the weather conditions.



A front-loading single CD player and 'Gamma' radio/cassette are standard on ST models.



The automatic dimming interior rear-view mirror darkens if a following car's lights are too high.

For the *discerning* driver.

The Bora SE.





The Bora SE.

The Bora has been designed to deliver driving excitement, but not at the expense of comfort and convenience. Therefore, choose the Bora SE and you'll benefit from an extensive list of standard

equipment that includes a multifunction steering wheel including cruise control, front cup holders and 16 inch 'Le Castellet' alloy wheels with 205/55 tyres and anti-theft wheel bolts. Comfort is

further enhanced with 'Motion' velour upholstery, driver and front passenger seat height and lumbar adjustment and driver's seat centre armrest.

Model shown is the Bora SE automatic with 'Motion' velour upholstery. Front-loading single CD player is optional at extra cost.



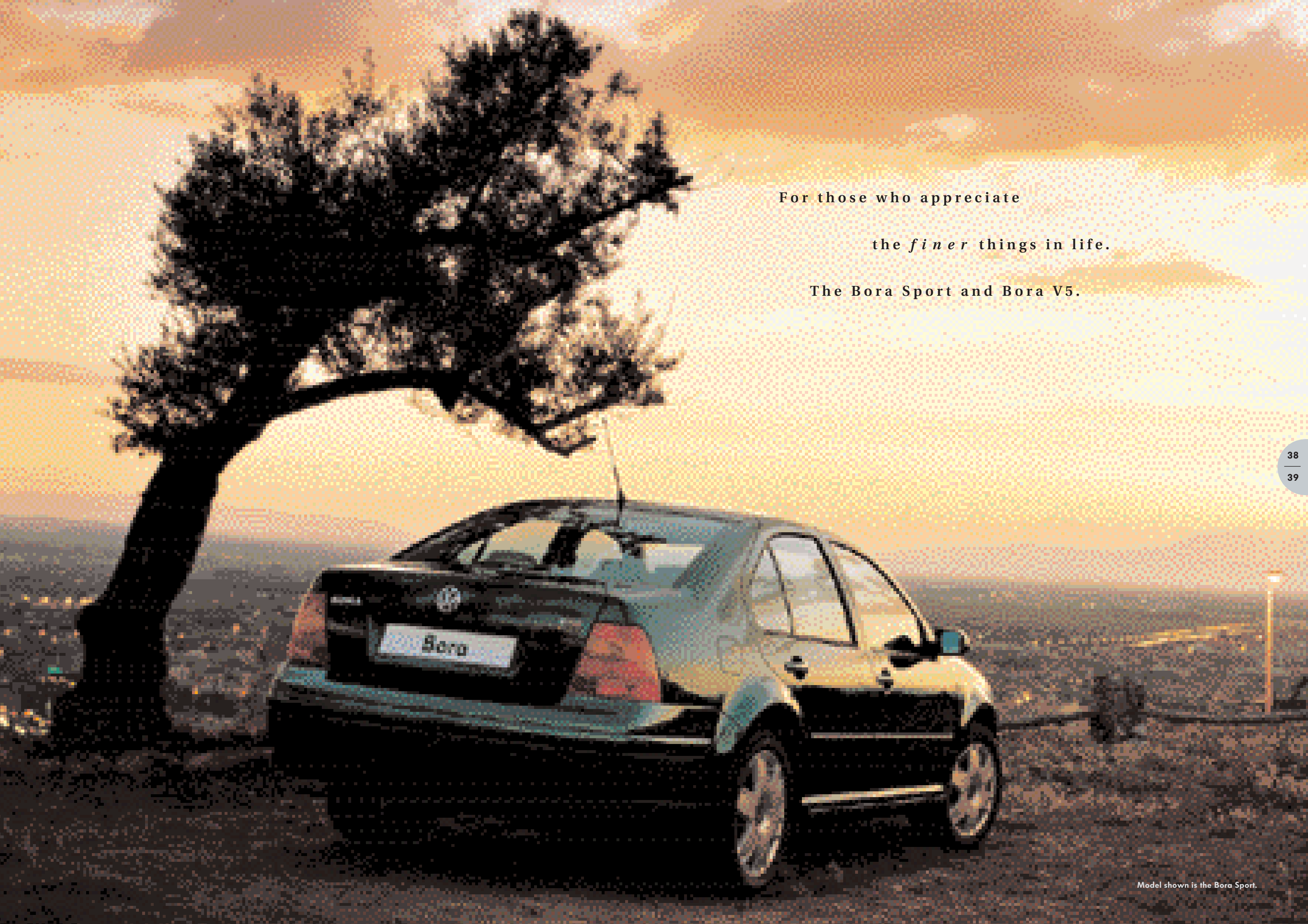
Elegant 16" 'Le Castellet' alloy wheels with 205/55 tyres are standard on SE models.



The multifunction steering wheel allows you to operate the cruise and radio controls without taking your hands off the wheel.



The 'Gamma' radio/cassette with RDS and EON, four front, four rear speakers and roof aerial is standard on ST, SE, Sport, V5 and V6 4MOTION.



For those who appreciate

the *finer* things in life.

The Bora Sport and Bora V5.



The Bora Sport.

The Bora Sport is available with three petrol and two diesel engines. You can choose from a 2.0 litre 115 bhp unit, two 20V 1.8 litre turbo units which develop 150 bhp and 180 bhp, or two 1.9 litre TDI PD units which develop 130 bhp and 150 bhp.

The Sport also provides an air of exclusivity, thanks to the luxurious equipment fitted as standard. The exterior features elegant 6½" x 16 'Le Castellet' alloy wheels with 205/55 tyres and front fog lights mounted within the headlight units. On the inside, standard items include front sports seats, with height and

lumbar support, upholstered in 'Tara' velour, front and rear carpet mats, walnut wood inserts in the centre console, gear knob*, ashtray lid and interior door handles, and electronic climate control air conditioning.

* Leather on automatics.

The Bora V5.

Specify the Bora with a V5 engine and you get distinctive 6½" x 16 'Pau' alloy wheels with 205/55 tyres and an impressive 170 bhp.

Model shown is the Bora Sport manual with 'Tara' velour upholstery.



Distinctive 16" 'Pau' alloy wheels with 205/55 tyres are standard on V5 models.



A dash-mounted 6 CD autchanger is standard on the Sport, V5 and V6 4MOTION.

The powerful and smooth

Bora V6 4MOTION.



Please note that the headlight washers and sunroof are optional at extra cost.



Model shown is the Bora V6 4MOTION. The navigation/radio system, cruise control and leather upholstery with 'Recaro' heated front seats are optional at extra cost.



The 4 valves per cylinder V6 engine.

The Bora V6 4MOTION.

The Bora V6 4MOTION features a V6 engine which is a development of the unique VR6 engine, but now with 4 valves per cylinder and producing 204 bhp. The V6 4MOTION has a 6 speed manual gearbox and an intelligent four wheel drive system which includes an electronically and hydraulically controlled 'Haldex' coupling mounted in the rear axle. (The glossary on page 74 contains a more detailed explanation.)

The standard specification is the same as the V5, but to make the V6 4MOTION unique it features sports suspension, exclusive 6 1/2 x 16 'Brands Hatch' alloy wheels with 205/55 R16 tyres (steel temporary space-saver spare wheel), chrome twin exhaust tailpipe and a 4MOTION gear knob.



Electronic climate control is standard on the Sport, V5 and V6 4MOTION. The navigation/radio system is an option at extra cost.



Naturally, a *quality* car
deserves quality options.

Alloy wheels

Whether you choose the 'Jarama' which is optional for the Bora S, or the BBS 'RS2' for the Sport, they are all designed and built for performance. Please note the optional alloy wheel packs contain four alloy wheels and a steel spare wheel.



Four stylish 6J x 15 'Jarama' alloy wheels with 195/65 tyres and anti-theft wheel bolts. Standard on ST (not 1.8T 180 bhp) and optional on S models.



Four classic 6½J x 16 BBS 'RS2' alloy wheels with 205/55 tyres and anti-theft wheel bolts. Optional on Sport models.



Four sporty 7J x 17 'Longbeach' alloy wheels with 225/45 tyres feature as part of the Sports pack.

Sports pack

You can further enhance the appearance and handling of Sport and 'V' range by specifying the Sports pack with four 17 inch 'Longbeach' alloy wheels (plus a temporary steel spare wheel) complete with sports suspension.



Preparing your car to carry children needn't be a lengthy operation. Not available in conjunction with optional leather upholstery or leather 'Recaro' sports seats.

Integrated child seats

By simply folding back and raising the normal seat, a child can use the normal three-point seat belts. It provides effective protection and is positioned in seconds.

The integrated child seat is suitable for children classified by ECE-R¹ 44/03 standard in Group 1 (9-18 kg), Group 2 (15-25 kg) and Group 3 (22-36 kg).

We recommend, however, that the child seat only be used for children as of the age of 2 years.

Please note that children in Group 1 require a special restraining table which has been approved for use with the integrated child seat and which is available from your Volkswagen retailer (see page 55).

¹Economic Commission of Europe – Regulation.

Cruise control

Ideal for long motorway journeys, cruise control allows a speed to be programmed that will be automatically maintained. Activating the brake or clutch will deactivate the cruise control, but the last stored speed will be held in the memory, allowing you to resume cruising speed at the touch of a button. Cruise control is standard on SE, in conjunction with the multifunction steering wheel, and optional on all others.



Cruise control provides a more relaxed drive on longer journeys.



As an optional extra, two curtain airbags can be fitted to provide added protection for both front and rear occupants.

Multifunction steering wheel

The multifunction steering wheel with cruise control allows you to operate the cruise control and radio controls without taking your hands off the wheel. For a comfortable grip, it is trimmed in leather. The multifunction steering wheel is standard on SE, and optional on Sport, V5 and V6 4MOTION.

Parking sensor

This ingenious system makes parking in the smallest spaces so much easier. Sensors in the rear bumper operate by ultrasound and emit a bleep. As objects get closer the sound signal becomes more frequent.

Curtain airbags

As an optional extra, two additional curtain airbags are available to cushion both front and rear seat occupants. These airbags are situated overhead and cover the front and rear side windows to provide added protection around the head.

The Winter pack

When it's cold and wet outside, the optional Winter pack will help provide some relief. The pack consists of headlight washers, heated windscreen washer jets, heated front seats and low washer fluid warning.



The powerful water jet from the headlight washers effectively clears dirt to maintain visibility.



Included in the Winter pack and standard with leather upholstery, heated front seats provide greater comfort through the coldest months.



Radio and satellite navigation system with colour screen.



Navigation, radio and CD player in one unit with monochrome screen.

Navigation systems

The combined satellite navigation and radio unit, with colour screen, offers route guidance via the display of road maps, route information, spoken instructions and visual arrow symbols in the centre of the instrument panel. Radio functions and control of the 6 CD boot-mounted autochanger are also provided. The navigation CD reader is mounted in the top of the unit. Please note that the unit will only accept the navigation CDs and NOT audio CDs. Available as a factory-fitted option, at extra cost, on all models except the S, ST and SE.

Alternatively, you can choose the monochrome navigation system, radio and CD player in one unit. Route guidance is supplied via arrow symbols in both the unit and a display in the centre of the instrument panel, together with audible recommendations. The CD slot can be used for music CDs when the navigation system is not in use. In addition, this system will also operate the Volkswagen 6 CD boot-mounted autochanger. The monochrome navigation system is available as a factory-fitted option, at extra cost, on all models except the S, ST and SE.

Please note the separate front-loading single CD player, dash-mounted 6 CD autochanger, DSP or navigation/radio system are not available in conjunction with each other.

The Digital Sound Processor

The optional Digital Sound Processor (DSP) can transform the 'Gamma' hi-fi system. The system features an external 4 channel 70 watt amplifier and 8 high performance speakers. DSP is fitted in line with the radio unit and processes all signals from the radio, cassette or CD.

The loudspeakers in a car are set at different distances from the listener. DSP smoothes out the subsequent imbalance, giving the impression of being 'in the heart of the music'.

In addition, DSP offers five digital room simulations. Whether it be clearly audible spoken words, reproduction of modern pop music, classical music in a concert hall, rock music at an open air festival or jazz in a club, all can be selected by the push of a button. Available on SE models and above.



Please note that DSP is only available in conjunction with the 'Gamma' radio/cassette, but not with dash-mounted 6 CD autochanger, front-loading single CD player or navigation systems.



On S and SE models you can choose as an option the front-loading single CD player. Standard on ST models.



The dash-mounted 6 CD autochanger can be added to either the 'Beta' or 'Gamma' units. Standard on Sport and 'V' range.

In-car hi-fi

The sound systems in the Bora have been tailored specifically for Volkswagen. Typical of Volkswagen, we have chosen high specification units that deliver perfect sound.

For uninterrupted listening pleasure, both units can be linked to a dash-mounted 6 CD autochanger. Standard on Sport, V5 and V6 4MOTION.

Accessories to *complement*

your Bora and your lifestyle.



Sports accessories

Whether for aesthetic appeal or greater practicality, the Volkswagen accessories range could have the answer for those who desire something extra.

All items are specifically designed for Volkswagen models to ensure a harmonious fit.

If you seek maximum performance from your Volkswagen, the sports range is sure to appeal.



Rear boot spoiler.
Part No. 1J5 071 646 O 9AX

As a distinctive addition, you can choose from a range of alloy wheels, each one precision engineered to lightweight specifications. Our anti-theft wheel bolts (Part No. ZGB 1J0 071 591) will keep them securely in place.

The sports range also includes wooden (1.6 - Part No. 1J0 064 225 A, 2.0/V5/TDI - Part No. 1J0 064 225 B)

or aluminium-look gear knobs* (1.6 - Part No. 1J0 064 226 A, 2.0/V5/TDI - Part No. 1J0 064 226 B) to further personalise your Bora. All products in the range are manufactured to the highest quality assurance standards insisted on by Volkswagen.

* Not suitable for 6 speed gearbox.



5 Star Raceline 6J x 15.
Part No. 1J9 071 496 666
5 Star Raceline 6½J x 16.
Part No. 1J6 071 491 666



Rave 6½J x 16.
Part No. 1C0 071 491 666



Evolvo 7J x 17.
Part No. 1J6 071 492 666



Tocatta 7J x 17.
Part No. 1J0 071 492 666



Bobsy INTEGRAL.
(Used in conjunction with the integrated child seat.) Suitable for children of approximately 2 to 4 years or a weight of 13-18 kg.
Part No. 000 019 919 B



Bobsy G1 ISOFIX DUO.
The second generation of Isofix systems. The standardised fixing facility guarantees simple installation and ensures a firm connection between child seat and vehicle – your child is given optimum protection during every journey. Naturally the Isofix can be fastened with a three-point seat belt when changing vehicles. Suitable for children of approximately 8 months to 4 years or a weight of 9-18 kg.
Part No. 00V 019 909



Safe and secure

Volkswagen is at the industry forefront when it comes to safety and security. We are amongst the first manufacturers to fit the Isofix child safety system that holds the ISOFIX DUO child safety seat, through 2 position fixing points, to the vehicle's chassis. This not only ensures greater rigidity, but reduces the time to fit a child seat because there's no need for threading seat belts.

At Volkswagen we offer protection for the youngest members of your family, like the option of the factory-fitted integrated child seat. The Bobsy INTEGRAL extends the use of this child safety system to younger children with a weight of 13-18 kg. For greater flexibility, it can be used in either the left or right hand position.

There is also a complete range of child safety seats for use in rear and forward facing positions. Security is also high on the priority list, with maximum protection offered through advanced alarm systems.



Bobsy G3 booster seat with removable back. Suitable for children of approximately 4 to 12 years or for a weight of 17-36 kg.
Base Part No. 000 019 904 B
Sleep support Part No. 000 019 905 B



Should you be carrying a bike, the hydraulic bicycle lift is a useful asset. It effortlessly positions the bike in place and helps prevent any accidental damage to the bodywork. Suitable for 1 bike up to a weight of 20 kg.
Part No. 4D0 071 128 D

Practical travel solutions

For day-to-day needs or short-term travel requirements, there is an extensive range of touring accessories. The roof systems are typical of Volkswagen's attention to detail and have been wind tunnel tested to ensure handling and safety remain unaffected, whilst the quick release catches make fitment and removal a fast and simple process.

A unique feature of the roof bars (Part No. 1J5 071 126 A) is the method of attachment to the car itself. Underneath the standard rubber trim guttering are pre-fitted sockets into which the roof bars fix. This removes the need for any additional fixing holes or, indeed, the risk of scratching the paintwork from any external mountings.



There is a range of attachments for the roof bars including a luggage rack (Part No. 191 071 130 F), lockable bicycle holder (Part No. 6Q0 071 128), two different size roof boxes, a surfboard holder and two ski/snowboard holders suitable either for 4 pairs skis/2 boards (Part No. 3B0 071 129) or 6 pairs skis/4 boards (Part No. 3B0 071 129 C).

When not in use the towbar is easily removed for safe storage; there is also a choice of electrics available. Please consult your Volkswagen retailer for details. The roof box measures L1400 x W970 x H370 mm and has a capacity of 350 litres while the Davos roof box is suitable for skis and luggage.



Ski/Snowboard holder.
Maximum 6 pairs skis/4 snowboards.
Part No. 3B0 071 129 C



Roof box – 350 litres.
Part No. 00H 071 350 S
Davos ski and luggage box is also available.
Part No. 000 071 300 A



Detachable towbar (excludes electrics).
Part No. 1J0 092 155*
Towbar electrics.
7-pin electrics. Part No. 1J0 055 203 GB
13-pin electrics. Part No. 1J0 055 204 GB

* Not suitable for 4MOTION.

Protection and car care

As a Volkswagen owner, we appreciate that you'll want to maintain your car in first-class condition.

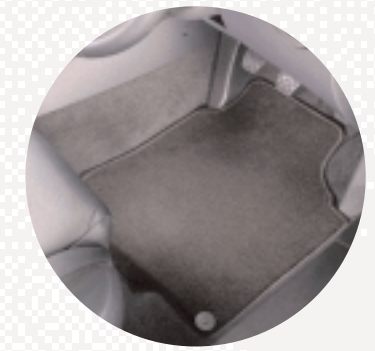
So to help restrict dirt and damage, you'll find a wide selection of products that offer the highest level of protection.

The contoured mudflaps (Front Part No. 1J0 075 111 A, Rear Part No. 1J5 075 101 A) designed for individual models to ensure the optimum position with ease of fitment.

In addition, the rubber mats (Front Part No. 1J2 061 501 A 041, Rear Part No. 1J0 061 511 041) carpet mats and loadliners are a fast and effective way to remove unwanted mud and stones from your car's interior and, in the process, prevent wear and tear to the original carpets.



Flexible loadliner.
Part No. 1J5 061 160 (not 4MOTION)
Part No. 1J5 061 161 (4MOTION only)



Carpet mat sets.
Standard. Part No. Depends upon colour
Luxury. Part No. Depends upon colour

Serious hi-fi

Volkswagen offers an audio range for the Bora that includes a higher specification radio/cassette player for the S model. You can also choose additional speakers to enhance acoustics, CD autochangers for uninterrupted listening pleasure and a combination telephone/radio aerial (Part No. 3B0 051 506 A).

With increasingly sophisticated electronics, it's worth remembering that, when fitted by your Volkswagen retailer, you are assured of compatibility with vehicle systems and quality of instalment.



Boot-mounted 6 CD autochanger.
(For use with 'Beta' and 'Gamma' stereo audio units.)
Part No. 1J5 057 111 A

There are 16 million colours

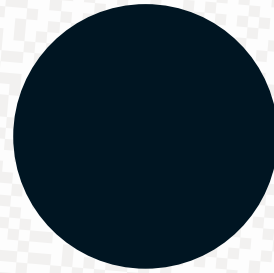
in the world. Here are some

of the more *interesting* shades.



Exterior paintwork.

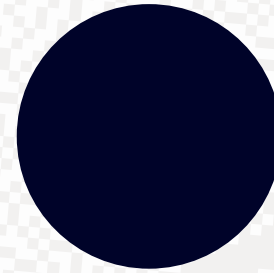
Non-Metallic paint



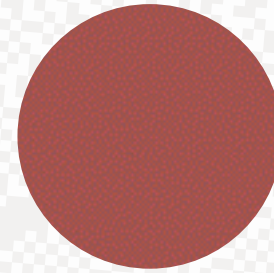
Black (A1)



Candy White (B4)

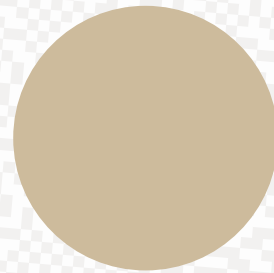


Ink Blue (D3)

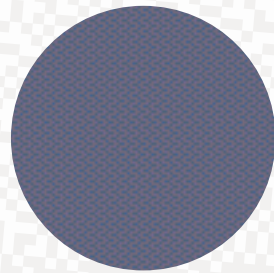


Tornado Red (G2)

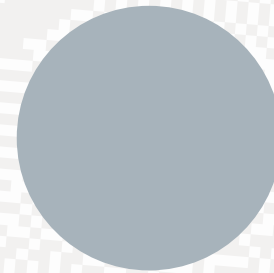
Metallic paint*



Desert Beige (1W)

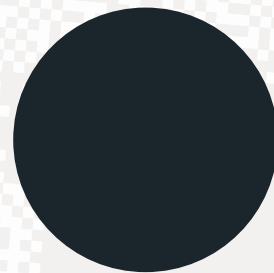


Raven Blue (5Z)

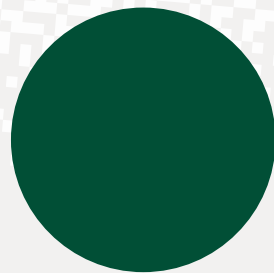


Reflex Silver (8E)

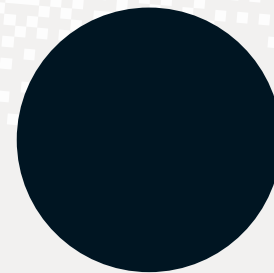
Pearl Effect paint*



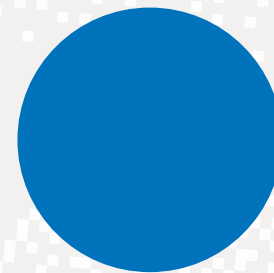
Grey Anthracite (F8)



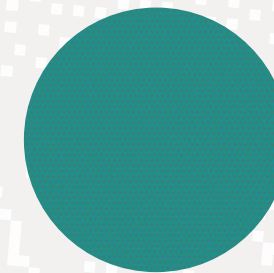
Bright Green (T3)



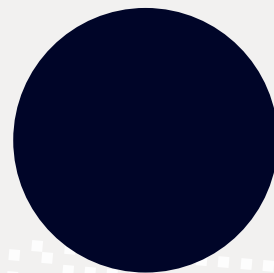
Diamond Black (Z4)



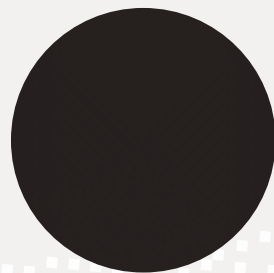
Jazz Blue (1D)



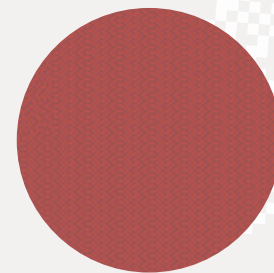
Green Collection (6F)



Indigo Blue (7D)



Oceanic Green (8Z)



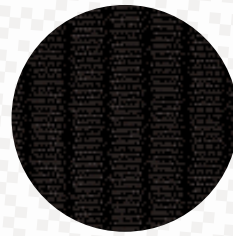
Berry Red (9W)

Please note: The print process does not allow for exact reproduction of the paint colours. For further details, please contact your Volkswagen retailer.

* Metallic and Pearl Effect paint are optional at extra cost.

A choice of upholstery.

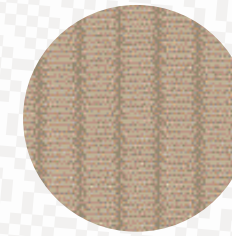
S
'Line' cloth



Black (FP)



Flannel Grey (FU)

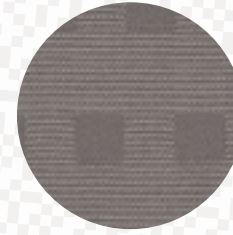


Beige (FZ)

ST
'Primero' flock



Black (RW)



Flannel Grey (RX)

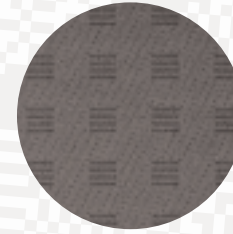


Beige (RY)

SE
'Motion' velour



Black (CM)

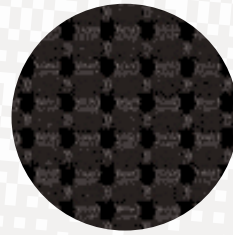


Grey (CR)

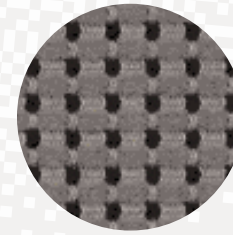


Beige (CZ)

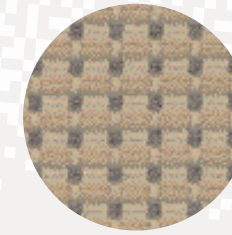
Sport, V5, V6 4MOTION
'Tara' velour



Black (HT)

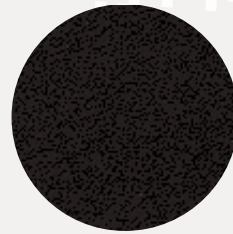


Flannel Grey (HU)

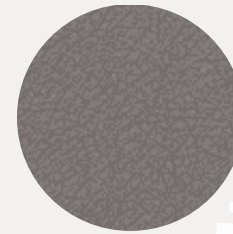


Beige (HW)

ST, SE
Optional leather
Sports seats



Black (VA)

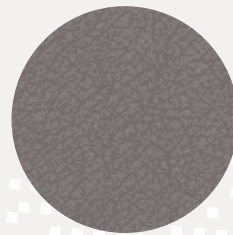


Flannel Grey (VE)

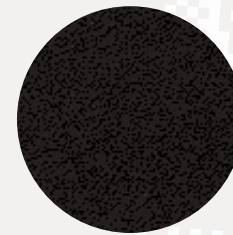


Beige (VH)

Sport, V5, V6 4MOTION
Optional leather
Sports seats/'Recaro' sports seats



Flannel Grey (VR)



Black (VV)



Beige (VW)

Sport, V5, V6 4MOTION
Optional Alcantara



Black (JJ)

Please note: The print process does not allow for exact reproduction of the upholstery colours. For further details, please contact your Volkswagen retailer.

Colour combinations.

	Seat upholstery	Carpets	Dashboard	Black A1	Candy White B4	Ink Blue D3	Tornado Red G2	Desert Beige Metallic 1W*	Raven Blue Metallic 5Z*	Reflex Silver Metallic 8E*	Grey Anthracite Pearl Effect F8*	Bright Green Pearl Effect T3*	Diamond Black Pearl Effect Z4*	Jazz Blue Pearl Effect 1D*	Green Collection Pearl Effect 6F*	Indigo Blue Pearl Effect 7D*	Oceanic Green Pearl Effect 8Z*	Berry Red Pearl Effect 9W*	
S – ‘Line’ cloth																			
Black	FP	Black	Black	●	●	●	●	●	●	●	●	●	●	●	●	●	●	●	●
Flannel Grey	FU	Flannel Grey	Black/Flannel Grey	●	●	●	●	●	●	●	●	●	●	●	●	●	●	●	●
Beige	FZ	Beige	Beige/Black	●	●	●	-	●	●	-	●	●	●	●	●	●	●	●	●
ST – ‘Primero’ flock																			
Black	RW	Black	Black	●	●	●	●	●	●	●	●	●	●	●	●	●	●	●	●
Flannel Grey	RX	Grey	Black/Grey	●	●	●	●	●	●	●	●	●	●	●	●	●	●	●	●
Beige	RY	Beige	Black/Beige	●	●	●	-	●	●	-	●	●	●	●	●	●	●	●	●
SE – ‘Motion’ velour																			
Black	CM	Black	Black	●	●	●	●	●	●	●	●	●	●	●	●	●	●	●	●
Grey	CR	Grey	Black/Grey	●	●	●	●	●	●	●	●	●	●	●	●	●	●	●	●
Beige	CZ	Beige	Black/Beige	●	●	●	-	●	●	-	●	●	●	●	●	●	●	●	●
Sport, V5, V6 4MOTION – ‘Tara’ velour																			
Black	HT	Black	Black	●	●	●	●	●	●	●	●	●	●	●	●	●	●	●	●
Flannel Grey	HU	Flannel Grey	Black/Flannel Grey	●	●	●	●	●	●	●	●	●	●	●	●	●	●	●	●
Beige	HW	Beige	Beige/Black	●	●	●	-	●	●	-	●	●	●	●	●	●	●	●	●
ST, SE – Optional leather – Sports seats																			
Black	VA	Black	Black/Black	○	○	○	○	○	○	○	○	○	○	○	○	○	○	○	○
Flannel Grey	VE	Flannel Grey	Black/Flannel Grey	○	○	○	○	-	○	○	○	○	○	○	○	○	○	○	○
Beige	VH	Beige	Black/Beige	○	○	○	-	○	○	-	○	○	○	○	○	○	○	○	○
Sport, V5, V6 4MOTION – Optional leather – Sports seats/‘Recaro’ sports seats																			
Flannel Grey	VR	Flannel Grey	Black/Flannel Grey	○	○	○	○	-	○	○	○	○	○	○	○	○	○	○	○
Black	VV	Black	Black/Black	○	○	○	○	○	○	○	○	○	○	○	○	○	○	○	○
Beige	VW	Beige	Black/Beige	○	○	○	-	○	○	-	○	○	○	○	○	○	○	○	○
Sport, V5, V6 4MOTION – Optional Alcantara																			
Black	JJ	Black	Black/Black	○	○	○	○	-	○	○	○	○	○	○	○	○	○	○	○

● Standard ○ Optional at extra cost - Not available

Please note:

* Metallic and Pearl Effect paint are optional at extra cost.

Technical specification.

	SE 1.6 litre 102 bhp (Automatic only)	S, SE 1.6 litre 105 bhp	S, SE, Sport 2.0 litre 115 bhp	ST, Sport 1.8 litre Turbo 150 bhp	ST, Sport 1.8 litre Turbo 180 bhp	V5 2.3 litre 170 bhp	V6 4MOTION 2.8 litre 204 bhp		
Engine:	Front transversely mounted 4 cylinder in-line – petrol, alloy cylinder block and cylinder head with single overhead camshaft (Double overhead camshaft on 1.6 litre 105 bhp engine)			Front transversely mounted 4 cylinder in-line – petrol, alloy cylinder block and cylinder head with double overhead camshaft		Front transversely mounted 5/6 cylinder 15° ‘V’ – petrol, cast iron cylinder block, alloy cylinder head with single overhead camshaft per bank			
Number of valves	2 per cylinder	4 per cylinder	2 per cylinder	5 per cylinder	5 per cylinder	4 per cylinder	4 per cylinder		
Cubic capacity, ltrs/cc	1.6/1595	1.6/1598	2.0/1984	1.8/1781	1.8/1781	2.3/2324	2.8/2792		
Bore/stroke, mm	81.0/77.4	76.5/86.9	82.5/92.8	81.0/86.4	81.0/86.4	81.0/90.2	81.0/90.2		
Max. output, bhp/kw	102/75	105/77	115/85	150/110	180/132	170/125	204/150		
at rpm	5600	5700	5200	5700	5500	6200	6200		
Max. torque, lbs.ft/Nm	109/148	109/148	125/170	155/210	173/235	162/220	199/270		
at rpm	3800	4500	2400	1750-4600	1950-5000	3200	3200		
Compression ratio	10.3 : 1	11.5 : 1	10.5 : 1	9.5 : 1	9.5 : 1	10.8 : 1	10.5 : 1		
Induction	Electronic multipoint injection, variable inlet manifold	Electronic multipoint injection, single cylinder injection	Electronic multipoint injection, single cylinder injection	Electronic multipoint injection, single cylinder injection	Electronic multipoint injection, single cylinder injection	Electronic multipoint injection, variable inlet manifold	Electronic multipoint injection, variable inlet manifold		
Ignition	Electronic	Electronic	Electronic	Electronic	Electronic	Electronic	Electronic		
Exhaust emission control	Catalytic converter lambda control	Catalytic converter lambda control	Catalytic converter lambda control	Catalytic converter lambda control	Catalytic converter lambda control	Catalytic converter lambda control	Catalytic converter lambda control		
Fuel grade, minimum	Premium 95 RON unleaded	Premium 95 RON unleaded	Premium 95 RON unleaded	Premium 95 RON unleaded	Premium 95 RON unleaded	Premium 95 RON unleaded	Premium 95 RON unleaded		
Battery, V/A (Ah)	12/280 (60)	12/220 (44)	12/220 (44)	12/220 (44)	12/280 (60)	12/280 (60)	12/280 (60)		
Alternator, amps	90	90	90	90	90	70	70		
Transmission:	Front wheel drive 4 spd auto	Front wheel drive 5 spd man	Front wheel drive 5 spd man	Front wheel drive 5 spd man	Front wheel drive 6 spd man	Front wheel drive 5 spd man	5 spd auto tiptronic	Four wheel drive 6 spd man	
Performance:	Top speed, mph (km/h) (where law permits)	115 (185)	119 (192)	121 (195)	134 (216)	142 (228)	139 (224)	137 (220)	146 (235)
Acceleration, secs 0 - 62 mph	12.8	11.3	11.0	8.9	8.2	8.5	9.2	7.4	
ABI insurance group	6	6	7, 8, 8	13	TBA	16	16	17	
Environmental information:	Official fuel consumption according to EU Directive 99/94, mpg/ltr per 100 km								
Urban	24.6/11.5	29.7/9.5	24.8/11.4	26.2/10.8	23.7/11.9	22.4/12.6	20.3/13.9	17.9/15.8	
Extra-urban	44.1/6.4	49.6/5.7	44.8/6.3	44.8/6.3	42.2/6.7	41.5/6.8	38.2/7.4	34.0/8.3	
Combined	34.0/8.3	39.8/7.1	34.4/8.2	35.3/8.0	32.8/8.6	31.7/8.9	28.8/9.8	25.4/11.1	
Fuel tank capacity, galls/ltrs	12.0/55	12.0/55	12.0/55	12.0/55	12.0/55	12.0/55	12.0/55	13.8/63	
Official CO ₂ emission, g/km*	199	170	197	192	206	214	235	266	
Noise, dB	67	71	72	71	73	72	73	74	

* Please see page 77 for further information on CO₂ emissions.

Specifications subject to change without notice. Information correct as at 1 August 2002. Please note: All data subject to manufacturer's tolerances.

Technical specification.

	SE 1.6 litre 102 bhp (Automatic only)	S, SE 1.6 litre 105 bhp	S, SE, Sport 2.0 litre 115 bhp	ST, Sport 1.8 litre Turbo 150 bhp	ST, Sport 1.8 litre Turbo 180 bhp	V5 2.3 litre 170 bhp	V6 4MOTION 2.8 litre 204 bhp		
Running gear:									
Front axle	Independent, McPherson struts and coil springs. Anti-roll bar Track stabilising steering geometry			Independent, McPherson struts and coil springs. Anti-roll bar Track stabilising steering geometry					
Rear axle	Torsion beam trailing arm with track-correcting bearings. Anti-roll bar			Torsion beam trailing arm with track-correcting bearings (multilink on V6 4MOTION only). Anti-roll bar					
Steering	Power-assisted, maintenance-free rack and pinion. Safety steering column			Power-assisted, maintenance-free rack and pinion. Safety steering column					
Brakes system	ABS with EBD. Diagonally split circuits with ESP. Servo assisted			ABS with EBD. Diagonally split circuits with ESP. Servo assisted. Load sensitive brake pressure regulator					
Front	Ventilated discs	Ventilated discs	Ventilated discs	Ventilated discs	Ventilated discs	Ventilated discs	Ventilated discs		
Rear	Discs	Discs	Discs	Discs	Discs	Discs	Discs		
Turning circle, ft/m	35.8/10.9	35.8/10.9	35.8/10.9	35.8/10.9	35.8/10.9	35.8/10.9	35.8/10.9		
Wheels and tyres:									
Wheel size	6½J x 16	6J x 15 ¹	6J x 15 ¹	6J x 15 ¹	6½J x 16	6½J x 16	6½J x 16		6½J x 16
Wheel type	Alloy 'Le Castellet'	Steel ¹	Steel ¹	Alloy 'Jarama' ¹	Alloy 'Le Castellet'	Alloy 'Pau'	Alloy 'Pau'		Alloy 'Brands Hatch'
Tyre size	205/55 R16W	195/65 R15V ¹	195/65 R15V ¹	195/65 R15V ¹	205/55 R16W	205/55 R16W	205/55 R16W		205/55 R16W
Spare wheel	Full size steel	Full size steel	Full size steel	Full size steel	Full size steel	Full size steel	Full size steel		Temporary space-saver
Weights, lbs/kgs:									
	4 spd auto	5 spd man	5 spd man	5 spd man	6 spd man	5 spd man	5 spd auto tiptronic	6 spd man	
Unladen weight†	3030/1374	2999/1360	3036/1377	3061/1388	3164/1435	3160/1433	3257/1477	3462/1570	
Gross vehicle weight	3925/1780	3881/1760	3925/1780	3947/1790	4057/1840	4057/1840	4145/1880	4344/1970	
Payload†	895/406	882/400	889/403	886/402	893/405	897/407	889/403	882/400	
Axle load limit: Front	2007/910	1962/890	2007/910	2051/930	2161/980	2161/980	2249/1020	2249/1020	
Rear	2051/930	2051/930	2051/930	2051/930	2051/930	2051/930	2051/930	2271/1030	
Trailer load limits, lbs/kgs:									
Braked 12% incline	2646/1200	2646/1200	3087/1400	2867/1300	2867/1300	3308/1500	3528/1600		
Unbraked	1323/600	1323/600	1323/600	1323/600	1323/600	1433/650	1544/700		
Towbar load limit	165/75	165/75	165/75	165/75	165/75	165/75	165/75		
Max. roof load	165/75	165/75	165/75	165/75	165/75	165/75	165/75		
Max. luggage capacity, cu.ft (litres):									
	VDA measuring method using 200 x 100 x 50 mm blocks			VDA measuring method using 200 x 100 x 50 mm blocks					
With rear seat upright	16.1 (455)	16.1 (455)	16.1 (455)	16.1 (455)	16.1 (455)	16.1 (455)	12.0 (340)		
With rear seat folded	27.7 (785)	27.7 (785)	27.7 (785)	27.7 (785)	27.7 (785)	27.7 (785)	23.7 (670)		

¹ SE and Sport models have 6½J x 16 'Le Castellet' alloy wheels with 205/55 R16W tyres and anti-theft wheel bolts.

† Figures are calculated in accordance with manufacturer's criteria.

Specifications subject to change without notice. Information correct as at 1 August 2002. Please note: All data subject to manufacturer's tolerances.

Technical specification.

	S, SE		ST, SE, Sport		Sport
	1.9 TDI PD 100 bhp		1.9 TDI PD 130 bhp		1.9 TDI PD 150 bhp
Engine:	<i>Front transversely mounted, 4 cylinder in-line – diesel, cast iron cylinder block, alloy cylinder head with single overhead camshaft</i>				
Number of valves	2 per cylinder		2 per cylinder		2 per cylinder
Cubic capacity, ltrs/cc	1.9/1896		1.9/1896		1.9/1896
Bore/stroke, mm	79.5/95.5		79.5/95.5		79.5/95.5
Max. output, bhp/kw	100/74		130/96		150/110
at rpm	4000		4000		4000
Max. torque, lbs.ft/Nm	177/240		228/310		236/320
at rpm	1800		1900		1900
Compression ratio	19.0 : 1		19.0 : 1		18.5 : 1
Induction	<i>Direct injection – with unit injectors, turbocharged with intercooler</i>		<i>Direct injection – with unit injectors, turbocharged with intercooler</i>		<i>Direct injection – with unit injectors, turbocharged with intercooler</i>
Exhaust emission control	Catalytic converter		Catalytic converter		Catalytic converter
Fuel grade, minimum	Diesel		Diesel		Diesel
Battery, V/A (Ah)	12/340 (70)	12/380 (80)	12/380 (80)	12/380 (80)	12/340 (70)
Alternator, amps	120	70	120	70	120

	S, SE		ST, SE, Sport		Sport
	1.9 TDI PD 100 bhp		1.9 TDI PD 130 bhp		1.9 TDI PD 150 bhp
Transmission:	<i>Front wheel drive</i>				
Gearbox	5 spd man 5 spd auto tiptronic ¹		6 spd man 5 spd auto tiptronic		6 spd man

	S, SE		ST, SE, Sport		Sport
	1.9 TDI PD 100 bhp		1.9 TDI PD 130 bhp		1.9 TDI PD 150 bhp
Performance:	<i>Top speed, mph (km/h)</i>				
(where law permits)	117 (188)	115 (185)	127 (205)	126 (202)	134 (216)
Acceleration, secs 0 - 62 mph	12.1	13.5	10.1	10.9	9.0
ABI insurance group	6, 8	8	8, 8, 13	8, 8, 13	13

	S, SE		ST, SE, Sport		Sport
	1.9 TDI PD 100 bhp		1.9 TDI PD 130 bhp		1.9 TDI PD 150 bhp
Environmental information:	<i>Official fuel consumption according to EU Directive 99/94, mpg/ltr per 100 km</i>				
Urban	41.5/6.8	32.1/8.8	39.2/7.2	31.0/9.1	38.7/7.3
Extra-urban	64.2/4.4	53.3/5.3	61.4/4.6	54.3/5.2	62.8/4.5
Combined	53.3/5.3	42.8/6.6	51.4/5.5	42.8/6.6	51.4/5.5
Fuel tank capacity, galls/ltrs	12.0/55	12.0/55	12.0/55	12.0/55	12.0/55
Official CO ₂ emission, g/km*	143	178	149	178	149
Noise, dB	74	69	72	72	74

¹ 5 speed auto tiptronic is not available on S models.

² SE and Sport models have 6½J x 16 'Le Castellet' alloy wheels with 205/55 R16W tyres and anti-theft wheel bolts.

* Please see page 77 for further information on CO₂ emissions.

[†] Figures are calculated in accordance with manufacturer's criteria.

	S, SE		ST, SE, Sport		Sport
	1.9 TDI PD 100 bhp		1.9 TDI PD 130 bhp		1.9 TDI PD 150 bhp
Running gear:	<i>Independent, McPherson struts and coil springs. Anti-roll bar. Track stabilising steering geometry</i>				
Front axle	<i>Independent, McPherson struts and coil springs. Anti-roll bar.</i>				
Rear axle	<i>Torsion beam trailing arm with track-correcting bearings. Anti-roll bar</i>				
Steering	<i>Power-assisted, maintenance-free rack and pinion. Safety steering column</i>				
Brakes system	<i>ABS with EBD. Diagonally split circuits with ESP. Servo assisted. Load sensitive brake pressure regulator</i>				
Front	Ventilated discs	Ventilated discs	Ventilated discs	Ventilated discs	Ventilated discs
Rear	Discs	Discs	Discs	Discs	Discs
Turning circle, ft/m	35.8/10.9	35.8/10.9	35.8/10.9	35.8/10.9	35.8/10.9

	S, SE		ST, SE, Sport		Sport
	1.9 TDI PD 100 bhp		1.9 TDI PD 130 bhp		1.9 TDI PD 150 bhp
Wheels and tyres:	<i>6J x 15²</i>				
Wheel size	6J x 15 ²	6J x 15 ²	6J x 15 ²	6½J x 16	6½J x 16
Wheel type	Steel ²	Alloy 'Jarama' ²	Alloy 'Jarama' ²	Alloy 'Le Castellet'	Alloy 'Le Castellet'
Tyre size	195/65 R15V ²	195/65 R15V ²	195/65 R15V ²	205/55 R16W	205/55 R16W
Spare wheel	Full size steel	Full size steel	Full size steel	Full size steel	Full size steel

	S, SE		ST, SE, Sport		Sport
	1.9 TDI PD 100 bhp		1.9 TDI PD 130 bhp		1.9 TDI PD 150 bhp
Weights, lbs/kgs:	5 spd man 5 spd auto tiptronic ¹		6 spd man 5 spd auto tiptronic		6 spd man
Unladen weight [†]	3147/1427	3266/1481	3175/1440	3277/1486	3180/1442
Gross vehicle weight	4035/1830	4167/1890	4079/1850	4167/1890	4079/1850
Payload [†]	889/403	902/409	904/410	891/404	900/408
Axle load limit: Front	2117/960	2249/1020	2161/980	2249/1020	2161/980
Rear	2051/930	2051/930	2051/930	2051/930	2051/930

	S, SE		ST, SE, Sport		Sport
	1.9 TDI PD 100 bhp		1.9 TDI PD 130 bhp		1.9 TDI PD 150 bhp
Trailer load limits, lbs/kgs:	<i>Braked 12% incline</i>				
Braked 12% incline	2867/1300	3087/1400	2867/1300	3087/1400	3087/1400
Unbraked	1323/600	1323/600	1323/600	1323/600	1323/600
Towbar load limit	165/75	165/75	165/75	165/75	165/75
Max. roof load	165/75	165/75	165/75	165/75	165/75

	S, SE		ST, SE, Sport		Sport
	1.9 TDI PD 100 bhp		1.9 TDI PD 130 bhp		1.9 TDI PD 150 bhp
Max. luggage capacity, cu.ft (litres):	<i>VDA measuring method using 200 x 100 x 50 mm blocks</i>				
With rear seat upright	16.1 (455)	16.1 (455)	16.1 (455)	16.1 (455)	16.1 (455)
With rear seat folded	27.7 (785)	27.7 (785)	27.7 (785)	27.7 (785)	27.7 (785)

Specifications subject to change without notice. Information correct as at 1 August 2002. Please note: All data subject to manufacturer's tolerances.

Standard equipment.

Safety and Security:

	S	ST	SE	Sport	V5	V6 4MOTION
ABS: Anti-lock brakes	●	●	●	●	●	●
Airbags: Driver's, front passenger's and front seat side impact airbags	●	●	●	●	●	●
Alarm: With interior protection	●	●	●	●	●	●
Body: Fully galvanised with 12-year anti-corrosion warranty	●	●	●	●	●	●
Door side impact protection	●	●	●	●	●	●
Rigid safety cell with front and rear crumple zones	●	●	●	●	●	●
Central locking: With security protection	●	●	●	●	●	●
Radio wave remote control	●	●	●	●	●	●
Electronic engine immobiliser, coded transponder	●	●	●	●	●	●
ESP: Electronic Stabilisation Programme – includes EDL (Electronic Differential Lock) and ASR (Traction Control)	●	●	●	●	●	●
Head restraints: Front adjustable	●	●	●	●	●	●
Outer rear adjustable and removable	●	●	●	●	●	●
High level third brake light	●	●	●	●	●	●
Isofix child seat preparation for rear seat, outer positions	●	●	●	●	●	●
Lockable rear seat backrests	●	●	●	●	●	●
Seat belts: Front three-point height-adjustable seat belts with tensioners	●	●	●	●	●	●
Rear outer three-point seat belts	●	●	●	●	●	●
Rear centre static lap belt	●	●	●	●	●	●
Warning triangle, mounted in boot lid	●	●	●	●	●	●

Functional Equipment:

	S	ST	SE	Sport	V5	V6 4MOTION
Computer: Multifunction, single and total journey memories. Information given on: Driving time, average fuel consumption, distance driven, average speed and external temperature	●	●	●	●	●	●
Door mirrors: Electrically heated and adjustable, housing painted in body colour	●	●	●	●	●	●
Dust and pollen filter	●	●	●	●	●	●
Front fog lights, mounted in headlight units	○	○	○	●	●	●
Headlights: Electric height adjustment and warning buzzer for lights if left on	●	●	●	●	●	●
Combined headlight and fog light switch	●	●	●	●	●	●
Heated rear window	●	●	●	●	●	●
In-car entertainment: 'Beta' radio/cassette with CD changer control	●	-	-	-	-	-
4 digit security code with flashing LED. 2 x 20 watt output with FM/MW manual/seek tuning, RDS. Auto reverse mechanical tape deck. 4 speakers, front and detachable roof aerial	○	●	●	●	●	●
'Gamma' radio/cassette with CD changer control	○	●	●	●	●	●
4 digit security code with flashing LED. 4 x 20 watt output with FM/MW manual/seek tuning, RDS/EON. Logic tape deck with 'Dolby' and MSS Music Search System. GALA adjustable vehicle speed-responsive volume control. 8 speakers, 4 front 4 rear and detachable roof aerial	○	●	○	-	-	-
Front-loading single CD player	○	○	○	●	●	●
CD autochanger, 6 disc, dash-mounted	○	○	○	●	●	●
Multifunction steering wheel including cruise control	-	-	●	○	○	○
Power-assisted steering	●	●	●	●	●	●
Steering wheel: Height and reach adjustable	●	●	●	●	●	●
Windows: Electric front and rear	●	●	●	●	●	●
Wipers: 2 speed with wash/wipe and intermittent wipe with 4 position delay	●	●	●	●	●	●
Rain sensor and automatic dimming rear-view mirror	○	●	●	●	●	●

Interior Equipment and Styling:

	S	ST	SE	Sport	V5	V6 4MOTION
Carpet mats, front and rear¹	-	-	-	●	●	●
Cup holder: Front	-	●	●	●	●	●
Rear	-	○	○	●	●	●
Driver and passenger illuminated sun visors, third centre sun visor	●	●	●	●	●	●
Entry/warning light in front doors	●	●	●	●	●	●
Fuel filler flap: Electrically operated via switch on centre console	●	●	●	●	●	●
Heating: Air conditioning, manual	●	●	●	-	-	-
Air conditioning, electronic climate control	-	○	○	●	●	●
Instruments: Speedo & rev counter, electronic odometer and trip, service interval display, digital clock, fuel & temperature gauge, low fuel warning light, blue adjustable panel illumination	●	●	●	●	●	●
Interior lighting: With time delay, front and rear passenger reading lights	●	●	●	●	●	●
Load sill protection – stainless steel	●	●	●	●	●	●
Luggage compartment light and load restraining hooks	●	●	●	●	●	●
Seating: Front, driver's with height adjustment	●	-	-	-	-	-
Front, Sports seats with driver's height adjustment	-	●	-	-	-	-
Front, Comfort seats with height and lumbar adjustment	-	-	●	-	-	-
Front, Sports seats with height and lumbar adjustment	-	-	-	●	●	●
Front, centre adjustable armrest with storage compartment	-	-	●	●	●	●
Rear, backrest asymmetrically split with individual fold down facility	●	●	●	●	●	●
Rear seat centre armrest with storage compartment	●	●	●	●	●	●
Steering wheel: Three-spoke	●	-	-	-	-	-
Three-spoke, leather rimmed, leather gear knob (wood on Sport, V5 and V6) and handbrake grip	-	●	●	●	●	●
Storage: Glovebox with illumination, lockable	●	●	●	●	●	●
Front door pockets and front seat backrest storage pockets	●	●	●	●	●	●
Upholstery: 'Line' cloth	●	-	-	-	-	-
'Primero' flock	-	●	-	-	-	-
'Motion' velour	-	-	●	-	-	-
'Tara' velour	-	-	-	●	●	●
Vanity mirrors, illuminated on driver's and passenger's side	●	●	●	●	●	●
Aluminium inserts in centre console, ashtray lid and interior door handles	●	●	●	-	-	-
Walnut wood inserts in centre console, gear knob, ashtray lid and interior door handles	-	-	-	●	●	●
12V socket in luggage compartment	●	●	●	●	●	●

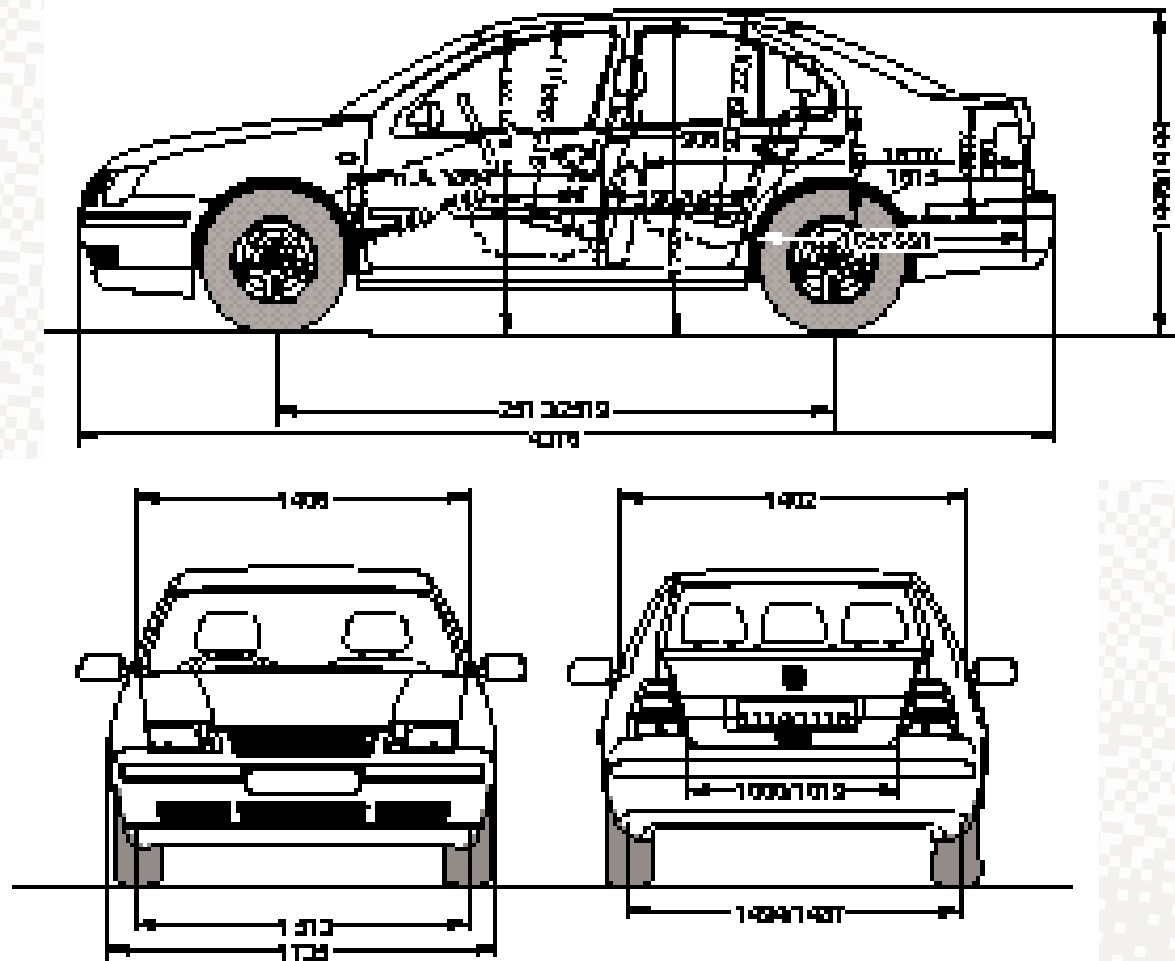
Exterior Equipment and Styling:

Body-coloured bumper strips and side bump strips	-	●	●	●	●	●
Heat insulating tinted glass	●	●	●	●	●	●
Wheels: 6J x 15 steel with full size wheel trims and 195/65 R15V tyres	●	-	-	-	-	-
6J x 15 'Jarama' alloy wheels with 195/65 R15V tyres and anti-theft wheel bolts	○	● ²	-	-	-	-
6½J x 16 'Le Castellet' alloy wheels with 205/55 R16W tyres and anti-theft wheel bolts	-	● ²	●	●	-	-
6½J x 16 'Pau' alloy wheels with 205/55 R16W tyres and anti-theft wheel bolts	-	-	-	-	●	-
6½J x 16 'Brands Hatch' alloy wheels with 205/55 R16W tyres and anti-theft wheel bolts	-	-	-	-	-	●
Full size steel spare wheel	●	●	●	●	●	-
Temporary space-saver spare wheel	-	-	-	-	-	●

¹ Please see your retailer for details of retailer supplied accessories.

² 6½J x 16 'Le Castellet' alloy wheels with 205/55 R16W tyres are standard on ST 1.8T 180 bhp only.

Exterior dimensions.



All figures in millimetres.

Specifications subject to change without notice. Information correct as at 1 August 2002. Please note: All data subject to manufacturer's tolerances.

Glossary.

ABS (Anti-lock Braking System)

The ABS system prevents the wheels from locking during heavy or emergency braking, enabling the vehicle to remain steerable. When braking, wheel speed sensors measure the road wheel speed and, should one or more wheels start to lock, the system reduces brake pressure to that wheel.

ASR (Anti-Slip Regulation)

ASR is a switchable traction control system that prevents the driven wheels from spinning under acceleration by reducing engine torque. It is active at all speeds.

EDL (Electronic Differential Lock)

EDL improves driving and steering characteristics when accelerating on road surfaces where each wheel has a different degree of traction. The system operates automatically and is combined with the ABS system. Using the ABS wheel sensors, EDL monitors the speed of the individual driving wheels.

When a difference in driving wheel speed is detected (i.e. when one wheel starts to spin due to differences in road surfaces, e.g. due to water or ice), the system brakes the spinning wheel, transferring engine power to the wheel with the best traction. EDL is active in forward and reverse.

Electronic Engine Immobiliser

Each car has a unique 'code transponder' fitted within the ignition key. When an attempt is made to start the engine, the engine management system interrogates the transponder and if the incorrect code is received (i.e. the wrong key is used), the engine will not run.

EON (Enhanced information concerning Other Networks)

Ensures that all traffic announcements within a traffic programme area are put through.

ESP (Electronic Stabilisation Programme)

ESP is designed to stabilise the dynamic handling response of the vehicle by counteracting any tendency towards oversteer

or understeer. The ESP constantly compares the actual movement of the vehicle with predetermined values and, according to the situation, ESP reacts by braking the outer front or inner rear wheel (according to direction of slip) and automatically adjusting the engine's output.

PD - 'Pumpe Düse' (Pump Injectors)

Very high pressure (max. = 2020 bar) injection system for new generation diesel engines. Significantly improves performance and economy due to better fuel atomisation.

RDS (Radio Data System)

The radio receiver uses additional data sent by the station to display the name of the station you are listening to and, given poor reception, it will retune the selected station to an alternative frequency if available. The system can also provide local traffic reports, interrupting the current station, CD or cassette if required.

4MOTION with 'Haldex' Coupling

4MOTION is a new four wheel system which includes the 'Haldex' coupling mounted in the rear axle. This 'Haldex' coupling contains an electronically and hydraulically controlled multiplate clutch that allows the engine power to be transferred to the wheels with the best traction. The coupling constantly regulates distribution of the drive between the front and rear axles and, because the system is electronically controlled, it gives the optimum traction for most driving situations. The advantages of the 4MOTION system are as follows:-

Front wheel drive characteristics, very quick response, no drive train 'wind-up' when parking, compatible with different tyre sizes (e.g. space-saver temporary spare wheel). Allows car to be towed with the axle raised off the ground.

Volkswagen service

for your *peace* of mind.

The Volkswagen Warranty.

3-year Warranty.

All Volkswagen Boras now come with a 3-year/60,000 miles warranty, which protects your car against the failure of most mechanical and electrical components due to manufacturing defects. This comprises a 2-year manufacturer's warranty with unlimited mileage plus a further 1-year/60,000 miles (whichever is soonest) Retailer Warranty. Should the mileage exceed 60,000 miles within the first two years, the manufacturer's 2-year warranty will still be valid. If an additional warranty for subsequent years or higher mileage is desired, it may be purchased from any authorised Volkswagen retailer; however, this additional warranty must be purchased before the mileage reaches 59,999. Cover is subject to the car being serviced and maintained at an authorised Volkswagen retailer according to the manufacturer's recommendations. Full details of the 3-year warranty are available from your Volkswagen retailer. This 3-year warranty is only available on vehicles purchased in the UK through an authorised Volkswagen retailer.

3-year Paint Warranty.

The paintwork of the Bora is covered against manufacturing defects for a period of 3 years. Naturally, the Bora must be cared for in compliance with the operating instructions which will be found in your vehicle handbook. Please consult your Volkswagen retailer for full warranty details.

12-year Body Protection Warranty.

The internal body sections and panels of the Boras are covered against rusting through from the inside for a period of 12 years. Naturally, the Bora must be cared for in compliance with the operating instructions. Please consult your Volkswagen retailer for full warranty details.

Service Intervals for Petrol and Diesel Engines.

Volkswagen has always been dedicated to protecting the environment. That's why many Volkswagen Boras now come with a choice of service schedules – Extended and Variable Service regimes.

Your vehicle will be set to operate on Extended Service, which means an oil service is required at 10,000 miles or 12 months (whichever is sooner) with a main service required at 20,000 miles or 24 months (whichever is sooner).

Some engines can also be set to run on Variable Service regime. Please contact your Volkswagen retailer for further information.

Approved Accessories.

A comprehensive range of accessories from alloy wheels to carpet mats is available to complement the factory-fitted option list. Volkswagen Approved accessories purchased from and fitted by your Volkswagen retailer at the point of vehicle sale will also benefit from the 3-year vehicle warranty.

Volkswagen Insurance.

Competitive insurance premiums are available to Volkswagen owners through Volkswagen Insurance Service (Great Britain) Limited. Volkswagen Insurance guarantee that all repair work is undertaken by an authorised Volkswagen retailer using only genuine parts, thus ensuring that the manufacturer's warranties remain in force. For a quotation, telephone Linkline on 0845 600 8006.

Extended Warranty.

You may purchase additional protection from your retailer or contact 0870 9000 115.

Volkswagen Finance.

Volkswagen Finance offers a dedicated service to meet the needs of both the business user and the private motorist. We can help you choose the right type of finance and will tailor the package to meet your specific requirements. Please consult your Volkswagen retailer for details.

Volkswagen Assistance.

Every new car is registered for Volkswagen Assistance for 1 year. This provides vehicle recovery in the unlikely event of a breakdown (subject to conditions). Volkswagen Assistance can also be purchased for subsequent years. For full details, please contact your Volkswagen retailer.

Tax Free Sales.

For full details, please contact your Volkswagen retailer.

CO₂ Emission.

The weight of a vehicle will influence the level of CO₂ emission it produces; as a result, vehicles with higher levels of specification and factory-fitted options may emit higher levels of CO₂.

The CO₂ figure quoted for each vehicle is the maximum possible. The unladen weight of the vehicle is calculated by range at the time of manufacture and the maximum possible CO₂ emission for that weight range is applied according to the Council Directive 80/1268EEC as amended by Commission Directive 1999/100/EC on the approximation of the laws of the member states relating to the carbon dioxide emissions and the fuel consumption of motor vehicles.

Please Note:

Some illustrations in this brochure do not necessarily reflect UK specifications. Consequently, controls and some items of equipment are positioned differently for the UK.

The specifications contained in this brochure are for information purposes only and are subject to change. If you require any specific feature, you must consult your Volkswagen retailer who is regularly updated with any change in specification. Please check model availability and full specification details with your Volkswagen retailer prior to ordering.

All vehicles fitted with accessories in this brochure have been registered.

The TDI® is a registered trademark of VOLKSWAGEN AG.

Note:

We would like to advise you that telephone calls to Volkswagen Customer Care may be monitored and recorded as part of our training and quality assurance processes. All our monitoring and recording processes meet Ofcom regulations.

To *experience* the Bora
for yourself, simply contact
your local Volkswagen retailer.

