



# QMEKK ENGINEERING PTE, LTD



📍 Ubi Avenue 1, #01-203, Singapore 400306

☎ +65 9446 2634, +65 8657 9285

🌐 [www.qmekk.com](http://www.qmekk.com)

✉ [sales@qmekk.com](mailto:sales@qmekk.com)

## SERVICES OFFERED

### Pump/Blower servicing & Overhauling



- Casing/ Impeller/ shaft rework
- Dynamic balancing
- Shaft alignment
- Bearing, seal and accessories replacement
- Hydrotesting
- Performance testing
- Painting as per client specifications
- Oil replacement etc



### Piping erection & commissioning

- Installation of new piping system
- Modification of existing piping's
- Pipe welding as per ASME Standards
- Installation and modification of metallic and non metallic piping's
- UPVC, PVC, CPVC, HDPE Piping works
- Repair, Installation and replacement of fittings, valves etc
- Painting as per client requirement

### Pipe & Structural welding



- Welding as per ASME standards
- Welding inspection for piping and supports
- Dimensional inspection
- Base plate and frame fabrication
- Skid works



### Painting

- Painting as per client requirements
- Blasting
- Powder coating
- Epoxy painting
- Chemical resistant painting
- Ceramic coating

### Inspection and maintenance



- Annual maintenance
- Operation maintenance
- Overall maintenance
- Plant testing and troubleshooting
- Inspection reports
- Technical advise
- Overall plant support for WTP, STP, ETP, Softner, UF, RO, Chemical plant, Refinery
- Filter press and maintenance



### Spares and accessories

- Pump overall spares
- Filters and membranes
- Filter cloths
- Pipes and fittings
- Valves
- Diffusers
- Agitator
- Gear box
- Pressure vessel
- Air receivers
- Compressor spares

## INDEX

S/No	Description	Model	PUMP TYPES	
1.1	Chemical process pump / Horizontal / Metallic / Non-Metallic / Surface	QCG1	ASME B73.1 Process Pump	Page 6
1.2		QCG2	Thermoplastic lined process pump	Page 6
1.3		QCG3	Thermoplastic close coupled pump	Page 6
1.4		QCG4	Solid Thermoplastic process pump	Page 6
1.5		QCG5	FRP process pump	Page 6
2.1	Magnetic drive sealless pump / Non metallic / Surface / Sump	QMD1	Magnetic sealless (Small range)	Page 7
2.2		QMD2	Magnetic sealless (High head)	Page 7
2.3		QMD3	Magnetic sealless (High flow)	Page 7
2.4		QMD4	Magnetic sealless (Plastic lined)	Page 7
2.5		QMD5	Magnetic sealless (Self Priming)	Page 7
3.1	Process pump / sump	QCS1	Process metallic cantilever pump	Page 8
3.2		QCS2	Process non clog cantilever pump	Page 8
3.3		QCS3	Process plastic cantilever pump	Page 8
3.4		QCS4	Process metallic self priming pump	Page 8
3.5		QCS5	Process plastic self priming pump	Page 8
4.1	Magnetic drive pump	QMM1	Magnetic drive (Thermoplastic lined)	Page 9
5.1	Vertical Inline	QCV1	Process vertical inline	Page 9
6.1	Paper & Pulp	QPP1	Non clog pump	Page 9
6.2		QPP2	Non clog – Medium consistency	Page 9
6.3		QPP3	Degassing self priming pump	Page 9
7.1	Solid handling / Abrasive slurry / surface	QAG1	Medium duty metal lined slurry pump	Page 10
7.2		QAG2	Medium duty rubber lined slurry pump	Page 10
7.3		QAG4	Heavy duty metal lined slurry pump	Page 10
7.4		QAG4	Heavy duty rubber lined slurry pump	Page 10
7.5		QAG5	Dredge pump	Page 10
8.1	Forth handling	QAF1	Froth pump	Page 11

9.1	Soild Handling / Abrasive Slurry Sump	QAS1	Self priming slurry pump	Page 11
9.2		QAS2	Cantilever slurry pump Metal	Page 11
9.3		QAS3	Cantilever slurry pump – Rubber	Page 11
9.4		QAS4	Submersible abrasive particle pump	Page 11
10.1	Solid Handling / Fibrous / Sump	QSF1	Sewage submersible pump	Page 12
10.2		QSF2	Cutter pump	Page 12
10.3		QSF3	Small range submersible pump	Page 12
10.4		QSF4	Submersible axial flow pump	Page 12
10.5		QSF5	Submersible mixed flow pump	Page 12
10.6		QSF6	Cantilever pump	Page 13
11.1	Sewage / Non solid / Sump	QST1	Turbine pump	Page 13
12.1	Axial & Mixed flow pump	QMX1	Mixed Flow pump	Page 13
12.2		QAX2	Horizontal axial flow pump	Page 13
12.3		QAX2	Vertical axial flow pump	Page 13
13.1	Air cooled pump	QHO1	Air cooled pump	Page 14
16.1	Multistage pump	QMS1	Multistage pump	Page 14
16.2		QMS2	Boiler feed pump	Page 14
17.1	Split case pump	QSC1	Split case pump	Page 14
17.2		QSC2	Multistage split case pump	Page 14
18.1	water pumps	WX series	Water pumps & RO pumps	Page 15
19.1	Fire pumps	FX series	Fire pumps & Systems	Page 15
20.1	Vacuum pumps	VX series	Vacuum pump	Page 15
21.1	Sanitary pumps	SX series	Sanitary pumps	Page 15
22.1	Blowers	BX	Blowers	Page 15
23.1	Positive displacement pumps		Positive displacement pumps	Page 15

## QMEKK ENGINEERING PTE, LTD





# CHEMICAL PROCESS PUMP / HORIZONTAL / METALLIC / NON METALLIC / SURFACE



ASME B73.1  
Process Pump

**QCG1**

Max 1400 m3/hr  
Max 200 m  
1" to 10" / DN 25 to DN 250  
ASME B73.1  
ASME / DIN  
Cartridge seal  
API 682  
50Hz / 60Hz

Carbon steel / 316 SS /  
Duplex SS/Alloy 20,  
Nickel / Hastelloy /  
Titanium



Thermoplastic lined  
process pump

**QCG2**

Max 398 m3/hr  
Max 100 m  
1" to 6" / DN 25 to DN150  
ISO 2858  
ASME / DIN  
Component seal ; Cartridge seal  
API 682  
50Hz / 60Hz

PVDF / FEP / PFA



Thermoplastic close  
coupled pump

**QCG3**

Max 80 m3/hr  
Max 60 m  
1" to 4" / DN 25 to DN 100  
ISO 2858  
ASME / DIN  
Component seal  
API 682  
50Hz / 60Hz

PP / GFPP



Solid Thermoplastic  
process pump

**QCG4**

Max 980 m3/hr  
Max 80 m  
1" to 10" / DN 25 to DN 250  
ISO 2858  
ASME / DIN  
Component seal  
API 682  
50Hz / 60 Hz

Armour : Grey cast iron  
Wetted parts:  
Polypropylene / High molecular  
weight Polyethylene / PVDF



FRP process pump

**QCG5**

Max 160 m3/hr  
Max 80 m  
1" to 4" / DN 25 to DN 100  
Manufacturer standard  
ASME / DIN  
Component seal  
API 682  
50Hz / 60Hz

Casing/Impeller : FRP  
Shaft: SS304 . SS316  
Shaft sleeve: SS-316 / Alloy-20 /  
Hastelloy C

- Flow rate
- Total head
- Bore
- Pump standard
- Flange standard
- Shaft sealing
- Flushing plan
- Cycle

- Material of construction

- Characteristics

- Compliance with ASME B73.1 / ISO 2858 standards
- Single stage overhung centrifugal pump
- Open / Semi open / Closed type impeller
- Clockwise rotation viewed from coupling end
- Oil lubricated
- Back pull out design for easy maintenance

- Applications

- Chemical
- Paper and pulp
- Mining and Minerals
- Power
- Oil and gas

- Cartridge seal for easy maintenance
- Single / Double mechanical seal based on application
- Mechanical seal flushing as per API 682 based on various applications
- Various material of construction available
- Constant level oiler
- Grease and oil mist bearings

- Industries





## MAGNETIC DRIVE SEALLESS PUMP / NON METALLIC / SURFACE / SUMP



Magnetic sealless  
(Small range)

**QMD1**

Max 13.2 m3/hr  
Max 20 m  
G3/4 to G1 ½  
N/A  
N/A  
50Hz / 60Hz

Glass Reinforced Polypropylene / Carbon Fibre Reinforced Polypropylene / Polytetrafluoroethylene / Carbon filled Ethylene tetra fluoro ethylene



Magnetic sealless  
(High head)

**QMD2**

Max 51.6 m3/hr  
Max 39 m  
DN25 to DN65  
N/A  
N/A  
50Hz / 60Hz

Glass Reinforced Polypropylene / Carbon Fibre Reinforced Polypropylene / Polytetrafluoroethylene / Carbon filled Ethylene tetra fluoro ethylene



Magnetic sealless  
(High flow)

**QMD3**

Max 75 m3/hr  
Max 17 m  
DN 65  
N/A  
N/A  
50Hz / 60Hz

Glass Reinforced Polypropylene / Carbon Fibre Reinforced Polypropylene / Polytetrafluoroethylene / Carbon filled Ethylene tetra fluoro ethylene



Magnetic sealless  
(Plastic lined)

**QMD4**

Max 51.6 m3/hr  
Max 40 m  
DN25 to DN65  
N/A  
N/A  
50Hz / 60 Hz

Armour : Cast iron  
Wetted parts:  
Carbon filled Ethylene tetra fluoro ethylene



Magnetic sealless  
(Self Priming)

**QMD5**

Max 48 m3/hr  
Max 22 m  
DN 40 to DN 75  
N/A  
N/A  
50Hz / 60Hz

Glass Reinforced Polypropylene / Carbon Fibre Reinforced Polypropylene / Polytetrafluoroethylene / Carbon filled Ethylene tetra fluoro ethylene

- Flow rate
- Total head
- Bore
- Shaft sealing
- Flushing plan
- Cycle

### Material of construction

### Characteristics

- Single stage leak proof magnetic sealless centrifugal pump
- Closed type impeller
- Clock wise rotation viewed from motor end
- Various material of construction available
- Zero leakage and total control of dangerous emission

### Applications

- Chemical (Transfer of chemicals to storage tanks etc)
- Paper and pulp (Sodium Hydroxide transfer ,Chemical feed in bleach plant etc)
- Mining (Transfer and circulation of electrolytic liquid etc)
- Power generation (Sea water , NaOCl transfer , Acid cleaning etc)
- Oil and gas

- Handle hazardous or volatile fluids
- Quick and easy installation and flushing line is not required
- Two parted shaft. Hence less mechanical load on shaft
- By eliminating seals magnetic seal-less pumps are the safest pump for chemical transfer.

### Industries





## PROCESS PUMP / SUMP



Process metallic cantilever pump

**QCS1**

Max 500 m3/hr  
Max 80 m  
1" to 8" / DN 25 to DN 200  
ASME / DIN  
50Hz / 60Hz

Carbon steel / 316 SS / Duplex SS / Alloy 20, Nickel / Hastelloy / Titanium



Process non clog cantilever pump

**QCS2**

Max 500 m3/hr  
Max m  
1-1/2" to 6" / DN40 to DN150  
ASME / DIN  
50Hz / 60Hz

Carbon steel / 316 SS / Duplex SS / Alloy 20, Nickel / Hastelloy / Titanium



Process plastic cantilever pump

**QCS3**

Max 1050 m3/hr  
Max 80 m  
1-1/4" to 10" / DN 32 to DN 250  
ASME / DIN  
50Hz / 60Hz

PP (Polypropylene)  
PPH (Homopolymer)  
PVDF (Polyvinylidene fluoride)  
PE (Polyethylene)  
FEP (Fluoro ethylene polymer)



Process metallic self priming pump

**QCS4**

Max 500 m3/hr  
Max 125 m  
1" to 6" / DN25 to DN150  
ASME / DIN  
50Hz / 60 Hz

Carbon steel / 316 SS / Duplex SS / Alloy 20, Nickel / Hastelloy / Titanium



Process plastic self priming pump

**QCS5**

Max 34.8 m3/hr  
Max 20 m  
DN 40 to DN 75  
-  
50Hz / 60Hz

Glass Reinforced Polypropylene / Carbon Fibre Reinforced Polypropylene / Polytetrafluoroethylene / Carbon filled Ethylene tetra fluoro ethylene

- Flow rate
- Total head
- Bore
- Flange standards
- Cycle

- Material of construction

- Characteristics

- QCS1 series metallic submersible cantilever pumps are designed for high temperature, corrosive applications. Pump shaft supported by sliding bearing
- QCS2 series metallic cantilever pumps are designed with vortex impeller which is much suitable for handling corrosive fluids containing suspended solids up to max 18mm in diameter
- QCS3 Series– Designed for highly corrosive and slightly contaminated liquid such as acid, alkalis and chemical effluents. Submersion depth up to 3 meters

- QCS4 series self priming pumps are designed for negative suction applications for handling corrosive fluids containing small amount of suspended solids
- QCS5 Series– Single stage thermoplastic self priming pump close coupled pumps are designed for negative suction, light duty , corrosive fluid transfer applications.

- Applications

- Chemical (Transfer of chemicals from storage tanks, Neutralization pit etc)
- Paper and pulp
- Mining (Utility coal pile runoff etc)
- Power generation (Sea water etc)
- Oil and gas
- Primary metals (Pickling solution, electroplating solutions etc)
- Waste water treatment
- Effluent treatment
- Sewage treatment
- Food and Beverage

- Industries







## MAGNETIC DRIVE



Magnetic drive  
(Thermoplastic)

**QMM1**

Max 180 m3/hr  
Max 100 m  
1" to 4" / DN 25 to DN 100  
-  
ASME / DIN  
N/A  
N/A  
50Hz / 60Hz

PP / GFPP / PVDF /  
FEP / PFA

- Single stage leak proof
- Closed type impeller
- Zero leak and total control of dangerous emissions
- Handle hazardous liquids
- No seal flushing required

Chemical  
Paper  
Primary metals  
WTP / STP / ETP  
Food industries



## VERTICAL INLINE



Process Vertical  
Inline

**QCV1**

Max 120 m3/hr  
Max 82 m  
1-1/2" to 4" / DN40 to DN100  
-  
ASME / DIN  
Mechanical seal  
API 682  
50Hz / 60Hz

PTFE (Polytetrafluoroethylene)  
/ FEP (Fluorinated ethylene  
propylene) / PFA  
(Perfluoroalkoxy alkane)

- Designed to handle highly corrosive fluid
- Vertical design can save space

▪ Chemical  
▪ Paper  
▪ Primary metals  
▪ WTP / STP / ETP  
▪ Food industries



Non clog pump

**QPP1**

Max 9000 m3/hr  
Max 160 m  
1 -1/4" to 24" / DN 32 to DN 600  
ISO 5199 / ISO 2858  
ASME / DIN  
Mechanical seal / Gland packing  
API 682  
50Hz / 60Hz

Carbon steel/ Ductile cast iron/  
Grey cast iron/ Austenitic cast  
steel/ Martensitic cast steel/ Wear  
and corrosion resistant cast steel/  
Duplex steel/ Super duplex /  
Nickel alloy/ Titanium

- Compliance to ISO 5199 / ISO 2858 Standard
- Single stage overhung centrifugal pump
- Reliable for pumping gas containing liquids in unstable negative inlet pressure applications
- Single or double mechanical seal with suitable flushing plan based on applications
- Closed, Semi open, Open, Low pulse or vortex impeller
- QPP1 series: Pump suspensions at a consistency of 8%
- QPP2 series: Pump suspensions at a consistency of upto 16%
- QPP3 series: Degassing pump can be coupled with liquid ring vacuum pump

▪ Viscous liquids  
▪ Fibrous Slurry  
▪ Suitable for pumping fluid containing solids and fibres  
▪ QPP3 series pumps are designed for liquids containing gases



## PAPER & PULP



Non clog – Medium  
consistency

**QPP2**

Max 9000 m3/hr  
Max 160 m  
1 -1/4" to 24" / DN 32 to DN 600  
ISO 5199 / ISO 2858  
ASME / DIN  
Mechanical seal / Gland packing  
API 682  
50Hz / 60Hz

Carbon steel/ Ductile cast iron/ Grey  
cast iron/ Austenitic cast steel/  
Martensitic cast steel/ Wear and  
corrosion resistant cast steel/  
Duplex steel/ Super duplex / Nickel  
alloy/ Titanium



Degassing self priming  
pump

**QPP3**

Max 9000 m3/hr  
Max 160 m  
1 -1/4" to 24" / DN 32 to DN 600  
ISO 5199 / ISO 2858  
ASME / DIN  
Mechanical seal / Gland packing  
API 682  
50Hz / 60Hz

Carbon steel/ Ductile cast iron/  
Grey cast iron/ Austenitic cast  
steel/ Martensitic cast steel/ Wear  
and corrosion resistant cast steel/  
Duplex steel/ Super duplex / Nickel  
alloy/ Titanium

- Flow rate
- Total head
- Bore
- Pump standard
- Flange standards
- Shaft sealing
- Flushing plan
- Cycle

- Material of construction

- Characteristics

- Applications

- Industries



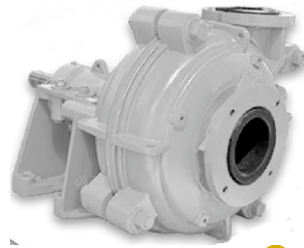
## SOLID HANDLING / ABRASIVE SLURRY / SURFACE



Medium duty metal lined slurry pump **QAG1**

Max 9106 m3/hr  
Max 59 m  
1" to 26" / DN 25 to DN 650  
ASME / DIN  
Packing/ Mechanical / Lip seal  
API 682  
50Hz / 60Hz

Cast iron/ Stainless steel / Duplex steel / Superduplex steel / Hyperchrome / Ultrachrome



Medium duty rubber lined slurry pump **QAG2**

Max 9106 m3/hr  
Max 59 m  
1" to 26" / DN 25 to DN 650  
ASME / DIN  
Packing/ Mechanical / Lip seal  
API 682  
50Hz / 60Hz

Natural rubber / EPDM / Nitrile / Butyl rubber / Hypalon / Neoprene / Viton / Polyurethane



Heavy duty metal lined slurry pump **QAG3**

Max 5400 m3/hr  
Max 118 m  
1" to 16" / DN 25 to DN 400  
ASME / DIN  
Packing/ Mechanical / Lip seal  
API 682  
50Hz / 60Hz

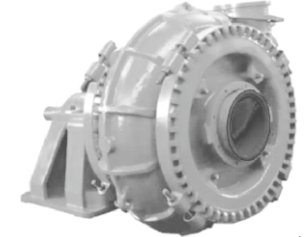
Cast iron/ Stainless steel / Duplex steel / Superduplex steel / Hyperchrome / Ultrachrome



Heavy duty rubber lined slurry pump **QAG4**

Max 5400 m3/hr  
Max 118 m  
1" to 16" / DN 25 to DN 400  
ASME / DIN  
Packing/ Mechanical / Lip seal  
API 682  
50Hz / 60Hz

Natural rubber / EPDM / Nitrile / Butyl rubber / Hypalon / Neoprene / Viton / Polyurethane



Dredge pump **QAG5**

Max 4315 m3/hr  
Max 80 m  
4" to 18" / DN 100 to DN 450  
ASME / DIN  
Packing/ Mechanical / Lip seal  
API 682  
50Hz / 60Hz

Cast iron/ Stainless steel / Duplex steel / Superduplex steel / Hyperchrome / Ultrachrome

- Flow rate
- Total head
- Bore
- Flange standard
- Shaft sealing
- Flushing plan
- Cycle

▪ **Material of construction**

▪ **Characteristics**

- QAG1 Series pump is suitable for highly abrasive and medium density slurries
- QAG3 Series pump is suitable for highly abrasive and high density slurries.
- Metal lining have high resistance to deformation
- Rubber lining have high wear resistance
- Single stage horizontal pump
- Pump discharge can be oriented to eight different configurations
- Metal and elastomer impeller are interchangeable

- External ribs in the casing provide additional strength to casing and can withstand high pressure
- Metal and elastomer impeller are interchangeable
- Liners are bolted and easy to remove. Hence easy maintenance
- Drive types: Flexible coupling / Pulley and belt/ Gear box / VSD
- Bearing lubrication: Grease or oil lubricated
- Constant level oiler

▪ **Applications**

- Transfer CaCl<sub>2</sub>, Potash etc
- Cyclone feed system
- Slurry transfer
- Absorber recycle, lime and ash slurries
- Dirty water transfer

- Cyclone feeder
- Wet scrubber system
- Corrosive sludge's
- Paper, waste and liquors
- Dredging, Tunneling, Mining etc.

▪ **Industries**





## FROTH HANDLING

## SOLID HANDLING / ABRASIVE SLURRY / SUMP



Froth pump

QAF1



Self priming slurry pump

QAS1



Cantilever slurry pump - Metal

QAS2



Cantilever slurry pump - Rubber

QAS3



Submersible abrasive particle pump

QAS4

- Flow rate
- Total head
- Bore
- Flange standard
- Immersion depth
- Shaft sealing
- Cycle

Max 575 m3/hr  
Max 30 m  
2" to 9" / DN 50 to DN 250  
ASME / DIN  
N/A  
N/A  
50Hz / 60Hz

Max 306 m3/hr  
Max 62 m  
2" to 9" / DN 50 to DN 250  
ASME / DIN  
N/A  
Packing/ Mechanical seal  
50Hz / 60Hz

Max 1260 m3/hr  
Max 40 m  
1-1/2" to 12" / DN 40 to DN 300  
ASME / DIN  
5 m  
N/A  
50Hz / 60Hz

Max 1260 m3/hr  
Max 40 m  
1-1/2" to 12" / DN 40 to DN 300  
ASME / DIN  
5 m  
N/A  
50Hz / 60Hz

Max 2400 m3/hr  
Max 64 m  
2-1/2" to 16" / DN 65 to DN 400  
ASME / DIN  
N/A  
Mechanical Seal  
50Hz / 60Hz

### Material of construction

Metal:  
Cast iron/ Stainless steel / Duplex steel / Superduplex steel / Hyperchrome / Ultrachrome  
Rubber:  
Natural rubber / EPDM / Nitrile / Butyl rubber / Hypalon / Neoprene / Viton / Polyurethane

Cast iron/ Stainless steel / Duplex steel / Superduplex steel / Hyperchrome / Ultrachrome

Cast iron/ Stainless steel / Duplex steel / Superduplex steel / Hyperchrome / Ultrachrome

Natural rubber / EPDM / Nitrile / Butyl rubber / Hypalon / Neoprene / Viton / Polyurethane

Cast iron/ Stainless steel / Duplex steel / Superduplex steel / Hyperchrome / Ultrachrome

### Characteristics

- Suitable for transferring slurry containing froth
- Wetted part can be metal or rubber lined
- Direct connection / Pulley and V-belt connection

- Suitable for negative suction applications
- Opening in the casing can be useful to quickly clean the casing if the pump is jammed
- Oil lubricated stuffing box makes the performance more reliable

- Bearing, shaft and housing are properly aligned to eliminate problems associated with cantilever shaft in the first critical operation speeds
- Column assembly is completely made up of wear resistant and corrosion resistant materials
- Immersed parts can be lined with corrosion resistant rubber
- No need any seal and flushing water
- Agitator can be fitted to the extend shaft from the impeller eye

- All wetted part can be constructed with corrosion resistant and abrasion resistant materials
- Agitator impeller can agitate the sludge deposited at the bottom of the sump

### Applications

- Froth pumps are used in floatation process
- Municipal mobile pump stations
- Transferring slurry at construction sites
- Transferring waste at slaughter house
- Mineral processing, Chemical processing, Effluent handling

- Tanning industry
- Pumping sand and gravel
- Handling storm water and oily water
- Dredging and mining
- Almost in every tank and pit etc.

### Industries





## SOLID HANDLING / FIBROUS / SUMP



Sewage submersible pump

QSF1

Max 6,000 m<sup>3</sup>/hr  
Max 62 m  
2" to 24" / DN 50 to DN 600  
ASME / DIN  
Mechanical seal  
50Hz / 60Hz

Cast iron/ Stainless steel / Duplex steel



Cutter pump

QSF2

Max 38 m<sup>3</sup>/hr  
Max 35 m  
1" to 26" / DN 25 to DN 650  
ASME / DIN  
Mechanical seal  
50Hz / 60Hz

Cast iron/ Stainless steel / Duplex steel



Small range submersible pump

QSF3

Max 200 m<sup>3</sup>/hr  
Max 38 m  
1" to 16" / DN 25 to DN 400  
ASME / DIN  
Mechanical seal  
50Hz / 60Hz

Cast iron/ Stainless steel / Duplex steel



Submersible axial flow pump

QSF4

365 to 31,650 m<sup>3</sup>/hr  
1.76 to 12.42 m  
-  
-  
Mechanical seal  
50Hz / 60Hz

Cast iron/ Copper/ Stainless steel / Duplex steel



Submersible mixed flow pump

QSF5

582 to 10,210 m<sup>3</sup>/hr  
5.85 to 21.97 m  
-  
-  
Mechanical seal  
50Hz / 60Hz

Cast iron/ Stainless steel / Duplex steel

- Flow rate
- Total head
- Bore
- Flange standard
- Shaft sealing
- Cycle

- Material of construction

### Characteristics

- QSF1 , QSF2 , QSF3 suitable for pumping fluids containing soft suspended solids and fibres
- Length of the fibre shall not be more than the discharge size bore QSF2
- equipped with an independent cutter system
- QSF3 are suitable for smaller flow rate and head
- In addition to lubricating the mechanical seal the oil in the oil chamber reduce the heat in the bearing and resist the liquid penetration
- Installation types: Dry pit type, Movable wet pit type, Fixed wet pit type, Auto coupled

- Submersible axial and mixed flow pumps are suitable for high flow rate and log head applications
- Installation type: Suspension installation , Pre-cast concrete installation

### Applications

- Industrial sewage treatment
- Municipal sewage
- Storm water containing solids
- Fluid containing fibres

- Municipal water supply
- Sewage drainage system
- Sewage disposal

### Industries





## SEWAGE/NON SOLID/SUMP

## AXIAL & MIXED FLOW PUMP



Cantilever pump

**QSF6**

Flow rate: 6 to 2000 m3/hr  
 Total head: 6 to 62 m  
 Bore size: 1" to 6" / DN 25 to DN 150  
 Shaft sealing: Packing/ Mechanical seal  
 Cycle: 50Hz / 60Hz

Material of construction: Cast iron / Stainless steel / Duplex steel

- Suitable for transporting fluids containing solid grain of diameter about 50% of pump aperture
- Suitable for fluid containing suspended grains and fibres, corrosive and abrasive

- Chemical industry
- Paper making industry
- Storm water transfer
- Steel plant
- Water sewage and effluent treatment
- Municipal water transfer  
Irrigation, residential and industrial water supply



Turbine pump

**QST1**

Flow rate: 15 to 10,500 m3/hr  
 Total head: 7 to 120 m  
 Bore size: 2" to 40" / DN 50 to DN 1000  
 Shaft sealing: Packing/ Mechanical seal  
 Cycle: 50Hz / 60Hz

Material of construction: Cast iron / Stainless steel / Duplex steel

- Designed for pumping sewage or waste water which are non corrosive at the temperature below 60°C
- Handles fluid containing suspended substances free of fibres or abrasive particles (Less than 150mg/L)

- Public work
- Metal industry
- Chemical industry
- Paper making
- Power station
- Irrigation
- Water conservatory



Small range submersible pump

**QMX1**

Flow rate: 645 to 17,990 m3/hr  
 Total head: Max 25m  
 Bore size: 9" to 36" / DN 250 to DN 900  
 Shaft sealing: Packing + dynamic / Mechanical Seal  
 Cycle: 50Hz / 60Hz

Material of construction: Cast iron/ Stainless steel / Austenitic stainless steel / Duplex steel /Alloy 20

- The wetted parts has reasonable material selection, which meets the wear resistance and corrosion resistance requirements of slurry for conveying different media conditions
- Rotor component axially movable
- The bearing body adopts water cooled structure to ensure the smooth running of the bearing and improve the service life of the bearing
- Suitable for more flow low head operation

- Flue gas desulphurization process transferring lime slurry and gypsum slurry
- Centri cleaner system in paper and pulp industry
- Water injection at sugar industry
- Sea water transfer
- Irrigation and drainage
- Medium and low head application
- Clean or slightly contaminated liquid



Submersible axial flow pump

**QAX1**

Flow rate: 810 to 12,990 m3/hr  
 Total head: Max 8 m  
 Bore size: -  
 Shaft sealing: Packing/ Mechanical seal  
 Cycle: 50Hz / 60Hz

Material of construction: Cast iron/ Stainless steel / Austenitic stainless steel / Duplex steel /Alloy 20



Submersible mixed flow pump

**QAX2**

Flow rate: 810m3/hr to 12,900 m3/hr  
 Total head: Max 8 m  
 Bore size: 12" to 52" / DN300 to DN 1300  
 Shaft sealing: Packing/ Mechanical seal  
 Cycle: 50Hz / 60Hz

Material of construction: Cast iron/ Stainless steel / Austenitic stainless steel / Duplex steel /Alloy 20



Flow rate  
 Total head  
 Bore size  
 Shaft sealing  
 Cycle

Material of construction

Characteristics

Applications

Industries



## AIR COOLED PUMP



Air cooled pump

**QHO1**

Max 400 m<sup>3</sup>/hr  
 Max 140 m  
 1-1/4" to 6" / DN 32 to DN 150  
 ASME / DIN  
 Mechanical seal  
 API 682  
 50Hz / 60Hz

Cast iron  
 Ductile iron  
 Chrome nickel molybdenum steel  
 Chromium steel

- Flow rate
- Total head
- Bore
- Flange standard
- Shaft sealing
- Flushing plan
- Cycle

- Material of construction

- Characteristics

- Designed for pumping high temperature fluids
- EN733 standard
- Offered with High temperature resistant mechanical seal
- Easy to install and maintain

- Applications

- Chemical plants
- Paper industries
- Hot oil and synthetic oil transfer
- District heating system
- Hot water transfer in buildings
- Sugar industry

- Industries



## MULTISTAGE PUMP



Multistage pump

**QMS1**

Max 840 m<sup>3</sup>/hr  
 Max 680 m  
 1-1/2" to 12" / DN 40 to DN 300  
 ASME / DIN  
 Packing / Mechanical seal  
 API 682  
 50Hz / 60Hz

Grey cast iron  
 Ductile cast iron  
 Cast steel  
 SS 304 / S316

- Designed with diffuser type casing for higher efficiency
- Suitable for clear water and chemicals without solid particles
- Allowed partical size: Less than 1.4 mm
- Throttling, Pressure reducing and balancing device for longer service life

- Water circulation in power plant
- Boiler feed
- Sea water transfer at desalination plant
- Municipal water transfer and irrigation
- Cooling towers
- Residential and industrial water supply



## MULTISTAGE PUMP



Boiler feed pump

**QMS2**

Max 864 m<sup>3</sup>/hr  
 Max 2070 m  
 1-1/2" to 14" / DN 40 to DN 350  
 ASME / DIN  
 Packing / Mechanical seal  
 API 682  
 50Hz / 60Hz

Grey cast iron  
 Ductile cast iron  
 Cast steel  
 SS 304 / S316



## SPLIT CASE PUMP



Split case pump

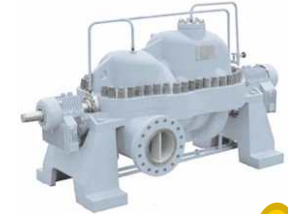
**QSC1**

23 to 1620 m<sup>3</sup>/hr  
 8 to 300 m  
 3" to 36" / DN 80 to DN 900  
 -  
 Packing / Mechanical seal  
 API 682  
 50Hz / 60Hz

Grey cast iron  
 Ductile cast iron  
 Cast steel  
 SS 304 / S316

- Single stage double suction impeller
- Axially split design allows easy maintenance
- Independent bearing housing facilitates easy maintenance
- Available with a liquid cooled sleeve bearing which improves life and reduce maintenance
- Option: Anti-Corrosion / Anti-Abrasion coating

- Municipal water supply
- Desalination plants
- District heating & cooling plants
- Service and cooling water for power station and industry
- Ship building
- Irrigation



Multistage split case pump

**QSC2**

Max 4995 m<sup>3</sup>/hr  
 Max 1998 m  
 2-1/2" to 44" / DN 65 to DN 1,100  
 -  
 Gland packing / Mechanical Seal  
 API 682  
 50Hz / 60Hz

Grey cast iron  
 Ductile cast iron  
 Cast steel  
 SS 304 / S316



**WATER PUMPS & RO PUMPS (WX Series)**



**FIRE PUMPS & SYSTEMS (FX series)**



**VACUUM PUMP (VX series)**



**SANITARY PUMPS (SX series)**



**BLOWER (BX series)**



**POSITIVE DISPLACEMENT PUMPS**



**Gear Pump**



**Screw pump**



**Lobe pump**



**Progress cavity pump**



**Piston plunger pump**



**Vane pump**



**Dosing pumps (SEKO / IWAKI / WILDEN)**



## Engineering support and supply of Pumps,

Chemical Process pump | Fuel Pump | Oil pump | Water pump  
Sea Water pump | Sludge pump | High pressure pump | Dosing pump  
Booster pump | Hydraulic / Piston pump | Ro pump | Aquarium pump  
Swimming pool pump | Vacuum pump | Bore well pump  
Firefighting & Sprinkler pump | Solid or Semi solid cutter pumps.

# QMEKK ENGINEERING PTE, LTD



📍 Ubi Avenue 1, #01-203, Singapore 400306

☎ +65 9446 2634, +65 8657 9285

🌐 [www.qmekk.com](http://www.qmekk.com)

✉ [sales@qmekk.com](mailto:sales@qmekk.com)