

# Quality: why compromise?



**You choose a JCB machine because it's the best in the business.**

**You choose JCB lubricants because they will help maximise your investment.**

**JCB never compromises when it comes to the strength and performance of its machines. So, we have also made sure that you can keep your investment operating at peak performance and productivity with a range of lubricants, greases and accessories designed specifically with you in mind, being totally matched to your machine.**

**The comprehensive range of JCB lubricants has been approved by JCB engineers to ensure that your engine, transmission, hydraulic system and other key components receive the optimum level of protection, lengthening component life and keeping down your costs of ownership.**

# Innovation: why compromise?

## BAG IN BOX LUBRICANTS

TOP QUALITY JCB LUBRICANTS IN ENVIRONMENTALLY FRIENDLY PACKAGING. AVAILABLE IN 5 LITRE AND 20 LITRE SIZES, THESE PACKS CONTAIN 85% LESS PLASTIC AND WILL REDUCE RECYCLING COSTS.

OUTER CARDBOARD CONTAINER IS MADE FROM 96% RECYCLED CARDBOARD AND IS 98% RECYCLABLE

CONTAINERS CAN BE STACKED 3 HIGH, INCREASING STORAGE EFFICIENCY

20 LITRE SIZE MAKES HANDLING EASIER AND SAFER



EASY TO POUR SPOUT

EMPTY COMPACTED BAG IS DISPOSED OF AS HAZARDOUS WASTE

INNER PLASTIC BAG USES ONLY 115G OF PLASTIC COMPARED TO 720G USED BY CONVENTIONAL CONTAINERS

WATER RESISTANT



## BAG IN BOX LUBRICANTS

JCB'S INNOVATIVE BAG IN BOX (BIB) CONCEPT OFFERS A TRULY ENVIRONMENTALLY FRIENDLY ALTERNATIVE TO CONVENTIONAL PLASTIC PACKAGING IN 20 LITRE AND 5 LITRE PACKAGE SIZES.

The JCB Bag in Box comprises a robust, triple ply plastic bag inside a heavy duty, shrunk wrapped, water resistant cardboard outer carton. Once the package is empty, the box can be recycled with standard cardboard waste and the compacted inner bag is disposed of with other hazardous waste.

The JCB Bag in Box system reduces the amount of plastic required for the 20 litre pack by approximately 85% and in addition the box is manufactured from 96% recycled cardboard. Conventional plastic drums correctly disposed of go into landfill sites, which is environmentally damaging, extremely expensive with escalating costs and is a finite resource.

As well as the environmental benefits, this rigorously tested cardboard package offers damage protection when accidentally dropped, easy to pour smooth flow spout, reduced recycling costs and minimised impact of future plastics disposal legislation. In addition the JCB Bag in Box, due to its rectangular design complete with handle, also offers ease of handling, maximisation of storage, and the most efficient utilisation of transport.

We at JCB are proud to bring this new and innovative alternative packaging solution to the lubricants' marketplace as part of the JCB commitment to excellence and environmental protection.

### Main benefits of Bag in Box

- Environmentally friendly
- Reduced disposal costs
- Water resistant
- Easy to handle, use and store
- Excellent JCB brand presence

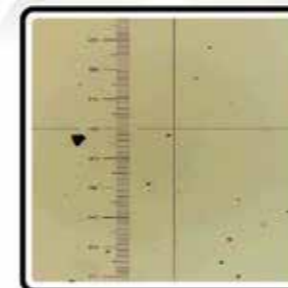


## PROTECT WITH JCB LUBRICANTS

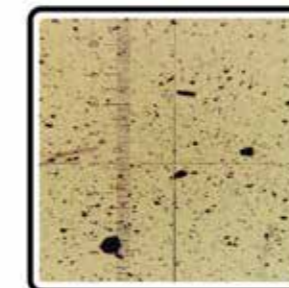
WITH JCB LUBRICANTS  
THE DIFFERENCE IS CLEAR



JCB OIL AT NEW



LOW COST OIL AT NEW



Always specify JCB Lubricants for maximum protection, efficiency and reliability

PROTECT

ЗАЩИТИТЬ

CHRONIC

PROTECT

CHRÁNIŤ

PROTÉGER

CHRONIC

PROTECT

CHRÁNIŤ

ЗАЩИТИТЬ

PROTEGER

SCHUTZ

SCHUTZ

CHRONIC

PROTECT

# Performance: why compromise?

## JCB AGRICULTURAL OILS

JCB AGRICULTURAL OILS ARE A SMART CHOICE FOR A BROAD RANGE OF AGRICULTURAL REQUIREMENTS, OFFERING A SINGLE PRODUCT WITH REDUCED STORAGE AND COSTS AND NO RISK OF INCORRECT APPLICATION.



### JCB Universal Agricultural Oil

JCB Standard: 4004/0300

Sizes available: 20ltr, 200ltr, 1000ltr

A truly multipurpose oil which is suitable for naturally aspirated, turbocharged engines, transmissions (including wet brake systems) and hydraulics.

JCB Universal Agricultural Oil can also be used in power steering and power take-offs where an engine oil is specified.

This SAE 10W30 viscosity product has good fluidity, ensuring easy starting and rapid hydraulic response even in the most severe weather conditions.

### Performance Classifications:

API CF-4/SF API GL-4

### Manufacturers' Standards:

Case MS 1118, MS 1209 • Ford ESN-M2C-41-B, -121-E, -134-C, -159-C • Massey Ferguson CMS M1127, 1135, 1139, 1141, 1144 • Caterpillar TO-2  
• Allison C-4 • New Holland NH 024C, 324B, 410B  
• ZF TE-ML 06 B, 07 B



**YOU CAN BE SURE OF THE PERFORMANCE AND CONFIDENT OF THE PROTECTION OFFERED BY JCB ENGINE OILS. THE HIGH QUALITY BASE OILS AND CAREFULLY SELECTED ADDITIVES ENSURE JCB ENGINE OILS EXCEED ALL INTERNATIONAL SPECIFICATIONS.**

**JCB Ultra Performance Engine Oil 15W40**

**JCB Standard:** 4002/2900

**Sizes available:** 5ltr, 20ltr, 200ltr, 1000ltr

JCB UP 15W40 is aimed at Tier 4i/Stage IIIB Diesel engines that utilise DOC (Diesel oxidation catalyst), DPF (Diesel particulate filter) and SCR (Selective catalytic reduction) aftertreatment technology to meet emissions legislation. JCB UP15W-40 is an Ultra High Performance Diesel Engine Lubricant with Medium Sulphated Ash, Phosphorus and Sulphur content (Mid SAPS) and is also designed for the lubrication of the latest high performance USA EPA 2007 and EURO 5 diesel engines, in particular where these engines are equipped with after treatment systems (such as DOC, DPF & SCR) operating on low sulphur diesel fuel (50 ppm or below) and under severe heavy duty conditions.

**It provides the following benefits:**

- Specially developed formulation for ACEA E9 and API CJ-4 applications
- Minimises diesel particulate filter (DPF/CRT) plugging
- Protects catalytic after treatment systems (SCR)
- Excellent protection against bore polishing and cam wear
- Provides quick lubrication after cold starting thus limiting engine wear
- Prevents engine fouling due to combustion soot

**Performance Classifications:** API CJ-4 / API SM, ACEA E9

**Manufacturers' Standards:** Volvo VDS-4, Renault RLD-3, MB 228.31, MAN 3575, MAN 3275, MTU Type 2.1, Deutz DQC III-05, Cat ECF-3/ECF-2/ECF-1a, Mack EOM- Premium Plus, Cummins CES 20081, DDC 93K218.

**JCB Optimum Performance Engine Oil 15W40**

**JCB Standard:** 4001/2800

**Sizes available:** 5ltr, 20ltr, 200ltr, 1000ltr

JCB Optimum Performance Engine Oil 15W40 is a super high performance diesel engine lubricant designed for the lubrication of low emission Euro 4 engines and Euro 3 engines. It can be used in all high performance four stroke diesel engines operating on low sulphur diesel fuel (<0.05% mass) and under severe heavy duty conditions. The diesel engines may be normally aspirated, turbocharged or supercharged, with or without intercooling and fitted in commercial vehicles or off-highway equipment. It is also suitable for application in passenger cars with petrol or diesel engines. **This oil meets API CI-4 specification.**

**Performance Classifications:** API CI-4/SL, ACEA E7, E5, E3, B4, B3, A3

**Manufacturers' Standards:** MAN M3275 • MB 228.3 • Volvo VDS-3 • MTU Type 2 • Mack EO-N • Cummins CES 20071, -72, -76, -77 • World-wide DHD-1 • Caterpillar ECF-1 & ECF-2 • Renault VI RLD & RLD-2 • ZF TE-ML 04C, 07C • Exceeds requirements of DAF, IVECO and Scania.

**JCB Engine Oil EP 15W40**

**JCB Standard:** 4001/1800

**Sizes available:** 5ltr, 20ltr, 200ltr, 1000ltr

An advanced, high specification engine oil, suitable for use in on and off highway and in commercial vehicle applications, including those meeting Euro 3 exhaust emission regulations. Its outstanding protection for naturally aspirated, turbocharged and supercharged engines makes it the ideal choice for both single and mixed fleet operations.

**Performance Classifications:** API CH-4/SJ, ACEA E5, E3, B3, A3

**Manufacturers' Standards:** MAN M3275 • MB 228.3 • MTU Type 2 • Mack EO-M Plus, Cummins CES 20071, -72, -76, -77 • Exceeds requirements of DAF, IVECO, RVI and Scania

**JCB Engine Oil HP 15W40**

**JCB Standard:** 4001/1500

**Sizes available:** 5ltr, 20ltr, 200ltr, 1000ltr

JCB HP 15W40 is a universal mixed fleet engine lubricant and is used in high performance four stroke diesel engines, normally aspirated as well as turbocharged or supercharged, operating under moderate to heavy duty condition. JCB HP 15W40 is used as engine lubricant in off highway/construction applications, commercial vehicles, buses or military equipment, when one or more of the following specifications below are used to describe the required lubricant quality.

**It provides the following benefits:**

- Universal mixed fleet engine lubricant
- Universal engine/transmission lubricant for buses and off-highway or military equipment
- Reduces handling and storage costs (One oil for many applications)
- Provides good lubrication after cold starting thus limiting engine wear
- Prohibits corrosion and protects against rust

**Performance Classifications:** API CG-4/SJ/CF, ACEA A2/B2/E2

**Manufacturers' Standards:** MAN 271, Mercedes Benz 228.1, VW 501.01 / 505.00 performance demonstration, Volvo VDS, Mack EO-L Plus, MTU Type 1

**JCB Engine Oil HP 10W30**

**JCB Standard:** 4001/1700

**Sizes available:** 5ltr, 20ltr, 200ltr, 1000ltr

JCB HP 10W30 is a universal mixed fleet engine lubricant and is used in high performance four stroke diesel engines, normally aspirated as well as turbocharged or supercharged, operating under moderate to heavy duty condition. JCB HP 10W30 is used as engine lubricant in off highway/construction applications, commercial vehicles, buses or military equipment, when one or more of the following specifications below are used to describe the required lubricant quality.

**It provides the following benefits:**

- Universal mixed fleet engine lubricant
- Universal engine/transmission lubricant for buses and off-highway or military equipment
- Reduces handling and storage costs (One oil for many applications)
- Fuel saving low viscosity engine oil
- Provides superior lubrication after cold starting thus limiting engine wear
- Prohibits corrosion and protects against rust

**Performance Classifications:** API CH-4/CG-4/SJ/CF, ACEA A2/B2/E2

**Manufacturers' Standards:** Mack EO-L Plus, Cummins CES 20076, Cat ECF-1



**JCB Engine Oil HP 20W50**

**JCB Standard:** 4001/1900

**Sizes available:** 5ltr, 20ltr, 200ltr

JCB HP 20W50 is a universal mixed fleet engine lubricant and is used in high performance four stroke diesel engines, normally aspirated as well as turbocharged or supercharged, operating under moderate to heavy duty condition. JCB HP 20W50 is used as engine lubricant in off highway/construction applications, commercial vehicles, buses or military equipment, when one or more of the following specifications below are used to describe the required lubricant quality.

**It provides the following benefits:**

- Universal mixed fleet engine lubricant
- Universal engine/transmission lubricant for buses and off-highway or military equipment
- Reduces handling and storage costs (One oil for many applications)
- Provides good lubrication after cold starting thus limiting engine wear
- Prohibits corrosion and protects against rust

**Performance Classifications:** ACEA A2/B2/E2, API CF-4/SJ/CF

**JCB Engine Oil HP SAE30**

**JCB Standard:** 4001/0300 **Sizes available:** 5ltr, 20ltr, 200ltr

A versatile, high performance engine oil for diesel engines in commercial vehicles and plant operating under moderate and heavy conditions, where a monograde oil is prescribed or preferred. JCB Engine Oil HP SAE 30 can also be used as a gear, transmission or hydraulic lubricant. Its excellent anti-sludge and detergent/dispersant properties keep the engine clean and deposit free.

**Performance Classifications:** API CD/SF/CDII, CCMC G2, PDI, D2 **Manufacturers' Standards:** MIL-L-46152-C • MIL-L-2104C • Mercedes-Benz 227.0 • MAN 270 • Clark Form TLC-25 3M8-83 • DANA Spicer Bulletin 2508-9

**Transmission specifications:** Eaton/Fuller Bulletin 2052 • Voith • ZF TE-ML 03 • Allison C-3 • Caterpillar TO-2

**JCB Cold Climate Engine Oil 5W40**

**JCB Standard:** 4001/2700 **Sizes available:** 5ltr, 20ltr, 200ltr, 1000ltr

JCB Cold Climate Engine Oil EP 5W/40 is a high performance synthetic diesel engine lubricant which is specially formulated to offer superior cold start properties. With a pour point of -30°C it is an ideal choice for off-highway equipment operating in low temperature conditions below -10°C. In addition it offers protection against corrosion and rust and the increased wear found in cold start conditions.

This product has been specifically introduced for the JCB Dieselmex T3 engine when used in extremely cold climates and offers excellent, cost effective protection for your equipment.

**Performance Classifications:** API CH-4/CG-4/CF-4/CF/SJ, SAE 5W40, ACEA E2, B3, A3



**MAINTAINING A SUPER CLEAN HYDRAULIC SYSTEM ENSURES MINIMUM DOWNTIME. GENUINE JCB HYDRAULIC FLUIDS FEATURE HIGH QUALITY BASE OIL AND SOPHISTICATED ADDITIVES, FILTERED TO HIGHER THAN NORMAL TOLERANCES TO ENSURE EXTENDED COMPONENT LIFE.**

**JCB Optimum Performance Hydraulic Fluid 46**

JCB Standard: 4002/2000

Sizes available: 5ltr, 20ltr, 200ltr, 1000ltr

JCB Optimum Performance Hydraulic Fluid 46 is a shear stable top quality hydraulic oil that meets the arduous demands of most off highway plant and stationary hydraulic systems exposed to wide temperature fluctuations. In particular it protects against shearing, which is the permanent loss of viscosity due to mechanical or oxidation breakdown. It also offers excellent protection against rust, corrosion and metal fatigue, combined with "keep clean" additives to prevent clogging of filters, ensuring long life to the system's components. This hydraulic fluid may be offered to those demanding the highest quality lubricants available. Tests by JCB engineers have shown that use of this fluid can reduce fuel consumption and improve machine productivity.

**Specifications and manufacturers' standards:** DIN 51524, part 3, category HVLP • ISO 11158, category HV • SS 155434, category AV • Denison HF-0, HF-1, HF-2 • AFNOR 48-603, category HV

**JCB Hydraulic Fluid EP 46**

JCB Standard: 4002/1600

Sizes available: 5ltr, 20ltr, 200ltr, 1000ltr

A high viscosity index (VI) multigrade antiwear hydraulic fluid, which retains its multigrade properties over a wide range of applications and climatic conditions. Manufactured from the highest quality solvent refined base stocks and special additives, it will remain at specification throughout its life, giving superb performance between service intervals.

**Specifications and manufacturers' standards:** DIN 51524, Part 3, category HVLP • AFNOR NFE 48-690 (dry), 691 (wet) • Vickers M-2950-s (Mobile) • Vickers I-286-S • ISO 11158 category HV • US Steel 126, 127 Poclair Excavators ISO 46 • MAG IAS

**JCB Hydraulic Fluid HP 46**

JCB Standard: 4002/0800

Sizes available: 5ltr, 20ltr, 200ltr, 1000ltr

A top quality hydraulic fluid based on the latest low zinc technology, combining anti-wear performance with excellent filterability in both wet and dry conditions. Specially formulated from solvent refined base oil, containing a superior additive package, which not only provides outstanding performance but also reduces pump, motor and valve wear. JCB Hydraulic Fluid HP 46 provides excellent protection against corrosion and metal fatigue, combined with superb filterability characteristics ensuring long service life.

**Specifications and manufacturers' standards:** ISO 11158, category HM • SS 155434, category AM • DIN 51524, Part 2, category HLP • MAG IAS • Denison HF-0, HF-1, HF-2

**JCB Hydraulic Fluid UP 32**

JCB Standard: 4002/2800

Sizes available: 20ltr, 200ltr

JCB Ultra Performance Hydraulic Fluid 32 is specifically developed for construction equipment operated under wide extremes of temperature. The product provides outstanding low (pour point of -51°C) and high temperature viscosity characteristics. JCB UP Hydraulic Fluid 32 is also a long term stable fluid with optimum anti-wear performance.

**Specifications and manufacturers' standards:** ISO 11158 HV • DIN 51524, Part 3, category HVLP • Swedish Defence FSD 8401 • Volvo STD 1286.07 • SS 155434, category AV

**JCB Hydraulic Fluid HP 32**

JCB Standard: 4002/1000

Sizes available: 5ltr, 20ltr, 200ltr, 1000ltr

A high quality hydraulic fluid, based on the latest low zinc technology, combining anti-wear performance with excellent filterability in both wet and dry conditions. Specially formulated from solvent refined base oil, containing a superior additive package, which not only provides outstanding performance but also reduces pump, motor and valve wear. JCB Hydraulic Fluid HP 32 provides excellent protection against corrosion and metal fatigue, combined with superb filterability characteristics ensuring long service life.

**Specifications and manufacturers' standards:** ISO 11158, category HM • SS 155434, category AM • DIN 51524, Part 2, category HLP • Denison HF-0, HF1, HF2 • MAG IAS

**JCB Hydraulic Fluid HP 15**

JCB Standard: 4002/0500 Sizes available: 1ltr, 5ltr

A premium, shear stable anti wear ISO 15 mineral hydraulic fluid, formulated for good low flow characteristics at low ambient temperatures.

**Specifications and manufacturers' standards:** ISO 11158, category HV • DIN 51524, Part 3 category HVLP

**JCB Optimum Performance Hydraulic Fluid 68**

JCB Standard: 4002/2700

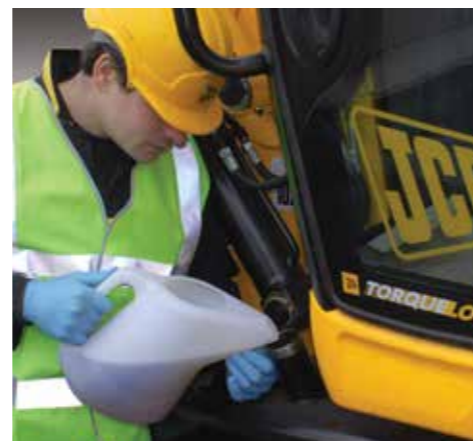
Sizes available: 5ltr, 20ltr, 200ltr, 1000ltr

JCB Optimum Performance (OP) Hydraulic Fluid 68 is a high quality, shear stable top tier hydraulic oil. It has been developed for off highway equipment and other hydraulic systems exposed to wide temperature fluctuations. This is a Maximum efficiency Hydraulic Fluid (MEHF).

It provides the following Benefits:

- Very stable viscosity behaviour, due to the use of a very shear stable viscosity modifier
- Optimum anti-wear performance, based on a zinc dialkyldithiophosphate additive
- Wide application temperature range through low pour point and outstanding low and high temperature viscosity characteristics
- Trouble-free operation due to the unique combination of outstanding demulsibility, foam, air release, hydrolytic stability and filterability

**Specifications and manufacturers' standards:** ISO 11158, category HV • DIN 51524, Part 3, category HVLP • SS 155434, category AV • Denison HF-0, HF-1, HF-2 • AFNOR 48-603, category HV



**JCB Hydraulic Fluid HP 68**

JCB Standard: 4002/0700

Sizes available: 20ltr, 200ltr

A top quality anti-wear hydraulic oil, specially designed to meet the stringent filterability requirements of modern tools and electro-hydraulic systems, for use in machines where accurate indexing, positioning and sequencing depends on oil quality. Manufactured from the highest quality solvent refined base stocks and special additives. The formulation is based on the latest low-zinc technology, combining high anti-wear performance with excellent filterability in both wet and dry conditions. It is fully inhibited to keep systems free of corrosion and sludging and is highly resistant to foaming. **Specifications and manufacturers' standards:** ISO 11158, category HM • SS 155434, category AM • DIN 51524, Part 2, category HLP • MAG IAS • Denison HF-0, HF-1, HF-2

**JCB Biodegradable Hydraulic Fluid 46**

JCB Standard: 4002/2600

Sizes available: 20ltr, 200ltr, 1000ltr

This oil is suitable for most types of hydraulic plant and equipment, where leaks or accidental spillage could result in the contamination of soil, water or ground water. **It is also compatible with all previous JCB Biodegradable Hydraulic Oil offerings.** Typical uses include: mobile plant associated with forestry, water management, inland waterways, dockyards, agriculture, construction, quarrying, refuse collection, landfill, water treatment, road building, railroads and mining. It is a non mineral, ecologically acceptable hydraulic fluid (EAHF) based on Synthetic Ester technology, which ensures equal high temperature and anti-wear performance to that of conventional mineral hydraulic oils. It meets the requirements of VDMA (draft DIN for EAHF) HEES 46 and is 100% Biodegradable under the CEC L-33-T-82 method.

**Specifications and manufacturers' standards:** DIN 51524, part 3, category HVLP (except oxidation stability D943) • ISO 11158, category HV (except oxidation stability D943) • Draft DIN specification for HE type fluids • ISO 15380, HEES type • SS 155434, category BV • VDMA 24586 • Denison HF-2 & HF-6



**GENUINE JCB GEAR OILS OFFER IMPROVED PERFORMANCE AND HIGH LEVELS OF WEAR PROTECTION. THEY ARE SUITABLE FOR A WIDE RANGE OF APPLICATIONS.**

**JCB Optimum Performance Gear Oil**

**JCB Standard:** 4000/3700

**Sizes available:** 5ltr, 20ltr, 200ltr, 1000ltr

JCB Optimum Performance Gear Oil has been specially developed as a universal gear oil to satisfy both the drum and gear lubrication requirements of the JCB Vibromax range of machines.

**Performance classifications:** DIN 51517 part 3, category CLP ISO 12925-1, Type CKC-CKD. AGMA 9005 E02

**Manufacturers' standards:** Jahnle-Kestermann Getriebewerke GmbH & Co KG

**JCB Gear Oil EP 85W140**

**JCB Standard:** 4000/0600

**Sizes available:** 5ltr, 20ltr, 200ltr, 1000ltr

A heavy duty multigrade gear lubricant, suitable for use in gearboxes and final drives, where special anti-wear protection is required. The high quality additive package and unique base oils protect against rust and corrosion, extending component life. Particularly suited for hypoid and spiral bevel type gears in commercial vehicles, off-highway equipment and passenger cars operating in moderate to heavy conditions.

**Performance classifications:** API GL-5, MIL-L-2105D (multigrades), British Ministry of Defence CS 3000B

**Manufacturers' standards:** JI Case MS 1316 • Clark MS-8 Rev. 1 • Clark Form No. ALC-1 5M 7-80 KE, TLC-25 3M 8-83 • John Deere JDM J11D/E • Eaton Bulletin 2053, 6007, Eaton/Fuller Bulletin 2052 • Ford SM- 2C-101 IA SQM-2C9002-AA • Fuller Form 121 • General Motors Pt. no. 88 63 370, 85 476 • Komatsu Dresser B22-0003, B22-0005 • MAN 342 • Mercedes-Benz page 235.0 • Rockwell Int 0-76 • VME Americas EEMS 19003F • Volvo 97310 • ZF TE-ML 01, 05, 07, 12A

**JCB Gear Oil HP**

**JCB Standard:** 4000/0500

**Sizes available:** 20ltr, 200ltr, 1000ltr

A highly refined paraffinic mineral oil, containing extreme pressure additives and friction modifiers, suitable for a wide range of applications including: axles, oil-immersed brakes, clutches, transmissions and hydraulics.

**Performance classifications:** API GL-4

**Manufacturers' standards:** Case MS 1209 (Hy-Tran Plus, transmissions, hydraulics, wet brakes) • Case UK/David Brown • John Deere JDM J20C • Fiat AF 87 • Ford New Holland ESEN-M2C86-B Komatsu Dresser B06-0002 • Landini UTTO • Massey Ferguson CMS M 1127, 1135, 1141 • SAME UTTO (past 1981 models) • Valmet/Volvo BM UTTO (transmissions, hydraulics) • Allison C-3 (automatic transmissions) • Caterpillar TO-2 (transmissions)

**JCB Gear Oil HP Plus**

**JCB Standard:** 4000/2200

**Sizes available:** 5ltr, 20ltr, 200ltr, 1000ltr

A high performance gear oil with unique enhanced viscosity stability for consistent protection throughout its service life. In addition to ensuring excellent wear resistance for valves, pumps and gears, its unique JCB formulation offers outstanding squawk and chatter control in oil immersed brake systems.

**Performance classifications:** API GL-4

**Manufacturers' standards:** Ford New Holland ESN-M2C 41-B, 132-D • John Deere JDM J20C • Massey Ferguson CMS M 1127, 1135, 1141, 1143 • Case MS 1207, 1210, 1230 • White New Idea Q-1802, Q-1826 • Caterpillar TO-2, Allison C-3 and C-4

**JCB Gear Oil LS Plus**

**JCB Standard:** 4000/3900

**Sizes available:** 5ltr, 20ltr, 200ltr, 1000ltr

An SAE 80W90 multipurpose limited slip gear oil designed for use in hypoid gears, axles and final drives. It is especially suited for those with wet brake plates and limited slip (LS) differentials. This oil also offers reduced 'Brake Chatter' and improved mechanical transmission component life along with excellent extreme pressure protection. JCB Gear Oil LS Plus can be used for both on and off-highway equipment.

**Performance classifications:** API GL-5

**Manufacturers' standards:** JDQ-96(JD J20C)

**JCB Gear Oil HP 90**

**JCB Standard:** 4000/0300

**Sizes available:** 5ltr, 20ltr, 200ltr, 1000ltr

A heavy duty multipurpose gear oil, formulated for gear type transmissions, spiral bevelled and hypoid drive axles, operating within a very wide oil temperature range (up to 150°C) and worm gear final drives (up to 100°C). It contains extreme pressure additives to give high level wear protection under high speed, high torque and shock loading conditions.

**Performance classifications:** API GL-5, MIL-L-2105B (monogrades) British Ministry of Defence CS 3000B

**Manufacturers' standards:** JI Case MS 1316 • Clark MS-8 Rev. 1 • Clark Form No. ALC-1 5M 7-80 KE, TLC-25 3M 8-83 • John Deere JDM J11D/E • Eaton Bulletin 2053, 6007 • Eaton/Fuller Bulletin 2052 • Ford SM-2C-101 IA SQM-2C9002-AA • Fuller Form 121 • General Motors Pt. no. 88 63 370, 85 476 • Komatsu Dresser B22-0003, B22-0005 • MAN 342 • Mercedes-Benz page 235.0 • Rockwell International 0-76 • VME Americas EEMS 19003F • Volvo 97310 • ZF TE-ML 01 • ZF TE-ML 05 • ZF TE-ML 07 • ZF TE-ML 12A



**JCB Gear Oil EP 80W90**

**JCB Standard:** 4004/5100

**Sizes available:** 20ltr, 200ltr

A heavy duty multigrade gear lubricant, suitable for use in gearboxes and final drives where special anti-wear protection is required. The high quality additive package and unique base oils protect against rust and corrosion, extending component life. This oil is particularly suited for hypoid and spiral bevel type gears in commercial vehicles, off-highway equipment and passenger cars operating in moderate to heavy conditions.

**Performance classifications:** API GL-5, MIL-L-2105D (multigrades), British Ministry of Defence CS 3000B

**Manufacturers' standards:** JI Case MS 1316 • Clark MS-8 Rev. 1 • Clark Form No. ALC-1 5M 7-80 KE, TLC-25 3M 8-83 • John Deere JDM J11D/E • Eaton Bulletin 2053, 6007 • Eaton/Fuller Bulletin 2052 • Ford SM-2C-101 IA SQM-2C9002-AA • Fuller Form 121 • General Motors Pt. no. 88 63 370, 85 476 • Komatsu Dresser B22-0003, B22-0005 • MAN 342 • Mercedes-Benz page 235.0 • Rockwell International 0-76 VME Americas EEMS 19003F • Volvo 97310 • ZF TE-ML 01 • ZF TE-ML 05 • ZF TE-ML 07 • ZF TE-ML 12A



**GENUINE JCB HIGH QUALITY TRANSMISSION FLUIDS GIVE HIGH LEVEL OF WEAR PROTECTION AND ARE SUITABLE FOR A WIDE RANGE OF APPLICATIONS.**

**JCB Optimum Performance Transmission Fluid**

JCB Standard: 4004/6300

Sizes available: 20ltr

A high quality transmission fluid uniquely designed for use on JCB Fastrac machines fitted with V-Tronic transmissions. Its universal properties make it suitable for use in engines, wet brake systems, final drives and hydraulic systems.

**Manufacturers' standards:** API CE/SF/CF • API GL-3/GL-4, ACEA E3 • ZF TE-ML 06B, 06C • MB227.1 • JCB Fastrac (CVT) • AGCO CVT ML 200 • Allison C4 (Auto Trans) • Massey Ferguson CMS M 1135, 1139, 1143, 1144 • John Deere J20C & J27 • Ford M2C134D, M2C159B, M2C159C (STOU) • New Holland NH 03C, NH 024C (STOU), NH 410B, NH420A • CNH MAT 3525, 3526

**JCB Optimum Performance Clutch Fluid**

JCB Standard: 4002/1904

Sizes available: 1ltr

A highly specialised fluid designed for use in JCB Fastrac V-Tronic clutch systems. This fluid is also suitable for power steering, rear axle steering, level control, hydro-pneumatic suspension, shock absorbers, stability and traction systems (ABS/ASR/ASC) and central locking systems. It can also perform in many specialist applications, such as electro-hydraulic cabriolet actuation systems.

**Manufacturers' standards:** JISO 7308 • MAN 3623/93 • Daimler Chrysler MB 345.0 • Opel B 040 0070 • Volkswagen TL 52146

**JCB Transmission Fluid EP 10W**

JCB Standard: 4000/2500

Sizes available: 5ltr, 20ltr, 200ltr, 1000ltr

A high quality transmission lubricant recommended for off-highway, construction and agricultural equipment. Its primary use is in powershift transmissions, final drives, hydrostatic transmissions, torque converters and hydraulic systems.

**Manufacturers' standards:** Caterpillar TO-4 • Allison C-4 • Eaton (certain transmissions, see operating manual)

**JCB Transmission Fluid EP SAE 30**

JCB Standard: 4000/2600

Sizes available: 5ltr, 20ltr, 200ltr, 1000ltr

A high quality transmission lubricant recommended for off-highway, construction and agricultural equipment. Its primary use is in powershift transmissions, final drives, hydrostatic transmissions, torque converters and hydraulic systems.

**Manufacturers' standards:** Caterpillar TO-4 • Allison C-4 • Eaton (certain transmissions, see operating manual)

**JCB Torque Converter Fluid**

JCB Standard: 4000/0200

Sizes available: 5ltr, 20ltr, 200ltr, 1000ltr

A versatile product that is designed to cater for the needs of both engines and transmissions. It is ideal for use in high performance diesel engines where a monograde SAE 10W is required. Rationalisation benefits can be obtained by using it as a gear and transmission lubricant.

**Performance classifications:** API CD/SF/CDII, CCMC G2, PD1 and D2, American military MIL-L-46152-C and MIL-L-2104C

**Manufacturers' standards:** Mercedes-Benz page 227.0 • MAN 270 • Clark Form TLC-25 3M8-83 • DANA Spicer Bulletin 2508-9 • Eaton/Fuller Bulletin 2052 • Voith • ZF TE-ML 03 • Allison C-3 • Caterpillar TO-2

**JCB HP Universal ATF**

JCB Standard: 4000/2300

Sizes available: 5ltr, 20ltr, 200ltr

A versatile product recommended for automatic transmissions and power steering systems, where Dexron IIE and III approved products are acceptable. It is suitable for a variety of applications including: trucks and off-highway equipment.

**Manufacturers' standards:** Dexron ATF Type IIE, III • Ford Mercon M931004 • Allison C-4 • C4-18741793 • Mercedes Benz 236.1, 236.5, 236.9, 236.10, 236.11, 236.12 • MAN 339 type Z-1 and V-1 • ZF TE-ML 02F, 03D, 04D, 11B, 14A, 17C





**JCB GREASES PROVIDE LONG LIFE PROTECTION TO HARD WORKING MACHINERY UNDER EXTREME CONDITIONS. THE COMPREHENSIVE RANGE OPTIMISES MAINTENANCE SCHEDULES HELPING TO REDUCE COSTS IN ALL APPLICATIONS.**

**Special HP Grease**

JCB Standard: 4003/2000

Sizes available: 400g, 12.5kg, 50kg

JCB Special HP Grease is a premium quality extreme pressure grease, recommended for use in arduous operating conditions, such as high temperatures, excessive loading and extensive exposure to water. The sophisticated additive package combines with excellent adhesive properties to give high performance protection to hard working automotive, industrial, agricultural and earthmoving equipment, all year round.

Colour: Blue Soap Type: Lithium Complex NLGI: 2

Drop Point (IP132): 245°C

Working Temperature Range: -20°C to 150°C

**Extreme Performance Hammer Grease**

JCB Standard: 4003/2100

Sizes available: 400g, 12.5kg

JCB Extreme Hammer Grease is a unique formulation aluminium complex grease for use where extremes of pressure and temperature are likely to be encountered. Particularly suited to hammer applications where resistance to water washing and migration may be critical.

Colour: Black Soap Type: Aluminium Complex NLGI: 2

Drop Point (IP132): 250°C

Working Temperature Range: -20°C to 160°C

**Special MPL-EP Grease**

JCB Standard: 4003/1500

Sizes available: 400g, 12.5kg, 50kg

JCB Special MPL-EP Grease is a true multipurpose grease, recommended for a wide range of lubricating duties, such as pivot pins and wheel bearings, where excellent antiwear and antirust performance is required. Its EP additive makes it particularly suitable for the shock load and vibrating conditions found on automotive, industrial, agricultural and earthmoving equipment.

Colour: Brown Soap Type: Lithium NLGI: 2

Drop Point (IP132): 180°C

Working Temperature Range: -20°C to 130°C

**Extreme Performance Moly Grease**

JCB Standard: 4003/1300

Sizes available: 400g, 12.5kg

JCB Extreme Performance Moly Grease is an advanced performance, multipurpose grease, recommended for heavily loaded bearing surfaces and in particular where limited or oscillating motion causes fretting. The addition of molybdenum disulphide provides extra protection against scoring and wear, making it ideal for automotive, industrial, agricultural and earthmoving equipment.

Colour: Grey black Soap Type: Lithium NLGI: 2

Drop Point (IP132): 185°C

Working Temperature Range: -20°C to 120°C

**Special Hammer Grease**

JCB Standard: 4003/1100

Sizes available: 400g

JCB Special Hammer grease provides a highly effective lubricant on slow moving slides, along with an excellent corrosion resistant property. It combines the "self healing" action of oils with the resistance to drip of viscous compounds.

Colour: Dark grey Soap Type: Lithium NLGI: 2

Drop Point (IP132): 185°C

Working Temperature Range: -15°C to 120°C

**Special Slide Grease**

JCB Standard: 4003/1100

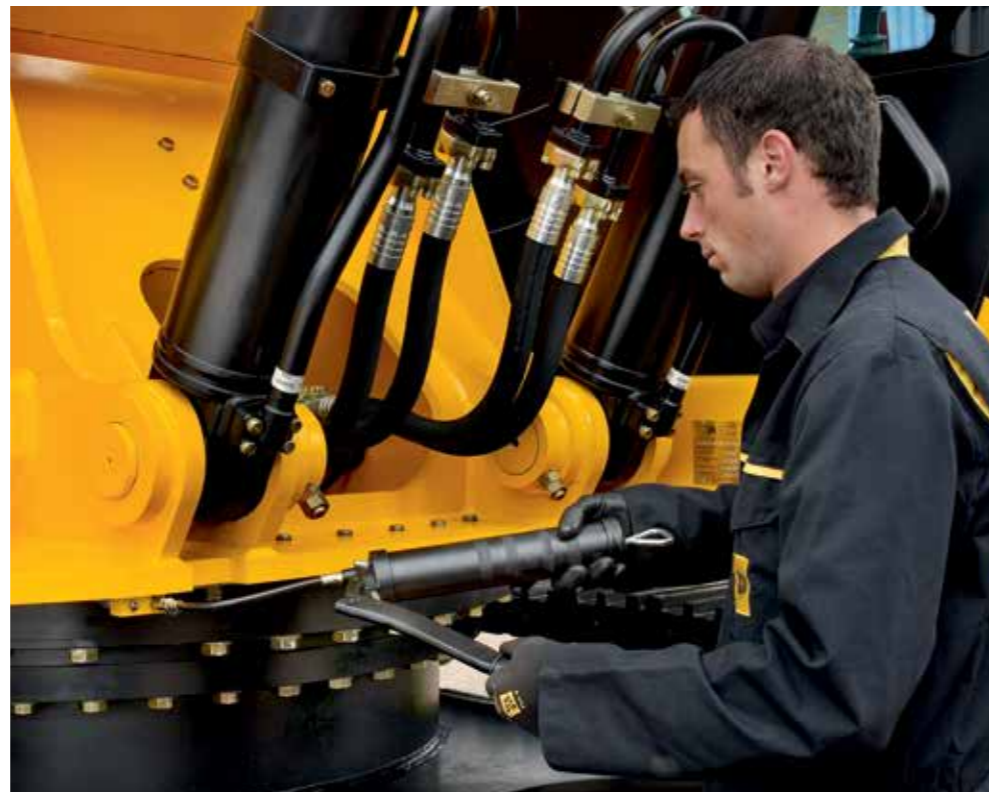
Sizes available: 400g

JCB Special Slide Grease is formulated to provide excellent protection under heavy load and extreme pressure, where water and dirt are prevalent. It maintains a film of lubrication on slow moving slides by combining excellent resistance to squeeze out with superb corrosion resistance.

Colour: Dark grey Soap Type: Lithium NLGI: 2

Drop Point (IP132): 180°C

Working Temperature Range: -20°C to 120°C



**JCB Autogrease**

JCB Standard: 4003/2300

Sizes available: 500g

JCB AUTOGREASE is for use with the JCB AUTOGREASE system, used on JCB's large breaker range. This mineral oil based paste, containing an aluminium complex soap and solid lubricants, is suitable for use under water, or in high ambient temperatures. The specially designed cartridges screw into the AUTOGREASE system fitted to the breaker housing. The clear cartridge allows the operator to easily monitor the grease usage from within the cab.

Colour: Black Soap Type: Aluminium Complex, solid lubricants NLGI: 2

Drop Point (IP132): 260°C

Working Temperature Range: -20°C to 110°C

**Special Slew Pinion Grease**

JCB Standard: 4003/1600

Sizes available: 400g

JCB Special Slew Pinion Grease is a soft, black, tenacious grease designed specifically for the lubrication of large and heavy-duty open gears. Excellent corrosion protection and load carrying properties throughout a large temperature range.

Colour: Black Soap Type: Organically modified clay NLGI: 2

Drop Point (IP132): n/a

Working Temperature Range: -40°C to 100°C



**A COMPREHENSIVE SELECTION OF GENUINE JCB APPROVED LUBRICANT RELATED PRODUCTS IS AVAILABLE FROM YOUR LOCAL JCB DEALER FOR ALL APPLICATIONS.**

**JCB Antifreeze HP/Coolant**

JCB Part numbers: 4006/1101 - 5ltr, 4006/1120 - 20ltr, 4006/1103 - 200ltr

Size available: 5ltr, 20ltr, 200ltr

An ethylene glycol based engine coolant concentrate, tested and proven in heavy duty applications, using established inhibitor technology, it is phosphate and amine free. The sophisticated silicate stabilisation technology eliminates the formulation of silica gel, whilst other additives ensure excellent compatibility with hard water, preventing the build-up of scale. Antifreeze and coolant used in JCB machines must conform to ASTM D6210 standard.

**Manufacturers' standards:** ASTM D3306 • ASTM D4985 • ASTM D6210 • SAE J1034 • BS6580 (1992) • AFNOR NF R15-601

**JCB Readymix HP Antifreeze/Coolant**

JCB Part numbers: 4006/1110 - 5ltr, 4006/1115 - 20ltr, 4006/1125 - 200ltr

Size available: 5ltr, 20ltr, 200ltr

JCB 50/50 antifreeze and engine coolant is an ethylene glycol based solution which combines superior antifreeze and coolant technology with de-mineralised water to provide a quick, easy and efficient solution to your antifreeze and coolant requirements. Ideal in helping prevent the build up of scale where the quality of water supply cannot be guaranteed.

**Manufacturers' standards:** ASTM D3306 • ASTM D4985 • ASTM D6210 • SAE J1034 3 • BS6580 (1992) • AFNOR NF R15-601

**JCB Glass Cleaner**

JCB Part number: 4006/3175

Size available: 750ml spray

Excellent glass cleaning formulation for the removal of grime, oily film and insect debris.

- Anti-smear formula
- Effective on all reflective surfaces
- Brilliant shine

**Brake Fluid DOT 4**

JCB Part number: 4002/0404

Size available: 1ltr

Suitable for virtually all hydraulic and clutch systems, as fitted to passenger cars, commercial vehicles and agricultural machinery. Recommended for use at high operating temperatures generated by disc brakes or when towing.

- Increased safety resulting from anti-vapour lock characteristics
- Good lubricity provides wear protection and trouble free operation
- Metal parts of brake and clutch systems protected against corrosion

**Manufacturers' standards:** FMVSS 116 DOT 3 • FMVSS 16 DOT 4 • SAE J1703

**Waxoyl**

JCB Part numbers: 4004/0501A - 400ml, 4004/0502 - 5ltr, 4004/0505 - 200ltr

Size available: 400ml aerosol, 5ltr, 200ltr

Recommended for use on telescopic booms and extending dippers, this highly effective rustproof is suitable for all plant and machinery. Waxoyl expels moisture and forms a self healing skin to prevent rust formation.

- Excellent rust killer
- Years of protection
- Can be used to protect electrical systems from damp

**JCB Chain Lubricant**

JCB Part number: 4004/0237A

Size available: 300ml aerosol

A powerful blend of high penetration lubricant, dewatering agent and corrosion protector. Especially useful for open chain driven gears on agricultural machinery.

- Prolongs chain life by deep penetration into linkages
- Reduces wear by repelling dirt
- Highly effective lubricant and protector

**JCB Special Plantwash**

JCB Part numbers: 4006/2120 - 20ltr, 993/99174 - 200ltr

Size available: 20ltr, 200ltr

JCB Special Plantwash is formulated for use on all types of agricultural, commercial, industrial and earthmoving equipment. It removes dirt, oil, grease and traffic film economically, even when used in cold pressure washers.

- Biodegradable - exceeds EC Standard 82/242
- Use via a hot (max. 60°C) or cold pressure washer
- Can be applied at low pressure for traffic film removal
- Can be used at high pressure for degreasing

**JCB Liquid Maintenance**

JCB Part number: 993/99166

Size available: 400ml aerosol

An ultrafine lubricant with a very high attraction to metal surfaces. Displaces and repels surface moisture and dust.

- Free seized bolts
- Expel moisture from electrical components
- Protect stored tools against corrosion

**JCB Screenclear**

JCB Part number: 4006/0504

Size available: 1ltr

This multi purpose product can be used to de-ice when sprayed neat, or diluted and used as a screenwash.

- Protects down to -75°C
- Removes traffic film, asphalt, oil and traces of insects
- Does not harm paintwork or window rubbers

**JCB High Performance Anti-Squawk Fluid**

JCB Part number: 4004/3904

Size available: 1ltr

A performance supplement for gear oils designed to suppress brake chatter and squawk.

- Fully approved for use on JCB machines
- Specially developed for machines fitted with oil immersed brakes

**JCB Hydraulic Anti-Stick Additive**

JCB Part number: 4004/6704

Size available: 1ltr

JCB Anti Stick Additive is specially designed to relieve the 'stick slip' phenomena that can occur with most hydraulic systems. Its friction modifier properties are designed to aid the flow characteristics of the hydraulic system and help relieve the hydraulic cylinder noise that often accompanies 'stick slip'. It is designed for hydraulic systems only and should not be used in common hydraulic, brake and transmission systems.

**JCB Cleaner & Degreaser**

JCB Part number: 4104/1557

Size available: 400ml aerosol

A general purpose solvent based parts cleaner.

- Removes most grease, oils and fines
- Leaves no residue
- Ideal for pre-bonding/sealing

**JCB Penetrating Fluid + Graphite**

JCB Part number: 891/04021

Size available: 400ml aerosol

Penetrating fluid with added graphite.

- Penetrates into rust & corrosion
- Eases stripping & dismantling
- Displaces moisture

**JCB Silicone Lubricant**

JCB Part number: 891/04022

Size available: 400ml aerosol

Ideal for use on metal, vinyl, rubber, etc.

- Lubricates bearings, slides, conveyors, etc.
- Anti-static and non-stick, corrosion resistant



**JCB Electrical Cleaner**

JCB Part number: 891/04023

Size available: 300ml aerosol

For cleaning electrical switchgear and motors.

- Solvent cleaner removes grease, oil and dirt
- Rapid evaporation, leaves no residue

**JCB Maintenance Spray**

JCB Part number: 891/04024

Size available: 400ml aerosol

High specification multipurpose spray.

- Protects switchgear
- Gives lasting protection to metal surfaces from corrosion

**JCB Wire Rope & Chain Lubricant**

JCB Part number: 891/04025

Size available: 400ml aerosol

Penetrating anti-fling wire rope and chain lubricant.

- For use on drive chains, fork lift truck masts and motor cycle chains

**JCB White Grease + PTFE**

JCB Part number: 891/04026

Size available: 400ml aerosol

For infiltrating and lubricating close tolerance assemblies.

- Seals against air, moisture, salt water and other corrosive elements

**JCB Cockpit Shine**

JCB Part number: 891/04027

Size available: 400ml aerosol

Brings vinyl, polished wood and veneer back to sparkling appearance.

- Especially effective on black metal work

**JCB Degreaser Spray**

JCB Part number: 891/04029

Size available: 400ml aerosol

Engine degreasant quickly dissolves dirt, oil and grease.

- For use also on plant, machinery, parts, all degreasing applications



**HIGH QUALITY JCB ACCESSORIES FOR THE SAFE HANDLING AND DELIVERY OF LUBRICANT PRODUCTS.**

**30 litre Granule bag**

JCB Part number: 891/02070

- For dealing with leaks and spills, absorbs oils, coolants, solvents and other non-aggressive solvents
- Lightweight, fast absorbency

**18kg Absorbent granules bag**

JCB Part number: 891/02059

- Inert, non-flammable, for all workplace spillages

**Grease gun**

JCB Part numbers: 992/11300 - standard grip

992/11305 - pistol grip

- Designed to suit 400gm grease cartridges

**Barrel tap**

JCB Part number: 990/00077

- Fitted with locking lever
- 3/4 inch pipe thread



**Oil sampling test kit**

JCB Part number: 998/10423

Complete with:

- Instructions for use
- Instructions for return of sample and receipt of your test report.
- Sample bottle
- Prepaid postage tube for sample return



**UJ greasing tool**

JCB Part number: 892/00913

- For use in conjunction with 992/11300 Grease Gun, for those difficult to reach greasing applications

**Measuring jugs**

JCB Part numbers: 990/89800 - 1.5ltr, 990/89900 - 5ltr

Sizes available: 1.5ltr, 5ltr

- Moulded in tough polythene
- Unaffected by oil, petrol, diesel, paraffin, antifreeze, brake fluid, battery acid, etc.
- Easy measurement of oil



**Submersible refuelling pump kit**

JCB Part number: 121/10400

- Delivers high volume 1090 litres/hour (240 gallons/hour)
- No effort involved - works from 12 volt battery
- Handles both diesel and oil. Kit includes lead with crocodile clips, hose and plug for direct connection into beacon socket or protrusion plate light socket
- NB: Not designed to run dry

**Oil cans**

JCB Part number: 990/90200

Size available: 1 pint

- Supplied with rigid and flexible spouts

JCB Part number: 891/02044

Size available: 500ml

- Supplied with flexible spout only



**Super jumbo refuelling pump**

JCB Part number: 990/89700

- Delivers high volume 2100 litres/hour (460 gallons/hour)

- Handles both diesel and oil from barrels
- Hand operated, easy to use
- Dual Thread
- Steel Construction

**Barrel closure key**

JCB Part number: 990/00080

- Removes the bung from steel or plastic drums



**Funnels**

JCB Part numbers: 990/90000 - 6in (150mm), 990/90100 - 9in (230mm)

- Complete with removable flexible spouts



**Rotary barrel pump**

JCB Part number: 990/89600

- Capable of handling a wide variety of liquids
- Will deliver and retrieve
- Delivers up to 840 litres/hour

**Grease pump**

JCB Part number: 993/79300


- Designed to suit 12.5kg kegs






**General purpose wipes ('Rags-in-a-Bag')**

JCB Part number: 891/02040

- Weight 10kg
- Various types of material including cotton and towelling for wiping and polishing

**RANGE**

	1 litre	5 litres	20 litres	200 litres	IBC 1000 litres	Bulk 1000 litres (UK)
						
JCB Universal Agricultural Oil			4004/0305	4004/0302	4004/0345	4004/0315
JCB Engine Oil UP 15W40		4001/2901	4001/2905	4001/2903	4001/2945	
JCB Engine Oil OP 15W40		4001/2801	4001/2805	4001/2803	4001/2845	
JCB Engine Oil EP 15W40		4001/1801	4001/1805	4001/1803	4001/1845	4001/1815
JCB Engine Oil HP 15W40		4001/1501	4001/1505	4001/1503	4001/1545	4001/1515
JCB Engine Oil HP 20W50			4001/1905	4001/1903		
JCB Engine Oil HP 10W30		4001/1701	4001/1705	4001/1703	4001/1745	
JCB Engine Oil HP SAE30		4001/0302	4001/0305	4001/0301		
JCB Cold Climate Engine Oil EP 5W40		4001/2701	4001/2705	4001/2703	4001/2745	
JCB Hydraulic Fluid OP 46		4002/2001	4002/2005	4002/2003	4002/2045	
JCB Hydraulic Fluid EP 46			4002/1605	4002/1603	4002/1645	4002/1615
JCB Hydraulic Fluid HP 46		4002/0801	4002/0805	4002/0803	4002/0845	4002/0815
JCB Biodegradable Hydraulic 46 Fluid			4002/2605	4002/2603	4002/2645	
JCB Hydraulic Fluid UP 32			4002/2805	4002/2803		
JCB Hydraulic Fluid HP 32		4002/1001	4002/1025	4002/1024	4002/1045	4002/1015
JCB Hydraulic Fluid HP 15	4002/0501	4002/0503				
JCB Hydraulic Fluid OP 68		4002/2701	4002/2705	4002/2703	4002/2745	
JCB Hydraulic Fluid HP 68			4002/0705	4002/0701		
JCB Gear Oil OP		4000/3701	4000/3705	4000/3703	4000/3745	
JCB Gear Oil EP 85W140			4000/0605	4000/0603	4000/0645	4000/0615
JCB Gear Oil EP 80W90			4004/5105	4004/5103		
JCB Gear Oil HP			4000/0505	4000/0503		
JCB Gear Oil HP Plus		4000/2202	4000/2205	4000/2203	4000/2245	4000/2215
JCB Gear Oil HP 90		4000/0301	4000/0305	4000/0303	4000/0345	4000/0315
JCB Gear Oil LS Plus		4000/3901	4000/3905	4000/3903	4000/3945	
JCB HP Universal ATF		4000/2301	4000/2305	4000/2303		
JCB Transmission Fluid EP 10W		4000/2501	4000/2505	4000/2503	4000/2545	
JCB Transmission Fluid EP SAE 30		4000/2601	4000/2605	4000/2603	4000/2645	
JCB Torque Converter Fluid		4000/0202	4000/0205	4000/0203	4000/0245	
JCB Transmission Fluid OP			4004/6305			
JCB Clutch Fluid OP	4002/1904					

	400g	500g	12.5kg	50kg	Aerosols	
						
Special MPL-EP Grease	4003/1501		4003/1506	4003/1510	JCB Penetrating Fluid + Graphite	891/04021
Special HP Grease	4003/2017		4003/2006	4003/2005	JCB Silicone Lubricant	891/04022
Extreme Performance Moly Grease	4003/1327		4003/1326		JCB Electrical Cleaner	891/04023
Special Slide Grease	4003/1115				JCB Maintenance Spray	891/04024
Special Hammer Grease	4003/1119				JCB Wire Rope & Chain Lubricant	891/04025
Extreme Performance Hammer Grease	4003/2107		4003/2106		JCB White Grease + PTFE	891/04026
JCB Autogrease		4003/2305			JCB Cockpit Shine	891/04027
Special Slew Pinion Grease	4003/1619				JCB Degreaser Spray	891/04029

	300ml	400ml	1 litre	5 litres	20 litres	200 litres
						
JCB Antifreeze HP/Coolant				4006/1101	4006/1120	4006/1103
JCB Readymix Antifreeze HP/Coolant				4006/1110	4006/1115	4006/1125
JCB Plantwash					4006/2120	993/99174
Waxoyl		4004/0501A		4004/0502		4004/0505
JCB Screenclear			4006/0504			
JCB Hydraulic Anti-Stick Additive			4004/6704			
JCB High Performance Anti-Squawk Fluid			4004/3904			
Brake Fluid DOT 4			4002/0404			
JCB Liquid Maintenance		993/99166				
JCB Chain Lubricant	4004/0237A					
JCB Glass Cleaner			4006/3175 (750ml)			
Oil Sampling Test Kit	998/10423					
JCB Cleaner/Degreaser		4104/1557				

## VALUE ADDED

JCB'S WORLDWIDE CUSTOMER SUPPORT IS FIRST CLASS. WHATEVER YOU NEED AND WHEREVER YOU ARE, WE'LL BE AVAILABLE QUICKLY AND EFFICIENTLY TO HELP MAKE SURE YOUR MACHINERY IS PERFORMING TO ITS FULL POTENTIAL.



1

1 Our Technical Support Service provides instant access to factory expertise, day or night, while our Finance and Insurance teams are always on hand to provide fast, flexible, competitive quotes.

2 JCB Assetcare offers comprehensive extended warranties and service agreements, as well as service-only or repair and maintenance contracts. Irrespective of what you opt for, our Maintenance teams around the world charge competitive labour rates, and offer non-obligation quotations as well as fast, efficient insurance repair work.

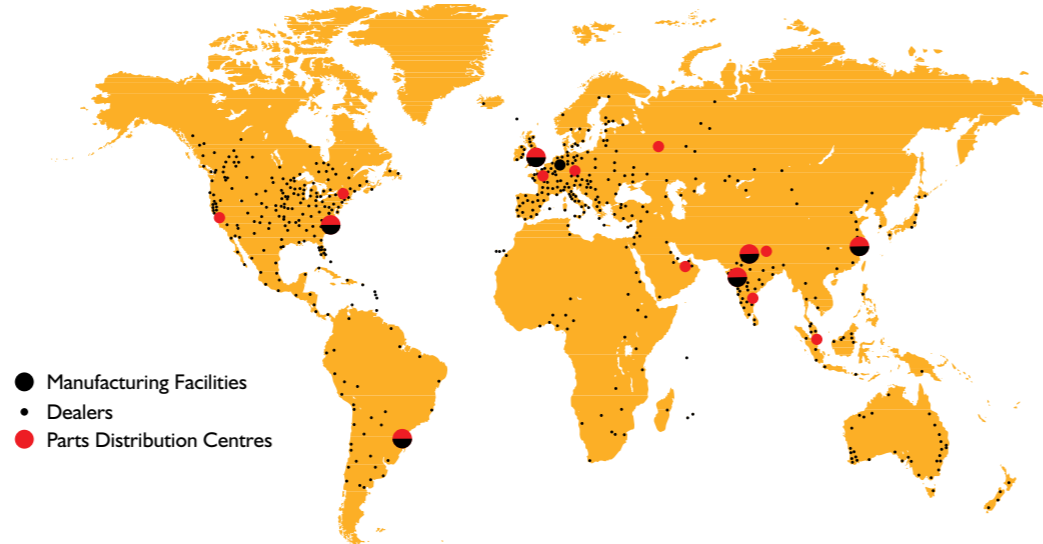


3

3 The global network of JCB Parts Centres is another model of efficiency; with 15 regional bases, we can deliver around 95% of all parts anywhere in the world within 24 hours. Our genuine JCB parts are designed to work in perfect harmony with your machine for optimum performance and productivity.



4



Note: JCB LIVELINK and JCB ASSETCARE may not be available in your region, so please check with your local dealer.

## LIVELINK, KNOWLEDGE IS POWER

JCB LIVELINK IS AN INNOVATIVE SOFTWARE SYSTEM THAT LETS YOU MONITOR AND MANAGE YOUR MACHINES REMOTELY - ONLINE, BY EMAIL OR BY MOBILE PHONE.

LIVELINK GIVES YOU ACCESS TO A WHOLE HOST OF USEFUL DATA, INCLUDING MACHINE ALERTS, FUEL REPORTS\* AND EVENT HISTORY INFORMATION. ALL YOUR MACHINE INFORMATION IS HANDLED AT A SECURE DATA CENTRE FOR YOUR PEACE OF MIND.

### Productivity and cost benefits

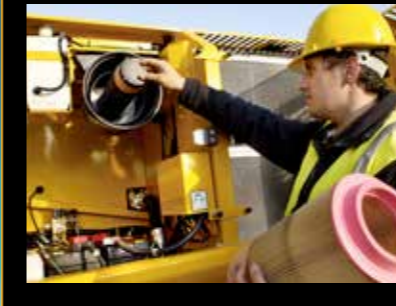
For ultimate productivity and cost-saving, JCB LiveLink provides information like idle time monitoring\* and machine fuel consumption\* to help reduce your fuel usage. Machine location information can improve fleet efficiency and you may even enjoy reduced insurance costs courtesy of the added security that LiveLink brings.

\* These features require an electronic engine.



### Maintenance benefits

JCB LiveLink makes it easy to manage machine maintenance. Accurate hours monitoring and service alerts improve maintenance planning, and real-time location data helps you manage your fleet. You'll also have access to critical machine alerts and maintenance history records.



### Security benefits

Keep your machine operating safely with JCB LiveLink. Real-time geofencing alerts tell you when machines move out of predetermined operating zones, and real-time curfew alerts inform you if machines are being used when they're not supposed to be. Real time location information helps you store your machines in the safest places.





Your nearest JCB dealer



**JCB Lubricants**

JCB Service, Beamhurst Road, Uttoxeter, Staffordshire ST14 5PA. Tel: 01889 590312. Fax: 01889 593624.  
[www.jcb.com](http://www.jcb.com)

©2012 JCB Service. All rights reserved. No part of this publication may be reproduced, stored in a retrieval system, or transmitted in any form or by any other means, electronic, mechanical, photocopying or otherwise, without prior permission from JCB Service. JCB reserves the right to change specifications without notice. Illustrations and specifications shown may include optional equipment and accessories. The JCB logo is a registered trademark of J. C. Bamford Excavators Ltd.

**JCB Lubricants. No compromise.**

