

qualtrics.





Qualtrics Training Administration and Staff Event



Sam Raleigh

Academic Client Success Manager

- Marriott School of Management, Advisement
- Franklin Covey, Education Practice
- Business Management, Marriott School of Management

Inspire staff and administration
to know how to use Qualtrics to make their job
easier and increase their impact.



Let's get to know you...

<https://goo.gl/AJ92MY>
Report



Get the insights you need
to make data-driven decisions.

The World's Leading Insight Platform



PROVO / USA
DUBLIN / IRL
SYDNEY / AUS
SEATTLE / USA

6.6K+

Brands & Organizations

99

of the top 100
business schools

1.8M+

Users

Used In
75+

Countries



What is Qualtrics?

Qualtrics Research Suite's online survey solutions make it easy to capture academic insights. These insights empower faculty and students, create breakthroughs, and change lives. Your imagination is the only limit.

- Academic Research
- Experimental Design
- Student Satisfaction
- Alumni Outreach
- Program Administration
- Institutional Assessment
- Course and Professor Evaluation
- Student and faculty elections

umn.qualtrics.com

Qualtrics Products



Research Suite



Qualtrics Vocalize



Site Intercept



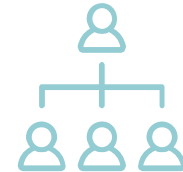
Target Audience



Online Sample



Qualtrics 360



Employee Engagement

BENEFITS

- Award-winning training and support
- Real-time reporting
- Professional services
- Open APIs – data warehouse / CRM

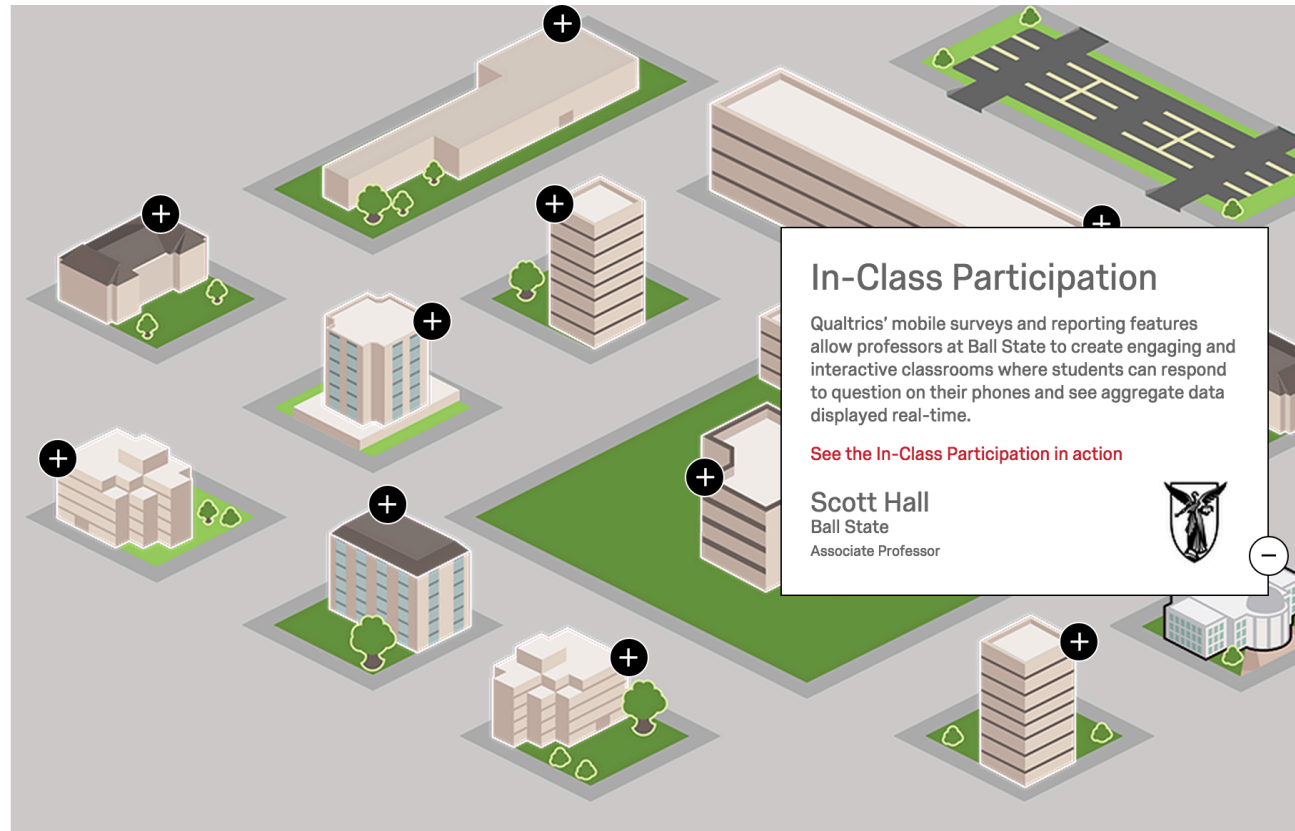
How can I use Qualtrics to make our jobs easier and increase our impact?



Success Stories



Expert content, professional services, turnkey solutions. Everything you need to gather insights—all in one place.



<http://www.qualtrics.com/innovation-exchange/campus/>

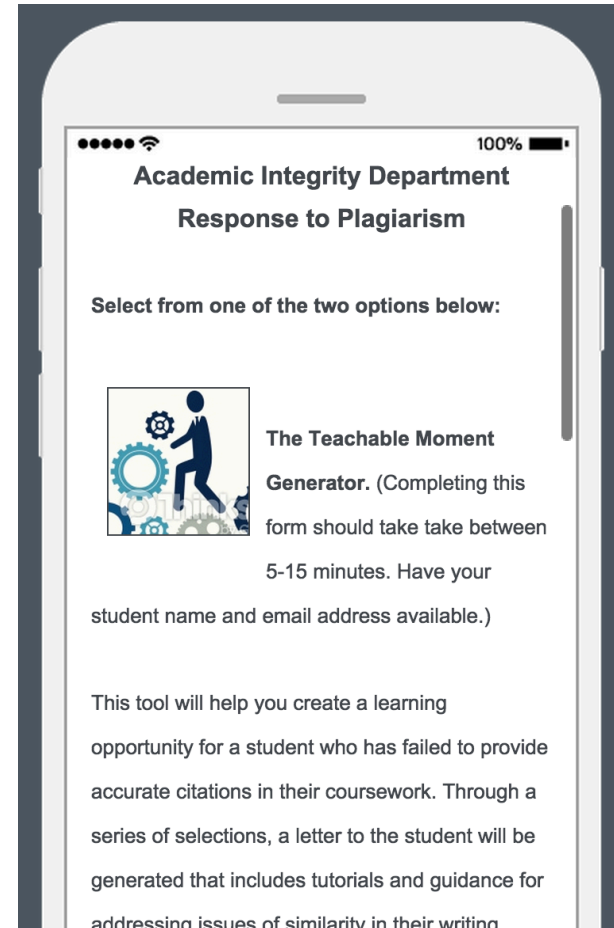


Ashford University

Teachable Moment Generator

Academic Department Chair, Technology and Innovation

The Teachable Moment Generator will have some dramatic impacts on the success of students who are not intentionally plagiarizing but don't have the skills to properly cite and quote using APA formatting.





Find available internships by the qualification you are currently studying

What are you currently studying? Bachelor of Business Studies

Internship location(s) Auckland

Internship host(s) RA Manufacturing

Position Available Accounts and payroll

Please upload a copy of your resume to forward to your selected internship host.
(Note: use File upload question type feature to allow respondents to upload a copy of their C.V. However this feature is currently not available in the standard Qualtrics license)

Massey University

Internship Database

Student Engagement and Evaluation


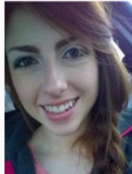
Qualtrics' display logic allows Massey University to build a single internship directory that customizes the available internships shown to students based on their selected program of study.



Missouri State

FAQ & Content Scheduler

Qualtrics' branching logic, embedded media functionality, and logic-based email triggers allow Missouri State to create a centralized and interactive FAQ form and contact scheduler.

<p>Email: ula3@missouristate.edu Elizabeth's BearCLAW Hours: Friday 12-1</p>	<p>Email: ula4@missouristate.edu Morgan's BearCLAW Hours: Saturday 11-12</p>
<p>Niki Enlow (Group 5 ULA)</p>  <p>Email: ula5@missouristate.edu Niki's BearCLAW Hours: Monday 2:30-3:30</p>	<p>Zoe Ellis (Group 6 ULA)</p>  <p>Email: ula6@missouristate.edu Zoe's BearCLAW Hours: Thursday 4-5</p>

Would you like to set up a one-on-one appointment or prefer a return email?

I would like to set up an appointment
I would like a return email

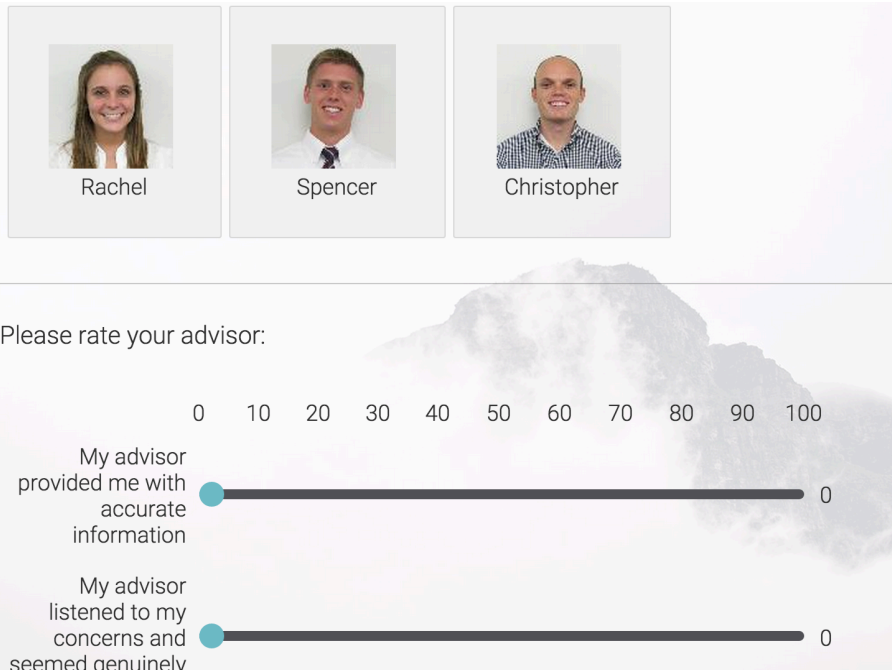


Brigham Young University

Student Feedback System

Academic Advisement Center

Developed an automatic system to track students as they come into the advisement center and provide feedback and training for individual advisors and improve the entire student experience.





UT Tyler Graduate Admissions

Admissions Evaluations

The survey instantly generates a response based on the prospective student's information. Once a student has used the Profile Evaluator, their contact information is captured and imported into the CRM. This allows them to receive emails from UT Tyler's communication plan, which includes both program and profile specific emails.

The scores you provided match that of other successful candidates! While this is not a guarantee of acceptance, your profile indicates that you stand a good chance of gaining an admission at UT Tyler*. To apply, please visit uttyler.edu/graduate and select the Apply Now button.

*Because some programs accept only a limited number of students, or do not have the faculty or facilities to accommodate a student's particular area of study, some applicants who exceed minimum requirements may not be accepted.

Want to chat online? Live Chat 8-5pm CST, M-F



The UT Tyler Graduate Admissions Staff
ADM 345
903-566-7457
ogs@uttyler.edu
uttyler.edu/graduate



Discussion

What are the current
ways you are using Qualtrics?

Discussion

How can you become
more student obsessed?
Innovate? Simplify process?

What is one thing I
can do to use Qualtrics to make
our jobs easier and increase our impact?



Resources

- Innovation Exchange
- Qualtrics University
- Qualtrics Resource Library
- Live/Recorded Webinars
- Qualtrics Survey Library

The image shows a composite of two screenshots from the Qualtrics website. The top screenshot is the 'Resource Library' page, which features a red header with the text 'Resource Library' and 'Stay up to date by learning from today's top industry pros'. Below the header are social media icons for Facebook, Twitter, LinkedIn, YouTube, Google+, and Instagram. A navigation bar includes categories like 'All Resources', 'Customer Insights', 'Employee Insights', and 'Market Insights'. The main content area displays a grid of resource cards for 'The Ultimate VoC Starter Kit', 'Rewarding Your Own Panel', 'Engaging Your Own Panel', 'Recruiting Your Own Panel', 'The Essential Web Experience Playbook', and 'Assess Technology Management's Impact On Employee Performance And Flow'. A large banner for 'Qualtrics University Support and Training' is also visible, featuring a search bar and a 'Learn More' button. The bottom screenshot shows the 'My Surveys' dashboard with a red arrow pointing to the 'Create Survey' button. Below this is the 'Survey Library' section, which asks 'How would you like to create your survey?' and offers options for 'Quick Survey Builder', 'Create from Copy', and 'Survey Library'.



Q&A