

General Information

Stage Dimensions	4,294 SF	Acting Studio (Drama Room)	881 SF	Men's Dressing Rooms:	-
Scene Shop/ Loading	1,357 SF	Vocal Studio (Chorus Room)	1,235 SF	+ Principal	203 SF
Orchestra Seating	727	Music Lab (Music Room)	1,637 SF	+ Chorus	310 SF
Balcony Seating	363	Band Lab (Band Room)	2,339 SF	Women's Dressing Rooms:	-
Main Lobby	3,486 SF	Piano Lab	884 SF	+ Principal	203 SF
Balcony Lobby	2,652 SF			+ Chorus	328 SF

TECHNICAL NOTES AT A GLANCE

Proscenium height 29'9"	SR door 10'4"w x 11'10" h	400A, 200A & 100A Company Switches
Single purchase counterweight system with 40 linesets @ 6" centers	Loading Dock doors (x2) 9'1"w x 12'4" h	ETC ion console with ETC Sensor dimmers, Yamaha M7CL with Meyer Sound Speakers

GENERAL

The Venice Performing Arts Center (VPAC) is an 1090 seat proscenium theatre designed by [SchenkelShultz Architecture](#) and built by [Gilbane Building Company](#) as part of the rebuild of Venice High School. VPAC's construction was financed through an interlocal agreement between the Sarasota County School Board and The City of Venice and is supported by The Gulf Coast Community Foundation and The Venice Institute for Performing Arts (VIPA). The hall is home to the Venice High School performing arts department and three resident arts organizations: [The Venice Symphony](#), [The Venice Concert Band](#) and [The Venice Chorale](#).

DIMENSIONS	
Proscenium Opening	50'-0" wide, 30'0" high
Stage Depth @ Plasterline	35'-0"
Orchestra Pit Depth	8'-0"
Stage Height from Orchestra House Floor	3'-0"
Stage Floor to Fly Gallery Lock Rail	30'-0"
Stage Floor to Loading Bridge	61'-0"
Stage Floor to Gridiron	66'-0"
Stage Floor to Roof Support Beams	75'-8"

FLOORING DESCRIPTION

The VPAC stage floor, in order of construction, includes a concrete foundation, resilient vapor barrier, rubber spring pads, 2 layers of ¾" plywood, and is topped with 3/16" Masonite. The loading dock and receiving area is concrete flooring with two 6" wide aluminum transition strips between it and the stage.

RIGGING

The VPAC has a single purchase counterweight fly system with two locking rails and a loading rail located stage left. The locking rails are equipped with white and blue index lights. The upper fly rail is pin rail equipped with belaying pins for spot-line rigging at the mid gallery position. A fire curtain and dedicated house curtain are located immediately upstage of the proscenium. A lineset schedule is in the appendix.

Total number of manual line-sets:	40
Batten Length:	64'-6"
Batten Travel:	60'-0"
Batten Height at Deck Level:	4'-0"
Standard Arbor Height:	9'-0"

PIT LIFT	
The Orchestra pit consists of one platform raised and lowered on 6 Spiralift ND9 columns. It can be set on-level at customized heights, at basement level, or set on-level with the stage to be used as an apron. Access is via stage right stairwell as well as an ADA compliant wheelchair elevator.	
Surface Area	528 square feet
Unit Static Load	125 pounds per square foot
Static Load Capacity	66,000 pounds
Unit Lifting Load	50 pounds per square foot
Lift Load Capacity	26,400 pounds
Lift Speed	4.5 feet per minute
Lift Travel	8'-0"

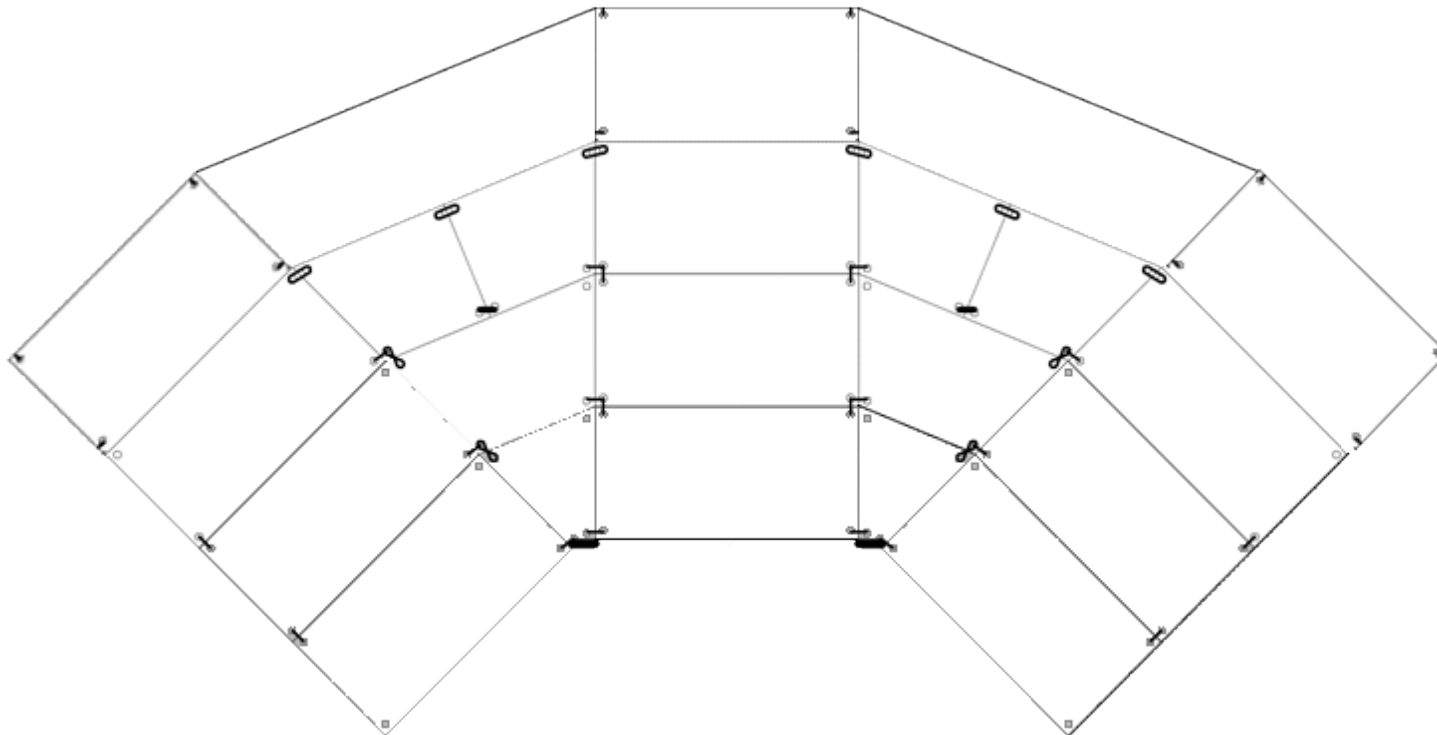
ACOUSTIC CONCERT SHELL
VPAC is equipped with a StageRight Opus II Acoustic Sound Shell System.
Ceilings: There are three StageRight Opus 2 acoustical ceilings with cherry wood finish matched to house trim. They are hung on dedicated manual counterweight linesets. Each ceiling includes nine ETC Source Four PAR light fixtures.
Towers: There are seven StageRight Opus 2 free-standing acoustical towers with a cherry wood finish matched to house trim finish. Each tower is self-supported and movable. They are available as back and side walls. When deployed, the towers are approximately 12'-0" wide and between 25'-0" and 28'-0" high. Each tower's wings have door openings that that are 8'-2" high.

SOFTGOODS					
2	Main Curtain Bi-Part Traveler	30'-0" W x 31'-8" H	25 OZ. IFR Velour	Dove	100% fullness
5	Border	64'-0" W x 10'-0" H	25 OZ. IFR Velour	black	60%
10	Legs	12'-0" W x 31'-8" H	25 OZ. IFR Velour	black	60%
4	Velour Bi-Part Traveler	30'-0" W x 30'-0" H	25 OZ. IFR Velour	black	60%
1	Cyclorama	60'-0" W x 30'-0" H	Seamless Muslin	white	0%
1	Black Scrim	60'-0" W x 30'-0" H	Sharkstooth	black	0%
1	Draper Stagescreen	25'-0" W x 15'-8" H	Fiberglass	Matte white	N/A
1	Fire Curtain	53'-0" W x 32'-0" H	CSC-G2WC	natural	N/A

MISCELLANEOUS RIGGING INFORMATION
VPAC is equipped with 50lb and 100lb sand bags, 5/8" Sta X Black- rope, all legs and borders, scrim and cyc have bottom pipe, and VPAC carries additional bottom pipe (please inquire if we have enough on hand for your production's needs.

LOADING DOCK
The loading dock area has two loading dock doors: 8' wide x 12' high. They are located on the north end of the VPAC and will accommodate two semi-tractor trailers simultaneously. The dock is 4' high and the spaces are equipped with molded dock bumpers and recessed dock levelers that compensate for the differences in height between truck bed and loading dock.

RISER INVENTORY	
12	4' x 8'
12	4' x 4'
4	Complete "Pie" corner configurations (4 levels)
NOTES: All risers are Wenger StageTek with standard black "cracked ice" deck finish. Full complement of 8" fixed legs, 16"-28" Telescoping legs and 32" fixed legs, chair guards and railings.	



LIGHTING CONTROL	
1	ETC ION located in control booth FOH
1	ETC ION 40 channel fader wing
2	Touchscreen panels
1	ETC Remote Focus Unit (RFU)
2	Unison Houselight control modules (1 located in control booth FOH)
1	
NOTES	
ETC net CAT5 connections and nodes located throughout.	

FIXTURES	
1	ETC 405
23	ETC 410
44	ETC 414
32	ETC 419
92	ETC 426
42	ETC 436
6	ETC 450
6	ETC 470
20	Zoom 15-30
20	Zoom 25-50
26	1K AF/mpf Altman Fresnels
27	ETC S4 LED with CYC adapters
2	Lycian Followspot #1275 1200 watt (located in followspot booth FOH)
1	Altman two cell CYC

CABLE	
45	5'-0" 12/3 SO Stage Pin Cable
61	10'-0" 12/3 SO Stage Pin Cable

39	25'-0" 12/3 SO Stage Pin Cable
20	50'-0" 12/3 SO Stage Pin Cable
70	Molded Y TwoFer Stage Pin
10	5'-0" 12/3 SO L5-20 Twistlock cable
10	10'-0" 12/3 SO L5-20 Twistlock cable
8	10'-0" L5-20 Twistlock cable
5	25'-0" L5-20 Twistlock cable
5	50'-0" L5-20 Twistlock cable
10	L6-20 Twistlock cable
10	5' 12/3 SO
10	10' 12/3 SO
13	25' - 6 circ veam
5	65' - 6 circ veam
10	6' SJO Breakout Male Veam Fem Pin

MISCELLANEOUS HARDWARE

20	S4 "A" SANDWICH TEMPLATE HOLDER
10	S4 IRIS
8	50 LB BOOM BASES
8	12'-0" SCHEDULE 40 PIPES with - BOOM TIE OFF CAPS
12	24" DOUBLE T SIDEARMS
24	18" SINGLE T SIDEARMS
24	Spot Block Cast 8" Upright

GEL

5	Lee 255
5	Lee 217
5	Roscolux 54
5	LEE 200P
5	Lee 200
5	Lee 281
5	Lee 255
5	Lee 217
6 sheets	Roscolux 33

6 sheets	Lee 202
8 sheets	Roscolux 119
4 sheets	Roscolux 54
8 sheets	Lee 152
1 sheet	Lee 203
8 sheets	Roscolux 68
4 sheets	Roscolux 55
4 sheets	Roscolux 52
4 sheets	Roscolux 364
2 sheets	Roscolux 114
10 sheets	Roscolux 81
10 sheets	GAM 685
10 sheets	GAM 235
5 sheets	Roscolux 321
5 sheets	Roscolux 385
5 sheets	Roscolux 39

PATTERNS(GOBOS)	
8	GAM #222
2	GAM #201
10	GAM #579
4	GAM #294

MISCELLANEOUS RIGGING	
10	50lb sand bag
10	100 lb sand bag
2	5/8" Sta X Black- 600' spool
52	3/4" ID sched 40 pipe 10'-0" long, threaded each end (for borders, legs, black scrim, and cyclorama bottom pipes)
5	3/4" ID sched 40 pipe 4'-0" long, threaded each end (for borders bottom pipes)

SIGNAL PROCESSING AND AMPLIFICATION				
Brand	Model	Description	Quantity	Notes
Yamaha	M7CL-48	Digital Mixing Console	1	Default located at control booth position.
Behringer	MX 324X	32 input mixer	1	Portable used for monitors or recording mixing
TOA	P-912MK2	Amplifiers	2	
SymNet	12X8 DSP	Digital Signal Processor	2	
Aphex	120A	Audio Distribution Amplifier	1	Controls lobby and backstage intercom and program mics
NOTES				
Audio console may be moved to FOH position.				

AUDIO COMPONENT INPUT				
*Tascam	CD-RW901SL	CD Player/Recorder	2	Rack mount with mixing console
*Tascam	CD200i	CD/iPod Dock Player	1	iPod dock uses lightning connector
Tascam	CD-A500	CD/ Cassette	1	
Denon	DN-C550R	Dual CD recorder	1	
NOTES				
*Units mounted in rack with Yamaha console. Aux patch panel in same rack enables input to record audio and video sources.				
XLR inputs and located throughout stage area, in floor pockets @ apron L,R, C and FOH catwalks.				

PORTABLE AUDIO				
Shure	SM Beta 87A	Microphone	8	UR1 (handheld) and UR2 (MX150B/O lavalier w/ beltpack) UR4D+ rack-mount receivers
Shure	SM58LC	Microphone	4	
Shure	SM57LC	Microphone	4	
Shure	565SD	Microphone	1	
Shure	545SD	Microphone	1	
AKG	C414XLS	Condenser Microphone	1	
Rode	NT4	Stereo Condenser Microphone	1	
Countryman	M4HP5RF18EB	Podium Microphone	1	

Audio-Technica	AT4040	Cardioid Condenser Microphone	1	With shock mount
Audio-Technica	AT4041	Cardioid Condenser Microphone	4	2 flown above house towards stage
Audio-Technica	U853A	Cardioid Hanging Microphone	6	
C-Ducer	CSP/86	Contact Condenser Microphone	1	Suitable for piano/ acoustic instrument applications
Crown	PCC-160	(Floor) Boundry Phase Coherent Mic	4	
Countryman	Type 85	Direct Box	4	
Emtech	EJ10	Multi-Adapter	1	
Whirlwind	PCDI	Direct Box	1	
Audix	DP7	Drum Microphone Kit	7	

INTERCOM				
Clear-Com	RS-601	1 Channel Intercom Belt Pak		
Clear-Com	RS-602	2 Channel Intercom Belt Pak		
Clear-Com	KB-701	Intercom Wall Speaker Station		(w/ handset) Located in dressing rooms and classrooms
Clear-Com	V-Box	Intercom Wall Station Desktop Box	3	May be placed at flexible locations
Clear-Com	CC-95	Single Muff Intercom Headset	6	
Clear-Com	CC-260	Dual Muff Intercom Headset	2	

OUTPUT				
Meyer Sound	CQ-1	Wide Coverage Main Speaker	4	Located in 3 arrays @ center above proscenium and to the L and R of proscenium.
Meyer Sound	CQ-2	Narrow Coverage Main Speaker	4	
Meyer Sound	700-HP	UltraHigh-Power Subwoofer	4	Located in alcoves @ vom positions HR and HL
Meyer Sound	UP-4XP	Ultra Compact Loudspeaker	13	Mounted on apron and in main house under balcony.
JBL	PRX 400	Monitor speakers	4	Speakon connections
Galaxy Audio	HS7	Monitor speakers	4	Speakon connections
NOTES				
Tie-line jacks located SL and SR. Speakon monitor jacks US, SL, SR and in apron floor pockets. ¼" patch panel located in booth.				

VIDEO				
Eiki	LC-HDT1000	Video Projector, 10K ANSI Lumens	1	
Vaddio	ClearVIEW HD-20SE	HD Cameras	2	Located FOH C and in Pit. All control @ booth.
Vaddio		Universal CCU CAT 5 Interface	2	
Denon	DBT-3313UDCI	DVD/ Blu-ray Player (2)	2	
Blackmagic Design		SSD Digital Video Recorder	1	
Video Input Panels			4	HDMI, VGA, RCA, YPbPr, USB HID inputs located SL,

				SR, 2@ booth.
Crestron	V15-TILT	Touchscreen interface	1	Video system and video monitor switcher control

POWER				
LEX	CS-400F-C6DS1	400 Amp, Type 1 Company Switch, 6-wire		Located DSR
LEX	CS-200F-C6DS1	200 Amp, Type 1 Company Switch, 6-wire		Located USR
LEX	CS-100F-C6DS1	100 Amp, Type 1 Company Switch, 6-wire		Located USR
ADDITIONAL POWER	Standard Edison 110V 20A outlets located throughout. Isolated power outlets for audio also located onstage.			

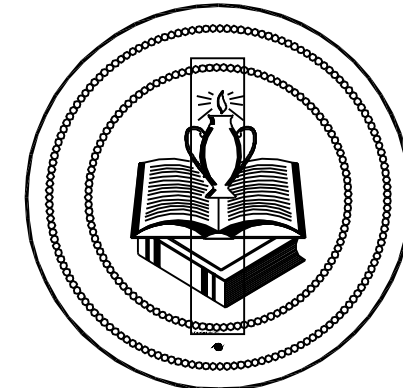
ADDITIONAL SOUND RELATED EQUIPMENT				
Primacoustic	Gotrap	Studio Gobo and Bass Trap Panels	4	
ClearSonic	A4	5-Section drum kit enclosure	1	
ClearSonic	S2D	SORBER sound baffles	4	
ClearSonic	S4-2D	SORBER sound baffles	2	
Atlas Sound	MS-12CE	Microphone Stand-Black	24	
Konig & Meyer	210/9	Microphone Boom Stand	12	
Atlas Sound	DS7E	Microphone Desk Stand	1	
Grace Design	SB-BL	Stereo Bar	1	
Whirlwind		XLR cable	Various lengths up to 100'	

SET NO.	DIST FROM PL	DESIGNATION	BATTEN LENGTH	RIGGING TYPE	NO. OF LINES	CAPACITY	
FC	0'-3"	FIRE CURTAIN	53'-0" (2)	MOTORIZED	6	1,500 LB	
1	1'-2"	MAIN CURTAIN	64'-6"	MANUAL CWT	7	2,000 LB	
2	1'-10"	#1 BORDER	64'-6"	MANUAL CWT	7	2,000 LB	
3	2'-6"	#1 LEGS	64'-6"	MANUAL CWT	7	2,000 LB	
4	3'-2"	#1 ELECTRIC	64'-6" (2)	MANUAL CWT	8	2,000 LB	
5	3'-10"		64'-6"	MANUAL CWT	7	2,000 LB	
6	4'-6"		64'-6"	MANUAL CWT	7	2,000 LB	
7	5'-2"	PROJECTION SCREEN	64'-6"	MANUAL CWT	7	2,000 LB	
8	5'-10"		64'-6"	MANUAL CWT	7	2,000 LB	
9	7'-2"	#1 CONCERT CEILING	64'-6" (2)	MANUAL CWT	8	2,000 LB	
10	8'-6"		64'-6"	MANUAL CWT	7	2,000 LB	
11	9'-2"	#2 BORDER	64'-6"	MANUAL CWT	7	2,000 LB	
12	9'-10"	#2 LEGS	64'-6"	MANUAL CWT	7	2,000 LB	
13	10'-6"	#2 ELECTRIC	64'-6" (2)	MANUAL CWT	8	2,000 LB	
14	11'-2"		64'-6"	MANUAL CWT	7	2,000 LB	
15	11'-10"		64'-6"	MANUAL CWT	7	2,000 LB	
16	12'-6"		64'-6"	MANUAL CWT	7	2,000 LB	
17	13'-2"	#3 BORDER	64'-6"	MANUAL CWT	7	2,000 LB	
18	13'-10"	#3 LEGS	64'-6"	MANUAL CWT	7	2,000 LB	
19	15'-2"	#2 CONCERT CEILING	64'-6" (2)	MANUAL CWT	8	2,000 LB	
20	16'-6"	MIDSTAGE TRAVELER	64'-6"	MANUAL CWT	7	2,000 LB	
21	17'-2"		64'-6"	MANUAL CWT	7	2,000 LB	
22	17'-10"	#3 ELECTRIC	64'-6" (2)	MANUAL CWT	8	2,000 LB	
23	18'-6"		64'-6"	MANUAL CWT	7	2,000 LB	
24	19'-2"		64'-6"	MANUAL CWT	8	2,000 LB	
25	19'-10"		64'-6"	MANUAL CWT	7	2,000 LB	
26	20'-6"	#4 BORDER	64'-6"	MANUAL CWT	7	2,000 LB	
27	21'-2"	#4 LEGS	64'-6"	MANUAL CWT	7	2,000 LB	
28	22'-6"	#3 CONCERT CEILING	64'-6"	MANUAL CWT	7	2,000 LB	
29	23'-10"	#4 ELECTRIC	64'-6" (2)	MANUAL CWT	8	2,000 LB	
30	25'-2"	#5 BORDER	64'-6"	MANUAL CWT	7	2,000 LB	
31	25'-10"	#5 LEGS	64'-6"	MANUAL CWT	7	2,000 LB	
32	26'-6"	SCRIM	64'-6"	MANUAL CWT	7	2,000 LB	
33	27'-2"	#5 (CYC) ELECTRIC	64'-6" (2)	MANUAL CWT	8	2,000 LB	
34	27'-10"		64'-6"	MANUAL CWT	7	2,000 LB	
35	28'-6"	REAR TRAVELER	64'-6"	MANUAL CWT	7	2,000 LB	
36	29'-2"		64'-6"	MANUAL CWT	7	2,000 LB	
37	29'-10"		64'-6"	MANUAL CWT	7	2,000 LB	
38	30'-6"		64'-6"	MANUAL CWT	7	2,000 LB	
39	31'-2"		64'-6"	MANUAL CWT	7	2,000 LB	
40	31'-10"	CYCLORAMA	64'-6"	MANUAL CWT	7	2,000 LB	

NAME	LOCATION	# OF CIRCUITS	FIRST CIRCUIT #	LAST CIRCUIT #	120 V CIRCUIT #	208 V CIRCUIT #
PB-1	BALCONY RAIL	3	1	3		
PB-2	BALCONY RAIL	3	4	6		
PB-3	BALCONY RAIL	4	7	9		1
PB-4	BALCONY RAIL	6	10	12	1 & 2	2
PB-5	BALCONY RAIL	4	13	15		3
PB-6	BALCONY RAIL	3	16	18		
PB-7	BALCONY RAIL	3	19	21		
LCS-1	FAR CATWALK LEFT	6	22	27		
LCS-2	FAR CATWALK LEFT CENTER	7	28	33	3	
LCS-3	FAR CATWALK CENTER	7	34	39		4
LCS-4	FAR CATWALK RIGHT CENTER	7	40	45	4	
LCS-5	FAR CATWALK RIGHT	6	46	51		
LCS-6	NEAR CATWALK LEFT	6	52	57		
LCS-7	NEAR CATWALK LEFT CENTER	7	58	63	5	
LCS-8	NEAR CATWALK CENTER	7	64	69		5
LCS-9	NEAR CATWALK RIGHT CENTER	7	70	75	6	
LCS-10	NEAR CATWALK RIGHT	6	76	81		
PB-8	HOUSE LEFT UPPER BOX BOOM	6	82	86		6
PB-9	HOUSE LEFT UPPER BOX BOOM	6	87	91	7	
PB-10	HOUSE LEFT LOWER BOX BOOM	6	92	96		7
PB-11	HOUSE LEFT LOWER BOX BOOM	6	97	101	8	
PB-12	HOUSE RIGHT UPPER BOX BOOM	6	102	106		8
PB-13	HOUSE RIGHT UPPER BOX BOOM	6	107	111	9	
PB-14	HOUSE RIGHT LOWER BOX BOOM	6	112	116		9
PB-15	HOUSE RIGHT LOWER BOX BOOM	6	117	121	10	
LCS-11	#1 ELECTRIC	32	122	151		10 & 11
LCS-12	#2 ELECTRIC	32	152	181		12 & 13
LCS-13	#3 ELECTRIC	32	182	211		14 & 15
LCS-14	#4 ELECTRIC	32	212	241		16 & 17
LCS-15	#5 ELECTRIC	24	242	265		
PB-16	DOWN STAGE RIGHT	9	266	272	11	18
PB-17	DOWN STAGE LEFT	9	273	279	12	19
PB-18	UP STAGE RIGHT	10	280	287	13	20
PB-19	UP STAGE LEFT	10	288	295	14	21
PB-20	REAR WALL RIGHT	8	296	303		
PB-21	REAR WALL LEFT	8	304	311		
FP-1	ORCHESTRA PIT	2	312	313	15	22
FP-2	ORCHESTRA PIT	2	314	315	16	22
MD-1	GIJB-1	6	316	321		

circuit distribution chart

NAME	LOCATION	# OF CIRCUITS	FIRST CIRCUIT #	LAST CIRCUIT #	120 V CIRCUIT #	208 V CIRCUIT #
MD-2	GIJB-2	6	322	327		
MD-3	GIJB-3	6	328	333		
MD-4	GIJB-4	6	334	339		
MD-5	GIJB-5	6	340	345		
MD-6	GIJB-9	6	346	351		
MD-7	GIJB-10	6	352	357		
MD-8	GIJB-11	6	358	363		
MD-9	GIJB-12	6	364	369		
MD-10	GIJB-13	6	370	375		
DB-1	GIJB-1	-			17 & 18	
DB-2	GIJB-2	-			19 & 20	
DB-3	GIJB-3	-			21 & 22	
DB-4	GIJB-4	-			23 & 24	
DB-5	GIJB-5	-			25 & 26	
DB-6	GIJB-9	-			27 & 28	
DB-7	GIJB-10	-			29 & 30	
DB-8	GIJB-11	-			31 & 32	
DB-9	GIJB-12	-			33 & 34	
DB-10	GIJB-13	-			35 & 36	
GIJB-11	ORCHESTRA CEILING	3	376	378		
GIJB-12	ORCHESTRA CEILING	3	379	381		
GIJB-13	ORCHESTRA CEILING	3	382	384		



CONSTRUCTION SERVICES DEPARTMENT
7895 FRUITVILLE ROAD
SARASOTA, FLORIDA 34240
phone (941) 361-6680 fax (941) 361-6684

DRAWN BY: -
DATE DRAWN: -
CHK'D BY: -
BUILDING NO: -
FLOOR NO: -
S.C.S.B. PROJ. NO: 3225
ARCH/ENG. PROJ. NO: 0920127

THIS AREA FOR BUILDING OFFICIAL USE/ APPROVAL

ARCHITECT / ENGINEER / DESIGN PROF. OF RECORD:

REVISION	DATE	DESCRIPTION
1	August 15, 2011	Phase 2 Vertical Construction

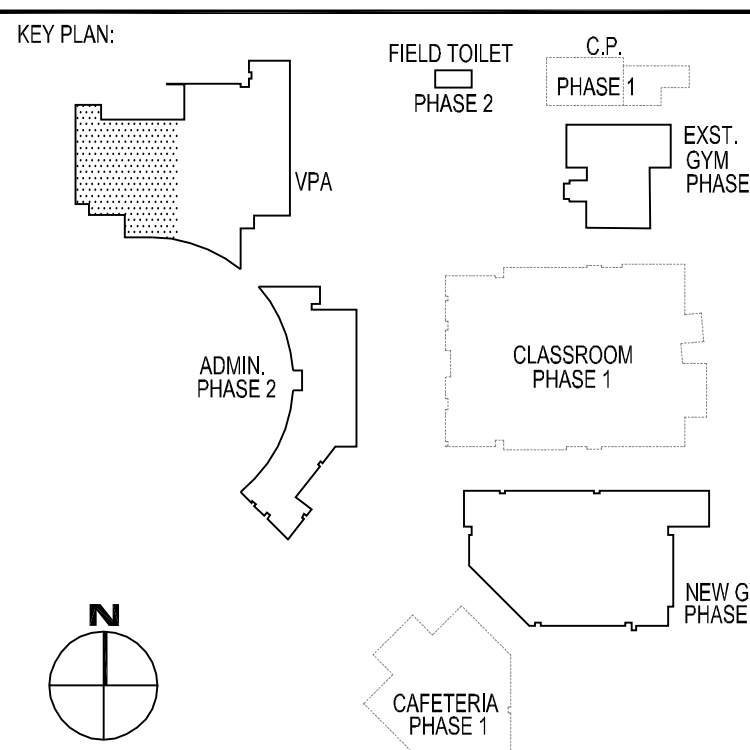
SCHENKELSHULTZ
ARCHITECTURE
677 N. Washington Blvd.
Sarasota, FL 34236
voice (941) 952-5875
fax (941) 957-3630
schenkelshultz.com
SS Lic No - AA-C000937

CONFIDENTIAL COPYRIGHT 2011 SCHENKELSHULTZ INC.
THIS DRAWING IS THE PROPERTY OF SCHENKELSHULTZ INC. AND IS NOT TO BE REPRODUCED OR TRANSMITTED IN ANY FORM OR BY ANY MEANS, ELECTRONIC OR MECHANICAL, INCLUDING PHOTOCOPYING, RECORDING, OR BY ANY INFORMATION STORAGE AND RETRIEVAL SYSTEM, WITHOUT THE WRITTEN PERMISSION OF SCHENKELSHULTZ INC. ANY UNAUTHORIZED REPRODUCTION OR TRANSMISSION OF THIS DRAWING IS STRICTLY PROHIBITED. THE USER OF THIS DRAWING AGREES TO HOLD SCHENKELSHULTZ INC. HARMLESS FROM AND AGAINST ALL CLAIMS, DAMAGES, LOSSES AND EXPENSES, INCLUDING REASONABLE ATTORNEY'S FEES, THAT MAY BE ASSERTED AGAINST SCHENKELSHULTZ INC. BY ANY THIRD PARTY AS A RESULT OF THE USER'S USE OF THIS DRAWING. THE USER OF THIS DRAWING AGREES TO INDEMNIFY AND HOLD SCHENKELSHULTZ INC. HARMLESS FROM AND AGAINST ALL CLAIMS, DAMAGES, LOSSES AND EXPENSES, INCLUDING REASONABLE ATTORNEY'S FEES, THAT MAY BE ASSERTED AGAINST SCHENKELSHULTZ INC. BY ANY THIRD PARTY AS A RESULT OF THE USER'S USE OF THIS DRAWING.

RECEIVED

Feb 08, 2012

Gilbane Building Co.



PROJECT INFORMATION:

VHS PHASE 2

Phase 2 Vertical Construction

1 Indian Avenue

Venice, Florida 34285

SHEET DESCRIPTION:

EQUIPMENT PLAN
- VPA
ORCHESTRA

DATE PLOTTED: 15.08.2011

CAD DWG FILE: A1101-5 EQUIPMENT

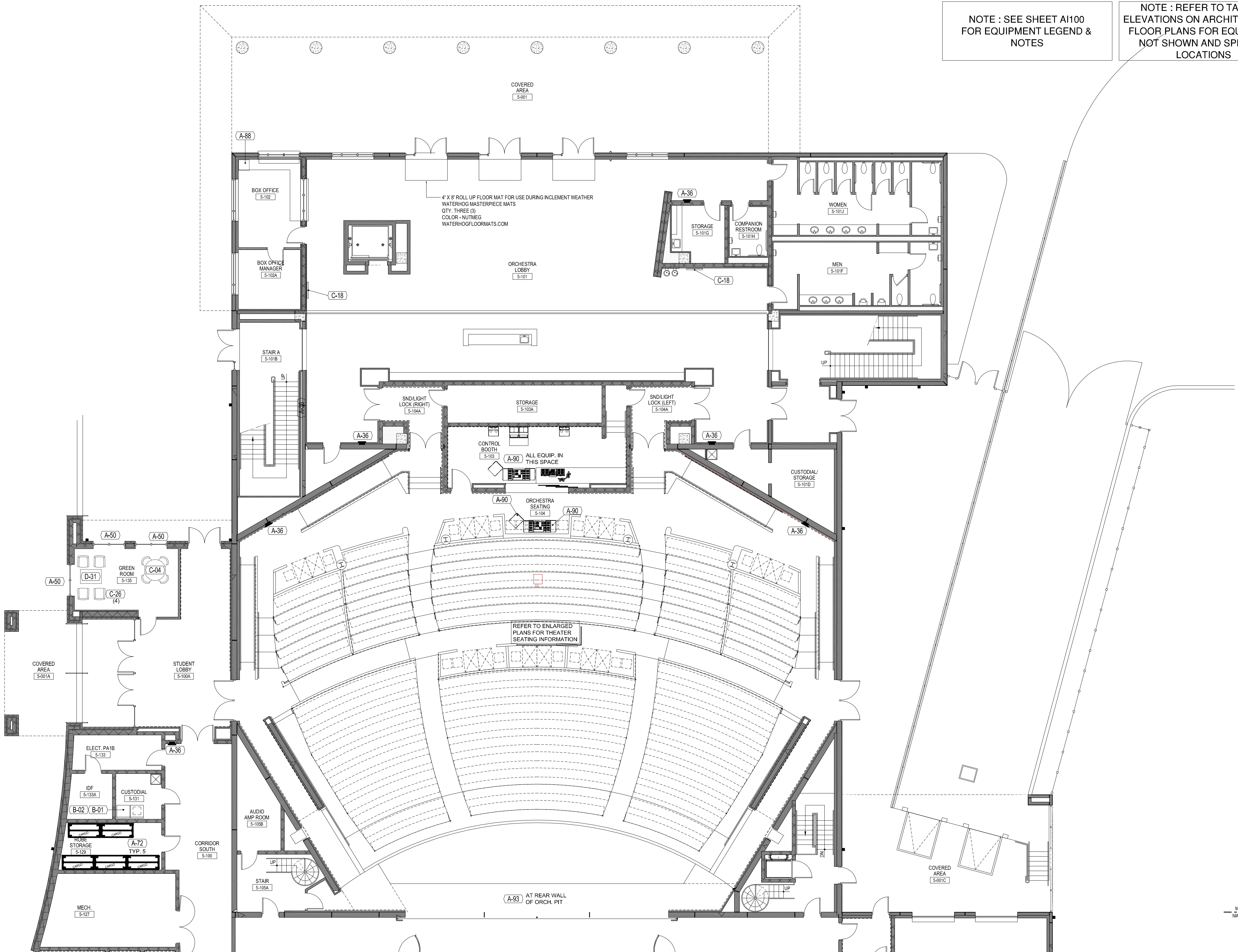
SHEET: ORCHESTRA.dwg

A1101-5

THIS SHEET IS A PRELIMINARY DRAWING AND IS NOT TO BE USED FOR CONSTRUCTION. IT IS THE USER'S RESPONSIBILITY TO OBTAIN NECESSARY APPROVALS FROM THE APPROPRIATE AGENCIES.

NOTE : SEE SHEET A1100
FOR EQUIPMENT LEGEND &
NOTES

NOTE : REFER TO TAGGED
ELEVATIONS ON ARCHITECTURAL
FLOOR PLANS FOR EQUIPMENT
NOT SHOWN AND SPECIFIC
LOCATIONS



EQUIPMENT PLAN - VPA 1ST FLOOR








1/8" = 1'-0"

DRAWN BY:	-
DATE DRAWN:	-
CHK'D BY:	-
BUILDING NO:	-
FLOOR NO:	-
S.C.S.B. PROJ. NO:	3225
ARCH/ENG. PROJ. NO:	0920127

THIS AREA FOR BUILDING OFFICIAL USE/APPROVAL

ARCHITECT / ENGINEER / DESIGN PROF. OF RECORD:

[illegible]

HULTZ 
JURE 






677 N. Washington Blvd.
Sarasota, FL 34236
voice (941) 952-5875
fax (941) 957-3630
schenkelshultz.com
SS Lic No - AA-C000937

SCS JENKINS & ARCHITECTS

CONFIDENTIAL, COPYRIGHT 2010 SCS JENKINS & ARCHITECTS
1000 WEST 10TH AVENUE, SUITE 1000 DENVER, COLORADO 80202

PHYSICAL DESIGN OF THE CONCEPT AND ALL OTHER DESIGN SHALL REMAIN UNPUBLISHED AND NOT BE REPRODUCED OR TRANSMITTED IN ANY FORM OR BY ANY MEANS, ELECTRONIC OR MECHANICAL, INCLUDING PHOTOCOPYING, RECORDING, OR BY ANY INFORMATION STORAGE AND RETRIEVAL SYSTEM, WITHOUT THE WRITTEN PERMISSION OF SCS JENKINS & ARCHITECTS. ANY REPRODUCTION OR TRANSMISSION OF ANY PART OF THIS DOCUMENT IS PROHIBITED. ANY VIOLATION OF THIS AGREEMENT SHALL BE SUBJECT TO THE PENALTIES PROVIDED BY LAW.

SCS JENKINS & ARCHITECTS, ITS AGENTS, AND ITS SUBSIDIARIES SHALL NOT BE RESPONSIBLE FOR ANY DAMAGE, LOSS, OR INJURY, INCLUDING REASONABLE ATTORNEY'S FEES, ARISING OUT OF OR FROM THE USE OF THIS DOCUMENT OR THE INFORMATION CONTAINED HEREIN, EVEN IF SUCH DAMAGE, LOSS, OR INJURY WAS FORESEEABLE.

THIS DOCUMENT IS THE PROPERTY OF SCS JENKINS & ARCHITECTS. IT IS TO BE USED ONLY FOR THE PROJECT AND SITE SPECIFICALLY IDENTIFIED HEREIN. IT IS NOT TO BE REPRODUCED OR TRANSMITTED IN ANY FORM OR BY ANY MEANS, ELECTRONIC OR MECHANICAL, INCLUDING PHOTOCOPYING, RECORDING, OR BY ANY INFORMATION STORAGE AND RETRIEVAL SYSTEM, WITHOUT THE WRITTEN PERMISSION OF SCS JENKINS & ARCHITECTS. ANY REPRODUCTION OR TRANSMISSION OF ANY PART OF THIS DOCUMENT IS PROHIBITED. ANY VIOLATION OF THIS AGREEMENT SHALL BE SUBJECT TO THE PENALTIES PROVIDED BY LAW.

THIS DOCUMENT IS THE PROPERTY OF SCS JENKINS & ARCHITECTS. IT IS TO BE USED ONLY FOR THE PROJECT AND SITE SPECIFICALLY IDENTIFIED HEREIN. IT IS NOT TO BE REPRODUCED OR TRANSMITTED IN ANY FORM OR BY ANY MEANS, ELECTRONIC OR MECHANICAL, INCLUDING PHOTOCOPYING, RECORDING, OR BY ANY INFORMATION STORAGE AND RETRIEVAL SYSTEM, WITHOUT THE WRITTEN PERMISSION OF SCS JENKINS & ARCHITECTS. ANY REPRODUCTION OR TRANSMISSION OF ANY PART OF THIS DOCUMENT IS PROHIBITED. ANY VIOLATION OF THIS AGREEMENT SHALL BE SUBJECT TO THE PENALTIES PROVIDED BY LAW.

RECEIVED

Feb 08, 2012

Gilbane Building Co.

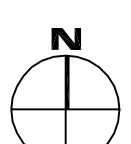
KEY PLAN:

VPA

FIELD TOILET
PHASE 2

C.P.
PHASE 1

EXST. GYM
PHASE 2



PROJECT INFORMATION:

VHS PHASE 2

Phase 2 Vertical Construction
Indian Avenue

Venice, Florida 34285

EQUIPMENT PLAN

- VPA

ORCHESTRA

DATE PLOTTED: 15.08.2011

CAD DWG FILE: AI101A-5

SHEET: EQUIPMENT PLAN -
VPA ORCHESTRA.dwg

AI101A-5

THIS SHEET IS HAS BEEN MADE TO FIT A 50 X42 PAPER SIZE -PRINTING TO OTHER SIZES WILL NOT BE TO SCALE

NOTE : SEE SHEET AI100
FOR EQUIPMENT LEGEND &
NOTES

NOTE : REFER TO TAGGED
ELEVATIONS ON ARCHITECTURAL
FLOOR PLANS FOR EQUIPMENT
NOT SHOWN AND SPECIFIC
LOCATIONS

MATCH LINE: A1101-5
MATCH LINE: A1101A-5

MATCH LINE: A1101-5
MATCH LINE: A1101A-5

1 EQUIPMENT PLAN - VPA 1ST FLOOR
1/8" = 1'-0"

DRAWN BY: ACM
DATE DRAWN: 6.29.2011
CHK'D BY: RC
BUILDING NO:
FLOOR NO:
S.C.S.B. PROJ. NO: 3225
ARCH/ENG. PROJ. NO: 0920127

THIS AREA FOR BUILDING OFFICIAL USE/APPROVAL

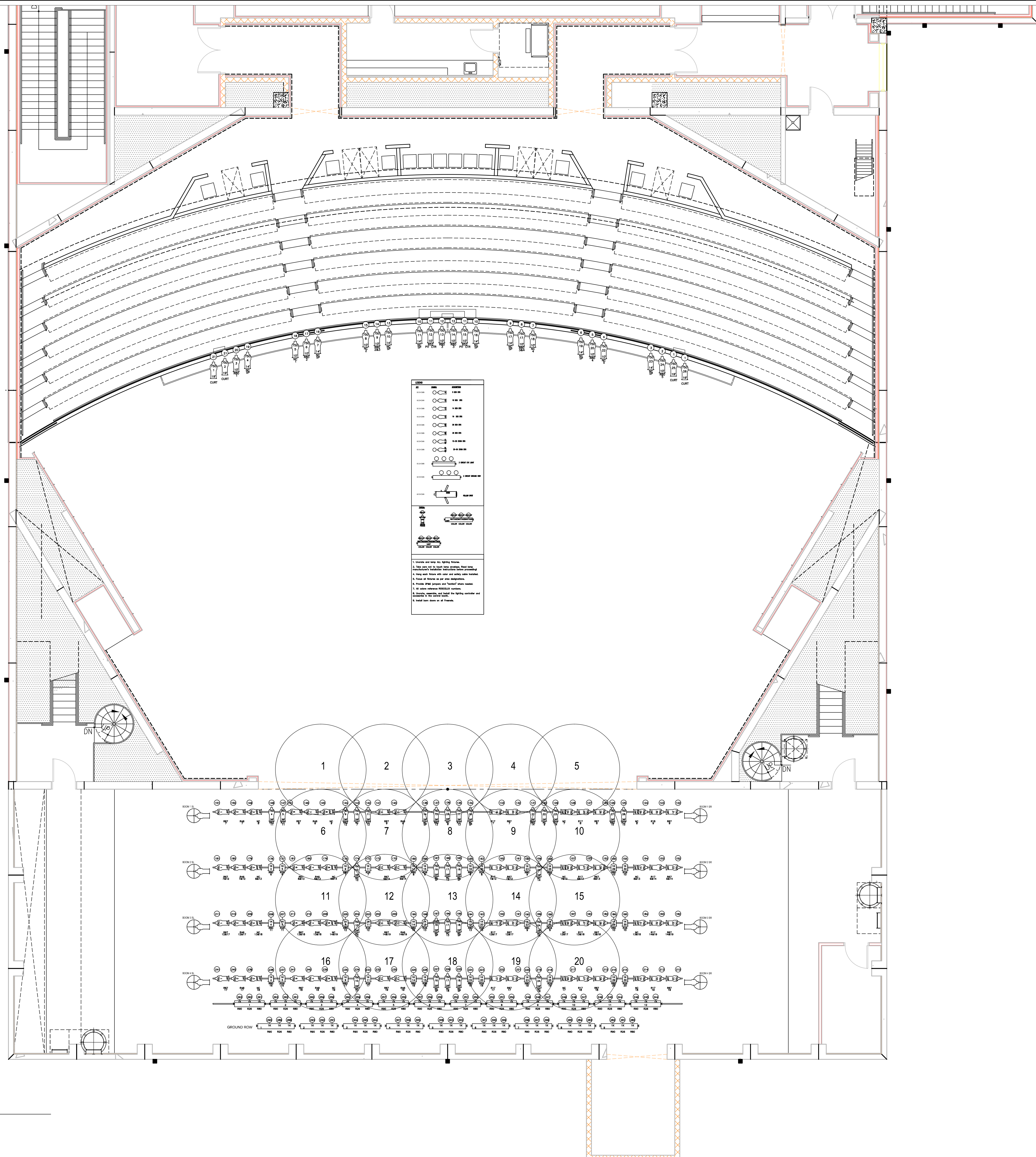
ARCHITECT / ENGINEER / DESIGN PROF. OF RECORD:

[illegible][illegible]

A site plan of the proposed school building layout. The plan includes a north arrow pointing upwards. The building layout consists of several interconnected structures: a large rectangular building on the left labeled 'VPA'; a smaller rectangular building to its right labeled 'FIELD TOILET' and 'C.P.'; a rectangular building below the VPA labeled 'ADMIN. PHASE 2'; a large rectangular building in the center labeled 'CLASSROOM PHASE 1'; a rectangular building to the right of the classroom building labeled 'EXST. GYM PHASE 2'; a rectangular building below the classroom building labeled 'NEW GYM PHASE 2'; and a rectangular building at the bottom labeled 'CAFETERIA PHASE 1'. The buildings are outlined in black, and the surrounding area is white.

TH-101

THIS SHEET HAS BEEN MADE TO FIT A 30 X42 PAPER SIZE - PRINTING TO OTHER SIZES WILL NOT BE TO SCALE



1 LIGHT PLOT
TH-101 SCALE: 3/16"=1'-0"

DRAWN BY: ACM
DATE DRAWN: 6.29.2011
CHK'D BY: RC
BUILDING NO:
FLOOR NO:
S.C.S.B. PROJ. NO: 3225
ARCH/ENG. PROJ. NO: 0920127

THIS AREA FOR BUILDING OFFICIAL USE/APPROVAL

ARCHITECT / ENGINEER / DESIGN PROF. OF RECORD:

[illegible][illegible]

Feb 08, 2012

KEY PLAN:

VPA

ADMIN. PHASE 2

FIELD TOILET

PHASE 2

C.P. PHASE 1

EXST. GYM PHASE 2

CLASSROOM PHASE 1

NEW GYM PHASE 2

CAFETERIA PHASE 1

N

PERFORMANCE
LIGHTING
SYSTEM LIGHT
PLOT- CATWALKS

TH-102

THIS SHEET HAS BEEN MADE TO FIT A 30 INCH PAPER SIZE. PRINTING TO OTHER SIZES WILL NOT BE TO SCALE

DRAWN BY: ACM
DATE DRAWN: 6.29.2011
CHK'D BY: RC
BUILDING NO:
FLOOR NO:
S.C.S.B. PROJ. NO: 3225
ARCH/ENG. PROJ. NO: 0920127

ARCHITECT / ENGINEER / DESIGN PROF. OF RECORD:

[illegible][illegible]

Gilbane Building Co.

KEY PLAN:

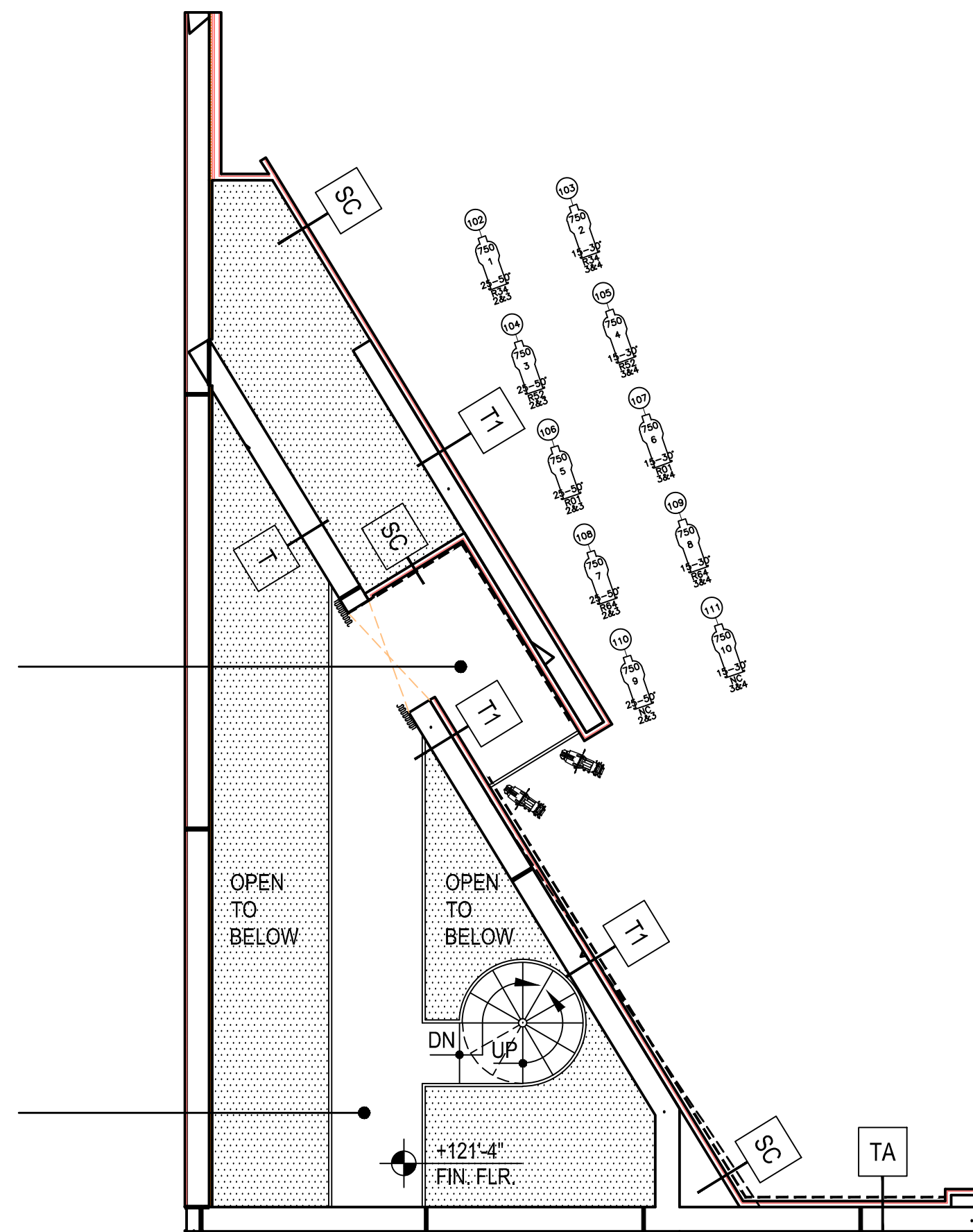
The key plan shows the layout of the proposed school. The rooms and their phases are:

- FIELD TOILET PHASE 2
- G.P. PHASE 1
- EXST. GYM PHASE 2
- VPA
- ADMIN. PHASE 2
- CLASSROOM PHASE 1
- NEW GYM PHASE 2
- CAFETERIA PHASE 1

A north arrow is located in the bottom left corner of the plan.

DATE PLOTTED: 08/15/2011
CAD DWG FILE: VHS PAC 100 CD 8-11 submission TH-103
SHEET: 3 OF 6

TH-103



Architectural section drawing of a building facade. The drawing shows a sloped roof structure with various components labeled 1 through 8. A north arrow indicates a 109° 4' orientation from the finished floor. A circular feature labeled 'DN' is shown below the roofline, with an arrow pointing 'UP'. A 'TA' label is at the bottom right.

Technical drawing of a four-bay building elevation. The drawing shows a symmetrical structure with four bays. Each bay features a central window with a height of 7'-6" and a width of 3'-6". The windows are flanked by side walls, each with a height of 7'-0" and a width of 3'-6". The total height of the building is 11'-0". The drawing includes a scale bar at the bottom right indicating 1'-0".

3 LIGHT PLOT
TH-101 SCALE: 3/4"=1'-0"

THIS AREA FOR BUILDING OFFICIAL USE/APPROVAL

ARCHITECT / ENGINEER / DESIGN PROF. OF RECORD:

[illegible][illegible]

KEY PLAN:

VPA

ADMIN. PHASE 2

FIELD TOILET
PHASE 2

C.P.
PHASE 1

EAST GYM
PHASE 2

CLASSROOM
PHASE 1

NEW GYM
PHASE 2

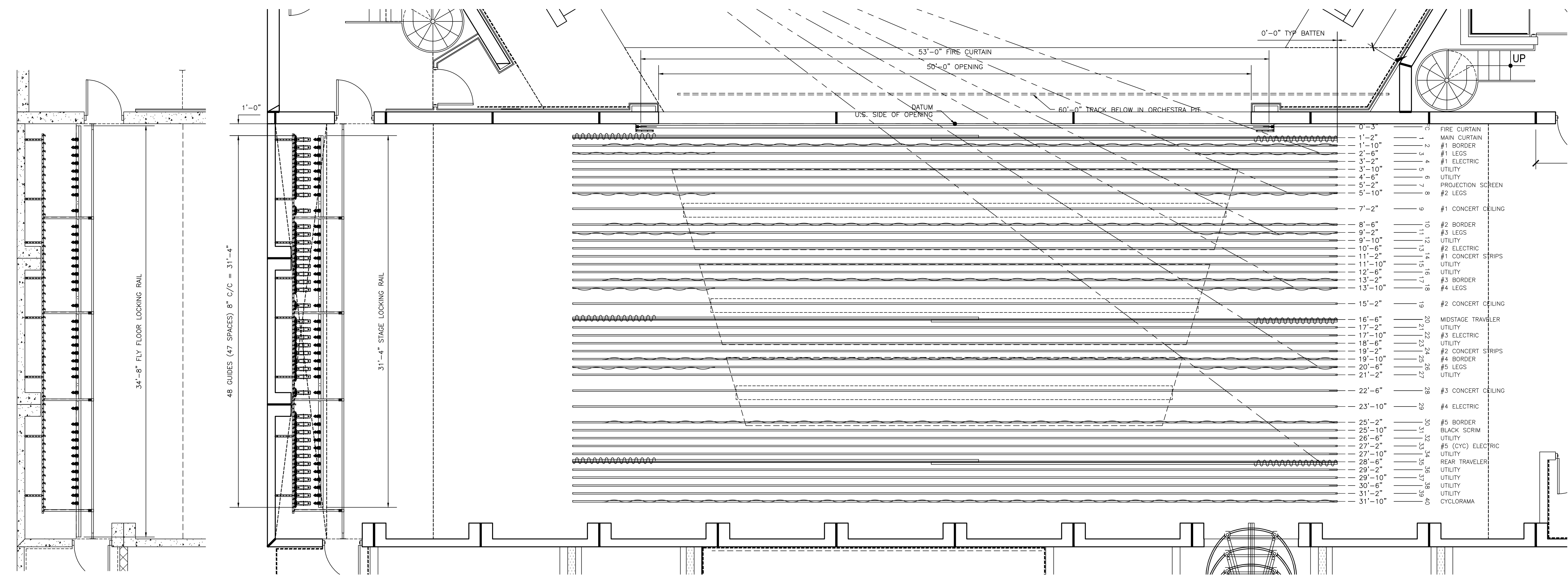
CAFETERIA
PHASE 1

N

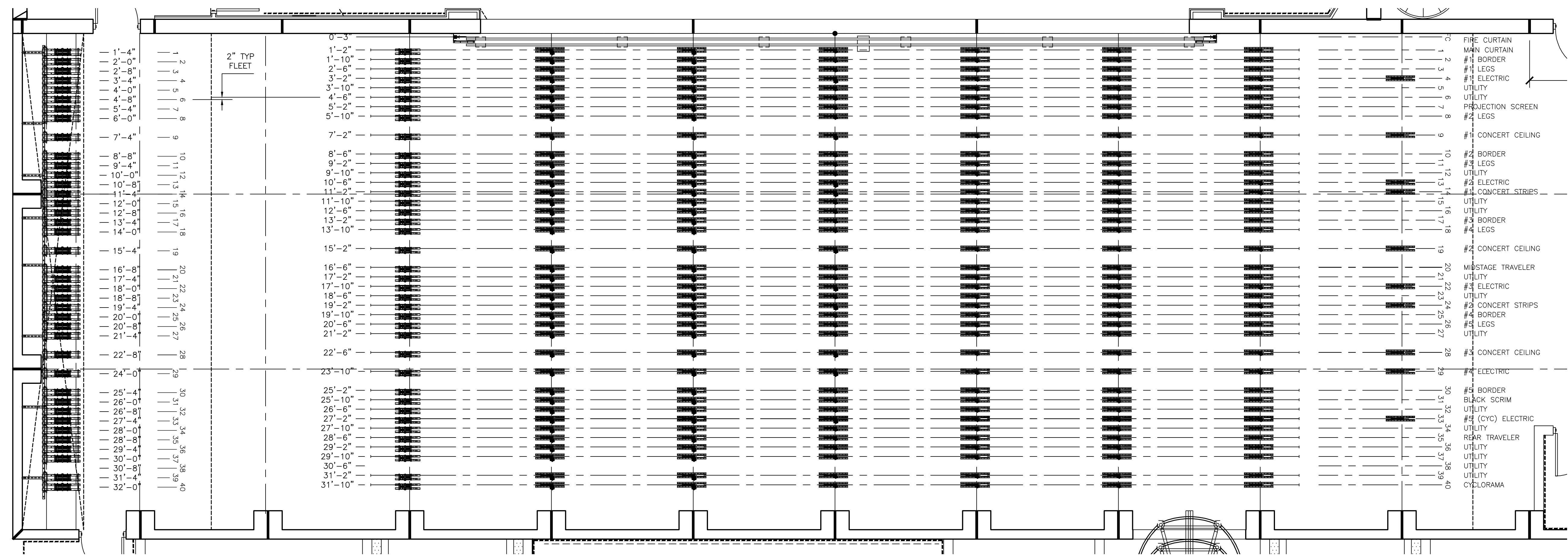
DATE PLOTTED: 08/15/2011
CAD DWG FILE: VHS PAC 100 CD 8-11 submission STG
SHEET: 1 RIG OF: 5 SHELL 8-9

TH-301

THIS SHEET HAS BEEN MADE TO FIT A 30 X 32 PAPER SIZE - PRINTING TO OTHER SIZES WILL NOT BE TO SCALE



2 PLAN AT STAGE FLOOR
SCALE: 1/4"=1'-0"



3 BLOCK PLAN AT ROOF STEEL
SCALE: 1/4"=1'-0"

DRAWN BY: SCS
DATE DRAWN: 6.29.2011
CHK'D BY: RC
BUILDING NO:
FLOOR NO:
S.C.S.B. PROJ. NO: 3225
ARCH/ENG. PROJ. NO: 0920127

ARCHITECT / ENGINEER / DESIGN PROJ. OF RECORD

677 N. Washington Blvd.
Sarasota, FL 34236
phone (941) 952-5875
fax (941) 957-3630
schenkelshultz.com
SS Lic No - AA-C000937

Gilbane Building Co.

KEY PLAN:

The key plan shows the layout of the school site with the following buildings and phases:

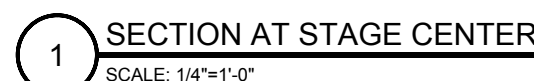
- FIELD TOILET** (top center)
- PHASE 2** (center left, below Field Toilet)
- PHASE 1** (top right, below Field Toilet)
- EXIST. GYM PHASE** (far right)
- VPA** (top left)
- ADMIN. PHASE 2** (center left, below VPA)
- CLASSROOM PHASE 1** (center right)
- NEW G' PHASE** (bottom right)
- CAFETERIA PHASE 1** (bottom center)

A north arrow is located in the bottom left corner, pointing upwards.

STAGE RIGGING AND DRAPERIES SECTION AND SCHEDULES

TH-302

THIS SHEET HAS BEEN MADE TO FIT A 30 X 42 PAPER SIZE - PRINTING TO OTHER SIZES WILL NOT BE TO SCALE



2 LINESET SCHEDULE
SCALE: NONE

3 STAGE DRAPERY SCHEDULE

4 DRAPERY TRACK SCHEDULE
SCALE: NONE



CONSTRUCTION SERVICES DEPARTMENT
7895 FRUITVILLE ROAD
SARASOTA, FLORIDA 34240
phone (941) 361-6680 fax (941) 361-6684

DRAWN BY: SCs
DATE DRAWN: 6.29.2011
CHK'D BY: RC
BUILDING NO:
FLOOR NO:
S.C.S.B. PROJ. NO: 3225
ARCH/ENG. PROJ. NO: 0920127

THIS AREA FOR BUILDING OFFICIAL USE/REVIEW

ARCHITECT / ENGINEER / DESIGN PROF. OF RECORD:

DRAWING PHASE DATE:	
BID DOCUMENTS	
Phase 2 Vertical Construction	
August 15, 2011	
DATE	
REVISION	
1	
2	
3	
4	
5	
6	
7	
8	
9	
10	
11	
12	
13	
14	
15	
16	
17	
18	
19	
20	
21	
22	
23	
24	
25	
26	
27	
28	
29	
30	
31	
32	
33	
34	
35	
36	
37	
38	
39	
40	
41	
42	
43	
44	
45	
46	
47	
48	
49	
50	
51	
52	
53	
54	
55	
56	
57	
58	
59	
60	
61	
62	
63	
64	
65	
66	
67	
68	
69	
70	
71	
72	
73	
74	
75	
76	
77	
78	
79	
80	
81	
82	
83	
84	
85	
86	
87	
88	
89	
90	
91	
92	
93	
94	
95	
96	
97	
98	
99	
100	

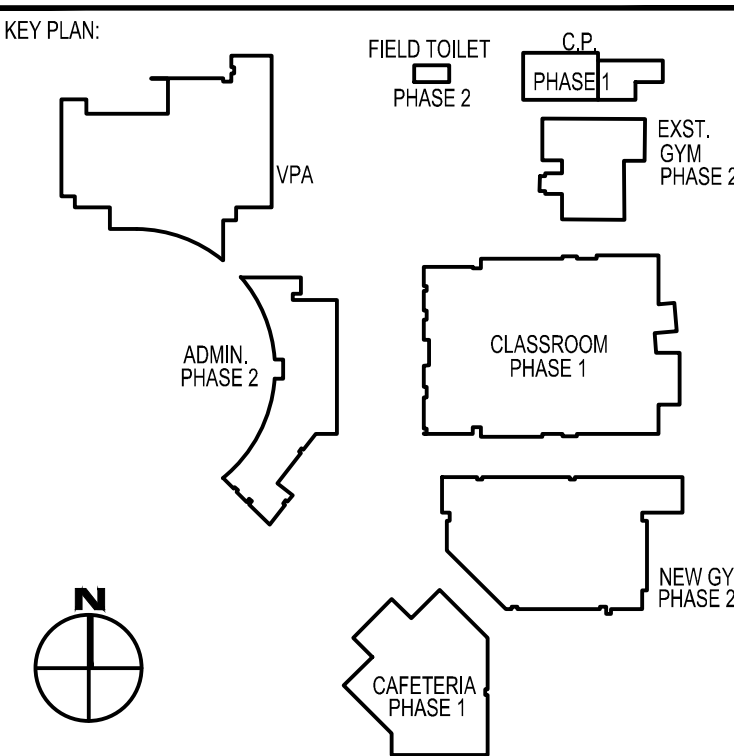
677 N. Washington Blvd.
Sarasota, FL 34236
voice (941) 952-5875
fax (941) 957-3630
schenkelshultz.com
SS Lic No - AA-C000937

CONFIDENTIAL COPYRIGHT 2011 SCHENKEL & SHULTZ, INC.
SEE WWW.SCHENKELSHULTZ.COM FOR PROJECT AND INFORMATION
SARASOTA, FLORIDA 34236
voice (941) 952-5875
fax (941) 957-3630
schenkelshultz.com
SS Lic No - AA-C000937

RECEIVED

Feb 08, 2012

Gilbane Building Co.



PROJECT INFORMATION:
VHS PHASE 2

Phase 2 Vertical Construction
1 Indian Avenue

Venice, Florida 34285

SHEET DESCRIPTION:

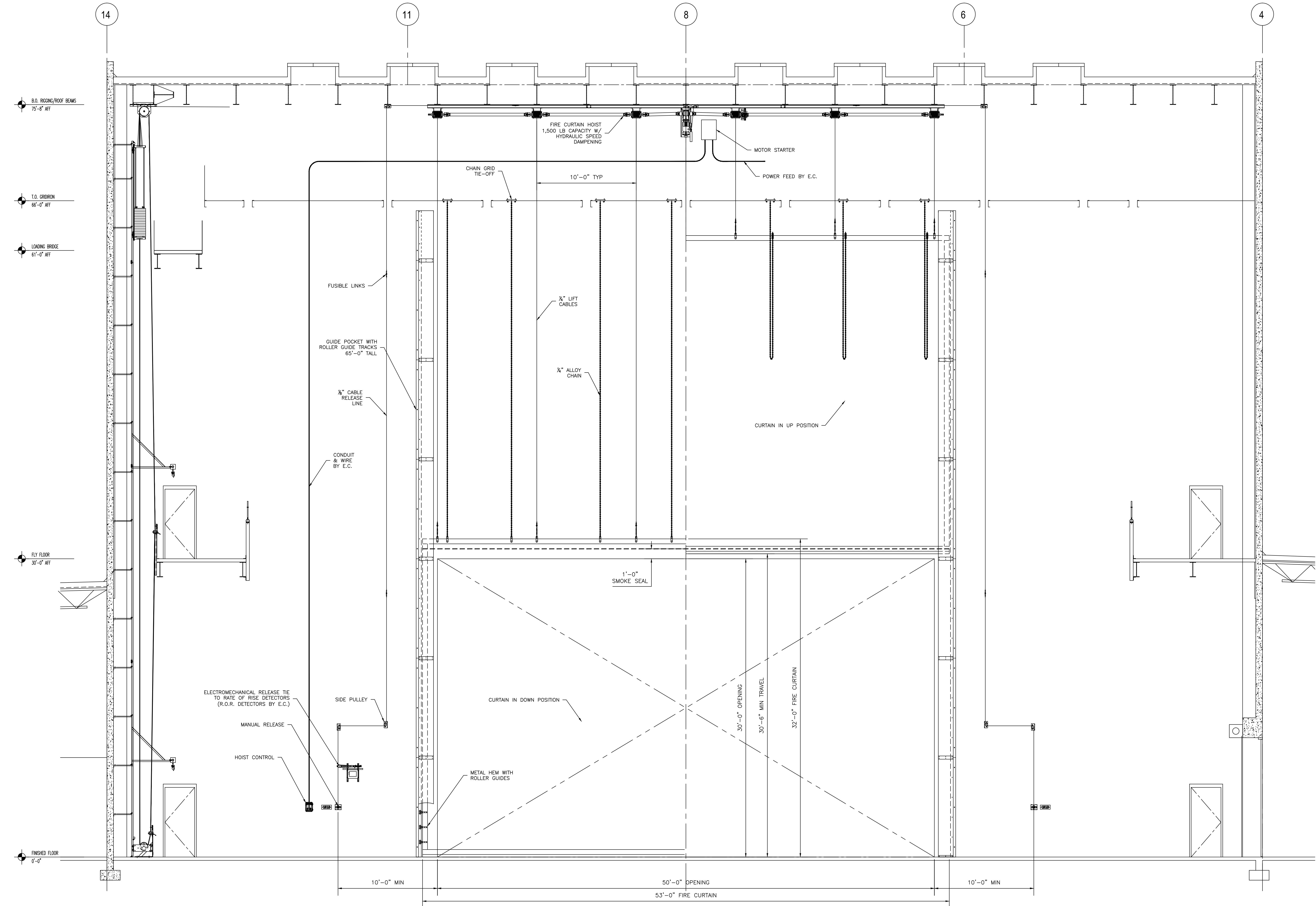
STAGE RIGGING AND
DRAPERIES
FIRE CURTAIN
RIGGING ELEVATION

DATE PLOTTED: 08/15/2011

CAD DWG FILE: VHS PAC 100 CD 8-11 su. mission STG

SHEET: 3 OF 5

TH-303



1 FIRE CURTAIN RIGGING ELEVATION
SCALE: 1/4"=1'-0"



CONSTRUCTION SERVICES DEPARTMENT
7895 FRUITVILLE ROAD
SARASOTA, FLORIDA 34240
phone (941) 361-6680 fax (941) 361-6684

DRAWN BY: SCs
DATE DRAWN: 6.29.2011
CHK'D BY: RC
BUILDING NO:
FLOOR NO:
S.C.S.B. PROJ. NO: 3225
ARCH/ENG. PROJ. NO: 0920127

THIS AREA FOR BUILDING OFFICIAL USE/REVIEW

ARCHITECT / ENGINEER / DESIGN PROF. OF RECORD:

DRAWING PHASE DATE	BID DOCUMENTS	PHASE 2 Vertical Construction	August 15, 2011	DATE	REVISION	DESCRIPTION
1						
2						
3						
4						
5						
6						
7						
8						
9						
10						
11						
12						
13						
14						

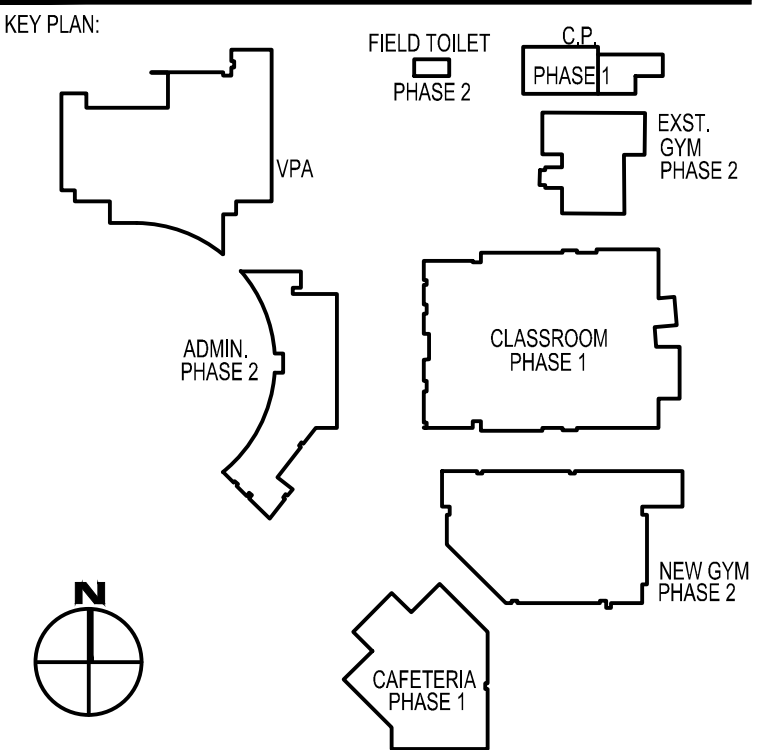
SCHENKELSHULTZ
ARCHITECTURE
677 N. Washington Blvd.
Sarasota, FL 34236
voice (941) 952-5875
fax (941) 957-3630
schenkelshultz.com
SS Lic No - AA-C000937

CONFIDENTIAL COPYRIGHT 2011 SCHENKEL & SULTZ, INC.
SEE WWW.SCHENKELSHULTZ.COM FOR FURTHER INFORMATION
PERMITTED TO BE USED BY THE CLIENT FOR THE PROJECT ONLY. ALL RIGHTS RESERVED. NO PART OF THIS DOCUMENT MAY BE REPRODUCED OR TRANSMITTED IN ANY FORM OR BY ANY MEANS, ELECTRONIC OR MECHANICAL, INCLUDING PHOTOCOPYING, RECORDING, OR BY ANY INFORMATION STORAGE AND RETRIEVAL SYSTEM, WITHOUT PERMISSION IN WRITING FROM SCHENKEL & SULTZ, INC. THIS DOCUMENT IS THE PROPERTY OF SCHENKEL & SULTZ, INC. AND IS TO BE USED ONLY FOR THE PROJECT AND NOT FOR ANY OTHER PURPOSE. ANY REUSE OR MODIFICATION OF THIS DOCUMENT WITHOUT THE WRITTEN PERMISSION OF SCHENKEL & SULTZ, INC. IS STRICTLY PROHIBITED. THE CLIENT AGREES TO HOLD SCHENKEL & SULTZ, INC. HARMLESS FROM AND AGAINST ALL CLAIMS, DAMAGES, LOSSES AND EXPENSES, INCLUDING REASONABLE ATTORNEY'S FEES, ARISING OUT OF OR RESULTING FROM THE USE OF THIS DOCUMENT FOR ANY PURPOSE OTHER THAN THAT AUTHORIZED BY SCHENKEL & SULTZ, INC.

RECEIVED

Feb 08, 2012

Gilbane Building Co.



PROJECT INFORMATION:
VHS PHASE 2

Phase 2 Vertical Construction
1 Indian Avenue

Venice, Florida 34285

SHEET DESCRIPTION:

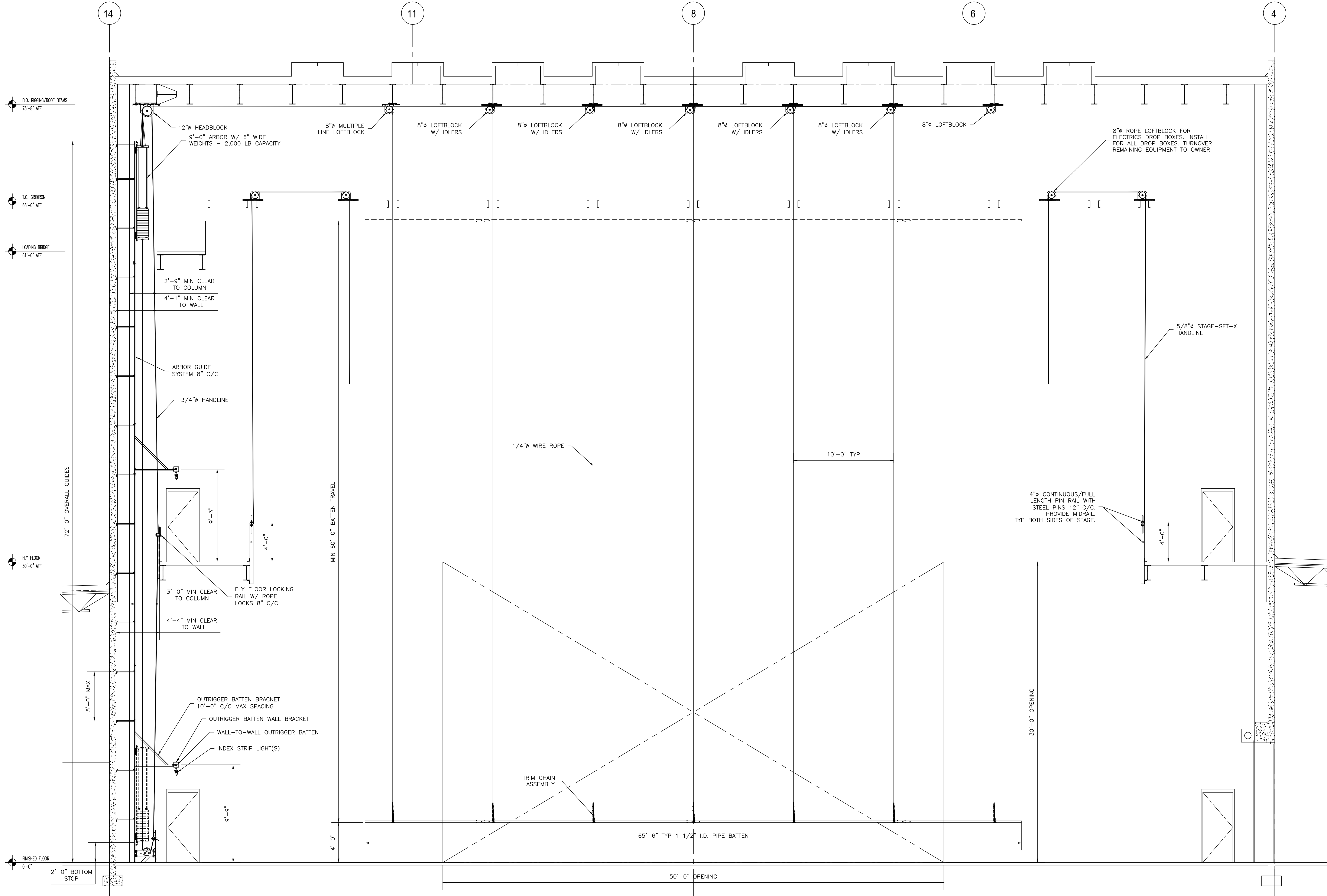
**STAGE RIGGING AND
DRAPERIES
7 LINE RIGGING
ELEVATION**

DATE PLOTTED: 08/15/2011

CAD DWG FILE: VHS PAC 100 CD 8-11 su mission STG

SHEET: 4 OF 5

TH-304



7 LINE COUNTERWEIGHT RIGGING ELEVATION
SCALE: 1/4\"/>

DRAWN BY: SCS
DATE DRAWN: 6.29.2011
CHK'D BY: RC
BUILDING NO:
FLOOR NO:
S.C.S.B. PROJ. NO: 3225
ARCH/ENG. PROJ. NO: 0920127

ARCHITECT / ENGINEER / DESIGN PROF. OF RECORD:

[illegible][illegible]

Gilbane Building Co.

PLAN

FIELD TOILET
PHASE 2

C.P.
PHASE 1

EXIST. GYM
PHASE 2

VPA

ADMIN. PHASE 2

CLASSROOM PHASE 1

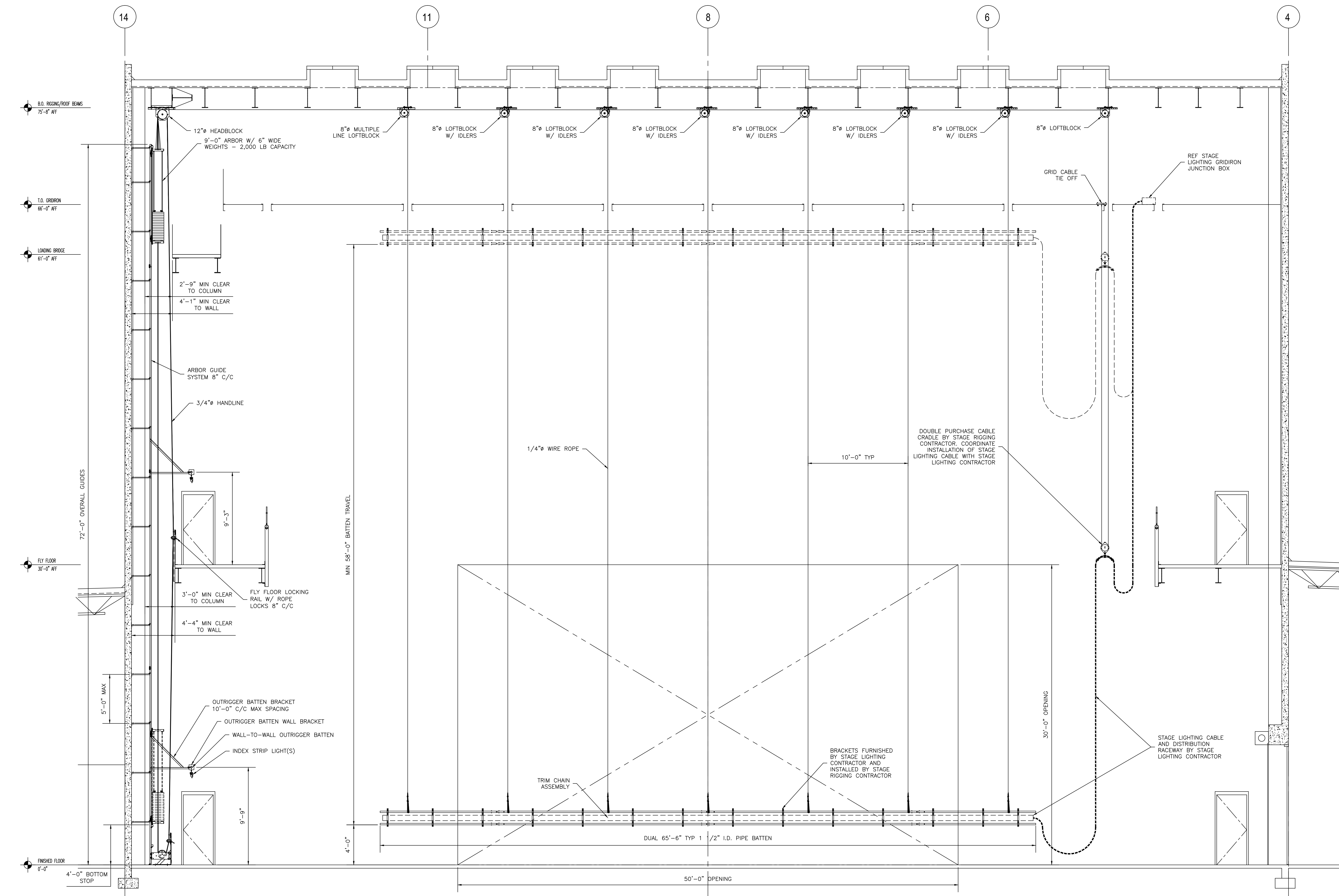
NEW GYM
PHASE 2

CAFETERIA
PHASE 1

N

STAGE RIGGING AND
DRAPERIES
8 LINE RIGGING
ELEVATION

TH-305



1 8 LINE COUNTERWEIGHT RIGGING ELEVATION
SCALE: 1/4"=1'-0"

DRAWN BY: SCS
DATE DRAWN: 6.29.2011
CHK'D BY: RC
BUILDING NO:
FLOOR NO:
S.C.S.B. PROJ. NO: 3225
ARCH/ENG. PROJ. NO: 0920127

THIS AREA FOR BUILDING OFFICIAL USE/APPROVAL

ARCHITECT / ENGINEER / DESIGN PROF. OF RECORD:

[illegible][illegible]

Gilbane Building Co.

PLAN:

VPA

ADMIN. PHASE 2

CLASSROOM PHASE 1

CAFETERIA PHASE 1

FIELD TOILET

C.D. PHASE 1

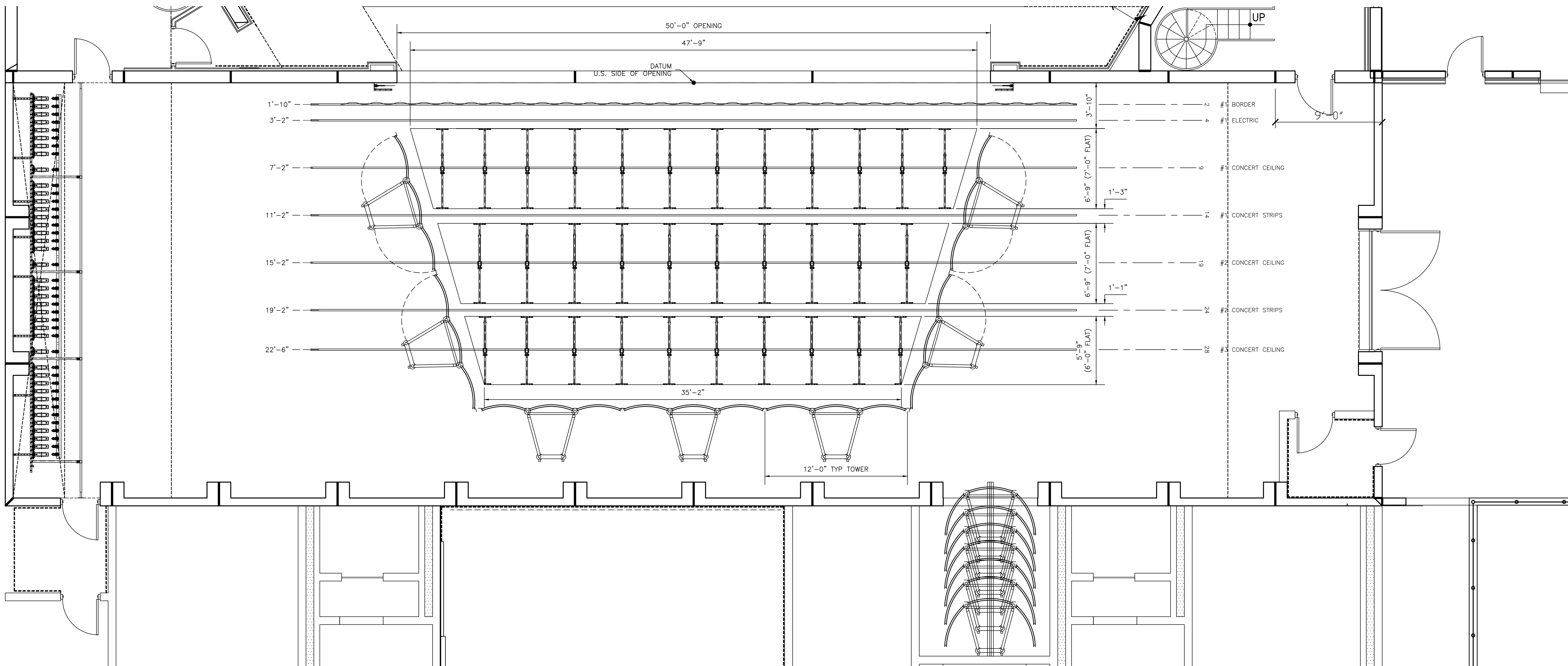
EXIST. GYM PHASE 2

NEW GYM PHASE 2

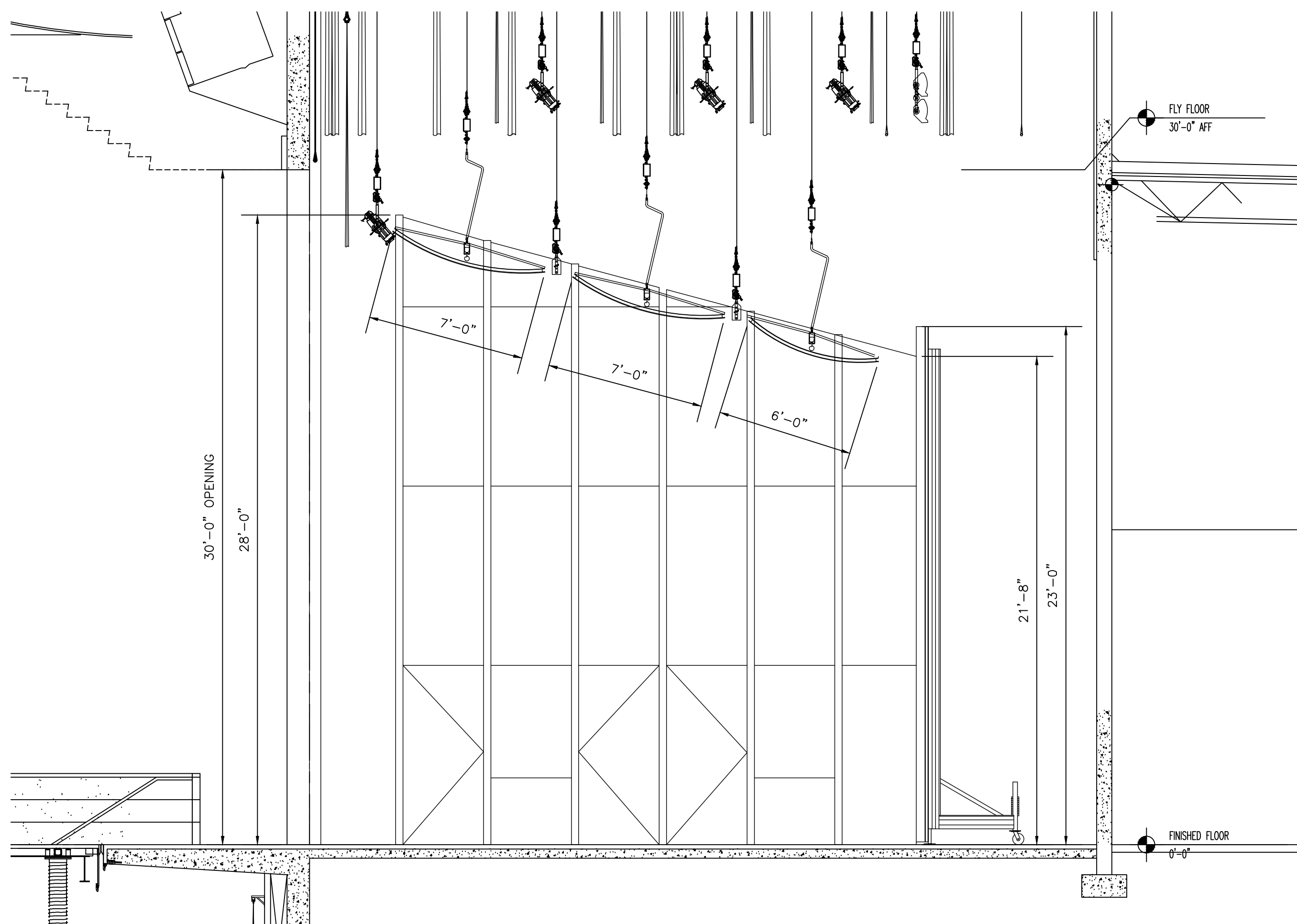
N

ORCHESTRA SHELL SYSTEM

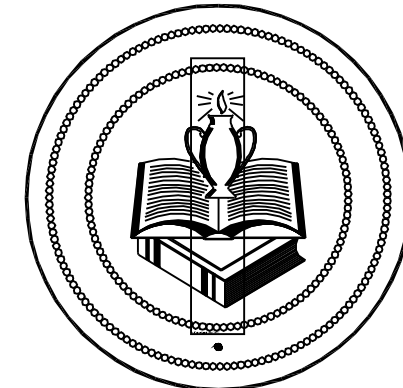
TH-501



1 CONCERT SHELL SYSTEM PLAN
SCALE: 1/4"=1'-0"



2 SECTION AT STAGE CENTER
SCALE: 1/8"=1'-0"



CONSTRUCTION SERVICES DEPARTMENT
7895 FRUITVILLE ROAD
SARASOTA, FLORIDA 34240
phone (941) 361-6680 fax (941) 361-6684

DRAWN BY: -
DATE DRAWN: -
CHK'D BY: -
BUILDING NO: -
FLOOR NO: -
S.C.S.B. PROJ. NO: 3225
ARCH/ENG. PROJ. NO: 0920127

THIS AREA FOR BUILDING OFFICIAL USE/APPROVAL

ARCHITECT / ENGINEER / DESIGN PROF. OF RECORD:

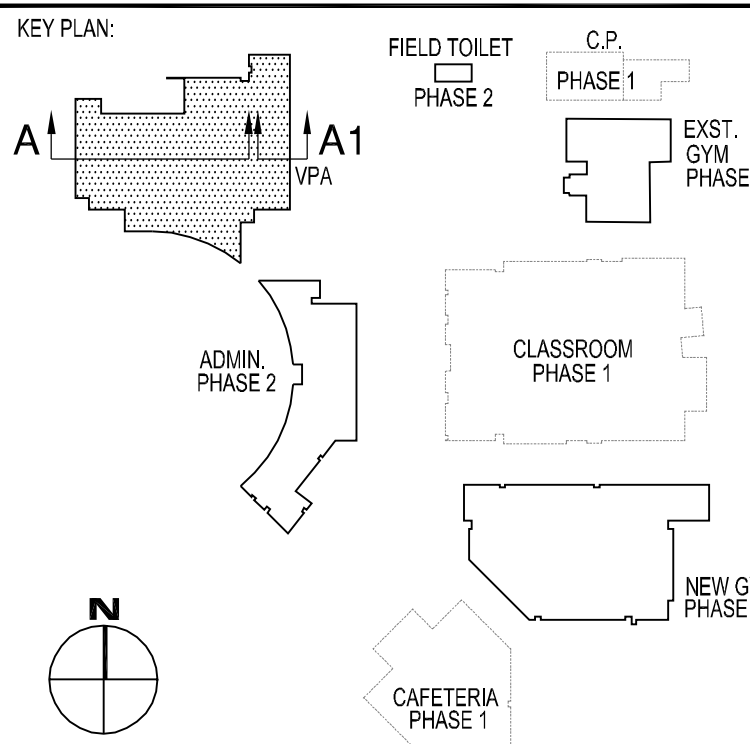
REVISION	DATE	DESCRIPTION
1	August 15, 2011	Phase 2 Vertical Construction

SCHENKELSHULTZ
ARCHITECTURE
677 N. Washington Blvd.
Sarasota, FL 34236
voice (941) 952-5875
fax (941) 957-3630
schenkelshultz.com
SS Lic No - AA-C000937

RECEIVED

Feb 08, 2012

Gilbane Building Co.



PROJECT INFORMATION:

VHS PHASE 2

Phase 2 Vertical Construction
1 Indian Avenue
Venice, Florida 34285

SHEET DESCRIPTION:

BUILDING
SECTIONS - VPA

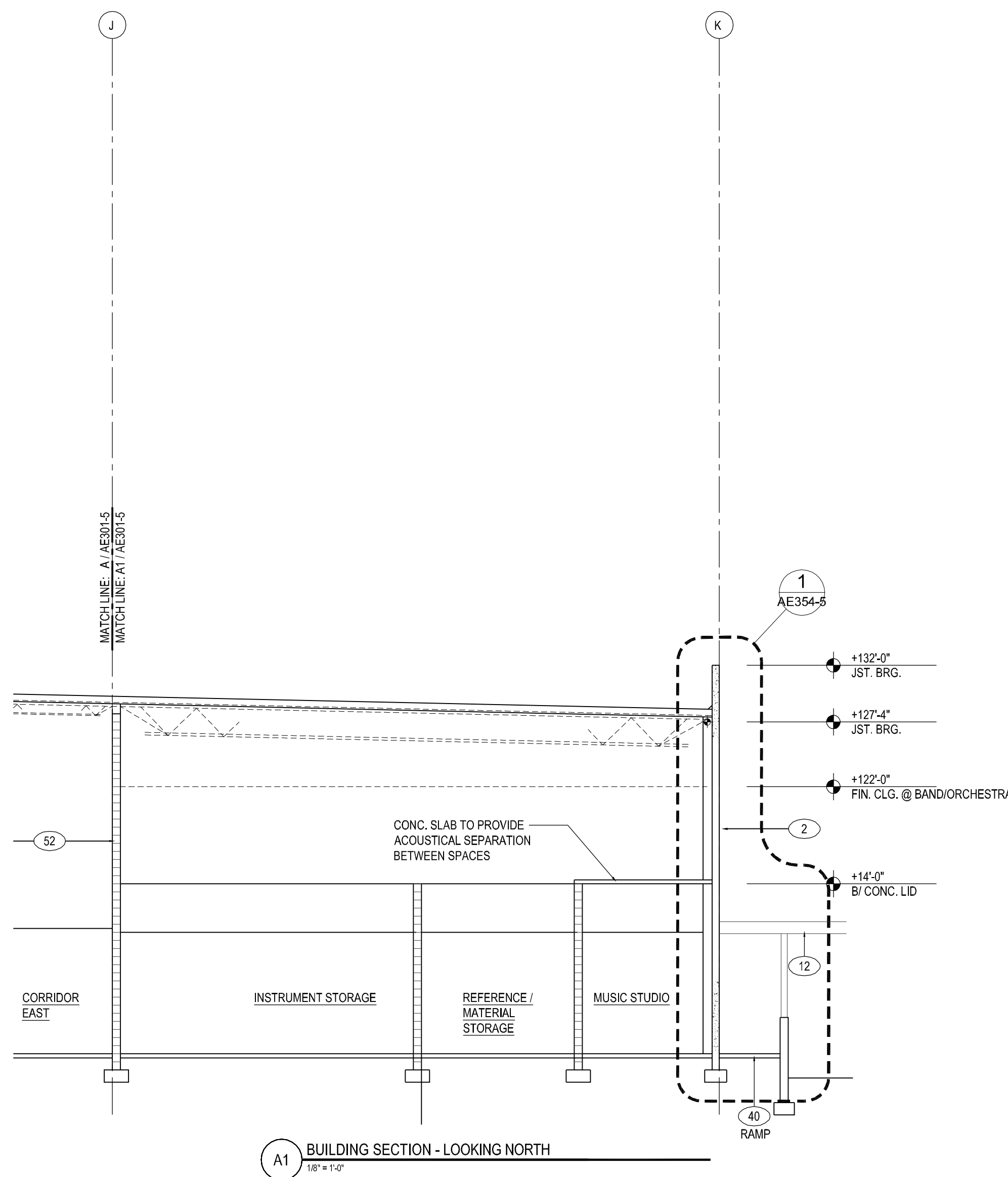
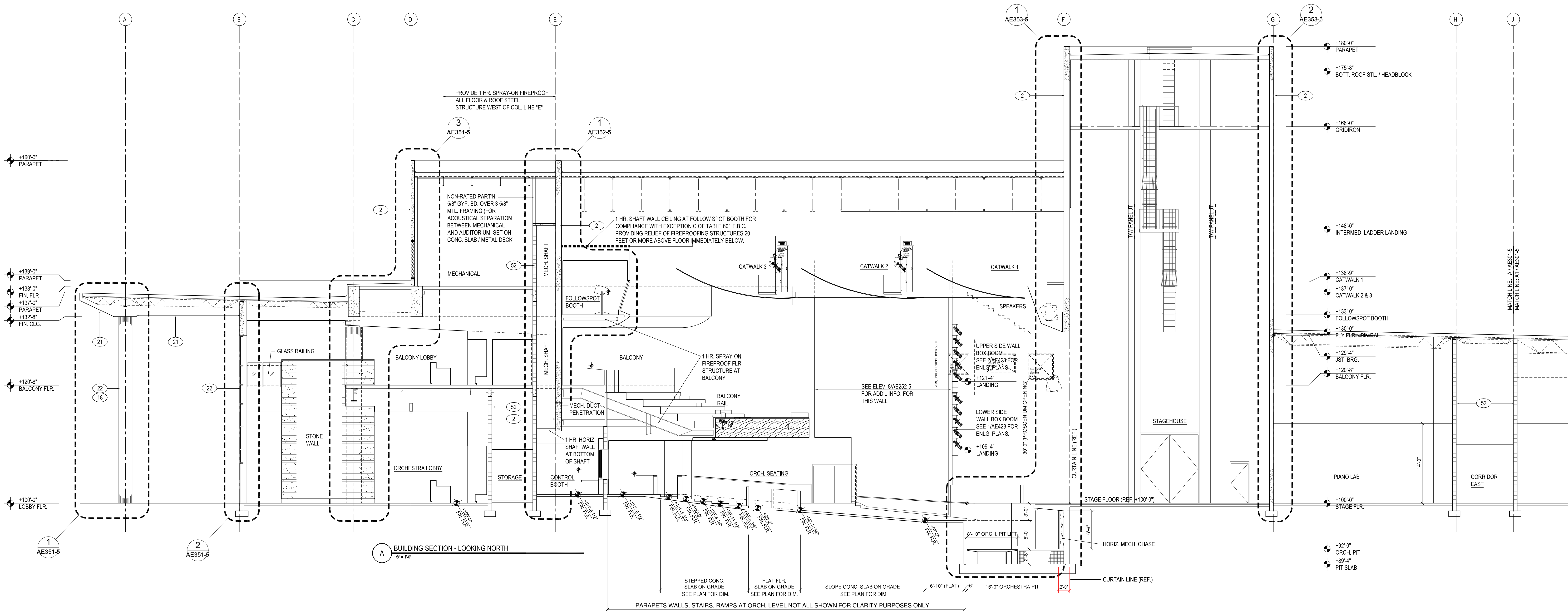
DATE PLOTTED: 12/08/2011

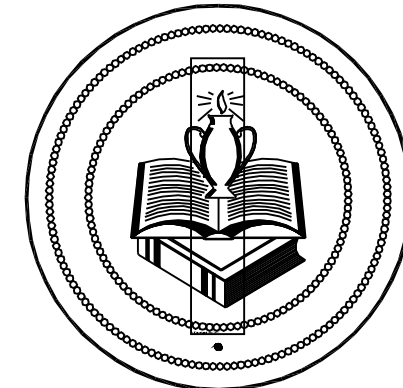
CAD DWG FILE: AE301-5 BUILDING

SHEET: SECTION - VPA.DWG

AE301-5

THIS SHEET IS A REFERENCE TO THE PROJECT AND NOT A SUBSTITUTE FOR THE ORIGINAL DRAWING.





CONSTRUCTION SERVICES DEPARTMENT
7895 FRUITVILLE ROAD
SARASOTA, FLORIDA 34240
phone (941) 361-6680 fax (941) 361-6684

DRAWN BY: -
DATE DRAWN: -
CHK'D BY: -
BUILDING NO: -
FLOOR NO: -
S.C.S.B. PROJ. NO: 3225
ARCH/ENG. PROJ. NO: 0920127

THIS AREA FOR BUILDING OFFICIAL USE/REVIEW

ARCHITECT / ENGINEER / DESIGN PROF. OF RECORD:

REVISION	DATE	DESCRIPTION
1	August 15, 2011	Phase 2 Vertical Construction

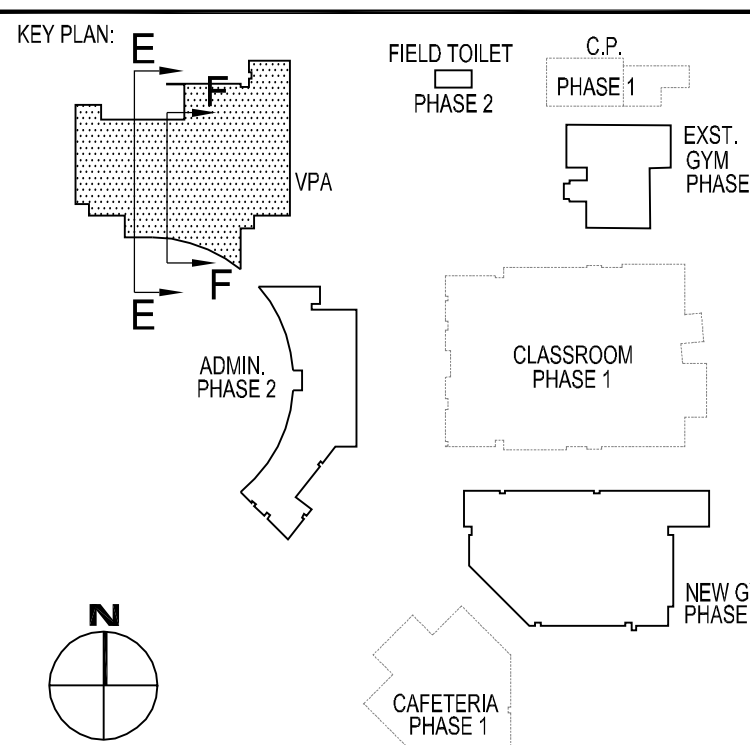
SCHENKELSHULTZ
ARCHITECTURE
Sarasota, FL 34236
voice (941) 952-5875
fax (941) 957-3630
schenkelshultz.com
SS Lic No - AA-C000937

CONFIDENTIAL COPYRIGHT 2011 SCHENKELSHULTZ
THIS DRAWING IS THE PROPERTY OF SCHENKELSHULTZ ARCHITECTURE. IT IS TO BE USED ONLY FOR THE PROJECT AND SITE SPECIFICALLY IDENTIFIED. NO PART OF THIS DRAWING IS TO BE REPRODUCED OR TRANSMITTED IN ANY FORM OR BY ANY MEANS, ELECTRONIC OR MECHANICAL, INCLUDING PHOTOCOPYING, RECORDING, OR BY ANY INFORMATION STORAGE AND RETRIEVAL SYSTEM, WITHOUT THE WRITTEN PERMISSION OF SCHENKELSHULTZ ARCHITECTURE. ANY VIOLATION OF THIS AGREEMENT WILL BE PROSECUTED TO THE FULL EXTENT OF THE LAW. THE USER OF THIS DRAWING AGREES TO HOLD SCHENKELSHULTZ ARCHITECTURE HARMLESS FROM ANY AND ALL CLAIMS, DAMAGES, LOSSES, AND EXPENSES, INCLUDING ATTORNEY'S FEES, ARISING OUT OF OR RESULTING FROM THE USE OF THIS DRAWING. THE USER OF THIS DRAWING AGREES TO INDEMNIFY AND HOLD SCHENKELSHULTZ ARCHITECTURE HARMLESS FROM ANY AND ALL CLAIMS, DAMAGES, LOSSES, AND EXPENSES, INCLUDING ATTORNEY'S FEES, ARISING OUT OF OR RESULTING FROM THE USE OF THIS DRAWING. THE USER OF THIS DRAWING AGREES TO INDEMNIFY AND HOLD SCHENKELSHULTZ ARCHITECTURE HARMLESS FROM ANY AND ALL CLAIMS, DAMAGES, LOSSES, AND EXPENSES, INCLUDING ATTORNEY'S FEES, ARISING OUT OF OR RESULTING FROM THE USE OF THIS DRAWING.

RECEIVED

Feb 08, 2012

Gilbane Building Co.



PROJECT INFORMATION:

VHS PHASE 2

Phase 2 Vertical Construction
1 Indian Avenue
Venice, Florida 34285

SHEET DESCRIPTION:

BUILDING
SECTIONS - VPA

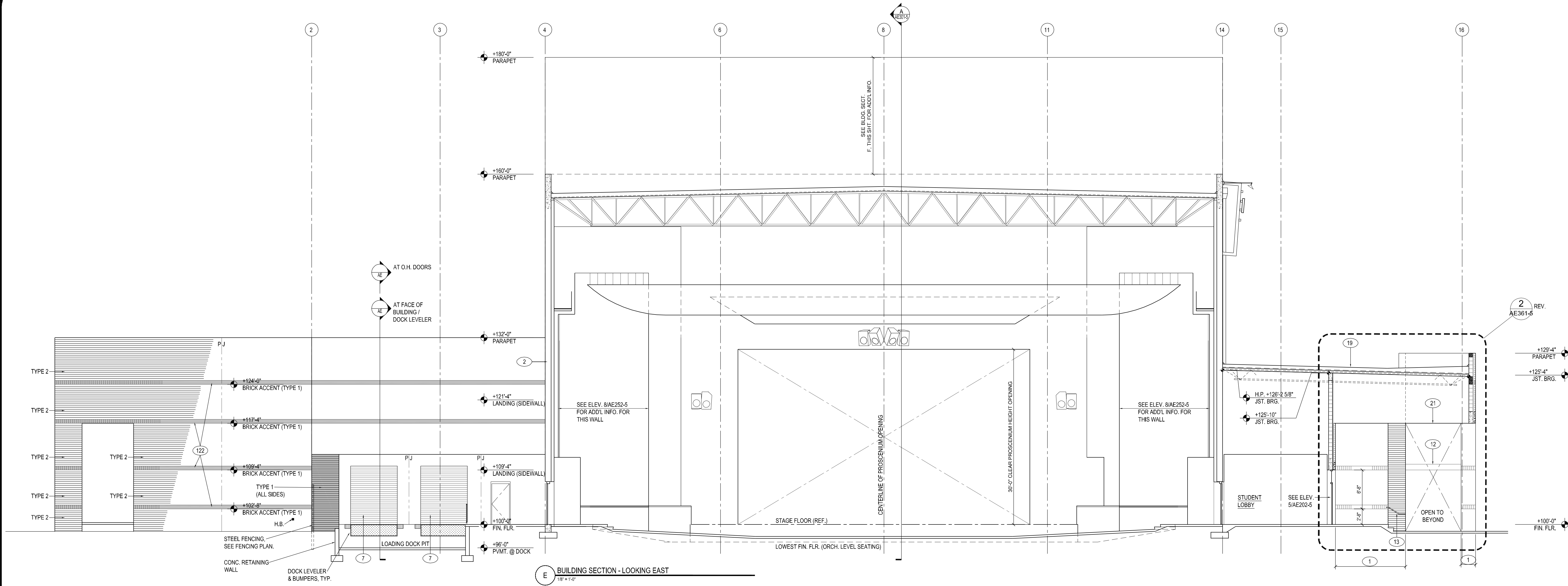
DATE PLOTTED: 12/08/2011

CAD DWG FILE: AE303-5 BUILDING

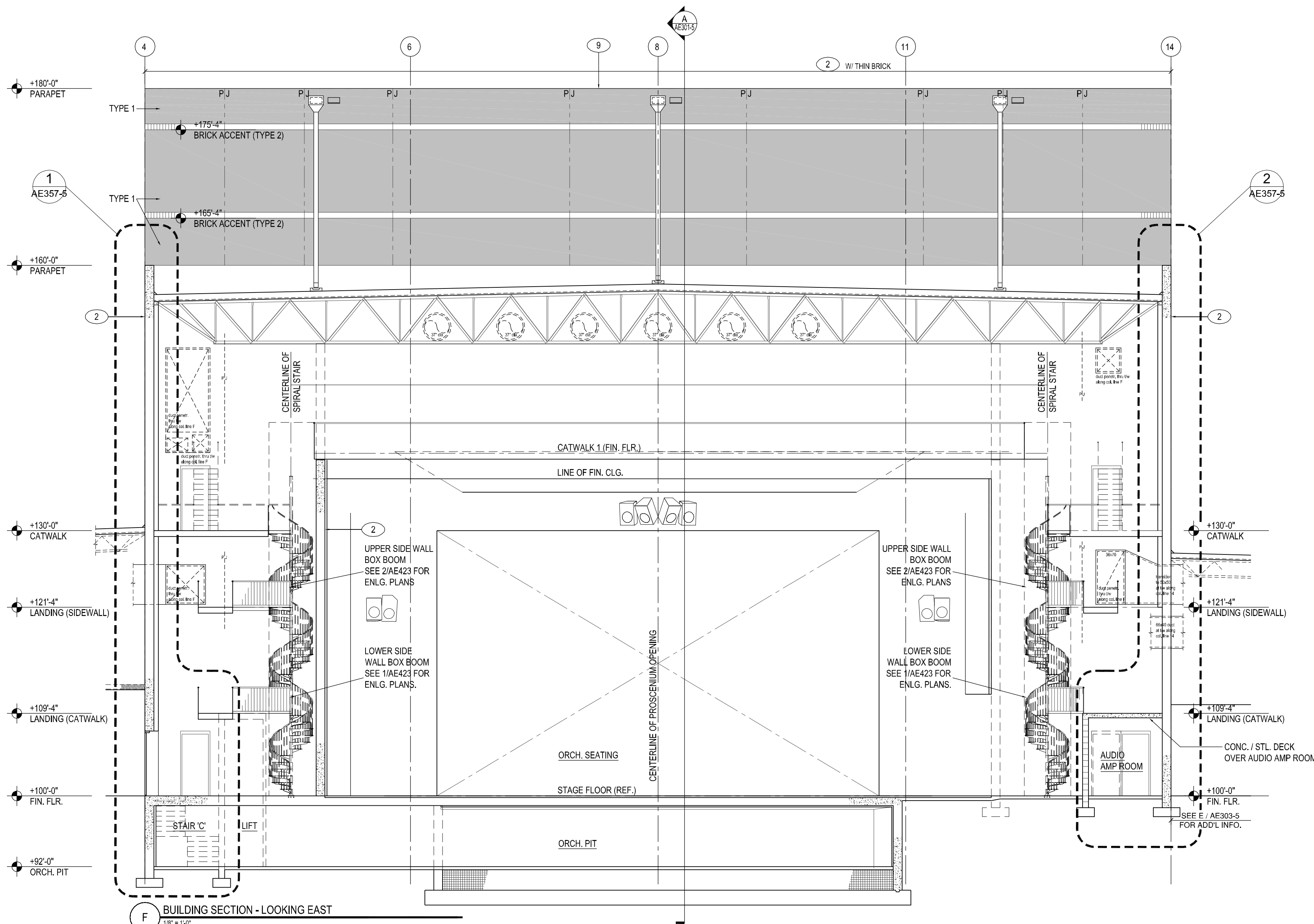
SHEET: SECTION - VPA.DWG

AE303-5

THIS SHEET IS A PRELIMINARY DESIGN. IT IS NOT TO BE USED FOR CONSTRUCTION. IT IS THE USER'S RESPONSIBILITY TO OBTAIN ALL NECESSARY PERMITS AND APPROVALS. THE USER OF THIS DRAWING AGREES TO HOLD SCHENKELSHULTZ ARCHITECTURE HARMLESS FROM ANY AND ALL CLAIMS, DAMAGES, LOSSES, AND EXPENSES, INCLUDING ATTORNEY'S FEES, ARISING OUT OF OR RESULTING FROM THE USE OF THIS DRAWING.



E BUILDING SECTION - LOOKING EAST



F BUILDING SECTION - LOOKING EAST