



# QUICK START GUIDE

## Ethereum Classic

*easy set-up*



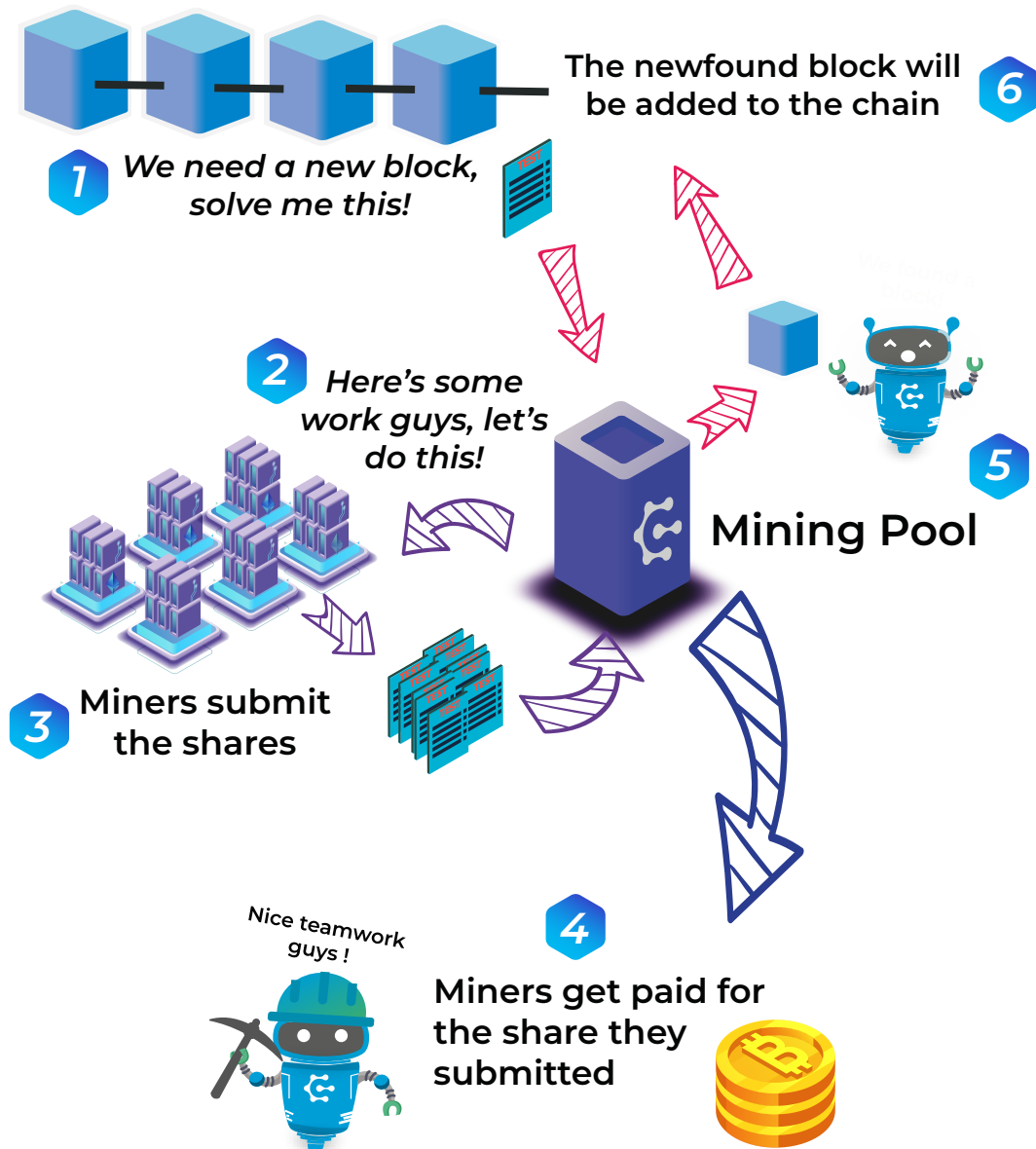
For windows users



# How does Cruxpool work?

Our mission is to provide you with the most efficient tools to mine on the Ethereum blockchain. This quick start guide will show you where you should begin your mining experience with Cruxpool.

Let's have first a look at how our ethereum pool works



In order to be part of this ecosystem, we will guide you through the different steps required to start mining with Cruxpool. It requires a bit a technical knowledge but don't worry we're here to help you with this

# Step 1: Why and how to mine?

## Why mining?

When you mine a block, you become part of the blockchain process of verification of transaction, and you have a role in the creation of the new blocks. When a block is found there will be a retribution for your efforts.

This reward consists in fraction of cryptocurrencies, that depends on many factors but once the job is done those cryptos will go to your wallet, and you can exchange them right away, let them take some value for future trading purposes, buy the cool stuff you want etc. You can then create a form semi-passive income!

Learn more about crypto mining on our blog at [www.blog.cruxpool.com](http://www.blog.cruxpool.com)

## What do I need to start Mining?

### 1 A Mining Rig



A mining rig consists in a rack of GPUs connected together to the mining software of your choice. The computing power generated by the rig will allow you to mine on the Blockchain. You can build one, or buy one!

Another option if you d'ont have a mining rig, you can rent hashrate on NiceHash, as we are compatible with their marketplace!

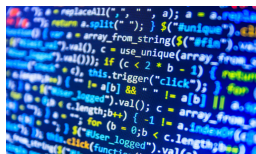
### 2 A wallet



Your wallet will allow you to receive and stack the coins you've mined! Also, you'll be able to send and receive coins from/to other persons.

Jaxx Liberty for instance, is provided through a Google Chrome Extension

### 3 A mining software



in order to tell your mining rig what they have to do, and where they should connect. We will show you what manipulations you need to do to setup everything.

### 4 Cruxpool



You will eventually need a mining pool that will be sending to your rig the jobs required by the blockchain. The pool will then send the rewards from mining. Lucky for you, you found us!

# Step 2: Setup hardware and software

Once you have everything you need in terms of Hardware, it's time to get connected to Cruxpool. For this, you will have first to check your environment: Windows or Linux? AMD or Nvidia?

## With Windows



Windows cannot recognize more than 4 graphic cards connected to a computer. In case you have more than 4 graphic cards in your computer, you need to have them recognized. For this purpose, go to the BIOS of your computer and look for the setting that will increase the number of graphics cards detected by your system

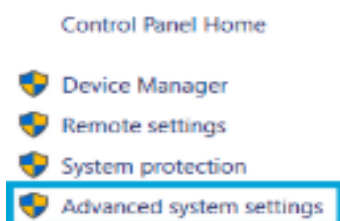
### Install drivers for your graphic cards



AMD

Do not use graphic cards from different manufacturers on the same rig!

### Increase virtual memory of the card



Click on **Advanced System Settings**, then on **Performance Settings**. A new window will open and click on **Advanced**. Click on **Change**, uncheck the **Automatically manage paging file size for all drives** and then tick **Custom size**. You will have two unlocked fields. On the initial size field, **put 16,000** and **on the maximum size field, put 30,000**.

### Disable Windows Sleeping Mode Set both modes on «NEVER»

### Disable Windows Update

To disable updates, **type Services in the search bar or Cortana of your Windows**. Once you get to this page, look for Windows Update in the list of services. When you have it, right-click and select **Properties**, and then set on **«disabled» on the Startup type**.

### Choose and install mining software

The mining software will allow you to configure your RIG. You can choose between several software programs such as **Claymore for example**.


Once its downloaded, unzip the file and start.bat then right click and Edit, a text file should open. Enter the server address and your wallet address.

```
setx GPU_MAX_HEAP_SIZE=100
setx GPU_USE_SYNC_OBJECTS=1
setx GPU_MAX_ALLOC_PERCENT=100
setx GPU_SINGLE_ALLOC_PERCENT=100
EthDcrMiner64.exe -epool eu.cruxpool.com:7777 -ewal WALLET -eworker RIG_NAME -epsw x -mode 1 -eth 100 -gser 2
```

If you prefer, we have created a command line generator that will automatically fill up the line to enter. It's available on our website!

# Step 3: Access to your dashboard

## Access to your dashboard

Go to [cruxpool.com](https://cruxpool.com) and put your wallet address in the search bar then click on the  icon.

My wallet : Enter address



## Dashboard

Your dashboard is the place where you can monitor and control everything. On the main page, you'll be able to see your global hashrate, the number of active and inactive workers (=rigs). You can also check your real time balance and the last time you got rewarded. As you can see on the image below, we also added a chart that allows you to follow your hashrate over the last 24h.

## Statistics

When you click on the [Statistics](#) button, you'll get access to a more detailed view of the main dashboard. This will allow you to control and monitor stat in one glance.

The [Hashrate](#) box displays data on the computing power generated by your rig

The [shares](#) box, shows the number of share that you submitted to the pool.

The [workers](#) box is about rigs that are active or inactive. This will help you control is there is a disconnected rig that needs fixes or reboot for instance.


Eventually, the [balance](#) box is a summary of all payments and income you have with our mining pool

## Earnings

By clicking on Earnings, you will be able to check all data concerning profitability and revenue you get from your rigs.

Here you can see you current Balance, Expected earnings, Total paid amount since you started using Cruxpool, but also the individual list of all payments done

## Set Payout Threshold

 Payout threshold

Still in the earnings section, click on the «Payout Threshold» button in order to set it according to you preferences. Note that the minimum threshold is at 0.01ETH

# Step 4: Frequently asked questions

**Q** What is the pool fee?

**A** 1% mining fee on Cruxpool.

**Q** What is the reward distribution mode?

**A** We use PPS+ system. It offers all the advantages of both PPS and PPLNS.

**Q** When do I receive my payment?

**A** Threshold payment is customizable between 1 ETC and 10 ETC. Payment is done as soon as threshold is reached.

**Q** What is «perf. rate» in my dashboard?

**A** This is a performance rate of your server calculated on the basis of your reported and real time hashrate.

---

## **◆** Tips on selecting your RAM

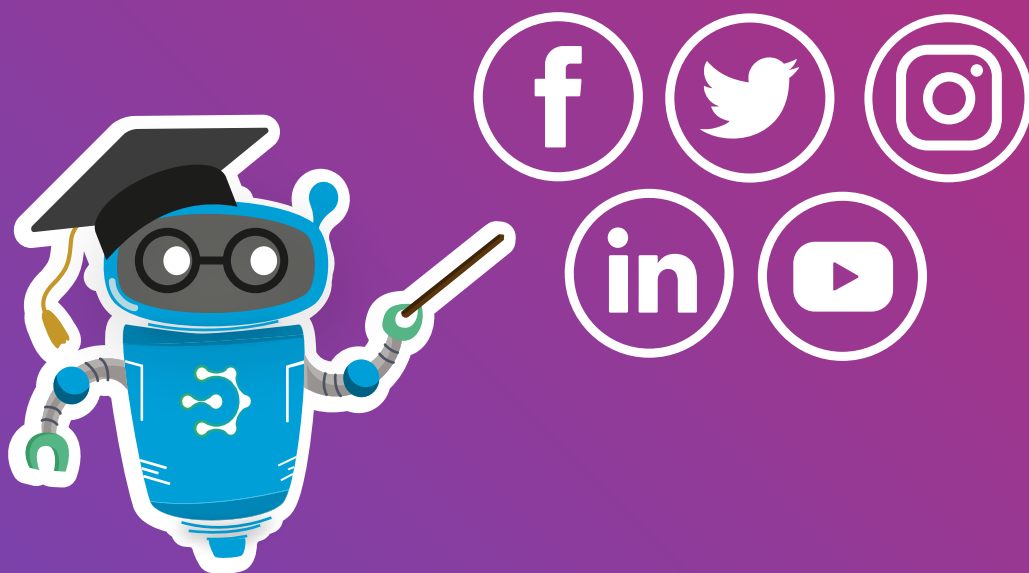
There are different RAM brands of graphic cards on the market: Samsung, Micron and Hynix.

There is basically no issue with Samsung and Micron, but it's another story with Hynix RAM. Indeed the Hynix RAM could make you lose up to 30% of hashrate compared to Samsung and Micron RAM.

Unfortunately there is no simple solution to this problem. Unless you are able to buy high volume of graphic card, no supplier will guaranteed the brand of the RAM in a graphic card. So it's unfortunately a question of luck. Note that's the Hynix cards represent 5% to 10% of the market.

If you want to learn more, read our tutorials on  
<https://www.cruxpool.com>

**FOLLOW US!**  
**FIND US ON SOCIAL NETWORKS**  
**LIKE, COMMENT AND SHARE!**



**Cruxpool 2019**