

Raven XT

Quick Start Guide for AT&T



20070914
Rev 3.0E



Activating your Raven XT on AT&T

- Installing the SIM
- Configuring the APN
- Hardware Installation
- Indicator Lights
- Optional: Setting up a DUN Connection



This Quick Start guide provides step-by-step directions for activating your Raven XT on AT&T's network.

Tip: For additional configuration options, refer to the *User Guide for your Raven XT*.

Installing the SIM

The Subscriber Identity Module (SIM) in the Raven XT is a smartcard that securely stores the key identifying a cellular subscriber. Generally, you will only need to install a SIM once in the life of the modem and it may be pre-installed by your Sierra Wireless Representative.

If the SIM was pre-installed, unless you need to set a custom APN, activation of your modem is complete. Skip to the Raven XT Placement section and/or to the DUN instructions, if you need Dial-Up Networking.

Cellular Account Required

- **Cellular Account Required-** To use your modem, you need to have a SIM with an active account with an EDGE GPRS cellular provider (such as AT&T).

Software Required

- **ACEmanager** - Graphical interface for entering most AT Commands. You can download ACEmanager from the Sierra Wireless AirLink Solutions website: <http://www.sierrawireless.com/support/>. A default installation of this utility is assumed later in these directions

Hardware Required

- **Serial cable** - A straight through serial cable.

Note: Until you install a driver for the USB port, you cannot use your USB port to configure the modem.

- **Power adapter and a power source** - You will need a power supply and power source for the modem.
- **PC or laptop** - To configure the modem, you will need a computer with an available serial port.

Tools Required

- **Small Phillips screw driver** - The Phillips screw driver is the one which is also called a plus (+) or X screw driver.

Procedure

- a. Carefully remove the SIM card from the card you received from AT&T.

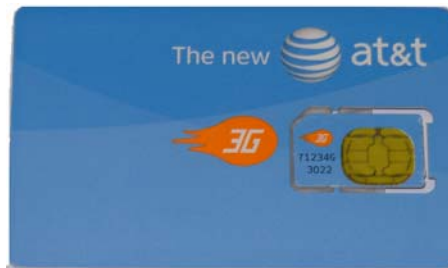


Figure 0-1: Sample of the SIM card

- b. Gently press the SIM card to secure in place.



Figure 0-2: Insert SIM in to the modem

- c. Replace the case back.

Tip: *The top of the card faces the bottom of the modem.*

When the faceplate is replaced and secured, the installation of the SIM is complete.

Configuring the APN

The APN (Access Point Name) is the way your device knows how it will be communicating with the network. The APN allows custom IP addressing and tailoring your company's wireless IP solution to meet the security and IP addressing requirements of your applications.

Note: Most accounts use the default addressing solution of Private or Public IP addresses supplied by the Internet and Proxy APNs. Only if you have a Static or Custom IP address should you need to configure a custom APNs.

The default APN is *Internet*. If you need a different APN, use ACEmanager to configure it.

Hardware Installation

Note: During installation, please be sure that the cables are secure but do not bear any additional weight that could loosen the connector from the unit.

Your Raven XT should be mounted in a position that allows easy access for the cables so they are not bent, constricted, in close proximity to high amperage, or exposed to extreme temperatures. The LEDs on the front panel should be visible for ease of operational verification. You should ensure that there is adequate airflow around the modem but that it is kept free from direct exposure to the elements, such as sun, rain, dust, etc.

Caution: *The Raven XT is in a hardened case and designed for use in industrial and extreme environments. However, unless you are using cables expressly designed for such environments, they can fail if exposed to the same conditions the Raven XT can withstand.*



Figure 0-3: Raven XT Connectors

Cellular

Note: This device is not intended for use within close proximity of the human body. Antenna installation should provide for at least a 20 CM separation from the operator.

Antennas selected should not exceed a maximum gain of 5 dBi under standard installation configuration. In more complex installations (such as those requiring long lengths of cable and/or multiple connections), it's imperative that the installer follow maximum dBi gain guidelines in accordance with the radio communications regulations of the Federal Communications Commission (FCC), Industry Canada, or your country's regulatory body (if used outside the US).

Your Raven XT will work with most cellular antennas with a SMA connector. Connect the primary antenna or primary RF cable directly to the antenna connector on the back of the Raven XT.

Tip: When using a cable to an antenna placed away from the modem, minimize the length of your cable. All gain from a more advantageous antenna placement can be lost with a long cable to the modem.

This I/O port handles external input and output events. An external device can send digital input to the modem, through the digital I/O port.

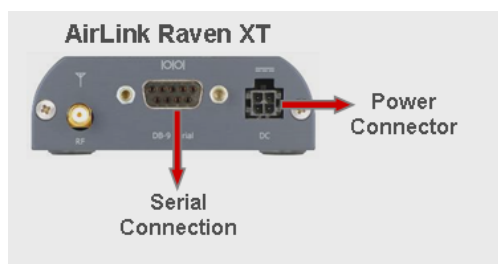


Figure 0-4: Digital I/O Port: Power Connector



Warning: *Risk of electric shock: Only use the supply voltages listed in this user guide.*



Warning: *When using AC to DC adapter the ambient temperature should not exceed 40°C.*

Your Raven XT can be used with either DC or AC, with the appropriate power adapter. DC cables and AC adapters are available as optional accessories in addition to the one included with your Raven XT.

Note: When using a DC power source (such as a solar cell), Sierra Wireless recommends placing a fuse (1-2 Amp) on the line close to the power source to protect your power source from possible surges due to shorts or other line issues.

The DC power cable positive lead should be connected to the battery or power source positive terminal. The power cable negative lead should be connected to the battery or power source negative terminal.

Tip: *The DC power cable has a white wire lead in addition to the power positive and negative. This is for a feature not present in the Raven line modems. In the Raven XT, the white wire lead has no function and can be ignored.*

Warning: *Explosion Hazard - Do not disconnect equipment unless power has been switched off or the area is known to be non-hazardous.*

Connecting to a Computer or other Device



Figure 0-5: USB

Your Raven XT's full-speed (12 Mbit) USB 2.0 port can be connected directly to most computers or other devices using a standard full-speed USB 2.0 cable. If the computer or device you are connecting or the cable is not rated for full-speed, the modem will communicate at a reduced speed to match. The Raven XT functions as a device, not a host.

When it is connected to a computer, the USB port should be seen as a COM port or Ethernet port after the applicable driver is installed.

The Raven XT has a standard mini-B connector.

Warning: *The USB port can only be used in a non-hazardous environment.*

Indicator Lights

When solid, Raven XT indicates a successful connection. When your Raven XT is connected to power and an antenna, there is a specific pattern to the lights to indicate its operation mode.



Figure 0-6: Raven XT Indicator lights

- **Network** - Indicates a successful connection to the cellular network with an IP address given and a channel acquired.
- **Signal** - Light shows the strength of the signal and may be nearly solid (strong signal) or flashing (weaker signal). A slow flash indicates a very weak signal.

RSSI LED Ranges

RSSI/Signal LED Status	Ranges of RSSI (dBm)
On Solid	Equal to or stronger than -69
Fast Blink	-70 to -79
Normal blink	-80 to -89
Slow Blink	-90 to -99
Extinguished	Equal to or weaker than -100

- **Activity** - Lights will flash as data is transferred to and from the PinPoint modem on the remote network.
- **Srv (service)** - Indicates when the connection is EDGE. Unlit indicates GPRS.
- **Power** - Indicates the power adapter is connected and there is power getting to the Raven XT.
- The **Reset button** (on the left side of the Raven XT) has two functions. If it is quickly depressed and released, the modem will simply power cycle the internal hardware. If, however, the reset is depressed and held for several seconds (count 10 slowly, and wait for the power light to go off after the light pattern stops), the ALEOS configuration settings will return to the factory defaults.

Caution: *If you reset the modem configuration using the reset button, you may to reconfigure your APN.*

Light Patterns

The LEDs on the front of the modem will respond in different patterns to indicate modem states.

- **Normal** - Each LED, mentioned above, is lit as applicable.
- **Start up** - The LEDs will cycle from left to right.
- **PassThru mode** - Network and Signal LEDs will blink in tandem. The Activity LED will blink when transmitting or receiving data.
- **SOS** - The Network LED blinks.
- **Configuration Reset** - The LEDs will cycle left to right and then right to left 4 times.
- **Authentication Failure** - The Network, Signal, and Activity LEDs blink every 2 seconds.
- **Data Retry** - The Network, Signal, and Activity LEDs blink every 3 seconds.

Optional: Setting up a DUN Connection

Dial-up Networking (DUN) allows a computer or other device to use the serial port or USB virtual serial port on your Raven XT to connect to the Internet or private network using PPP just like an analog modem using a standard phone line.

Caution: *To install any driver on your computer, you may need to be logged in as Administrator or have Administrator privileges for your login.*

Microsoft Windows XP is used in the examples below. The modem driver installation and DUN setup and configuration is similar in Microsoft Windows products. Examples are not provided here for installing the driver or configuring DUN for any other operating system.

Standard installations of Microsoft Windows XP and 2000 include a generic device driver which will work with your Raven XT.

1. Connect the Raven XT.
 - a. Connect the device to the computer with a DB-9 cable or the USB port in serial mode.
 - b. Plug in the AC adapter, connect the antenna(s) and power on the device.
2. Install the driver.
 - a. Select *Start > Control Panel > Phone and device Options* (in Classic View).

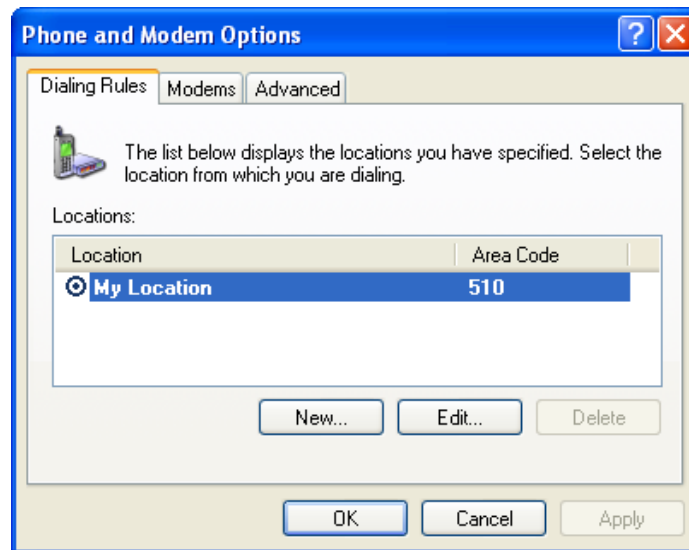


Figure 0-7: Phone and device Options

b. Select the *devices* tab.

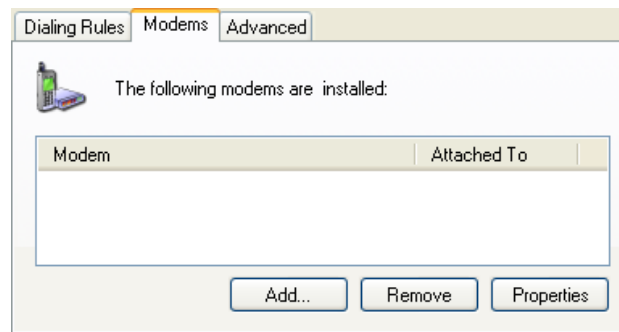


Figure 0-8: Phone and device Options: devices

c. Select *Add*.



Figure 0-9: Add Hardware Wizard

- d. Check *Don't detect my device; I will select it from a list*.
- e. Select *Next*.

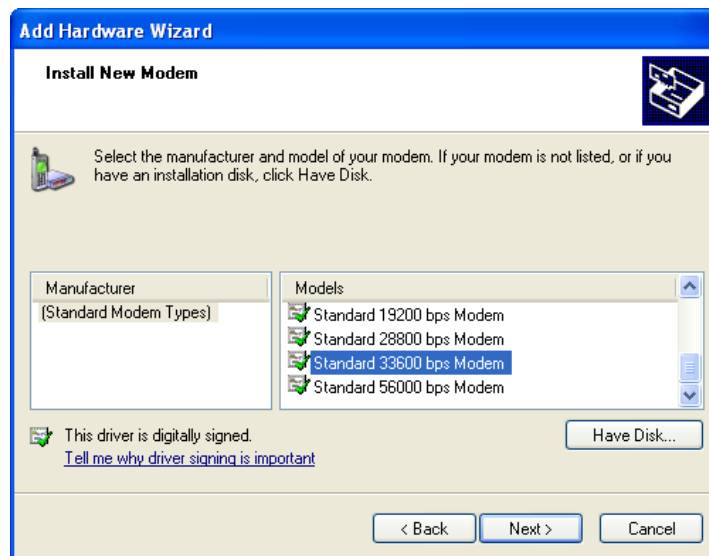


Figure 0-10: Add Hardware Wizard: Install New device

- f. Select *(Standard device Types)* from the Manufacturers column.
- g. Select *Standard 33600 bps device* from the Models column.

Tip: If you have the speed for your device configured as something other than the default, use the Standard device that matches the speed you configured.

- h. Select *Next*.

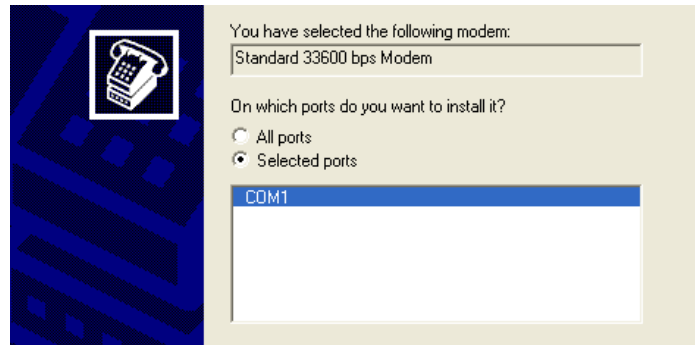


Figure 0-11: Add Hardware Wizard: Select Ports

- i. Check *Selected Ports*.
- j. Select the COM port the device is connected to (commonly COM1).
- k. Select *Next*.



Figure 0-12: Add Hardware Wizard: Finish

- l. Once the device driver is installed, select *Finish*.

When you return to the *Phone and device Options* window, you should see the newly installed device “attached to” the correct COM port.

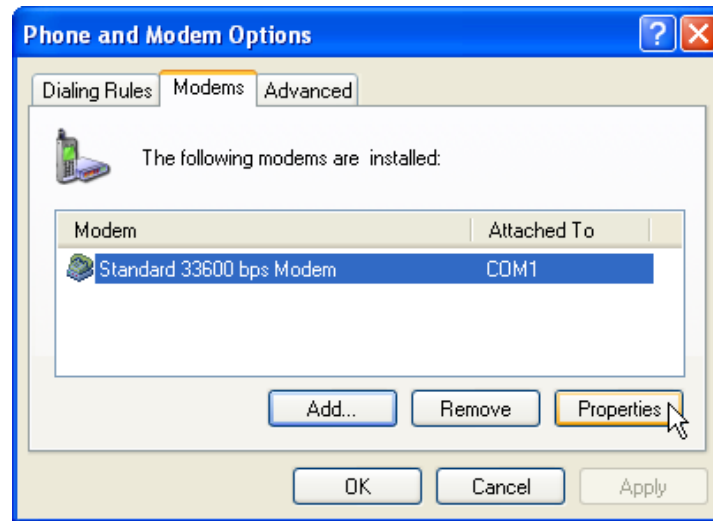


Figure 0-13: Phone and device Options: devices

- a. Highlight the device and select *Properties*.

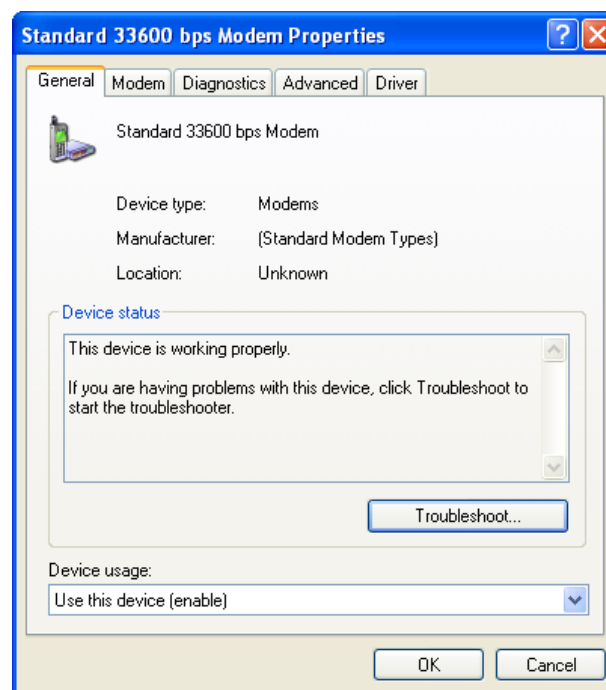


Figure 0-14: device Properties

- b. Select the *device* tab.

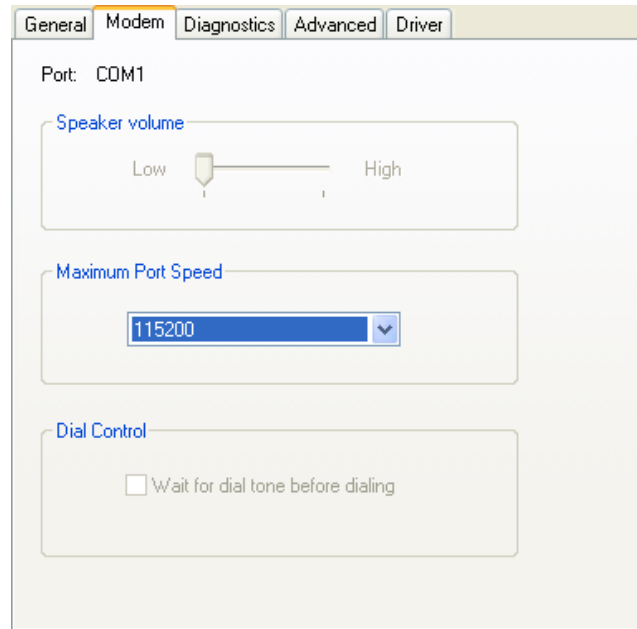


Figure 0-15: device Properties: device

- c. Maximum Port Speed should be set to 115200 (default).
- d. Select *OK* to exit.
- e. Select *OK* again to exit out of the Phone and device Options.

Creating a Dial-Up Networking (PPP) Connection

Once you have the driver for the modem installed on your computer, you can set up and configure Dial Up Networking (DUN) to use the modem as your connection to the Internet using PPP.

Note: No other device or program can be using the same COM port (serial port) configured for the modem driver.

Caution: If you have an existing LAN connection, installing DUN for the modem may interfere with the LAN connection. It's recommended to disconnect your LAN connection before using a PPP connection with your Raven XT.

Once the DUN connection is initiated, by default, it will take over as the “default route” for network communication and specifically for Internet access. If you want the two connections to co-exist, you will need to de-select “Use default gateway on remote network” (described later) and use the route command in Windows to setup routing through the modem properly. This guide does not provide information on the route command. You may need to consult with your network administrator to properly configure routing.

- a. Select *Start > Connect To > Show All Connections* to open the Network Connections window.

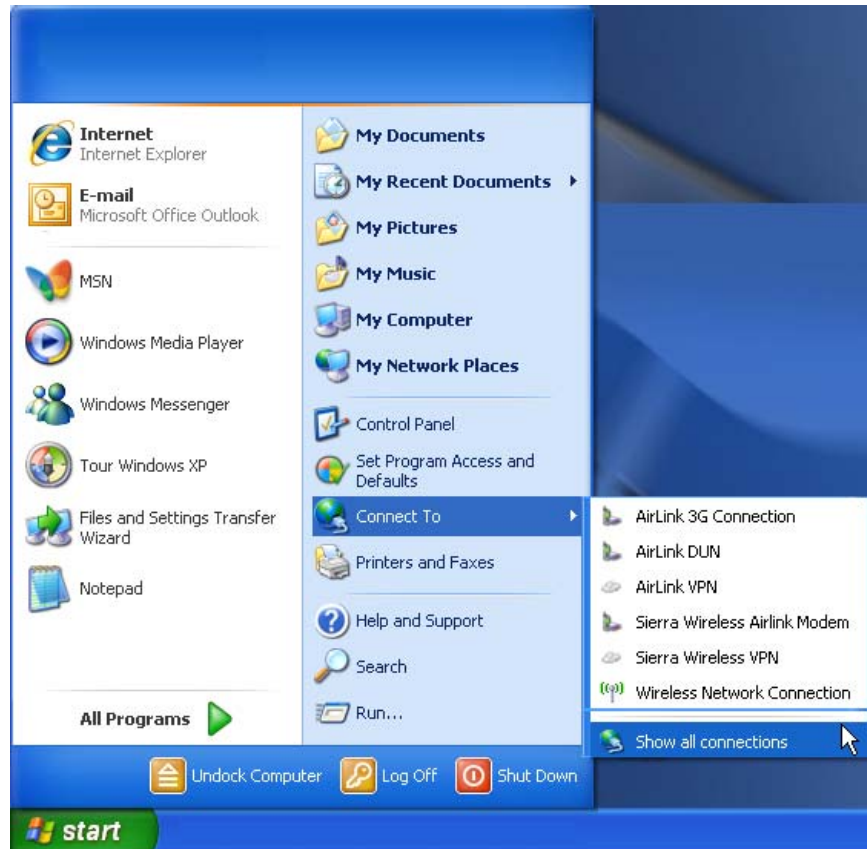


Figure 0-16: Windows : Start menu

- b. Select *Create a New Connection* under Network Tasks in the menu area on the left.

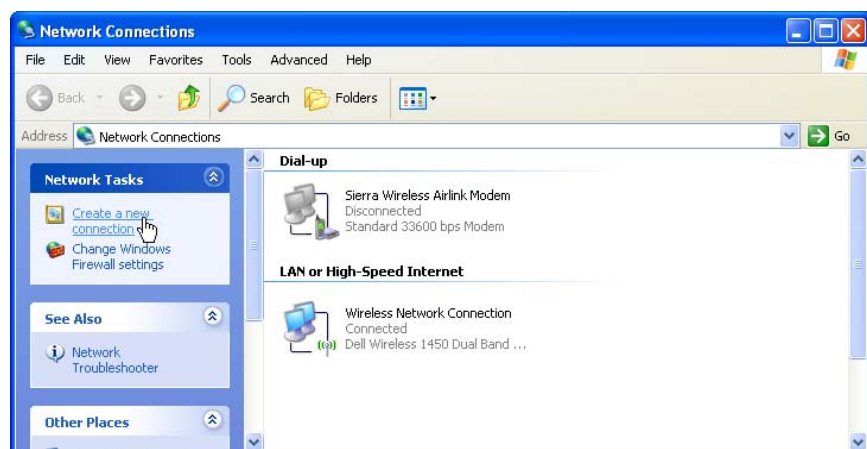


Figure 0-17: Create New Connection

- c. Select *Next* to start installing and configuring the DUN connection.

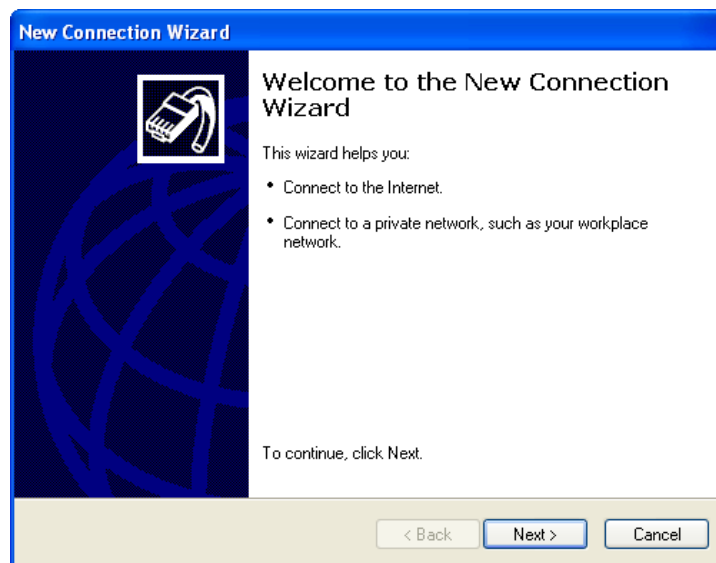


Figure 0-18: New Connection Wizard

- d. Select *Connect to the Internet*.
- e. Select *Next*.

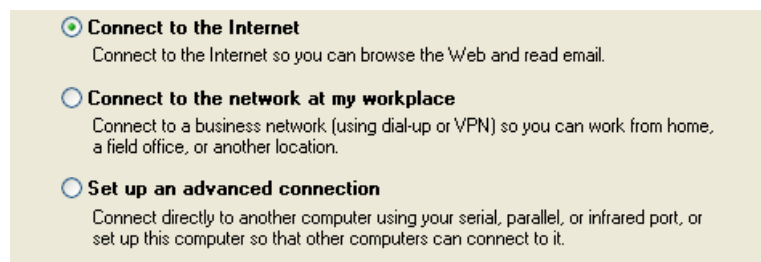


Figure 0-19: New Connection: Type

- f. Select *Set up my connection manually*.
- g. Select *Next*.

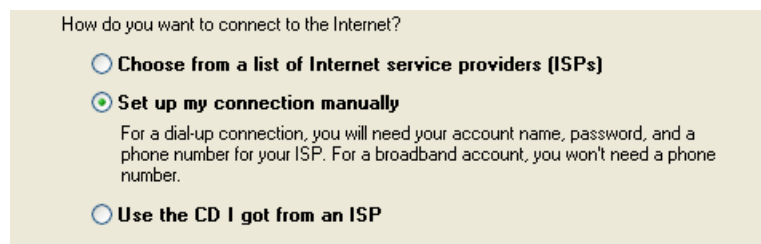


Figure 0-20: New Connection: How do you want to connect?

- h. Select *Connect using a dial-up modem*.
- i. Select *Next*.

☒ **Connect using a dial-up modem**
This type of connection uses a modem and a regular or ISDN phone line.

☐ **Connect using a broadband connection that requires a user name and password**
This is a high-speed connection using either a DSL or cable modem. Your ISP may refer to this type of connection as PPPoE.

☐ **Connect using a broadband connection that is always on**
This is a high-speed connection using either a cable modem, DSL or LAN connection. It is always active, and doesn't require you to sign in.

Figure 0-21: New Connection: Connect using...

- j. *Optional:* If you have multiple modems installed on your computer, you may be prompted to select the modem to be used. If you only have one modem installed, this option will be omitted.
- k. Check *Standard 33600 bps Modem*.
- l. Select *Next*.

You have more than one dial-up device on your computer.
Select the devices to use in this connection:

<input type="checkbox"/>	Modem - BCM V.92 56K Modem (COM3)
<input checked="" type="checkbox"/>	Modem - Standard 33600 bps Modem (COM1)

Figure 0-22: New Connection: Select Modem

- m. Type in a name for the connection, such as *Sierra Wireless AirLink Modem*.
- n. Select *Next*.

Type the name of your ISP in the following box.

ISP Name

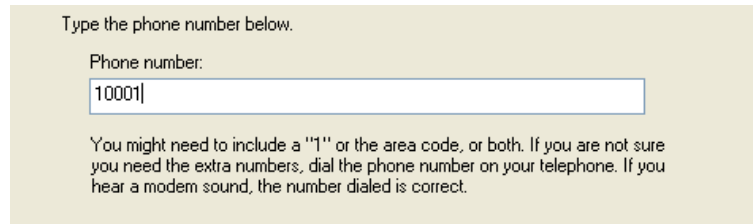
Sierra Wireless Airlink Modem

The name you type here will be the name of the connection you are creating.

Figure 0-23: New Connection: Connection Name

Tip: *The name provided here will not effect the connection in any way. It is only a label for the icon. It can be the name of your wireless service provider (Provider), your modem (Raven XT), or any other designation for the connection.*

- o. Type in *10001* as the phone number for the modem to dial.
- p. Select *Next*.



Type the phone number below.

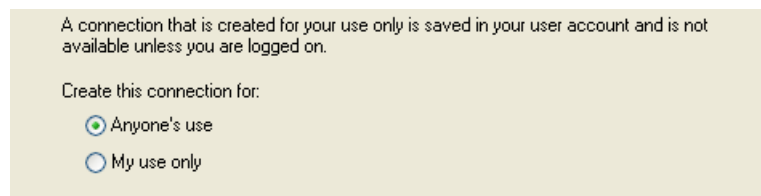
Phone number:

10001

You might need to include a "1" or the area code, or both. If you are not sure you need the extra numbers, dial the phone number on your telephone. If you hear a modem sound, the number dialed is correct.

Figure 0-24: New Connection: Phone Number

- q. *Optional:* If you have multiple users configured for your computer, you may be prompted for Connection Availability. If you select *My use only*, the account currently logged on will be the only one able to use this DUN connection.
- r. Select *Next*.



A connection that is created for your use only is saved in your user account and is not available unless you are logged on.

Create this connection for:

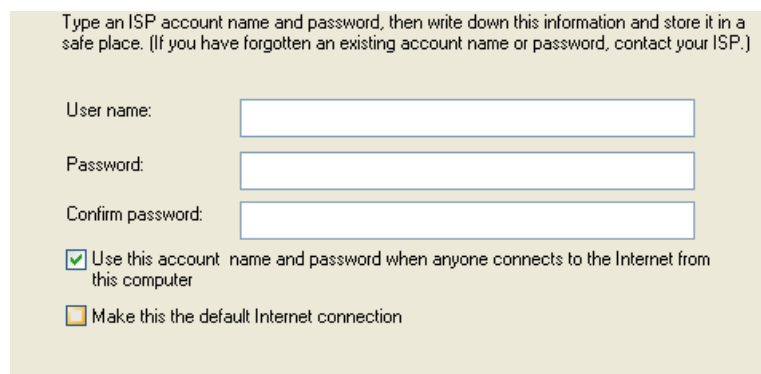
☒ Anyone's use

☐ My use only

Figure 0-25: New Connection: Permissions

Generally the modem takes care of the Account Information, User name and Password, for the connection, so you can leave the fields blank (unless otherwise instructed by Support).

- s. If you want to allow others to use the same login for the modem, select *Use this account name and password...*
- t. Select *Next*.



Type an ISP account name and password, then write down this information and store it in a safe place. (If you have forgotten an existing account name or password, contact your ISP.)

User name:

Password:

Confirm password:

☒ Use this account name and password when anyone connects to the Internet from this computer

☐ Make this the default Internet connection

Figure 0-26: New Connection: Connection Information

Caution: If you have a LAN connection to the Internet and select *Make this the default Internet Connection* for the DUN configuration, you will not be able to use the LAN to connect to the Internet and may also affect the network connection on your computer to the rest of the LAN. Select this option *ONLY* if the Raven XT will be your sole network connection.

- u. If you want to add a shortcut for this DUN connection to your desktop, check *Add a shortcut*.
- v. Select *Finish* to exit the Network Connection Wizard.



Figure 0-27: New Connection: Finish

1. Configure the DUN connection

After you complete the New Connection Wizard, there are a few more things you will want to configure in the connection.

- a. Select *Properties*.



Figure 0-28: DUN Connection

- b. Uncheck *Use dialing rules*.
- c. Check *Show icon...when connected*.
- d. Select *Configure*, below the Connect using line.

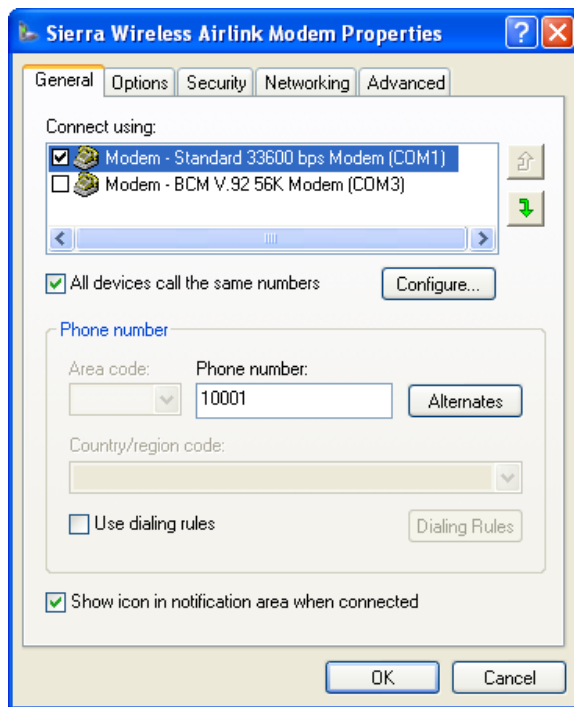


Figure 0-29: DUN Properties

- e. Select *115200* as the Maximum speed.
- f. Check *Enable hardware flow control*.
- g. Do not check any other option.
- h. Select *OK*.

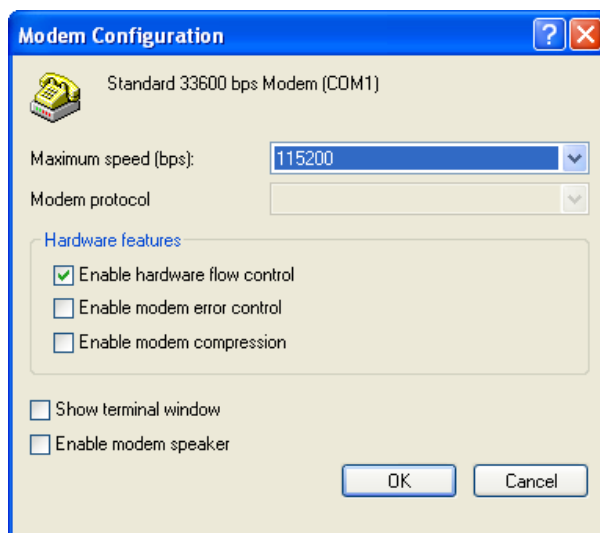


Figure 0-30: Modem Configuration

- i. Back at the main properties screen, select the *Networking* tab.

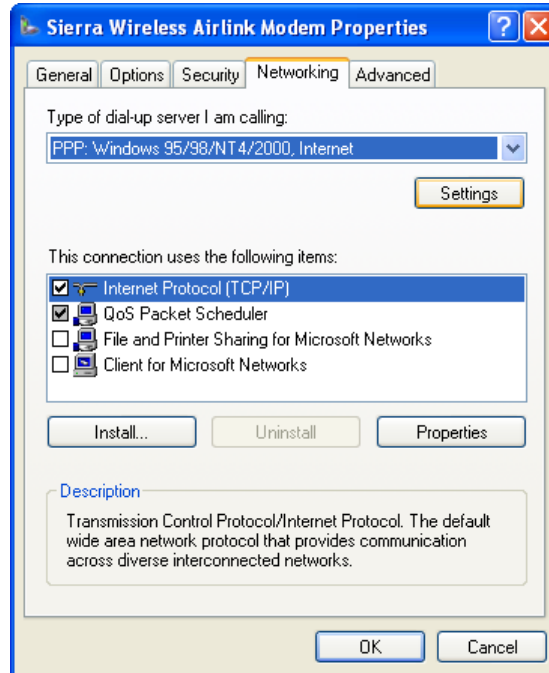


Figure 0-31: Networking

- j. Select *Settings*.
- k. Remove the checks from all three PPP settings.
- l. Select *OK*.

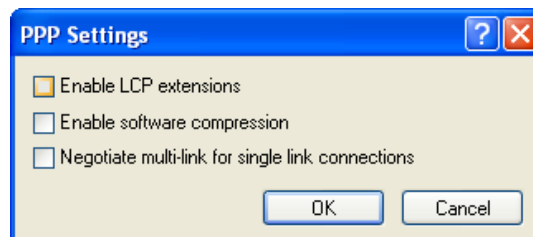


Figure 0-32: PPP Settings

- m. Select (highlight) Internet Protocol (TCP/IP) and then select *Properties*.

Tip: For most configurations, you will be obtaining the IP address and the DNS server address automatically.

- n. Select *Advanced*.

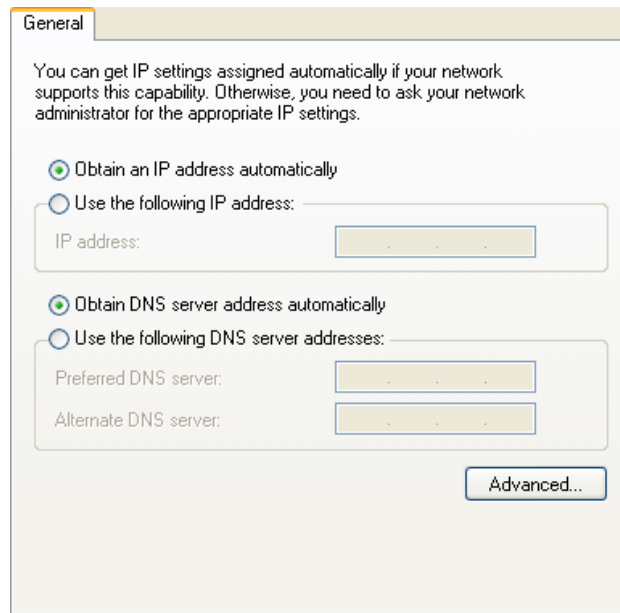


Figure 0-33: TCP/IP Properties

- o. Uncheck *Use IP header compression*.
- p. Check *Use default gateway on remote network*.
- q. Select *OK*.

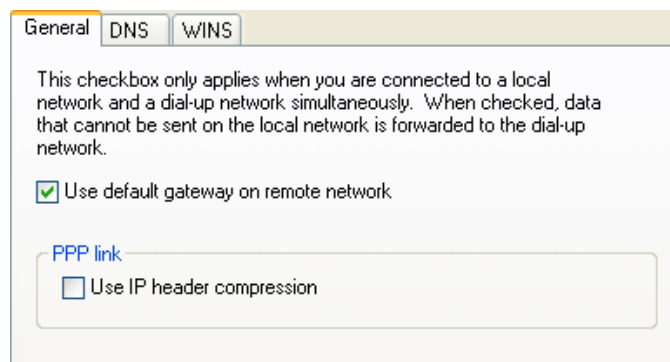


Figure 0-34: Advanced TCP/IP

Tip: You may want to check the *Options* tab and change the settings for applications you might be using. The default options are generally applicable for most uses.

Caution: Unless specifically directed to do so by Support or your network administrator, you do not need to make any changes to the options on the *Security* tab.

- r. Select *OK* until you return to the *Connect* window.

Connecting to the Internet Using DUN

There are two methods you can use to connect with Raven XT to the Internet using DUN, AceView and the Windows DUN connection directly.

ACEview

ACEview is a small utility which can maintain your DUN connection and monitor the connection of your Raven XT to Provider. If you have not already installed ACEview you can obtain the most recent version from the Sierra Wireless AirLink website.

Note: The direct DUN connection features of ACEview are not available in Windows 98 or Windows NT.

This guide assumes you have a default installation of ACEview.

1. Start ACEview.

Start > All Programs > AirLink Communications > ACEview

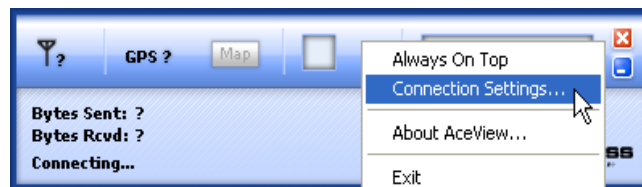


Figure 0-35: ACEview: Menu

- a. Right-click on the ACEview window to open the menu.
- b. Select *Connection Settings*.

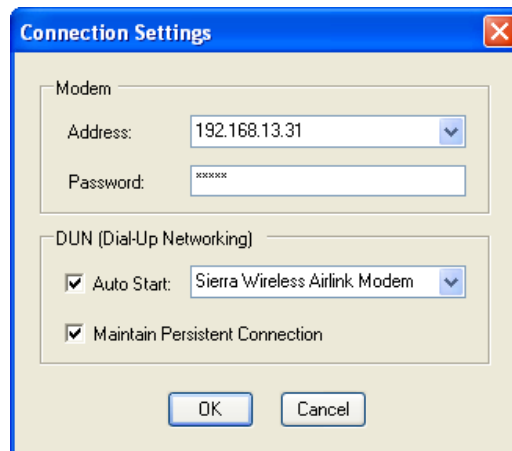


Figure 0-36: ACEview: Connection Settings

- c. Select *Auto Start* in the DUN section.
- d. Select *Maintain Persistent Connection*.

When checked, ACEview will continually check the DUN connection to ensure it is not down. If so, ACEview will attempt to connect again.

Tip: When using the DUN connection, make sure the IP Address is set to the local IP address of the modem, 192.168.13.31 by default.

- e. Select *OK*.
- f. *OK*.

Windows DUN

You can directly use the Dial-up link for the DUN connection.

1. Start the DUN session.

Start > Connect To > Sierra Wireless AirLink Modem

If you named the connection differently, use the name of the PPP connection you made earlier.



Figure 0-37: DUN Connection

Tip: Generally you will not need to enter a Username or Password. If you do need to enter either, you can enter these parameters beforehand using **NETUID* and **NETPW*.

2. Select *Dial* to connect to the modem and the cellular network.

Note: The speed shown in the connection is the speed between the modem and your computer, it is not the speed of the modem's connection to Provider or the Internet.

When you're connected, an icon should appear in the system tray showing the connection status.

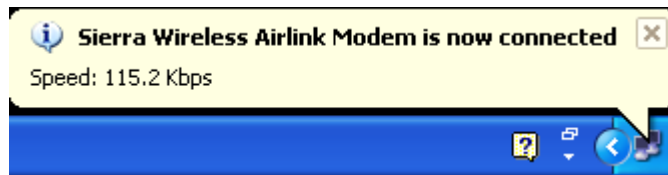


Figure 0-38: Connection indicator

Caution: *For DUN connections on a Windows Mobility or other non-personal computer, the DNS settings may not be configured with the DUN connection. You may need to go into the network settings and add DNS servers manually.*

