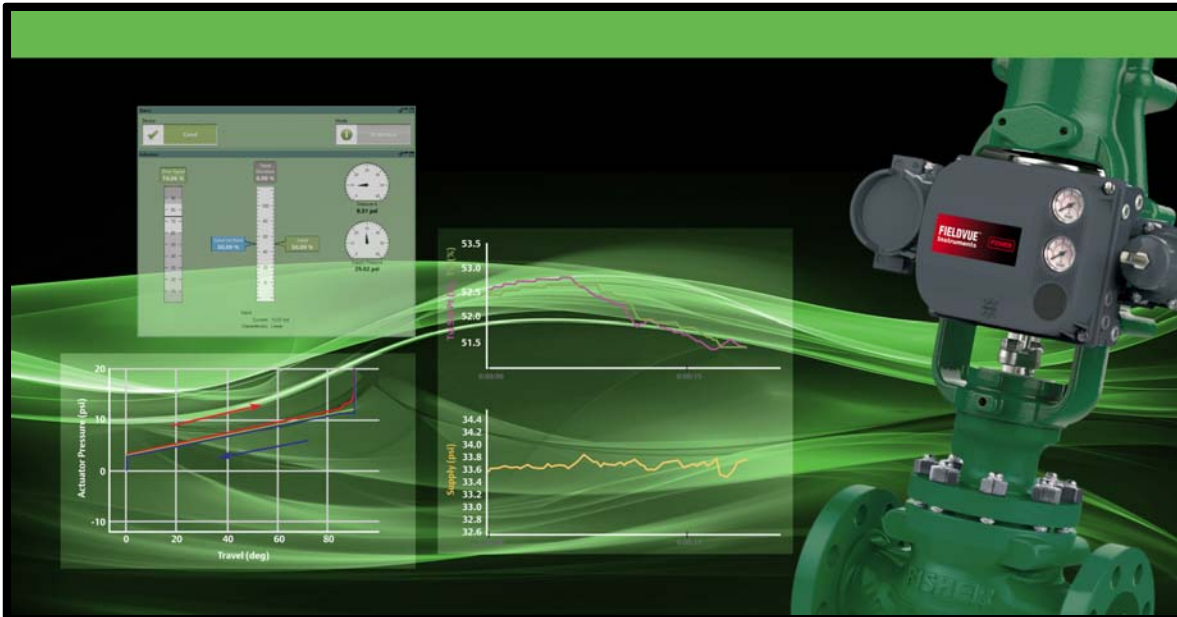


ValveLink™ Software



ValveLink Software Quick Start Guide

- ValveLink™ Solo
- ValveLink™ SNAP-ON™
- ValveLink™ DTM
- ValveLink™ PLUG-IN for PRM®

Refer to the ValveLink Software Installation CD for the ValveLink Software Installation Guide ([D102800X012](#))

Table of Contents

ValveLink Solo for HART® Instruments	1-1
ValveLink Solo for FOUNDATION™ Fieldbus Instruments .	2-1
ValveLink SNAP-ON	3-1
ValveLink DTM	4-1
ValveLink PLUG-IN for PRM	5-1
Toolbar Buttons and Icons	6-1

Section 1

ValveLink Solo for HART Instruments

This section contains quick-start information for ValveLink Solo connected to HART communicating instruments through a HART modem. Information about connecting HART multiplexers is available in the ValveLink Software Installation Guide. For more information on using ValveLink Solo, see ValveLink help. For information on using ValveLink software toolbar buttons, see section 6 of this document.

Note

This section assumes ValveLink Solo is installed. The ValveLink Software Installation Guide, found on the ValveLink Software installation CD, provides detailed installation information.

Step 1: Attach the HART modem to the computer

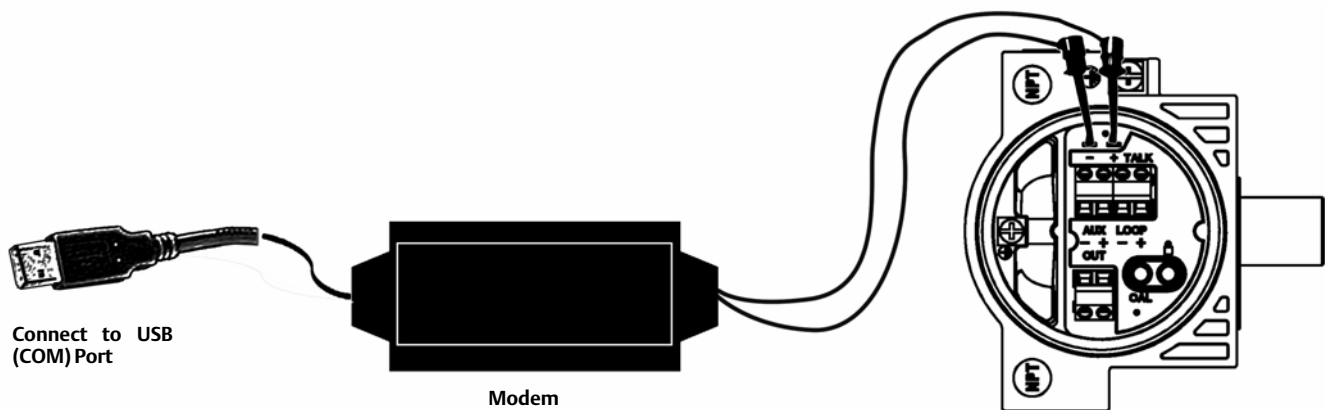
Note

If you do not have a HART modem or FIELDVUE digital valve controller available, proceed to Step 3.

Attach the HART modem to the USB port (COM port) selected during installation.

Step 2: Attach the HART modem to the FIELDVUE instrument

Figure 1-1. Instrument Connections



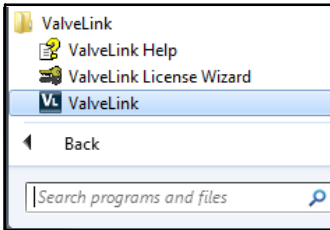
E0350-1

Clip the HART modem leads to the FIELDVUE instrument TALK terminals.

Apply 4-20 mA power to the FIELDVUE Instrument LOOP + and - terminals.

Step 3: Start ValveLink Solo

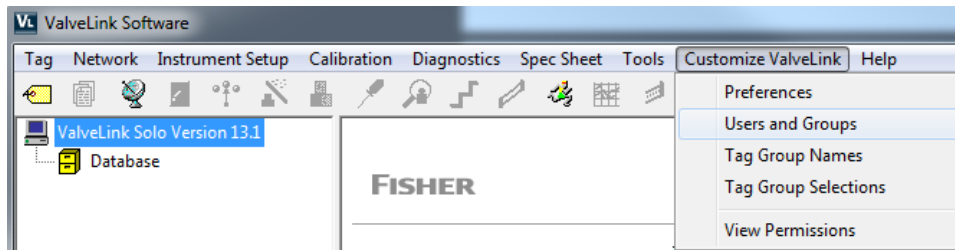
Figure 1-2. Starting ValveLink Solo



Click the Start button. From the Start menu select Programs > ValveLink > ValveLink.

Step 4: Go to Customize ValveLink > Users and Groups, as shown in figure 1-3.

Figure 1-3. Customize ValveLink > Users and Groups

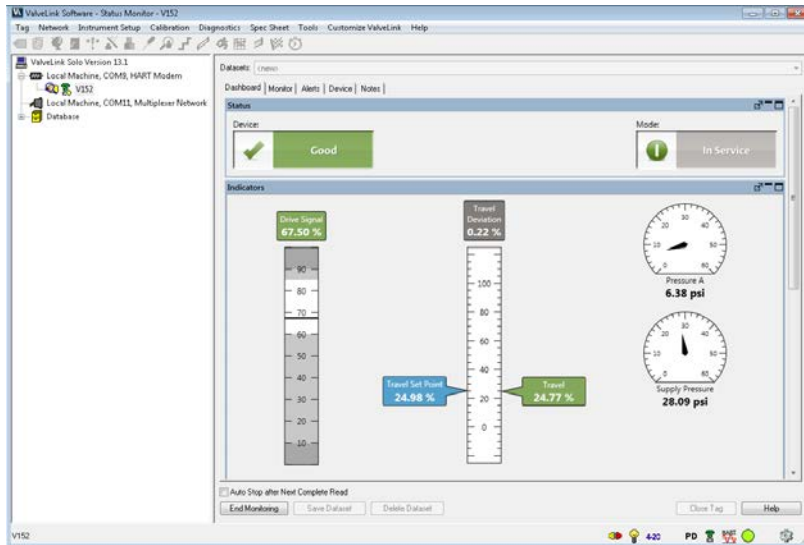


Step 5: Add the appropriate Windows User and assign permissions.

For additional information on this, refer to Section 8, Users and Permissions, in the Installation Guide, available on the ValveLink installation CD.

Step 6: Status Monitor Diagnostic. Click Start Monitoring to begin collecting information from the instrument.

Figure 1-4. Device Connection View Showing the Status Monitor Dashboard



When ValveLink Solo starts up, it displays the connected devices in the left pane of the window (Device Connection View).

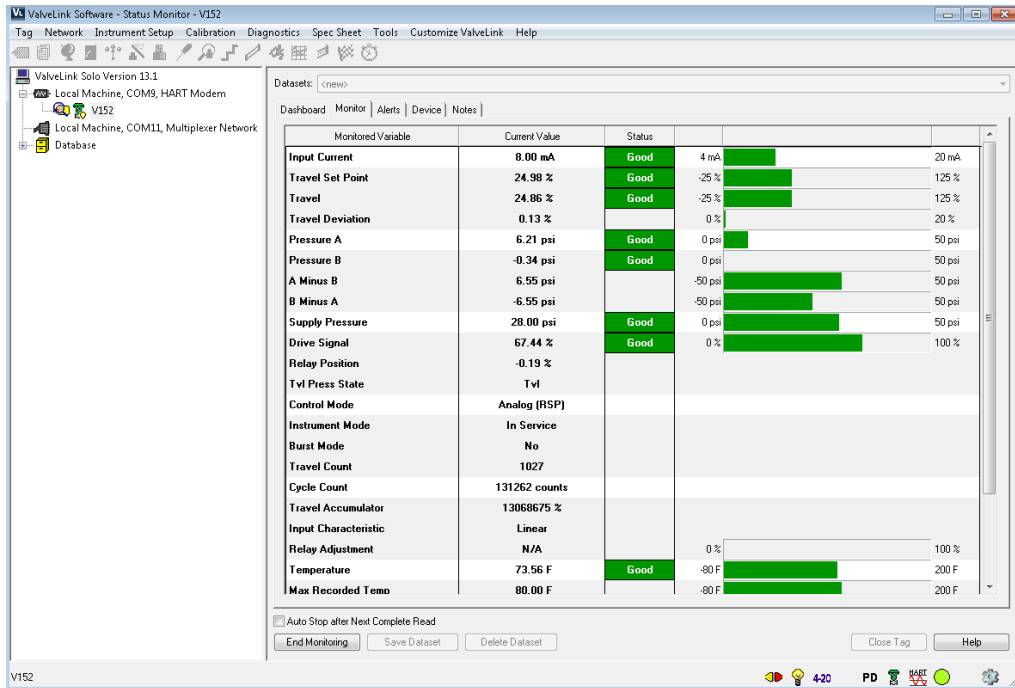
Double click on the valve symbol to open the Status Monitor Diagnostic.

Note

If you do not see a valve symbol, you may not be connected to a FIELDVUE instrument. Recheck Step 1 and Step 2, then right click on the HART modem symbol and select Scan for New.

Step 7: The Monitor Tab will display live device parameters.

Figure 1-5. Status Monitor - Monitor Tab



Section 2

ValveLink Solo for FOUNDATION Fieldbus Instruments

This section contains quick start information for ValveLink Solo connected to a single FOUNDATION fieldbus instrument. For more information about connecting to a single instrument, or for information about connecting to an H1 segment, see the ValveLink software Installation Guide. For information on using ValveLink software toolbar buttons, see section 6 of this document.

Communicating with FOUNDATION fieldbus instruments requires National Instruments NI-FBUS hardware and software or the Emerson 770 USB Fieldbus Interface.

Note

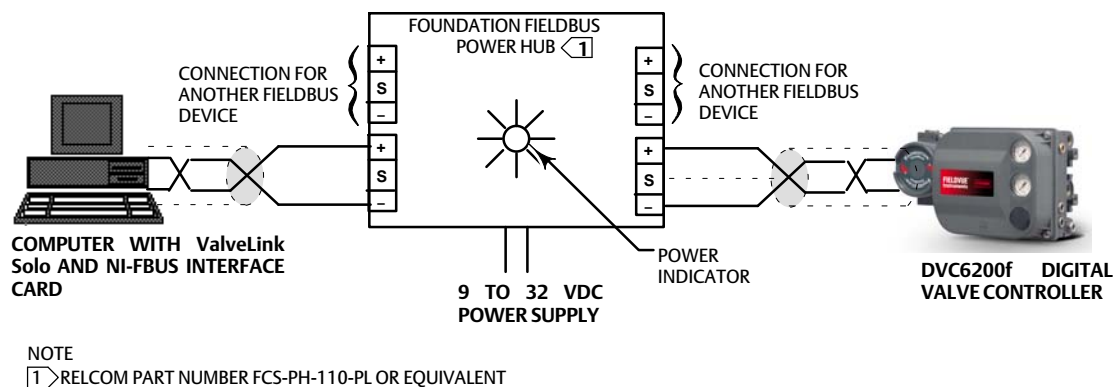
This section assumes ValveLink Solo and the associated National Instruments hardware and software are installed. The ValveLink Software Installation Guide, found on the ValveLink software installation CD, provides information for installing these components.

Step 1: Connect the computer to a FOUNDATION Fieldbus digital valve controller

Figure 2-1 shows how to connect to a single instrument with a fieldbus power hub (Relcom part number FCS-PH-110-PL, or equivalent). The power hub provides a power supply and double terminator. Up to four devices can be connected to the Relcom power hub. The computer with ValveLink Solo and the NI-FBUS interface card is considered as one device. This product is used for bench testing. It is not designed for field applications.

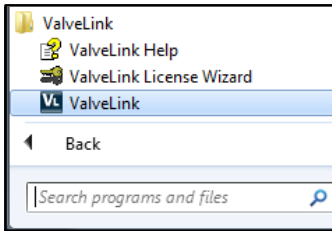
For more information on connecting to fieldbus instruments, see the ValveLink software Installation Guide.

Figure 2-1. Typical Connection to a DVC6200f Digital Valve Controller



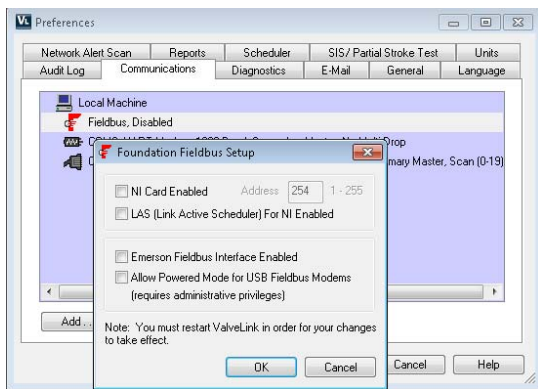
Step 2: Start ValveLink Solo

Figure 2-2. Starting ValveLink Solo



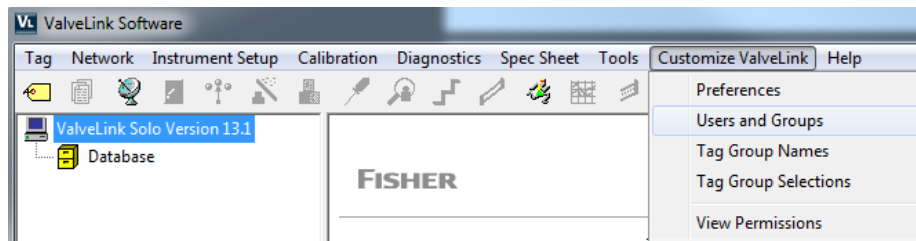
Click the Start button. From the Start menu select Programs > ValveLink > ValveLink.
Navigate to Customize ValveLink > Preferences > Communications to select the appropriate Fieldbus settings.

Figure 2-3. FOUNDATION Fieldbus Settings



Step 3: Go to Customize ValveLink > Users and Groups, as shown in figure 2-4.


Figure 2-4. Customize ValveLink > Users and Groups



Step 4: Add the appropriate Windows User and assign permissions.

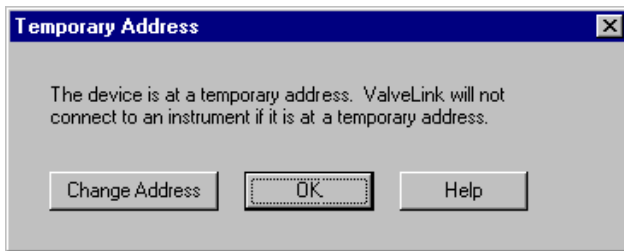
For additional information on this, refer to Section 8 “Users and Permissions” of the Installation Guide, available the ValveLink installation CD.

Step 5: After NI-FBUS completes start up, double click the instrument icon to open its tag for the status monitor.

If a  appears over the instrument symbol ValveLink Solo is not connected to the instrument. A possible reason for not connecting may be that the instrument is at a temporary address. ValveLink Solo will not connect to an instrument at a temporary address.

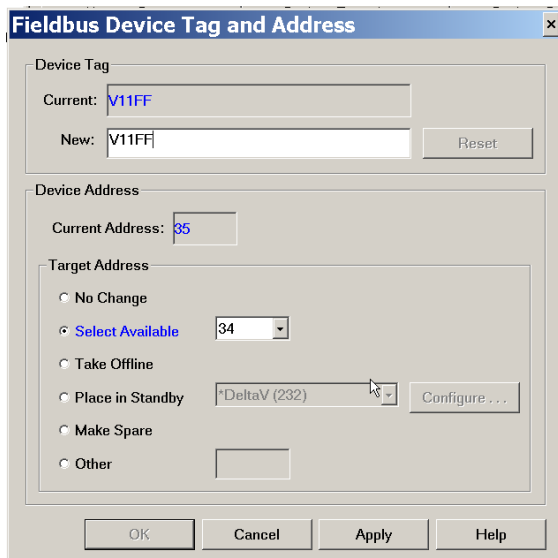
If the instrument is at a temporary address, the Temporary Address window shown in figure 2-5 appears when you attempt to open the instrument tag. To change the device tag and address, click the Change Address button.

Figure 2-5. Digital Valve Controller at a Temporary Address. Click Change Address to change the Device Tag and Address



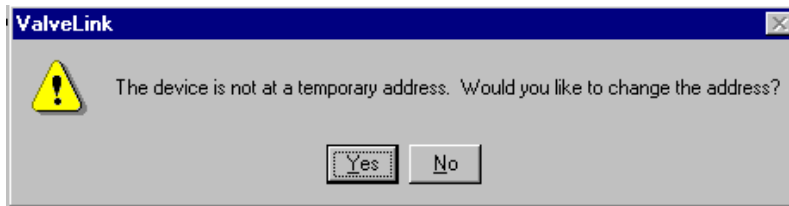
On the Change Device Tag and Address window, shown in figure 2-6, enter a working address for the device. Address 35 is preferred. However, if you are connected to an H1 segment, address 35 may be in use by another device. Select an unused address between 21 and 35. Click Set Address then click the Change Address button to assign the new address. When the address changes, click the Done button. The instrument should be connected and you may proceed with instrument startup, calibration, and diagnostics.

Figure 2-6. Changing the Device Address



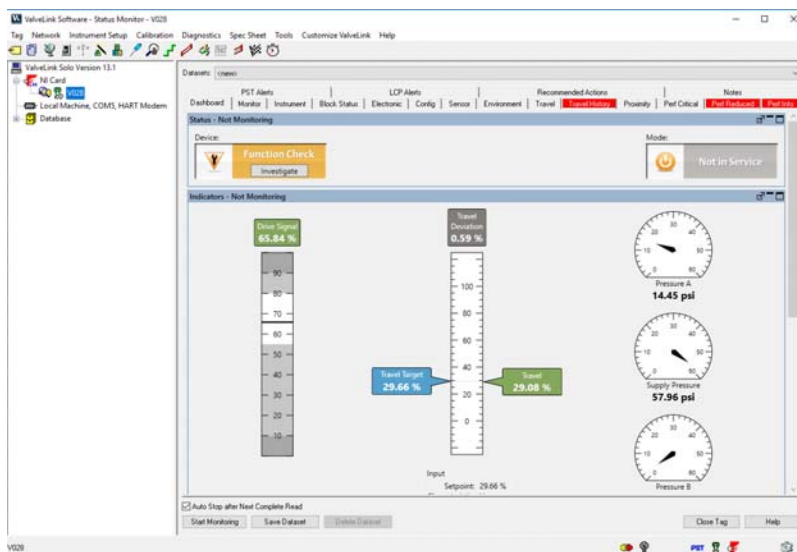
When you attempt to log out or exit ValveLink Solo, if the instrument was at a temporary address when you started, the message shown in figure 2-7 appears. You may leave the instrument at the set address or allow it to return to the temporary address. Click No to keep the set address or Yes to return to a temporary address.

Figure 2-7. Reminder of Instrument Address Change



Step 6: Status Monitor Diagnostic. Click Start Monitoring to begin collecting information from the instrument.

Figure 2-8. Device Connection View Showing the Status Monitor Dashboard



When ValveLink Solo starts up, it displays the connected devices in the left pane of the window (Device Connection View).

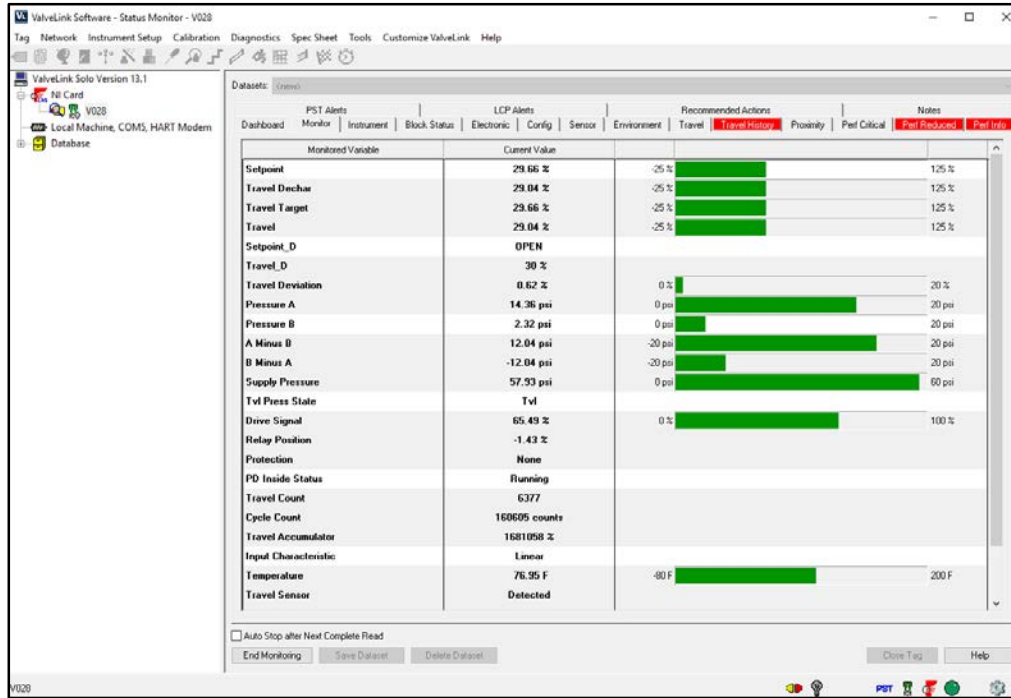
Double click on the valve symbol to open the Status Monitor Diagnostic.

Note

If you do not see a valve symbol, you may not be connected to a FIELDVUE instrument. Recheck previous steps, then right click Fieldbus interface and click Refresh Network.

Step 7: The Monitor Tab will display live device parameters.

Figure 2-9. Status Monitor - Monitor Tab



Section 3**ValveLink SNAP-ON for AMS Device Manager**

This section contains quick start information for ValveLink SNAP-ON.

Note

This section assumes AMS Device Manager and ValveLink SNAP-ON are installed. See AMS Device Manager documentation for installation information. The ValveLink Software Installation Guide, found on the ValveLink software installation CD, gives detailed installation information for installing the ValveLink SNAP-ON.

CAUTION

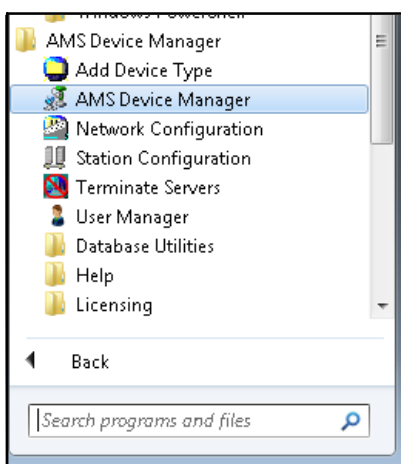
Do not run ValveLink Solo at the same time you are using AMS Device Manager or AMS Device Manager with ValveLink SNAP-ON.

Note

To successfully use the ValveLink SNAP-ON, you must be familiar with using AMS Device Manager.

Step 1: Start AMS

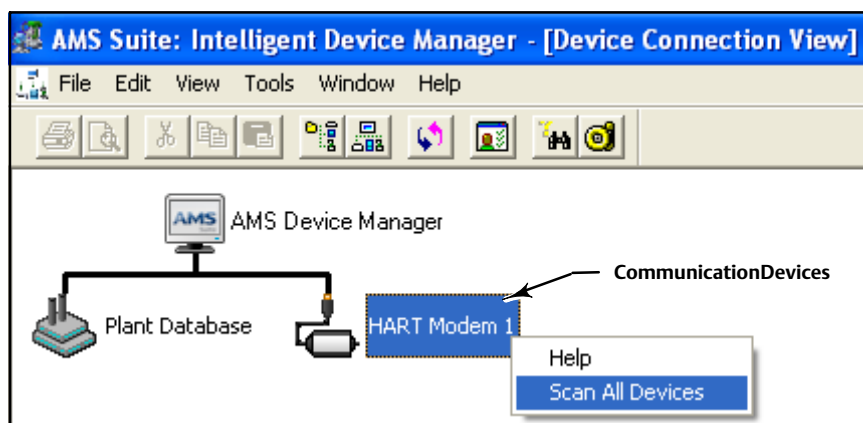
Figure 3-1. Enter the AMS System



Click a desktop icon or select AMS Device Manager from the Programs > AMS Device Manager.

Step 2: Select a HART device

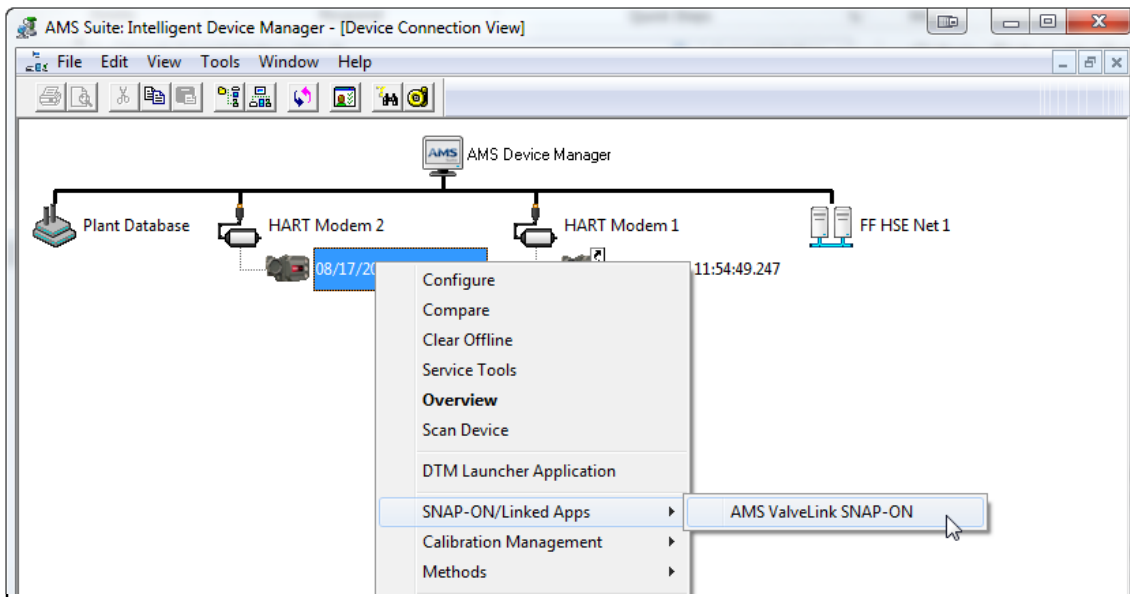
Figure 3-2. AMS Device Connection View (HART Device)



In the Device Connection View window, right click the communication devices (modem, multiplexer) icon and select Scan All Devices.

Step 3: Start ValveLink SNAP-ON for AMS Device Manager

Figure 3-3. Starting ValveLink SNAP-ON (HART Device)



Right click the instrument icon and click SNAP-ON/Linked Apps > AMS ValveLink SNAP-ON.

Section 4 **ValveLink DTM**

This section contains quick start information for ValveLink DTM.

Note

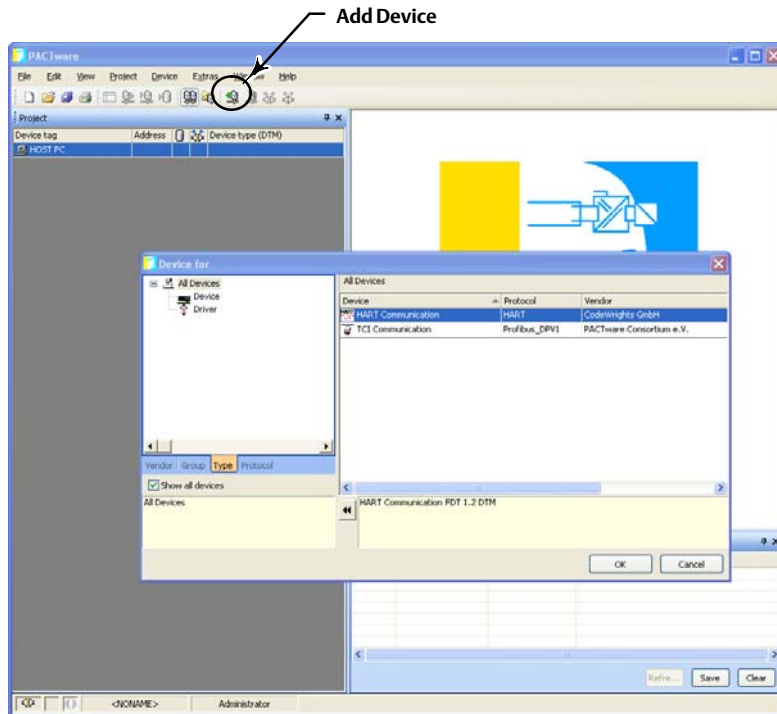
This section assumes ValveLink DTM is installed. The ValveLink Software Installation Guide, found on the ValveLink software installation CD, provides detailed installation information.

Note

To successfully use the ValveLink DTM, you must be familiar with using the FDT frame application used to launch the ValveLink DTM. The information found in this section covers one example. Refer to the users guide for the FDT frame application that the ValveLink DTM is installed with for additional information.

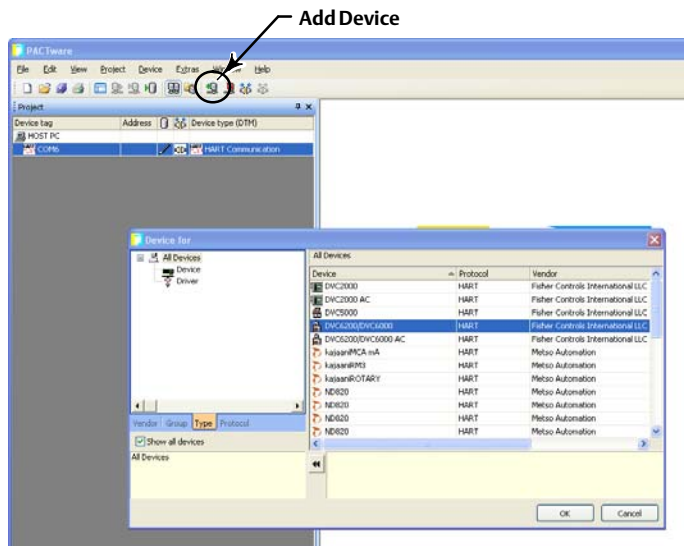
- Step 1: Start the FDT frame application.
- Step 2: Select Add Device, as shown in figure 4-1, and click on the appropriate CommDTM. Select OK.

Figure 4-1. Select Add Device to Add the CommDTM



- Step 3: With the CommDTM highlighted, select Add Device, as shown in figure 4-2, and click on the appropriate Device DTM. Select OK.

Figure 4-2. Select the DeviceDTM



Step 4: Set the appropriate settings for the CommDTM and DeviceDTM (see figure 4-3 and 4-4).

Figure 4-3. Setting the CommDTM

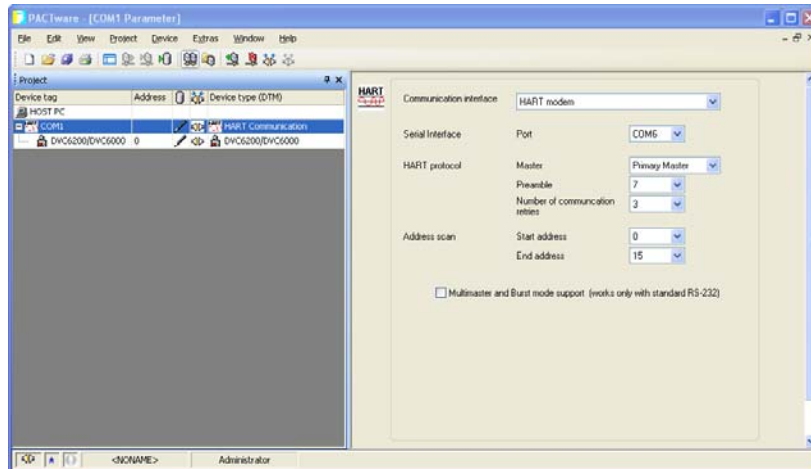
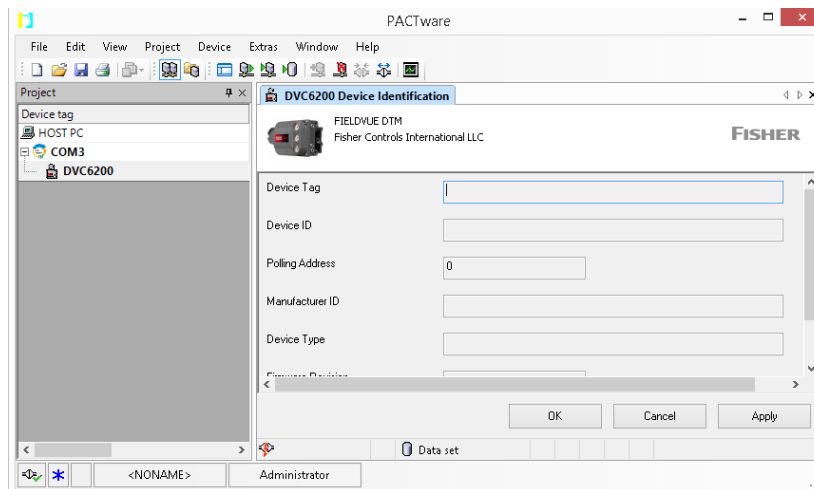
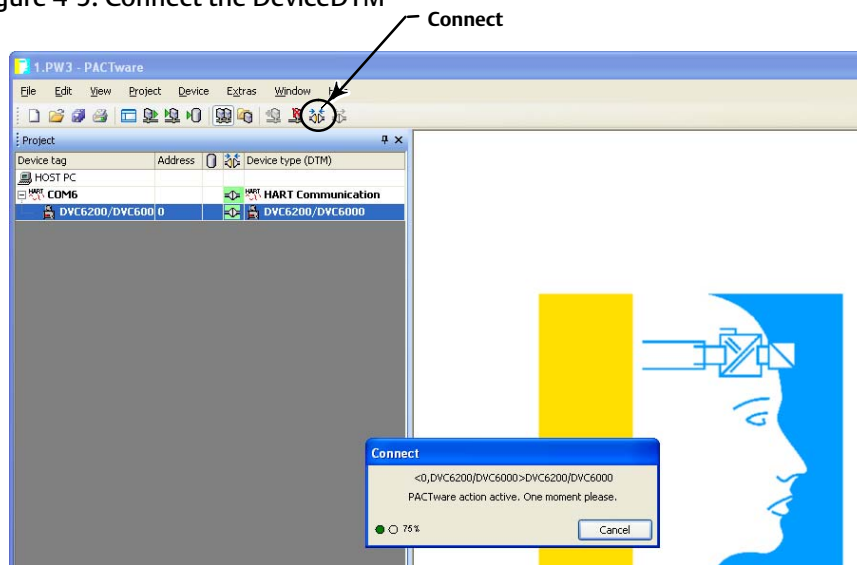


Figure 4-4. Setting the DeviceDTM



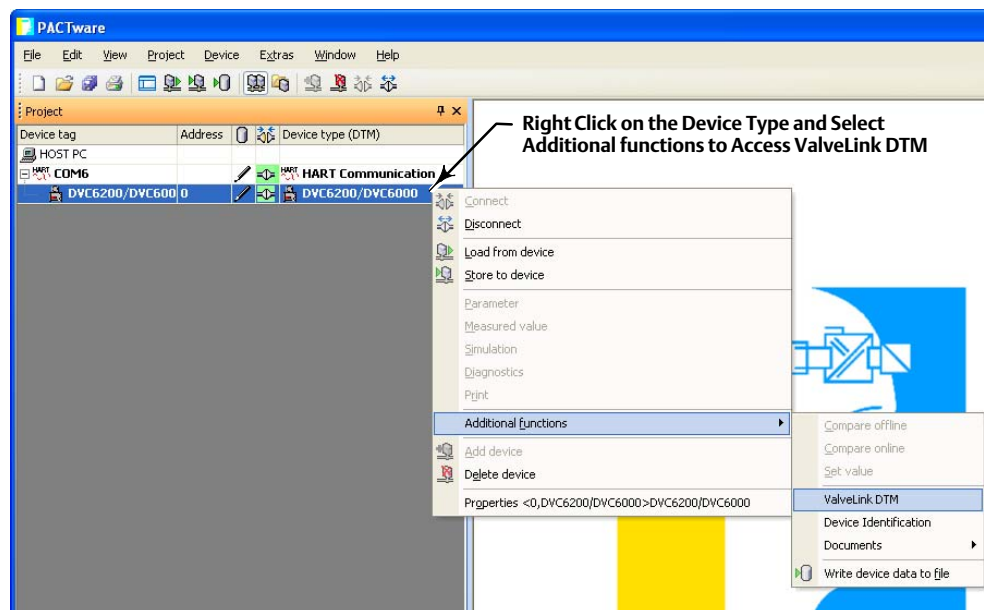
Step 5: With the DeviceDTM highlighted, select Connect as shown in figure 4-5.

Figure 4-5. Connect the DeviceDTM



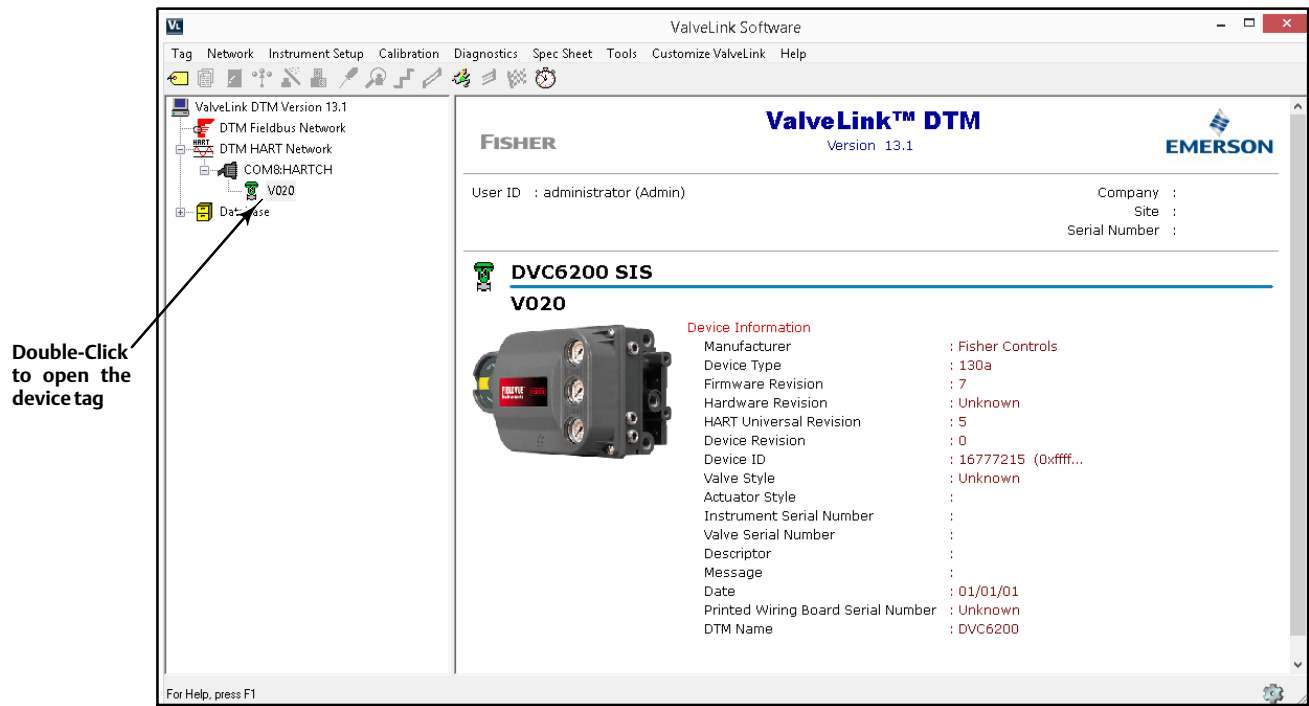
Step 6: Once connected, select ValveLink DTM as shown in figure 4-6.

Figure 4-6. Select ValveLink DTM



Step 7: The ValveLink DTM will launch in a new window. All devices currently connected in the FDT frame application will show in the tree menu to the left of the ValveLink DTM window, as shown in figure 4-7. Double-click the device to open the device tag.

Figure 4-7. ValveLink DTM



Section 5

ValveLink PLUG-IN for PRM

This section contains quick start information for ValveLink PLUG-IN for PRM.

Note

This section assumes ValveLink PLUG-IN for PRM is installed. The ValveLink Software Installation Guide, found on the ValveLink software installation CD, provides detailed installation information.

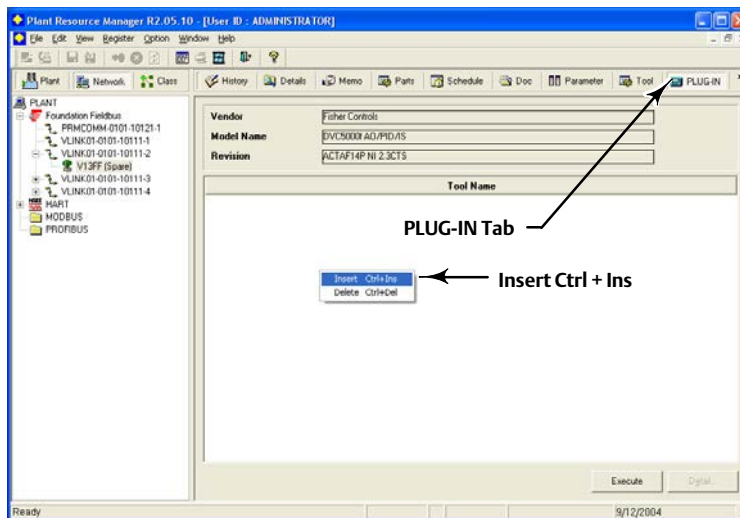
Note

To successfully use ValveLink PLUG-IN for PRM, you must be familiar with using PRM software.

- Step 1: Run the PRM application.
- Step 2: Select a Fisher fieldbus digital valve controller from the PRM system.
- Step 3: Click on the PLUG-IN tab.

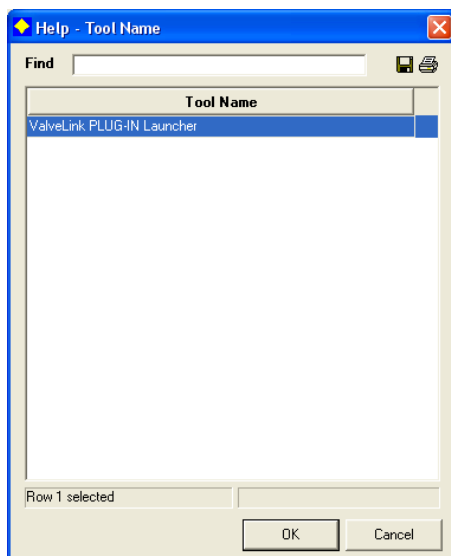
Move the mouse cursor to the white list box, as shown in figure 5-1 and right-click. Select the Insert Control + Ins option.

Figure 5-1. PLUG-IN Tab



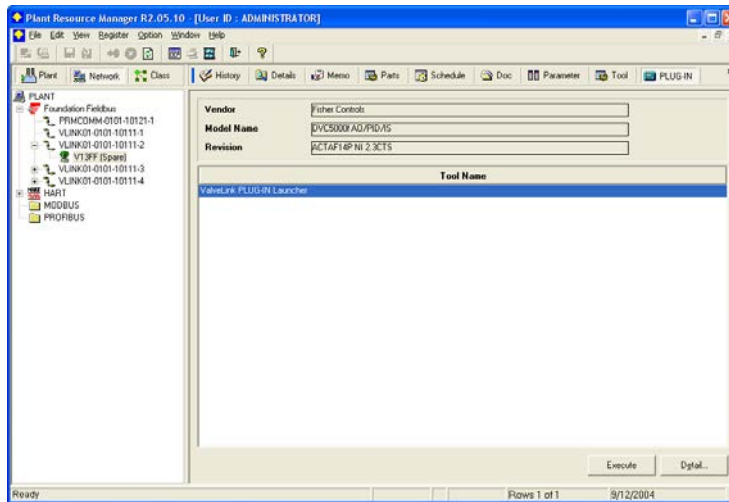
- Step 4: Select ValveLink PLUG-IN Launcher from the Tool Name dialog box and click on the OK button.

Figure 5-2. Tool Name Dialog Box



Step 5: Select ValveLink PLUG-IN Launcher and click on execute to start ValveLink PLUG-IN for PRM.

Figure 5-3. Starting ValveLink PLUG-IN Launcher



Section 6 Buttons and Icons

This section describes the buttons and icons available on the ValveLink software toolbar and tree views.

Tool Bar Buttons

Toolbar buttons are shortcuts to ValveLink software commands.



Manage Tags—Opens the Tag Management window for locating a specific tag. From the Tag Management window you can open, modify, copy, or delete a selected tag. You can also print a report containing information from the listed tags.



Dataset Report—Create a report containing the currently open dataset.



Network Scan—Opens the Network Alert Scan window and allows you to scan selected tags. Using the Setup button you can select which tags to scan and which alerts to scan for.



Instrument Mode—For DVC6200, DVC2000, DVC6000, and retired DVC5000 instruments, allows changing the instrument mode between In Service and Out of Service. For DVC6200f, DVC6000f, and retired DVC5000f instruments, allows changing the Analog Output block, Resource block, and Transducer block target mode to another of the permitted modes. A mode of Out of Service may be required to change a setup parameter, or to run a calibration procedure or diagnostic test.



Control Mode—For DVC6200, DVC2000, DVC6000, and DVC5000 instruments only. Changes the instrument control mode between Analog and Digital. Control mode defines where the instrument reads its set point. Choose Analog if the instrument is to receive its set point over the 4-20 mA loop. Choose Digital if the instrument is to receive its set point digitally via the HART communications link.



Setup Wizard—Starts the Setup Wizard to permit automatic setup and travel calibration of the instrument using specified actuator information.



Detailed Setup—Opens the Detailed Setup window for the open tag. Provides options for defining an instrument's operating parameters. You can retrieve information from the ValveLink software database or from the instrument. You can also modify this data and save changes in the database or download them to the instrument.



Auto Travel Calibration—Opens the Auto Travel Calibration window for the open tag. Available only on software with calibration enabled. See the ValveLink software Help screen, About ValveLink, to see if calibration is enabled.



Instrument Status—Displays the Instrument Status window for the open tag. Provides device monitor, alert, and device information for an open tag.



Step Response—Opens the Step Response window for the open tag. Plots TRAVEL versus the TIME it takes to move the valve through the specified steps. Available only on software with step response enabled.



Dynamic Scan—A diagnostic test used to ramp the valve from one end to the other and back, generating Valve Signature, Dynamic Error Band, and Drive Signal graphs.



Batch Runner—Opens the Batch Runner dialog box to create a batch of calibration, diagnostic, or other tasks. With Batch Runner you can automate a user-selected group of operations to run on one or more instruments.



Trending Button—For DVC6200, DVC2000, DVC6000, and DVC5000 instruments only. Displays operating parameter trends as they occur (live data), a parameter trend history (trend archive), and a valve travel histogram. Trend is set up from the Network Alert Scan window.



Partial Stroke Test—For SIS or PST devices, opens Partial Stroke and Demand/Reset Data.



Performance Diagnostics— includes: PD One Button, Supply Pressure, Relay Adjustment, Travel Deviation, I/P and Relay Integrity, Air Mass Flow, and Valve Friction.



Scheduler—Opens the Scheduler window. Scheduler allows you to run various types of tests at predefined intervals without user intervention. The resulting data is available for later viewing and analysis.

Treeview Icons

Valve icons on the device tree indicate the instrument service mode of the associated physical device.

There are three modes which are reflected in the treeview icons. Travel Control, Pressure Control and SIS. If the instrument is in Travel Control, all icons associated with it will be green. Pressure Control is indicated by blue icons, and SIS is indicated by yellow icons. The following treeview icons are seen in each of the control modes.



Sliding Stem/Spring and Diaphragm Actuator - In Service—Indicates that a sliding stem valve and a spring and diaphragm actuator are currently in service.



Sliding Stem Valve/Piston Actuator - In Service—Indicates that a sliding stem valve and a piston actuator are currently in service.



Rotary Valve / Spring and Diaphragm Actuator - In Service— Indicates that a rotary valve and a spring and diaphragm actuator are currently in service.



Rotary Valve / Piston Actuator - In Service— Indicates that a rotary valve and a piston actuator are currently in service.



Out of Service—An unlit light bulb on the lower right portion of the valve image indicates that the device is out of service.



Communications Problem—A red X over the lower right portion of the valve image indicates that an error has occurred during the last communication attempt with the device.



Unknown Instrument Mode—A blue question mark over the lower right portion of the valve image indicates the instrument mode is unknown.



Scheduled Task Running—A valve image with a stopwatch indicates that ValveLink is currently running a scheduled task with this device.

For information, contact your local Emerson sales office or Local Business Partner, or visit Fisher.com

Neither Emerson, Emerson Automation Solutions, nor any of their affiliated entities assumes responsibility for the selection, use or maintenance of any product. Responsibility for proper selection, use, and maintenance of any product remains solely with the purchaser and end user.

ValveLink, Fisher, FIELDVUE, PlantWeb, and DeltaV are marks owned by one of the companies in the Emerson Automation Solutions business unit of Emerson Electric Co. Emerson Automation Solutions, Emerson, and the Emerson logo are trademarks and service marks of Emerson Electric Co. HART is a registered trademark of FieldComm Group. FOUNDATION Fieldbus is a trademark of FieldComm Group. All other marks are the property of their respective owners.

The contents of this publication are presented for informational purposes only, and while every effort has been made to ensure their accuracy, they are not to be construed as warranties or guarantees, express or implied, regarding the products or services described herein or their use or applicability. All sales are governed by our terms and conditions, which are available upon request. We reserve the right to modify or improve the designs or specifications of such products at any time without notice.

Emerson Automation Solutions

Marshalltown, Iowa 50158 USA

Sorocaba, 18087 Brazil

Cernay, 68700 France

Dubai, United Arab Emirates

Singapore 128461 Singapore

www.Fisher.com

