

Quick Start Guide

UNITY EdgeConnect

· VIRTUAL APPLIANCES ·

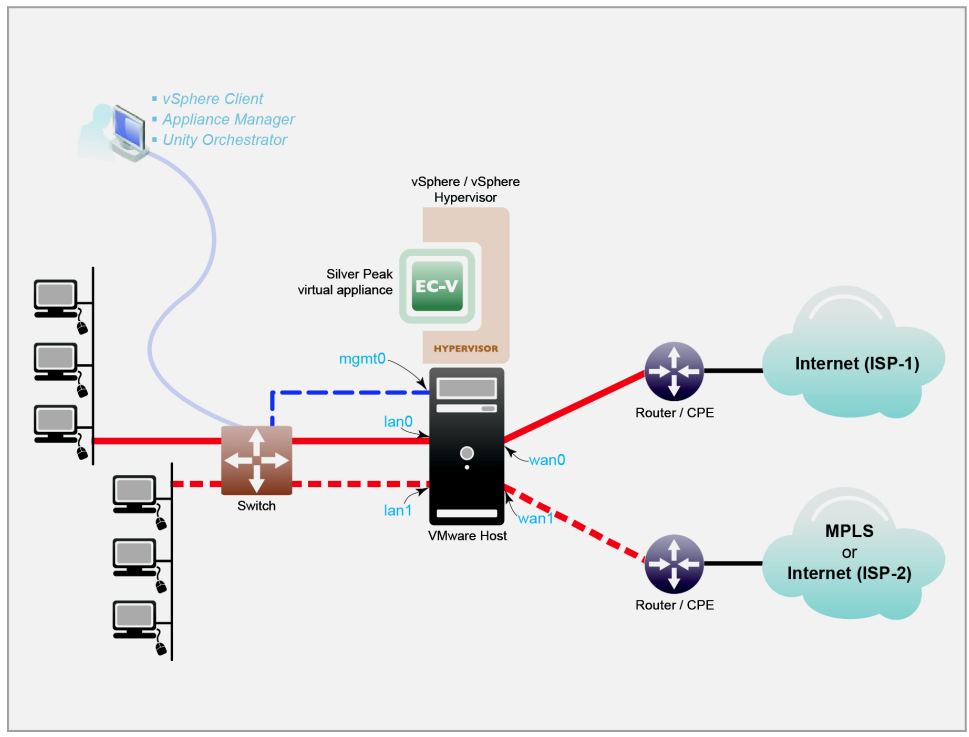
VMware vSphere /
vSphere Hypervisor

· In-Line Router Mode ·

© 2016 Silver Peak Systems, Inc.

If you're not using VMware vSphere Client 5.1, your screens may vary.

Host with Silver Peak EC-V appliance In-Line Router Mode



This Quick Start Guide covers in-line Router mode, which uses **wan0** and **lan0** for data traffic. Additionally, this diagram shows a typical deployment where **wan1** is added to provide access to a second ISP.

Before You Begin

- Log in to the [Silver Peak Support portal](#) and download the virtual appliance OVF template file.
- Verify that you've received the email containing your Account Name and Account Key.
- Collect the IP addresses for:
 - VMware vSphere server
 - **mgmt0** [if not using DHCP, then also the default gateway for mgmt0]
 - **wan0** and optionally, **wan1** [if not using DHCP, then also the next-hop IPs for the router/CPE devices]
 - **lan0** and optionally, **lan1**

NOTE: When you download the OVF template file and save it, Internet Explorer may change the suffix from **.ova** to **.tar**. If it does, change the suffix back to **.ova**.

IMPORTANT - READ THIS FIRST

You **must** install and register your Orchestrator with the Silver Peak Cloud Portal **BEFORE** setting up an EdgeConnect appliance. After Orchestrator is registered with your account name and key, you can proceed with EdgeConnect installation.

If you don't know or are unsure what role the Orchestrator plays, please contact your network architect or deployment lead.

SUMMARY OF TASKS

- 1** Deploy the EC-V virtual appliance's OVF template
- 2** Establish management connectivity
- 3** Add LAN and WAN interfaces
- 4** Complete the Appliance Manager initial configuration wizard
- 5** Register the appliance with the Orchestrator



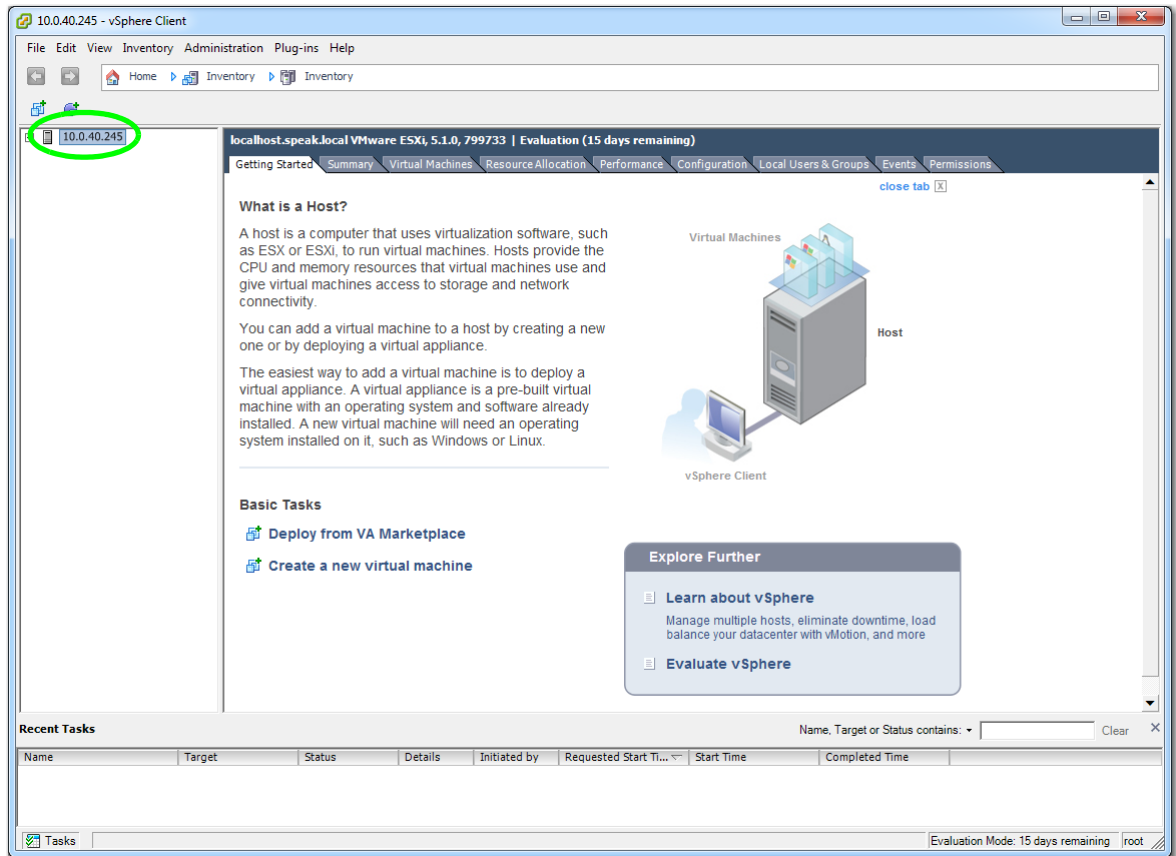
Silver Peak Systems, Inc.
2860 De La Cruz Blvd.
Suite 100
Santa Clara, CA 95050

1.877.210.7325 (toll-free in USA)
+1.408.935.1850
www.silver-peak.com/support

Deploy the EC-V virtual appliance's OVF template

- a. Launch the vSphere client, enter the IP address for the VMware vSphere host.

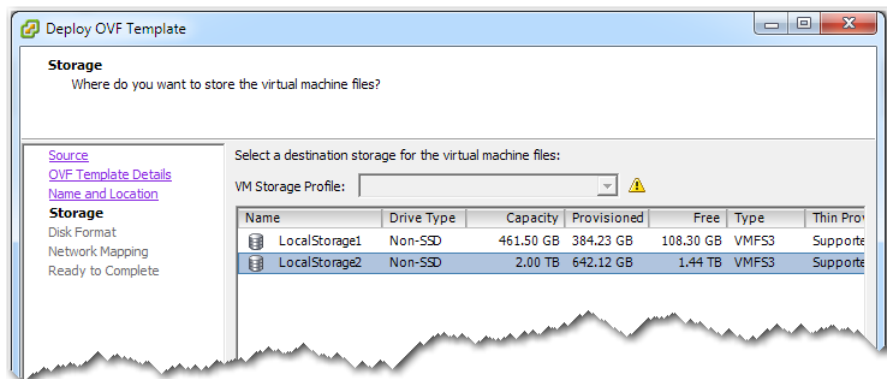
The host interface appears.



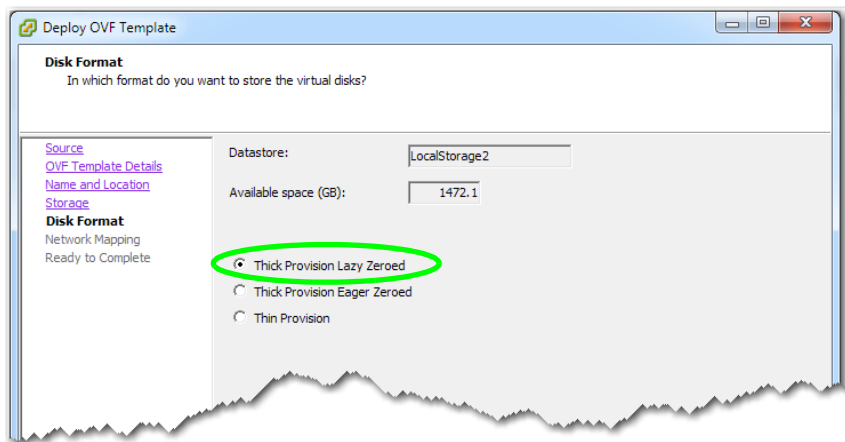
- b. From the **File** menu, select **Deploy OVF Template**, and follow the steps in the wizard.

NOTE: On the Name and Location page, we changed the virtual appliance's default name to **MySilverPeak**, to make this example more generic.

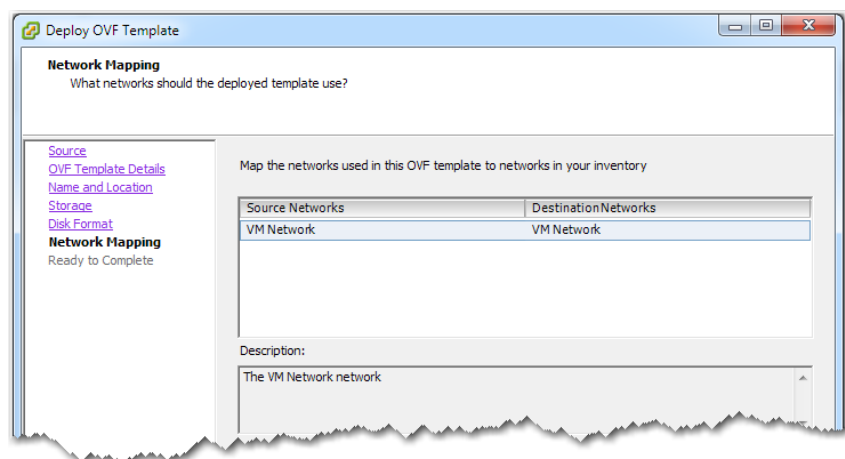
- c. When the Storage page appears, verify that the **storage** is a **minimum of 30 GB**.



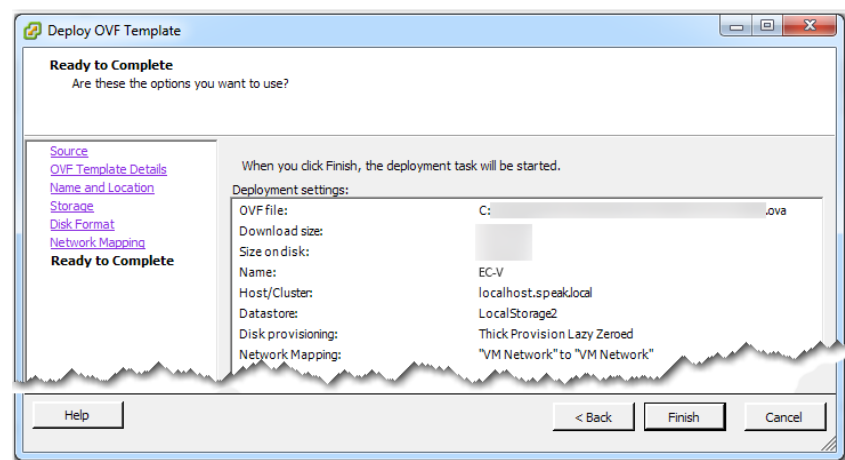
- d On the Disk Format page, make sure to select **Thick Provision Lazy Zeroed**.



- e The Network Mapping page defaults to selecting **VM Network**. If this is not appropriate in your circumstances, then select the one that is.



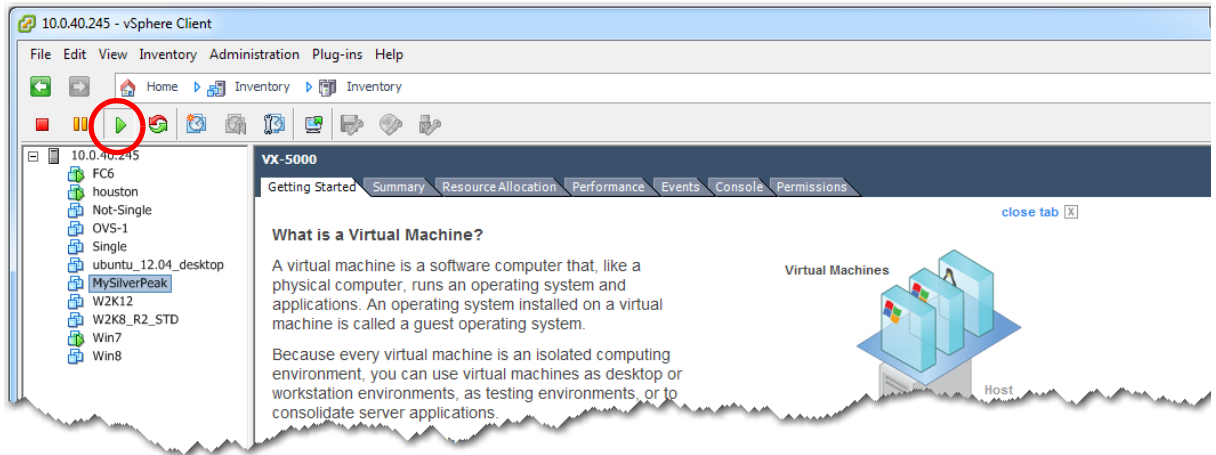
- f When the Ready to Complete page appears, go to the bottom of the page and click **Finish**.



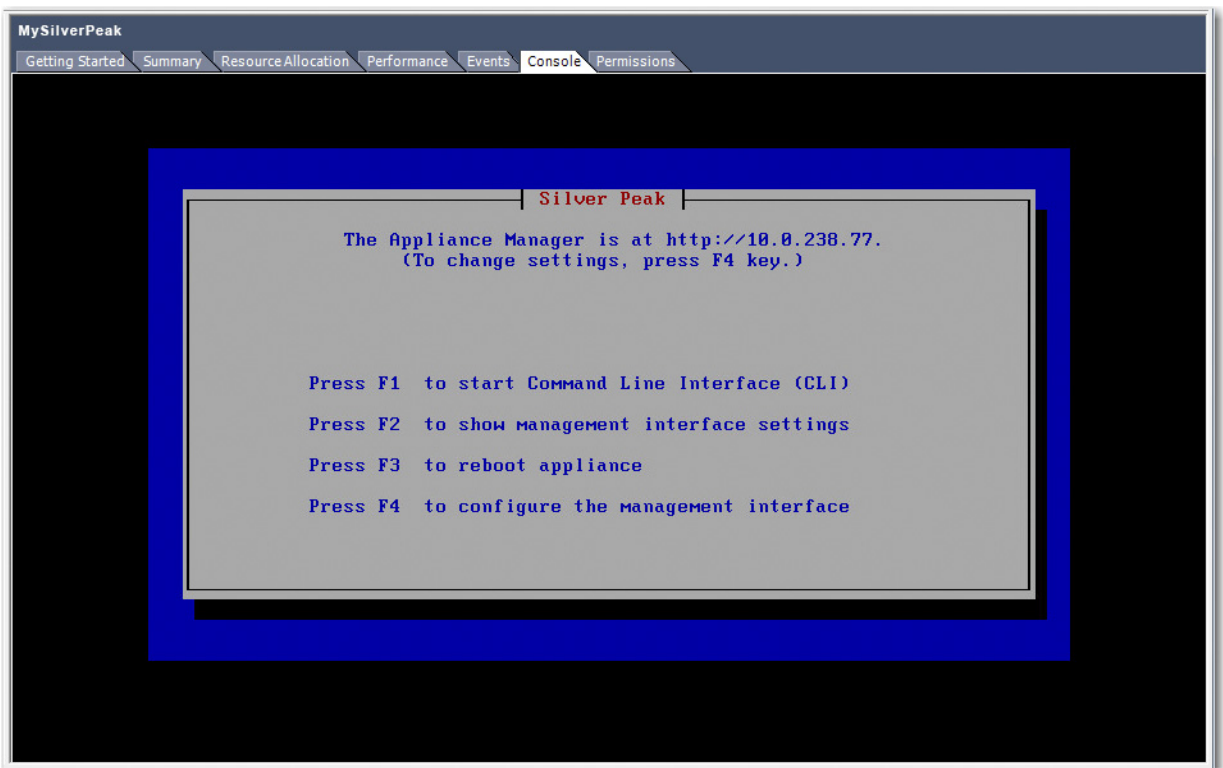
The Silver Peak appliance deploys.

2 Establish management connectivity

- a. In the vSphere Client, select the newly deployed virtual appliance and click  to power it on.

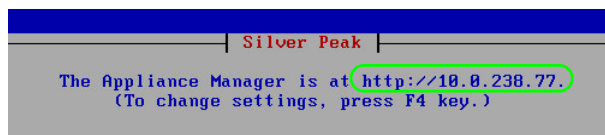


- b. Click the **Console** tab. The Silver Peak Console User Interface appears.

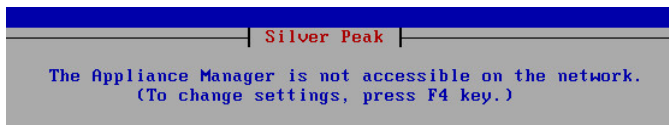


- c. The next task is to determine the virtual appliance's IP address:

- **If you're using DHCP**, the virtual appliance IP address displays in Silver Peak's Console User Interface.



- **If you're not using DHCP**, then you must configure the static IP address and default gateway.



In the virtual appliance console, press function key, **F4**, and complete the remaining steps.

When prompted to choose the type of management interface, select **Static** (as opposed to **DHCP**).

After selecting **Apply**, you can review the settings by selecting function key, **F2**.

-
- d. To verify connectivity, press function key, **F1**, and enter the following command sequence:

```
[ec-v-appliance] > enable [ENTER]
```

```
[ec-v-appliance] # show ip default-gateway [ENTER]
```

```
[ec-v-appliance] # ping <default-gateway> [ENTER]
```

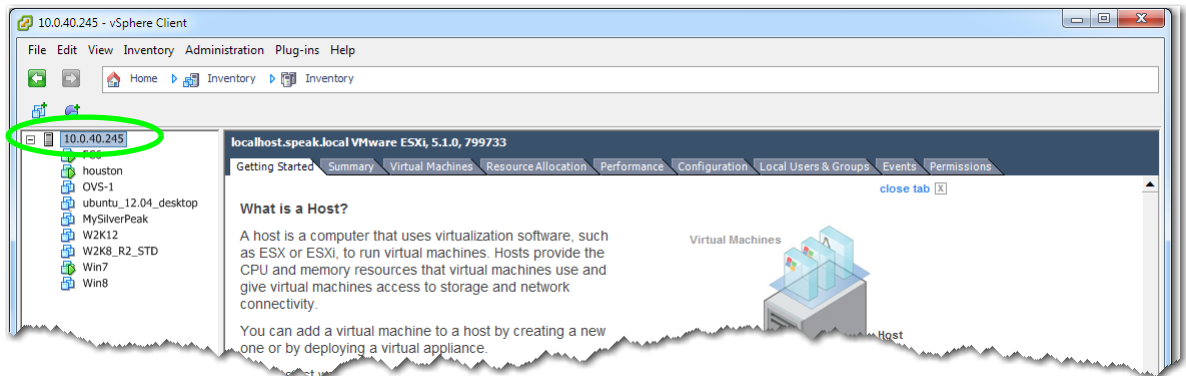
To stop the pinging, enter **CTRL-C**.

- e. In the console, enter **reboot halt**, which powers down the virtual machine.
-

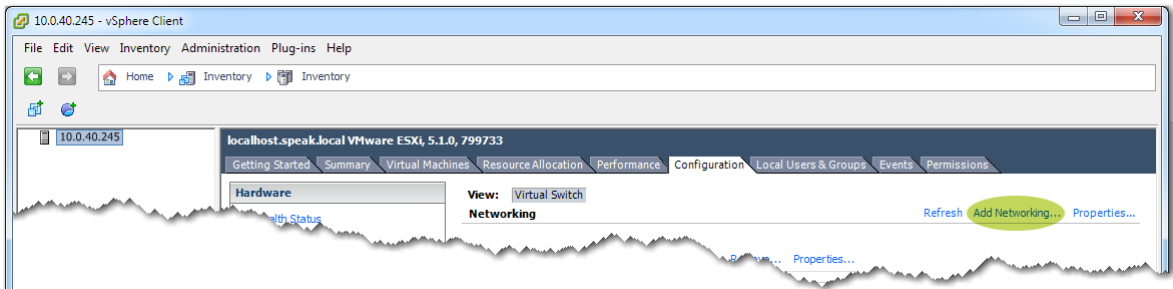
3 Add LAN and WAN interfaces

Now, you'll create an additional network and network adapter that you'll pair with **wan0** (for data traffic).

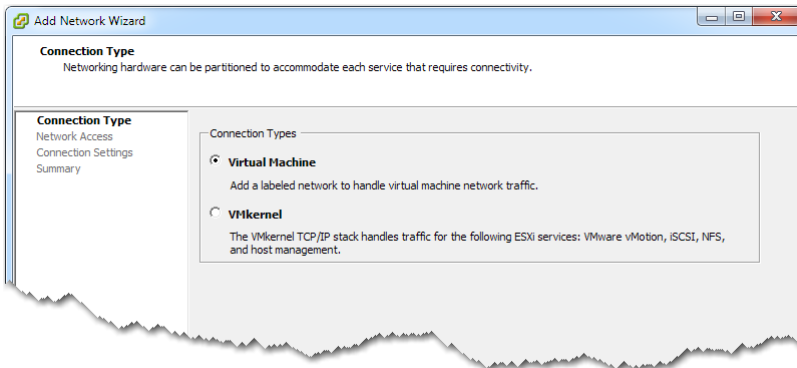
- a. In the vSphere client, select the host.



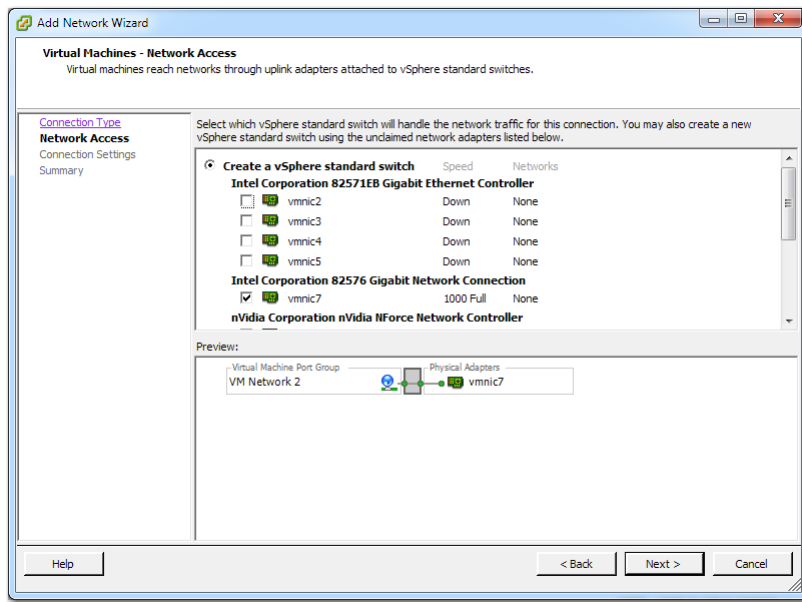
- b. Select the **Configuration** tab, and click **Add Networking**.



The Connection Type page appears. Make sure that **Virtual Machine** is selected.

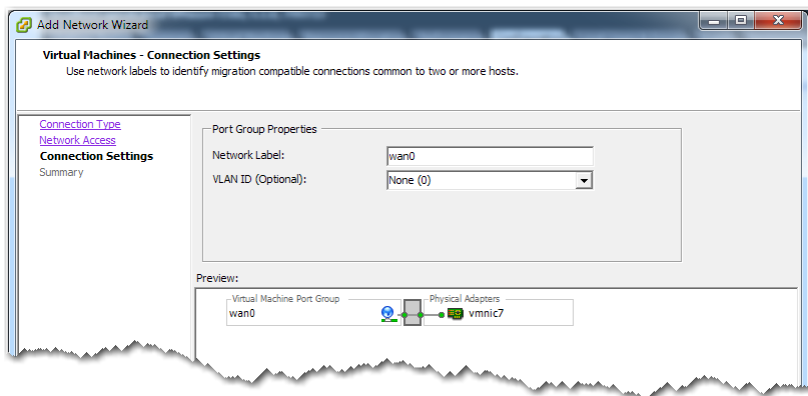


- c. Click **Next**. The Virtual Machines - Network Access page appears.

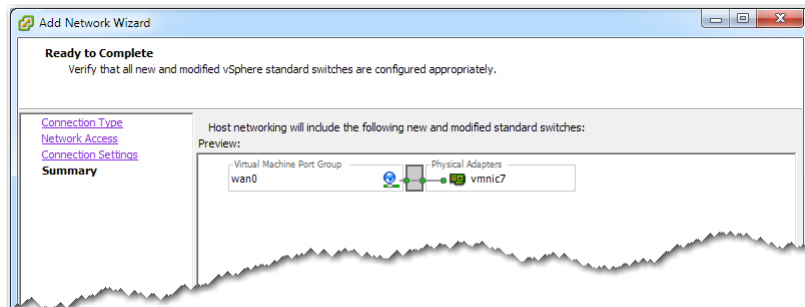


In this example, we select **vmnic7**, and click **Next**. Based on your own server configuration, select an appropriate interface to pair with **wan0**. The Virtual Machines - Connection Settings page appears.

- d. In the **Network Label** field, enter **wan0** and click **Next**.

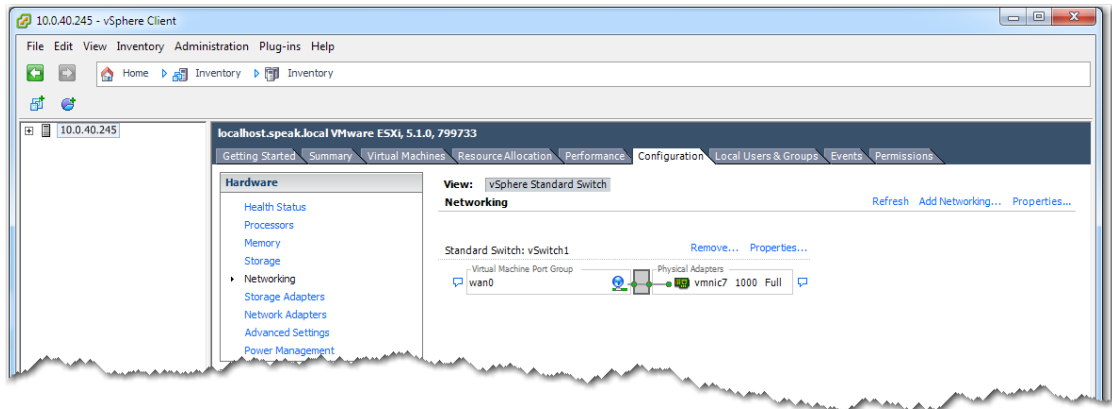


The Ready to Complete page appears.



- e Click **Finish**.

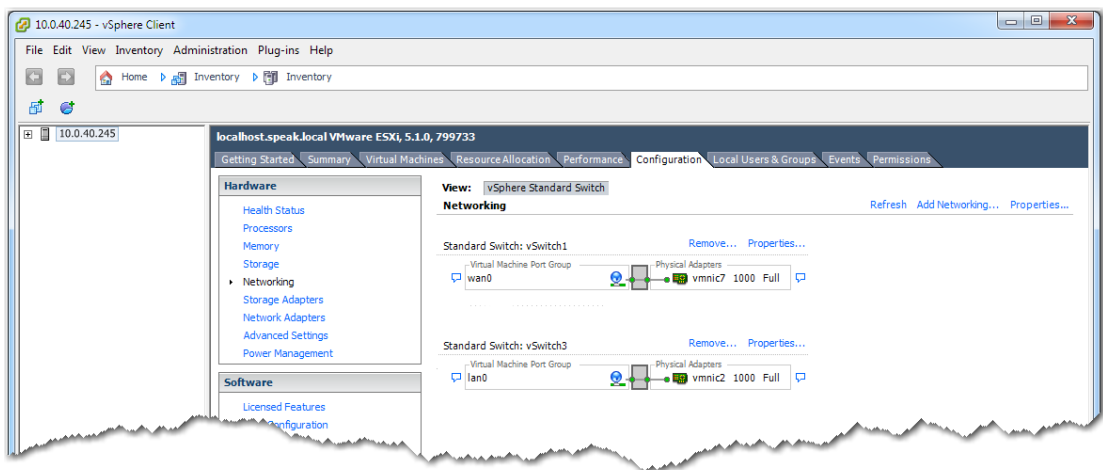
The vSphere Client's **Configuration** tab now reflects the addition of **wan0**.



Optionally, if you want to add a **wan1** interface, repeat Steps 3b through 3e, entering **wan1** in the **Network Label** field.

- f. Now, you need to add **lan0**, using the same procedure as you did in Steps 3b through 3e. A summary of the sequence follows, with entries adjusted for **lan0**:

- In the vSphere Client's **Configuration** tab, click **Add Networking**. The Connection Type page appears. Make sure that **Virtual Machine** is selected.
- Click **Next**. When the Virtual Machines - Network Access page appears, select an available network adapter. (This time, we select **vmnic2**.)
- Click **Next**. The Virtual Machines - Connection page appears.
- In the **Network Label** field, enter **lan0** and click **Next**. The Ready to Complete page appears.
- Click **Finish**. The vSphere Client's **Configuration** tab now reflect the additions of **wan0** and **lan0**.



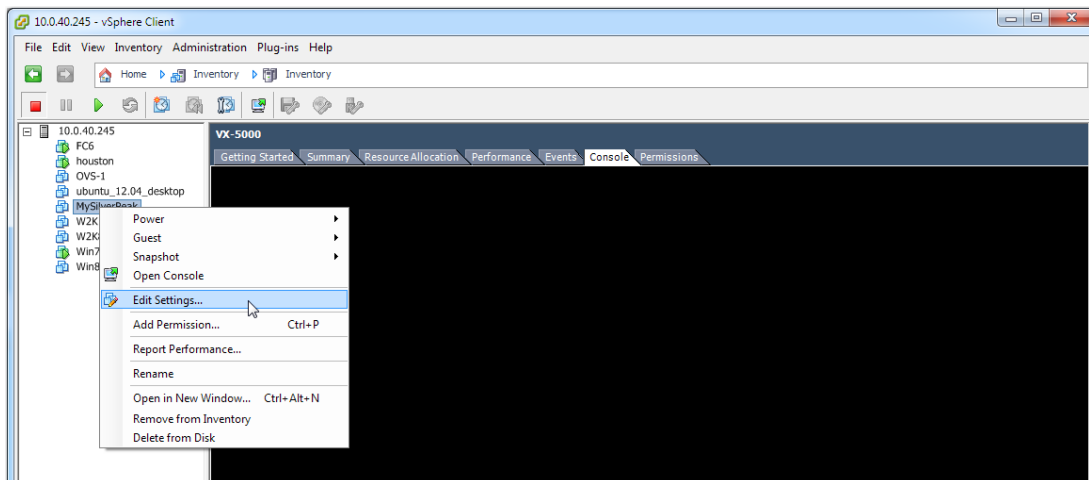
Optionally, if you want to add a **lan1** interface, repeat this summarized step, entering **lan1** in the **Network Label** field.

- g Verify that the virtual appliance is powered down (you did this in Step 2e).

Now you need to add virtual network adapters for your LAN and WAN interfaces.

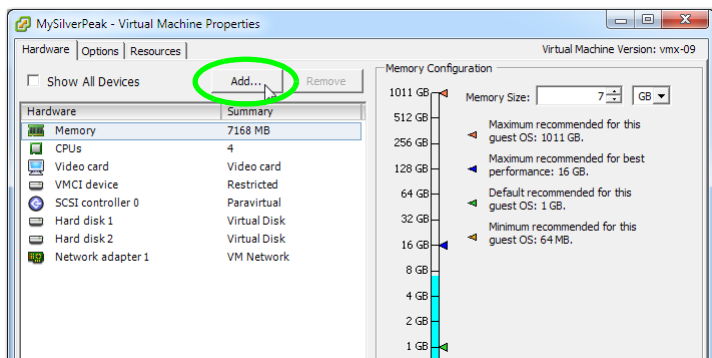
First, we'll show the steps for adding one for **wan0**.

- h. In the navigation pane, expand the server; right-click **MySilverPeak**, and select **Edit Settings**.

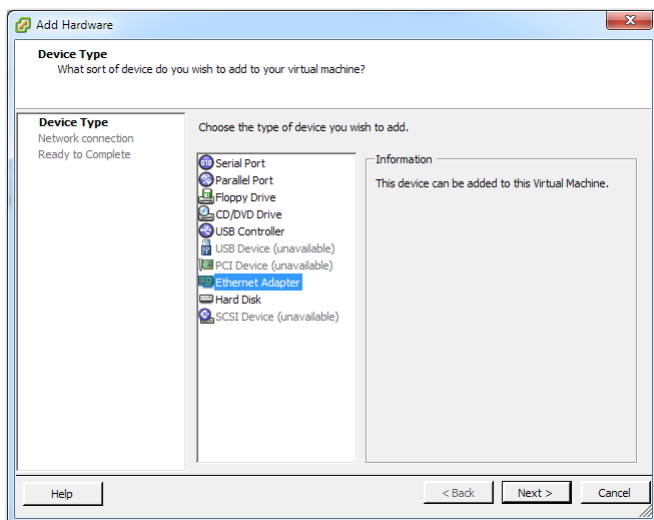


The Virtual Machine Properties page appears.

- i. Click **Add**.

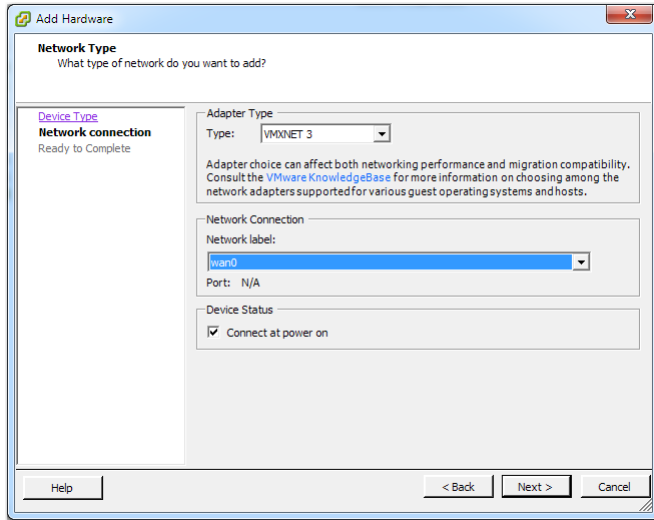


- j. When the Device Type page appears, select **Ethernet Adapter**.



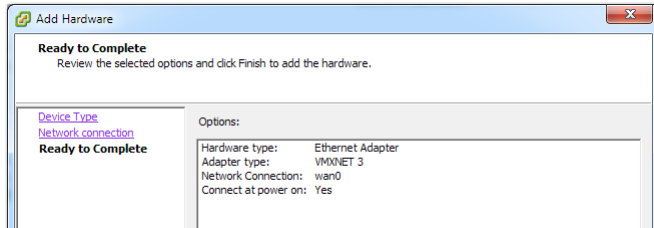
The Network Type page appears.

k. Select the following:

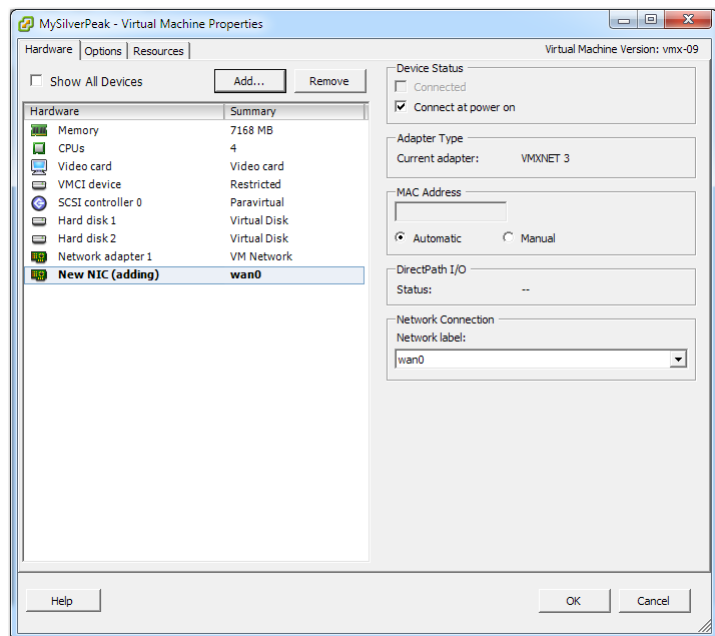


Type: VMXNET 3
Network label: wan0
Device Status: Connect at power on

l. Click **Next**. The Ready to Complete page summarizes your selections.



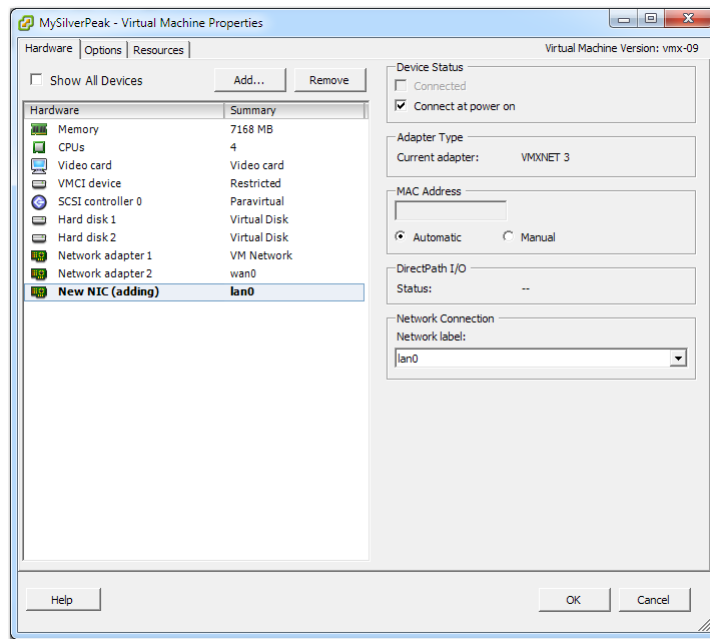
- m Click **Finish**. The Virtual Machine Properties page shows the NIC being added.



Click **OK**. The client returns to the Silver Peak appliance's **Console** tab.

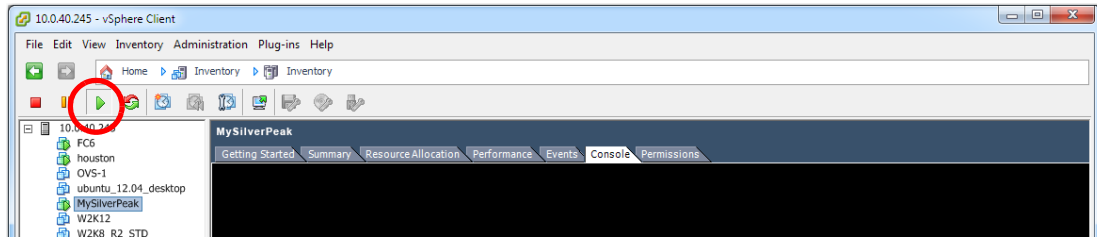
If you have a **wan1** interface, repeat Steps 3h through 3m, entering **wan1** in the **Network Label** field. .

- n To add a virtual network adapter for **lan0**, repeat the same procedure as you did in Steps 3h through 3m:
 - In the navigation pane, expand the server; right-click **MySilverPeak**, and select **Edit Settings**. The Virtual Machine Properties page appears.
 - Click **Add**. When the Device Type page appears, select **Ethernet Adapter**. The Network Type page appears.
 - Select the following:
 - Type:** **VMXNET 3**
 - Network label:** **lan0**
 - Device Status:** **Connect at power on**
 - Click **Next**. The Ready to Complete page summarizes your selections.
 - Click **Finish**. The Virtual Machine Properties page shows the NIC being added for **lan0**.

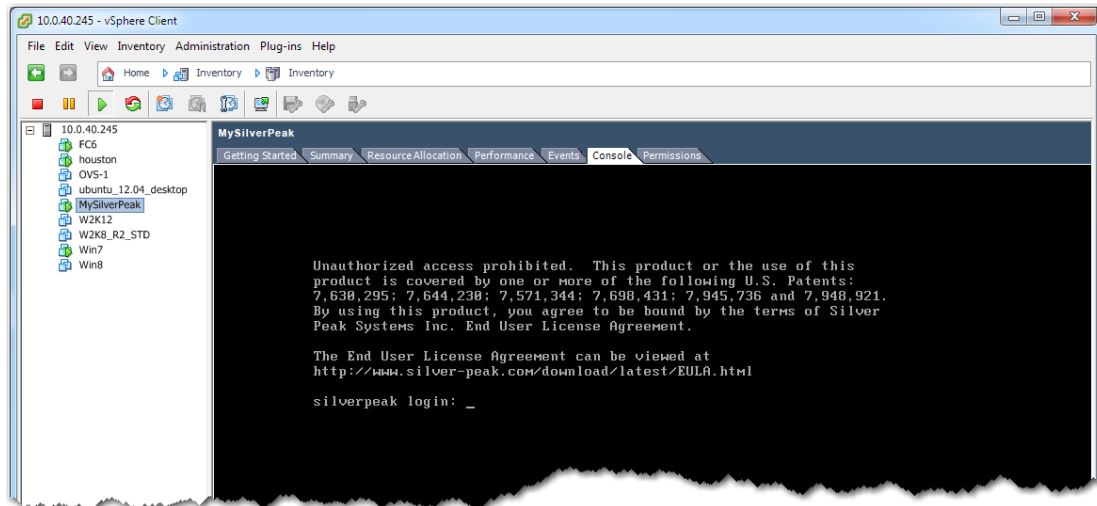


If you have a **lan1** interface, repeat this step, entering **lan1** in the **Network Label** field.

- o In the vSphere Client, select the newly deployed virtual appliance and click  to power it on.



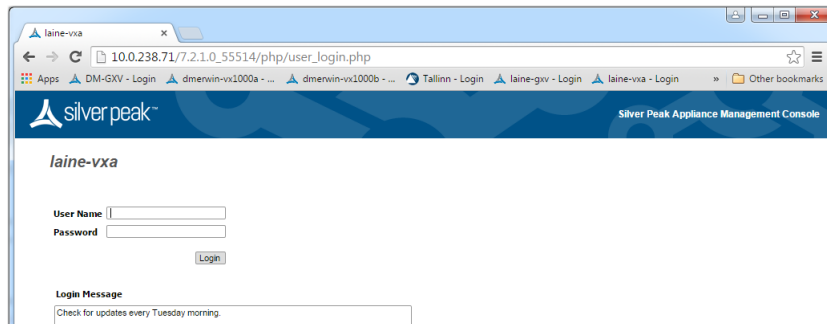
The virtual machine powers up, arriving at the silverpeak login.



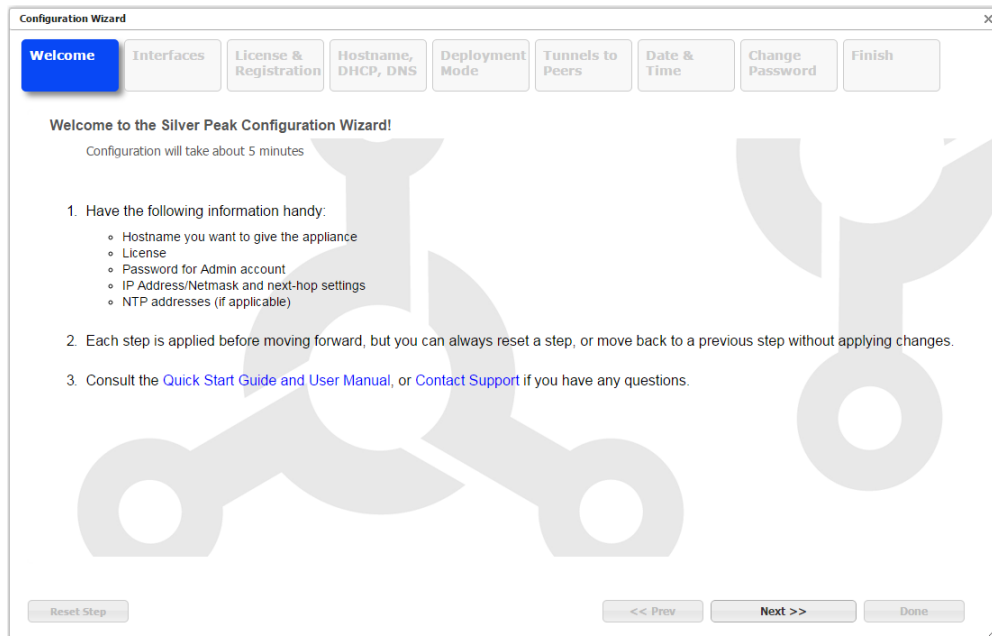
You are now ready to complete the Silver Peak virtual appliance initial configuration wizard.

4 Complete the Appliance Manager initial configuration wizard

- a. In a browser, enter the IP address that you just discovered or configured. The Silver Peak Appliance Management Console login page appears.



- b. For both the **User Name** and **Password**, enter **admin**. The initial configuration wizard appears.



Click **Next**.

- c. On the **Interfaces** screen, you'll need to select the MAC addresses for **wan** and **lan** interfaces from the drop-down lists. To find the MAC address, do the following:
1. In the vSphere Client's navigation pane, select your appliance from the inventory.
 2. Right-click and select **Edit Settings**.
 3. Select **wan0**'s network adapter. You'll see it's MAC address in the right pane.
- Follow the same steps to find **lan0**'s MAC address, and optionally, the others.
- d. On the License & Registration page, enter the **Account Name** and **Account Key** you received from Silver Peak.
- e. Complete the remaining wizard screens.
- For **Deployment Mode**, be sure to select **Router** mode and assign both a WAN interface and a LAN interface.

5 Register the appliance with the Orchestrator

After completing that screen:

- Go to the Orchestrator that will be managing this appliance.
- Access the **Orchestrator Administration > Discovered Appliances** page.
- Find this appliance in the listing and **Accept** it.

You are now ready to start using the appliance.
