

QUIK SPRAY[®]

REMOTE CONTROL RETRACTABLE HOSE REEL SYSTEMS

QUALITY • PERFORMANCE • RELIABILITY • SERVICE

INSTRUCTION MANUAL

QUIK SPRAY QR UTV SYSTEM

12VOLT • 200L + 400L



T 07 5493 8944
F 07 5493 8957

info@quikcorp.com.au
www.quikspray.com.au

37 Production Avenue
Warana, QLD 4575



KEY FEATURES



BERTOLINI PUMPS

20 years of partnership with Bertolini Pumps has allowed us to use of the highest quality pumps on the market. This guarantees optimum performance from your spray unit, first time, every time.



POWERED BY HONDA

Every engine that sports the 'Green and Gold Approved' Honda symbol has been "matched" specifically to its product to make sure it's the right Honda engine for the job. The Honda motors pack a punch and are designed to work hard from day one, so we've made sure it's the right Honda engine for each Quik Spray model.



REMOTE CONTROLLED TRANSMITTERS

Our Quik Spray units are radio controlled by a hand-held transmitter. Our advanced radio technology gives you superior, independent radio range, without interference between operators. Over 30 years in the business means we have weeded out the inferior technologies used by others. Beware of out-dated technology. Comes with 5-year full comprehensive warranty on the RCM module (radio transmitters and radio control box).



SUPA-SLIP HOSE

Quik Spray's own Supa-Slip® Hose is a high grade Nylon which is a polyamide bio plastic derived from vegetable oil which offers advanced performance and strength as opposed to the lower grade of Nylons commonly used.

The Quik Spray hose has higher operating pressures and tensile strength. It is also more resistant to cold and hot extremes. The additives in the hose mean it is less likely to kink or stretch giving it a longer life cycle.

IMPORTANT



WARNING

READ THIS INSTRUCTION MANUAL CAREFULLY BEFORE ATTEMPTING TO OPERATE THIS UNIT

No part of this manual may be reproduced without written permission from QUIK CORP PTY LTD. All information contained in this manual is based on the latest product information available at the time of printing.

This manual should be considered a permanent part of your Quik Spray spraying system and should remain with it at all times for technical reference. Information given in this manual will provide the operator with the safest and most effective use of this machine. The machine shown in this manual may differ slightly from your machine, but should be similar enough to help you understand our instructions.



WARNING

Not maintaining this unit or failing to correct a problem before operating could cause a malfunction in which serious damage to the unit or serious personal injury could occur.

Always perform a pre-operation inspection before each operation and to identify and correct any problems.

WELCOME TO QUIK SPRAY

On behalf of the Quik Spray team, we would like to thank you for investing in a quality Quik Spray product. Our units are manufactured to the highest standard of quality, with every individual unit hand-assembled to guarantee our customers the best product and service possible. As an Australian owned business your investment has enabled our every success.

As a division of Quik Corp, our team have provided over three decades of high-quality agricultural products to the Australian market. From our humble beginnings in 1988, our product range has continually expanded and our innovation sparks from the passion and commitment we have for the agricultural industry.

Producing the world's first remote controlled retractable hose reel system in 1988, Quik Spray is the preferred choice of spray units for farmers, councils, contractors and nurseries.

With innovation, valuable expertise and the most dedicated service, we produce superior equipment suited to the harsh Australian environment. After 30 years, we know what it takes to make the most trusted sprayer on the market.

All Quik Spray units are fabricated and hand-assembled right here in Warana, Queensland. We control all aspects of the fabrication and assembly process, ensuring you get the highest quality product. We are extremely proud and dedicated to providing jobs to local employees in the local manufacturing sector.

TABLE OF CONTENTS

05	Pre-operation checklist & safety warnings
06	Unpacking your unit
07	Product range overview - QR400 system
09	Product range overview - QR reel
11	Mounting instructions
12	Connecting power supply
13	Radio transmitter & receiver
15	Operation instructions
19	Trouble shooting
21	Machine specifications
23	Parts diagrams
27	Warranty



WARNING

PLEASE FOLLOW ALL WARNINGS AS FAILURE TO DO SO MAY RESULT IN SERIOUS INJURY, PERMANENT INJURY OR DEATH

1. DO NOT start the unit until you have read this manual carefully.
2. DO NOT let any person near the unit while it is operating.
3. DO NOT start motor with pressure lever in the “press position”
4. DO NOT pull the hose out too fast as the reel may run on, causing the hose to become entangled.
5. DO NOT alter the equipment in any manner. If repairs are necessary use only genuine factory repair parts.
6. DO NOT leave the unit running unattended at any time.
7. DO NOT operate the unit if there are any leaks from hoses, fittings ect. Fluids which are under high pressure can penetrate the skin.
8. DO NOT operate near power lines, as contact could result in electrocution.
9. DO NOT refuel the engine until it has stopped and, if any fuel is spilled, make sure the area is dry before starting the engine.



WARNING

The QR400 units have been designed to meet the operational requirements of a variety of customer applications, including fixed ground mounted positioning and vehicle mounted operations.

VEHICLE MOUNTED OPERATIONS:

The QR400 has been designed to fit within the “tub” of most motor vehicle “dual-cab” 2x4 and 4x4 vehicles and many UTV’s currently available.

In every instance the maximum weight of the QR400 and the amount of water put into the tank must be considered for ALL vehicle mounted operations.

Factors to consider when using the QR400 in vehicle mounted operations should include, but are not limited to:

1. The maximum cargo carrying capacity of the vehicle.
2. The type of terrain the vehicle is to be operated on – particularly slope, surface slip and potential bogging.
3. The experience of the operator in relevant vehicle operating terrain.

The amount of water put into the tank of the QR400 should take into account at least the above factors.

- Never exceed the vehicle manufacturers recommended maximum load.
- Never operate the vehicle where operational conditions are considered hazardous.
- Never allow inexperienced operators to operate the vehicle.

The QR400 will operate according to specification regardless of the amount of water in the tank – which is determined by the factors previously stated.

UNPACKING YOUR UNIT

When unpacking your new Quik Spray unit, please check it thoroughly for any transport damage that may have occurred during transit. Check that all parts and accessories that were ordered, have been included.

- ☞ Aerial/s
- ☞ Transmitter/s
- ☞ All accessories as ordered

PRE-OPERATION CHECKLIST

Prior to operating your spray system, please read the following instructions carefully.

1. Check all spray guns are connected and water tight.
2. Ensure the water tank is filled.
3. Ensure there is fuel in the motor (unleaded).
4. Ensure the correct oil level in pump (pump manual).
5. Ensure the correct oil level in motor (motor manual).
6. Ensure the controller 2-way ball valves in the off position.
7. Ensure the pressure lever is in bypass position.
8. Ensure all safety guards and shields are in place.
9. Ensure all nuts, bolts, and screws are in place and tight.
10. Ensure the radio on/off switch in the off position.
11. Make sure that the unit is in an open space (exhaust gas is poisonous).
12. All maintenance schedules have been completed.
13. Start engine (see engine manual).
14. Adjust engine revs to approximately 2400 rpm or $\frac{3}{4}$ revs.

FIT AERIALS TO MOUNTING BASES



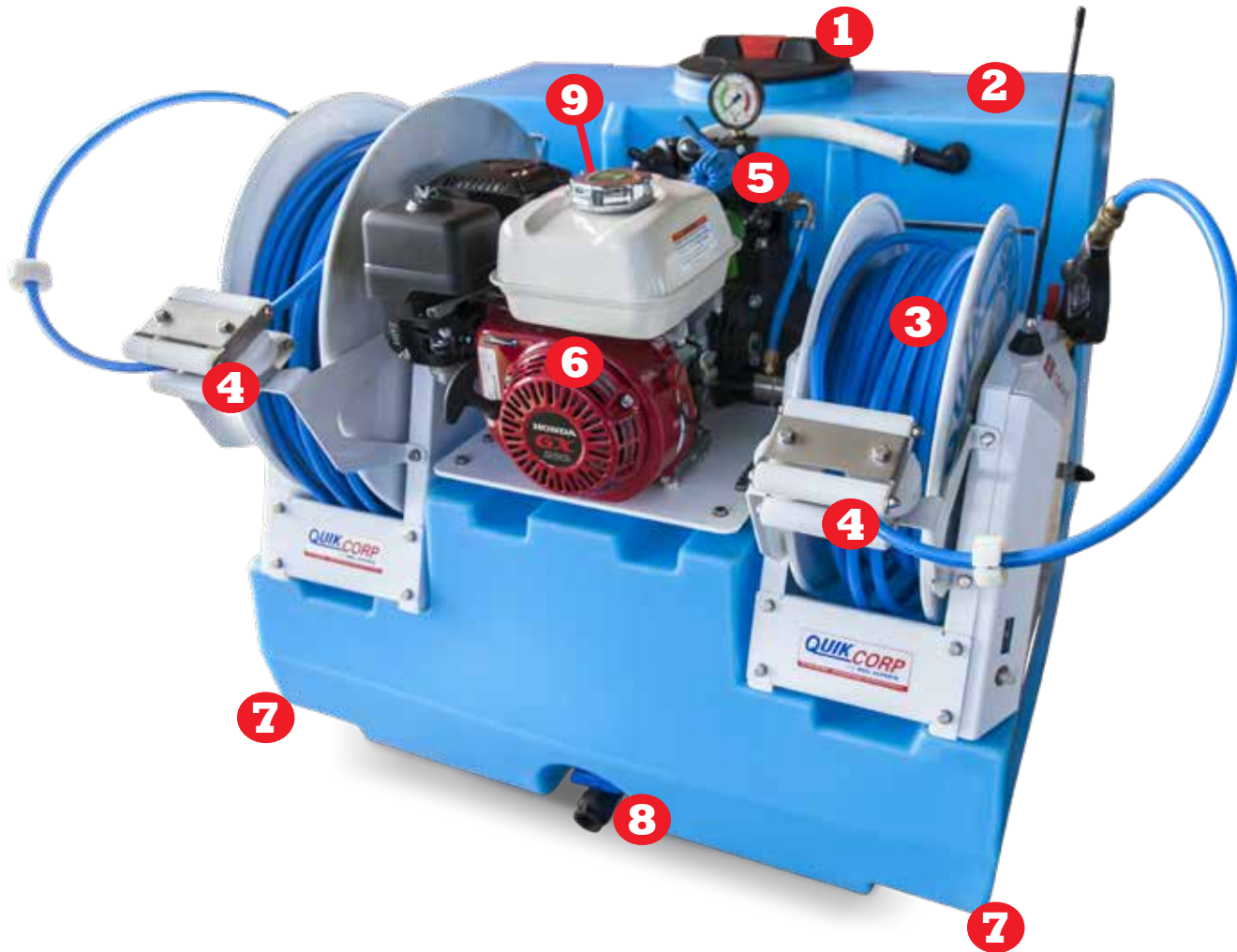
WARNING

DO NOT OVER-TIGHTEN THE AERIAL TO THE AERIAL BASE

Finger tighten and a tiny bit more, is all that the aerials require to be attached properly. Overtightening the aerials can cause the coax cable to break in the solder cap of the aerial base severing the connection to the aerial. This can result in a radio range of only 20-40 meters rendering the aerial/s incapable of receiving a signal.

PRODUCT RANGE OVERVIEW

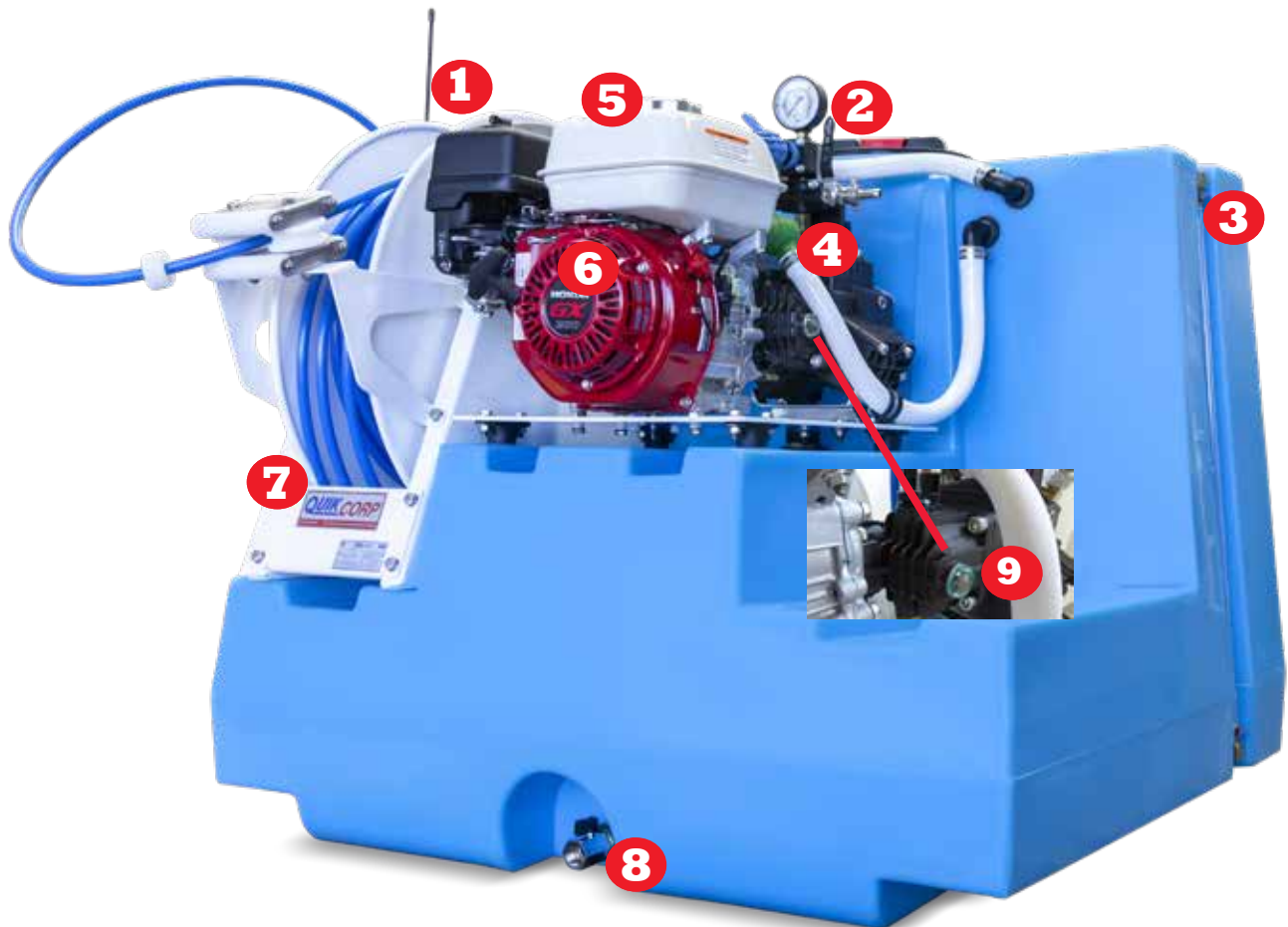
TWIN REEL SYSTEM - MODEL QR400



QR400 Description

- | | |
|------------------------------|--------------------------|
| 1. Tank lid fill inlet | 6. Honda motor |
| 2. UV stabilised tank | 7. Forklift tyne pockets |
| 3. Supa-Slip® hose | 8. Tank drain |
| 4. Hose roller guides | 9. Pump filter |
| 5. Karin pressure controller | |

SINGLE REEL SYSTEM - MODEL QR400



QR400 Description

- | | |
|----------------------------------|----------------------------|
| 1. Aerial for remote retraction | 6. Honda motor |
| 2. Karin pressure controller | 7. QR50/QR100 12 volt reel |
| 3. Tank level sight gauge | 8. Tank drain |
| 4. Safety valve return line | 9. Gearbox oil sight glass |
| 5. Honda motor petrol fill point | |

PRODUCT RANGE OVERVIEW

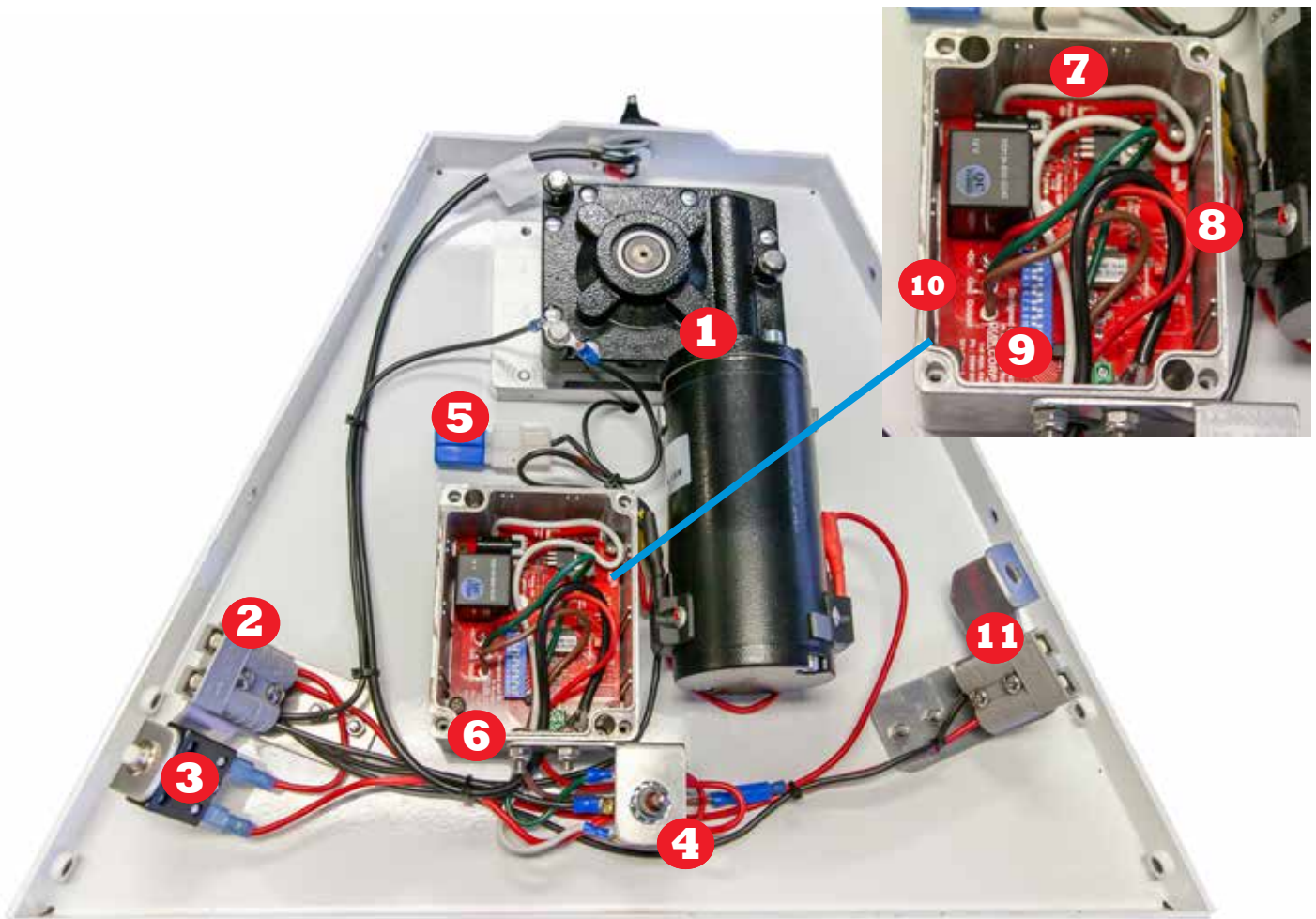
QR50 | QR100



QR50 Reel Description

1. T-400 spray gun (additional accessory)
2. 915 MHz antenna aerial
3. 3/8" ID Supa-Slip® hose (50 or 100m options)
4. Hose roller head guide
5. Aerial base
6. Nozzle holder
7. 50A Anderson plug connection - Additional Outlet
8. Resettable circuit breaker
9. ON/OFF power switch for radio receiver and manual operation
10. 50A Anderson plug connection - Input for 12V power supply

QR50 | QR100



QR50 Reel Interior Description

1. 12V Motor
2. 50A Anderson plug connection. Additional outlet
3. Resettable circuit breaker 30amp
4. Operation switch momentary on/off
5. Feedback suppression diode
6. 915MHz radio receiver
7. Main receiver board power light
8. 915MHz receiver board function power light
9. Radio receiver dip-switch code (This must match the radio transmitter)
10. Full integrated 915 MHz receiver board with relay and pre-regulator board
11. 50A Anderson plug connection - Input for 12V power supply

MOUNTING YOUR SPRAY UNIT TO YOUR VEHICLE

To mount your QR400 securely, attach the bolt down brackets to the tank using bolts and washers supplied with your unit.

FIGURE 1

At the base of the tank, you will find brass threaded inserts so you can attach the mounting plate. Measure the holes where you need to drill into the vehicle tray.



FIGURE 2

NOTE: Washers must be fitted between the bracket and tank as per this example, when fitting the bracket to the tank.



FIGURE 3

Attach hold down brackets to the tank using the bolts and washers supplied. Fit securely to tank and vehicle tray.



FILTER HOUSING

1. Filter housing and removal nut. The filter housing is located behind the Honda motor. To clean filter with water in the tank, turn valve OFF before loosening filter nut. Ensure O-ring is seated properly before tightening nut.



CONNECTING POWER SUPPLY FROM YOUR VEHICLE

To connect your sprayer to a power source, you will need to connect the power supply to your vehicle battery. Connecting the Anderson Plug from your battery supply to the Anderson plug on the Hose Reel as shown here will vary, depending on whether you have a single or twin reel unit and electric or manual start motor.



MANUAL START

Single Hose Reel

1. Insert a 50 amp Anderson Plug from the 12v battery into the Power Supply Anderson Plug on the front of the QR50/QR100 Hose Reel.

Twin Hose Reels

1. Insert a 50 amp Anderson Plug from the 12v battery into the Power Supply Anderson Plug on the front of the QR50/QR100 Hose Reel.
2. Insert a 50 amp Anderson Plug from the Primary Hose Reel to the Secondary Hose Reel Additional Outlets on the rear of the QR50/QR100 Hose Reels. ONLY REQUIRED IF UPGRADING FROM A SINGLE HOSE REEL. IF ORDERED AS A TWIN HOSE REEL THIS CONNECTION HAS ALREADY BEEN INSTALLED.

ELECTRIC START

Single Hose Reel with Electric Start

1. Insert a 50 amp Anderson Plug from the 12v battery into the Power Supply Anderson Plug on the front of the QR50/QR100 Hose Reel.
2. Insert a 50 amp Anderson Plug from the Electric Starter on the Motor into the Additional Outlet on the rear of the QR50/QR100 Hose Reel.

Twin Hose Reels with Electric Start

1. Insert a 50 amp Anderson Plug from the 12v battery into the Power Supply Anderson Plug on the front of the QR50/QR100 Hose Reel.
2. Insert a 50 amp Anderson Plug from the Primary Hose Reel to the Secondary Hose Reel on the rear of the QR50/QR100 Hose Reel. ONLY REQUIRED IF UPGRADING FROM A SINGLE HOSE REEL. IF ORDERED AS A TWIN HOSE REEL THIS CONNECTION HAS ALREADY BEEN INSTALLED.
3. Insert a 50 amp Anderson Plug from the Electric Starter on the Motor into the Power Supply Anderson Plug on the front of the QR50/QR100 Hose Reel.

TUNING 915 MHZ TRANSMITTER TO RECEIVER

915 MHz

Your 12 volt reel is delivered pre-tuned from the factory. If at some point you need a new radio transmitter or receiver board you will need to follow these instructions to re-tune your system:

1. In the labelled photo description, there is a set of two dip-switch codes (blue panel with small white switches). There is one set on the receiver and one set on the transmitter. These codes can be moved to either the UP or DOWN position.
2. Make sure that both the radio receiver dip-switch code and the radio transmitter dip-switch codes match exactly to each other. This will enable the remote control to communicate with the receiver box, controlling the retraction of your reel.
3. When changing the 9 Volt battery in your radio transmitter make sure not to bump any of the dip-switch codes. This would render your remote control feature unusable until the dip-switch code was put back into its original position.
4. If two or more 915 MHz systems are in use in the near vicinity make sure that the dip-switch codes from one system to the other are different. If they are too close in dip-switch combination radio interference or cancellation can occur from one unit to another.




CAUTION

The working range of Quik Corp Radio transmitters can be affected by the many factors that typically affect all 915 MHz and 433 MHz radio Transmissions. These include operating in the vicinity of high tension power lines, buildings and other obstructions. Interference can also come from other radio transmitters, and certain atmospheric conditions.

A range of 100 meters or more can be achieved under ideal conditions.

RADIO TRANSMITTER

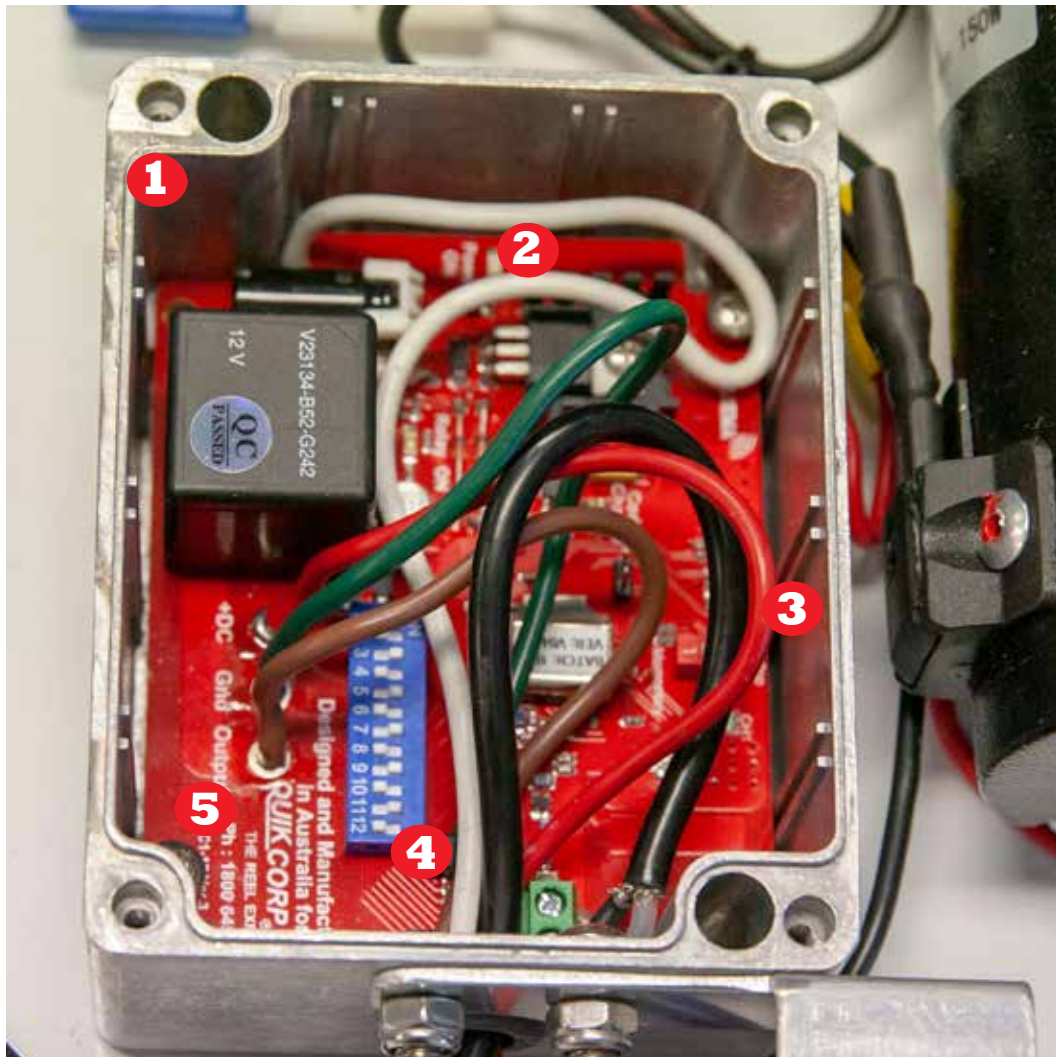
1. Radio transmitter.

 Always use a high quality 9 volt battery to power your radio transmitter. Replace the 9 volt battery at least every 3 months (or more frequently with continual use).

 As the battery voltage reduces, the radio range effectiveness will reduce accordingly.



915 MHz RADIO RECEIVER & TRANSMITTER



Radio Receiver Enclosure

1. 915MHz radio receiver
2. Main receiver board power light
3. 915MHz receiver board function power light
4. Radio receiver dip-switch code (This must match the radio transmitter)
5. Full integrated 915 MHz receiver board with relay and pre-regulator board

OPERATION INSTRUCTIONS

TURNING ON UNIT - MANUAL AND OPTIONAL ELECTRIC START

1. Ensure pre-operation checklist has been completed.
2. Turn motor ON (3).
3. Turn FUEL to the ON position.
4. Turn CHOKE ON (1).
5. Adjust the THROTTLE to help the engine start (2).
6. Pull start cord (4) OR if fitted, use the electric start by turning the key to the start position (5).
7. Once engine is running, close CHOKE.
8. Adjust revs on the THROTTLE (Rabbit vs. Turtle icon) to set the desired revs on the motor. 2400 RPM is ideal.

MANUAL START



ELECTRIC START



DANGER - HOT SURFACE

Honda motor exhaust will become hot when in use.



CAUTION

Always run the Honda motor at 2400RPM or 3/4 revs. This is optimal revolutions per minute for the pump and 1 amp charging coil to recharge the 12volt battery.

OPERATION INSTRUCTIONS

SET PRESSURE & SPRAY

! When your unit arrives from the factory, the pressure controller is set at BYPASS. The pressure handle will be OUT. To increase the pressure, you will need to wind the handle IN.

10. With the motor running, switch the controller lever to PRESS (PRESSURE). (Picture shown in BYPASS position)
11. Adjust the handle to set the desired pressure you want to spray with.
CLOCKWISE = To build pressure ANTI-CLOCKWISE = To reduce pressure (Refer indicators on handle)
12. To direct spray/liquid to the reel/s or fire reel, open the 2-way ball valve/s (Pictured in CLOSED positions).
13. Squeeze the trigger on the spray guns to spray.
14. To close down your spray unit, repeat the above steps in reverse order.



QUIK TIP

To extend the life of your pressure controller, we recommend releasing the pressure from your spray unit at the end of operation. This can be done by reducing your pressure controller handle down to ZERO, and then adjusting the handle to BYPASS. To release the pressure in the unit, CLOSE the ball valve/s to the reel and squeeze the guns to run out any pressure and liquid from the hoses.

OPERATION INSTRUCTIONS

TURNING ON TRANSMITTER

1. Turn radio ON/OFF power switch to the ON position. Assign each operator with a transmitter. If you are using a twin reel system, be sure that each operator is carrying the correct transmitter to their corresponding reel.
2. Quik Spray reels will free-wheel out to the desired distance.
3. When the operator is ready to retract the hose, press the button on the transmitter to retract the hose back onto the unit reel.

! Do not pull the hose out too fast. This may cause the reel to 'run-on' and become tangled.

! Be aware of strong retraction! Be prepared to release the transmitter button when approaching the reel/s as personal injury or damage to the unit may occur.

4. When operation is complete, turn radio switch to OFF position to prevent the 12 volt battery from discharging.
5. It is recommended that the 12 volt battery be connected to an automatic battery charger when not in use. This will help avoid any damage to the 12 volt battery and help keep the unit working at peak performance.

USING THE TRANSMITTER TO RETRACT HOSE

Ensure all set-up instructions are complete.

When you are ready to operate the reel, turn the radio switch ON and carry the transmitter with the operator.

The reel will free-wheel out to the desired distance.



CAUTION

Do not pull hose out too fast, as the reel may "run on", causing the hose to become entangled. When you are ready to retract the hose, press and hold the transmitter button to retract the hose back to the unit.



CAUTION

Always ensure the hose is in front of the operator. To operate the transmitter for retraction, the operator must be at least 2-3 meters away from the unit.

USING THE MANUAL BUTTON TO RETRACT HOSE

For manual retraction of the reel, use the manual switch.

This unit has been designed to operate in a continuous start/stop mode without damage to the unit. Keep tension on the hose when rewinding to enable the hose to slip into the low spot on the reel drum.



CAUTION

Be ready to release the radio transmitter button when approaching the reel, as injury may result.



CAUTION

Use the manual button on the radio receiver box to retract any slack hose within 2 meters of the unit.

TO FLUSH YOUR QUIK SPRAY

1. After use, flush your unit with Quik Flush Tank/Pump Cleaner according to the directions on the bottle. This will ensure your unit is cleaned and lubricated to extend the life of the tank, pump, hoses, diaphragms, o-rings and seals.
2. Rinse tank with clean water through the guns until foaming reduces.

For more information on our range of accessories, please call our friendly sales team on **1800 645 688** or visit our website at **www.quikspray.com.au/shop**



For winter storage, if freezing conditions are expected, empty pump completely and flush with a mixture of water and anti-freeze to prevent irreparable damage to your unit.

TROUBLE SHOOTING

PUMPS AND PRESSURE CONTROLLER

PROBLEM	PROBABLE CAUSE	REMEDY
Pump does not deliver pressure	If good flow is being achieved from bypass back to the tank	
	Sting pressure regulator not set for pressure	Set the lever to PRESS and adjust the handle
	Damaged or worn seat or spring in pressure regulator	Replace with sting repair kit of new spring
	Sticking pressure regulator slide	Remove slid and lubricate with marine grease
	Spray nozzle/s worn, missing, or exceeding pump capacity	Replace spray nozzle/s with correct size
	If irregular flow from by-pass to tank	
	One of more of the pump valves not seating	Clean or replace valves
	Sucking air though the suction line, suction fittings or filter	Examine and repair
	Air has not been entirely evacuated from the pump	Run pump in the BYPASS mode until all air is evacuated
	Blocked suction filter or ball valve closed	Clean filter or open ball valve
	Motor to pump drive belts loose/broken or direct coupling damaged	Tension belts or replace. Replace direct coupling sprockets and chain
	Ruptured spray hoses or fittings	Repair or replace
	Pump delivers insufficient pressure	If hoses are jumping
One or more of the pump valves not seating properly		Clean or replace valves
Diaphragm split (Oil will go milky in colour)		STOP PUMP! Replace all 3. See pump manual
Air has not been entirely evacuated from the pump		Run pump with lever in BYPASS position until all air has been evacuated
Sucking air through the suction line or filter		Examine and repair
	Oil lever is low	Top up with ASE30 or 10W30

TROUBLE SHOOTING

PUMPS AND PRESSURE CONTROLLER contd.

Pump delivers insufficient pressure	If hoses are not jumping	
	Damaged or worn seat or spring in the pressure regulator	Replace
	Sticking pressure regulator slide	Remove slide and lubricate with marine grease
	Spray nozzle/s worn, missing or exceeding the pump capacity	Replace nozzle/s with correct size
	Motor to pump drive belts loose/broken or direct coupling damaged	Tension belts or replace. Replace direct coupling sprockets and chain
	Leaking hoses or fittings	Repair or replace
Pump is noisy	Oil level is low	Top up with SAE30 or 10W30
	Sucking air or air in the pump	Examine and repair
	Blocked filter	Clean filter
Oil is changing colour to white or oil is in the spray hose	One or more diaphragms are split	STOP PUMP! Replace all 3. See pump manual
Water returning to tank through the safety valve hose	Worn safety valve (pressure adjusted too high)	Replace safety valve
T400 gun leaking	Worn seat or seal in the handle	Replace with T400 repair kit

MACHINE SPECIFICATIONS

	QR400
Reels	1 or 2
Horsepower	6.5
Honda Motor	GX200
Bertolini Pump	PA430
Litres p/min (max)	40
PSI (max)	580
PSI (max working)	400
Electric Start	Optional
12 Volt battery	No
Flow at 100m 100PSI	9.3 litres per minute
Flow at 100m 200 PSI	12.1 litres per minute
Flow at 100m 250 PSI	14.2 litres per minute
Flow at 100 m 300 PSI	15.5 litres per minute
Flow at 100m 400 PSI	18.2 litres per minute
Weight* (No reels)	80 kg
Length*	900 mm
Width*	1050 mm
Width including brackets	1170 mm
Height*	920 mm
Colour	Blue
Remote control MHz	915MHz

OPTIONAL QUIK SPRAY ACCESSORIES

There are a variety of accessories you can add to your Quik Spray unit.

- Aerial springs
- T400 spray gun
- Quik Flush pump and tank wash concentrate
- Projecta 12 volt automatic battery charger 1600mA



For more information on our range of accessories, please call our friendly sales team on **1800 645 688** or visit our website at www.quikspray.com.au/shop

MAINTENANCE

DAILY

1. Clean inline filter.
2. Check oil level in pump.
3. Check oil level in engine.
4. Check all hoses and fittings for leaks.

20 HOURS

1. Check water in the 12 volt battery (if fitted).
2. Recharge 12 volt battery if necessary.
3. Replace 9 volt battery in transmitter/s if radio range has decreased.
4. Check aerials and bases.
5. Wash off any salt.
6. Flush unit with Quik Flush according to directions on bottle.

YEARLY

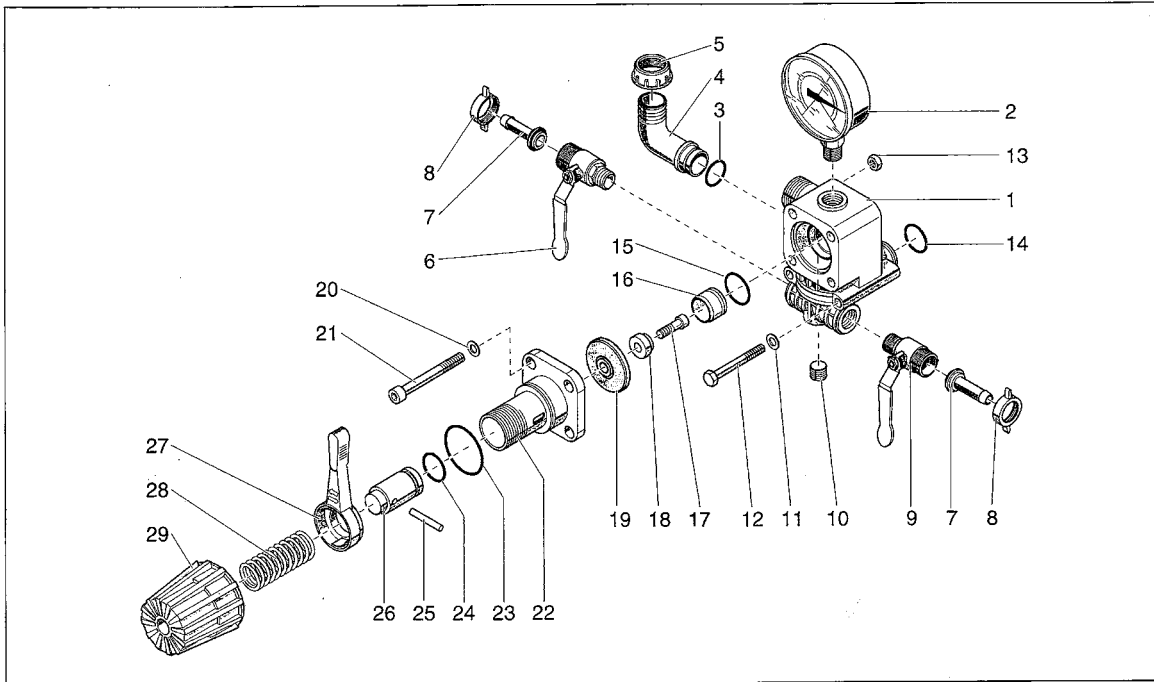
1. Overhaul pump according to pump manual.
2. Inspect pressure controller valve and diaphragm, replace if necessary.
3. Inspect all bolts, nuts, and fittings. Tighten or replace if necessary.
4. Make sure all safety guards and decals are in place and functional.
5. Replace 9 volt battery in transmitter/s.
6. Inspect wiring loom for damage.
7. Change engine oil according to engine manual.
8. Test 12 volt battery voltage output. Ensure it is close to 12.5 volts for optimal radio receiver performance.

PARTS DIAGRAMS

KARIN PRESSURE CONTROLLER PARTS EXPLOSION

REGOLATORI DI PRESSIONE IN PRODUZIONE - PRESSURE REGULATORS CURRENTLY PRODUCED

KARIN



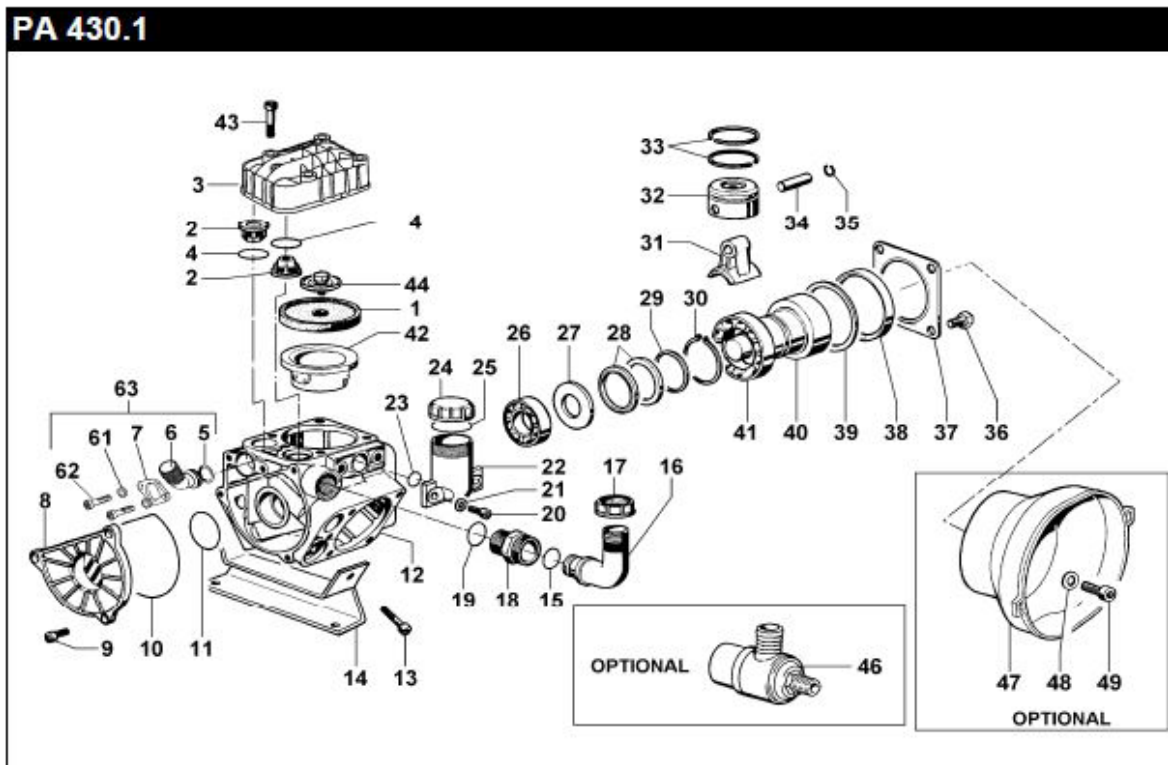
KIT RICAMBI - SPARES KIT KARIN												
KIT	CODICE PART NUMBER	25.9963.97.3										
	DESCRIZIONE DESCRIPTION	KIT VALVOLA KARIN										
POSIZIONE ESPLOSO POSITION NUMBER	3	14	15	16	18	19	23	24				
QUANTITÀ NEL KIT QUANTITIES INCLUDED	1	1	1	1	1	1	1	1				

NOMENCLATURA RICAMBI VALVOLA MOD. "KARIN"

POS.	CODICE PART NUMBER	Q.TY	DENOMINAZIONE DESCRIPTION	POS.	CODICE PART NUMBER	Q.TY	DENOMINAZIONE DESCRIPTION
1	24.0310.32.2	1	CORPO VALVOLA	17	86.1841.50.2	1	VITE M 4X12 UNI 5931 INOX
2	83.0080.00.2	1	MANOMETRO D-100	18	24.0319.51.2	1	CITTURATORE
3	80.3060.00.2	1	ANELLO OR 1,78x12,42	19	24.0313.36.2	1	MEMBRANA "HPS"
4	84.0521.00.2	1	RACCORDO A 90° D.20	20	84.3539.00.2	4	ROSETTA D.5,3x10x1
5	82.0042.10.2	1	GALLETTO G.3/4	21	86.1944.20.2	4	VITE M5x50 UNI5931
6	84.5544.10.2	1	RUBINETTO SX	22	24.0311.32.2	1	CALOTTA
7	84.1544.00.2	2	PORTAGOMMA D.10	23	80.3075.00.2	1	ANELLO OR 1,78x25,12
8	82.0010.00.2	2	GALLETTO G.1/2	24	80.3175.00.2	1	ANELLO OR 2,62x10,78
9	84.5544.00.2	1	RUBINETTO DX	25	65.1148.00.2	1	SPINA 4X30
10	85.2585.00.2	1	TAPPO CONICO G.3/8	26	24.0314.53.2	1	PISTONCINO
11	84.3585.00.2	2	ROSETTA D.6,4x12,5x1,6	27	24.0312.32.2	1	LEVA
12	86.2426.00.2	2	VITE M6x80 UNI 5737	28	24.0316.48.2	1	MOLLA
13	81.4525.00.2	4	DADO M5 UNI5588	29	24.0321.32.2	1	POMOLO DI REGOLAZIONE
14	80.3218.00.2	1	ANELLO OR 3,0x22				
15	80.3059.00.2	1	ANELLO OR 1,78x11,11				
16	24.0320.61.2	1	SEDE VALVOLA				

PARTS DIAGRAMS

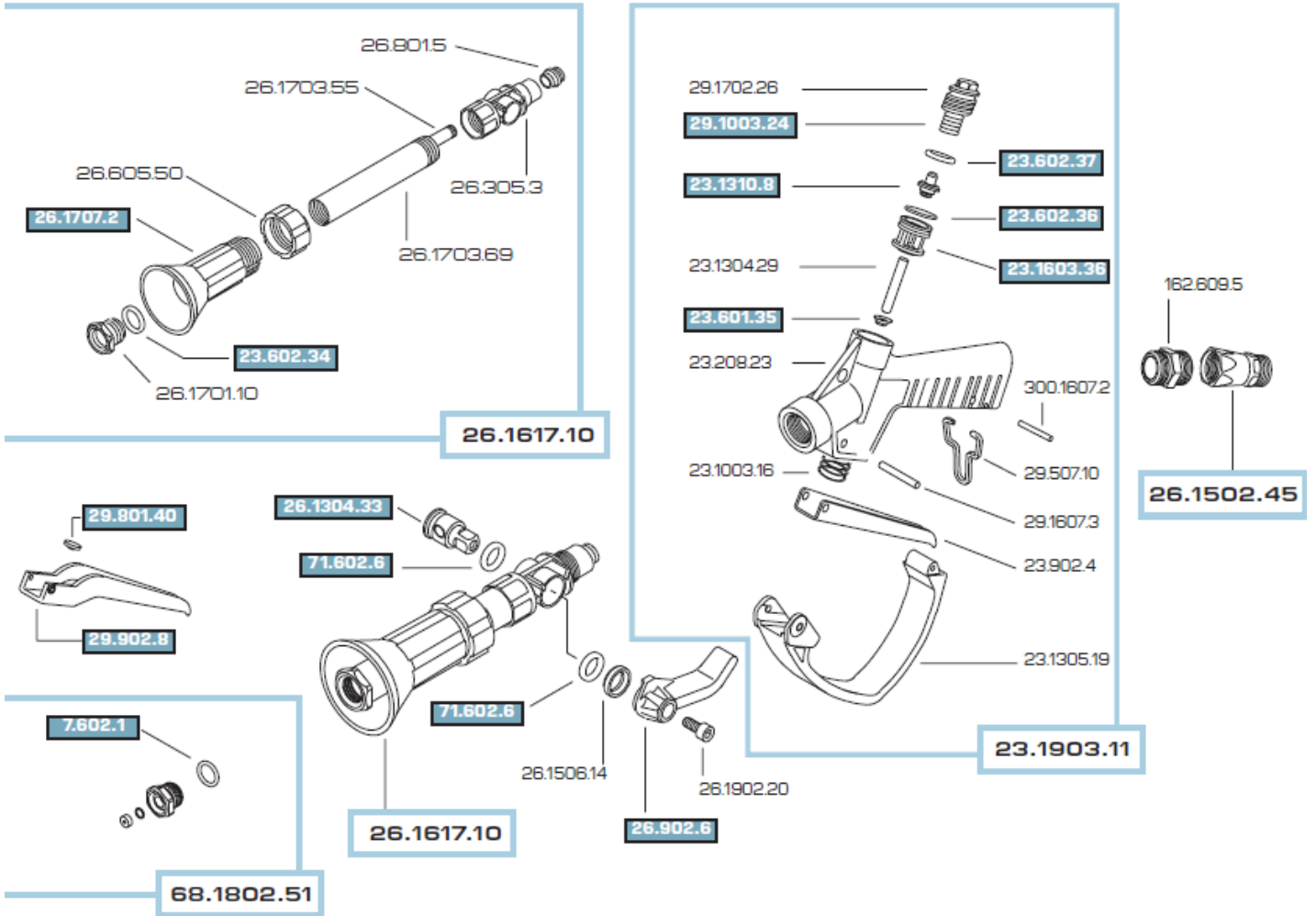
PUMP PA430 PARTS EXPLOSION



POS.	CODICE PART NO. REF.	DENOMINAZIONE - DESCRIPTION - DESCRIPTION	Q.TY	POS.	CODICE PART NO. REF.	DENOMINAZIONE - DESCRIPTION - DESCRIPTION	Q.TY
1	03.0040.31.2	PISTON DIAPHRAGM	3	26	81.2846.00.2	BEARING DIA.20x52x15	1
1	03.0040.00.2	DESMOPAN PISTON DIAPHRAGM	3	27	03.0011.61.2	SPACER	1
1	03.0040.36.2	HPS PISTON DIAPHRAGM	3	28	94.0047.76.2	CONROD RING	2
2	03.9821.97.3	VALVE ASSY	6	29	03.0012.61.2	SPACER	1
3	03.0202.09.2	HEAD	3	30	80.1331.00.2	SHAFT RING DIA5	1
4	03.0029.36.2	VALVE SEAL	6	31	03.0006.09.2	CONROD	3
5	80.3218.00.2	O-RING 3,0x2,2	1	32	03.0006.09.2	PISTON	3
6	31.1515.09.2	OUTLET FLANGE G. 1/2	1	33	81.8502.50.2	PISTON RING	6
7	31.1517.61.2	FLANGE	1	34	85.2006.00.2	PISTON PIN DIA.10	3
8	03.0003.09.2	SUCTION COVER	1	35	80.0003.00.2	RING DIA. 10	6
9	86.2131.00.2	SCREW M8x18 UNI5931	3	36	86.3186.00.2	SCREW M10x16 UNI5739	4
10	80.3210.66.2	O-RING 2,62x101,27	1	37	17.0013.61.2	COVER	1
11	80.3208.30.2	O-RING 2,62x36,14	1	38	80.2264.10.2	OIL SEAL DIA.58x90x10	1
12	03.0001.09.2	CRANKCASE	1	39	03.0015.61.2	SPACER	1
13	86.2900.00.2	SCREW M8x5 UNI5931	4	40	03.0018.26.2	CRANKSHAFT	1
14	03.0033.61.2	MOUNTING RAIL	2	41	81.2933.00.2	BEARING DIA.45x75x16	1
15	80.3200.00.2	O-RING 2,62x22,22	1	42	03.0008.01.2	PISTON SLEEVE	3
16	84.0542.00.2	90° ELBOW CONNECTOR DIA.25-1"	1	43	86.2893.00.2	SCREW M8x50 UNI5931	11
17	82.0049.00.2	WING NUT M34	1	44	03.0021.97.3	KIT DIAPHRAGM WASHER/SCREW AISI 316	3
18	83.5062.10.2	NIPPLES G.3/4-M34	1	46	24.3040.97.3	SAFETY VALVE 40bar (OPTIONAL)	1
19	80.3205.00.2	O-RING 2,62x25,07	1	47	31.1482.32.2	PLAIN SAFETY CONE (OPTIONAL)	1
20	86.2730.00.2	SCREW M8x30 UNI5931	2	48	84.3810.00.2	WASHER DIA.10,5x21x2 (OPTIONAL)	4
21	84.3685.00.2	WASHER DIA.8,4x15x1,5	2	49	86.3212.00.2	SCREW M10x20 UNI5931 (OPTIONAL)	4
22	23.0008.32.2	OIL FILLER	1	61	84.3586.00.2	WASHER D.6 UNI6592	2
23	80.3180.00.2	O-RING 2,62x15,08	1	62	86.2108.00.2	SCREW M6x16 UNI5931	2
24	85.2750.00.2	OIL FILLER CAP	1	63	31.8916.97.3	KIT G.1/2"	1
25	82.4120.00.2	GASKET DIA.45x19x1,5	1				

PARTS DIAGRAMS

T-400 NOZZLE PARTS EXPLOSION



WARRANTY POLICY

This document sets out the warranties that are given by Quik Corp Pty Ltd (ABN 18 081 235 556) in relation to the Product purchased from or manufactured by Quik Corp.

1. Definitions

1.1. In this warranty policy:

“Quik Corp” means Quik Corp Pty Ltd (ABN 18 081 235 556);

“Customer” means the party who originally acquired the Product from Quik Corp, or an authorised distributor, reseller or dealer for Quik Corp, for their own use.

“OEM Equipment” means the items of equipment fitted to the product by Quik Corp and which items have been manufactured by others and have their own manufacturer’s warranty.

“Product” means the goods or machinery that the Customer acquired and which were manufactured by Quik Corp.

2. Warranty

2.1. Subject to clause 3 and clause 4, Quik Corp warrants to the Customer that the Product will be free from proven defects in material and workmanship for twelve months from the date of purchase by the Customer, unless a specific warranty period applies to a component listed in appendix A.

2.2. The warranty is not transferable.

3. Limitations

3.1. This warranty does not cover damages resulting from shipping and handling, abuse, accidents, alterations, normal wear or failure to maintain or use the Quik Corp product with due care.

3.2. Quik Corp does not warrant that the operation of the product will be uninterrupted or error free. The Customer must read and follow all instructions and manuals for the setup, maintenance and use of the Product. If the Customer fails to do so, the product may not function correctly and may suffer other damage.

3.3. This warranty does not extend to OEM equipment which has its own warrant and the Customer must rely on the OEM equipment warranty for any defects in material or workmanship relating to the OEM equipment.

3.4. This warranty does not extend to cover corrosion due to any cause nor to any damage to painted or anodised surfaces that occurs after the Customer takes delivery of the product.

3.5. This warranty does not cover time required to diagnose a warranty problem.

3.6. The use of parts other than Quik Corp parts for repair of warranted items will automatically negate any warranty. Warranted components must be replaced with genuine Quik Corp parts.

3.7. Repairs by an unauthorised agent will automatically forfeit any warranty. Warranty repairs must be carried out by Quik Corp or an authorised Quik Corp Dealer/Service Agent only.

3.8. This warranty does not cover transportation or insurance costs for Products needing repair or replacement of warranted components. Nor does it cover any freight or insurance costs in obtaining new parts or returning old parts to Quik Corp for inspection purposes.

3.9. The time taken to remove and re-install a warranted part or component into other brands of equipment will not be covered by the Quik Corp warranty. Only parts and labour directly attributable to the repair of the Quik Corp unit is covered.

3.10. Quik Corp does not pay for cleaning, or clean the Product, accessories or work area before or after the warranty repair.

3.11. Quik Corp assumes no responsibility for improper choice of models or where products are used in excess of rated capacities and design functions, or under abnormal conditions. We make available a free technical service to help with any product selection, application or situation.

4. Repair or Replace

4.1. During the warranty period, Quik Corp or its authorised Dealer/Service Agent shall repair or replace, at Quik Corp’s discretion, without charge for parts and standard labour, any part of the Quik Corp Product which fails because of defects in material or workmanship unless the damage arises from:

4.1.1. Failure resulting from neglect or misuse, such as improper operation, lack of required maintenance or continued use of the Product after the discovery of a defect which results in greater damage to the Product;

4.1.2. Deteriorated or failed components such as but not limited to diaphragms, O-rings, hoses, seals, electrical wiring and connections damaged by corrosive chemicals, dirt and sand, excessive heat or moisture. The Customer should ensure the type and strength of chemicals used in the Product are compatible with the design of the Product;

4.1.3. The use of accessories, hardware, or software which were not manufactured by, installed by or approved in writing by Quik Corp;

4.1.4. The use of consumable items such as but not limited to oils, lubricants, diaphragms, O-rings, hoses seals, gaskets, filter elements, flow meters, clutches, drive belts, pivot pins, paint, batteries, radio transmitters, radio relays, push buttons, switches, hose rollers, aerials, spray guns and nozzles as these items are considered to be normal wear items and are not warranted;

4.1.5. Component failure caused by not performing scheduled maintenance service such as oils, grease, failure to clean tanks, pumps, filters, spray lines, nozzles or any other components and not tightening or replacing loose or missing bolts, nuts, fittings, shields and covers;

4.1.6. Damage or machine failure caused by carelessness or accidental damage, improper operation, inappropriate transportation or storage of the Product;

4.1.7. Any contamination or leakages caused or induced by the Customer;

4.1.8. Any use or operation of the Product outside the physical, electrical or environmental specifications of the Product;

4.1.9. Any alterations, modifications, attachments or unauthorised repairs to the Product which have not been authorised in writing by Quik Corp; and

4.1.10. Failures due to faulty or inadequate electrical sources of power.

5. OEM Warranties

5.1. All OEM (Original Equipment Manufacturer) components are covered by the Original Manufacturer’s Warranty. It is the Customer’s responsibility to familiarise themselves with these warranties, and subject to clause 7, that is the only warranty given to the customer in respect of that part of the Product.

6. Statutory Rights and Exclusions (New Zealand Only)

6.1. If the Product has been acquired for the purposes of a business then pursuant to section 43(2) of the Consumer Guarantees Act 1993 (“CGA”) it is agreed that the provisions of the CGA do not apply. To the fullest extent permitted by law in New Zealand, Quik Corp excludes any liability for any direct or indirect loss or damage of any kind arising from the Product, including consequential loss or damage or loss of profits, and loss or damage arising from the negligence of Quik Corp’s employees and agents. The warranty is personal to the Customer and cannot be transferred to a subsequent purchaser (although the purchaser, in some circumstances, may have rights under the CGA or the Sale of Goods Act). These exclusions do not exclude Quik Corp’s liability in respect of any warranties or guarantees implied by any relevant legislation in New Zealand which cannot legally be contracted out of.

WARRANTY POLICY contd.

7. Warranty Claim Procedure

7.1. To obtain warranty service:

7.1.1. The Warranty Registration Form must be returned to Quik Corp by the Customer within 14 days of taking delivery of the Product;

7.1.2. The Customer must read the Operating manual before operating the Product;

7.1.3. The Customer must provide with notice of the defect Quik Corp within the warranty period and within 14 days of discovery of the claimed problem, and allow reasonable time for replacement or repair.

7.2. Quik Corp may, at its discretion, request the Customer to deliver the alleged defective parts to an authorised servicing Dealer/Service Agent or to Quik Corp. Transportation of the Product to the authorised servicing Dealer/Service Agent or Quik Corp for warranty work is the responsibility of the Customer and is at the Customer's expense. Alternatively, the Customer may request a Quik Corp service technician to travel to the site of the Product to effect repairs or replacement, however the reasonable travel costs (including traveling time) of the service technician must be paid for by the Customer.

7.3. Any service outside the scope of this warranty will be charged for at Quik Corp's rates and terms then in effect.

8. Other

8.1. This warranty is in lieu of all other warranties (except those of title), expressed or implied, and there are no warranties of merchantability or fitness for a particular purpose.

8.2. Unless the Product has been purchased for personal, domestic or household use, any liability of Quik Corp to the Customer arising under statute which may not be excluded restricted or modified by agreement is limited to an amount equal to, as determined by Quik Corp:

8.2.1. Replacement of the Product or supply of equivalent Product;

8.2.2. The repair of the Product;

8.2.3. The payment of the cost of replacing or repairing the Product; or

8.2.4. Refund of the purchase price paid by the Customer.

8.3. Subject to clause 7.2, in no event shall Quik Corp or the authorised Dealer/Service Agent be liable for any loss of profit or any consequential, indirect or special loss, damage or injury of any kind whatsoever arising directly or indirectly from the Product or any defect.

8.4. The benefits under this Warranty are in addition to other rights and remedies under a law in relation to the Product.

8.5. The judgement of Quik Corp in all cases of claims under this warranty shall be final and conclusive and the Customer agrees to accept its decisions on all questions as to defect, repair and to the exchange of any part or parts.

Appendix A:

1. Bertolini Pumps – Warranty period is 6 months. If Quik Flush pump and tank cleaner is used from new then the warranty period is extended to 18 months.
2. Honda Motors – Refer to your Honda Manual. (Warranty period is up to 3 years)
3. Radio Receiver – Warranty period is 5 years on all non-moving parts.

WARRANTY REGISTRATION FORM

This form must be completed and returned to:

QUIK SPRAY PTY LTD
37 PRODUCTION AVE
WARANA, QLD 4575

Within 14 days of taking delivery of your unit.

Only when this registration form is completed and returned can Quik Spray fulfil all warranty obligations.

PRODUCT INFORMATION

Quik Spray Model/ Type: _____

Serial Number: _____

Dealer Name (if applicable): _____

Purchase Date: _____

PURCHASER DETAILS

Company Name: _____

Title Mr. Mrs. Ms. _____

Surname: _____

First Name: _____

Postal Address: _____

Town: _____ State: _____ Postcode: _____

Country: _____

Telephone: _____ Fax: _____

Fax: _____

Email: _____

AFFIX STAMP

**QUIK SPRAY
WARRANTY DIVISION
37 PRODUCTION AVENUE
WARANA QLD 4575
AUSTRALIA**

FOLD HERE AND SEAL AT TOP FOR RETURNING BY POST

Proudly Australian Owned and Operated

QUIK SPRAY[®]
REMOTE CONTROL RETRACTABLE HOSE REEL SYSTEMS

T 07 5493 8944
F 07 5493 8957

info@quikcorp.com.au
www.quikspray.com.au

37 Production Avenue
Warana, QLD 4575