

fiber

copper

rapidrun

audio/video

pc/computer

# Quiktron® Connectivity Solutions

# INTRODUCTION



As the leading provider of products and systems for electrical and digital building infrastructures, Legrand delivers an unequalled depth and breadth of innovative solutions.

In 2014, Legrand continued its efforts to provide customers with more integrated and complete end-to-end solutions through the acquisition of Quiktron. Quiktron products serve the datacomm and telecommunication industries with custom manufacturing of fiber optic and copper cable assemblies, as well as distribution of more than 5,000 standard items through leading channel partners. Quiktron products are manufactured in ISO 9001:2008 certified facilities in Hickory, North Carolina and Dayton, Ohio, and are backed by the solid expertise, advanced technology and skilled personnel to meet all of your cabling requirements.

This addition expands Legrand's network infrastructure solutions, delivering a complete system to support your data center, building network or audio/video application. Legrand's connectivity, physical support, cable management and cooling solutions feature notable product lines like Cablofil®, Electrorack®, On-Q®, Ortronics®, Quiktron®, RapidRun® and Wiremold® – for an integrated system that's designed to be better.

## Locations

---

**Albia, Iowa**  
**21 B. Avenue West**  
**Albia, IA 52531**

E-mail: [info@quiktron.com](mailto:info@quiktron.com)  
Toll Free: 800.361.0471  
Phone: 641.932.3503  
Fax: 641.932.3509

**Hickory, North Carolina**  
**925 Old Lenoir Road**  
**Hickory, NC 28601**

**Dayton, Ohio**  
**3599 Dayton Park Drive**  
**Dayton, OH 45414**



## Fiber Cables & Hardware

- Fiber Patch Cords..... 3-8
- Custom Fiber ..... 9-10
- Laser-Optimized..... 13-14
- Low Loss Cable Assemblies..... 15-16
- LC Uniboot ..... 17
- MTP..... 18-20
- Multimode ..... 21-24
- Single-mode..... 25-27
- Fiber Accessories ..... 28-29
- Mode Conditioning ..... 30
- Optical Cable Nodes ..... 31-32
- Fiber Optic Hardware..... 33-36
- Media Converters & Chassis..... 37-38
- Fiber Optic Testers ..... 39-41

## Copper Network Cables

- Cat5e..... 45-46
- Cat6..... 47
- Cat6a..... 48
- Cat6 Snagless Slim ..... 49
- Bundled Trunk Cables ..... 50
- Telco ..... 51
- Cat5e 110 Patch Cables ..... 52
- Phone Cords & RJ Couplers..... 53
- Specialty..... 54
- Direct Attach Cables ..... 55-57
- Optical Transceivers..... 58-60

## RapidRun

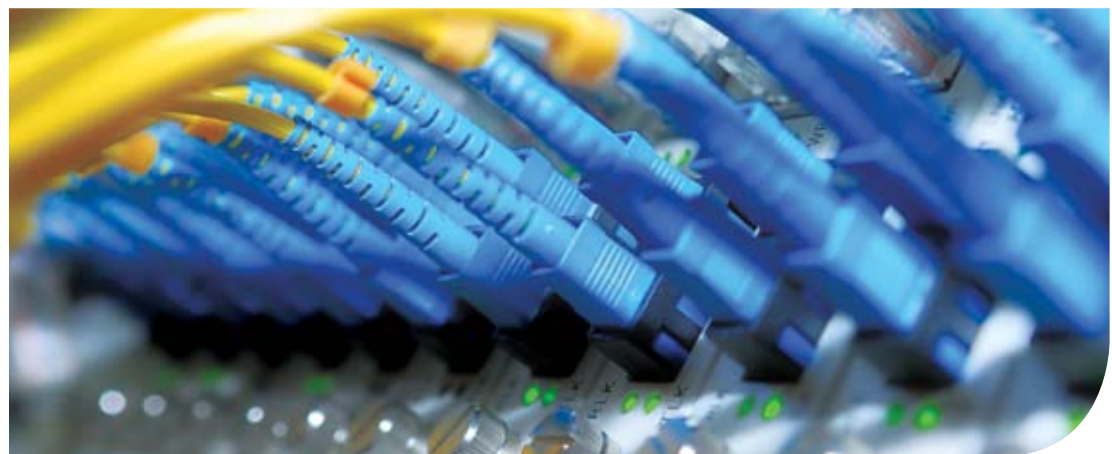
- How RapidRun Works..... 63-64
- Applications..... 65-66
- RapidRun Multi-Format Runners ..... 67
- RapidRun Multi-Format Wall Plates..... 68
- RapidRun Multi-Format Flying Leads..... 69
- RapidRun Optical ..... 70

## Audio/Video Cables & Devices

- Digital Audio/Video..... 73-81
- Active Devices..... 82-85
- Audio/Video Wall Plates..... 86
- Mobility..... 87-88
- Signal Distribution & Control ..... 89-92
- Analog Audio & Video ..... 93-102

## PC/Computer Cables, Devices & Accessories

- Monitor & Projector ..... 105-109
- Splitters & Extenders ..... 110-112
- Keyboard & Mouse..... 113
- Serial & Parallel ..... 114
- All-Lines..... 115
- USB ..... 116-121
- Cable Management ..... 122
- Power Cords ..... 123-132



# Fiber Cables & Hardware

Quiktron has been the premier manufacturer of high performance fiber optic cables since 1994. Whether you are looking for standard or custom fiber cables, Quiktron can provide the ideal solution for your requirements based on your timeframe and within your budget. Our products range from simple to complex, standard to custom - all available for quick delivery and backed by customer support that is unparalleled in the marketplace.

Whether your application requires simple patch cables, complex multi-strand pre-terminated trunk cables or something in between, Quiktron has the experience, expertise and capabilities to meet virtually any fiber optic cable requirement in a timeframe that moves at the speed of your business.

We consistently stretch our limits to ensure that we are providing you the most personal, knowledgeable and timely service in finding the right fiber cable for your application. Contact your customer service representative for more information on Quiktron's fiber optic cable solutions.

## In This Section:

▪ Fiber Patch Cords.....	3-8
▪ Custom Fiber .....	9-10
▪ Laser-Optimized.....	13-14
▪ Low Loss Cable Assemblies.....	15-16
▪ LC Uniboot.....	17
▪ MTP.....	18-20
▪ Multimode .....	21-24
▪ Single-mode.....	25-27
▪ Fiber Accessories .....	28-29
▪ Mode Conditioning .....	30
▪ Optical Cable Nodes .....	31-32
▪ Fiber Optic Hardware.....	33-36
▪ Media Converters & Chassis.....	37-38
▪ Fiber Optic Testers .....	39-41



pg. 17



pg. 28



pg. 35



pg. 39

# FIBER PATCH CORDS

## Fiber Jumper Cables

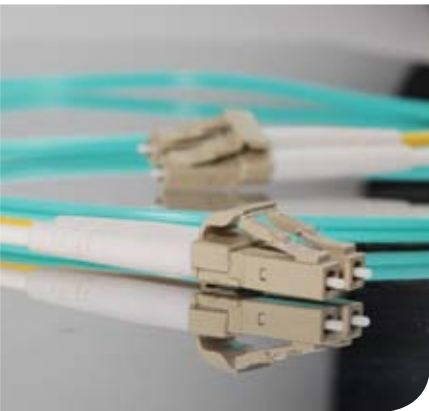
Legrand can produce virtually any type of fiber optic patch cable quickly and cost effectively. Standard multimode (50 and 62.5µm), laser-optimized multimode (OM3, OM4) and single-mode (OS2) assemblies are a core part of our business.

Visually inspected at 400x magnification, our fiber jumpers are performance tested for insertion and return loss parameters. Produced by leading manufacturers of fiber cables and connectors, they can ship in as little as two business days and are available in a variety of custom configurations – including your choice of connector polish, diameter, jacket and boot color.

### Features:

- 100% optically tested
- Factory terminated for superior performance
- Meets or exceeds industry standards for insertion loss and back reflection
- Stock available for same day shipping
- Custom assemblies available to ship within days
- Corning® assemblies available upon request
- TAA compliant assemblies available upon request
- Most connector brands supported upon request
- Test results available upon request

Q-Series Fiber Solutions



- Insertion loss and reflectance measurements that meet or exceed industry standards
- Domestically manufactured using the highest quality components
- All cables and connectors are built to industry standards
- Wide variety of connectors available including ST, SC, LC, FC, MTRJ, Uniboot LC, MTP/MPO and more
- Ultra PC and angled PC connector polishing options
- Advanced automated assembly and polishing techniques
- Factory termination results in superior performance compared to field terminated cables
- Single-mode, 50µm, 10Gb laser-optimized OM3 & OM4 or 62.5µm multimode fiber
- Bend tolerant fiber is available for both multimode and single-mode

Value Series Fiber Solutions



- All cables and connectors are built to industry standards
- Wide variety of connectors available including ST, SC, LC, FC, MTRJ, Uniboot LCs and more
- Insertion loss and reflectance measured on every connector
- We offer ultra PC and angled PC connector polishing options
- Factory termination results in superior performance compared to field terminated cables
- Single-mode, 50µm, 10Gb laser-optimized OM3 & OM4 or 62.5µm multimode fiber
- Simplex and duplex cable
- Most items are available for same day shipping



## Value Series Fiber Jumpers

Length	10Gb				50µm Multimode							
	SC SC	LC LC	LC SC	LC ST	SC SC	LC LC	LC SC	LC MTRJ	LC ST	MTRJ SC	ST SC	ST ST
1m	852-442-003	852-LL2-003	852-L42-003	852-L22-003	850-332-003	850-LL2-003	850-L32-003	851-0L2-003	850-L12-003	851-032-003	850-132-003	850-112-003
2m	852-442-006	852-LL2-006	852-L42-006	852-L22-006	850-332-006	850-LL2-006	850-L32-006	851-0L2-006	850-L12-006	851-032-006	850-132-006	850-112-006
3m	852-442-009	852-LL2-009	852-L42-009	852-L22-009	850-332-009	850-LL2-009	850-L32-009	851-0L2-009	850-L12-009	851-032-009	850-132-009	850-112-009
4m	852-442-013	852-LL2-013	852-L42-013	852-L22-013	850-332-013	850-LL2-013	850-L32-013	851-0L2-013	850-L12-013	851-032-013	850-132-013	850-112-013
5m	852-442-017	852-LL2-017	852-L42-017	852-L22-017	850-332-017	850-LL2-017	850-L32-017	851-0L2-017	850-L12-017	851-032-017	850-132-017	850-112-017
6m	852-442-020	852-LL2-020	852-L42-020	852-L22-020	850-332-020	850-LL2-020	850-L32-020	851-0L2-020	850-L12-020	851-032-020	850-132-020	850-112-020
7m	852-442-023	852-LL2-023	852-L42-023	852-L22-023	850-332-023	850-LL2-023	850-L32-023	851-0L2-023	850-L12-023	851-032-023	850-132-023	850-112-023
8m	852-442-026	852-LL2-026	852-L42-026	852-L22-026	850-332-026	850-LL2-026	850-L32-026	851-0L2-026	850-L12-026	851-032-026	850-132-026	850-112-026
9m	852-442-030	852-LL2-030	852-L42-030	852-L22-030	850-332-030	850-LL2-030	850-L32-030	851-0L2-030	850-L12-030	851-032-030	850-132-030	850-112-030
10m	852-442-033	852-LL2-033	852-L42-033	852-L22-033	850-332-033	850-LL2-033	850-L32-033	851-0L2-033	850-L12-033	851-032-033	850-132-033	850-112-033
12m	852-442-040	852-LL2-040	852-L42-040	852-L22-040	850-332-040	850-LL2-040	850-L32-040	851-0L2-040	850-L12-040	851-032-040	850-132-040	850-112-040
15m	852-442-050	852-LL2-050	852-L42-050	852-L22-050	850-332-050	850-LL2-050	850-L32-050	851-0L2-050	850-L12-050	851-032-050	850-132-050	850-112-050
18m	852-442-059	852-LL2-059	852-L42-059	852-L22-059	850-332-059	850-LL2-059	850-L32-059	851-0L2-059	850-L12-059	851-032-059	850-132-059	850-112-059
20m	852-442-066	852-LL2-066	852-L42-066	852-L22-066	850-332-066	850-LL2-066	850-L32-066	851-0L2-066	850-L12-066	851-032-066	850-132-066	850-112-066
25m	852-442-083	852-LL2-083	852-L42-083	852-L22-083	850-332-083	850-LL2-083	850-L32-083	851-0L2-083	850-L12-083	851-032-083	850-132-083	850-112-083
30m	852-442-099	852-LL2-099	852-L42-099	852-L22-099	850-332-099	850-LL2-099	850-L32-099	851-0L2-099	850-L12-099	851-032-099	850-132-099	850-112-099

IMPORT SMART #

# FIBER PATCH CORDS

## Value Series™ Fiber Jumpers

IMPORT SMART #	Length	62.5µm Multimode									
		SC SC	LC LC	LC SC	LC MTRJ	LC ST	MTRJ SC	ST SC	ST ST	MTRJ MTRJ	MTRJ ST
	1m	810-332-003	810-LL2-003	810-L32-003	811-0L2-003	810-L12-003	811-032-003	810-132-003	810-112-003	811-002-003	811-012-003
	2m	810-332-006	810-LL2-006	810-L32-006	811-0L2-006	810-L12-006	811-032-006	810-132-006	810-112-006	811-002-006	811-012-006
	3m	810-332-009	810-LL2-009	810-L32-009	811-0L2-009	810-L12-009	811-032-009	810-132-009	810-112-009	811-002-009	811-012-009
	4m	810-332-013	810-LL2-013	810-L32-013	811-0L2-013	810-L12-013	811-032-013	810-132-013	810-112-013	811-002-013	811-012-013
	5m	810-332-017	810-LL2-017	810-L32-017	811-0L2-017	810-L12-017	811-032-017	810-132-017	810-112-017	811-002-017	811-012-017
	6m	810-332-020	810-LL2-020	810-L32-020	811-0L2-020	810-L12-020	811-032-020	810-132-020	810-112-020	811-002-020	811-012-020
	7m	810-332-023	810-LL2-023	810-L32-023	811-0L2-023	810-L12-023	811-032-023	810-132-023	810-112-023	811-002-023	811-012-023
	8m	810-332-026	810-LL2-026	810-L32-026	811-0L2-026	810-L12-026	811-032-026	810-132-026	810-112-026	811-002-026	811-012-026
	9m	810-332-030	810-LL2-030	810-L32-030	811-0L2-030	810-L12-030	811-032-030	810-132-030	810-112-030	811-002-030	811-012-030
	10m	810-332-033	810-LL2-033	810-L32-033	811-0L2-033	810-L12-033	811-032-033	810-132-033	810-112-033	811-002-033	811-012-033
	12m	810-332-040	810-LL2-040	810-L32-040	811-0L2-040	810-L12-040	811-032-040	810-132-040	810-112-040	811-002-040	811-012-040
	15m	810-332-050	810-LL2-050	810-L32-050	811-0L2-050	810-L12-050	811-032-050	810-132-050	810-112-050	811-002-050	811-012-050
	18m	810-332-059	810-LL2-059	810-L32-059	811-0L2-059	810-L12-059	811-032-059	810-132-059	810-112-059	811-002-059	811-012-059
	20m	810-332-066	810-LL2-066	810-L32-066	811-0L2-066	810-L12-066	811-032-066	810-132-066	810-112-066	811-002-066	811-012-066
	25m	810-332-083	810-LL2-083	810-L32-083	811-0L2-083	810-L12-083	811-032-083	810-132-083	810-112-083	811-002-083	811-012-083
	30m	810-332-099	810-LL2-099	810-L32-099	811-0L2-099	810-L12-099	811-032-099	810-132-099	810-112-099	811-002-099	811-012-099

IMPORT SMART #	Length	9µm Duplex							9µm Simplex				
		SC SC	LC LC	LC SC	LC ST	ST SC	ST ST	FC FC	SC FC	ST FC	SC SC	FC FC	ST ST
	1m	810-447-003	810-LL7-003	810-L47-003	810-L27-003	810-247-003	810-227-003	810-667-003	810-467-003	810-267-003	810-445-003	810-665-003	810-225-003
	2m	810-447-006	810-LL7-006	810-L47-006	810-L27-006	810-247-006	810-227-006	810-667-006	810-467-006	810-267-006	810-445-006	810-665-006	810-225-006
	3m	810-447-009	810-LL7-009	810-L47-009	810-L27-009	810-247-009	810-227-009	810-667-009	810-467-009	810-267-009	810-445-009	810-665-009	810-225-009
	4m	810-447-013	810-LL7-013	810-L47-013	810-L27-013	810-247-013	810-227-013	810-667-013	810-467-013	810-267-013	810-445-013	810-665-013	810-225-013
	5m	810-447-017	810-LL7-017	810-L47-017	810-L27-017	810-247-017	810-227-017	810-667-017	810-467-017	810-267-017	810-445-017	810-665-017	810-225-017
	6m	810-447-020	810-LL7-020	810-L47-020	810-L27-020	810-247-020	810-227-020	810-667-020	810-467-020	810-267-020	810-445-020	810-665-020	810-225-020
	7m	810-447-023	810-LL7-023	810-L47-023	810-L27-023	810-247-023	810-227-023	810-667-023	810-467-023	810-267-023	810-445-023	810-665-023	810-225-023
	8m	810-447-026	810-LL7-026	810-L47-026	810-L27-026	810-247-026	810-227-026	810-667-026	810-467-026	810-267-026	810-445-026	810-665-026	810-225-026
	9m	810-447-030	810-LL7-030	810-L47-030	810-L27-030	810-247-030	810-227-030	810-667-030	810-467-030	810-267-030	810-445-030	810-665-030	810-225-030
	10m	810-447-033	810-LL7-033	810-L47-033	810-L27-033	810-247-033	810-227-033	810-667-033	810-467-033	810-267-033	810-445-033	810-665-033	810-225-033
	12m	810-447-040	810-LL7-040	810-L47-040	810-L27-040	810-247-040	810-227-040	810-667-040	810-467-040	810-267-040	810-445-040	810-665-040	810-225-040
	15m	810-447-050	810-LL7-050	810-L47-050	810-L27-050	810-247-050	810-227-050	810-667-050	810-467-050	810-267-050	810-445-050	810-665-050	810-225-050
	18m	810-447-059	810-LL7-059	810-L47-059	810-L27-059	810-247-059	810-227-059	810-667-059	810-467-059	810-267-059	810-445-059	810-665-059	810-225-059
	20m	810-447-066	810-LL7-066	810-L47-066	810-L27-066	810-247-066	810-227-066	810-667-066	810-467-066	810-267-066	810-445-066	810-665-066	810-225-066
	25m	810-447-083	810-LL7-083	810-L47-083	810-L27-083	810-247-083	810-227-083	810-667-083	810-467-083	810-267-083	810-445-083	810-665-083	810-225-083
	30m	810-447-099	810-LL7-099	810-L47-099	810-L27-099	810-247-099	810-227-099	810-667-099	810-467-099	810-267-099	810-445-099	810-665-099	810-225-099

Note: TAA compliant available upon request.