



**Raccorderia ASME-BPE  
e Sanitaria**

***ASME-BPE and  
Sanitary Fittings***

*Your partner  
in process technology*

Raccorderia ASME-BPE  
e Sanitaria

ASME-BPE and Sanitary  
Fittings



# Indice / Index

Raccorderia ASME-BPE e Sanitaria	ASME-BPE and Sanitary Fittings	Page
Raccorderia per l'industria farmaceutica e di biotecnologia	Fittings for the Pharmaceutical / Biotech ind.	2
Marcatura raccorderia	Fittings Marking	3

Raccordi clamp in acciaio inox	Stainless Steel Clamp	Page
Tronchetto Clamp saldabile	Clamp ferrule	4
Curva 90°	90° Elbow	5
Curva 45°	45° Elbow	5
Raccordo a T	Straight TEE	6
Raccordo a T ridotto	Reducing TEE	6
Raccordo a T corto	Short outlet TEE	7
Croce	Cross	7
Tappo Clamp	Solid end cap	8
Riduzione concentrica	Concentric reducer	8
Riduzione eccentrica	Eccentric reducer	9
Adattatore maschio (Clamp-gas)	Male adapter (Clamp-gas)	10
Adattatore femmina (Clamp-gas)	Female adapter (Clamp-gas)	11
Portagomma clamp	Rubber hose adapter	12
Connessione TK in-linea	TK In-line connection	13
Connessione TK per serbatoi	TK connection for tanks	13
Clamp	Clamp	14

Raccordi saldabili in acciaio inox	Stainless Steel Weld Connections	Page
Curva a 90°	90° Elbow	15
Curva a 45°	45° Elbow	15
Raccordo a T	Straight TEE	16
Raccordo a T ridotto	Reducing TEE	16
Croce	Cross	17
Riduzione concentrica	Concentric reducer	17
Riduzione eccentrica	Eccentric reducer	18
Tubo	Tubing	19

Accessori	Accessories	Page
Guarnizioni	Gaskets	20
Reggitubo	Support devices	22
Sifone di scarico	Drain-trap	23
Sfere di lavaggio	Spray-ball	24
Passapareti sterili	Crosswall	24
Pezzi speciali	Custom fabrication	25

Dimensioni ed articoli del presente catalogo possono essere cambiati senza preavviso.

Dimensions and items of the present catalogue could be changed without giving any advance notice.

## Raccorderia ASME-BPE e sanitaria

### Raccorderia per l'industria farmaceutica e di biotecnologia

TECNinox offre una vasta gamma di componenti con finiture superficiali adatte ad essere utilizzati nell'industria farmaceutica e di biotecnologia. I componenti sono disponibili in dimensioni da 1/2" a 4" secondo ASME BPE e da 1/2" a 12" di tipo sanitaria. Ciascuna tipologia può essere fornita con attacchi a saldare o Tri-Clamp®.

### Materiale e Tracciabilità

TECNinox offre la raccorderia in dimensioni ASME BPE in AISI 316L. Tutta la raccorderia riporta la marcatura conforme alle norme ASME BPE permettendo l'identificazione delle caratteristiche di base e la tracciabilità del fornitore dell'acciaio inossidabile originario. Tutti i componenti ricavati da tubi sono conformi alle ASTM A 269 / A 270.

### Opzioni di finitura superficiale

TECNinox offre molteplici opzioni di finitura superficiale per soddisfare le specifiche del Cliente.

Le finiture superficiali del formato standard sono satinata scotch brite interno con  $Ra=0.5\mu\text{m} / 20\mu\text{inch}$  (SF-1) e satinata esterne con  $Ra=0.8\mu\text{m} / 30\mu\text{inch}$ .

Finiture superficiali diverse sono fornite a richiesta in conformità alla tabella SF-3 sotto riportata.

Per la raccorderia sanitaria la fornitura può essere richiesta elettrolucidata e passivata.

## ASME-BPE and Sanitary Fittings

### Fittings for the Pharmaceutical and Biotech Industries

TECNinox offers the widest range of fittings and surface finishes available for the use in the Pharmaceutical and Biotech industries. Fittings are offered in a wide range of sizes from 1/2" to 4" according to ASME BPE and from 1/2" to 12" of sanitary type. They can be fitted with weld or Tri-Clamp® connections.

### Material e Traceability

TECNinox offers fittings in BPE dimensions in AISI 316L. All fittings are permanently marked with original heat numbers allowing full traceability back to the original stainless steel supplier.

All tubular materials meet ASTM A 269 / A 270 requirements.

### Surface finish options

TECNinox offers multiple surface finish options to meet the Customer's specifications.

The superficial finishes of the standard size are internally scotch brite satinated  $Ra=0.5\mu\text{m} / 20\mu\text{inch}$  (SF-1) and externally satinated  $Ra=0.8\mu\text{m} / 30\mu\text{inch}$ .

Different surface finishes can be supplied on request according to the below SF-3 table.

Sanitary fittings can be requested electropolished and passivated.

Table DT-1 Nominal OD Tubing Size

Size	Tube OD		Tube Wall Thickness	
	mm.	in.	mm.	in.
1/4"	6.35	0.25	0.89	0.035
3/8"	9.35	0.375	0.89	0.035
1/2"	12.70	0.5	1.65	0.065
3/4"	19.05	0.75	1.65	0.065
1"	25.40	1	1.65	0.065
1 1/2"	38.10	1.5	1.65	0.065
2"	50.80	2	1.65	0.065
2 1/2"	63.50	2.5	1.65	0.065
3"	76.20	3	1.65	0.065
4"	101.60	4	2.11	0.083
6"	152.40	6	2.77	0.109
<b>Sanitary Tubing Size</b>				
8"	203.2	8	2.77	0.109
10"	254	10	2.77	0.109
12"	304.8	12	2.77	0.109

Table SF-3 Ra Readings for Product Contact Surfaces

Surface designation	Mechanically polished	
	μ-in.	μm
SF0	No finish requirement	No finish requirement
* SF1	20	0.51
SF2	25	0.64
SF3	30	0.76

Surface designation	Mechanically polished and electropolished	
	μ-in.	μm
SF4	15	0.38
SF5	20	0.51
SF6	25	0.64

\* Materiale a stock / Material on stock

## Marchatura raccorderia

Ogni componente ASME-BPE è così marcato:

- Costruttore
- N° tabella BPE
- Lega materiale
- N° di colata
- Diametro in inch
- Commessa lavorazione componente
- ASME BPE
- Classe di finitura interna

### Imballo

- Il componente viene fornito con ciascuna estremità protetta e chiusa per evitare danni e contatti con contaminanti.
- Ciascun componente è fornito in sacchetto di PVC

### Documentazione

A richiesta possono essere forniti certificati in conformità alla UNI-EN 10204 di tipo

- certificati di conformità tipo 2.1
- certificati di analisi chimica del materiale base tipo 3.1
- certificati di rugosità con strip report tipo 2.2
- certificati per trattamenti superficiali tipo 2.2

## Fittings Marking

Each ASME-BPE fitting is marked as follows:

- Manufacturer
- BPE table number
- Material alloy
- Heat number
- Inch diameter
- Component vendor job
- ASME BPE
- Internal finish class

### Packaging

- The ends, either clamp or weld, are capped to prevent damage and contamination
- All fittings are packaged in PVC bags

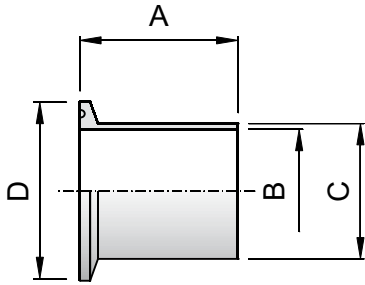
### Documentation

On request we can supply UNI-EN 10204 complying certificates such as

- 2.1 conformity certificates
- 3.1 material chemical analysis certificates
- 2.2 roughness certificates with report
- 2.2 surface treatment certificates



# Tronchetto Clamp Saldabile / Clamp Ferrule

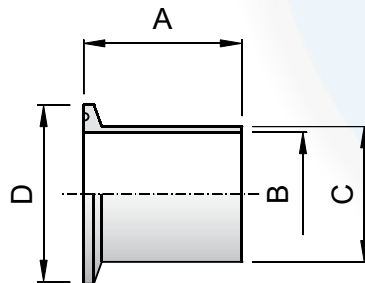


BPE TABLE #DT-22

Code	Size	A	B	C	D
14WMP-1/2-6T	1/2"	12.7	9.4	12.7	25.0
14WMP-3/4-6T	3/4"	12.7	15.7	19.05	25.0
14WMP-1-6T	1"	12.7	22.1	25.4	50.4
14WMP-1-1/2-6T	1 1/2"	12.7	34.8	38.1	50.4
14WMP-2-6T	2"	12.7	47.5	50.8	63.9
14WMP-2-1/2-6T	2 1/2"	12.7	60.2	63.5	77.5
14WMP-3-6T	3"	12.7	72.9	76.2	90.9
14WMP-4-6T	4"	15.9	97.4	101.6	118.9

L14AM7-1/2-6T	1/2"	28.7	9.4	12.7	25.0
L14AM7-3/4-6T	3/4"	28.7	15.7	19.05	25.0
L14AM7-1-6T	1"	28.7	22.1	25.4	50.4
L14AM7-1-1/2-6T	1 1/2"	28.7	34.1	38.1	50.4
L14AM7-2-6T	2"	28.7	47.5	50.8	63.9
L14AM7-2-1/2-6T	2 1/2"	28.7	60.2	63.5	77.5
L14AM7-3-6T	3"	28.7	72.9	76.2	90.9
L14AM7-4-6T	4"	28.7	97.4	101.6	118.9

L14AWF7-1/2-6T	1/2"	44.5	9.4	12.7	25.0
L14AWF7-3/4-6T	3/4"	44.5	15.7	19.05	25.0
L14AWF7-1-6T	1"	44.5	22.1	25.4	50.4
L14AWF7-1-1/2-6T	1 1/2"	44.5	34.1	38.1	50.4
L14AWF7-2-6T	2"	57.2	47.5	50.8	63.9
L14AWF7-2-1/2-6T	2 1/2"	57.2	60.2	63.5	77.5
L14AWF7-3-6T	3"	57.2	72.9	76.2	90.9
L14AWF7-4-6T	4"	76.2	97.4	101.6	118.9
L14AWF7-6-6T	6"	76.2	146.8	152.4	166.7



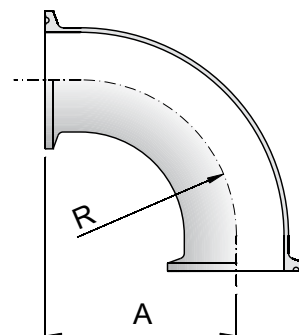
SANITARY

Code	Size	A	B	C	D
14WLMO-8-6T	8"	28	197.6	203	217.7
14WLMO-10-6T	10"	28	248.4	254	268.5
14WLMO-12-6T	12"	28	299.3	304.8	319.3

14WLMP-1/2-6T	1/2"	76	9.4	12.7	25.0
14WLMP-3/4-6T	3/4"	76	15.7	19.05	25.0
14WLMP-1-6T	1"	76	22.1	25.4	50.4
14WLMP-1-1/2-6T	1 1/2"	76	34.1	38.1	50.4
14WLMP-2-6T	2"	76	47.5	50.8	63.9
14WLMP-2-1/2-6T	2 1/2"	76	60.2	63.5	77.5
14WLMP-3-6T	3"	101	72.9	76.2	90.9
14WLMP-4-6T	4"	101	97.4	101.6	118.9

## Curva 90° / 90° Elbow

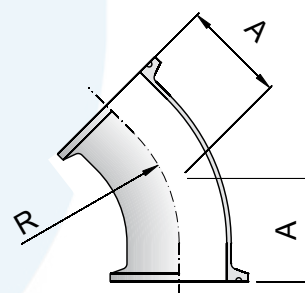
Code	Size	A	R	2CMP-90ELL
2CMP-90ELL-1/2-6T	1/2"	41.3	28.6	
2CMP-90ELL-3/4-6T	3/4"	41.3	28.6	
2CMP-90ELL-1-6T	1"	50.8	38.1	
2CMP-90ELL-1 1/2-6T	1-1/2"	69.8	57.2	
2CMP-90ELL-2-6T	2"	88.9	76.1	
2CMP-90ELL-2 1/2-6T	2-1/2"	108.0	95.3	
2CMP-90ELL-3-6T	3"	127.0	114.3	
2CMP-90ELL-4-6T	4"	168.3	152.4	
2CMP-90ELL-6-6T	6"	266.7	228.6	



BPE TABLE #DT-16

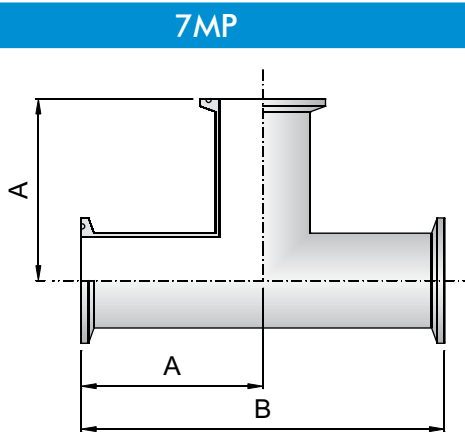
## Curva 45° / 45° Elbow

Code	Size	A	R	2KMP-45ELL
2KMP-45ELL-1/2-6T	1/2"	25.40	28.6	
2KMP-45ELL-3/4-6T	3/4"	25.40	28.6	
2KMP-45ELL-1-6T	1"	28.60	38.1	
2KMP-45ELL-1 1/2-6T	1-1/2"	36.50	57.2	
2KMP-45ELL-2-6T	2"	44.50	76.2	
2KMP-45ELL-2 1/2-6T	2-1/2"	52.40	95.3	
2KMP-45ELL-3-6T	3"	60.30	114.3	
2KMP-45ELL-4-6T	4"	79.40	152.4	
2KMP-45ELL-6-6T	6"	133.40	228.6	



BPE TABLE #DT-17

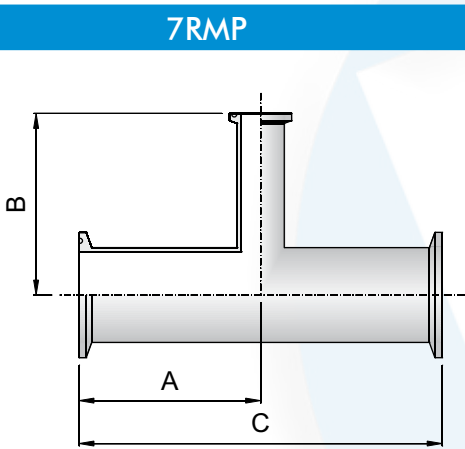
## Raccordo a T / Straight Tee



BPE TABLE #DT-18

7MP	Code	Size	A	B
	7MP-1/2-6T	1/2"	57.2	114.3
	7MP-3/4-6T	3/4"	60.3	120.6
	7MP-1-6T	1"	66.7	133.4
	7MP-1-1/2-6T	1-1/2"	73.0	146.0
	7MP-2-6T	2"	85.7	171.5
	7MP-2-1/2-6T	2-1/2"	92.1	184.2
	7MP-3-6T	3"	98.4	196.9
	7MP-4-6T	4"	120.7	241.3

## Raccordo a T ridotto / Reducing Tee



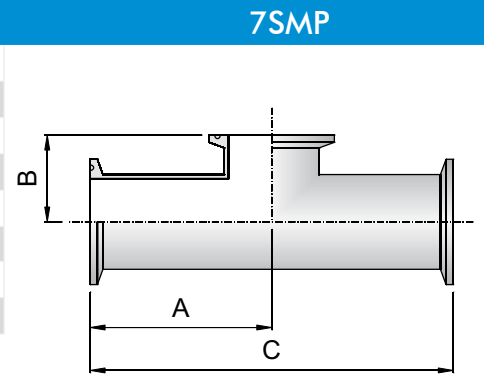
BPE TABLE #DT-19

7RMP	Code	Size	A	B	C
	7RMP-3/4X1/2	3/4"X1/2"	63.5	63.5	127.0
	7RMP-1X1/2-6T	1"X1/2"	66.7	66.6	133.4
	7RMP-1X3/4-6T	1"X3/4"	66.7	66.6	133.4
	7RMP-11/2X1/2-6T	11/2"X1/2"	73.0	73.0	146.0
	7RMP-11/2X3/4-6T	11/2"X3/4"	73.0	73.0	146.0
	7RMP-11/2X1-6T	11/2"X1"	73.0	73.0	146.0
	7RMP-2X1/2-6T	2"X1/2"	85,7	79,4	171,4
	7RMP-2X3/4-6T	2"X3/4"	85,7	79,4	171,4
	7RMP-2X1-6T	2"X1"	85,7	79,4	171,4
	7RMP-2X11/2-6T	2"X11/2"	85,7	79,4	171,4
	7RMP-21/2X1-6T	21/2"X1"	92.1	85.7	184.2
	7RMP-21/2X11/2-6T	21/2"X11/2"	92.1	85.7	184.2
	7RMP-21/2X2-6T	21/2"X2"	92.1	85.7	184.2
	7RMP-3X1-6T	3"X1"	98.4	92.1	196.8
	7RMP-3X11/2-6T	3"X11/2"	98.4	92.1	196.8
	7RMP-3X2-6T	3"X2"	98.4	92.1	196.8
	7RMP-3X21/2-6T	3"X21/2"	98.4	92.1	196.8
	7RMP-4X1-6T	4"X1"	120.7	104.8	241.4
	7RMP-4X11/2-6T	4"X11/2"	120.7	104.8	241.4
	7RMP-4X2-6T	4"X2"	120.7	111.1	241.4
	7RMP-4X21/2-6T	4"X21/2"	120.7	111.1	241.4
	7RMP-4X3-6T	4"X3"	120.7	111.1	241.4



## Raccordo a T corto / Short outlet Tee

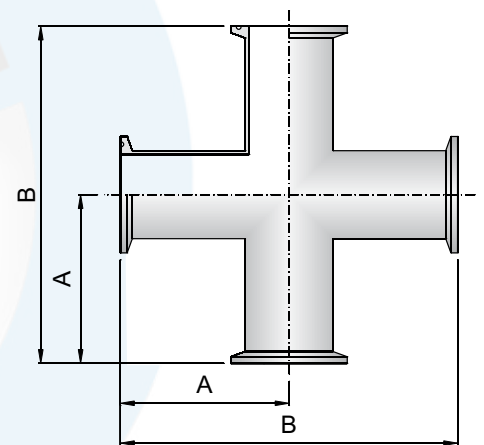
Code	Size	A	B	C
7SMP-1/2-6T	1/2"	57.20	25.4	114.4
7SMP-3/4-6T	3/4"	60.30	28.6	120.6
7SMP-1-6T	1"	66.70	28.6	133.4
7SMP-1 1/2-6T	1-1/2"	73.00	34.9	146.0
7SMP-2-6T	2"	85.70	41.3	171.4
7SMP-2 1/2-6T	2-1/2"	92.10	47.6	184.2
7SMP-3-6T	3"	98.40	54.0	196.8
7SMP-4-6T	4"	120.70	69.9	241.4



BPE TABLE #DT-27

## Croce / Cross

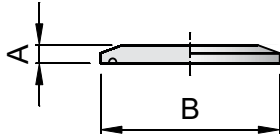
Code	Size	A	B
9MP-1/2-6T	1/2"	57.2	114.4
9MP-3/4-6T	3/4"	60.3	120.6
9MP-1-6T	1"	66.7	133.4
9MP-1-1/2-6T	1 1/2"	73.0	146.0
9MP-2-6T	2"	85.7	171.4
9MP-2-1/2-6T	2 1/2"	92.1	184.2
9MP-3-6T	3"	98.4	196.8
9MP-4-6T	4"	120.6	241.2



BPE TABLE #DT-18

## Tappo / Solid end cap

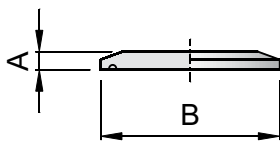
16AMP



BPE TABLE #DT-31

Code	Size	A	B
16AMP-3/4-6T	1/2" - 3/4"	6.3	25.0
16AMP-1-1/2-6T	1 - 1 1/2"	6.3	50.4
16AMP-2-6T	2"	6.3	63.9
16AMP-2-1/2-6T	2 1/2"	6.3	77.5
16AMP-3-6T	3"	6.3	90.9
16AMP-4-6T	4"	7.9	118.9
16AMP-6-6T	6"	11.1	166.7

16AMP

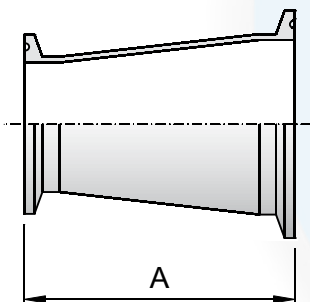


SANITARY

Code	Size	A	B
16AMP-8-6T	8"	11.1	217.7
16AMP-10-6T	10"	11.1	268.5
16AMP-12-6T	12"	14.3	319.3

## Riduzione concentrica / Concentric reducer

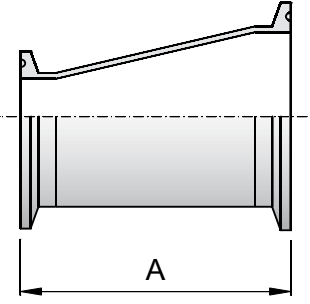
31-14MP



BPE TABLE #DT-21

Code	Size	A
31-14MP-3/4X1/2-6T	3/4" X 1/2"	50.8
31-14MP-1X1/2-6T	1" X 1/2"	63.5
31-14MP-1X3/4-6T	1" X 3/4"	50.8
31-14MP-1-1/2X1/2-6T	1 1/2" X 1/2"	88.9
31-14MP-1-1/2X3/4-6T	1 1/2" X 3/4"	76.2
31-14MP-1-1/2X1-6T	1 1/2" X 1"	76.2
31-14MP-2X1/2-6T	2" X 1/2"	139.7
31-14MP-2X3/4-6T	2" X 3/4"	127.0
31-14MP-2X1-6T	2" X 1"	127.0
31-14MP-2X1-1/2-6T	2" X 1 1/2"	76.2
31-14MP-2-1/2X1-6T	2 1/2" X 1"	177.8
31-14MP-2-1/2X1 1/2-6T	2 1/2" X 1 1/2"	127.0
31-14MP-2-1/2X2-6T	2 1/2" X 2"	76.2
31-14MP-3X1-6T	3" X 1"	228.6
31-14MP-3X1-1/2-6T	3" X 1 1/2"	177.8
31-14MP-3X2-6T	3" X 2"	127.0
31-14MP-3X2-1/2-6T	3" X 2 1/2"	76.2
31-14MP-4X1-6T	4" X 1"	333.4
31-14MP-4X1-1/2-6T	4" X 1 1/2"	282.6
31-14MP-4X2-6T	4" X 2"	231.8
31-14MP-4X2-1/2-6T	4" X 2 1/2"	181.0
31-14MP-4X3-6T	4" X 3"	130.2

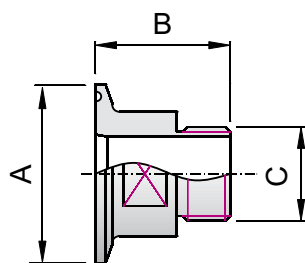
## Riduzione eccentrica / Eccentric reducer

Code	Size	A	32-14MP
32-14MP-3/4X1/2-6T	3/4" X 1/2"	50.8	
32-14MP-1X1/2-6T	1" X 1/2"	63.5	
32-14MP-1X3/4-6T	1" X 3/4"	50.8	
32-14MP-1-1/2X1/2-6T	1 1/2" X 1/2"	88.9	
32-14MP-1-1/2X3/4-6T	1 1/2" X 3/4"	76.2	
32-14MP-1-1/2X1-6T	1 1/2" X 1"	76.2	
32-14MP-2X1/2-6T	2" X 1/2"	139.7	
32-14MP-2X3/4-6T	2" X 3/4"	127.0	
32-14MP-2X1-6T	2" X 1"	127.0	
32-14MP-2X1-1/2-6T	2" X 1 1/2"	76.2	
32-14MP-2-1/2X1-6T	2 1/2" X 1"	177.8	
32-14MP-2 1/2X1 1/2-6T	2 1/2" X 1 1/2"	127.0	
32-14MP-2-1/2X2-6T	2 1/2" X 2"	76.2	
32-14MP-3X1-6T	3" X 1"	228.6	
32-14MP-3X1-1/2-6T	3" X 1 1/2"	177.8	
32-14MP-3X2-6T	3" X 2"	127.0	
32-14MP-3X2-1/2-6T	3" X 2 1/2"	76.2	
32-14MP-4X1-6T	4" X 1"	333.4	
32-14MP-4X1-1/2-6T	4" X 1 1/2"	282.6	
32-14MP-4X2-6T	4" X 2"	231.8	
32-14MP-4X2-1/2-6T	4" X 2 1/2"	181.0	
32-14MP-4X3-6T	4" X 3"	130.2	

BPE TABLE #DT-21



## Adattatore maschio / Male adapter



SANITARY

21MP	Code	Size	A	B	C (*)
	21MP-15-1/2-1/8-6T	1/2"	25	43	1/8
	21MP-15-1/2-1/4-6T	1/2"	25	43	1/4
	21MP-15-1/2-3/8-6T	1/2"	25	43	3/8
	21MP-15-1/2-1/2-6T	1/2"	25	43	1/2
	21MP-15-1/2-3/4-6T	1/2"	25	43	3/4
	21MP-15-3/4-3/8-6T	3/4"	25	43	3/8
	21MP-15-3/4-1/2-6T	3/4"	25	43	1/2
	21MP-15-3/4-3/4-6T	3/4"	25	43	3/4
	21MP-15-3/4-1-6T	3/4"	25	43	1
	21MP-15-1-1/8-6T	1"	50.4	38	1/8
	21MP-15-1-1/4-6T	1"	50.4	38	1/4
	21MP-15-1-3/8-6T	1"	50.4	38	3/8
	21MP-15-1-1/2-6T	1"	50.4	38	1/2
	21MP-15-1-3/4-6T	1"	50.4	38	3/4
	21MP-15-1-1-6T	1"	50.4	38	1
	21MP-15-1-1/2-3/4-6T	1 1/2"	50.4	38	3/4
	21MP-15-1-1/2-1-6T	1 1/2"	50.4	38	1
	21MP-15-1 1/2-1 1/4-6T	1 1/2"	50.4	38	1 1/4
	21MP-15-1 1/2-1 1/2-6T	1 1/2"	50.4	38	1 1/2
	21MP-15-1-1/2-2-6T	1 1/2"	50.4	38	2
	21MP-15-2-3/4-6T	2"	64	38	3/4
	21MP-15-2-1-6T	2"	64	38	1
	21MP-15-2-2-6T	2 1/2"	77.5	50	2
	21MP-15-2-1-1/4-6T	2 1/2"	77.5	50	1 1/4
	21MP-15-2-1-1/2-6T	2 1/2"	77.5	50	1 1/2
	21MP-15-2-1/2-2-6T	2 1/2"	77.5	50	2 1/2
	21MP-15-3-3-6T	3"	90.9	50	3
	21MP-15-4-4-6T	4"	118.9	50	4

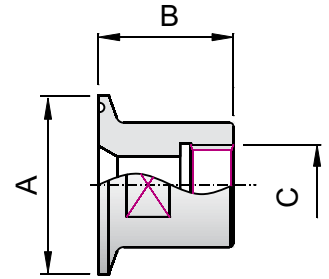
(\*) Filettatura Gas secondo UNI-ISO228

(\*) Gas Thread according to UNI-ISO228



# Adattatore femmina / Female adapter

Code	Size	A	B	C <sup>(*)</sup>
22MP-15-1/2-1/8-6T	1/2"	25	43	1/8
22MP-15-1/2-1/4-6T	1/2"	25	43	1/4
22MP-15-1/2-3/8-6T	1/2"	25	43	3/8
22MP-15-1/2-1/2-6T	1/2"	25	43	1/2
22MP-15-3/4-1/4-6T	3/4"	25	43	1/4
22MP-15-3/4-3/8-6T	3/4"	25	43	3/8
22MP-15-3/4-1/2-6T	3/4"	25	43	1/2
22MP-15-3/4-3/4-6T	3/4"	25	43	3/4
22MP-15-1-1/8-6T	1"	50.4	45	1/8
22MP-15-1-1/4-6T	1"	50.4	45	1/4
22MP-15-1-3/8-6T	1"	50.4	45	3/8
22MP-15-1-1/2-6T	1"	50.4	45	1/2
22MP-15-1-3/4-6T	1"	50.4	45	3/4
22MP-15-1-1-6T	1"	50.4	45	1
22MP-15-1-1/2-1/2-6T	1 1/2"	50.4	45	1/2
22MP-15-1-1/2-3/4-6T	1 1/2"	50.4	45	3/4
22MP-15-1-1/2-1-6T	1 1/2"	50.4	45	1
22MP-15-11/2-11/4-6T	1 1/2"	50.4	45	1 1/4
22MP-15-11/2-11/2-6T	1 1/2"	50.4	45	1 1/2
22MP-15-2-1/2-6T	1 1/2"	50.4	45	1/2
22MP-15-2-3/4-6T	2"	64	50	3/4
22MP-15-2-1-6T	2"	64	50	1
22MP-15-2-2-6T	2"	64	50	2
22MP-15-2-1-1/4-6T	2 1/2"	77.5	50	1/4
22MP-15-2-1-1/2-6T	2 1/2"	77.5	50	1 1/2
22MP-15-21/2-21/2-6T	2 1/2"	77.5	50	2 1/2
22MP-15-3-3-6T	3"	90.9	50	3
22MP-15-4-4-6T	4"	118.9	50	4



SANITARY

(\*) Filettatura Gas secondo UNI-ISO228

(\*) Gas Thread according to UNI-ISO228



# Portagomma clamp / Rubber hose adapter

14MPHR

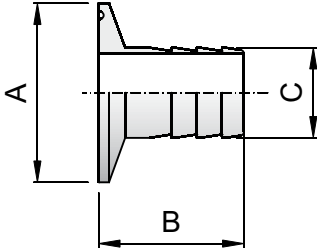
Code

Size

A

B

C



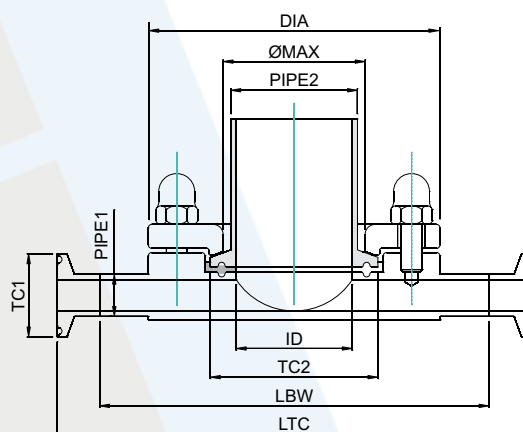
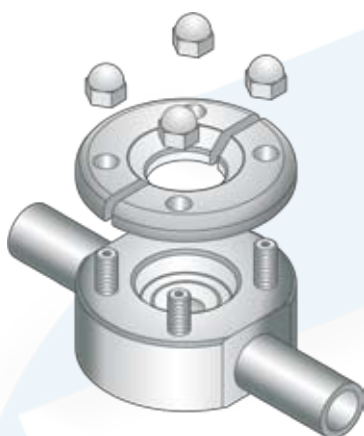
SANITARY

14MPHR-1/2-6T	1/2"	25	45	12,7
14MPHR-1/2X5-6T	1/2"	25	45	5
14MPHR-1/2X6-6T	1/2"	25	45	6
14MPHR-1/2X7-6T	1/2"	25	45	7
14MPHR-1/2X8-6T	1/2"	25	45	8
14MPHR-1/2X10-6T	1/2"	25	45	10
14MPHR-3/4-6T	3/4"	25	45	19.05
14MPHR-3/4X13-6T	3/4"	25	45	13
14MPHR-3/4X15-6T	3/4"	25	45	15
14MPHR-3/4X17-6T	3/4"	25	45	17
14MPHR-3/4X20-6T	3/4"	25	45	20
14MPHR-1-6T	1"	50.4	45	25.4
14MPHR-1X6-6T	1"	50.4	45	6
14MPHR-1X7-6T	1"	50.4	45	7
14MPHR-1X8-6T	1"	50.4	45	8
14MPHR-1X9-6T	1"	50.4	45	9
14MPHR-1X10-6T	1"	50.4	45	10
14MPHR-1X12-6T	1"	50.4	45	12
14MPHR-1X13-6T	1"	50.4	45	13
14MPHR-1X14-6T	1"	50.4	45	14
14MPHR-1X15-6T	1"	50.4	45	15
14MPHR-1X16-6T	1"	50.4	45	16
14MPHR-1X17-6T	1"	50.4	45	17
14MPHR-1X19-6T	1"	50.4	45	19
14MPHR-1-1/2-6T	1 1/2"	50.4	45	38.1
14MPHR-1-1/2X30-6T	1 1/2"	50.4	45	30
14MPHR-1-1/2X33-6T	1 1/2"	50.4	45	33
14MPHR-1-1/2X35-6T	1 1/2"	50.4	45	35
14MPHR-2-6T	2"	64	45	50.8
14MPHR-2-1/2-6T	2 1/2"	77.5	65	63.5
14MPHR-3-6T	3"	90.9	80	76.2
14MPHR-4-6T	4"	118.9	90	101.6



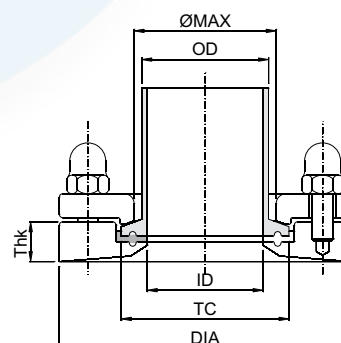
## Connessione TK In-Line / TK In-Line Connection

Size	TC 1	Pipe 1	TC 2	Pipe 2	ID	Ø max	DIA	LTC	LBW	Bolts
TK-LINE 3/4" X 1/2"	25.0	12.7 x 1.65	25.0	19.05 x 1.65	15.75	20.0	55.0	101.6	101.6	4 x M6
TK-LINE 3/4" X 3/4"	25.0	19.0 x 1.65	25.0	19.05 x 1.65	15.75	20.0	55.0	101.6	101.6	4 x M6
TK-LINE 1 1/2" X 1/2"	25.0	12.7 x 1.65	50.4	38.1 x 1.65	34.8	45.0	85.0	127.0	127.0	4 x M8
TK-LINE 1 1/2" X 3/4"	25.0	19.0 x 1.65	50.4	38.1 x 1.65	34.8	45.0	85.0	127.0	127.0	4 x M8
TK-LINE 1 1/2" X 1"	50.4	25.4 x 1.65	50.4	38.1 x 1.65	34.8	45.0	85.0	127.0	127.0	4 x M8
TK-LINE 1 1/2" X 1 1/2"	50.4	38.1 x 1.65	50.4	38.1 x 1.65	34.8	45.0	85.0	127.0	127.0	4 x M8
TK-LINE 2" X 1/2"	25.0	12.7 x 1.65	64.0	50.8 x 1.65	47.5	57.0	100.0	139.7	139.7	4 x M8
TK-LINE 2" X 3/4"	25.0	19.0 x 1.65	64.0	50.8 x 1.65	47.5	57.0	100.0	139.7	139.7	4 x M6
TK-LINE 2" X 1"	50.4	25.4 x 1.65	64.0	50.8 x 1.65	47.5	57.0	100.0	139.7	139.7	4 x M8
TK-LINE 2" X 1 1/2"	50.4	38.1 x 1.65	64.0	50.8 x 1.65	47.5	57.0	100.0	139.7	139.7	4 x M8
TK-LINE 2" X 2"	64.0	50.8 x 1.65	64.0	50.8 x 1.65	47.5	57.0	100.0	139.7	139.7	4 x M8



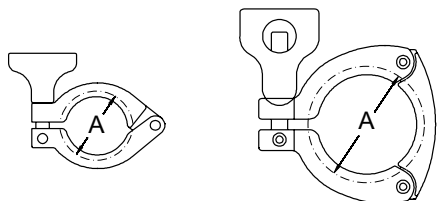
## Connessione TK per serbatoi / TK connection for tanks

Size	TC	ID	OD pipe	Ø max	DIA	Tk std	Tk 1	Tk 2	Tk 3	Bolts
TK-CONN-1/2"	25.0	9.4	12.7	20.0	55.0	15.0	25.0	38.0	51.0	4 x M6
TK-CONN-3/4"	25.0	15.75	19.0	20.0	55.0	15.0	25.0	38.0	51.0	4 x M8
TK-CONN-1"	50.4	22.1	25.4	45.0	85.0	17.0	25.0	38.0	51.0	4 x M8
TK-CONN-1 1/2"	50.4	34.8	38.1	45.0	85.0	17.0	25.0	38.0	51.0	4 x M8
TK-CONN-2"	64.0	47.5	50.8	57.0	100.0	17.0	25.0	38.0	51.0	4 x M8
TK-CONN-2 1/2"	77.5	60.2	63.5	71.0	112.0	17.0	25.0	38.0	51.0	4 x M8
TK-CONN-3"	91.0	72.9	76.2	85.0	130.0	20.0	25.0	38.0	51.0	4 x M8
TK-CONN-4"	119.0	97.6	101.6	113.0	170.0	20.0	25.0	38.0	51.0	4 x M8



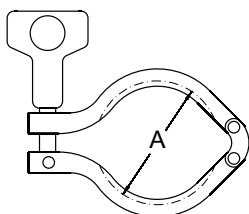
# Clamp / Clamp

## 13 MHHS Clamp



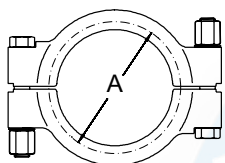
Code	Size	A	Service rating at 20°C bar	Service rating at 120°C bar
13MHH-S-3/4T	1/2 - 3/4"	28.6	151	82
13MHH-S-1-1/2T	1-1 1/2"	54	41	20
13MHH-S-2T	2"	67.4	37	19
13MHH-S-2-1/2T	2 1/2"	81	31	15
13MHH-S-3T	3"	94	24	12
13MHH-S-4T	4"	122	20	10

## 13 MHHM Clamp



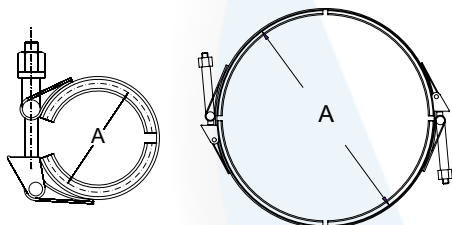
Code	Size	A	bar	bar
13MHHM-1-1/2T	1-1 1/2"	53.6	34	20
13MHHM-2T	2"	67	31	20
13MHHM-2-1/2T	2 1/2"	80.6	27	14
13MHHM-3T	3"	94	24	12
13MHHM-4T	4"	122	20	10

## 13 MHP Clamp



Code	Size	A	bar	bar
13MHP-1-1/2T	1-1 1/2"	52	103	82
13MHP-2T	2"	65.5	68	55
13MHP-2-1/2T	2 1/2"	79	68	55
13MHP-3T	3"	92.4	68	55
13MHP-4T	4"	120	55	41

## A13 MO Type: 1-6"/Type 2: 8-10-12



Code	Size	A
A13MO-6	6"	176
A13MO-8	8"	230
A13MO-10	10"	282
A13MO-12	12"	331

## 13MHHM



Code	Size	A
13MHHM-BB-3/4	3/4"	16
13MHHM-BB	1" - 4"	16
13MHHM-BL40	1" - 4"	40

### Informazioni Tecniche:

Valutazione delle prestazioni degli attacchi clamp (in bar)  
 13MHHM < bulloneria serrata a 2.8Nm >  
 13MHHS < bulloneria serrata a 2.8Nm >  
 13MHP < bulloneria serrata a 27.1Nm >

### Nota:

I test di valutazione delle prestazioni vengono effettuati con metodo idraulico, eseguendo l'installazione corretta dei raccordi con guarnizioni in EPDM.

### Finitura superficiale:

La finitura della superficie soddisfa i requisiti 3A per le applicazioni sanitarie standard e la tabella ASME BPE per l'industria bio-farmaceutica. La rugosità viene misurata in conformità alle norme ASME ANSI B46.1

### Technical information

Service rating for clamp connection unit (bar)  
 13MHHM < wing nut tightened to 2.8Nm >  
 13MHHS < wing nut tightened to 2.8Nm >  
 13MHP < wing nut tightened to 27.1Nm >

### Note:

Service rating tests are carried out by hydraulic method, proper installation of fittings and standard EPDM gaskets

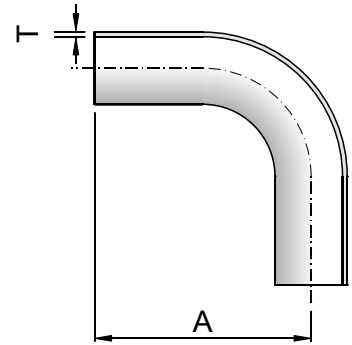
### Surface finish:

Surface finish conditions meet 3A requirements for standard sanitary applications as well as ASME-BPE table for Biopharm industry. Roughness readings are taken by profilometer as per ASME/ANSI B46.1



## Curva 90° / 90° Elbow

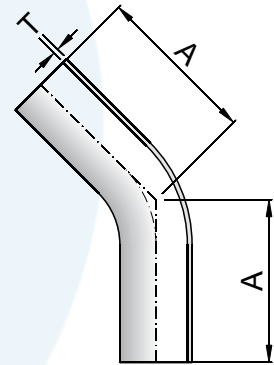
Code	Size	A	T	AL2S7
AL2S7-1/2-6L-B	1/2"	76.2	1.65	
AL2S7-3/4-6L-B	3/4"	76.2	1.65	
AL2S7-1-6L-B	1"	76.2	1.65	
AL2S7-1-1/2-6L-B	1-1/2"	95.3	1.65	
AL2S7-2-6L-B	2"	120.7	1.65	
AL2S7-2-1/2-6L-B	2-1/2"	139.7	1.65	
AL2S7-3-6L-B	3"	158.8	1.65	
AL2S7-4-6L-B	4"	203.2	2.11	



BPE TABLE #DT-7

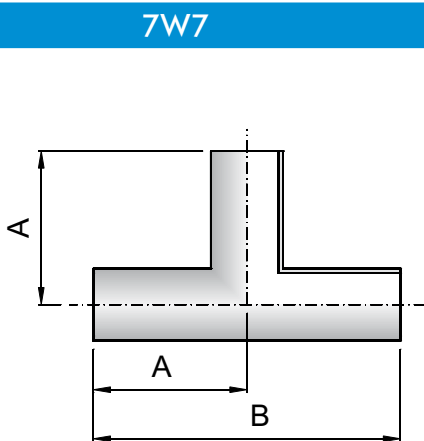
## Curva 45° / 45° Elbow

Code	Size	A	T	AL2KS7
AL2KS7-1/2-6L-B	1/2"	57.2	1.65	
AL2KS7-3/4-6L-B	3/4"	57.2	1.65	
AL2KS7-1-6L-B	1"	57.2	1.65	
AL2KS7-1-1/2-6L-B	1-1/2"	63.5	1.65	
AL2KS7-2-6L-B	2"	76.2	1.65	
AL2KS7-2-1/2-6L-B	2-1/2"	85.7	1.65	
AL2KS7-3-6L-B	3"	92.1	1.65	
AL2KS7-4-6L-B	4"	114.3	2.11	



BPE TABLE #DT-8

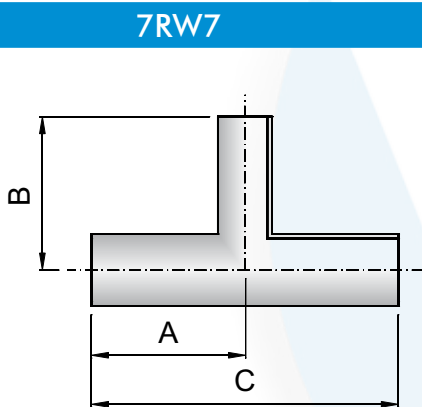
## "T" Saldabile / Tee weld end



BPE TABLE #DT-9

7W7	Code	Size	A	B
	7W7-1/2-6L-B	1/2"	47.6	95.2
	7W7-3/4-6L-B	3/4"	50.8	101.6
	7W7-1-6L-B	1"	54.0	108.0
	7W7-1 1/2-6L-B	1-1/2"	60.3	120.6
	7W7-2-6L-B	2"	73.0	146.0
	7W7-2 1/2-6L-B	2-1/2"	79.4	158.7
	7W7-3-6L-B	3"	85.7	171.4
	7W7-4-6L-B	4"	104.8	209.5

## "T" Ridotto saldabile / Reducing Tee weld end

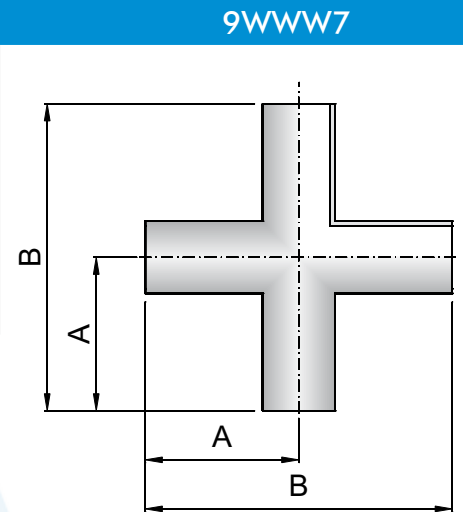


BPE TABLE #DT-10

7RW7	Code	Size	A	B	C
	7RW7-3/4X1/2-6L-B	3/4" X 1/2"	50.8	50.8	101.6
	7RW7-1X1/2-6L-B	1" X 1/2"	54.0	54.0	108.0
	7RW7-1X3/4-6L-B	1" X 3/4"	54.0	54.0	108.0
	7RW7-1 1/2X1/2-6L-B	1 1/2" X 1/2"	60.3	60.3	120.6
	7RW7-1 1/2X3/4-6L-B	1 1/2" X 3/4"	60.3	60.3	120.6
	7RW7-1 1/2X1-6L-B	1 1/2" X 1"	60.3	60.3	120.6
	7RW7-2X1/2-6L-B	2" X 1/2"	73.0	66.7	146.0
	7RW7-2X3/4-6L-B	2" X 3/4"	73.0	66.7	146.0
	7RW7-3X1/2-6L-B	3" X 1/2"	85.7	79.4	171.4
	7RW7-3X3/4-6L-B	3" X 3/4"	85.7	79.4	171.4
	7RW7-4X1/2-6L-B	4" X 1/2"	104.8	92.1	209.6
	7RW7-4X3/4-6L-B	4" X 3/4"	104.8	92.1	209.6

## Croce saldabile / Cross weld ends

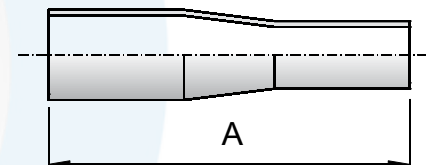
Code	Size	A	B
9WWW7-1/2-6L-B	1/2"	47.6	95.2
9WWW7-3/4-6L-B	3/4"	50.8	101.6
9WWW7-1-6L-B	1"	54.0	108.0
9WWW7-1 1/2-6L-B	1 1/2"	60.3	120.6
9WWW7-2-6L-B	2"	73.0	146.0
9WWW7-2 1/2-6L-B	2 1/2"	79.4	158.8
9WWW7-3-6L-B	3"	85.7	171.4
9WWW7-4-6L-B	4"	104.8	209.6



BPE TABLE #DT-9

## Riduzione concentrica / Concentric reducer

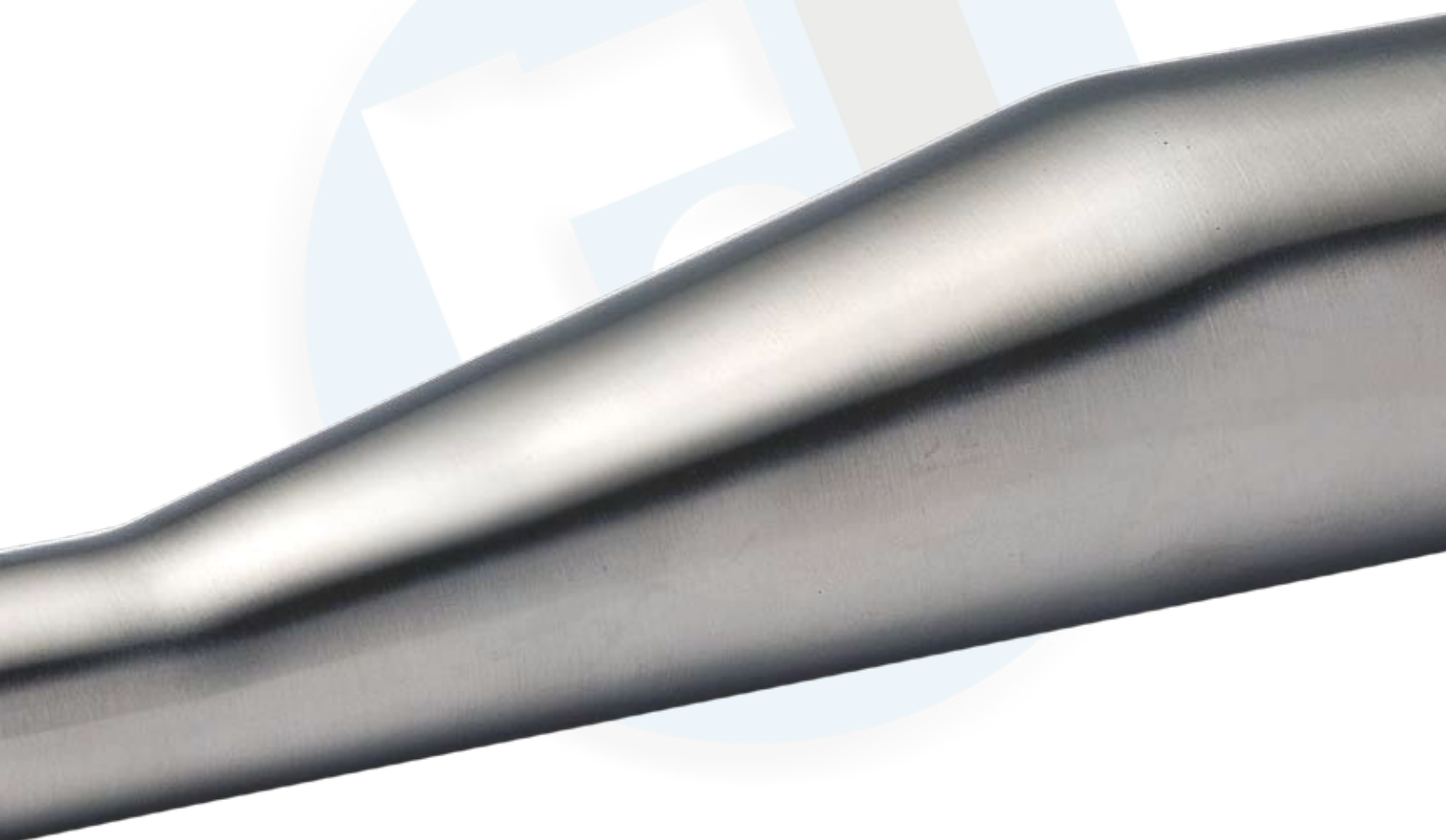
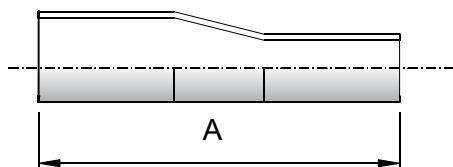
Code	Size	A
AL317-3/4X1/2-6L-B	3/4" X 1/2"	101.6
AL317-1X1/2-6L-B	1" X 1/2"	114.3
AL317-1X3/4-6L-B	1" X 3/4"	101.6
AL317-1 1/2X1/2-6L-B	1 1/2" X 1/2"	139.7
AL317-1 1/2X3/4-6L-B	1 1/2" X 3/4"	127.0
AL317-1 1/2X1-6L-B	1 1/2" X 1"	127.0
AL317-2X1/2-6L-B	2" X 1/2"	196.9
AL317-2X3/4-6L-B	2" X 3/4"	184.2
AL317-2X1-6L-B	2" X 1"	184.2
AL317-2X1 1/2-6L-B	2" X 1 1/2"	133.4
AL317-2 1/2X1-6L-B	2 1/2" X 1"	235
AL317-2 1/2X1 1/2-6L-B	2 1/2" X 1 1/2"	184.2
AL317-2 1/2X2-6L-B	2 1/2" X 2"	139.7
AL317-3X1 1/2-6L-B	3" X 1 1/2"	235
AL317-3X2-6L-B	3" X 2"	190.5
AL317-3X2 1/2-6L-B	3" X 2 1/2"	139.7
AL317-4X2-6L-B	4" X 2"	298.5
AL317-4X2 1/2-6L-B	4" X 2 1/2"	247.7
AL317-4X3-6L-B	4" X 3"	196.9



BPE TABLE #DT-11

## Riduzione eccentrica / Eccentric reducer

AL327	Code	Size	A
	AL327-3/4X1/2-6L-B	3/4" X 1/2"	101.6
	AL327-1X1/2-6L-B	1" X 1/2"	114.3
	AL327-1X3/4-6L-B	1" X 3/4"	101.6
	AL327-1 1/2X1/2-6LB	1 1/2" X 1/2"	139.7
	AL327-1 1/2X3/4-6LB	1 1/2" X 3/4"	127.0
	AL327-1 1/2X1-6L-B	1 1/2" X 1"	127.0
	AL327-2X1/2-6L-B	2" X 1/2"	196.9
	AL327-2X3/4-6L-B	2" X 3/4"	184.2
	AL327-2X1-6L-B	2" X 1"	184.2
	AL327-2X1 1/2-6L-B	2" X 1 1/2"	133.4
	AL327-2 1/2X1 1/2-6L-B	2 1/2" X 1 1/2"	184.2
	AL327-2 1/2X2-6L-B	2 1/2" X 2"	139.7
	AL327-3X1 1/2-6L-B	3" X 1 1/2"	235.0
	AL327-3X2-6L-B	3" X 2"	190.5
	AL327-3X2 1/2-6L-B	3 X 2 1/2"	139.7
	AL327-4X2-6L-B	4" X 2"	298.5
	AL327-4X2 1/2-6L-B	4" X 2 1/2"	247.7
	AL327-4X3-6L-B	4" X 3"	196.9



## Tubi inox per l'industria farmaceutica

### Caratteristiche:

- Tipo AISI 316L elettrounito, scordonato e trafilato, secondo specifiche ASTM A270
- I tubi sono costruiti e testati secondo ASTM A270 con tolleranza ASTM A269
- Esternamente marchiati con n° di colata per l'identificazione
- La finitura interna è di Ra <0,5 µm, esterna Ra <0,8 µm (elettrolucidatura su richiesta)
- Dopo la lavorazione meccanica i tubi sono passivati e risciacquati con acqua deionizzata e asciugati
- I tubi sono chiusi nelle estremità con tappi in plastica e protetti esternamente con film plastico
- La lunghezza standard nominale è di 6 m
- Test report (MTR) quali certificati di analisi chimica con n° di colata e prove di rugosità sono forniti su richiesta e devono essere richiesti al momento dell'ordine del tubo

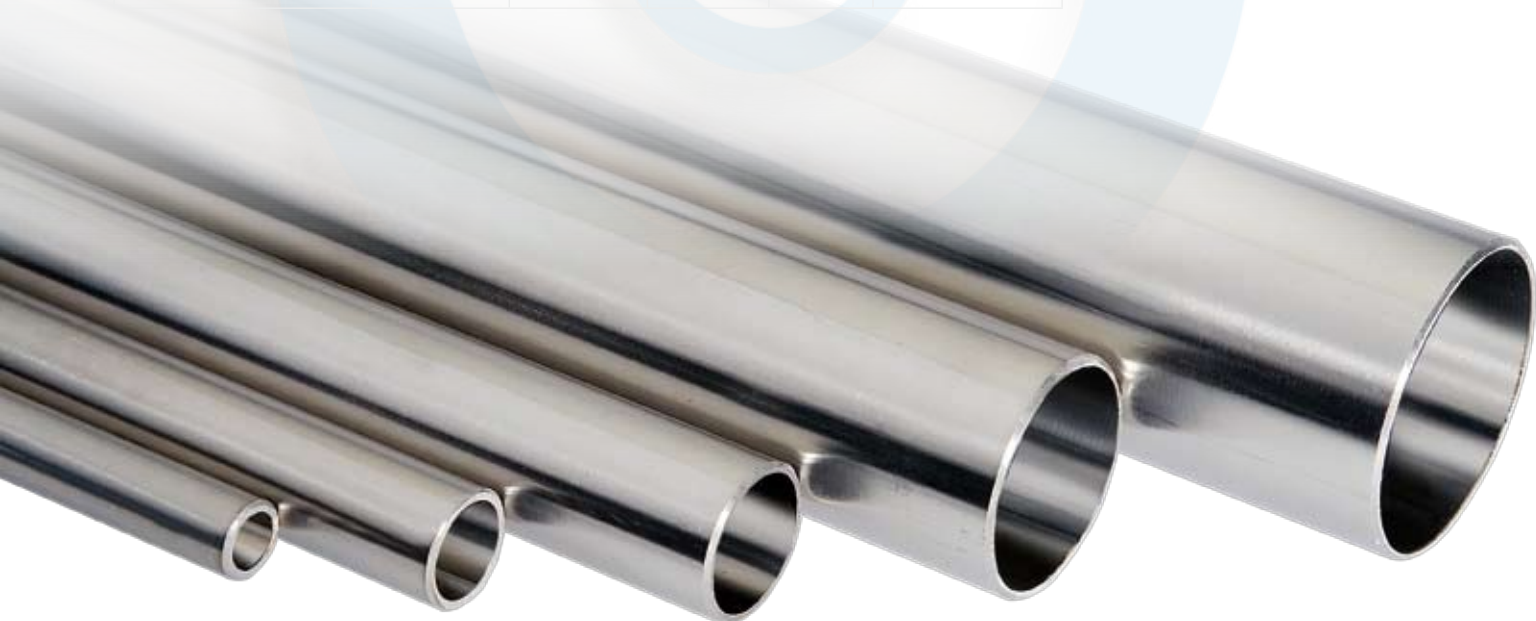
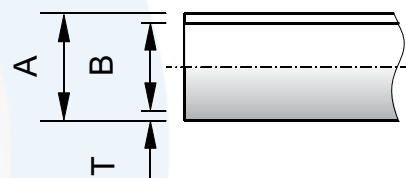
## Stainless steel tubing for pharmaceutical industries

### Characteristics:

- AISI 316L TIG welded, grounded and extruded, according to ASTM A270 specifications
- Tubing are manufactured and tested according to ASTM A270 tolerances A269
- Outside permanently marked with heat number for identification
- Inside finishing Ra <0,5 µm, outside finishing Ra <0,8 µm (electropolished on request)
- Tubing to be passivated and rinsed with deionized water after polishing
- Tubing to be end capped, paper or plastic sleeved and placed in nylon sheet
- Available in 6 meters nominal length
- Test report (MTR) like chemical analysis certificates with heat number and roughness test are supplied on request and have to be requested at order issue with the tubing

## Tubo / Tube

Code	Size	A	B	T	Weight Kg/m
SK6L50127-16	1/2"	12.7	9.4	1.65	0.45
SK6L50190-16	3/4"	19.05	15.7	1.65	0.71
RJ6L50254-16	1"	25.4	22.1	1.65	0.97
RJ6L50381-16	1 1/2"	38.1	34.8	1.65	1.49
RJ6L50508-16	2	50.8	47.5	1.65	2.02
RJ6L50635-16	2 1/2"	63.5	60.2	1.65	2.54
RJ6L50761-16	3	76.2	72.9	1.65	3.06
RJ6L51016-21	4	101.6	97.4	2.11	5.22
RJ6L51524-27	6	152.4	147	2.77	10.00



## Guarnizioni Clamp

### Linee guida:

Questa scheda è stata preparata accuratamente per aiutare a selezionare l'elastomero corretto utilizzato nelle tenute igienico sanitarie ad elevata purezza ove sono presenti acqua pura critica, fluidi di processo (sia a temperatura ambiente che caldi) e ambienti SIP. Lo scopo è quello di considerare condizioni, applicazioni e usi differenti per **determinare la guarnizione sanitaria più favorevole ad ogni applicazione**. I seguenti criteri vengono utilizzati per determinare i materiali sigillanti igienici corretti:

- Certificazione U.S. Pharmacopeia Class VI
- Criteri Citotossicità
- cfr. Titolo 21 Sezione 177.1550
- cfr. Titolo 21 Sezione 177.2600
- Tracciabilità: Lotto
- Certificazione: Lotto
- Norme ASME-BPE
- Norme USDA
- Norme sanitarie 3-A
- Current Good Manufacturing Practices (cGMP)
- Specifiche e dati del Costruttore
- Consultazione con vari utilizzatori farmaceutici
- Nessun ingrediente di origine animale

I materiali delle guarnizioni considerate sono Tuf-Steel® (PTFE/Acciaio Inossidabile), Tuf-Flex,® PTFE, Silicone (platino), FKM Fluoroelastomero, EPDM e Buna.

## Clamp gaskets

### Guidelines:

This information has been carefully prepared to help in selecting the correct elastomer utilized in high purity sanitary hygienic seals where critical pure water, process fluids (both ambient and hot) and SIP environments exist. The intention is to consider the different uses, applications and conditions to **determine the most favourable hygienic seal material for each application**. The following criteria are used to determine the correct hygienic seal materials:

- U.S. Pharmacopeia Class VI Certification
- Cytotoxicity Criteria
- CFR Title 21 Section 177.1550
- CFR Title 21 Section 177.2600
- Traceability: Lot and Batch
- Certification: Lot and Batch
- ASME-BPE Standards
- USDA Standards
- 3-A Sanitary Standards
- Current Good Manufacturing Practices (cGMP)
- Manufacturer data and specifications
- Consultation with various pharmaceutical users
- Animal Derived Ingredient Free

The gasket materials considered are Tuf-Steel® (PTFE/Stainless Steel), Tuf-Flex,® PTFE, Silicone (platinum), FKM Fluoroelastomer, EPDM and Buna.

## Identificazione codice colore

## Color coding-identification

Code	Size	Material	Color code	Type
42MP-U / 40MP-UW	1/2"-4"	BUNA	one red dot	1
40MOF-U	6"-12"			2
42MPE / 40MP-E	1/2"-4"	EPDM	three green dots	1
40MPF-E / 40 MOF-E	1"-12"			2
42MP-SFY / 40MP-SFY	1/2"-4"	FKM	one white, one yellow dot	1
40MPF-SFY / 40 MOF-SFY	1"-12"			2
42MP-X / 40MP-X	1/2"-4"	SILICONE PEROXIDE CURED	one pink dot	1
40MPF / 40MOF-X	1"-12"			2
42RX-PX / 40RX-PX	1/2"-4"	SILICONE PLATINUM CURED	no dot	1
40RX-OX	6"-12"			2
42MP-G / 40MP-G	1/2"-4"	PTFE	no dot	1
40MO-G	6"-12"			1
A42MP-GR / A40MP-GR	1/2"-4"	PTFE+FKM	one white, one yellow dot	3
A40MPGR-TF	1/2"-6"	TUF-FLEX	no dot	1
42MP-GTS / 40MP-GTS	1/2"-8"	TUFSTEEL	no dot	1

# Applicazione delle guarnizioni sanitarie

# Sanitary gaskets application

Guarnizioni commenti / Gasket comments	Flusso continuo / Continuous stream	Flusso intermittente / Intermittent Stream	Acqua pura Ambiente / Pure Water Ambient	Acqua pura calda / Pure Water Hot	Fluidi proc. ambiente / Proc. Fluids Ambient	Fluidi proc. caldi / Process Fluids Hot	Fluidi proc. variabili / Proc. Fluids Variable	Range temp. / Temp. Range
<b>Buna</b>	0	0	5	5	5	5	5	-34°C 93°C
Non consigliato per acidi forti e ozono / Not recommended for strong acid and ozone.								
<b>EPDM (peroxide cured)</b>	3	3	3	3	3	3	3	-34°C 148°C
Solo vapore a bassa pressione / Low pressure steam only.								
<b>FKM Fluoroelastomer</b>	3	2	2	2	2	2	2	-34°C 204°C
Accettabile per applicazioni di vapore / Acceptable for steam applications.								
<b>Silicone (platinum)</b>	2	2	2	2	2	2	1	-40°C 232°C
Temperatura bassa molto flessibile / Very flexible low temperature.								
<b>PTFE</b>	1	1	1	1	1	1	3	-73°C 260°C
Ampie variazioni di temperatura potrebbero causare perdite a $\Delta T$ / Wide temperature variations may cause leakage at $\Delta T$ .								
<b>Tuf-Flex®</b>	1	1	1	1	1	1	1	-73°C 176°C
Mantiene la tenuta con ampie variazioni di temperatura. Ha una lunga durata / Maintains seal with wide temperature variations. Has extended service life.								
<b>Tuf-Steel®</b>	1	1	1	1	1	1	1	-73°C 260°C
Mantiene la tenuta con ampie variazioni di temperatura. Ha una lunga durata / Maintains seal with wide temperature variations. Has extended service life.								

1=Eccellente 2=Buono 3=Accettabile 4=Marginale 5=Scarso 0=Non usare  
 1=Excellent 2=Good 3=Acceptable 4=Marginal 5=Poor 0=Do Not Use



# Reggitubi

# Support devices

**I nuovi sistemi di supporto serie RH & RHR** sono stati sviluppati per ottimizzare le condizioni d'igiene e semplicità nel montaggio dei tubi eliminando le sollecitazioni alle strutture portanti.

*The new RH & RHR support devices have been designed to ameliorate hygiene and help in assembling pipes avoiding any bearing structure stress.*

**Adeguamento automatico alle pendenze**  
L'anello di tensione permette al corpo di regolare l'inclinazione di 7° sulla verticale e di ruotare di 360° attorno al suo asse annullando le sollecitazioni tra il tubo ed il sostegno.

**Automatic Slope Adjustment**  
*Tension Ring connection allows hanger body to adjust 7° to tube slope and rotate 360° to relieve all unnecessary stresses between pipe and support*

**Telescopico – Regolabile**  
RH Series con steli permette, per una rapida X, Y e Z adeguamento dell'asse per facilità nel trovare la direzione del tubo, il elevazione e pendenza.

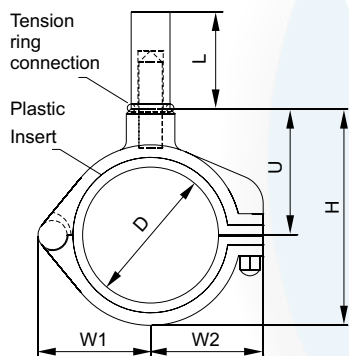
**Telescopic – Elevation Adjustment**  
*RH Series with Stanchion allows quick x, y and z axis adjustment for an easy location of the tube direction, elevation and slope.*

**Assemblati in un unico pezzo**  
Impediscono di perderne le parti in plastica e consentono una rapida installazione del tubo

**One Piece unit**  
*Assembled as a one-piece unit. No loose parts, quick identification and swift installation.*



## RH-PS



## Code

## Size

## D

## W1

## W2

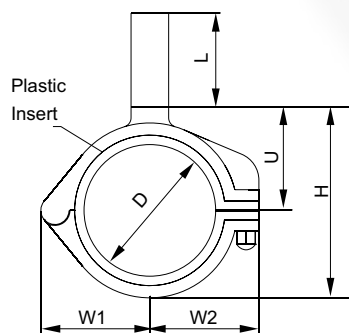
## H

## U

## L

RH-PS-050-T-1.40	1/2"	12,7	24	26	39	24	36
RH-PS-075-T-1.40	3/4"	19	27	29	45	27	36
RH-PS-100-T-1.40	1"	25,4	31	33	52	30	36
RH-PS-150-T-1.40	1 1/2"	38,1	37	40	65	39	36
RH-PS-200-T-1.40	2"	50,8	44	46	77	43	36
RH-PS-250-T-1.40	2 1/2"	63,5	51	52	92	52	36
RH-PS-300-T-1.40	3"	76,2	58	58	105	58	36
RH-PS-400-T-1.40	4"	101,6	70	71	131	71	36

## RHR-PS



## Code

## Size

## D

## W1

## W2

## H

## U

## L

RHR-PS-050-T-1.40	1/2"	12,7	24	26	42	28	36
RHR-PS-075-T-1.40	3/4"	19	27	29	49	31	36
RHR-PS-100-T-1.40	1"	25,4	31	33	56	34	36
RHR-PS-150-T-1.40	1 1/2"	38,1	37	40	69	42	36
RHR-PS-200-T-1.40	2"	50,8	44	46	81	47	36
RHR-PS-250-T-1.40	2 1/2"	63,5	51	52	96	55	36
RHR-PS-300-T-1.40	3"	76,2	58	58	106	59	36
RHR-PS-400-T-1.40	4"	101,6	70	71	137	78	36

Materiali/Materials: - Corpo AISI 304, a richiesta AISI 316 / Body AISI 304, on request AISI 316  
- Anello plastico: Polisulfone / Plastic ring: Polysulfone

\* Sono disponibili anche misure per tubi DN / Sizes for DN pipes are available.



# Sifoni di scarico

# Drain-Trap

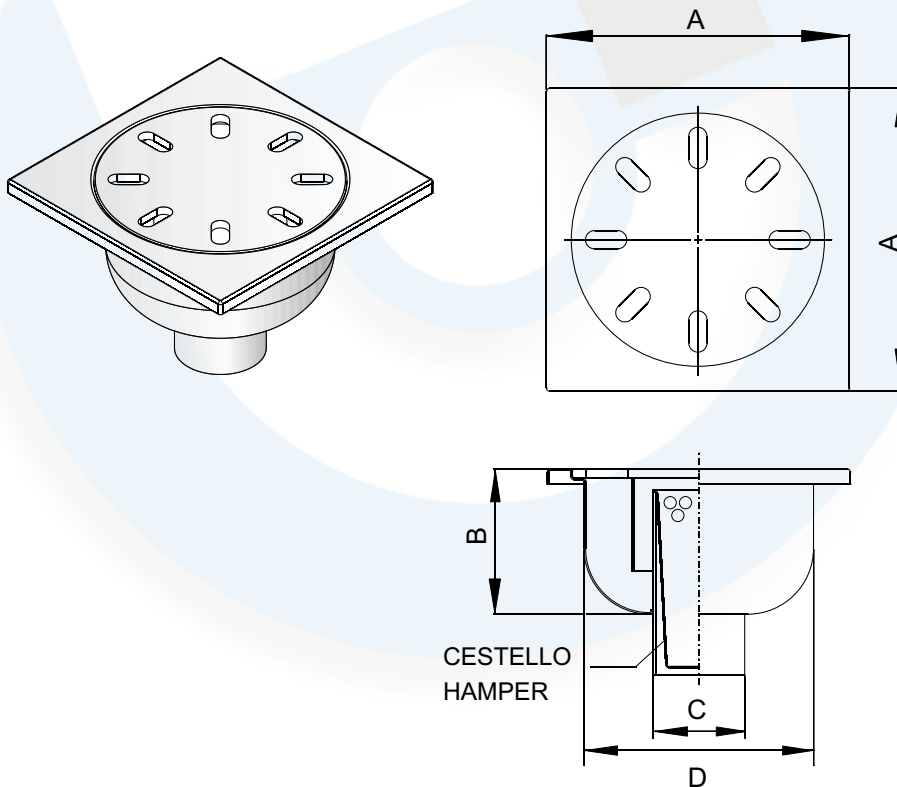
## Sifone di scarico in acciaio Inox AISI 304:

- A) Particolarmente indicati per l'industria alimentare chimica e farmaceutica
- B) Le dimensioni interne del sifone sono tali da permettere una buona accumulazione di detriti senza ricorrere a lavaggi frequenti
- C) L'accesso al fondo del sifone si ottiene per semplice sollevamento della piastra
- D) E' inodore per il sistema a sifone e quindi particolarmente adatto per ambienti sanitari
- E) Senza filettature di chiusura che possono provocare grippaggi
- F) Finitura esterna pallinata
- G) A richiesta con o senza cestello filtrante
- H) A richiesta coperchio cieco

## Drain-Trap in AISI 304 Stainless Steel:

- A) Specially indicated for pharmaceutical, chemical, food and dairy industry
- B) The internal drain-trap sizes allow a good waste accumulation without frequent cleaning
- C) The access to the drain-trap bottom is obtained only by plate raising
- D) It is odourless thanks to the siphon system and is suitable for sanitary environments
- E) It is without closing thread that can arouse seizing up
- F) External shot-peened finish
- G) On request with or without filtering hamper
- H) On request blind cover

Code	A mm	B mm	C mm	D mm	Portata (Kg) Carico Concentrato / Capacity (Kg) Concentrated load	Portata (Kg) Carico Distribuito / Capacity (Kg) Distributed load	Portata Scarico (L/1') / Exhaust capacity (L/1')
SS200X200	200	85	150	63	850	4600	46
SS250X250	250	115	195	76/80	850	6500	80
SS300X300	300	126	220	100/110	850	6500	130



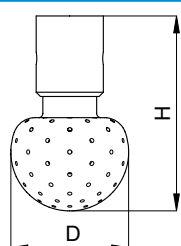
## Sfere di lavaggio / Spray-ball

### Sfere di lavaggio in Aisi 316 per lavaggio di serbatoi con connessioni a clip

- Diametri disponibili: 28-64-93 mm.
- Angoli di lavaggio disponibili:  
360°-180° in basso -180° in alto
- Pressione d'utilizzo raccomandata: 1 - 2,5 bar

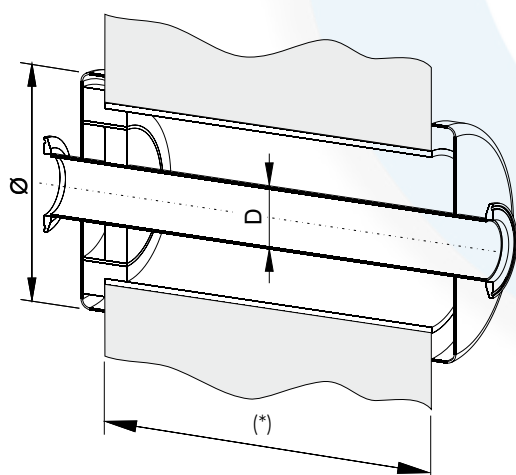
### Sprayballs for tanks in Aisi 316 with pipe clip connection

- Diameter available: 28-64-93 mm.
- Spraying angle available:  
360°-180° low -180° high
- Recommended operating pressure: 1 - 2,5 bar



Type	Spraying angle	Cleaning circle Ø (m)	D (mm)	H (mm)	Flow rate (m <sup>3</sup> /h) 1 bar	Pipe (mm.)
A05	360°	1,0 - 2,0	28	47	5,1	1/2" (12,7)
A05-1.0	360°	0,8 - 1,5	28	47	2,8	1/2" (12,7)
A1-1.0	360°	1,5 - 2,5	64	84	3	1" (25,4)
A1-1.5	360°	1,8 - 3,0	64	84	7	1" (25,4)
A1	360°	2,0 - 3,0	64	84	9,8	1" (25,4)
A1-1	360°	2,5 - 3,5	64	84	12,8	1" (25,4)

## Passapareti sterili / Crosswall



Code	Size	D	Ø
PP1/2	1/2"	12,7	110
PP3/4	3/4"	19	110
PP1	1"	25,4	110
PP1-1/2	1 1/2"	38,1	110
PP2	2"	50,8	130
PP2-1/2	2 1/2"	63,5	170
PP3	3"	76,2	185
PP4	4"	101,6	195

(\* Nota: in fase d'ordine indicare lo spessore del muro.  
Note: in course of order please indicate the wall thickness.

## Pezzi speciali a disegno

**Realizzazioni personalizzate sviluppate per il vostro processo.**

- Dimensioni 1/2" - 12" diametro esterno del tubo
- Finiture lucidate fino a rugosità < 0,2 µm.

Tecnox ha molteplici possibilità di costruire prodotti unici "fatti su misura" nel progetto e nelle specifiche. Abbiamo aree e persone dedicate alla produzione con esperienza pluriennale per garantirvi che le vostre specifiche vengano soddisfatte. Nel complesso mercato di oggi, abbiamo la versatilità e le conoscenze per costruire prodotti specialistici da utilizzare tanto nell'industria quanto nei sistemi ad elevata purezza.

- Foratura
- Satinatura
- Taglio
- Calandratura (raggio standard) tangenti e configurazioni uniche
- Saldatura
- Lucidatura – manuale o automatica
- Elettrolucidatura
- Passivazione
- Marcatura

Tutta questa gamma di servizi interni ci contraddistingue e ci permette di avere il totale controllo garantendo prodotti di qualità e consegne puntuali qualsiasi sia la vostra richiesta.

## Custom fabrications

**Tailor-made realizations designed for your process.**

- Sizes 1/2" – 12" Tube OD
- Finishes Unpolished – 10Ra Max.

Tecnox Products have extensive capabilities to manufacture unique products with "tailor-made" design and specifications. We have dedicated production cells and people with years of experience to ensure your specifications are met.

In today's complex market we have the versatility and knowledge to manufacture specialty products to use in markets ranging from industrial to high purity.

- Drilling
- Milling
- Cutting
- Bending (standard radius) unique tangents and configurations
- Welding
- Polishing - Manual handcrafted or Automatic
- Electropolishing
- Passivation
- Marking

All of these in-house capabilities sets us aside from others and gives us the total control to ensure quality products and on-time deliveries whatever the demand may be.

