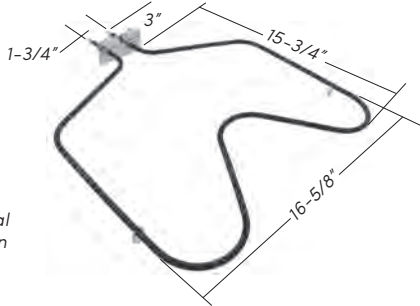


RANGE

BAKE ELEMENT

308180

2600/1950 Watts
240/208 Volts

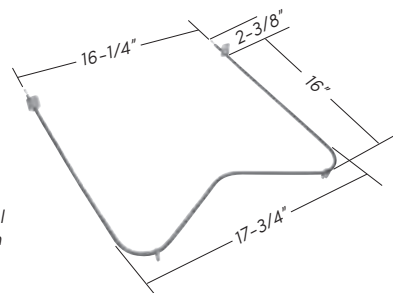


.250" male terminal
push-in connection

BAKE ELEMENT

4364349

2600/1950 Watts
240/208 Volts

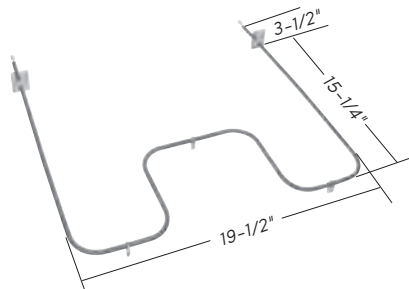


.250" male terminal
push-in connection

BAKE ELEMENT

74003019

2100/2800 Watts
240/208 Volts

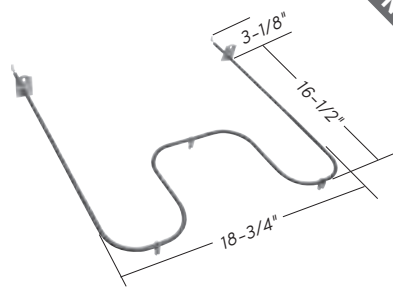


.250" male terminal
push-in connection

BAKE ELEMENT

74003039

2800/2100 Watts
240/208 Volts

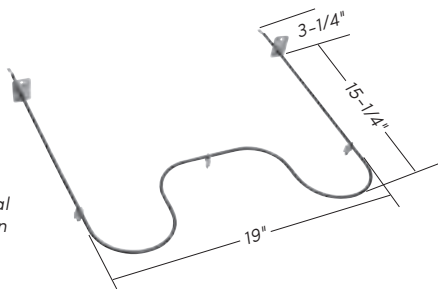


90 degree
.250" male terminal
push-in connection

BAKE ELEMENT

74010750

2585/1930 Watts
240/208 Volts

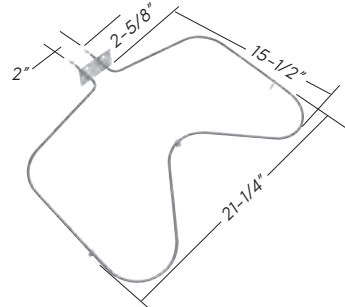


.250" male terminal
push-in connection

BAKE ELEMENT

9758519

2400 Watts
240 Volts

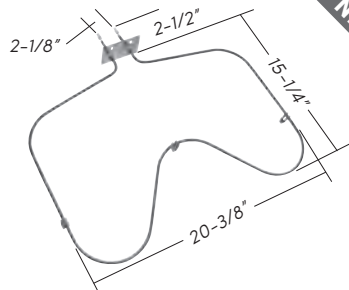


.250" male terminal
push-in connection

BAKE ELEMENT

9758541

2400/1800 Watts
240/208 Volts

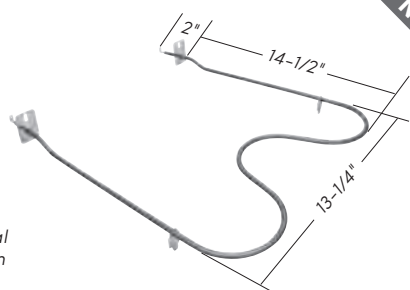


.250" male terminal
push-in connection

BAKE ELEMENT

W10163272

1800 Watts
240 Volts

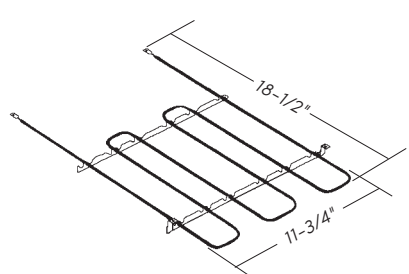


90 degree
.250" male terminal
push-in connection

BROIL ELEMENT

326795

3000/2250 Watts
240/208 Volts

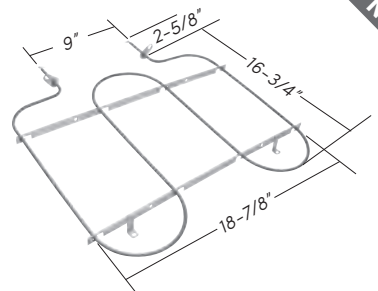


.250" male terminal
push-in connection

BROIL ELEMENT

9757340

3400/2550 Watts
240/208 Volts



screw-in connection

RANGE

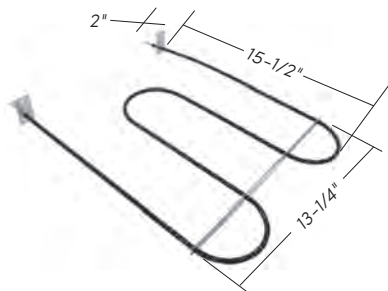
BROIL ELEMENT

Y07431100

1800/1350 Watts
240/208 Volts



.250" male terminal
push-in connection



BROILER PAN & GRID

4396923

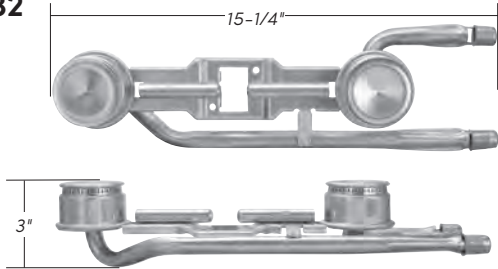
Pan:
12-1/2" wide
16" deep
Grid:
12-3/4" wide
15-3/4" deep



BURNER

74003332

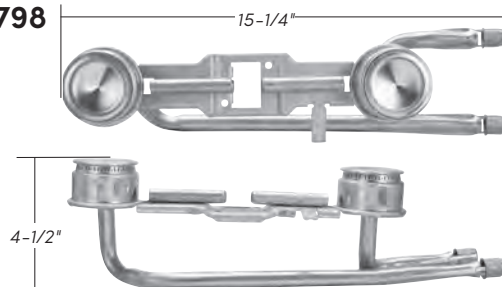
Double



BURNER

W10119798

Double



BURNER

3412D02409

Sealed
Black



Includes spark igniter

BURNER

3412D02426

Sealed
Gray



Includes spark igniter

BURNER

98004410

Sealed
3-1/4" diameter



Used with burner cap #98005518

BURNER

98017537

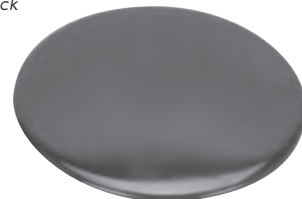
Sealed
4" diameter



BURNER CAP

98005518

3-1/8" diameter
Black



Used with sealed burner #98004410

BURNER CAP

98017461

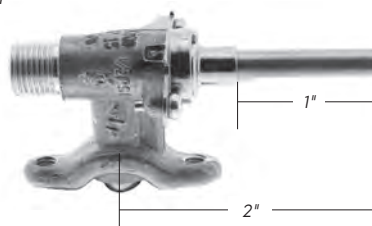
3" diameter
Black



BURNER VALVE

W10141709

270° shaft rotation



RANGE

CLOCK

W10312659



DRIP PANS

308648K

6"



308649K

8"



Slot

DRIP PANS

3150246

6"



2 Slots

3150247

8"



DRIP PANS

W10196406RW

6"



2 Slots

W10196405RW

8"



DOOR GASKET

4371128

Formed U-Shaped
51" overall length

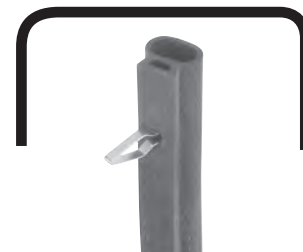


Has 12 retaining clips
Used on 30" ranges

DOOR GASKET

7212P04360

Formed U-Shaped
53" overall length



Has 12 retaining clips

DOOR GASKET

W10129032

Formed U-Shaped
54" overall length



Has 12 retaining clips

DOOR GASKET

4364084 15-3/4" overall length

Used as top gasket on 20" ranges
Used as side gasket on 30" ranges

Y07623603 13-3/4" overall length
Used as side gasket on 20, 24, 30" & 36" ranges

Stretch Seal



DOOR HANDLE

3195263

27" overall length
19-1/4" on center holes
White



All parts sold separately

3196143
Spacer



3196163
Screw



DOOR HANDLE

3195704

27" overall length
19-1/4" on center holes
Black



All parts sold separately

3196143
Spacer



3196163
Screw



RANGE

ADMIRAL • AMANA • CALORIC

WHIRLPOOL

GLENWOOD • HARDWICK • IMPERIAL • MAGIC CHEF • MAYTAG • ROPER • SUNRAY • WELBLIT

DOOR HANDLE

3405184

5-3/8" wide
2-1/4" deep
White



DOOR HANDLE

74001820

12-1/8" overall length
Chrome



74005232

Spacer

All parts sold separately

DOOR HINGE

98006897

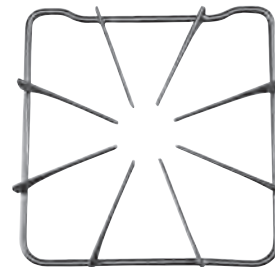


Interchangeable left or right

GRATE

2003X03000

8-3/4" x 8-7/8"
1-1/2" high



IGNITER

9758079

Burner Spark

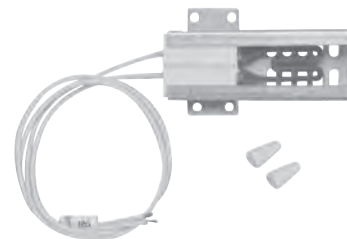


NEW

IGNITER

814269

Oven Glow
18-1/4" lead wires
Flat type



Includes (2) porcelain wire nuts
Has stripped wire ends

IGNITER

4342528

Oven Glow
8-1/2" lead wires
Round "carborundum" type



Has stripped wire ends

IGNITER

12400035

Oven Glow
8" lead wires
Flat type

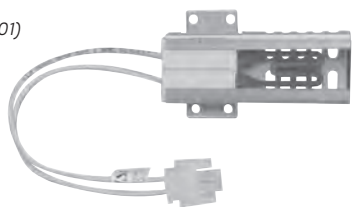


Includes: insulation, heat shield, wire nuts & wire extension
Has quick disconnect attached with (2) female pin connectors

IGNITER

74007498

Oven Glow
(factory id #223C3381G001)
7" lead wires
Flat type



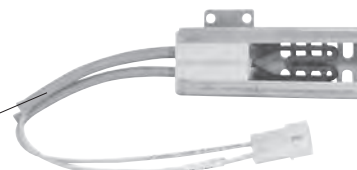
Has quick disconnect attached with (2) female pin connectors

IGNITER

98005652

Oven Glow
10" lead wires
Flat type

3-1/2" of heavy duty fiberglass insulation



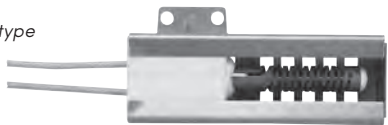
Has quick disconnect attached with (2) male pin connectors

RANGE

IGNITER

W10140611

Oven Glow
17-3/4" lead wires
Round "carborundum" type



NEW

Includes (2) porcelain wire nuts
Has stripped wire ends



IGNITER

8053720

Top Burner Spark
42" lead wires
Right front
.110" female terminal end



IGNITER

8523793

Top Burner Spark



NEW

IGNITERS

98014514 25-3/4" lead wires

W10209656 30" lead wires

W10209657 20" lead wires

Top Burner Spark
.110" female terminal end



W10278150

Clip



IGNITER

7432P01560

Top Burner Spark
56" lead wires
.110" female terminal end



NEW

INFINITE SWITCH

3148952

(factory id #NL811701)
Used with 6" elements
5.4 - 7.8 amps



Spring clip on shaft

Current sensing type

INFINITE SWITCH

3149400

(factory id #KS812608)
(factory id #KS812705)
(factory id #NL812639)
Used with 8" elements
8.9 - 11 amps



Spring clip on shaft

Current sensing type

INFINITE SWITCH

3149404

(factory id #KS811411)
(factory id #NL811440)
Used with 6" elements
5.2 - 6.6 amps



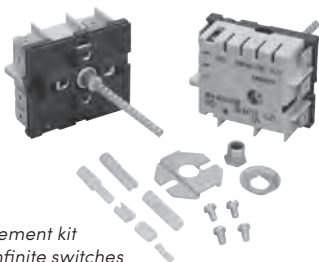
Spring clip on shaft

Current sensing type

INFINITE SWITCH

4391989

(factory id #INF240PX803)
(factory id #INF240PX1002)
6" or 8"
13 amp
Push-to-turn style
New UL double line break
specification



New Invensys/Robertshaw replacement kit
for various voltage sensing type infinite switches
Voltage sensing type

INFINITE SWITCHES

74002328

(factory id #KS811436)
Used with 6" elements
5.2 - 6.6 amps

W10179654

(factory id #KS812633)
(factory id #NL812672)
Used with 8" elements
8.9 - 11 amps



Current sensing type

RANGE

ADMIRAL • AMANA • CALORIC

WHIRLPOOL

GLENWOOD • HARDWICK • IMPERIAL • MAGIC CHEF • MAYTAG • ROPER • SUNRAY • WELBLIT

INFINITE SWITCH

7403P23960

(factory id #KS812616)
(factory id #NL812616)
(factory id #7403P372-60)
Used with 8" elements
8.9 - 11 amps



Current sensing type

INFINITE SWITCH

74011243

(factory id #7450P020-60)
(factory id #50-59079-094)
13 amps



Voltage sensing type

Spring clip on shaft

KNOBS

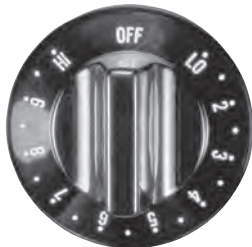
"D" position is when knob is viewed from the back in the OFF position

7737P03060

Electric Infinite
Flush shaft



"D" position



74003280

Electric Thermostat
Flush shaft



"D" position



KNOBS

Y0310526

Electric Infinite
Flush shaft



"D" position



Y0310527

Electric Thermostat
Flush shaft



"D" position



KNOBS

74002353

Gas Burner
3/8" extended shaft



.256"

"D" position



Used on electric ignition models

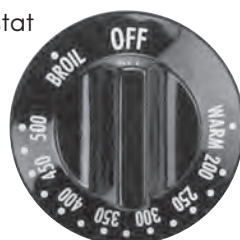
74002352

Gas Thermostat
Flush shaft



.256"

"D" position



KNOB

3181304

Gas Burner
3/4" extended shaft



.256"

"D" position



KNOBS

74002497

Gas Burner
1/2" extended shaft



.256"

"D" position



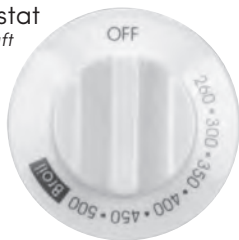
74010132

Gas Thermostat
7/8" extended shaft



.340"

"D" position



KNOB

4364479

Gas Burner
Flush shaft
2" diameter



.256"

"D" position



RANGE

KNOBS

"D" position is when knob is viewed from the back in the OFF position

98006102

Gas Burner
Red marking on grip
1/8" extended shaft
2-1/8" diameter

 .256"
"D" position



98008321

Gas Thermostat
Red marking on grip
7/16" extended shaft
2-1/8" diameter

 .256"
"D" position



74011408

Gas Burner
1/2" extended shaft

 .256"
"D" position



KNOB

8273115

Gas Burner
1/8" extended shaft

 .256"



NEW

KNOB

7737P24560

Gas Burner
1/2" extended shaft

 .256"
"D" position



NEW

KNOB

W10370189

Gas Burner
1/8" extended shaft

 .256"
"D" position



NEW

KNOB

W10614597

Gas Burner
1/8" extended shaft

 .256"
"D" position



NEW

KNOB

4315517

Gas Thermostat
Flush shaft
2-1/4" diameter

 .340"
"D" position



KNOB

98008444

Gas Thermostat
3/8" extended shaft
Red notch on top

 .256"
"D" position



ORIFICE FITTING ASSEMBLY

5187M02660

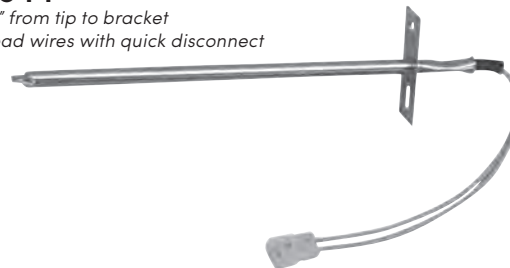


NEW

OVEN SENSOR

8053344

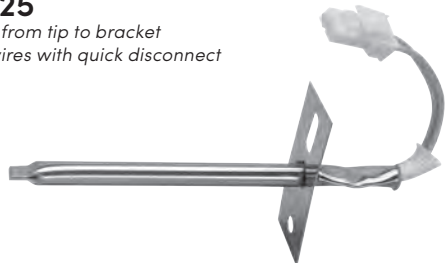
Probe: 6" from tip to bracket
Has 7" lead wires with quick disconnect



OVEN SENSOR

W10131825

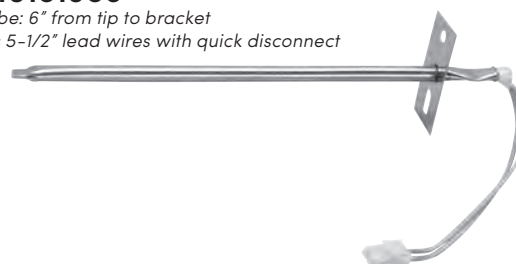
Probe: 2-7/8" from tip to bracket
Has 3" lead wires with quick disconnect



OVEN SENSOR

W10181986

Probe: 6" from tip to bracket
Has 5-1/2" lead wires with quick disconnect



NEW

RANGE

ADMIRAL • AMANA • CALORIC

WHIRLPOOL

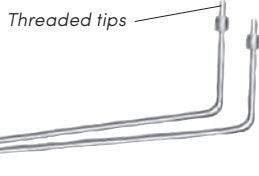
GLENWOOD • HARDWICK • IMPERIAL • MAGIC CHEF • MAYTAG • ROPER • SUNRAY • WELBLIT

PILOT

74002426

Dual Top
17" overall length

Screw in mount



4371101
Pilot Shield



4371101
Pilot Cup

PILOT

74010141

Includes thermocouple



W10155906

Thermocouple
Also sold separately

PILOT

W10085400

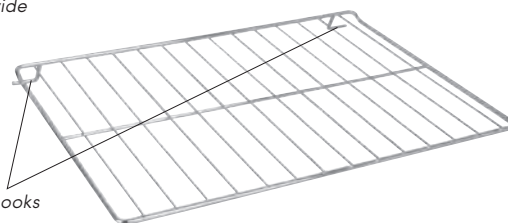


NEW

RACK

3185641

21-7/8" wide
16" deep



Has 2 hooks

RACK

7801P03060

21-7/8" wide
15-3/4" deep

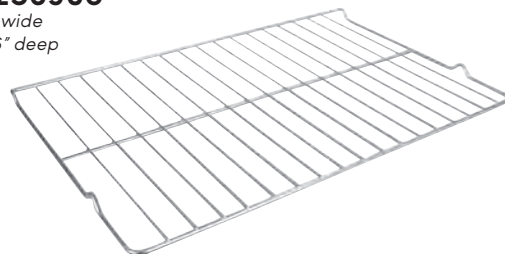


Used on 30" models

RACK

W10256908

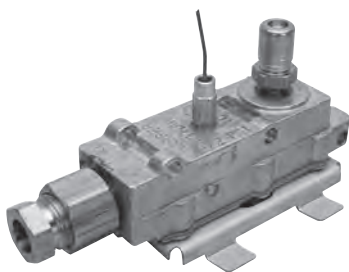
24-1/8" wide
15-13/16" deep



SAFETY VALVE

4157094

(factory id #5817H0003)
(factory id #74545-00)
3/8" inlet



Includes mounting bracket

SAFETY VALVE

4364168

(factory id #5817G0100)
(factory id #5817G0119)
3/8" inlet



Includes mounting bracket

SAFETY VALVE

74002428

3/8" inlet



NEW

Includes mounting bracket

SAFETY VALVE

98014893

3.03 - 3.3 VAC
3.3 - 3.6 amp



Includes mounting bracket
Has (2) .250" male terminals
Has extended brass angled orifice fitting

RANGE

SEALED BURNER ELECTRODE

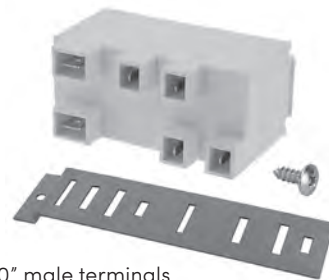
7432P10960



NEW

SPARK MODULE

12001596 4 + 0



Includes bracket & screw
Module has (2) .250" & (4) .110" male terminals

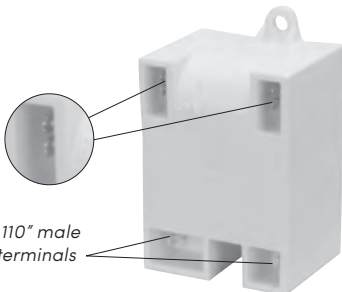
SPARK MODULE

1430322 2 + 0

(factory id #7431P006-60)

(factory id #6520G)

Has (2) .110" male terminals & universal split terminal design suitable for .110", .187" & .250" push on wiring



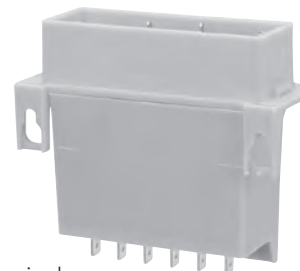
.110" male terminals

SPARK MODULE

31829401 2 + 1

(factory id #7087)

(factory id #DG189)



Has (6) .250" & (2) .110" male terminals

SPARK MODULE

4364047 2 + 1

(factory id #6513)

(factory id #977)



Has (6) .250" & (3) .110" male terminals

SPARK MODULE

4364409 2 + 1

(factory id #6549)



Has (6) .250" & (4) .110" male terminals

SPARK MODULE

6610341 4 + 0

(factory id #BF-50044.55)

(factory id #EI-S4)



Has (2) .250" & (4) .110" male terminals

SPARK MODULE

74004282 2 + 1

(factory id #U-67320-96) Old style

(factory id #7431P043-60) Old style

(factory id #7431P055-60)

(factory id #26347071)



Has (2) .250" & (2) .187" male terminals

SPARK MODULE

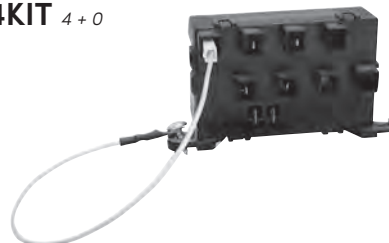
98017954 4 + 0



Has (2) .250" & (4) .110" male terminals

SPARK MODULE

98017954KIT 4 + 0



Includes screw & ground strap
Has (2) .250" & (5) .110" male terminals

NEW

NEW

RANGE

ADMIRAL • AMANA • CALORIC

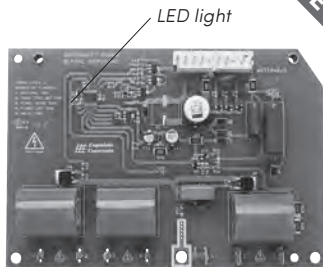
WHIRLPOOL

GLENWOOD • HARDWICK • IMPERIAL • MAGIC CHEF • MAYTAG • ROPER • SUNRAY • WELBLIT

SPARK MODULE CIRCUIT BOARD

W10331686 4 + 2

This board has diagnostic capabilities to help diagnose problems that may occur in your range. The LED light on the board will blink different codes should a problem occur. The meaning of these codes are printed on the board.



NEW

SPARK SWITCH HARNESS

8189754

Top Burner
Red & black wire



Has (2) .250" & (1) .110" female terminals
Has small "D" inserts (.256")
Used on 20" & 24" 4-burner spark ignition models

SPARK SWITCH

4157180

Top Burner
Light orange insert



Standard "D" insert (.340")

SURFACE ELEMENTS

660532

6" - 3 turn
940W @ 208V • 1250W @ 240V



"Delta" bracket

660533

8" - 4 turn
1580W @ 208V • 2100W @ 240V



SURFACE ELEMENTS

9761348

6" - 3 turn
1125W @ 208V • 1500W @ 240V



"Y" bracket

9761346

8" - 4 turn
1580W @ 208V • 2100W @ 240V



SURFACE ELEMENTS

Y04000036

6" - 3 turn
940W @ 208V • 1250W @ 240V



"Y" bracket

Y04000035

8" - 4 turn
1575W @ 208V • 2100W @ 240V



SURFACE ELEMENTS

Y04100165

6" - 4 turn
1125W @ 208V • 1500W @ 240V



"Delta" bracket

Y04100166

8" - 5 turn
1580W @ 208V • 2600W @ 240V



SURFACE ELEMENT

31734609

8" - 4 turn
1125W @ 208V
1500W @ 240V

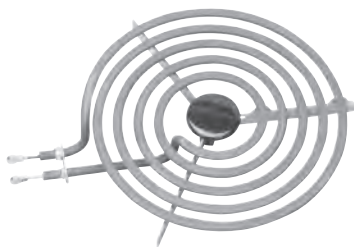


"Y" bracket

SURFACE ELEMENT

W10259865

8" - 5 turn
1950W @ 208V
2600W @ 240V

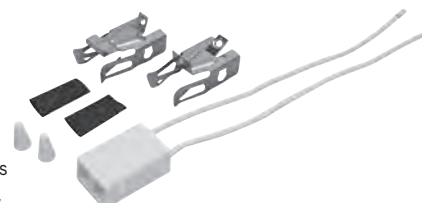


"Y" bracket

TERMINAL BLOCK

12001676

Includes:
Block, 0" lead wires with stripped ends,
(2) heat shrink,
(2) wire nuts &
(2) top clips



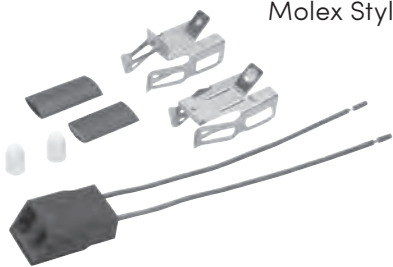
RANGE

TERMINAL BLOCK

330031

Molex Style

Includes:
Block, 6" lead wires with stripped ends,
(2) heat shrink,
(2) wire nuts &
(2) top clips

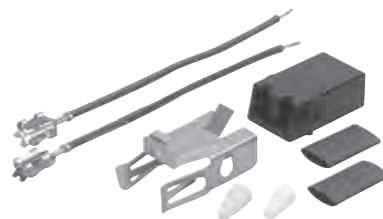


TERMINAL BLOCK

814399

Amp Style

Includes:
Block, (2) stripped lead wires with .5" female terminals,
(2) heat shrink,
(2) wire nuts &
(1) top clip



TERMINAL BLOCK

4363823

Main power



Includes mounting bracket

THERMAL FUSES

9759242

Cutout @ 130°

9759243

Cutout @ 120°



NEW

THERMOSTAT

3169302

Electric
(factory id #271-1401-99)
4 Terminals
21 amp



Includes jumper wire

THERMOSTAT

3196803

Electric
(factory id #275-3334-01)
(factory id #275-3506-00)
11/16" stem

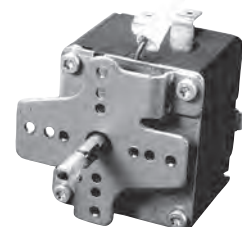


Has (3) .250" male terminals
Uses thermostat knob **#3196048**

THERMOSTAT

4364181

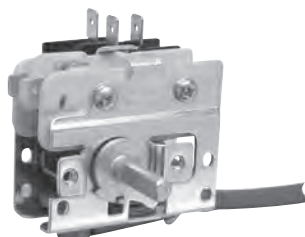
Electric
(factory id #6703G0015)
4 terminals



THERMOSTAT

74005019

Electric
(factory id #ER/27)
(factory id #275-5014-00)
125/250V
15 amp

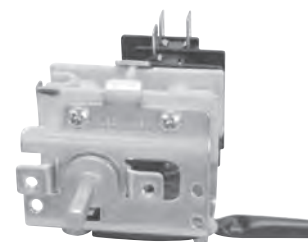


Has 8 terminals

THERMOSTAT

74009277

Electric
(factory id #ER/27)
(factory id #275-3451-00)
125/250V
25 amp

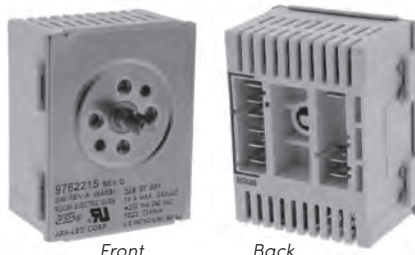


Has 7 terminals
Uses thermostat knob **#74003280**

THERMOSTAT

9762215

Electric
15 amp
240VAC



Front

Back

Has 9 terminals

NEW

THERMOSTAT

Y00206900

Electric
(factory id #6704G0013)



Has 4 terminals

RANGE

ADMIRAL • AMANA • CALORIC

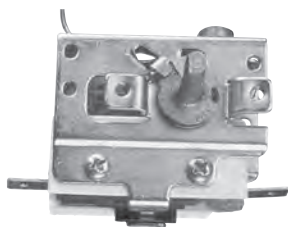
WHIRLPOOL

GLENWOOD • HARDWICK • IMPERIAL • MAGIC CHEF • MAYTAG • ROPER • SUNRAY • WELBLIT

THERMOSTAT

12400034

Gas
(factory id #275-3106-00)
(factory id #275-3140-05)
7/8" shaft length
120V • 2 wire



4364167

Bolt



Used on glow ignition models

THERMOSTAT

4364125

Gas
(factory id #5362G0016)
1-1/8" shaft length
3 outlets
Standing pilot
Bolt thru mount



Bolts go thru the manifold pipe and thread directly into thermostat

4364167

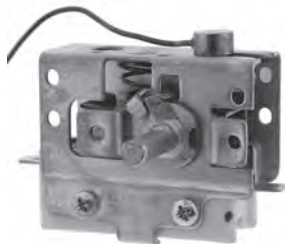
Bolt



THERMOSTAT

4371308

Gas
(factory id #275-3100-01)
(factory id #275-3100-04)
(factory id #275-3425-00)
3/4" shaft length
2 wire • 5 amp • 125VAC



Used with oven glow igniter **#814269**

THERMOSTAT

74002390

Gas
(factory id #275-3332-00)
7/8" shaft length
5 amp
125VAC

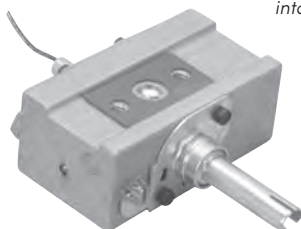


NEW

THERMOSTAT

74006182

Gas
(factory id #5362G0015)
1-1/4" shaft length
3 outlets
Standing pilot
Bolt thru mount



Bolts go thru the manifold pipe and thread directly into thermostat

THERMOSTAT

98003984

Gas
(factory id #6440G0018)
7/8" shaft length
2 wire • 5 amp • 120VAC



Used on glow ignition models

THERMOSTAT

W10121631

Gas
3 outlets • 3/4" shaft length
Millivolt
Standing pilot
Bolt thru mount



Bolts go thru the manifold pipe and thread directly into thermostat

NEW

THERMOSTAT

W10159016

Gas
(factory id #6460G0003)
9/16" shaft length
2 wire • 5 amp • 120V



NEW

TUBING

98017359

Rear Venturi



1/4" tubing with a 1/4" cc nut and attached orifice

TUBING

98017582

Front Venturi



1/4" tubing with a 1/4" cc nut and attached orifice

RANGE / REFRIGERATOR

TUBING

98017583
Left Venturi



1/4" tubing with a 1/4" cc nut and attached orifice

NEW

TUBING

98004310
4 ft length
3/16" tubing



NEW

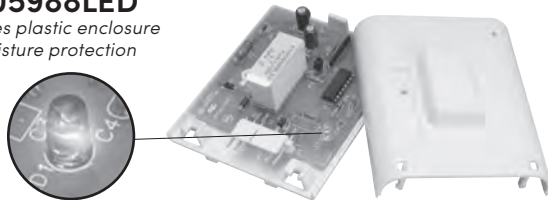
ADAPTIVE DEFROST CONTROL

61005988MA



ADAPTIVE DEFROST CONTROL

61005988LED
Includes plastic enclosure
for moisture protection



Use the blinking LED light as a diagnostic tool, it will indicate:
compressor is running, defrost heaters are on, cold control fails, defrost heater
or bi-metal thermo fails to open/close, defrost control fails, power fails

REFRIGERATOR

AIR DIFFUSER

2221992
4-9/16" wide
2-5/16" deep
1-3/8" high
Styrofoam



AIR DIFFUSER

2316186
2-1/4" wide
1-3/8" deep
3-7/8" high
Styrofoam



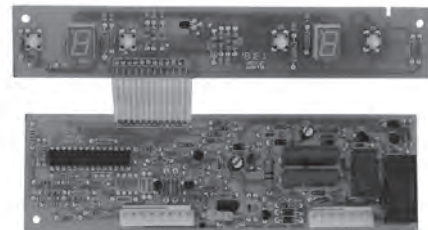
AIR DIFFUSER

12001377
4-5/8" wide
2-1/2" deep
4" high
Styrofoam



CIRCUIT BOARD

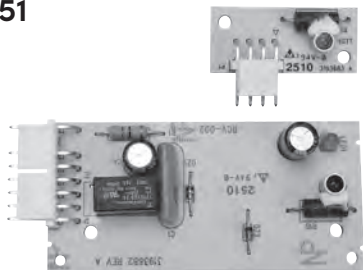
W10503278



NEW

CIRCUIT BOARD

W10757851



NEW

COLD CONTROL

2325700
(factory id #3ART5C159)
(factory id #3ART5C222)
16" capillary



REFRIGERATOR

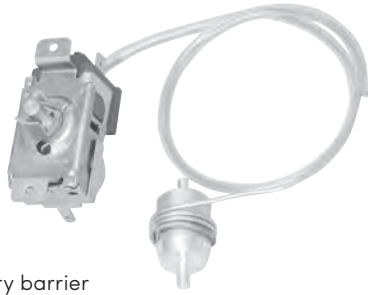
ADMIRAL • AMANA • CALORIC

WHIRLPOOL

GLENWOOD • HARDWICK • IMPERIAL • MAGIC CHEF • MAYTAG • ROPER • SUNRAY • WELBLIT

COLD CONTROL

61005789
(factory id #3ART5C212)



Includes plastic capillary barrier

COLD CONTROL KNOB

61006074
Temp markings: 1-7
3" diameter
Clear



CRISPER COVER

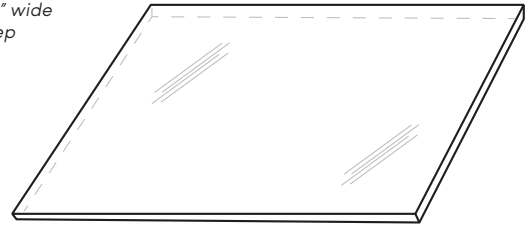
9791600
23" wide
19-1/4" deep



Used with
Crisper pan #2164186
Crisper support #9791824

CRISPER COVER INSERT

9791659
23-7/8" wide
16" deep
Glass



CRISPER PAN

2164186
11" wide
14-3/4" deep
7-1/2" high



Used with
Crisper cover #9791600
Crisper support #9791824

CRISPER PAN

2188656
8-1/4" wide
16-1/2" deep
14-3/4" high



NEW

CRISPER PAN

2188664
16-1/4" wide
14-3/4" deep
7-3/4" high



NEW

CRISPER PAN

2192009
22-1/2" wide
14-1/2" deep
7-1/2" high



CRISPER PAN

2218123
10-7/8" wide
18-1/2" deep
8-1/2" high



Used with
Crisper cover #2314548
Glass insert #2221693
Track #2163835

CRISPER PAN

2218124
13-1/4" wide
18-1/2" deep
8-1/2" high



Used with
Crisper cover #2314548
Glass insert #2221693
Track #2163835

REFRIGERATOR

CRISPER PAN

2218141

13-1/4" wide
18-1/2" deep
8-1/2" high



Has humidity control

CRISPER PAN

2256704

11-1/8" wide
8-1/4" deep
15-1/2" high



NEW

CRISPER PAN

W10166209

20" wide
12" deep
9" high



NEW

CRISPER PAN

W10804447

8-1/8" wide
11-1/8" deep
14-1/2" high



NEW

CRISPER RAIL

61004886

Left
13-3/8" wide
2" high



CRISPER RAIL

61004887

Right
13-3/8" wide
2" high



DAIRY DOOR

2218113

8-1/4" wide
6-1/2" deep



DAIRY DOOR

61002469

11-3/16" wide
3-1/4" deep



DEFROST HEATER

2263749

Calrod
475W @ 120V



DEFROST HEATER

61001946

Quartz Tube
375W @ 115V
18" overall length



Has 9" lead wires with .250" male terminals ends

REFRIGERATOR

ADMIRAL • AMANA • CALORIC

WHIRLPOOL

GLENWOOD • HARDWICK • IMPERIAL • MAGIC CHEF • MAYTAG • ROPER • SUNRAY • WELBLIT

DEFROST THERMOSTAT

2321799
L7.4-15.2C

1/4" tube side
push-on clip



Has 9" stripped lead wires

DEFROST THERMOSTATS

4387490 L47-26F
4387503 L48-30F

1/4" tube side
push-on clip

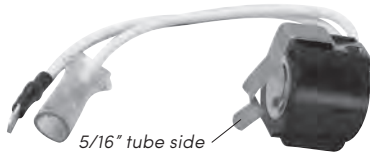


Has 11-1/2" stripped lead wires

DEFROST THERMOSTAT

61002992
L38-15F

5/16" tube side
push-on clip



Has 5-1/2" lead wires with (1) .250" female terminal and (1) .187" male terminal

DEFROST THERMOSTAT

61005254
L54-15F

1/4" tube side
push-on clip



Has 3" lead wires with (1) .250" female terminal and (1) .187" male terminal

DEFROST THERMOSTAT

67003426
L42-30C

1/4" tube side
push-on clip



Has 7-1/2" and 24-1/2" stripped lead wires

DEFROST THERMOSTAT

W10225581
L45-27C

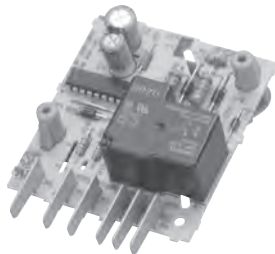
1/4" tube side
push-on clip



Has 8-1/2" stripped lead wires

DEFROST TIMER

4388931
120V
60 Hz



Includes (2) screws and a two sided 4" long quick disconnect

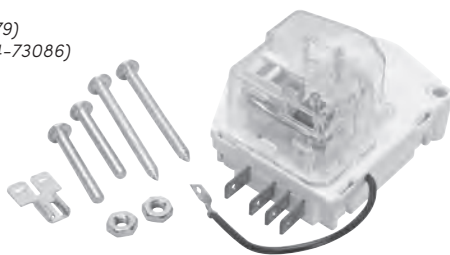
DEFROST TIMER

2183400
(factory id #BQ-3001-00)
8 hr. - 25 min.
10 amp



DEFROST TIMER

482493
(factory id #M179)
(factory id #604-73086)
8 hr. - 21 min.
15 amp, 120V



DEFROST TIMER

682332
(factory id #DQ-3001-00)
8 hr. - 21 min.
10 amp



REFRIGERATOR

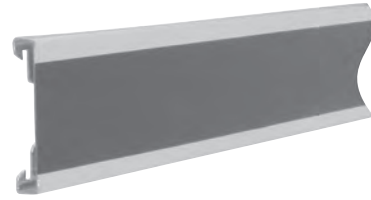
Please order by model number to insure that you receive the correct endcap for your application.

The factory approved replacement part may differ in appearance, length or color to the original. If necessary, cut to the appropriate length using the original part as a pattern and smooth any rough edges.

DOOR BAR

1120826

27-1/2" x 1-3/4"



Fits endcap numbers:
2156006 (R/L)

DOOR BARS

2195943

12-15/16" x 1-3/4"

W10421484

23-3/16" x 1-3/4"



Fits endcap numbers:
2156006 (R/L)

DOOR BARS

2163629 21-13/16" x 1"

2180027 13-1/8" x 1"

2201050 21-5/8" x 1"

2201051 23-3/8" x 1"

2201052 9-1/8" x 1"

2201061 26-1/2" x 1"



DOOR BAR

2197356

21-5/8" x 2-1/2"



Fits endcap numbers:
2159365 (R/L)

DOOR BARS

2266727

22-1/8" x 1"

W10234242

13-1/4" x 1"



DOOR BAR

2266738

22-1/8" x 1-3/4"



DOOR BARS

61001962

20-7/8" x 1-9/16"

61001964

21-5/8" x 1-9/16"

61001965

21" x 1-9/16"

61002400

23-3/8" x 1-9/16"



DOOR BARS

61001963

20-1/8" x 1-9/16"

61002399

23-7/8" x 1-9/16"

61002609

26-7/8" x 1-9/16"



DOOR BAR

W10172187

24" wide

4-1/4" deep

3-1/2" high



NEW

REFRIGERATOR

ADMIRAL • AMANA • CALORIC

WHIRLPOOL

GLENWOOD • HARDWICK • IMPERIAL • MAGIC CHEF • MAYTAG • ROPER • SUNRAY • WELBLIT

DOOR BAR

W10183971

24" wide
4-1/4" deep
4-3/4" high



NEW

DOOR BAR/BIN

2187172

16-1/2" wide
6-7/8" deep
3-3/8" high



NEW

DOOR BAR/BIN

W10321304

16-1/2" wide
7-1/2" deep
3-3/8" high



NEW

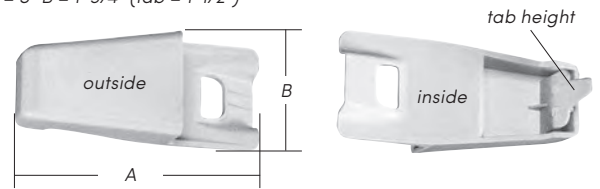
DOOR BAR ENDCAPS

2156003

A = 4" B = 1-3/4" (tab = 1-3/4")

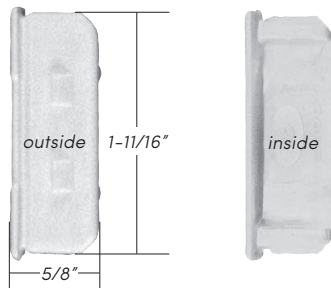
2195915

A = 5" B = 1-3/4" (tab = 1-1/2")



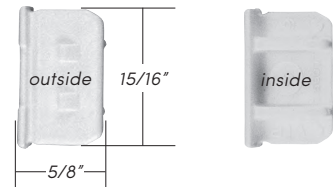
DOOR BAR ENDCAP

2156006



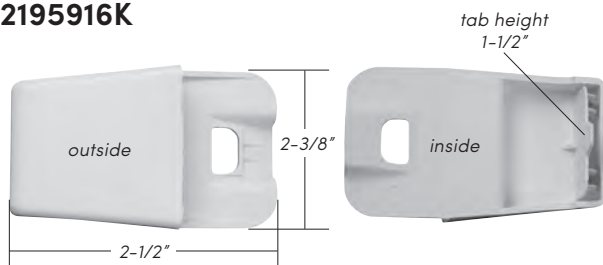
DOOR BAR ENDCAP

2156007



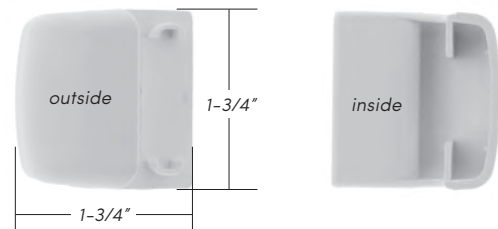
DOOR BAR ENDCAP

2195916K



DOOR BAR ENDCAP

61002112



EVAPORATOR TRAY

2201801

18-1/2" length
6" wide
1-1/2" high



FAN BLADE

2169142

Clockwise rotation
4" diameter blade



Used with evaporator motor
#W10189703

REFRIGERATOR

DOOR GASKETS

Please order gaskets by appliance model number

The OEM makes frequent gasket substitutions, thus the approved replacement part may be of a different color and at times a slightly different gasket dimension. We try to keep original gaskets available as much as possible. Should you have any concerns regarding your gasket needs, please order by model number to insure that you receive the correct gasket.

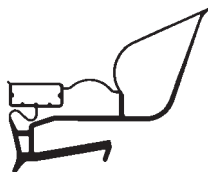
Part No.	Color	Profile	Type
2159057	White		Food
2159061	White		Food
2159327	White		Freezer
2188445A	Beige	A	Food
2188446A	Beige	A	Food
2188448A	Beige	A	Food
2188456A	Beige	A	Freezer
2188462A	Beige	A	Freezer
2262080	Beige		Food
2262081	Beige		Food

Part No.	Color	Profile	Type
2319263T	White	C	Freezer
2319264T	White	C	Food
2319265T	White	C	Food
2319266T	White	C	Food
61003998	White	B	Food
61004002	White	B	Freezer
61004003	White	B	Food
61004008	White	B	Food
W10190029			Food

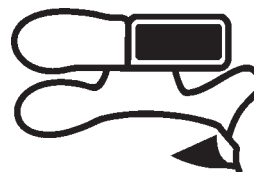
Profile A



Profile B



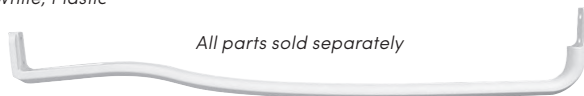
Profile C



HANDLE

2202098 19-7/8" overall length

2202806W 22-1/8" overall length
White, Plastic



All parts sold separately

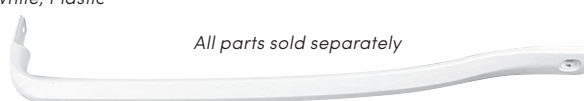
489357
Screw



HANDLES

2202807W 20-1/8" overall length

2221946W 20-1/4" overall length
White, Plastic



All parts sold separately

2202819W
Screw Cover



489357
Screw



8281146
Screw



HANDLE

67005140

3-1/2" wide
8-3/8" high
White, Plastic



NEW

HANDLE

W10373956

21-1/2" overall length
Black, Plastic
2 pack



REFRIGERATOR

ADMIRAL • AMANA • CALORIC

WHIRLPOOL

GLENWOOD • HARDWICK • IMPERIAL • MAGIC CHEF • MAYTAG • ROPER • SUNRAY • WELBILT

HANDLE ENDCAP

2183139

13/16" wide
1-5/8" high
Chrome, Plastic



All parts sold separately

488729
Screw



1101634
Screw Cover



HANDLE ENDCAP

2183140

13/16" wide
1-5/8" high
Black, Plastic



All parts sold separately

488729
Screw



HANDLE ENDCAP

2183141

13/16" wide
1-5/8" high
White, Plastic



All parts sold separately

488729
Screw



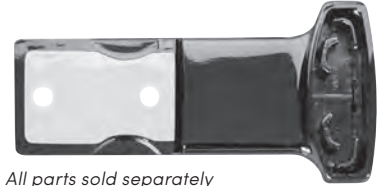
9791769
Screw Cover



HANDLE ENDCAP

2191881

3-1/16" wide
1-1/2" high
Black, Plastic



All parts sold separately

943188
Spacer



488920
Screw



HEAT PROBE

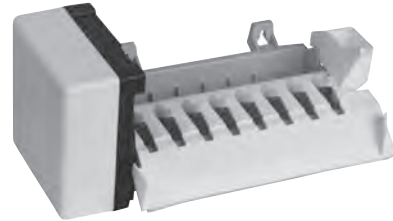
819043



Prevents ice build-up in the drain tube

ICE MAKER

2198597



ICE MAKER

4317943



NEW

ICE MAKER

D7824706Q



NEW

ICE MAKER GEAR ASSEMBLY

W10190935



Front



Back

NEW

LIGHT SOCKET

61005604



REFRIGERATOR

LIGHT SWITCH

1118894

5 amp - 125V
2.5 amp - 250V



Has (2) .187" male terminals

MOTOR

2188874

Condenser Fan
115V • 60 Hz
4.1W
1-1/4" shaft



NEW

MOTOR

2315539

Evaporator Fan
115V
60 Hz
3/4" shaft



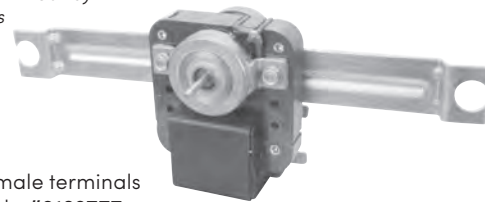
NEW

Has (1) .250" male terminal

MOTOR

4389142

Evaporator Fan
(factory id #B264-405/19)
115V • 0.31 amps
3000 RPM
3/4" shaft

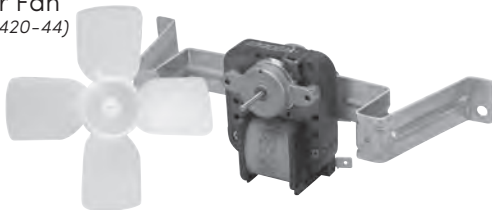


Has (2) .250" male terminals
Used with blade **#2163777**

MOTOR

4389145

Evaporator Fan
(factory id #29420-44)
115V
3/4" shaft



Has (2) .250" & (1) .187" male terminals

MOTOR

482731

Evaporator Fan
120V • 0.26 amps
3000 RPM
3/4" shaft



Has (2) .250" & (1) .187" male terminals

MOTOR

61004888

Evaporator Fan
(factory id #78756-1)
120V • 0.21 amps
3000 RPM
15/16" shaft



Has (2) .250" & (1) .187" male terminals
Used with fan blade **#61001935**

MOTOR

61004888KIT

Evaporator Fan
(factory id #78756-1)
120V • 0.21 amps
3000 RPM
15/16" shaft



Has (2) .250" & (1) .187" male terminals
Includes 19" quick disconnect wire harness
Used with fan blade **#61001935**

MOTOR

W10128551

Evaporator Fan
115V • 0.14 amps
60 Hz
1-3/8" shaft



NEW

Has (2) .250" & (1) .187" male terminals

MOTOR

W10188389

Evaporator Fan
120V • 0.12 amps
60 Hz • 2950 RPM
7/8" shaft



NEW

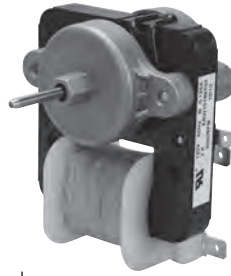
Has (2) .250" & (1) .187" male terminals

REFRIGERATOR

MOTOR

W10189703

Evaporator Fan
120V • 0.135 amps
60 Hz • 3000 RPM
1" shaft

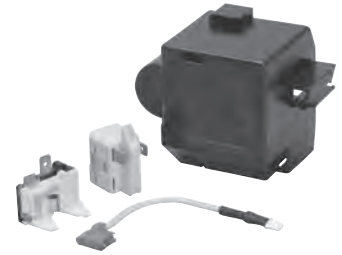


Has (2) .250" & (1) .187" male terminals

OVERLOAD/RELAY COMBINATION

12002782

Used on early model
Embraco compressors
Includes: cover, relay, overloa, jumper wire assembly and
instruction sheet



OVERLOAD/RELAY COMBINATION

2188829



NEW

OVERLOAD/RELAY COMBINATION

2188830



NEW

OVERLOAD/RELAY COMBINATION

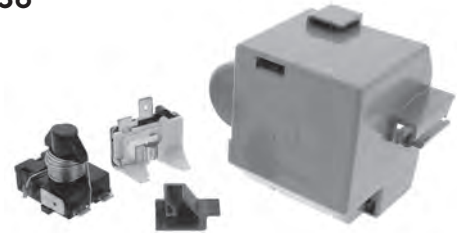
4387913



NEW

OVERLOAD/RELAY COMBINATION

4387938



Includes: cover, relay, overload and plastic guide

NEW

OVERLOAD/RELAY COMBINATION

61005518

(factory id #4SP1088)
(factory id #4SP14D427NF)

Original 1-piece style



Has (2) .250" and (1) .187" male terminals
Maytag subs to kit #12002782

OVERLOAD/RELAY COMBINATION

61006022

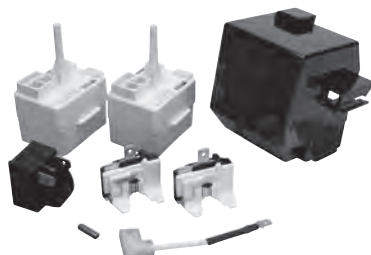
(factory id #013655107)
(factory id #TSD)

Has (1) .250" and (1) .187" male terminals,
and has (2) .187" female terminals
Uses harness #61006023 (not shown)



OVERLOAD/RELAY COMBINATION

8201786



Includes: cover, (2) relay/overload combos, (2) overloads,
relay and jumper wire assembly

NEW

OVERLOAD/STARTER COMBINATION

W10194431



Has (2) .187" male terminals

NEW

REFRIGERATOR / DISHWASHER

RELAY

2262181



Has (3) .250" male terminals

RELAY

4357156



Has (3) .250" male terminals

RUN CAPACITORS

2169373

(factory id #JSU21X126AQE)
120 VAC • 12uF

658898

(factory id #JSU21X156AQE)
120 VAC • 15uF



Has (2) .187" male terminals

WATER FILTER

4396841



NEW

THERMISTOR

2188819

12" length

NEW



THERMISTOR

2188820

4" length

NEW



THERMISTOR

W10383615

3-1/4" length

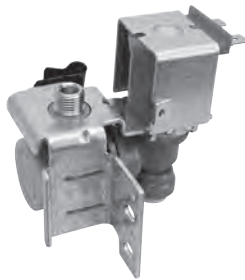
NEW



WATER VALVE

2315576

NEW



WATER VALVE

W10408179

NEW



Includes tubing and fitting

MOUNT ASSEMBLY

8268743

NEW



PUMP & MOTOR

W10247394

NEW



WHIRLPOOL

ADMIRAL • AMANA • CALORIC • GLENWOOD • HARDWICK • IMPERIAL • MAGIC CHEF • MAYTAG

DISHWASHER / DRYER

ADMIRAL • AMANA • CALORIC

WHIRLPOOL

GLENWOOD • HARDWICK • IMPERIAL • MAGIC CHEF • MAYTAG • ROPER • SUNRAY • WELBLIT

RACK ROLLERS

4317933

4 pack



NEW

WATER VALVE

W10219643



NEW

BELTS

341241

33002535

511255P

661570

Y312959



DRYER

BLOWER WHEEL

Y303836

Includes clamp
7-1/2" diameter
3-1/8" deep



COILS

279834

Main and Primary
For "M" series valves

Main

Primary



694539 Primary
3 terminals

694540 Main
2 terminals

CONTROL BOARD

8546219



NEW

DOOR SWITCH

3406105



NEW

DRUM ROLLER

12001541

3" diameter
3/4" thick



DRUM ROLLER

37001042

3" diameter
1/2" thick



NEW

DRUM ROLLER

349241T

3-1/4" diameter



Includes (2) rollers, (4) tri-rings and (2) retainers

DRYER

DRUM ROLLER SHAFT

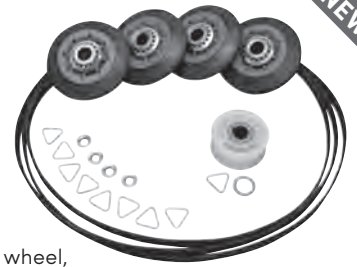
56461P



NEW

DRYER REPAIR KIT

4392067



NEW

Includes (4) rollers, (1) idler wheel, (9) tri-rings and (5) retainers

ELEMENT

279838

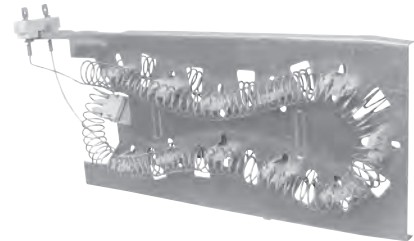
240V
5400W
10" wide
6-5/8" high



ELEMENT

3387747

240V
5400W
13-3/8" wide
2-3/8" high

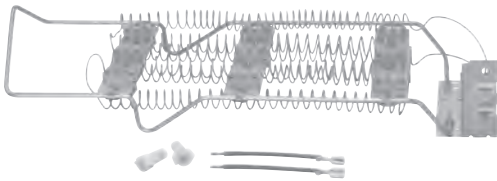


NEW

ELEMENT

4391960

240V
5200W



Includes (2) 5-1/2" lead wires with .250" female terminal ends and stripped ends and (2) wire nuts

IDLER PULLEY

279640

1-7/8" diameter
3/4" thick



NEW

Includes tri-ring

IDLER PULLEY

6-3700340

2-1/4" diameter
1" thick



NEW

IDLER PULLEY

W10547292

Wheel:
1-7/8" diameter
3/4" thick



NEW

IDLER PULLEY

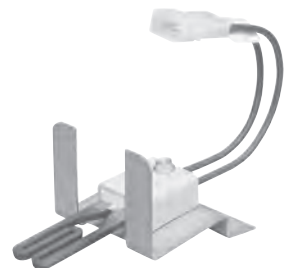
Y54414

2-1/8" diameter
13/16" thick



IGNITER

279311



Includes mounting bracket
Quick disconnect has (2) male pin connections

DRYER

IGNITER

4391996



Quick disconnect has (2) male pin connections

IGNITER

510184P



Quick disconnect has (2) male pin connections

LINT SCREEN

339392

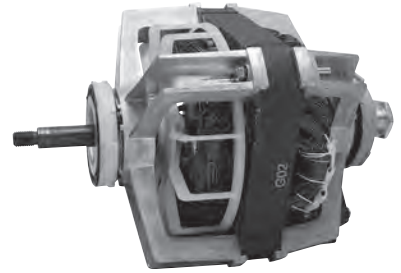
17-1/2" long
7-1/8" wide



MOTOR

2200376

1/3 HP
5.5 amps
1725 RPM



MOTOR

279827

1/3 HP
5.9 amps
120V/60 Hz



MOTOR

W10410999

1/4 HP
4.5 amps
115V, 60 Hz
1725 RPM
Single phase
2 speed

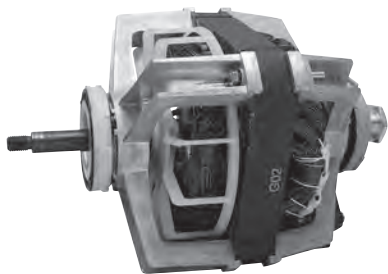


Used on direct drive models

MOTOR

511629P

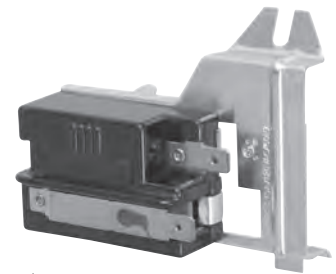
1/3 HP
5.5 amps
1725 RPM



RADIANT SENSOR

338906

5.75 amps
120VAC



Has (2) .250" male terminals

ROTARY SWITCH

W10114118

4 position ATC switch



STRIKE & LATCH

279570



ADMIRAL • AMANA • CALORIC

WHIRLPOOL

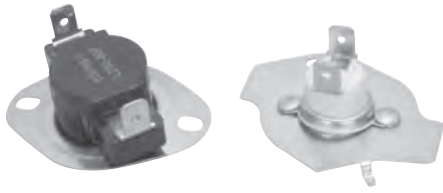
GLENWOOD • HARDWICK • IMPERIAL • MAGIC CHEF • MAYTAG • ROPER • SUNRAY • WELBLIT

DRYER / WASHER

THERMAL CUTOFF

279769

Cutout @ 352°F
Limit switch:
open @ 250°F
close @ 170°F

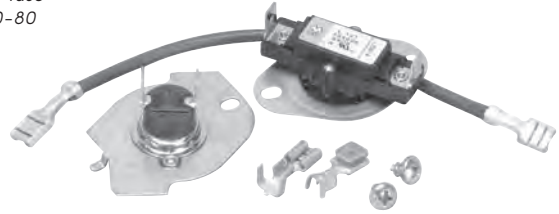


Both have (2) .250" male terminals

THERMAL CUTOFF

279816

309° fuse
L250-80



THERMAL FUSE

3392519



Has (2) .187" male terminals

THERMAL LIMITER

3403607



THERMISTOR

8577274



NEW

THERMOSTAT

3387134

L155-25 with 120V
heat anticipator



NEW

THERMOSTAT

3390291

L250-80F



THERMOSTAT

3977767

L221-65F



NEW

ACTUATOR

W10006355



NEW

Has (7) .250" male terminals

AGITATOR CAM

285748

3-1/2" cam body



NEW

WASHER

WASHER

AGITATE DOGS

80040
4 pack



BELT

211124



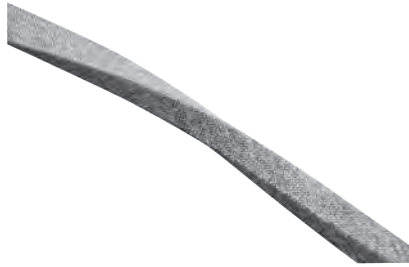
BELT

211125



BELT

27001006



NEW

CLUTCH

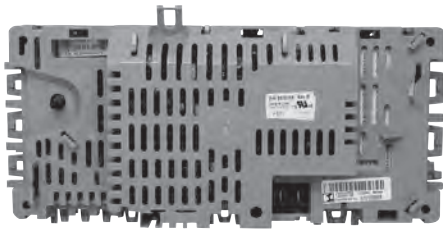
285785



NEW

CONTROL BOARD

W10189966



NEW

COUPLER

285753A



NEW

DOOR LATCH

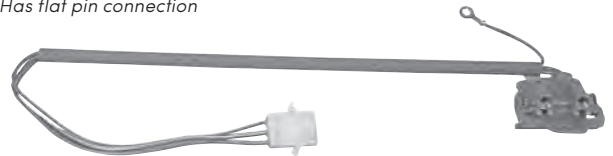
W10404050



NEW

LID SWITCHES

285671
Has round pin connection
3949247
Has flat pin connection



Used on direct drive models

LID SWITCH

3355458



NEW

LID SWITCH

3355806



NEW

WASHER

LID SWITCH

3949238

NEW



PUMP

356465

NEW



PUMP

356780

NEW



PUMP

201566P

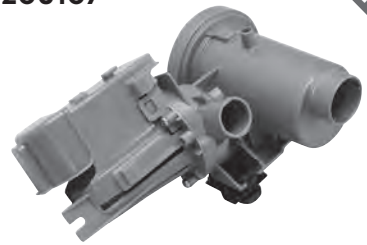
NEW



PUMP

280187

NEW



PUMP

3363394



PUMP

3363892



PUMP

22003059

NEW



PUMP

27001233



PUMP

W10536347

NEW



RUN CAPACITOR

W10278117

NEW



SHOCK ABSORBER

8182703

NEW



ROPER • SUNRAY • WELBILT

WHIRLPOOL

ADMIRAL • AMANA • CALORIC • GLENWOOD • HARDWICK • IMPERIAL • MAGIC CHEF • MAYTAG

WASHER

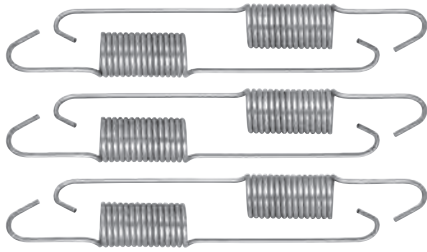
ADMIRAL • AMANA • CALORIC

WHIRLPOOL

GLENWOOD • HARDWICK • IMPERIAL • MAGIC CHEF • MAYTAG • ROPER • SUNRAY • WELBLIT

SPRING KIT

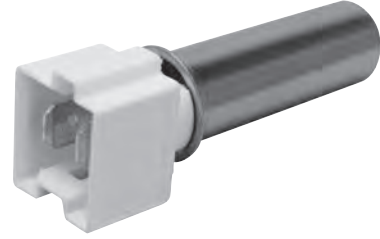
12002773
6 pack



NEW

TEMPERATURE SENSOR

W10467289



NEW

TIMER

W10113804



NEW

TIMER

W10199989



NEW

WATER VALVE

285805



NEW

WATER VALVE

358276



WATER VALVE

3979346



NEW

WATER VALVE

67005154



NEW

WATER VALVE

W10212596



NEW

WATER VALVE

W10212598



NEW

WATER VALVE

W10239942



NEW