

RETURN TO MAIN INDEX

# PARTS LIST FOR

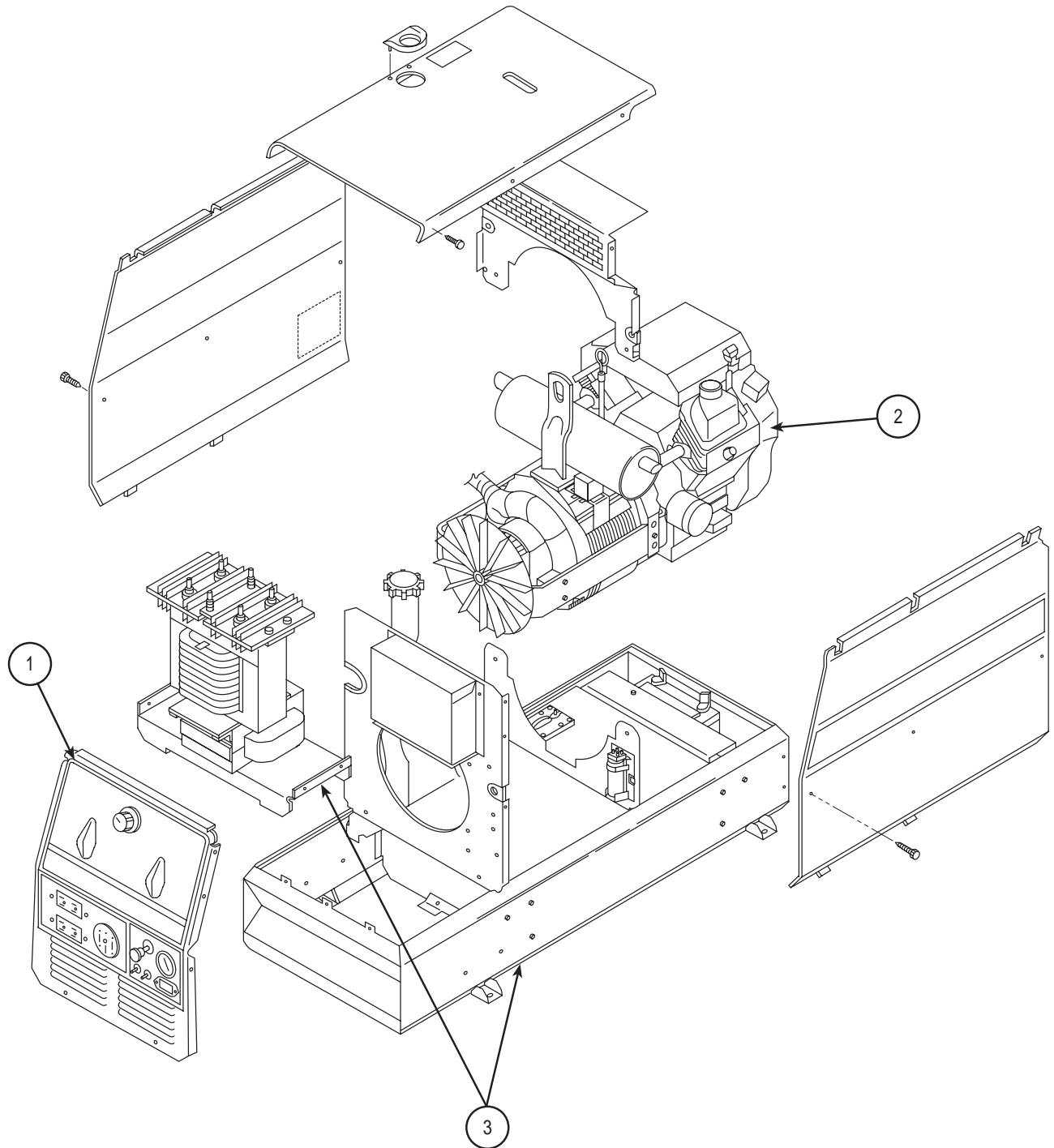
# Ranger 8

## AND

# Ranger 8 LPG

Index of Sub Assemblies  
Illustration of Sub Assemblies  
Index of Sub Assemblies  
Illustration of Sub Assemblies  
Index of Sub Assemblies  
Illustration of Sub Assemblies  
Index of Sub Assemblies  
Illustration of Sub Assemblies

# ILLUSTRATION OF SUB ASSEMBLIES



Index of Sub Assemblies

# Ranger 8 & Ranger 8 LPG

## For Codes: 9972 to 10998

Do Not use this Parts List for a machine if its code number is not listed. Contact the Service Department for any code numbers not listed.

Use the Main Assembly drawing on the left hand page and the table below to determine which sub assembly page and column the desired part is located on for your particular code machine.

Sub Assembly Item No.	1 2 3 3								
	Optional Equipment	Miscellaneous Items	Case Front Assembly	Engine/Rotor/Stator Assembly	Base Assembly (page 1 of 2)	Base Assembly (page 2 of 2)	Undercarriage Assembly (K933-1)	Undercarriage Platform (934-2) (Double Cylinder)	LPG Undercarriage Platform (K934-1) (Single Cylinder)
SUB ASSEMBLY PAGE NAME	P-229-B.1	P-229-B.2	P-229-C	P-229-D	P-229-E	P-229-E.3	P-253-C	P-255-C	P-254-C
PAGE NO.									
CODE NO.									
9972 Onan		1	1	1	1	1	•	•	•
9973 Onan CSA		1	1	1	1	1	•	•	•
9974 Kohler		1	1	1	1	1	•	•	•
9983 (Never Built)		•	1	1	1	1	•	•	•
10021 (Never Built)		•	1	1	1	1	•	•	•
10110 Kohler CSA		1	1	1	1	1	•	•	•
10136 Onan LPG		1	2	2	2	2	1	1	1
10214 Onan LPG/CSA		1	2	2	2	2	1	1	1
10338 Onan		1	1	1	1	1	•	•	•
10339 Onan CSA		1	1	1	1	1	•	•	•
10340 Kohler		1	1	1	1	1	•	•	•
10341 Kohler CSA		1	1	1	1	1	•	•	•
10373 Onan		1	1	1	1	1	•	•	•
10374 Onan CSA		1	1	1	1	1	•	•	•
10375 Kohler		1	1	1	1	1	•	•	•
10376 Kohler CSA		1	1	1	1	1	•	•	•
10377 Onan LPG/CSA		1	2	2	2	2	1	1	1
10526 KohlerLPG/CSA		1	2	2	2	2	1	1	1
10535 Onan		1	3	3	3	3	•	•	•
10536 Onan CSA		1	3	3	3	3	•	•	•
10537 Kohler		1	3	3	3	3	•	•	•
10538 Kohler CSA		1	3	3	3	3	•	•	•
10541 KohlerLPG/CSA		1	4	4	4	4	1	1	1
10886 Honda CSA		1	5	5	5	5	•	•	•
10908 Onan		1	6	6	6	6	•	•	•
10935 Kohler		1	6	6	6	6	•	•	•
10937 Kohler LPG		1	8	8	8	8	•	•	•
10998 Honda		1	7	7	7	7	•	•	•

#

Illustration of Sub Assemblies

# OPTIONAL EQUIPMENT LISTING

Miscellaneous Options Available for your machine are listed below:

# Indicates a change this printing.

DESCRIPTION	PART NUMBER
Water Valve Kit (For K799)	Order K844
Auxiliary Power Plug Kit	Order K802R
Canvas Cover	Order K886-1
Undercarriage (Below Code 10500)	Order K889-2
Undercarriage Caster Kit (Below Code 10500)	Order K893-1
Spark Arrestor	Order K894-1
GFCI Receptacle Kit (Not used on Code 10908,10935,10937,10998)	Order K896-1
Remote Output Control	Order K857
Accessory Package	Order K710
Remote Control Receptacle Kit	Order K892-1
Rotor Pulling Kit	Order S20788
( Available to Field Service Shops Only)	
High Frequency Kit	Order K799
High Frequency Mounting Kit	Order K902-3
Adapter	Order K915-1
Undercarriage (4 Wheeled, Hand Moving (LPG))	Order K933-1
Platform Welded Assembly (Single Cylinder) (For K933-1)	Order K934-1
Platform Welded Assembly (Double Cylinder) (For K933-1)	Order K934-2
Light Welder Trailer, Heavy Duty (Except LPG Models)	Order K957-1
GFCI Receptacle Kit (Above Code 10500) (Not used on Code 10908,10935,10937,10998)	Order K896-1
Aux. Power Plug Kit (Used on Code 10908,10935,10937,10998)	Order K802N
Undercarriage, Puncture-Proof Tires (Used on Code 10908,10935,10937,10998)	Order K889-3
GFCI Receptacle Kit (Used on Code 10908,10935,10937,10998)	Order K1690-1
Wheel Kit, Puncture Proof Tires (Used on Code 10908,10935,10937,10998)	Order K1631-1
Undercarriage (All Terrain) (Used on Code 10908,10935,10937,10998)	Order K1737-1
Single Cylinder Holder (Used on Code 10908,10935,10937,10998)	Order K1745-1
Undercarriage (Factory) (Used on Code 10908,10935,10937,10998)	Order K1770-1
Roll Cage (Used on Code 10908,10935,10937,10998)	Order K1788-1
Full KVA Adapter (Used on Code 10908,10935,10937,10998)	Order K1816-1



Index of Sub Assemblies

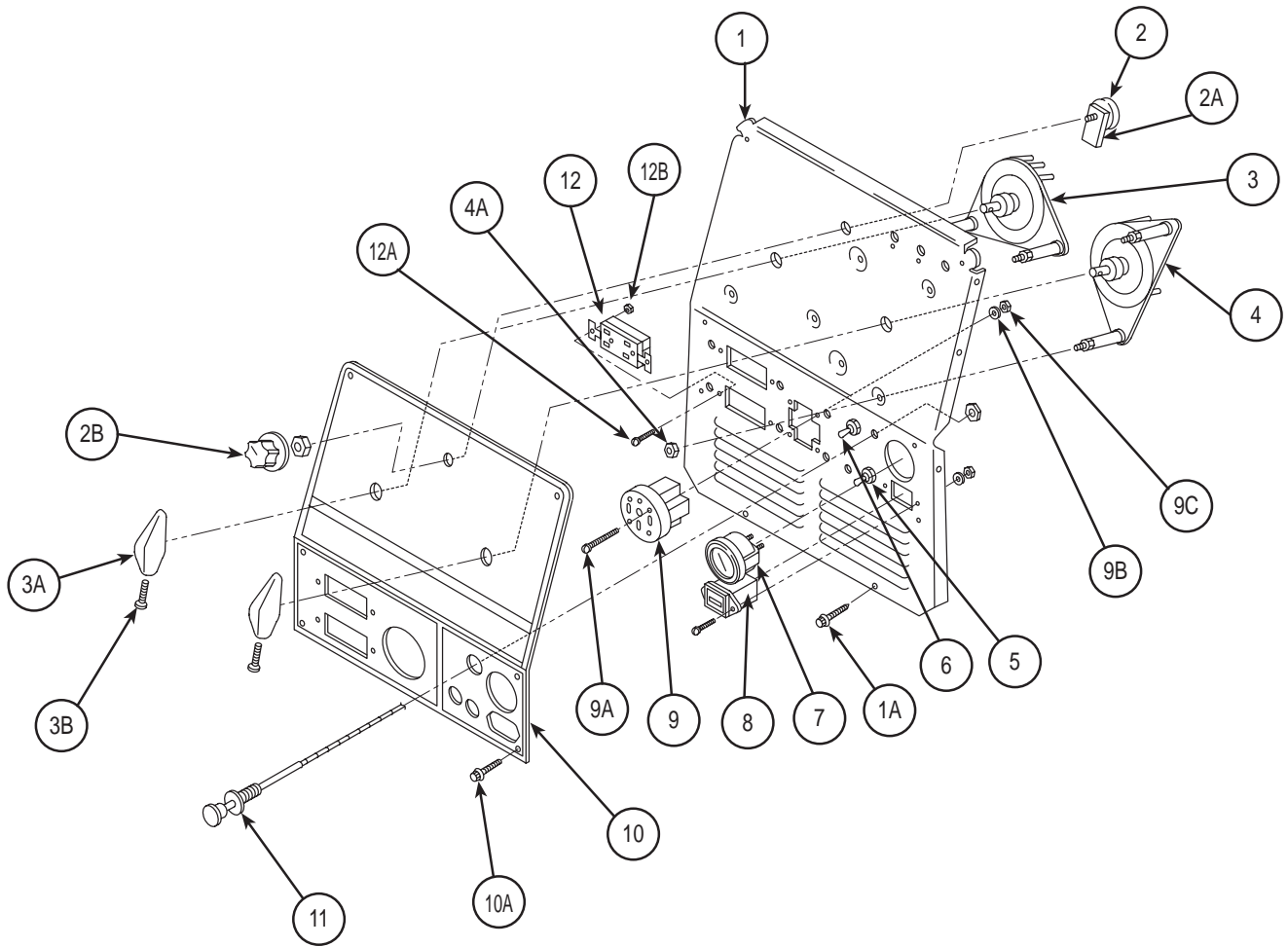
# Indicates a change this printing.

Use only the parts marked "x" in the column under the heading number called for in the model index page.

ITEM	DESCRIPTION	PART NO.	QTY.	1	2	3	4	5	6	7	8	9
	Right Case Side Self-Tapping Screw	G2541 S8025-91	1 3	X X								
	Left Case Side Self-Tapping Screw	G2542 S8025-91	1 3	X X								
	Roof Roof (LPG) Self-Tapping Screw	G2534 G2747 S8025-91	1 1 6	X X X								
	Fuel Trough Fuel Warning Decal Fuel Warning Decal (LPG)	M16533 T13086-108 T13086-109	1 1 1	• X X								
	Warning Decal Side Decal (Right & Left) Battery Caution Decal Earth Ground Connection Decal	M16197 G2685 S17851 T13260-4	1 1 1 1	X X X X								
	Wiring Harness (Onan) (code 9972, 9973, 10136, 10214, 10388) Plug & Lead Assembly (Term Block) Plug & Lead Assembly (P1)	G2633-1 S18250-288 S18250-289	1 1 1	• • •								
	Wiring Harness (9974, 10110, 10339, 10340, 10341) Plug & Lead Assembly (Term Block) Plug & Lead Assembly (P1)	G2633-3 S18250-290 S18250-289	1 1 1	• • •								
	Wiring Harness (10373, 10374, 10377) Plug & Lead Assembly (Term Block) Plug & Lead Assembly (P1)	G2633-4 S18250-288 S18250-289	1 1 1	• • •								
	Wiring Harness (10375, 10376, 10526) Plug & Lead Assembly (Term Block) Plug & Lead Assembly (P1)	G2633-5 S18250-477 S18250-289	1 1 1	• • •								
	Wiring Harness (10535, 10536) Plug & Lead Assembly (Term Block) Plug & Lead Assembly (P1)	G3422-1 S18250-288 S18250-289	1 1 1	• • •								
	Wiring Harness (10537, 10538, 10541, 10886, 10935, 19998) Plug & Lead Assembly (Term Block) Plug & Lead Assembly (P1)	G3422-2 S18250-630 S18250-289	1 1 1	• • •								
	Wiring Harness (10908, 10937) Circuit Breaker Cover Seal	G4235 T12287-21 S12934-1	1 1 1	 X X								
	Wiring Diagram (Code 9972, 10136, 10214, 10338)	M17047	1									
	Wiring Diagram (Code 9973, 10339)	M17048	1									
	Wiring Diagram (Code 9974, 10340)	M17049	1									
	Wiring Diagram (Code 9983)	M17050	1									
	Wiring Diagram (Code 10021)	M17053	1									
	Wiring Diagram (Code 10110, 10341)	M17464	1									
	Wiring Diagram (Code 10373, 10526, 10535, 10541)	M18331	1									
	Wiring Diagram (Code 10274, 10377, 10536)	M18332	1									
	Wiring Diagram (Code 10375, 10537)	M18333	1									
	Wiring Diagram (Code 10376, 10538)	M18334	1									
	Wiring Diagram (Code 10886)	M19988	1									
	Wiring Diagram (Code 10908, 10935, 10937)	M20049	1									
	Wiring Diagram (Code 10998)	G4375	1									

Index of Sub Assemblies

# CASE FRONT ASSEMBLY



Index of Sub Assemblies  
Index of Sub Assemblies  
Index of Sub Assemblies  
Index of Sub Assemblies

Part Numbers  
Part Numbers  
Part Numbers  
Part Numbers

# Indicates a change this printing.

Use only the parts marked "x" in the column under the heading number called for in the model index page.

ITEM	DESCRIPTION	PART NO.	QTY.	1	2	3	4	5	6	7	8	9
1	Case Front	G2261	1	X	X	•	•	•	•	•	•	
1	Case Front	G3416	1	•	•	X	X	X	X	X	X	
1A	Self-Tapping Screw (Hold Case Front to Base)	S8025-91	2	X	X	X	X	X	X	X	X	
2	Output Potentiometer	T10812-112	1	X	X	X	X	X	X	X	X	
2A	Potentiometer Spacer	S18280	1	X	X	X	X	X	X	X	X	
2B	Knob	T10491-1	1	X	X	X	X	X	X	X	X	
2C	"O" Ring (Not Shown)	T13483-7	1	X	X	X	X	X	X	X	X	
3	Selector Switch and Mounting Assembly	M17013	1	X	X	X	X	X	X	X	X	
3A	Control Handle	M16493	2	X	X	X	X	X	X	X	X	
3B	Self-Tapping Screw	S8025-78	2	X	X	X	X	X	X	X	X	
4	Arc Polarity Switch Assembly	M17014	1	X	X	X	X	X	X	X	X	
4A	#10-24 Hex Lock Nut (Not Shown)	T9187-9	2	X	X	X	X	X	X	X	X	
5	Toggle Switch (Below Code 10370)(On/Off) (ONAN)	T10800-25	1	X	X	•	•	•	•	•	•	
5	Toggle Switch (Above Code 10370)(On/Off) (ONAN)	T13562	1	X	X	X	X	X	•	X	X	
5	Toggle Switch (Below Code 10370)(On/Off) (KOHLER)	T10800-43	1	X	X	•	•	•	•	•	•	
5	Toggle Switch (Above Code 10370)(On/Off) (KOHLER)	T10800-36	1	X	X	X	X	X	X	•	X	
5	Toggle Switch (Code 10908) (ONAN)	T10800-36	1	•	•	•	•	•	X	X	•	
5	Toggle Switch (Code 10998) (HONDA)	T10800-36	1	•	•	•	•	•	•	X	•	#
6	Toggle Switch (Idle)	T10800-4	1	X	X	X	X	X	X	X	X	
7	Ammeter	S7514-8	1	X	X	X	X	X	X	X	X	
8	Hour Meter	S17475-3	1	X	X	X	X	X	X	X	X	
9	Single Receptacle	S18907-2	1	X	X	X	X	X	X	X	X	
9A	#8-32 x 5/8 Pan Head Screw	NSS	4	X	X	X	X	X	X	X	X	
9B	Lock Washer	T9695-3	4	X	X	X	X	X	X	X	X	
9C	#8-32 Hex Nut	CF000042	4	X	X	X	X	X	X	X	X	
10	Nameplate (CSA versions)(Below Code 10214)	L9035-1	1	X	•	•	•	•	•	•	•	#
	Nameplate (non-CSA versions) (Below Code 10370)	L9035 0	1	X	•	•	•	•	•	•	•	#
	Nameplate (non-CSA versions) (Above Code 10370)	L10183	1	X	•	X	X	•	•	•	•	
	Nameplate (Below Code 10370)	L9388 0	1	•	X	•	•	•	•	•	•	
	Nameplate (Above Code 10370)	L10184	1	•	X	•	•	•	•	•	•	
	Nameplate (CSA) (Between Code10214 & 10370)	L9388-1	1	•	X	•	•	•	•	•	•	
	Nameplate (CSA) (Between Code 10370 & 10530)	L10184-1	1	•	X	•	•	•	•	•	•	
	Nameplate (CSA) (Between Code 10530 & 10541)	L10183-1	1	•	•	X	X	X	•	•	•	
	Nameplate (CSA) (Above Code 10541)	L10183-2	1	•	•	•	•	•	X	X	X	
10A	Self-Tapping Screw	S8025-91	6	X	X	X	X	X	X	X	X	
11	Choke Control Cable (Inc. Knob) (Onan below code 10900)	S7525-18	1	X	X	X	•	•	•	•	•	
	Choke Control Cable (Inc. Knob) (Kohler)	S7525-19	1	X	X	X	X	•	X	•	X	
	Choke Control Cable (Inc. Knob) (Honda)	S7525-20	1	•	•	•	•	X	•	X	•	
	Choke Control Cable (Inc. Knob )(Onan above code 10900)	S7525-22	1	•	•	•	•	•	X	•	•	#
12	Duplex Receptacle	S20184	2	X	X	X	X	X	X	X	X	
	Duplex Receptacle (CSA)	S20143-1	2	X	X	X	X	X	•	X	X	
12A	Sem Screw	T10082-27	4	X	X	X	X	X	X	X	X	
12B	#8-32 Hex Nut	CF000042	4	X	X	X	X	X	X	X	X	
16	Circuit Breaker (35A) (CSA) (Not Shown)	T12287-29	2	X	X	X	X	X	X	•	•	
	Circuit Breaker (40A)(Not Shown)	T12287-36	2	•	•	•	•	•	X	X	X	
16A	#10-32 x .375 Round Head Screw	CF000113	4	X	X	X	X	X	X	X	X	
16B	Plain Washer	S9262-3	4	X	X	X	X	X	X	X	X	
16C	Lock Washer	E106A-1	1	X	X	X	X	X	X	X	X	
17	Circuit Breaker (CSA) (Not Shown)	T12287-22	4	X	X	X	X	X	•	•	•	
18	Start Button (Not Shown)	S13146-1	1	X	X	X	X	X	X	X	X	
19	Circuit Breaker, 20A (CSA) (Not Shown)	T12287-35	2	•	•	•	•	•	X	X	X	
19A	Bushing (Not Shown)	S23828	2	•	•	•	•	•	X	X	X	

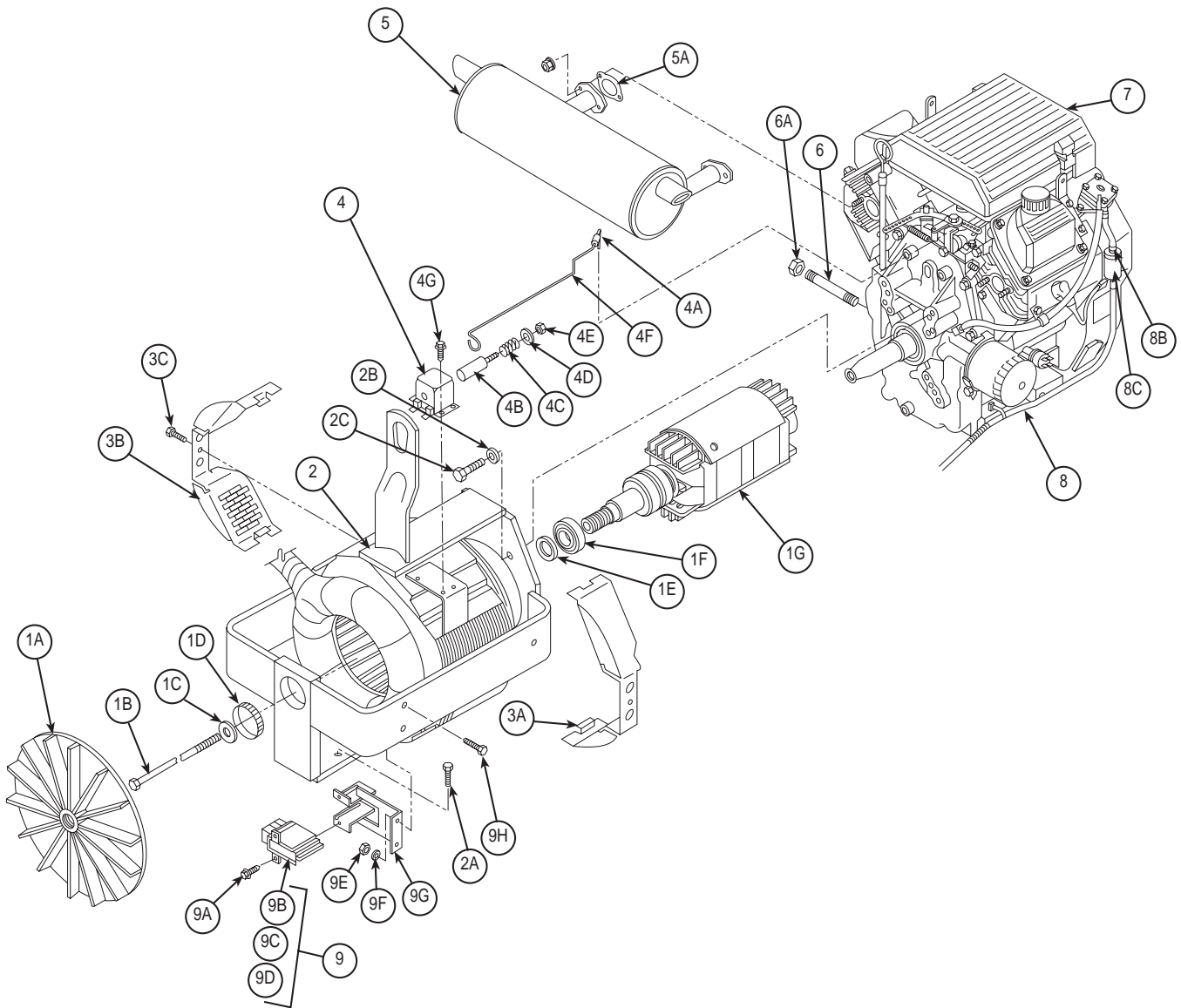
NSS - Not sold separately

Ø This part is obsolete and no longer available.



Index of Sub Assemblies  
 Sub Assembly Illustration  
 Index of Sub Assemblies  
 Sub Assembly Illustration  
 Index of Sub Assemblies  
 Sub Assembly Illustration  
 Index of Sub Assemblies  
 Sub Assembly Illustration

# ENGINE/ROTOR/STATOR ASSEMBLY





# Indicates a change this printing.

Use only the parts marked "x" in the column under the heading number called for in the model index page.

ITEM	DESCRIPTION	PART NO.	QTY.	1	2	3	4	5	6	7	8	9
1A	Blower	L9033	1	X	X	X	X	X	X	X	X	X
1B	Thru Bolt	T14843-3	1	X	X	X	X	X	X	X	X	X
1C	Plain Washer	S9262-149	1	X	X	X	X	X	X	X	X	X
1D	Tolerance Ring	S18044-9	1	X	X	X	X	X	X	X	X	X
1E	Centering Washer	S20110-3	1	X	X	X	X	X	X	X	X	X
1F	Bearing	M9300-85	1	X	X	X	X	X	X	X	X	X
1G	Rotor and Shaft Assembly	L9031	1	X	X	X	X	X	X	X	X	X
2	Stator Frame Assembly	G2617-1	1	X	X	X	•	•	•	•	•	•
2	Stator Frame Assembly	G2618-1	1	•	•	•	X	X	X	X	X	X
2A	Thread Forming Screw	S9225-28	2	X	X	X	X	X	X	X	X	X
2B	Lock Washer	E106A-4	4	X	X	X	X	X	X	X	X	X
2C	Hex Head Cap Screw	T8833-10	4	X	X	X	X	X	X	X	X	X
3A	Stator Cover (Right)	L9048	1	X	X	X	X	X	X	X	X	X
3B	Stator Cover (Left)	L9147	1	X	X	X	X	X	X	X	X	X
3C	Thread Forming Screw	S9225-68	2	X	X	X	X	X	X	X	X	X
4	Idler Assembly	S20752	1	X	X	X	X	X	X	•	X	
4A	Retaining Clip	S21015	1	X	X	X	X	X	X	•	X	
4B	Plunger	S21020	1	X	X	X	X	X	X	•	X	
4C	Spring	T6778	1	X	X	X	X	X	X	•	X	
4D	Plain Washer	S9262-98	1	X	X	X	X	X	X	•	X	
4E	1/4-20 HJLN	T9187-1	1	X	X	X	X	X	X	•	X	
4F	Pull Wire (Onan)	S20687	1	X	X	X	X	•	•	•	X	
	Pull Wire (Briggs & Stratton)	S20847	1	X	•	•	•	•	•	•	•	
	Pull Wire (Kohler)	S20848	1	X	X	X	X	•	X	•	X	
	Pull Wire (Honda)	S20687-1	1	•	•	•	•	X	•	•	•	
	Pull Wire (Onan)	S25158	1	•	•	•	•	•	X	•	•	
4G	Self Tapping Screw	S8025-91	3	X	X	X	X	X	X	•	X	
5	Muffler Assembly (Onan)	G2619	1	X	X	X	X	X	•	•	X	
	Muffler Assembly (Kohler)	G2642	1	X	X	X	X	X	X	•	X	
	Muffler Assembly (Briggs & Stratton)	G2644	1	X	X	X	X	X	•	•	X	
	Muffler Assembly (Honda)	G3357	1	•	•	•	•	X	•	•	•	
	Muffler Assembly (Onan)	G3574-8	1	•	•	•	•	•	X	•	•	
	Muffler Assembly (Honda)	G3574-7	1	•	•	•	•	•	•	X	•	
5A	Exhaust Gasket (Onan) (Supplied w/Engine)	T15130	1	X	X	X	X	X	X	•	X	
	Exhaust Gasket (Kohler) (Supplied w/Engine)	M16999-1	2	X	X	•	•	X	•	•	•	
	Exhaust Gasket (Kohler) (Supplied w/Engine)	M19046-1	2	•	•	X	X	X	X	•	X	
	Exhaust Gasket (Honda) (Supplied w/Engine)	M18988-2	2	•	•	•	•	•	•	•	X	X
6	Pipe Nipple	T9959-18	1	X	X	X	X	X	•	X	X	
6	Pipe Nipple	T9959-16 ø	1	X	X	X	X	X	•	X	X	
6	Oil Drain Valve	S24662	1	•	•	•	•	•	X	X	•	
6A	Pipe Cap – 3/8	T14426-3	1	X	X	X	X	X	•	X	X	
6A	Adapter	S25468	1	•	•	•	•	•	X	X	•	
7	Engine	<b>NSS</b>	1	X	X	X	X	X	X	X	X	
7A	Idle Lever (Not Shown)	M18975	1	•	•	•	•	X	•	•	X	
8	Flex Tube	T10642-261	1	X	•	X	•	X	•	•	•	
	Flex Tube	T10642-189	1	X	•	X	•	•	X	•	•	
	Flex Tube	T10642-259	1	•	•	•	•	•	•	X	•	
8B	Hose Clamp	T13777-7	3	X	•	X	•	X	X	X	•	
8C	Fuel Filter (Supplied w/Engine)	<b>NSS</b>	1	X	•	X	•	X	X	X	•	

#  
#

Index of Sub Assemblies  
 Sub Assembly Illustration  
 Index of Sub Assemblies  
 Sub Assembly Illustration  
 Index of Sub Assemblies  
 Sub Assembly Illustration  
 Index of Sub Assemblies  
 Sub Assembly Illustration

# Indicates a change this printing.

Use only the parts marked "x" in the column under the heading number called for in the model index page.

ITEM	DESCRIPTION	PART NO.	QTY.	1	2	3	4	5	6	7	8	9
9	Brush & Brush Holder Assembly, Includes: (9B-9D)	M16158	1	X	X	X	X	X	X	X	X	X
9A	Self Tapping Screw	S8025-65	2	X	X	X	X	X	X	X	X	X
9B	Brush Holder Cartridge	G2114	1	X	X	X	X	X	X	X	X	X
9C	Brush Assembly	S19480	2	X	X	X	X	X	X	X	X	X
9D	Brush Assembly Retainer	M16157	1	X	X	X	X	X	X	X	X	X
9E	1/4-20 HN	CF000017	2	X	X	X	X	X	X	X	X	X
9F	Lock Washer	E106A-2	2	X	X	X	X	X	X	X	X	X
9G	Brush Holder Welded Assembly	M18925	1	X	X	X	X	X	X	X	X	X
9H	1/4-20 x 1.00 HHCS	CF000015	2	X	X	X	X	X	X	X	X	X
10	LP Converter Kit (LPG) (Supplied w/Engine) (Not Shown)	M17335-1	1	•	X	•	X	•	•	•	•	X
10A	LP Converter Assembly (Supplied w/Engine)	M17780	1	•	X	•	X	•	•	•	•	X
11	Regulator Mounting Bracket (Not Shown)	S21360 ø	1	•	X	•	X	•	•	•	•	X
	Spacer	S21359	1	•	X	•	X	•	•	•	•	X
	5/16-18x2.75 HHCS	CF000073	2	•	X	•	X	•	•	•	•	X
	1/4-20x1.00 HHCS	CF000015	2	•	X	•	X	•	•	•	•	X
	Lock Washer	E106A-2	2	•	X	•	X	•	•	•	•	X
	Plain Washer	S9262-121	2	•	X	•	X	•	•	•	•	X
12A	Governor Bracket (Not Shown)	S25157	1	•	•	•	•	•	X	•	•	X
12B	Self Tapping Screw (Not Shown)	S8025-12	1	•	•	•	•	•	X	•	•	X
13	Pressure Switch (Oil) - (Not Shown)	S14446-3	1	•	•	•	•	•	•	•	X	•

Index of Sub Assemblies  
 Sub Assembly Illustration  
 Index of Sub Assemblies  
 Sub Assembly Illustration  
 Index of Sub Assemblies  
 Sub Assembly Illustration  
 Index of Sub Assemblies  
 Sub Assembly Illustration

# NOTES

---

Index of Sub Assemblies

Index of Sub Assemblies

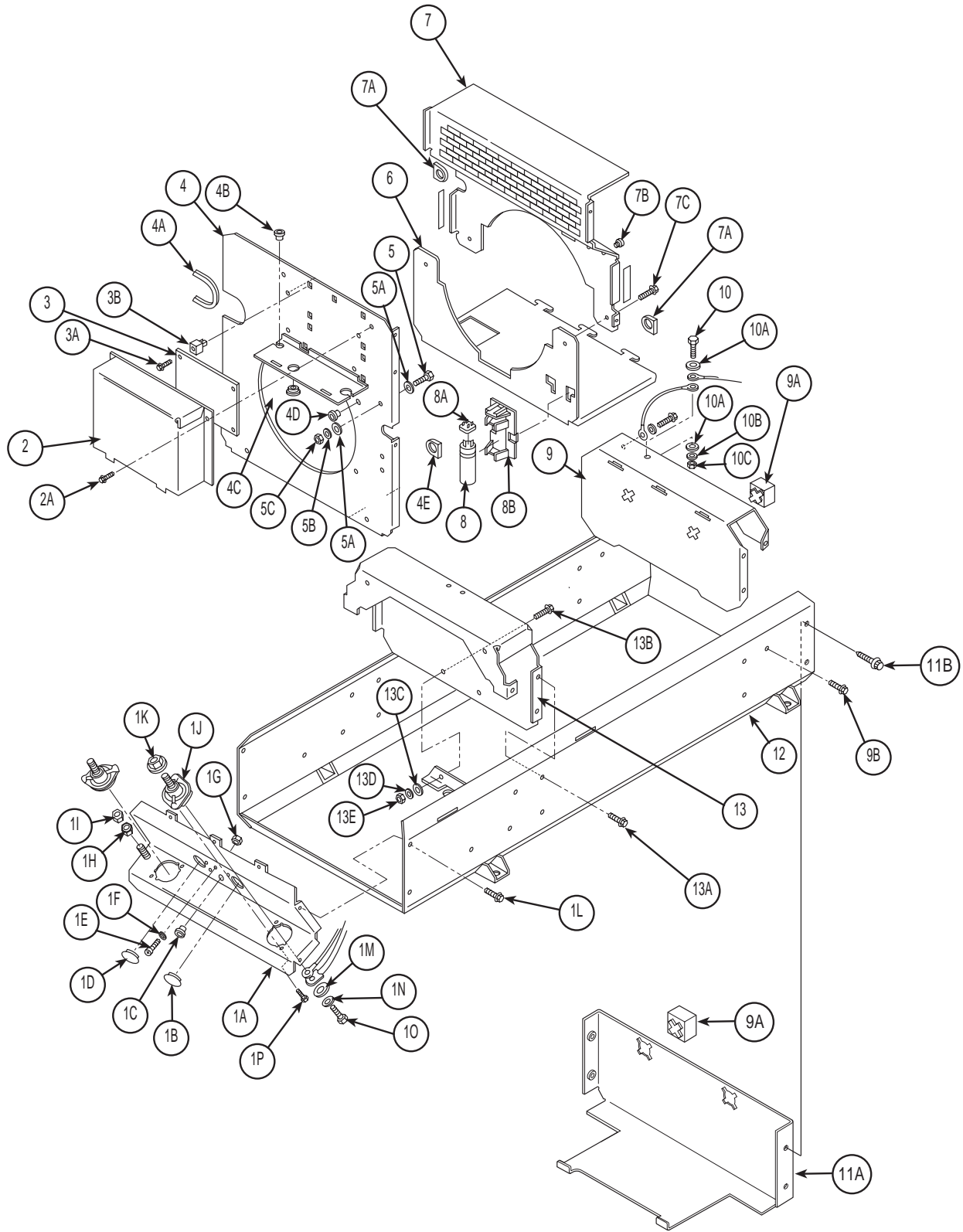
Index of Sub Assemblies

Index of Sub Assemblies

RANGER 8 & RANGER 8 LPG



# BASE ASSEMBLY (1 OF 2)



Index of Sub Assemblies  
Index of Sub Assemblies  
Index of Sub Assemblies  
Index of Sub Assemblies

Part Numbers  
Part Numbers  
Part Numbers  
Part Numbers

# Indicates a change this printing.

Use only the parts marked "x" in the column under the heading number called for in the model index page.

\* Recommended Spare Part

ITEM	DESCRIPTION	PART NO.	QTY.	1	2	3	4	5	6	7	8	9
1	Lower Case Front Assembly, Includes: (Includes 1A-1L)	M17231-1	1	X	X	X	X	X	X	X	X	X
1A	Lower Case Front Welded Assembly	M17009	1	X	X	X	X	X	X	X	X	X
1B	Plug Button	T10397-10	1	X	X	X	X	X	X	X	X	X
1C	Plug Button	T10397-20	1	X	X	X	X	X	X	X	X	X
1D	Plug Button	T10397-3	1	X	X	X	X	X	X	X	X	X
1E	Thread Forming Screw	S9225-36	1	X	X	X	X	X	X	X	X	X
1F	Lock Washer	E106A-1	1	X	X	X	X	X	X	X	X	X
1G	#10-24 Hex Nut	CF000010	1	X	X	X	X	X	X	X	X	X
1H	1/4-20 Hex Nut	CF000017	1	X	X	X	X	X	X	X	X	X
1I	Lock Nut	T9187-1	1	X	X	X	X	X	X	X	X	X
1J	Output Terminal Assembly	T14166-9	2	X	X	X	X	X	X	X	X	X
1K	1/2-13 Hex Head Flange Nut (Included with item 1J)	T3960	2	X	X	X	X	X	X	X	X	X
1L	Thread Forming Screw	S9225-68	4	X	X	X	X	X	X	X	X	X
1M	Plain Washer	S9262-1	2	X	X	X	X	X	X	X	X	X
1N	Lock Washer	E106A-15	2	X	X	X	X	X	X	X	X	X
1O	1/2-13 x .875 Hex Head Bolt	CF000344	2	X	X	X	X	X	X	X	X	X
1P	Self-Tapping Screw	S8025-65	4	X	X	X	X	X	X	X	X	X
2	P.C. Board Cover	L9293	1	X	X	•	•	•	•	•	•	•
2	P.C. Board Cover	L10804	1	•	•	X	X	X	X	X	X	X
2A	Self-Tapping Screw	S8025-91	4	X	X	X	X	X	X	X	X	X
3	Control P.C. Board Assembly	L8484-[ ]	1	X	X	X	X	X	•	•	•	•
3	Control P.C. Board Assembly	L11883-[ ]	1	•	•	•	•	X	X	X	X	X
3A	Self-Tapping Screw	S8025-97	5	X	X	X	X	X	X	X	X	X
3B	Plastic Expansion Nut	S14020-3	5	X	X	X	X	X	X	X	X	X
4	Baffle Assembly	L9034	1	X	X	•	•	•	•	•	•	•
4	Baffle	G3438	1	•	•	X	X	X	X	X	X	X
4A	Grommet Strip	T12823-23	1	X	X	•	•	•	•	•	•	•
4B	Bushing	T12380-6	1	X	X	X	X	X	X	X	X	X
4C	Bushing	T12380-4	1	X	X	X	X	X	X	X	X	X
4D	Bushing	T12380-3	1	X	X	•	•	•	•	•	•	•
4D	Universal Bushing	T14614-2	1	•	•	X	X	•	•	X	X	
4D	Universal Bushing	T14614-1	1	•	•	•	•	X	X			
4E	Grommet	S18543-3	1	X	X	•	•	•	•	•	•	•
4E	Input Cable Grommet	S18543-1	1	•	•	X	X	X	X	X	X	X
5	Thread Forming Screw	S9225-36	1	X	X	X	X	X	X	X	X	X
5A	Plain Washer	S9262-27	2	X	X	X	X	X	X	X	X	X
5B	Lock Washer	E106A-1	1	X	X	X	X	X	X	X	X	X
5C	#10-24 Hex Nut	CF000010	1	X	X	X	X	X	X	X	X	X
6	Lower Case Back	G2546	1	X	X	X	•	X	X	•	•	
6	Lower Case Back	G2748	1	•	•	•	X	•	•	X	X	
7	Upper Case Back	G2545	1	X	X	X	X	X	X	X	X	X
7A	Grommet	S18543-3	2	X	X	•	•	•	•	•	•	•
7A	Input Cable Grommet	S18543-2	2	•	•	X	X	X	X	X	X	X
7B	Bushing	T12380-6	1	X	X	X	X	X	X	X	X	X
7C	Self-Tapping Screw	S8025-91	2	X	X	X	X	X	X	X	X	X
7D	Flat Washer (Not Shown)	S9262-27	1	X	X	X	•	X	•	•	•	
7E	Hose Clamp (Not Shown)	S24305	1	X	X	X	•	X	•	•	•	

Index of Sub Assemblies  
 Sub Assembly Illustration  
 Index of Sub Assemblies  
 Sub Assembly Illustration  
 Index of Sub Assemblies  
 Sub Assembly Illustration  
 Index of Sub Assemblies  
 Sub Assembly Illustration

# Indicates a change this printing.

Use only the parts marked "x" in the column under the heading number called for in the model index page.

ITEM	DESCRIPTION	PART NO.	QTY.	1	2	3	4	5	6	7	8	9
8	Capacitor	S13490-114	1	X	X	X	X	X	X	X	X	X
8A	Diode Bridge	T13637-1	1	X	X	X	X	X	X	X	X	X
8B	Mounting Bracket	L9250	1	X	X	X	X	X	X	X	X	X
9	Engine Cross Support	L8536	1	X	.	.	.	.	.	.	.	.
9	Engine Cross Support (Codes 10377, 10374, 10373, 10339, 10338, 10214, 10136, 9973, 9972)	L8448	1	X	X	.	.	.	.	.	.	.
9	Engine Cross Support (Codes 10526, 10376, 10375, 10340, 10110)	L9049	1	X	X	.	.	.	.	.	.	.
9	Engine Cross Support	L10806	1	.	.	X	.	.	.	.	.	.
9	Engine Cross Support	L10805	1	.	.	X	X	.	.	X	X	.
9	Engine Cross Support	L10782	1	.	.	.	.	X	.	.	.	.
9	Engine Cross Support	L11793	1	.	.	.	.	.	X	.	.	.
9A	Support	M16528	4	X	X	X	X	X	X	X	X	X
9B	Tread Forming Screw	S9225-68	6	X	X	X	X	X	X	X	X	X
10	3/8-16 x 1.50 Hex Head Cap Screw	CF000066	2	X	X	.	.	.	.	.	.	.
10	3/8-16 x 1.75 Hex Head Cap Screw	CF000112	2	.	.	X	X	X	X	X	X	X
10A	Plain Washer	S9262-120	2	X	X	X	X	X	X	X	X	X
10B	Lock Washer	E106A-4	2	X	X	.	.	.	X	.	.	.
10B	Lock Washer	E106A-14	2	.	.	X	X	X	.	X	X	.
10C	3/8-16 Hex Nut	CF000067	2	X	X	X	X	X	X	X	X	X
11A	Rear Base Panel	L10783	1	.	.	X	X	X	X	X	X	X
11B	Thread Forming Screw	S9225-68	4	X	X	X	X	X	X	X	X	X
12	Base Assembly	L9027	1	X	X	.	.	.	.	.	.	.
12	Base Assembly	L10777	1	.	.	X	X	X	X	X	X	X
13	Stator Support Bracket	L8437	1	X	X	X	X	X	X	X	X	X
13A	Thread Forming Screw	S9225-68	6	X	X	X	X	X	X	X	X	X
13B	Carriage Bolt	T11827-23	2	X	X	X	X	X	X	X	X	X
13C	Plain Washer	S9262-98	2	X	X	X	X	X	X	X	X	X
13D	Lock Washer	E106A-2	2	X	X	X	X	X	X	X	X	X
13E	1/4-20 Hex Nut	CF000017	2	X	X	X	X	X	X	X	X	X
14	Starter Solenoid	M15835	1	.	.	.	.	.	.	X	.	.
14A	Terminal Cover (Supp. W/Engine)	M18988-6	1	.	.	.	.	.	.	X	.	.
14B	1/4-20 x .50 HHCS	CF000012	2	.	.	.	.	.	.	X	.	.
14C	Plain Washer	S9262-98	2	.	.	.	.	.	.	X	.	.
14D	Lock Washer	E106A-2	2	.	.	.	.	.	.	X	.	.
14E	1/4-20 HN	CF000017	2	.	.	.	.	.	.	X	.	.
14F	Bushing ("+" Battery Cable)	T12380-10	1	.	.	.	.	.	.	X	.	.

#

**Note:** When ordering new printed circuit boards indicate the dash number [ ] of the "Old" board that is to be replaced. This will aid Lincoln in supplying the correct and latest board along with any necessary jumpers or adapters. The dash number brackets [ ] have purposely been left blank so as to eliminate errors, confusion and updates.



Index of Sub Assemblies  
 Sub Assembly Illustration  
 Index of Sub Assemblies  
 Sub Assembly Illustration  
 Index of Sub Assemblies  
 Sub Assembly Illustration  
 Index of Sub Assemblies  
 Sub Assembly Illustration

# NOTES

---

Index of Sub Assemblies

Index of Sub Assemblies

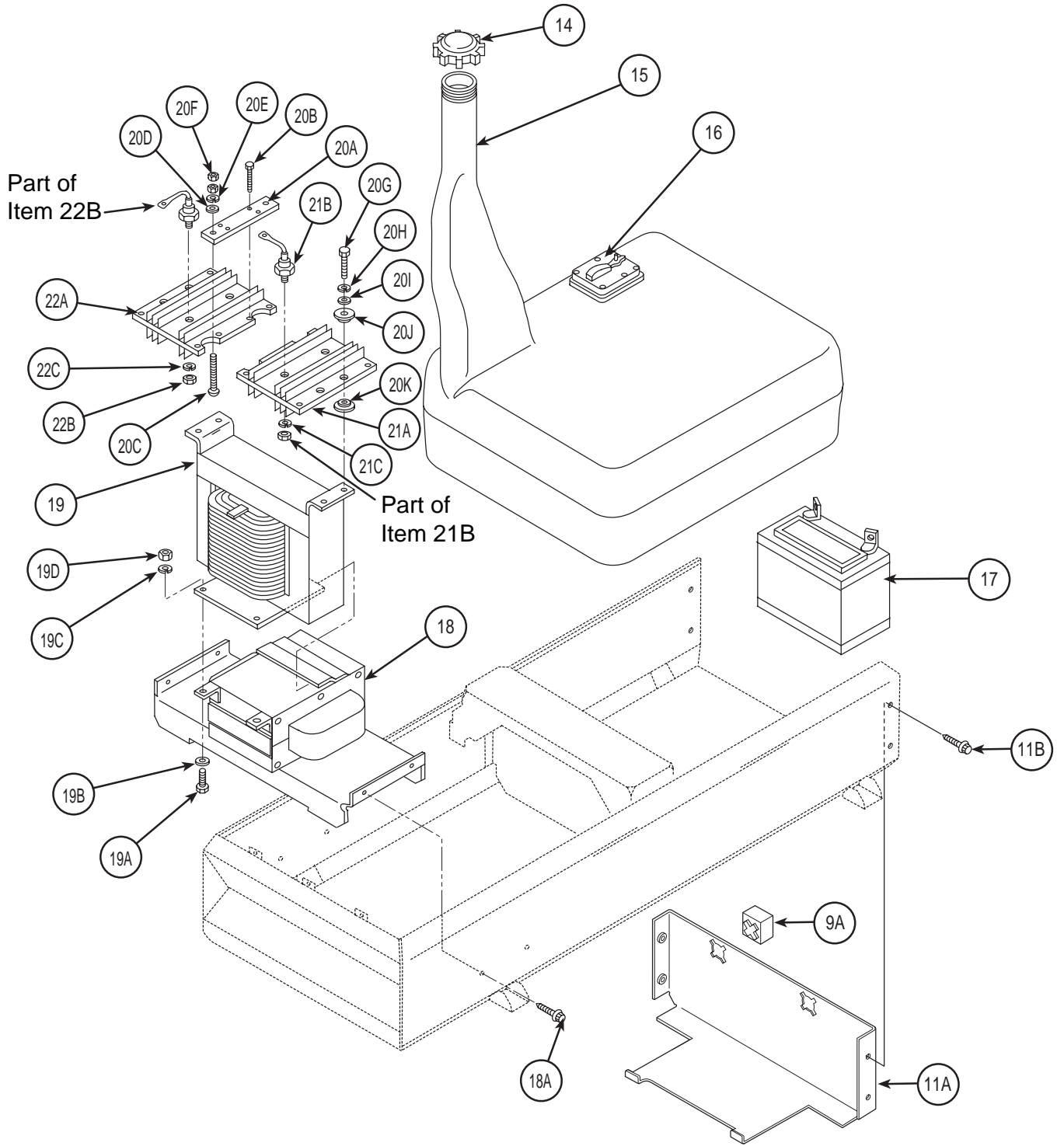
Index of Sub Assemblies

Index of Sub Assemblies

RANGER 8 & RANGER 8 LPG



# BASE ASSEMBLY (2 OF 2)



Index of Sub Assemblies

Part Numbers



# Indicates a change this printing.

Use only the parts marked "x" in the column under the heading number called for in the model index page.

ITEM	DESCRIPTION	PART NO.	QTY.	1	2	3	4	5	6	7	8	9
14	Fuel Cap	S19568	1	X	•	X	•	X	X	X		
15	Fuel Tank and Gauge Assembly (Below Code 10300)	G2635	1	X	•	•	•	•	•	•		
15	Fuel Tank and Gauge Assembly (Above Code 10300)	G2635-1	1	X	•	X	•	X	X	X		
16	Fuel Gage Assembly Kit ( Code 10526 & Below)	S21488	1	X	X	•	•	•	•	•		
16	Fuel Gage Assembly Kit ( Code 10535 & Above)	S22934	1	•	•	X	X	X	X	X		
17	Battery – 12 Volt	M9399-6 $\emptyset$	1	X	X	•	•	•	•	•		
17	Battery – 12 Volt	M9399-13	1	•	•	X	X	X	X	X		
17A	Battery Terminal Cover (Not Shown)	S20191	1	X	X	X	X	X	X	•		
17A	Battery terminal Cover (Not Shown)	S20191-1	1	•	•	•	•	X	•	X		
18	Reactor Assembly	L9095	1	X	X	X	X	X	X	X		
18A	Thread Forming Screw	S9225-68	4	X	X	X	X	X	X	X		
19	Choke Coil and Lamination Assembly	L9036-1	1	X	X	X	X	X	X	X		
19A	3/8-16 x 1.50 Hex Head Cap Screw	CF000066	2	X	X	•	•	•	X	•		
19A	3/8-16 x Hex Head Cap Screw	CF000019	2	•	•	X	X	X	•	X		
19B	Plain Washer	S9262-120	2	X	X	X	X	X	X	X		
19C	Lock Washer	E106A-16	2	X	X	X	X	X	X	X		
19D	3/8-16 Hex Nut	CF000067	2	X	X	X	X	X	X	X		
	Rectifier Assembly (Includes Items 20A-20F, 21 and 22)											
20A	Rectifier Brace	T14497-4	1	X	X	X	X	X	•	•		
20B	Self Tapping Screw	S9225-17	4	X	X	X	X	X	•	•		
20C	Carriage Bolt	T11827-40	2	X	X	X	X	X	•	•		
20D	Plain Washer	S9262-23	2	X	X	X	X	X	•	•		
20E	Lock Washer	T9860-6	2	X	X	X	X	X	•	•		
20F	Hex Nut (1/4-20)	CF000017	2	X	X	X	X	X	•	•		
20G	Self Tapping Screw (not included with item 20)	S8025-17	4	X	X	X	X	X	•	•		
20H	Lock Washer (not included with item 20)	T9860-6	4	X	X	X	X	X	•	•		
20I	Plain Washer (not included with item 20)	S9262-98	4	X	X	X	X	X	•	•		
20J	Insulator (not included with item 1)	T11267-B	4	X	X	X	X	X	•	•		
20K	Insulator (not included with item 20)	T14605	4	X	X	X	X	X	•	•		
	Rectifier Subassembly (Includes items 21A-21C)											
21A	Heat Sink	L9051-1A	1	X	X	X	X	X	•	•		
21A	Heat Sink	M17018-1	1	X	X	X	X	X	•	•		
21B	Diode	M9661-32R	2	X	X	X	X	X	•	•		
21C	Spring Washer	T12735-3	2	X	X	X	X	X	•	•		
	Rectifier Subassembly (Includes items 22A-22C)											
22A	Heat Sink	L9051-1B	1	X	X	X	X	X	•	•		
22A	Heat Sink	M17018-1	1	X	X	X	X	X	•	•		
22B	Diode	M9661-32	2	X	X	X	X	X	•	•		
22C	Spring Washer	T12735-3	2	X	X	X	X	X	•	•		
23A	Bridge Rectifier (Not Shown)	L11411-1	1	•	•	•	•	•	X	X		
23B	Rectifier Bracket (Not Shown)	M19864	1	•	•	•	•	•	X	X		
23C	Lock Washer (Not Shown)	E106A-2	4	•	•	•	•	•	X	X		
23D	Self Tapping Screw (Not Shown)	S9225-17	4	•	•	•	•	•	X	X		
23E	Plain Washer (Not Shown)	S9262-98	4	•	•	•	•	•	X	X		
23F	5/16-18 .75 Hex Head Cap Screw (Not Shown)	CF000040	3	•	•	•	•	•	X	X		
23G	1/4-20x.75 Hex Head Cap Screw (Not Shown)	CF000014	2	•	•	•	•	•	X	X		
23H	Plain Washer (Not Shown)	S9262-98	2	•	•	•	•	•	X	X		
23J	Lock Washer (Not Shown)	E106A-2	2	•	•	•	•	•	X	X		
23K	1/4-20 Hex Nut (Not Shown)	CF000017	2	•	•	•	•	•	X	X		
23L	Plain Washer (Not Shown)	S9262-30	7	•	•	•	•	•	X	X		
23M	Lock Washer (Not Shown)	E106A-14	3	•	•	•	•	•	X	X		
23N	5/16-18 Hex Nut (Not Shown)	CF000029	3	•	•	•	•	•	X	X		

#  
#

$\emptyset$  This part is obsolete and no longer available.



Index of Sub Assemblies  
 Sub Assembly Illustration  
 Index of Sub Assemblies  
 Sub Assembly Illustration  
 Index of Sub Assemblies  
 Sub Assembly Illustration  
 Index of Sub Assemblies  
 Sub Assembly Illustration

# NOTES

---

Index of Sub Assemblies

Index of Sub Assemblies

Index of Sub Assemblies

Index of Sub Assemblies

RANGER 8 & RANGER 8 LPG

